



# BEYER COMMUNITY PARK

COMMUNITY MEETING

FEBRUARY 13, 2017



SCHMIDT DESIGN GROUP, INC.



## INTRODUCTIONS

### **Recreation Council Chairman**

- **Bertha Gonzales**

### **Park and Recreation Contact**

- **Erek Estrada**

### **City of San Diego - Public Works**

- **Samir Mahmalji – Project Officer II**
- **Darren Genova – Project Manager**

### **Schmidt Design Group, Inc.**

- **Jeff Justus - Principal**
- **Jenn Montgomery - Project Manager**







## AGENDA

- **City General Development Plan Process**
- **Design Approach & Park Precedence Imagery**
- **Park Visioning Exercise**
- **Site Analysis**
- **Questions & Feedback**
- **Preliminary Park Amenities**
- **Next Steps**





# CITY GDP PROCESS

DARREN GENOVA

- **San Ysidro/Otay Mesa Recreation Council**
  - **Informational Meeting Feb 2017**
  - **Park Alternatives Spring 2017**
  - **Draft GDP Summer 2017**
- **CEQA Processing**
  - **Draft MND Document Early 2018**
  - **Final MND Document Summer 2018**
- **Park and Recreation Board Approval**
  - **Final GDP Summer 2018**







# Design Approach & Park Precedence Imagery

BEYER COMMUNITY PARK

Balancing artistic expression in design with environmental sensitivity





# SCHMIDT DESIGN GROUP, INC

- 60+ Public Park Renovations
- 12 Skate Parks
- 31 Streetscapes
- 45 New Regional and Community Parks
- 36 New Neighborhood Parks
- 10 Linear Trails and Corridors
- 22 Interpretive Education Projects
- 8 Coastal / Waterfront Projects
- 16 Public Planning Projects
- 80+ Public School Facilities
- 100 + Awards





# PARK PRECEDENT

## CAMINO RUIZ PARK





# PARK PRECEDENT

## CAMINO RUIZ PARK



PERIMETER TRAIL

Balancing artistic expression in design with environmental sensitivity





## PARK PRECEDENT CAMINO RUIZ PARK



INTERPRETIVE EDUCATION



Balancing artistic expression in design with environmental sensitivity





# PARK PRECEDENT

## CAMINO RUIZ PARK



ART AND CULTURAL RESOURCES INTEGRATION



Balancing artistic expression in design with environmental sensitivity





# PARK PRECEDENT

## BRIERCREST PARK

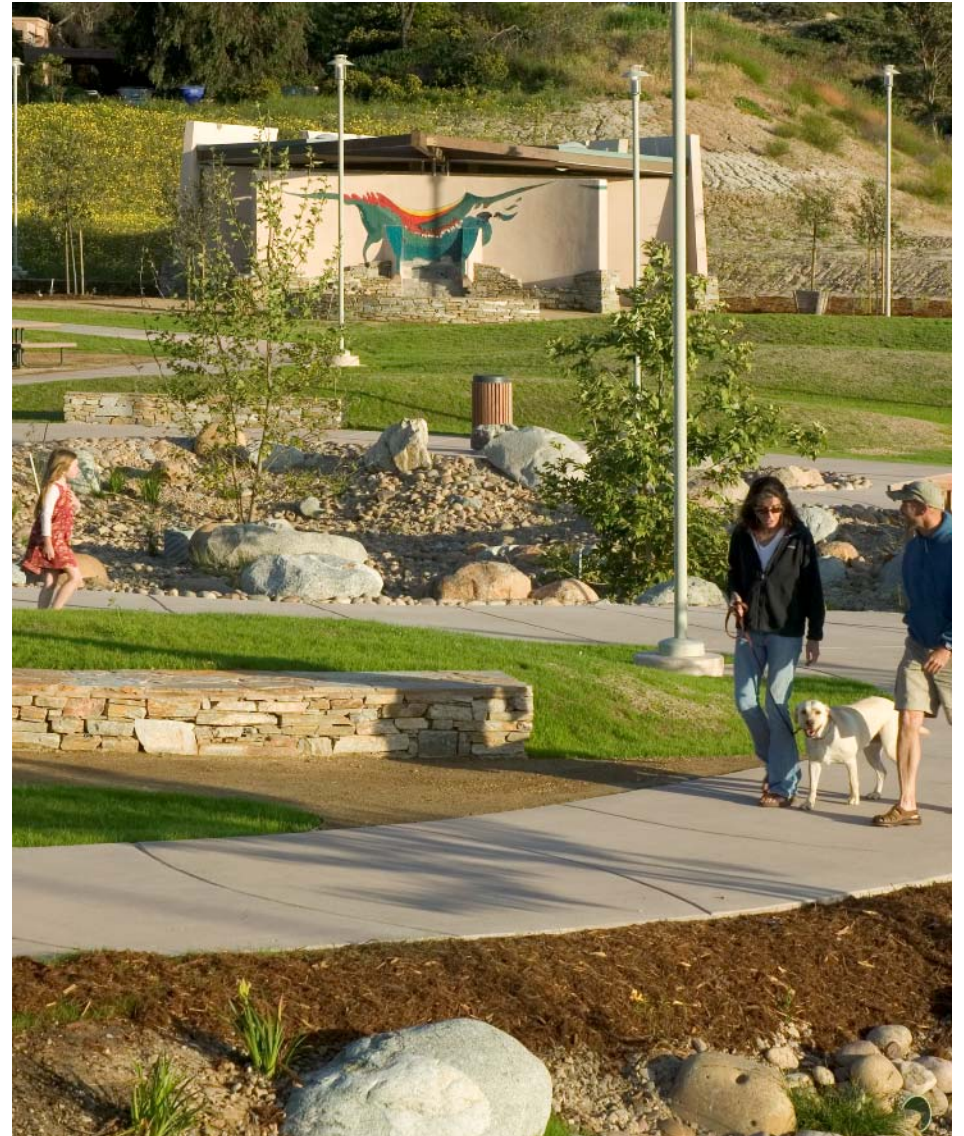




## PARK PRECEDENT BRIERCREST PARK



STORMWATER INTEGRATION



Balancing artistic expression in design with environmental sensitivity





## PARK PRECEDENT BRIERCREST PARK



EXPLORATION



Balancing artistic expression in design with environmental sensitivity





## PARK PRECEDENT BRIERCREST PARK



DISCOVERY



Balancing artistic expression in design with environmental sensitivity





# PARK PRECEDENT

## COTTONWOOD CREEK PARK

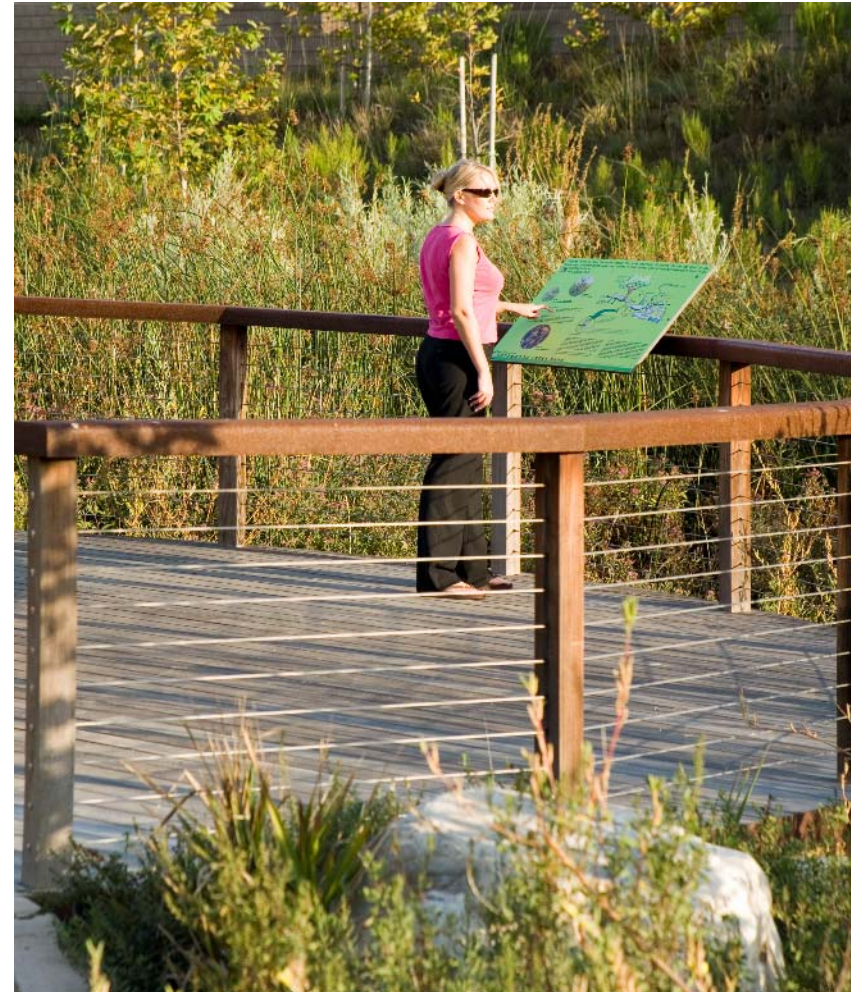




## PARK PRECEDENT COTTONWOOD CREEK PARK



INTERPRETIVE EDUCATION



Balancing artistic expression in design with environmental sensitivity





# PARK PRECEDENT

## OCEAN AIR COMMUNITY PARK





# PARK PRECEDENT

## OCEAN AIR COMMUNITY PARK



PERIMETER TRAIL

Balancing artistic expression in design with environmental sensitivity





# PARK PRECEDENT

## OCEAN AIR COMMUNITY PARK



CANYON SETTING

Balancing artistic expression in design with environmental sensitivity







ART AND CULTURAL INTEGRATION

## PARK PRECEDENT

### PINE AVENUE PARK



Balancing artistic expression in design with environmental sensitivity





# PARK PRECEDENT

## ELFIN FOREST



TRAILS AND OVERLOOKS



Balancing artistic expression in design with environmental sensitivity







# Park Visioning Exercise

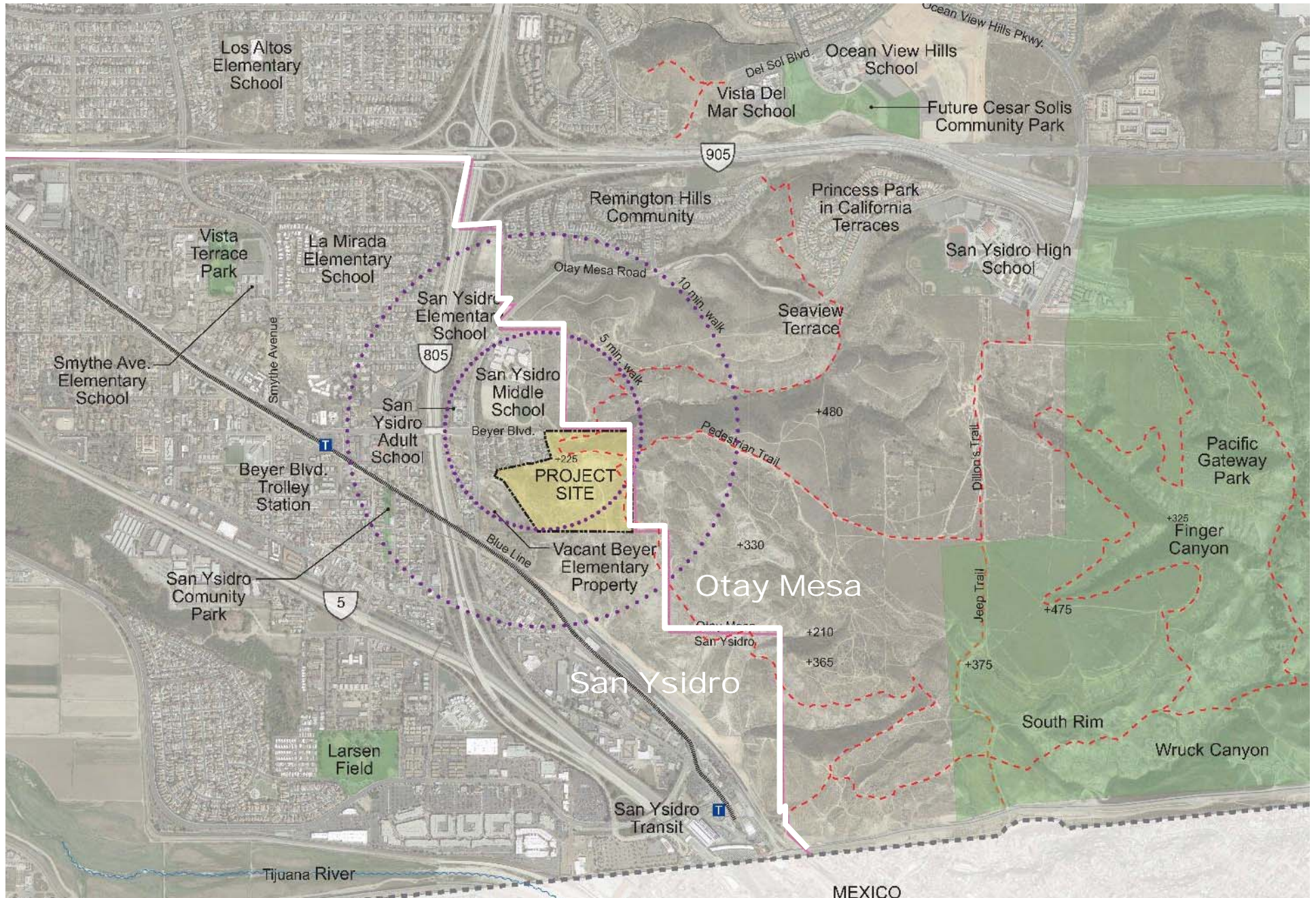
BEYER COMMUNITY PARK



SCHMIDT DESIGN GROUP, INC.



# PROJECT LOCATION





## PARK VISIONING EXERCISE



What makes your community special?



Describe your community in one word or short phrase on each sticky note.





# Site Analysis

BEYER COMMUNITY PARK

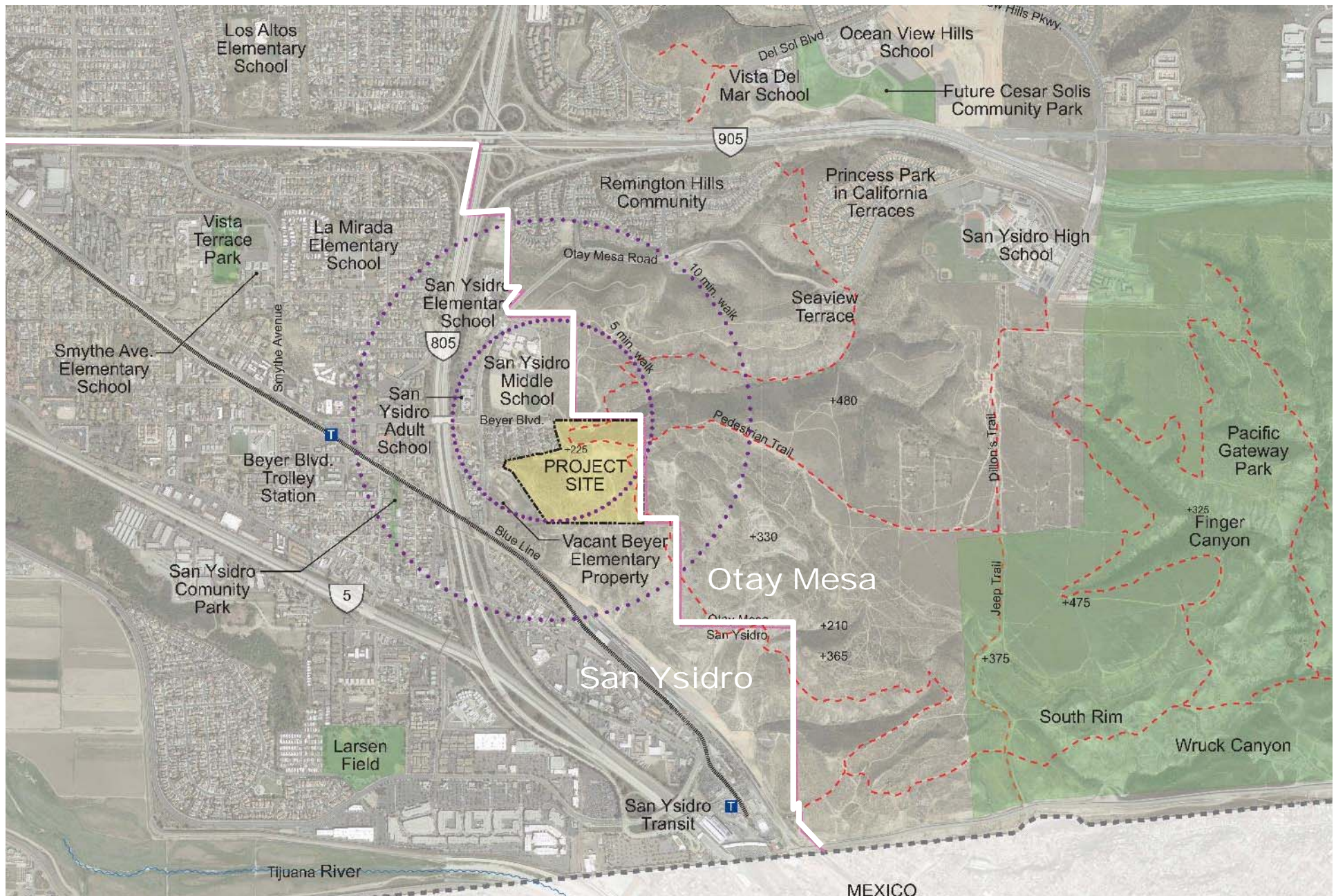
Balancing artistic expression in design with environmental sensitivity





# PROJECT LOCATION

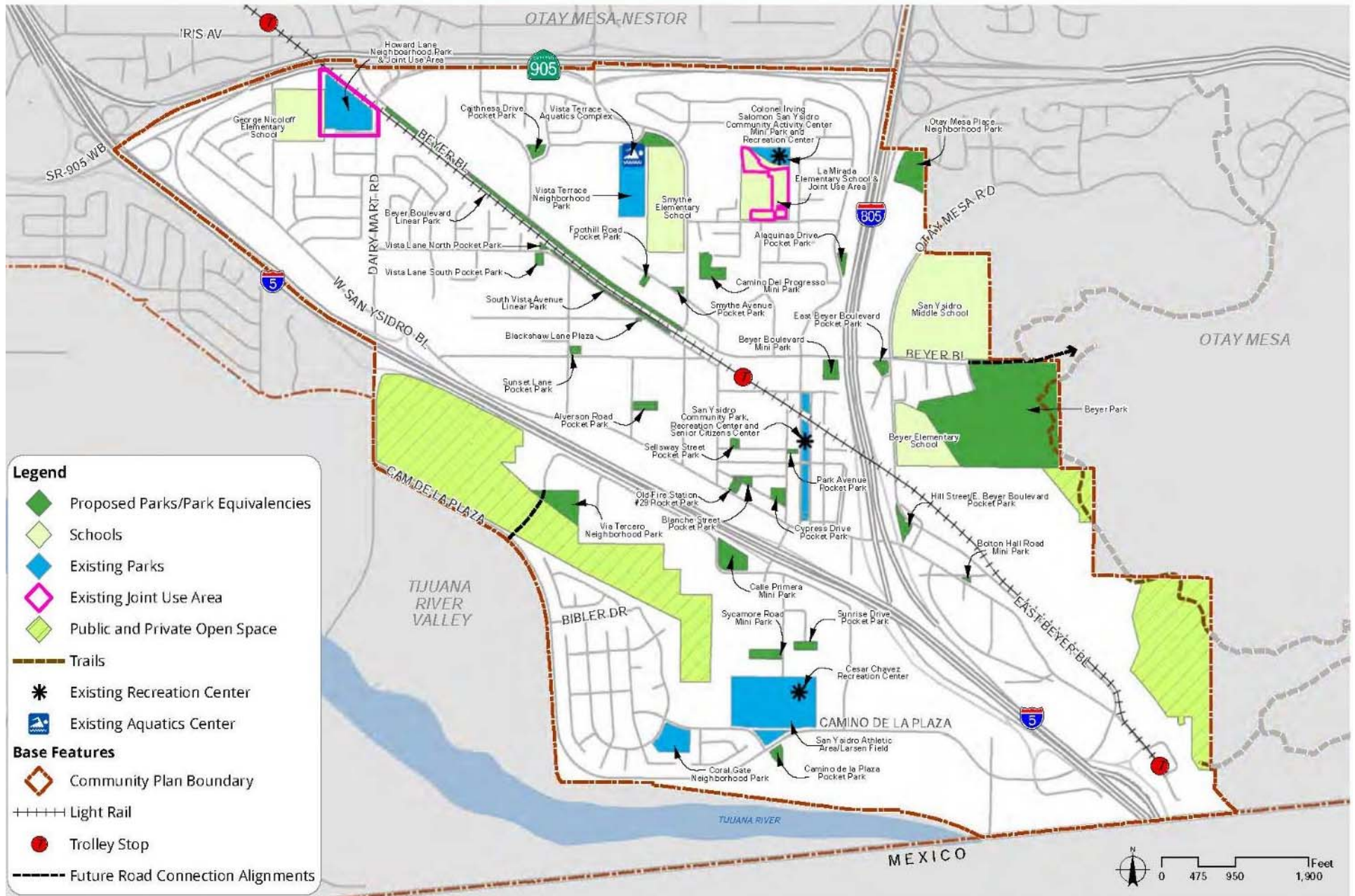
## SAN YSIDRO





# PROJECT LOCATION

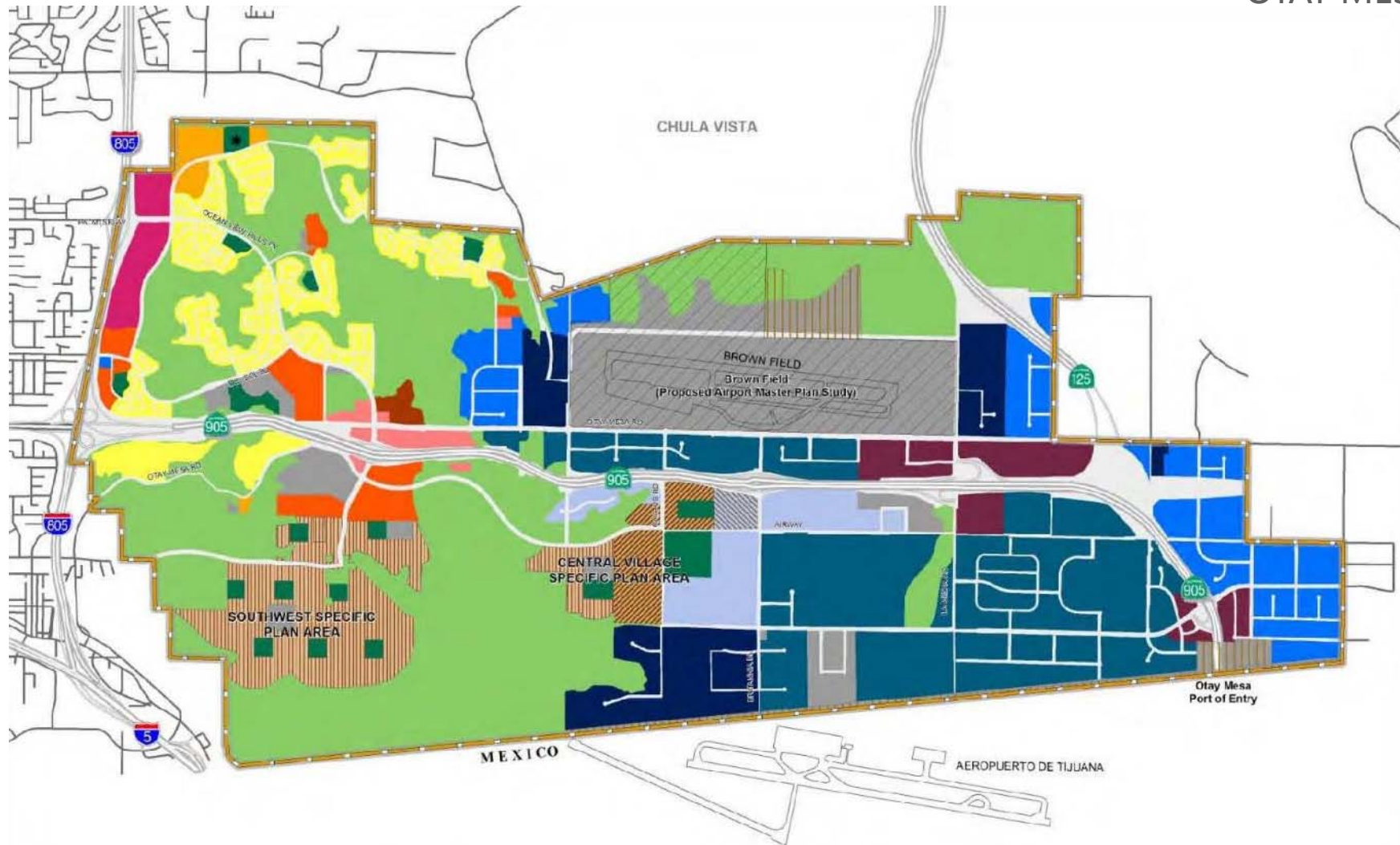
## SAN YSIDRO





# PROJECT LOCATION

## OTAY MESA



**OTAY MESA COMMUNITY PLAN UPDATE - Figure 2-1**



THE CITY OF SAN DIEGO

### Legend

#### Parks, Open Space, and Institutional

- Open Space
- Parks
- Institutional
- Village Centers**
  - Neighborhood Village 15-25 du/ac
  - Community Village 30-44 du/ac

#### Residential

- Residential - Low 5-9 du/ac
- Residential - Low Medium 10-14 du/ac
- Residential - Medium 15-29 du/ac
- Residential Medium High 30-44 du/ac

#### Commercial - Residential Prohibited

- Community Commercial
- Regional Commercial
- Heavy Commercial
- Neighborhood Commercial
- \* Potential Residential Site if Park Relocated

#### Industrial

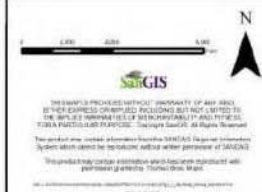
- Business Park - Office Permitted
- Light Industrial
- Heavy Industrial
- Business Park - Residential Permitted 15 - 44 du/ac
- Business and International Trade

#### Overlays

- U.S. Government Facility
- Brown Field Boundary
- Planning Areas

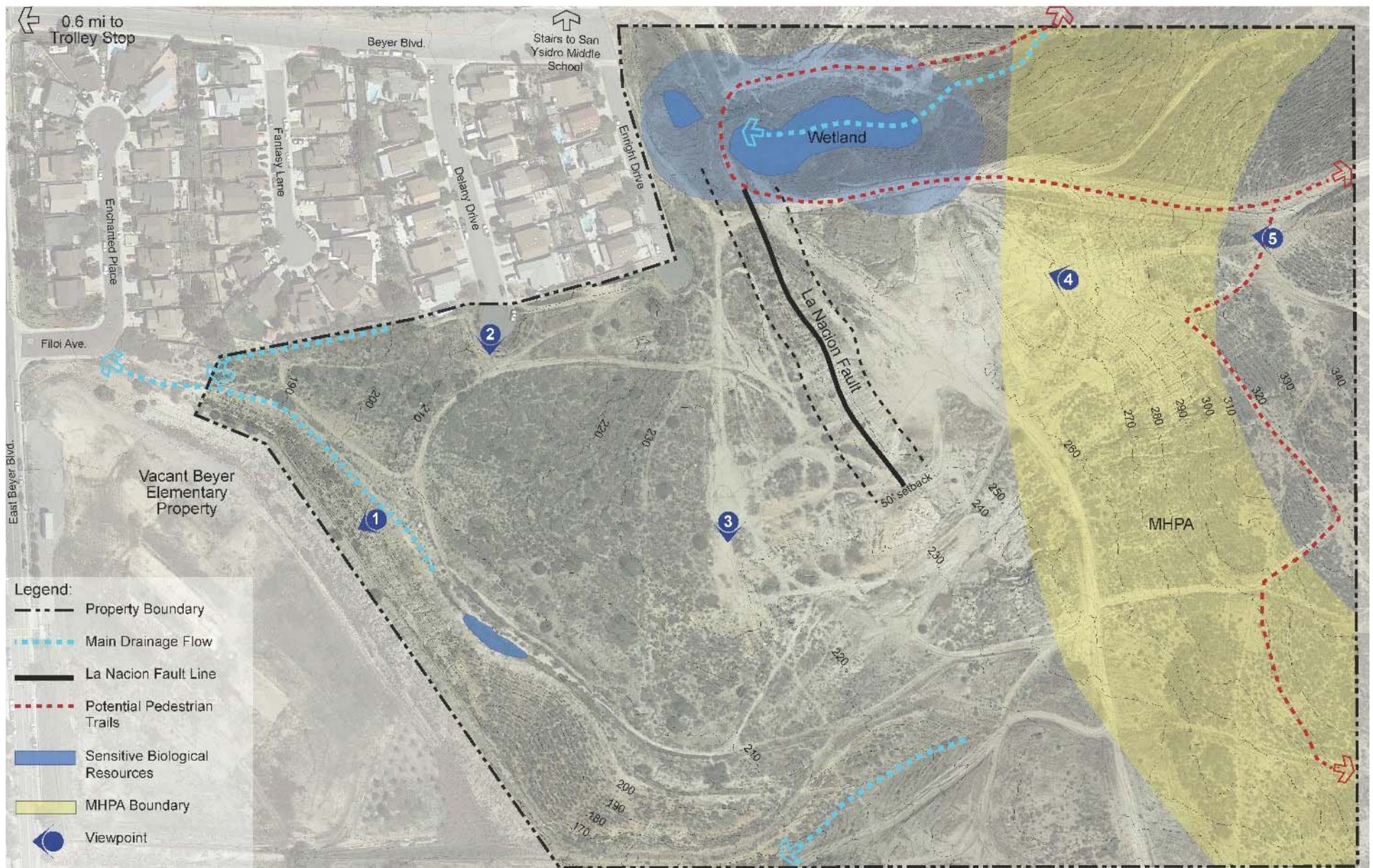
#### Other

- Right-Of-Way





# SITE ANALYSIS





# PROJECT SITE

## SITE PHOTOS





# PROJECT SITE

## SITE PHOTOS





# PROJECT SITE

## SITE PHOTOS





# PROJECT SITE

## SITE PHOTOS





# PROJECT SITE

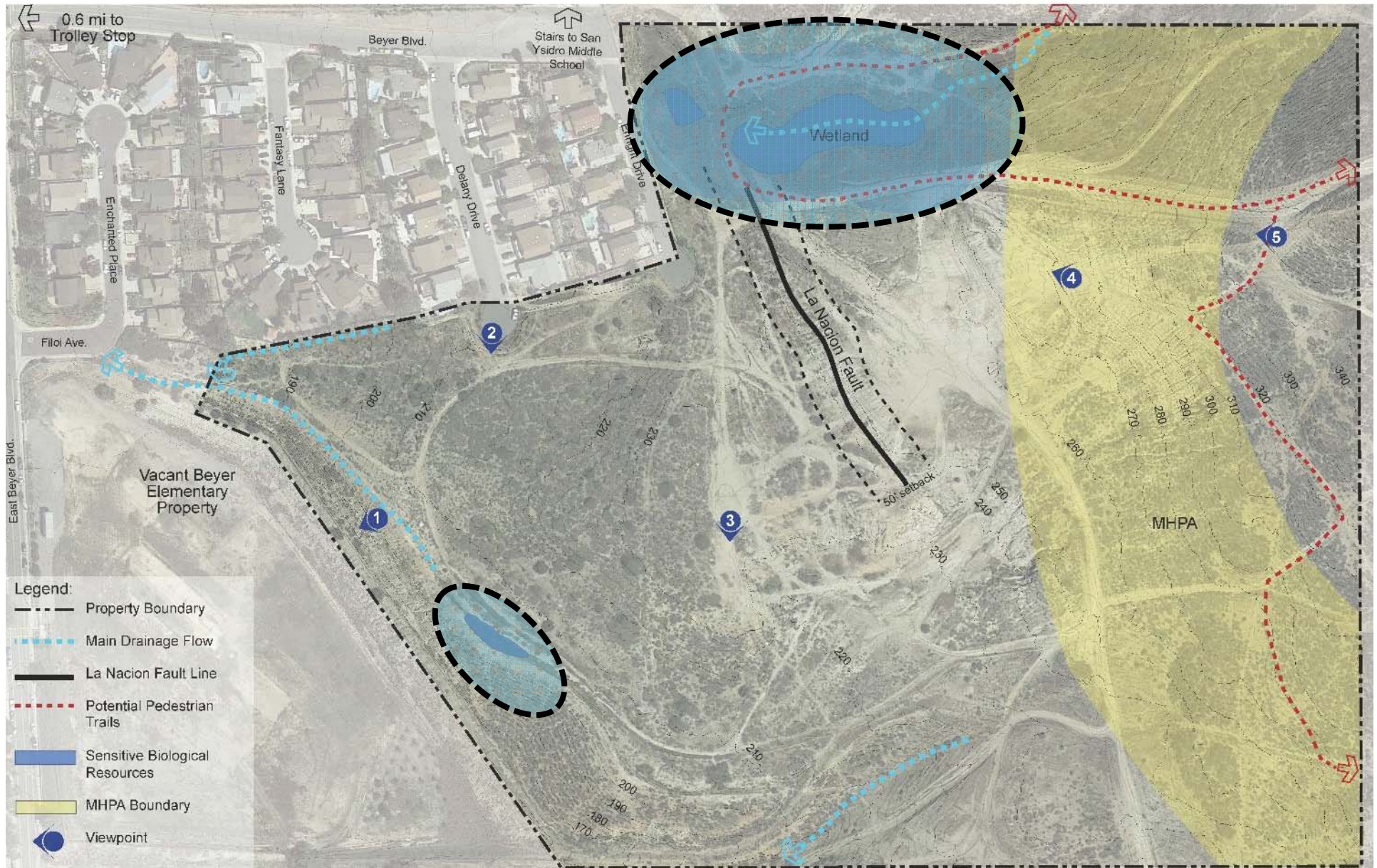
## SITE PHOTOS





# SITE ANALYSIS

## SENSITIVE BIOLOGICAL RESOURCES





# SITE ANALYSIS

## SENSITIVE BIOLOGICAL RESOURCES





## SITE ANALYSIS

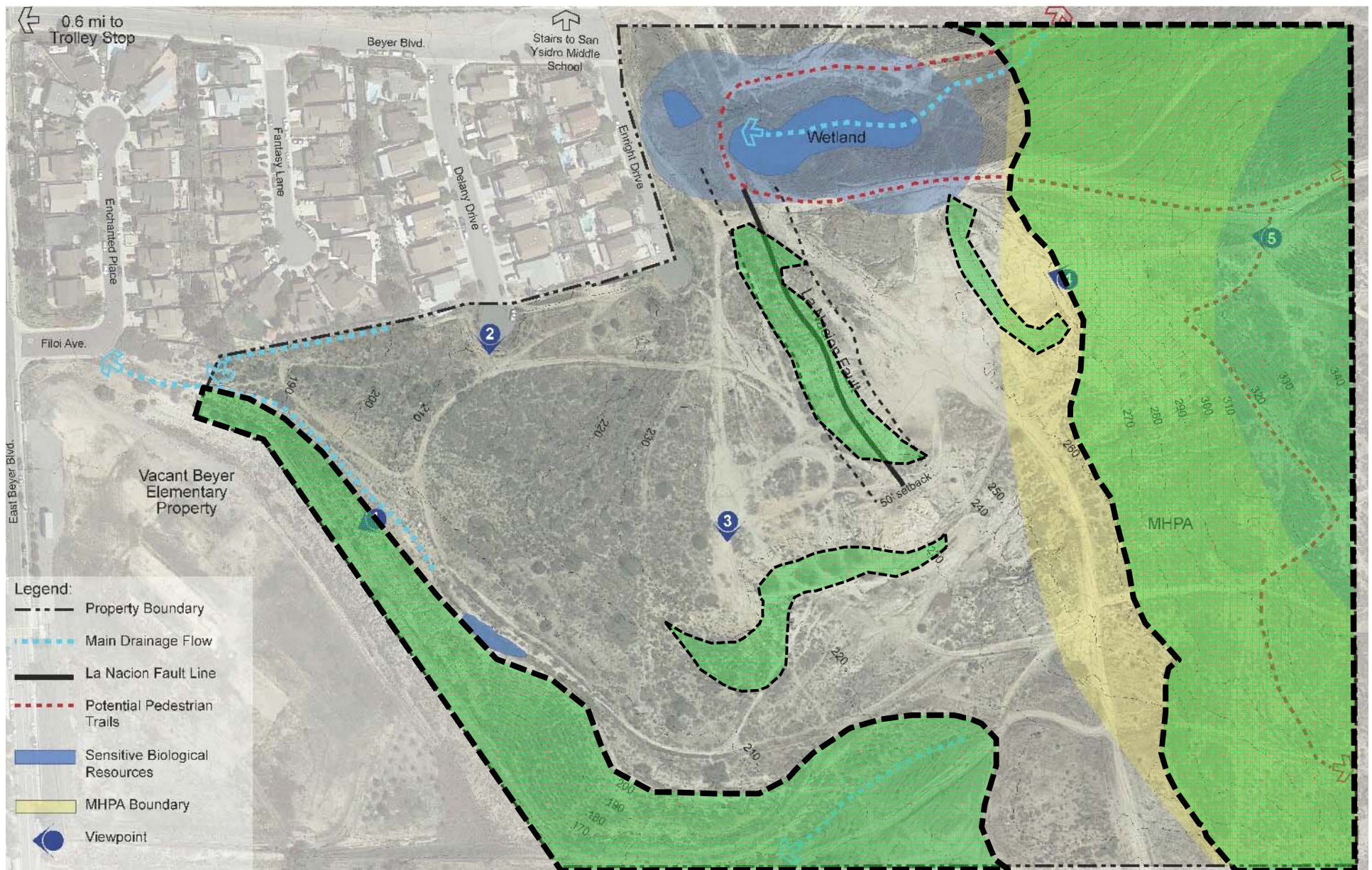
### SENSITIVE BIOLOGICAL RESOURCES





# SITE ANALYSIS

## STEEP SLOPES





# SITE ANALYSIS

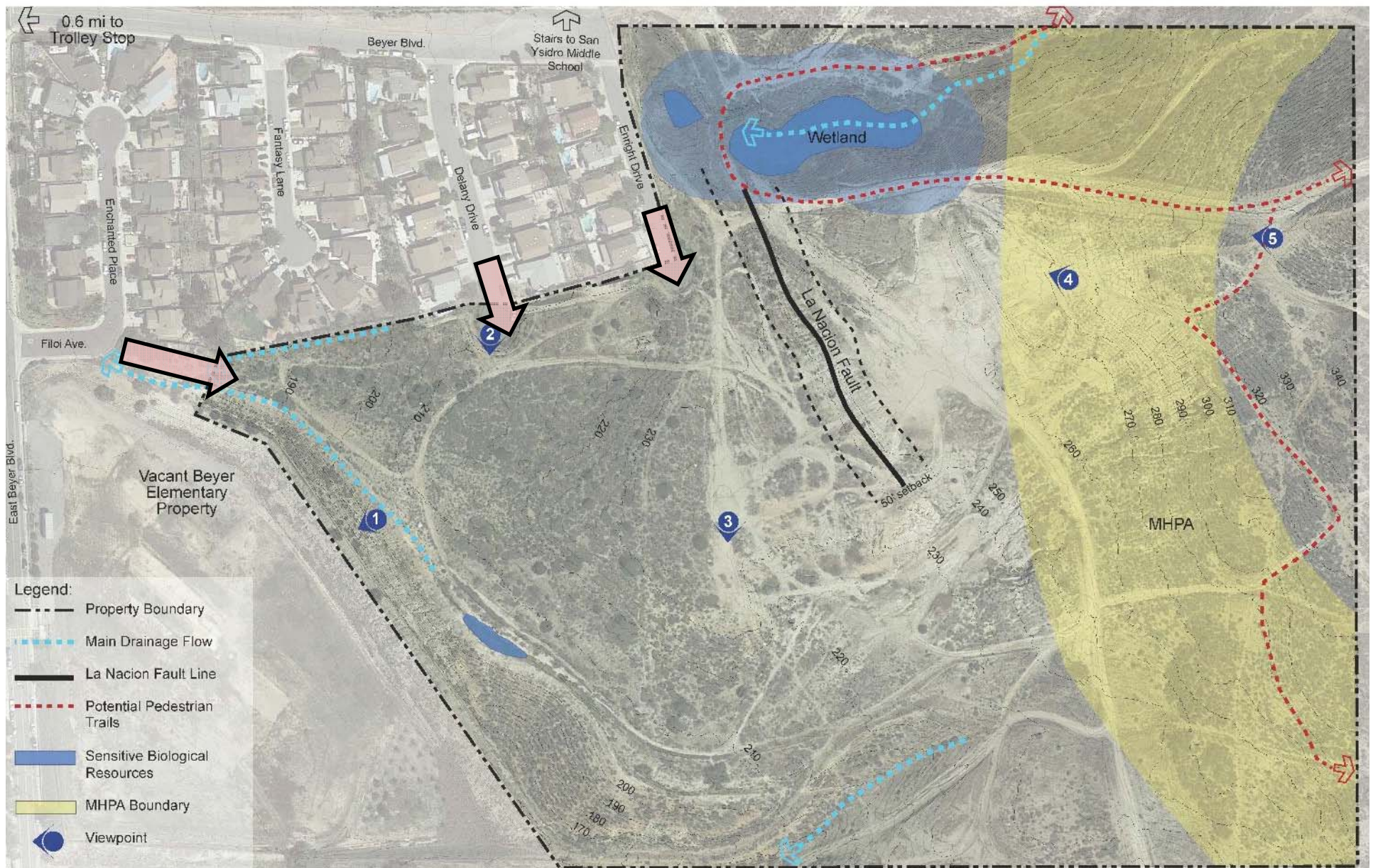
## STEEP SLOPES





# SITE ANALYSIS

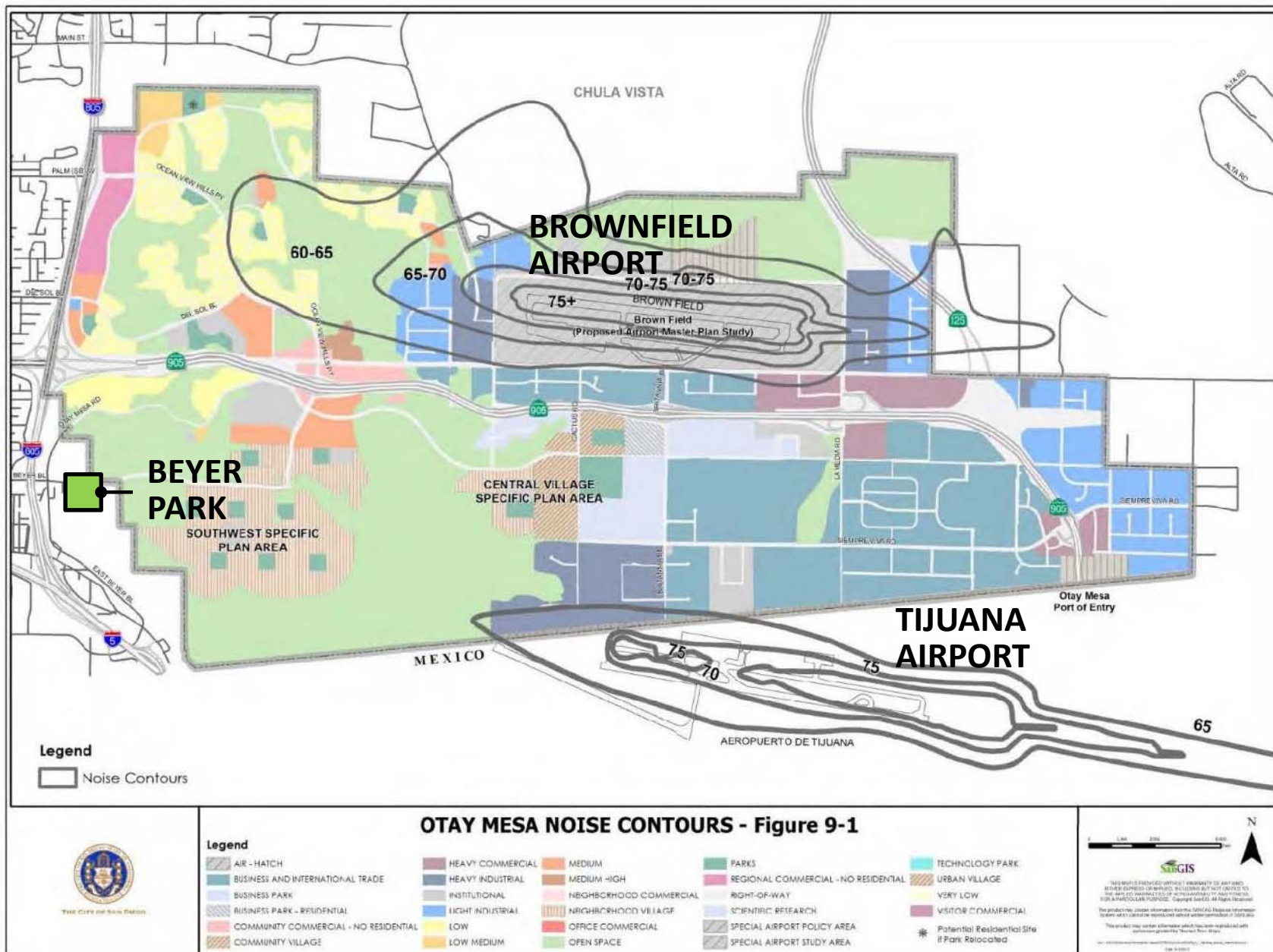
## SITE ACCESS





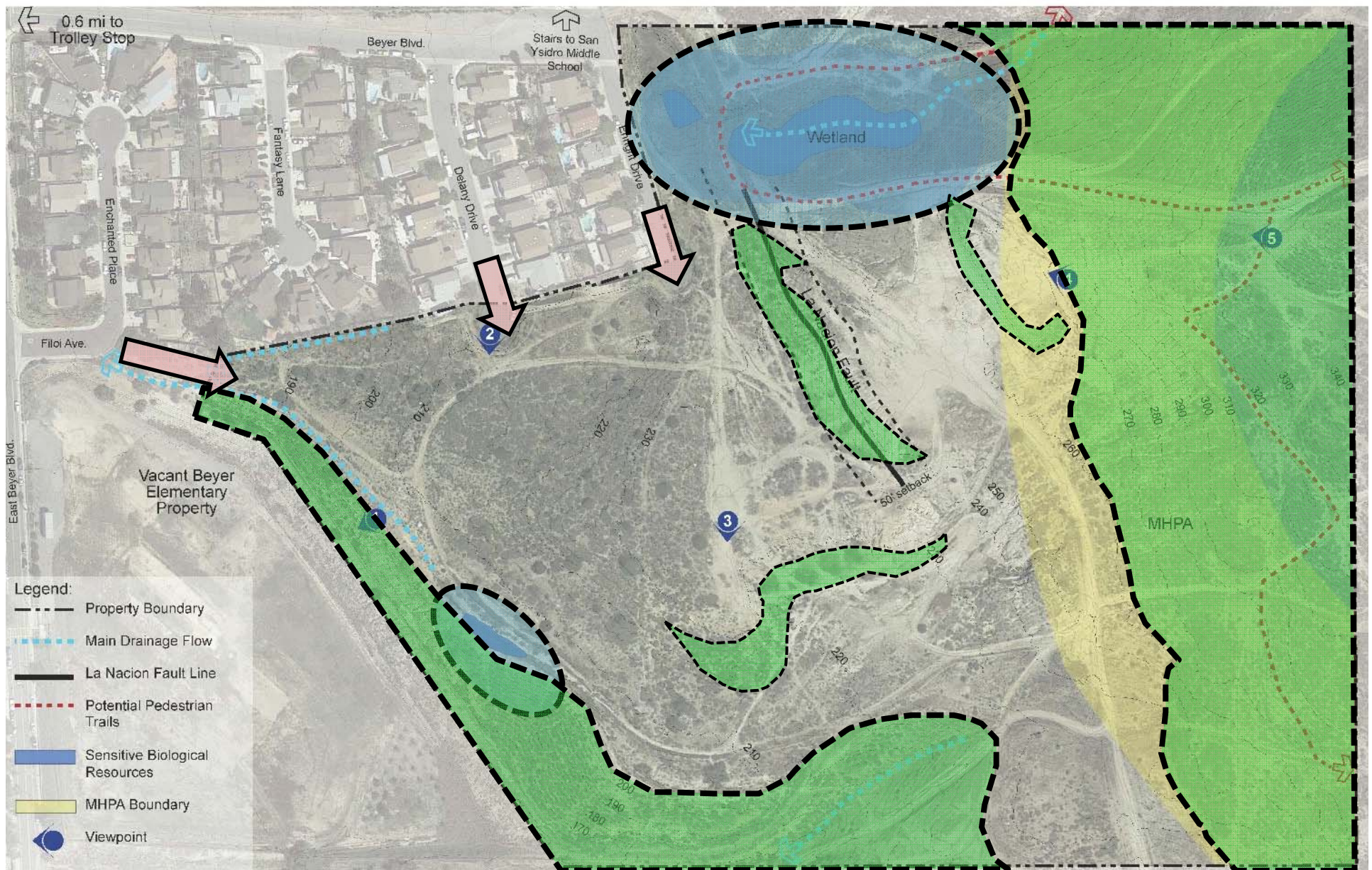
## SITE ANALYSIS

### NEARBY AIRPORTS





# SITE ANALYSIS







## PROJECT SITE FEEDBACK

### Questions & Feedback







# Preliminary Park Amenities

BEYER COMMUNITY PARK



SCHMIDT DESIGN GROUP, INC.



# PARK PRECEDENT

## MULTI-USE TURF FIELD WITH SPORTS LIGHTING



Balancing artistic expression in design with environmental sensitivity





## PARK PRECEDENT SPORTS COURTS



Full basketball court with lights



Multi-use court

Photo Credit: Mark Ylen/Democrat Herald



Half court basketball

Balancing artistic expression in design with environmental sensitivity





# PARK PRECEDENT

## SKATE PARK



Skate Park



Skate Plaza





# PARK PRECEDENT

## BIKE PARK



BMX Track



Pump Track

Balancing artistic expression in design with environmental sensitivity





# PARK PRECEDENT

## RC COURSE



Remote Control Car Track

Balancing artistic expression in design with environmental sensitivity





# PARK PRECEDENT

## CHILDREN'S PLAY



Balancing artistic expression in design with environmental sensitivity





# PARK PRECENDENT

## NATURAL PLAY



Balancing artistic expression in design with environmental sensitivity





# PARK PRECENDENT

## FITNESS NODES



Balancing artistic expression in design with environmental sensitivity





# PARK PRECEDENT

## PICNIC FACILITIES



Balancing artistic expression in design with environmental sensitivity





# PARK PRECEDENT

## PERIMETER TRAIL



Balancing artistic expression in design with environmental sensitivity





# PARK PRECEDENT OVERLOOKS



Balancing artistic expression in design with environmental sensitivity





# PARK PRECEDENT

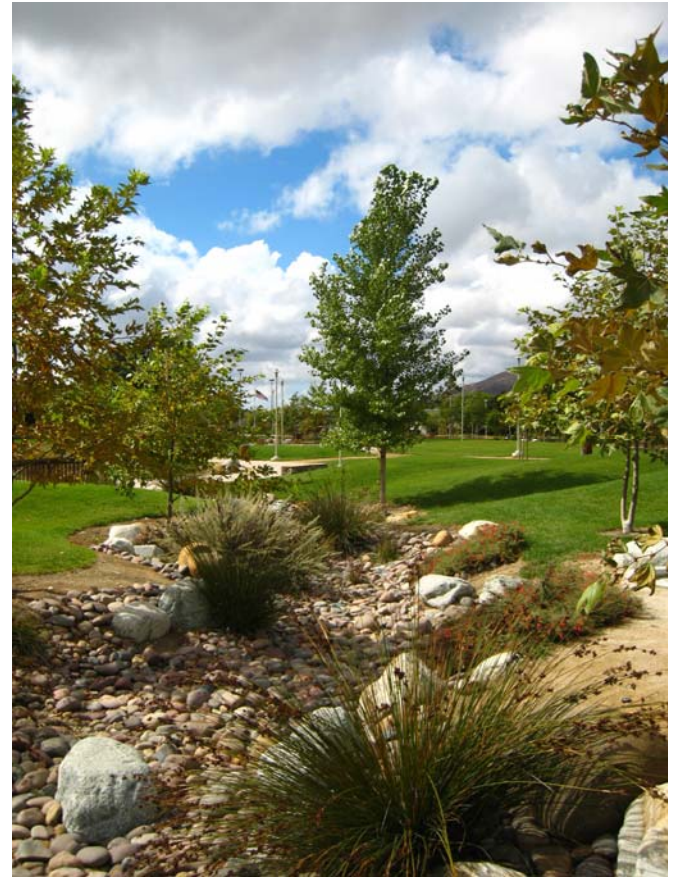
## AMPHITHEATER / GATHERING SPACE





# PARK PRECEDENT

## STORMWATER FEATURES







Balancing artistic expression in design with environmental sensitivity





# SAN YSIDRO COMMUNITY PLAN

Parks And Recreation Facilities	Existing Usable Acreage	Proposed Usable Acreage	Parks And Recreation Facilities Descriptions	Parks And Recreation Facilities Recommendations
<b>Neighborhood Parks</b>			   	
Beyer Park	0.0	5.0	Proposed neighborhood park on undeveloped City Park and Recreation Department property. This site has approximately 12.5 usable acres, which will be shared with Otay Mesa (5.0 acres San Ysidro and 7.5 acres Otay Mesa).	Complete the General Development Plan (GDP). Design and construct amenities such as: lighted multipurpose turf sports fields, a skate park, a lighted basketball court, children's play areas, comfort station/concession building, picnic facilities (including picnic shelter, parking areas, viewpoints/overlooks and interpretive signage), bicycle lanes and bike racks, walkways, security lighting, landscaping, trailheads and trails to connect to the Otay Mesa
Coral Gate Neighborhood Park	2.89	0.0		
Howard Lane Neighborhood Park	6.8	0.0		

- Lighted multi-purpose turf sports fields
- Skate park
- Lighted basketball
- Children's play
- Comfort station/concession
- Picnic facilities
- Bicycle lanes and bike racks
- Walkways
- Security lighting
- Landscaping
- Trailheads and trails



# OTAY MESA COMMUNITY PLAN

Name	Location	Size (useable acres)	Description	Expected Completion Date
Ocean View Hills Neighborhood Park	Ocean View Hills Parkway	5.1	This neighborhood park provides children's play areas, picnic facilities, parking, passive lawn areas and landscaping.	Completed
Ocean View Hills Joint-Use Area	Ocean View Hills K-8 School	5.0	This 5.0 acre joint-use area is adjacent to Ocean View Hills K-8 School located on Del Sol Boulevard. The 25-year joint-use agreement with the San Ysidro School District commenced in 2005 and expires in 2030. Turfed fields have been installed, and future improvements may include a baseball backstop, a skinned infield, and sports field lighting.	Completed
Vista Pacifica Neighborhood Park	Avenida De Las Vistas	6	This neighborhood park provides children's play areas, picnic facilities, parking, passive lawn areas and landscaping.	Completed
Beyer Community Park	Southwest District	7.5	This community park may include a comfort station with a concession and storage area, basketball courts, multi-use turf fields with sports lighting, picnic areas, parking and children play areas.	Dates to be provided by Facilities
Hidden Trails Neighborhood Park	Northwest District	3.7	This park will provide play areas, parking, picnic facilities, and landscaping.	
Denney Ranch Neighborhood Park	Northwest District	11.1	This park will provide play areas, parking, picnic facilities, and landscaping.	
Pacific Breezes Community Park	Northwest District	15.1	This park will provide play areas, parking, picnic facilities, and landscaping.	to be provided by the City
Riviera Del Sol Neighborhood Park	Northwest District	4.9	This park will provide play areas, parking, picnic facilities, and landscaping.	

- Comfort station with concession and storage area
- Basketball courts
- Multi-use turf fields with sports lighting
- Picnic areas
- Parking
- Children's play



## PRELIMINARY PROGRAM ELEMENTS

- Community Building (17,000sf)
- Comfort Station
- Multi-use turf fields with sports lighting
- Basketball Court(s)
- Picnic Facilities
- Children's Play Area
- Bike racks
- Walkways
- Security lighting
- Landscaping
- Trailheads and trails
- Skate park
- Viewpoints, overlooks, and interpretive signage

Note: This preliminary list is based on Otay Mesa's Community Plan and San Ysidro's Community Plan.



## PRELIMINARY PROGRAM ELEMENTS

- Community Building (17,000sf)
- Comfort Station
- Multi-use turf fields with sports lighting
- Basketball Court(s)
- Picnic Facilities
- Children's Play Area
- Bike racks
- Walkways
- Security lighting
- Landscaping
- Trailheads and trails
- Skate park
- Viewpoints, overlooks, and interpretive signage
- **Other amenities?**





# Next Steps

BEYER COMMUNITY PARK



SCHMIDT DESIGN GROUP, INC.



## NEXT STEPS



Community Meeting #1: Park Visioning – [Today](#)

Community Meeting #2: Park Design Alternatives – Spring 2017

Community Meeting #3: Draft GDP – Summer 2017





THANK  
YOU

BEYER COMMUNITY PARK



END