



# BEYER COMMUNITY PARK

**COMMUNITY MEETING**  
**SEPTEMBER 11, 2017**



SCHMIDT DESIGN GROUP, INC.



# INTRODUCTIONS

## Recreation Council Chairman

- Bertha Gonzales

## Park and Recreation Contact

- Manuel Gonzales

## City of San Diego - Public Works

- Samir Mahmalji – Project Officer II
- Darren Genova – Project Manager

## Schmidt Design Group, Inc.

- Jeff Justus - Principal
- Jenn Montgomery
- Lindsay Decault





# AGENDA

- Project Background
- Summary of Community Meeting #1
- Overview of Selected Park Amenities
- Overview of Preliminary Concepts
- Questions & Feedback
- Next Steps





# **Community Meeting Feedback**

## **February 13, 2017**

**BEYER COMMUNITY PARK**





# Community Meeting Feedback



What makes your community special?



Describe your community in one word or short phrase on each sticky note.

“WHAT MAKES YOUR COMMUNITY SPECIAL?”

“WHAT CHARACTERISTICS SHOULD THE PARK HAVE?”

**Multicultural / Proximity to Mexico**

**Organic / Native**

**Family Oriented**

**Ocean Views**





**Passive**

**Site History**





# SAN YSIDRO COMMUNITY PLAN

Parks And Recreation Facilities	Existing Usable Acreage	Proposed Usable Acreage	Parks And Recreation Facilities Descriptions	Parks And Recreation Facilities Recommendations
<b>Neighborhood Parks</b>			   	
Beyer Park	0.0	5.0	Proposed neighborhood park on undeveloped City Park and Recreation Department property. This site has approximately 12.5 usable acres, which will be shared with Otay Mesa (5.0 acres San Ysidro and 7.5 acres Otay Mesa).	Complete the General Development Plan (GDP). Design and construct amenities such as: lighted multipurpose turf sports fields, a skate park, a lighted basketball court, children's play areas, comfort station/concession building, picnic facilities (including picnic shelter, parking areas, viewpoints/overlooks and interpretive signage), bicycle lanes and bike racks, walkways, security lighting, landscaping, trailhead, and trails to connect to the Otay Mesa
Coral Gate Neighborhood Park	2.89	0.0		
Howard Lane Neighborhood Park	6.8	0.0		

- Lighted multi-purpose turf sports fields
- Skate park
- Lighted basketball
- Children's play
- Comfort station/concession
- Picnic facilities
- Bicycle lanes and bike racks
- Walkways
- Security lighting
- Landscaping
- Trailheads and trails

# OTAY MESA COMMUNITY PLAN

Name	Location	Size (useable acres)	Description	Expected Completion Date
Ocean View Hills Neighborhood Park	Ocean View Hills Parkway	5.1	This neighborhood park provides children's play areas, picnic facilities, parking, passive lawn areas and landscaping.	Completed
Ocean View Hills Joint-Use Area	Ocean View Hills K-8 School	5.0	This 5.0 acre joint-use area is adjacent to Ocean View Hills K-8 School located on Del Sol Boulevard. The 25-year joint-use agreement with the San Ysidro School District commenced in 2005 and expires in 2030. Turfed fields have been installed, and future improvements may include a baseball backstop, a skinned infield, and sports field lighting.	Completed
Vista Pacifica Neighborhood Park	Avenida De Las Vistas	6	This neighborhood park provides children's play areas, picnic facilities, parking, passive lawn areas and landscaping.	Completed
Beyer Community Park	Southwest District	7.5	This community park may include a comfort station with a concession and storage area, basketball courts, multi-use turf fields with sports lighting, picnic areas, parking and children play areas.	Dates to be provided by Facilities
Hidden Trails Neighborhood Park	Northwest District	3.7	This park will provide play areas, parking, picnic	ing
Dennerly Ranch Neighborhood Park	Northwest District	11.1		
Pacific Breezes Community Park	Northwest District	15.1		be by s g
Riviera Del Sol Neighborhood Park	Northwest District	4.9		

- Comfort station with concession and storage area
- Basketball courts
- Multi-use turf fields with sports lighting
- Picnic areas
- Parking
- Children's play



### DESIRED PARK AMENITIES

- Tennis Courts
- Picnic Facilities
- Frisbee golf
- Comfort Station
- Trailhead – Overlooks
- Dog Park
- Security and Fencing
- Amphitheater
- Racquetball
- Fitness nodes
- Lighted Multi-use court(s)
- Parking
- Bike / Skate Park
- Children's Play
- Lighted Multi-Use Fields





# Park Amenities

## BEYER COMMUNITY PARK



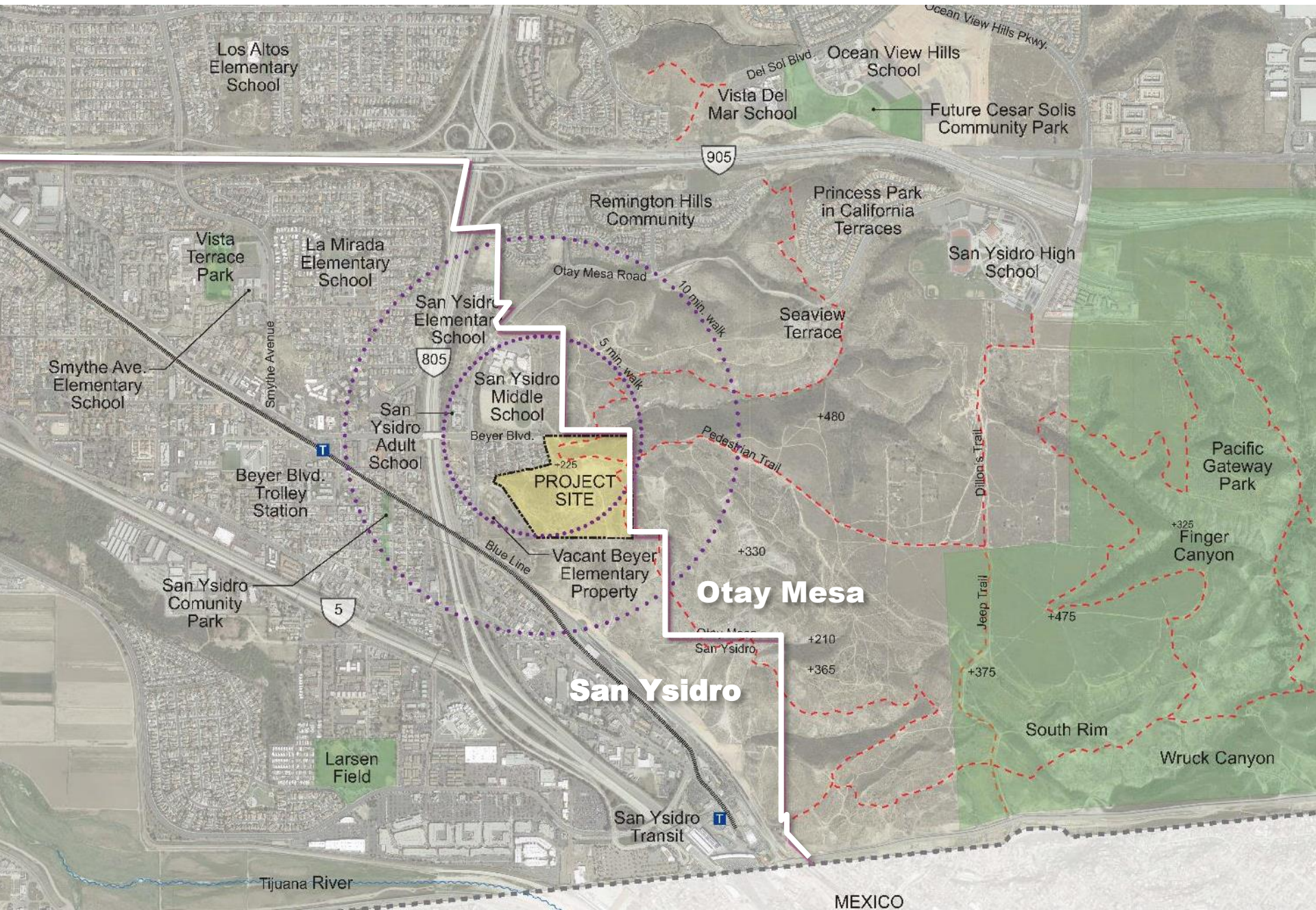
# ANTICIPATED PARK AMENITIES

## ANTICIPATED PARK AMENITIES

- Comfort Station/Storage
- Picnic Facilities/Amphitheater
- Lighted Multi-Use Field(s)
- Lighted Multi-use court(s)
- Children's Play Areas
- Bike/Skate Park Facility
- Dog Park
- Trailhead – Overlooks
- Fitness nodes
- Art & Cultural Integration
- Interpretive Education
- Security and Fencing
- Parking

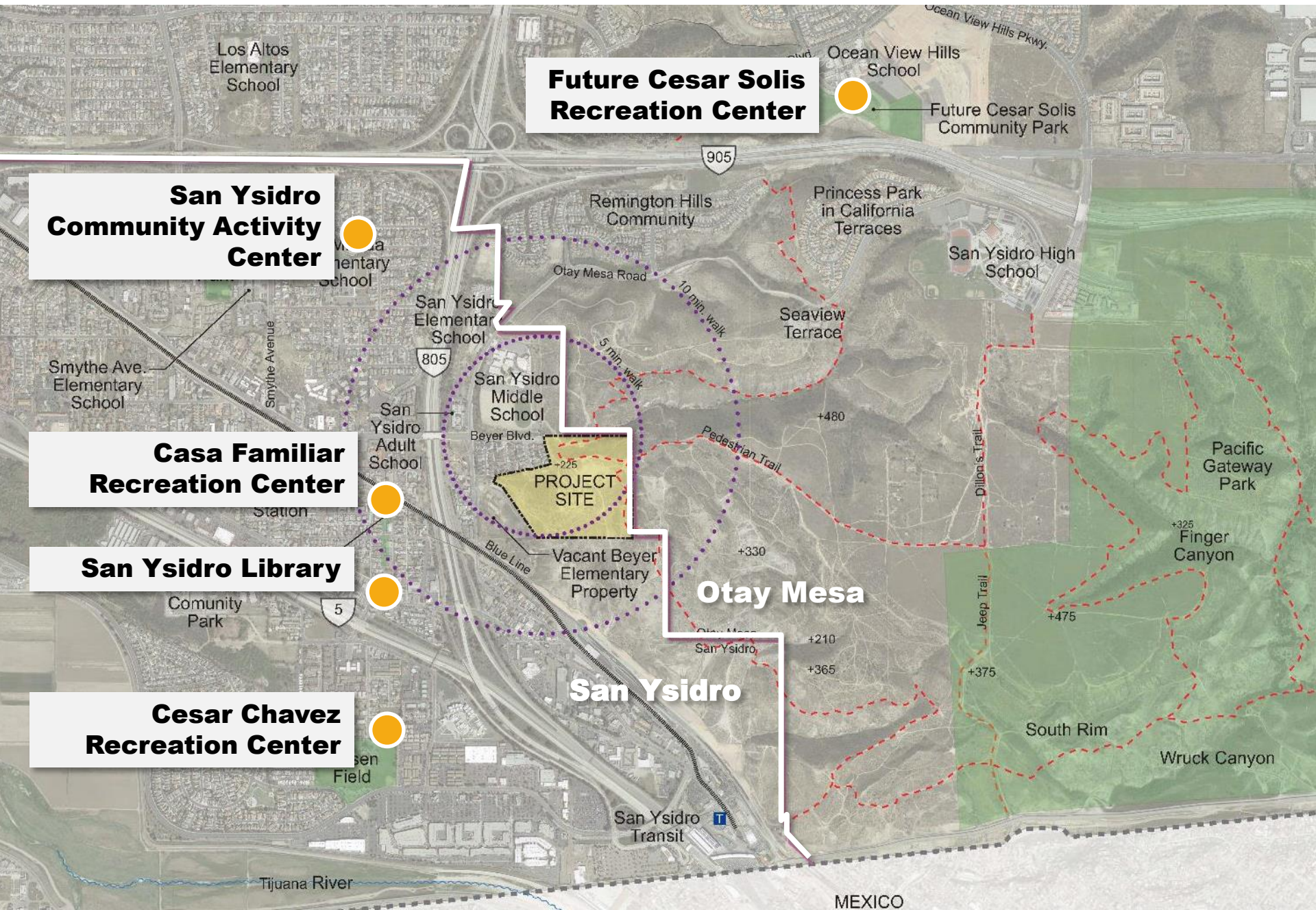


# PROJECT LOCATION





# PROJECT LOCATION



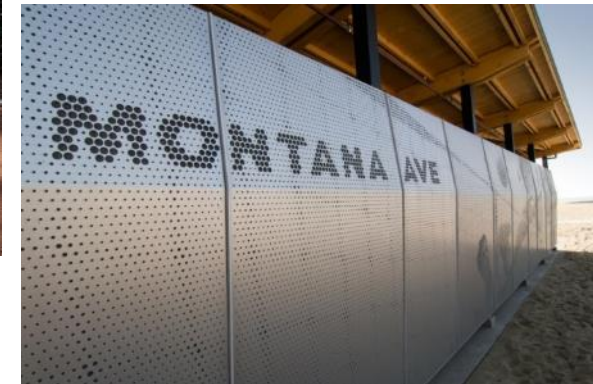


# PARK AMENITIES

## COMFORT STATION – COMMUNITY IDENTITY



Tete d'Or Park  
Restroom Building



Orion Park (Strata Park) Restroom Building



# PARK AMENITIES

## COMFORT STATION – SAFETY AND SECURITY

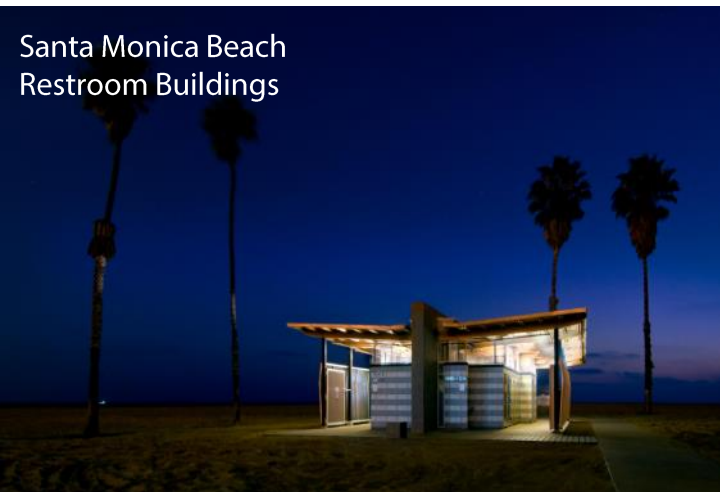
Orion Park  
Restroom Building



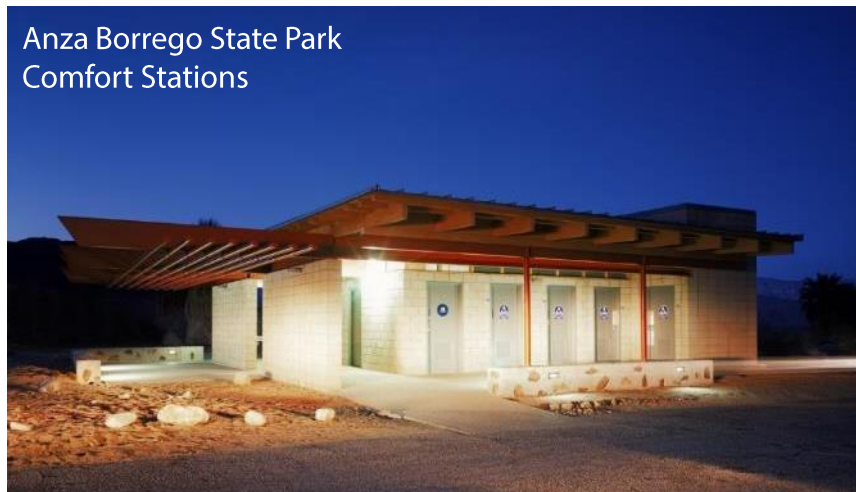
Embarcadero Park  
Restroom Building



Santa Monica Beach  
Restroom Buildings



Anza Borrego State Park  
Comfort Stations



# PARK AMENITIES

## COMFORT STATION – SAFETY AND SECURITY

Santa Monica  
Beach Restrooms



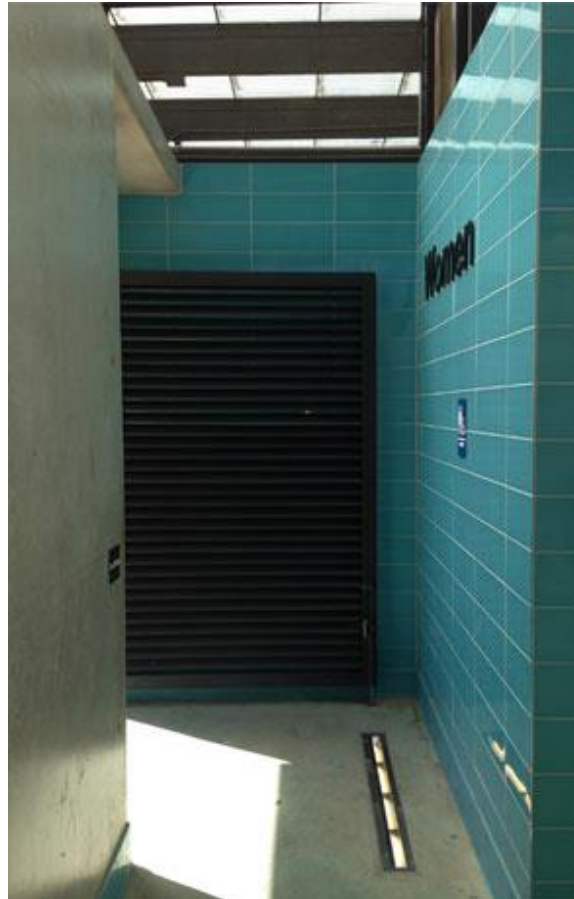


# PARK AMENITIES

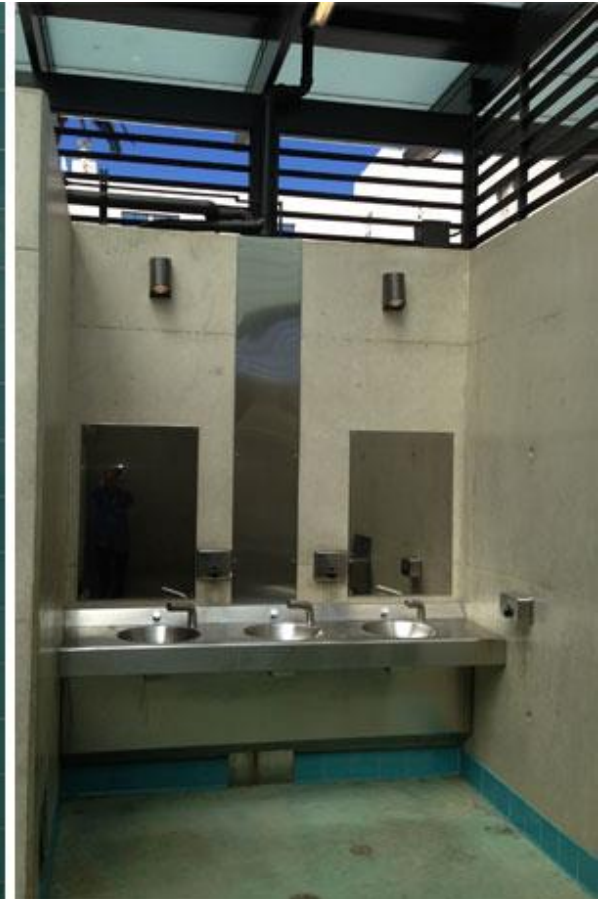
COMFORT STATION – LOW MAINTENANCE AND DURABLE MATERIALS



Santa Monica  
Beach Restrooms



Embarcadero Waterfront  
Park Restroom Building



# PARK AMENITIES

## COMFORT STATION – INTEGRATING ART



La Jolla Shores Lifeguard Station



Santa Monica Beach Restrooms





# PARK AMENITIES

DESIGN CHARACTER



Private Home,  
Ezequiel Farca

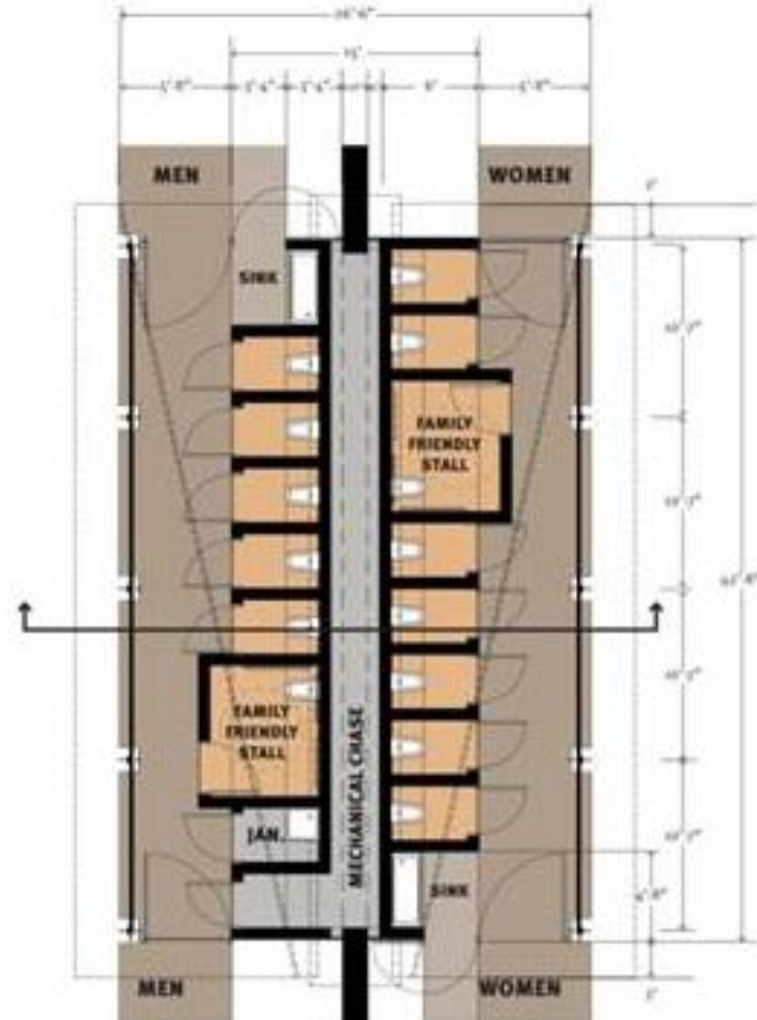
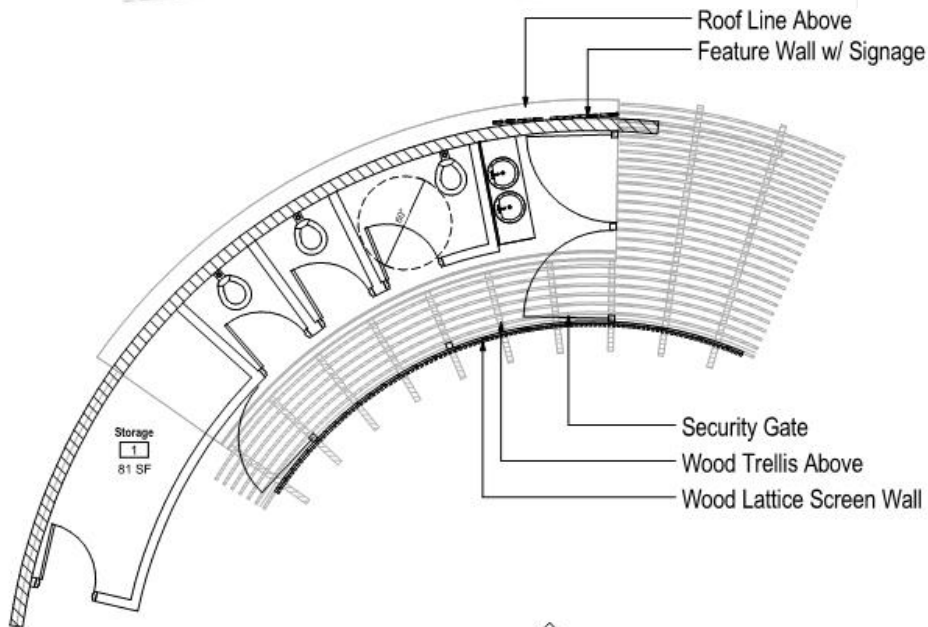


Encuentro Guadalupe  
Gracia Studio



# PARK AMENITIES

## COMFORT STATION – DESIGN CONCEPTS

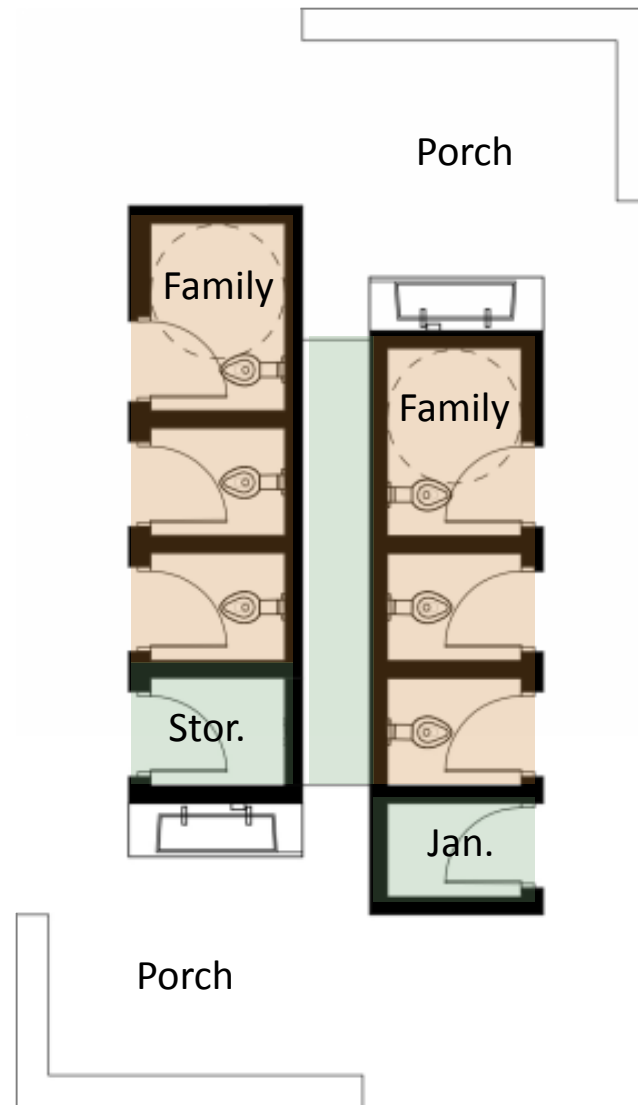


### SHIFT / MERGE

Nature

Cultures

People / Families



# PARK AMENITIES

COMFORT STATION – CONCEPTS

## SHIFT / MERGE

Nature

Cultures

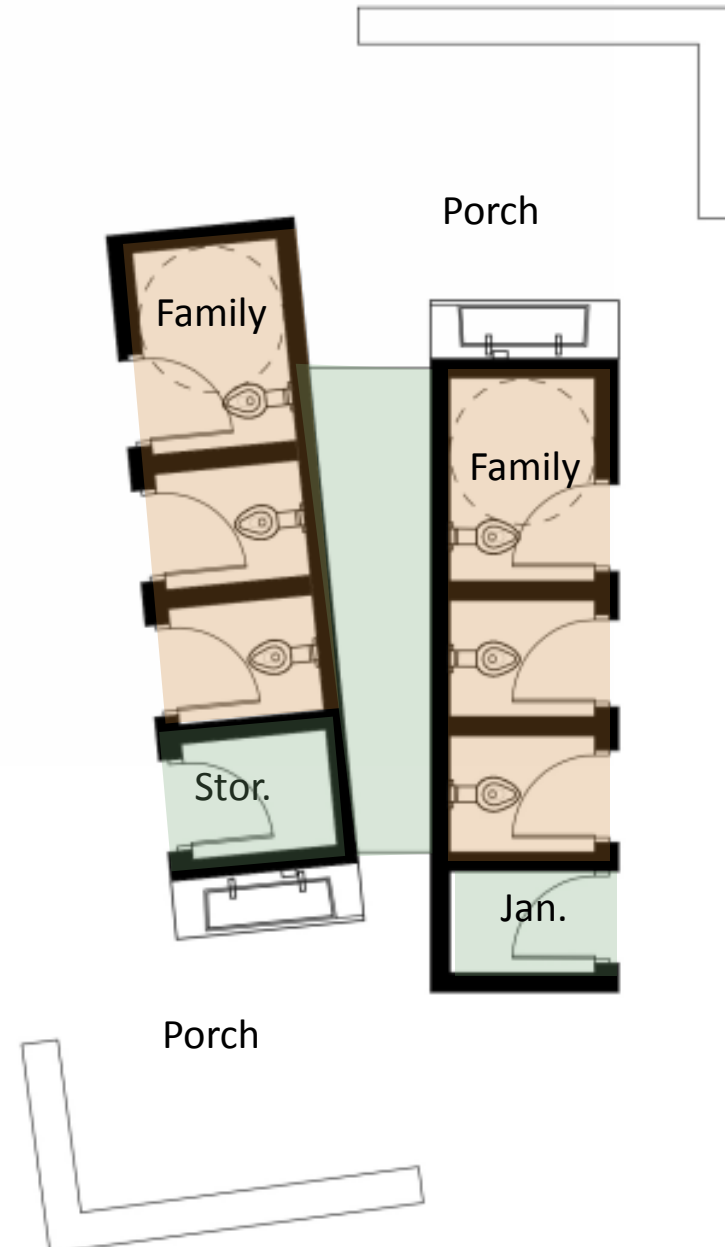
People / Families

## EMERGE

To Rise

Radiate

Prominence





# PARK PRECENDENT

## SHADE/PICNIC FACILITIES





# PARK PRECENDENT

AMPHITHEATER / GATHERING SPACE



BALANCING ARTISTIC EXPRESSION IN DESIGN WITH ENVIRONMENTAL SENSITIVITY



# PARK AMENITIES

MULTIPURPOSE TURF



COTTONWOOD CREEK PARK





# PARK PRECENDENT

MULTI-USE TURF FIELD WITH SPORTS LIGHTING





# PARK PRECENDENT

## SPORTS COURTS



FULL BASKETBALL COURT WITH LIGHTS



MULTI-USE COURT

Photo Credit: Mark Ylen/Democrat Herald



HALF COURT BASKETBALL





# PARK PRECEDENT

## PLAYGROUNDS



COTTONWOOD CREEK PARK



# PARK PRECEDENT

TRADITIONAL PLAY





# PARK PRECENDENT

NATURAL PLAY





# PARK PRECEDENT

## SKATE PARK



WINDING WALK PARK SKATE PLAZA

PENESQUITOS SKATE PARK





BMX Track



Pump Track







LARGE AND SMALL DOG OFF LEASH FACILITIES







CAMINO RUIZ PARK





# PARK PRECEDENT

TRAILS / OVERLOOKS





# PARK PRECENDENT

FITNESS NODES





# **PARK PRECEDENT**

## ART AND CULTURAL INTEGRATION



PINE AVENUE PARK





# PARK PRECEDENT

## ART AND CULTURAL INTEGRATION



CAMINO RUZ PARK





# **PARK PRECEDENT**

## ART AND CULTURAL INTEGRATION



BRIERCREST PARK







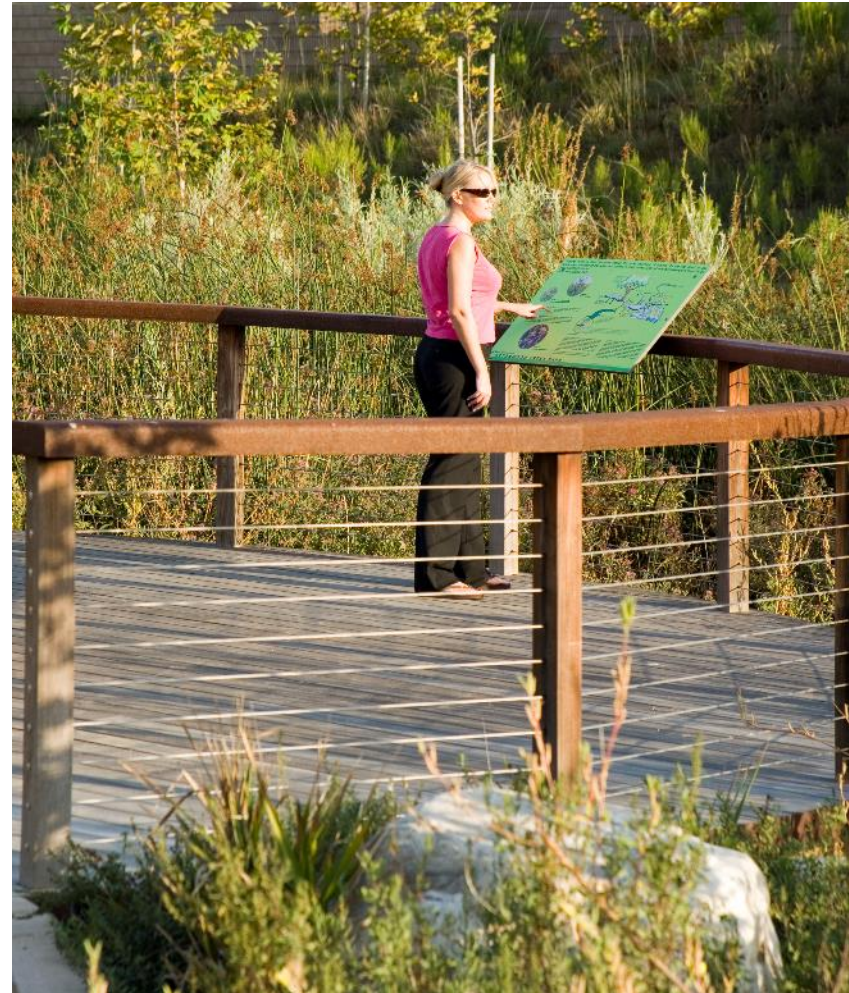
CAMINO RUIZ PARK







COTTONWOOD CREEK PARK





# **PARK PRECEDENT**

## STORMWATER INTEGRATION / EXPLORATION



STORMWATER INTEGRATION / EXPLORATION





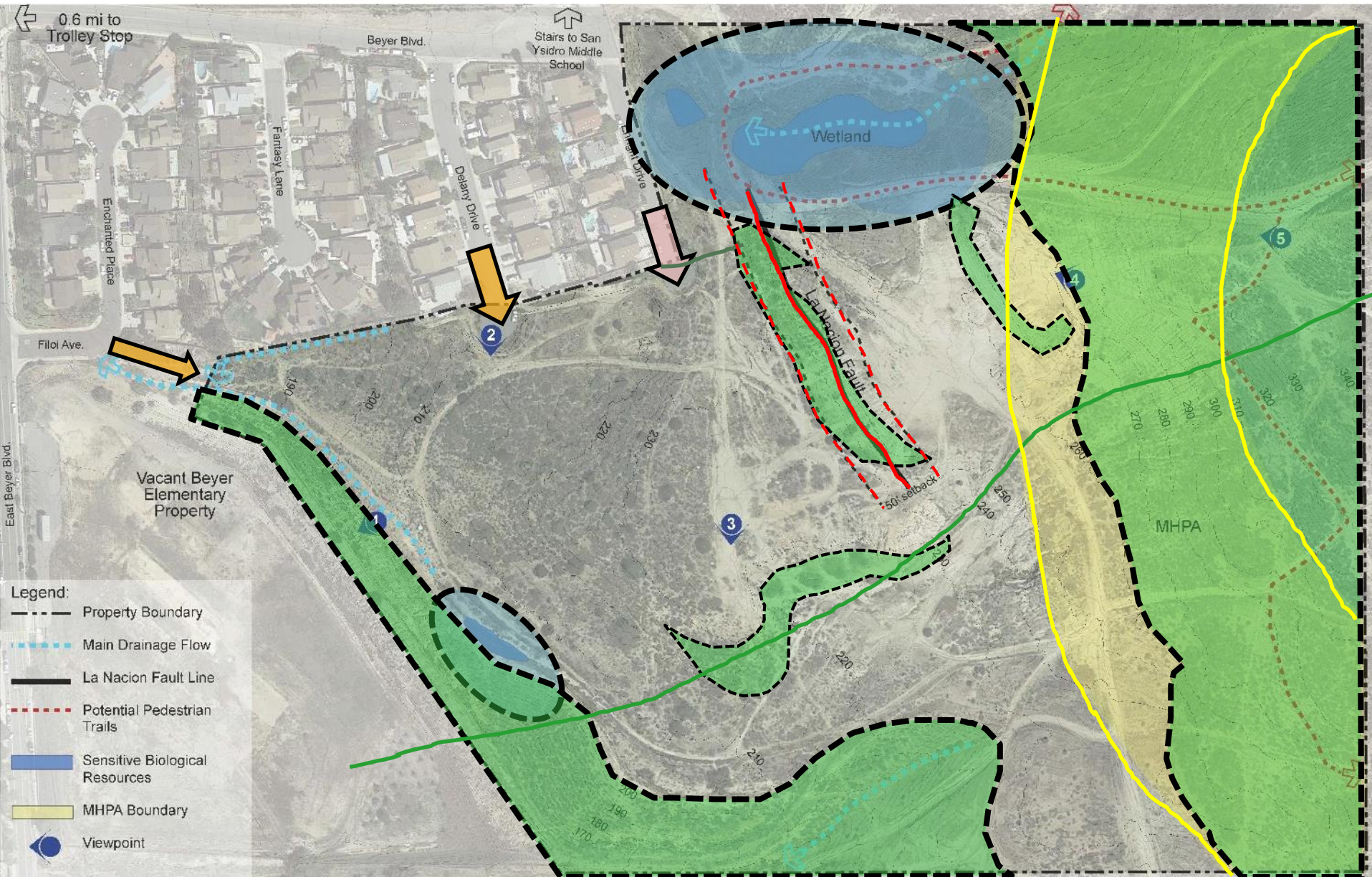


# ALTERNATIVES

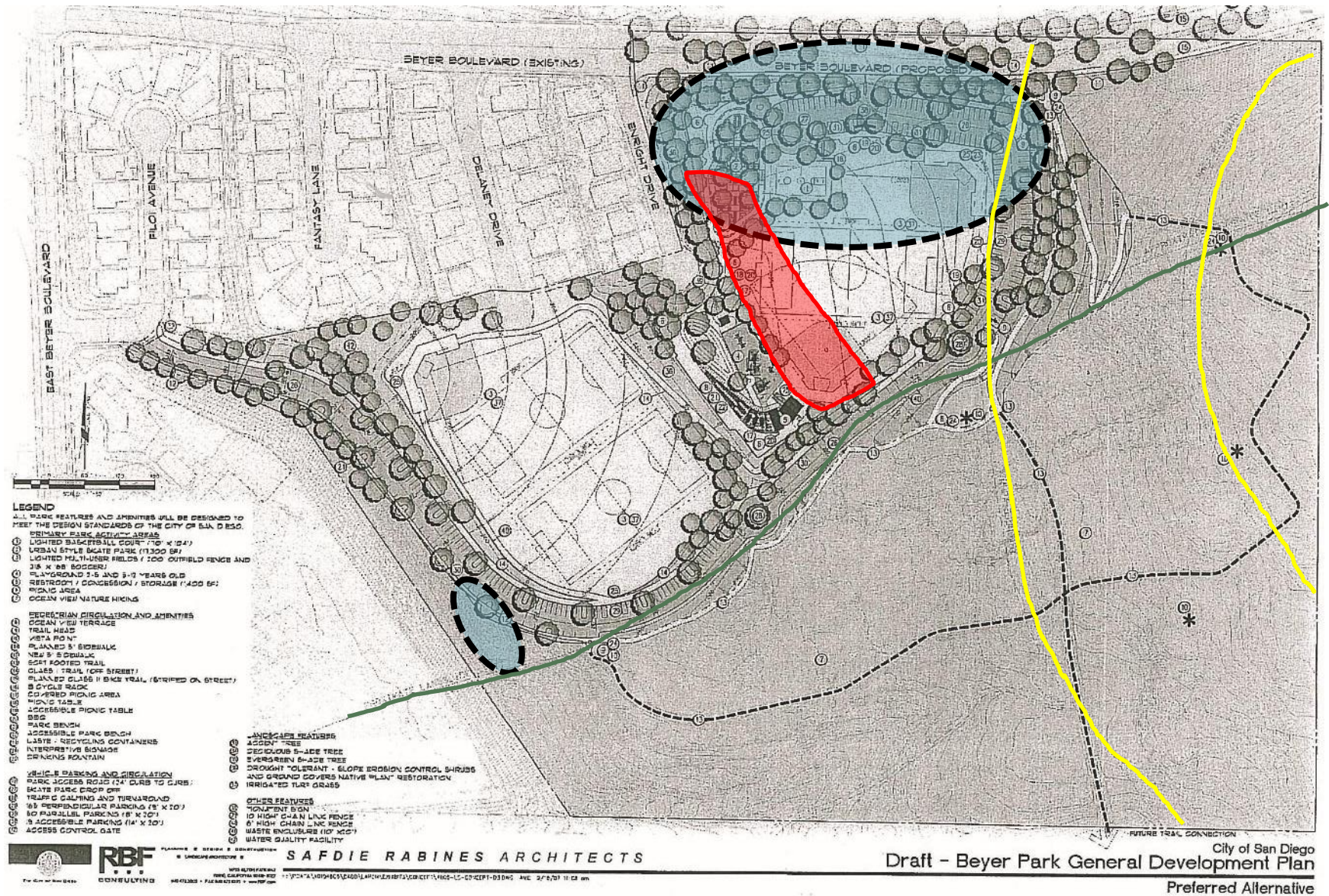
## BEYER COMMUNITY PARK



# SITE CONSTRAINTS



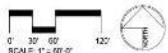






## KEY

- 1 PARKING LOT (+/- 60 SPACES)
- 2 SOFTBALL INFIELD
- 3 MULTI-USE SPORTS FIELD  
1 ADULT SOCCER FIELD OR  
2 YOUTH - U10 FIELDS
- 4 PICNIC PLAZA
- 5 CHILDREN'S PLAY AREA
- 6 DOG PARK
- 7 MULTI-USE COURT
- 8 SKATE PARK OR PUMP TRACK
- 9 ENTRY MONUMENT SIGN
- 10 PEDESTRIAN ACCESS (TYPICAL)
- 11 VEHICULAR ACCESS (TYPICAL)
- 12 OVERLOOK
- 13 OPEN SPACE TRAILS
- 14 ENVIRONMENTALLY SENSITIVE AREA
- 15 COMFORT STATION
- 16 STORAGE BUILDING (+/- 500 SF)



SCHWEDT DESIGN GROUP, INC.  
3000 LA JOLLA VILLAGE DRIVE, SUITE 100  
LA JOLLA, CA 92037  
TEL: 858.592.1234  
WWW.SCHWEDTDESIGN.COM

The City of  
**SAN DIEGO**

CONCEPT PLAN - ALTERNATIVE 1

**BEYER PARK**

2011.09.11



# KEY

- 1 PARKING LOT (+/- 60 SPACES)
- 2 AMPHITHEATRE
- 3 SOCCER FIELD
- 4 PICNIC PLAZA
- 5 CHILDREN'S PLAY AREA
- 6 DOG PARK
- 7 MULTI-USE COURT
- 8 ENTRY MONUMENT
- 9 PEDESTRIAN ACCESS
- 10 VEHICULAR ACCESS
- 11 OVERLOOK
- 12 OPEN SPACE TRAILS
- 13 COMFORT STATION
- 14 STORAGE BUILDING
- 15 ENVIRONMENTALLY SENSITIVE AREA



SCHWEDT DESIGN GROUP, INC.  
10000 SAN DIEGO AVENUE, SUITE 100  
SAN DIEGO, CA 92131  
TEL: 619.594.1100  
WWW.SCHWEDTDESIGN.COM

The City of  
**SAN DIEGO**

CONCEPT PLAN - ALTERNATIVE 2

**BEYER PARK**

2011.09.11





# AMENITIES EXERCISE

**BEYER COMMUNITY PARK**



RESTROOM CHARACTER



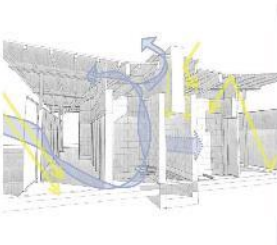
1 CURVILINEAR FORMS



2 CONTEMPORARY FORMS



3. NATURAL MATERIALS & COLORS



4. NATURAL LIGHTING & VENTILATION

TRAILS AND OVERLOOKS



1 OPENSOURCE TRAILS



2 OVERLOOK



3 PERIMETER DECOMPOSED GRANITE LOOP TRAIL



4 TRAIL HEAD

SHADE



1. COLORFUL PANELS



2. OPEN TRELLIS



3. COVERED ROOF



4. SHADE FABRIC / SAILS



SKATE PARK



1. LARGE SKATE PARK



2. SMALL SKATE PLAZA



3. PAVED PUMP TRACK



4. BMX TRACK

TURF SPORTS FIELD



1. LIGHTED SOCCER FIELD



2. LIGHTED SOFTBALL FIELD

FITNESS



1. FITNESS NODE



2. NATURAL FITNESS TRAIL

SPORT COURTS



1. LIGHTED BASKETBALL



2. HALF COURT BASKETBALL



3. LIGHTED MULTI USE COURT



CHILDREN'S PLAY



1 CHILDREN'S PLAY



2 NATURAL PLAY



3 CLIMBING WALL



4 PLAY ON SLOPE

ART AND INTERPRETIVE EDUCATION



1 ART INTEGRATION AT RESTROOM



2 ART/INTERPRETIVE EDUCATION



3 MOSAIC ART



4 ART/INTERPRETIVE EDUCATION HIGHLIGHTING SITE GEOLOGY

DOG PARK



1. DOG PARK

COMMUNITY GATHERING SPACES



1. OPEN AMPHITHEATER



2. COVERED AMPHITHEATER



## Questions & Feedback





- San Ysidro/Otay Mesa Recreation Council
  - Informational Meeting Feb 2017
  - Park Alternatives September 2017
  - **Draft GDP Winter 2017**
- CEQA Processing
  - Draft MND Document Winter 2018
  - Final MND Document Spring 2019
- Park and Recreation Board Approval
  - Final GDP Spring 2019







# THANK YOU

## BEYER COMMUNITY PARK



