



## Construction Site Guidelines

All projects authorized through the City of San Diego Development Services Department or the City's [Capital Improvements Program](#) must comply with all storm water best management practices requirements pursuant to the [City of San Diego Municipal Code](#) and [Storm Water Standards Manual](#).

The [Storm Water Requirements Applicability Checklist \(Form: DS-560\)](#) will help project applicants determine which requirements apply to a project. Projects that have a total land disturbance of 1 acre or more and do not qualify for a rainfall erosivity waiver or require coverage under the state Construction General Permit (CGP) will need to prepare a Storm Water Pollution Prevention Plan. Projects not subject to the CGP must prepare a Water Pollution Control Plan (WPCP).

### Best Management Practices (BMPs)

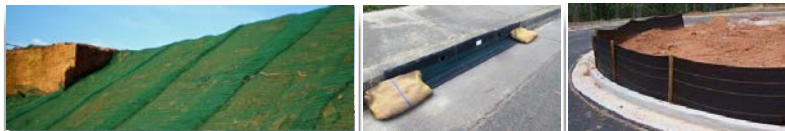
BMPs are procedures and practices implemented to prevent, eliminate or reduce pollution in storm water runoff from construction sites. The Storm Water Pollution Prevention Plan and WPCP must identify project-specific BMPs and include details for implementation. Here are examples of common BMPs:

- **Material Management:** Store materials in a designated area, off the ground or within secondary containment.
- **Stockpile Management:** Stabilizing and berm stockpiles or implement perimeter controls at the end of each day and prior to rain.
- **Waste Management:** Debris and non-hazardous waste must be collected, contained and covered in designated areas at the end of each day and prior to each rain.
- **Concrete Waste Management:** Place concrete washout on level ground within secondary containment.
- **Perimeter Controls:** Install along the edge of the project to prevent pollutants from leaving the site.
- **Erosion Controls:** Apply erosion controls as soon as grading and/or excavation are completed or inactive for 14 days.
- **Tracking Controls:** Install tracking controls at project entrance and exits and remove tracked material deposited to adjacent streets.

**All project applicants must complete a Storm Water Requirements Applicability Checklist (Form DS-560).**

Download the form at:  
[www.sandiego.gov/ds-560](http://www.sandiego.gov/ds-560)





### Water Pollution Control Plan (WPCP)

The WPCP is a written plan submitted to the City for projects that do not require coverage under the state CGP. The WPCP documents the series of phases and activities that characterize the construction site and describes actions which will be implemented to reduce or eliminate discharges of pollutants to the storm drain conveyance system during construction. The WPCP must:

- Identify the site priority and site features, such as adjacent to sensitive habitat;
- Identify the qualified contact person that will be responsible for self-inspections;
- Identify BMPs that will be implemented;
- Be kept onsite; and
- Show the work area, staging areas and BMP locations.

A qualified preparer must develop a WPCP for Priority Development Projects when the project is located:

- Within the Los Peñasquitos Watershed, or
- Within the Tijuana River Watershed, or
- Adjacent to or if it directly discharges to an environmentally sensitive area, or
- If it discharges to areas of special biological significance.

### Hazardous Materials and Spill Clean-up Procedures

- Drips and leaks from vehicles or equipment must be prevented or cleaned up immediately.
- Spill kits must be kept in staging areas or in construction vehicles.
- Any significant release or threatened release of a hazardous material requires immediate reporting by the responsible person to:
  1. The California Governor's Office of Emergency Services State Warning Center at 800-852-7550;
  2. The San Diego County Hazardous Materials Division at 858-505-6880; and
  3. Emergency response at 9-1-1.

### Self-Inspections Requirements

- At 24-hour intervals during extended rainfall events;
- Daily during all phases of construction during the wet season (Oct. 1 to April 30); and
- Weekly during all phases of construction during the dry season (May 1 to Sep. 30).

### Reference

City of San Diego, Storm Water Standards Manual  
([www.sandiego.gov/swsm](http://www.sandiego.gov/swsm))

