



# BEYER COMMUNITY PARK

**COMMUNITY MEETING**

**April 9, 2018**



SCHMIDT DESIGN GROUP, INC.



# INTRODUCTIONS

## Recreation Council Chairman

- Felipe Muro

## Park and Recreation Contact

- Manuel Gonzales

## City of San Diego - Public Works

- Samir Mahmalji – Project Officer II
- Darren Genova – Project Manager

## Schmidt Design Group, Inc.

- Jeff Justus - Principal



# AGENDA

- Project Background
- Updated Draft GDP
- Questions & Feedback
- Next Steps









# Project Background

## BEYER COMMUNITY PARK



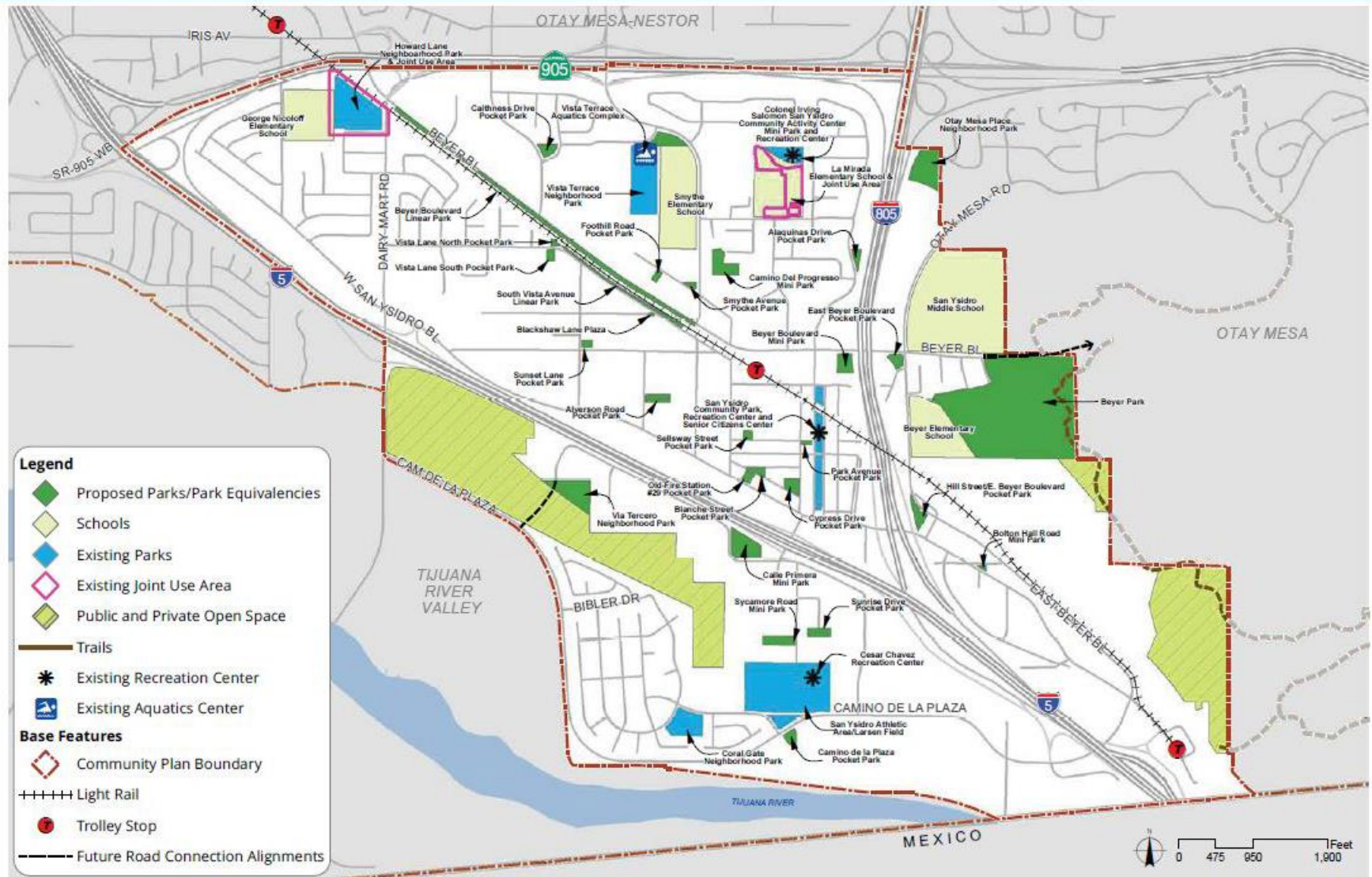
# SAN YSIDRO COMMUNITY PLAN

Parks And Recreation Facilities	Existing Usable Acreage	Proposed Usable Acreage	Parks And Recreation Facilities Descriptions	Parks And Recreation Facilities Recommendations
<b>Neighborhood Parks</b>			   	
Beyer Park	0.0	5.0	Proposed neighborhood park on undeveloped City Park and Recreation Department property. This site has approximately 12.5 usable acres, which will be shared with Otay Mesa (5.0 acres San Ysidro and 7.5 acres Otay Mesa).	Complete the General Development Plan (GDP). Design and construct amenities such as: lighted multipurpose turf sports fields, a skate park, a lighted basketball court, children's play areas, comfort station/concession building, picnic facilities (including picnic shelter, parking areas, viewpoints/overlooks and interpretive signage), bicycle lanes and bike racks, walkways, security lighting, landscaping, trailhead, and trails to connect to the Otay Mesa
Coral Gate Neighborhood Park	2.89	0.0		
Howard Lane Neighborhood Park	6.8	0.0		

- Lighted multi-purpose turf sports fields
- Skate park
- Lighted basketball
- Children's play
- Comfort station/concession
- Picnic facilities
- Bicycle lanes and bike racks
- Walkways
- Security lighting
- Landscaping
- Trailheads and trails

# SAN YSIDRO COMMUNITY PLAN

Figure 7-1: Parks, Recreation Facilities, and Open Space Map



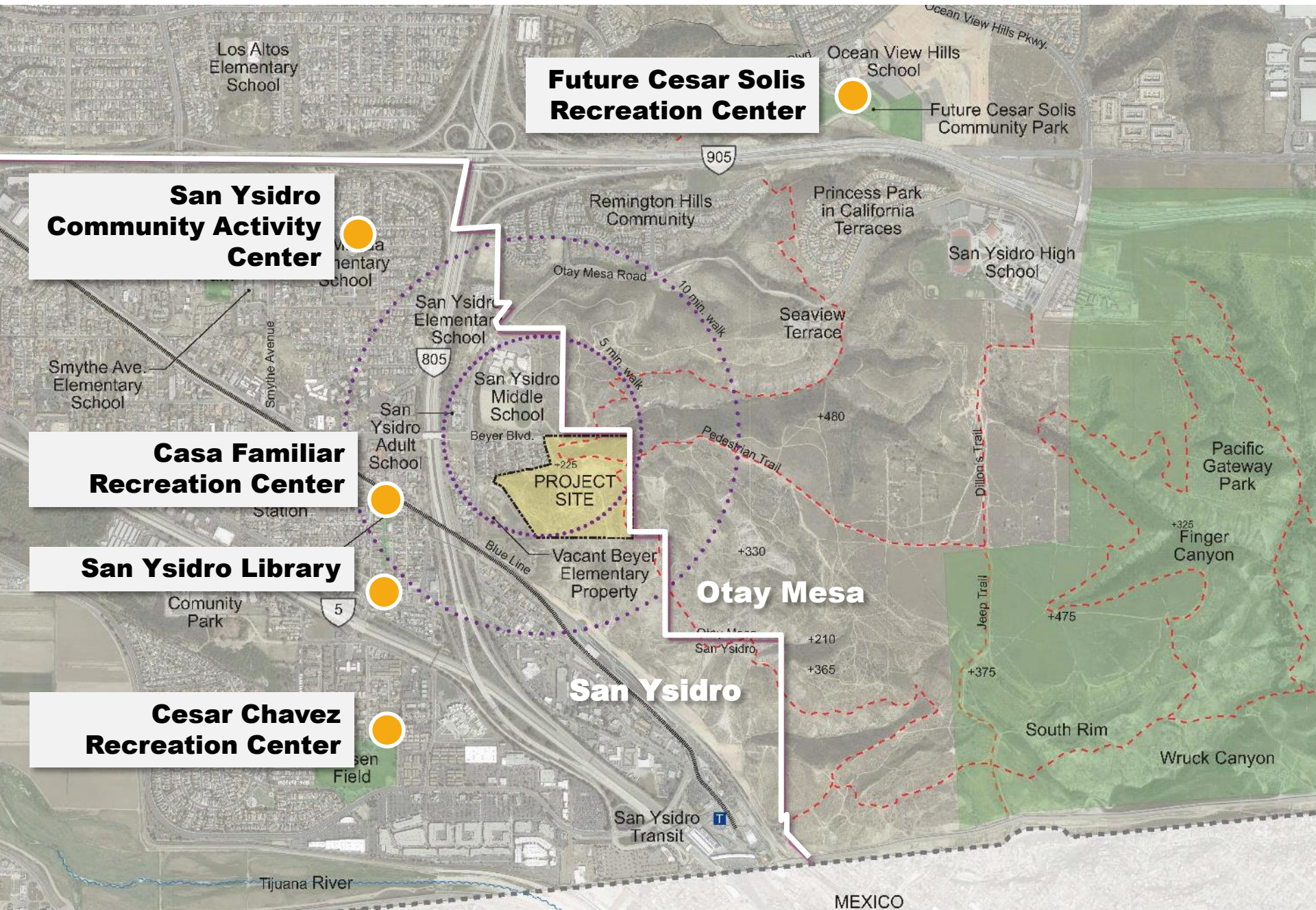
# OTAY MESA COMMUNITY PLAN

Name	Location	Size (useable acres)	Description	Expected Completion Date
Ocean View Hills Neighborhood Park	Ocean View Hills Parkway	5.1	This neighborhood park provides children's play areas, picnic facilities, parking, passive lawn areas and landscaping.	Completed
Ocean View Hills Joint-Use Area	Ocean View Hills K-8 School	5.0	This 5.0 acre joint-use area is adjacent to Ocean View Hills K-8 School located on Del Sol Boulevard. The 25-year joint-use agreement with the San Ysidro School District commenced in 2005 and expires in 2030. Turfed fields have been installed, and future improvements may include a baseball backstop, a skinned infield, and sports field lighting.	Completed
Vista Pacifica Neighborhood Park	Avenida De Las Vistas	6	This neighborhood park provides children's play areas, picnic facilities, parking, passive lawn areas and landscaping.	Completed
Beyer Community Park	Southwest District	7.5	This community park may include a comfort station with a concession and storage area, basketball courts, multi-use turf fields with sports lighting, picnic areas, parking and children play areas.	Dates to be provided by Facilities
Hidden Trails Neighborhood Park	Northwest District	3.7	This park will provide play areas, parking, picnic	ing
Denney Ranch Neighborhood Park	Northwest District	11.1		
Pacific Breezes Community Park	Northwest District	15.1		be by s g
Riviera Del Sol Neighborhood Park	Northwest District	4.9		

- Comfort station with concession and storage area
- Basketball courts
- Multi-use turf fields with sports lighting
- Picnic areas
- Parking
- Children's play



# PROJECT LOCATION



# PROJECT BACKGROUND

## CITY GDP PROCESS

- San Ysidro/Otay Mesa Recreation Council
  - Informational Meeting Feb 2017
  - Park Alternatives September 2017
  - Draft GDP Feb 12, 2018
  - **Draft GDP Today**
- CEQA Processing
  - Draft MND Document Winter 2018
  - Final MND Document Spring 2019
- Park and Recreation Board Approval
  - Final GDP Spring/Summer 2019

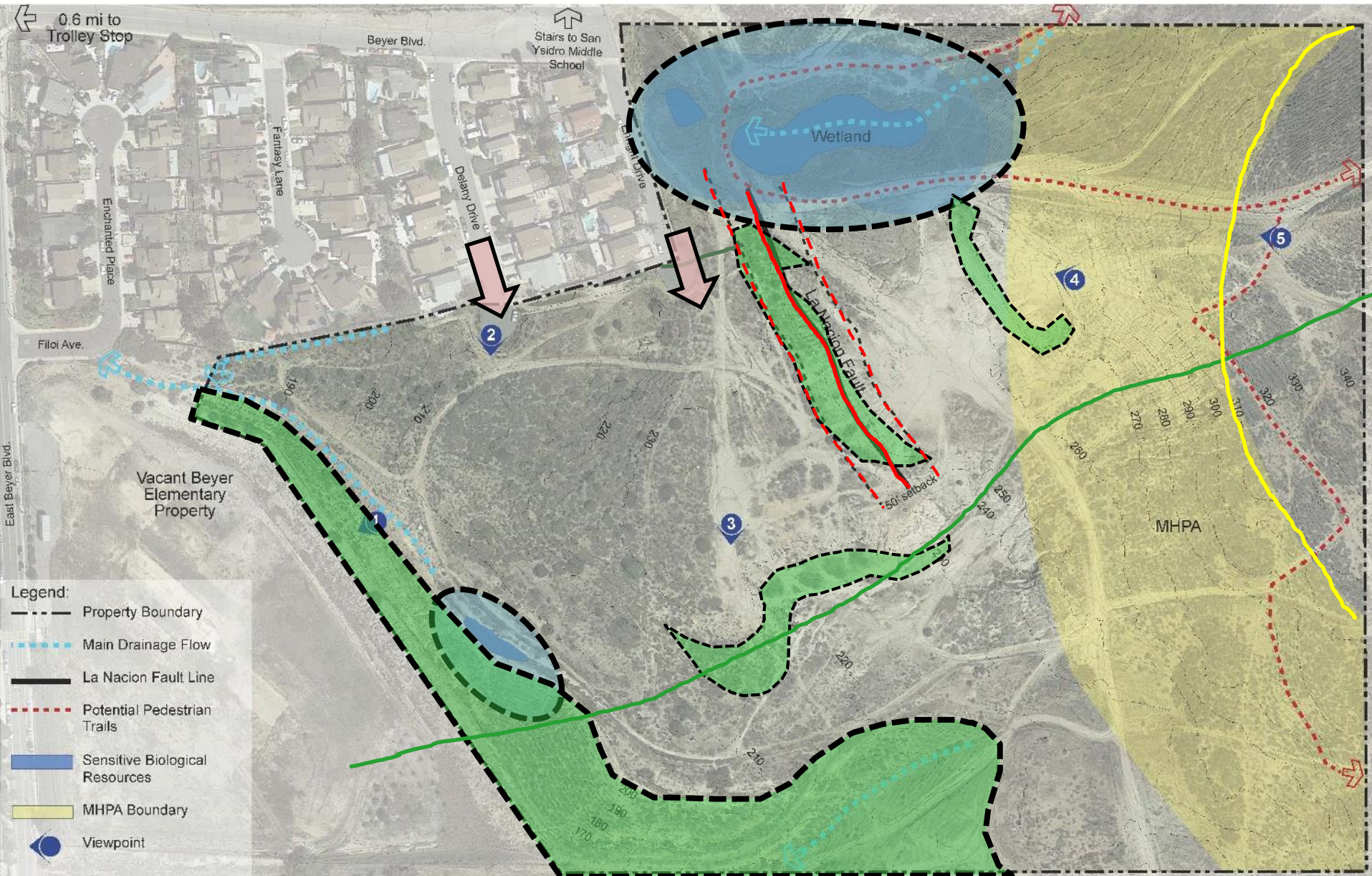


# SITE CONSTRAINTS ANALYSIS

- Biological resources on the North, South, East and West
- MHPA to the East
- Topography – Site rises from 170 to 355 AMSL
- Steel slopes on East, West, and South
- Moody Canyon on North
- Geology – Fault line and San Ysidro landslide
- Privately – owned land on South and West



# SITE CONSTRAINTS





# Draft General Development Plan

## BEYER COMMUNITY PARK

# PARK AMENITIES

## DRAFT GENERAL DEVELOPMENT PLAN



# COMMUNITY PARKING FEEDBACK

FEBRUARY 12, 2018

- Alternatives to provide additional parking on site have been analyzed and the proposed design will exceed the parking standards for the park
- Per the Park Design Standards 66 spaces are required
- The new design includes a total of 85 parking spaces including 15 along Enright Drive
- The east side of Enright Drive will be improved with a curb and sidewalk and enhanced landscaping and fencing
- A second entrance is included off Delaney Drive to reduce traffic on Enright Drive
- Traffic analysis indicates that the traffic generation in the area is primarily M-F. The park traffic is anticipated to be highest on the weekends.



# PARK AMENITIES

## DRAFT GENERAL DEVELOPMENT PLAN PARKING AND VEHICULAR CIRCULATION

### Parking

**Total Spaces Required** 66

Soccer Field (2 ac) —30

Parkland (6.5 ac) —33

**Total Spaces Provided** 85

Standard Stalls —66

Accessible Stalls —4

Street Parking —15



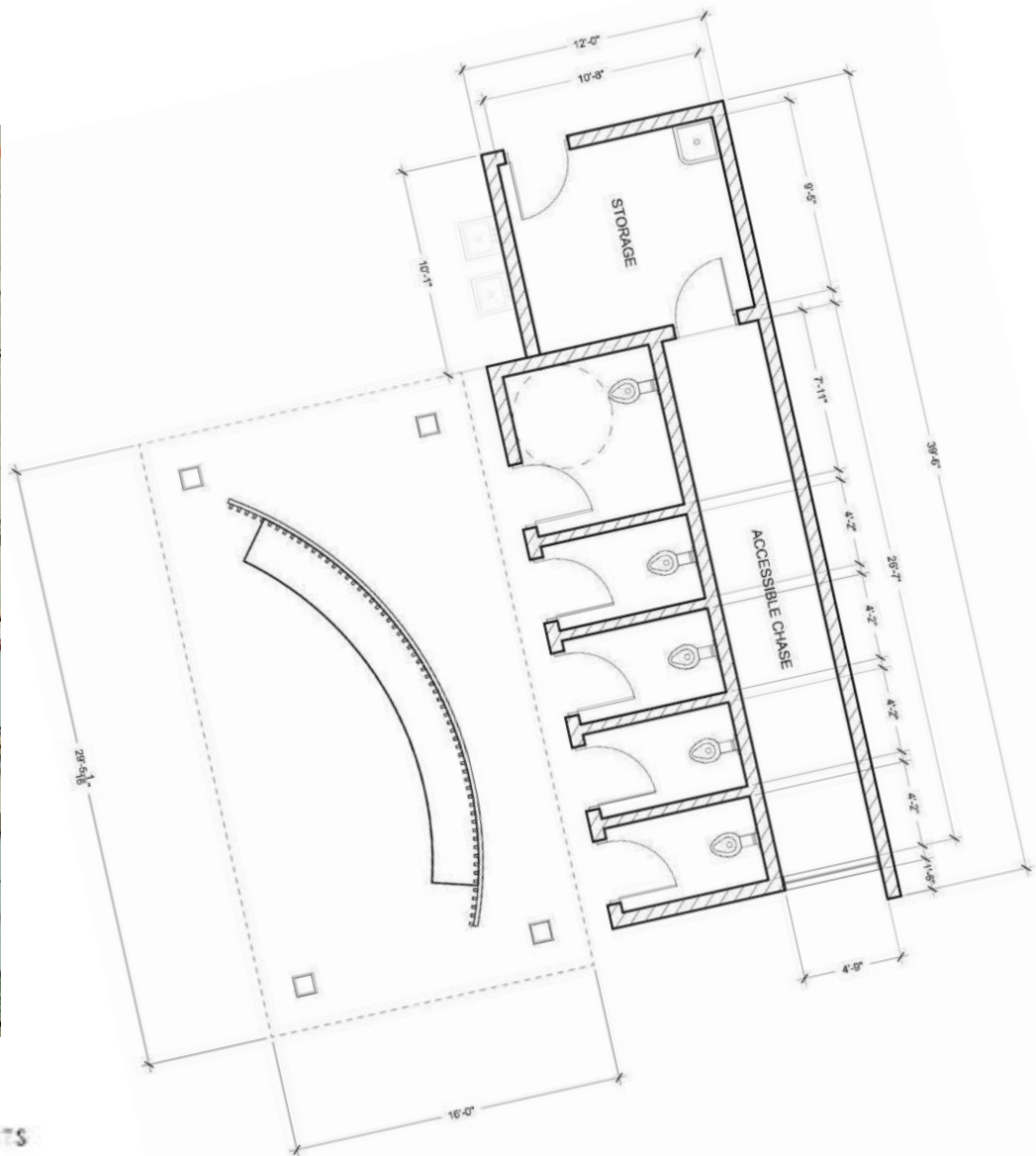
# PARK AMENITIES

## STRUCTURES



## COMFORT STATION

## COMFORT STATION



# PARK AMENITIES

## COMFORT STATION



FRONT ELEVATION



SIDE ELEVATION



REAR ELEVATION



SIDE ELEVATION



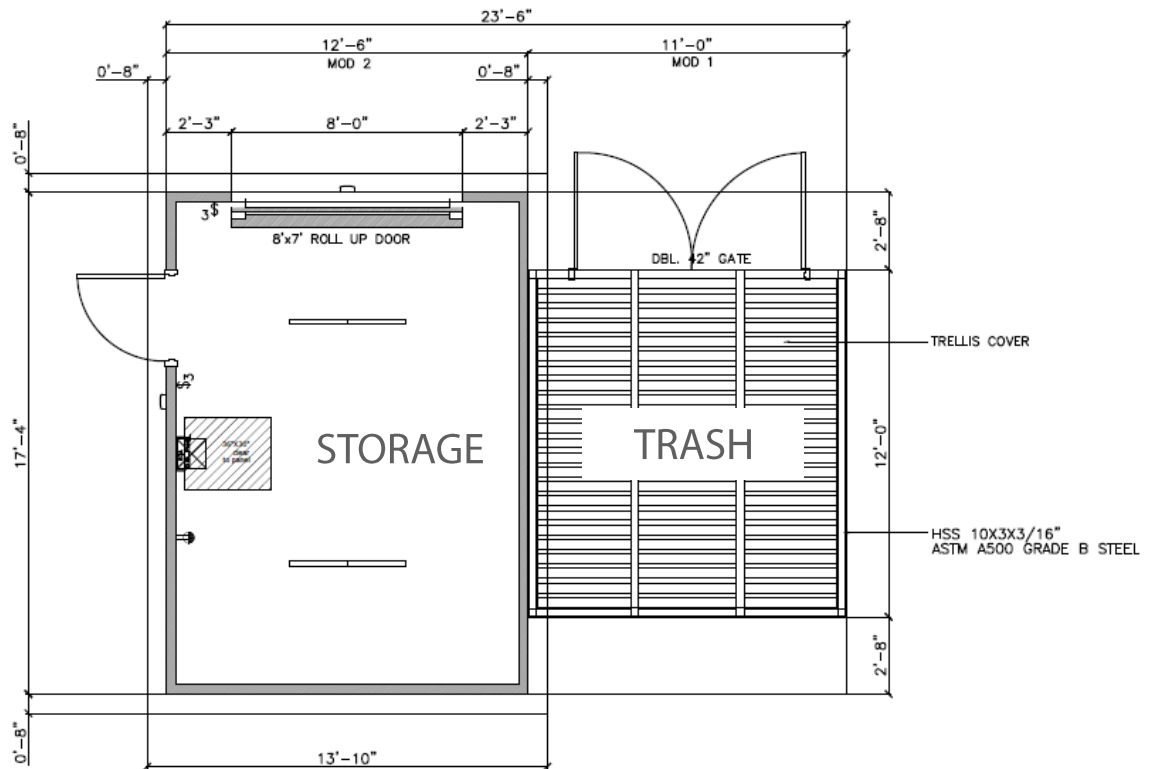
ROESLING NAKAMURA TERADA ARCHITECTS

BEYER PARK RESTROOM ELEVATION CONCEPT STUDY

2/7/18

# PARK AMENITIES

## STORAGE BUILDING



# PARK AMENITIES

## STORAGE BUILDING



FRONT ELEVATION



SIDE ELEVATION



SIDE ELEVATION



# PARK AMENITIES

## PICNIC STRUCTURES



# PARK PRECENDENT

## PICNIC STRUCTURES



BALANCING ARTISTIC EXPRESSION IN DESIGN WITH ENVIRONMENTAL SENSITIVITY



# PARK AMENITIES

MULTI-USE TURF FIELD WITH SPORTS LIGHTING



# PARK PRECENDENT

MULTI-USE TURF FIELD WITH SPORTS LIGHTING



Soccer fields – 3 youth fields and 1 adult field overlay



Sports lighting



# PARK AMENITIES

## SKATE PARK



# PARK PRECEDENT

SKATE PARK



Skate Park

# PARK AMENITIES

SPORTS COURTS and EXERCISE STATION





Half court basketball



# PARK PRECEDENT

## FITNESS NODES



# PARK AMENITIES

## CHILDREN'S PLAY



# PARK PRECEDENT

## CHILDREN'S PLAY



# PARK PRECENDENT

CHILDREN'S PLAY





Play arches



Play surfacing - sand



Play surfacing - resilient



# PARK PRECENDENT

PLAY ON SLOPE



# PARK PRECENDENT

PLAY ON SLOPE



# PARK PRECENDENT

## NATURAL SEATING AREA



# PARK AMENITIES

AMPHITHEATER / GATHERING SPACE / GEOLOGY PLAZA



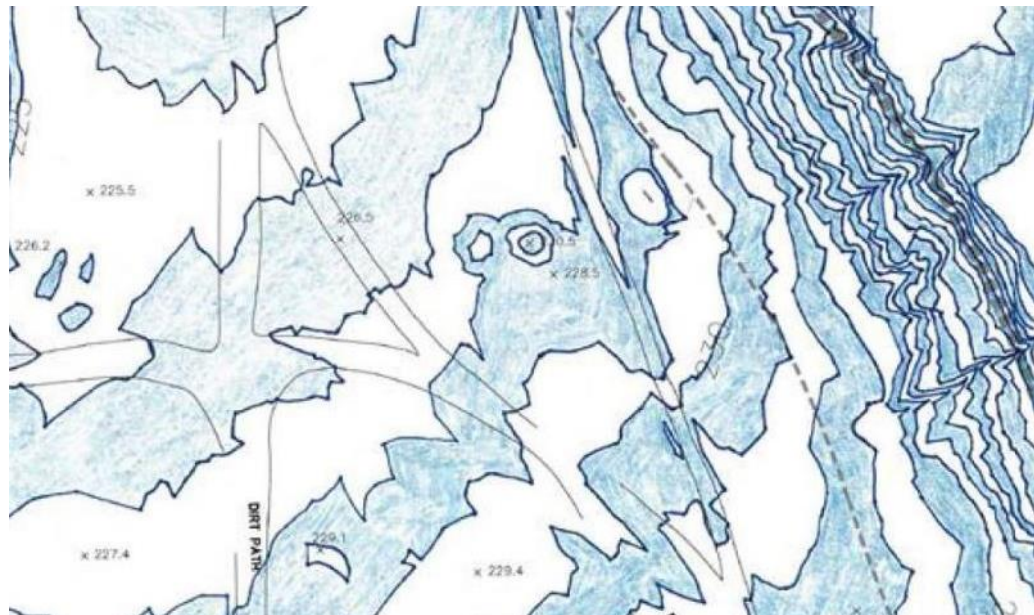
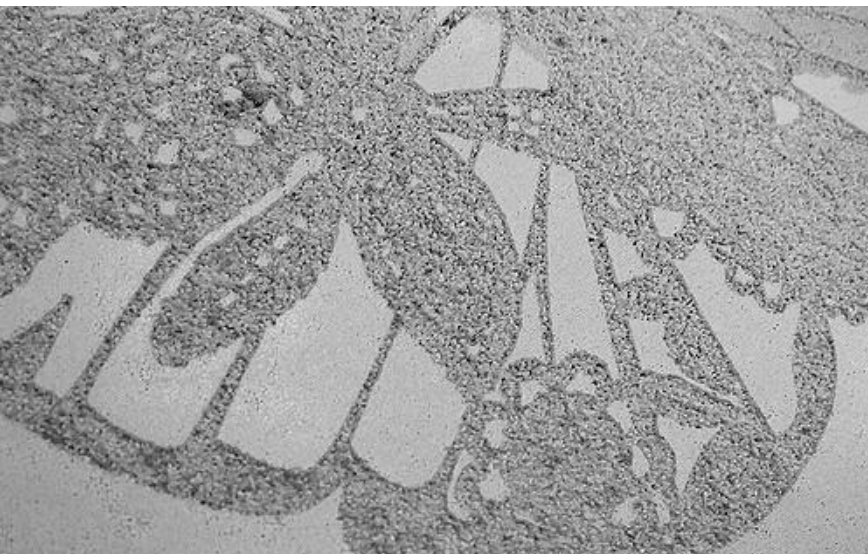
# PARK PRECENDENT

AMPHITHEATER / GATHERING SPACE



# DRAFT GENERAL DEVELOPMENT PLAN

GEOLOGY PLAZA



# PARK AMENITIES

## ENTRY MONUMENT SIGNAGE



# DRAFT GENERAL DEVELOPMENT PLAN

## ENTRY MONUMENT SIGNAGE



# PARK AMENITIES

## DOG PARK





Dog Park



Haws pet fountain



Pet station



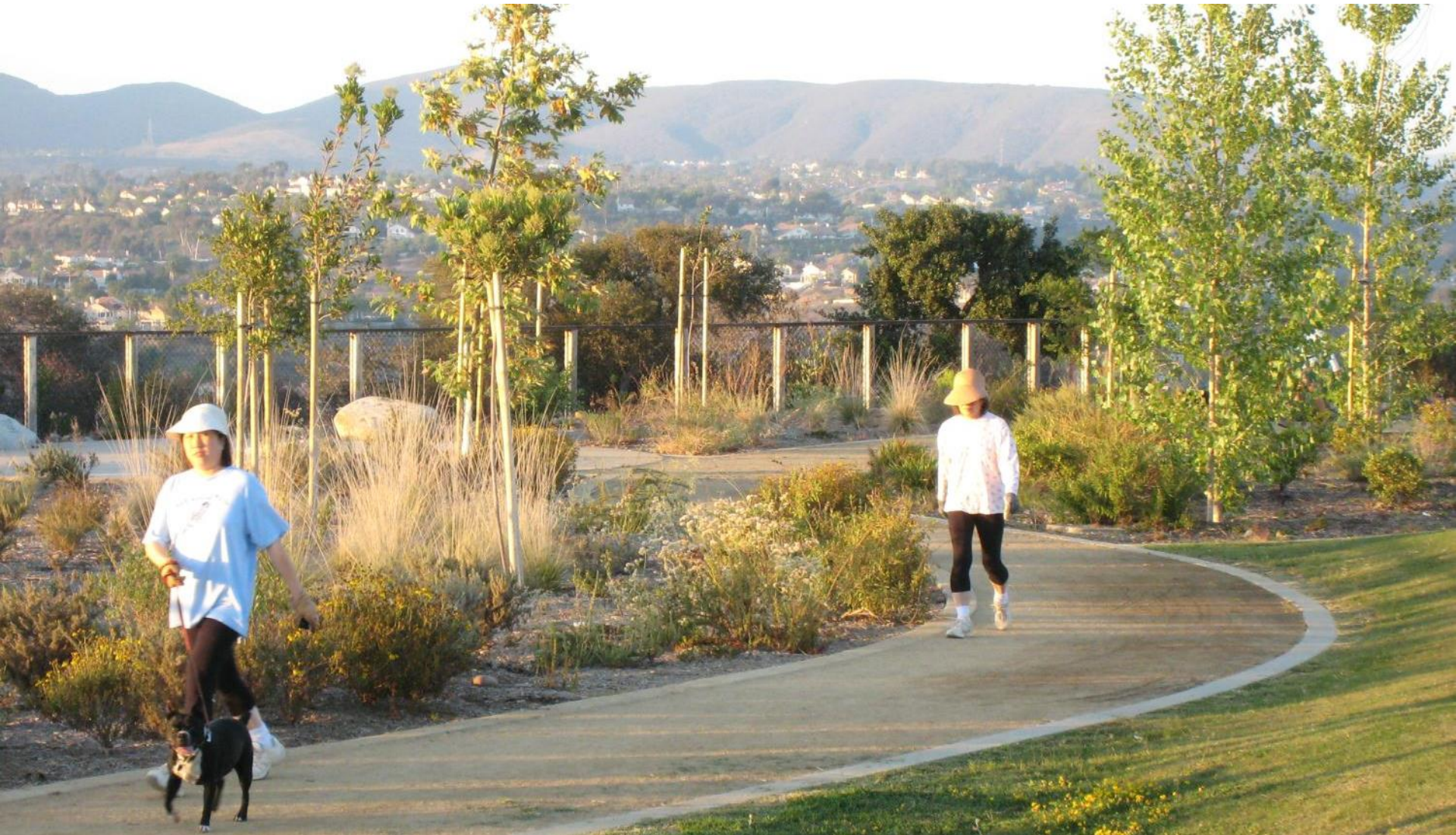
# PARK AMENITIES

## LOOP TRAIL AND TRAIL CONNECTIONS



# PARK PRECENDENT

## PERIMETER TRAIL



# PARK PRECEDENT

## TRAILS



# PARK PRECEDENT

## STORMWATER INTEGRATION





White concrete picnic tables





Concrete Trash and Recycle  
Receptacles with Hood



Custom concrete seating nodes



# NEXT STEPS

## CITY GDP PROCESS

- San Ysidro/Otay Mesa Recreation Council
  - Informational Meeting Feb 2017
  - Park Alternatives September 2017
  - Draft GDP Feb 12, 2018
- CEQA Processing
  - Draft MND Document Winter 2018
  - Final MND Document Spring 2019
- Park and Recreation Board Approval
  - **Final GDP Spring/Summer 2019**





# THANK YOU

## BEYER COMMUNITY PARK

