

# Mobility Corridor Concepts: Mira Mesa Community Plan Update

Planning Department

March 16, 2020

5:30 p.m. to 6:50 p.m. – Mira Mesa Community Plan Update Advisory Committee – **Recorded Presentation**





**Alex Frost**  
Project Manager  
City of San Diego  
Planning Department



**Claudia Brizuela**  
Associate Traffic Engineer  
City of San Diego Planning  
Department



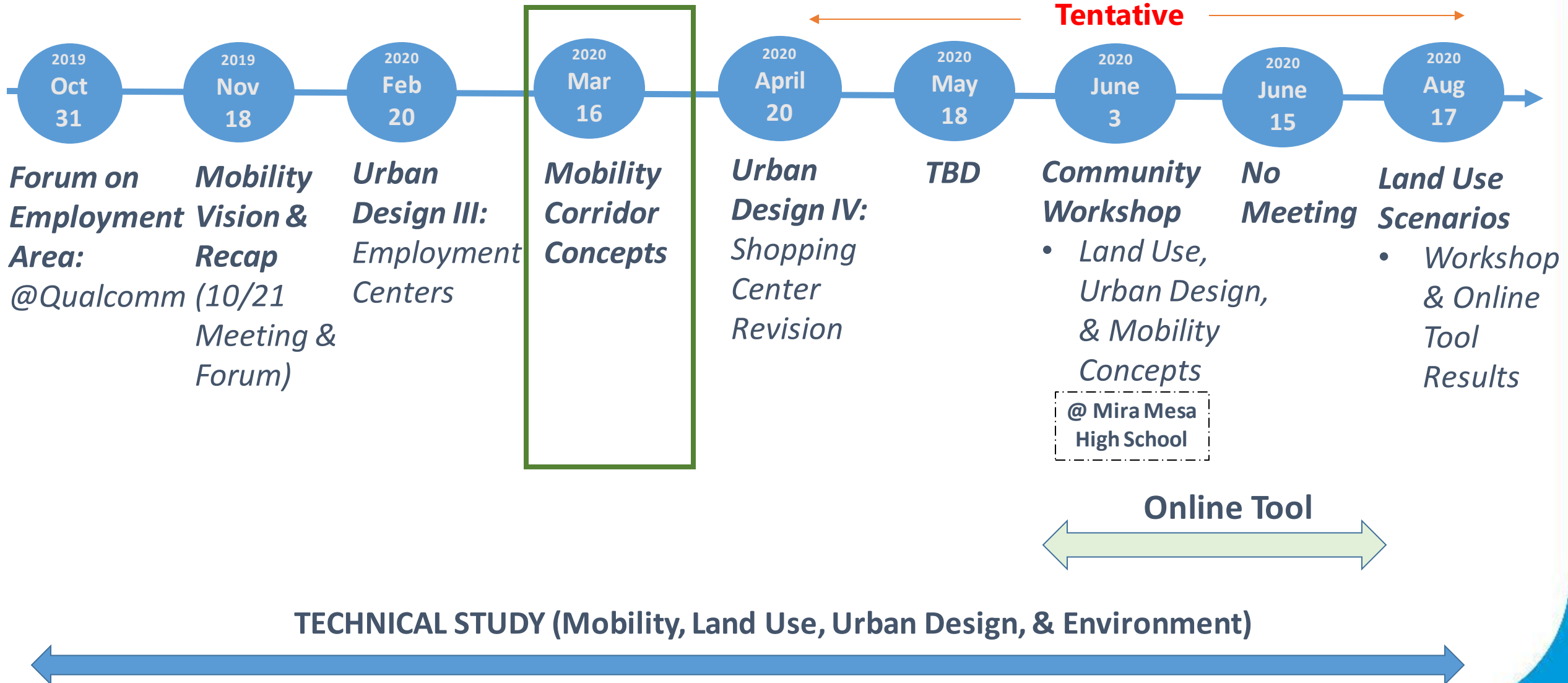
**Amy Jackson**  
Project Engineer  
Kimley-Horn Associates

- 1. Mira Mesa Community Plan Update Schedule**
- 2. Recap - Miramar Gateway Urban Design Concepts**
- 3. Mobility Corridor Concepts**

**Item 2 postponed**



# Mira Mesa Plan Update Schedule



# MIRAMAR GATEWAY

# BLACK MOUNTAIN RD – ALL OPTIONS

Discussion  
postponed

## SCENARIO 1: **BUSINESS & INDUSTRIAL**

~1,144 units  
~3.6 million SF of office  
~85,000 SF of retail  
~46 acres of pedestrian space  
~33 acres of open space



## SCENARIO 2: **EMPLOYMENT VILLAGE**

~1,892 units  
~535,000 SF of office  
~40,000 SF of retail  
~22 acres of pedestrian space  
~13 acres of open space



## SCENARIO 3: **FLEX VILLAGE**

Market to Determine  
(TBD with KMA input)







# Mobility Corridor Concepts

Kimley»Horn

The City of  
**SAN  
DIEGO**



# Outline

Feedback to Community Concerns

Review of Approach to Mobility

Recommended Networks

Proposed Corridors and Intersections

Next Steps



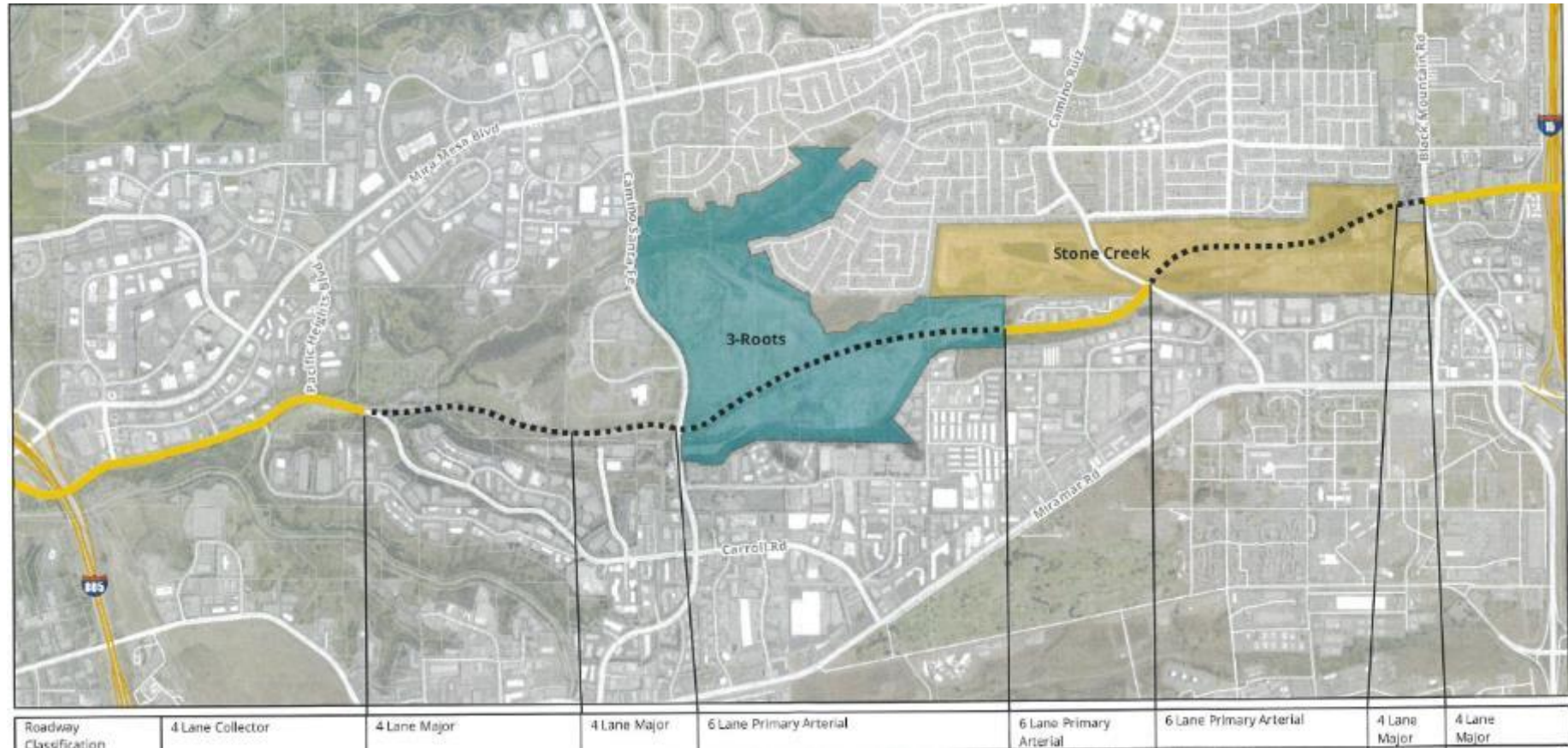
# What We've Heard

- Carroll Canyon Road
- Need to invest in transit first
- Miramar Road
- Pedestrian safety around MM Town Center
- Improve access across I-15
- Rails to Trails



# Carroll Canyon Road

- Public Works Dept project
- Alignment Study for City segment
- Coordination:
  - MTS – Elevate SD 2020
  - SANDAG –April 2020 Presentation to Board
- Center Median BRT



# Transit First

- Elevate SD 2020
- How does BRT/Flex Lane compare to trolley?
- Transit along Miramar Road





# Miramar Road

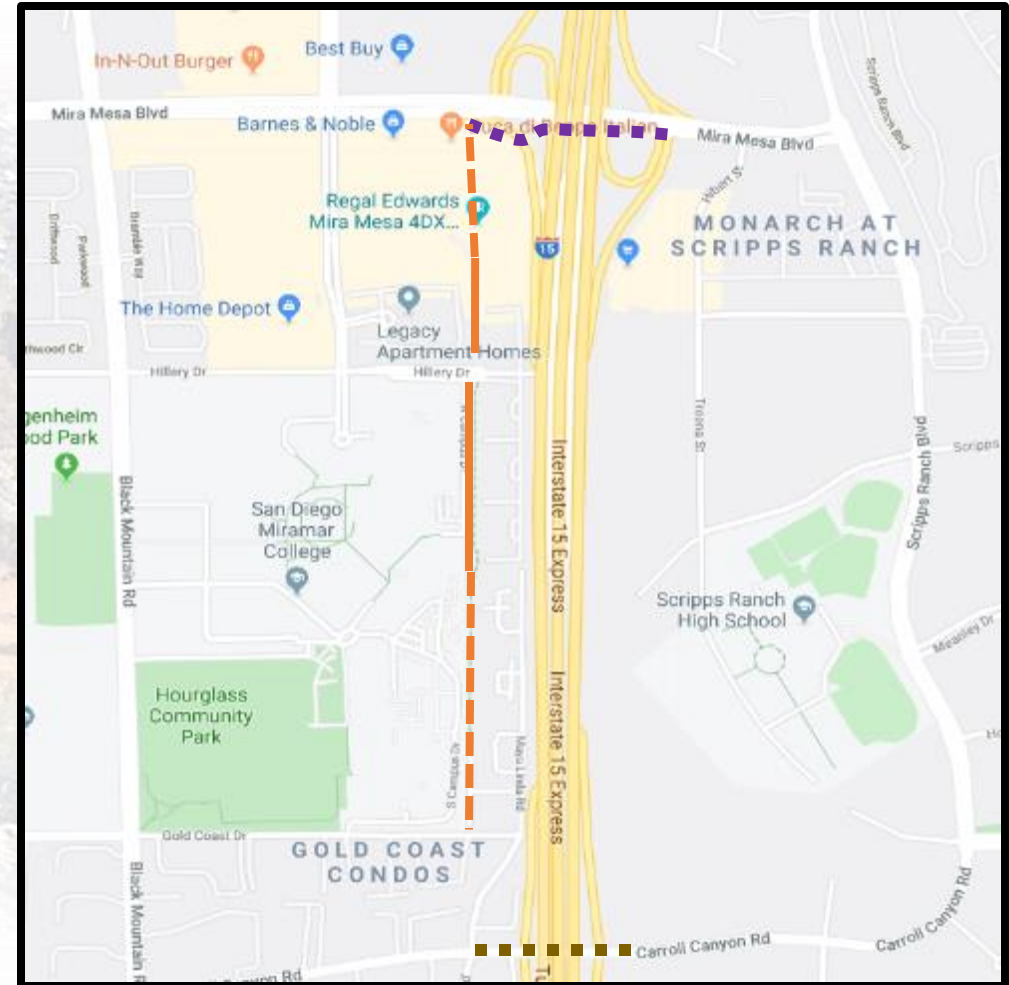
- Transit down the middle
- Remove center lane
- Consider semi truck traffic
- Security around MCAS Miramar (Nothing elevated near base)
- City has taken all input into consideration
  - Shared with MCAS Miramar – received no objections



# Increase Access to Scripps Ranch

Update:

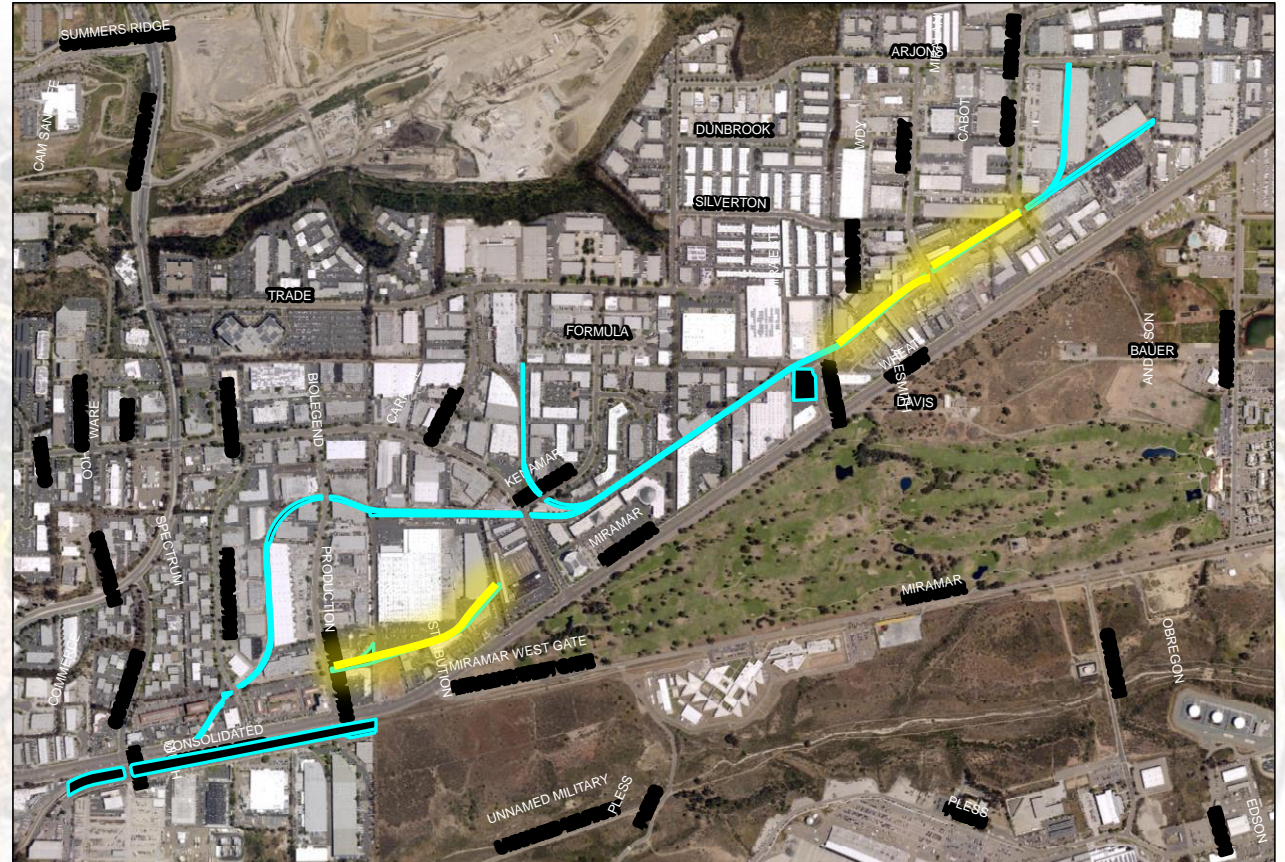
- Caltrans Coordination
- Pedestrian activated crossing
- Class I Multi-Use Path
- Structure across I-15





# Rails to Trails

- “Rails to Trails”
- New Orleans, LA Case Study





Bus Operations & Service  
ElevateSD 2020



Transportation &  
Storm Water

Traffic Operations: Traffic control,  
Parking, Bicycle & Pedestrian facilities



Regional Transportation Improvements  
From Now to 2050



Development  
Services

Development Projects, Temporary  
Traffic Control, Permitting



# Coordination



Freeway & Highway Operations



**Marine Corps Air Station Miramar**





# Land Use and Mobility

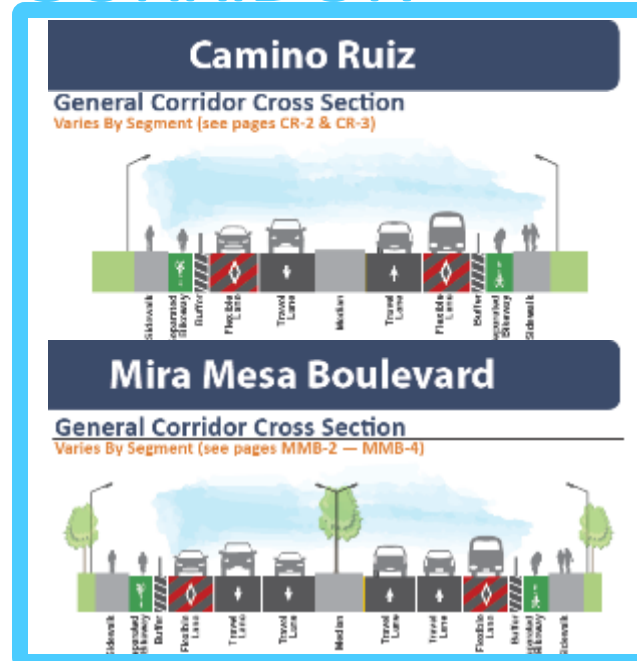


# Process Flow

## NETWORK



## CORRIDOR

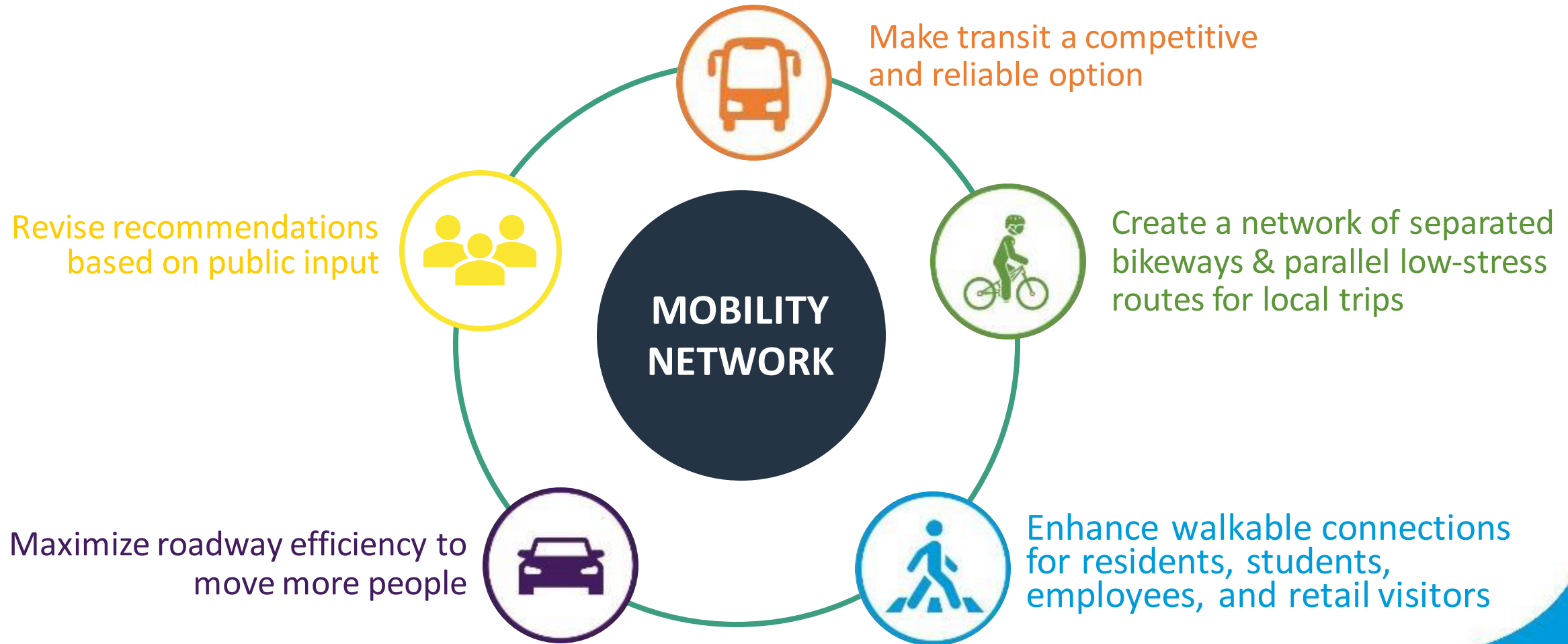


## INTERSECTION

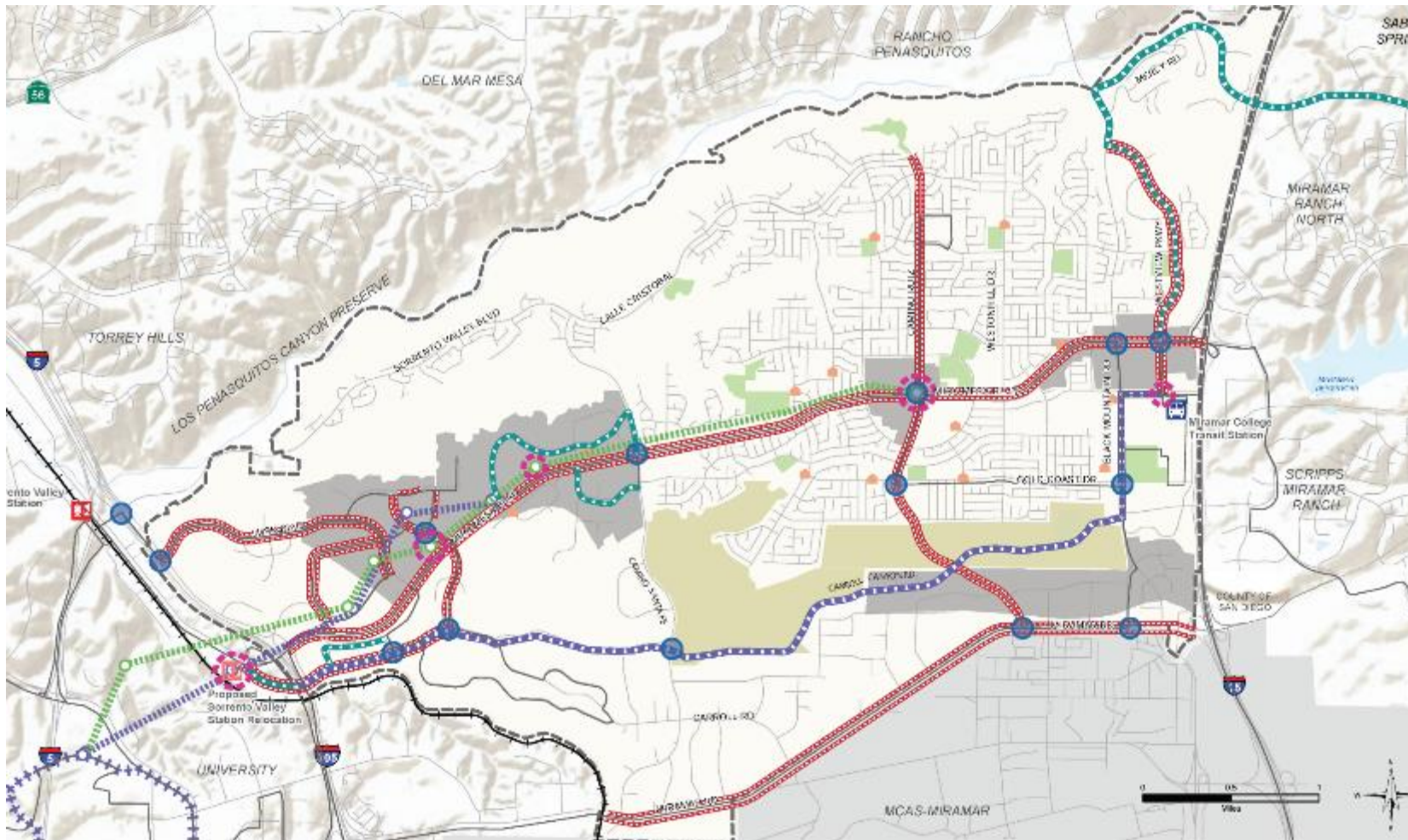




# Primary Strategies for Recommended Networks



# Proposed Transit Network



## LEGEND

- City and County Parks
- Focus Areas
- Schools
- Future Development

## Existing Transit

- Existing Transit Route
- Light Rail / Commuter Rail

## Planned Improvements

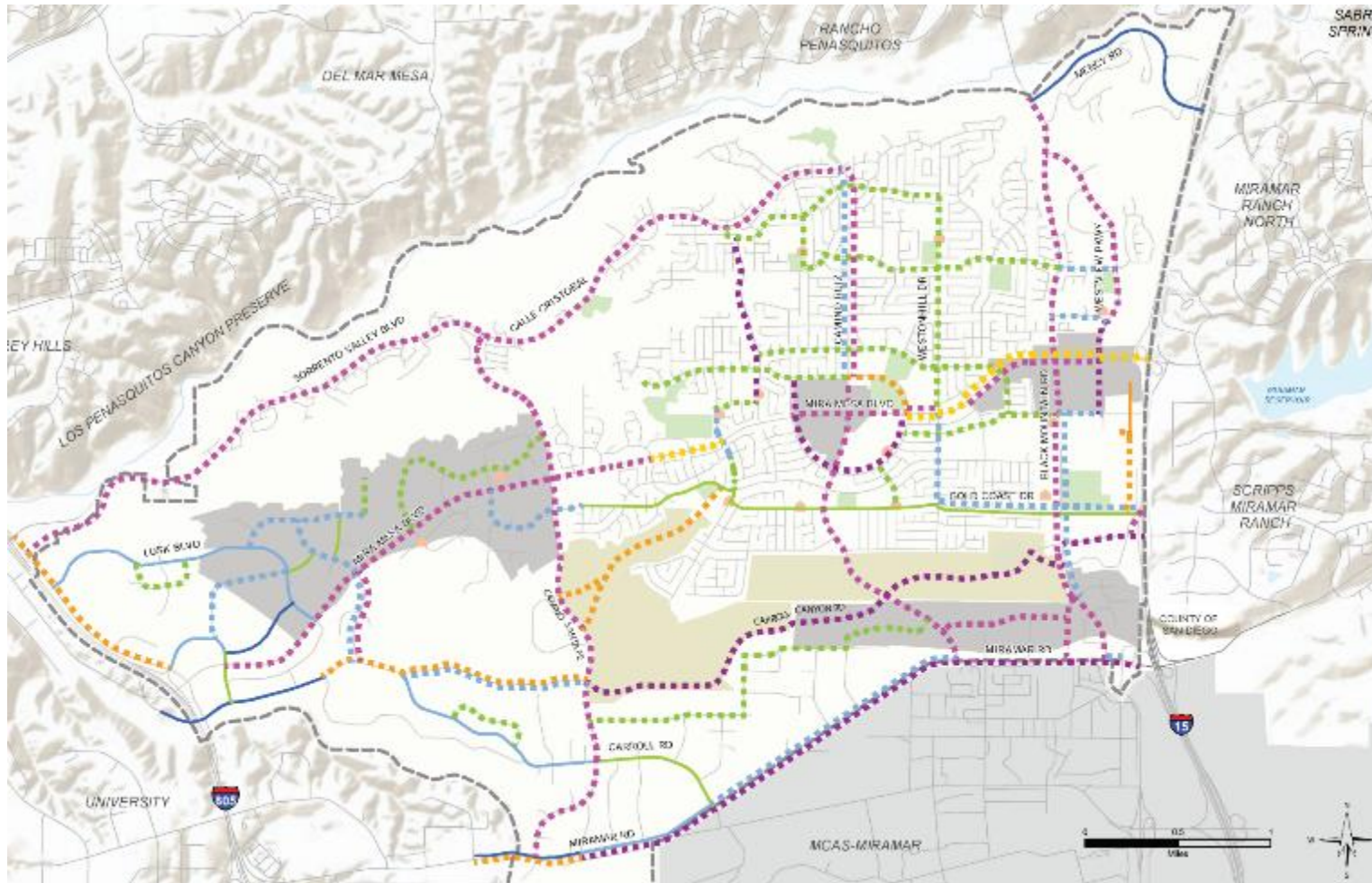
- New Rapid Transit
- New Aerial Skyway Alignment / New Aerial Skyway Stop
- Mid-Coast Trolley Extension

## Recommended Improvements

- New Transit Line / Modification
- Flexible Lane
- Modified Aerial Skyway Alignment / Additional Aerial Skyway Stop
- Transit Signal Priority
- Mobility Hub Location



# Proposed Bike Network



## LEGEND

- Mira Mesa Community Plan Boundary
- City and County Parks
- Focus Areas
- Schools

### Existing Bicycle Facilities to Remain

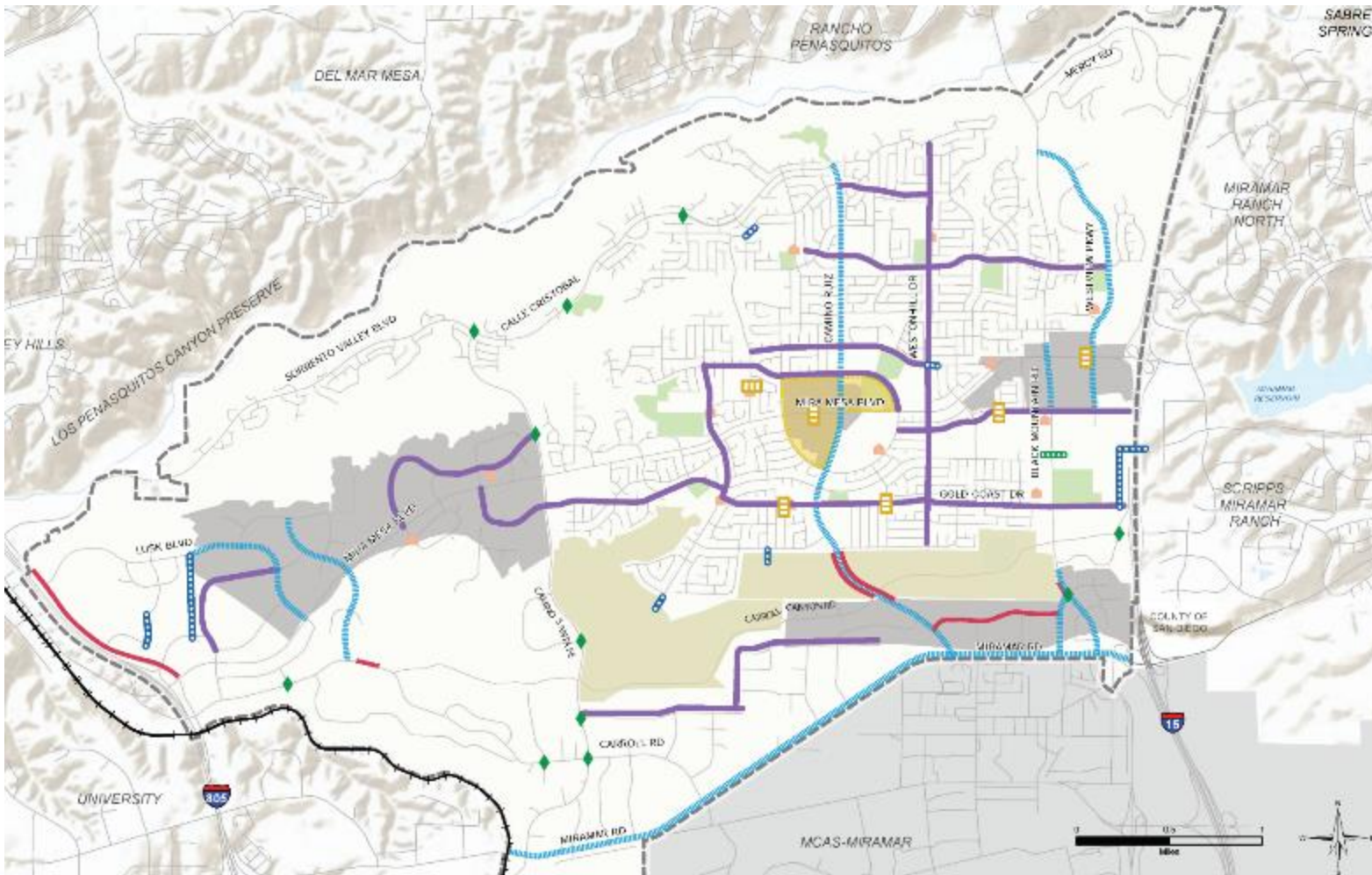
- Buffered Bicycle Lane
- Standard Bicycle Lane
- Bicycle Route

### Proposed Bicycle Facilities

- Bicycle Trail / Multi-Use Path
- Shared Use Path (one-way)
- Buffered Bicycle Lane
- Standard Bicycle Lane
- Bicycle Boulevard\*
- Separated Bikeway / Cycle Track (two-way)
- Separated Bikeway / Cycle Track (one-way)

\* Proposed bicycle boulevards shall include vehicle volume and speed management strategies and designs where necessary (speeds > 20 MPH or volumes > 3,000 ADT).

# Proposed Pedestrian Network



## LEGEND

- Mira Mesa Community Plan Boundary
- Schools
- Parks
- Focus Areas
- Future Development

## Recommended Improvements

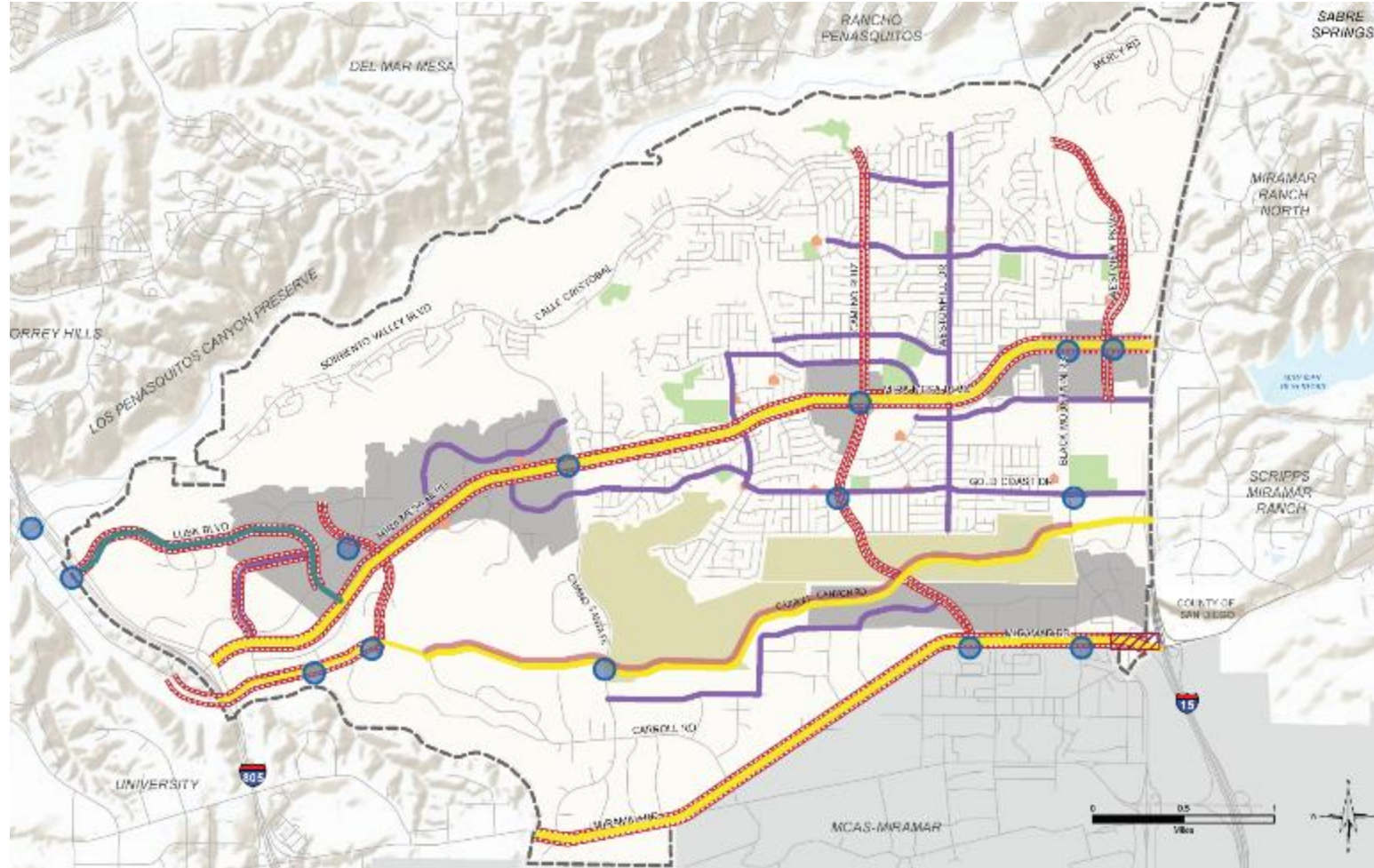
- Pedestrian Path/Bridge
- Enhanced Ped Crossing
- Construct Missing/Asphalt Sidewalk
- Traffic Calming Enhancements
- Enhanced Pedestrian Environment
- Pedestrian-Oriented Area

## Planned Improvements

- Pedestrian Path/Bridge
- Mayor's Vision Zero Intersection Improvement List



# Proposed Vehicle Modifications



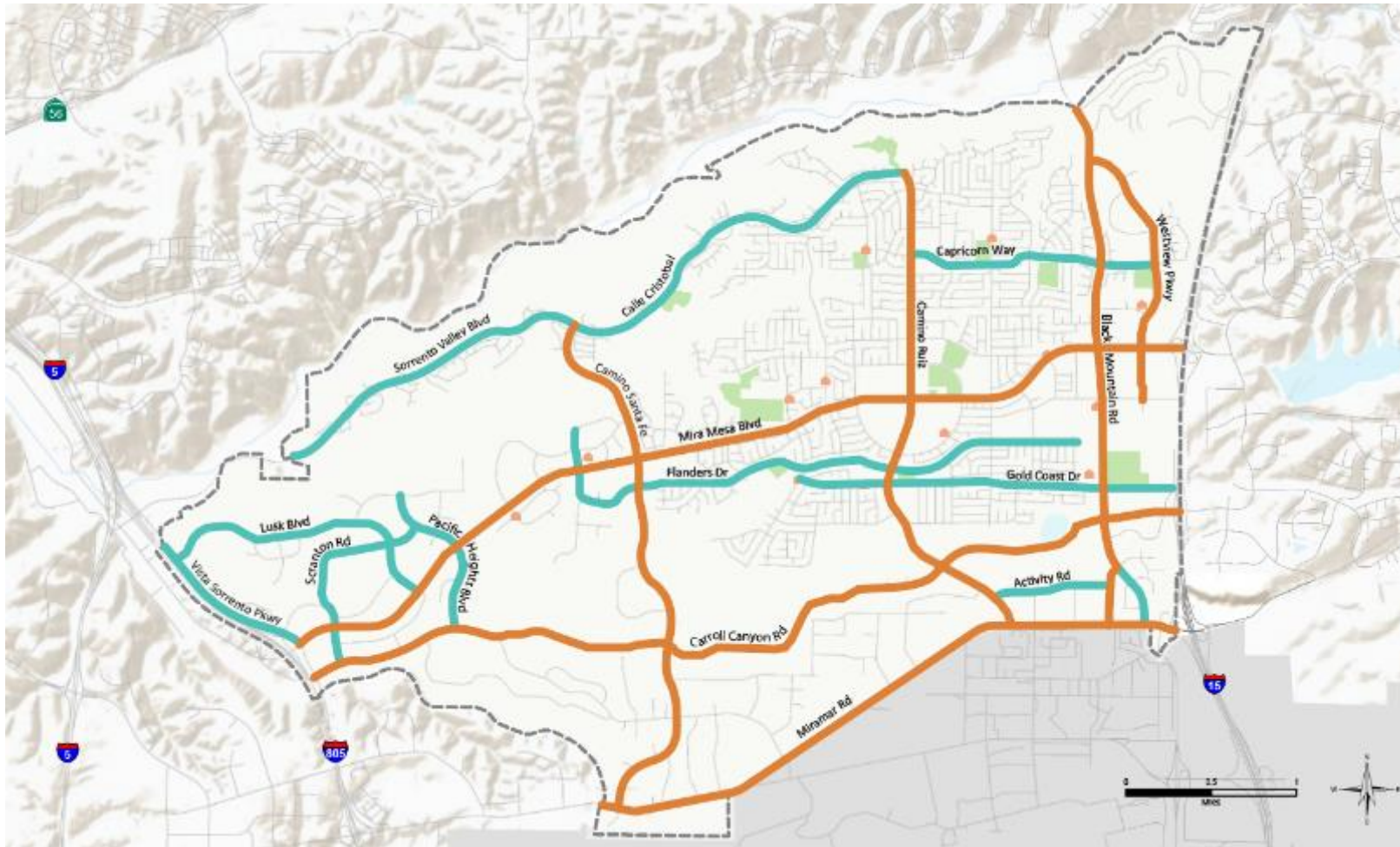
## LEGEND

- Mira Mesa Community Plan Boundary
- City and County Parks
- Focus Areas
- Schools
- Future Development

## Vehicle Recommendations

- SMART Corridor
- Adaptive Traffic Signal
- Flexible Lane
- Freeway Congestion Improvements
- Proposed Roadway
- Traffic Calming Enhancements
- Transit Signal Priority

# Focus Corridors



## LEGEND

Mira Mesa Community Plan Boundary

City and County Parks

Schools

## Focus Corridors

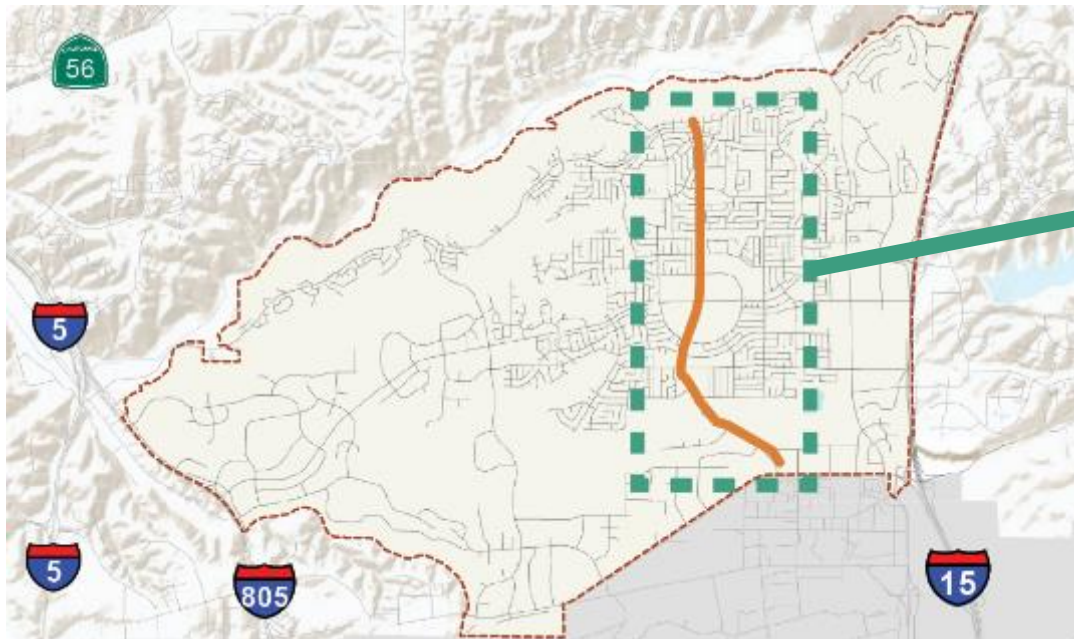
Primary Focus Corridors

Secondary Focus Corridors



# Primary Focus Corridors

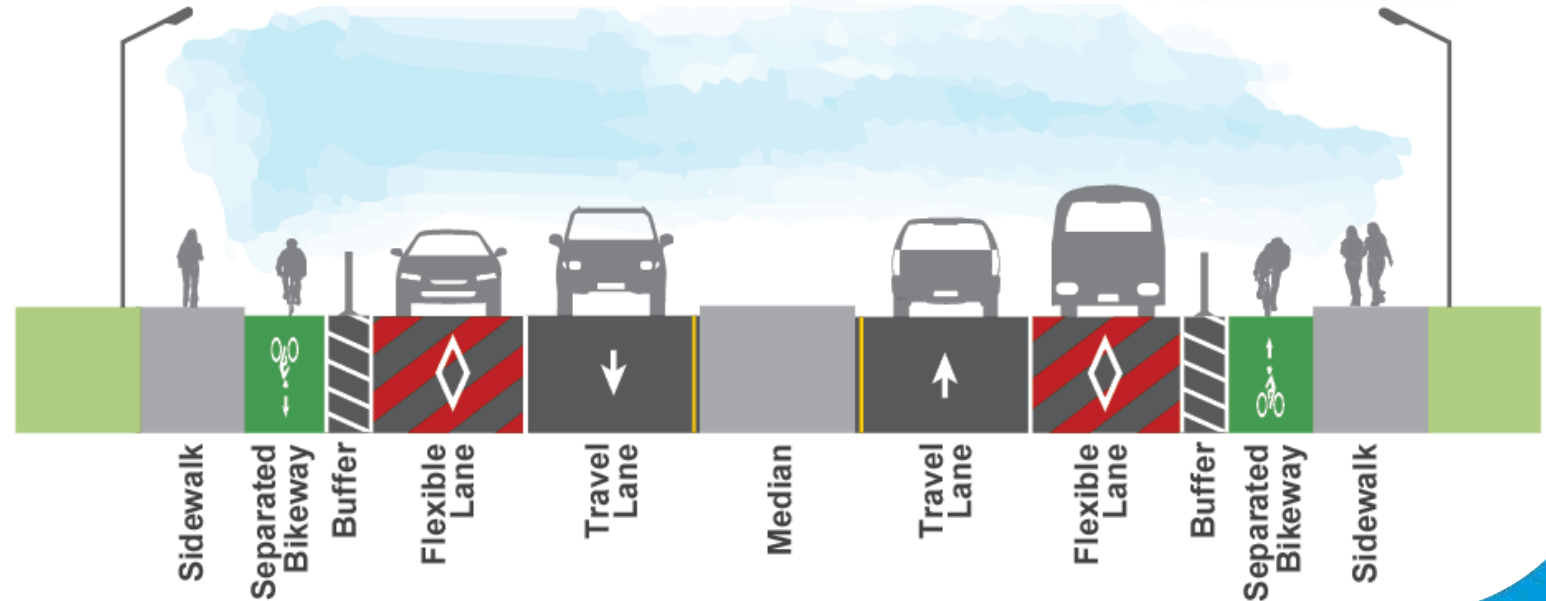
## Camino Ruiz



# Primary Focus Corridors

## Camino Ruiz

- Corridor-wide Improvements
  - Complete corridor
  - Separated bikeways
  - Flexible Lanes





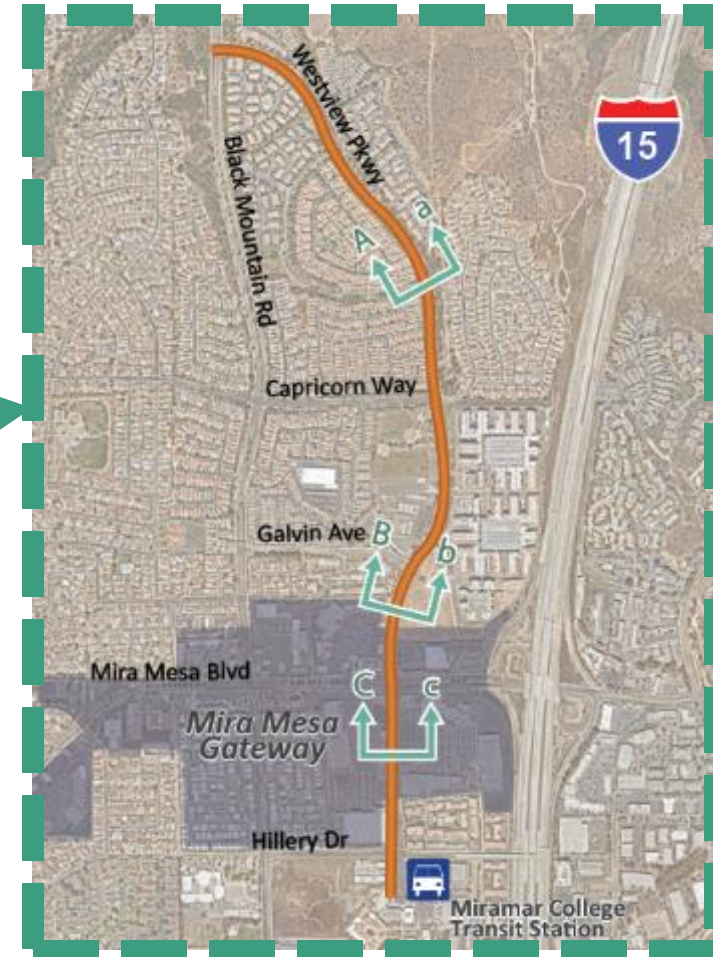
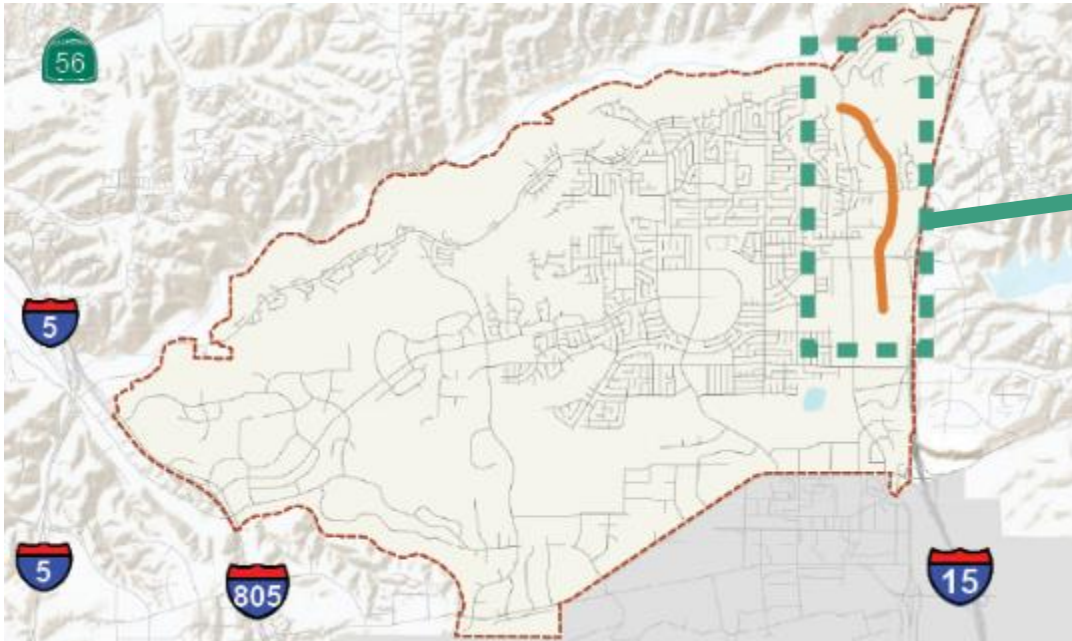
# Primary Focus Corridors – Intersection Concept

Camino Ruiz at Mira Mesa Blvd



# Primary Focus Corridors

## Westview Parkway

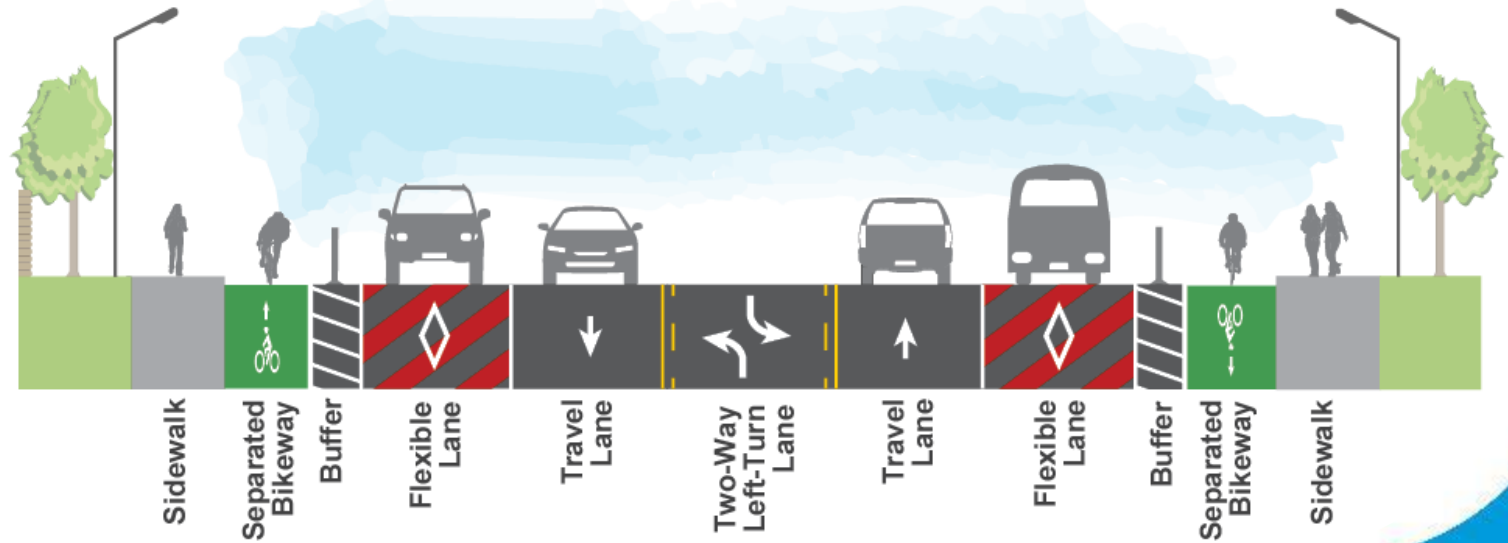




# Primary Focus Corridors

## Westview Parkway

- Corridor-wide Improvements
  - Complete corridor
  - Separated bikeways
  - Flexible Lanes



# Primary Focus Corridors – Intersection Concept

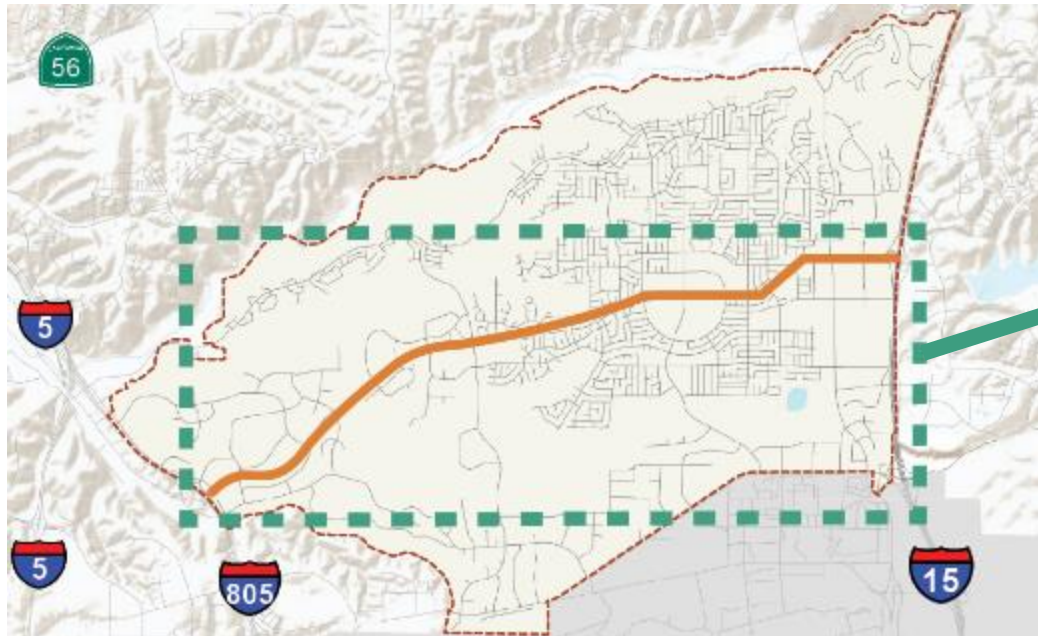
## Westview Pkwy at Mira Mesa Blvd





# Primary Focus Corridors

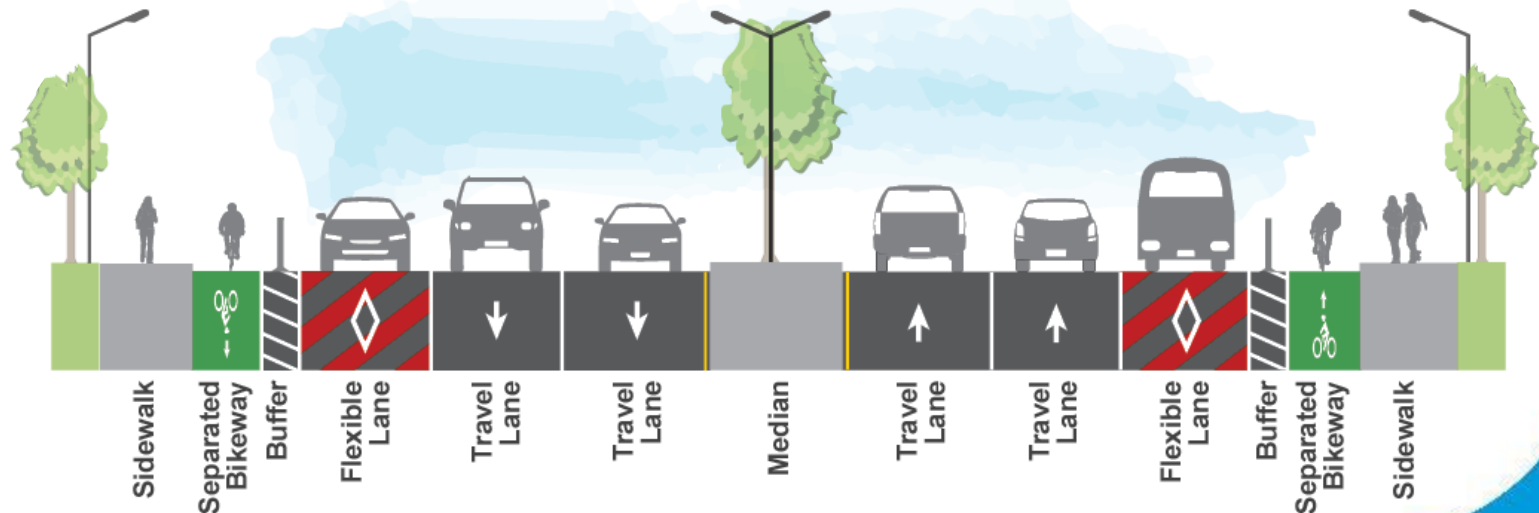
## Mira Mesa Boulevard



# Primary Focus Corridors

## Mira Mesa Boulevard

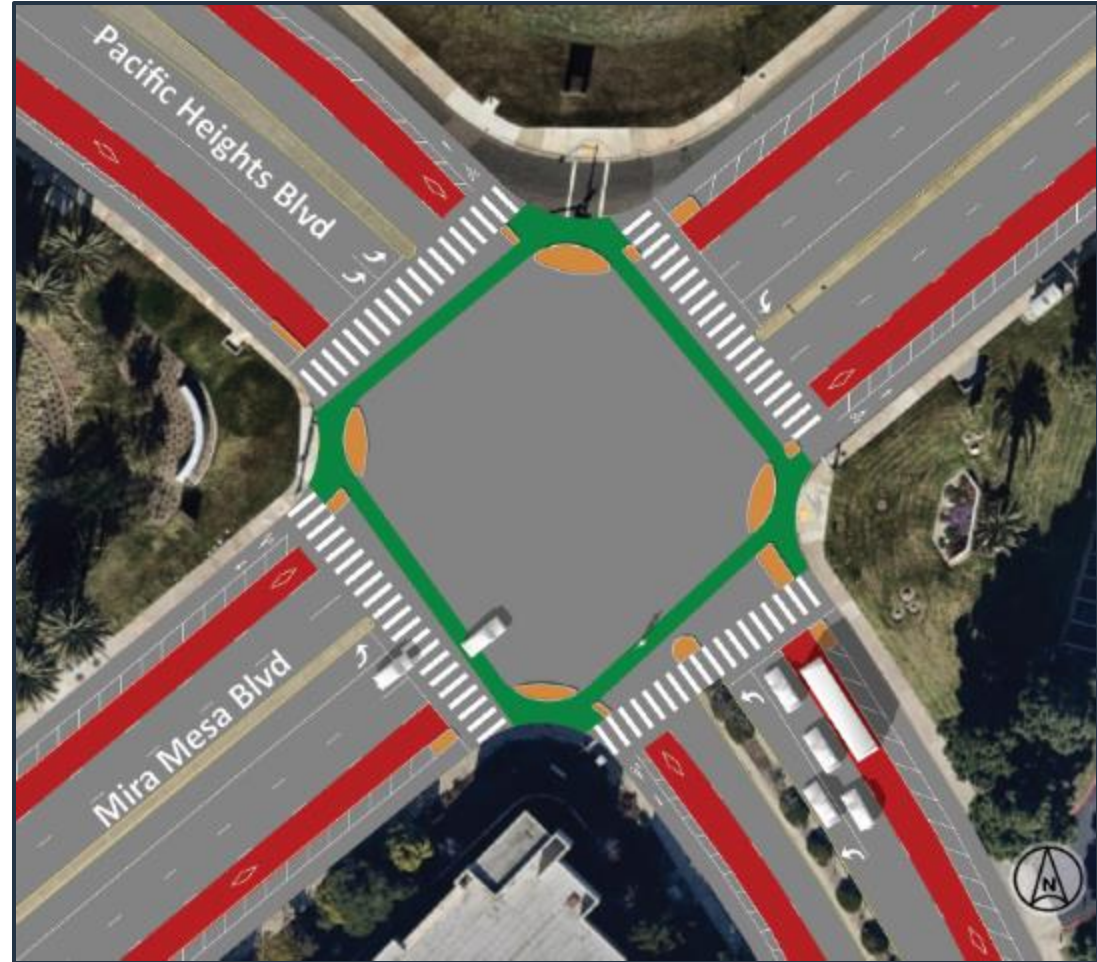
- Corridor-wide Improvements
  - Separated bikeways
  - Sustainable Mobility for Adaptable and Reliable Transportation (SMART) corridor





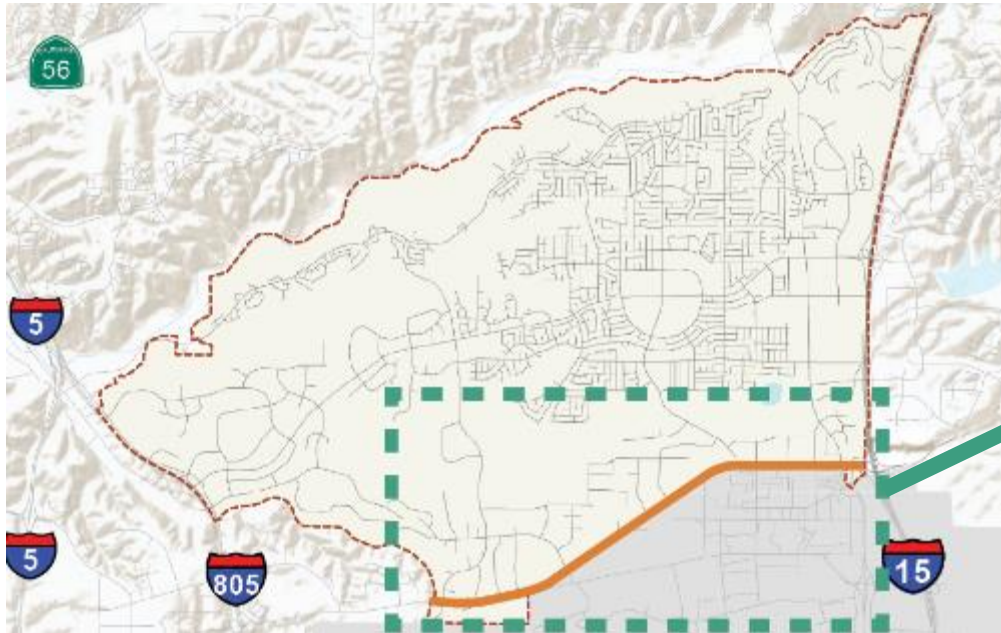
# Primary Focus Corridors – Intersection Concept

Mira Mesa Blvd at Pacific Heights Blvd



# Primary Focus Corridors

## Miramar Road

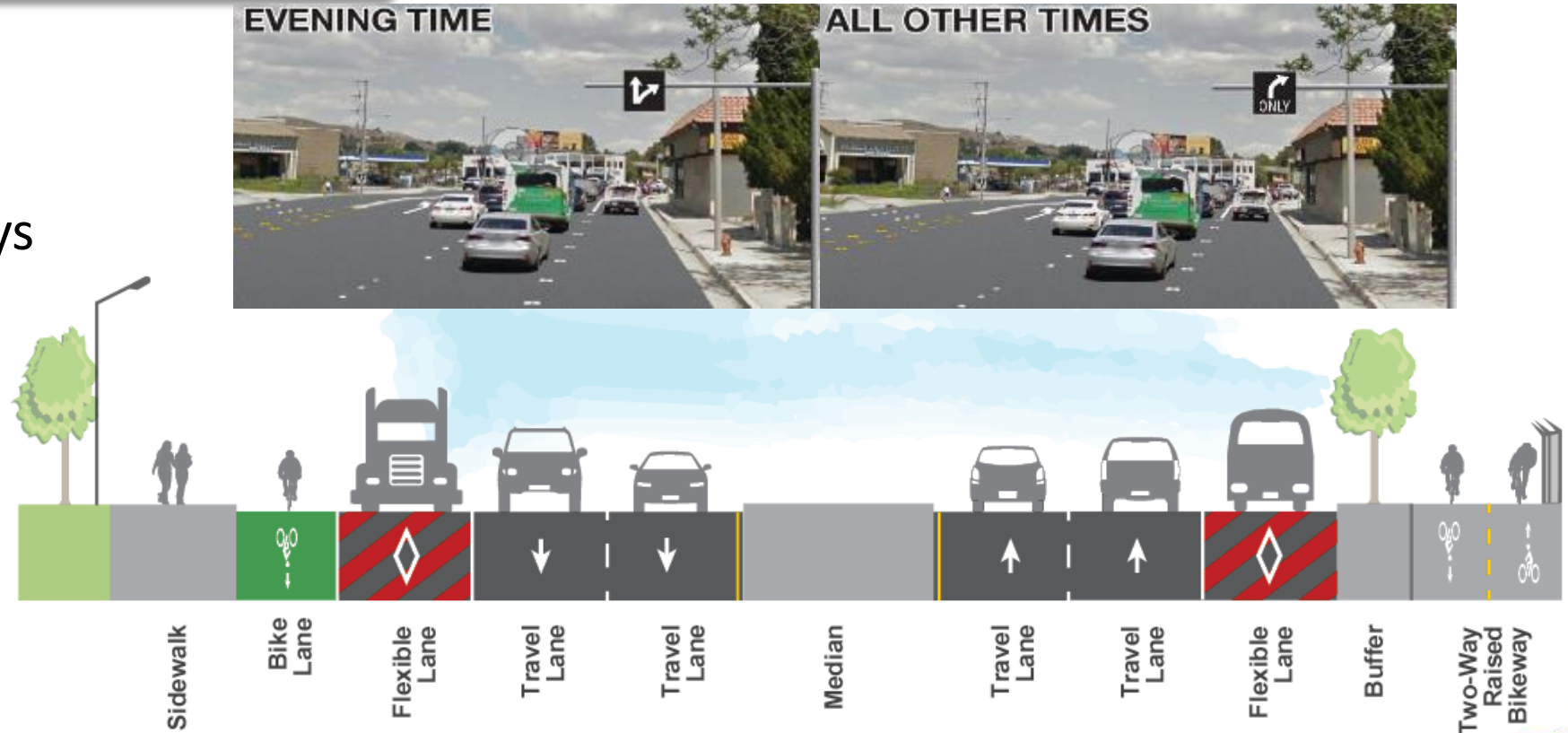




# Primary Focus Corridors

## Miramar Road

- Corridor-wide Improvements
  - Regional bikeways
  - SMART corridor
  - Dynamic lane



# Primary Focus Corridors – Intersection Concept

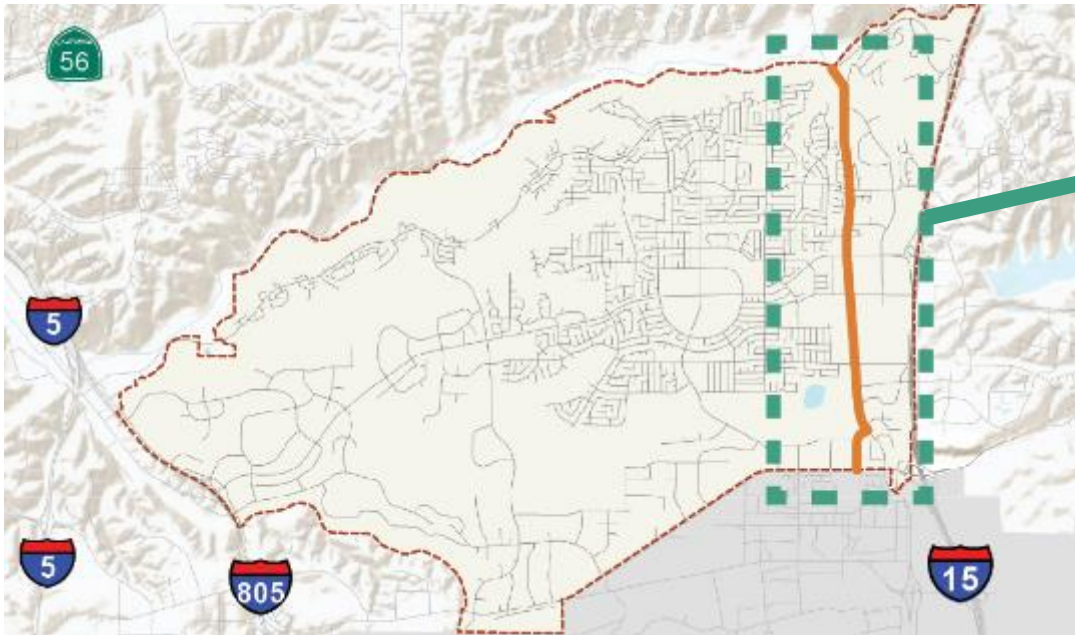
➤ Miramar Rd at Kearny Villa Dr





# Primary Focus Corridors

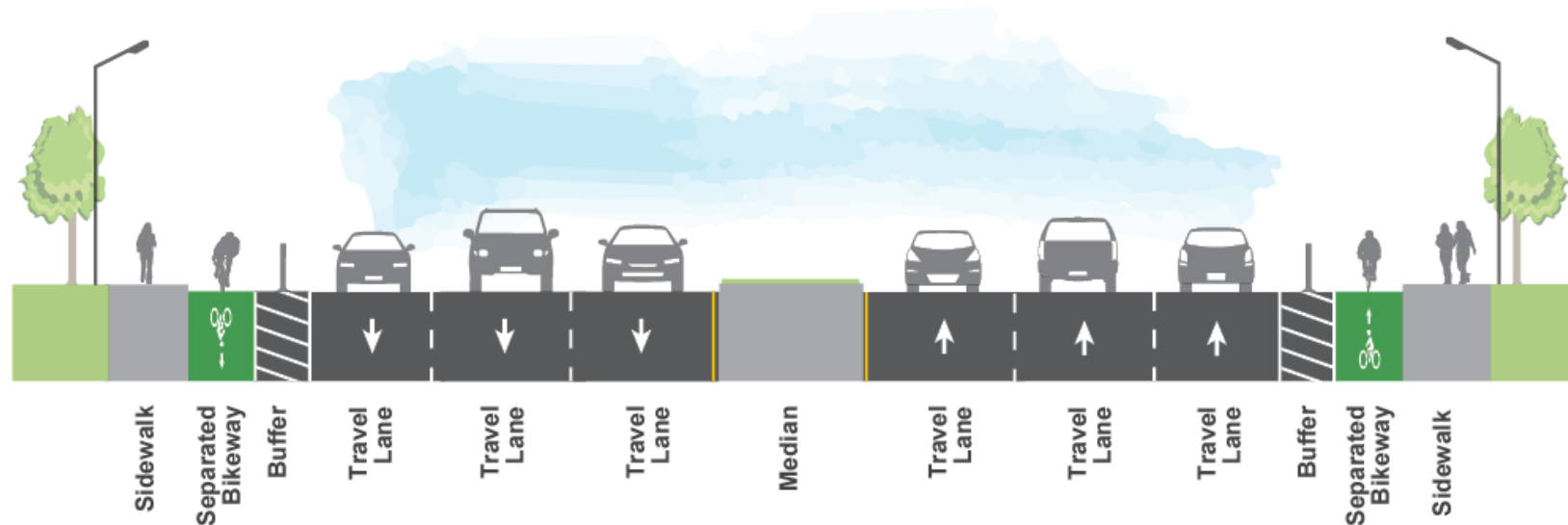
## Black Mountain Road



# Primary Focus Corridors

## Black Mountain Road

- Corridor-wide Improvements
  - Complete corridor
  - Separated bikeways





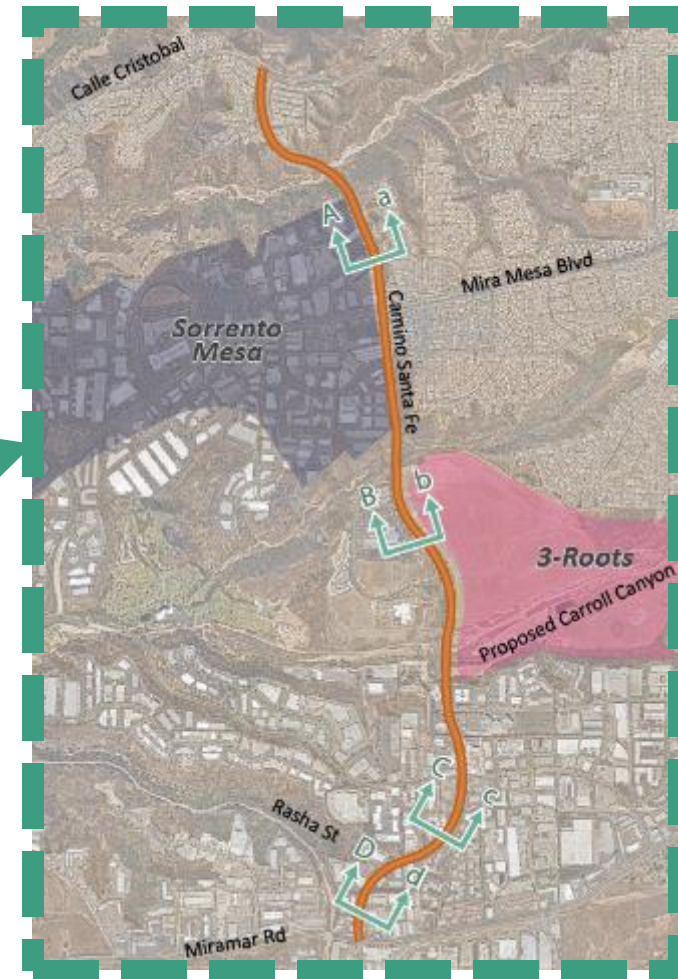
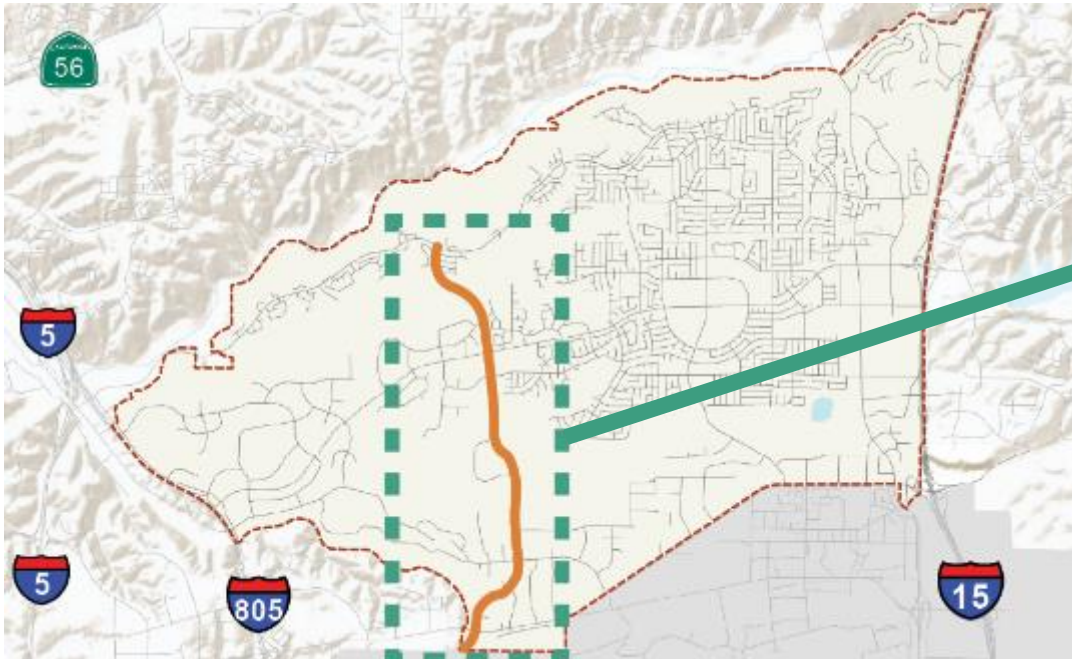
# Primary Focus Corridors – Intersection Concept

Black Mountain Rd at Mira Mesa Blvd



# Primary Focus Corridors

## Camino Santa Fe

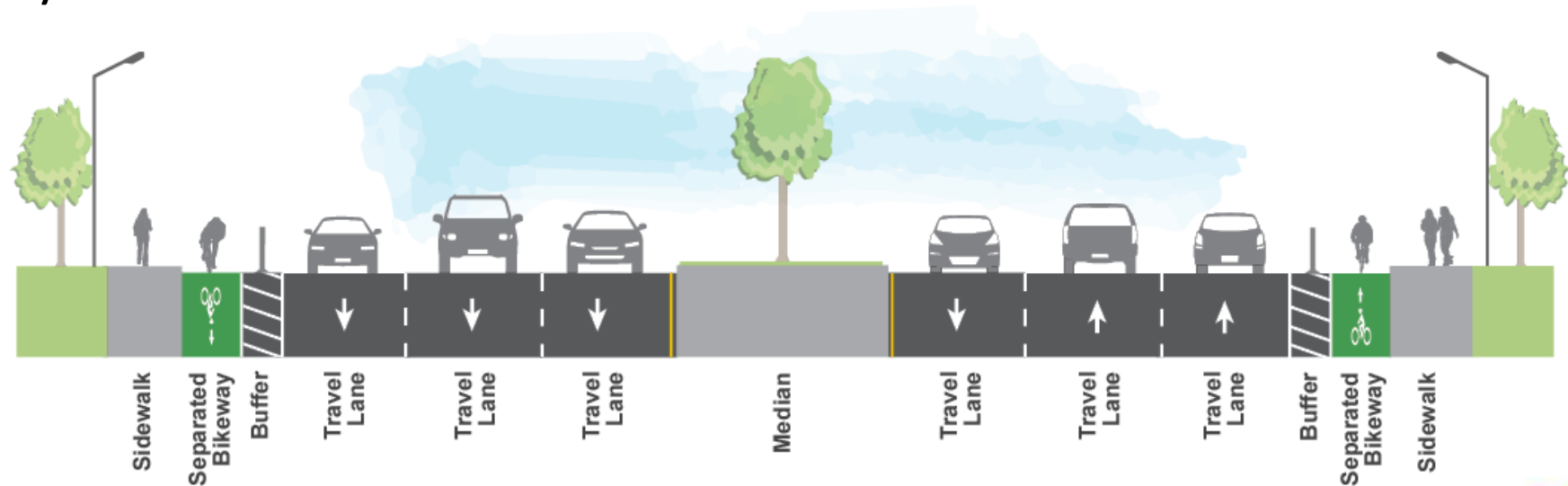




# Primary Focus Corridors

## Camino Santa Fe

- Corridor-wide Improvements
  - Separated bikeways



# Primary Focus Corridors – Intersection Concept

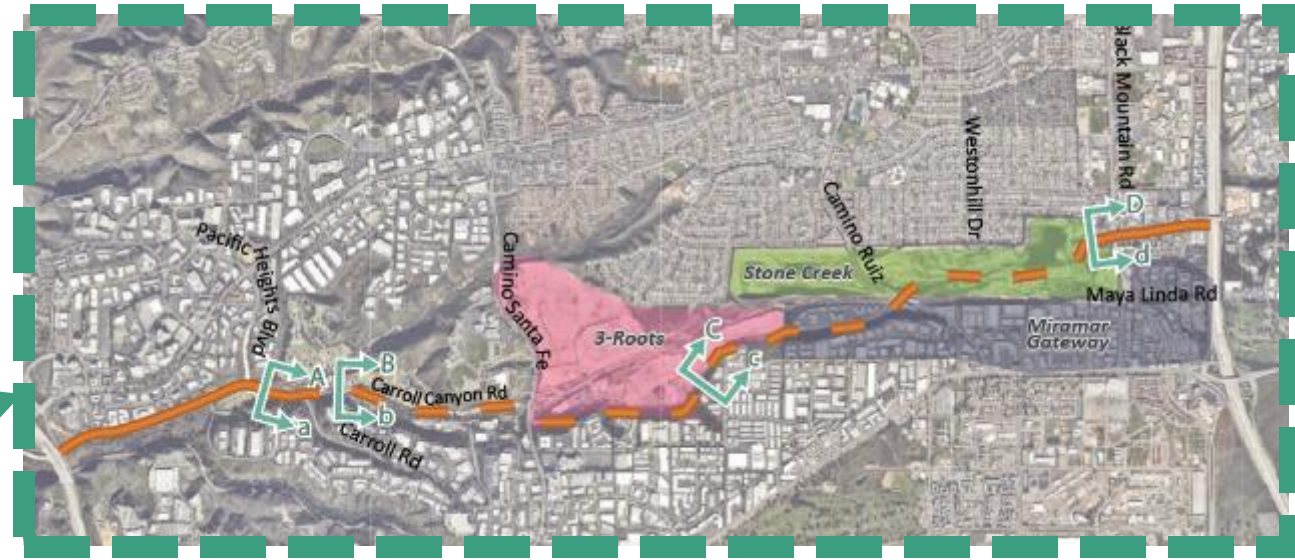
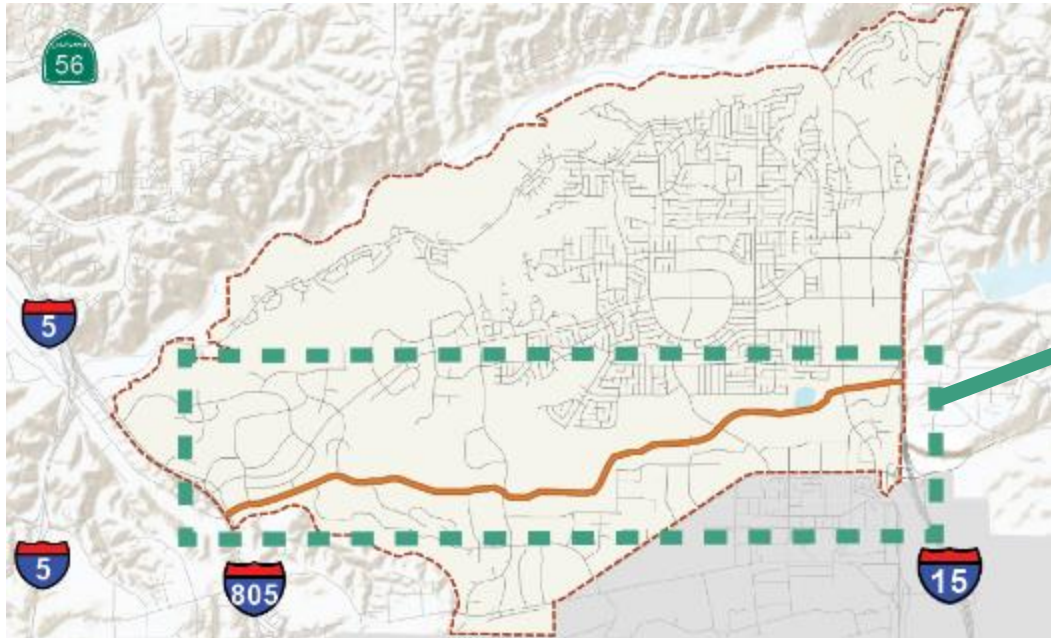
Camino Santa Fe at Flanders Dr





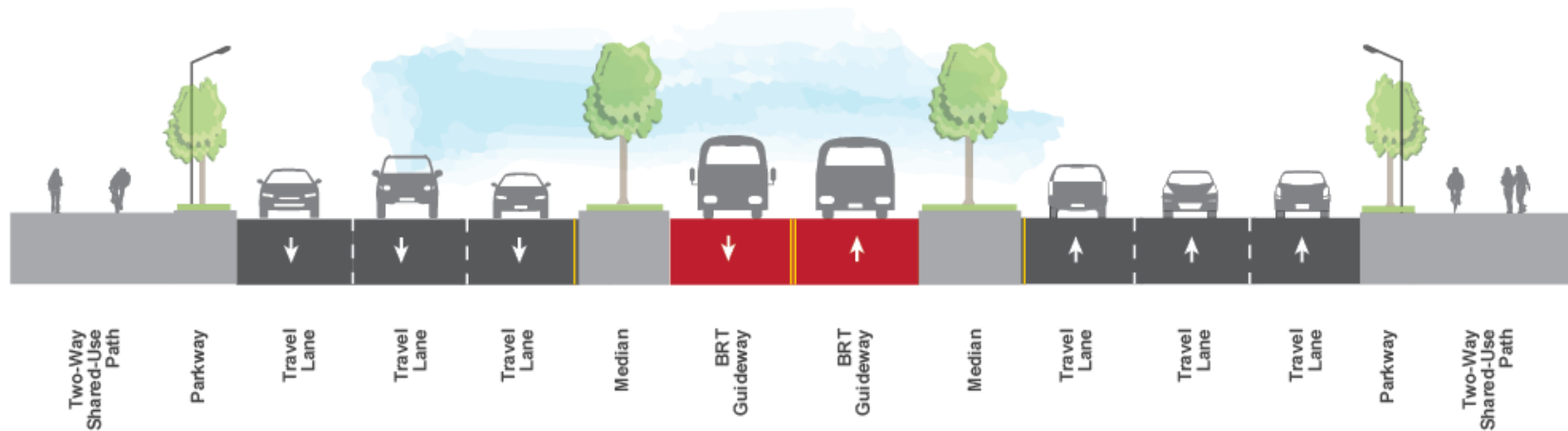
# Primary Focus Corridors

## Carroll Canyon Road



# Primary Focus Corridors

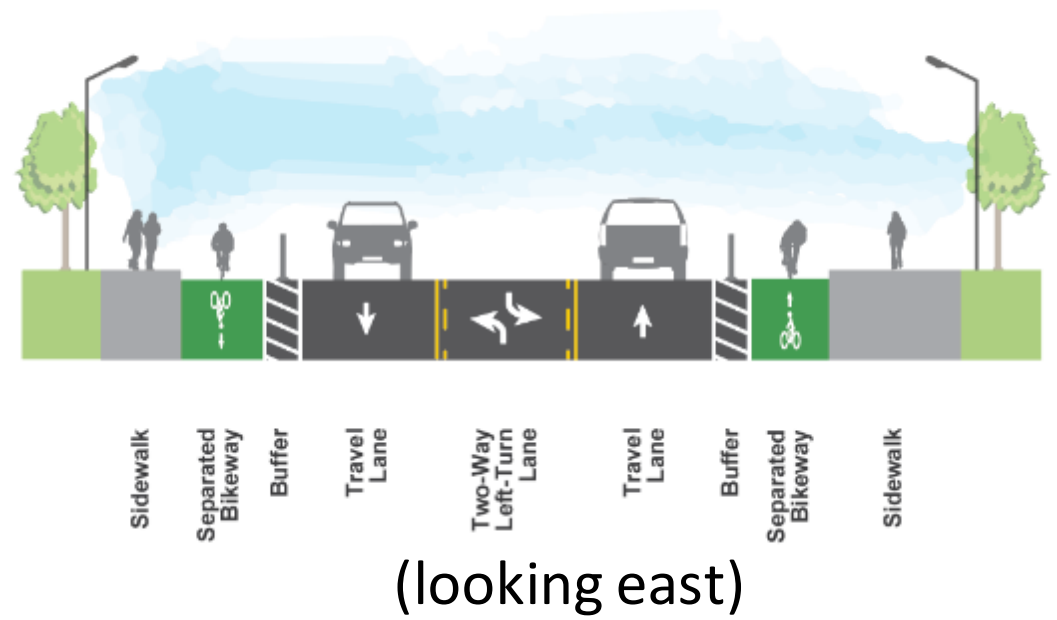
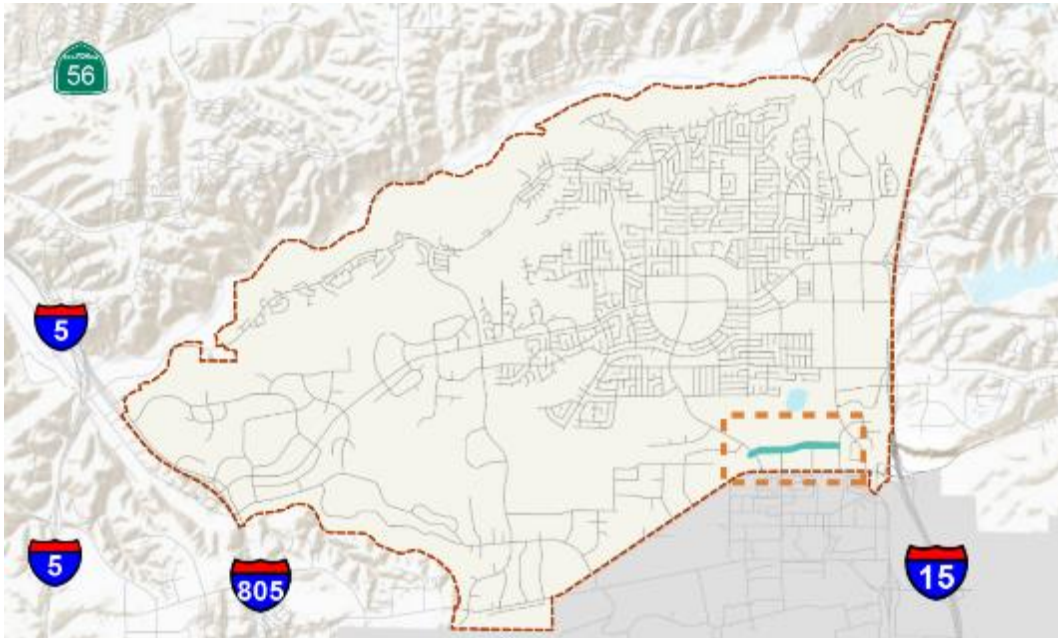
## Carroll Canyon Road





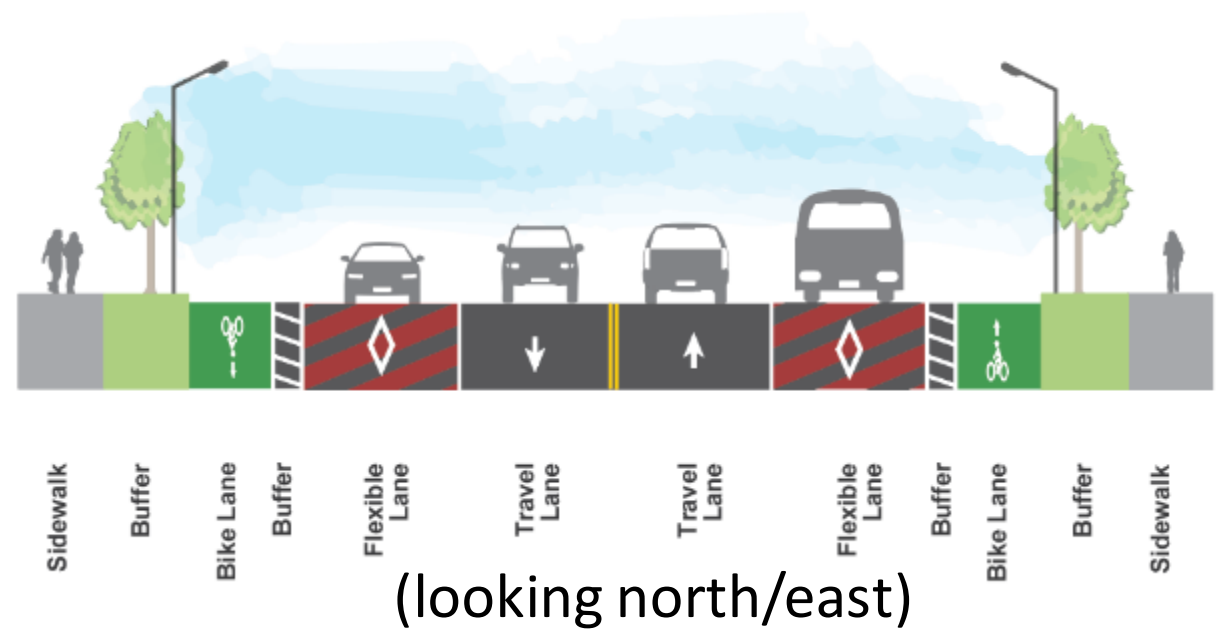
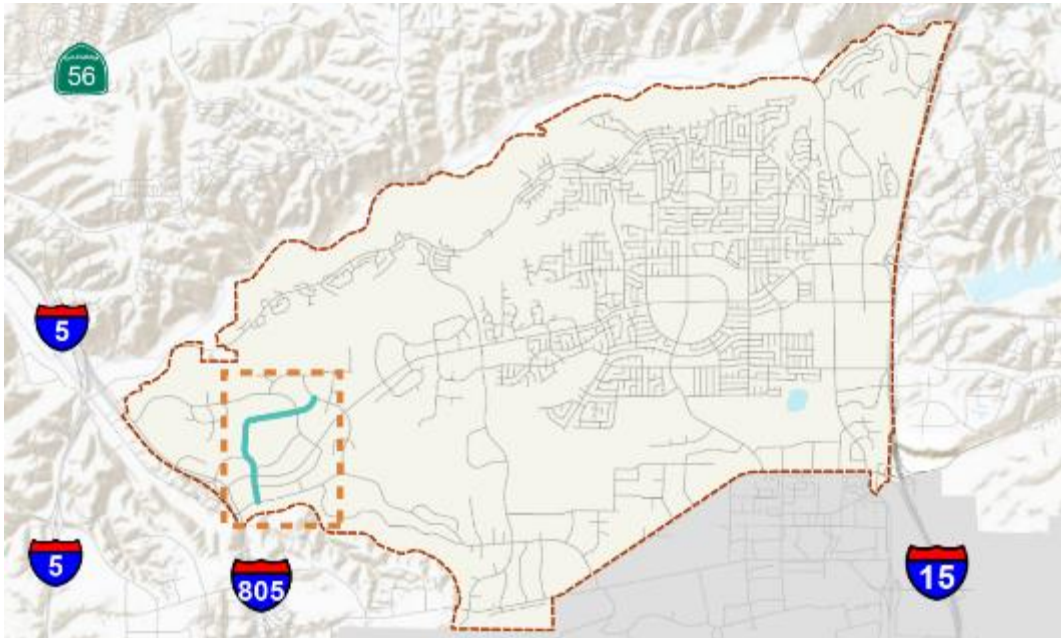
# Secondary Focus Corridors

## Activity Road



# Secondary Focus Corridors

## Barnes Canyon Rd/ Scranton Rd

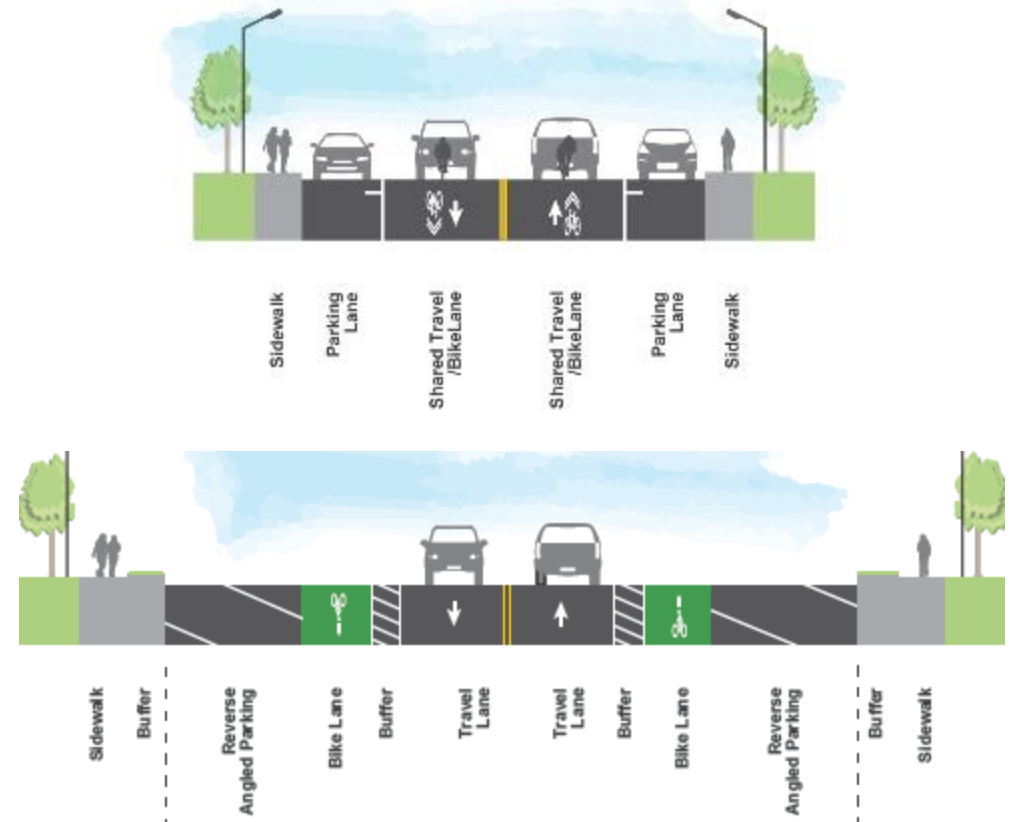
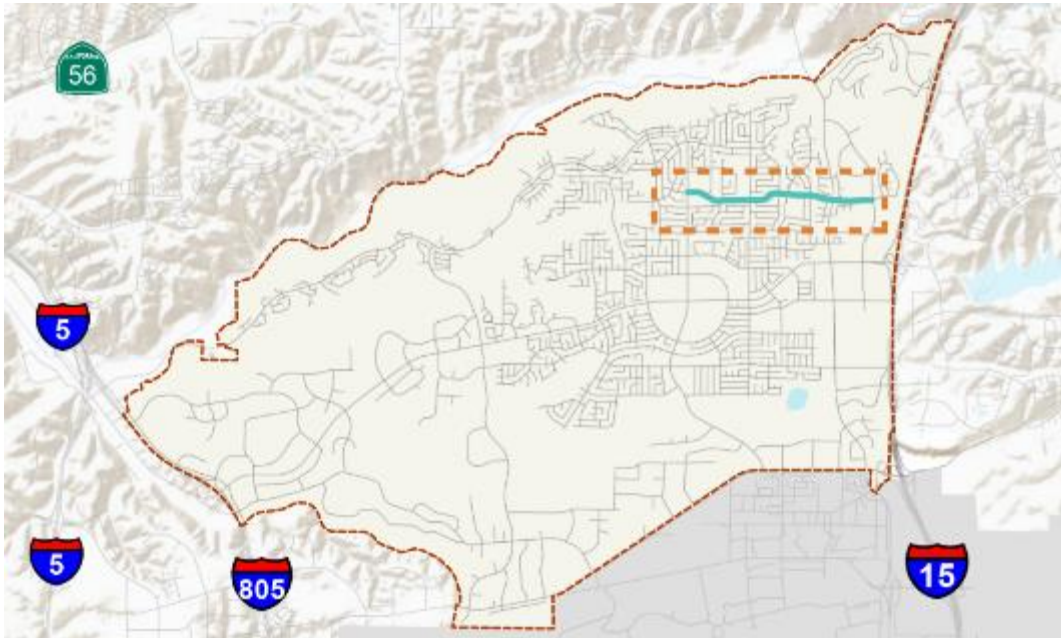


(looking north/east)



# Secondary Focus Corridors

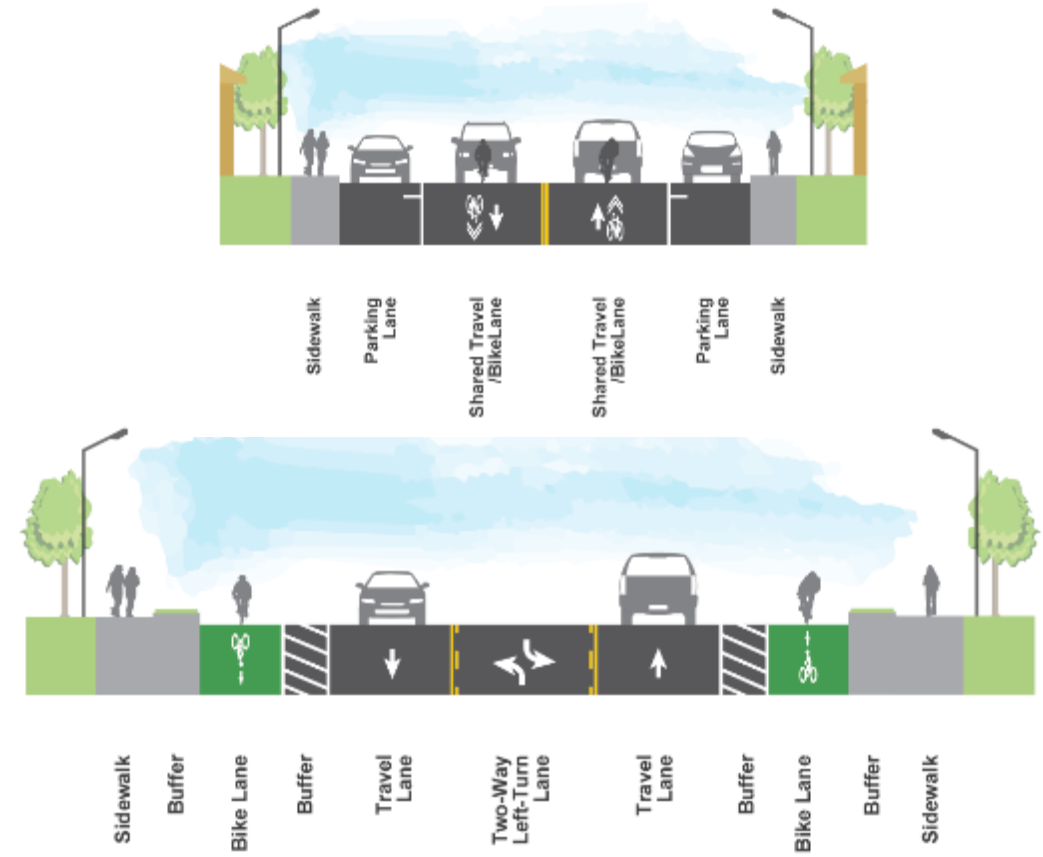
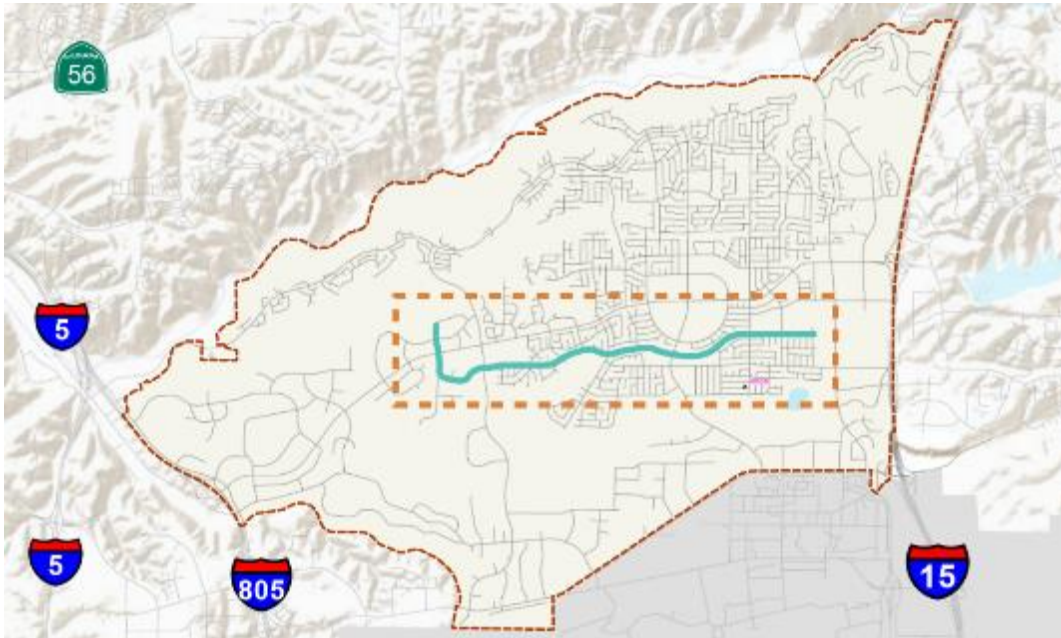
## Capricorn Way



(looking east)

# Secondary Focus Corridors

## Flanders Drive

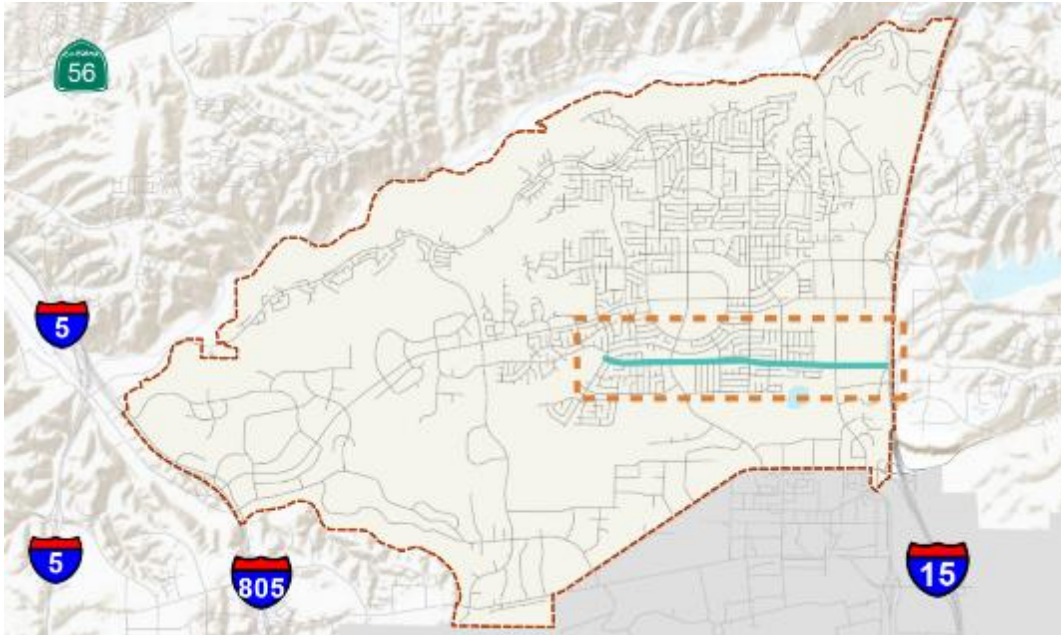


(looking east)



# Secondary Focus Corridors

## Gold Coast Drive



Sidewalk

Parking  
Lane

Shared Travel  
/Bike Lane

Shared Travel  
/Bike Lane

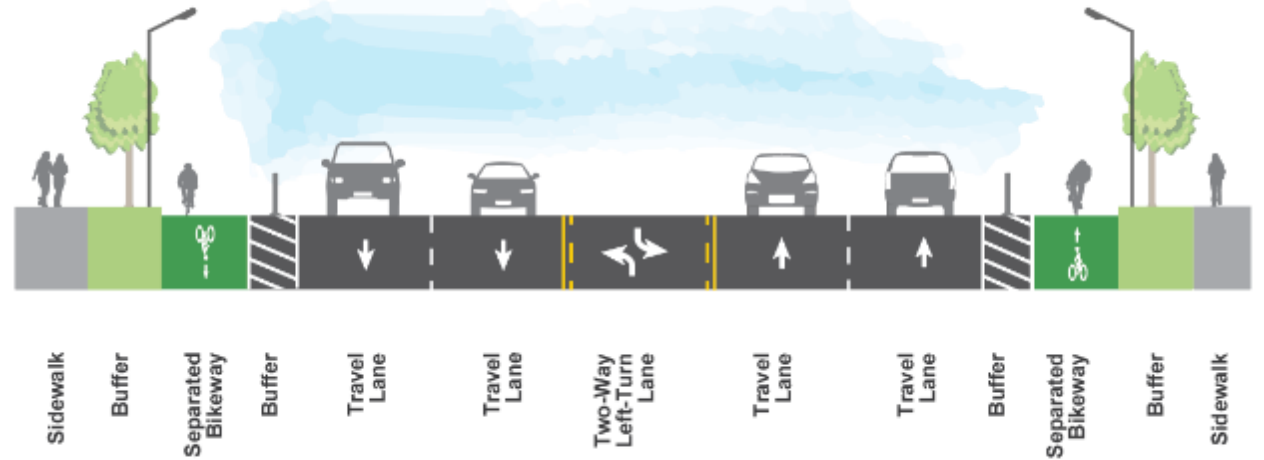
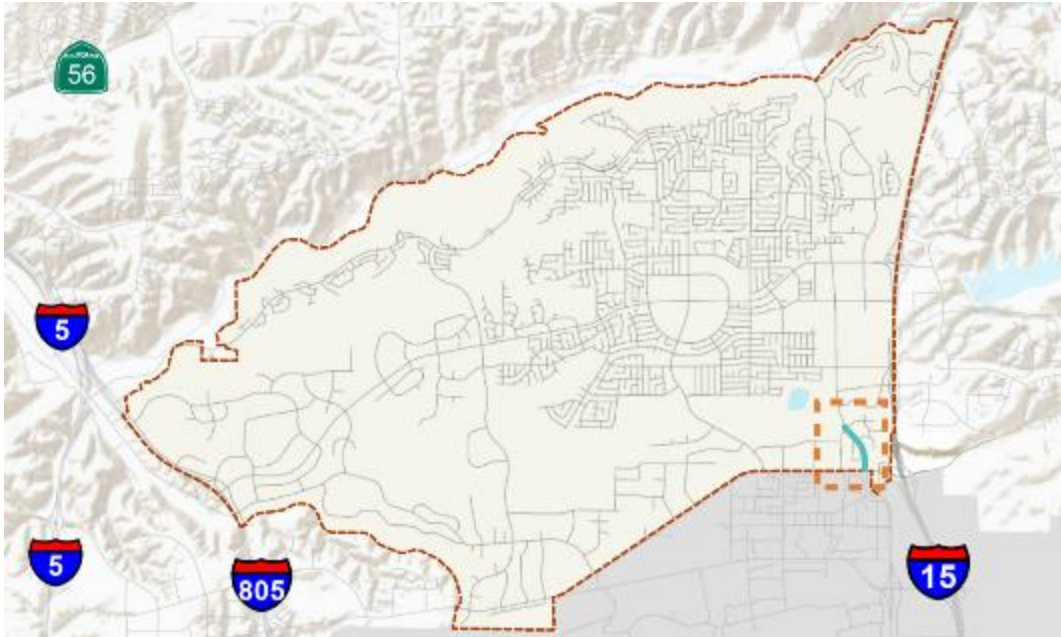
Parking  
Lane

Sidewalk

(looking east)

# Secondary Focus Corridors

## Kearny Villa Road

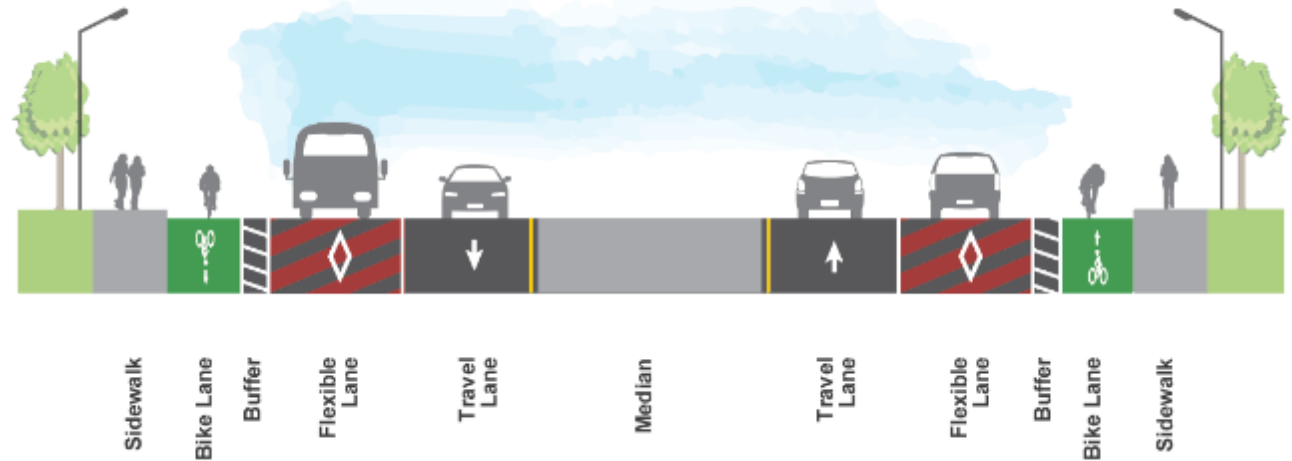
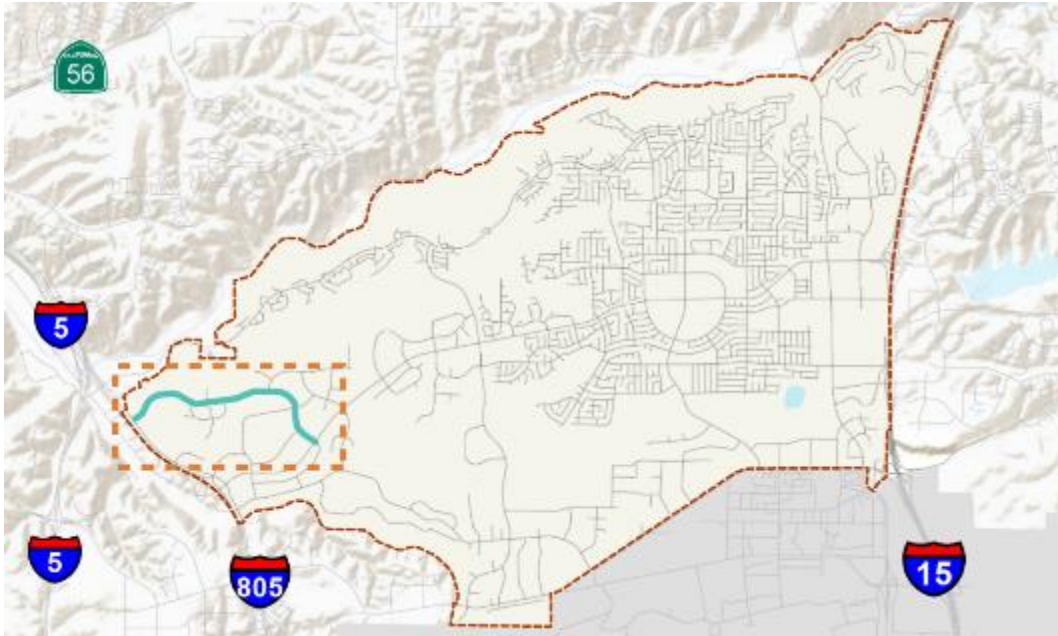


(looking north)



# Secondary Focus Corridors

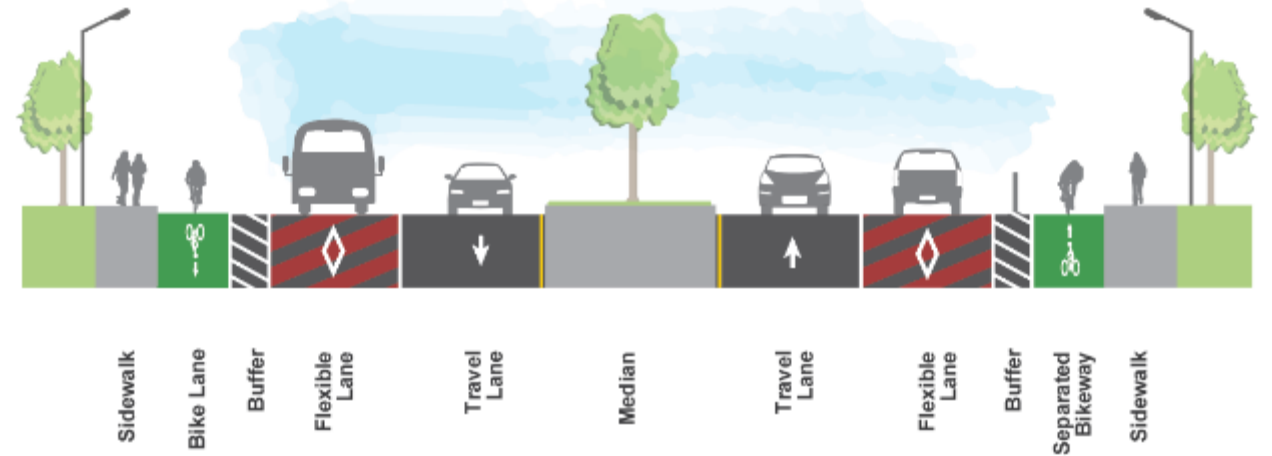
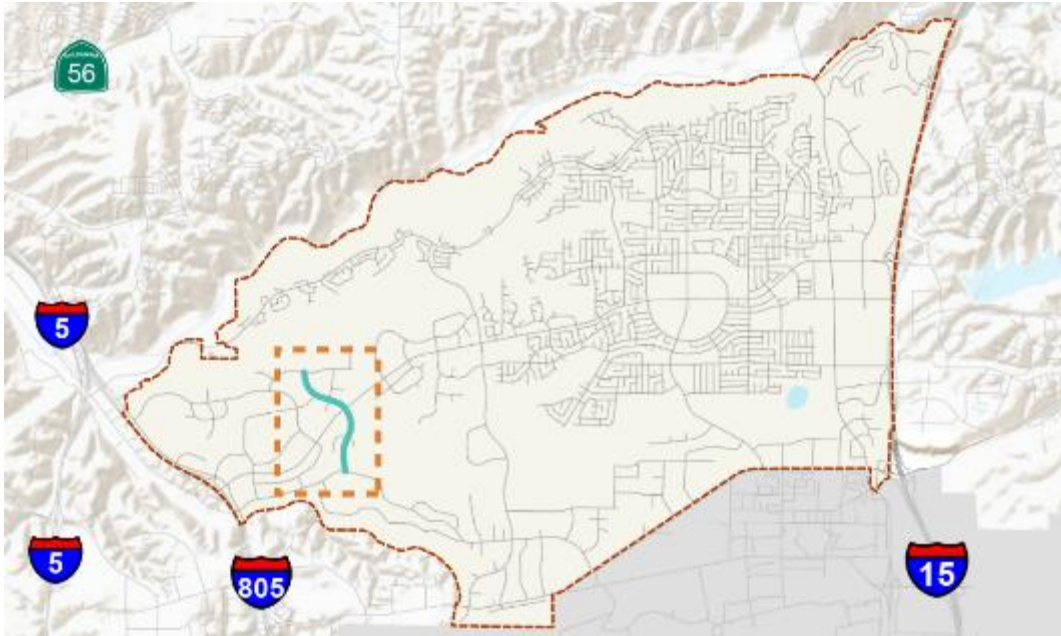
## Lusk Boulevard



(looking east)

# Secondary Focus Corridors

## Pacific Heights Boulevard

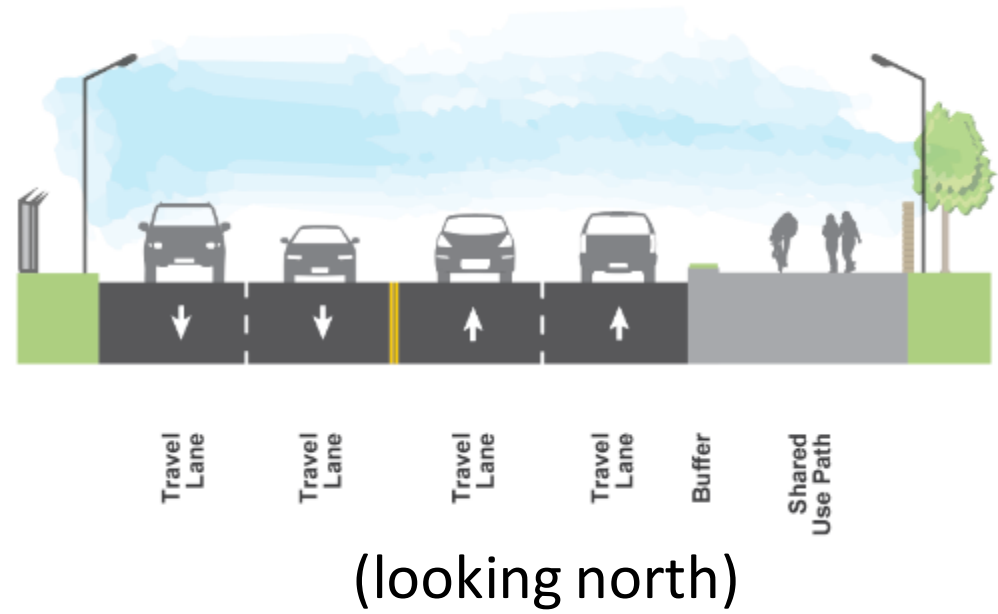
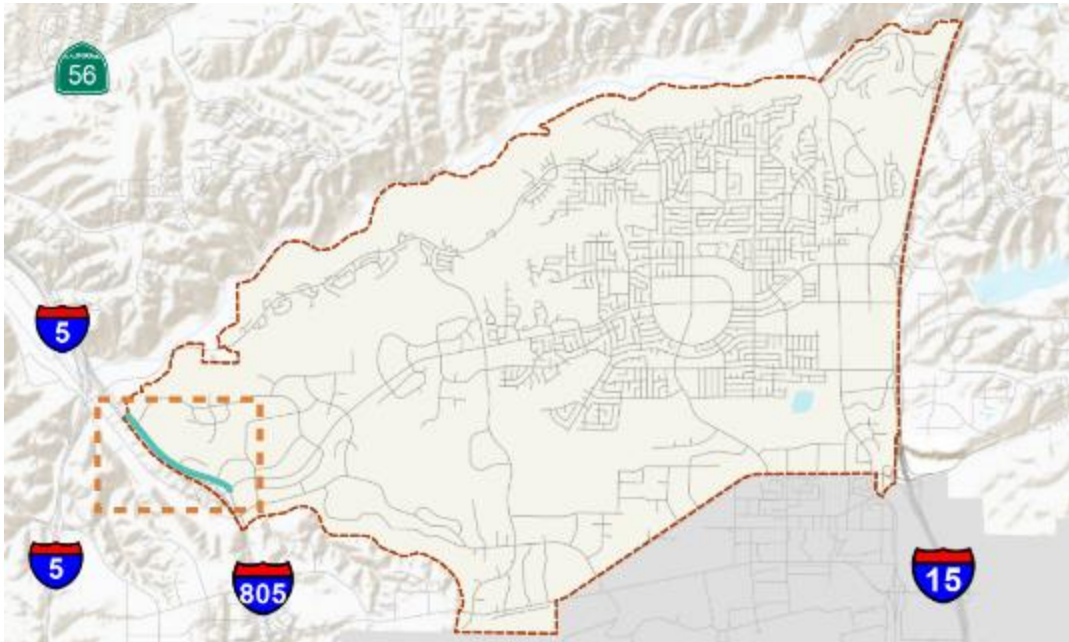


(looking north)



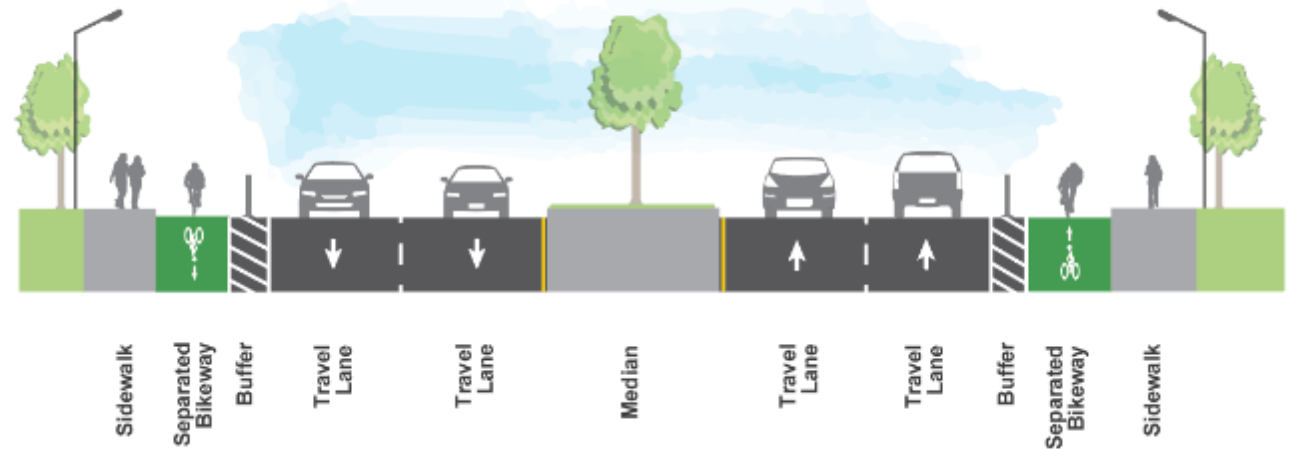
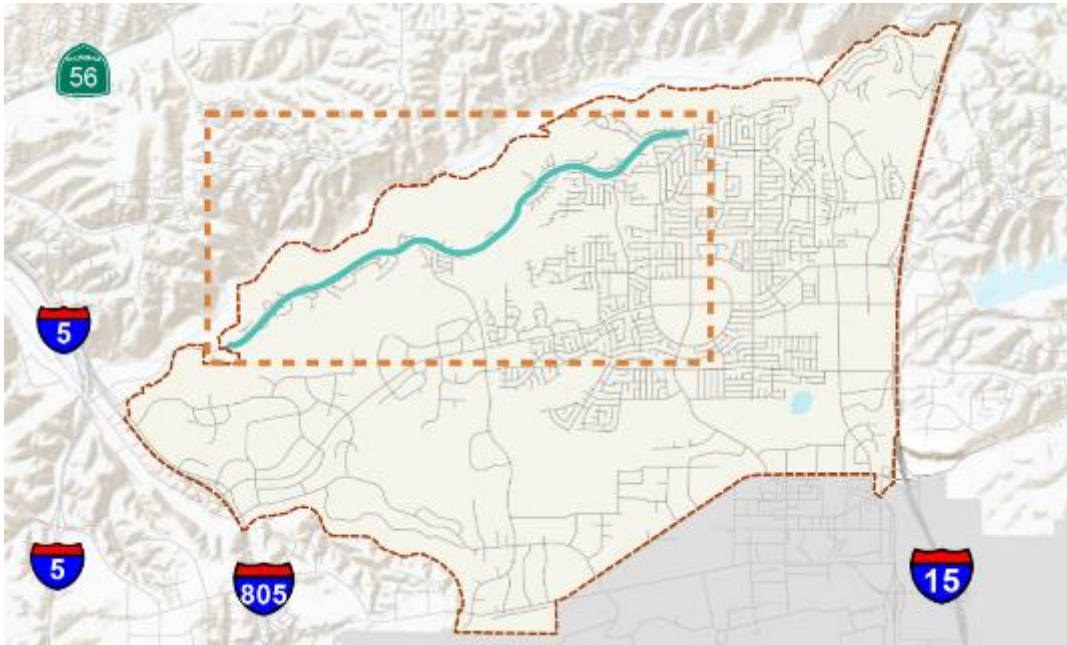
# Secondary Focus Corridors

## Vista Sorrento Parkway



# Secondary Focus Corridors

Sorrento Valley Pkwy/Calle Cristobal



(looking east)





# Next Steps

- Community workshop for Mobility, Land Use, and Urban Design (June 3<sup>rd</sup>)
- Refine networks/concepts based on feedback
- Model and analyze future network

- Questions/comments?

Email: [afrost@sandiego.gov](mailto:afrost@sandiego.gov)

For more information please visit:

[www.PlanMiraMesa.org](http://www.PlanMiraMesa.org)