

Online Community Engagement Tool: Mira Mesa Community Plan Update

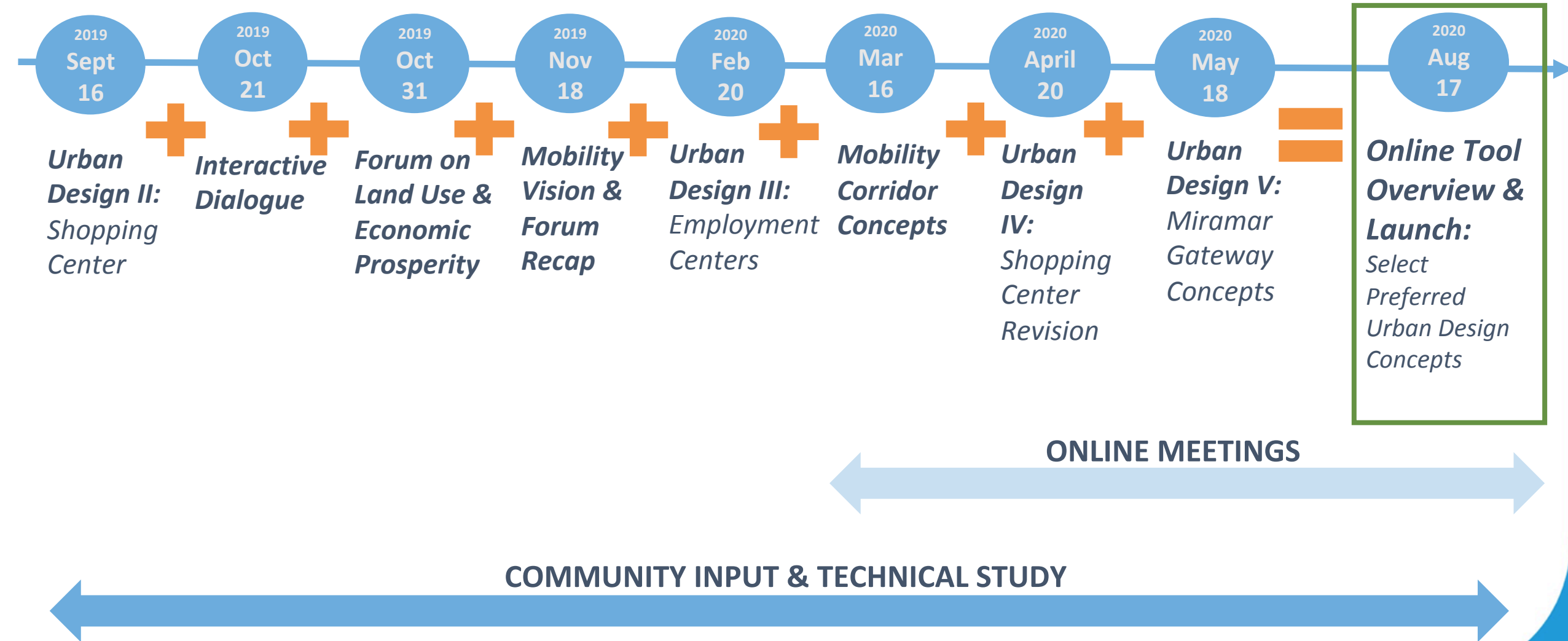
Planning Department

August 17, 2020

6:00 p.m. to 6:50 p.m. – Mira Mesa Community Plan Update Advisory Committee – **Live Webinar**

AGENDA

- 1. Call to Order / Roll Call by Chair: Jeff Stevens**
- 2. Non-Agenda Public Comment (via email): Jeff Stevens**
- 3. Online Community Engagement Tool (OCET): Alex Frost**
- 4. Discussion**



PURPOSE

- To provide a more innovative approach to public engagement that:
 - Reaches a broader audience
 - Convenient to use
 - Results easily summarized
- Informs the development of land use alternatives for the Mira Mesa Community Plan Update



OBJECTIVE

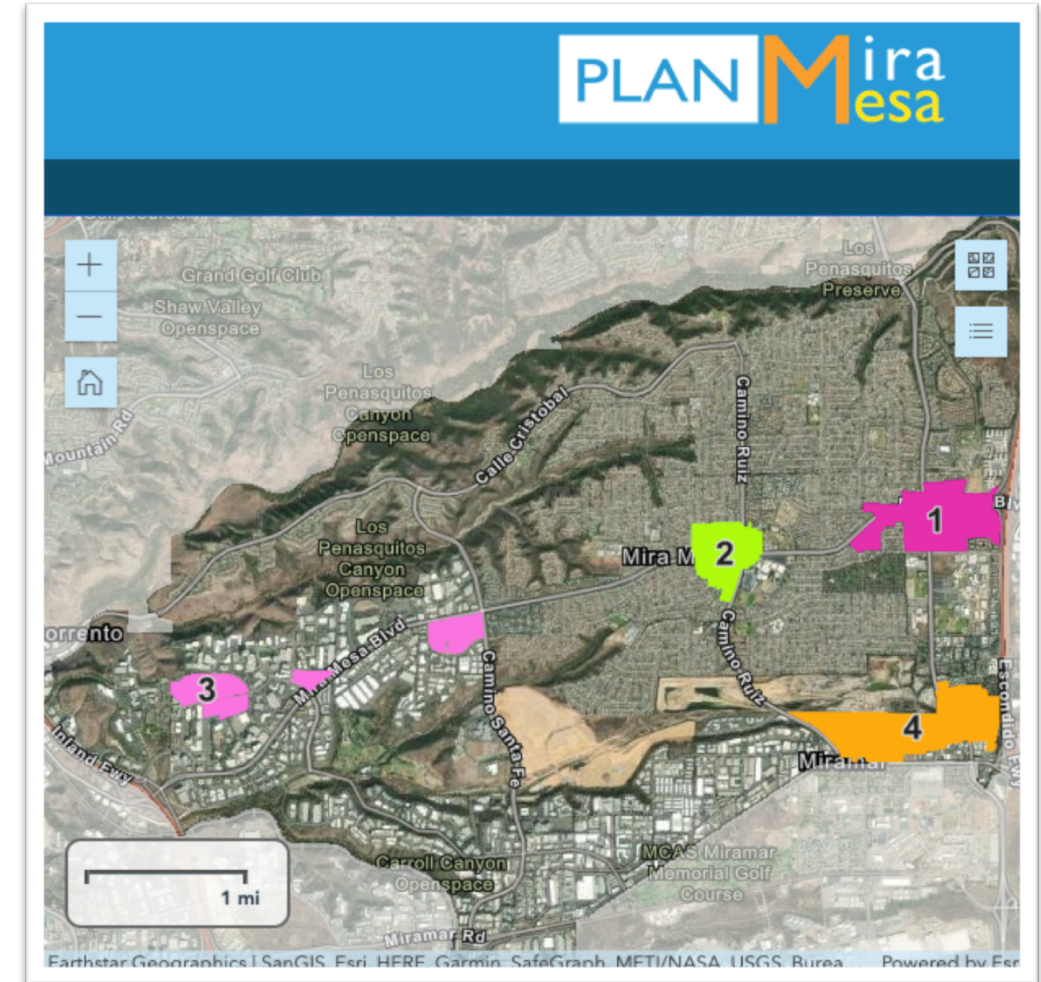
- 1 Click on a focus area
- 2 Explore different scenario
- 3 Select your preferred option

Shape Mira Mesa's Future!



FOCUS AREAS

- Focus areas were selected based on extensive public input and technical studies such as:
 - Mira Mesa Community Atlas
 - Draft Collocation Studies
 - Forum on Land Use and Economic Prosperity
- Not all potential sites were included in the tool, but the results from the survey will help inform the land use alternatives



URBAN DESIGN CONCEPTS

- A location-specific development type to explore how the community can grow over the next 20 years
- The outcome metrics highlight potential new jobs, housing, parks (any publicly accessible spaces), and community investment that could be generated from each scenario.
- All images are shown to illustrate planning concepts only and do not represent a design, project or land use proposal

Shape Mira Mesa's Future!

Focus Areas / Subarea A Scenarios

Focus Area 3 - Subarea A Acreage: 38

Select a development option for subarea A, then click 'Next' to continue to the next subarea. Your results will be reflected on the aerial map.

☐ Option 1 - Science & Tech Park [View Images and Data](#)

☐ Option 2 - Science & Tech Village [View Images and Data](#)

☐ Option 3 - Science & Tech Hub [View Images and Data](#)

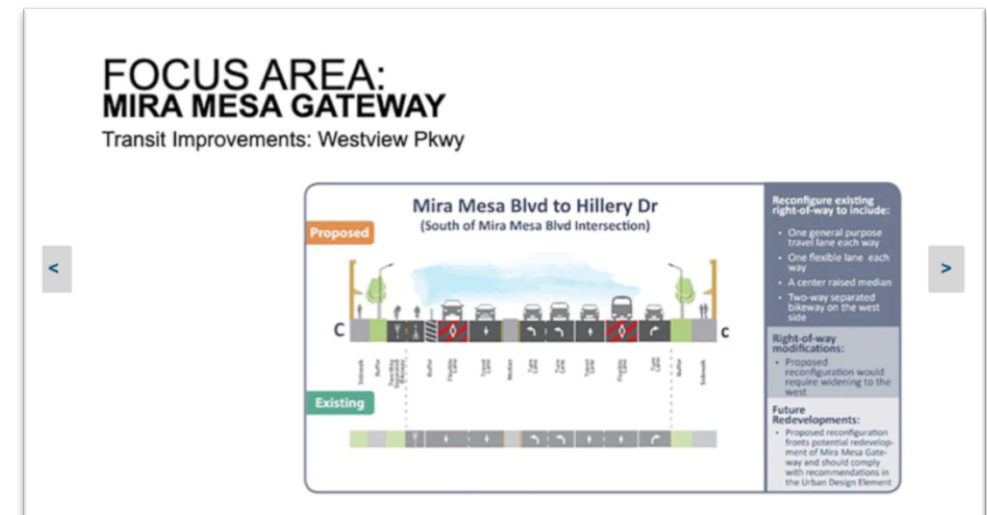
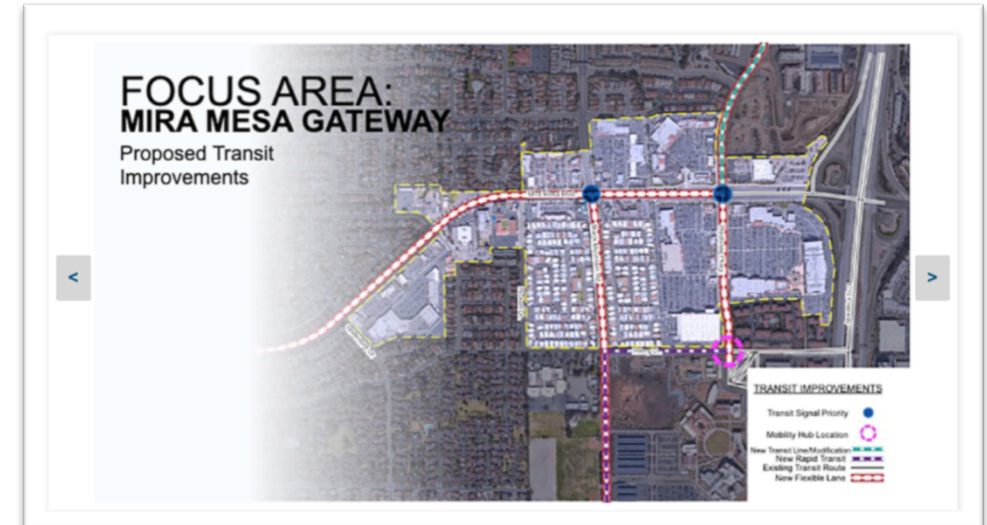
Jobs	Housing	Parks	Investment
3	1	1	\$

Jobs	Housing	Parks	Investment
3	2	1	\$

Jobs	Housing	Parks	Investment
3	2	1	\$

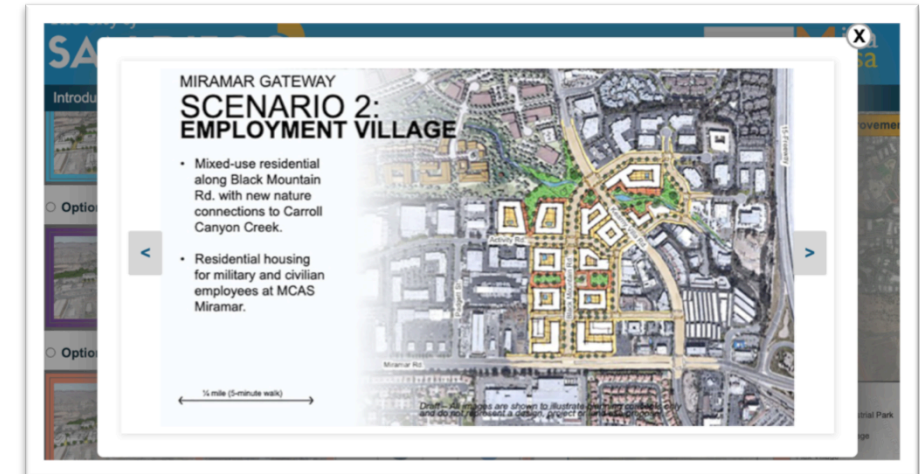
MOBILITY CONCEPTS

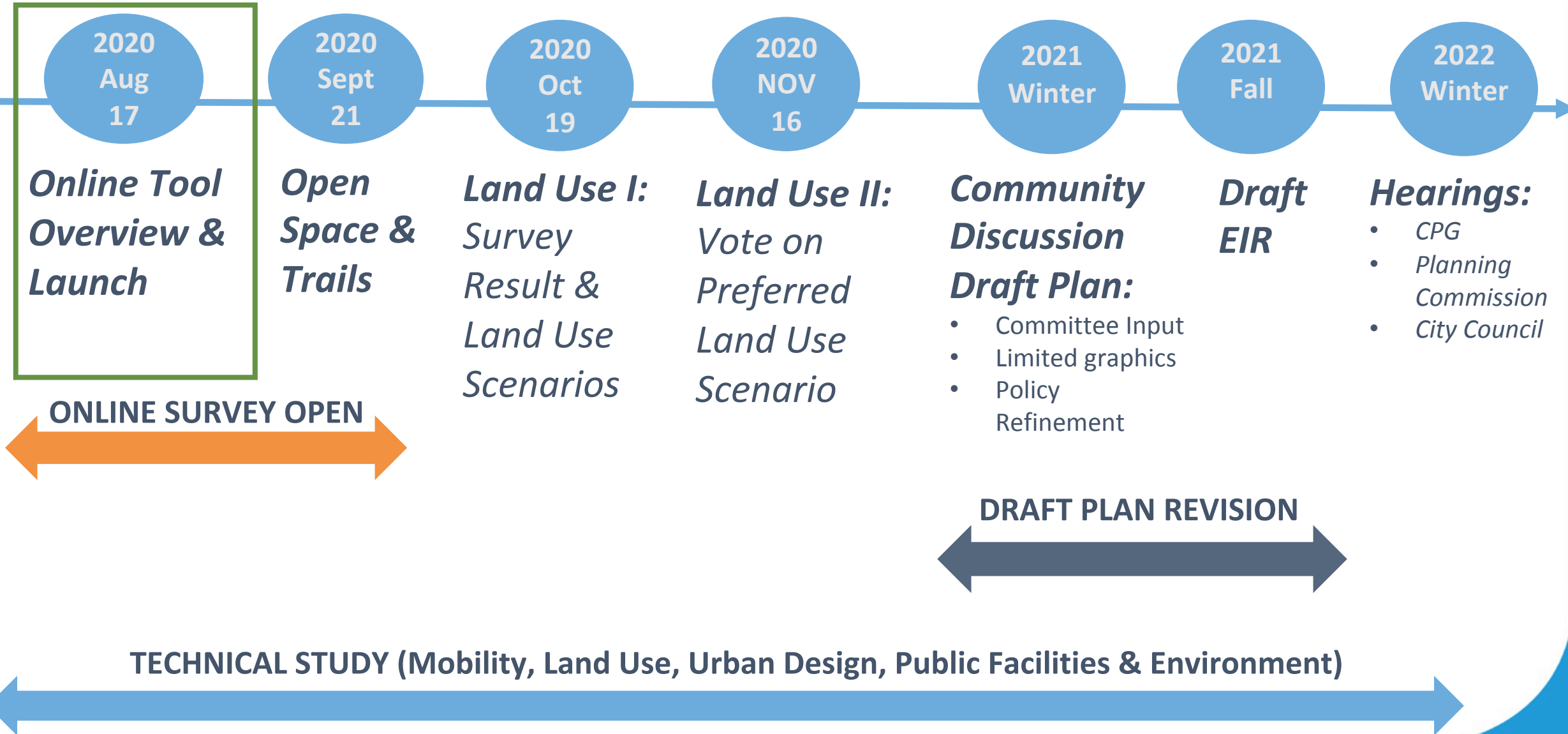
- Proposed mobility improvements are also highlighted for each focus area:
 - Proposed Bike Network
 - Proposed Transit
 - Proposed Street Cross Section



GENERAL INFORMATION

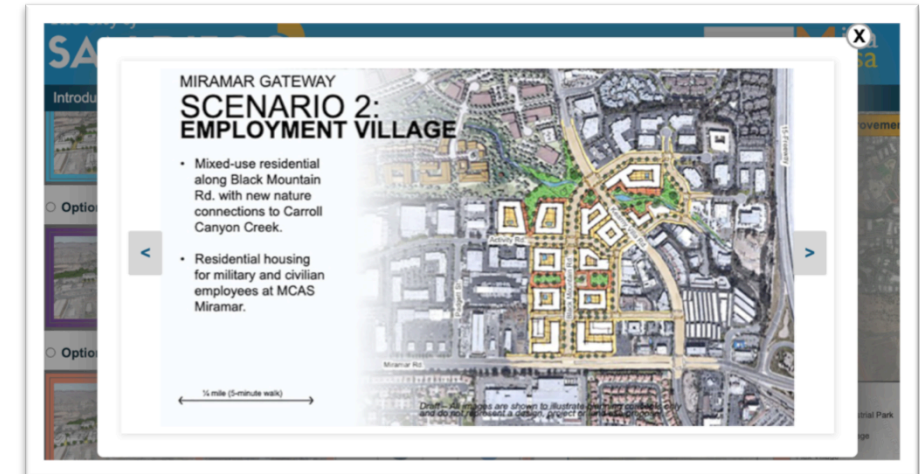
- Tool can be accessed on the project website: www.PlanMiraMesa.org
- Participants must make selections for all of the focus areas
- Survey can be completed in 5 to 15 minutes
- Survey on the phone is best taken in landscape mode





NEXT STEPS

- Tool can be accessed on the project website: www.PlanMiraMesa.org
- OCET Outreach & Engagement
- Please share the survey to anyone that might be interested!



Introduction FAQ Give Input

Option 1 - Science & Tech Park

[View Images and Data](#)



Jobs	Housing	Parks	Investment

Option 2 - Science & Tech Village

[View Images and Data](#)



Jobs	Housing	Parks	Investment

Option 3 - Science & Tech Hub

[View Images and Data](#)



Jobs	Housing	Parks	Investment

Live Demo



Introduction **FAQ** Give Input

☐ **Option 1 - Science & Tech Park**

[View Images and Data](#)



Jobs	Housing	Parks	Investment



☐ **Option 2 - Science & Tech Village**

[View Images and Data](#)



Jobs	Housing	Parks	Investment



☐ **Option 3 - Science & Tech Hub**

[View Images and Data](#)



Jobs	Housing	Parks	Investment



Discussion/Q&A