



CITY OF SAN DIEGO - 1222 FIRST AVE., SAN DIEGO, CA 92101

PUBLIC NOTICE

Date: Feb. 26, 2021

Subject: Release of Preliminary Review Maps of Proposed Revisions to Earthquake Fault Zones

Preliminary Review Maps of proposed new and revised Alquist-Priolo Earthquake Fault Zones were released to the City of San Diego by the Department of Conservation, California Geological Survey (CGS) on Feb. 18, 2021. These maps are released under the authority of the Alquist-Priolo Earthquake Fault Zoning (AP) Act that was passed following the 1971 San Fernando earthquake. The AP Act is a state law designed to reduce the hazard from surface fault rupture during an earthquake.

What are Earthquake Fault Zones?

Earthquake fault zones are regulatory zones that encompass surface traces of active faults that have a potential for future surface fault rupture. These zones generally are delineated by establishing a buffer area about 500 feet on either side of the surface trace of active faults. The accompanying map on page 3 shows the proposed earthquake fault zones' general location within the City of San Diego. Detailed maps can be obtained from the CGS website at www.conservation.ca.gov/cgs/preliminary-releases.

What does it mean to be located within an Earthquake Fault Zone?

It means that an active fault is present within the zone, and the fault may pose a risk of surface fault rupture to existing or future structures. If development, subdivision or building construction is proposed on a property, a fault study may be required. If a property is developed, the AP Act requires that the fact that the property is located within an earthquake fault zone be disclosed by the seller to a prospective buyer for all real estate transactions. Additional information on earthquake fault zones and disclosure can be found at the CGS Alquist-Priolo web page by visiting www.conservation.ca.gov/cgs/alquist-priolo.

Index Map of Proposed and Existing Earthquake Fault Zones

Please review the map of proposed and existing earthquake fault zones on the next page.

Public Comment Period Ends May 19, 2021

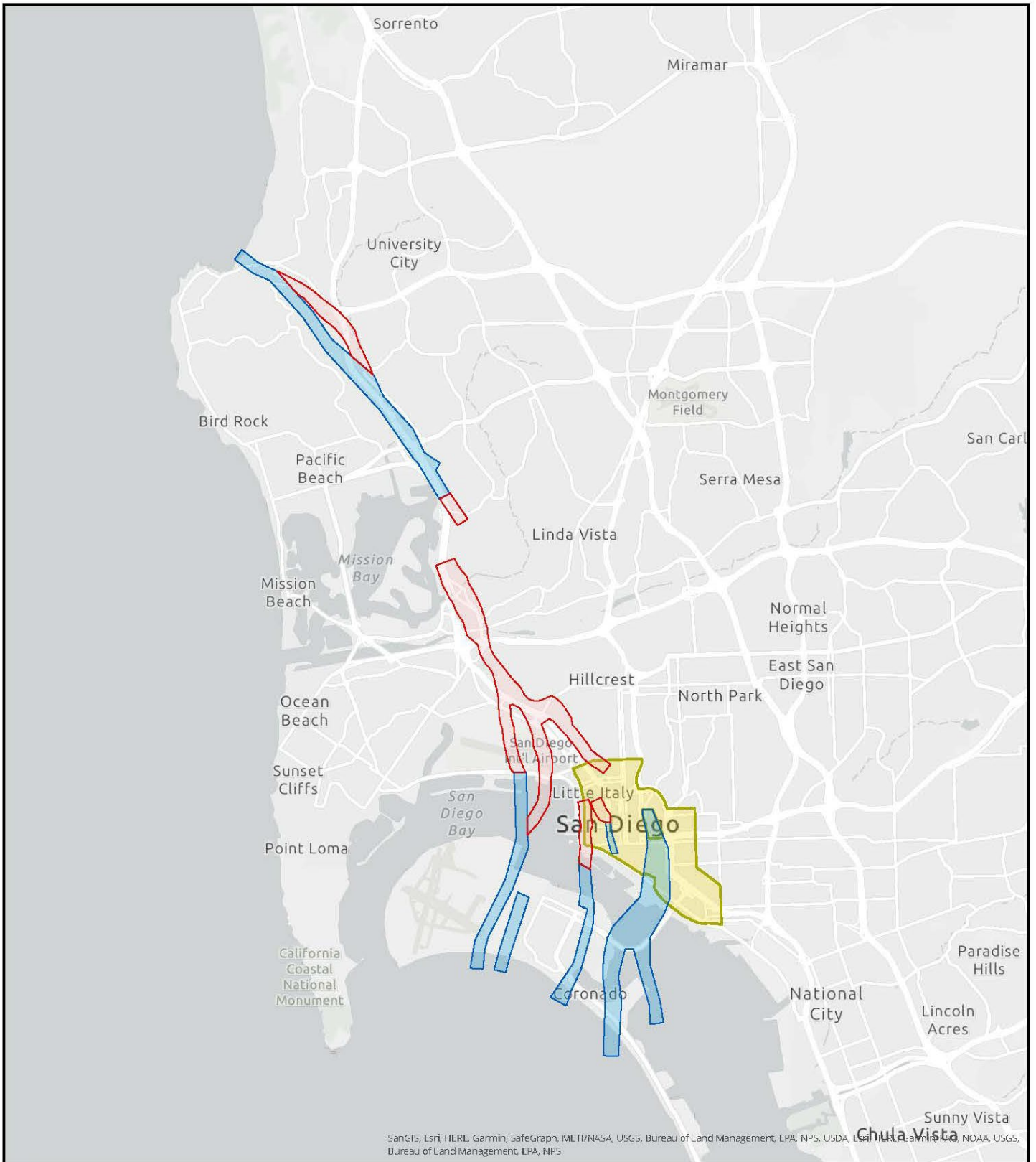
The Feb. 18, 2021, release date begins a 90-day public comment period designed to provide the opportunity for the State Mining and Geology Board to receive technical review comments that may have a bearing on the proposed Earthquake Fault Zones maps.

Comments should be sent to the State Mining and Geology Board before May 19, 2021, and addressed to:

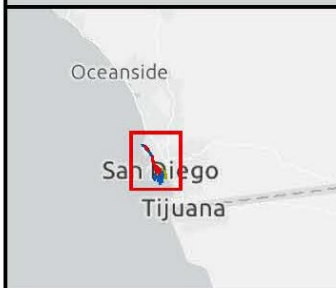
Jeffrey Schmidt, Executive Officer
State Mining and Geology Board
801 K Street, MS 20-15
Sacramento, CA 95814-3528
Email: smgb@conservation.ca.gov
Phone: 916-322-1082

Public Hearing

The State Mining and Geology Board (SMGB) will hold a public hearing near the end of the 90-day review period. For more information on the date and location of the public hearing, contact the SMGB by visiting www.conservation.ca.gov/smgb.



SanGIS, Esri, HERE, Garmin, SafeGraph, METI/NASA, USGS, Bureau of Land Management, EPA, NPS, USDA, Esri, HERE, Garmin, NOAA, USGS, Bureau of Land Management, EPA, NPS



Proposed Earthquake Fault Zone

Existing Alquist-Priolo (AP) Earthquake Fault Zone Existing Downtown Special Fault Zone/AP Zone Proposed Fault Zone	2021
Coordinate System: NAD 1983 California Teale Albers	