

**2020 REDISTRICTING
COMMISSION OF THE
CITY OF SAN DIEGO**

DATE: ~~Dec~~November ___, 2021

TO: City Clerk

FROM: 2020 Redistricting Commission

SUBJECT: Filing of ~~Final~~Preliminary Redistricting Plan for the City of San Diego

INTRODUCTION

The City of San Diego 2020 Redistricting Commission (“the Redistricting Commission” or “Commission”) is vested with sole and exclusive authority to adopt plans that specify the boundaries of districts for the Council of the City of San Diego (“City Council”). San Diego City Charter (“Charter”) sections 5 and 5.1 were enacted by the voters in 1992 to create an independent Redistricting Commission to draw City Council districts in compliance with the law.

The nine-member Redistricting Commission voted 7-2 to adopt a Preliminary Redistricting Map and Plan (“the Preliminary Map and Plan”) on November 13, 2021. The Preliminary Map and Plan was filed with the Office of the City Clerk on November 15, 2021. The Redistricting Commission then held five additional public hearings as required by the Charter. The hearings were attended by 666[insert number] people, including 248 [insert number]-who gave public testimony and 574 [insert number]-who provided written comments. Pursuant to Government Code Section 54953(e), due to the declared state of emergency relating to the COVID-19 pandemic, the Commission met exclusively via teleconference because the Commission found that meeting in person would have presented imminent threats to the health and safety of attendees. Teleconference meetings were noticed as required by applicable law, accessible to all members of the public, and the Commission provided ample opportunity for members of the public to address the Commission and comment directly.

After the five public hearings and deliberation regarding potential changes to the Preliminary Map and Plan, the Redistricting Commission approved the following changes to the Preliminary Map and Plan:

- A general cleanup of the map to follow Community Planning Area boundaries and assign previously unassigned small portions to the adjacent district.
- Moved Mount Hope and a portion of Mountain View from District 4 to District 9 to maintain the Latino Citizen Voting Age Population above 30%.
- Moved 2 census blocks in the Birdland community that were north of Friars Road from District 3 to District 7.
- Moved all of Torrey Hills, including the portion in the Los Peñasquitos Canyon Preserve Community Planning Area, from District 6 to District 1.
- Moved Torrey Highlands, except for the portion in the 92130 zip code, to District 5.
- United Pacific Beach into District 1.

- United Kearny Mesa, except for the portion east of State Route 163 and south of Balboa Avenue, into District 6.
- Moved the southeastern portion of the Torrey Pines Community Planning Area and the east end of the Torrey Pines Preserve into District 1.
- United Mission Trails Regional Park in District 7.
- Moved the Old Town Community Planning Area from District 3 to District 2.
- Moved the portion of Mission Valley east of Interstate 15 and north of interstate 8 from District 9 to District 7.
- Moved Stockton from District 8 to District 9.
- Moved the southern portion of Scripps Ranch from District 6 into District 5, and moved the western portion of Scripps Ranch from District 5 to District 6.

On December 15, 2021, the Commission voted [insert vote count] to adopt the Final Redistricting Map and Plan (“Final Map and Plan”). The Final Map and Plan complies with the redistricting criteria and legal requirements of the U.S. Constitution; Charter sections 5 and 5.1; ~~the U.S. Constitution~~; the federal Voting Rights Act of 1965; and related applicable cases and statutes. The Redistricting Commission considered and relied upon traditional redistricting criteria and data in drawing and adopting new City Council district boundaries.

In preparing the Final Map and Plan, the Redistricting Commission followed these principles, as much as possible and when practical to do so:

- Substantially ~~Equalize~~ the population by forming City Council districts designated by numbers 1 to 9, inclusive, which contain, as nearly as practicable, one-ninth of the total population of the City of San Diego as shown by the federal Census numbers of 2020;
- Avoid diluting the voting strength of protected classes as set forth in the federal Voting Rights Act of 1965 ~~as much as possible~~;
- Provide fair and effective representation for all citizens of the City, including racial, ethnic, and language minorities, and be in conformance with the requirements of the United States Constitution and applicable ~~Federal~~ statutes;
- Use contiguous territory to form districts, with reasonable access between population centers in the district;
- Use whole Census tracts or blocks to the extent it is practical to do so;
- Preserve identifiable communities of interest;
- Observe natural boundaries as district dividing lines;
- Draw districts as geographically compact as possible and practical to do so;
- Not draw districts for the purpose of advantaging or protecting incumbents;
- Recognize that the City has a well-organized group of communities and neighborhoods, which has created strong communities of interest; and thus, ensure that each Community Planning Area and neighborhood is intact in a single district to the extent possible, while adhering to the law and applying and balancing traditional redistricting principles.

Meetings and testimony: The Redistricting Commission convened ~~3226~~ public meetings between October 23, 2020 and ~~November-December~~ 9, 2021, each noticed in accordance with the Ralph M. Brown Act (“Brown Act”). These meetings included ~~twelve-thirteen~~ monthly meetings, nine widely publicized Pre-Map Public Hearings, one for each City Council district, and five additional special meetings, complying with the requirement of the Charter to hold at least nine public hearings before the preparation of a Preliminary Redistricting Plan and five public hearings prior to adopting a Final Map and Plan. Pursuant to the Governor’s Executive Orders N-25-20, N-29-20, N-08-21, and N-15-21, which suspended certain requirements of the Brown Act due to the COVID-19 pandemic, and the findings adopted by the Redistricting Commission pursuant to California Government Code section 54953(e) on October 21 and November 18, 2021, all Redistricting Commission meetings were conducted virtually with all Commissioners and members of the public participating virtually, in the interest of public health and safety. Approximately ~~1,5002,441~~ people attended these meetings and public hearings.

During those meetings and hearings, the Redistricting Commission heard from more than ~~935600~~ public speakers. To date, the Commission has received approximately ~~385209~~ email/letter public comments and ~~656319~~ webform public comments, which were all posted on the Redistricting Commission website. The Commission also received approximately ~~202-248~~ proposed maps, ~~173-766~~ pieces of written testimony and ~~6664~~ Communities of Interest (COI) submissions on Districtr, the online redistricting mapping tool. The Commission considered the testimony, written submissions, and proposed maps before adopting the Final Map and Plan.

Public outreach: Public outreach efforts included providing simultaneous interpretation in Spanish at the August 17, 2021, August 24, 2021, and September 14, 2021 Pre-Map Public Hearings. Agendas were provided in Spanish starting from the May 20, 2021 meeting to the present. For the meetings of May 20, 2021, June 17, 2021, and July 15, 2021, agendas were provided in Arabic, Chinese, Japanese, Korean, Lao, Tagalog, and Vietnamese. Commissioners and the chief of staff provided community outreach presentations to approximately 21 Ceomunity Pplanning Ggroups throughout the City of San Diego. In addition, the recordings of Redistricting Commission meetings and public hearings were posted on the website.

The Commission has been committed to transparency and inclusion in its proceedings. To maximize public access to its proceedings, the Commission procured online redistricting mapping software (Districtr) so the public could draw, share, propose, and submit maps to the Commission. Public training for the software was held on September 16, 2021, September 28, 2021, and October 5, 2021. Training videos were also available on the Commission’s website. All maps submitted to the Commission and developed by the Commission for consideration are available online (<https://portal.sandiego-mapping.org/#gallery>). The Commission’s meetings were also covered by a wide range of San Diego media, which also publicized upcoming hearings and disseminated information about the redistricting process, the Preliminary Map and Plan, and the five subsequent public hearings prior to adoption of the Final Map and Plan.

THE FINAL PRELIMINARY PLAN

A map of the ~~Final~~ Plan (adopted ~~Dec~~November 15, 2021) is attached. The ~~Final Map and~~ Plan divides the City's population of 1,389,899 into nine City Council districts of ~~substantially~~~~approximately~~ equal population. The Commission's goal was to draw districts with as close to a population of 154,433 as possible, while ensuring districts were drawn in compliance with redistricting law and the principles set forth above. The ~~Final Map and~~ Plan has a total population deviation of ~~6.41~~~~5.35~~%. The largest City Council district has a population of ~~158,994~~~~7,634~~ (+~~2.95~~~~07~~% in population); the smallest district has a population of ~~149,097~~~~363~~ (-~~3.46~~~~28~~% in population). Demographics for the districts, including Citizen Voting Age Population (CVAP) and population by racial groups per district, are detailed in attachments to this statement. For consistency, this ~~Final Map and~~ Plan uses the same terminology used by the 2020 Census to describe racial and ethnic groups.

This ~~Final Map and~~ Plan is described below in detail. The Charter directs that the Redistricting Commission consider U.S. Census data. However, due to delays, the U.S. Census has not yet produced CVAP data for the 2020 Census. The United States Department of Justice (DOJ) uses CVAP to investigate and prosecute certain Voting Rights Act cases. In early 2021, the DOJ told the Census Bureau that ~~#redistricting jurisdictions~~ could use CVAP data from the 2019 American Communities Survey (ACS). CVAP data used in this plan refers to the data from the ACS.

Additionally, all definitions of neighborhoods ~~and Community Planning Areas~~ that follow have been matched to the nearest and most logically corresponding Census Block border but may differ from City maps in which City definitions do not follow Census geography. The Community Planning Area (CPA) and Neighborhood areas referred to in this ~~Final Map and~~ Plan were obtained from San Diego County's Geographic Information System (SANGIS) and were available to the public in the Districtr mapping software available on the Commission's website. Detailed demographics for each City Council ~~D~~istrict in the ~~Final Map and~~ Plan appear at the end of this filing statement. The Council Districts described in the Final Map and Plan will be exported from the Districtr mapping system to SANGIS and will align with existing Community Planning Area boundaries as described in the Final Map and Plan. Additionally, upon filing of the Final Map and Plan with the County of San Diego Registrar of Voters (ROV), the ROV may make minor changes to the Final Map and Plan. The Districts may be summarized as follows:

DISTRICT 1

- Community Planning Areas
 - Carmel Valley
 - Del Mar Mesa
 - Fairbanks Ranch Country Club
 - La Jolla
 - Los Peñasquitos Canyon Preserve (partial – western portion)
 - Mission Bay Park (partial – portion that includes the Pacific Beach neighborhood)
 - NFCUA Subarea II
 - Pacific Beach
 - Pacific Highlands Ranch

- Torrey Highlands (partial – 92130 portion)
- Torrey Hills (~~partial – portion north of Carmel Mountain Road~~)
- Torrey Pines (~~partial – excluding southern portion east of Interstate 5~~)
- University (partial – portion weast of Interstate 5)
- Via de la Valle
- Neighborhoods
 - Carmel Valley
 - Del Mar Heights
 - La Jolla
 - Mission Bay (small, non-contiguous portion located within Pacific Beach)
 - North City
 - Pacific Beach (~~partial – portion north of Grand Avenue, Crown Point Drive, and Riviera Drive~~)
 - Sorrento Valley (partial – portion that is in the Torrey Pines Community Planning Area)
 - ~~Rancho Peñasquitos (partial – eastern portion)~~
 - Torrey Highlands (partial – 92130 portion)
 - Torrey Pines
 - Torrey Preserve
- Demographics
 - Total population: ~~156,851~~17,631
 - Deviation: ~~+1.572~~+2.418~~0.07~~3.198 % (+~~2,418,198~~ people)
 - Historical: Approximately 72.7~~68.4~~ % of the population to be included in the new District 1 is presently included in the current District 1.
- Contiguity

The district is geographically contiguous. There is reasonable access between population centers in the district. State Route 56 connects Torrey Hills, Carmel Valley, and Torrey Highlands, ~~and Rancho Peñasquitos~~. Del Mar Heights, Torrey Preserve, Torrey Pines, Sorrento Valley, La Jolla, and Pacific Beach are connected by Interstate 5.
- Findings and Reasons for Adoption
 - Per the 2020 census data, District 1, as currently drawn, started out having a population of 166,620 and was over the ideal district size with a deviation of +7.91%. District 1, as currently drawn, had the highest total population and deviation among the nine Council districts.
 - The Final Map and Plan maintains two coastal districts.
 - University of California – San Diego (UCSD) was a point of contention for the community. Students and community groups provided testimony to request that UCSD and University City be moved to District 6. There were other District 1 residents and community groups who requested little to no changes to the 2011 District 1 boundaries.
 - The Commission decided to keep UCSD in District 1 to keep the district compact and contiguous. However, the Commission moved University City to District 6 in response to public testimony that a number of UCSD students live in northern

University City and wanted to move to District 6 given their ties to the communities there and to increase the Asian population in District 6 to 40%.

- The Commission kept ~~most of~~ Carmel Valley and Torrey Hills in District 1 based on their shared common interests, including schools, places of worship, and recreation areas-but moved the southern portion and Torrey Hills to District 6 to balance population. To keep all of Torrey Hills in District 1, it was necessary to include a portion of the Los Peñasquitos Canyon Preserve Community Planning Area in this district.
- The Commission decided to move the coastal communities of La Jolla and Pacific Beach into the same district based on their common interests and concerns, including traffic, beaches and bays, tourism, and environmental issues including sea level rise and to balance population.
- The Commission decided to move the portion of Torrey Highlands in the 92130 zip code to District 1 because of that community's shared interests with Carmel Valley and to balance population.
- The district is geographically compact to the extent possible while balancing other criteria and community of interest boundaries. The district does not bypass population unless required to unite communities of interest or otherwise achieve other criteria.

DISTRICT 2

- Community Planning Areas
 - Clairemont Mesa
 - Midway-Pacific Highway
 - Mission Bay Park
 - Mission Beach
 - Ocean Beach
 - Old Town San Diego
 - Peninsula
- Neighborhoods
 - Bay Ho
 - Bay Park
 - Clairemont Mesa East
 - Clairemont Mesa West
 - La Playa
 - Loma Portal
 - Midtown (partial – portion west of Interstate 5)
 - Midway District
 - Mission Bay
 - Mission Beach
 - Mission Hills (partial – portion west of Interstate 5)
 - Ocean Beach
 - Old Town
 - North Clairemont

- ~~Pacific Beach (partial—southern portion adjacent to Mission Bay)~~
- Point Loma Heights
- Roseville/Fleet Ridge
- Sunset Cliffs
- Wooded Area
- Demographics
 - Total population: 149,880~~363~~
 - Deviation: ~~-2.953.28%~~ (-4,5535,070 people)
 - Historical: Approximately 65.74% of the population to be included in the new District 2 is presently included in the current District 2.
- Contiguity

The district is geographically contiguous. Bay Ho, Bay Park, Mission Bay, ~~Old Town~~, Midway District, and San Diego Airport are connected by Interstate 5. Balboa Avenue is a connection point for Clairemont Mesa East, Clairemont Mesa West, Bay Park, and Bay Ho. North Clairemont and Clairemont Mesa East are connected by Interstate 805. Nimitz Boulevard, Midway Drive, Rosecrans Street, and Catalina Boulevard are major connecting streets.
- Findings and Reasons for Adoption
 - Per the 2020 census data, District 2, as currently drawn, started out having a population of 149,985 and was under the ideal district size with a deviation of -2.88%.
 - ~~Theis Final m~~Map and Plan maintains two coastal districts.
 - Pursuant to requests from the community, the Clairemont communities were reunited into one district given their common interests.
 - The Morena area was moved from District 2 to District 7 to unite Linda Vista into a single district.
 - The coastal communities of Ocean Beach ~~and~~, Mission Beach, ~~Pacific Beach~~, as well as the peninsula of Point Loma remain in District 2. These areas share common issues, including concern for their beaches and bays, tourism, environmental issues including sea level rise, traffic, noise, and pollution impacts from the San Diego Airport, which also remains in the district.
 - Bay Ho and Bay Park were kept in District 2 due to the proximity, recreational opportunities, and views related to Mission Bay.
 - The Commission included the Pacific Highway Corridor in District 2 because of its inclusion in the Midway Pacific Highway Community Planning Area, its connectivity to adjacent areas in District 2, and its physical isolation from the communities in District 3. This area has also historically been used for industrial purposes, but is now being used for many airport-related commercial activities, including parking and car rental agencies that serve the airport in this district. Portions of the Pacific Highway Corridor, along with the majority of District 2, are located in the Coastal Zone established by the California Coastal Act.
 - Old Town was moved to District 2 to balance population and because of shared interests with the Midway District.

- The district is geographically compact to the extent possible while balancing the other criteria and community of interest boundaries. The district does not bypass population unless required to unite communities of interest or otherwise achieve other criteria.

DISTRICT 3

- Community Planning Areas
 - Balboa Park
 - Centre City/Downtown (excluding 10th Avenue terminal)
 - Greater Golden Hill
 - North Park
 - Mission Valley (partial – southern portion)
 - ~~Old Town San Diego~~
 - Uptown
- Neighborhoods
 - Azalea/Hollywood Park (partial – sliver at Interstate 15)
 - Balboa Park
 - Bankers Hill
 - Burlingame
 - Castle (partial – sliver west of Interstate 805)
 - Cherokee Point (partial – sliver west of Interstate 805)
 - Core-Columbia
 - Cortez Hill
 - East Village
 - Gaslamp Quarter
 - Golden Hill
 - Grant Hill (partial – portion north of State Route 94)
 - Harbor View
 - Hillcrest
 - Horton Plaza
 - Little Italy
 - Marina
 - Midtown (partial – portion east of Interstate 5)
 - Mission Hills (partial – portion east of Interstate 5)
 - Mission Valley East (partial – southern portion)
 - Mission Valley West
 - North Park
 - Old Town (partial – portion outside of Community Planning Area)
 - Park West
 - Petco Park
 - Sherman Heights (partial – portion north of State Route 94)
 - South Park
 - Stockton (partial – portion north of State Route 94)
 - University Heights

- Demographics
 - Total population: 153,779.037
 - Deviation: $\pm 0.4239\%$ (± 6504 people)
 - Historical: Approximately 94.2% of the population to be included in the new District 3 is presently included in the current District 3.
- Contiguity

The district is geographically contiguous. There is reasonable access between population centers in the district. ~~Old Town~~, Mission Hills, Park West, Bankers Hill, Balboa Park, and Golden Hill are accessible by Interstate 5. University Heights, Hillcrest, Balboa Park, Downtown and Mission Valley are accessible by State Route 163 (Cabrillo Freeway). Hillcrest is connected to University Heights by University Avenue. North Park is connected to the South Park and Golden Hill areas by Interstate 805 and Interstate 15. Mission Valley is connected to University Heights by Interstate 805 and Texas Street. Broadway and B Street connect the Downtown area to San Diego City College and Golden Hill.
- Findings and Reasons for Adoption
 - Per the 2020 census data, District 3, as currently drawn, started out having a population of 161,448 and was over the ideal district size with a deviation of +4.54%.
 - Normal Heights and Adams North were moved from District 3 to District 9 to decrease the district's total population. Normal Heights was also moved so the neighborhood's Community Planning Group is within a single Council ~~D~~istrict.
 - A portion of Mission Valley was added to District 3 for population balance.
 - Balboa Park remains a major common interest of many of the neighborhoods in District 3 and was left intact.
 - The older, urban communities of character surrounding Balboa Park including Hillcrest, North Park, South Park, and Golden Hill remained in District 3.
 - With the exception of the 10th Avenue terminal, Downtown remained within a single district. The 10th Avenue terminal area was moved to District 8 at the requests of residents of Barrio Logan because of the traffic, environmental, and health impacts it has on the adjacent community of Barrio Logan. The total population of the 10th Avenue terminal area moved to District 8 was 86 people.
 - University Heights remained intact within a single Council district.
 - The LGBTQ (Lesbian-Gay-Bisexual-Transgender-Queer) community has historically had a large population residing south of Interstate 8 in communities represented by Council District 3. The district boundaries were drawn to respect and acknowledge this history and to provide fair representation for the LGBTQ community of interest.
 - The district is geographically compact to the extent possible while balancing the other criteria and community of interest boundaries. The district does not bypass population unless required to unite communities of interest or otherwise achieve other criteria.

DISTRICT 4

- Community Planning Areas
 - City Heights (partial – Ridgeview)
 - Eastern Area (partial – neighborhoods of Oak Park and Webster)
 - Encanto Neighborhoods
 - Skyline-Paradise Hills
 - Southeastern San Diego (partial – ~~portion of Mountain View~~~~portion east of Interstate 15, north of National Avenue and east of South 43rd Street~~)
- Neighborhoods
 - Alta Vista
 - Bay Terraces
 - Broadway Heights
 - Chollas View
 - Emerald Hills
 - Encanto
 - Jamacha
 - Lincoln Park
 - Lomita
 - ~~Mount Hope~~
 - Mountain View (~~partial – excluding northwestern portion~~)
 - Oak Park
 - O'Farrell
 - Paradise Hills
 - Ridgeview
 - Skyline
 - Valencia Park
 - Webster
- Demographics
 - Total population: ~~149,097~~~~57,198~~
 - Deviation: ~~-3.46~~~~+1.79~~% (~~-5,336~~~~2,085~~ people)
 - Historical: Approximately ~~91.98~~~~7.1~~% of the population to be included in the new District 4 is presently included in the current District 4.
- Contiguity

The district is geographically contiguous. There is reasonable access between population centers in the district. Broadway Heights, Emerald Hills, Ridgeview, and Webster are connected by State Route 94 (Martin Luther King, Jr. Freeway). North Encanto and Emerald Hills are connected by Akins Avenue. State Route 54 (South Bay Freeway) connects Bay Terraces South and Paradise Hills in the southern portion of District 4.
- Findings and Reasons for Adoption
 - Per the 2020 census data, District 4, as currently drawn, started out having a population of 145,708 and was under the ideal district size with a deviation of - 5.65%.
 - The Commission largely respected the current boundaries of District 4, consistent with public testimony advocating that the district be kept as close as possible to its

present boundaries, while recognizing that some communities that were historically part of District 4 and were moved to District 9 in the 2011 Plan requested to be moved back to District 4 and that this district needed to gain population.

- The Commission recognized that District 4 has a large, geographically compact Black population and that it has historically been a Black influence district. The Commission wished to draw a district that respected that history. The district also has a well-established community of interest surrounding its churches, schools, and neighborhoods. District 4's population in the Final Map and Plan will be is 15.6628% Black, 47.13877% Latino, and 22.213% Asian. The CVAP for this district in the Final Map and Plan is will be 21.9964% Black, 36.81784% Latino, and 22.59181% Asian.
- The Commission determined that the Ridgeview, ~~Mount Hope~~, and Mountain View communities should be included in District 4, consistent with public testimony on the interests of those communities. Mount Hope and the northwestern portion of Mountain View were kept in District 9 to increase the Latino population and CVAP in that district.
- Natural boundaries for the district include the City's boundaries, Interstate 15, and State Route 94 (Martin Luther King, Jr. Freeway).
- The district is geographically compact to the extent possible while balancing the other criteria and community of interest boundaries. The district does not bypass population unless required to unite communities of interest or otherwise achieve other criteria.

DISTRICT 5

- Community Planning Areas
 - Black Mountain Ranch
 - Carmel Mountain Ranch
 - Del Mar Mesa (partial – eastern portion)
 - Miramar Ranch North
 - Rancho Bernardo
 - Rancho Peñasquitos
 - Sabre Springs
 - San Pasqual
 - Scripps Miramar Ranch (partial – portions east of Scripps Ranch Boulevard and south ~~north~~ and east of Pomerado Road, and excluding northeastern portion east of Pomerado Road)
 - Torrey Highlands (partial – excluding 92130 ~~portion east of Camino del Sur and north of Carmel Valley Road~~)
- Neighborhoods
 - Black Mountain Ranch
 - Carmel Mountain Ranch
 - Miramar Ranch North
 - Rancho Bernardo

- Rancho Peñasquitos ~~(partial—excluding portion that is in the Los Peñasquitos Canyon Community Plan Area and the westernmost portion that is in the Torrey Highlands Community Plan Area)~~
- Sabre Springs
- San Pasqual
- Scripps Ranch (partial – portions east of Scripps Ranch Boulevard and south north and east of Pomerado Road, and excluding northeastern portion east of Pomerado Road)
- Torrey Highlands (partial – excluding 92130 portion~~portion east of Camino del Sur and north of Carmel Valley Road~~)
- Demographics
 - Total population: 158,994~~1,981~~
 - Deviation: +2.95~~-1.59~~% (+4,561~~-2,452~~ people)
 - Historical: Approximately 93.23% of the population to be included in the new District 5 is presently included in the current District 5.
- Contiguity

The district is geographically contiguous. There is reasonable access between population centers in the district. San Pasqual, Rancho Bernardo, Carmel Mountain Ranch, Rancho Peñasquitos, Sabre Springs, Miramar Ranch North, and Scripps Ranch are connected north and south by Interstate 15. State Route 56 connects Torrey Highlands, Rancho Peñasquitos, Sabre Springs, and Carmel Mountain Ranch east and west.
- Findings and Reasons for Adoption
 - Per the 2020 census data, District 5, as currently drawn, started out having a population of 158,760 and was over the ideal district size with a deviation of +2.80%.
 - The Commission determined that the neighborhoods in this district share similar socioeconomic factors.
 - In accordance with public testimony, a group of neighborhoods was kept together based upon the community of interest formed by their inclusion in the Poway Unified School District. There was also public testimony requesting that Park Village be reunited with Rancho Peñasquitos and that Torrey Highlands be included in District 5, except for a portion which was moved to District 1.
 - The western boundary of District 5 was drawn in part to respect the desire of those who testified from District 1 that they wanted to keep coastal communities together. This decision to move the portion of Torrey Highlands in the 92130 zip code to District 1 and the southwestern portion of Scripps Ranch to District 6, was in part to balance population deviation, and achieve a 40% Asian population in District 6. Scripps Ranch schools are within the San Diego Unified School District, similar to other schools in District 6.
 - The Commission decided to split a census block in this district to move the preserve area in the Del Mar Mesa Preserve to District 1, but maintain the population in District 5 with the surrounding neighbors.
 - This district contains the northeastern most portion of the city.

- The Commission heard testimony that a number of the neighborhoods included in District 5 are affected by the threat of wildfires and share a common interest in that regard. Not all such neighborhoods could be included in District 5, however, ~~because~~ fire is an issue to more communities than can be included in one district, making it difficult to create a wildfire-affected district that is sufficiently compact.
- Natural boundaries include the City's North and East limits, the Interstate 15 corridor, and State Route 56. Interstate 15 is a significant central travel corridor that defines the district.
- The district is geographically compact to the extent possible, recognizing that the City's north and east boundaries have jagged lines and while balancing the other criteria and community of interest boundaries. The district does not bypass population unless required to equalize population.

DISTRICT 6

- Community Planning Areas
 - ~~East Elliott (partial—excluding southeast portion)~~
 - Kearny Mesa (partial – excluding portion ~~west~~ of State Route 163 and south of Balboa Avenue)
 - Los Peñasquitos Canyon Preserve (eastern portion, south of Rancho Peñasquitos)
 - Military Facilities
 - Mira Mesa
 - Rancho Encantada
 - Scripps Miramar Ranch (partial – portions west of Scripps Ranch Boulevard and south and northeast portion east of Pomerado Road)
 - ~~Torrey Hills (partial—excluding portion north of Carmel Mountain Road)~~
 - ~~Torrey Pines (partial—southern portion east of Interstate 5)~~
 - University (partial – portion east of Interstate 5)
- Neighborhoods
 - ~~Carmel Valley (partial—portion in the Los Peñasquitos Canyon Preserve Community Plan Area and portion in the Torrey Hills Community Plan Area that is west of El Camino Real and south of Carmel Mountain Road)~~
 - ~~East Elliott~~
 - Kearny Mesa (partial – excluding portion ~~west~~ of State Route 163 and south of Balboa Avenue)
 - Miramar
 - Mira Mesa
 - Rancho Encantada
 - Rancho Peñasquitos (partial – ~~southeastern~~ portion in the Los Peñasquitos Canyon Preserve Community Planning Area)
 - Scripps Ranch (partial – portions west of Scripps Ranch Boulevard and northeastern portion east ~~south and east~~ of Pomerado Road)
 - Sorrento Valley
 - ~~Torrey Hills~~
 - University City (partial – portion east of Interstate 5)

- Demographics
 - Total population: 152,273,326
 - Deviation: -1.40.07% (-2,160-107 people)
 - Historical: Approximately 60.056.5% of the population to be included in the new District 6 is presently included in the current District 6.
- Contiguity

The district is geographically contiguous to the extent practical. There is reasonable access between population centers in the district. Scripps Ranch, Mira Mesa, Miramar, and Kearny Mesa are connected north and south by Interstate 15 and transition to State Route 163. Sorrento Valley, Miramar, University City, and Kearny Mesa are connected by Interstate 805. ~~Torrey Hills~~, Sorrento Valley, and University City are connected north and south by Interstate 5. The neighborhood of Rancho Encantada is not entirely contiguous with other portions of District 6 because it is bordered by the City's limits to the north and to the south by a military base that is restricted from public access. Rancho Encantada has a population of 3404, 34.49% of which is Asian. The Commission's mapping consultant evaluated ways to make Rancho Encantada more contiguous with District 6 but was not able to find a practical solution that would make Rancho Encantada more contiguous with other portions of District 6 and also maintain a 40% Asian population in District 6. There was significant public comment throughout the redistricting process requesting that District 6 have a minimum Asian population of 40% to maintain that community of interest in the district. The Commission found that maintaining the 40% Asian population of the district greatly outweighs any unique and minor impacts related to the contiguity of the Rancho Encantada neighborhood.
- Findings and Reasons for Adoption
 - Per the 2020 census data, District 6, as currently drawn, started out having a population of 152,358 and was under the ideal district size with a deviation of -1.34%.
 - The Commission determined that there is a community of interest among the Asian population in this district that shares business interests, cultural activities, and social ties and concerns. The Asian population is sufficiently geographically compact to comprise 40.0839.43% of the district's population (the largest in the City) and a CVAP of 32.6544%. ~~Thus~~ combining neighborhoods to provide fair and effective representation to this community, insofar as practicable while balancing the Commission's other redistricting goals and adhering to redistricting law and principles, is an important goal of the Final Map and Plan.
 - In recognition of its cultural significance to the Asian community, the Commission decided to keep the Convoy District in District 6.
 - There was significant testimony from students attending the University of California – San Diego (UCSD) and other community members seeking to move UCSD and University City to this district; there was also testimony that University City should be kept whole and has a connection with UCSD and La Jolla. The Commission determined that the portion of University City east of

Interstate 5 should move to District 6 based on the students' requests and to achieve a 40% Asian population in this district.

- A common area of interest to many of the communities in this district is MCAS Miramar, referred to as Military Facilities. These communities include enlisted personnel and their families as well as social, business, and commercial interests surrounding MCAS Miramar.
- The Commission decided to move a portion of Scripps Ranch to District 6 to balance population. The Commission recognized that schools in Scripps Ranch are within the San Diego Unified School District, similar to other schools in District 6. The Commission determined that because of its large population, it was impractical to include all of University City in this district. Torrey Hills was added to this district to balance population.
- The district is geographically compact to the extent possible while balancing the other criteria and community of interest boundaries. The district does not bypass population unless required to unite communities of interest or otherwise achieve other criteria.

DISTRICT 7

- Community Planning Areas
 - East Elliott ~~(partial—southeast portion)~~
 - Kearny Mesa (partial – portion east of State Route 163 and south of Balboa Avenue)
 - Linda Vista
 - Mission Valley (partial —portion north and Friars Road and easternmost portion east of Interstate 15 and north of Interstate 8~~Birdland and Civita neighborhoods and portion of East Mission Valley east of Interstate 15 and north of Friars Road~~)
 - Navajo
 - Serra Mesa
 - Tierrasanta
- Neighborhoods
 - Allied Gardens
 - Birdland
 - Clairemont Mesa East (partial – southeastern sliver)
 - Del Cerro
 - Grantville (partial – excluding portion south of Interstate 8~~portion east of Mission Gorge Road and portion north of Friars Road~~)
 - Kearny Mesa (partial – portion east of State Route 163 and south of Balboa Avenue)
 - Lake Murray (East San Carlos)
 - Linda Vista
 - Mission Valley East (partial – portion east of Interstate ~~180~~5 and north of Friars Road)
 - Morena
 - San Carlos

- Serra Mesa (~~partial—excluding northwest corner west of State Route 163~~)
- Tierrasanta (partial – excludes the portion north of State Route 52)
- Demographics
 - Total population: 158,6307,253
 - Deviation: +2.721.83% (+4,1972,820 people)
 - Historical: Approximately 930.14% of the population to be included in the new District 7 is included in the current District 7.
- Contiguity

The district is geographically contiguous. There is reasonable access between population centers in the district. Kearny Mesa, Tierrasanta, Serra Mesa, and Grantville are connected north and south by Interstate 15. Morena, Linda Vista, and Grantville are connected east and west by Friars Road. Grantville, Allied Gardens, San Carlos, and Lake Murray are connected east and west by Friars Road/Mission Gorge Road. Navajo Road connects Allied Gardens, Del Cerro, and San Carlos. Tierrasanta, and Mission Trails Regional Park are connected east and west by State Route 52.
- Findings and Reasons for Adoption
 - Per the 2020 census data, District 7, as currently drawn, started out having a population of 159,500 and was over the ideal district size with a deviation of +3.28%.
 - The Commission determined that Mission Trails Regional Park and the communities that surround it, including Tierrasanta, Lake Murray, and San Carlos, form a community of interest based on their close connection to the park and should be kept together.
 - Linda Vista, Birdland, and Serra Mesa are located to the north of Mission Valley and share common issues related to the traffic feeding south to the developing areas of Mission Valley.
 - Tierrasanta and Navajo residents testified that they are also a community of interest, along with Allied Gardens, Del Cerro, San Carlos, and Grantville.
 - The public requested ~~the inclusion of Kearny Mesa east of State Route 163 was included in part due to testimony concerning keeping areas around the~~ Montgomery-Gibbs Executive Airport area in this one district given its impact on Serra Mesa. It also recognizes the interface between commercial and industrial development.
 - The district is geographically compact to the extent possible while balancing the other criteria and community of interest boundaries. The district does not bypass population unless required to unite communities of interest or otherwise achieve other redistricting criteria.

DISTRICT 8

- Community Planning Areas
 - Barrio Logan

- Downtown (portion south of Commercial Street and Park Boulevard)
- Military Facilities
- Otay Mesa
- Otay Mesa-Nestor
- San Ysidro
- Southeastern San Diego (~~excluding neighborhoods of Stockton, Mount Hope and Mountain View~~ portion west of Interstate 15, south of National Avenue and west of S. 43rd Street)
- Tijuana River Valley
- Neighborhoods
 - Barrio Logan
 - Border
 - Egger Highlands
 - Grant Hill
 - Logan Heights
 - Nestor
 - Ocean Crest
 - Otay Mesa
 - Otay Mesa West
 - Palm City
 - San Ysidro
 - Shelltown
 - Sherman Heights
 - Southcrest
 - ~~Stockton~~
 - Tijuana River Valley
- Demographics
 - Total population: 15~~2,075,397~~
 - Deviation: ~~-1.53+0.62%~~ (-2,358+964 people)
 - Historical: 96.0% of the population to be included in the new District 8 is presently included in the current District 8.
- Contiguity

The district is geographically contiguous to the extent possible because of the need to substantially equalize the population with other districts, which requires connecting population-and-to-connect population in the South Bay to population in the north. There is reasonable access between population centers in the district. Grant Hill, Logan Heights, Barrio Logan, Shelltown, Otay Mesa-Nestor, and the Tijuana River Valley are connected north and south by Interstate 5. Otay Mesa-Nestor and Otay Mesa are connected north and south by Interstate 805 and east and west by State Route 905.
- Findings and Reasons for Adoption
 - Per the 2020 census data, District 8, as currently drawn, started out having a population of 149,314 and was under the ideal district size with a deviation of -3.32%.

- The Commission recognized that this district has very unique geography, which drives the district boundaries. The configuration requires that the South Bay be connected to communities to the north through a bay corridor under San Diego Bay, as historically has been the case. The district is geographically compact to the extent possible. It must bypass population of other cities to reach from the southern portion to the northern portion of the district.
- The Commission left the South Bay portion of the existing district intact. The Commission did not wish to fragment or dilute the Latino population and voting population and recognized and wished to respect the fact that this is a geographically compact population that is sufficiently large to form a majority-minority Latino Council District, as it has for many years. The new District 8 will include a population that is 75.669% Latino, 9.342% White, 4.576% Black, and 7.4343% Asian. The CVAP of the district is 67.32% Latino.
- The Commission also determined that the South Bay communities should remain together in one district because of common socioeconomic ~~factors~~ ~~data~~ and communities of interest.
- In order to balance the population, the Commission joined the South Bay with a portion of the City to the north and included Shelltown. In response to community testimony, the neighborhood of Southcrest was added to District 8 from its current location in District 9.
- The Commission wished to keep the Historic Barrio District together, including Barrio Logan, Sherman Heights, Logan Heights, Grant Hill, ~~Stockton~~, and Memorial. The Commission moved Stockton to District 9 to increase the Latino CVAP population in that district. The proposed District 8's boundaries in the Final Map and Plan also reflects the Commission's intent ~~an intention~~ not to connect these communities with the Downtown business and commercial interests, with the exception of the 10th Avenue terminal because ~~those~~ ~~their~~ interests are not the same as those of the Historic Barrio District. At th ~~The~~ community's ~~also request~~ ed the Commission also included that part of the Downtown Community Planning Area around the 10th Avenue terminal ~~be included~~ in District 8, due to the traffic, pollution, and related environmental impacts on Barrio Logan.
- Natural boundaries include State Route 94 and the City limits.
- The San Diego Bay corridor between Imperial Beach and Chula Vista connects the southern and northern part of the district.

DISTRICT 9

- Community Planning Areas
 - City Heights (partial – excludes Ridgeview neighborhood)
 - College Area
 - Eastern Area (partial – neighborhoods of Rolando, Rolando Park, Redwood Village, and El Cerrito)
 - Kensington-Talmadge
 - Mission Valley (partial – portion east of Interstate 805 and south of Friars Road)

- Normal Heights
- Southeastern San Diego (partial – neighborhood of Mount Hope, Stockton and northwestern portion of Mountain View)
- Neighborhoods
 - Adams North
 - Azalea/Hollywood Park
 - Castle
 - Cherokee Point
 - Chollas Creek
 - Colina del Sol
 - College East
 - College West
 - Corridor
 - El Cerrito
 - Fairmont Park
 - Fairmont Village
 - Fox Canyon
 - Grantville (partial – western and southwestern portion)
 - Islenair
 - Kensington
 - Mission Valley East (partial – portion east of Interstate 805 and south of Friars Road)
 - Mount Hope
 - Mountain View (partial – northwestern portion)
 - Normal Heights
 - Qualcomm
 - Redwood Village
 - Rolando
 - Rolando Park
 - Swan Canyon
 - Stockton
 - Talmadge
 - Teralta East
 - Teralta West
- Demographics
 - Total population: ~~158,320~~158,320~~1,713~~
 - Deviation: ~~+2.52~~+2.52~~-1.76~~-1.76% (~~+3,887~~+3,887~~-2,720~~ people)
 - Historical: ~~8079.09~~8079.09% of the population to be included in the new District 9 is presently included in City Council District 9.
- Contiguity

The district is geographically contiguous. There is reasonable access between population centers in the district. Adams North, Normal Heights, Kensington, Corridor, Teralta West, Cherokee Point, Castle, Azalea/Hollywood Park, ~~and~~ Fairmont Park, Mount Hope, Stockton, and Mountain View are connected north and

south by Interstate 15. Normal Heights, Corridor, Kensington, Talmadge, Colina del Sol, College East, College West, Teralta East, Teralta West, El Cerrito, Rolando, Rolando Park and Redwood Village are connected east and west by El Cajon Boulevard and University Avenue

- Findings and Reasons for Adoption

- Per the 2020 census data, District 9, as currently drawn, started out having a population of 146,204 and was under the ideal district size with a deviation of - 5.33%.
- The Commission heard testimony concerning keeping neighborhoods along University Avenue and El Cajon Boulevard east of Interstate 805 together as much as possible, with residents of these neighborhoods stating they formed a cCommunity of interest along those corridors.
- The Commission moved the Normal Heights Community Planning Area from District 3 to District 9. Testimony from residents of this area requested that the Community Planning Area be kept intact, either in District 3 or District 9. Because District 3 was the only district out of Districts 3, 4, 8, and 9 south of Interstate 8 that was above the target district size population, the move helped to balance populations among the four districts and reduce the total deviation of the Preliminary Map. This area is also wholly east of Interstate 805, creating a distinct erete boundary between District 3 and District 9, using the Interstate as the demarcation line.
- The district has a large population of immigrants, from many parts of the world, including Latin America, East Africa, and Southeast Asia, presenting unique needs and interests in the community. The district also has a large number of low-income residents, kept together with the new immigrants because of their shared economic interests, including affordable housing, jobs, economic development, access to facilities like parks and libraries, and transit.
- The Commission considered the shared impacts of San Diego State University on surrounding areas to the south, including the university's impacts on traffic and housing, and included those communities. Accordingly, the Qualcomm neighborhood north of Interstate 8 was added to District 9 from existing District 7, as it is the location of a new SDSU development that will include sports facilities, businesses, and student and faculty housing.
- This new district moves Rolando Park and Redwood Village to District 9 at the request of these residents of those neighborhoods.
- Natural boundaries include Interstate 8 partially, Interstate 805, the city limits and part of Highway 94.
- The district includes a majority-minority Latino population, representing 43.540.25% of the total population. The district remains diverse in ethnicity, with a large Latino population as well as significant Black and Asian populations. The new district's population is 43.540.25% Latino; 28.1030.3% White; 10.0922% Black; and 12.853.5% Asian, compared with its current population of 48.2% Latino, 23.7% White, 10.4% Black, and 12.8% Asian. The Latino CVAP for this new district is 30.5728.63% compared with the current Latino CVAP of 35.0%.

- The reduction in the proportion of the Latino population was in part due to the need to add population to the district, which currently has the smallest population of the nine City Council districts. As has already been stated, the populations of Districts 9, 4, and 8, as currently drawn, were all significantly below the target district size of 154,433. District 4 is bounded by District 9 to its north and District 8 to its west, so in order to increase District 4's population, the Commission was forced it needed to add adjacent neighborhoods from District 9, ~~which in turn needed to~~ This further required increase its the Commission to bolster the now reduced population of District 9 by extending its boundaries west to Normal Heights and ~~n~~North to Mission Valley. These moves changed the population composition of District 9, although it remains a majority-minority district because— the Latino population in the areas contiguous to current District 9 has decreased since the previous census. The Commission moved Stockton from District 8 to District 9 and Mount Hope and a portion of Mountain View were kept in District 9 to increase the Latino population and CVAP in this district as much as possible.
- The district is geographically compact to the extent possible while balancing the other criteria and community of interest boundaries.

VOTE ON THE ~~FINAL PRELIMINARY~~ PLAN AND UPCOMING HEARINGS

The vote of the Commissioners to approve on the Preliminary Map and Plan on November 13, 2021 was 7-2.

The vote of the Commissioners on the Final Map and Plan on December 15, 2021 was as follows:

- Voting "yes" for the Final Map and Preliminary Plan as submitted: Commissioners [include Commissioner names]
- Voting "no" for the Final Map and Preliminary Plan as submitted: Commissioners [include Commissioner names]

The Final Map and Plan is approved.

EFFECTIVE DATE OF FINAL MAP AND PLAN

~~In accordance with the requirements of the Charter, the Redistricting Commission will now convene five public hearings in the 30 days after the filing of this Plan and before a Final Redistricting Plan is adopted by the Commission. The Redistricting Commission may make changes to this Preliminary Plan and filing statement or may adopt it as is.~~ The Final Redistricting Map and Plan shall be effective 30 days after adoption and shall be subject to the right of referendum in the same manner as are ordinances of the City Council. If rejected by referendum, the same Redistricting Commission shall create a new plan pursuant to the criteria set forth in Sections 5 and 5.1 of the Charter.

The members of the City of San Diego 2020 Redistricting Commission thank the public for its participation and appreciate the public comment from the many residents of the City of San Diego who participated in the redistricting process.

Respectfully submitted,

Thomas Hebrank

Chair of the City of San Diego 2020 Redistricting Commission

On 2020 Redistricting Commission:

Val Hoy

Frederick W. Kosmo, Jr.

Roy MacPhail

Ken Malbrough

Alan Nevin

Justine Nielsen

Monica Hernandez

Thomas Hebrank

Kristen Roberts

**~~FINAL~~PRELIMINARY REDISTRICTING PLAN COMMUNITY
PLANNING AREAS AND NEIGHBORHOODS BY DISTRICT**

—DISTRICT 1—

Community Planning Areas

Carmel Valley
Del Mar Mesa
Fairbanks Ranch Country Club
La Jolla
Los Peñasquitos Canyon Preserve (partial – western portion)
Mission Bay Park (partial – portion that includes Pacific Beach neighborhood)
NCCUA Subarea II
Pacific Beach
Pacific Highlands Ranch
Torrey Highlands (partial – 92130 portion only)
Torrey Hills (partial – portion north of Carmel Mountain Road)
Torrey Pines (partial – excluding southern portion east of Interstate 5)
University City (partial – portion weas of Interstate 5)
Via de la Valle

Neighborhoods

Carmel Valley
Del Mar Heights
La Jolla
North City
Pacific Beach (partial – portion north of Grand Avenue, Crown Point Drive, and Riviera Drive)
Sorrento Valley (partial – portion that is in the Torrey Pines Community Planning Area)
Rancho Peñasquitos (partial – eastern portion)
Torrey Highlands (partial – 92130 portion)
Torrey Pines
Torrey Preserve

—DISTRICT 2—

Community Planning Areas

Clairemont Mesa
Midway-Pacific Highway
Mission Bay Park
Mission Beach
Ocean Beach
Old Town San Diego
Peninsula

Neighborhoods

Bay Ho
Bay Park
Clairemont Mesa East
Clairemont Mesa West
La Playa
Loma Portal
Midtown (partial – portion west of Interstate 5)
Midway District
Mission Beach
Mission Hills (partial – portion west of Interstate 5)
Ocean Beach

Old Town

North Clairemont

~~Pacific Beach (partial – southern portion
adjacent to Mission Bay)~~

Point Loma Heights

Roseville/Fleet Ridge

Sunset Cliffs

Wooded Area

**FINAL~~PRELIMINARY~~ REDISTRICTING PLAN COMMUNITY
PLANNING AREAS AND NEIGHBORHOODS BY DISTRICT**

—DISTRICT 3—

Community Planning Areas

Balboa Park
Centre City/Downtown (excluding 10th
Avenue terminal)
Greater Golden Hill
North Park
Mission Valley (partial- southern
portion)
~~Old Town San Diego~~
Uptown

Neighborhoods

Azalea/Hollywood
Park (partial – sliver
at Interstate 15)

Balboa Park
Bankers Hill
Burlingame
Castle (partial –
sliver west of
Interstate 805)
Cherokee Point
(partial – sliver west
of Interstate 805)

Core-Columbia
Cortez Hill
East Village
Gaslamp Quarter
Golden Hill
Grant Hill (partial –
portion north of State
Route 94)
Harbor View
Hillcrest
Horton Plaza

Midtown (partial – portion
east of Interstate 5)
Mission Hills (partial –
portion east of Interstate 5)
Mission Valley East (partial –
southern portion)
Mission Valley West
North Park
~~Old Town~~
Park West
Petco Park
Sherman Heights (partial –
portion north of State Route
94)
South Park
Stockton (partial – portion
north of State Route 94)
University Heights

Little Italy
Marina

—DISTRICT 4—

Community Planning Areas

City Heights (partial – Ridgeview
neighborhood)
Eastern Area (partial – neighborhoods
of Oak Park and Webster)
Encanto Neighborhoods
Skyline-Paradise Hills
Southeastern San Diego (partial –
~~portion of Mountain View~~~~portion east of~~
~~Interstate 15, north of National Avenue~~
~~and east of South 43rd Street~~)

Neighborhoods

Alta Vista
Bay Terraces
Broadway Heights
Chollas View
Emerald Hills
Encanto
Jamacha

Lincoln Park
Lomita

~~Mount Hope~~
Mountain View
~~(partial – excluding~~
~~northwestern portion)~~
Oak Park
~~O'Farrell~~
Paradise Hills
Ridgeview
Skyline
Valencia Park

**~~FINAL~~PRELIMINARY REDISTRICTING PLAN COMMUNITY
PLANNING AREAS AND NEIGHBORHOODS BY DISTRICT**

—DISTRICT 5—

Community Planning Areas

Black Mountain Ranch
~~Del Mar Mesa (partial – eastern portion)~~
Carmel Mountain Ranch
Miramar Ranch North
Rancho Bernardo
Rancho Peñasquitos
~~Sabre Springs~~
San Pasqual
Scripps Miramar Ranch (partial – portions
~~east of Scripps Ranch Boulevard and south~~
~~north~~ and east of Pomerado Road, ~~and~~
~~excluding northeastern portion east of~~
~~Pomerado Road~~)
Torrey Highlands (partial – ~~excluding 92130~~
~~portionportion east of Camino del Sur and~~
~~north of Carmel Valley Road~~)

Neighborhoods

~~Black Mountain Ranch~~
Carmel Mountain Ranch
Miramar Ranch North
Rancho Bernardo
Rancho Peñasquitos (~~partial—excluding portion~~
~~that is in the Los Peñasquitos Canyon~~
~~Community Plan Area and the westernmost~~
~~portion that is in the Torrey Highlands~~
~~Community Plan Area~~)
Sabre Springs
San Pasqual
Scripps Ranch (partial – portions ~~east of Scripps~~
~~Ranch Boulevard and south~~ ~~north~~ and east of
Pomerado Road, ~~and excluding northeastern~~
~~portion east of Pomerado Road~~)
Torrey Highlands (partial – ~~excluding 92130~~
~~portionportion east of Camino del Sur and north~~
~~of Carmel Valley Road~~)

—DISTRICT 6—

Community Planning Areas

~~East Elliott (partial—excluding southeast~~
~~portion)~~
Kearny Mesa (partial ~~— excluding portion~~
~~east of State Route 163 and south of Balboa~~
~~Avenue portion west of State Route 163~~)
Los Peñasquitos Canyon Preserve (~~eastern~~
~~portion, south of Rancho Peñasquitos~~)
Military Facilities
Mira Mesa
Rancho Encantada
Scripps Miramar Ranch (partial – portions
~~west of Scripps Ranch Boulevard and~~
~~northeastern portion~~ ~~south and~~ east of
Pomerado Road)
~~Torrey Hills (partial—excluding portion north~~
~~of Carmel Mountain Road)~~

Neighborhoods

~~Carmel Valley (partial—portion in the Los~~
~~Peñasquitos Canyon Preserve Community Plan~~
~~Area and portion in the Torrey Hills~~
~~Community Plan Area that is west of El~~
~~Camino Real and south of Carmel Mountain~~
~~Road)~~
~~East Elliott~~
Kearny Mesa (partial – ~~excluding portion east~~
~~of State Route 163 and south of Balboa~~
~~Avenueportion to the west of State Route 163~~)
Miramar
Mira Mesa
Rancho Encantada
Rancho Peñasquitos (partial – ~~southeastern~~
~~portion in the Los Peñasquitos Canyon~~
~~Preserve Community Planning Area~~)

~~Torrey Pines (partial—southern portion east of Interstate 5)~~

University City (partial— portion east of Interstate 5)

Scripps Ranch (partial – portions ~~s west of Scripps Ranch Boulevard and northeastern portion-south and~~ east of Pomerado Road)

Sorrento Valley

~~Torrey Hills~~

University City (partial – portion east of Interstate 5)

~~FINAL~~PRELIMINARY REDISTRICTING PLAN COMMUNITY PLANNING AREAS AND NEIGHBORHOODS BY DISTRICT

—DISTRICT 7—

Community Planning Areas

East Elliott (~~partial—southeast portion~~)

Kearny Mesa (partial – portion east of State Route 163 ~~and south of Balboa Avenue~~)

Linda Vista

Mission Valley (partial – ~~portion north and Friars Road and easternmost portion east of Interstate 15 and north of Interstate 8~~~~Birdland and Civita neighborhoods and portion of East Mission Valley east of Interstate 15 and north of Friars Road~~)

Navajo

Serra Mesa

Tierrasanta

Neighborhoods

Allied Gardens

Birdland

~~Clairemont Mesa East (partial – southeastern sliver)~~

Del Cerro

Grantville (partial – ~~excluding portion south of Interstate 8~~~~portion east of Mission Gorge Road and portion north of Friars Road~~)

~~Kearny Mesa (partial – portion east of State Route 163 and south of Balboa Avenue)~~

Lake Murray (East San Carlos)

Linda Vista

Mission Valley East (partial – portion east of Interstate ~~4~~805 and north of Friars Road)

Morena

San Carlos

Serra Mesa (~~partial—excluding northwest corner west of State Route 163~~)

Tierrasanta (partial – excludes the portion north of State Route 52)

—DISTRICT 8—

Community Planning Areas

Barrio Logan

Downtown (partial – portion south of Commercial Street and Park Boulevard)

Otay Mesa

Otay Mesa-Nestor

Neighborhoods

Barrio Logan

Border

Egger Highlands

Grant Hill

Logan Heights

Otay Mesa

Otay Mesa West

Palm City

San Ysidro

San Ysidro
Southeastern San Diego (excluding
neighborhoods of Stockton, Mount Hope and
Mountain View~~partial — portion west of~~
~~Interstate 15, south of National Avenue and~~
~~west of S. 43rd Street~~)
Tijuana River Valley

Nestor
Ocean Crest

Shelltown
Sherman Heights
Southcrest
~~Stockton~~
Tijuana River Valley

DRAFT

**~~PRELIMINARY~~FINAL REDISTRICTING PLAN COMMUNITY
PLANNING AREAS AND NEIGHBORHOODS BY DISTRICT**

—DISTRICT 9—

Community Planning Areas

City Heights (partial – excludes the
Ridgeview neighborhood)
College Area
Eastern Area
(partial – neighborhoods of Rolando,
Rolando Park, Redwood Village, and El
Cerrito)
Kensington-Talmadge
Mission Valley (partial – portion east of
Interstate 805 and south of Friars Road)
Normal Heights
Southeastern San Diego (partial –
neighborhood of Stockton, Mount Hope,
and northwestern portion of Mountain
View)

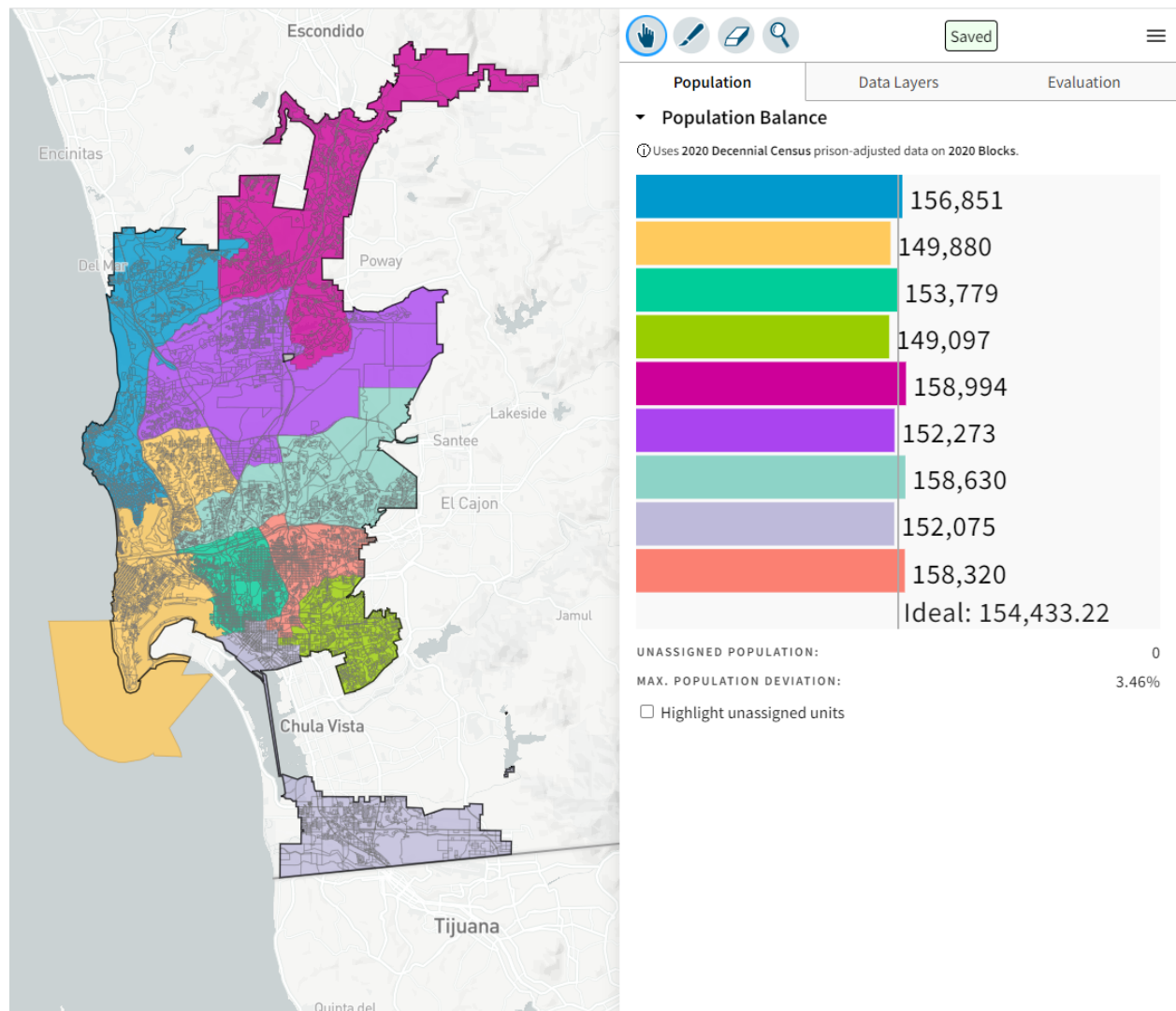
Neighborhoods

Adams North
Azalea
Castle
Cherokee Point
Chollas Creek
Colina del Sol
College East
College West
Corridor
El Cerrito
Fairmont Park
Fairmont Village
Fox Canyon
Grantville (partial –
western and southwestern
portion)
Hollywood Park
Islenair
Kensington
Mission Valley East
(partial – portion east of
Interstate 805 and south of
Friars Road)
Mount Hope
Mountain View (partial –
northwestern portion)
Normal Heights
Qualcomm
Redwood Village
Rolando
Rolando Park
Swan Canyon
Stockton
Talmadge
Teralta East
Teralta West

Map 92973 -- Cleaning Four Splits

Link to map:

<https://districtr.org/plan/92973>



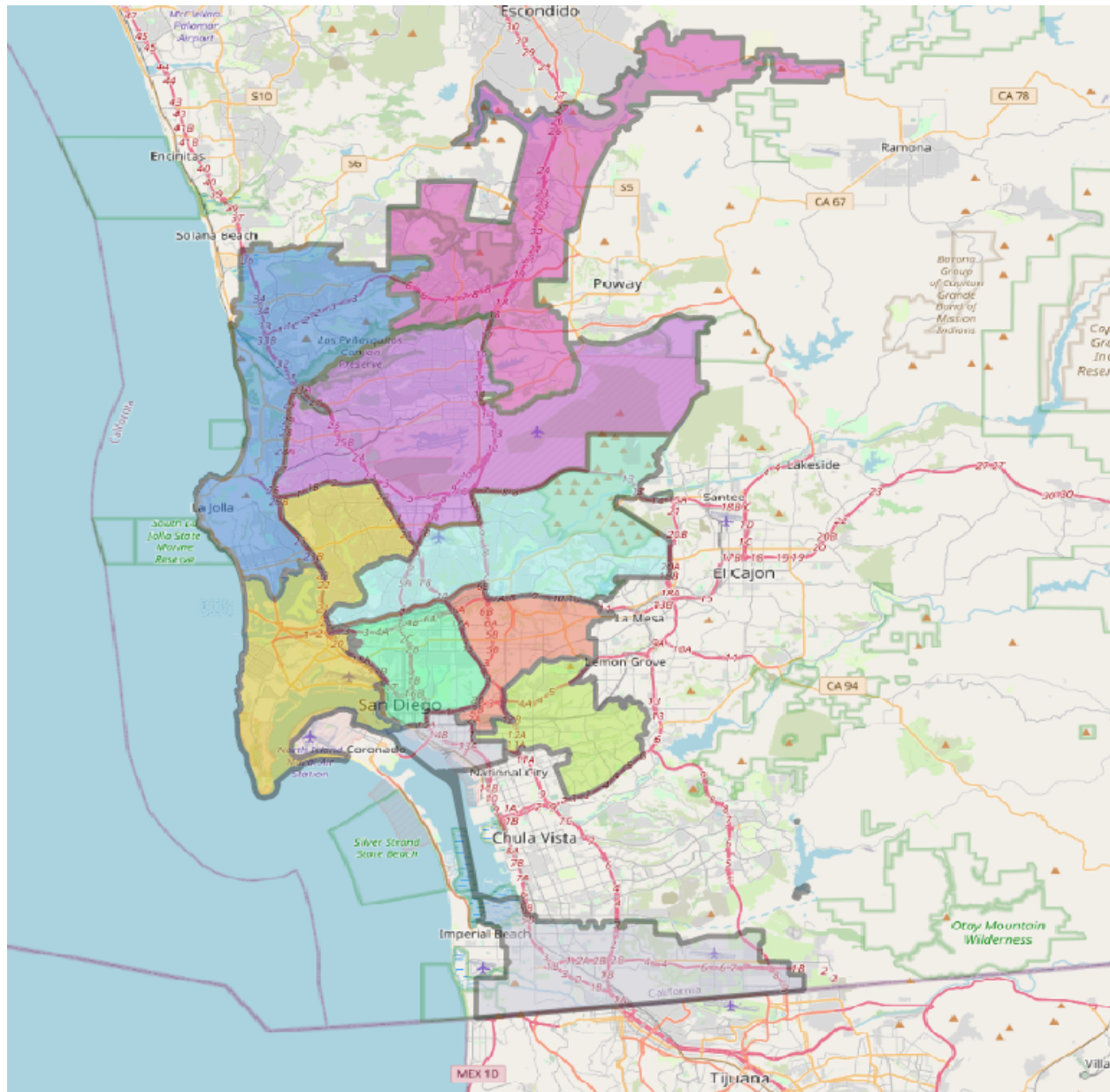
Methodology

Haystaq was directed to clean up several splits by the commission on 12/9/2021. This modified map 91107. It includes the changes below.


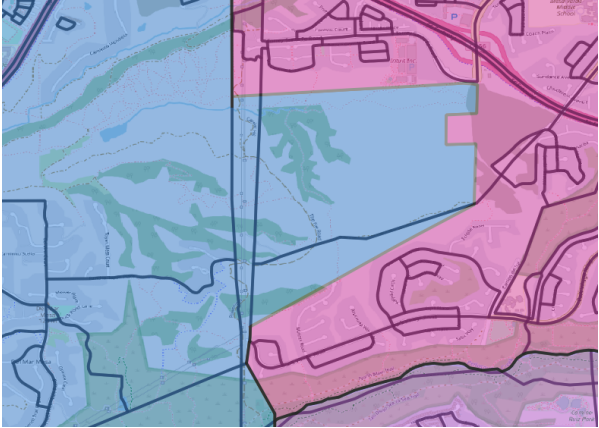
NOTE1: Districtr, the mapping platform, does not allow the splitting of census blocks, but a previous change to split a block to keep the Del Mar Mesa Preserve is reflected in the .shp file image below and will be reflected in the final map.

NOTE2: There are a number of small or 0 population splits that could not be remedied either because the split itself was approved by the commission or because the split represents a conflict between Neighborhood and Community Planning Association Lines.

Image from the Shape File Rendition of plan 92973 (with the Del Mar Preserve Modification):



Change to the underlying .shp file to split census blocks 060730083663008 and 060730083661006 to separated Del Mar Mesa Preserve from the Torrey Highlands Population -- 0 Population change

Image from Districtr	Image of Modified .shp file
 <p>This map shows a geographical area with a prominent blue region on the left and a pink region on the right. The pink region is labeled 'TORREY HIGHLANDS' at the top. The map is relatively simple, with few details and some yellow text in the bottom left corner.</p>	 <p>This map is a more detailed version of the one on the left. It shows the same blue and pink regions, but the pink region is now split into two distinct areas by a vertical line. The map includes more details such as roads, water bodies, and various colored regions (blue, green, pink, brown). The text 'TORREY HIGHLANDS' is also present at the top.</p>

Population and Deviation

District	Total Population	Raw Deviation	% Deviation
1	156,851	2,418	1.57%
2	149,880	(4,553)	-2.95%
3	153,779	(654)	-0.42%
4	149,097	(5,336)	-3.46%
5	158,994	4,561	2.95%
6	152,273	(2,160)	-1.40%
7	158,630	4,197	2.72%
8	152,075	(2,358)	-1.53%
9	158,320	3,887	2.52%
Tot Pop	1,389,899	Deviation	6.41%
Ideal	154,433.22		

Population Percentage Total

District	%Latino	%Asian	%Black	% White	% AIAN, Hawaiian & PI, Other, 2+ Races
1	11.31%	18.19%	1.28%	62.24%	6.97%
2	19.63%	7.56%	3.11%	61.82%	7.88%
3	23.54%	7.09%	5.58%	56.81%	6.98%
4	47.13%	22.20%	15.66%	9.93%	5.08%
5	10.81%	29.27%	1.98%	50.49%	7.45%
6	14.49%	40.08%	3.23%	35.23%	6.97%
7	22.28%	12.89%	5.77%	50.78%	8.28%
8	75.66%	7.43%	4.57%	9.34%	3.00%
9	43.54%	12.85%	10.09%	28.10%	5.41%

Population Percentage VAP

District	VAP % Latino	VAP % Asian	VAP % Black	VAP % White	VAP % AIAN, Hawaiian & PI, Other, 2+ Races
1	10.61%	17.32%	1.35%	65.10%	5.63%
2	17.88%	8.05%	3.11%	64.13%	6.82%
3	21.82%	7.48%	5.53%	58.87%	6.30%
4	43.79%	24.34%	16.22%	11.21%	4.45%
5	9.63%	29.08%	2.07%	53.66%	5.57%
6	13.40%	40.74%	3.31%	36.92%	5.63%
7	20.02%	13.95%	5.59%	53.64%	6.80%
8	72.82%	8.44%	5.00%	10.91%	2.83%
9	39.80%	13.57%	9.52%	31.89%	5.23%

Population Percentage CVAP

District	CVAP % Latino	CVAP % Asian	CVAP % Black	CVAP % White	CVAP % AIAN, Hawaiian & PI, Other, 2+ Races
1	9.41%	11.91%	1.40%	74.03%	3.24%
2	15.08%	7.86%	3.75%	69.99%	3.32%
3	19.73%	5.67%	6.39%	64.83%	3.38%
4	36.81%	22.59%	21.99%	14.47%	4.13%
5	9.32%	22.21%	2.23%	61.95%	4.30%
6	13.40%	32.65%	3.86%	44.79%	5.31%
7	17.30%	11.87%	5.83%	61.18%	3.83%
8	67.32%	9.68%	6.19%	14.14%	2.67%
9	30.57%	13.08%	11.59%	41.10%	3.66%

Citywide Population

San Diego City Wide Populations					
	%Latino	%Asian	%Black	% White	% AIAN, Hawaiian & PI, Other, 2+ Races
Tot Pop	29.66%	17.52%	5.67%	40.69%	6.46%
VAP	27.13%	17.98%	5.63%	43.73%	5.52%
CVAP	23.32%	14.91%	6.82%	51.21%	3.75%

Compactness

[Understanding Compactness](#)

Note: this Compactness table was created on the modified .shp file

District	Perimeter	Area_Sq_Mi	Polsby Popper	Schwartzberg	Convex Hull	Reock
1	56.4	43	0.1706	0.413	0.5741	0.2505
2	56.5	41	0.1598	0.3997	0.6675	0.2937
3	23.5	15	0.3508	0.5923	0.8398	0.5568
4	27.6	17	0.2859	0.5347	0.7648	0.6104
5	94.9	60	0.0835	0.2889	0.427	0.2184
6	59.9	71	0.2486	0.4986	0.7349	0.3354
7	46	42	0.247	0.497	0.7413	0.272
8	62	38	0.124	0.3522	0.3028	0.1546
9	24.3	15	0.3189	0.5647	0.6421	0.3925
Avg			0.2210	0.4601	0.6327	0.3427

Splits Summary

Community Planning Areas		Neighborhoods	
Split across number of districts	Number of CPAs	Split across number of districts	Number of NEIGHBORHOODs
1	42	1	98
2	14	2	25
3	3	3	2

How to Read Map Reports

Full reports from the Haystaq-created draft maps, as well as community-submitted district plans (through 10/12) can be found on the city website as Excel files. These reports were created by proprietary python code written by HaystaqDNA. Here is a basic primer on the components/tabs of these reports:

Maps:

These are just images from the city's Districtr hosted website of each map.

Populations:

When we create a plan or export a plan from Districtr, we export it as a 'block equivalency file'. Basically the U.S. Census divided all of the geography of the City of San Diego up into 'blocks'. At its most basic, a block can correspond to a city block, but the census will also use permanent geographic features (a waterway, a canyon, a ridge, a highway) to define a block. The census then published population and demographic data associated with each block (a P.L 94-171 file). Then the Statewide Database on behalf of the state of California takes that PL file and does prisoner reallocation and reassigns in-state prisoners back to their original blocks. To create the 'Populations' report we match up the blocks of each district with the blocks in this file and summarize all of the population within this district.

Defining some of the abbreviations: NL = non-Latino, AIAN=American Indian and Alaskan Native, VAP = Voting Age Population (age 18+), CVAP19 = 2019 Citizen Voting Age Population (an estimate of eligible voters).

Deviations are calculated against an ideal population of each district. To find the ideal population we simply divide the population of San Diego (1,389,899) by the number of districts(9) to find 154,433. The raw deviation is how far off this number a district population is. The final deviation number is found by adding the absolute value of the lowest negative deviation to the highest absolute value of the highest positive deviation. Example: District 9 has the lowest negative deviation of -3.06%. District 5 has the highest positive deviation of 2.80%. So the final deviation is $3.06\% + 2.80\% = 5.86\%$

Components:

The Component report is a list of all of the Community Planning Areas and Neighborhoods and their populations that make up a district.

OldDistrict:

This report lists what existing city council districts and their populations make up the new proposed districts.

Compactness:

For more information on the math behind compactness measures, here is a good resource: <https://fisherzachary.github.io/public/r-output.html>. For these tests, the closer the score is to 1, the more compact the district, and the closer to 0, the less compact the district is.

Splits

There are two versions of the splits report. One that looks at how many districts each Community Planning Association is in and one that looks at how many districts each Neighborhood is in.

Community Splits:

'Military Facilities', 'Reserve' and 'Not Identified' show up as splits, mostly because there are multiple areas with those names. They will show up as splits on almost every map.

Keep in mind physical geography when looking at neighborhood and CPA splits. For example, Los Penasquitos Canyon will show a 0 population split on some maps. This is because there is a very long and very narrow canyon that extends eastward from the community. It falls between Park Village and Mira Mesa and has 0 population. In many of the maps for reasons of compactness we will place this canyon in a different district than the area with residents.

Neighborhood Splits:

Specifically regarding neighborhood splits: when we reduced the number of splits on the map we optimized for CPAs. Many times CPAs and Neighborhoods follow similar but not identical boundaries. Often the CPA will have its line on one side of a highway and the neighborhood the other. So there are 'many' neighborhoods that will show 0 population splits. We hold that in general you should ignore the 0 population splits.

Part of Old District

new_dis tricts	orig_dist	Population		new_dis tricts	orig_dist	Population
1	1	113,977		5	5	148,403
1	2	41,088		5	6	10,232
1	5	1,786		5	1	359
1	6	0		6	6	91,341
2	2	97,967		6	1	52,320
2	6	50,679		6	5	8,571
2	3	1,234		6	7	41
2	1	0		7	7	147,627
2	7	0		7	2	10,897
3	3	144,823		7	6	106
3	7	8,956		8	8	145,991
3	2	0		8	9	6,084
3	8	0		9	9	128,022
3	9	0		9	3	15,391
4	4	136,999		9	4	8,709
4	9	12,098		9	8	3,322
				9	7	2,876

Components

Dist	NAME	Pop	Type	Dist	NAME	Pop	Type
1	PACIFIC BEACH	40,658	COMMUNITY	5	RANCHO PENASQUITOS	43,018	COMMUNITY
1	CARMEL VALLEY	35,889	COMMUNITY	5	RANCHO BERNARDO	42,902	COMMUNITY
1	LA JOLLA	29,783	COMMUNITY	5	SCRIPPS MIRAMAR RANCH	15,943	COMMUNITY
1	UNIVERSITY	16,950	COMMUNITY	5	BLACK MOUNTAIN RANCH	15,795	COMMUNITY
1	PACIFIC HIGHLANDS RANCH	14,379	COMMUNITY	5	MIRAMAR RANCH NORTH	11,880	COMMUNITY
1	TORREY HILLS	6,916	COMMUNITY	5	CARMEL MOUNTAIN RANCH	11,207	COMMUNITY
1	TORREY PINES	6,819	COMMUNITY	5	SABRE SPRINGS	10,786	COMMUNITY
1	TORREY HIGHLANDS	1,786	COMMUNITY	5	TORREY HIGHLANDS	6,892	COMMUNITY
1	DEL MAR MESA	1,050	COMMUNITY	5	DEL MAR MESA	359	COMMUNITY
1	NCFUA SUBAREA II	766	COMMUNITY	5	SAN PASQUAL	212	COMMUNITY
1	LOS PENASQUITOS CANYON	606	COMMUNITY	5	RANCHO PENASQUITOS	44,430	NEIGHBORHOOD
1	FAIRBANKS RANCH COUNTRY CLUB	468	COMMUNITY	5	RANCHO BERNARDO	42,925	NEIGHBORHOOD
1	VIA DE LA VALLE	459	COMMUNITY	5	BLACK MOUNTAIN RANCH	17,392	NEIGHBORHOOD
1	MISSION BAY PARK	279	COMMUNITY	5	SCRIPPS RANCH	15,085	NEIGHBORHOOD
1	RESERVE	43	COMMUNITY	5	MIRAMAR RANCH NORTH	12,738	NEIGHBORHOOD
1	CARMEL VALLEY	52,114	NEIGHBORHOOD	5	CARMEL MOUNTAIN	11,207	NEIGHBORHOOD
1	PACIFIC BEACH	40,617	NEIGHBORHOOD	5	SABRE SPRINGS	10,786	NEIGHBORHOOD
1	LA JOLLA	35,926	NEIGHBORHOOD	5	TORREY HIGHLANDS	4,242	NEIGHBORHOOD
1	TORREY PINES	11,084	NEIGHBORHOOD	5	SAN PASQUAL	189	NEIGHBORHOOD
1	NORTH CITY	8,471	NEIGHBORHOOD	5		0	NEIGHBORHOOD
1	DEL MAR HEIGHTS	6,736	NEIGHBORHOOD	6	MIRA MESA	77,935	COMMUNITY
1	TORREY HIGHLANDS	1,786	NEIGHBORHOOD	6	UNIVERSITY	52,336	COMMUNITY

1	SORRENTO VALLEY	74	NEIGHBORHOOD		6	MILITARY FACILITIES	8,157	COMMUNITY
1	MISSION BAY	31	NEIGHBORHOOD		6	KEARNY MESA	5,382	COMMUNITY
1	TORREY PRESERVE	12	NEIGHBORHOOD		6	SCRIPPS MIRAMAR RANCH	5,059	COMMUNITY
1		0	NEIGHBORHOOD		6	RANCHO ENCANTADA	3,404	COMMUNITY
1	RANCHO PENASQUITOS	0	NEIGHBORHOOD		6	LOS PENASQUITOS CANYON	0	COMMUNITY
2	CLAIREMONT MESA	79,768	COMMUNITY		6	RESERVE	0	COMMUNITY
2	PENINSULA	41,276	COMMUNITY		6	MIRA MESA	73,843	NEIGHBORHOOD
2	OCEAN BEACH	12,922	COMMUNITY		6	UNIVERSITY CITY	52,294	NEIGHBORHOOD
2	MIDWAY-PACIFIC HIGHWAY	7,569	COMMUNITY		6	MIRAMAR	8,346	NEIGHBORHOOD
2	MISSION BEACH	3,292	COMMUNITY		6	KEARNY MESA	5,382	NEIGHBORHOOD
2	NOT IDENTIFIED	2,264	COMMUNITY		6	SCRIPPS RANCH	5,208	NEIGHBORHOOD
2	MISSION BAY PARK	1,409	COMMUNITY		6	SORRENTO VALLEY	3,796	NEIGHBORHOOD
2	OLD TOWN SAN DIEGO	1,234	COMMUNITY		6	RANCHO ENCANTADA	3,404	NEIGHBORHOOD
2	RESERVE	109	COMMUNITY		6		0	NEIGHBORHOOD
2	LINDA VISTA	37	COMMUNITY		6	BAY HO	0	NEIGHBORHOOD
2		0	COMMUNITY		6	CARMEL VALLEY	0	NEIGHBORHOOD
2	CLAIREMONT MESA EAST	25,416	NEIGHBORHOOD		6	LA JOLLA	0	NEIGHBORHOOD
2	POINT LOMA HEIGHTS	20,238	NEIGHBORHOOD		6	NORTH CLAIREMONT	0	NEIGHBORHOOD
2	BAY PARK	16,957	NEIGHBORHOOD		6	RANCHO PENASQUITOS	0	NEIGHBORHOOD
2	NORTH CLAIREMONT	14,915	NEIGHBORHOOD		6	TIERRASANTA	0	NEIGHBORHOOD
2	OCEAN BEACH	12,289	NEIGHBORHOOD		7	NAVAJO	53,486	COMMUNITY
2	BAY HO	12,244	NEIGHBORHOOD		7	LINDA VISTA	35,610	COMMUNITY
2	CLAIREMONT MESA WEST	10,273	NEIGHBORHOOD		7	TIERRASANTA	30,629	COMMUNITY
2	MIDWAY DISTRICT	7,799	NEIGHBORHOOD		7	SERRA MESA	18,376	COMMUNITY
2	LOMA PORTAL	5,996	NEIGHBORHOOD		7	MISSION VALLEY	13,644	COMMUNITY
2	ROSEVILLE / FLEET RIDGE	5,884	NEIGHBORHOOD		7	KEARNY MESA	6,787	COMMUNITY
2	WOODED AREA	3,703	NEIGHBORHOOD		7	EAST ELLIOTT	98	COMMUNITY

2	SUNSET CLIFFS	3,531	NEIGHBORHOOD
2	MISSION BEACH	3,460	NEIGHBORHOOD
2	LA PLAYA	2,367	NEIGHBORHOOD
2		2,261	NEIGHBORHOOD
2	OLD TOWN	982	NEIGHBORHOOD
2	MISSION HILLS	955	NEIGHBORHOOD
2	MISSION BAY	551	NEIGHBORHOOD
2	MIDTOWN	59	NEIGHBORHOOD
	MISSION VALLEY		
2	WEST	0	NEIGHBORHOOD
3	NORTH PARK	46,715	COMMUNITY
3	DOWNTOWN	44,083	COMMUNITY
3	UPTOWN	39,026	COMMUNITY
	GREATER GOLDEN		
3	HILL	14,307	COMMUNITY
3	MISSION VALLEY	9,031	COMMUNITY
3	BALBOA PARK	617	COMMUNITY
3	NORTH PARK	38,693	NEIGHBORHOOD
3	EAST VILLAGE	16,088	NEIGHBORHOOD
3	HILLCREST	14,961	NEIGHBORHOOD
	UNIVERSITY		
3	HEIGHTS	12,276	NEIGHBORHOOD
3	GOLDEN HILL	9,081	NEIGHBORHOOD
3	CORE-COLUMBIA	9,035	NEIGHBORHOOD
3	PARK WEST	8,751	NEIGHBORHOOD
3	MARINA	7,190	NEIGHBORHOOD
	MISSION VALLEY		
3	EAST	6,351	NEIGHBORHOOD
3	MISSION HILLS	5,593	NEIGHBORHOOD
3	SOUTH PARK	5,391	NEIGHBORHOOD
3	MIDTOWN	4,509	NEIGHBORHOOD
3	LITTLE ITALY	4,108	NEIGHBORHOOD
3	CORTEZ	3,943	NEIGHBORHOOD
7	TIERRASANTA	27,929	NEIGHBORHOOD
7	SERRA MESA	25,640	NEIGHBORHOOD
7	LINDA VISTA	24,263	NEIGHBORHOOD
7	LAKE MURRAY	17,388	NEIGHBORHOOD
7	SAN CARLOS	13,494	NEIGHBORHOOD
7	ALLIED GARDENS	12,020	NEIGHBORHOOD
7	MORENA	10,897	NEIGHBORHOOD
7	GRANTVILLE	10,622	NEIGHBORHOOD
7	DEL CERRO	7,576	NEIGHBORHOOD
7	BIRDLAND	4,737	NEIGHBORHOOD
	MISSION VALLEY		
7	EAST	3,508	NEIGHBORHOOD
	CLAIREMONT		
7	MESA EAST	450	NEIGHBORHOOD
7	KEARNY MESA	106	NEIGHBORHOOD
	OTAY		
8	MESA-NESTOR	61,284	COMMUNITY
	SOUTHEASTERN		
8	SAN DIEGO	30,448	COMMUNITY
8	SAN YSIDRO	28,444	COMMUNITY
8	OTAY MESA	19,494	COMMUNITY
	MILITARY		
8	FACILITIES	7,020	COMMUNITY
8	BARRIO LOGAN	4,222	COMMUNITY
	TIJUANA RIVER		
8	VALLEY	1,077	COMMUNITY
8	DOWNTOWN	86	COMMUNITY
8	NOT IDENTIFIED	0	COMMUNITY
8	OTAY MESA WEST	30,112	NEIGHBORHOOD
8	SAN YSIDRO	28,290	NEIGHBORHOOD
8	NESTOR	16,636	NEIGHBORHOOD
8	OCEAN CREST	16,580	NEIGHBORHOOD
8	LOGAN HEIGHTS	13,725	NEIGHBORHOOD
8	BARRIO LOGAN	11,328	NEIGHBORHOOD
8	EGGER HIGHLANDS	9,564	NEIGHBORHOOD

3	MISSION VALLEY WEST	2,605	NEIGHBORHOOD
3	HARBORVIEW	1,348	NEIGHBORHOOD
3	PETCO PARK	885	NEIGHBORHOOD
3	GASLAMP	863	NEIGHBORHOOD
3	BURLINGAME	705	NEIGHBORHOOD
3	HORTON PLAZA	641	NEIGHBORHOOD
3	BALBOA PARK	617	NEIGHBORHOOD
3	OLD TOWN	145	NEIGHBORHOOD
3		0	NEIGHBORHOOD
3	AZALEA/HOLLYWOOD PARK	0	NEIGHBORHOOD
3	CASTLE	0	NEIGHBORHOOD
3	CHEROKEE POINT	0	NEIGHBORHOOD
3	GRANT HILL	0	NEIGHBORHOOD
3	SHERMAN HEIGHTS	0	NEIGHBORHOOD
3	STOCKTON	0	NEIGHBORHOOD
4	SKYLINE-PARADISE HILLS	67,611	COMMUNITY
4	ENCANTO NEIGHBORHOODS	48,624	COMMUNITY
4	MID-CITY:EASTERN AREA	18,169	COMMUNITY
4	SOUTHEASTERN SAN DIEGO	12,409	COMMUNITY
4	MID-CITY:CITY HEIGHTS	2,284	COMMUNITY
4	BAY TERRACES	31,386	NEIGHBORHOOD
4	PARADISE HILLS	17,263	NEIGHBORHOOD
4	OAK PARK	14,742	NEIGHBORHOOD
4	MOUNTAIN VIEW	12,409	NEIGHBORHOOD
4	VALENCIA PARK	10,739	NEIGHBORHOOD
4	JAMACHA LOMITA	10,198	NEIGHBORHOOD
8	SOUTHCREST	6,084	NEIGHBORHOOD
8	PALM CITY	5,316	NEIGHBORHOOD
8	GRANT HILL	3,939	NEIGHBORHOOD
8	SHELLTOWN	3,913	NEIGHBORHOOD
8	OTAY MESA	2,914	NEIGHBORHOOD
8	SHERMAN HEIGHTS	2,787	NEIGHBORHOOD
8	TIJUANA RIVER VALLEY	733	NEIGHBORHOOD
8	BORDER	154	NEIGHBORHOOD
8		0	NEIGHBORHOOD
9	MID-CITY:CITY HEIGHTS	66,699	COMMUNITY
9	COLLEGE AREA	24,969	COMMUNITY
9	MID-CITY:EASTERN AREA	22,461	COMMUNITY
9	MID-CITY:NORMAL HEIGHTS	15,361	COMMUNITY
9	MID-CITY:KENSINGTON-TALMADGE	14,484	COMMUNITY
9	SOUTHEASTERN SAN DIEGO	11,423	COMMUNITY
9	MISSION VALLEY	2,906	COMMUNITY
9		17	COMMUNITY
9	COLLEGE WEST	11,830	NEIGHBORHOOD
9	COLINA DEL SOL	10,321	NEIGHBORHOOD
9	NORMAL HEIGHTS	10,246	NEIGHBORHOOD
9	ROLANDO	10,040	NEIGHBORHOOD
9	COLLEGE EAST	9,945	NEIGHBORHOOD
9	TALMADGE	9,443	NEIGHBORHOOD
9	CASTLE	9,370	NEIGHBORHOOD
9	CORRIDOR	7,607	NEIGHBORHOOD
9	TERALTA EAST	6,259	NEIGHBORHOOD

4	ENCANTO	9,520	NEIGHBORHOOD	9	EL CERRITO	5,984	NEIGHBORHOOD
4	LINCOLN PARK	9,484	NEIGHBORHOOD	9	KENSINGTON	5,963	NEIGHBORHOOD
4	SKYLINE	8,764	NEIGHBORHOOD		FAIRMOUNT		
4	O'FARRELL	6,848	NEIGHBORHOOD	9	VILLAGE	5,361	NEIGHBORHOOD
	RIDGEVIEW/WEBST			9	MT HOPE	5,184	NEIGHBORHOOD
4	ER	5,711	NEIGHBORHOOD				
4	CHOLLAS VIEW	4,523	NEIGHBORHOOD	9	ADAMS NORTH	5,115	NEIGHBORHOOD
4	EMERALD HILLS	4,395	NEIGHBORHOOD	9	TERALTA WEST	4,957	NEIGHBORHOOD
4	ALTA VISTA	2,519	NEIGHBORHOOD		REDWOOD		
	BROADWAY			9	VILLAGE	4,868	NEIGHBORHOOD
4	HEIGHTS	596	NEIGHBORHOOD	9	CHEROKEE POINT	4,672	NEIGHBORHOOD
4	MT HOPE	0	NEIGHBORHOOD				
				9	CHOLLAS CREEK	4,233	NEIGHBORHOOD
				9	SWAN CANYON	4,143	NEIGHBORHOOD
				9	ROLANDO PARK	3,841	NEIGHBORHOOD
					AZALEA/HOLLYWO		
				9	OD PARK	3,682	NEIGHBORHOOD
				9	STOCKTON	3,322	NEIGHBORHOOD
				9	MOUNTAIN VIEW	2,917	NEIGHBORHOOD
				9	FAIRMOUNT PARK	2,855	NEIGHBORHOOD
				9	FOX CANYON	2,165	NEIGHBORHOOD
					MISSION VALLEY		
				9	EAST	1,738	NEIGHBORHOOD
				9	QUALCOMM	1,108	NEIGHBORHOOD
				9	ISLENAIR	1,074	NEIGHBORHOOD
				9	GRANTVILLE	60	NEIGHBORHOOD
				9		17	NEIGHBORHOOD
				9	NORTH PARK	0	NEIGHBORHOOD

Community Planning Association Splits

COMMUNITY	DIST	Total Population		COMMUNITY	DIST	Total Population
BALBOA PARK	3	617		NAVAJO	7	53,486
BARRIO LOGAN	8	4,222		NCFUA SUBAREA II	1	766
BLACK MOUNTAIN RANCH	5	15,795				
CARMEL MOUNTAIN RANCH	5	11,207		NORTH PARK	3	46,715
CARMEL VALLEY	1	35,889		NOT IDENTIFIED	2	2,264
CLAIREMONT MESA	2	79,768		NOT IDENTIFIED	8	0
COLLEGE AREA	9	24,969		OCEAN BEACH	2	12,922
DEL MAR MESA	1	1,050		OLD TOWN SAN DIEGO	2	1,234
				OTAY MESA	8	19,494
DEL MAR MESA	5	359		OTAY MESA-NESTOR	8	61,284
DOWNTOWN	3	44,083		PACIFIC BEACH	1	40,658
DOWNTOWN	8	86		PACIFIC HIGHLANDS RANCH	1	14,379
EAST ELLIOTT	7	98		PENINSULA	2	41,276
ENCANTO NEIGHBORHOODS	4	48,624		RANCHO BERNARDO	5	42,902
FAIRBANKS RANCH COUNTRY CLUB	1	468		RANCHO ENCANTADA	6	3,404
GREATER GOLDEN HILL	3	14,307		RANCHO PENASQUITOS	5	43,018
KEARNY MESA	7	6,787		RESERVE	2	109
KEARNY MESA	6	5,382		RESERVE	1	43
LA JOLLA	1	29,783		RESERVE	6	0
LINDA VISTA	7	35,610		SABRE SPRINGS	5	10,786
LINDA VISTA	2	37		SAN PASQUAL	5	212
LOS PENASQUITOS CANYON	1	606				
LOS PENASQUITOS CANYON	6	0		SAN YSIDRO	8	28,444
MID-CITY:CITY HEIGHTS	9	66,699		SCRIPPS MIRAMAR RANCH	5	15,943
				SCRIPPS MIRAMAR RANCH	6	5,059

MID-CITY:CITY HEIGHTS	4	2,284		SERRA MESA	7	18,376
MID-CITY:EASTERN AREA	9	22,461		SKYLINE-PARADISE HILLS	4	67,611
MID-CITY:EASTERN AREA	4	18,169		SOUTHEASTERN SAN DIEGO	8	30,448
MID-CITY:KENSINGTON-TALMADGE	9	14,484		SOUTHEASTERN SAN DIEGO	4	12,409
MID-CITY:NORMAL HEIGHTS	9	15,361		SOUTHEASTERN SAN DIEGO	9	11,423
MIDWAY-PACIFIC HIGHWAY	2	7,569		TIERRASANTA	7	30,629
MILITARY FACILITIES	6	8,157		TIJUANA RIVER VALLEY	8	1,077
MILITARY FACILITIES	8	7,020		TORREY HIGHLANDS	5	6,892
MIRA MESA	6	77,935		TORREY HIGHLANDS	1	1,786
MIRAMAR RANCH NORTH	5	11,880		TORREY HILLS	1	6,916
MISSION BAY PARK	2	1,409		TORREY PINES	1	6,819
MISSION BAY PARK	1	279		UNIVERSITY	6	52,336
MISSION BEACH	2	3,292		UNIVERSITY	1	16,950
MISSION VALLEY	7	13,644		UPTOWN	3	39,026
MISSION VALLEY	3	9,031		VIA DE LA VALLE	1	459
MISSION VALLEY	9	2,906			9	17
					2	0

Neighborhood Splits

NEIGHBORHOOD	DIST	Total Population	NEIGHBORHOOD	DIST	Total Population
ADAMS NORTH	9	5,115	MISSION BAY	2	551
ALLIED GARDENS	7	12,020	MISSION BAY	1	31
ALTA VISTA	4	2,519	MISSION BEACH	2	3,460
AZALEA/HOLLYWOOD PARK	9	3,682	MISSION HILLS	3	5,593
AZALEA/HOLLYWOOD PARK	3	0	MISSION HILLS	2	955
BALBOA PARK	3	617	MISSION VALLEY EAST	3	6,351
BARRIO LOGAN	8	11,328	MISSION VALLEY EAST	7	3,508
BAY HO	2	12,244	MISSION VALLEY EAST	9	1,738
BAY HO	6	0	MISSION VALLEY WEST	3	2,605
BAY PARK	2	16,957	MISSION VALLEY WEST	2	0
BAY TERRACES	4	31,386	MORENA	7	10,897
BIRDLAND	7	4,737	MOUNTAIN VIEW	4	12,409
BLACK MOUNTAIN RANCH	5	17,392	MOUNTAIN VIEW	9	2,917
BORDER	8	154	MT HOPE	9	5,184
BROADWAY HEIGHTS	4	596	MT HOPE	4	0
BURLINGAME	3	705	NESTOR	8	16,636
CARMEL MOUNTAIN	5	11,207	NORMAL HEIGHTS	9	10,246
CARMEL VALLEY	1	52,114	NORTH CITY	1	8,471
CARMEL VALLEY	6	0	NORTH CLAIREMONT	2	14,915
CASTLE	9	9,370	NORTH CLAIREMONT	6	0
CASTLE	3	0	NORTH PARK	3	38,693
CHEROKEE POINT	9	4,672	NORTH PARK	9	0
CHEROKEE POINT	3	0	O'FARRELL	4	6,848

CHOLLAS CREEK	9	4,233		OAK PARK	4	14,742
CHOLLAS VIEW	4	4,523		OCEAN BEACH	2	12,289
CLAIREMONT MESA EAST	2	25,416		OCEAN CREST	8	16,580
CLAIREMONT MESA EAST	7	450		OLD TOWN	2	982
CLAIREMONT MESA WEST	2	10,273		OLD TOWN	3	145
COLINA DEL SOL	9	10,321		OTAY MESA	8	2,914
COLLEGE EAST	9	9,945		OTAY MESA WEST	8	30,112
COLLEGE WEST	9	11,830		PACIFIC BEACH	1	40,617
CORE-COLUMBIA	3	9,035		PALM CITY	8	5,316
CORRIDOR	9	7,607		PARADISE HILLS	4	17,263
CORTEZ	3	3,943		PARK WEST	3	8,751
DEL CERRO	7	7,576		PETCO PARK	3	885
DEL MAR HEIGHTS	1	6,736		POINT LOMA HEIGHTS	2	20,238
EAST VILLAGE	3	16,088		QUALCOMM	9	1,108
EGGER HIGHLANDS	8	9,564		RANCHO BERNARDO	5	42,925
EL CERRITO	9	5,984		RANCHO ENCANTADA	6	3,404
EMERALD HILLS	4	4,395		RANCHO PENASQUITOS	5	44,430
ENCANTO	4	9,520		RANCHO PENASQUITOS	6	0
FAIRMOUNT PARK	9	2,855		RANCHO PENASQUITOS	1	0
FAIRMOUNT VILLAGE	9	5,361		REDWOOD VILLAGE	9	4,868
FOX CANYON	9	2,165		RIDGEVIEW/WEBS TER	4	5,711
GASLAMP	3	863		ROLANDO	9	10,040
GOLDEN HILL	3	9,081		ROLANDO PARK	9	3,841
GRANT HILL	8	3,939		ROSEVILLE / FLEET RIDGE	2	5,884
GRANT HILL	3	0		SABRE SPRINGS	5	10,786
GRANTVILLE	7	10,622		SAN CARLOS	7	13,494
GRANTVILLE	9	60		SAN PASQUAL	5	189
HARBORVIEW	3	1,348		SAN YSIDRO	8	28,290

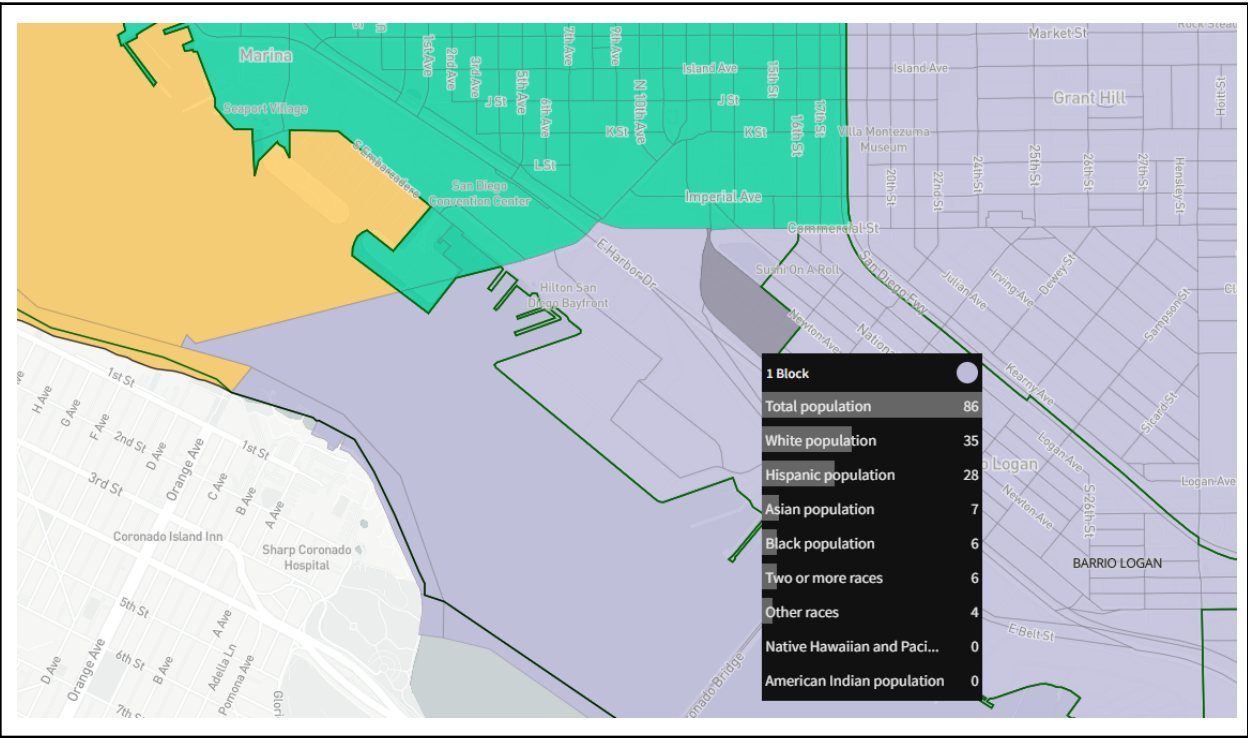
HILLCREST	3	14,961		SCRIPPS RANCH	5	15,085
HORTON PLAZA	3	641		SCRIPPS RANCH	6	5,208
ISLENAIR	9	1,074		SERRA MESA	7	25,640
JAMACHA LOMITA	4	10,198		SHELLTOWN	8	3,913
KEARNY MESA	6	5,382		SHERMAN HEIGHTS	8	2,787
KEARNY MESA	7	106		SHERMAN HEIGHTS	3	0
KENSINGTON	9	5,963		SKYLINE	4	8,764
LA JOLLA	1	35,926		SORRENTO VALLEY	6	3,796
LA JOLLA	6	0		SORRENTO VALLEY	1	74
LA PLAYA	2	2,367		SOUTH PARK	3	5,391
LAKE MURRAY	7	17,388		SOUTHCREST	8	6,084
LINCOLN PARK	4	9,484		STOCKTON	9	3,322
LINDA VISTA	7	24,263		STOCKTON	3	0
LITTLE ITALY	3	4,108		SUNSET CLIFFS	2	3,531
LOGAN HEIGHTS	8	13,725		SWAN CANYON	9	4,143
LOMA PORTAL	2	5,996		TALMADGE	9	9,443
MARINA	3	7,190		TERALTA EAST	9	6,259
MIDTOWN	3	4,509		TERALTA WEST	9	4,957
MIDTOWN	2	59		TIERRASANTA	7	27,929
MIDWAY DISTRICT	2	7,799		TIERRASANTA	6	0
MIRA MESA	6	73,843		TIJUANA RIVER VALLEY	8	733
MIRAMAR	6	8,346		TORREY HIGHLANDS	5	4,242
MIRAMAR RANCH NORTH	5	12,738		TORREY HIGHLANDS	1	1,786
				TORREY PINES	1	11,084
				TORREY PRESERVE	1	12
				UNIVERSITY CITY	6	52,294
				UNIVERSITY HEIGHTS	3	12,276
				VALENCIA PARK	4	10,739
				WOODED AREA	2	3,703
					2	2,261
					9	17

				1	0
				3	0
				5	0
				6	0
				8	0

List of Splits That are NOT being Adjusted in Map 92973

CPA Splits

DOWNTOWN District 8 Population 86
Commission added to unite with Barrio Logan

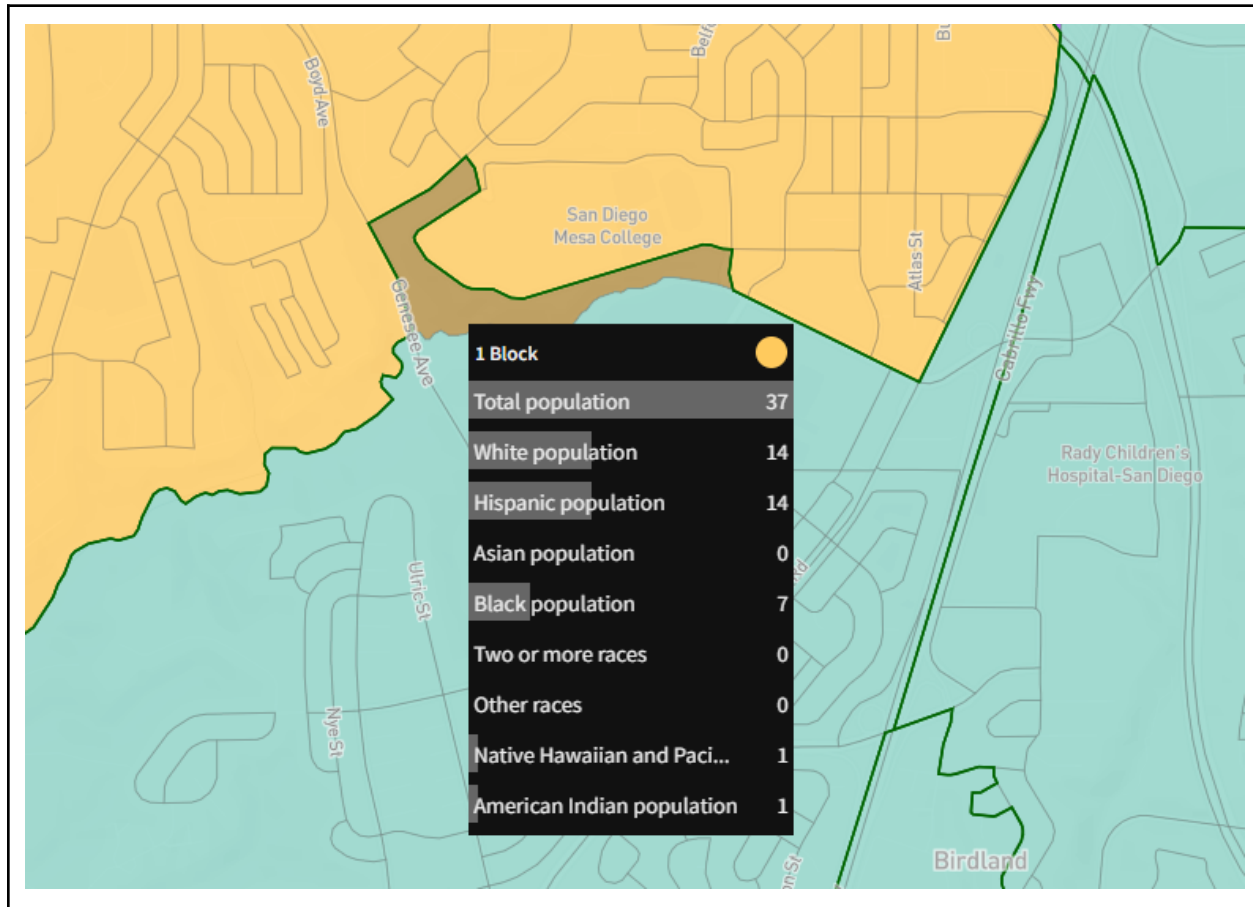


LINDA VISTA

District 2

Population 37

Commission Made this change based on community feedback



LOS PENASQUITOS CANYON District 6 Population 0
Purposeful Decision as this part of the canyon is non-contiguous and would have impacted compactness

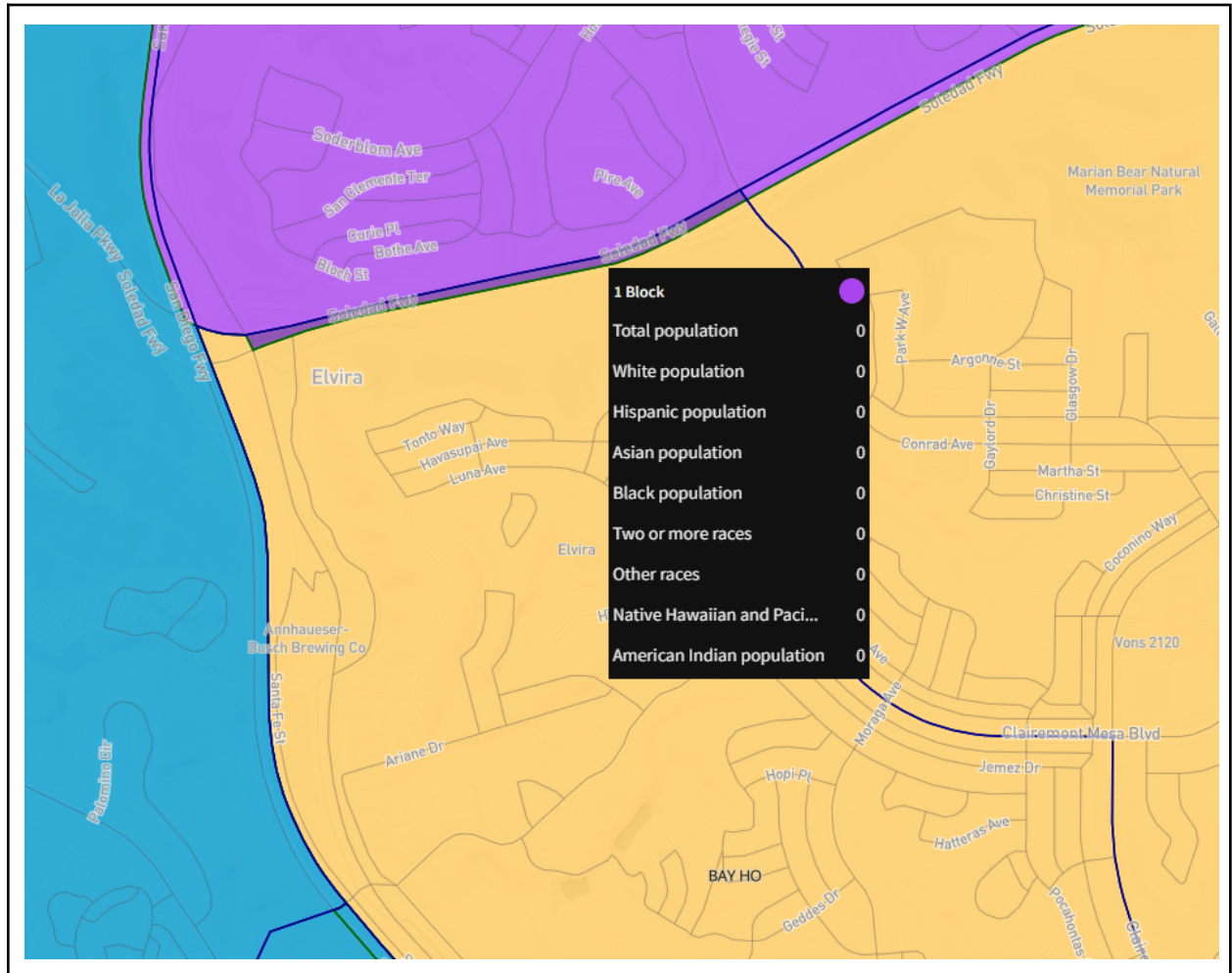
[illegible]

Neighborhood Splits

AZALEA/HOLLYWOOD PARK District 3 Population 0
Conflict between CPA and Neighborhood boundaries.



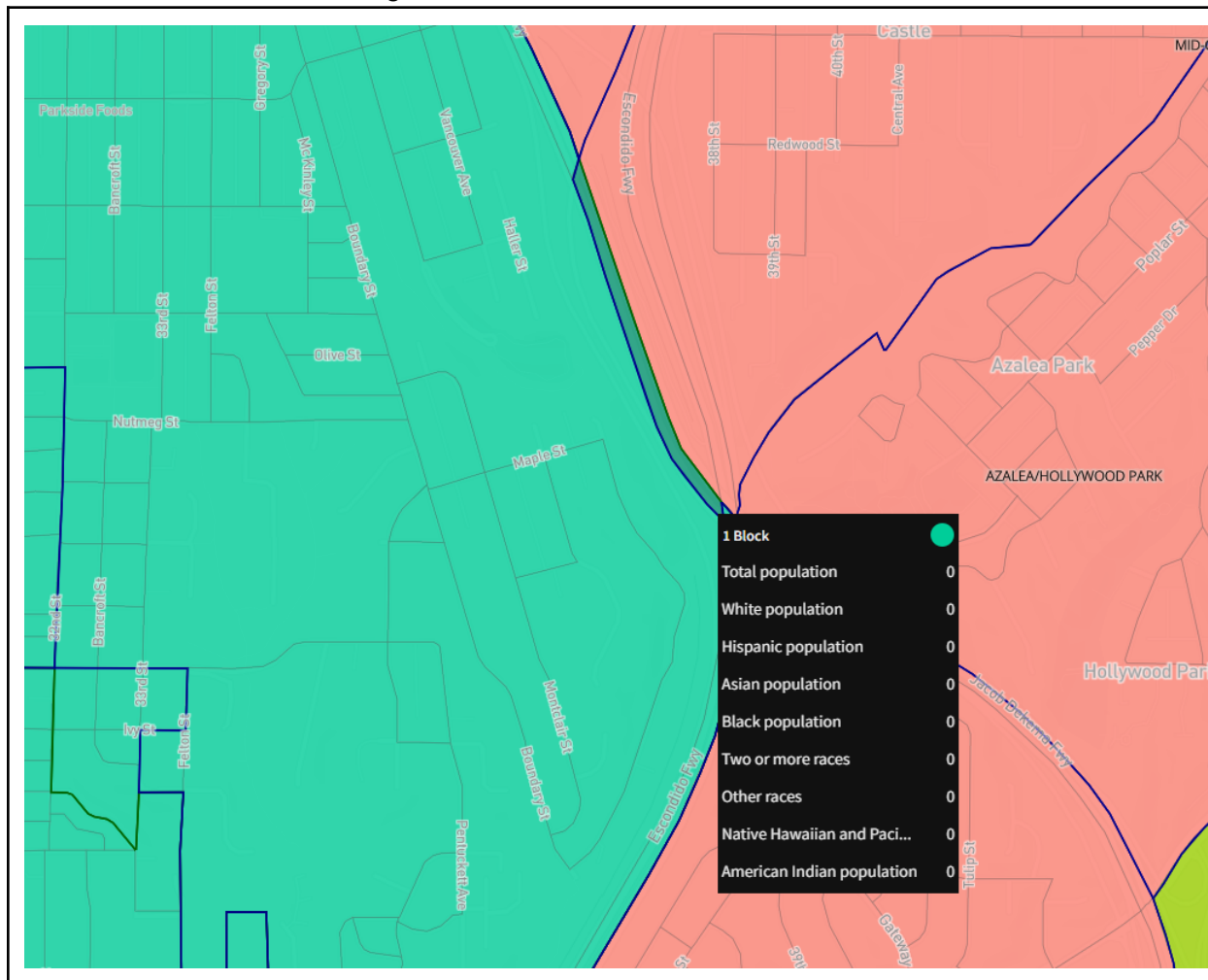
BAY HO District 6 Population 0
Conflict between CPA and Neighborhood boundaries.



CARMEL VALLEY District 6 Population 0
Conflict between CPA and Neighborhood boundaries.

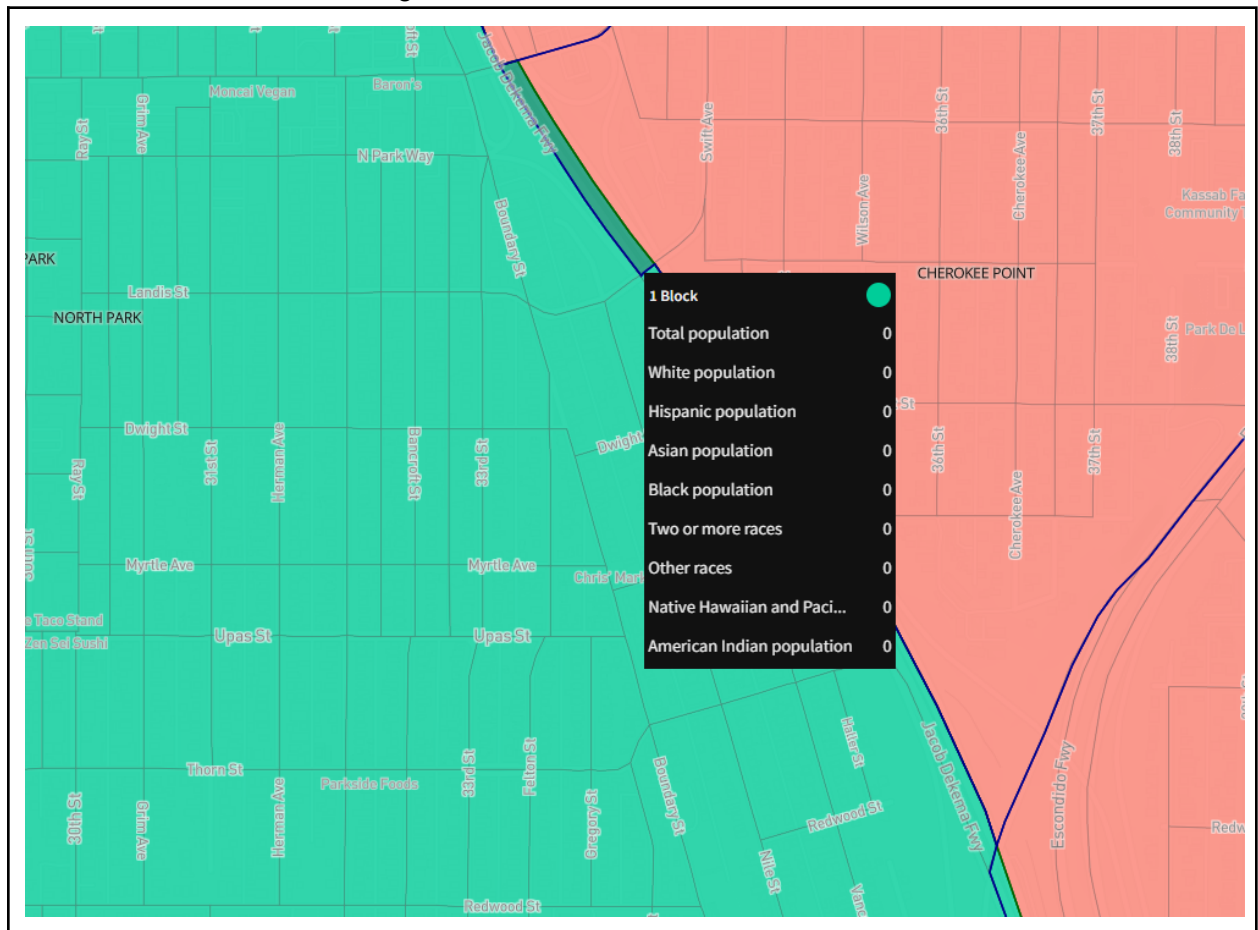


CASTLE District 3 Population 0
Conflict between CPA and Neighborhood boundaries.



CHEROKEE POINT District 3 Population 0

Conflict between CPA and Neighborhood boundaries.

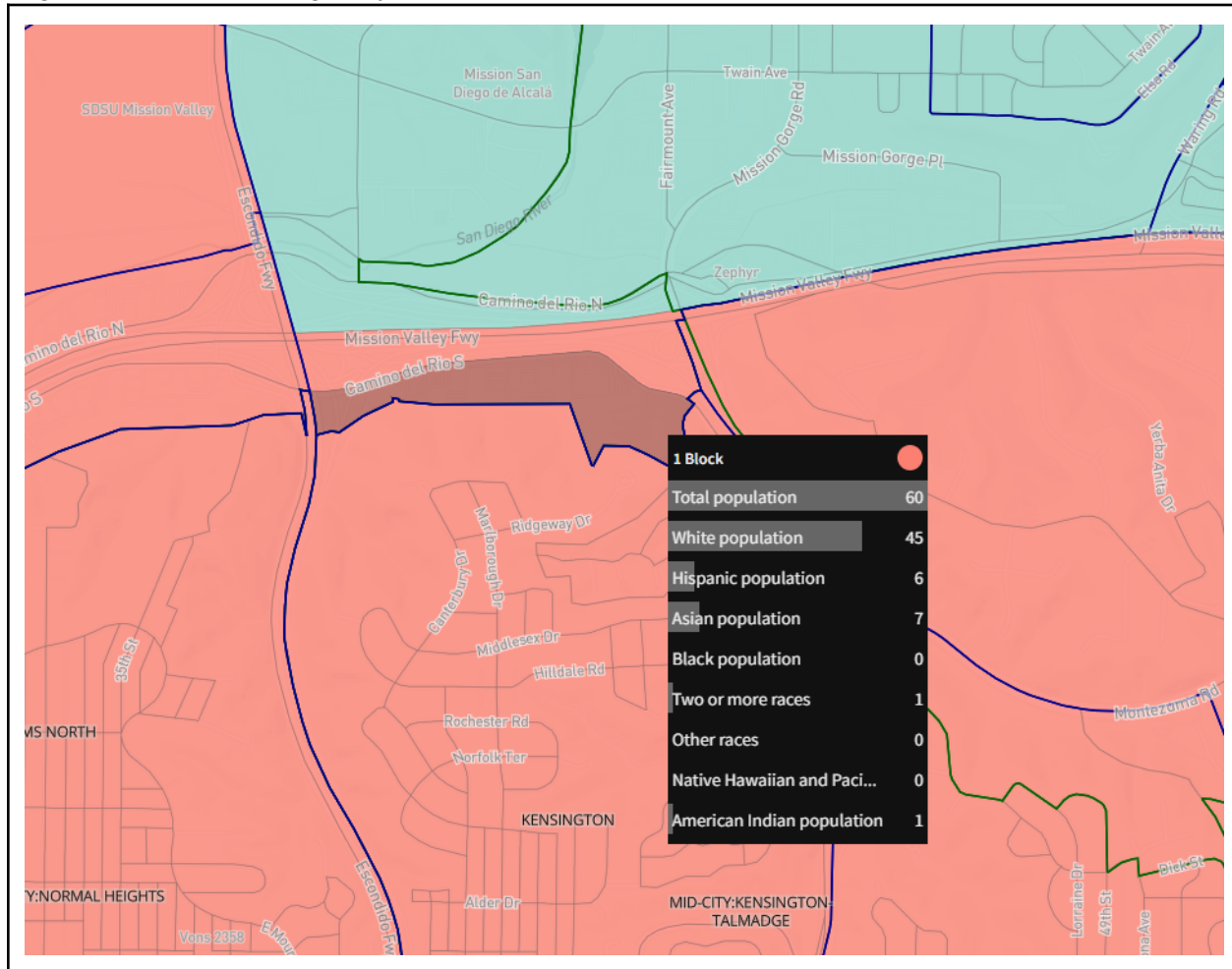


GRANT HILL District 3 Population 0
 Conflict between CPA and Neighborhood boundaries.



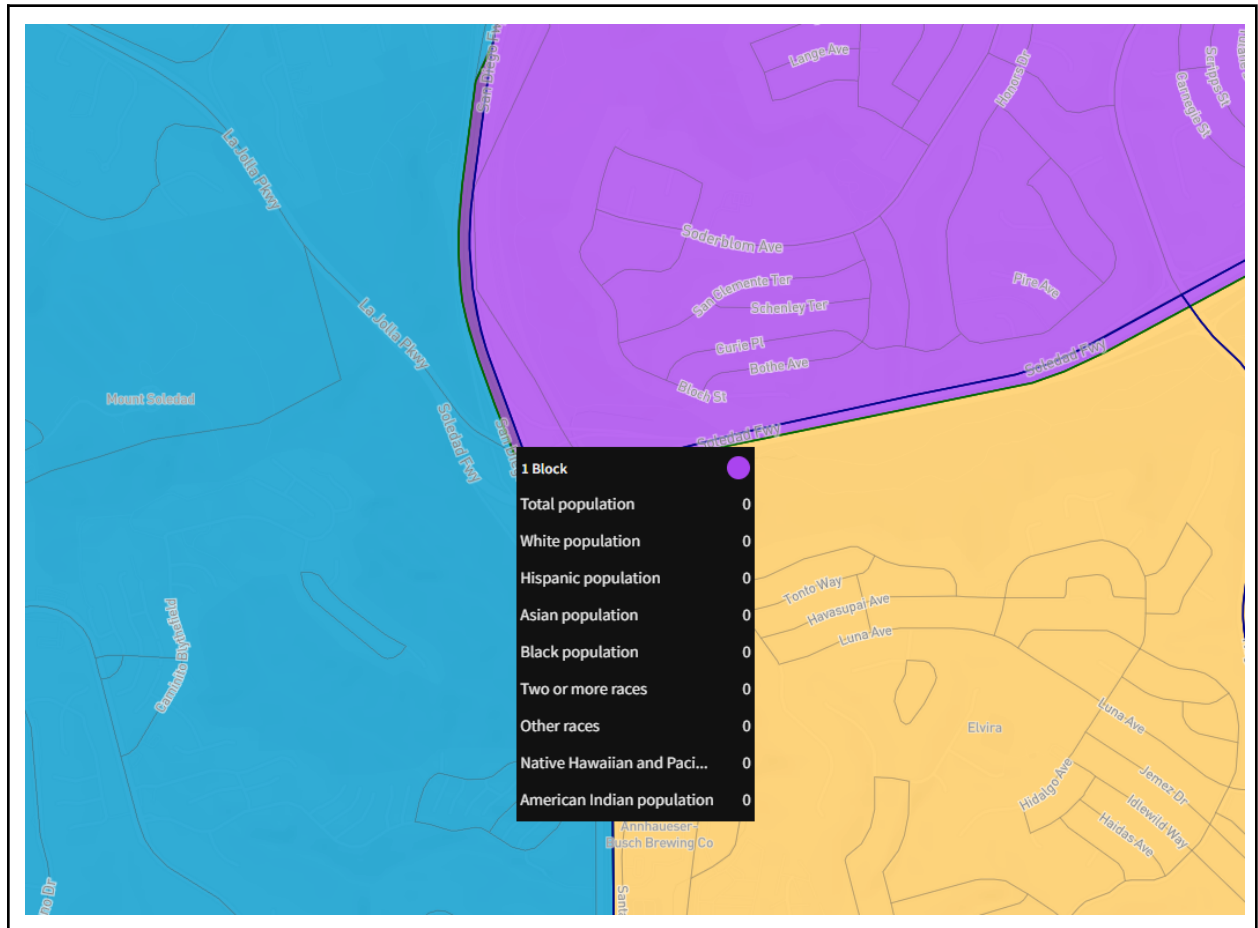
GRANTVILLE District 9 Population 60

The commission did not follow the Neighborhood boundary, they followed the Highway, this segment is below the highway

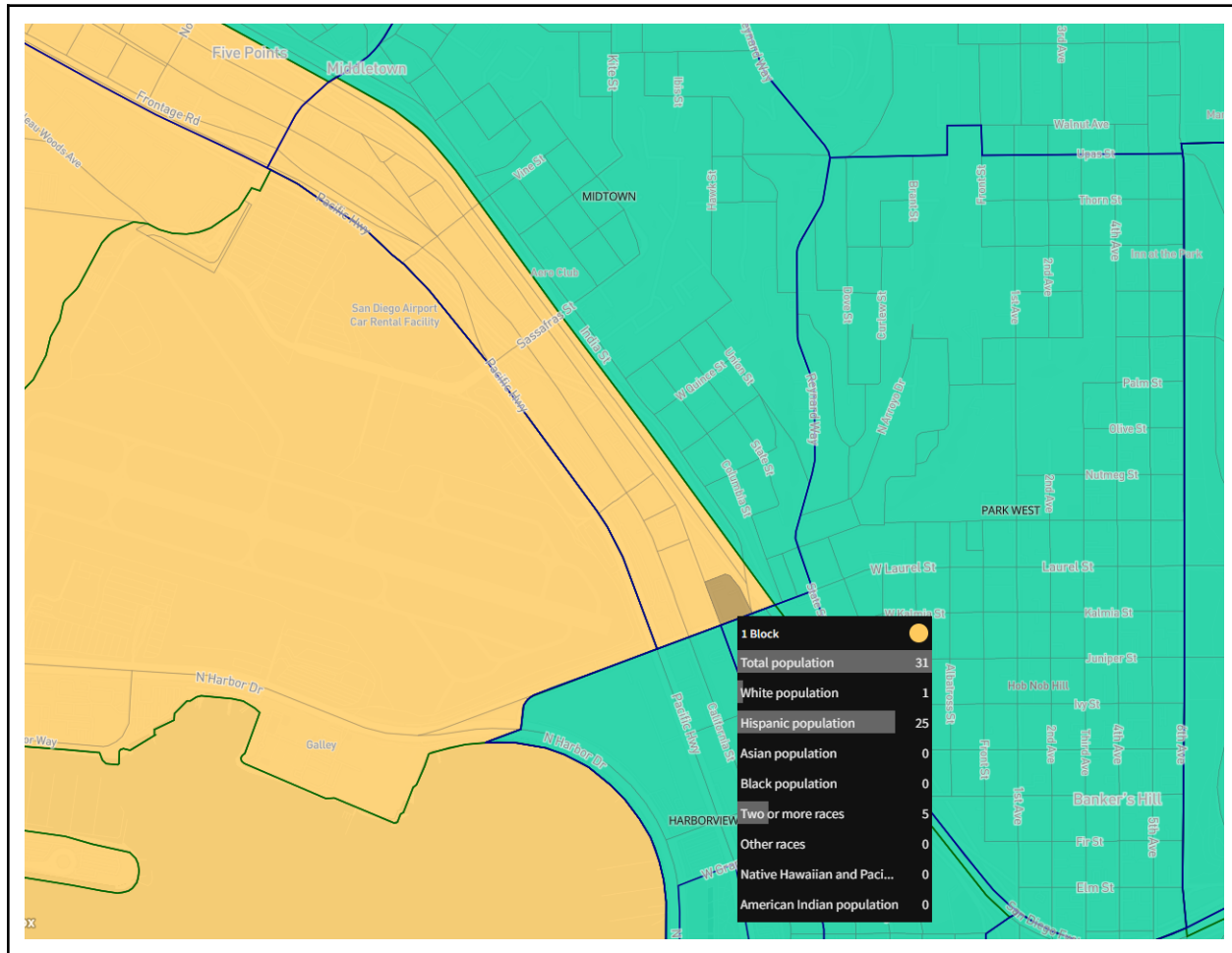


LA JOLLA District 6 Population 0

Conflict between CPA and Neighborhood boundaries.



MIDTOWN District 2 Population 59
 Conflict between CPA and Neighborhood boundaries.

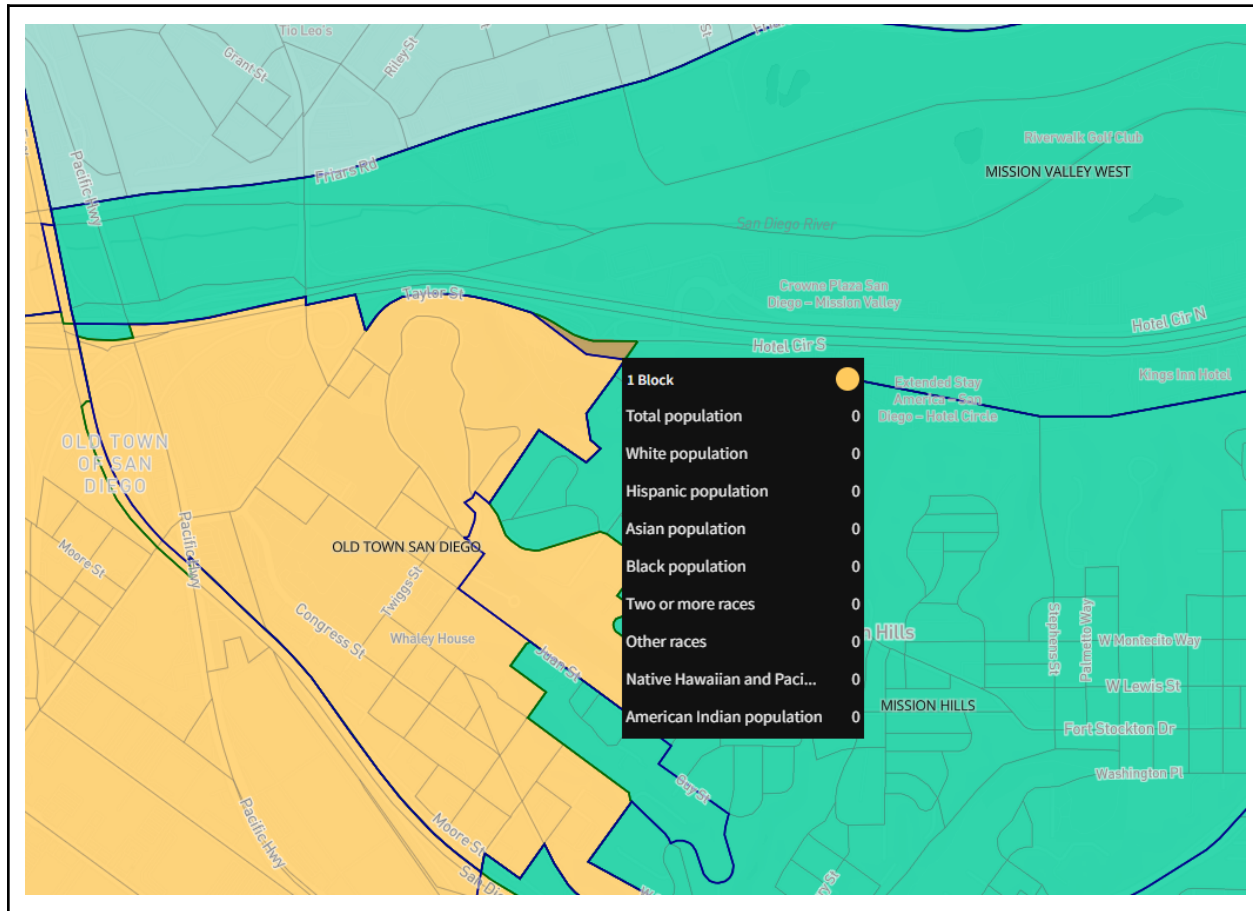


MISSION BAY District 1 Population 31

These are a couple of blocks that were grabbed when the commission pushed out Pacific Beach to the neighborhood boundary



MISSION VALLEY WEST District 2 Population 0
 Conflict between CPA and Neighborhood boundaries.

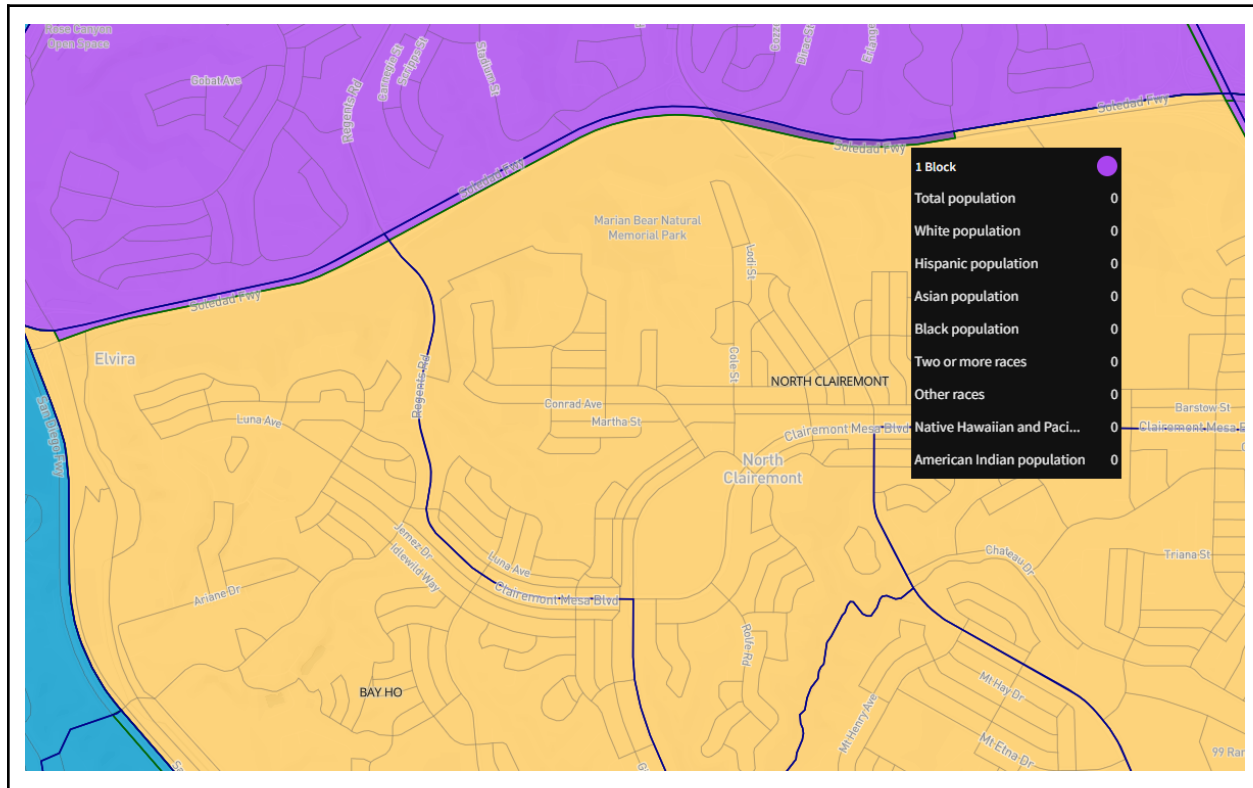


NORTH CLAIREMONT

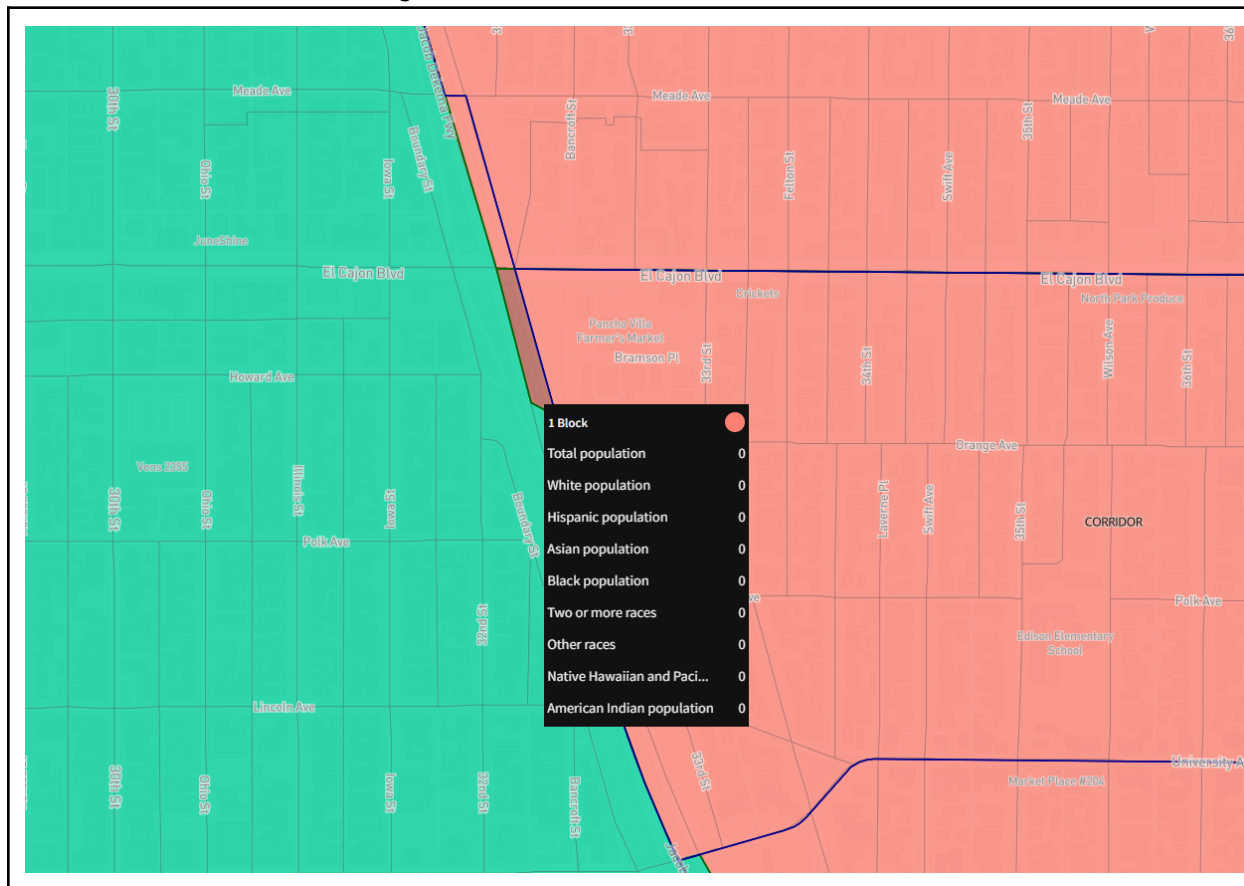
District 6

Population 0

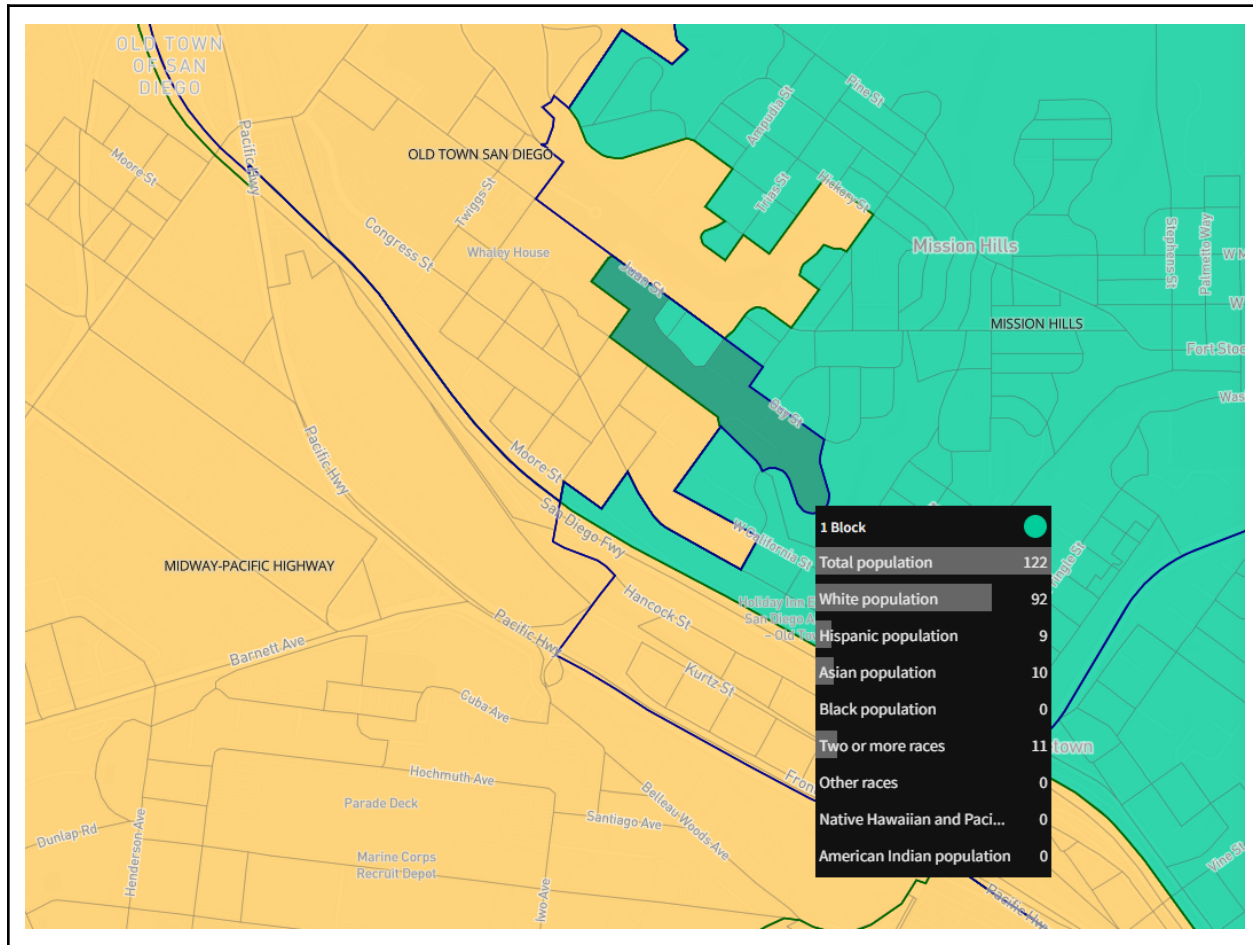
Conflict between CPA and Neighborhood boundaries.



NORTH PARK District 9 Population 0
Conflict between CPA and Neighborhood boundaries.

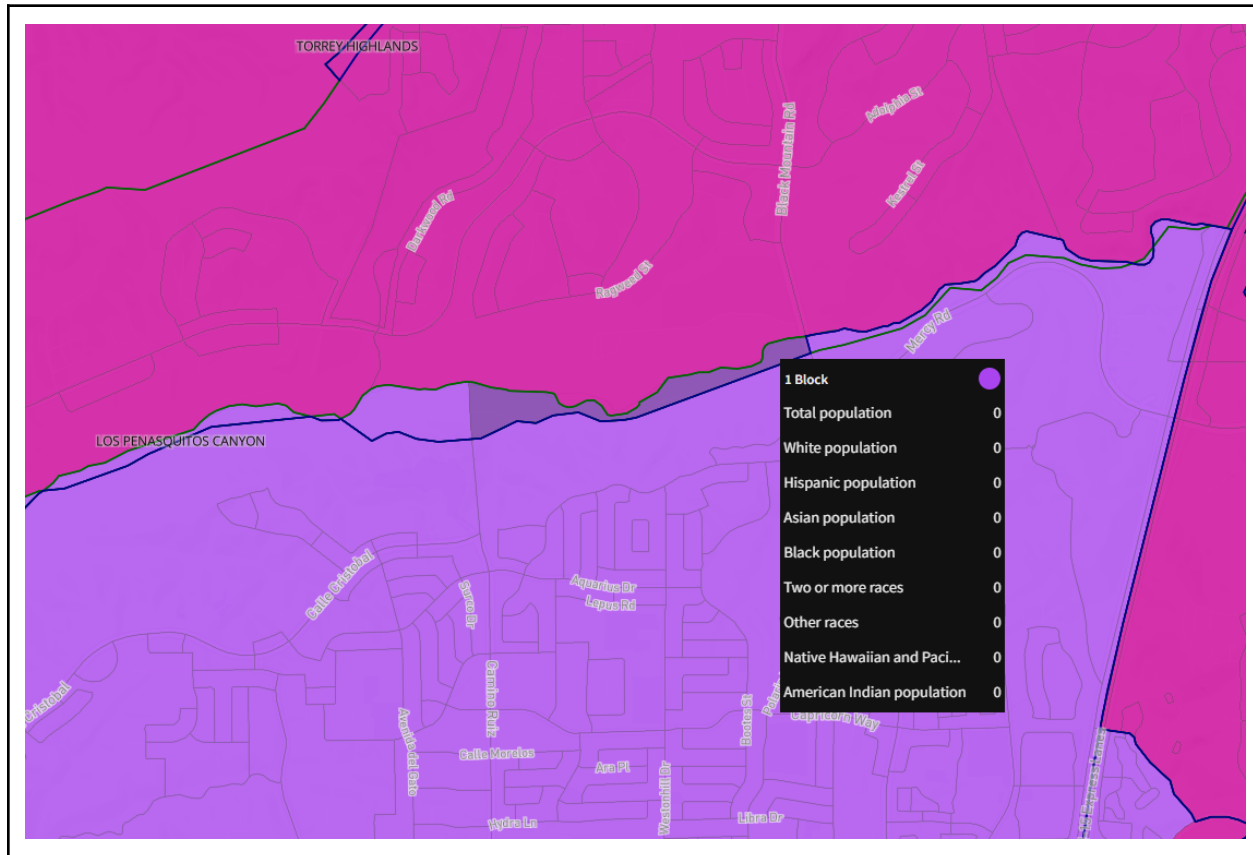


OLD TOWN District 3 Population 145
Conflict between CPA and Neighborhood boundaries.



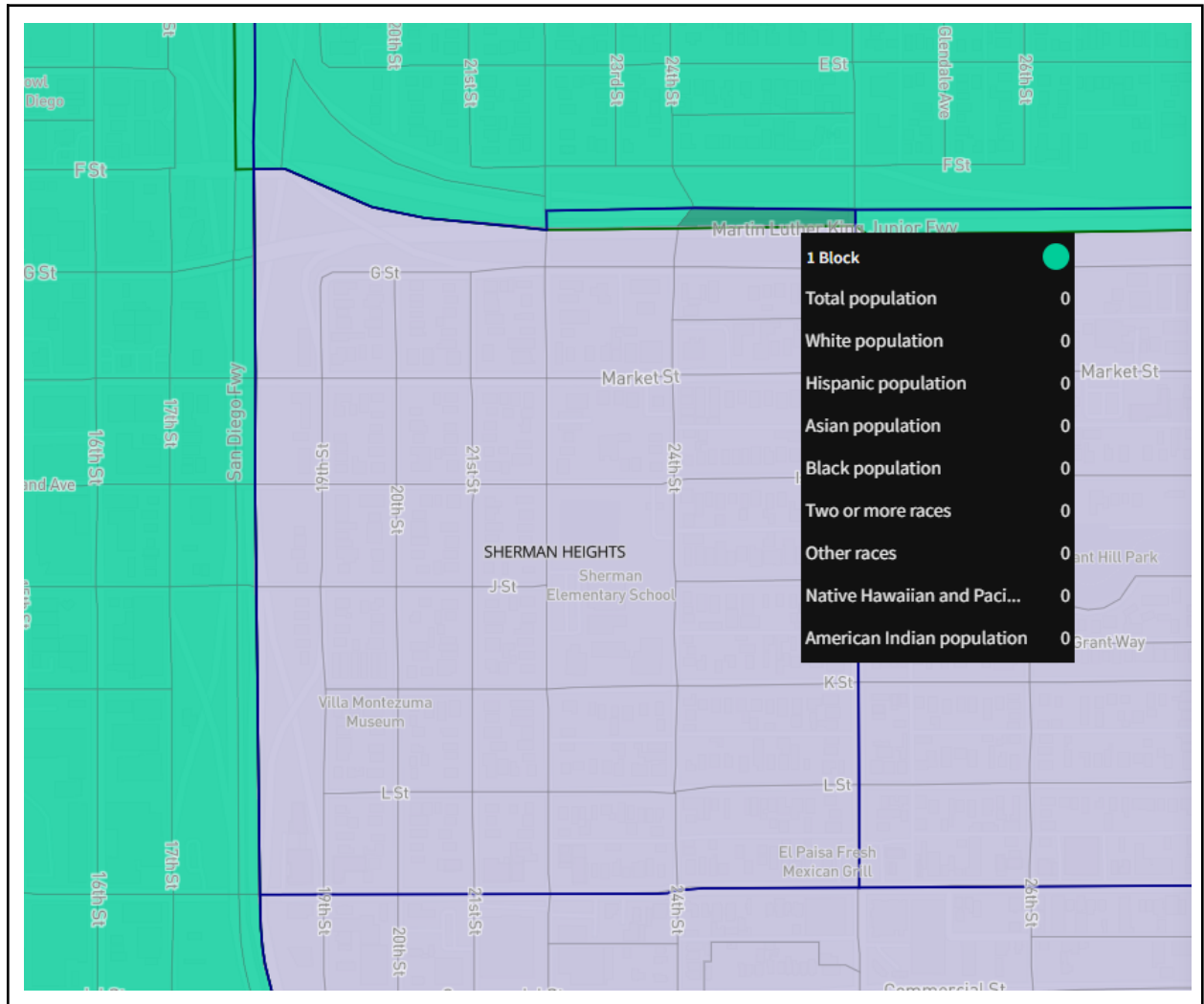
Population 0

Conflict between CPA and Neighborhood boundaries.

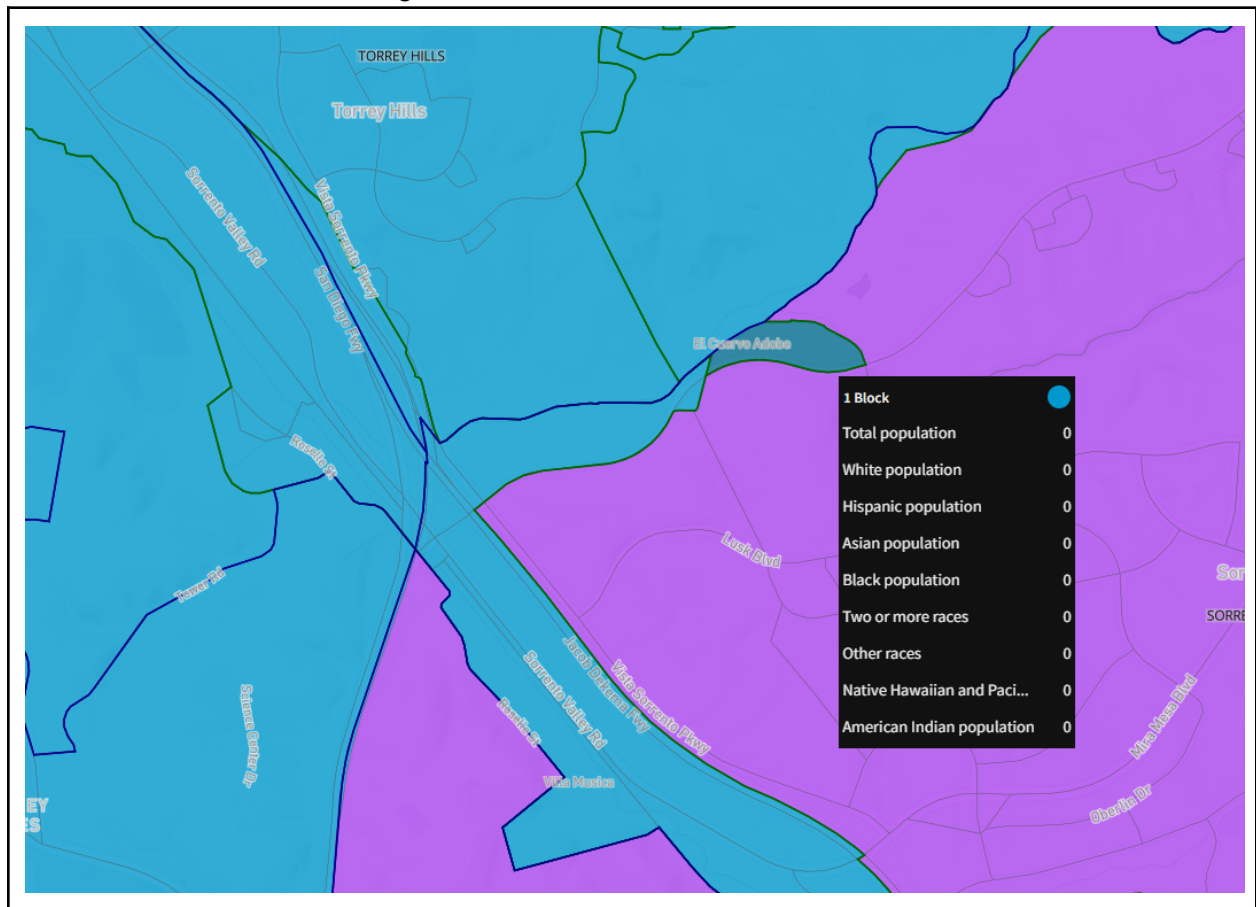


SHERMAN HEIGHTS District 3 Population 0

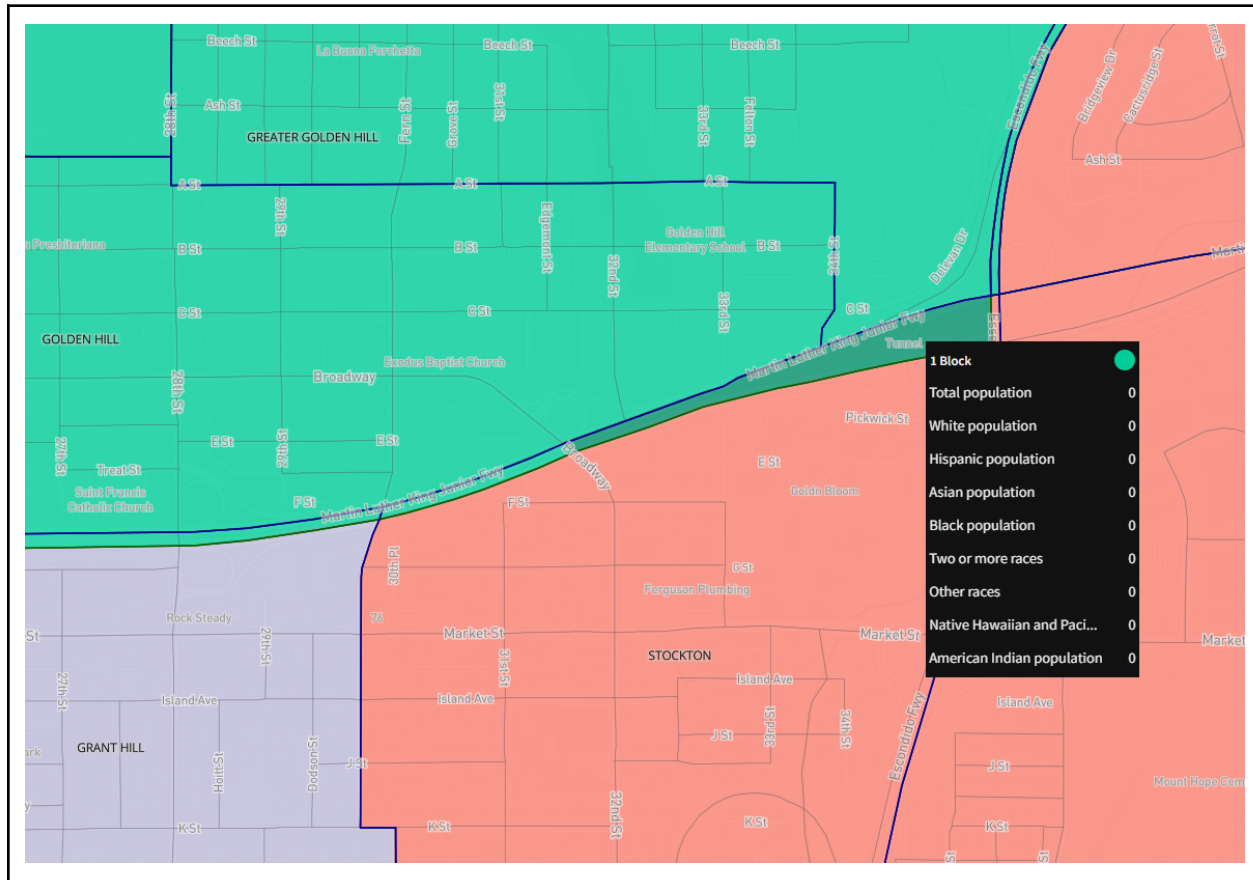
Conflict between CPA and Neighborhood boundaries.



SORRENTO VALLEY District 1 Population 74
Conflict between CPA and Neighborhood boundaries.



STOCKTON District 3 Population 0
 Conflict between CPA and Neighborhood boundaries.



TIERRASANTA District 6 Population 0
Conflict between CPA and Neighborhood boundaries.

