

**2020 REDISTRICTING
COMMISSION OF THE
CITY OF SAN DIEGO**

DATE: November ___, 2021

TO: City Clerk

FROM: 2020 Redistricting Commission

SUBJECT: Filing of Preliminary Redistricting Plan for the City of San Diego

INTRODUCTION

The City of San Diego 2020 Redistricting Commission (“the Redistricting Commission” or “Commission”) is vested with sole and exclusive authority to adopt plans that specify the boundaries of districts for the Council of the City of San Diego (“City Council”). San Diego City Charter (“Charter”) sections 5 and 5.1 were enacted by the voters in 1992 to create an independent Redistricting Commission to draw City Council districts in compliance with the law.

The nine-member Redistricting Commission voted [insert final vote tally] to adopt a Preliminary Redistricting Plan (“the Plan”) on November ___, 2021. The Plan complies with the redistricting criteria and legal requirements of Charter sections 5 and 5.1; the U.S. Constitution; the federal Voting Rights Act of 1965; and related cases and statutes. The Redistricting Commission considered and relied upon traditional redistricting criteria in drawing and adopting new City Council district boundaries.

In preparing the Plan, the Redistricting Commission followed these principles:

- Equalize the population by forming City Council districts designated by numbers 1 to 9, inclusive, which contain, as nearly as practicable, one-ninth of the total population of the City of San Diego as shown by the federal Census numbers of 2020;
- Avoid diluting the voting strength of protected classes as set forth in the federal Voting Rights Act of 1965 as much as possible;
- Provide fair and effective representation for all citizens of the City, including racial, ethnic, and language minorities, and be in conformance with the requirements of the United States Constitution and Federal statutes;
- Use contiguous territory to form districts, with reasonable access between population centers in the district;
- Use whole Census tracts or blocks to the extent it is practical to do so;
- Preserve identifiable communities of interest;
- Observe natural boundaries as district dividing lines;
- Draw districts as geographically compact as possible and practical to do so;
- Not draw districts for the purpose of advantaging or protecting incumbents;
- Recognize that the City has a well-organized group of communities and neighborhoods, which has created strong communities of interest; and thus, ensure that each community

planning area and neighborhood is intact in a single district to the extent possible, while adhering to the law and applying and balancing traditional redistricting principles.

Meetings and testimony: The Redistricting Commission convened 26 public meetings between October 23, 2020 and November 9, 2021, each noticed in accordance with the Ralph M. Brown Act (“Brown Act”). These meetings included twelve monthly meetings, nine widely publicized Pre-Map Public Hearings, one for each City Council district, and five additional special meetings, complying with the requirement of the Charter to hold at least nine public hearings before the preparation of a Preliminary Redistricting Plan. Pursuant to the Governor’s Executive Orders N-25-20, N-29-20, N-08-21, and N-15-21 which suspended certain requirements of the Brown Act due to the COVID-19 pandemic, and the findings adopted by the Redistricting Commission pursuant to California Government Code section 54953(e) on October 21, 2021, all Redistricting Commission meetings were conducted virtually with all Commissioners and members of the public participating virtually, in the interest of public health and safety. Approximately 1,500 people attended these hearings.

During those hearings, the Redistricting Commission heard from more than 600 public speakers. To date, the Commission has received approximately 209 email/letter public comments and 319 webform public comments which were all posted on the Redistricting Commission website. The Commission also received approximately 202 maps, 173 written testimony and 64 Communities of Interest (COI) submissions on Districtr, the online redistricting mapping tool. The Commission considered the testimony, written submissions, and maps before adopting the Plan.

Public outreach: Public outreach efforts included providing simultaneous interpretation in Spanish at the August 17, 2021, August 24, 2021, and September 14, 2021 Pre-Map Public Hearings. Agendas were provided in Spanish starting from the May 20, 2021 meeting to the present. For the meetings of May 20, 2021, June 17, 2021 and July 15, 2021, agendas were provided in Arabic, Chinese, Japanese, Korean, Lao, Tagalog, and Vietnamese. Commissioners and the chief of staff provided community outreach presentations to approximately 21 community planning groups throughout the City of San Diego. In addition, the recordings of Redistricting Commission meetings were posted on the website.

The Commission has been committed to transparency in its proceedings. To maximize public access to its proceedings, the Commission procured online redistricting mapping software (Districtr) so the public could draw, share, propose, and submit maps to the Commission. Public training for the software was held on September 16, 2021, September 28, 2021, and October 5, 2021. Training videos were also available on the Commission’s website. All maps submitted to the Commission and developed by the Commission for consideration are available online (<https://portal.sandiego-mapping.org/#gallery>).

THE PRELIMINARY PLAN

A map of the Plan (adopted November [REDACTED], 2021) is attached. The Plan divides the City's population of 1,389,899 into nine City Council districts of approximately equal population. The Commission's goal was to draw districts with as close to a population of 154,433 as possible, while ensuring districts were drawn in compliance with redistricting law and the principles set forth above. The Plan has a total population deviation of 7.77%. The largest City Council district has a population of 160,841 (+4.15% in population); the smallest district has a population of 148,841 (-3.62% in population). Demographics for the districts, including Citizen Voting Age Population (CVAP) and population by racial groups per district, are detailed in attachments to this statement. For consistency, this Plan uses the same terminology used by the 2020 Census to describe racial and ethnic groups.

This Plan is described below in detail. The Charter directs that the Redistricting Commission consider U.S. Census data. However, due to delays, the U.S. Census has not yet produced CVAP data for the 2020 Census. The United States Department of Justice (DOJ) uses CVAP to investigate and prosecute certain Voting Rights Act cases. In early 2021, the DOJ told the Census Bureau that it could use CVAP data from the 2019 American Communities Survey (ACS). CVAP data used in this plan refers to the data from the ACS.

Additionally, all definitions of neighborhoods that follow have been matched to the nearest and most logically corresponding Census Block border but may differ from City maps in which City definitions do not follow Census geography. The Community Planning Area (CPA) and Neighborhood areas referred to in this Plan were obtained from San Diego County's Geographic Information System (SANGIS) and were available to the public in the Districtr mapping software available on the Commission's website. Detailed demographics for each City Council district in the Plan appear at the end of this filing statement. The Districts may be summarized as follows:

DISTRICT 1

- Community Planning Areas
 - La Jolla
 - Midway-Pacific Highway
 - Mission Bay Park
 - Mission Beach
 - Ocean Beach
 - Pacific Beach
 - Peninsula
 - University (partial – southern portion)
- Neighborhoods
 - La Jolla (partial – portion south of La Jolla Village Drive, west of Gilman Drive)
 - La Playa
 - Loma Portal

- Midway District
- Mission Bay
- Mission Beach
- Ocean Beach
- Pacific Beach
- Point Loma Heights
- Roseville/Fleetridge
- Sunset Cliffs
- University City (partial – portion south of Rose Canyon)
- Wooded Area
- Demographics
 - Total population: 153,088
 - Deviation: -0.87% (-1,345 people)
 - Historical: Approximately 28.6% of the population to be included in the new District 1 is presently included in the current District 1.
- Contiguity

The district is geographically contiguous. There is reasonable access between population centers in the district. La Jolla, University City, Mission Bay, Midway District, and San Diego International Airport are connected by Interstate 5. La Jolla and University City are connected by State Route 52. Midway Drive, Ingraham Street, and Nimitz Boulevard are major connecting streets. Mission Bay Drive and Mission Bay Boulevard connect Mission Beach to Pacific Beach. The Pacific Beach area is connected to Interstate 5 by Grand Avenue and Garnet Avenue.
- Findings and Reasons for Adoption
 - Per the 2020 census data, District 1, as currently drawn, started out having a population of 166,620 and was over the ideal district size with a deviation of +7.91%. District 1 had the highest total population and deviation among the nine Council districts.
 - This map maintains two coastal districts.
 - University of California San Diego (UCSD) was a point of contention for the community. Students and community groups provided testimony to request that UCSD and University City be moved to District 6. There were other District 1 residents and community groups who requested little to no changes to the 2011 District 1 boundaries.
 - The Commission decided to move UCSD and the northern portion of University City to District 6 based on the requests of the students and their stated common interests with the communities located in District 6, including its significant Asian population.
 - A portion of University City is split between District 1 and District 6 along Rose Canyon and transfers a portion of the Asian population to District 6. The northern

portion of University City contains a significant UCSD student population who had requested to be moved into District 6.

- The Commission provided the retained mapping consultant, HaystaqDNA, with instructions on October 12, 2021, which stated, “Try to keep community planning groups intact, especially if the community is currently updating or recently had their update approved.” Although efforts were made to keep the University City Planning Group intact, it is split between District 1 (54,997 people) and District 6 (14,289 people).
- The Commission decided to move the coastal communities of La Jolla, Pacific Beach, Mission Beach, and Mission Bay into the same district based on their common interests and concerns, including traffic, beaches and bays, tourism, environmental issues including sea level rise, traffic, noise, and pollution impacts from the San Diego Airport, which was moved into District 1.
- The district is geographically compact to the extent possible while balancing other criteria and community of interest boundaries.

DISTRICT 2

- Community Plan Areas

- Clairemont Mesa
- Kearny Mesa (partial – portion east of State Route 163)
- Linda Vista
- Mission Valley (partial – portion north of Friars Road and east of State Route 163)
- Serra Mesa

- Neighborhoods

- Bay Ho
- Bay Park
- Birdland
- Clairemont Mesa East
- Clairemont Mesa West
- Kearny Mesa (partial – portion east of State Route 163)
- Mission Valley East (partial – portion north of Friars Road)
- Linda Vista
- Morena
- North Clairemont
- Serra Mesa

- Demographics

- Total population: 149,933
- Deviation: -2.91% (-4,500 people)

- Historical: Approximately 26.6% of the population to be included in the new District 2 is presently included in the current District 2.
- Contiguity

The district is geographically contiguous. Bay Ho, Bay Park, and Morena are connected by Interstate 5. Balboa Avenue is a connection point for Clairemont Mesa East, Clairemont Mesa West, Bay Park, and Bay Ho. North Clairemont, Clairemont Mesa East, Birdland, Serra Mesa, and Mission Valley East are connected by Interstate 805. Kearny Mesa, Serra Mesa, Clairemont Mesa East, Birdland, Linda Vista, and Mission Valley East are connected by State Route 163.
- Findings and Reasons for Adoption
 - Per the 2020 census data, District 2 started out having a population of 149,985 and was under the ideal district size with a deviation of -2.88%.
 - Pursuant to requests from the community, the Clairemont communities were reunited into one district given their common interests and the significant public testimony requesting it not be divided.
 - Pursuant to requests from the community, Linda Vista was reunited into one district.
 - Bay Ho and Bay Park were moved back into District 2, where they had been prior to the 2011 plan.
 - The district is geographically compact to the extent possible while balancing the other criteria and community of interest boundaries. The district does not bypass population unless required to unite communities of interest or otherwise achieve other criteria.

DISTRICT 3

- Community Plan Areas
 - Balboa Park
 - Centre City/Downtown (excluding 10th Avenue terminal)
 - Greater Golden Hill
 - North Park
 - Midway – Pacific Highway (partial – southeastern portion)
 - Mission Valley (partial – southwestern portion)
 - Old Town San Diego
 - Uptown
- Neighborhoods
 - Balboa Park
 - Bankers Hill
 - Burlingame
 - Core-Columbia
 - Cortez Hill

- East Village
- Gaslamp Quarter
- Golden Hill
- Grant Hill (partial – portion north of State Route 94)
- Harbor View
- Hillcrest
- Horton Plaza
- Little Italy
- Marina
- Midtown
- Mission Hills
- Mission Valley East (partial – southern portion)
- Mission Valley West
- North Park
- Old Town
- Park West
- Petco Park
- Sherman Heights (partial – portion north of State Route 94)
- South Park
- Stockton (partial – portion north of State Route 94)
- University Heights
- Demographics
 - Total population: 155,775
 - Deviation: +0.87% (+1,342 people)
 - Historical: Approximately 93.7% of the population to be included in the new District 3 is presently included in the current District 3.
- Contiguity

The district is geographically contiguous. There is reasonable access between population centers in the district. Old Town, Mission Hills, Park West, Bankers Hill, Balboa Park, and Golden Hill are accessible by Interstate 5. University Heights, Hillcrest, Balboa Park, Downtown, and Mission Valley are accessible by State Route 163 (Cabrillo Freeway). Hillcrest is connected to University Heights by University Avenue. North Park is connected to the South Park and Golden Hill areas by Interstate 805 and Interstate 15. Mission Valley is connected to University Heights by Interstate 805 and Texas Street. Broadway and B Street connect the Downtown area to San Diego City College and Golden Hill.
- Findings and Reasons for Adoption
 - Per the 2020 census data, District 3 started out having a population of 161,448 and was over the ideal district size with a deviation of +4.54%.

- Normal Heights and Adams North were moved from District 3 to District 9 to decrease the district's total population. Normal Heights was also moved so the neighborhood's Community Planning Group is within a single Council district.
- A small portion of Mission Hills and Midtown in District 2 was added to District 3 using Pacific Highway as the natural boundary. The majority of Mission Hills and Midtown were already located within District 3.
- A portion of Mission Valley was added to District 3 for population balance.
- Balboa Park remains a major common interest of many of the neighborhoods in District 3 and was left intact.
- The older, urban communities of character surrounding Balboa Park including Hillcrest, North Park, South Park, and Golden Hill remained in District 3.
- With the exception of the 10th Avenue terminal, Downtown remained within a single district. The 10th Avenue terminal area was moved to District 8 at the requests of residents of Barrio Logan because of the traffic, environmental, and health impacts it has on the adjacent community of Barrio Logan. The total population of the 10th Avenue terminal area moved to District 8 was 86 people.
- University Heights remained intact within a single Council district.
- The LGBTQ (Lesbian-Gay-Bisexual-Transgender-Queer) Community has historically had a large population residing south of Interstate 8 in communities represented by Council District 3. The district boundaries were drawn to respect and acknowledge this history and to provide fair representation for the LGBTQ community.
- The district is geographically compact to the extent possible while balancing the other criteria and community of interest boundaries. The district does not bypass population unless required to unite communities of interest or otherwise achieve other criteria.

DISTRICT 4

- Community Plan Areas
 - City Heights (partial – Ridgeview neighborhood)
 - Encanto Neighborhoods
 - Eastern Area (partial – neighborhoods of Oak Park Redwood Village, Rolando Park, and Webster)
 - Skyline-Paradise Hills
 - Southeastern San Diego (partial – portions east of Boundary Street, S. 40th Street, San Pasqual Street, and S. 43rd Street, and south of K Street)
- Neighborhoods
 - Alta Vista
 - Bay Terraces
 - Broadway Heights

- Chollas View
- Emerald Hills
- Encanto
- Jamacha
- Lincoln Park
- Lomita
- Mountain View (partial – portion east of Boundary Street, S. 40th Street, San Pasqual Street, and S. 43rd Street)
- Oak Park
- Paradise Hills
- Redwood Village
- Ridgeview
- Rolando Park
- Skyline
- Valencia Park
- Webster
- Demographics
 - Total population: 152,348
 - Deviation: -1.35% (-2,085 people)
 - Historical: Approximately 95.6% of the population to be included in the new District 4 is presently included in the current District 4.
- Contiguity

The district is geographically contiguous. There is reasonable access between population centers in the district. Broadway Heights, Emerald Hills, Ridgeview, and Webster are connected by State Route 94 (Martin Luther King, Jr. Freeway). Mountain View, Lincoln Park, Chollas View, and Ridgeview are connected by Interstate 805. North Encanto and Emerald Hills are connected by Akins Avenue. Rolando Park, Redwood Village, and Oak Park are connected by College Avenue and Streamview Drive. Imperial Avenue connects O'Farrel, Skyline, and Jamacha. State Route 54 (South Bay Freeway) connects Bay Terraces South and Paradise Hills in the southern portion of District 4.
- Findings and Reasons for Adoption
 - Per the 2020 census data, District 4 started out having a population of 145,708 and was under the ideal district size with a deviation of -5.65%.
 - The Commission largely respected the current boundaries of District 4, consistent with public testimony that the district be kept as close as possible to its present boundaries, while recognizing that this district needed to gain population.
 - The Commission recognized that District 4 has a large, geographically compact Black population and that it has historically been a Black influence district. The Commission wished to draw a district that respected that history. The district also has a well-established community of interest surrounding its churches, schools,

and neighborhoods. District 4's population will be 15.6% Black, 45.5% Latino, and 22.6% Asian.

- The district is geographically compact to the extent possible while balancing the other criteria and community of interest boundaries. The district does not bypass population unless required to unite communities of interest or otherwise achieve other criteria.

DISTRICT 5

- Community Plan Areas

- Black Mountain Ranch
- Carmel Valley (partial – portion north of State Route 56)
- Fairbanks Ranch Country Club
- NFCUA Subarea II
- Pacific Highlands Ranch
- Rancho Bernardo
- Rancho Peñasquitos
- San Pasqual
- Torrey Highlands
- Torrey Pines (partial – portion north of Carmel Valley Road)
- Via de la Valle

- Neighborhoods

- Black Mountain Ranch
- Carmel Valley (partial – portion north of State Route 56 and several census blocks in the eastern part of Carmel Valley south of State Route 56)
- Del Mar Heights
- North City
- Rancho Bernardo
- Rancho Peñasquitos
- San Pasqual
- Torrey Highlands

- Demographics

- Total population: 159,829
- Deviation: +3.49% (+5,396 people)
- Historical: Approximately 62.8% of the population to be included in the new District 5 is presently included in the current District 5.

- Contiguity

The district is geographically contiguous. San Pasqual, Rancho Bernardo, and Rancho Peñasquitos are connected north and south by Interstate 15. State Route 56 connects Rancho Peñasquitos, Carmel Valley, and Torrey Highlands east and west. Del Mar

Heights Road and Carmel Valley Road connect Del Mar Heights and Carmel Valley. North City is connected to Carmel Valley by El Camino Real.

- Findings and Reasons for Adoption

- Per the 2020 census data, District 5 started out having a population of 158,760 and was over the ideal district size with a deviation of +2.80%.
- The Commission determined that the neighborhoods in this district share similar socioeconomic factors.
- In accordance with public testimony, a group of neighborhoods was kept together based upon the community of interest formed by their inclusion in the Poway Unified School District. There was also public testimony requesting that Park Village be reunited with Rancho Peñasquitos and to keep Torrey Highlands in District 5.
- This district contains the northernmost portion of the city.
- To balance population, the southeastern neighborhoods of the current District 5 were moved to District 7. The southern part of Carmel Valley was moved to District 6 to also balance population.
- The district is geographically compact to the extent possible, recognizing that the City's north and east boundaries have jagged lines and while balancing the other criteria and community of interest boundaries. The district does not bypass population unless required to equalize population.

DISTRICT 6

- Community Plan Areas

- Carmel Valley (partial – portion south of State Route 56, excluding several census blocks in the eastern part of Carmel Valley south of State Route 56)
- Del Mar Mesa
- Kearny Mesa (partial – portion west of State Route 163)
- Los Peñasquitos Canyon Preserve
- Military Facilities (partial – portion west of Interstate 15)
- Mira Mesa
- Torrey Hills
- University (partial – portion north of Rose Canyon)

- Neighborhoods

- Carmel Valley (partial – portion south of State Route 56, excluding several census blocks in the eastern part of Carmel Valley south of State Route 56)
- Kearny Mesa (partial – portion west of State Route 163)
- Miramar
- Mira Mesa
- Rancho Peñasquitos (partial – southeastern portion)
- Scripps Ranch (partial – portion east of Interstate 15)
- Sorrento Valley

- Torrey Hills
- Torrey Pines
- Torrey Preserve
- University City (partial – portion north of Rose Canyon)
- Demographics
 - Total population: 160,841
 - Deviation: +4.15% (+6,408 people)
 - Historical: Approximately 54.2% of the population to be included in the new District 6 is presently included in the current District 6.
- Contiguity

The district is geographically contiguous. There is reasonable access between population centers in the district. Mira Mesa, Miramar, and Kearny Mesa are connected north and south by Interstate 15 and transition to State Route 163. Sorrento Valley, Miramar, University City, and Kearny Mesa are connected by Interstate 805. Torrey Pines, University City, and Miramar are connected by Miramar Road/La Jolla Village Drive. Carmel Valley, Torrey Preserve, Torrey Hills, Sorrento Valley, and University City are connected north and south by Interstate 5.
- Findings and Reasons for Adoption
 - Per the 2020 census data, District 6 started out having a population of 152,358 and was under the ideal district size with a deviation of -1.34%.
 - The Commission determined that there is a community of interest among the Asian population in this district that shares business interests, cultural activities, and social ties and concerns. The Asian population is sufficiently geographically compact to comprise 40.7% of the district's population (the largest in the City) and a CVAP of 34.82%, thus combining neighborhoods to provide fair and effective representation to the community, insofar as practicable while balancing the Commission's other redistricting goals and adhering to redistricting law and principles.
 - In recognition of its cultural significance to the Asian community, the Commission decided to keep the Convoy District in District 6.
 - There was significant testimony from students attending the University of California San Diego (UCSD) and other community members seeking to move UCSD and University City to this district; there was also testimony that University City should be kept whole and has a connection with UCSD and La Jolla. The Commission determined UCSD and the northern portion of University City should move to District 6.
 - To maintain two coastal districts, the Commission included Torrey Pines and Torrey Preserve in District 6
 - A common area of interest to many of the communities in this district is MCAS Miramar, referred to in District as Military Facilities. These communities include

enlisted personnel and their families as well as social, business, and commercial interests surrounding MCAS Miramar.

- The Commission determined that because of its large population, it was impractical to include all of University City in this district. The Commission also heard public testimony from many University City residents that if it had to be split, that it be split north-south by Rose Canyon.
- The inclusion of Kearny Mesa east of State Route 163 was included in part due to testimony concerning keeping areas around the Montgomery-Gibbs Executive Airport in one district. It also recognizes the interface between commercial and industrial development.
- The district is geographically compact to the extent possible while balancing the other criteria and community of interest boundaries. The district does not bypass population unless required to unite communities of interest or otherwise achieve other criteria.

DISTRICT 7

- Community Plan Areas

- Carmel Mountain Ranch
- East Elliott
- Military Facilities
- Miramar Ranch North
- Mission Valley (partial – portion east of Interstate 805)
- Navajo
- Rancho Encantada
- Sabre Springs
- Scripps Miramar Ranch
- Tierrasanta

- Neighborhoods

- Allied Gardens
- Birdland
- Carmel Mountain Ranch
- Del Cerro
- Grantville
- Lake Murray (East San Carlos)
- Miramar Ranch North
- Mission Valley East (partial – portion east of Interstate 805)
- Qualcomm
- Rancho Encantada
- Sabre Springs
- San Carlos
- Tierrasanta

- Demographics

- Total population: 153,847
- Deviation: -0.38% (+586 people)
- Historical: Approximately 62.0% of the population to be included in the new District 7 is included in the current District 7.

- Contiguity

The district is geographically contiguous. There is reasonable access between population centers in the district. Carmel Mountain Ranch, Sabre Springs, Miramar Ranch, Scripps Ranch, Tierrasanta, Grantville, Kearny Mesa, Qualcomm, and Mission Valley East are connected north and south by Interstate 15. Grantville, Allied Gardens, San Carlos, and Lake Murray are connected east and west by Friars Road/Mission Gorge Road. Navajo Road connects Allied Gardens, Del Cerro, and San Carlos. Tierrasanta, and Mission Trails Regional Park are connected east and west by State Route 52.

- Findings and Reasons for Adoption

- Per the 2020 census data, District 7 started out having a population of 159,500 and was over the ideal district size with a deviation of +3.28%.
- The Commission determined that Mission Trails Regional Park and the communities that surround it, including Tierrasanta, Lake Murray, and San Carlos, form a community of interest based on their close connection to the park and should be kept together.
- Carmel Mountain Ranch, Sabre Springs, Miramar Ranch North, Scripps Ranch, and Rancho Encantada were moved from District 5 to District 7 because they are in the eastern part of the city, were contiguous with the communities to the south along Interstate 15, and to equalize population.
- Tierrasanta and Navajo residents testified that they are also a community of interest, along with Allied Gardens, Del Cerro, San Carlos, and Grantville.
- The district is geographically compact to the extent possible while balancing the other criteria and community of interest boundaries. The district does not bypass population unless required to unite communities of interest or otherwise achieve other redistricting criteria.

DISTRICT 8

- Community Plan Areas

- Barrio Logan
- Centre City/Downtown (partial – portion south of Commercial Street and Park Boulevard)
- Military Facilities
- Otay Mesa
- Otay Mesa-Nestor
- San Ysidro

- Southeastern San Diego (partial – portion west of Interstate 15, south of National Avenue and west of S. 43rd Street)
 - Tijuana River Valley
- Neighborhoods
 - Barrio Logan
 - Border
 - Egger Highlands
 - Grant Hill
 - Logan Heights
 - Nestor
 - Ocean Crest
 - Otay Mesa
 - Otay Mesa West
 - Palm City
 - San Ysidro
 - Shelltown
 - Sherman Heights
 - Southcrest
 - Stockton
 - Tijuana River Valley
- Demographics
 - Total population: 155,397
 - Deviation: +0.62% (+964 people)
 - Historical: 96.0% of the population to be included in the new District 8 is presently included in the current District 8.
- Contiguity

The district is geographically contiguous to the extent possible because of the need to equalize the population and to connect population in the South Bay to population in the north. There is reasonable access between population centers in the district. Grant Hill, Logan Heights, Barrio Logan, Shelltown, Otay Mesa-Nestor, and the Tijuana River Valley are connected north and south by Interstate 5. Otay Mesa-Nestor and Otay Mesa are connected north and south by Interstate 805 and east and west by State Route 905.
- Findings and Reasons for Adoption
 - Per the 2020 census data, District 8 started out having a population of 149,314 and was under the ideal district size with a deviation of -3.32%.
 - The Commission recognized that this district has very unique geography, which drives the district boundaries. The configuration requires that the South Bay be connected to communities to the north through a bay corridor under San Diego Bay, as historically has been the case. The district is geographically compact to the extent possible. It must bypass population of other cities to reach from the southern portion to the northern portion of the district.

- The Commission left the South Bay portion of the existing district intact. The Commission did not wish to fragment or dilute the Latino population and voting population and recognized and wished to respect the fact that this is a geographically compact population that is sufficiently large to form a majority-minority Latino Council District, as it has for many years. The new District 8 will include a population that is 75.9% Latino, 9.2% White, 4.6% Black, and 7.3% Asian. The CVAP of the district is 67.3% Latino.
- The Commission also determined that the South Bay communities should remain together in one district because of common socioeconomic data and communities of interest.
- In order to balance the population, the Commission joined the South Bay with a portion of the City to the north and included Shelltown. In response to community testimony, the neighborhood of Southcrest was added to District 8 from its current location in District 9.
- The Commission wished to keep the Historic Barrio District together, including Barrio Logan, Sherman Heights, Logan Heights, Grant Hill, Stockton, and Memorial. The proposed District 8 also reflects an intention not to connect these communities with the Downtown business and commercial interests, because their interests are not the same as those of the Historic Barrio District. The community also requested that part of the Downtown Community Planning Area around the 10th Avenue terminal be included in District 8, due to the traffic, pollution, and related environmental impacts on Barrio Logan.
- Natural boundaries include State Route 94 and the city limits.
- The San Diego Bay corridor between Imperial Beach and Chula Vista connects the southern and northern part of the district.

DISTRICT 9

- Community Plan Areas
 - City Heights (partial – excludes Ridgeview neighborhood)
 - College Area
 - Eastern Area (partial – neighborhoods of Rolando and El Cerrito,)
 - Kensington-Talmadge
 - Normal Heights
 - Southeastern (partial – neighborhoods of Mount Hope and western part of Mountain View)
- Neighborhoods
 - Adams North
 - Azalea/Hollywood Park
 - Castle
 - Cherokee Point

- Chollas Creek
 - Colina del Sol
 - College East
 - College West
 - Corridor
 - El Cerrito
 - Fairmont Park
 - Fairmont Village
 - Fox Canyon
 - Islenair
 - Kensington
 - Mount Hope
 - Mountain View (partial – western portion)
 - Normal Heights
 - Rolando
 - Swan Canyon
 - Talmadge
 - Teralta East
 - Teralta West
- Demographics
 - Total population: 148,841
 - Deviation: -3.62% (-5,592 people)
 - Historical: 89.6% of the population to be included in the new District 9 is presently included in City Council District 9.
- Contiguity

The district is geographically contiguous. There is reasonable access between population centers in the district. Adams North, Normal Heights, Kensington, Corridor, Teralta West, Cherokee Point, Castle, Azalea/Hollywood Park, and Fairmont Park are connected north and south by Interstate 15. Normal Heights, Corridor, Kensington, Talmadge, Colina del Sol, College East, College West, Teralta East, Teralta West, El Cerrito, and Rolando are connected east and west by El Cajon Boulevard and University Avenue. Adams North, Normal Heights, Corridor, Cherokee Point, Castle, Azalea, Fairmont Park, and Mount Hope are connected north and south by Interstate 15. Mount Hope and Mountain View are connected by Interstate 15 and Boundary Street.
- Findings and Reasons for Adoption
 - Per the 2020 census data, District 9 started out having a population of 146,204 and was under the ideal district size with a deviation of -5.33%.
 - The Commission heard testimony concerning keeping neighborhoods along University Avenue and El Cajon Boulevard east of Interstate 805 together as far

as possible, with these neighborhoods stating they formed a Community of Interest along those corridors.

- The Commission moved the Normal Heights Community Planning Area from District 3 to District 9. Testimony from residents of this area requested that the Community Planning Area be kept intact, either in District 3 or District 9. Because District 3 was the only district out of Districts 3, 4, 8, and 9 south of Interstate 8 that was above the target district size population, the move helped to balance populations among the four districts and reduce the total deviation of the Preliminary Map. This area is also wholly east of Interstate 805, creating a discrete boundary between District 3 and District 9, using the Interstate as the demarcation line.
- The district has a large population of immigrants, from many parts of the world, including Latin America, East Africa, and Southeast Asia, presenting unique needs in the community. The district also has a large number of low-income residents, kept together with the new immigrants because of their shared economic interests, including affordable housing, jobs, economic development, access to facilities like parks, libraries, and transit.
- Natural boundaries include Interstate 8 partially, Interstate 805, the city limits and part of State Route 94.
- The district includes a majority-minority Latino population, representing 44.6% of the total population. The district remains diverse in ethnicity, with a large Latino population as well as significant Black and Asian populations. The district's population is 44.6% Latino; 27.5% White; 10.1% Black; and 12.5% Asian, compared with its current population of 48.2% Latino, 23.7 White, 10.4% Black, and 12.8% Asian. The Latino CVAP for this district is 31.45%.
- The district is geographically compact to the extent possible while balancing the other criteria and community of interest boundaries.

VOTE ON THE PRELIMINARY PLAN AND UPCOMING HEARINGS

The vote of the Commissioners on the Preliminary Plan on November __, 2021 was as follows:

- Voting "yes" for the Preliminary Plan as submitted: Commissioners [include Commissioner names]
- Voting "no" for the Preliminary Plan as submitted: Commissioners [include Commissioner names]

In accordance with the requirements of the San Diego City Charter, the Redistricting Commission will now convene five public hearings in the 30 days after the filing of this Plan and before a Final Redistricting Plan is adopted by the Commission. The Redistricting Commission may make changes to this Preliminary Plan and filing statement or may adopt it as is. The Final Redistricting Plan shall be effective 30 days after adoption and shall be subject to the right of referendum in the same manner as are ordinances of the City Council. If rejected by referendum, the same Redistricting Commission shall create a new plan pursuant to the criteria set forth in Sections 5 and 5.1 of the San Diego City Charter.

The members of the City of San Diego 2020 Redistricting Commission thank the public for its participation and appreciate the public comment from the many residents of the City of San Diego who participated in the redistricting process.

Respectfully submitted,

Thomas Hebrank

Chair of the City of San Diego 2020 Redistricting Commission

On 2020 Redistricting Commission:

Val Hoy

Frederick W. Kosmo, Jr.

Roy MacPhail

Ken Malbrough

Alan Nevin

Justine Nielsen

Monica Hernandez

Thomas Hebrank

Kristen Roberts

PRELIMINARY REDISTRICTING PLAN COMMUNITY PLANNING AREAS AND NEIGHBORHOODS BY DISTRICT

—DISTRICT 1—

<u>Community Planning Areas</u>	<u>Neighborhoods</u>
La Jolla	La Jolla (partial – portion south of La Jolla Village Drive, west of Gilman Drive)
Midway-Pacific Highway	La Playa
Mission Bay Park	Loma Portal
Mission Beach	Midway District
Ocean Beach	Mission Bay
Pacific Beach	Mission Beach
Peninsula	Ocean Beach
University (partial – southern portion)	Pacific Beach
	Point Loma Heights
	Roseville/Fleetridge
	Sunset Cliffs
	University City (partial – portion south of Rose Canyon)
	Wooded Area

—DISTRICT 2—

<u>Community Planning Areas</u>	<u>Neighborhoods</u>
Clairemont Mesa	Bay Ho
Kearny Mesa (partial – portion east of State Route 163)	Bay Park
Linda Vista	Birdland
Mission Valley (partial – portion north of Friars Road and east of State Route 163)	Clairemont Mesa East
Serra Mesa	Clairemont Mesa West
	Kearny Mesa (partial – portion east of State Route 163)
	Mission Valley East (partial – portion north of Friars Road)
	Linda Vista
	Morena
	North Clairemont
	Serra Mesa

**PRELIMINARY REDISTRICTING PLAN COMMUNITY PLANNING
AREAS AND NEIGHBORHOODS BY DISTRICT
—DISTRICT 3—**

<u>Community Planning Areas</u>	<u>Neighborhoods</u>	
Balboa Park	Balboa Park	Midtown
Centre City/Downtown (excluding 10th Avenue terminal)	Bankers Hill	Mission Hills
Greater Golden Hill	Burlingame	Mission Valley East (partial – southern portion)
North Park	Core-Columbia	Mission Valley West
Midway – Pacific Highway (partial – southeastern portion)	Cortez Hill	North Park
Mission Valley (partial – southwestern portion)	East Village	Old Town
Old Town San Diego	Gaslamp Quarter	Park West
Uptown	Golden Hill	Petco Park
	Grant Hill (partial – portion north of State Route 94)	Sherman Heights (partial – portion north of State Route 94)
	Harbor View	South Park
	Hillcrest	Stockton (partial – portion north of State Route 94)
	Horton Plaza	University Heights
	Little Italy	
	Marina	

—DISTRICT 4—

<u>Community Planning Areas</u>	<u>Neighborhoods</u>	
City Heights (partial – Ridgeview neighborhood)	Alta Vista	Mountain View
Encanto Neighborhoods	Bay Terraces	(partial – portion east of Boundary Street, S. 40th Street, San Pasqual Street, and S. 43rd Street)
Eastern Area (partial – neighborhoods of Oak Park Redwood Village, Rolando Park, and Webster)	Broadway Heights	Oak Park
Skyline-Paradise Hills	Chollas View	O-Farrel
Southeastern San Diego (partial – portions east of Boundary Street, S. 40th Street, San Pasqual Street, and S. 43rd Street, south of K Street)	Emerald Hills	Paradise Hills
	Encanto	Redwood Village
	Jamacha	Ridgeview
	Lincoln Park	Rolando Park
	Lomita	Skyline
		Valencia Park

PRELIMINARY REDISTRICTING PLAN COMMUNITY PLANNING AREAS AND NEIGHBORHOODS BY DISTRICT

—DISTRICT 5—

Community Planning Areas

Black Mountain Ranch
Carmel Valley (partial – portion north of State Route 56)
Fairbanks Ranch Country Club
NFCUA Subarea II
Pacific Highlands Ranch
Rancho Bernardo
Rancho Peñasquitos
San Pasqual
Torrey Highlands
Torrey Pines (partial – portion north of Carmel Valley Road
Via de la Valle

Neighborhoods

Black Mountain Ranch
Carmel Valley (partial – portion north of State Route 56 and several census blocks in the eastern part of Carmel Valley south of State route 56)
Del Mar Heights
North City
Rancho Bernardo
Rancho Peñasquitos
San Pasqual
Torrey Highlands

—DISTRICT 6—

Community Planning Areas

Carmel Valley (partial – portion south of State Route 56, excluding several census blocks in the eastern part of Carmel Valley south of State route 56)
Del Mar Mesa
Kearny Mesa (partial – portion west of State Route 163)
Los Peñasquitos Canyon Preserve
Military Facilities (partial – portion west of Interstate 15)
Mira Mesa
Torrey Hills
University (partial – portion north of Rose Canyon)

Neighborhoods

Carmel Valley (partial – portion south of State Route 56, excluding several census blocks in the eastern part of Carmel Valley south of State Route 56)
Kearny Mesa (partial – portion to the west of State Route 163)
Miramar
Mira Mesa
Rancho Peñasquitos (partial – southeastern portion)
Sorrento Valley)
Torrey Hills
Torrey Pines
Torrey Preserve
University City (partial – portion north of Rose Canyon)

PRELIMINARY REDISTRICTING PLAN COMMUNITY PLANNING AREAS AND NEIGHBORHOODS BY DISTRICT

—DISTRICT 7—

<u>Community Planning Areas</u>	<u>Neighborhoods</u>
Carmel Mountain Ranch	Allied Gardens
East Elliott	Birdland
Military Facilities	Carmel Mountain Ranch
Miramar Ranch North	Del Cerro
Mission Valley (partial – portion east of Interstate 805)	Grantville
Navajo	Lake Murray (East San Carlos)
Rancho Encantada	Miramar Ranch North
Sabre Springs	Mission Valley East (partial – portion east of Interstate 805)
Scripps Miramar Ranch	Sabre Springs
Tierrasanta	San Carlos
	Tierrasanta

—DISTRICT 8—

<u>Community Planning Areas</u>	<u>Neighborhoods</u>
Barrio Logan	Barrio Logan
Centre City/Downtown (partial – portion south of Commercial Street and Park Boulevard)	Otay Mesa
Otay Mesa	Otay Mesa West
Otay Mesa-Nestor	Palm City
San Ysidro	San Ysidro
Southeastern San Diego (partial – portion west of Interstate 15, south of National Avenue and west of S. 43rd Street)	Shelltown
Tijuana River Valley	Sherman Heights
	Southcrest
	Stockton
	Tijuana River Valley

**PRELIMINARY REDISTRICTING PLAN COMMUNITY PLANNING
AREAS AND NEIGHBORHOODS BY DISTRICT****—DISTRICT 9—**

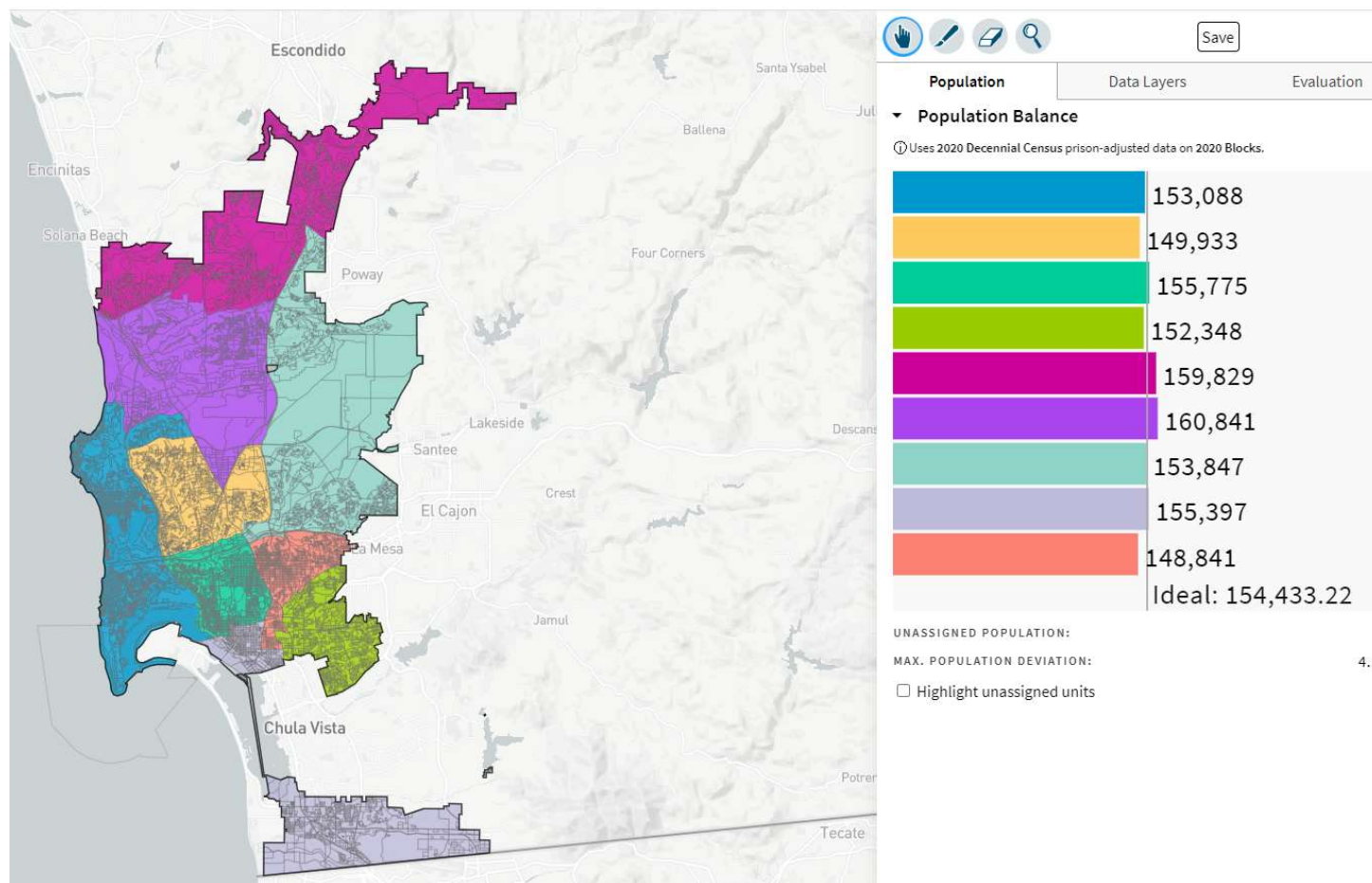
<u>Community Planning Areas</u>	<u>Neighborhoods</u>
City Heights (partial – excludes the Ridgeview neighborhood)	Adams North
College Area	Azalea Park
Eastern Area	Castle
(partial – neighborhoods of Rolando and El Cerrito)	Cherokee Point
Kensington-Talmadge	Chollas Creek
Normal Heights	Colina del Sol
Southeastern (partial – neighborhoods of Mount Hope and western part of Mountain View)	College East
	College West
	Corridor
	El Cerrito
	Fairmont Park
	Fairmont Village
	Fox Canyon
	Hollywood Park
	Islenair
	Kensington
	Mount Hope
	Mountain View (partial – western portion)
	Normal Heights
	Rolando
	Swan Canyon
	Talmadge
	Teralta East
	Teralta West

San Diego Communities Collaboration Map

Link to map:

<https://portal.sandiego-mapping.org/submission/p6242>

<https://districtr.org/plan/72602?portal>



Methodology

This Map was submitted to the City of San Diego redistricting portal on 10/29/2021 by Alex Villafuerte. The Submission Reads:

- Reunite Clairemont Mesa in one district after 20+ years, and put it together with Linda Vista and Serra Mesa.

- Reunite Rancho Penasquitos in one district after 10 years, and put it together with Torrey Highlands and Black Mountain Ranch.

Mira Mesa and the Convoy District in Kearny Mesa is in one district, the AAPI empowerment district.

- UCSD and all of North University City is with District 6 to create a student & AAPI empowerment district. Rose Canyon is the natural boundary to the south.

- An AAPI empowerment district that is 42% Asian by population.

Population and Deviation

District	Total Population	Raw Deviation	% Deviation
1	153,088	(1,345)	-0.87%
2	149,933	(4,500)	-2.91%
3	155,775	1,342	0.87%
4	152,348	(2,085)	-1.35%
5	159,829	5,396	3.49%
6	160,841	6,408	4.15%
7	153,847	(586)	-0.38%
8	155,397	964	0.62%
9	148,841	(5,592)	-3.62%
Ideal	154,433.22	Deviation	7.77%

Population Percentage Total

District	% Latino	% Asian	% Black	% White	% AIAN, Hawaiian & PI, Other, 2+ Races
1	14.23%	5.40%	2.24%	70.40%	7.72%
2	24.08%	14.94%	4.29%	49.02%	7.67%
3	23.62%	7.07%	5.60%	56.74%	6.97%
4	45.50%	22.56%	15.63%	11.04%	5.26%
5	10.50%	28.62%	1.68%	51.94%	7.26%
6	14.36%	40.68%	3.06%	35.19%	6.71%
7	15.61%	17.11%	4.25%	54.73%	8.30%
8	75.86%	7.31%	4.60%	9.25%	2.98%
9	44.62%	12.51%	10.11%	27.52%	5.25%

Population Percentage VAP

District	VAP % Latino	VAP % Asian	VAP % Black	VAP % White	VAP % AIAN, Hawaiian & PI, Other, 2+ Races
1	12.98%	5.60%	2.23%	72.61%	6.58%
2	21.71%	15.91%	4.16%	51.61%	6.61%
3	21.91%	7.45%	5.55%	58.80%	6.29%
4	42.18%	24.65%	16.09%	12.47%	4.61%
5	9.40%	28.15%	1.75%	55.31%	5.40%
6	13.49%	41.11%	3.15%	36.81%	5.45%
7	14.10%	17.39%	4.25%	57.76%	6.50%
8	73.02%	8.31%	5.04%	10.81%	2.81%
9	40.81%	13.22%	9.56%	31.32%	5.09%

Population Percentage CVAP

District	CVAP % Latino	CVAP % Asian	CVAP % Black	CVAP % White	CVAP % AIAN, Hawaiian & PI, Other, 2+ Races
1	11.46%	4.85%	2.73%	77.38%	3.58%
2	18.69%	13.64%	4.51%	59.41%	3.75%
3	19.70%	5.70%	6.43%	64.77%	3.40%
4	35.38%	23.00%	21.46%	15.99%	4.17%
5	9.11%	20.55%	2.12%	63.89%	4.33%
6	12.71%	34.82%	3.58%	43.77%	5.11%
7	13.18%	14.28%	4.51%	64.60%	3.43%
8	67.30%	9.61%	6.32%	14.05%	2.71%
9	31.45%	12.54%	11.70%	40.92%	3.39%

Compactness

[Understanding Compactness](#)

District	Perimeter	Area_Sq_Mi	Polsby_Popper	Schwartzberg	Convex_Hull	Reock
1	55.5	43	0.1742	0.4174	0.4475	0.1124
2	26.3	26	0.4763	0.6901	0.1842	0.0663
3	20.2	16	0.4982	0.7058	0.8777	0.5828
4	27.1	18	0.3066	0.5537	0.7822	0.5484
5	94.7	62	0.087	0.2949	0.4595	0.148
6	38.4	52	0.4462	0.668	0.7817	0.4972
7	60.6	73	0.2502	0.5002	0.7162	0.3638
8	53.3	38	0.1662	0.4077	0.3903	0.1534
9	22.7	13	0.3157	0.5618	0.661	0.3313
Avg			0.3023	0.5333	0.5889	0.3115

Splits Summary

Community Planning Areas		Neighborhoods	
Split across number of districts	Number of CPAs	Split across number of districts	Number of NEIGHBORHOODs
1	40	1	95
2	13	2	23
3	6	3	7
		7	1

How to Read Map Reports

Full reports from the Haystaq-created draft maps, as well as community-submitted district plans (through 10/12) can be found on the city website as Excel files. These reports were created by proprietary python code written by HaystaqDNA. Here is a basic primer on the components/tabs of these reports:

Maps:

These are just images from the city's Districtr hosted website of each map.

Populations:

When we create a plan or export a plan from Districtr, we export it as a 'block equivalency file'. Basically the U.S. Census divided all of the geography of the City of San Diego up into 'blocks'. At its most basic, a block can correspond to a city block, but the census will also use permanent geographic features (a waterway, a canyon, a ridge, a highway) to define a block. The census then published population and demographic data associated with each block (a P.L 94-171 file). Then the Statewide Database on behalf of the state of California takes that PL file and does prisoner reallocation and reassigns in-state prisoners back to their original blocks. To create the 'Populations' report we match up the blocks of each district with the blocks in this file and summarize all of the population within this district.

Defining some of the abbreviations: NL = non-Latino, AIAN=American Indian and Alaskan Native, VAP = Voting Age Population (age 18+), CVAP19 = 2019 Citizen Voting Age Population (an estimate of eligible voters).

Deviations are calculated against an ideal population of each district. To find the ideal population we simply divide the population of San Diego (1,389,899) by the number of districts(9) to find 154,433. The raw deviation is how far off this number a district population is. The final deviation number is found by adding the absolute value of the lowest negative deviation to the highest absolute value of the highest positive deviation. Example: District 9 has the lowest negative deviation of -3.06%. District 5 has the highest positive deviation of 2.80%. So the final deviation is 3.06%+ 2.80% = 5.86%

Components:

The Component report is a list of all of the Community Planning Areas and Neighborhoods and their populations that make up a district.

OldDistrict:

This report lists what existing city council districts and their populations make up the new proposed districts.

Compactness:

For more information on the math behind compactness measures, here is a good resource: <https://fisherzachary.github.io/public/r-output.html>. For these tests, the closer the score is to 1, the more compact the district, and the closer to 0, the less compact the district is.

Splits

There are two versions of the splits report. One that looks at how many districts each Community Planning Association is in and one that looks at how many districts each Neighborhood is in.

Community Splits:

'Military Facilities', 'Reserve' and 'Not Identified' show up as splits, mostly because there are multiple areas with those names. They will show up as splits on almost every map.

Keep in mind physical geography when looking at neighborhood and CPA splits. For example, Los Penasquitos Canyon will show a 0 population split on some maps. This is because there is a very long and very narrow canyon that extends eastward from the community. It falls between Park Village and Mira Mesa and has 0 population. In many of the maps for reasons of compactness we will place this canyon in a different district than the area with residents.

Neighborhood Splits:

Specifically regarding neighborhood splits: when we reduced the number of splits on the map we optimized for CPAs. Many times CPAs and Neighborhoods follow similar but not identical boundaries. Often the CPA will have its line on one side of a highway and the neighborhood the other. So there are 'many' neighborhoods that will show 0 population splits. We hold that in general you should ignore the 0 population splits.

Part of Old District

New District	Original Districts	Total Population		New District	Original Districts	Total Population
1	2	109,167		5	5	100,373
1	1	43,921		5	1	49,224
1	3	-		5	6	10,232
1	7	-		6	6	87,330
2	7	55,114		6	1	73,511
2	6	54,796		6	5	-
2	2	40,023		6	7	-
2	1	-		7	7	95,430
2	8	-		7	5	58,387
3	3	146,057		7	3	30
3	7	8,956		7	6	-
3	2	762		8	8	149,313
3	8	-		8	9	6,084
3	9	-		8	3	-
4	4	145,708		9	9	133,480
4	9	6,640		9	3	15,361
				9	4	-
				9	7	-

Components

Dist	NAME	Pop	Type	Dist	NAME	Pop	Type
1	PENINSULA	41,276	COMMUNITY	5	RANCHO PENASQUITOS	43,018	COMMUNITY
1	PACIFIC BEACH	40,658	COMMUNITY	5	RANCHO BERNARDO	42,902	COMMUNITY
1	LA JOLLA	29,783	COMMUNITY	5	CARMEL VALLEY	26,005	COMMUNITY
1	UNIVERSITY	14,289	COMMUNITY	5	BLACK MOUNTAIN RANCH	15,795	COMMUNITY
1	OCEAN BEACH	12,922	COMMUNITY	5	PACIFIC HIGHLANDS RANCH	14,379	COMMUNITY
1	MIDWAY-PACIFIC HIGHWAY	6,807	COMMUNITY	5	TORREY HIGHLANDS	8,678	COMMUNITY
1	MISSION BEACH	3,292	COMMUNITY	5	TORREY PINES	6,745	COMMUNITY
1	NOT IDENTIFIED	2,264	COMMUNITY	5	NCFUA SUBAREA II	766	COMMUNITY
1	MISSION BAY PARK	1,688	COMMUNITY	5	FAIRBANKS RANCH COUNTRY CLUB	468	COMMUNITY
1	RESERVE	109	COMMUNITY	5	VIA DE LA VALLE	459	COMMUNITY
1		-	COMMUNITY	5	DEL MAR MESA	359	COMMUNITY
1	DOWNTOWN	-	COMMUNITY	5	SAN PASQUAL	212	COMMUNITY
1	PACIFIC BEACH	40,617	NEIGHBORHOOD	5	RESERVE	43	COMMUNITY
1	LA JOLLA	29,964	NEIGHBORHOOD	5	LOS PENASQUITOS CANYON	-	COMMUNITY
1	POINT LOMA HEIGHTS	20,238	NEIGHBORHOOD	5	TORREY HILLS	-	COMMUNITY
1	UNIVERSITY CITY	14,289	NEIGHBORHOOD	5	RANCHO PENASQUITOS	44,430	NEIGHBORHOOD
1	OCEAN BEACH	12,289	NEIGHBORHOOD	5	RANCHO BERNARDO	42,925	NEIGHBORHOOD
1	MIDWAY DISTRICT	7,799	NEIGHBORHOOD	5	CARMEL VALLEY	33,658	NEIGHBORHOOD
1	LOMA PORTAL	5,996	NEIGHBORHOOD	5	BLACK MOUNTAIN RANCH	17,392	NEIGHBORHOOD
1	ROSEVILLE / FLEET RIDGE	5,884	NEIGHBORHOOD	5	NORTH CITY	8,471	NEIGHBORHOOD
1	WOODED AREA	3,703	NEIGHBORHOOD	5	DEL MAR HEIGHTS	6,736	NEIGHBORHOOD
1	SUNSET CLIFFS	3,531	NEIGHBORHOOD	5	TORREY HIGHLANDS	6,028	NEIGHBORHOOD
1	MISSION BEACH	3,460	NEIGHBORHOOD	5	SAN PASQUAL	189	NEIGHBORHOOD
1	LA PLAYA	2,367	NEIGHBORHOOD	5		-	NEIGHBORHOOD
1		2,261	NEIGHBORHOOD	5	MIRA MESA	-	NEIGHBORHOOD
1	MISSION BAY	582	NEIGHBORHOOD	5	TORREY PRESERVE	-	NEIGHBORHOOD
1	TORREY PINES	108	NEIGHBORHOOD	6	MIRA MESA	77,935	COMMUNITY
1	BAY HO	-	NEIGHBORHOOD	6	UNIVERSITY	54,997	COMMUNITY
1	MARINA	-	NEIGHBORHOOD	6	CARMEL VALLEY	9,884	COMMUNITY
1	MISSION HILLS	-	NEIGHBORHOOD	6	MILITARY FACILITIES	8,008	COMMUNITY
1	NORTH CLAIREMONT	-	NEIGHBORHOOD	6	TORREY HILLS	6,916	COMMUNITY
1	SORRENTO VALLEY	-	NEIGHBORHOOD	6	KEARNY MESA	1,371	COMMUNITY
2	CLAIREMONT MESA	79,768	COMMUNITY	6	DEL MAR MESA	1,050	COMMUNITY

2	LINDA VISTA	35,647	COMMUNITY
2	SERRA MESA	18,376	COMMUNITY
2	KEARNY MESA	10,798	COMMUNITY
2	MISSION VALLEY	5,344	COMMUNITY
2		-	COMMUNITY
2	OTAY MESA	-	COMMUNITY
2	CLAIREMONT MESA EAST	25,866	NEIGHBORHOOD
2	SERRA MESA	25,640	NEIGHBORHOOD
2	LINDA VISTA	24,263	NEIGHBORHOOD
2	BAY PARK	16,957	NEIGHBORHOOD
2	NORTH CLAIREMONT	14,915	NEIGHBORHOOD
2	BAY HO	12,244	NEIGHBORHOOD
2	MORENA	10,897	NEIGHBORHOOD
2	CLAIREMONT MESA WEST	10,273	NEIGHBORHOOD
2	BIRDLAND	4,737	NEIGHBORHOOD
2	KEARNY MESA	4,117	NEIGHBORHOOD
2	MISSION VALLEY EAST	24	NEIGHBORHOOD
2		-	NEIGHBORHOOD
2	OCEAN CREST	-	NEIGHBORHOOD
3	NORTH PARK	46,715	COMMUNITY
3	DOWNTOWN	44,083	COMMUNITY
3	UPTOWN	39,026	COMMUNITY
3	GREATER GOLDEN HILL	14,307	COMMUNITY
3	MISSION VALLEY	9,031	COMMUNITY
3	OLD TOWN SAN DIEGO	1,234	COMMUNITY
3	MIDWAY-PACIFIC HIGHWAY	762	COMMUNITY
3	BALBOA PARK	617	COMMUNITY
3	MID-CITY:NORMAL HEIGHTS	-	COMMUNITY
3	NORTH PARK	38,693	NEIGHBORHOOD
3	EAST VILLAGE	16,088	NEIGHBORHOOD
3	HILLCREST	14,961	NEIGHBORHOOD
3	UNIVERSITY HEIGHTS	12,276	NEIGHBORHOOD
3	GOLDEN HILL	9,081	NEIGHBORHOOD
3	CORE-COLUMBIA	9,035	NEIGHBORHOOD
3	PARK WEST	8,751	NEIGHBORHOOD
3	MARINA	7,190	NEIGHBORHOOD
3	MISSION HILLS	6,548	NEIGHBORHOOD
6	LOS PENASQUITOS CANYON	606	COMMUNITY
6	TORREY PINES	74	COMMUNITY
6	MIRA MESA	73,843	NEIGHBORHOOD
6	UNIVERSITY CITY	38,005	NEIGHBORHOOD
6	CARMEL VALLEY	18,456	NEIGHBORHOOD
6	TORREY PINES	10,976	NEIGHBORHOOD
6	MIRAMAR	8,346	NEIGHBORHOOD
6	LA JOLLA	5,962	NEIGHBORHOOD
6	SORRENTO VALLEY	3,870	NEIGHBORHOOD
6	KEARNY MESA	1,371	NEIGHBORHOOD
6	TORREY PRESERVE	12	NEIGHBORHOOD
6		-	NEIGHBORHOOD
6	CLAIREMONT MESA EAST	-	NEIGHBORHOOD
6	NORTH CLAIREMONT	-	NEIGHBORHOOD
6	RANCHO PENASQUITOS	-	NEIGHBORHOOD
6	SCRIPPS RANCH	-	NEIGHBORHOOD
6	SERRA MESA	-	NEIGHBORHOOD
7	NAVAJO	53,486	COMMUNITY
7	TIERRASANTA	30,629	COMMUNITY
7	SCRIPPS MIRAMAR RANCH	21,002	COMMUNITY
7	MIRAMAR RANCH NORTH	11,880	COMMUNITY
7	CARMEL MOUNTAIN RANCH	11,207	COMMUNITY
7	MISSION VALLEY	11,206	COMMUNITY
7	SABRE SPRINGS	10,786	COMMUNITY
7	RANCHO ENCANTADA	3,404	COMMUNITY
7	MILITARY FACILITIES	149	COMMUNITY
7	EAST ELLIOTT	98	COMMUNITY
7	RESERVE	-	COMMUNITY
7	TIERRASANTA	27,929	NEIGHBORHOOD
7	SCRIPPS RANCH	20,293	NEIGHBORHOOD
7	LAKE MURRAY	17,388	NEIGHBORHOOD
7	SAN CARLOS	13,494	NEIGHBORHOOD
7	MIRAMAR RANCH NORTH	12,738	NEIGHBORHOOD
7	ALLIED GARDENS	12,020	NEIGHBORHOOD
7	CARMEL MOUNTAIN	11,207	NEIGHBORHOOD
7	SABRE SPRINGS	10,786	NEIGHBORHOOD
7	GRANTVILLE	10,682	NEIGHBORHOOD

3	MISSION VALLEY EAST	6,351	NEIGHBORHOOD
3	SOUTH PARK	5,391	NEIGHBORHOOD
3	MIDTOWN	4,568	NEIGHBORHOOD
3	LITTLE ITALY	4,108	NEIGHBORHOOD
3	CORTEZ	3,943	NEIGHBORHOOD
3	MISSION VALLEY WEST	2,605	NEIGHBORHOOD
3	HARBORVIEW	1,348	NEIGHBORHOOD
3	OLD TOWN	1,127	NEIGHBORHOOD
3	PETCO PARK	885	NEIGHBORHOOD
3	GASLAMP	863	NEIGHBORHOOD
3	BURLINGAME	705	NEIGHBORHOOD
3	HORTON PLAZA	641	NEIGHBORHOOD
3	BALBOA PARK	617	NEIGHBORHOOD
3		-	NEIGHBORHOOD
3	AZALEA/HOLLYWOOD PARK	-	NEIGHBORHOOD
3	CASTLE	-	NEIGHBORHOOD
3	CHEROKEE POINT	-	NEIGHBORHOOD
3	GRANT HILL	-	NEIGHBORHOOD
3	MIDWAY DISTRICT	-	NEIGHBORHOOD
3	NORMAL HEIGHTS	-	NEIGHBORHOOD
3	SHERMAN HEIGHTS	-	NEIGHBORHOOD
3	STOCKTON	-	NEIGHBORHOOD
4	SKYLINE-PARADISE HILLS	67,611	COMMUNITY
4	ENCANTO NEIGHBORHOODS	48,624	COMMUNITY
4	MID-CITY:EASTERN AREA	26,878	COMMUNITY
4	SOUTHEASTERN SAN DIEGO	6,951	COMMUNITY
4	MID-CITY:CITY HEIGHTS	2,284	COMMUNITY
4	BAY TERRACES	31,386	NEIGHBORHOOD
4	PARADISE HILLS	17,263	NEIGHBORHOOD
4	OAK PARK	14,742	NEIGHBORHOOD
4	VALENCIA PARK	10,739	NEIGHBORHOOD
4	JAMACHA LOMITA	10,198	NEIGHBORHOOD
4	ENCANTO	9,520	NEIGHBORHOOD
4	LINCOLN PARK	9,484	NEIGHBORHOOD
4	SKYLINE	8,764	NEIGHBORHOOD
4	MOUNTAIN VIEW	6,951	NEIGHBORHOOD
4	O'FARRELL	6,848	NEIGHBORHOOD
7	DEL CERRO	7,576	NEIGHBORHOOD
7	MISSION VALLEY EAST	5,222	NEIGHBORHOOD
7	RANCHO ENCANTADA	3,404	NEIGHBORHOOD
7	QUALCOMM	1,108	NEIGHBORHOOD
7	KEARNY MESA	-	NEIGHBORHOOD
7	RANCHO PENASQUITOS	-	NEIGHBORHOOD
7	SERRA MESA	-	NEIGHBORHOOD
8	OTAY MESA-NESTOR	61,284	COMMUNITY
8	SOUTHEASTERN SAN DIEGO	33,770	COMMUNITY
8	SAN YSIDRO	28,444	COMMUNITY
8	OTAY MESA	19,494	COMMUNITY
8	MILITARY FACILITIES	7,020	COMMUNITY
8	BARRIO LOGAN	4,222	COMMUNITY
8	TIJUANA RIVER VALLEY	1,077	COMMUNITY
8	DOWNTOWN	86	COMMUNITY
8	NOT IDENTIFIED	-	COMMUNITY
8	OTAY MESA WEST	30,112	NEIGHBORHOOD
8	SAN YSIDRO	28,290	NEIGHBORHOOD
8	NESTOR	16,636	NEIGHBORHOOD
8	OCEAN CREST	16,580	NEIGHBORHOOD
8	LOGAN HEIGHTS	13,725	NEIGHBORHOOD
8	BARRIO LOGAN	11,328	NEIGHBORHOOD
8	EGGER HIGHLANDS	9,564	NEIGHBORHOOD
8	SOUTHCREST	6,084	NEIGHBORHOOD
8	PALM CITY	5,316	NEIGHBORHOOD
8	GRANT HILL	3,939	NEIGHBORHOOD
8	SHELLTOWN	3,913	NEIGHBORHOOD
8	STOCKTON	3,322	NEIGHBORHOOD
8	OTAY MESA	2,914	NEIGHBORHOOD
8	SHERMAN HEIGHTS	2,787	NEIGHBORHOOD
8	TIJUANA RIVER VALLEY	733	NEIGHBORHOOD
8	BORDER	154	NEIGHBORHOOD
8		-	NEIGHBORHOOD
8	MARINA	-	NEIGHBORHOOD
9	MID-CITY:CITY HEIGHTS	66,699	COMMUNITY
9	COLLEGE AREA	24,969	COMMUNITY
9	MID-CITY:NORMAL HEIGHTS	15,361	COMMUNITY

4	RIDGEVIEW/WEBSTER	5,711	NEIGHBORHOOD	9	MID-CITY:KENSINGTON-TALMADGE	14,484	COMMUNITY
4	REDWOOD VILLAGE	4,868	NEIGHBORHOOD	9	MID-CITY:EASTERN AREA	13,752	COMMUNITY
4	CHOLLAS VIEW	4,523	NEIGHBORHOOD	9	SOUTHEASTERN SAN DIEGO	13,559	COMMUNITY
4	EMERALD HILLS	4,395	NEIGHBORHOOD	9		17	COMMUNITY
4	ROLANDO PARK	3,841	NEIGHBORHOOD	9	COLLEGE WEST	11,830	NEIGHBORHOOD
4	ALTA VISTA	2,519	NEIGHBORHOOD	9	COLINA DEL SOL	10,321	NEIGHBORHOOD
4	BROADWAY HEIGHTS	596	NEIGHBORHOOD	9	NORMAL HEIGHTS	10,246	NEIGHBORHOOD
4	MT HOPE	-	NEIGHBORHOOD	9	ROLANDO	10,040	NEIGHBORHOOD
				9	COLLEGE EAST	9,945	NEIGHBORHOOD
				9	TALMADGE	9,443	NEIGHBORHOOD
				9	CASTLE	9,370	NEIGHBORHOOD
				9	MOUNTAIN VIEW	8,375	NEIGHBORHOOD
				9	CORRIDOR	7,607	NEIGHBORHOOD
				9	TERALTA EAST	6,259	NEIGHBORHOOD
				9	EL CERRITO	5,984	NEIGHBORHOOD
				9	KENSINGTON	5,963	NEIGHBORHOOD
				9	FAIRMOUNT VILLAGE	5,361	NEIGHBORHOOD
				9	MT HOPE	5,184	NEIGHBORHOOD
				9	ADAMS NORTH	5,115	NEIGHBORHOOD
				9	TERALTA WEST	4,957	NEIGHBORHOOD
				9	CHEROKEE POINT	4,672	NEIGHBORHOOD
				9	CHOLLAS CREEK	4,233	NEIGHBORHOOD
				9	SWAN CANYON	4,143	NEIGHBORHOOD
				9	AZALEA/HOLLYWOOD PARK	3,682	NEIGHBORHOOD
				9	FAIRMOUNT PARK	2,855	NEIGHBORHOOD
				9	FOX CANYON	2,165	NEIGHBORHOOD
				9	ISLENAIR	1,074	NEIGHBORHOOD
				9		17	NEIGHBORHOOD
				9	LOGAN HEIGHTS	-	NEIGHBORHOOD
				9	NORTH PARK	-	NEIGHBORHOOD
				9	STOCKTON	-	NEIGHBORHOOD

Community Planning Association Splits

COMMUNITY	DIS T	Populatio n	COMMUNITY	DIS T	Populatio n
BALBOA PARK	3	617	NAVAJO	7	53,486
BARRIO LOGAN	8	4,222	NCFUA SUBAREA II	5	766
BLACK MOUNTAIN RANCH	5	15,795	NORTH PARK	3	46,715
CARMEL MOUNTAIN RANCH	7	11,207	NOT IDENTIFIED	1	2,264
CARMEL VALLEY	5	26,005	NOT IDENTIFIED	8	-
CARMEL VALLEY	6	9,884	OCEAN BEACH	1	12,922
CLAIREMONT MESA	2	79,768	OLD TOWN SAN DIEGO	3	1,234
COLLEGE AREA	9	24,969	OTAY MESA	8	19,494
DEL MAR MESA	6	1,050	OTAY MESA	2	-
DEL MAR MESA	5	359	OTAY MESA-NESTOR	8	61,284
DOWNTOWN	3	44,083	PACIFIC BEACH	1	40,658
DOWNTOWN	8	86	PACIFIC HIGHLANDS RANCH	5	14,379
DOWNTOWN	1	-	PENINSULA	1	41,276
EAST ELLIOTT	7	98	RANCHO BERNARDO	5	42,902
ENCANTO NEIGHBORHOODS	4	48,624	RANCHO ENCANTADA	7	3,404
FAIRBANKS RANCH COUNTRY CLUB	5	468	RANCHO PENASQUITOS	5	43,018
GREATER GOLDEN HILL	3	14,307	RESERVE	1	109
KEARNY MESA	2	10,798	RESERVE	5	43
KEARNY MESA	6	1,371	RESERVE	7	-
LA JOLLA	1	29,783	SABRE SPRINGS	7	10,786
LINDA VISTA	2	35,647	SAN PASQUAL	5	212
LOS PENASQUITOS CANYON	6	606	SAN YSIDRO	8	28,444
LOS PENASQUITOS CANYON	5	-	SCRIPPS MIRAMAR RANCH	7	21,002
MID-CITY:CITY HEIGHTS	9	66,699	SERRA MESA	2	18,376
MID-CITY:CITY HEIGHTS	4	2,284	SKYLINE-PARADISE HILLS	4	67,611
MID-CITY:EASTERN AREA	4	26,878	SOUTHEASTERN SAN DIEGO	8	33,770
MID-CITY:EASTERN AREA	9	13,752	SOUTHEASTERN SAN DIEGO	9	13,559

MID-CITY:KENSINGTON-TALMADGE	9	14,484		SOUTHEASTERN SAN DIEGO	4	6,951
MID-CITY:NORMAL HEIGHTS	9	15,361		TIERRASANTA	7	30,629
MID-CITY:NORMAL HEIGHTS	3	-		TIJUANA RIVER VALLEY	8	1,077
MIDWAY-PACIFIC HIGHWAY	1	6,807		TORREY HIGHLANDS	5	8,678
MIDWAY-PACIFIC HIGHWAY	3	762		TORREY HILLS	6	6,916
MILITARY FACILITIES	6	8,008		TORREY HILLS	5	-
MILITARY FACILITIES	8	7,020		TORREY PINES	5	6,745
MILITARY FACILITIES	7	149		TORREY PINES	6	74
MIRA MESA	6	77,935		UNIVERSITY	6	54,997
MIRAMAR RANCH NORTH	7	11,880		UNIVERSITY	1	14,289
MISSION BAY PARK	1	1,688		UPTOWN	3	39,026
MISSION BEACH	1	3,292		VIA DE LA VALLE	5	459
MISSION VALLEY	7	11,206			9	17
MISSION VALLEY	3	9,031			1	-
MISSION VALLEY	2	5,344			2	-

Neighborhood Splits

NEIGHBORHOOD	DIST	Population	NEIGHBORHOOD	DIST	Population
ADAMS NORTH	9	5,115	MORENA	2	10,897
ALLIED GARDENS	7	12,020	MOUNTAIN VIEW	9	8,375
ALTA VISTA	4	2,519	MOUNTAIN VIEW	4	6,951
AZALEA/HOLLYWOOD PARK	9	3,682	MT HOPE	9	5,184
AZALEA/HOLLYWOOD PARK	3	-	MT HOPE	4	-
BALBOA PARK	3	617	NESTOR	8	16,636
BARRIO LOGAN	8	11,328	NORMAL HEIGHTS	9	10,246
BAY HO	2	12,244	NORMAL HEIGHTS	3	-
BAY HO	1	-	NORTH CITY	5	8,471
BAY PARK	2	16,957	NORTH CLAIREMONT	2	14,915
BAY TERRACES	4	31,386	NORTH CLAIREMONT	6	-
BIRDLAND	2	4,737	NORTH CLAIREMONT	1	-
BLACK MOUNTAIN RANCH	5	17,392	NORTH PARK	3	38,693
BORDER	8	154	NORTH PARK	9	-
BROADWAY HEIGHTS	4	596	O'FARRELL	4	6,848
BURLINGAME	3	705	OAK PARK	4	14,742
CARMEL MOUNTAIN	7	11,207	OCEAN BEACH	1	12,289
CARMEL VALLEY	5	33,658	OCEAN CREST	8	16,580
CARMEL VALLEY	6	18,456	OCEAN CREST	2	-
CASTLE	9	9,370	OLD TOWN	3	1,127
CASTLE	3	-	OTAY MESA	8	2,914
CHEROKEE POINT	9	4,672	OTAY MESA WEST	8	30,112
CHEROKEE POINT	3	-	PACIFIC BEACH	1	40,617
CHOLLAS CREEK	9	4,233	PALM CITY	8	5,316
CHOLLAS VIEW	4	4,523	PARADISE HILLS	4	17,263
CLAIREMONT MESA EAST	2	25,866	PARK WEST	3	8,751
CLAIREMONT MESA EAST	6	-	PETCO PARK	3	885
CLAIREMONT MESA WEST	2	10,273	POINT LOMA HEIGHTS	1	20,238

COLINA DEL SOL	9	10,321	QUALCOMM	7	1,108
COLLEGE EAST	9	9,945	RANCHO BERNARDO	5	42,925
COLLEGE WEST	9	11,830	RANCHO ENCANTADA	7	3,404
CORE-COLUMBIA	3	9,035	RANCHO PENASQUITOS	5	44,430
CORRIDOR	9	7,607	RANCHO PENASQUITOS	6	-
CORTEZ	3	3,943	RANCHO PENASQUITOS	7	-
DEL CERRO	7	7,576	REDWOOD VILLAGE	4	4,868
DEL MAR HEIGHTS	5	6,736	RIDGEVIEW/WEBSTER	4	5,711
EAST VILLAGE	3	16,088	ROLANDO	9	10,040
EGGER HIGHLANDS	8	9,564	ROLANDO PARK	4	3,841
EL CERRITO	9	5,984	ROSEVILLE / FLEET RIDGE	1	5,884
EMERALD HILLS	4	4,395	SABRE SPRINGS	7	10,786
ENCANTO	4	9,520	SAN CARLOS	7	13,494
FAIRMOUNT PARK	9	2,855	SAN PASQUAL	5	189
FAIRMOUNT VILLAGE	9	5,361	SAN YSIDRO	8	28,290
FOX CANYON	9	2,165	SCRIPPS RANCH	7	20,293
GASLAMP	3	863	SCRIPPS RANCH	6	-
GOLDEN HILL	3	9,081	SERRA MESA	2	25,640
GRANT HILL	8	3,939	SERRA MESA	6	-
GRANT HILL	3	-	SERRA MESA	7	-
GRANTVILLE	7	10,682	SHELLTOWN	8	3,913
HARBORVIEW	3	1,348	SHERMAN HEIGHTS	8	2,787
HILLCREST	3	14,961	SHERMAN HEIGHTS	3	-
HORTON PLAZA	3	641	SKYLINE	4	8,764
ISLENAIR	9	1,074	SORRENTO VALLEY	6	3,870
JAMACHA LOMITA	4	10,198	SORRENTO VALLEY	1	-
KEARNY MESA	2	4,117	SOUTH PARK	3	5,391
KEARNY MESA	6	1,371	SOUTHCREST	8	6,084
KEARNY MESA	7	-	STOCKTON	8	3,322
KENSINGTON	9	5,963	STOCKTON	3	-
LA JOLLA	1	29,964	STOCKTON	9	-

LA JOLLA	6	5,962	SUNSET CLIFFS	1	3,531
LA PLAYA	1	2,367	SWAN CANYON	9	4,143
LAKE MURRAY	7	17,388	TALMADGE	9	9,443
LINCOLN PARK	4	9,484	TERALTA EAST	9	6,259
LINDA VISTA	2	24,263	TERALTA WEST	9	4,957
LITTLE ITALY	3	4,108	TIERRASANTA	7	27,929
LOGAN HEIGHTS	8	13,725	TIJUANA RIVER VALLEY	8	733
LOGAN HEIGHTS	9	-	TORREY HIGHLANDS	5	6,028
LOMA PORTAL	1	5,996	TORREY PINES	6	10,976
MARINA	3	7,190	TORREY PINES	1	108
MARINA	1	-	TORREY PRESERVE	6	12
MARINA	8	-	TORREY PRESERVE	5	-
MIDTOWN	3	4,568	UNIVERSITY CITY	6	38,005
MIDWAY DISTRICT	1	7,799	UNIVERSITY CITY	1	14,289
MIDWAY DISTRICT	3	-	UNIVERSITY HEIGHTS	3	12,276
MIRA MESA	6	73,843	VALENCIA PARK	4	10,739
MIRA MESA	5	-	WOODED AREA	1	3,703
MIRAMAR	6	8,346		1	2,261
MIRAMAR RANCH NORTH	7	12,738		9	17
MISSION BAY	1	582		2	-
MISSION BEACH	1	3,460		3	-
MISSION HILLS	3	6,548		5	-
MISSION HILLS	1	-		6	-
MISSION VALLEY EAST	3	6,351		8	-
MISSION VALLEY EAST	7	5,222			
MISSION VALLEY EAST	2	24			
MISSION VALLEY WEST	3	2,605			