

Draft Mobility Technical Report

Mira Mesa Community Plan Update

Planning Department

June 20, 2022



Alex Frost
Project Manager
City of San Diego
Planning Department



Claudia Brizuela
Senior Traffic Engineer
City of San Diego
Sustainability and
Mobility Department

Agenda

- Call to Order
- Non-Agenda Public Comment
- Introduction
- Draft Mobility Technical Report
- Key Highlights
- Discussion





Introduction



Fall 2018

CPU LAUNCH &
EXISTING
CONDITION

2019 - 2021

CONCEPT &
ALTERNATIVE

Spring 2022

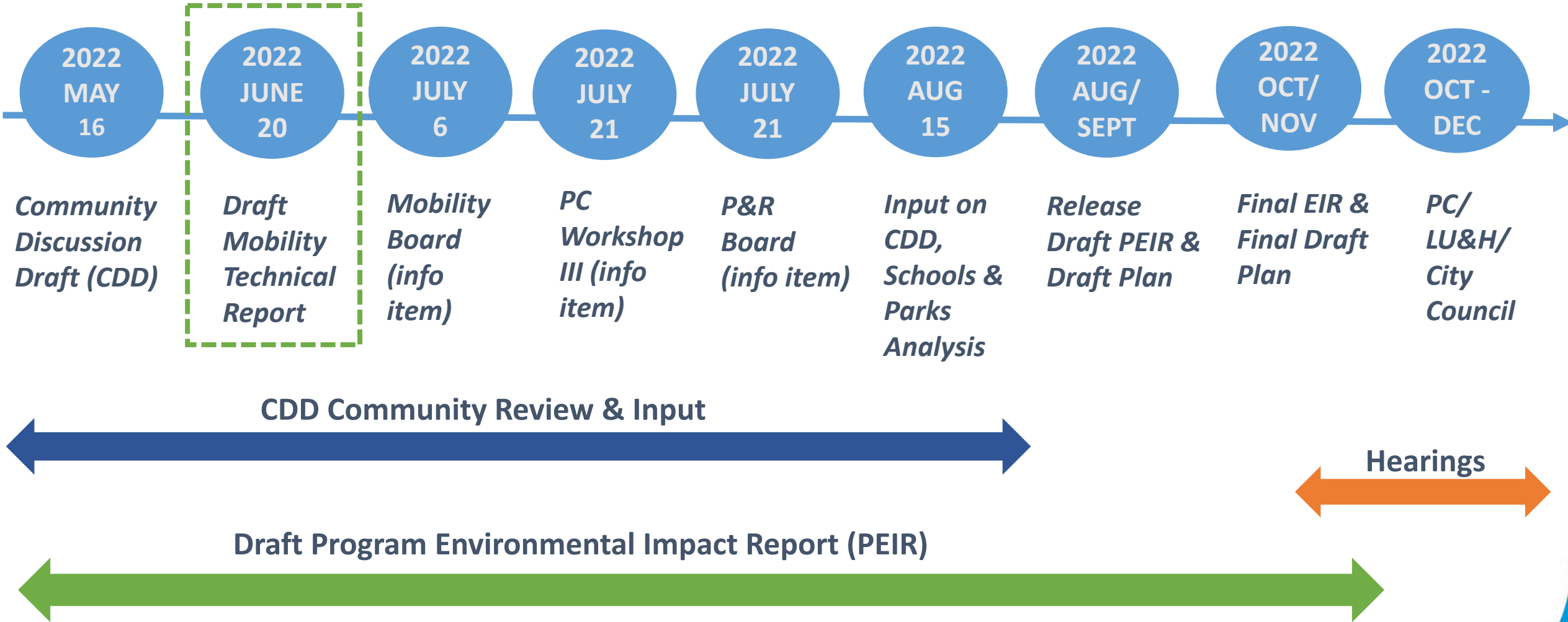
COMMUNITY
DISCUSSION
DRAFT

Summer/Fall 2022

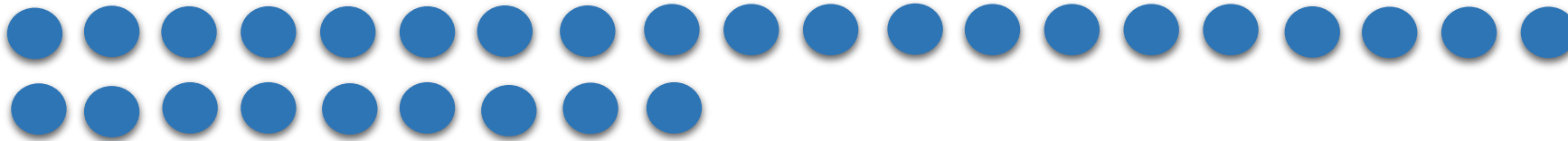
DRAFT PLAN
&
DRAFT
ENVIRONMENTAL
IMPACT
REPORT

Fall/Winter 2022

HEARINGS:
FOR
CONSIDERATION
BY CITY COUNCIL



Mira Mesa CPU Advisory Committee Meetings



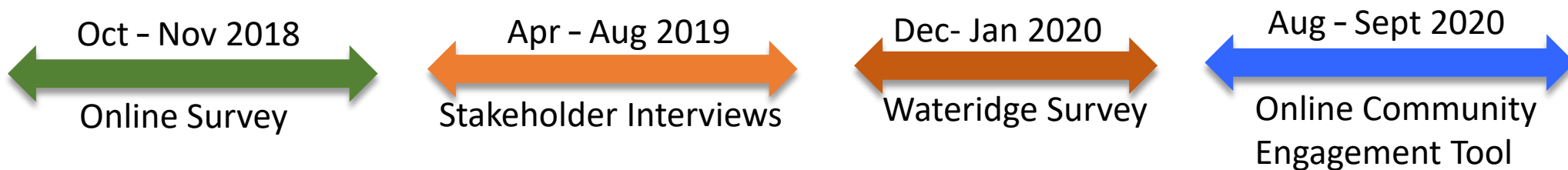
29
Meetings

Open House, Pop-Up Booth, and Workshops



6
Events

Online Engagement & Stakeholder Interviews



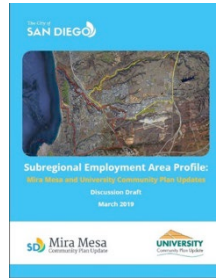
4
Opportunities



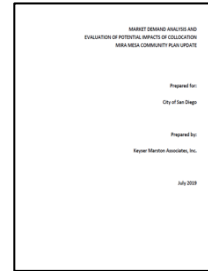
Mira Mesa
Community
Atlas



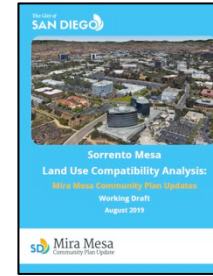
Community
Engagement
Report



Subregional
Employment
Area Profile



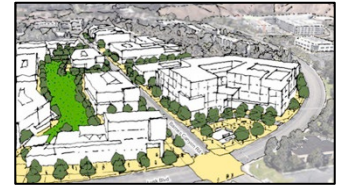
Market
Demand &
Collocation
Study



Land Use
Compatibility
Analysis
(Sorrento & Miramar)



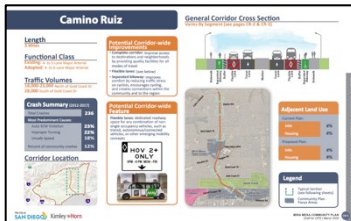
Peer-Cities &
Citywide
Analysis



Urban Design
Site Analyses
& Renderings



Mobility Existing
Conditions



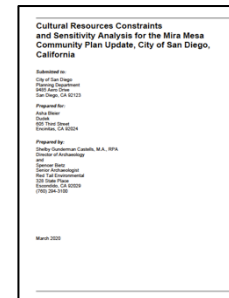
Mobility Corridor
Concepts



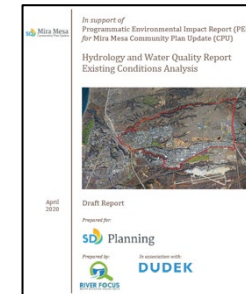
Draft Mobility
Technical Report



Geotec, &
Hazmat



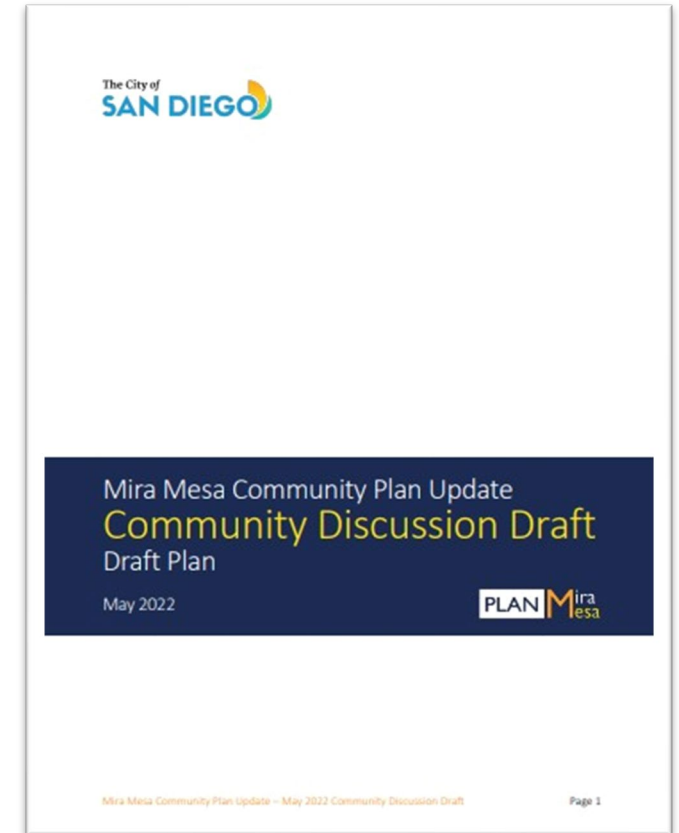
Biological
& Cultural
Resources



Water &
Wastewater

Community Discussion Draft & Figures

- The CDD contains the **community vision, goals, & policies**, along with limited maps and graphics in the Draft Plan Figures.
- The **purpose** of the CDD is to provide the MM CPU AC & community stakeholders with a **comprehensive understanding** of the policies in the new community plan & provide an **opportunity for community input** on the refinement of plan policies.
- Over **100 comments** received so far



Available @ www.PlanMiraMesa.org

**SANDAG Regional Growth Forecast
(2050 for Mira Mesa CPA)****Series 13 Series 14
SCS**

| | | |
|--|---------|---------|
| Person Per Household | 3.05 | 2.55 |
| Vacancy Rate - Single Family Home | 2.6% | 2.3% |
| Vacancy Rate – Multi-Family Home | 2.6% | 10.1% |
| Proposed MM Community Plan Population Projection | 174,000 | 130,000 |

- Due to the recent availability of SANDAG's most current regional growth forecast - Series 14 SCS - used in the 2021 Regional Plan for the city's Community Plan Area, the population projection in the Community Discussion Draft is being updated from 174k to 130k⁽¹⁾.

(1) Rounded to the nearest 1,000. This information may be further refined during the preparation of draft PEIR

Documentation about S14 SCS: <https://sdforwarddata-sandag.hub.arcgis.com/documents/series-14-regional-growth-forecast-and-scs-land-use-pattern-subregional-allocation/explore>

An aerial photograph of a city landscape, featuring a mix of residential and commercial buildings, green hills, and distant mountains under a clear sky. A semi-transparent blue rectangular overlay is positioned in the center of the image, containing the title text in white.

Draft Mobility Technical Report

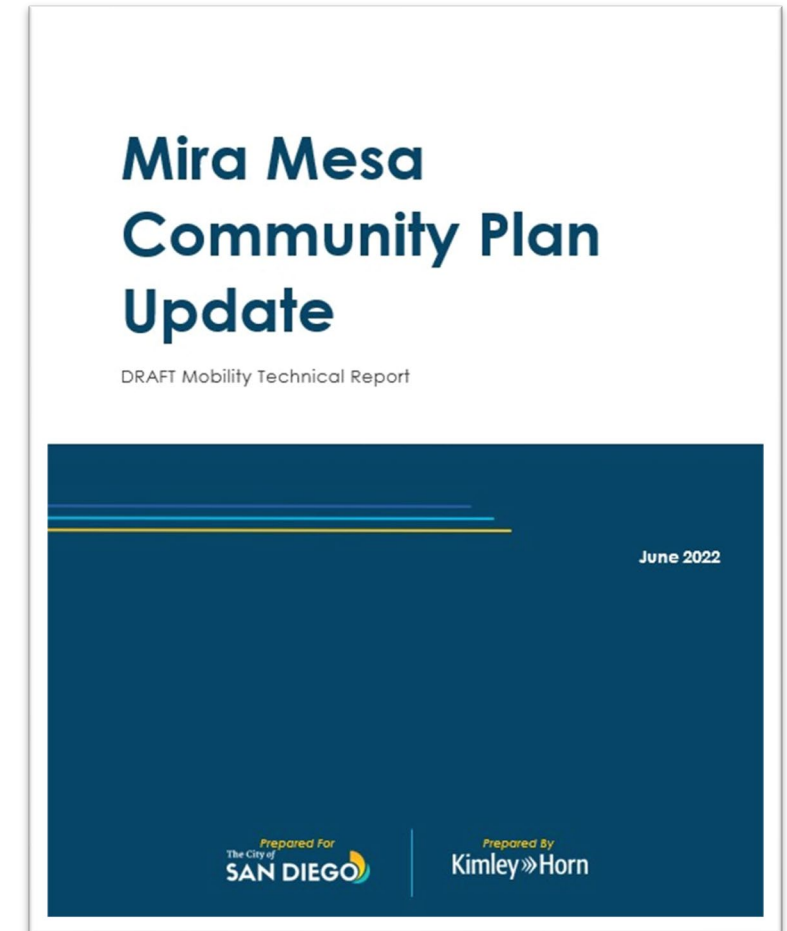
Overview

- The **Draft Mobility Technical Report** summarizes the physical and operational conditions of the planned mobility system outlined in the Mira Mesa Mobility Element
- This report is one component of the Mira Mesa Community Plan Update, identifying the **planned mobility improvements** and culminating with an **analysis of all travel modes** under the horizon year of 2050 Proposed Plan conditions.



MTR Outline

1. Introduction
2. Analysis Methodology
3. Mira Mesa Proposed Plan
4. Modeling & Forecasting
5. Proposed Plan Analysis



Vision: Modal Strategies



Enhance walkable connections for residents, employees, and retail visitors



Create a network of separated bikeways for regional access & parallel low-stress routes for local trips within Mira Mesa



Make transit a competitive and reliable option



Maximize roadway efficiency



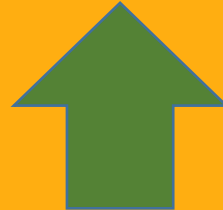
Transit



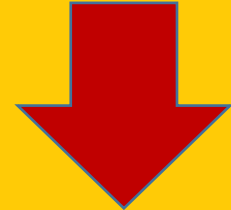
Bicycling



Walking



**Commute
Distance**



Highlights

1. Pedestrian Facility Improvements
2. Pedestrian Bridges
 - Two recommended locations
 - Mira Mesa High School
3. Carroll Canyon Road Alignment Study

Highlights

Pedestrian Facility Improvements



Continental Crosswalks improve crosswalk visibility and are known to improve driver yielding compliance.



Pedestrian Countdown Signals provide pedestrians with a clear indication of how many seconds remain to safely cross.



Bulb-outs/Curb Extensions shorten pedestrian crossing distances and serve as a traffic calming mechanism.



Lead Pedestrian Intervals provide pedestrians a 3-7 second head start when entering an intersection, reinforcing their right-of-way over turning vehicles.



Advance Stop Bars/Limit Lines direct drivers where to stop at intersections and mid-block crossing locations, providing separation between the vehicle and crossing pedestrians.



Pedestrian Hybrid Beacons are traffic control signals that help pedestrians and bicyclists cross mid-block across high traffic roadways.



Pedestrian Scale Lighting increases visibility along walkways, creating a more comfortable and inviting environment for pedestrians.



Wayfinding is used to help orient pedestrians and direct them to destinations. Maps and directional signage are two wayfinding examples.

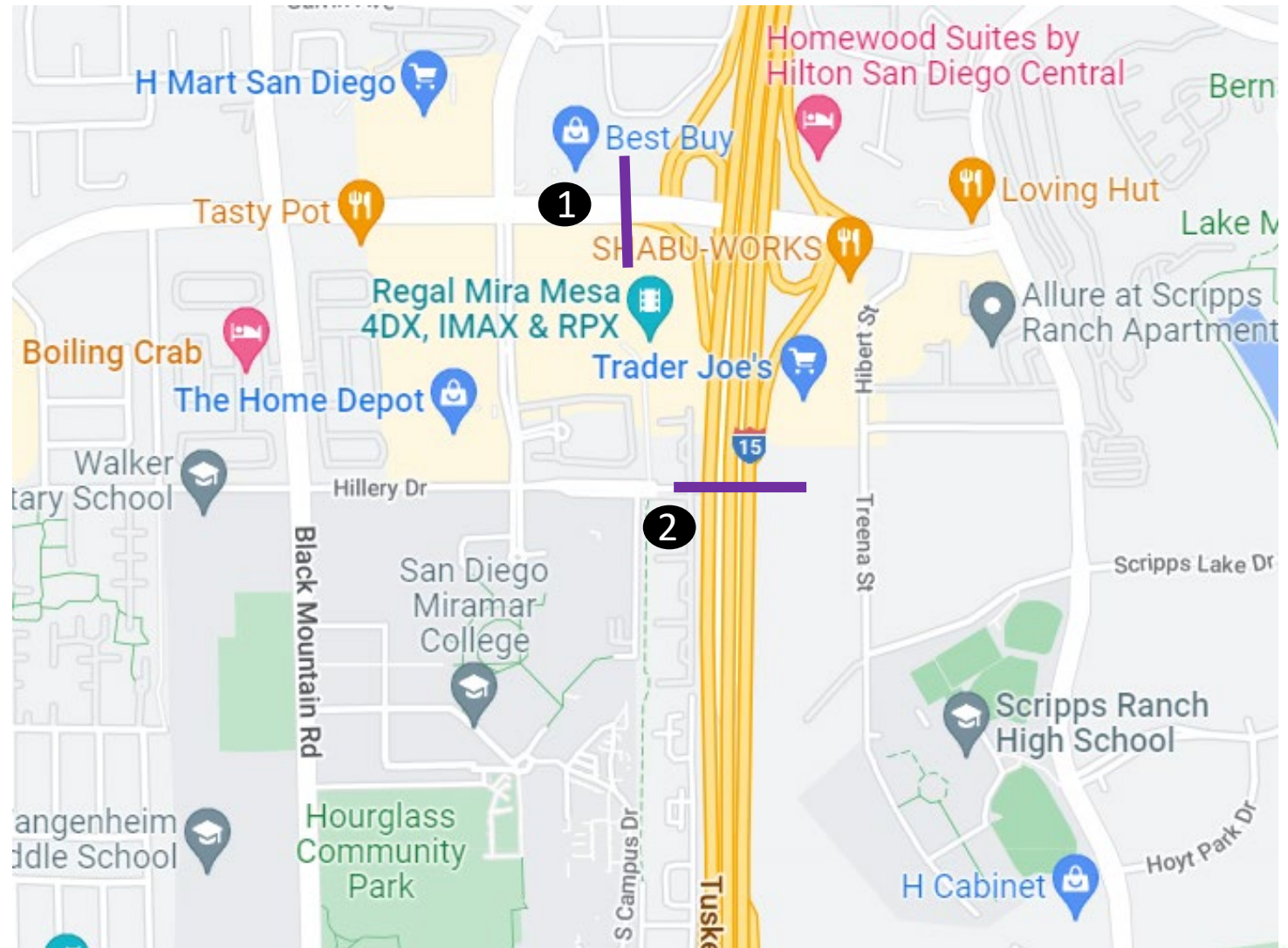


Landscaped Buffers along roadways provide separation between pedestrians and vehicles, creating a more comfortable environment.

Highlights

Pedestrian bridges

- Two locations proposed in the plan



Highlights

Mira Mesa High School

- Students crossing midblock near high school
- Pedestrian Bridge
 - Most effective with a natural “desire line”
 - Ease of use by user
 - Convenient direct path
- Accessibility for those with disabilities
 - Long winding ramps
 - Stairs
 - Elevators
- Considerations: Cost, displaced distance, lighting needs, safety and maintenance





OnPoint CP
Amendment

Planned Carroll Canyon Road
Alignment Study initiated by the City of San Diego

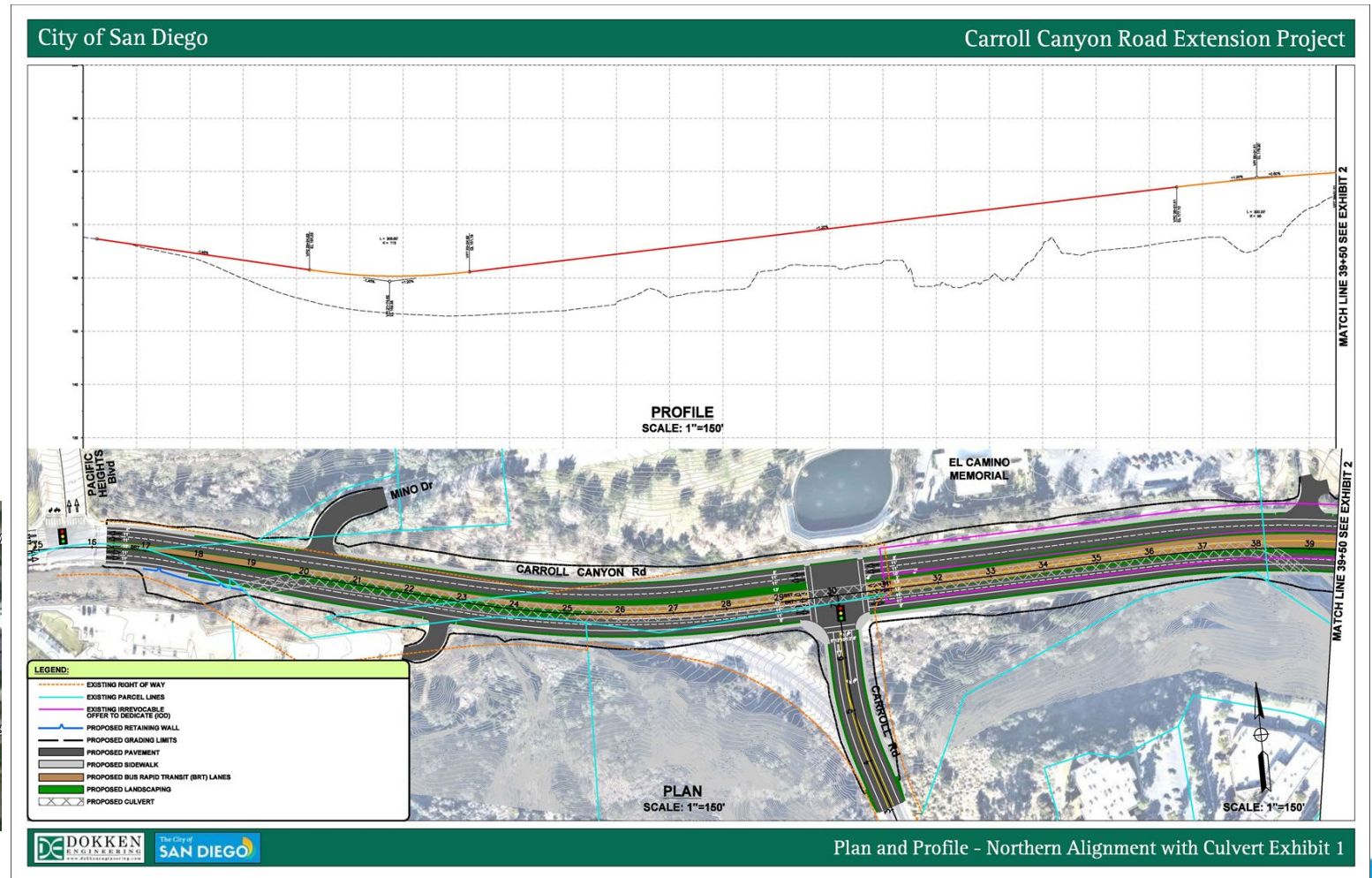
Carroll Canyon:

- 3 Roots
- Stone Creek
- El Camino Memorial Expansion
- Carroll Canyon Golf
- Carroll Canyon Alignment Study

- Carroll Canyon Road Alignment Study (Stone Creek)
- Carroll Canyon Road Alignment Study (T-SA)
- Carroll Canyon Road Alignment Study
- El Camino Memorial
- Stone Creek Master Plan
- 3-Roots Master Plan
- Carroll Canyon Golf - Community Plan Amendment

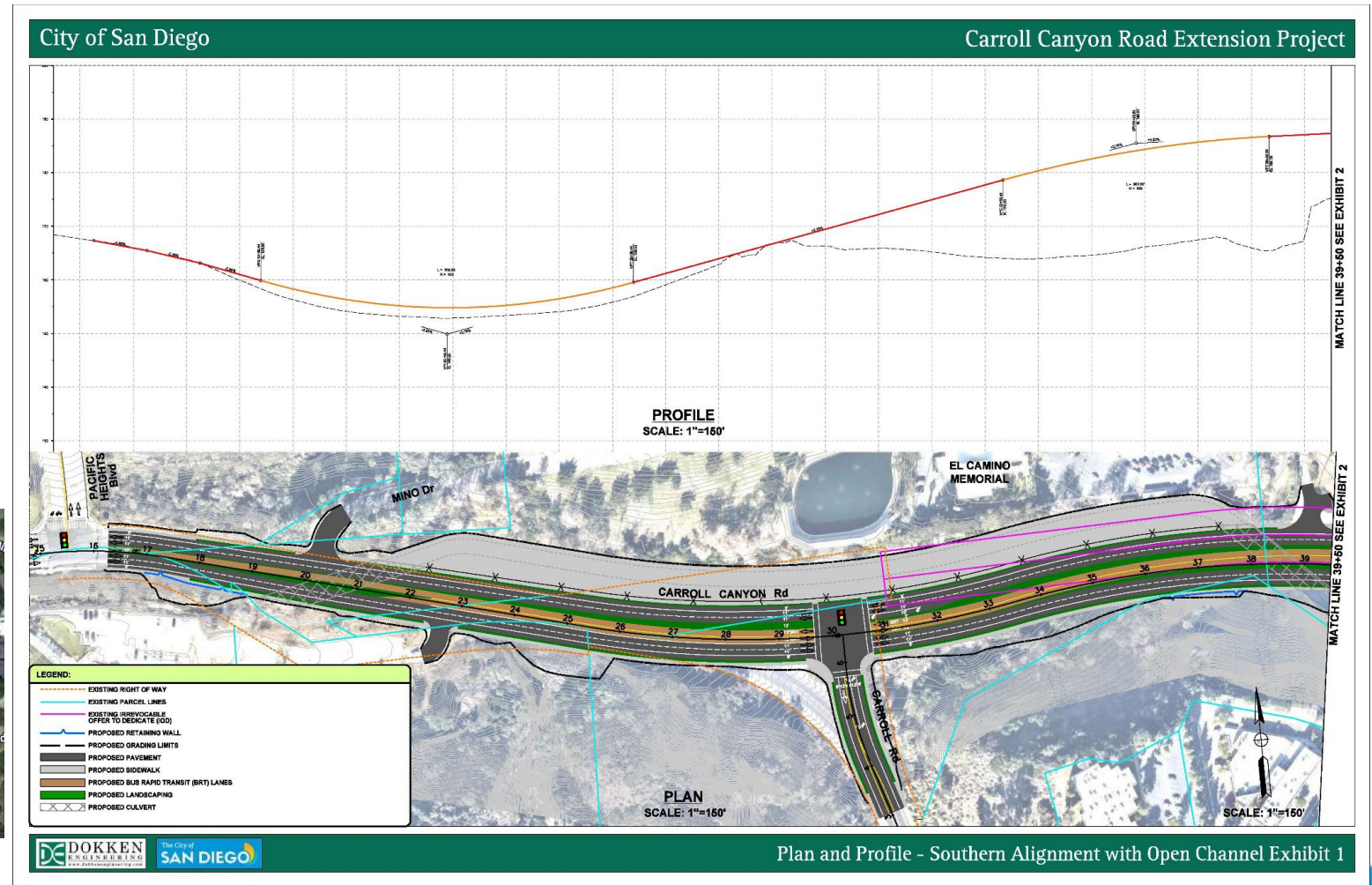
Carroll Canyon Rd Alignment Study

- Two alternatives
- Cost Estimate
- Environmental Analysis

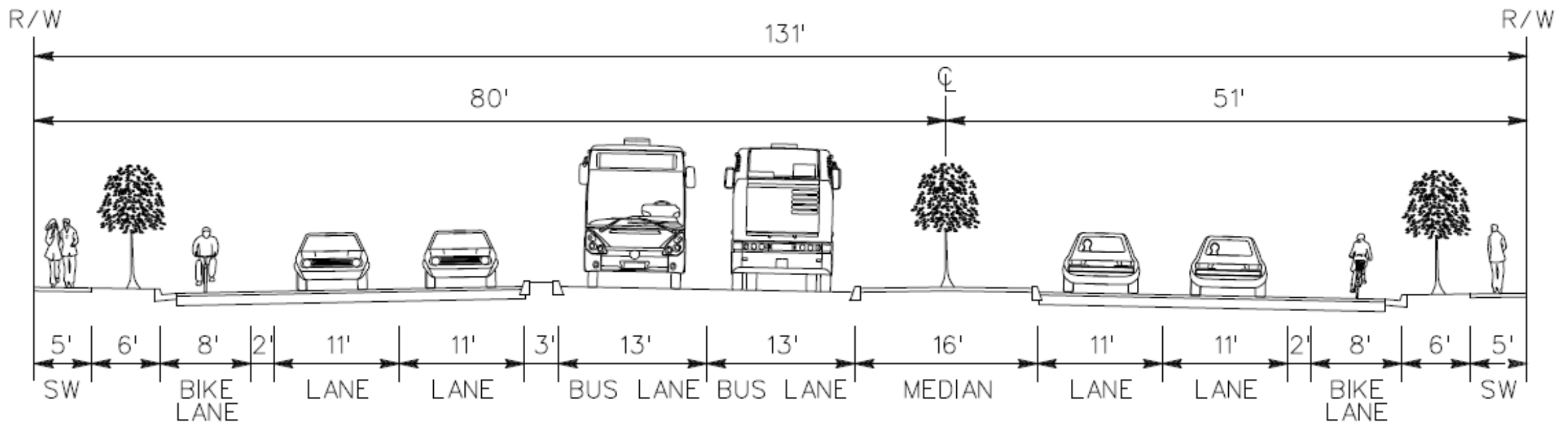


Carroll Canyon Rd Alignment Study

- Two alternatives
- Cost Estimate
- Environmental Analysis



Carroll Canyon Rd Alignment Study



Carroll Canyon Road Cross Section

DRAFT Cross Section

Next Steps

- Receive Community Input (Spring/Summer 2022)
- Mobility Board (July 6, 2022)
- PC Workshop III – Info Item (July 21, 2022)
- Park & Recreation Board (July 21, 2022)
- Final Draft Mobility Tech Report (August 2022)
- Release Draft Plan & Draft PEIR (Summer/Fall 2022)
- Hearings (Fall/Winter 2022)



Questions, Comments, Input...



Draft Mobility Technical Report

Mira Mesa Community Plan Update

Planning Department

June 20, 2022