

Morena Pump Station

About Pure Water San Diego

The City of San Diego (City) is dependent on a reliable imported water supply to deliver clean and safe drinking water to its growing communities. To address the City’s water demand challenges caused by a limited local supply, increased demand on imported water, and climate change, the City is investing in advanced water purification to secure a safe, local, and drought-resistant water supply for the future.

Project Overview

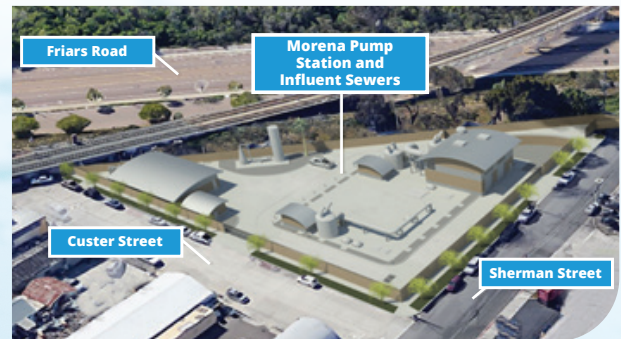
The Morena Pump Station project includes construction of a wastewater pump station at the southwest corner of Custer Street and Sherman Street off Morena Boulevard, just north of Interstate 8. The pump station will divert an average of 32 million gallons per day (mgd) of wastewater from the Point Loma Wastewater Treatment Plant to the North City facilities on Eastgate Mall in University City, via a pipeline that will be constructed as part of the Morena Pipelines projects.

Construction activities will include demolition and site preparation, utility relocation, underground utility installation, concrete work, electrical work, mechanical instrumentation, and site work like landscaping, lighting, and fencing.

Offsite utility relocation work and utility construction work will be ongoing in the streets around the new pump station.

The Morena Pump Station project also includes the construction of overflow sewers, diversion structures, and a junction structure on the section of Friars Road adjacent to the pump station site.

SD Morena Pump Station



| Rendering of the Morena Pump Station

PROJECT CONSTRUCTION SCHEDULE



- Project Started: June 2021
- Anticipated Project Completion: 2026

For more project information, please visit phase1.purewatersd.org or call 833-MOR-PWSD (833-667-7973) and a project team member will return your call within one business day. Please submit your email address via purewatersd.org or email purewatersd@sandiego.gov to be added to the distribution list for electronic notifications.



What to Expect During Construction

During construction, the project team is committed to minimizing inconveniences and impacts, and ensuring a safe environment for residents, businesses, commuters, recreational users, schools, religious centers, and emergency services. Traffic control will facilitate the flow of traffic through the construction area. While the majority of construction will take place on City-owned property, there will be some utility work in the streets surrounding the Morena Pump Station. **Please follow all posted signage and directions from construction crews.**

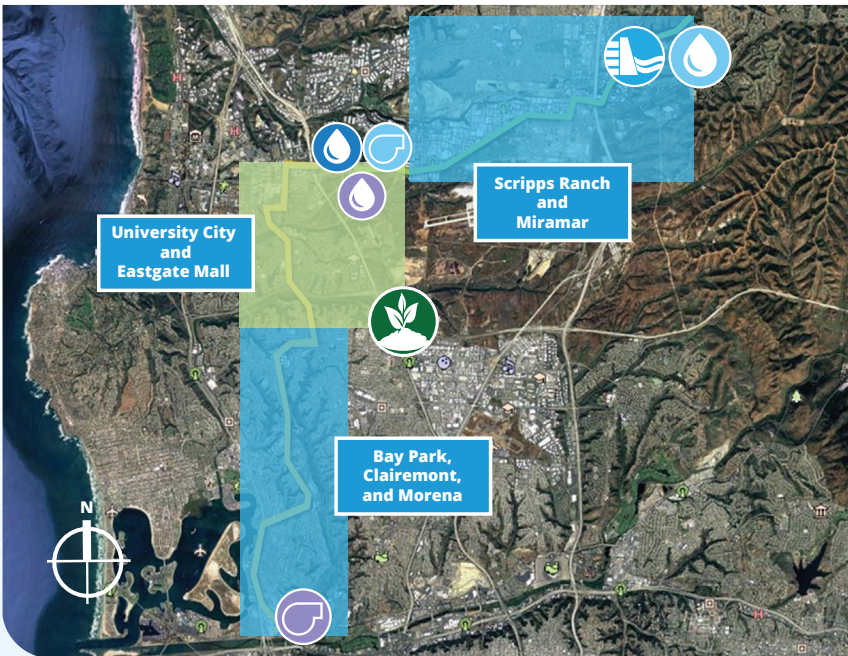
How to Stay Informed

The City of San Diego is committed to providing San Diegans with up-to-date project information. Construction notices will be distributed to properties in the vicinity of the pump station work before and throughout construction. Additional notices will be available on purewatersd.org and via Pure Water San Diego on Facebook and [@purewatersd](https://twitter.com/purewatersd) on Twitter. To sign up for email notifications for this project, visit purewatersd.org and click on “Phase 1 Projects.” Click “Sign Up For Email Updates” and select the “Morena Pump Station” email list.

The City is coordinating closely with other agencies, including Metropolitan Transit System, Caltrans, San Diego Unified School District; United States Postal Service and mail/delivery companies; solid waste haulers and emergency responders, to ensure they also have up-to-date construction information.

WHAT TO EXPECT

- Access maintained for businesses and emergency responders
- SDG&E utility relocations
- Heavy equipment and increased traffic, especially around morning and afternoon commute times
- Daytime work scheduled from Monday to Friday from 7 a.m. to 4 p.m.
- Weekend and evening work scheduled occasionally, as needed
- Westbound lanes closed on Friars Road between Napa Street and Sea World Drive until mid-2024
- A detour is in place for westbound traffic via Napa Street, Morena Boulevard, Tecolote Road and Sea World Drive
- Eastbound vehicle access is still open from Sea World Drive to Napa Street
- Both eastbound and westbound bicycle lanes are open and accessible



Phase 1 Construction Packages

Bay Park, Clairemont, and Morena

- Morena Pump Station
- Morena Conveyance South and Middle and Conveyance Bike Lanes

University City and Eastgate Mall

- Morena Pipelines Northern Alignment & Tunnels
- North City Pure Water Facility & Pump Station
- North City Water Reclamation Plant Expansion
- NCWRP Flow Equalization Basin
- Metro Biosolids Center Improvements

Scripps Ranch and Miramar

- North City Pure Water Pipeline, Dechlorination Facility, & Subaqueous Pipeline
- Miramar Reservoir Pump Station Improvements