



San Diego Community Power Franchise Compliance Review Committee Update

November 2, 2023



Who we are

Who is San Diego Community Power?





Mission & Vision

Mission Statement:

San Diego Community Power is a community-owned organization that provides affordable clean energy and invests in the community to create an equitable and sustainable future for the San Diego region.

Vision Statement:

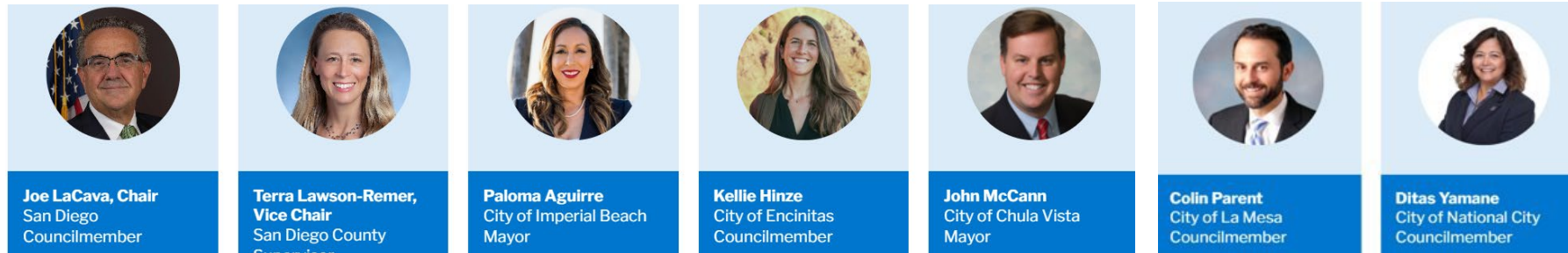
A global leader inspiring innovative solutions to climate change by powering our communities with 100% clean affordable energy while prioritizing equity, sustainability, and high-quality jobs.



SDCP Governance & Oversight

Board of Directors

The Board of Directors is made up of one elected official from each of the communities we serve. Board members represent everyone's interests, and ensure that once costs are covered, the remaining revenues are reinvested for the benefit of all participating communities and cultures.



Community Advisory Committee

We also rely on the guidance of our Community Advisory Committee (CAC), comprising of two representatives from each community.

San Diego

Eddie Price
Matthew Vasilakis

County of San Diego

Peter Andersen
(Vacant)

Imperial Beach

Anna Webb
(Vacant)

Encinitas

Gary L. Jahns
Tara Hammond

Chula Vista

Carolyn Scofield
Anthony Sclafani

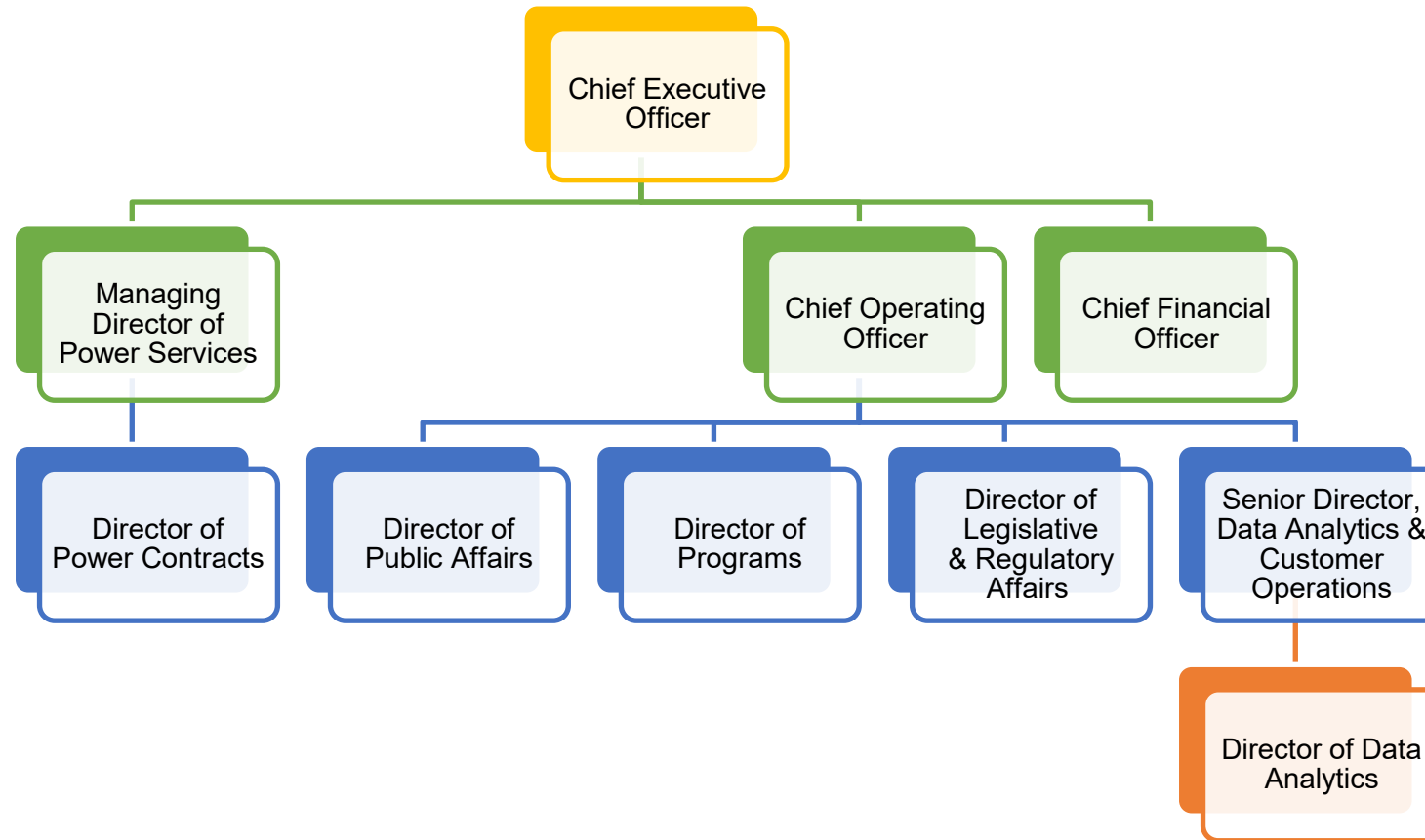
La Mesa

David Harris
Lauren Cazares

National City

Aida Castañeda
Larry Emerson

SDCP Leadership



Our SMART Goals

- **Financial Stability:** Practice fiscal strategies to promote long-term organizational sustainability
- **Energy Portfolio Development:** Provide sufficient, reasonably priced, clean electricity to our customers
- **Community Program Delivery:** Implement energy projects and programs that reduce greenhouse gas emissions, align energy supply and demand, and provide benefits to community stakeholder groups
- **Brand Building:** Develop trusted brand reputation to help drive participation in programs and support customer service and retention
- **Public Policy:** Advocate for public policies that advance SDCP organizational priorities
- **Customer Service:** Ensure high customer retention and satisfaction
- **Organizational Excellence:** Ensure excellence by adopting sustainable business practices and fostering a workplace culture of innovation, diversity, transparency and integrity

Energy Cooperation



SDCP

Buys electricity from renewable sources

SDG&E

Delivers power and maintains the grid

You

Cleaner power, local control and competitive rates

Rates & Billing

Enrollment Status – COMPLETED!



*NEM customers will continue be enrolled according to their true-up dates through March 2024

Current Rates

TOU Period Weekdays	Summer June 1 - October 31	Winter November 1 - May 31
On-Peak	4:00 p.m. - 9:00 p.m.	4:00 p.m. - 9:00 p.m.
Off-Peak	6:00 a.m. - 4:00 p.m.; 9:00 p.m. - midnight	6:00 a.m. - 4:00 p.m. Excluding 10:00 a.m. - 2:00 p.m. in March and April; 9:00 p.m. - midnight
Super-Off Peak	Midnight - 6:00 a.m.	Midnight - 6:00 a.m. 10:00 a.m. - 2:00 p.m. in March and April

TOU Period Weekends and Holidays	Summer June 1 - October 31	Winter November 1 - May 31
On-Peak	4:00 p.m. - 9:00 p.m.	4:00 p.m. - 9:00 p.m.
Off-Peak	2:00 p.m. - 4:00 p.m.; 9:00 p.m. - midnight	2:00 p.m. - 4:00 p.m.; 9:00 p.m. - midnight
Super-Off Peak	Midnight - 2:00 p.m.	Midnight - 2:00 p.m.

TOU-DR-1	Residential Time-Of-Use		
Season	Charge Type	Time of Use Period	PowerOn
Summer	Generation	On-Peak	\$0.53024
Summer	Generation	Off-Peak	\$0.22959
Summer	Generation	Super Off-Peak	\$0.07169
Winter	Generation	On-Peak	\$0.16831
Winter	Generation	Off-Peak	\$0.08724
Winter	Generation	Super Off-Peak	\$0.06372

DR-SES	Domestic Time-Of-Use For Households With A Solar Energy System		
Season	Charge Type	Time of Use Period	PowerOn
Summer	Generation	On-Peak	\$0.49211
Summer	Generation	Off-Peak	\$0.17080
Summer	Generation	Super Off-Peak	\$0.07169
Winter	Generation	On-Peak	\$0.19977
Winter	Generation	Off-Peak	\$0.13863
Winter	Generation	Super Off-Peak	\$0.06372

Joint Rate Comparison

Time of Use – TOUDR-Residential

Residential: TOUDR	SDG&E 44.5% Renewable	SDCP PowerOn 54.9% Renewable + 5% Carbon Free	SDCP Power100 100% Renewable
Generation Rate (\$/kWh)	\$0.15454	\$0.17602	\$0.18353
SDG&E Delivery Rate (\$/kWh)	\$0.25571	\$0.25571	\$0.25571
SDG&E PCIA (\$/kWh)	\$0.04439	\$0.01687	\$0.01687
Franchise Fees (\$/%)	\$0.00376	\$0.00376	\$0.00376
Total Electricity Cost (\$/kWh)	\$0.45840	\$0.45236	\$0.45987
Average Monthly Bill (\$)	\$182.90	\$180.49	\$183.49

Average Monthly Usage: 399 kWh

Rates current as of February 1, 2023

SDCP customers will save 1-2% on their total bills based on current rates

Standard – DR-Residential

Residential: DRLI	SDG&E 44.5% Renewable	SDCP PowerOn 54.9% Renewable + 5% Carbon Free	SDCP Power100 100% Renewable
Generation Rate (\$/kWh)	\$0.16002	\$0.18134	\$0.18883
SDG&E Delivery Rate (\$/kWh)	\$0.26099	\$0.26099	\$0.26099
SDG&E PCIA (\$/kWh)	\$0.04438	\$0.01687	\$0.01687
Franchise Fees (\$/%)	\$0.00512	\$0.00512	\$0.00512
Total Electricity Cost (\$/kWh)	\$0.47052	\$0.46432	\$0.47181
Average Monthly Bill (\$)	\$217.85	\$214.98	\$218.45

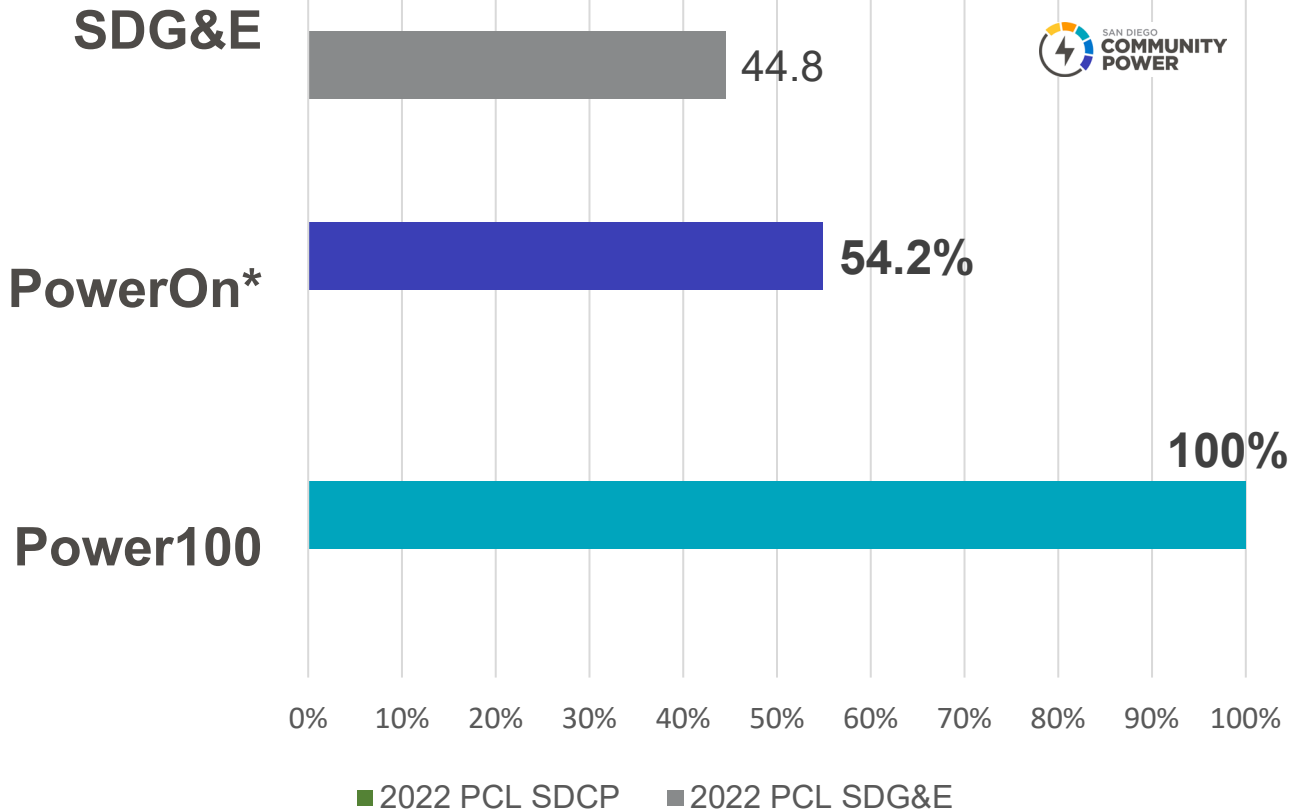
Average Monthly Usage: 463 kWh

Rates current as of February 1, 2023

Compare Renewable Energy

2022 Power Content Label

2022 POWER CONTENT LABEL					
San Diego Community Power					
https://sdcommunitypower.org/resources/key-documents/					
Greenhouse Gas Emissions Intensity (lbs CO ₂ e/MWh)			Energy Resources		
2022 SDCP PowerOn Power Mix	2022 SDCP Power100 Power Mix	2022 CA Utility Average	2022 SDCP PowerOn Power Mix	2022 SDCP Power100 Power Mix	2022 CA Power Mix
375	0	422	Eligible Renewable ¹	54.2%	100.0%
			Biomass & Biowaste	1.2%	0.0%
			Geothermal	2.6%	0.0%
			Eligible Hydroelectric	1.3%	0.0%
			Solar	25.5%	50.0%
			Wind	23.6%	50.0%
			Coal	0.0%	0.0%
			Large Hydroelectric	12.8%	0.0%
			Natural Gas	0.0%	0.0%
			Nuclear	0.0%	0.0%
			Other	0.0%	0.0%
Unspecified Power ²	33.1%	0.0%	TOTAL	100.0%	100.0%
Percentage of Retail Sales Covered by Retired Unbundled RECs ³ :			0%	0%	
¹ The eligible renewable percentage above does not reflect RPS compliance, which is determined using a different methodology. ² Unspecified power is electricity that has been purchased through open market transactions and is not traceable to a specific generation source. ³ Renewable energy credits (RECs) are tracking instruments issued for renewable generation. Unbundled renewable energy credits (RECs) represent renewable generation that was not delivered to serve retail sales. Unbundled RECs are not reflected in the power mix or GHG emissions intensities above.					
For specific information about this electricity portfolio, contact:			San Diego Community Power 1 (888) 382-0169		
For general information about the Power Content Label, visit:			https://www.energy.ca.gov/programs-and-topics/programs/power-source-disclosure-program		



*SDCP's PowerOn product is at least 50% Renewable in 2022 was 67% carbon free

What (didn't) Change?

What Didn't Change

- Billing (still one bill from SDG&E)
- Service reliability (SDG&E still responsible)
- Rate structures (rate schedules align with SDG&E offerings, including the Time-of-Use periods)
- Discounts (e.g., CARE/FERA)
- Your day-to-day

What Changed

- Competitive rates (3% generation discount)
- Higher renewable energy
- An effective customer service team
- Reinvesting back into the community
- Net Energy Metered Program that pays you more for your excess generation
- New programs addressing local needs

Understanding Your Bill

Online Bill Estimator

Account Information
[Where do I find my account information?](#)

Rate
Select Rate

Service Location
Select Location

Bill Ending Month
Select Month

CALCULATE


Understanding Your Bill



Summary of Current Charges

(See page 2 for details)

	Billing Period	Usage	Amount(\$)
Electric Delivery	Aug 19, 2021 - Sep 17, 2021	879 kWh	203.50
CCA Electric Generation			124.91
Total Charges this Month			\$328.41

 Your electric energy is provided by San Diego Community Power. If you have any questions about the Community Choice Aggregation (CCA) charges on your bill, please contact your CCA at 1-888-382-0169.

Community Power Plan



Community Power Plan

A five-year strategic plan for customer energy program offerings

May 2023

CPP Program Types

Short-term Program Types (FY 23/24 – FY 24/25)

Energy Awareness and Education

Application Assistance

Disadvantaged Communities Green Tariff and Community Solar Green Tariff

Pilot Programs

Grant Programs

Mid-term Program Types (FY 25/26 – FY 26/27)

Building Electrification: Appliances

Building Electrification: Heat Pump Technologies

Distributed Energy Resources: Energy Storage Systems

Distributed Energy Resources: Demand Response & Load Modification

Energy Efficiency

Transportation Electrification: Infrastructure

Transportation Electrification: Light-Duty Vehicles

Transportation Electrification: Medium- and Heavy-Duty Vehicles



Pilot Programs

1) Building Electrification

- Example: Emergency Water Heater Loaner Pilot
 - Most water heaters are only replaced when they fail
 - Provide a loaner gas water heater while electrical upgrades/permit work is completed to support a heat pump water heater

2) Distributed Energy Resources

- Example: DAC-SASH Enabling Roof Repair Pilot
 - Provide roof repairs for homes eligible to participate in DAC-SASH but with a roof in bad condition

3) Energy Efficiency

- Example: ENERGY STAR Refrigerator/Freezer Swap Out Pilot
 - Apply for CDFA grant on behalf of small commercial customers and facilitate the upgrade to energy efficient refrigerators/freezers in corner stores

4) Load & Demand Management

- VPP Pilot w/ Recurve & Calpine



Grant Programs

- Provide funding to community-based organizations and SDCP member agencies to implement clean energy projects or innovative program ideas
- Support creative ideas that may not be possible through traditional funding sources
- Create tangible trust and relationship-building opportunities
- Increase visibility of SDCP within the communities it serves



Building Community

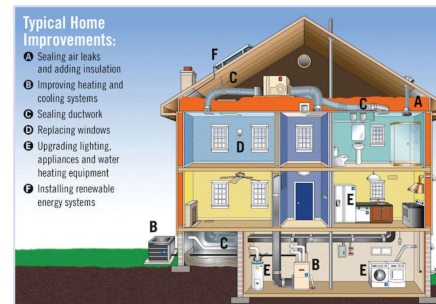
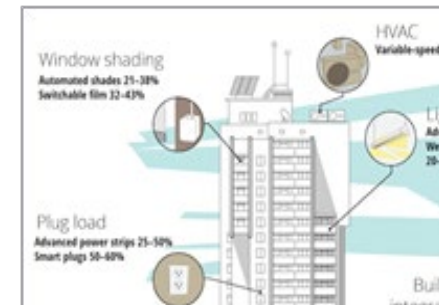
Regional Energy Network (REN)

In 2012, the CPUC issued a decision inviting local governments to collaborate and submit proposals for a **new model for administering energy efficiency programs**. REN criteria includes:

- Activities that utilities cannot or do not intend to undertake
- Pilot activities where there is no current utility offering and where there is potential for scalability to a broader geographic reach, if successful
- Activities serving hard-to-reach markets, whether or not there is another utility program that may overlap

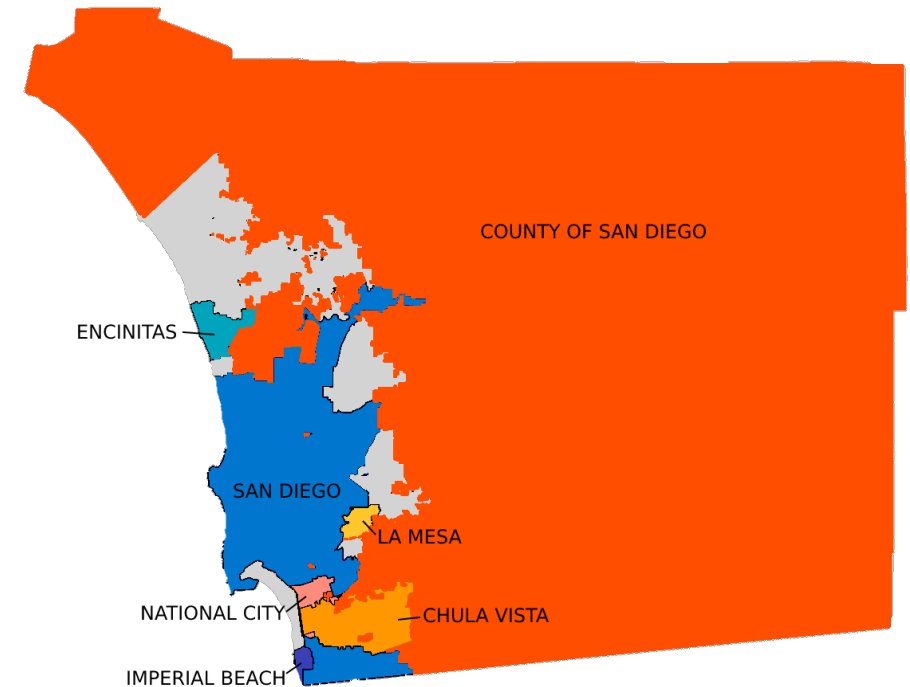
Value of REN

- Provides unique value to Commission's energy, climate and/or equity goals
- Prioritizes underserved customers
- No cost effectiveness requirements
- San Diego one of the last highly populated regions without a REN



Community Engagement

- Connecting with community leaders and member agency staff
- Key focus on attending and hosting events in Communities of Concern, with equitable and inclusive engagement
- Partnerships with local community-based organizations and stakeholders who work directly with community members
- Understanding the needs and concerns of each community and building programs to address injustices

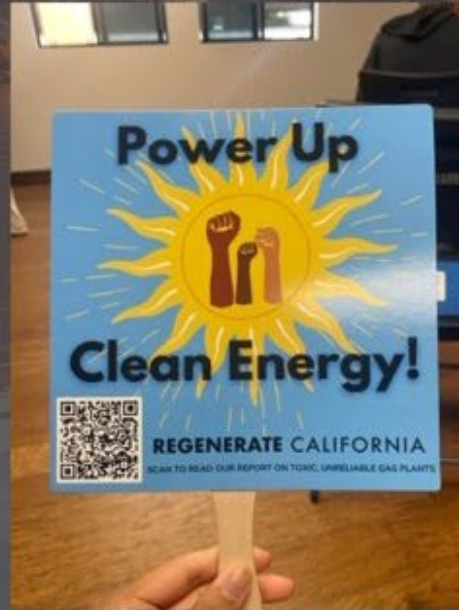


In the Community

Casa Familiar's Casa Fest



EHC Clean Air Congresso



Wave Fan Fest



Beautify Chula Vista



Enrollment Notices

"We're excited by more renewable energy generation in our region to help curb climate change and leave the planet in better shape for our kids!"

- The Morgan Family
San Diego

© 2022 Kaitlin Photography

Welcome to San Diego Community Power!

Visit us at SDCommunityPower.org

Say hello to a cleaner power provider who reinvests in our community.

Coming Spring 2023

San Diego Community Power (SDCP) is a local electricity provider that will serve your community by bringing you cleaner energy.

Visit us at SDCommunityPower.org

I know I'm making a difference using SDCP's clean energy.

Same! We're helping protect our environment and create a better future for our kids. 😊

Welcome! Learn more at SDCommunityPower.org

CHÀO MỪNG ĐẾN VỚI SAN DIEGO COMMUNITY POWER

Phục vụ cộng đồng của chúng ta bằng năng lượng sạch hơn, tái tạo ở mức giá cạnh tranh.

Ghé thăm chúng tôi tại trang mạng SDCommunityPower.org

COMING SOON:
Your Community-Based Clean Energy.

Cleaner energy choices, competitive electricity rates managed by the people who use it, and programs that benefit you.

Welcome to San Diego Community Power.

Visit us at SDCommunityPower.org

How It Works

SDCP	SDG&E	YOU GET
Buy electricity from renewable resources	Delivers power and maintains the grid	Cleaner power, local control, and competitive rates

Beginning in **May 2023**, San Diego Community Power will become your new electric generation service provider - meaning we will purchase renewable power, like solar and wind, and provide it to you at competitive rates. When you are automatically enrolled into our service, you'll receive our standard service offering, **PowerOn**, which provides SD's renewable energy and is priced competitively to what you are currently paying with San Diego Gas & Electric (SDG&E). You can always choose to return to SDG&E service, but you'll be missing out on some important benefits. With SDCP, you're empowered to choose a cleaner future.

Please note that rooftop solar customers and other customers participating in Net Energy Metering (NEM) will be automatically enrolled at the end of their relevant period (commonly referred to as "true-up"). For more information on enrollment, please see the FAQs on our website at: SDCommunityPower.org.

Benefits that you can expect from San Diego Community Power:

- Cleaner, renewable power at competitive prices
- Energy programs tailored to meet the needs of our communities
- Local control by local representatives who prioritize people and our communities
- Reinvestment of revenues into our community
- Support of local job creation and development of local renewable energy projects

To learn more about SDCP and our benefits, change your service level, or to opt out, visit: www.SDCommunityPower.org or call 1-888-382-0169.

Para obtener más información sobre SDCP y nuestros beneficios, cambiar su nivel de servicio o optar por no participar, visite: www.SDCommunityPower.org o llame al 1-888-382-0169.

Upang matuto nang higit pa tungkol sa SDCP at sa aming mga benepisyo, baguhin ang antas ng inyong serbisyo, o mag-opt out, bisitahin ang: www.SDCommunityPower.org o tumawag sa 1-888-382-0169.

Terms & Conditions of Service
San Diego Community Power electric generation rates are managed with the intention of providing cleaner electricity at competitive rates. Any changes to SDCP rates will be adopted at duly noticed public hearings of the San Diego Community Power Board of Directors. Changes to SDG&E or SDCP rates will impact cost comparisons between SDCP and SDG&E.
All SDG&E and SDCP customers pay a monthly Power Charge Indifference Adjustment (PCIA) and Franchise Fee Surcharge. SDCP has already accounted for these after-market charges in calculating rates. View SDCP rates and SDG&E cost comparisons on our website.
BILLING: You will receive a single monthly bill from SDG&E that includes SDCP's electric generation charges. SDCP's electric generation charge replaces SDG&E's electric generation charge. SDCP's charge is not a duplicate charge or extra fee. SDG&E will continue to charge you for electric delivery services. If you opt-out of SDCP, SDG&E will resume charging you for electric generation.
ENROLLMENT: As the default electricity provider for the cities of Chula Vista, Encinitas, Imperial Beach, La Mesa, and San Diego, you will be automatically enrolled into San Diego Community Power service unless you opt-out at least five business days before your meter read date during the enrollment month. Accounts will be automatically enrolled in SDCP's PowerOn on your regularly scheduled meter read on or after the first day of the enrollment month. You may choose to opt-up to Power100, which provides 100% renewable energy service at a slight premium.
For complete Terms and Conditions of Service, please visit SDCommunityPower.org or call SDCP at 1-888-382-0169.



Hola vecino - ¡bienvenido al vecindario!

Somos **San Diego Community Power (SDCP)**, su proveedor local de electricidad que le trae energía más limpia a precios competitivos. Como agencia pública de administración local y de base comunitaria, ponemos a nuestras comunidades en primer lugar, ayudándole a dar un paso gigantesco hacia un futuro energético más sostenible. Nos centramos en lo que más necesitan y desean nuestras comunidades cuando se trata de su energía. Cuando comenzó el servicio eléctrico, San Diego Community Power se convirtió en su nuevo proveedor de servicios de generación eléctrica, lo que significa que compramos energía renovable, como la solar y la eólica, y se la proporcionamos a precios competitivos a través de la red eléctrica existente.

¿Cómo Funciona?

SDCP	SDG&E	USTED OBTIENE
Compra la electricidad de fuentes renovables	Suministra energía y mantiene la red eléctrica	Energía más limpia, control local, y precios competitivos



Power Content Label Mailer

Power Content Label reflects 2022 verified electric resources for SDCP

This information is required by the California Energy Commission to be mailed to active SDCP customers.

The generation data represents energy procured during 2022 and is provided in the "Annual Report to the California Energy Commission: Power Source Disclosure Program."

A portion of SDCP's energy comes from clean, large hydroelectric power stations. Under California law, large hydroelectric power stations do not qualify as eligible renewable resources.

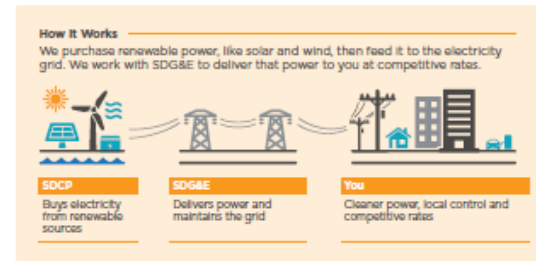
Percentages may not total 100% due to rounding.

2022 Power Content Label

2022 POWER CONTENT LABEL			
San Diego Community Power			
https://www.sdcop.com/energy/power-content-label			
Greenhouse Gas Emissions Intensity (lbs CO ₂ e/MWh)		Energy Resources	
2022 SDGP PowerOn Power Mix	2022 SDGP Power100 Power Mix	2022 SDGP PowerOn Power 2%	2022 SDGP Power100 Power 2%
375	6	422	
		Eligible Renewable Biomass & Densate 1.2% 0.0% 2.1% Geothermal 2.0% 0.0% 4.3% Eligible Hydroelectric 1.2% 0.0% 1.1% Solar 25.0% 30.0% 17.0% Wind 23.0% 30.0% 10.0% Coal 0.0% 0.0% 2.1% Large Hydroelectric 12.0% 0.0% 0.2% Natural Gas 0.0% 0.0% 36.4% Nuclear 0.0% 0.0% 0.2% Other 0.0% 0.0% 0.1% Unspecified Power* 33.1% 0.0% 7.1% TOTAL 100.0% 100.0% 100.0%	
Percentage of Retail Sales Covered by Retired Unbundled RECs†		0%	0%
*The eligible renewable percentage above does not reflect RPS compliance, which is determined using a different methodology. †Unspecified power is electricity that has been purchased through open market transactions and is not traceable to a specific generation source. ‡Renewable energy credits (RECs) are tracking instruments issued for renewable generation. Unbundled renewable energy credits (RECs) represent renewable generation that was not delivered to serve retail sales. Unbundled RECs are not reflected in the power mix or GHG emissions intensity above.			
For specific information about this electricity portfolio, contact:		San Diego Community Power 1 (888) 382-0189	
For general information about the Power Content Label, visit:		https://www.energy.ca.gov/programs-and-topics/programs/power-source-disclosure-program	

Powering a clean, affordable energy future

San Diego Community Power is your local provider of cleaner electricity at competitive rates. We are a locally run, not-for-profit public agency that invests in our customers to create an equitable and sustainable future for the San Diego region.



At SDCP we put our communities first through programs and customer education to help you take a giant step toward a more sustainable energy future

Cómo reducir el uso de energía y ahorrar dinero

Como tu proveedor comunitario de energía limpia, San Diego Community Power está aquí para ayudarte a gastar menos en tu factura, reducir la demanda en la red eléctrica, y mantenerte fresco y seguro durante tiempos de calor a través de consejos para administrar tu uso energético.



Antes de las 4 p.m.	Entre las 4 p.m. y las 9 p.m.
<p>“Preenfria” tu casa encendiendo tu aire acondicionado a 72 grados</p>	<p>Pon tu aire acondicionado a 78 grados, si la salud lo permite</p>
<p>Carga vehículos eléctricos</p>	<p>Evita el uso de electrodomésticos principales</p>
<p>Carga dispositivos portátiles</p>	<p>Apaga luces innecesarias</p>
<p>Usa lavavajillas, lavadoras, y otros electrodomésticos principales</p>	<p>Desenchufe aparatos eléctricos que no estén en uso</p>
<p>Configura las bombas de la piscina para que funcionen en la mañana o en la noche</p>	<p>Usa ventiladores cuando sea posible</p>
<p>Cierra persianas y cortinas</p>	<p>Limita el tiempo en el que el refrigerador está abierto</p>



Como su proveedor de electricidad local, San Diego Community Power tiene como objetivo brindarle energía confiable de fuentes renovables.

Nos centramos en lo que las familias más necesitan y quieren cuando se trata de energía: ya sea ahorrar dinero, conservar energía o aprender maneras nuevas de reducir su huella de carbono.

Ya sea para secar la ropa como para calentar el agua de su bañera, nuestros hogares usan mucha energía. Puede encontrar algunos recursos útiles en nuestro sitio web en [SDCommunityPower.org](https://www.sdcop.com/energy/power-content-label):

- Explicaciones y herramientas de las facturas de energía
- Pago de facturas y asistencia
- Centro de educación para los clientes
- Preguntas frecuentes

Escane el código QR para traducir este folleto. Read in English, Basahin sa Filipino, Đọc bằng tiếng Việt, 讀中文 讀 بالعربية اقرأ بالانجليزية

[SDCommunityPower.org/PCL](https://www.sdcop.com/energy/power-content-label)



Campaigns



Energy Efficiency for Every Day

Learn how to save on your energy bill

[GET TIPS](#)

Small Business Power100 Champions like Bivouac Ciderworks are helping secure our region's cleaner, greener future.

100% renewable,
100% carbon-free.

Save on Your Summer Energy Bill

Before 4pm	Between 4pm - 9pm
<p>Run major appliances</p>	<p>Avoid major appliances</p>

More tips at SDCommunityPower.org

Power100 is our most effective tier to help you reduce your carbon footprint. **Power100 energy content is 100% renewable, 100% carbon-free and eliminates your greenhouse gas production through electric energy use.** Service is available to all customers.

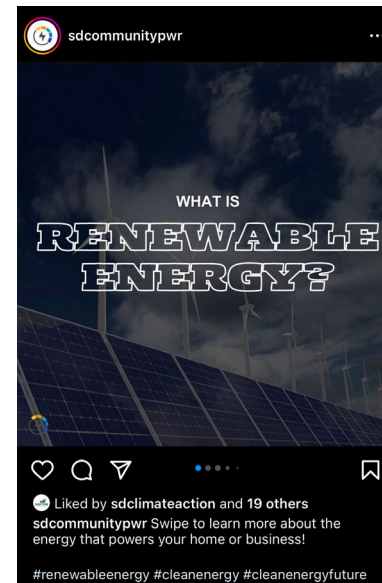
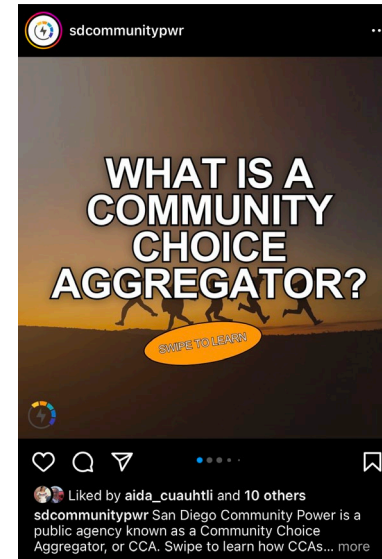
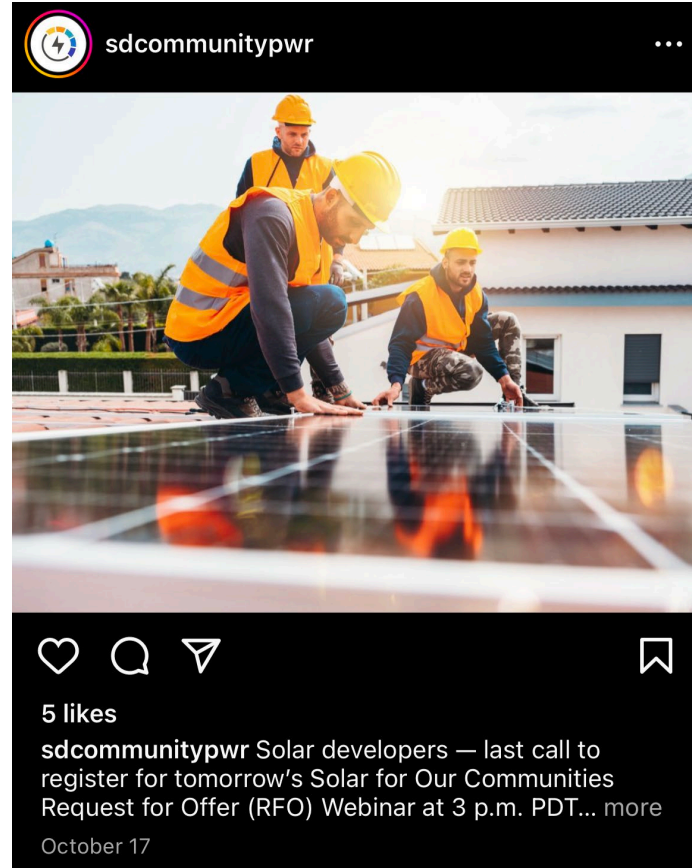
San Diego Community Power is proud of our Power100 Champions. Learn how you can opt up your home or business at SDCommunityPower.org

Bivouac Ciderworks is a women-powered craft cider company founded in North Park. Learn more at bivouaccider.com

@bivouaccider | Bivouac Cider 3986 30th St. San Diego, CA 92104



SDCP on Social



Community Partners



The Chicano Federation



PROJECT NEW VILLAGE
COMMUNITY • EQUITY • CHANGE



Building Trusted Partnerships



Powering the only 100% renewable energy ballpark in the National League.

PADRES 

San Diego International Airport Commits to 100 Percent Clean, Renewable Energy from San Diego Community Power




 | 



NEXT MATCH

SAT. APR 16 | 7:00 PM
TORERO STADIUM



SAN DIEGO COMMUNITY POWER

A CLEAN ENERGY PARTNER OF SAN DIEGO WAVE FC



Power100 CHAMPION

**100% renewable
100% carbon-free**

illumina



Thank You!

