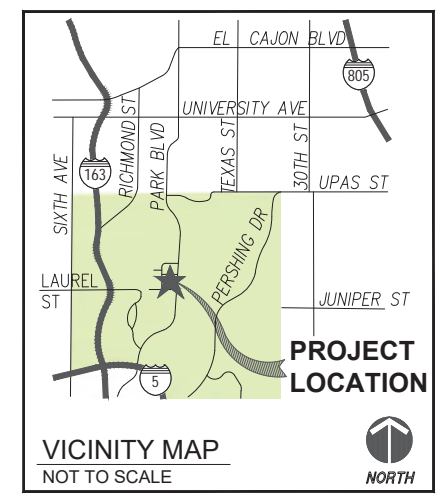


Design Concept

Set within the diverse cultural campus of Balboa Park at the eastern end of the Prado with views to Florida Canyon beyond, The Nat's location is uniquely well-suited to engage the wide range of Park visitors and demonstrate The Nat's Mission "...to promote understanding of the evolution and diversity of southern California and the peninsula of Baja California; and to inspire in all a respect for nature and the environment". The formal arrangement of Balboa Park's promenades and buildings among the meandering fingers of canyons and mesas makes a rich context for The Nat's message.

The Landscape Master Plan includes for gardens and outdoor gathering spaces located around The Nat building perimeter.

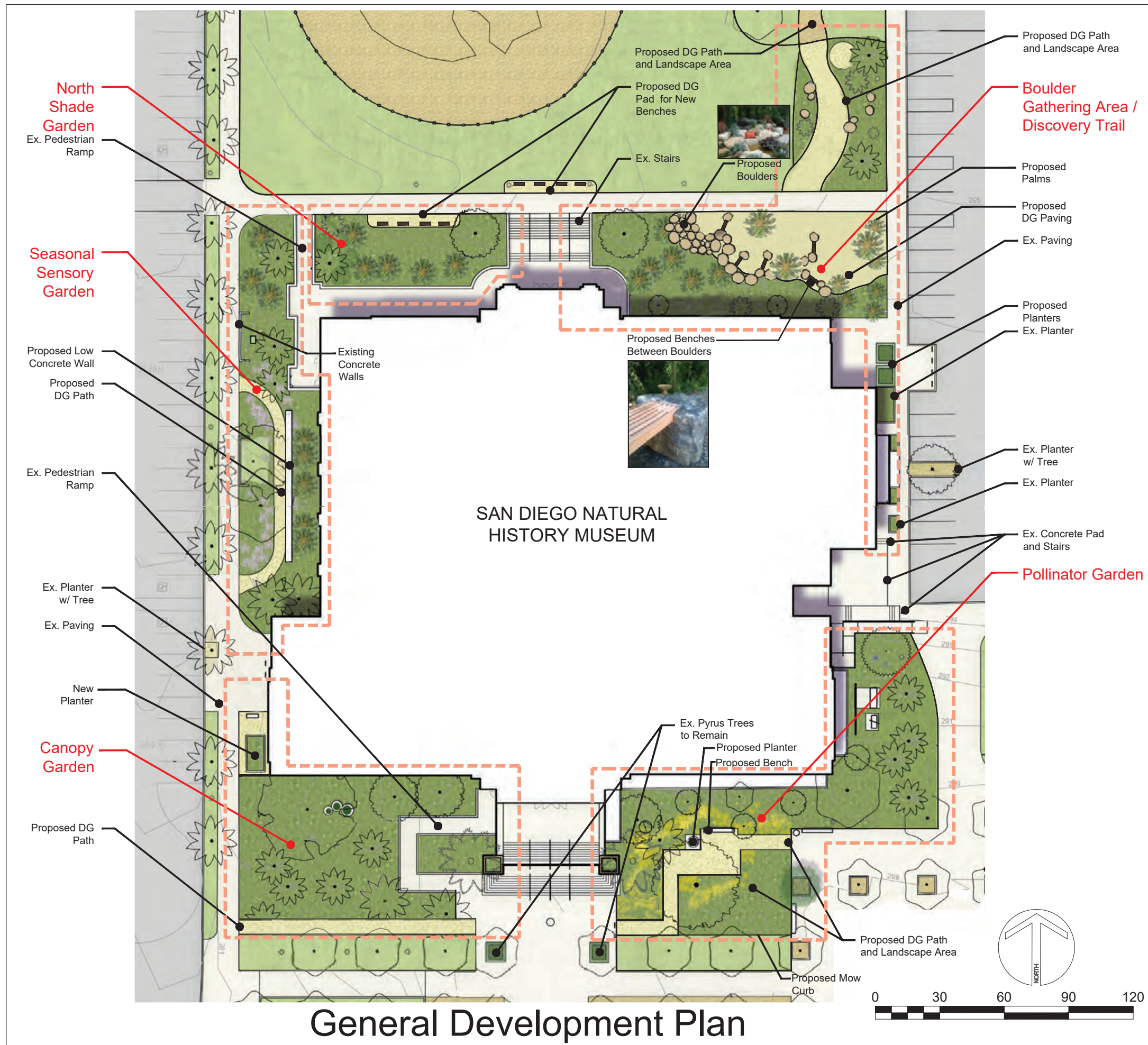
All new PAVING will be permeable Decomposed Granite (DG).
All Historically Significant Trees to Remain.



SPURLOCK

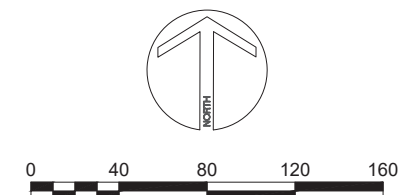
SEPTEMBER 20, 2021 LANDSCAPE ARCHITECTS
CITY OF SAN DIEGO PARK AND RECREATION DEPARTMENT

THE GENERAL DEVELOPMENT PLAN
SAN DIEGO NATURAL HISTORY MUSEUM
EXTERIOR LANDSCAPE IMPROVEMENTS
SHEET 1 OF 3
PSD
(PSD #)





Aerial Photograph



SPURLOCK

SEPTEMBER 20, 2021 LANDSCAPE ARCHITECTS
CITY OF SAN DIEGO PARK AND RECREATION DEPARTMENT

THE GENERAL DEVELOPMENT PLAN
**SAN DIEGO NATURAL
HISTORY MUSEUM**
EXTERIOR LANDSCAPE IMPROVEMENTS
SHEET 2 OF 3
PSD
(PSD #)

Plant Legend

Plants such as:

	Common Name	Scientific Name		Common Name	Scientific Name		Common Name	Scientific Name		
Boulder Gathering Area/ Discovery Trail	Bladderpod	Peritoma arborea	Canopy Garden	Canyon grey	Artemisia californica 'montara'	Seasonal Sensory Garden	Agave	Agave spp. (Entrance)		
	Blue dicks	Dichelostemma capitatum		Ceanothus spp.	Ceanothus sp.		Beardtongues	Penstemon spp		
	Blue Eyed Grass	Sisyrinchium angustifolium		Channel Islands Tree Poppy	Dendromecon harfordii		Blue Elderberry	Sambucus mexicanus		
	Boojum	Fouquieria columnaris		Coral bells	Heuchera spp		CA Sunflower	Helianthus californicus		
	CA Buckwheat	Eriogonum fasciculatum		Currant / Fuschia Flower Gooseberry	Ribes spp.		CA Wildrose	Rosa californica		
	Chuparosa	Justicia californica		Foxtail Agave	Agave attenuata		California Aster	Corethrogyne filaginifolia		
	Datilillo Yucca	Yucca valida		Hummingbird sage	Salvia spathacea		California Sagebrush	Artemisia californica		
	Desert Apricot	Prunus fremontii		Island Bush Poppy	Dendromecon rigida		Cleveland sage hybrids	Salvia 'Poza Blue'		
	Desert Fan Palm	Washingtonia filifera		Snow berry	Symphoricarpos alba		Deerweed	Acemison glaber		
	Desert Globemallow	Sphaeralcea ambigua		Western Swordfern	Polystichum munitum		Grape Soda Lupine	Lupinus excubitus		
	Field Sedge	Carex praegracilis		Agave	Agave spp. (entrance)		Jojoba	Simmondsia chinensis		
	Giant Cardon	Pachycereus pringlei		Basket rush	Juncus textilis		Lemmon's Marigold	Tagetes lemonii		
	Giant Chain Fern	Woodwardia fimbriata		Beardtongues	Penstemon spp		Lemonade Berry	Rhus integrifolia		
	Mexican Blue Palm	Brahea armata		Buckthorn	Rhamnus spp		Lewis' Mock Orange	Philadelphus lewisii		
	Nodding Needle Grass	Stipa cernua		CA Sunflower	Helianthus californicus		Mexican bush sage	Salvia lucanthea		
	Pacific Coast Iris	Iris Sp.		CA Wildrose	Rosa californica		Mexican holdback	Ceasalpinia mexicana		
	Palo Verde	Parkinsonia sp.		California Sagebrush	Artemisia californica		Mint species	Salvia spp		
	Pink Fairy Duster	Calliandra eriophylla		Cleveland sage hybrids	Salvia 'Poza Blue'		Mock orange	Philadelphus lewisii		
	Pink Hair Grass	Muhlenbergia capillaris		Coyote Brush	Baccharis pilularis		Monkeyflower	Erythranthe sp.		
	Purple Three-awn	Aristida purpurea		Deerweed	Acemison glaber		Nolina	Nolina sp.		
	Western Swordfern	Polystichum munitum		Grape Soda Lupine	Lupinus excubitus		Parish's Rabbitbrush	Ericameria parishii		
	Britton's Dudleya	Dudleya brittonii		Jojoba	Simmondsia chinensis		Pearly Everlasting	Symphoricarpos alba		
	Coast Cholla	Cylindropuntia prolifera		Lemmon's Marigold	Tagetes lemonii		Sages (variety)	Salvia sp.		
	Dahlia Root Cereus	Peniocereus striatus		Mexican holdback	Ceasalpinia mexicana		Showy Snapdragon	Galvezia speciosaii		
	Elephant Tree	Bursera microphylla		Mint species	Salvia spp		Small Leaved Rose	Rosa minutifolia		
	Fingertips	Dudleya edulis		Mock orange	Philadelphus lewisii		Torrey's Hybrid Oak	Quercus acutidens		
	Golden spine cereus	Bergerocactus emoryi		Monkeyflower	Erythranthe sp.		Wild cucumber/ Chilicothe	Marah macrocarpa		
	Ocotillo	Fouquieria splendens		Nolina	Nolina sp.		Wishbone Bush	Mirabilis sp.		
	Plumeria	Plumeria rubra		Parish's Rabbitbrush	Ericameria parishii		Yucca	Yucca spp.		
	Spurge	Euphorbia xanti		Pearly Everlasting	Symphoricarpos alba					
	Pollinator Garden	Baja Fairy Duster		Calliandra californica	Sages (variety)		Salvia sp.	North Shade Garden	Bee Plant	Scrophularia californica
		Burgandy Deserte Willow		Chilopsis burgandy	Showy Snapdragon		Galvezia speciosaii		Catalina Currant	Ribes viburnifolium
		Bush Anemone		Carpenteria californica	Small Leaved Rose		Rosa minutifolia		Coral Bells	Heuchera spp
CA Coffee Berry		Rhamnus californica	Torrey's Hybrid Oak	Quercus acutidens	Desert Fan Palm	Washingtonia filifera				
CA Everlasting		Pseudognaphalium californium	Wild cucumber/ Chilicothe	Marah macrocarpa	Desert Wild Grape	Vitis girdiana				
CA Lilac; Ceanothus		Ceanothus spp.	Wishbone Bush	Mirabilis sp.	Desert Willow	Chilopsis linearis				
CA Poppy		Eschscholzia californica	Yucca	Yucca spp.	Giant Chain Fern	Woodwardia fimbriata				
CA Sunflower		Helianthus californicus			Gooseberry	Ribes speciosum				
Desert Willow		Chilopsis linearis			Guadalupe Island Palm	Brahea edulis				
Golden Yarrow		Achillea millefolium			Heartleaf penstemon	Keckiella cordifolia				
Golden Yarrow		Eriophyllum confertiflorum			Honeysuckle	Subspecata denidada				
Lavatera		Lavatera assurgentiflora			Mahonia	Mahonia spp				
Manzanita		Arctostaphylos spp			Mexican Blue Palm	Brahea armata				
Mint species		Salvia clevelandii			Mexican Fan Palm	Washingtonia robusta				
Penstemon		Penstemon spp.			Miner's Lettuce	Claytonia perfoliata				
San Diego Co. Sunflower		Viguiera lacinata			Monkeyflower	Eryranthe cardinalis				
Sticky Monkey Flower		Mimulus aurantiacus			Narrow Leaved Bedstraw	Galium angustifolium				
Yellow Trumpetbush		Tecoma stans			Narrow-leaf milkweed	Asclepias fascicularis				
Asclepias californica		California Milkweed			Scrub Oak	Quercus berberidifolia				
					Spiney Rush	Juncus acutus				
				Western Swordfern	Polystichum munitum					
				Western Sycamore	Platanus racemosa					
				Yerba Mansa	Anemopsis californica					



SPURLOCK

SEPTEMBER 20, 2021 LANDSCAPE ARCHITECTS
CITY OF SAN DIEGO PARK AND RECREATION DEPARTMENT

THE GENERAL DEVELOPMENT PLAN
SAN DIEGO NATURAL HISTORY MUSEUM
 EXTERIOR LANDSCAPE IMPROVEMENTS
 SHEET 3 OF 3
 PSD (PSD #)



THE CITY OF SAN DIEGO
M E M O R A N D U M

DATE: November 15, 2023
TO: Rania Amen, Director, Engineering & Capital Projects Department
FROM: Andy Field, Director, Parks and Recreation Department
SUBJECT: General Development Plan Approvals for Multiple Parks

The Parks and Recreation Board has reviewed and recommended approval of the new or amended General Development Plans for the following parks:

<u>Project Name:</u>	<u>Date Reviewed:</u>
3 Roots Community Park (Bruce Brown Community Park)	November 19, 2020
Allied Gardens Community Park (Dog Off-Leash Area)	April 20, 2023
Balboa Park Natural History Museum Gardens	October 21, 2021
Beyer Community Park	September 17, 2020
Boone Elementary School Joint Use Facility	February 17, 2022
Chollas Triangle Park	November 17, 2022
Eastbourne Neighborhood Park	February 16, 2023
Emerson Elementary School Joint Use Facility	May 19, 2022
Epoca Neighborhood Park	September 15, 2022
Eugene Brucker Education Center (Dog Off-Leash Area)	April 21, 2022
Hidden Trails Neighborhood Park	January 21, 2021
John Baca Neighborhood Park	June 17, 2021
Junipers Neighborhood Park	April 15, 2021
Linda Vista Community Park (Community Garden)	April 21, 2022
Marston Middle School Joint Use Facility	January 20, 2022
Martinez Neighborhood Park	September 15, 2022
Mission Bay High School Joint Use Facility	February 17, 2022
Mission Gorge Park	January 21, 2021
Normal Heights Elementary Joint Use Facility	March 17, 2022
North Park Community Park (Dog Off-Leash Area)	May 19, 2022
Shoal Creek Neighborhood Park	February 16, 2023
Southwest Neighborhood Park (Grove Neighborhood Park)	February 18, 2021

Project Name:

Date Reviewed:

Ward Canyon Neighborhood Park (Dog Off-Leash Area)

June 16, 2022

Whitman Elementary School Joint Use Facility

February 18, 2021

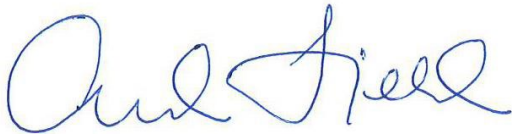
Wilson Middle School Joint Use Facility

January 20, 2022

Based on the recommendations from the Parks and Recreation Board, the Parks and Recreation Department hereby approves all the General Development Plans for the projects listed above.

If you have questions or would like additional information, please reach out to me at afield@sandiego.gov or (619) 235-1110.

Thank you,



Andy Field, Director
Parks and Recreation Department

AF/mg

Attachments: General Development Plans (for listed projects)

cc: Karen Dennison, Assistant Director, Parks and Recreation Department
Tom Tomlinson, Assistant Director, Parks and Recreation Department
Steve Palle, Deputy Director, Parks and Recreation Department
Gina Dulay, Deputy Director, Parks and Recreation Department
Heidi Vonblum, Planning Director, Planning Department
Michelle Abella-Shon, Program Manager, Parks and Recreation Department
Ryan Barbrick, Supervising Management Analyst, Parks and Recreation Department