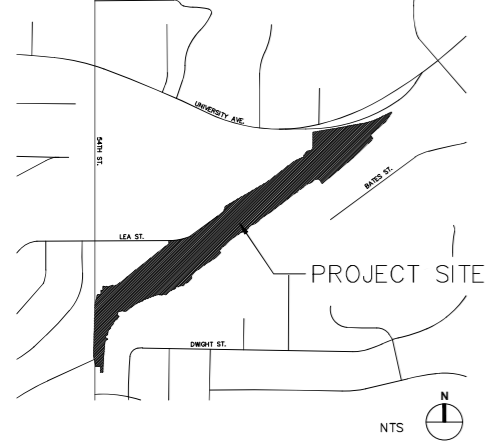


VICINITY MAP



PLANTING LEGEND

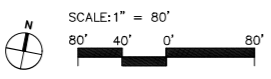
- 40' CANOPY TREE, SUCH AS:**
QUERCUS AGRIFOLIA
ALNUS RHOMBIFOLIA
- 25' CANOPY TREE, SUCH AS:**
PLATANUS RACEMOSA
POPULUS FREMONTII
- STREET TREE, SUCH AS:**
LOPHOSTEMON CONFERTUS
ULMUS PARVIFOLIA
- ACCENT TREE, SUCH AS:**
CERCIS CANADENSIS 'FOREST PANSY'
LAGERSTROEMIA INDICA
PARKINSONIA X 'DESERT MUSEUM'
ARBUTUS 'MARINA'
- SCREENING HEDGE**
PITTOSPORUM TENUIFOLIUM SP.
ACACIA CULTRIFORMIS
DODONAEA VISCOSA
- PARK UNDERSTORY, SUCH AS:**
AGAVE SP.
DASYLIRION WHEELERI
MUEHLBERGIA DUBIA
HESPERALOE PARVIFLORA
- BUFFER, SUCH AS:**
SALVIA APIANA
ERIOGONUM FASCICULATUM
YUCCA WHIPPLEI
BACCHARIS PILLULARIS 'PIGEON POINT'
- BIOSWALE, SUCH AS:**
CAREX SPISSA
FESTUCA RUBRA
LEYMUS CONDENSATUS 'CANYON PRINCE'
ACHILLEA MILLEFOLIUM
JUNCUS PATENS
- TURF, SUCH AS:**
TURF SOD MIX SUCH AS:
GN-1 HYBRID BERMUDA

IMPROVEMENTS LEGEND

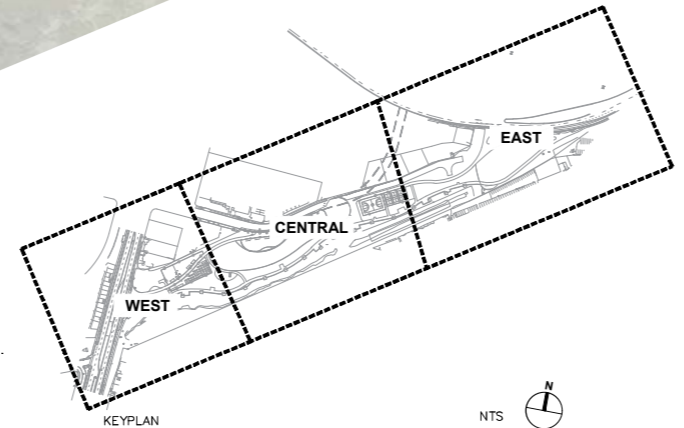
- ① **EVENT PLAZA**
 - ② **MULTI-PURPOSE LAWN**
 - ③ **12' CONCRETE PERIMETER PATH**
 - ④ **12' DECOMPOSED GRANITE MULTI-PURPOSE PATH**
 - ⑤ **VEGETATIVE STORMWATER BASIN WITH COBBLE AND BOULDERS**
 - ⑥ **OFF LEASH DOG AREA FOR LARGE AND SMALL DOGS WITH 4'H PERIMETER FENCE**
 - ⑦ **COMMUNITY GARDEN WITH 6'H PERIMETER FENCE**
 - ⑧ **NATURE EXPLORATION AREA WITH LOGS, BOULDERS, STUMPS, INTERPRETIVE SIGNAGE AND FIBAR PLAY SURFACING**
 - ⑨ **PLAY AREA WITH P.I.P. RUBBERIZED PLAY SURFACING**
 - ⑩ **BASKETBALL COURT WITH 10'H PERIMETER FENCE**
 - ⑪ **PICKLEBALL COURT WITH 6'H PERIMETER FENCE**
 - ⑫ **FITNESS EQUIPMENT AREA WITH P.I.P. RUBBERIZED SURFACING**
 - ⑬ **TEMPORARY ACCESS ROAD**
 - ⑭ **FUTURE LEA ST. EXTENSION**
(THE EXTENSION OF LEA STREET IS SHOWN FOR REFERENCE ONLY AND NOT PART OF THE GDP)
 - ⑮ **ON-STREET PARKING, MINIMUM 14 SPACES**
- RIPARIAN BUFFER
--- LIMIT OF WORK

HARDSCAPE LEGEND

- CONCRETE**
- ASPHALT**
- TEMPORARY ACCESS**
- P.I.P. RUBBERIZED SOFT SURFACING**
- SPORTS COURT SURFACING**
- DECOMPOSED GRANITE**
- BARK MULCH**
- FIBAR**
- COBBLE**



SPURLOCK
LANDSCAPE ARCHITECTS
2130 Hammonk Street
San Diego, California 92110
619.691.0090
spurlock-land.com



DATE	ACTION	REFERENCE DOCUMENTS
	SITE ACQUIRED	RESO. NO. COST \$: ACRES:
	SITE DEDICATED	ORD. NO. ACRES:
	GDP CONSULTANT HIRED	RESO. NO. NAME:
	P&R BOARD APPROVAL	PF&R APPROVAL DATE: 11/17/21
	INITIAL DEVELOPMENT	CIP NO. J.O. NO. DRWG. NO.
		CIP NO. J.O. NO. DRWG. NO.
		CIP NO. J.O. NO. DRWG. NO.
		CIP NO. J.O. NO. DRWG. NO.
		CIP NO. J.O. NO. DRWG. NO.
		CIP NO. J.O. NO. DRWG. NO.
		CIP NO. J.O. NO. DRWG. NO.

IMPROVEMENTS SUMMARY (DATA FROM AS-BUILT DRAWINGS)							
ITEM	QUANTITY	ITEM	QUANTITY	ITEM	QUANTITY	ITEM	QUANTITY
TOTAL SITE	9.7 AC	AMPHITHEATER	3,290 SF	CONCRETE WALKWAYS	60,590 SF	SECURITY LIGHTS	67
IMPROVED AREA	9.7 AC	NATURE EXPLORATION	3,235 SF	D.G. PAVING	51,165 SF	ENTRY SIGNAGE	3
TURF	1.75 AC	PLAY AREA 2-5, 5-12	8,383 SF	SPORTS SURFACING	12,575 SF	PARK SIGNAGE	4
UNDERSTORY PLANTING	1.87 AC	BIKE RACK	6	RUBBERIZED SURFACE	10,963 SF	TUBE STEEL SWING GATE	1
BUFFER PLANTING	97 AC	BASKETBALL COURT	7,175 SF	ACCESSIBLE CURB RAMP	138 SF	PICNIC TABLES	11
VEGETATIVE BASIN	22,172 SF	PICKLEBALL COURT	5,400 SF	CONCRETE MOW CURB	642 LF	BBQ	5
MULCH AREA	1,420 SF	FITNESS EQUIPMENT	11 PCS	C.I.P. CONCRETE WALL	245 LF	BENCH W/ BACK	42
FIBAR	3,235 SF	SWING SET W/ 4 SWINGS	1	PET WASTE STATION	2	REMOVABLE BOLLARDS	1
TREES	210	PREFAB RESTROOM	132 SF	PERIMETER FENCING	1,884 LF	DRINKING FOUNTAIN	4
DOG PARK	10,080 SF	SHADE CANOPY STRUCTURE	5,603 SF	BOULDERS 3X3, 4X4, 5X5	301	TRASH RECEPTACLES	5 SETS
GARDEN BEDS 5' X 20'	20	COBBLE	921 SF	SEATING BOULDERS	8	REVISION	

CITY OF SAN DIEGO PARK AND RECREATION DEPARTMENT

THE GENERAL DEVELOPMENT PLAN

CHOLLAS TRIANGLE PARK

LAMBERT COORDINATES: 212-1746 THOMAS BROTHERS PAGE: 1270, GRID B5 & B6



PLANTING LEGEND

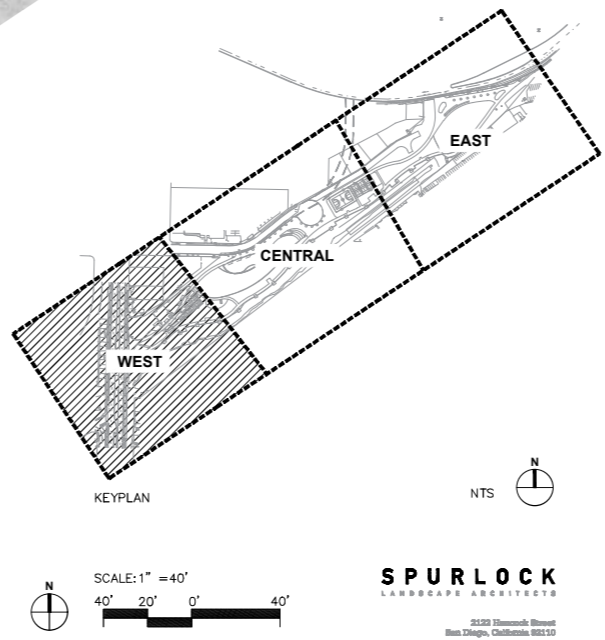
- 40' CANOPY TREE, SUCH AS:**
 - QUERCUS AGRIFOLIA
 - ALNUS RHOMBIFOLIA
- 25' CANOPY TREE, SUCH AS:**
 - PLATANUS RACEMOSA
 - POPULUS FREMONTII
- STREET TREE, SUCH AS:**
 - LOPHOSTEMON CONFERTUS
 - ULMUS PARVIFOLIA
- ACCENT TREE, SUCH AS:**
 - CERCIS CANADENSIS 'FOREST PANSY'
 - LAGERSTROEMIA INDICA
 - PARKINSONIA X 'DESERT MUSEUM'
 - ARBUTUS 'MARINA'
- SCREENING HEDGE**
 - PITTOSPORUM TENUIFOLIUM SP.
 - ACACIA CULTRIFORMIS
 - DODONAEA VISCOSA
- PARK UNDERSTORY, SUCH AS:**
 - AGAVE SP.
 - DASYLIRION WHEELERI
 - MUHLENBERGIA DUBIA
 - HESPERALOE PARVIFLORA
 - SALVIA APIANA
- BUFFER, SUCH AS:**
 - SALVIA APIANA
 - ERIOGONUM FASCICULATUM
 - YUCCA WHIPPLEI
 - BACCHARIS PILLULARIS 'PIGEON POINT'
- BIOSWALE, SUCH AS:**
 - CAREX SPISSA
 - FESTUCA RUBRA
 - LEYMUS CONDENSATUS 'CANYON PRINCE'
 - ACHILLEA MILLEFOLIUM
 - JUNCUS PATENS
- TURF, SUCH AS:**
 - TURF SOD MIX SUCH AS:
 - GN-1 HYBRID BERMUDA

HARDSCAPE LEGEND

- CONCRETE
- ASPHALT
- TEMPORARY ACCESS
- P.I.P. RUBBERIZED SOFT SURFACING
- SPORTS COURT SURFACING
- DECOMPOSED GRANITE
- BARK MULCH
- FIBAR
- COBBLE
- RIPARIAN BUFFER
- LIMIT OF WORK

IMPROVEMENTS LEGEND

- MULTI-PURPOSE LAWN
- AMPHITHEATER
- 12' CONCRETE PERIMETER PATH
- 12' DECOMPOSED GRANITE MULTI-PURPOSE PATH
- VEGETATIVE STORMWATER BASIN WITH COBBLE AND BOULDERS
- OFF-LEASH DOG AREA FOR LARGE AND SMALL DOGS WITH 4'H PERIMETER FENCE
- COMMUNITY GARDEN WITH 6'H PERIMETER FENCE
- NATURE EXPLORATION AREA WITH LOGS, BOULDERS, STUMPS, INTERPRETIVE SIGNAGE AND FIBAR PLAY SURFACING
- PLAY AREA WITH P.I.P. RUBBERIZED PLAY SURFACING AND SHADE SAIL STRUCTURES
- BASKETBALL COURT WITH 10'H PERIMETER FENCE
- PICKLEBALL COURT WITH 6'H PERIMETER FENCE
- FITNESS AREA WITH P.I.P. RUBBERIZED SURFACING WITH RUNNING TRACK STRIPING AND SIGNAGE
- FITNESS EQUIPMENT STATION
- PRE-FABRICATED ACCESSIBLE COMFORT STATION WITH BOTTLE FILLING STATION AND TRASH AND RECYCLING RECEPTACLES
- METAL SHADE STRUCTURE
- TEMPORARY ACCESS ROAD
- FUTURE LEA ST. EXTENSION (THE EXTENSION OF LEA STREET IS SHOWN FOR REFERENCE ONLY AND NOT PART OF THE GDP)
- ON-STREET PARKING, MINIMUM 14 SPACES
- SPLIT RAIL FENCE
- INTERPRETIVE SIGNAGE
- MONUMENT SIGN
- PICNIC TABLE
- BOULDER SEATING
- BENCH WITH BACK
- BIKE RAMP
- 12' WIDE VEHICULAR ACCESS GATE
- PAINTED 40YD DASH TRACK ON CONCRETE WITH RUNNING CIRCUIT SIGNAGE AROUND SPORTS COURTS
- BOULDER RETAINING WALL
- CONCRETE SEATWALL
- CONCRETE FLUSH CURB
- BBQ
- PET WASTE STATION
- BIKE RACK
- TUBE STEEL SWING GATE
- BOULDERS
- LOGS
- ACCESSIBLE DRINKING FOUNTAIN
- ACCESSIBLE DRINKING FOUNTAIN WITH DOG BOWL
- TRASH AND RECYCLING RECEPTACLES
- SITE SECURITY LIGHTING
- ROLLED CURB WITH REMOVABLE BOLLARD
- ADA RAMP



SPURLOCK
LANDSCAPE ARCHITECTS

DATE	ACTION	REFERENCE DOCUMENTS
	SITE ACQUIRED	RESO. NO. COST \$. ACRES:
	SITE DEDICATED	ORD. NO. ACRES:
	GDP CONSULTANT HIRED	RESO. NO. NAME:
	P&R BOARD APPROVAL	PF&R APPROVAL DATE: 11/17/21
	INITIAL DEVELOPMENT	CIP NO. J.O. NO. DRWG. NO.

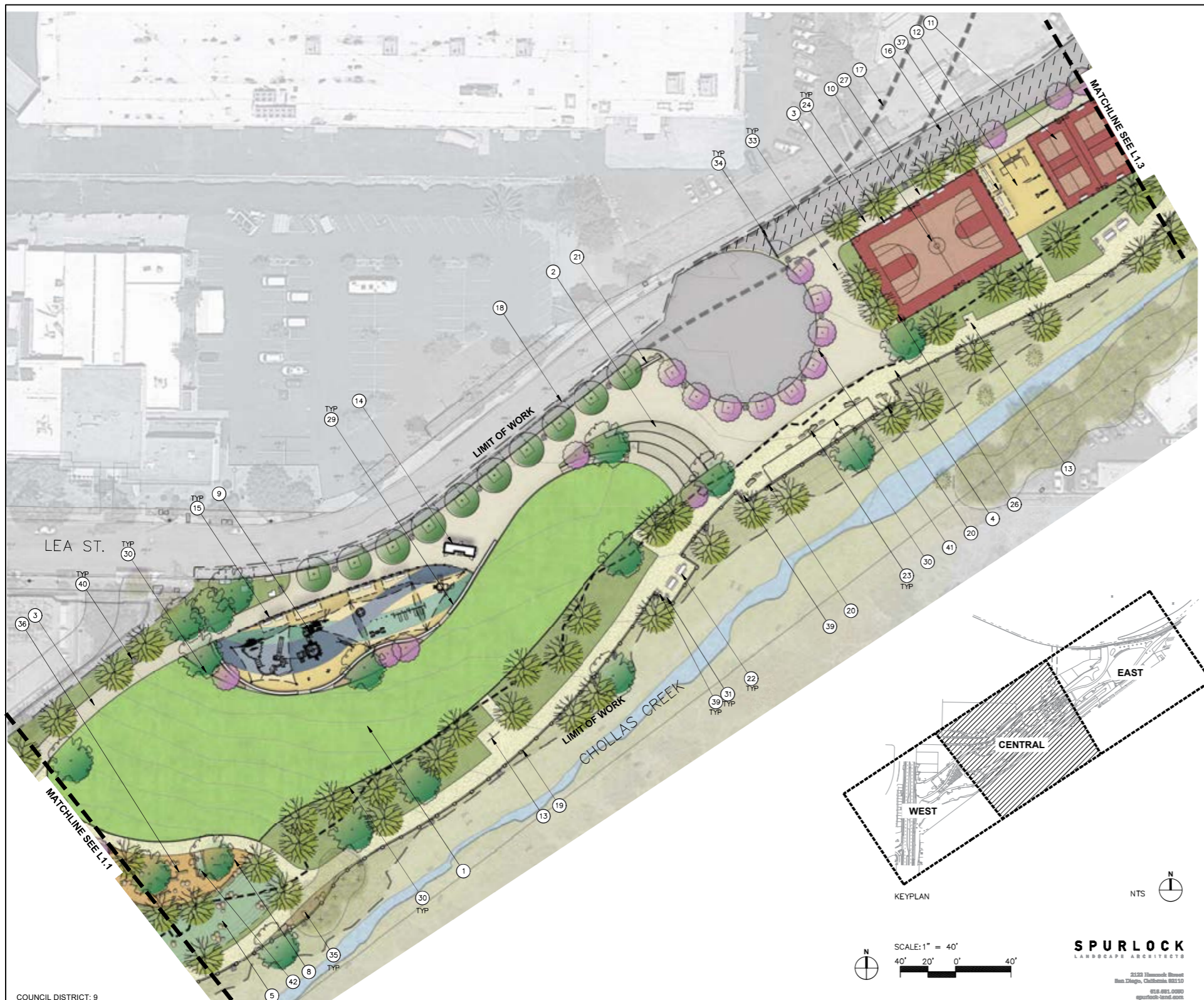
IMPROVEMENTS SUMMARY (DATA FROM AS-BUILT DRAWINGS)							
ITEM	QUANTITY	ITEM	QUANTITY	ITEM	QUANTITY	ITEM	QUANTITY
TOTAL SITE	9.7 AC	AMPHITHEATER	3,290 SF	CONCRETE WALKWAYS	60,590 SF	SECURITY LIGHTS	67
IMPROVED AREA	9.7 AC	NATURE EXPLORATION	3,235 SF	D.G. PAVING	51,165 SF	ENTRY SIGNAGE	3
TURF	1.75 AC	PLAY AREA 2-5, 5-12	8,383 SF	SPORTS SURFACING	12,575 SF	PARK SIGNAGE	4
UNDERSTORY PLANTING	1.87 AC	BIKE RACK	6	RUBBERIZED SURFACE	10,963 SF	TUBE STEEL SWING GATE	1
BUFFER PLANTING	97 AC	BASKETBALL COURT	7,175 SF	ACCESSIBLE CURB RAMP	138 SF	PICNIC TABLES	11
VEGETATIVE BASIN	22,172 SF	PICKLEBALL COURT	5,400 SF	CONCRETE MOW CURB	642 LF	BBQ	5
MULCH AREA	1,420 SF	FITNESS EQUIPMENT	11 PCS	C.I.P. CONCRETE WALL	245 LF	BENCH W/ BACK	42
FIBAR	3,235 SF	SWING SET W/ 4 SWINGS	1	PET WASTE STATION	2	REMOVABLE BOLLARDS	1
TREES	210	PREFAB RESTROOM	132 SF	PERIMETER FENCING	1,884 LF	DRINKING FOUNTAIN	4
DOG PARK	10,080 SF	SHADE CANOPY STRUCTURE	5,603 SF	BOULDERS 3X3, 4X4, 5X5	301	TRASH RECEPTACLES	5 SETS
GARDEN BEDS 5' X 20'	20	COBBLE	921 SF	SEATING BOULDERS	8	REVISION	8

CITY OF SAN DIEGO PARK AND RECREATION DEPARTMENT

THE GENERAL DEVELOPMENT PLAN

CHOLLAS TRIANGLE PARK

LAMBERT COORDINATES: 212-1746 THOMAS BROTHERS PAGE: 1270, GRID B5 & B6



PLANTING LEGEND

- 40' CANOPY TREE, SUCH AS:**
QUERCUS AGRIFOLIA
ALNUS RHOMBIFOLIA
- 25' CANOPY TREE, SUCH AS:**
PLATANUS RACEMOSA
POPULUS FREMONTII
- STREET TREE, SUCH AS:**
LOPHOSTEMON CONFERTUS
ULMUS PARVIFOLIA
- ACCENT TREE, SUCH AS:**
CERCIS CANADENSIS 'FOREST PANSY'
LAGERSTROEMIA INDICA
PARKINSONIA X 'DESERT MUSEUM'
ARBUTUS 'MARINA'
- SCREENING HEDGE**
PITTIOSPORUM TENUIFOLIUM SP.
ACACIA CULTRIFORMIS
DODONAEA VISCOSA
- PARK UNDERSTORY, SUCH AS:**
AGAVE SP.
DASYLIRION WHEELERI
MUHLENBERGIA DUBIA
HESPERALOE PARVIFLORA
SALVIA APIANA
- BUFFER, SUCH AS:**
SALVIA APIANA
ERIOGONUM FASCICULATUM
YUCCA WHIPPLEI
BACCHARIS PILULARIS 'PIGEON POINT'
- BIOSWALE, SUCH AS:**
CAREX SPISSA
FESTUCA RUBRA
LEYMUS CONDENSATUS 'CANYON PRINCE'
ACHILLEA MILLEFOLIUM
JUNCUS PATENS
- TURF, SUCH AS:**
TURF SOD MIX SUCH AS:
GN-1 HYBRID BERMUJA

HARDSCAPE LEGEND

- CONCRETE
- ASPHALT
- TEMPORARY ACCESS
- P.I.P. RUBBERIZED SOFT SURFACING
- SPORTS COURT SURFACING
- DECOMPOSED GRANITE
- BARK MULCH
- FIBAR
- COBBLE
- RIPARIAN BUFFER
- LIMIT OF WORK

IMPROVEMENTS LEGEND

- MULTI-PURPOSE LAWN
- AMPHITHEATER
- 12' CONCRETE PERIMETER PATH
- 12' DECOMPOSED GRANITE MULTI-PURPOSE PATH
- VEGETATIVE STORMWATER BASIN WITH COBBLE AND BOULDERS
- OFF-LEASH DOG AREA FOR LARGE AND SMALL DOGS WITH 4'H PERIMETER FENCE
- COMMUNITY GARDEN WITH 6'H PERIMETER FENCE
- NATURE EXPLORATION AREA WITH LOGS, BOULDERS, STUMPS, INTERPRETIVE SIGNAGE AND FIBAR PLAY SURFACING
- PLAY AREA WITH P.I.P. RUBBERIZED PLAY SURFACING AND SHADE SAIL STRUCTURES
- BASKETBALL COURT WITH 10'H PERIMETER FENCE
- PICKLEBALL COURT WITH 6'H PERIMETER FENCE
- FITNESS AREA WITH P.I.P. RUBBERIZED SURFACING WITH RUNNING TRACK STRIPING AND SIGNAGE
- FITNESS EQUIPMENT STATION
- PRE-FABRICATED ACCESSIBLE COMFORT STATION WITH BOTTLE FILLING STATION AND TRASH AND RECYCLING RECEPTACLES
- METAL SHADE STRUCTURE
- TEMPORARY ACCESS ROAD
- FUTURE LEA ST. EXTENSION
(THE EXTENSION OF LEA STREET IS SHOWN FOR REFERENCE ONLY AND NOT PART OF THE GDP)
- ON-STREET PARKING, MINIMUM 14 SPACES
- SPLIT RAIL FENCE
- INTERPRETIVE SIGNAGE
- MONUMENT SIGN
- PICNIC TABLE
- BOULDER SEATING
- BENCH WITH BACK
- BIKE RAMP
- 12' WIDE VEHICULAR ACCESS GATE
- PAINTED 40YD DASH TRACK ON CONCRETE WITH RUNNING CIRCUIT SIGNAGE AROUND SPORTS COURTS
- BOULDER RETAINING WALL
- CONCRETE SEATWALL
- CONCRETE FLUSH CURB
- BBQ
- PET WASTE STATION
- BIKE RACK
- TUBE STEEL SWING GATE
- BOULDERS
- LOGS
- ACCESSIBLE DRINKING FOUNTAIN
- ACCESSIBLE DRINKING FOUNTAIN WITH DOG BOWL
- TRASH AND RECYCLING RECEPTACLES
- SITE SECURITY LIGHTING
- ROLLED CURB WITH REMOVABLE BOLLARD
- ADA RAMP

COUNCIL DISTRICT: 9

DATE	ACTION	REFERENCE DOCUMENTS
	SITE ACQUIRED	RESO. NO. COST \$: ACRES:
	SITE DEDICATED	ORD. NO. ACRES:
	GDP CONSULTANT HIRED	RESO. NO. NAME:
	P&R BOARD APPROVAL	PF&R APPROVAL DATE: 11/17/21
	INITIAL DEVELOPMENT	CIP NO. J.O. NO. DRWG. NO.
		CIP NO. J.O. NO. DRWG. NO.
		CIP NO. J.O. NO. DRWG. NO.
		CIP NO. J.O. NO. DRWG. NO.
		CIP NO. J.O. NO. DRWG. NO.
		CIP NO. J.O. NO. DRWG. NO.
		CIP NO. J.O. NO. DRWG. NO.

IMPROVEMENTS SUMMARY (DATA FROM AS-BUILT DRAWINGS)

ITEM	QUANTITY	ITEM	QUANTITY	ITEM	QUANTITY	ITEM	QUANTITY
TOTAL SITE	9.7 AC	AMPHITHEATER	3,290 SF	CONCRETE WALKWAYS	60,590 SF	SECURITY LIGHTS	67
IMPROVED AREA	9.7 AC	NATURE EXPLORATION	3,235 SF	D.G. PAVING	51,165 SF	ENTRY SIGNAGE	3
TURF	1.75 AC	PLAY AREA 2-5, 5-12	8,383 SF	SPORTS SURFACING	12,575 SF	PARK SIGNAGE	4
UNDERSTORY PLANTING	1.87 AC	BIKE RACK	6	RUBBERIZED SURFACE	10,963 SF	TUBE STEEL SWING GATE	1
BUFFER PLANTING	97 AC	BASKETBALL COURT	7,175 SF	ACCESSIBLE CURB RAMP	138 SF	PICNIC TABLES	11
VEGETATIVE BASIN	22,172 SF	PICKLEBALL COURT	5,400 SF	CONCRETE MOW CURB	642 LF	BBQ	5
MULCH AREA	1,420 SF	FITNESS EQUIPMENT	11 PCS	C.I.P. CONCRETE WALL	245 LF	BENCH W/ BACK	42
FIBAR	3,235 SF	SWING SET W/ 4 SWINGS	1	PET WASTE STATION	2	REMOVABLE BOLLARDS	1
TREES	210	PREFAB RESTROOM	132 SF	PERIMETER FENCING	1,884 LF	DRINKING FOUNTAIN	4
DOG PARK	10,080 SF	SHADE CANOPY STRUCTURE	5,603 SF	BOULDERS 3X3, 4X4, 5X5	301	TRASH RECEPTACLES	5 SETS
GARDEN BEDS 5' X 20'	20	COBBLE	921 SF	SEATING BOULDERS	8	REVISION	

CITY OF SAN DIEGO PARK AND RECREATION DEPARTMENT

THE GENERAL DEVELOPMENT PLAN

CHOLLAS TRIANGLE PARK

LAMBERT COORDINATES: 212-1746 THOMAS BROTHERS PAGE: 1270, GRID B5 & B6



PLANTING LEGEND

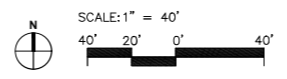
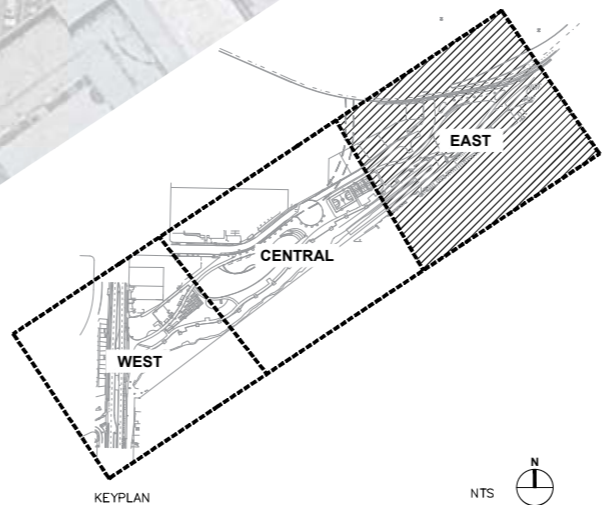
- 40' CANOPY TREE, SUCH AS:**
QUERCUS AGRIFOLIA
ALNUS RHOMBIFOLIA
- 25' CANOPY TREE, SUCH AS:**
PLATANUS RACEMOSA
POPULUS FREMONTII
- STREET TREE, SUCH AS:**
LOPHOSTEMON CONFERTUS
ULMUS PARVIFOLIA
- ACCENT TREE, SUCH AS:**
CERCIS CANADENSIS 'FOREST PANSY'
LAGERSTROEMIA INDICA
PARKINSONIA X 'DESERT MUSEUM'
ARBUTUS 'MARINA'
- SCREENING HEDGE**
PITTOSPORUM TENUIFOLIUM SP.
ACACIA CULTRIFORMIS
DODONAEA VISCOSA
- PARK UNDERSTORY, SUCH AS:**
AGAVE SP.
DASYLIRION WHEELERI
MUHLENBERGIA DUBIA
HESPERALOE PARVIFLORA
SALVIA APIANA
- BUFFER, SUCH AS:**
SALVIA APIANA
ERIOGONUM FASCICULATUM
YUCCA WHIPPLEI
BACCHARIS PILULARIS 'PIGEON POINT'
- BIOSWALE, SUCH AS:**
CAREX SPISSA
FESTUCA RUBRA
LEYMUS CONDENSATUS 'CANYON PRINCE'
ACHILLEA MILLEFOLIUM
JUNCUS PATENS
- TURF, SUCH AS:**
TURF SOD MIX SUCH AS:
GN-1 HYBRID BERMUJA

HARDSCAPE LEGEND

- CONCRETE
- ASPHALT
- TEMPORARY ACCESS
- P.I.P. RUBBERIZED SOFT SURFACING
- SPORTS COURT SURFACING
- DECOMPOSED GRANITE
- BARK MULCH
- FIBAR
- COBBLE
- RIPARIAN BUFFER
- LIMIT OF WORK

IMPROVEMENTS LEGEND

- MULTI-PURPOSE LAWN
- AMPHITHEATER
- 12' CONCRETE PERIMETER PATH
- 12' DECOMPOSED GRANITE MULTI-PURPOSE PATH
- VEGETATIVE STORMWATER BASIN WITH COBBLE AND BOULDERS
- OFF-LEASH DOG AREA FOR LARGE AND SMALL DOGS WITH 4'H PERIMETER FENCE
- COMMUNITY GARDEN WITH 6'H PERIMETER FENCE
- NATURE EXPLORATION AREA WITH LOGS, BOULDERS, STUMPS, INTERPRETIVE SIGNAGE AND FIBAR PLAY SURFACING
- PLAY AREA WITH P.I.P. RUBBERIZED PLAY SURFACING AND SHADE SAIL STRUCTURES
- BASKETBALL COURT WITH 10'H PERIMETER FENCE
- PICKLEBALL COURT WITH 6'H PERIMETER FENCE
- FITNESS AREA WITH P.I.P. RUBBERIZED SURFACING WITH RUNNING TRACK STRIPING AND SIGNAGE
- FITNESS EQUIPMENT STATION
- PRE-FABRICATED ACCESSIBLE COMFORT STATION WITH BOTTLE FILLING STATION AND TRASH AND RECYCLING RECEPTACLES
- METAL SHADE STRUCTURE
- TEMPORARY ACCESS ROAD
- FUTURE LEA ST. EXTENSION
(THE EXTENSION OF LEA STREET IS SHOWN FOR REFERENCE ONLY AND NOT PART OF THE GDP)
- ON-STREET PARKING, MINIMUM 14 SPACES
- SPLIT RAIL FENCE
- INTERPRETIVE SIGNAGE
- MONUMENT SIGN
- PICNIC TABLE
- BOULDER SEATING
- BENCH WITH BACK
- BIKE RAMP
- 12' WIDE VEHICULAR ACCESS GATE
- PAINTED 40YD DASH TRACK ON CONCRETE WITH RUNNING CIRCUIT SIGNAGE AROUND SPORTS COURTS
- BOULDER RETAINING WALL
- CONCRETE SEATWALL
- CONCRETE FLUSH CURB
- BBQ
- PET WASTE STATION
- BIKE RACK
- TUBE STEEL SWING GATE
- BOULDERS
- LOGS
- ACCESSIBLE DRINKING FOUNTAIN
- ACCESSIBLE DRINKING FOUNTAIN WITH DOG BOWL
- TRASH AND RECYCLING RECEPTACLES
- SITE SECURITY LIGHTING
- ROLLED CURB WITH REMOVABLE BOLLARD
- ADA RAMP



SPURLOCK
LANDSCAPE ARCHITECTS
2525 Elmore Road
San Diego, California 92110
619.481.0080
spurlock@spurlock.com

DATE	ACTION	REFERENCE DOCUMENTS
	SITE ACQUIRED	RESO. NO. COST \$: ACRES:
	SITE DEDICATED	ORD. NO. ACRES:
	GDP CONSULTANT HIRED	RESO. NO. NAME:
	P&R BOARD APPROVAL	PF&R APPROVAL DATE: 11/17/21
	INITIAL DEVELOPMENT	CIP NO. J.O. NO. DRWG. NO.
		CIP NO. J.O. NO. DRWG. NO.
		CIP NO. J.O. NO. DRWG. NO.
		CIP NO. J.O. NO. DRWG. NO.
		CIP NO. J.O. NO. DRWG. NO.
		CIP NO. J.O. NO. DRWG. NO.
		CIP NO. J.O. NO. DRWG. NO.

IMPROVEMENTS SUMMARY (DATA FROM AS-BUILT DRAWINGS)							
ITEM	QUANTITY	ITEM	QUANTITY	ITEM	QUANTITY	ITEM	QUANTITY
TOTAL SITE	9.7 AC	AMPHITHEATER	3,290 SF	CONCRETE WALKWAYS	60,590 SF	SECURITY LIGHTS	67
IMPROVED AREA	9.7 AC	NATURE EXPLORATION	3,235 SF	D.G. PAVING	51,165 SF	ENTRY SIGNAGE	3
TURF	1.75 AC	PLAY AREA 2-5, 5-12	8,383 SF	SPORTS SURFACING	12,575 SF	PARK SIGNAGE	4
UNDERSTORY PLANTING	1.87 AC	BIKE RACK	6	RUBBERIZED SURFACE	10,963 SF	TUBE STEEL SWING GATE	1
BUFFER PLANTING	97 AC	BASKETBALL COURT	7,175 SF	ACCESSIBLE CURB RAMP	138 SF	PICNIC TABLES	11
VEGETATIVE BASIN	22,172 SF	PICKLEBALL COURT	5,400 SF	CONCRETE MOW CURB	642 LF	BBQ	5
MULCH AREA	1,420 SF	FITNESS EQUIPMENT	11 PCS	C.I.P. CONCRETE WALL	245 LF	BENCH W/ BACK	42
FIBAR	3,235 SF	SWING SET W/ 4 SWINGS	1	PET WASTE STATION	2	REMOVABLE BOLLARDS	1
TREES	210	PREFAB RESTROOM	132 SF	PERIMETER FENCING	1,884 LF	DRINKING FOUNTAIN	4
DOG PARK	10,080 SF	SHADE CANOPY STRUCTURE	5,603 SF	BOULDERS 3X3, 4X4, 5X5	301	TRASH RECEPTACLES	5 SETS
GARDEN BEDS 5' X 20'	20	COBBLE	921 SF	SEATING BOULDERS	8	REVISION	

CITY OF SAN DIEGO PARK AND RECREATION DEPARTMENT

THE GENERAL DEVELOPMENT PLAN

CHOLLAS TRIANGLE PARK

LAMBERT COORDINATES: 212-1746 THOMAS BROTHERS PAGE: 1270, GRID B5 & B6



THE CITY OF SAN DIEGO
M E M O R A N D U M

DATE: November 15, 2023
TO: Rania Amen, Director, Engineering & Capital Projects Department
FROM: Andy Field, Director, Parks and Recreation Department
SUBJECT: General Development Plan Approvals for Multiple Parks

The Parks and Recreation Board has reviewed and recommended approval of the new or amended General Development Plans for the following parks:

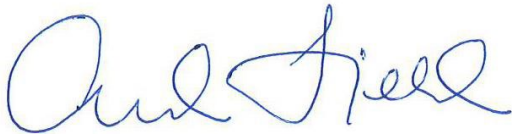
<u>Project Name:</u>	<u>Date Reviewed:</u>
3 Roots Community Park (Bruce Brown Community Park)	November 19, 2020
Allied Gardens Community Park (Dog Off-Leash Area)	April 20, 2023
Balboa Park Natural History Museum Gardens	October 21, 2021
Beyer Community Park	September 17, 2020
Boone Elementary School Joint Use Facility	February 17, 2022
Chollas Triangle Park	November 17, 2022
Eastbourne Neighborhood Park	February 16, 2023
Emerson Elementary School Joint Use Facility	May 19, 2022
Epoca Neighborhood Park	September 15, 2022
Eugene Brucker Education Center (Dog Off-Leash Area)	April 21, 2022
Hidden Trails Neighborhood Park	January 21, 2021
John Baca Neighborhood Park	June 17, 2021
Junipers Neighborhood Park	April 15, 2021
Linda Vista Community Park (Community Garden)	April 21, 2022
Marston Middle School Joint Use Facility	January 20, 2022
Martinez Neighborhood Park	September 15, 2022
Mission Bay High School Joint Use Facility	February 17, 2022
Mission Gorge Park	January 21, 2021
Normal Heights Elementary Joint Use Facility	March 17, 2022
North Park Community Park (Dog Off-Leash Area)	May 19, 2022
Shoal Creek Neighborhood Park	February 16, 2023
Southwest Neighborhood Park (Grove Neighborhood Park)	February 18, 2021

<u>Project Name:</u>	<u>Date Reviewed:</u>
Ward Canyon Neighborhood Park (Dog Off-Leash Area)	June 16, 2022
Whitman Elementary School Joint Use Facility	February 18, 2021
Wilson Middle School Joint Use Facility	January 20, 2022

Based on the recommendations from the Parks and Recreation Board, the Parks and Recreation Department hereby approves all the General Development Plans for the projects listed above.

If you have questions or would like additional information, please reach out to me at afield@sandiego.gov or (619) 235-1110.

Thank you,



Andy Field, Director
Parks and Recreation Department

AF/mg

Attachments: General Development Plans (for listed projects)

cc: Karen Dennison, Assistant Director, Parks and Recreation Department
Tom Tomlinson, Assistant Director, Parks and Recreation Department
Steve Palle, Deputy Director, Parks and Recreation Department
Gina Dulay, Deputy Director, Parks and Recreation Department
Heidi Vonblum, Planning Director, Planning Department
Michelle Abella-Shon, Program Manager, Parks and Recreation Department
Ryan Barbrick, Supervising Management Analyst, Parks and Recreation Department