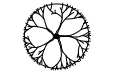

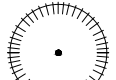




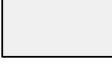





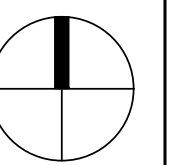
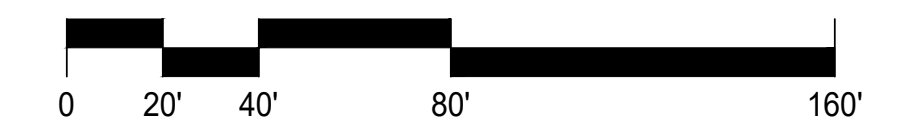
LEGEND:

-  ACCENT TREE
-  SCREENING TREE
-  SHADE TREE
-  RIPARIAN TREE
-  EXISTING TREE TO REMAIN
-  PLANTING AREA
-  CONCRETE PAVING
-  RUBBERIZED SURFACE AREA
-  LOT LINE

ITEMS:

- ① MULTI-PURPOSE TURF AREA
- ② NATIVE PLANTING
- ③ CONCRETE PAVING
- ④ RUBBERIZED SURFACING
- ⑤ PLAY AREA WITH SHADE
- ⑥ COMFORT STATION
- ⑦ BENCHES
- ⑧ PICNIC TABLES
- ⑨ GAME TABLES
- ⑩ CONCRETE PING PONG TABLE
- ⑪ TRASH RECEPTACLES
- ⑫ BBQ UNITS
- ⑬ DRINKING FOUNTAIN
- ⑭ BIKE RACKS
- ⑮ DOG WASTE STATION
- ⑯ ENTRY SIGN
- ⑰ 35' SHADE STRUCTURE
- ⑱ CHAIN LINK FENCING
- ⑲ PEELER LOG FENCING
- ⑳ SECURITY LIGHTING
- ㉑ DUMPSTER ENCLOSURE

SCALE: 1" = 40'



COUNCIL DISTRICT: COMMUNITY PLAN AREA:

DATE	ACTION	RESO. NO.	COST \$:	ACRES:
	SITE ACQUIRED			
	SITE DEDICATED	ORD. NO.		
	GDP CONSULTANT HIRED	RESO. NO.	NAME:	
	P&R BOARD APPROVAL	PF&R APPROVAL	DATE:	
	INITIAL DEVELOPMENT	CIP NO.	J.O. NO.	DRWG. NO.
		CIP NO.	J.O. NO.	DRWG. NO.
		CIP NO.	J.O. NO.	DRWG. NO.
		CIP NO.	J.O. NO.	DRWG. NO.
		CIP NO.	J.O. NO.	DRWG. NO.
		CIP NO.	J.O. NO.	DRWG. NO.
		CIP NO.	J.O. NO.	DRWG. NO.

IMPROVEMENTS SUMMARY (DATA FROM AS-BUILT DRAWINGS)					
ITEM	QUANTITY	ITEM	QUANTITY	ITEM	QUANTITY
TOTAL SITE	2.59 AC.	⑦ BENCHES	8	⑱ CHAIN LINK FENCING	428 LF
TOTAL HARDSCAPE	0.65 AC.	⑧ PICNIC TABLES	23	⑲ PEELER LOG	1,062 LF
TOTAL PLANTING AREA	1.94 AC.	⑨ GAME TABLE	2	⑳ SECURITY LIGHTING	1 LS
TOTAL IMPROVED AREA	2.59 AC.	⑩ CONC. PING PONG TABLE	1	㉑ DUMPSTER ENCLOSURE	1
① TURF	46,949 SF	⑪ TRASH RECEPTACLES	6		
② NATIVE PLANTING	37,897.2 SF	⑫ BBQ UNITS	3		
③ CONC. PAVING	20,993 SF	⑬ DRINKING FOUNTAIN	1		
④ RUBBERIZED SURFACING	7,410 SF	⑭ BIKE RACKS	2		
⑤ PLAY AREA WITH SHADE	1	⑮ DOG WASTE STATION	3		
⑥ COMFORT STATION	1	⑯ ENTRY SIGN	1		
		⑰ 36' SQ SHADE SHELTER	1		
				REVISION	

CITY OF SAN DIEGO PARK AND RECREATION DEPARTMENT

THE GENERAL DEVELOPMENT PLAN
EASTBOURNE
NEIGHBORHOOD PARK

LAMBERT COORDINATES: THOMAS BROTHERS PAGE: PSD (PSD #)



ACCENT TREES



CERCIDIUM FLORIDUM
"BLUE PALO VERDE"



CERCIS OCCIDENTALIS
"WESTERN REDBUD"

SCREENING TREES



SAMBUCUS MEXICANA
"BLUE ELDERBERRY"



PRUNUS LYONII
"CATALINA CHERRY"

SHADE TREES



CALOCEDRUS DECURRENS
"INCENSE CEDAR"



PLATANUS RACEMOSA
"CALIFORNIA SYCAMORE"



QUERCUS KELLOGGII
"CALIFORNIA BLACK OAK"



QUERCUS AGRIFOLIA
"COAST LIVE OAK"

RIPARIAN TREES



PRUNUS ILICIFOLIA
"HOLLYLEAF CHERRY"



SAMBUCUS MEXICANA
"BLUE ELDERBERRY"

NATURALIZED AREAS



ARTEMESIA CALIFORNICA
"CALIFORNIA SAGEBRUSH"



COMAROSTAPHYLIS DIVERSIFOLIA
"SUMMER HOLLY"



ENCELIA FARINOSA
"BRITTLEBUSH"



ERIOGONUM PARVIFOLIUM
"COASTAL BUCKWHEAT"



HETEROMELES ARBUTIFOLIA
"TOYON"



LUPINUS BICOLOR
"MINIATURE LUPINE"



QUERCUS DUMOSA
"NUTTALL'S SCRUB OAK"



RHAMNUS CALIFORNICA
"COFFEEBERRY"



RHUS OVATA
"SUGAR BUSH"



SALVIA APIANA
"WHITE SAGE"

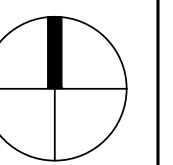
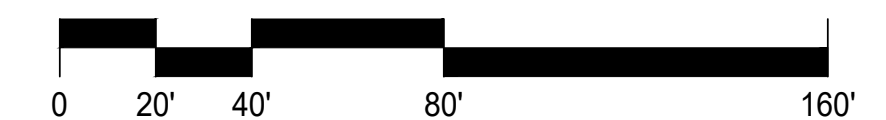


YUCCA WHIPPLEI
"FOOTHILL YUCCA"

PLANTING LEGEND:

SYMBOL	BOTANICAL NAME	COMMON NAME
ACCENT TREES (MATURE SIZE: 5' - 50' HEIGHT, 5' - 40' SPREAD)		
	CERCIDIUM FLORIDUM	BLUE PALO VERDE
	CERCIS OCCIDENTALIS	WESTERN REDBUD
SCREENING TREES (MATURE SIZE: 15' - 80' HEIGHT, 10' - 35' SPREAD)		
	SAMBUCUS MEXICANA	BLUE ELDERBERRY
	PRUNUS LYONII	CATALINA CHERRY
SHADE TREES (MATURE SIZE: 20' - 80' HEIGHT, 20' - 100' SPREAD)		
	CALOCEDRUS DECURRENS	INCENSE CEDAR
	PLATANUS RACEMOSA	CALIFORNIA SYCAMORE
	QUERCUS KELLOGGII	CALIFORNIA BLACK OAK
	QUERCUS AGRIFOLIA	COAST LIVE OAK
RIPARIAN TREES (MATURE SIZE: 20' - 45' HEIGHT, 15' - 20' SPREAD)		
	PRUNUS ILICIFOLIA	HOLLYLEAF CHERRY
	SAMBUCUS MEXICANA	BLUE ELDERBERRY
NATURALIZED AREAS		
	ARTEMESIA CALIFORNICA	CALIFORNIA SAGEBRUSH
	COMAROSTAPHYLIS DIVERSIFOLIA	SUMMER HOLLY
	DIVERSIFOLIA	BRITTLEBUSH
	ENCELIA FARINOSA	COASTAL BUCKWHEAT
	ERIOGONUM PARVIFOLIUM	TOYON
	HETEROMELES ARBUTIFOLIA	SUCCULENT LUPINE
	LUPINUS SUCCULENTUS	NUTTALL'S SCRUB OAK
	QUERCUS DUMOSA	COFFEEBERRY
	RHAMNUS CALIFORNICA	SUGAR BUSH
	RHUS OVATA	WHITE SAGE
	SALVIA APIANA	FOOTHILL YUCCA
	YUCCA WHIPPLEI	

SCALE: 1" = 40'



COUNCIL DISTRICT: COMMUNITY PLAN AREA:

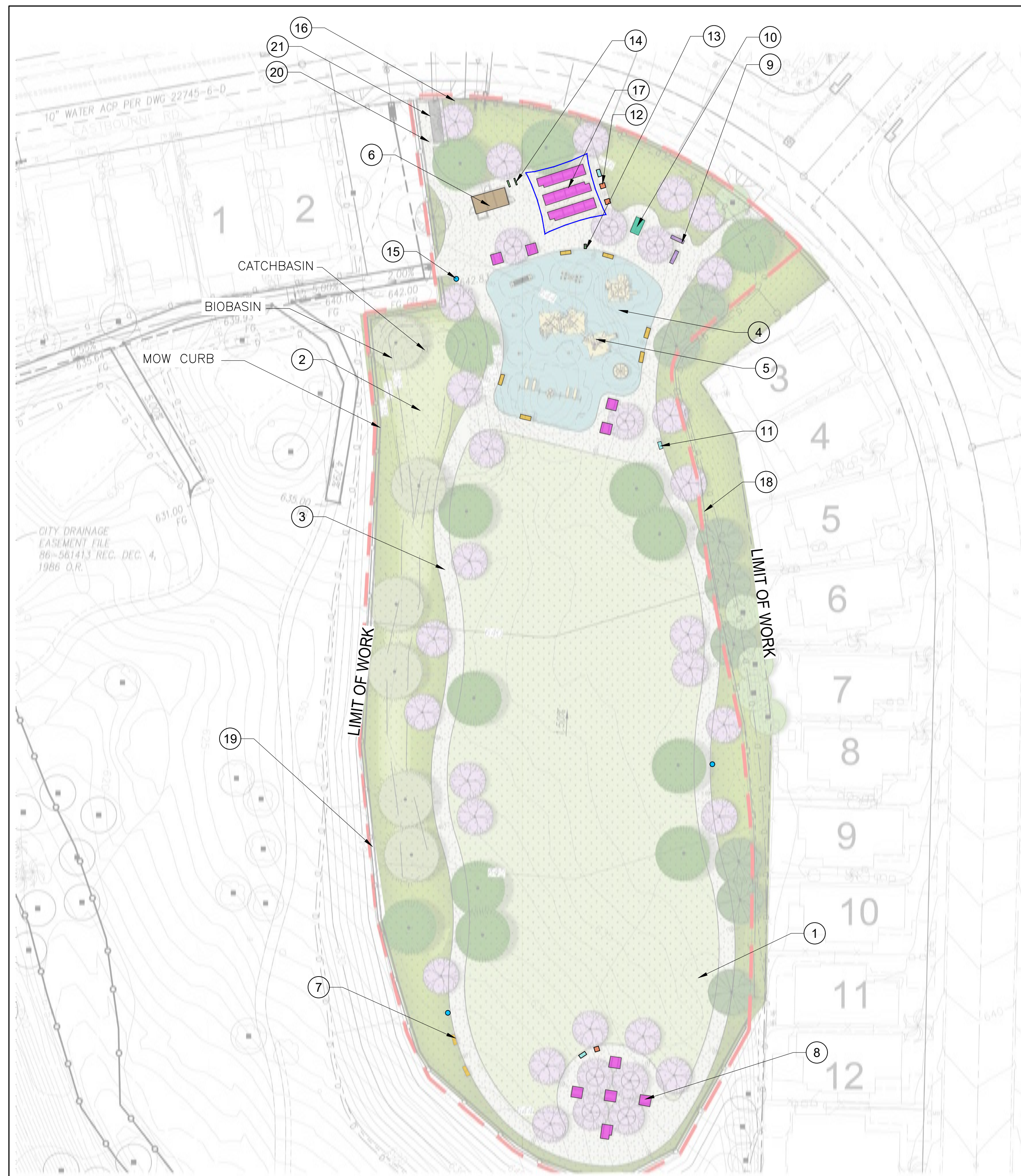
DATE	ACTION	REFERENCE DOCUMENTS	COST \$:	ACRES:
	SITE ACQUIRED	RESO. NO.		
	SITE DEDICATED	ORD. NO.		
	GDP CONSULTANT HIRED	RESO. NO.	NAME:	
	P&R BOARD APPROVAL	PF&R APPROVAL	DATE:	
	INITIAL DEVELOPMENT	CIP NO.	J.O. NO.	DRWG. NO.
		CIP NO.	J.O. NO.	DRWG. NO.
		CIP NO.	J.O. NO.	DRWG. NO.
		CIP NO.	J.O. NO.	DRWG. NO.
		CIP NO.	J.O. NO.	DRWG. NO.
		CIP NO.	J.O. NO.	DRWG. NO.
		CIP NO.	J.O. NO.	DRWG. NO.

IMPROVEMENTS SUMMARY (DATA FROM AS-BUILT DRAWINGS)			
ITEM	QUANTITY	ITEM	QUANTITY
TOTAL SITE	2.59 AC.	7 BENCHES	8
TOTAL HARDSCAPE	0.65 AC.	8 PICNIC TABLES	23
TOTAL PLANTING AREA	1.94 AC.	9 GAME TABLE	2
IMPROVED AREA	2.59 AC.	10 CONC. PING PONG TABLE	1
1 TURF	46,949 SF	11 TRASH RECEPTACLES	6
2 NATIVE PLANTING	37,897.2 SF	12 BBQ UNITS	3
3 CONC. PAVING	20,993 SF	13 DRINKING FOUNTAIN	1
4 RUBBERIZED SURFACING	7,410 SF	14 BIKE RACKS	2
5 PLAY AREA WITH SHADE	1	15 DOG WASTE STATION	3
6 COMFORT STATION	1	16 ENTRY SIGN	1
		17 36' SQ SHADE SHELTER	1
		18 CHAIN LINK FENCING	428 LF
		19 PEELER LOG	1,062 LF
		20 SECURITY LIGHTING	1 LS
		21 DUMPSTER ENCLOSURE	1
		REVISION	

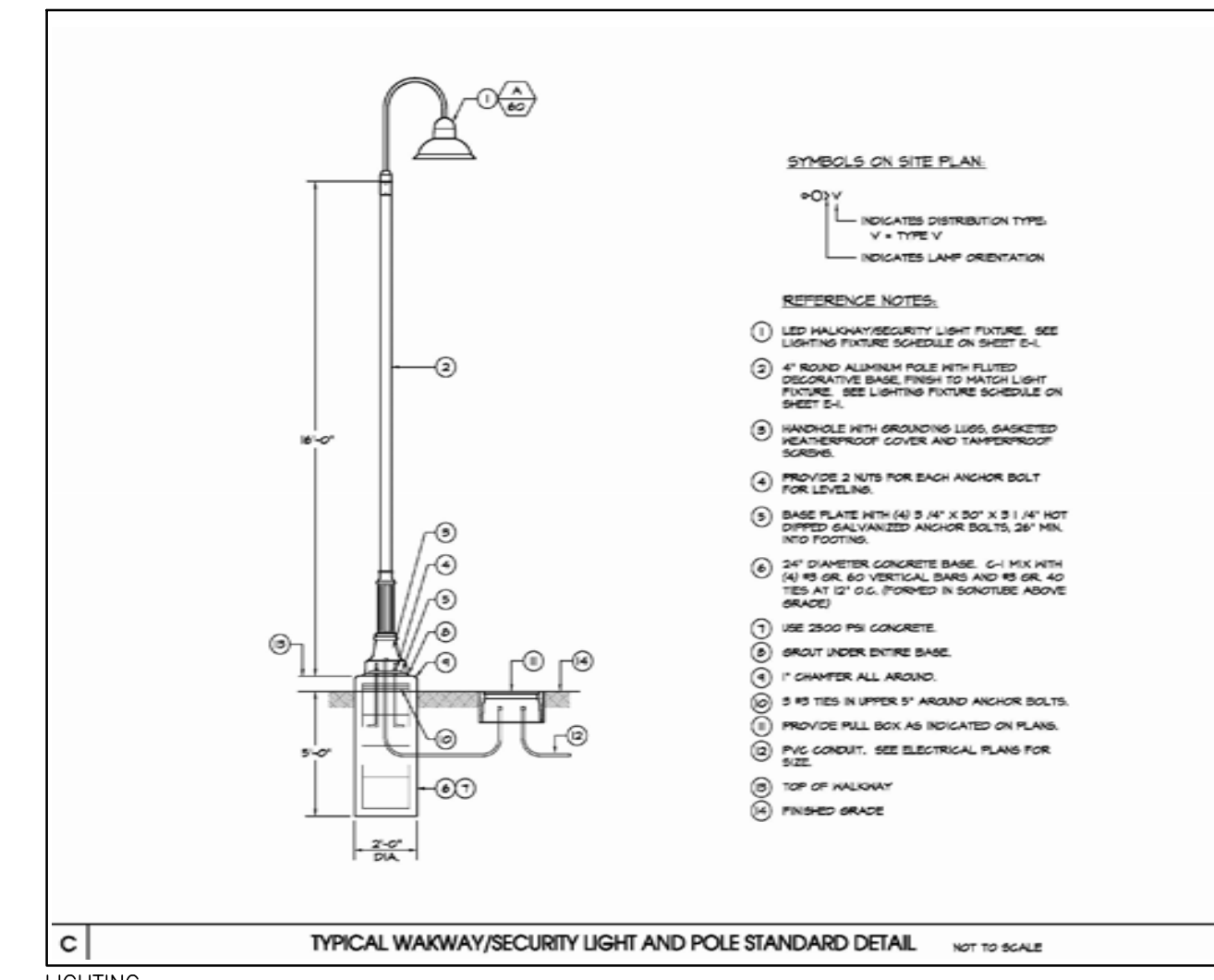
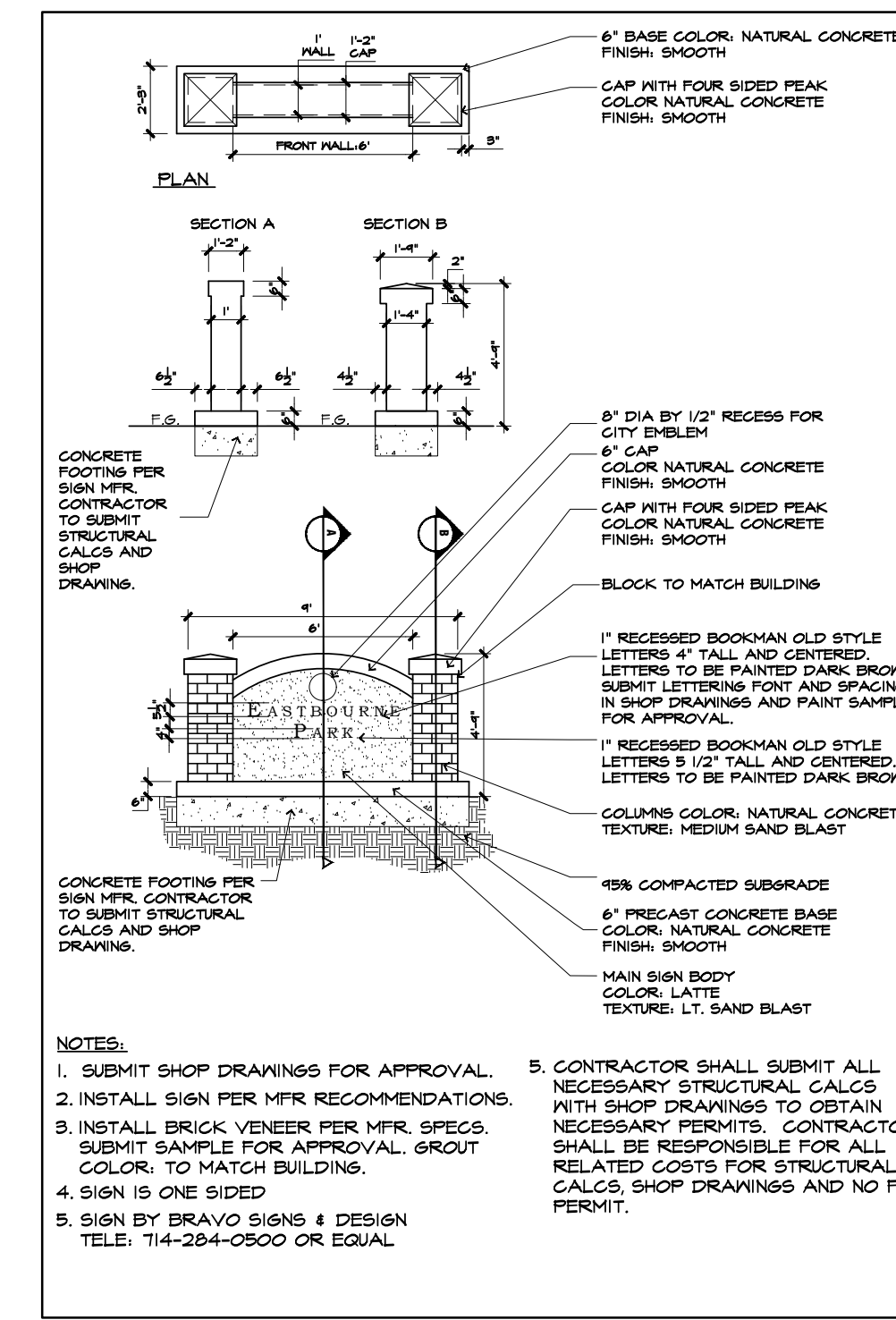
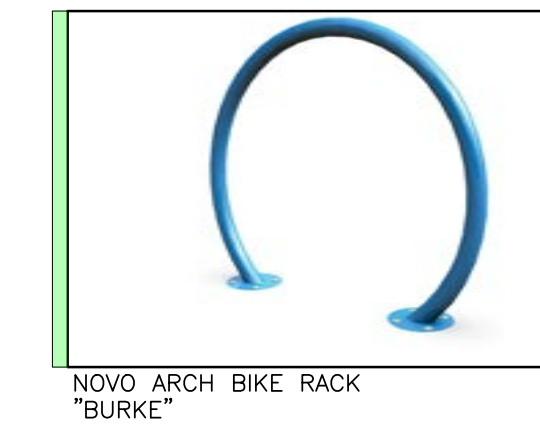
CITY OF SAN DIEGO PARK AND RECREATION DEPARTMENT

THE GENERAL DEVELOPMENT PLAN
EASTBOURNE
NEIGHBORHOOD PARK

LAMBERT COORDINATES: THOMAS BROTHERS PAGE: PSD (PSD #)



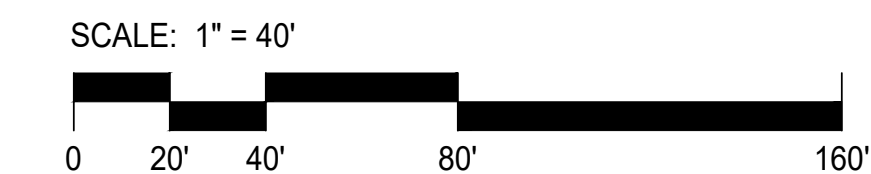
SITE FURNISHINGS AND AMENITIES



COUNCIL DISTRICT: COMMUNITY PLAN AREA:

DATE	ACTION	RESO. NO.	J.O. NO.	DRWG. NO.
	SITE ACQUIRED			
	SITE DEDICATED			
	GDP CONSULTANT HIRED			
	P&R BOARD APPROVAL			
	INITIAL DEVELOPMENT			

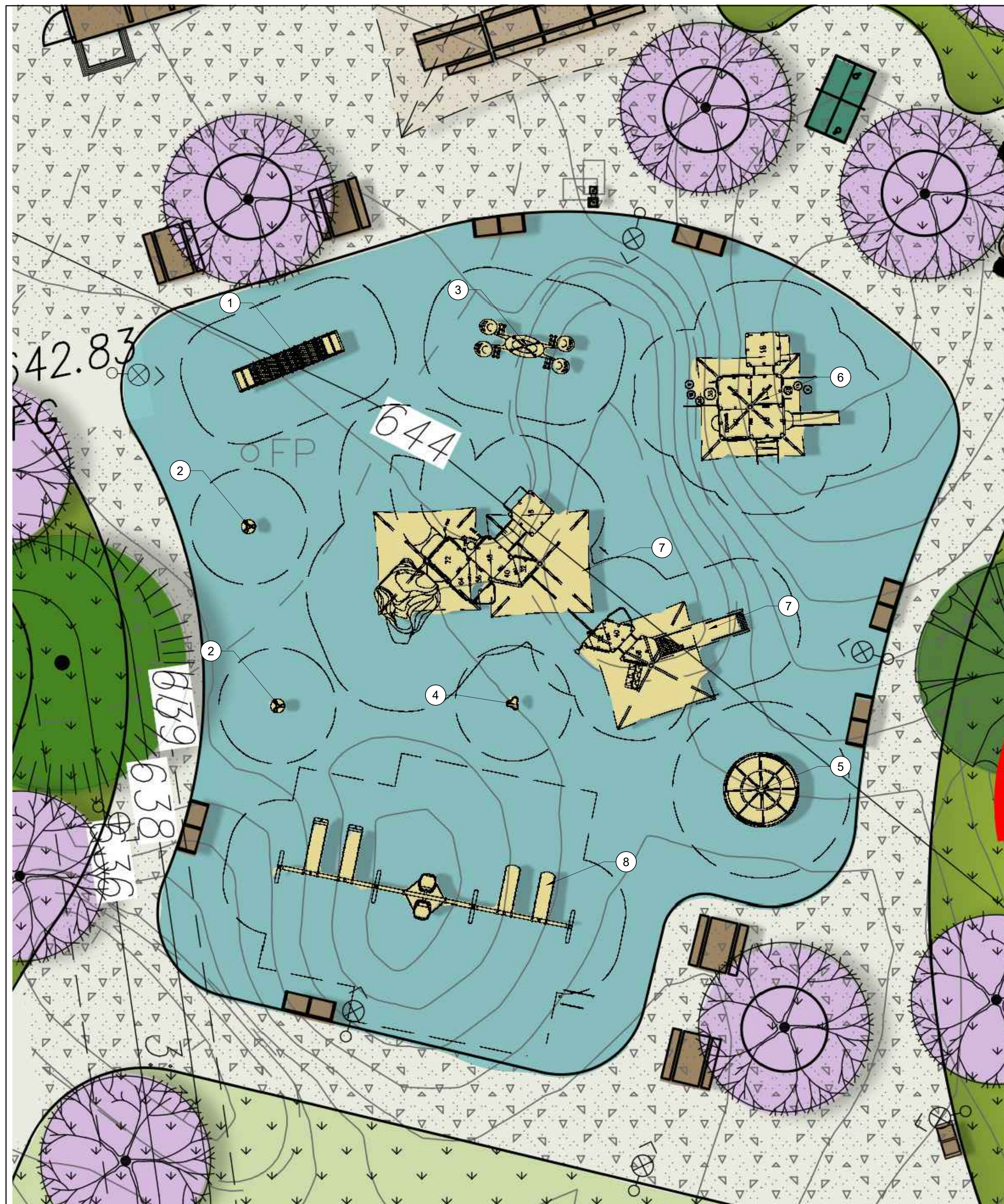
IMPROVEMENTS SUMMARY (DATA FROM AS-BUILT DRAWINGS)					
ITEM	QUANTITY	ITEM	QUANTITY	ITEM	QUANTITY
TOTAL SITE	2.59 AC.	7 BENCHES	8	18 CHAIN LINK FENCING	428 LF
TOTAL HARDSCAPE	0.65 AC.	8 PICNIC TABLES	23	19 PEELER LOG	1,062 LF
TOTAL PLANTING AREA	1.94 AC.	9 GAME TABLE	2	20 SECURITY LIGHTING	1 LS
IMPROVED AREA	2.59 AC.	10 CONC. PING PONG TABLE	1	21 DUMPSTER ENCLOSURE	1
1 TURF	46,949 SF	11 TRASH RECEPTACLES	6		
2 NATIVE PLANTING	37,897.2 SF	12 BBQ UNITS	3		
3 CONC. PAVING	20,993 SF	13 DRINKING FOUNTAIN	1		
4 RUBBERIZED SURFACING	7,410 SF	14 BIKE RACKS	2		
5 PLAY AREA WITH SHADE	1	15 DOG WASTE STATION	3		
6 COMFORT STATION	1	16 ENTRY SIGN	1		
		17 36' SQ SHADE SHELTER	1		



CITY OF SAN DIEGO PARK AND RECREATION DEPARTMENT

THE GENERAL DEVELOPMENT PLAN
EASTBOURNE
NEIGHBORHOOD PARK

LAMBERT COORDINATES: THOMAS BROTHERS PAGE: PSD (PSD #)



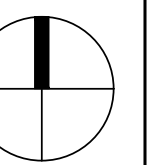
PLAY STRUCTURE



"LANDSCAPE STRUCTURES"

- ① 176457 - ROLLER TABLE
- ② 247179 - CURVA SPINNER DB ONLY
- ③ 186490 - WE - SAW
- ④ 152179 - SADDLE SPINNER 16" SEAT HEIGHT
- ⑤ 249558 - WE-GO-AROUND W/ NATURE DIGFUSE PANELS 2 SEAT DB ONLY
- ⑥ PLAYBOOSTER (2-5 YEAR) MAX FALL HEIGHT: 54 INCH
- ⑦ PLAYBOOSTER (5-12 YEAR) MAX FALL HEIGHT: 96 INCH
- ⑧ SWIGS WITH:
 - 1. 176038 - FULL BUCKET SEAT W/PROGUARD CHAINS 8" BEAM HEIGHT
 - 2. 221293 - 5" ARCH SWING ADDITIONAL BAY
 - 3. 237294 - FRIENDSHIP SWING W/ 5" ARCH FRAME ADDITIONAL BAY PROGUARD CHAINS
 - 4. 221292 - 5" ARCH SWING
 - 5. 174018 BELT SEAT W/PROGUARD CHAINS 8" BEAM HEIGHT

SCALE: 1/8" = 1'-0"



COUNCIL DISTRICT: COMMUNITY PLAN AREA:

DATE	ACTION	RESO. NO.	COST \$:	ACRES:	REFERENCE DOCUMENTS
	SITE ACQUIRED				
	SITE DEDICATED				
	GDP CONSULTANT HIRED				
	P&R BOARD APPROVAL				
	INITIAL DEVELOPMENT				

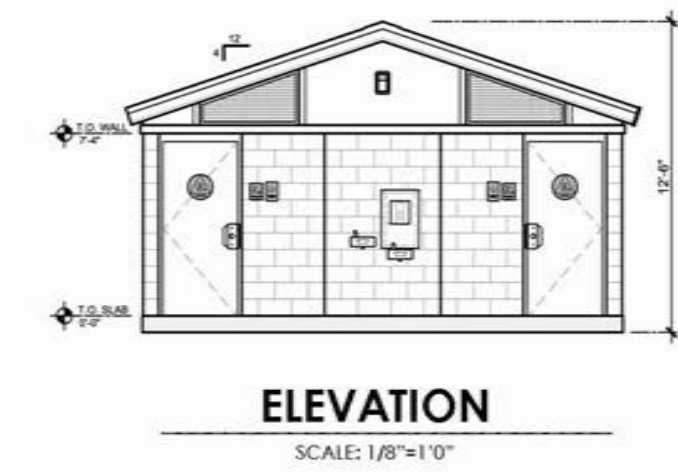
IMPROVEMENTS SUMMARY (DATA FROM AS-BUILT DRAWINGS)					
ITEM	QUANTITY	ITEM	QUANTITY	ITEM	QUANTITY
TOTAL SITE	2.59 AC.	⑦ BENCHES	8	⑱ CHAIN LINK FENCING	428 LF
TOTAL HARDSCAPE	0.65 AC.	⑧ PICNIC TABLES	23	⑲ PEELER LOG	1,062 LF
TOTAL PLANTING AREA	1.94 AC.	⑨ GAME TABLE	2	⑳ SECURITY LIGHTING	1 LS
IMPROVED AREA	2.59 AC.	⑩ CONC. PING PONG TABLE	1	㉑ DUMPSTER ENCLOSURE	1
① TURF	46,949 SF	⑪ TRASH RECEPTACLES	6		
② NATIVE PLANTING	37,897.2 SF	⑫ BBQ UNITS	3		
③ CONC. PAVING	20,993 SF	⑬ DRINKING FOUNTAIN	1		
④ RUBBERIZED SURFACING	7,410 SF	⑭ BIKE RACKS	2		
⑤ PLAY AREA WITH SHADE	1	⑮ DOG WASTE STATION	3		
⑥ COMFORT STATION	1	⑯ ENTRY SIGN	1		
		⑰ 36' SQ SHADE SHELTER	1		
				REVISION	

CITY OF SAN DIEGO PARK AND RECREATION DEPARTMENT

THE GENERAL DEVELOPMENT PLAN
EASTBOURNE
 NEIGHBORHOOD PARK

LAMBERT COORDINATES: THOMAS BROTHERS PAGE: **PSD #**

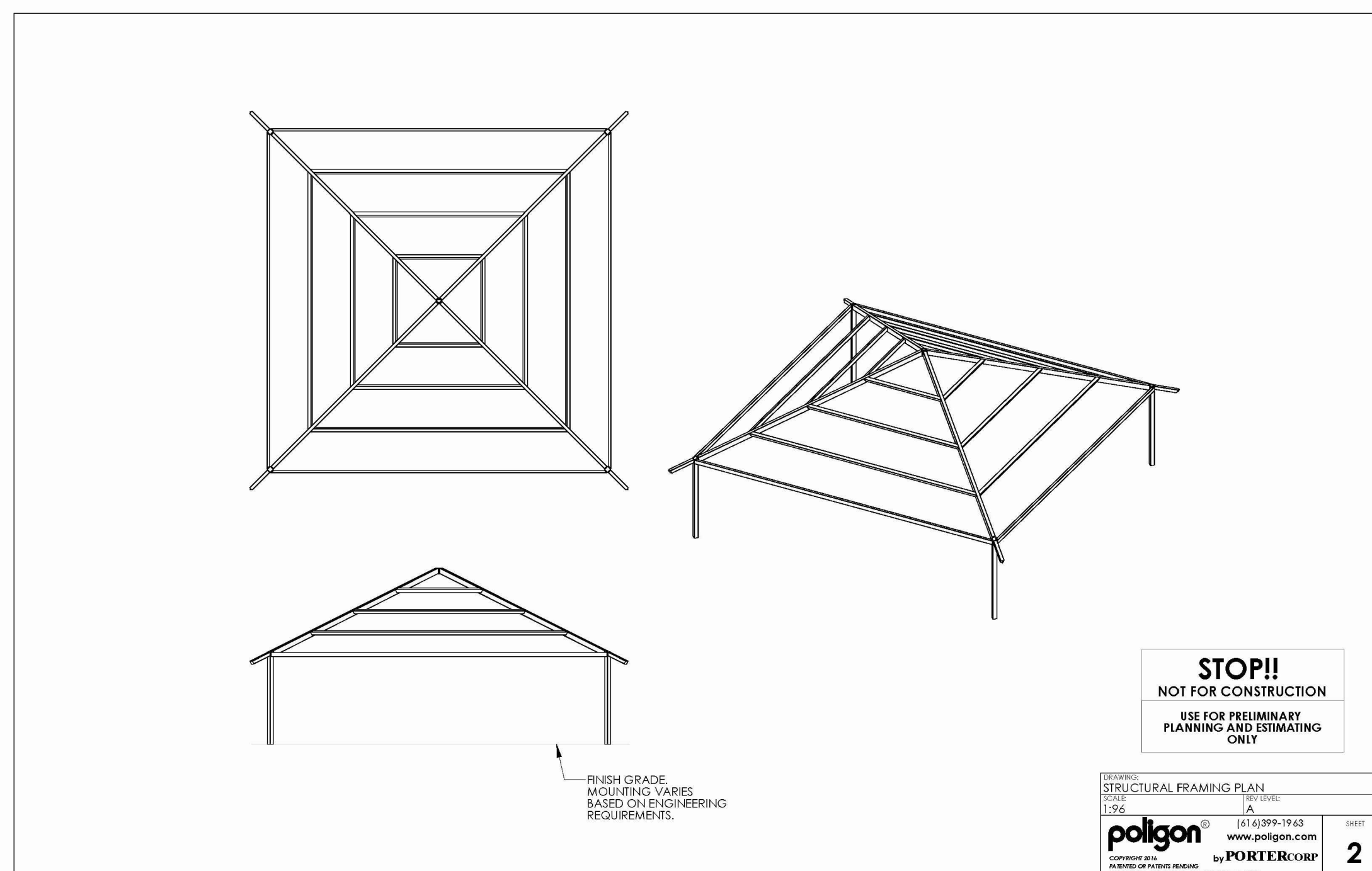
BUILDING PLANS AND ELEVATIONS



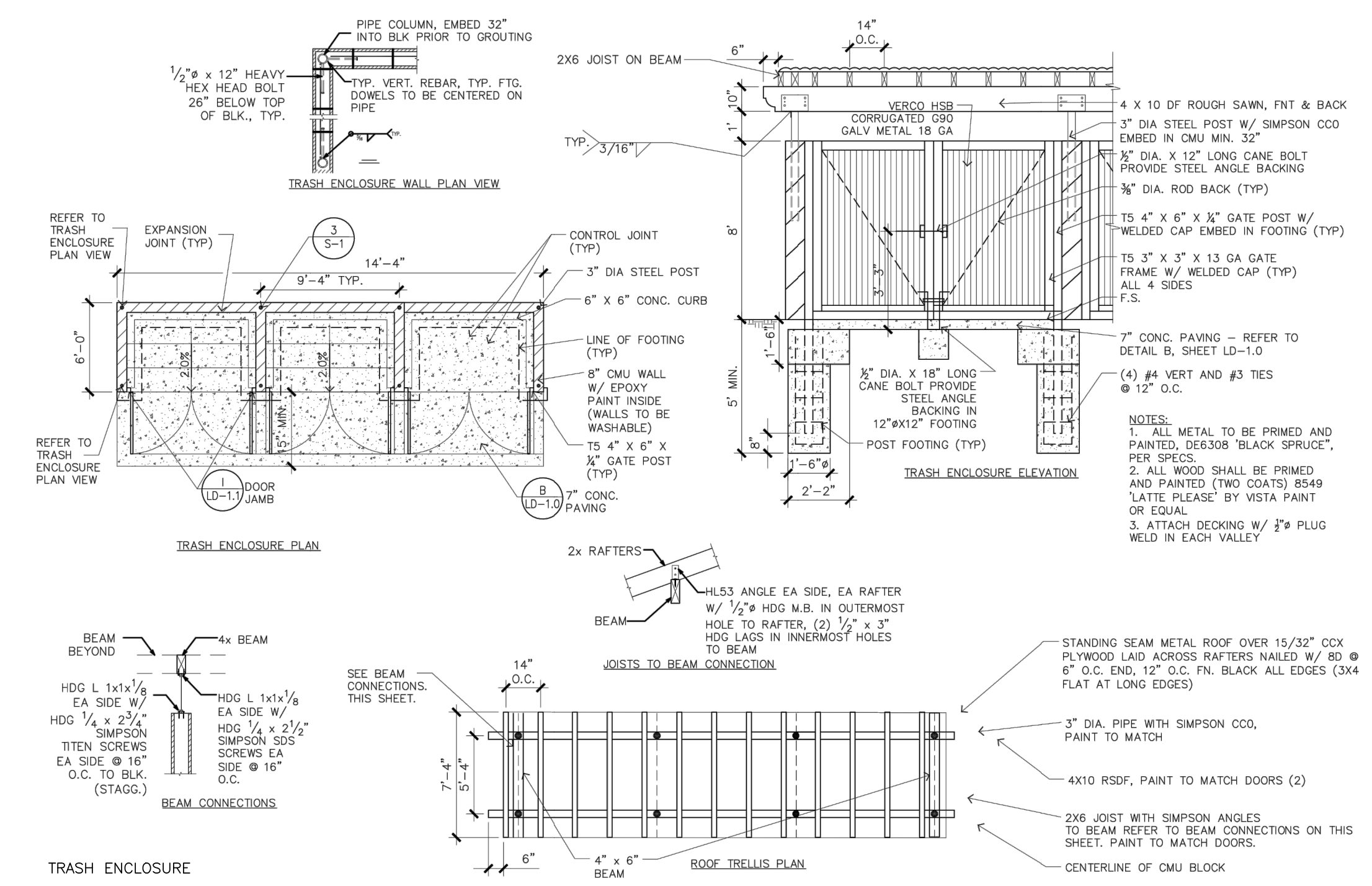
PERSPECTIVE
(FINISHES SUBJECT TO CHANGE)

RESTROOM BUILDING
PS-022DF
PLAYGROUND SERIES
90 USERS/HR
PUBLIC RESTROOM COMPANY

PS-022DF PLAYGROUND SERIES RESTROOM
PUBLIC RESTROOM COMPANY



SQR 36 SQUARE SHADE STRUCTURE
POLIGON, BROWN ROOF



DATE	ACTION	REFERENCE DOCUMENTS	COST \$:	ACRES:
	SITE ACQUIRED	RESO. NO.		
	SITE DEDICATED	ORD. NO.		
	GDP CONSULTANT HIRED	RESO. NO.	NAME:	
	P&R BOARD APPROVAL	PF&R APPROVAL	DATE:	
	INITIAL DEVELOPMENT	CIP NO.	J.O. NO.	DRWG. NO.
		CIP NO.	J.O. NO.	DRWG. NO.
		CIP NO.	J.O. NO.	DRWG. NO.
		CIP NO.	J.O. NO.	DRWG. NO.
		CIP NO.	J.O. NO.	DRWG. NO.
		CIP NO.	J.O. NO.	DRWG. NO.

IMPROVEMENTS SUMMARY (DATA FROM AS-BUILT DRAWINGS)					
ITEM	QUANTITY	ITEM	QUANTITY	ITEM	QUANTITY
TOTAL SITE	2.59 AC.	7 BENCHES	8	18 CHAIN LINK FENCING	428 LF
TOTAL HARDSCAPE	0.65 AC.	8 PICNIC TABLES	23	19 PEELER LOG	1,062 LF
TOTAL PLANTING AREA	1.94 AC	9 GAME TABLE	2	20 SECURITY LIGHTING	1 LS
IMPROVED AREA	2.59 AC.	10 CONC. PING PONG TABLE	1	21 DUMPSTER ENCLOSURE	1
1 TURF	46,949 SF	11 TRASH RECEPTACLES	6		
2 NATIVE PLANTING	37,897.2 SF	12 BBQ UNITS			
3 CONC. PAVING	20,993 SF	13 DRINKING FOUNTAIN	1		
4 RUBBERIZED SURFACING	7,410 SF	14 BIKE RACKS	2		
5 PLAY AREA WITH SHADE	1	15 DOG WASTE STATION	3		
6 COMFORT STATION	1	16 ENTRY SIGN	1		
		17 36' SQ SHADE SHELTER	1		
				REVISION	

CITY OF SAN DIEGO PARK AND RECREATION DEPARTMENT

THE GENERAL DEVELOPMENT PLAN

EASTBOURNE

NEIGHBORHOOD PARK

PSD
(PSD #)

LAMBERT COORDINATES: _____ THOMAS BROTHERS PAGE: _____



THE CITY OF SAN DIEGO
M E M O R A N D U M

DATE: November 15, 2023
TO: Rania Amen, Director, Engineering & Capital Projects Department
FROM: Andy Field, Director, Parks and Recreation Department
SUBJECT: General Development Plan Approvals for Multiple Parks

The Parks and Recreation Board has reviewed and recommended approval of the new or amended General Development Plans for the following parks:

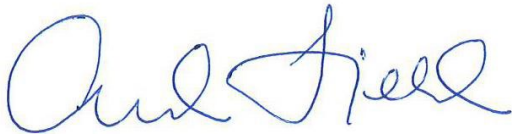
<u>Project Name:</u>	<u>Date Reviewed:</u>
3 Roots Community Park (Bruce Brown Community Park)	November 19, 2020
Allied Gardens Community Park (Dog Off-Leash Area)	April 20, 2023
Balboa Park Natural History Museum Gardens	October 21, 2021
Beyer Community Park	September 17, 2020
Boone Elementary School Joint Use Facility	February 17, 2022
Chollas Triangle Park	November 17, 2022
Eastbourne Neighborhood Park	February 16, 2023
Emerson Elementary School Joint Use Facility	May 19, 2022
Epoca Neighborhood Park	September 15, 2022
Eugene Brucker Education Center (Dog Off-Leash Area)	April 21, 2022
Hidden Trails Neighborhood Park	January 21, 2021
John Baca Neighborhood Park	June 17, 2021
Junipers Neighborhood Park	April 15, 2021
Linda Vista Community Park (Community Garden)	April 21, 2022
Marston Middle School Joint Use Facility	January 20, 2022
Martinez Neighborhood Park	September 15, 2022
Mission Bay High School Joint Use Facility	February 17, 2022
Mission Gorge Park	January 21, 2021
Normal Heights Elementary Joint Use Facility	March 17, 2022
North Park Community Park (Dog Off-Leash Area)	May 19, 2022
Shoal Creek Neighborhood Park	February 16, 2023
Southwest Neighborhood Park (Grove Neighborhood Park)	February 18, 2021

<u>Project Name:</u>	<u>Date Reviewed:</u>
Ward Canyon Neighborhood Park (Dog Off-Leash Area)	June 16, 2022
Whitman Elementary School Joint Use Facility	February 18, 2021
Wilson Middle School Joint Use Facility	January 20, 2022

Based on the recommendations from the Parks and Recreation Board, the Parks and Recreation Department hereby approves all the General Development Plans for the projects listed above.

If you have questions or would like additional information, please reach out to me at afield@sandiego.gov or (619) 235-1110.

Thank you,



Andy Field, Director
Parks and Recreation Department

AF/mg

Attachments: General Development Plans (for listed projects)

cc: Karen Dennison, Assistant Director, Parks and Recreation Department
Tom Tomlinson, Assistant Director, Parks and Recreation Department
Steve Palle, Deputy Director, Parks and Recreation Department
Gina Dulay, Deputy Director, Parks and Recreation Department
Heidi Vonblum, Planning Director, Planning Department
Michelle Abella-Shon, Program Manager, Parks and Recreation Department
Ryan Barbrick, Supervising Management Analyst, Parks and Recreation Department