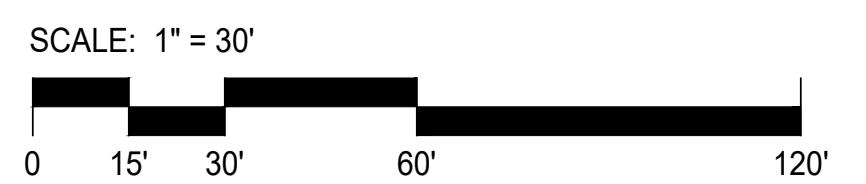




- LEGEND:**
- ACCENT TREE
  - SCREENING TREE
  - SHADE TREE
  - RIPARIAN TREE
  - EXISTING TREE TO REMAIN
  - PLANTING AREA
  - CONCRETE PAVING
  - RUBBERIZED SURFACE AREA
  - LOT LINE

- ITEMS:**
- ① TURF
  - ② NATIVE PLANTING
  - ③ CONCRETE PAVING
  - ④ RUBBERIZED SURFACING
  - ⑤ PLAY AREA WITH SHADE
  - ⑥ BENCHES
  - ⑦ PICNIC TABLES
  - ⑧ TRASH RECEPTACLES
  - ⑨ BBQ UNITS
  - ⑩ DRINKING FOUNTAIN
  - ⑪ BIKE RACKS
  - ⑫ DOG WASTE STATION
  - ⑬ ENTRY SIGN
  - ⑭ SHADE STRUCTURE
  - ⑮ SECURITY LIGHTING

OPTION 1



DATE	ACTION	REFERENCE DOCUMENTS	COST \$:	ACRES:
	SITE ACQUIRED	RESO. NO.		
	SITE DEDICATED	ORD. NO.		
	GDP CONSULTANT HIRED	RESO. NO.	NAME:	
	P&R BOARD APPROVAL	PF&R APPROVAL	DATE:	
	INITIAL DEVELOPMENT	CIP NO.	J.O. NO.	DRWG. NO.
		CIP NO.	J.O. NO.	DRWG. NO.
		CIP NO.	J.O. NO.	DRWG. NO.
		CIP NO.	J.O. NO.	DRWG. NO.
		CIP NO.	J.O. NO.	DRWG. NO.
		CIP NO.	J.O. NO.	DRWG. NO.

IMPROVEMENTS SUMMARY (DATA FROM AS-BUILT DRAWINGS)					
ITEM	QUANTITY	ITEM	QUANTITY	ITEM	QUANTITY
TOTAL SITE	1.9 AC.	⑥ BENCHES	6	⑮ SECURITY LIGHTING	13
TOTAL HARDSCAPE	0.48 AC.	⑦ PICNIC TABLES	15		
TOTAL PLANTING AREA	1.42 AC.	⑧ TRASH RECEPTACLES	3		
IMPROVED AREA	1.9 AC.	⑨ BBQ UNITS	2		
① TURF	25,886 SF	⑩ DRINKING FOUNTAIN	1		
② NATIVE PLANTING	36,154 SF	⑪ BIKE RACKS	2		
③ CONC. PAVING	13,107 SF	⑫ DOG WASTE STATION	2		
④ RUBBERIZED SURFACING	7,925 SF	⑬ ENTRY SIGN	1		
⑤ PLAY AREA WITH SHADE	1	⑭ SHADE SHELTER	1		
				REVISION	

CITY OF SAN DIEGO PARK AND RECREATION DEPARTMENT

THE GENERAL DEVELOPMENT PLAN

# WALDEN

NEIGHBORHOOD PARK

PSD  
(PSD #)

LAMBERT COORDINATES: \_\_\_\_\_ THOMAS BROTHERS PAGE: \_\_\_\_\_



**LEGEND:**

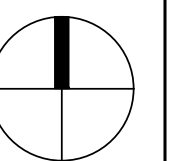
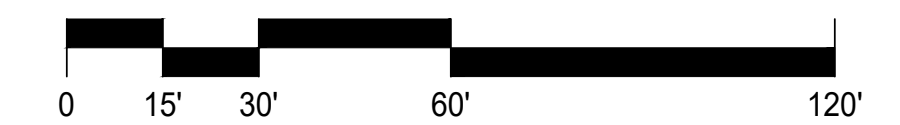
- ACCENT TREE
- SCREENING TREE
- SHADE TREE
- RIPARIAN TREE
- EXISTING TREE TO REMAIN
- PLANTING AREA
- CONCRETE PAVING
- RUBBERIZED SURFACE AREA
- LOT LINE

**ITEMS:**

- ① TURF
- ② NATIVE PLANTING
- ③ CONCRETE PAVING
- ④ RUBBERIZED SURFACING
- ⑤ PLAY AREA WITH SHADE
- ⑥ BENCHES
- ⑦ PICNIC TABLES
- ⑧ TRASH RECEPTACLES
- ⑨ BBQ UNITS
- ⑩ DRINKING FOUNTAIN
- ⑪ BIKE RACKS
- ⑫ DOG WASTE STATION
- ⑬ ENTRY SIGN
- ⑭ SHADE STRUCTURE
- ⑮ SECURITY LIGHTING

OPTION 2

SCALE: 1" = 30'



DATE	ACTION	REFERENCE DOCUMENTS	COST \$:	ACRES:
	SITE ACQUIRED	RESO. NO.		
	SITE DEDICATED	ORD. NO.		
	GDP CONSULTANT HIRED	RESO. NO.	NAME:	
	P&R BOARD APPROVAL	PF&R APPROVAL	DATE:	
	INITIAL DEVELOPMENT	CIP NO.	J.O. NO.	DRWG. NO.
		CIP NO.	J.O. NO.	DRWG. NO.
		CIP NO.	J.O. NO.	DRWG. NO.
		CIP NO.	J.O. NO.	DRWG. NO.
		CIP NO.	J.O. NO.	DRWG. NO.
		CIP NO.	J.O. NO.	DRWG. NO.

IMPROVEMENTS SUMMARY (DATA FROM AS-BUILT DRAWINGS)					
ITEM	QUANTITY	ITEM	QUANTITY	ITEM	QUANTITY
TOTAL SITE	1.9 AC.	⑥ BENCHES	6	⑮ SECURITY LIGHTING	13
TOTAL HARDSCAPE	0.48 AC.	⑦ PICNIC TABLES	15		
TOTAL PLANTING AREA	1.42 AC.	⑧ TRASH RECEPTACLES	3		
IMPROVED AREA	1.9 AC.	⑨ BBQ UNITS	2		
① TURF	25,886 SF	⑩ DRINKING FOUNTAIN	1		
② NATIVE PLANTING	36,154 SF	⑪ BIKE RACKS	2		
③ CONC. PAVING	13,107 SF	⑫ DOG WASTE STATION	2		
④ RUBBERIZED SURFACING	7,925 SF	⑬ ENTRY SIGN	1		
⑤ PLAY AREA WITH SHADE	1	⑭ SHADE SHELTER	1		
				REVISION	

CITY OF SAN DIEGO PARK AND RECREATION DEPARTMENT

THE GENERAL DEVELOPMENT PLAN

# WALDEN

NEIGHBORHOOD PARK

PSD  
(PSD #)

LAMBERT COORDINATES: \_\_\_\_\_ THOMAS BROTHERS PAGE: \_\_\_\_\_



**ACCENT TREES**



CERCIDIUM FLORIDUM  
"BLUE PALO VERDE"



CERCIS OCCIDENTALIS  
"WESTERN REDBUD"

**SCREENING TREES**



SAMBUCUS MEXICANA  
"BLUE ELDERBERRY"



PRUNUS LYONII  
"CATALINA CHERRY"

**SHADE TREES**



CALOCEDRUS DECURRENS  
"INCENSE CEDAR"



PLATANUS RACEMOSA  
"CALIFORNIA SYCAMORE"



QUERCUS KELLOGGII  
"CALIFORNIA BLACK OAK"

**RIPARIAN TREES**



QUERCUS AGRIFOLIA  
"COAST LIVE OAK"



PRUNUS ILICIFOLIA  
"HOLLYLEAF CHERRY"



SAMBUCUS MEXICANA  
"BLUE ELDERBERRY"

**NATURALIZED AREAS**



ARTEMISIA CALIFORNICA  
"CALIFORNIA SAGEBRUSH"



COMAROSTAPHYLIS DIVERSIFOLIA  
"SUMMER HOLLY"



ENCELIA FARINOSA  
"BRITTLEBUSH"



ERIOGONUM PARVIFOLIUM  
"COASTAL BUCKWHEAT"



HETEROMELES ARBUTIFOLIA  
"TOYON"



LUPINUS BICOLOR  
"MINIATURE LUPINE"



QUERCUS DUMOSA  
"NUTTALL'S SCRUB OAK"



RHAMNUS CALIFORNICA  
"COFFEEBERRY"



RHUS OVATA  
"SUGAR BUSH"



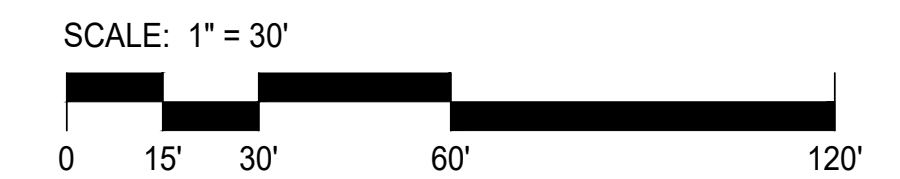
SALVIA APIANA  
"WHITE SAGE"



YUCCA WHIPPLEI  
"FOOTHILL YUCCA"

**PLANTING LEGEND:**

SYMBOL	BOTANICAL NAME	COMMON NAME
<b>ACCENT TREES (MATURE SIZE: 5' - 50' HEIGHT, 5' - 40' SPREAD)</b>		
	CERCIDIUM FLORIDUM	BLUE PALO VERDE
	CERCIS OCCIDENTALIS	WESTERN REDBUD
<b>SCREENING TREES (MATURE SIZE: 15' - 80' HEIGHT, 10' - 35' SPREAD)</b>		
	SAMBUCUS MEXICANA	BLUE ELDERBERRY
	PRUNUS LYONII	CATALINA CHERRY
<b>SHADE TREES (MATURE SIZE: 20' - 80' HEIGHT, 20' - 100' SPREAD)</b>		
	CALOCEDRUS DECURRENS	INCENSE CEDAR
	PLATANUS RACEMOSA	CALIFORNIA SYCAMORE
	QUERCUS KELLOGGII	CALIFORNIA BLACK OAK
	QUERCUS AGRIFOLIA	COAST LIVE OAK
<b>RIPARIAN TREES (MATURE SIZE: 20' - 45' HEIGHT, 15' - 20' SPREAD)</b>		
	PRUNUS ILICIFOLIA	HOLLYLEAF CHERRY
	SAMBUCUS MEXICANA	BLUE ELDERBERRY
<b>NATURALIZED AREAS</b>		
	ARTEMISIA CALIFORNICA	CALIFORNIA SAGEBRUSH
	COMAROSTAPHYLIS DIVERSIFOLIA	SUMMER HOLLY
	ENCELIA FARINOSA	BRITTLEBUSH
	ERIOGONUM PARVIFOLIUM	COASTAL BUCKWHEAT
	HETEROMELES ARBUTIFOLIA	TOYON
	LUPINUS SUCCULENTUS	SUCCULENT LUPINE
	QUERCUS DUMOSA	NUTTALL'S SCRUB OAK
	RHAMNUS CALIFORNICA	COFFEEBERRY
	RHUS OVATA	SUGAR BUSH
	SALVIA APIANA	WHITE SAGE
	YUCCA WHIPPLEI	FOOTHILL YUCCA



DATE	ACTION	REFERENCE DOCUMENTS
	SITE ACQUIRED	RESO. NO. COST \$: ACRES:
	SITE DEDICATED	ORD. NO. ACRES:
	GDP CONSULTANT HIRED	RESO. NO. NAME:
	P&R BOARD APPROVAL	PF&R APPROVAL DATE:
	INITIAL DEVELOPMENT	CIP NO. J.O. NO. DRWG. NO.

IMPROVEMENTS SUMMARY (DATA FROM AS-BUILT DRAWINGS)					
ITEM	QUANTITY	ITEM	QUANTITY	ITEM	QUANTITY
TOTAL SITE	1.9 AC.	6 BENCHES	6	15 SECURITY LIGHTING	13
TOTAL HARDSCAPE	0.48 AC.	7 PICNIC TABLES	15	15 GAL. TREES	10
TOTAL PLANTING AREA	1.42 AC.	8 TRASH RECEPTACLES	3	24" BOX TREES	20
IMPROVED AREA	1.9 AC.	9 BBQ UNITS	2		
1 TURF	25,886 SF	10 DRINKING FOUNTAIN	1		
2 NATIVE PLANTING	36,154 SF	11 BIKE RACKS	2		
3 CONC. PAVING	13,107 SF	12 DOG WASTE STATION	2		
4 RUBBERIZED SURFACING	7,925 SF	13 ENTRY SIGN	1		
5 PLAY AREA WITH SHADE	1	14 SHADE SHELTER	1		
				REVISION	

CITY OF SAN DIEGO PARK AND RECREATION DEPARTMENT

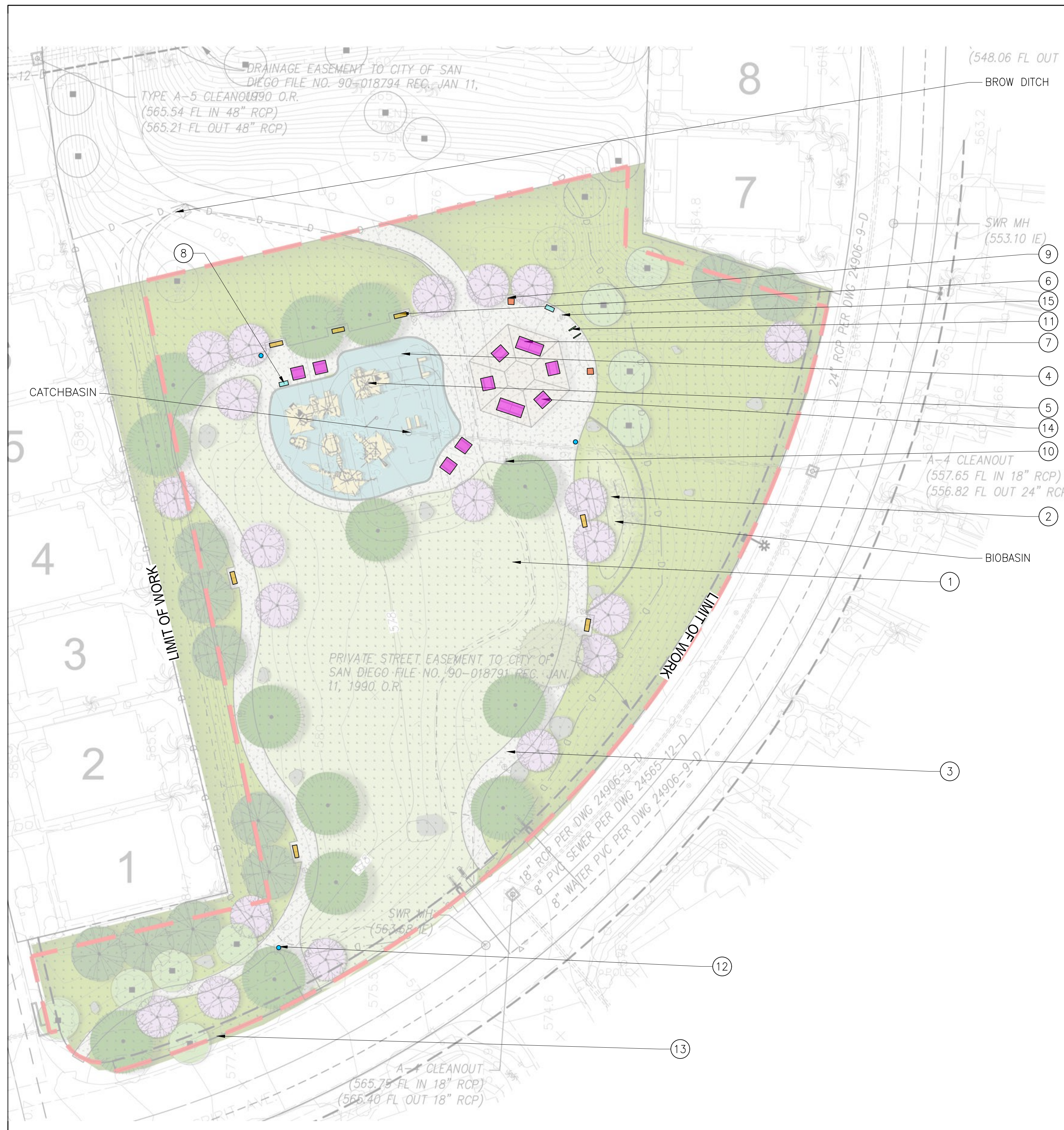
THE GENERAL DEVELOPMENT PLAN

# WALDEN

NEIGHBORHOOD PARK

PSD  
(PSD #)

LAMBERT COORDINATES: THOMAS BROTHERS PAGE:



**SITE FURNISHINGS AND AMENITIES**



420 -BLOCK LEG BENCH  
"OUTDOOR CREATIONS INC."



6' PICNIC TABLE WITH ROUND LEGS & 92" PICNIC TABLE WITH ROUND LEGS  
"OUTDOOR CREATIONS INC."



MODEL 3500D WATER FOUNTAIN  
"HAWK"



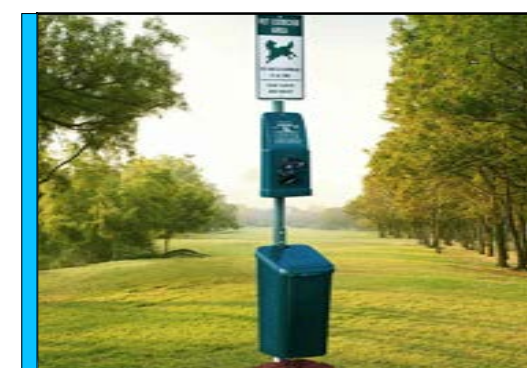
511 -WASTE AND RECYCLING RECEPTACLE  
"OUTDOOR CREATIONS INC."



300A -FAMILY BBQ WITH 113 -PEDESTAL TABLE  
"OUTDOOR CREATIONS INC."



NOVO ARCH BIKE RACK  
"BURKE"



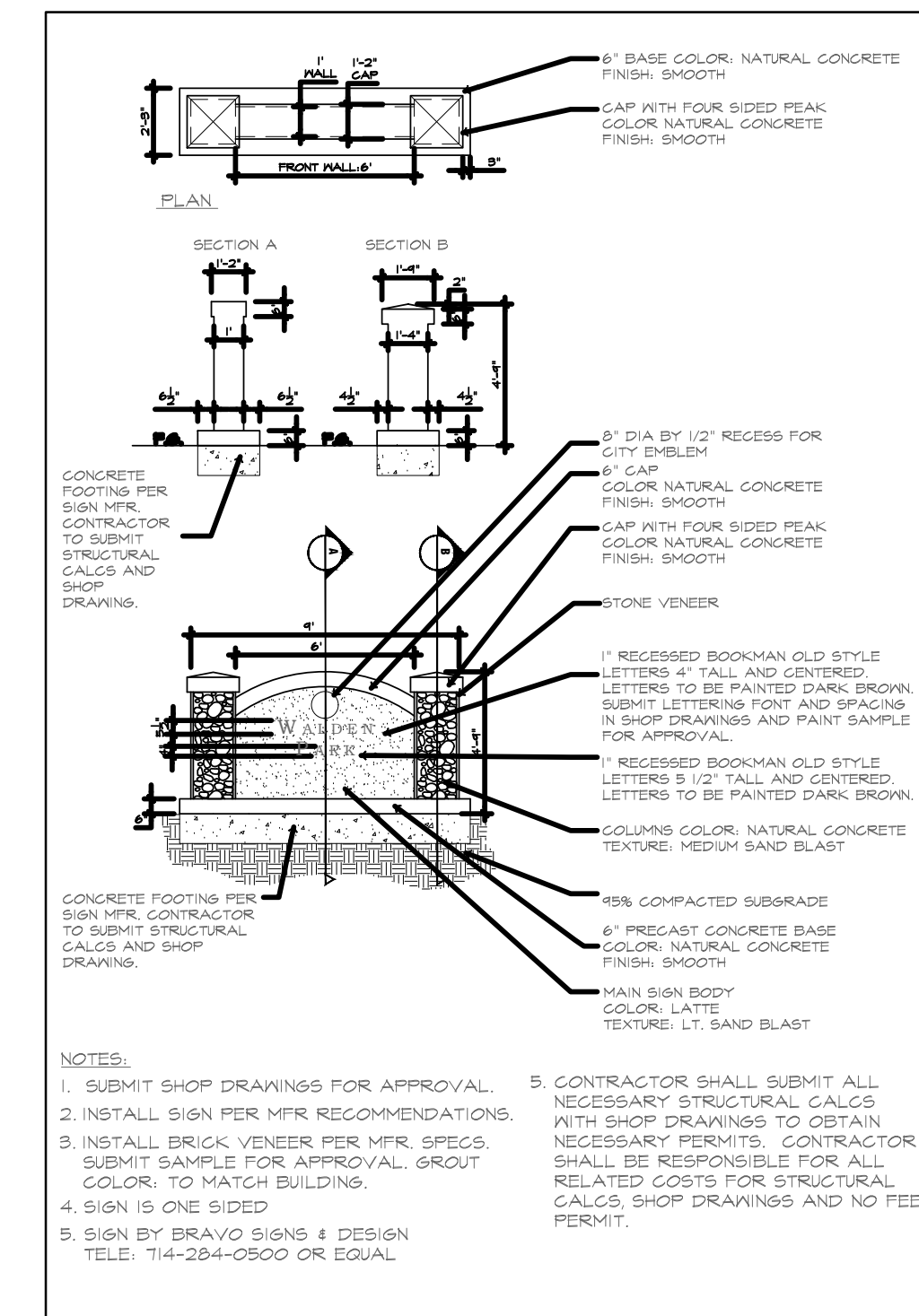
PET WASTE STATION



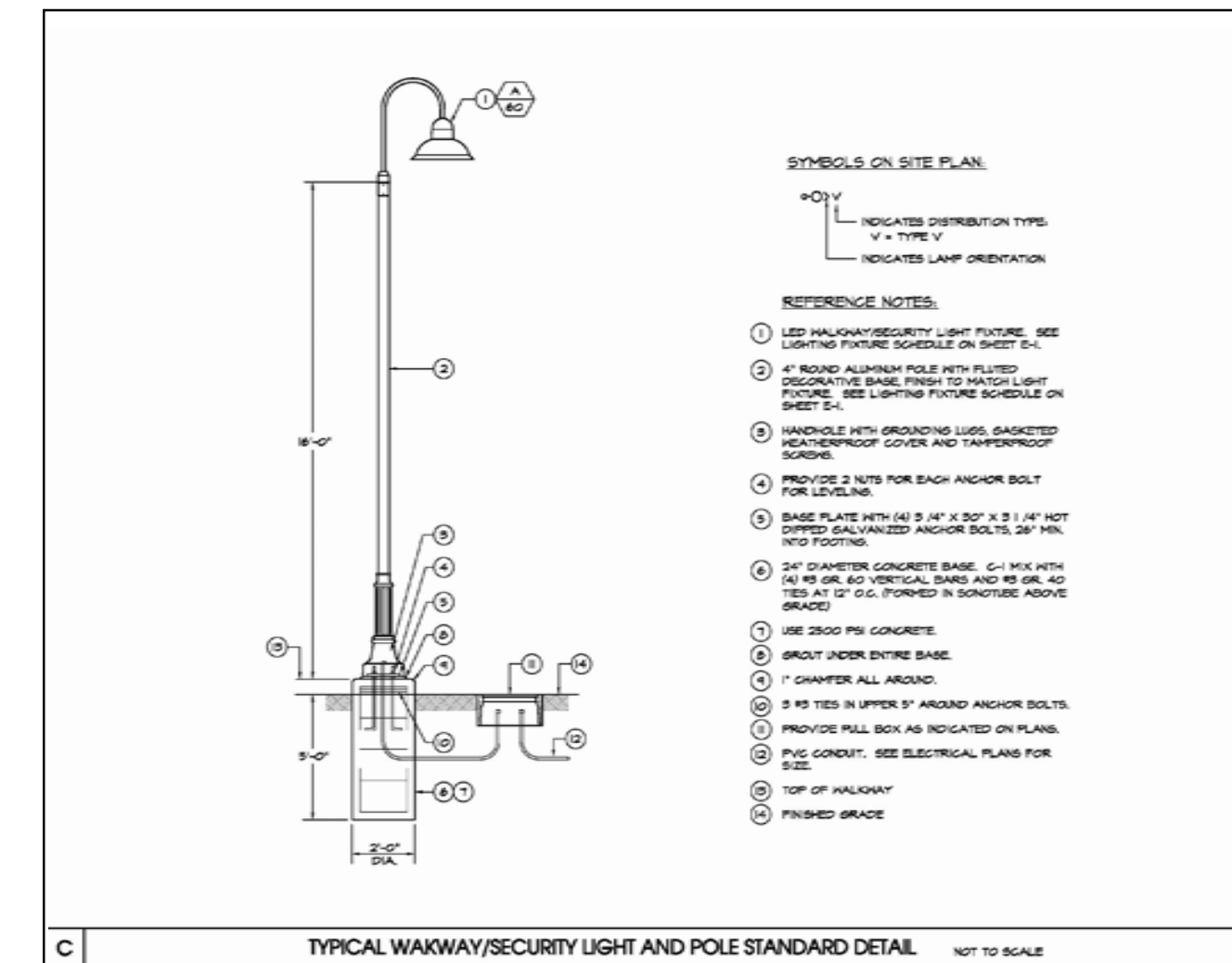
HEX 48 SHADE STRUCTURE  
"POLIGNO"



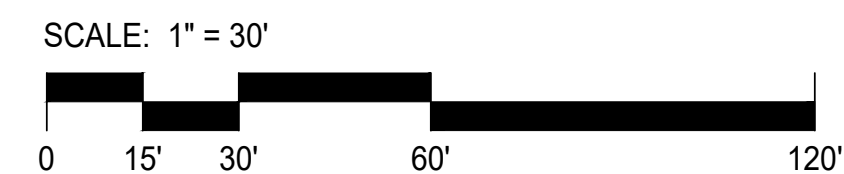
3' PEELER LOG FENCE



CUSTOM DESIGN ENTRY SIGN



TYPICAL WALKWAY/SECURITY LIGHT AND POLE STANDARD DETAIL



DATE	ACTION	REFERENCE DOCUMENTS	COST \$:	ACRES:
	SITE ACQUIRED	RESO. NO.		
	SITE DEDICATED	ORD. NO.		
	GDP CONSULTANT HIRED	RESO. NO.	NAME:	
	P&R BOARD APPROVAL	PF&R APPROVAL	DATE:	
	INITIAL DEVELOPMENT	CIP NO.	J.O. NO.	DRWG. NO.
		CIP NO.	J.O. NO.	DRWG. NO.
		CIP NO.	J.O. NO.	DRWG. NO.
		CIP NO.	J.O. NO.	DRWG. NO.
		CIP NO.	J.O. NO.	DRWG. NO.
		CIP NO.	J.O. NO.	DRWG. NO.
		CIP NO.	J.O. NO.	DRWG. NO.

IMPROVEMENTS SUMMARY (DATA FROM AS-BUILT DRAWINGS)					
ITEM	QUANTITY	ITEM	QUANTITY	ITEM	QUANTITY
TOTAL SITE	1.9 AC.	6 BENCHES	6	15 SECURITY LIGHTING	13
TOTAL HARDSCAPE	0.48 AC.	7 PICNIC TABLES	15	15 GAL. TREES	10
TOTAL PLANTING AREA	1.42 AC.	8 TRASH RECEPTACLES	3	24" BOX TREES	20
IMPROVED AREA	1.9 AC.	9 BBQ UNITS	2		
1 TURF	25,886 SF	10 DRINKING FOUNTAIN	1		
2 NATIVE PLANTING	36,154 SF	11 BIKE RACKS	2		
3 CONC. PAVING	13,107 SF	12 DOG WASTE STATION	2		
4 RUBBERIZED SURFACING	7,925 SF	13 ENTRY SIGN	1		
5 PLAY AREA WITH SHADE	1	14 SHADE SHELTER	1		
				REVISION	

CITY OF SAN DIEGO PARK AND RECREATION DEPARTMENT

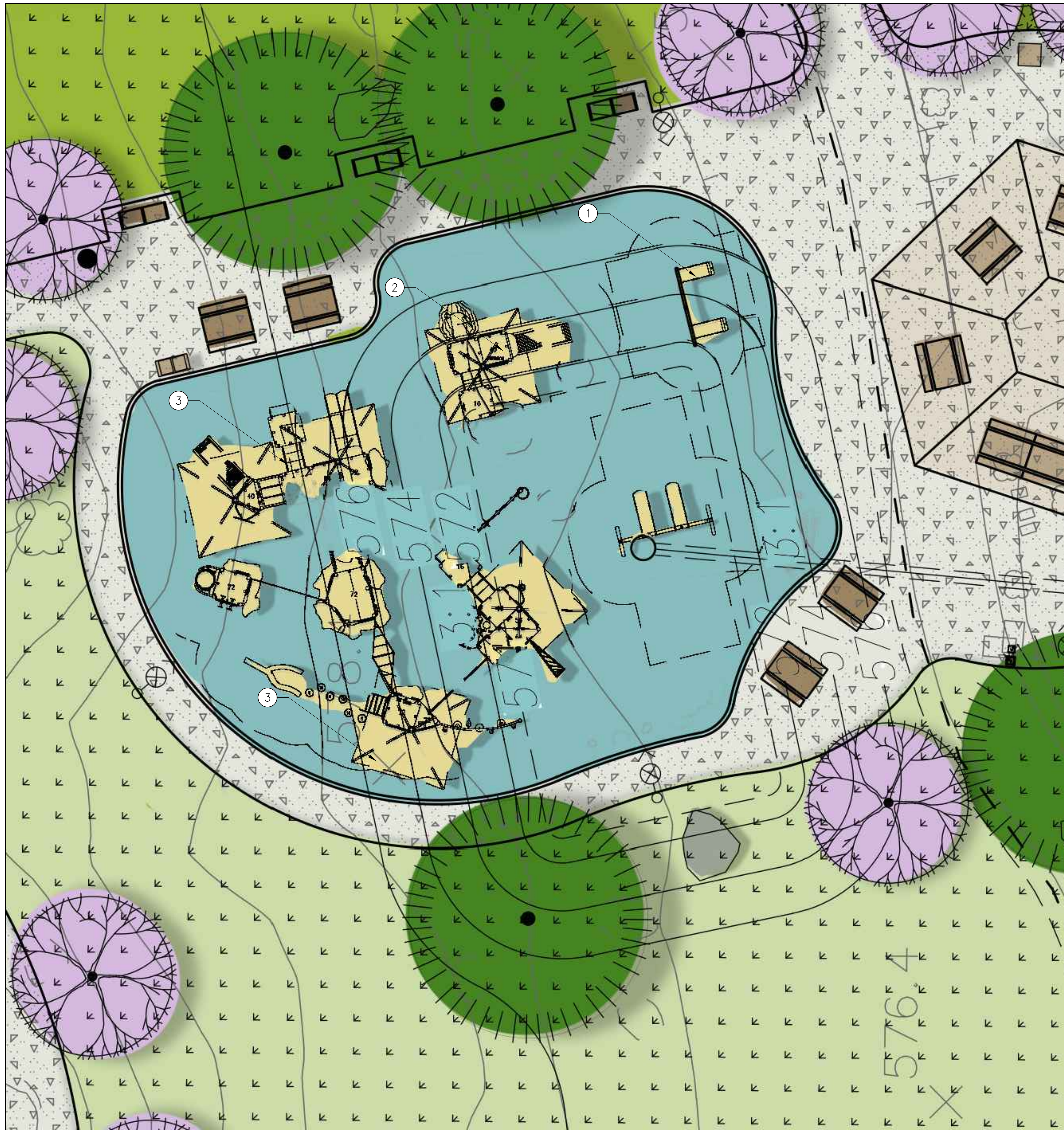
THE GENERAL DEVELOPMENT PLAN

# WALDEN

NEIGHBORHOOD PARK

PSD  
(PSD #)

LAMBERT COORDINATES: \_\_\_\_\_ THOMAS BROTHERS PAGE: \_\_\_\_\_



PLAY STRUCTURE



"LANDSCAPE STRUCTURES"

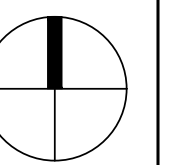
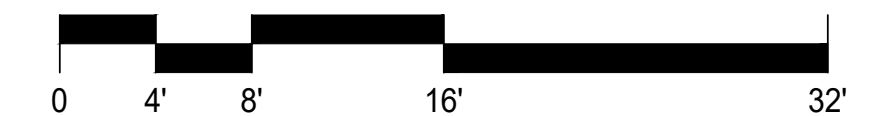
- ① 177336 - TODDLER SWING DB ONLY
- ② PLAYBOOSTER (2-5 YEAR) MAX FALL HEIGHT: 79 INCH
- ③ PLAYBOOSTER (5-12 YEAR) MAX FALL HEIGHT: 96 INCH

COUNCIL DISTRICT: COMMUNITY PLAN AREA:

DATE	ACTION	RESO. NO.	COST \$:	ACRES:	REFERENCE DOCUMENTS
	SITE ACQUIRED	RESO. NO.			
	SITE DEDICATED	ORD. NO.			
	GDP CONSULTANT HIRED	RESO. NO.	NAME:		
	P&R BOARD APPROVAL	PF&R APPROVAL	DATE:		
	INITIAL DEVELOPMENT	CIP NO.	J.O. NO.	DRWG. NO.	
		CIP NO.	J.O. NO.	DRWG. NO.	
		CIP NO.	J.O. NO.	DRWG. NO.	
		CIP NO.	J.O. NO.	DRWG. NO.	
		CIP NO.	J.O. NO.	DRWG. NO.	
		CIP NO.	J.O. NO.	DRWG. NO.	

IMPROVEMENTS SUMMARY (DATA FROM AS-BUILT DRAWINGS)					
ITEM	QUANTITY	ITEM	QUANTITY	ITEM	QUANTITY
TOTAL SITE	1.9 AC.	⑥ BENCHES	6	⑮ SECURITY LIGHTING	13
TOTAL HARDSCAPE	0.48 AC.	⑦ PICNIC TABLES	15	15 GAL. TREES	10
TOTAL PLANTING AREA	1.42 AC.	⑧ TRASH RECEPTACLES	3	24" BOX TREES	20
IMPROVED AREA	1.9 AC.	⑨ BBQ UNITS	2		
① TURF	25,886 SF	⑩ DRINKING FOUNTAIN	1		
② NATIVE PLANTING	36,154 SF	⑪ BIKE RACKS	2		
③ CONC. PAVING	13,107 SF	⑫ DOG WASTE STATION	2		
④ RUBBERIZED SURFACING	7,925 SF	⑬ ENTRY SIGN	1		
⑤ PLAY AREA WITH SHADE	1	⑭ SHADE SHELTER	1		
				REVISION	

SCALE: 1/8" = 1'-0"



CITY OF SAN DIEGO PARK AND RECREATION DEPARTMENT

THE GENERAL DEVELOPMENT PLAN

# WALDEN

NEIGHBORHOOD PARK

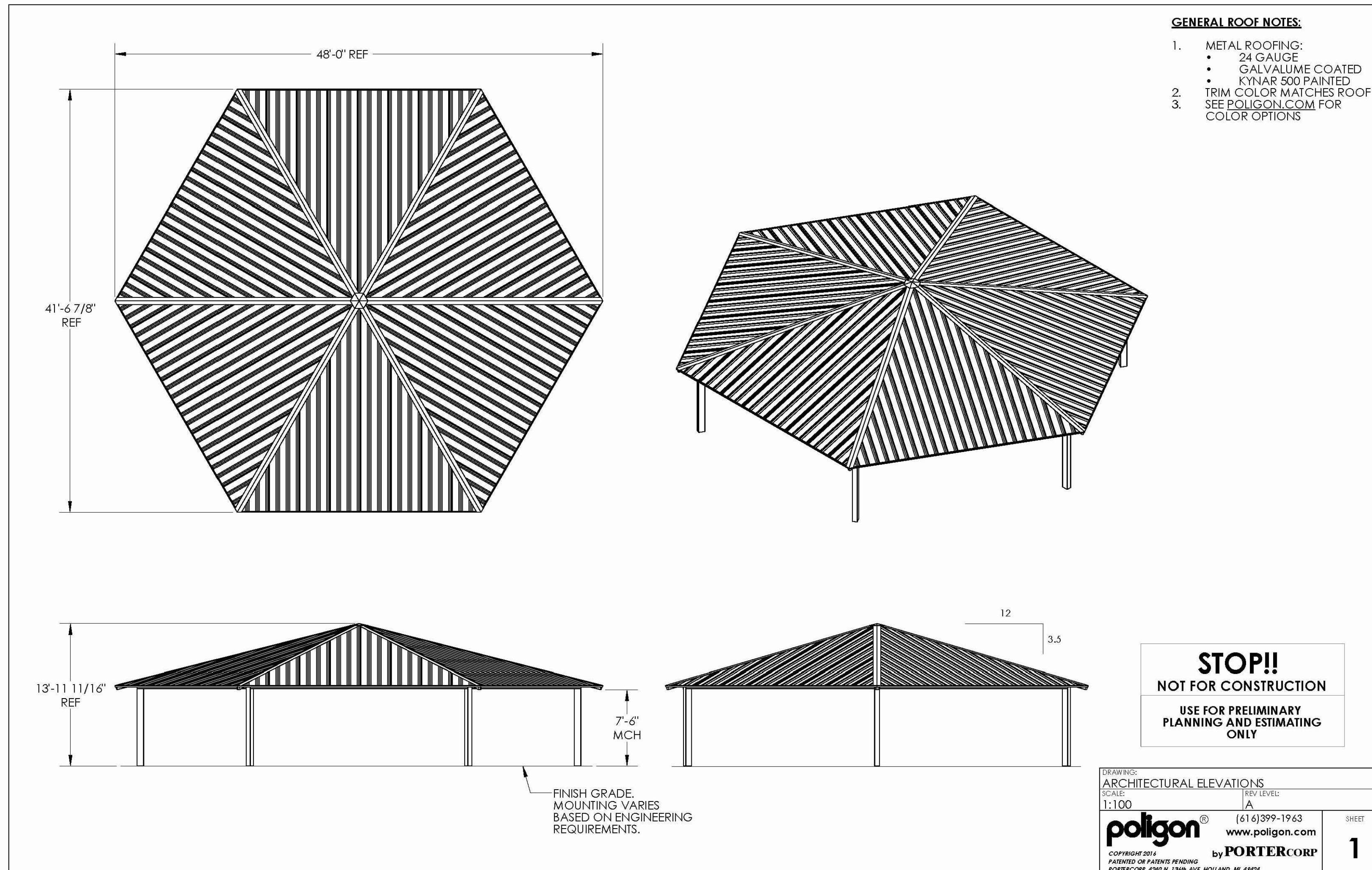
PSD

(PSD #)

LAMBERT COORDINATES:

THOMAS BROTHERS PAGE:

BUILDING PLANS AND ELEVATIONS



HEX 48 SHADE STRUCTURE "POLYGON", BROWN ROOF

COUNCIL DISTRICT: COMMUNITY PLAN AREA:

DATE	ACTION	RESO. NO.	COST \$:	ACRES:
	SITE ACQUIRED			
	SITE DEDICATED	ORD. NO.		
	GDP CONSULTANT HIRED	RESO. NO.	NAME:	
	P&R BOARD APPROVAL	PF&R APPROVAL	DATE:	
	INITIAL DEVELOPMENT	CIP NO.	J.O. NO.	DRWG. NO.
		CIP NO.	J.O. NO.	DRWG. NO.
		CIP NO.	J.O. NO.	DRWG. NO.
		CIP NO.	J.O. NO.	DRWG. NO.
		CIP NO.	J.O. NO.	DRWG. NO.
		CIP NO.	J.O. NO.	DRWG. NO.

IMPROVEMENTS SUMMARY (DATA FROM AS-BUILT DRAWINGS)					
ITEM	QUANTITY	ITEM	QUANTITY	ITEM	QUANTITY
TOTAL SITE	1.9 AC.	6 BENCHES	6	15 SECURITY LIGHTING	13
TOTAL HARDSCAPE	0.48 AC.	7 PICNIC TABLES	15	15 GAL. TREES	10
TOTAL PLANTING AREA	1.42 AC.	8 TRASH RECEPTACLES	3	24" BOX TREES	20
IMPROVED AREA	1.9 AC.	9 BBQ UNITS	2		
1 TURF	25,886 SF	10 DRINKING FOUNTAIN	1		
2 NATIVE PLANTING	36,154 SF	11 BIKE RACKS	2		
3 CONC. PAVING	13,107 SF	12 DOG WASTE STATION	2		
4 RUBBERIZED SURFACING	7,925 SF	13 ENTRY SIGN	1		
5 PLAY AREA WITH SHADE	1	14 SHADE SHELTER	1		
				REVISION	

CITY OF SAN DIEGO PARK AND RECREATION DEPARTMENT

THE GENERAL DEVELOPMENT PLAN

# WALDEN

NEIGHBORHOOD PARK

PSD (PSD #)

LAMBERT COORDINATES: THOMAS BROTHERS PAGE:



THE CITY OF SAN DIEGO  
M E M O R A N D U M

DATE: November 15, 2023  
TO: Rania Amen, Director, Engineering & Capital Projects Department  
FROM: Andy Field, Director, Parks and Recreation Department  
SUBJECT: General Development Plan Approvals for Multiple Parks

---

The Parks and Recreation Board has reviewed and recommended approval of the new or amended General Development Plans for the following parks:

<u>Project Name:</u>	<u>Date Reviewed:</u>
3 Roots Community Park (Bruce Brown Community Park)	November 19, 2020
Allied Gardens Community Park (Dog Off-Leash Area)	April 20, 2023
Balboa Park Natural History Museum Gardens	October 21, 2021
Beyer Community Park	September 17, 2020
Boone Elementary School Joint Use Facility	February 17, 2022
Chollas Triangle Park	November 17, 2022
Eastbourne Neighborhood Park	February 16, 2023
Emerson Elementary School Joint Use Facility	May 19, 2022
Epoca Neighborhood Park	September 15, 2022
Eugene Brucker Education Center (Dog Off-Leash Area)	April 21, 2022
Hidden Trails Neighborhood Park	January 21, 2021
John Baca Neighborhood Park	June 17, 2021
Junipers Neighborhood Park	April 15, 2021
Linda Vista Community Park (Community Garden)	April 21, 2022
Marston Middle School Joint Use Facility	January 20, 2022
Martinez Neighborhood Park	September 15, 2022
Mission Bay High School Joint Use Facility	February 17, 2022
Mission Gorge Park	January 21, 2021
Normal Heights Elementary Joint Use Facility	March 17, 2022
North Park Community Park (Dog Off-Leash Area)	May 19, 2022
Shoal Creek Neighborhood Park	February 16, 2023
Southwest Neighborhood Park (Grove Neighborhood Park)	February 18, 2021

Project Name:

Date Reviewed:

Ward Canyon Neighborhood Park (Dog Off-Leash Area)

June 16, 2022

Whitman Elementary School Joint Use Facility

February 18, 2021

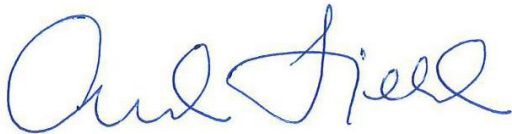
Wilson Middle School Joint Use Facility

January 20, 2022

Based on the recommendations from the Parks and Recreation Board, the Parks and Recreation Department hereby approves all the General Development Plans for the projects listed above.

If you have questions or would like additional information, please reach out to me at [afield@sandiego.gov](mailto:afield@sandiego.gov) or (619) 235-1110.

Thank you,



Andy Field, Director  
Parks and Recreation Department

AF/mg

Attachments: General Development Plans (for listed projects)

cc: Karen Dennison, Assistant Director, Parks and Recreation Department  
Tom Tomlinson, Assistant Director, Parks and Recreation Department  
Steve Palle, Deputy Director, Parks and Recreation Department  
Gina Dulay, Deputy Director, Parks and Recreation Department  
Heidi Vonblum, Planning Director, Planning Department  
Michelle Abella-Shon, Program Manager, Parks and Recreation Department  
Ryan Barbrick, Supervising Management Analyst, Parks and Recreation Department



## Recreational Value Scoring - Walden Neighborhood Park

Park Size Category	Points	Proposed Improvements/ expansion	Notes
Park Acreage: Points are awarded to parks based on their overall acreage.	7 point per acre	14	1.9 acres
Parks under an acre will receive 0.875 points for each 1/8 acre.	0.875 points for each 1/8 acre	0	
<b>AMENITIES/RECREATION OPPORTUNITIES</b>			
Health/Fitness/Sports Category	Points	Proposed Improvements/ expansion	Notes
Play Area	7 pt. per 750 sf of play area <sup>1</sup>	70	7,925 SF
Nature Exploration Playground <sup>11</sup>	7 pt. per 1/2-acre	0	
Multi-Purpose Turf Area - point per each 1/2 acre	7 pt. per 1/2 acre	7	0.59 acres turf
Active Recreation Fields	56 points for an active recreation field module (1 soccer field and 2 softball fields) or 28 points for a single softball or soccer field <sup>6</sup>	0	
Basketball/Tennis/Pickleball/Sand Volley Ball	7 pt. per each full court (3.5 point for half-court) <sup>6</sup>	0	
Small Hardcourt Areas: with pavement-coating mark-outs	3.5 pt. per hardcourt area; 7 pts. maximum <sup>5</sup>	0	
Sports Lighting - pickleball, volleyball, basketball full-court - or equivalent to basketball full-court	3.5 pt. per court <sup>12</sup>	0	
Sports Lighting - single softball field, full-size	7 pt. for ea. full size field <sup>12</sup>	0	
Sports Lighting - each pair of softball fields or full-size soccer field	14 pts. <sup>12</sup>	0	
Splash Pad (water playground)	14; 14 pts. maximum	0	
Multi-use Pathways: (Route Type 6, per SD Pedestrian Master Plan)	7 pt. per 1/2 mile	0	
Decomposed Granite or Dirt Trails: 4 ft. min. width, (Route Type 7, SD Pedestrian Master Plan)	7 pt. per 1 mile	0	
Fitness Circuit	7 pt. for ea. 3 pieces of equip. w/ signage; 21 pts. maximum per 5 acres	0	
Specialty Recreation (hard-surface) pump tracks, skate plaza or similar	7 pt. per 5,000 sf each	0	
Specialty Recreation (soft-surface)	3.5 pt. each; 7 pts. Maximum	0	
Specialty Recreation: disc golf or similar (min. 1/2 acre) <sup>2</sup>	7 pt. each; 14 pts. maximum	0	

**Recreational Value Scoring - Walden Neighborhood Park**

<b>Social Spaces Category</b>		<b>Proposed Improvements/ expansion</b>	<b>Notes</b>
Off-Leash Dog Area - 1/8 acre minimum fenced area	10.5 pts. for ea. area less than 3 acres	0	
Off-Leash Dog Area - 3 acres minimum fenced area	21 pts. for ea. area 3 acres and larger; 42 pts. Maximum	0	
Food Area/Concessions or Clubhouse Building (if separate from Rec Center), 250 s.f. minimum size	7 pt, 7 pt. maximum	0	
Community Garden <sup>3</sup>	7 pt for ea. 10 plots; 14 pts. maximum	0	
Interactive/Technology Element	7 pt. maximum	0	
Performance/Event Space: 5,000 s.f. minimum size paved area with seating, lighting and utilities (power, data, sound) <sup>8</sup>	21; 21 pts. maximum	0	
<b>Site Amenities Category</b>		<b>Proposed Improvements/ expansion</b>	<b>Notes</b>
All-weather shade cover/pavilion with tables/seating	7 pt. for ea. 400 sq. ft roof area (min. size)	7	
Restroom building	21 pt. per building	0	
Ranger Station Facilities: with public educational/interpretive display areas(s)	7 pt. per 1,000 sf	0	
Amphitheater: with hardscape seating and universal access <sup>8</sup>	7 pt. per 40-person capacity; 14 pts. maximum	0	
Wayfinding Signage System <sup>9</sup>	3.5 pt per system; 7 pts. maximum	0	
Public Art/Placemaking Elements (only 1 element per space)	3.5 pt. for each element; 7 pts. maximum	0	
Creation of wetlands area(s) or native planting restoration area(s) <sup>7</sup>	10.5 pt per acre	0	
<b>ACCESS/CONNECTIVITY</b>		<b>Proposed Improvements/ expansion</b>	<b>Notes</b>
	<b>Points</b>		
Linkages: connection to a CI 1 Bike or Cycle Track	21; 21 pts maximum	0	
Linkages: connection to a trail system in open space	14; 14 pts maximum	0	
Integrated with transit: within 500 ft. walking distance to a transit stop or closer	14; 14 pts maximum	0	
Integrated with transit: within 1/4-mile walking distance to a transit stop	7; 7 pt. maximum	0	
Connection to Active Public Realm (less than 50 feet to café, restaurants, gym/fitness, retail)	7; 7 pt. maximum	0	
Connection to Public/Civic Use (co-location with school, library, non-profit)	7; 7 pts maximum	0	
Connection to Natural Area/Scenic View Corridor (must have physical structure to connect or provide view access)	7; 7 pts maximum	0	

**Recreational Value Scoring - Walden Neighborhood Park**

<b>ACTIVATION &amp; ENGAGEMENT</b>		<b>Proposed Improvements/ expansion</b>	<b>Notes</b>
Interpretive/Education/Cultural Elements, such as Tribal cultural elements: minimum of 10 square feet of sign art/copy display area	7; 7 pt. maximum	0	
Space dedicated to programmed activities, weekly minimum occurrences: 7 pt. for 5,000-10,000 s.f.; 14 pts. for 10,000 or more s.f.	14; 14 pts maximum	0	
Recreational Features for the Disabled <sup>4</sup>	21; 21 pts maximum	0	
Trails or Multi-use Pathways contiguous with wetland area(s), or significant water body, or native planting restoration area(s) <sup>7</sup>	7 pt per 1/2 mile	0	
Urban Forestry: at 5-year growth 50% of all site hardscape (roads, sidewalks, parking lots) have greater than 60% tree canopy <sup>10</sup>	14; 14 pts maximum	0	
<b>TOTAL VALUE POINTS PER PARK:</b>		<b>98</b>	<b>0</b>

<b>Recreation Value Points Tabulation Summary:</b>	
Total Proposed Facility Value Points	98
<b>Total Recreation Value Points **</b>	<b>98</b>
<b>Population Served</b>	<b>980 Residents</b>

\* See PMP Appendix D for Notes

\*\* RVP Summary is subject to change pending final acceptance by the City after construction