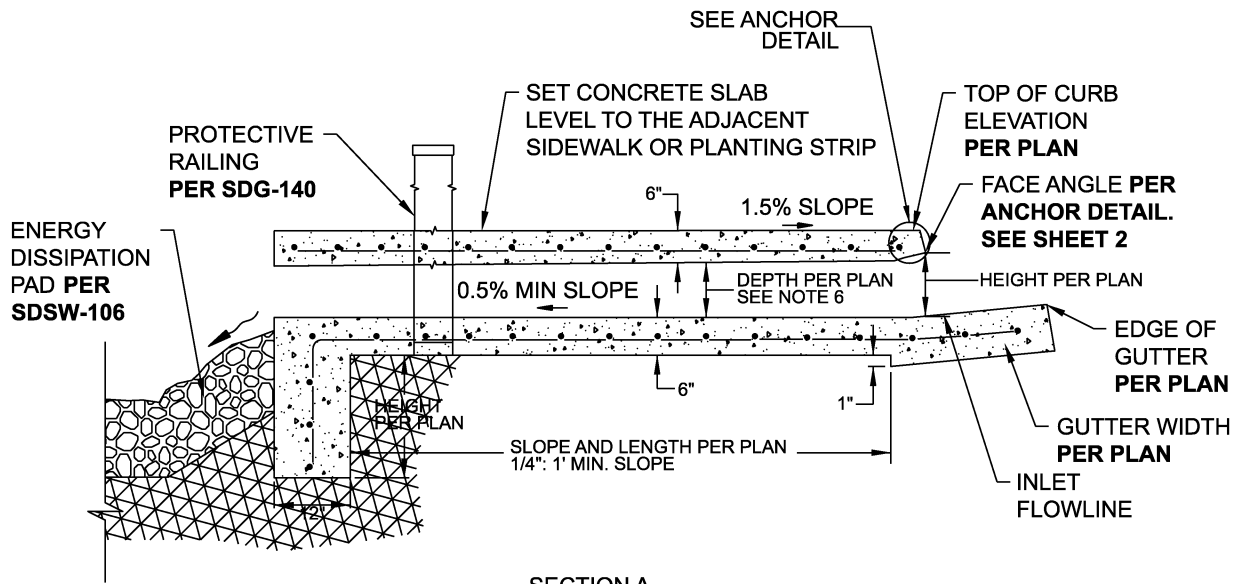


**PLAN VIEW**  
NOT TO SCALE



**SECTION A**  
NOT TO SCALE

REVISION	BY	APPROVED	DATE
ORIGINAL	LT	R. AMEN	12/23

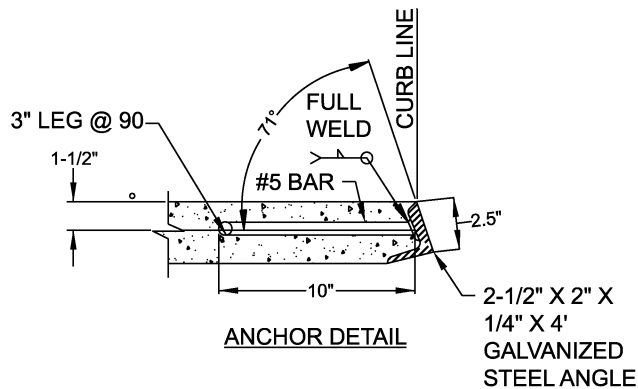
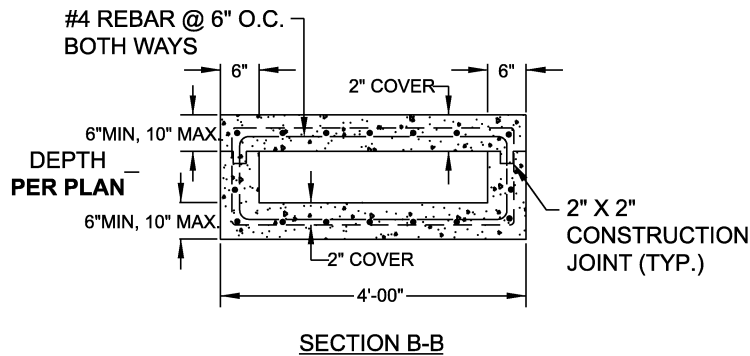
CITY OF SAN DIEGO - STANDARD DRAWING

RECOMMENDED BY THE CITY OF SAN DIEGO STANDARDS COMMITTEE

**CURB-FACE INLET**

*Alaine James* 12/28/2023  
COORDINATOR R.C.E. 81047 DATE

DRAWING NUMBER **SDSW-105**



LEGEND ON PLANS



**NOTES:**

1. DESIGN OF STORMWATER INFRASTRUCTURE SHALL CONFORM TO THE STORMWATER STANDARDS MANUAL AND DRAINAGE DESIGN MANUAL, AND SHALL BE SUBJECT TO REVIEW. USE OF THIS DETAIL DOES NOT PRECLUDE SUCH REQUIREMENTS.
2. CONCRETE SHALL BE 560-C-3250.
3. BEDDING SOILS SHALL BE COMPACTED TO A RELATIVE COMPACTION OF 90%.
4. THE REMOVAL OF EXISTING SIDEWALK, CURB, AND GUTTER AS NEEDED FOR CONSTRUCTION OF CURB-FACE INLET SHALL BE PER SDG-156.
5. WHEN CURB INLET OPENING HEIGHT (H) EXCEEDS 8" INSTALL 1" DIA. STEEL PROTECTION BAR PER SDD-102.
6. ALL REINFORCING STEEL REBARS SHALL BE GRADE 60 DEFORMED BARS.
7. MINIMUM DEPTH OF CURB INLET TO BE 4".

SHEET 2 OF 2

REVISION	BY	APPROVED	DATE	CITY OF SAN DIEGO - STANDARD DRAWING	RECOMMENDED BY THE CITY OF SAN DIEGO STANDARDS COMMITTEE
ORIGINAL	LT	R. AMEN	1223		<b>CURB-FACE INLET</b>
				DRAWING NUMBER <b>SDSW-105</b>	