



City of San Diego Commission for Arts and Culture

**PUBLIC ART COMMITTEE**

**AGENDA**

City Administration Building 12<sup>th</sup> floor Committee Room

202 W C Street, San Diego, CA 92101

Hyperlink to attend the meeting at its scheduled time available [here](#)

**Friday, February 9, 2024**

**8:30 a.m. – 9:30 a.m.**

---

|           |      |  |   |
|-----------|------|--|---|
| 8:30 a.m. | I.   | Call to Order  | Keith Opstad, Chair                               |
| 8:35 a.m. | II.  | Non-agenda Public Comment  |   |
| 8:40 a.m. | III. | Chair's Reports  |   |
|           |      | A. Commission Business   |   |
|           |      | B. <b>ACTION</b> – January 12, 2024 Minutes  |   |
|           |      | C. Other Reports   |   |
| 8:50 a.m. | IV.  | <b>ACTION</b> – Final Artwork Proposal for Willie Henderson Sports Complex by James Dinh | Lara Bullock Ph.D., Civic Art Project Manager     |
| 9:15 a.m. | V.   | Reports  | Christine E. Jones, Chief of Civic Art Strategies |
|           |      | A. Staff Reports   |   |
|           |      | B. Committee Member Reports  |   |
| 9:30 a.m. | VI.  | Adjourn  |   |

Meetings will be recorded. PUBLIC COMMENT: Any member of the public may address the Committee on any agenda item during agenda item public comment, or on any matter not presently pending or previously discussed at the Committee that is within the Committee's area of responsibility during non-agenda public comment. Each public comment speaker is limited to three (3) minutes. In addition to in-person attendance, members of the public may submit their comments via a public comment [webform, or they may join the meeting as a "webinar attendee" at the link provided in the Commission or Committee meeting website](#). For members of the public wishing to address the Committee under Public Comment via the [webform](#) prior to the meeting, instructions for word limitations and deadlines will be noted on the [webform](#). As required by the Americans with Disabilities Act (ADA), requests for agenda information to be made available in alternative formats, and any requests for disability-related modifications or accommodations required to facilitate meeting participation, including requests for alternatives to observing meetings and offering public comment as noted above, may be made by contacting the City Clerk at (619) 533-4000 or <mailto:cityclerk@sandiego.gov>. The City is committed to resolving accessibility requests swiftly in order to maximize accessibility.



# Commission for Arts and Culture

## City of San Diego Commission for Arts and Culture PUBLIC ART COMMITTEE (PAC)

### MINUTES

Friday, January 12, 2024

#### Members Present

Fritz Friedman, Vice Chair  
Francisco Eme  
Melinda Guillen  
Wayne Holtan  
Abe Hughes  
Alessandra Moctezuma  
Eun Jung Park  
Imani Robinson  
Denise Rogers

#### Members Absent

Keith Opstad, Chair  
Jessica Berlanga-Taylor  
Ann Bossler, Ex Officio

#### Staff Present

Lara Bullock  
Christine E. Jones  
Charles G. Miller

- I. Call to Order | [View Here](#) – Commissioner Fritz Friedman called the City of San Diego (City) Commission for Arts and Culture’s Public Art Committee (PAC) to order at 8:30 a.m. at the City Council Committee Room - 12<sup>th</sup> Floor, City Administration Building, 202 C Street, San Diego, California 92101.
- II. Non-agenda Public Comment – None
- III. Chair’s Reports
  - A. Commission Business – [View Here](#)
  - B. **ACTION** – December 8, 2023, Minutes | [View Here](#) – Commissioner Fritz Friedman introduced the item. **Eun Jung Park made a motion to approve the PAC minutes of December 8, 2023. Commissioner Abe Hughes seconded the motion. The vote was 7-0-0; the motion passed.**  
 Yea: Friedman, Guillen, Holtan, Hughes, Moctezuma, Park, and Rogers (7)  
 Nay: (0)  
 Abstention: (0)  
 Recusal: (0)
  - C. Other Reports – None

*Francisco Eme arrived at 8:35 a.m.*  
*Commissioner Imani Robinson arrived at 8:42 a.m.*

#### IV. **ACTIONS**

- A. Temporary Exhibit Proposal from Safdie Rabines Architects: Harbor Bridge Butterfly by Taal Safdie | [View Here](#) – Commissioner Fritz Friedman introduced the item. **Commissioner Imani**

**Robinson made a motion to recommend to the City of San Diego Commission for Arts and Culture (Commission) that the Executive Director of the Commission approve the temporary exhibit titled *Harbor Bridge Butterfly* consisting of an an installation by artist Taal Safdie for temporary exhibition installed on the Harbor Drive Pedestrian Bridge. Denise Rogers seconded the motion. The vote was 9-0-0; the motion passed.**

Yea: Eme, Friedman, Guillen, Holtan, Hughes, Moctezuma, Park, Robinson, and Rogers (9)

Nay: (0)

Abstention: (0)

Recusal: (0)

Public Comment: Pete Garcia, Urban Interventions; *Bay to Park Paseo* | [View Here](#)

- B. Temporary Mural Proposal from the AjA Project: *Terra Memoria* by Shinpei Takeda | [View Here](#)**  
– Commissioner Fritz Friedman introduced the item. **Wayne Holtan made a motion to recommend to the City of San Diego Commission for Arts and Culture (Commission) that the Executive Director of the Commission approve the temporary mural titled *Terra Memoria* consisting of a mural by artist Shinpei Takeda for temporary exhibition on the bollard-controlled alleyway adjacent to the City Heights Park, Recreation Center, Performance Annex, and Library. Commissioner Alessandra Moctezuma seconded the motion. The vote was 9-0-0; the motion passed.**

Yea: Eme, Friedman, Guillen, Holtan, Hughes, Moctezuma, Park, Robinson, and Rogers (9)

Nay: (0)

Abstention: (0)

Recusal: (0)

V. Reports

A. Staff Reports – [View Here](#)

B. Committee Member Reports – None

VI. Adjourn – Commissioner Fritz Friedman adjourned the meeting at 9:10 a.m.



# Commission for Arts and Culture

## STAFF REPORT

DATE ISSUED: February 7, 2024

ATTENTION: Public Art Committee

SUBJECT: Final Artwork Proposal by James Dinh: Willie Henderson Sports Complex

REFERENCES: 1) [Commission for Arts and Culture Department Instruction 1.00 – Collection Management Policy for the Civic Art Collection](#)  
2) Final Artwork Proposal Package

STAFF CONTACT: Lara Bullock, Ph.D., Civic Art Project Manager

---

### STAFF RECOMMENDATION:

Recommend to the City of San Diego Commission for Arts and Culture (Commission) that the Executive Director of the Commission accept the Final Artwork Proposal by James Dinh in fulfillment of the City of San Diego's (City) collecting mission, collection scope and accession criteria as established in Section 5 – Collecting Mission, Section 6 – Scope of the Collection and Section 8.2 – Accession Criteria of the Commission for Arts and Culture Department Instruction 1.00 – *Collection Management Policy for the Civic Art Collection*.

### SUMMARY:

Artist James Dinh was commissioned to design, fabricate and transport permanent, site-specific artwork for the Phase I improvements to the Willie Henderson Sports Complex and consult during installation of artwork at the site by the City. Improvements planned for the Willie Henderson Sports Complex, which is located in the Mountain View neighborhood, include futsal courts, indoor/outdoor soccer areas, a new playground, community garden, picnic tables, water fountains, fencing, lighting, and public art, as well as improvements to the turf, parking lots, and sidewalks. Schmidt Design Group is the lead designer for the Willie Henderson Sports Complex Improvements. The artist has collaborated closely with Schmidt Design Group.

On September 15, 2023, Dinh presented his preliminary artwork idea to the Public Art Committee (PAC) for feedback. PAC also provided feedback on the artist's schematic artwork proposal on December 8, 2023. In addition to PAC's feedback, the final artwork proposal is informed by suggestions from the public, the City's Parks and Recreation Department, and other various City departments.

### FISCAL CONSIDERATIONS:

This project is funded by the City as set forth in *City of San Diego Council Policy 900-11 - Inclusion of Public Art in Selected Capital Improvements program Projects*.



**WILLIE HENDERSON SPORTS COMPLEX**

Final Artwork Proposal  
James Dinh

## a. Site Plan

- Existing Willie Henderson Sports Complex will be renovated.
- Artwork will be installed as part of renovations.



## a. Site Plan

- Artist worked with park design team to confirm location of artwork.
- Artwork to be located at the entrance of the main pedestrian pathway into park.
- As shown in the landscape architectural design, the pathway will have quotes from famous athletes inscribed along the concrete pathway.
- The artwork is located so that it incorporates one of these quotes into the artwork's overall design.

In Phase 2 of park renovations, the existing parking lot will be converted to park space.



## b. Photographic Survey of Site





## c. Research & Findings

- Willie Henderson Sports Complex is located in the Mountain View neighborhood, part of the larger Southeastern San Diego Community.
- The community is among the most diverse and historic areas of the city. As San Diego experienced a population boom after World War II, many tracts of rural land in the eastern part of the community (including Mountain View) were developed. At that time, it was one of the few communities in the City with housing available to working class and non-white residents.
- The community has been home to many African American families and, more recently, those from Latin America.
- Once known as the Southeast Athletic Field, the park was renamed in 1986 in honor of Willie Henderson, who lived in the area and built ball fields for youth.
- The park currently has a baseball field, two softball fields and one youth ball field, three multi-purpose fields for soccer and football, two outdoor courts for basketball and volleyball, two tot lots, picnic areas, and a rec room.
- Schmidt Landscape Architects has been contracted by the City to provide designs for the renovation of the park.

- As the park interfaces with the residential neighborhood, the artwork should be pedestrian-scaled yet also be an iconic place-making element and foster engagement.



- In Phase 2 of park renovations, the existing parking lot (that fronts the proposed artwork location) will be converted to park space. Therefore, the artwork should anticipate future park changes and seamlessly tie into the overall park design.



## d. Community Input 1

- Meet the Artist event took place on July 5, 2023 at Willie Henderson Sports Complex.
- Artist provided a “My Art” handout for community members to write or draw what they envision the artwork could be.
- Themes arose such as sports, community, and a recognition of inspirational people, especially athletes from the local Lincoln High School, many of whom have gone to play professional football.

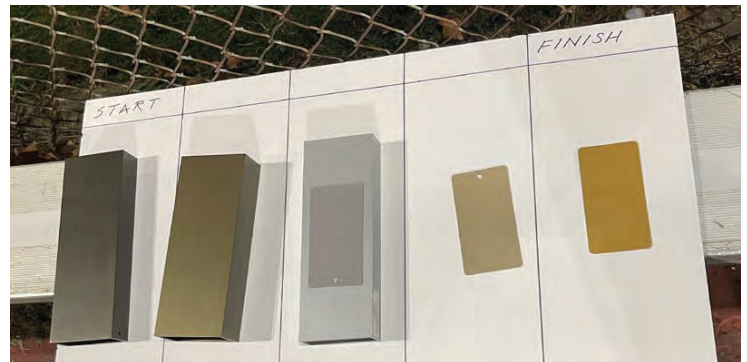


## d. Community Input 2

- Artist Open House event took place on December 15, 2023 at Willie Henderson Sports Complex.
- Artist provided sample paint colors for the proposed 5 Let's Move sculptures.
- Community members were asked to order the colors according to their preference: sculpture 1 being at the starting line and the sculpture 5 being the finish line.
- The table below shows a tally of the community's selections.

| Respondent               | Sculpture 1  | Sculpture 2  | Sculpture 3           | Sculpture 4  | Sculpture 5 |
|--------------------------|--------------|--------------|-----------------------|--------------|-------------|
| 1                        | Bronze light | Gold rose    | Silver                | Gold light   | Gold        |
| 2                        | Bronze light | Silver       | Gold light            | Gold rose    | Gold        |
| 3                        | Silver       | Gold light   | Gold                  | Bronze light | Bronze dark |
| 4                        | Bronze dark  | Bronze light | Silver                | Gold light   | Gold        |
| 5                        | Bronze dark  | Gold         | Bronze light          | Gold light   | Silver      |
| 6                        | Bronze dark  | Silver       | Gold light            | Bronze light | Gold        |
| 7                        | Bronze light | Silver       | Gold                  | Bronze dark  | Gold light  |
| 8                        | Gold         | Silver       | Bronze light          | Silver       | Bronze dark |
| 9                        | Gold light   | Bronze dark  | Bronze light          | Silver       | Gold        |
| 10                       | Bronze light | Bronze dark  | Silver                | Gold light   | Gold        |
| 11                       | Silver       | Gold light   | Bronze dark           | Bronze light | Gold        |
| Majority color selection | Bronze light | Silver       | Bronze light / Silver | Gold light   | Gold        |

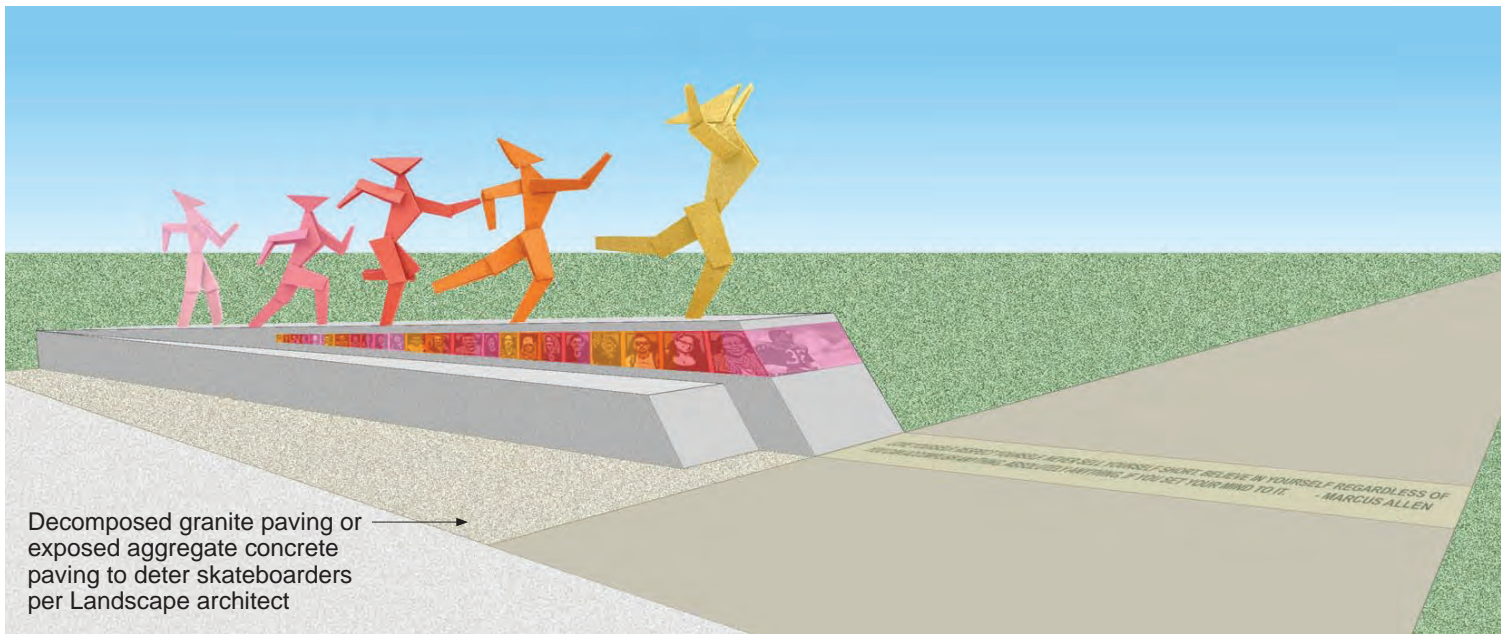
- The artist feels that the order of selected colors might still potentially be read as a hierarchy of different races.



Bronze dark    Bronze light    Silver    Gold light    Gold

## d. Design Team Input 1

- Landscape Architect offered to look into paving material that will deter skateboarders.
- Engineering & Capital Projects Department stated that the cost to construct the “Wall of Selfies” will be included in the overall construction budget of the park.
- Artist will be responsible for the design of the concrete platform and fabrication of the image panels.
- Landscape Architect recommended another location for the artwork that differs from the schematic design proposal. This location is shown in this final design.
- Landscape Architect agreed to design the graphic layout of the Marcus Allen quote to match the other quotes. Landscape architect agreed to detail the concrete paving of the quote. The quote will be included in the overall construction budget of the park.

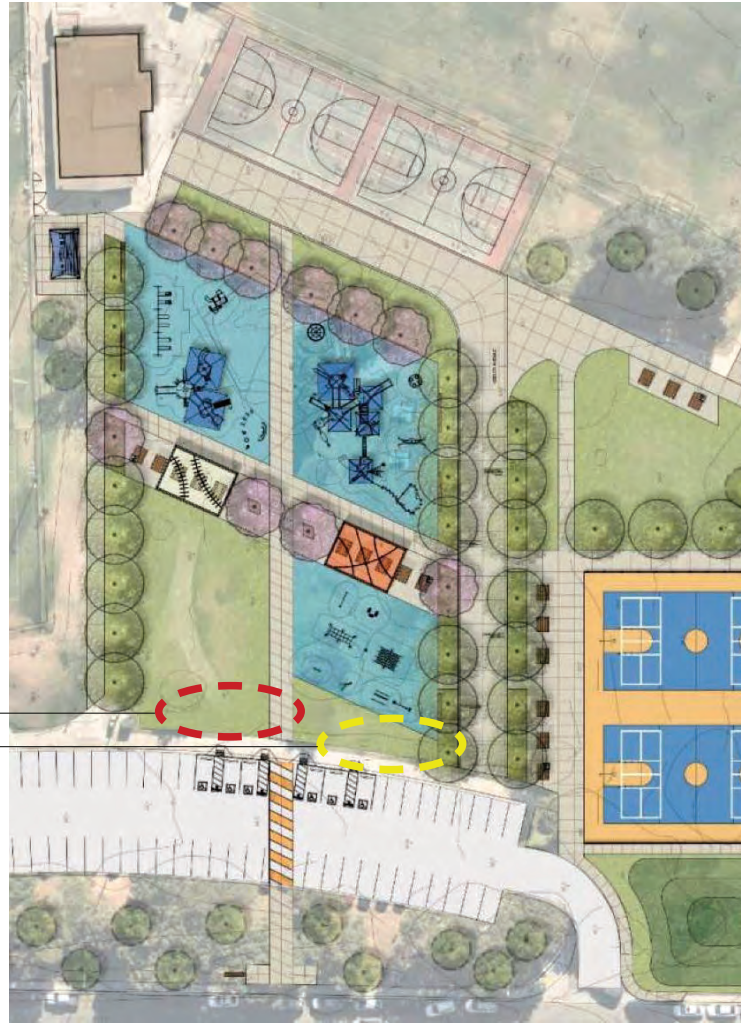


Decomposed granite paving or exposed aggregate concrete paving to deter skateboarders per Landscape architect

## d. Design Team Input 2

- Landscape Architect recommended another location for the artwork that differs from the schematic design proposal.
- Landscape Architect stated that new location is better, as the artwork will be associated with the main pedestrian pathway that leads into the park.
- Landscape Architect agreed to design the graphic layout of the Marcus Allen quote to match the other quotes. Landscape architect agreed to detail the concrete paving of the quote. The quote will be included in the overall construction budget of the park.

New artwork location  
Former artwork location



## d. Public Art Committee Input 1

- Artist presented the Preliminary Artwork Idea to the POC September 8, 2023.

- “Verify Marcus Allen quote”

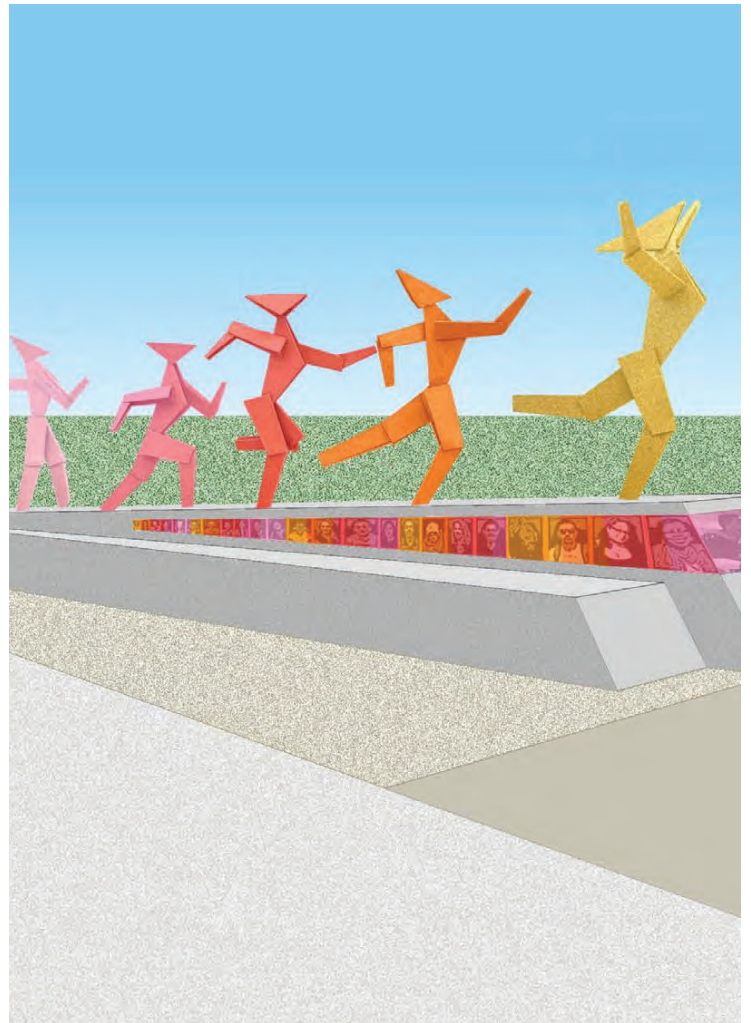
Tried different avenues to find a contact for Mr. Allen. He is no longer active with his “keynote speaker” PR company. Lincoln High was not responsive.

- “Examine possibility of making one of the ‘Let’s Move’ figures inviting to children”

After much consideration, the artist feels the figures should be all slightly larger than adult size. The figures are set on the “Wall of Selfies”, which is intended to deter people from climbing. Therefore, the artist would not want to further encourage children to climb.

- “Provide different movements for ‘Let’s Move’ figures”

Each figure will have a different “pose”. Together, the figures will look like a time-lapse series of running movements or a group of people moving.



## d. Public Art Committee Input 2

- Artist presented the Schematic Artwork Idea to the POC December 8, 2023.
- “Suggestion to consider painting the various body parts of each figure a different color.”

The artist consulted with a fabricator, who communicated that in order to paint the body parts different colors, either each sculpture would need to be hand-painted or the different parts masked and then spray-painted.

Considering the time-labor cost involved with hand-painting and the difficulty of painting the various tight “folds” of the sculpture, this method is deemed not feasible.

Masking the sculpture would also involve substantial time-labor, since with 6 body parts per figure and 5 colors, there would be 30 different combinations of body parts and colors that would require masking.

Furthermore, the faces’ of the figures would need to be painted a certain “neutral” color so as to prevent color-race associations.

- “Examine colors of the 5 figures so that they are not potentially read as a hierarchy of different races.”

The artist feels that a prudent approach will be to paint the figures with the colors: pink, dark pink, coral, orange, and metallic gold. A gold medal is commonly awarded for the highest achievement in sporting events, such as the Olympics. Painting the last figure a gold color will imply that everyone in the community has the potential to be a champion.

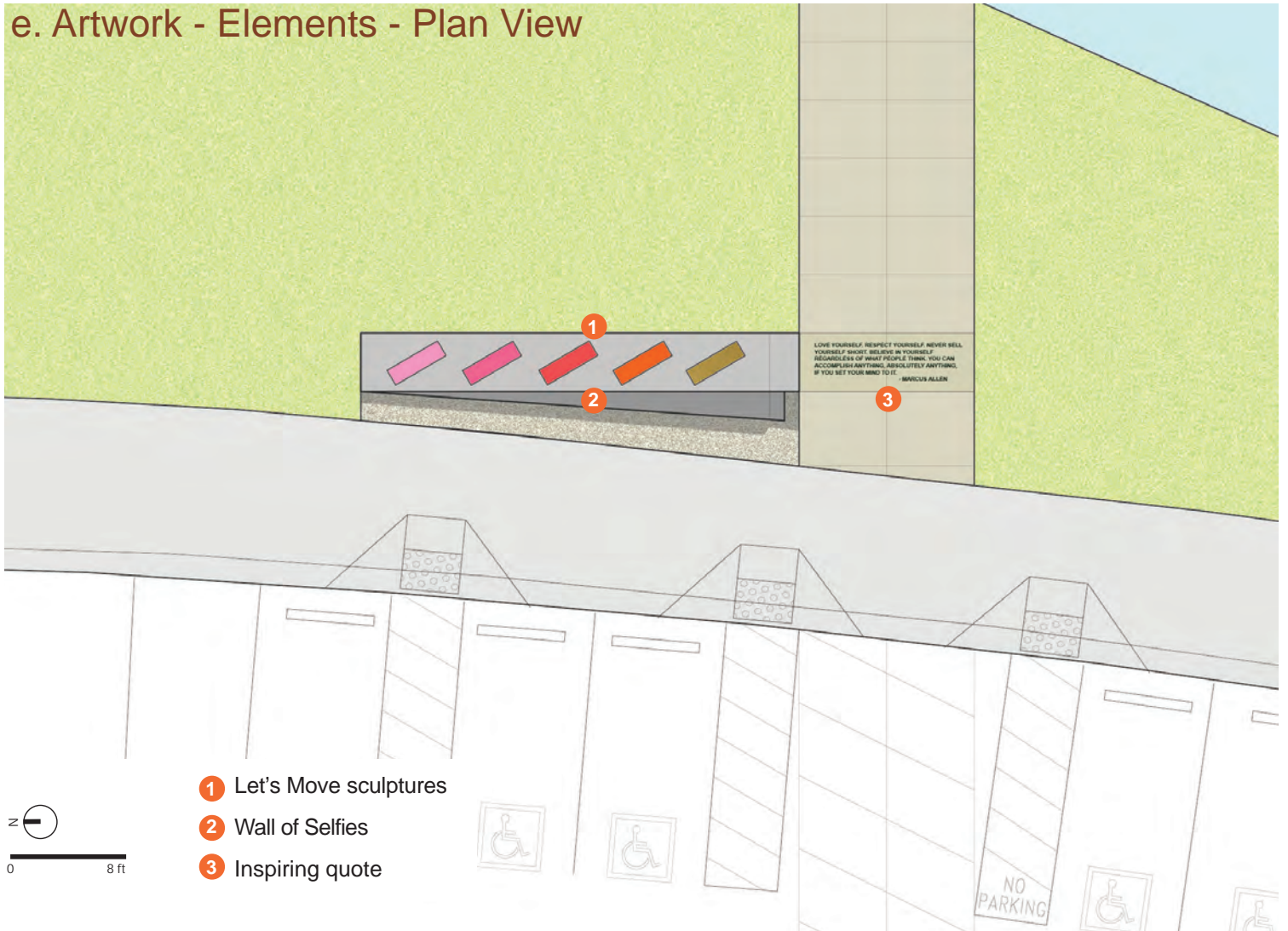
- “The connection between the faces [on the image panels] and the figures could be stronger.

The figures are intended to be semi-abstract with universal implications. The faces on the image panels “localize” the artwork and make it more accessible. The figures and faces compliment each other while being distinctive.

- “Think about other types of movement.”

The figures are intended to be a time-lapse series of running movements or a group of people moving towards a goal / finish line. The figures’ movements encapsulate and express this idea.

## e. Artwork - Elements - Plan View





## e. Artwork - Let's Move Sculptures



## f. Description - Let's Move Sculptures

### CONTENT

- 5 sculptures of semi-abstract “folded” steel figures.

### SCALE

- Each figure is slightly larger than human size, standing approximately 7 feet tall, 2 feet wide, and various lengths.

### LOCATION

- For location, refer to e. Artwork - Elements - Plan View.
- Figures will stand on a concrete podium that slopes from a height of 18 inches to 36 inches.

### CONTEXT

- Sculptures tie into the sports theme of the park design.
- The artwork is inspired by the “Let’s Move!” public health campaign that was spearheaded by former First Lady Michelle Obama.
- The campaign promoted physical activity through the support and cooperation of families, schools, and communities. The initiative stated that “Those who feel supported by friends and families or are surrounded by others interested in physical activity, are more likely to participate.”
- The artwork aims to celebrate physical activity and sports as a collective pursuit, and by extension celebrate the community itself.

### COMPONENT RELATIONSHIPS

- Painted complementary colors and having unique movements, the sculptures can be interpreted as a time-lapse series of running movements or people moving, dancing.



e. Artwork - Wall of Selfies



## f. Description - Wall of Selfies

### CONTENT

- Selfies will be taken during a community event or emailed to artist.
- Selfies will be used to create duo-tone illustrations.
- Illustrations will be fabricated as powder-coated aluminum image panels.
- Panels will be incorporated into the concrete podium that also serves as the backrest of a bench.

### SCALE

- Image panels will range from 4 inches to 12 inches high.
- Concrete podium/backrest will slope from a height of 18 inches to 36 inches and be approximately 48" deep.
- Concrete bench will be 18 inches high and deep.

### LOCATION

- For location, refer to e. Artwork - Elements - Plan View.

### CONTEXT

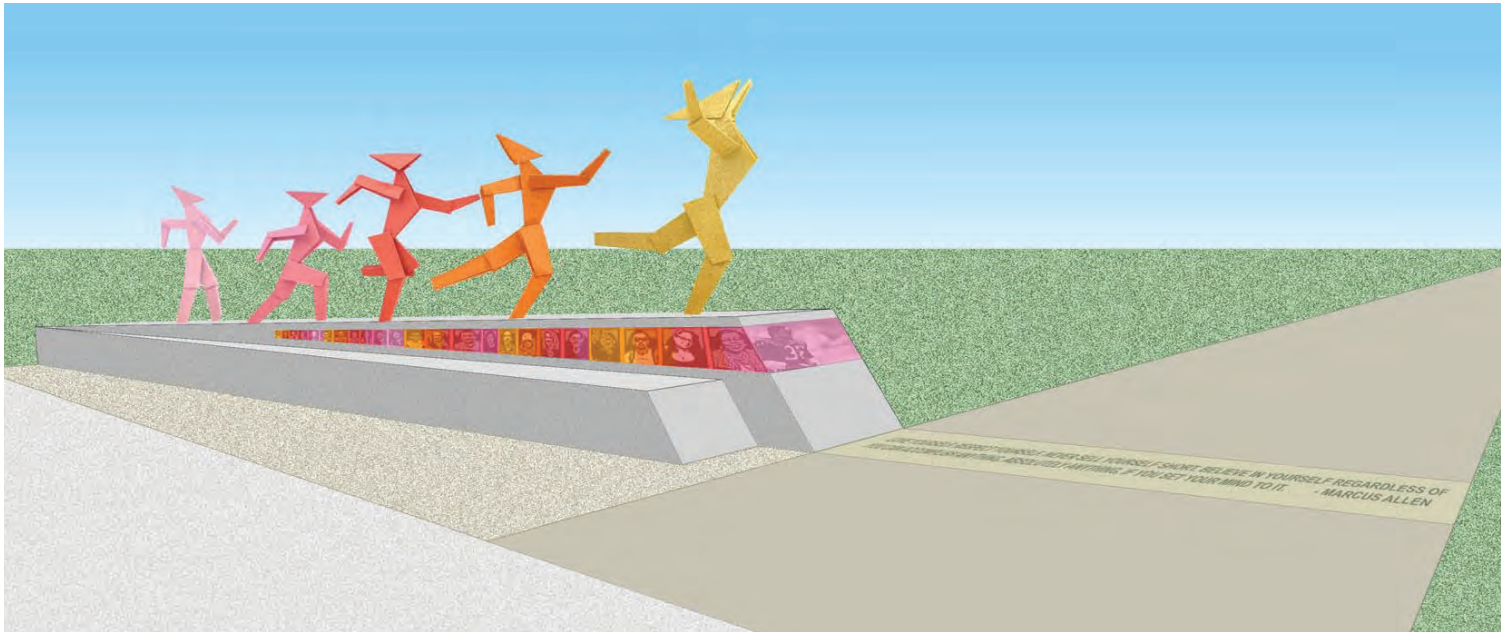
- The image panels will celebrate the community and local athletes.
- Further reinforces theme that sports, like community, is a collective pursuit.

### COMPONENT RELATIONSHIPS

- The image panels offer a less abstract representation than the 5 sculptures.
- The colors of the image panels and sculptures will be complementary.



## e. Artwork - Inspiring Quote



*Love yourself. Respect yourself. Never sell yourself short. Believe in yourself regardless of what people think. You can accomplish anything, absolutely anything, if you set your mind to it.*

- Marcus Allen

Sources:

[https://www.goodreads.com/author/quotes/357033.Marcus\\_Allen#:~:text=Marcus%20Allen%20Quotes&text=Respect%20yourself.,set%20your%20mind%20to%20it.](https://www.goodreads.com/author/quotes/357033.Marcus_Allen#:~:text=Marcus%20Allen%20Quotes&text=Respect%20yourself.,set%20your%20mind%20to%20it.)

[https://www.azquotes.com/author/22662-Marcus\\_Allen](https://www.azquotes.com/author/22662-Marcus_Allen)

<https://quotesgram.com/marcus-allen-quotes/>

## f. Description - Inspiring Quote

### CONTENT

- Inscribed on the concrete paving will be a quote by former pro-football player Marcus Allen, who graduated from the nearby Lincoln High School.
- “Love yourself. Respect yourself. Never sell yourself short. Believe in yourself regardless of what people think. You can accomplish anything, absolutely anything, if you set your mind to it.”

### SCALE

- The design and size of the quote panel will be determined in collaboration with the park design team, so that it will match the other quotes proposed along the walkway.

### LOCATION

- Quote will be one of several quotes along the walkway proposed by park design team.

### CONTEXT

- The quote honors a local athlete whose accomplishments are truly inspiring.
- The quote will inspire others, especially youth.

### COMPONENT RELATIONSHIPS

- The quote will tie into other quotes along pathway.
- The quote panel physically connects to the sculpture platform.
- The quote symbolically acts as the “finish line”. This triumph is expressed by the 5th sculpture with the raised arms.

Marcus Allen graduated in 1978 from Lincoln High School. He is a former football running back who played in the National Football League (NFL) for 16 seasons, primarily with the Los Angeles Raiders. Considered one of the greatest goal line and short-yard runners in NFL history, he played for the Raiders for 11 seasons and spent his last five seasons with the Kansas City Chiefs. While with the Raiders, he helped the team win Super Bowl XVIII.

Allen has the distinction of being the only player to have won the Heisman Trophy, an NCAA national championship, the Super Bowl, and be named NFL MVP and Super Bowl MVP. He was inducted to the Pro Football Hall of Fame in 2003 and the International Sports Hall of Fame in 2021.



## g. Material Samples

### LET'S MOVE SCULPTURES

- 3/8-inch thick steel.
- Sheared, deburred, and welded.
- Painted by powder-coating.
- Color: Tiger Drylac powdercoat or similar



Pink

Light pink

Coral

Orange

Gold



## g. Material Samples

### WALL OF SELFIES

- Poured-in-place concrete with integral color.
- 1/8-inch thick aluminum image panels.
- Panels are powder-coated with images in 5 colors complementary to the figures.



### INSPIRING QUOTE

- The design and size of the quote panel will be determined in collaboration with the park design team.
- Quote will be etched on to concrete paving.
- Possible etching method is by using vinyl stencil and sandblasting.

