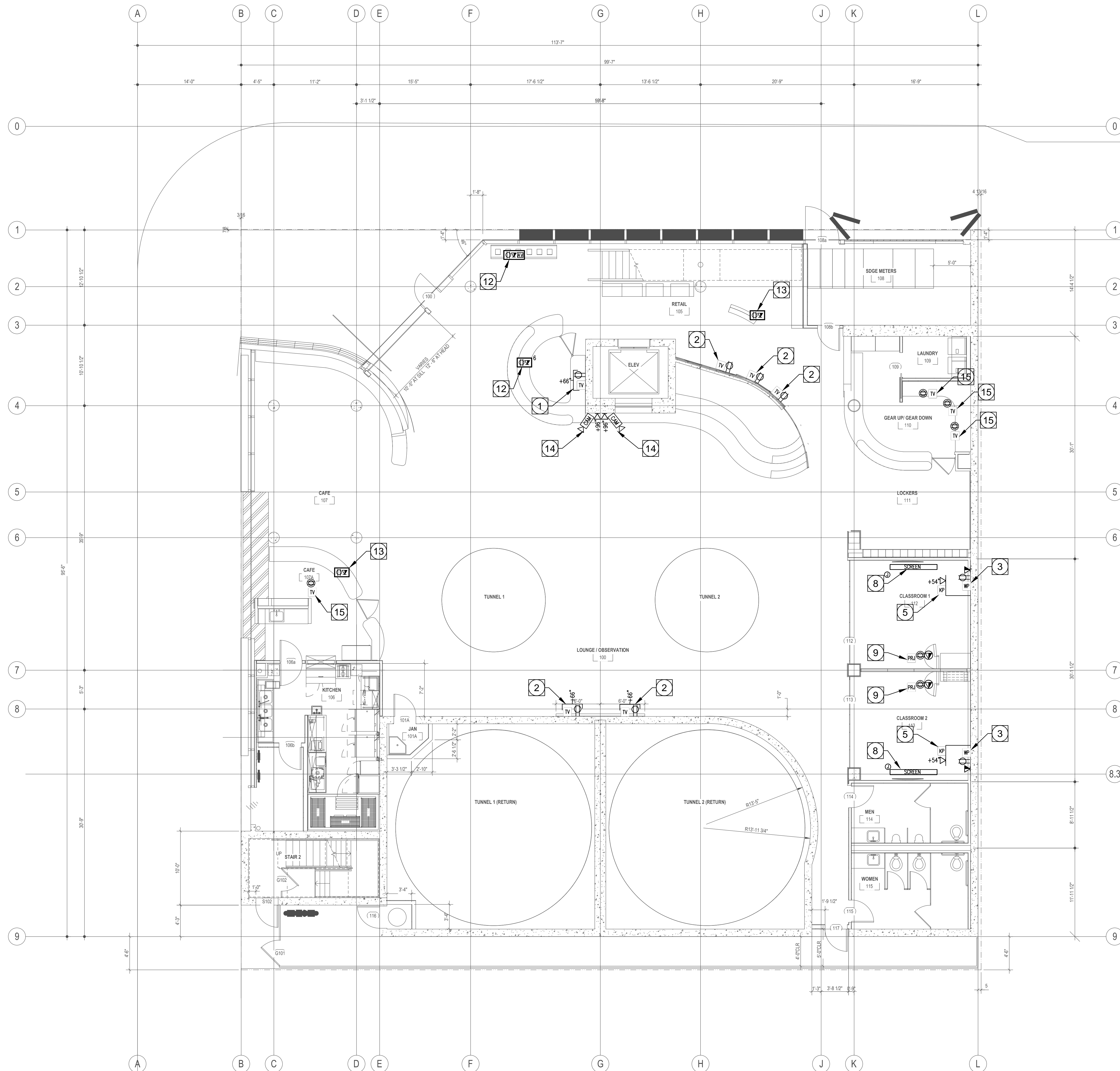


ALL IDEAS, DESIGN, ARRANGEMENTS AND PLANS INDICATED OR REPRESENTED BY THIS DRAWING ARE OWNED BY, AND THE PROPERTY OF CARRIER JOHNSON + CULTURE AND WERE CREATED, EVOLVED AND DEVELOPED FOR USE ON, AND IN CONNECTION WITH THIS PROJECT. NONE OF SUCH IDEAS, DESIGN, ARRANGEMENTS, OR PLANS SHALL BE USED BY, OR DISCLOSED TO ANY PERSON, FIRM, OR CORPORATION FOR ANY PURPOSE WHATSOEVER WITHOUT THE WRITTEN PERMISSION OF CARRIER JOHNSON + CULTURE. FILING THESE DRAWINGS OR SPECIFICATIONS WITH ANY PUBLIC AGENCY IS NOT A PUBLICATION OF SAME. NO COPYING, REPRODUCTION OR USE THEREOF IS PERMISSIBLE WITHOUT THE CONSENT OF CARRIER JOHNSON + CULTURE.



### KEY NOTES:

- \*\*\* ALL KEY NOTE DIMENSIONS ARE UNLESS OTHERWISE NOTED ON PLANS\*\*\*
- 1** TYPICAL LCD TV LOCATION
    - QTY (1) SINGLE GANG J-BOX MOUNTED AT 66" AFF WITH QTY (1) 1.25" EMT BROUGHT FROM J-BOX TO ACCESSIBLE CEILING BY ELECTRICAL CONTRACTOR
    - QTY (1) QTY DUPLEX RECEPTACLE MOUNTED AT 66" AFF. TYPICAL CURRENT DRAW 3 AMPS - BY ELECTRICAL CONTRACTOR
    - QTY (1) DATA RECEPTACLE MOUNTED AT 66" AFF - DATA CABLING AND FACE PLATE - BY DATA CONTRACTOR
    - QTY (1) CATV RECEPTACLE MOUNTED AT 66" AFF - CATV CABLING AND FACE PLATE - BY CATV CONTRACTOR
    - BACKING TO BE PROVIDED BY GENERAL CONTRACTOR
  - 2** INTERACTIVE LCD TV LOCATION
    - QTY (1) SINGLE GANG J-BOX WITH QTY (1) 1.25" EMT BROUGHT FROM J-BOX TO ACCESSIBLE CEILING BY ELECTRICAL CONTRACTOR
    - QTY (1) QTY DUPLEX RECEPTACLE. TYPICAL CURRENT DRAW 3 AMPS - BY ELECTRICAL CONTRACTOR
    - QTY (2) DATA RECEPTACLE - DATA CABLING AND FACE PLATE - BY DATA CONTRACTOR
    - BACKING TO BE PROVIDED BY GENERAL CONTRACTOR
  - 3** AV WALL PLATE TYPE 1 LOCATION
    - QTY (1) DUAL GANG J-BOX MOUNTED AT 18" AFF WITH QTY (1) 1.25" EMT BROUGHT FROM J-BOX TO ACCESSIBLE CEILING - BY ELECTRICAL CONTRACTOR
    - QTY (1) QTY DUPLEX RECEPTACLE MOUNTED AT 18" AFF. TYPICAL CURRENT DRAW - CONVENIENCE - BY ELECTRICAL CONTRACTOR
    - QTY (TBD) DATA RECEPTACLE MOUNTED AT 18" AFF - BY DATA CONTRACTOR
  - 4** AV WALL PLATE TYPE 2 LOCATION
    - QTY (1) DUAL GANG J-BOX MOUNTED AT 42" AFF WITH QTY (1) 1.25" EMT BROUGHT FROM J-BOX TO ACCESSIBLE CEILING - BY ELECTRICAL CONTRACTOR
    - QTY (1) QTY DUPLEX RECEPTACLE MOUNTED AT 42" AFF. TYPICAL CURRENT DRAW - CONVENIENCE - BY ELECTRICAL CONTRACTOR
    - QTY (TBD) DATA RECEPTACLE MOUNTED AT 42" AFF - BY DATA CONTRACTOR
  - 5** AV KEYPAD CONTROLLER LOCATION
    - QTY (1) SINGLE GANG J-BOX MOUNTED AT 54" AFF WITH QTY (1) 1" EMT BROUGHT FROM J-BOX TO ACCESSIBLE CEILING
    - QTY (1) DATA CABLE BROUGHT INTO AV J-BOX - BY DATA CONTRACTOR
  - 6** AV TOUCH PANEL CONTROLLER LOCATION
    - QTY (1) DOUBLE GANG J-BOX MOUNTED AT 54" AFF WITH QTY (1) 1" EMT BROUGHT FROM J-BOX TO ACCESSIBLE CEILING
    - QTY (1) DATA CABLE BROUGHT INTO AV J-BOX - BY DATA CONTRACTOR
  - 7** AV EQUIPMENT RACK LOCATION
    - QTY (1) 12x24 NEMA FULL BOX MOUNTED AT 18" AFF WITH QTY (4) 2" EMT BROUGHT FROM PULL BOX TO ACCESSIBLE CEILING - BY ELECTRICAL CONTRACTOR
    - QTY (1) 120 VOLT QUAD OUTLET MOUNTED AT 18" AFF. TYPICAL CURRENT DRAW = 20 AMPS DEDICATED - BY ELECTRICAL CONTRACTOR
    - QTY (TBD) DATA RECEPTACLE MOUNTED AT 18" AFF - BY DATA CONTRACTOR
  - 8** CEILING PROJECTOR LOCATION
    - QTY (1) DUPLEX RECEPTACLE MOUNTED FLUSH INTO CEILING SURFACE. TYPICAL CURRENT DRAW 6 AMPS - BY ELECTRICAL CONTRACTOR
    - IN AN INSTANCE WHERE PROJECTOR WILL BE MOUNTED IN A HARD LID CEILING PROVIDE QTY (1) SINGLE GANG J-BOX MOUNTED FLUSH INTO CEILING SURFACE WITH QTY (1) 1.25" EMT BROUGHT FROM J-BOX TO ACCESSIBLE CEILING - BY ELECTRICAL CONTRACTOR
  - 9** CEILING PROJECTION SCREEN LOCATION
    - QTY (1) 120 WHIP WIRED TO THE INTERNAL J-BOX ON THE LEFT SIDE OF THE PROJECTION SCREEN. TYPICAL CURRENT DRAW 2 AMPS - BY ELECTRICAL CONTRACTOR
  - 10** AV POKE THRU
    - QTY (1) LEGRAND WIREMOLD EVOLUTION SERIES 8AT SERIES 8ATPx POKE-THRU WITH COVER - COLOR TO BE CHOSEN BY ARCHITECT. ALONG WITH THE INCLUDED ACCESSORIES ADD THE FOLLOWING ACCESSORIES: QTY (1) 8ACT6A, QTY (1) 1125CHA, QTY (1) 175CHA - BY ELECTRICAL CONTRACTOR
    - QTY (1) 1.25" EMT BROUGHT FROM POKE THROUGH TO ACCESSIBLE CEILING - BY ELECTRICAL CONTRACTOR
    - QTY (2) DUPLEX RECEPTACLE - BY ELECTRICAL CONTRACTOR
    - QTY (TBD) DATA CONNECTIVITY - BY DATA CONTRACTOR
  - 11** NON-AV POKE THRU
    - QTY (1) LEGRAND WIREMOLD AV3 SERIES AV3ATCx POKE-THRU WITH COVER - COLOR TO BE CHOSEN BY ARCHITECT. - BY ELECTRICAL CONTRACTOR
    - QTY (1) 1.25" EMT BROUGHT FROM POKE THROUGH TO ACCESSIBLE CEILING - BY ELECTRICAL CONTRACTOR
    - QTY (1) DUPLEX RECEPTACLE - BY ELECTRICAL CONTRACTOR
    - QTY (TBD) DATA CONNECTIVITY - BY DATA CONTRACTOR
  - 12** AV FLOOR BOX
    - QTY (1) LEGRAND WIREMOLD EVOLUTION SERIES EFB8S-OG ON GRADE FLOOR BOX. ALONG WITH THE INCLUDED ACCESSORIES ADD THE FOLLOWING ACCESSORIES: QTY (1) EFB8S-22GMB MOUNTING BRACKET, QTY (1) EFB810CTCx COVER - COLOR TO BE CHOSEN BY THE ARCHITECT - BY ELECTRICAL CONTRACTOR
    - QTY (1) 1.25" EMT BROUGHT FROM POKE THROUGH TO ACCESSIBLE CEILING - BY ELECTRICAL CONTRACTOR
    - QTY (2) DUPLEX RECEPTACLE - BY ELECTRICAL CONTRACTOR
  - 13** NON-AV FLOOR BOX
    - QTY (1) LEGRAND WIREMOLD RATCHET-PRO SERIES RPNFB ON GRADE FLOOR BOX. ALONG WITH THE INCLUDED ACCESSORIES ADD THE FOLLOWING ACCESSORIES: QTY (1) RPAVACTCx COVER - COLOR TO BE CHOSEN BY THE ARCHITECT - BY ELECTRICAL CONTRACTOR
    - QTY (1) 1.25" EMT BROUGHT FROM POKE THROUGH TO ACCESSIBLE CEILING - BY ELECTRICAL CONTRACTOR
    - QTY (1) DUPLEX RECEPTACLE - BY ELECTRICAL CONTRACTOR
  - 14** AV CAMERA LOCATION
    - QTY (1) SINGLE GANG J-BOX MOUNTED AT 96" AFF WITH QTY (1) 1.25" EMT BROUGHT FROM J-BOX TO ACCESSIBLE CEILING - BY ELECTRICAL CONTRACTOR
    - QTY (1) DATA CABLE BROUGHT INTO AV J-BOX - BY DATA CONTRACTOR
  - 15** TYPICAL POLE MOUNTED LCD TV LOCATION
    - QTY (1) QTY DUPLEX RECEPTACLE MOUNTED ON POLE. TYPICAL CURRENT DRAW 3 AMPS - BY ELECTRICAL CONTRACTOR
    - QTY (1) DATA RECEPTACLE MOUNTED IN SURFACE MOUNT BOX IN CEILING - DATA CABLING AND FACE PLATE - BY DATA CONTRACTOR
    - QTY (1) CATV RECEPTACLE MOUNTED IN SURFACE MOUNT BOX IN CEILING - CATV CABLING AND FACE PLATE - BY CATV CONTRACTOR

10-01-14 DESIGN DEVELOPMENT  
 08-20-14 SCHEMATIC DESIGN  
 ISSUES:

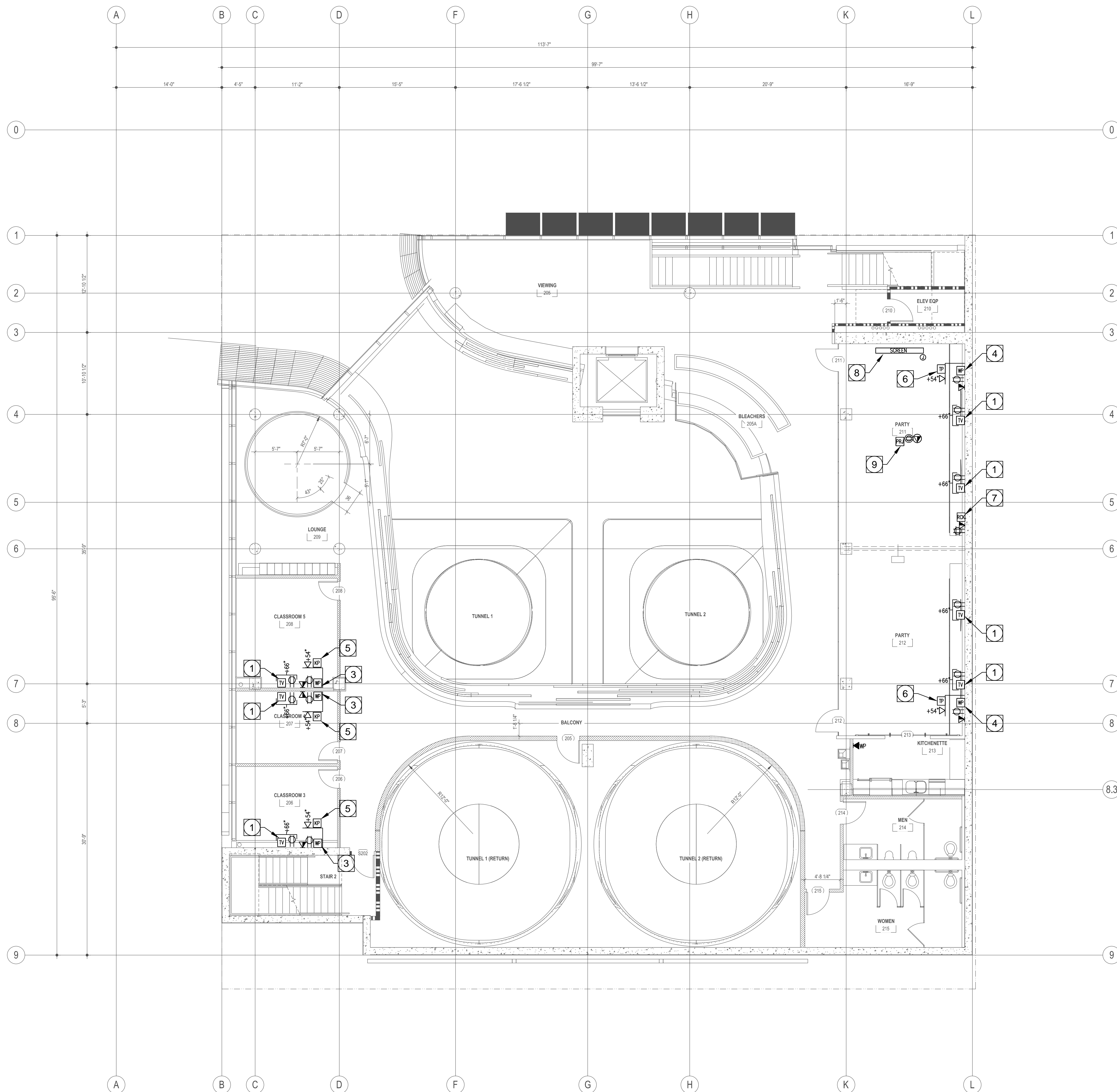
PRELIMINARY  
 NOT FOR  
 CONSTRUCTION

PROJECT NO: \_\_\_\_\_  
 543200  
 FILENAME: \_\_\_\_\_  
 DRAWN BY: \_\_\_\_\_ CHECKED BY: \_\_\_\_\_  
 KP  
 PLOT DATE: \_\_\_\_\_  
 10-01-14  
 TITLE: \_\_\_\_\_

AUDIO VISUAL  
 1ST FLOOR LAYOUT

DRAWING NO: \_\_\_\_\_

ALL IDEAS, DESIGN, ARRANGEMENTS AND PLANS INDICATED OR REPRESENTED BY THIS DRAWING ARE OWNED BY, AND THE PROPERTY OF CARRIER JOHNSON + CULTURE AND WERE CREATED, EVOLVED AND DEVELOPED FOR USE ON, AND IN CONNECTION WITH THIS PROJECT. NONE OF SUCH IDEAS, DESIGN, ARRANGEMENTS, OR PLANS SHALL BE USED BY, OR DISCLOSED TO ANY PERSON, FIRM, OR CORPORATION FOR ANY PURPOSE WHATSOEVER WITHOUT THE WRITTEN PERMISSION OF CARRIER JOHNSON + CULTURE. FILING THESE DRAWINGS OR SPECIFICATIONS WITH ANY PUBLIC AGENCY IS NOT A PUBLICATION OF SAME. NO COPYING, REPRODUCTION OR USE THEREOF IS PERMISSIBLE WITHOUT THE CONSENT OF CARRIER JOHNSON + CULTURE.

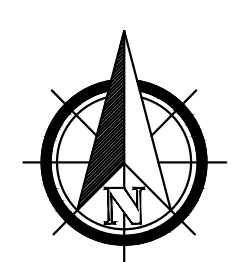
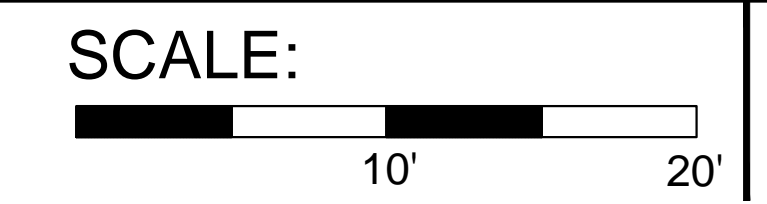


**KEY NOTES:**

\*\*\* ALL KEY NOTE DIMENSIONS ARE UNLESS OTHERWISE NOTED ON PLANS\*\*\*

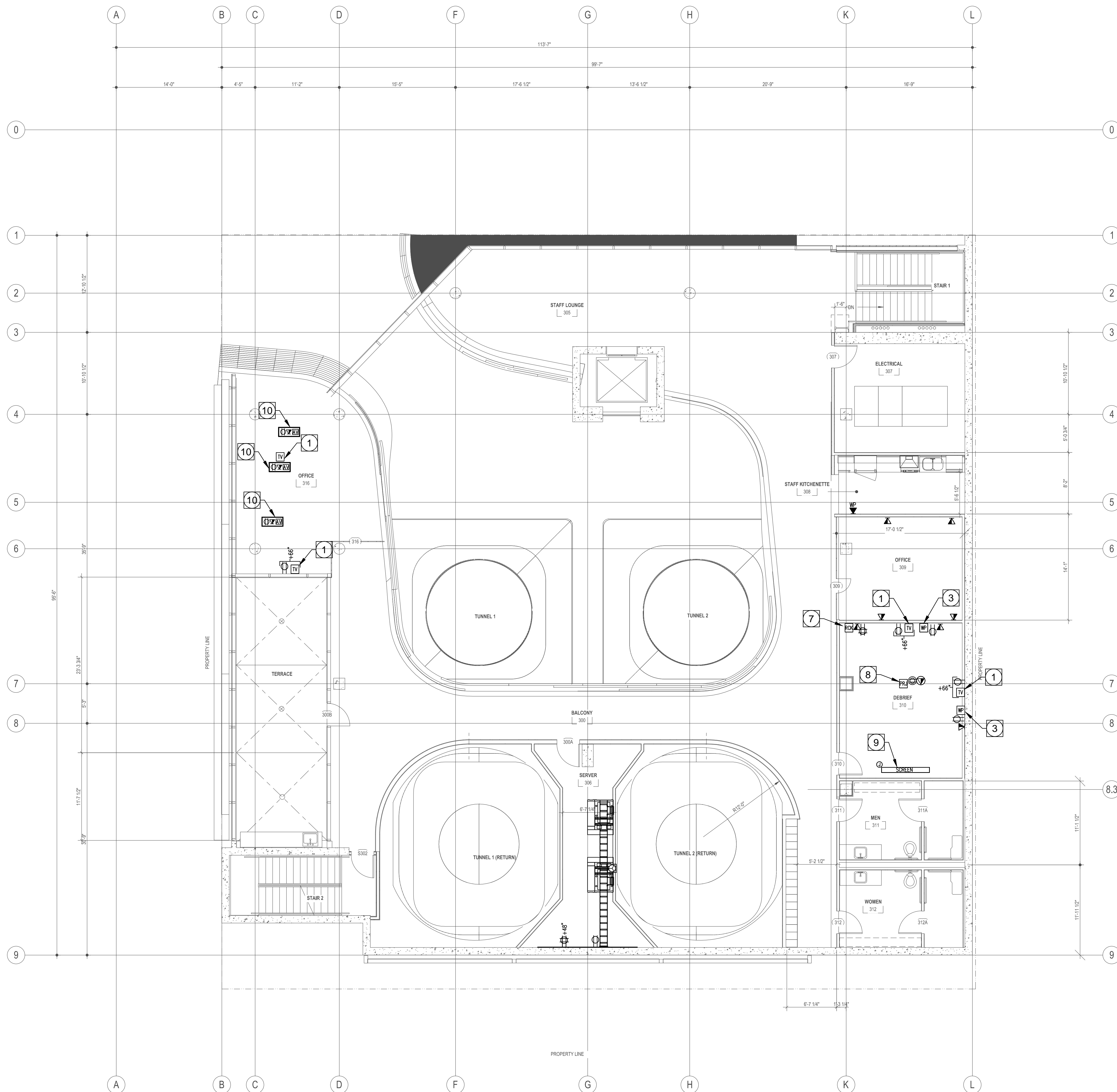
- 1** TYPICAL LCD TV LOCATION
  - QTY (1) SINGLE GANG J-BOX MOUNTED AT 66" AFF WITH QTY (1) 1.25" EMT BROUGHT FROM J-BOX TO ACCESSIBLE CEILING BY ELECTRICAL CONTRACTOR
  - QTY (1) QTY DUPLEX RECEPTACLE MOUNTED AT 66" AFF. TYPICAL CURRENT DRAW 3 AMPS - BY ELECTRICAL CONTRACTOR
  - QTY (1) DATA RECEPTACLE MOUNTED AT 66" AFF - DATA CABLING AND FACE PLATE - BY DATA CONTRACTOR
  - QTY (1) CATV RECEPTACLE MOUNTED AT 66" AFF - CATV CABLING AND FACE PLATE - BY CATV CONTRACTOR
  - BACKING TO BE PROVIDED BY GENERAL CONTRACTOR
- 2** INTERACTIVE LCD TV LOCATION
  - QTY (1) SINGLE GANG J-BOX WITH QTY (1) 1.25" EMT BROUGHT FROM J-BOX TO ACCESSIBLE CEILING BY ELECTRICAL CONTRACTOR
  - QTY (1) QTY DUPLEX RECEPTACLE. TYPICAL CURRENT DRAW 3 AMPS - BY ELECTRICAL CONTRACTOR
  - QTY (2) DATA RECEPTACLE - DATA CABLING AND FACE PLATE - BY DATA CONTRACTOR
  - BACKING TO BE PROVIDED BY GENERAL CONTRACTOR
- 3** AV WALL PLATE TYPE 1 LOCATION
  - QTY (1) DUAL GANG J-BOX MOUNTED AT 18" AFF WITH QTY (1) 1.25" EMT BROUGHT FROM J-BOX TO ACCESSIBLE CEILING - BY ELECTRICAL CONTRACTOR
  - QTY (1) QTY DUPLEX RECEPTACLE MOUNTED AT 18" AFF. TYPICAL CURRENT DRAW - CONVENIENCE - BY ELECTRICAL CONTRACTOR
  - QTY (TBD) DATA RECEPTACLE MOUNTED AT 18" AFF - BY DATA CONTRACTOR
- 4** AV WALL PLATE TYPE 2 LOCATION
  - QTY (1) DUAL GANG J-BOX MOUNTED AT 42" AFF WITH QTY (1) 1.25" EMT BROUGHT FROM J-BOX TO ACCESSIBLE CEILING - BY ELECTRICAL CONTRACTOR
  - QTY (1) QTY DUPLEX RECEPTACLE MOUNTED AT 42" AFF. TYPICAL CURRENT DRAW - CONVENIENCE - BY ELECTRICAL CONTRACTOR
  - QTY (TBD) DATA RECEPTACLE MOUNTED AT 42" AFF - BY DATA CONTRACTOR
- 5** AV KEYPAD CONTROLLER LOCATION
  - QTY (1) SINGLE GANG J-BOX MOUNTED AT 54" AFF WITH QTY (1) 1" EMT BROUGHT FROM J-BOX TO ACCESSIBLE CEILING
  - QTY (1) DATA CABLE BROUGHT INTO AV J-BOX - BY DATA CONTRACTOR
- 6** AV TOUCH PANEL CONTROLLER LOCATION
  - QTY (1) DOUBLE GANG J-BOX MOUNTED AT 54" AFF WITH QTY (1) 1" EMT BROUGHT FROM J-BOX TO ACCESSIBLE CEILING
  - QTY (1) DATA CABLE BROUGHT INTO AV J-BOX - BY DATA CONTRACTOR
- 7** AV EQUIPMENT RACK LOCATION
  - QTY (1) 12x12x4 NEMA FULL BOX MOUNTED AT 18" AFF WITH QTY (4) 2" EMT BROUGHT FROM PULL BOX TO ACCESSIBLE CEILING - BY ELECTRICAL CONTRACTOR
  - QTY (1) 120 VOLT QUAD OUTLET MOUNTED AT 18" AFF. TYPICAL CURRENT DRAW = 20 AMPS DEDICATED - BY ELECTRICAL CONTRACTOR
  - QTY (TBD) DATA RECEPTACLE MOUNTED AT 18" AFF - BY DATA CONTRACTOR
- 8** CEILING PROJECTOR LOCATION
  - QTY (1) DUPLEX RECEPTACLE MOUNTED FLUSH INTO CEILING SURFACE. TYPICAL CURRENT DRAW 6 AMPS - BY ELECTRICAL CONTRACTOR
  - IN AN INSTANCE WHERE PROJECTOR WILL BE MOUNTED IN A HARD LID CEILING PROVIDE QTY (1) SINGLE GANG J-BOX MOUNTED FLUSH INTO CEILING SURFACE WITH QTY (1) 1.25" EMT BROUGHT FROM J-BOX TO ACCESSIBLE CEILING - BY ELECTRICAL CONTRACTOR
- 9** CEILING PROJECTION SCREEN LOCATION
  - QTY (1) 120 WHIP WIRED TO THE INTERNAL J-BOX ON THE LEFT SIDE OF THE PROJECTION SCREEN. TYPICAL CURRENT DRAW 2 AMPS - BY ELECTRICAL CONTRACTOR
- 10** AV POKE THRU
  - QTY (1) LEGRAND WIREMOLD EVOLUTION SERIES 8AT SERIES 8ATPxK POKE-THRU WITH COVER - COLOR TO BE CHOSEN BY ARCHITECT. ALONG WITH THE INCLUDED ACCESSORIES ADD THE FOLLOWING ACCESSORIES: QTY (1) 8ACT6A, QTY (1) 1125CHA, QTY (1) 175CHA - BY ELECTRICAL CONTRACTOR
  - QTY (1) 1.25" EMT BROUGHT FROM POKE THROUGH TO ACCESSIBLE CEILING - BY ELECTRICAL CONTRACTOR
  - QTY (2) DUPLEX RECEPTACLE - BY ELECTRICAL CONTRACTOR
  - QTY (TBD) DATA CONNECTIVITY - BY DATA CONTRACTOR
- 11** NON-AV POKE THRU
  - QTY (1) LEGRAND WIREMOLD AV3 SERIES AV3ATcKxK POKE-THRU WITH COVER - COLOR TO BE CHOSEN BY ARCHITECT. - BY ELECTRICAL CONTRACTOR
  - QTY (1) 1.25" EMT BROUGHT FROM POKE THROUGH TO ACCESSIBLE CEILING - BY ELECTRICAL CONTRACTOR
  - QTY (1) DUPLEX RECEPTACLE - BY ELECTRICAL CONTRACTOR
  - QTY (TBD) DATA CONNECTIVITY - BY DATA CONTRACTOR
- 12** AV FLOOR BOX
  - QTY (1) LEGRAND WIREMOLD EVOLUTION SERIES EFBS-OG ON GRADE FLOOR BOX. ALONG WITH THE INCLUDED ACCESSORIES ADD THE FOLLOWING ACCESSORIES: QTY (1) EFBS-22GMB MOUNTING BRACKET, QTY (1) EFBS10CTCxx COVER - COLOR TO BE CHOSEN BY THE ARCHITECT - BY ELECTRICAL CONTRACTOR
  - QTY (1) 1.25" EMT BROUGHT FROM POKE THROUGH TO ACCESSIBLE CEILING - BY ELECTRICAL CONTRACTOR
  - QTY (2) DUPLEX RECEPTACLE - BY ELECTRICAL CONTRACTOR
- 13** NON-AV FLOOR BOX
  - QTY (1) LEGRAND WIREMOLD RATCHET-PRO SERIES RPNFB ON GRADE FLOOR BOX. ALONG WITH THE INCLUDED ACCESSORIES ADD THE FOLLOWING ACCESSORIES: QTY (1) RPAVCTCxx COVER - COLOR TO BE CHOSEN BY THE ARCHITECT - BY ELECTRICAL CONTRACTOR
  - QTY (1) 1.25" EMT BROUGHT FROM POKE THROUGH TO ACCESSIBLE CEILING - BY ELECTRICAL CONTRACTOR
  - QTY (1) DUPLEX RECEPTACLE - BY ELECTRICAL CONTRACTOR
- 14** AV CAMERA LOCATION
  - QTY (1) SINGLE GANG J-BOX MOUNTED AT 96" AFF WITH QTY (1) 1.25" EMT BROUGHT FROM J-BOX TO ACCESSIBLE CEILING - BY ELECTRICAL CONTRACTOR
  - QTY (1) DATA CABLE BROUGHT INTO AV J-BOX - BY DATA CONTRACTOR

**2ND FLOOR  
AUDIO VISUAL EQUIPMENT LAYOUT**



**1**

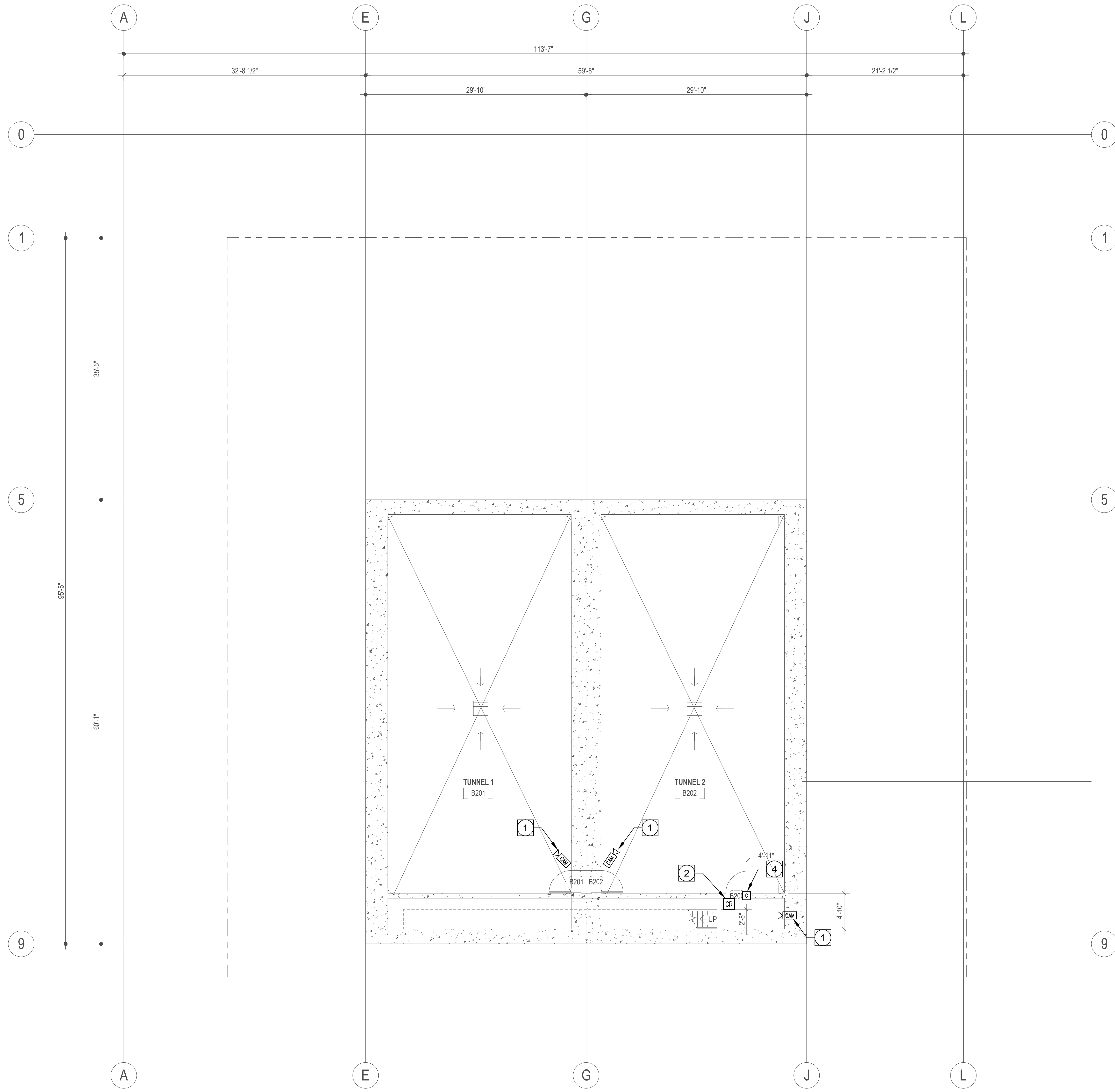
ALL IDEAS, DESIGN, ARRANGEMENTS AND PLANS INDICATED OR REPRESENTED BY THIS DRAWING ARE OWNED BY, AND THE PROPERTY OF CARRIER JOHNSON + CULTURE AND WERE CREATED, EVOLVED AND DEVELOPED FOR USE ON, AND IN CONNECTION WITH THIS PROJECT. NONE OF SUCH IDEAS, DESIGN, ARRANGEMENTS, OR PLANS SHALL BE USED BY, OR DISCLOSED TO ANY PERSON, FIRM, OR CORPORATION FOR ANY PURPOSE WHATSOEVER WITHOUT THE WRITTEN PERMISSION OF CARRIER JOHNSON + CULTURE. FILING THESE DRAWINGS OR SPECIFICATIONS WITH ANY PUBLIC AGENCY IS NOT A PUBLICATION OF SAME. NO COPYING, REPRODUCTION OR USE THEREOF IS PERMISSIBLE WITHOUT THE CONSENT OF CARRIER JOHNSON + CULTURE.



**KEY NOTES:**

- \*\*\* ALL KEY NOTE DIMENSIONS ARE UNLESS OTHERWISE NOTED ON PLANS\*\*\*
- 1 TYPICAL LCD TV LOCATION
    - QTY (1) SINGLE GANG J-BOX MOUNTED AT 66" AFF WITH QTY (1) 1.25' EMT BROUGHT FROM J-BOX TO ACCESSIBLE CEILING BY ELECTRICAL CONTRACTOR
    - QTY (1) QTY DUPLEX RECEPTACLE MOUNTED AT 66" AFF. TYPICAL CURRENT DRAW 3 AMPS - BY ELECTRICAL CONTRACTOR
    - QTY (1) DATA RECEPTACLE MOUNTED AT 66" AFF - DATA CABLING AND FACE PLATE - BY DATA CONTRACTOR
    - QTY (1) CATV RECEPTACLE MOUNTED AT 66" AFF - CATV CABLING AND FACE PLATE - BY CATV CONTRACTOR
    - BACKING TO BE PROVIDED BY GENERAL CONTRACTOR
  - 2 INTERACTIVE LCD TV LOCATION
    - QTY (1) SINGLE GANG J-BOX WITH QTY (1) 1.25' EMT BROUGHT FROM J-BOX TO ACCESSIBLE CEILING BY ELECTRICAL CONTRACTOR
    - QTY (1) QTY DUPLEX RECEPTACLE. TYPICAL CURRENT DRAW 3 AMPS - BY ELECTRICAL CONTRACTOR
    - QTY (2) DATA RECEPTACLE - DATA CABLING AND FACE PLATE - BY DATA CONTRACTOR
    - BACKING TO BE PROVIDED BY GENERAL CONTRACTOR
  - 3 AV WALL PLATE TYPE 1 LOCATION
    - QTY (1) DUAL GANG J-BOX MOUNTED AT 18" AFF WITH QTY (1) 1.25' EMT BROUGHT FROM J-BOX TO ACCESSIBLE CEILING - BY ELECTRICAL CONTRACTOR
    - QTY (1) QTY DUPLEX RECEPTACLE MOUNTED AT 18" AFF. TYPICAL CURRENT DRAW - CONVENIENCE - BY ELECTRICAL CONTRACTOR
    - QTY (TBD) DATA RECEPTACLE MOUNTED AT 18" AFF - BY DATA CONTRACTOR
  - 4 AV WALL PLATE TYPE 2 LOCATION
    - QTY (1) DUAL GANG J-BOX MOUNTED AT 42" AFF WITH QTY (1) 1.25' EMT BROUGHT FROM J-BOX TO ACCESSIBLE CEILING - BY ELECTRICAL CONTRACTOR
    - QTY (1) QTY DUPLEX RECEPTACLE MOUNTED AT 42" AFF. TYPICAL CURRENT DRAW - CONVENIENCE - BY ELECTRICAL CONTRACTOR
    - QTY (TBD) DATA RECEPTACLE MOUNTED AT 42" AFF - BY DATA CONTRACTOR
  - 5 AV KEYPAD CONTROLLER LOCATION
    - QTY (1) SINGLE GANG J-BOX MOUNTED AT 54" AFF WITH QTY (1) 1" EMT BROUGHT FROM J-BOX TO ACCESSIBLE CEILING
    - QTY (1) DATA CABLE BROUGHT INTO AV J-BOX - BY DATA CONTRACTOR
  - 6 AV TOUCH PANEL CONTROLLER LOCATION
    - QTY (1) DOUBLE GANG J-BOX MOUNTED AT 54" AFF WITH QTY (1) 1" EMT BROUGHT FROM J-BOX TO ACCESSIBLE CEILING
    - QTY (1) DATA CABLE BROUGHT INTO AV J-BOX - BY DATA CONTRACTOR
  - 7 AV EQUIPMENT RACK LOCATION
    - QTY (1) 12U NEMA FULL BOX MOUNTED AT 18" AFF WITH QTY (4) 2" EMT BROUGHT FROM PULL BOX TO ACCESSIBLE CEILING - BY ELECTRICAL CONTRACTOR
    - QTY (1) 120 VOLT QUAD OUTLET MOUNTED AT 18" AFF. TYPICAL CURRENT DRAW = 20 AMPS DEDICATED - BY ELECTRICAL CONTRACTOR
    - QTY (TBD) DATA RECEPTACLE MOUNTED AT 18" AFF - BY DATA CONTRACTOR
  - 8 CEILING PROJECTOR LOCATION
    - QTY (1) DUPLEX RECEPTACLE MOUNTED FLUSH INTO CEILING SURFACE. TYPICAL CURRENT DRAW 6 AMPS - BY ELECTRICAL CONTRACTOR
    - IN AN INSTANCE WHERE PROJECTOR WILL BE MOUNTED IN A HARD LID CEILING PROVIDE QTY (1) SINGLE GANG J-BOX MOUNTED FLUSH INTO CEILING SURFACE WITH QTY (1) 1.25' EMT BROUGHT FROM J-BOX TO ACCESSIBLE CEILING - BY ELECTRICAL CONTRACTOR
  - 9 CEILING PROJECTION SCREEN LOCATION
    - QTY (1) 120 WHIP WIRED TO THE INTERNAL J-BOX ON THE LEFT SIDE OF THE PROJECTION SCREEN. TYPICAL CURRENT DRAW 2 AMPS - BY ELECTRICAL CONTRACTOR
  - 10 AV POKE THRU
    - QTY (1) LEGRAND WIREMOLD EVOLUTION SERIES 8AT SERIES 8ATPxX POKE-THRU WITH COVER - COLOR TO BE CHOSEN BY ARCHITECT. ALONG WITH THE INCLUDED ACCESSORIES ADD THE FOLLOWING ACCESSORIES: QTY (1) 8ACT6A, QTY (1) 1125CHA, QTY (1) 175CHA - BY ELECTRICAL CONTRACTOR
    - QTY (1) 1.25' EMT BROUGHT FROM POKE THROUGH TO ACCESSIBLE CEILING - BY ELECTRICAL CONTRACTOR
    - QTY (2) DUPLEX RECEPTACLE - BY ELECTRICAL CONTRACTOR
    - QTY (TBD) DATA CONNECTIVITY - BY DATA CONTRACTOR
  - 11 NON-AV POKE THRU
    - QTY (1) LEGRAND WIREMOLD AV3 SERIES AV3ATCxX POKE-THRU WITH COVER - COLOR TO BE CHOSEN BY ARCHITECT. - BY ELECTRICAL CONTRACTOR
    - QTY (1) 1.25' EMT BROUGHT FROM POKE THROUGH TO ACCESSIBLE CEILING - BY ELECTRICAL CONTRACTOR
    - QTY (1) DUPLEX RECEPTACLE - BY ELECTRICAL CONTRACTOR
    - QTY (TBD) DATA CONNECTIVITY - BY DATA CONTRACTOR
  - 12 AV FLOOR BOX
    - QTY (1) LEGRAND WIREMOLD EVOLUTION SERIES EFBS-OG ON GRADE FLOOR BOX. ALONG WITH THE INCLUDED ACCESSORIES ADD THE FOLLOWING ACCESSORIES: QTY (1) EFBS-22GMB MOUNTING BRACKET, QTY (1) EFBS10CTCxX COVER - COLOR TO BE CHOSEN BY THE ARCHITECT - BY ELECTRICAL CONTRACTOR
    - QTY (1) 1.25' EMT BROUGHT FROM POKE THROUGH TO ACCESSIBLE CEILING - BY ELECTRICAL CONTRACTOR
    - QTY (2) DUPLEX RECEPTACLE - BY ELECTRICAL CONTRACTOR
  - 13 NON-AV FLOOR BOX
    - QTY (1) LEGRAND WIREMOLD RATCHET-PRO SERIES RPNFB ON GRADE FLOOR BOX. ALONG WITH THE INCLUDED ACCESSORIES ADD THE FOLLOWING ACCESSORIES: QTY (1) RPAV0CTCxX COVER - COLOR TO BE CHOSEN BY THE ARCHITECT - BY ELECTRICAL CONTRACTOR
    - QTY (1) 1.25' EMT BROUGHT FROM POKE THROUGH TO ACCESSIBLE CEILING - BY ELECTRICAL CONTRACTOR
    - QTY (1) DUPLEX RECEPTACLE - BY ELECTRICAL CONTRACTOR
  - 14 AV CAMERA LOCATION
    - QTY (1) SINGLE GANG J-BOX MOUNTED AT 96" AFF WITH QTY (1) 1.25' EMT BROUGHT FROM J-BOX TO ACCESSIBLE CEILING - BY ELECTRICAL CONTRACTOR
    - QTY (1) DATA CABLE BROUGHT INTO AV J-BOX - BY DATA CONTRACTOR

ALL IDEAS, DESIGN, ARRANGEMENTS AND PLANS INDICATED OR REPRESENTED BY THIS DRAWING ARE OWNED BY, AND THE PROPERTY OF CARRIER JOHNSON + CULTURE AND WERE CREATED, EVOLVED AND DEVELOPED FOR USE ON, AND IN CONNECTION WITH THIS PROJECT. NONE OF SUCH IDEAS, DESIGN, ARRANGEMENTS, OR PLANS SHALL BE USED BY, OR DISCLOSED TO ANY PERSON, FIRM, OR CORPORATION FOR ANY PURPOSE WHATSOEVER WITHOUT THE WRITTEN PERMISSION OF CARRIER JOHNSON + CULTURE. FILING THESE DRAWINGS OR SPECIFICATIONS WITH ANY PUBLIC AGENCY IS NOT A PUBLICATION OF SAME. NO COPYING, REPRODUCTION OR USE THEREOF IS PERMISSIBLE WITHOUT THE CONSENT OF CARRIER JOHNSON + CULTURE.



**KEY NOTES:**

\*\*\* ALL KEY NOTE DIMENSIONS ARE UNLESS OTHERWISE NOTED ON PLANS\*\*\*

- 1 IP CAMERA LOCATION
  - QTY (1) SINGLE GANG J-BOX MOUNTED AT 96" AFF WITH QTY (1) 1" FLEX BROUGHT FROM J-BOX TO ACCESSIBLE CEILING - BY ELECTRICAL CONTRACTOR
  - QTY (1) DATA CABLE BROUGHT INTO J-BOX - BY DATA CONTRACTOR
- 2 CARD READER LOCATION
  - QTY (1) SINGLE GANG J-BOX MOUNTED AT 48" AFF WITH QTY (1) 1" FLEX BROUGHT FROM J-BOX TO PULL BOX ABOVE DOOR - BY ELECTRICAL CONTRACTOR
  - QTY (1) COMPOSITE CABLE
- 3 ALARM KEY PAD LOCATION
  - QTY (1) SINGLE GANG J-BOX MOUNTED AT 48" AFF WITH QTY (1) 1" FLEX BROUGHT FROM J-BOX TO ACCESSIBLE CEILING - BY ELECTRICAL CONTRACTOR
  - QTY (1) 22/4 WIRE
- 4 DOOR CONTACT LOCATION
  - MOUNTED IN DOOR FRAME WITH QTY (1) 1" FLEX BROUGHT FROM J-BOX TO PULL BOX ABOVE DOOR - BY ELECTRICAL CONTRACTOR (SEE DOOR DETAIL)
  - QTY (1) 22/4 WIRE
- 5 IR MOTION SENSOR LOCATION
  - QTY (1) SINGLE GANG J-BOX MOUNTED AT 96" AFF WITH QTY (1) 1" FLEX BROUGHT FROM J-BOX TO ACCESSIBLE CEILING - BY ELECTRICAL CONTRACTOR
  - QTY (1) 22/4 WIRE
- 6 ELEVATOR CAMERA
  - MOUNTED INSIDE ELEVATOR CAB - BY OTHERS
- 7 ELEVATOR CARD READER
  - MOUNTED INSIDE ELEVATOR CAB - BY OTHERS

**carrierjohnson + CULTURE**  
 architecture + environments + brand strategy + graphics  
 1301 third avenue, san diego ca 92101  
 phone 619.239.2363 fax 619.239.6227

**AIRBORNE SAN DIEGO**  
 1401 IMPERIAL AVENUE  
 SAN DIEGO, CA 92101

10-01-14 DESIGN DEVELOPMENT  
 08-20-14 SCHEMATIC DESIGN  
 ISSUES:

PRELIMINARY  
 NOT FOR  
 CONSTRUCTION

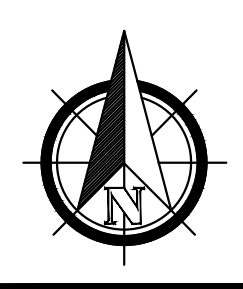
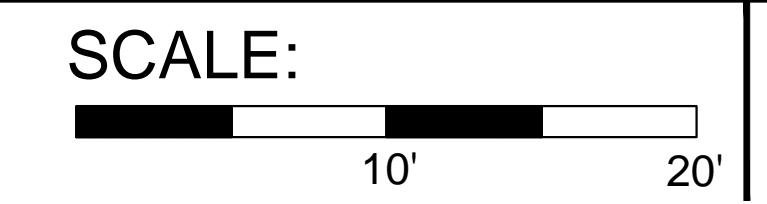
PROJECT NO: \_\_\_\_\_  
 543210  
 FILENAME: \_\_\_\_\_  
 DRAWN BY: \_\_\_\_\_ CHECKED BY: \_\_\_\_\_  
 KP  
 PLOT DATE: \_\_\_\_\_  
 10-01-14  
 TITLE: \_\_\_\_\_

ACCESS CONTROL  
 AND SECURITY  
 LEVEL B2 LAYOUT

DRAWING NO: \_\_\_\_\_

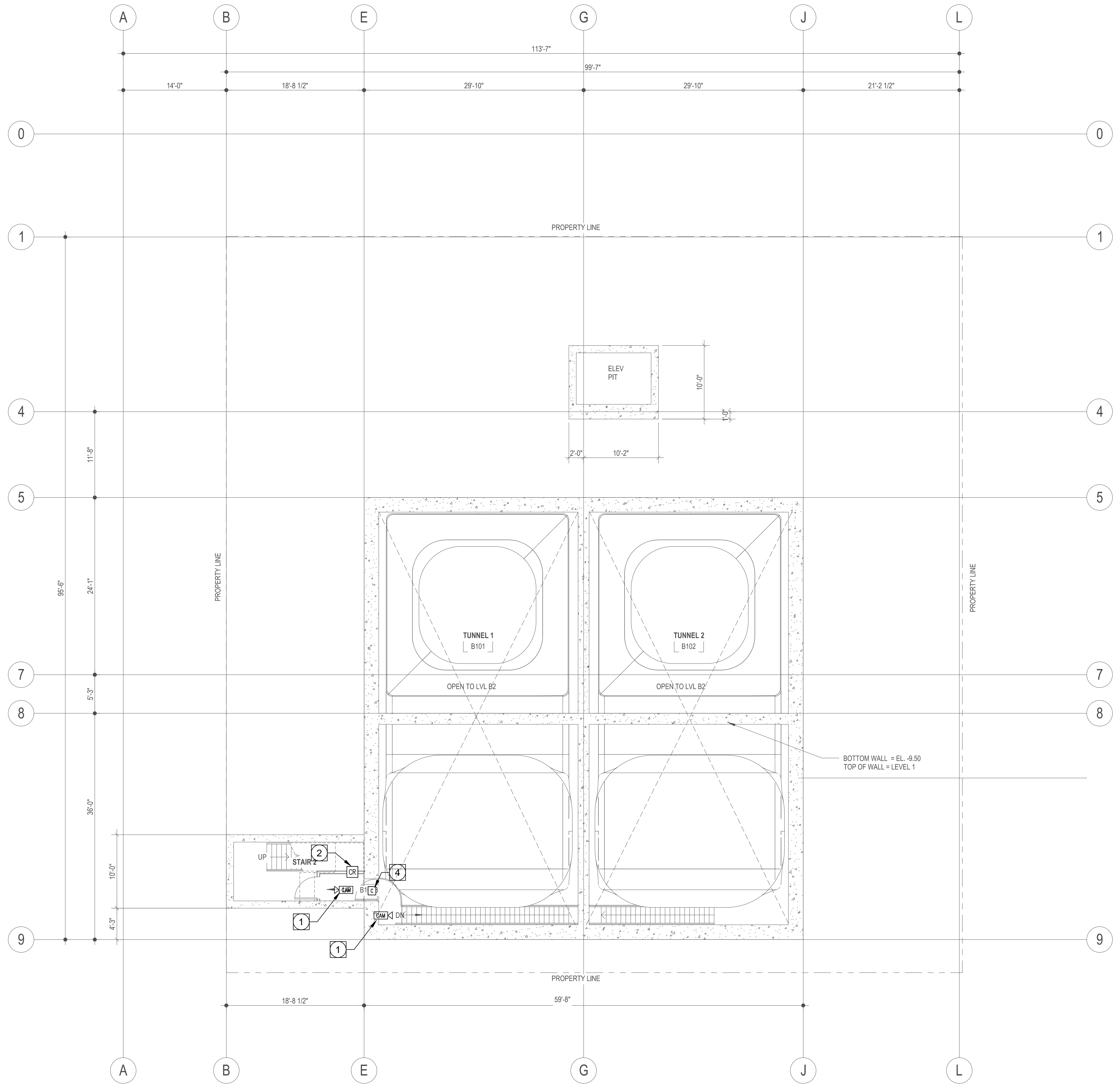
**SEC 1.0.01**

**LEVEL B2  
 ACCESS CONTROL AND SECURITY EQUIPMENT LAYOUT**



**1**

ALL IDEAS, DESIGN, ARRANGEMENTS AND PLANS INDICATED OR REPRESENTED BY THIS DRAWING ARE OWNED BY, AND THE PROPERTY OF CARRIER JOHNSON + CULTURE AND WERE CREATED, EVOLVED AND DEVELOPED FOR USE ON, AND IN CONNECTION WITH THIS PROJECT. NONE OF SUCH IDEAS, DESIGN, ARRANGEMENTS, OR PLANS SHALL BE USED BY, OR DISCLOSED TO ANY PERSON, FIRM, OR CORPORATION FOR ANY PURPOSE WHATSOEVER WITHOUT THE WRITTEN PERMISSION OF CARRIER JOHNSON + CULTURE. FILING THESE DRAWINGS OR SPECIFICATIONS WITH ANY PUBLIC AGENCY IS NOT A PUBLICATION OF SAME. NO COPYING, REPRODUCTION OR USE THEREOF IS PERMISSIBLE WITHOUT THE CONSENT OF CARRIER JOHNSON + CULTURE.



**KEY NOTES:**

\*\*\* ALL KEY NOTE DIMENSIONS ARE UNLESS OTHER WISE NOTED ON PLANS\*\*\*

- 1 IP CAMERA LOCATION
  - QTY (1) SINGLE GANG J-BOX MOUNTED AT 96" AFF WITH QTY (1) 1" FLEX BROUGHT FROM J-BOX TO ACCESSIBLE CEILING - BY ELECTRICAL CONTRACTOR
  - QTY (1) DATA CABLE BROUGHT INTO J-BOX - BY DATA CONTRACTOR
- 2 CARD READER LOCATION
  - QTY (1) SINGLE GANG J-BOX MOUNTED AT 48" AFF WITH QTY (1) 1" FLEX BROUGHT FROM J-BOX TO PULL BOX ABOVE DOOR - BY ELECTRICAL CONTRACTOR
  - QTY (1) COMPOSITE CABLE
- 3 ALARM KEY PAD LOCATION
  - QTY (1) SINGLE GANG J-BOX MOUNTED AT 48" AFF WITH QTY (1) 1" FLEX BROUGHT FROM J-BOX TO ACCESSIBLE CEILING - BY ELECTRICAL CONTRACTOR
  - QTY (1) 22/4 WIRE
- 4 DOOR CONTACT LOCATION
  - MOUNTED IN DOOR FRAME WITH QTY (1) 1" FLEX BROUGHT FROM J-BOX TO PULL BOX ABOVE DOOR - BY ELECTRICAL CONTRACTOR (SEE DOOR DETAIL)
  - QTY (1) 22/4 WIRE
- 5 IR MOTION SENSOR LOCATION
  - QTY (1) SINGLE GANG J-BOX MOUNTED AT 96" AFF WITH QTY (1) 1" FLEX BROUGHT FROM J-BOX TO ACCESSIBLE CEILING - BY ELECTRICAL CONTRACTOR
  - QTY (1) 22/4 WIRE
- 6 ELEVATOR CAMERA
  - MOUNTED INSIDE ELEVATOR CAB - BY OTHERS
- 7 ELEVATOR CARD READER
  - MOUNTED INSIDE ELEVATOR CAB - BY OTHERS

**carrierjohnson + CULTURE**  
 architecture + environments + brand strategy + graphics  
 1301 third avenue, san diego ca 92101  
 phone 619.239.2363 fax 619.239.6227

**AIRBORNE SAN DIEGO**  
 1401 IMPERIAL AVENUE  
 SAN DIEGO, CA 92101

10-01-14 DESIGN DEVELOPMENT  
 08-20-14 SCHEMATIC DESIGN  
 ISSUES:

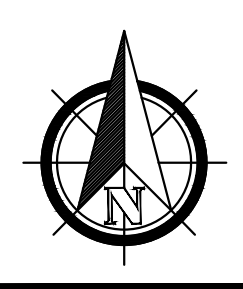
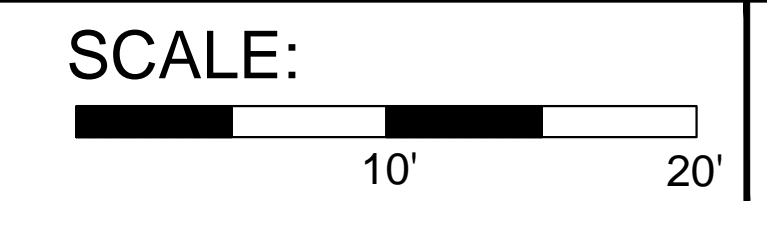
PRELIMINARY  
 NOT FOR  
 CONSTRUCTION

PROJECT NO: \_\_\_\_\_  
 543210  
 FILENAME: \_\_\_\_\_  
 DRAWN BY: \_\_\_\_\_ CHECKED BY: \_\_\_\_\_  
 KP  
 PLOT DATE: \_\_\_\_\_  
 10-01-14  
 TITLE: \_\_\_\_\_

ACCESS CONTROL  
 AND SECURITY  
 LEVEL B1 LAYOUT

DRAWING NO: \_\_\_\_\_

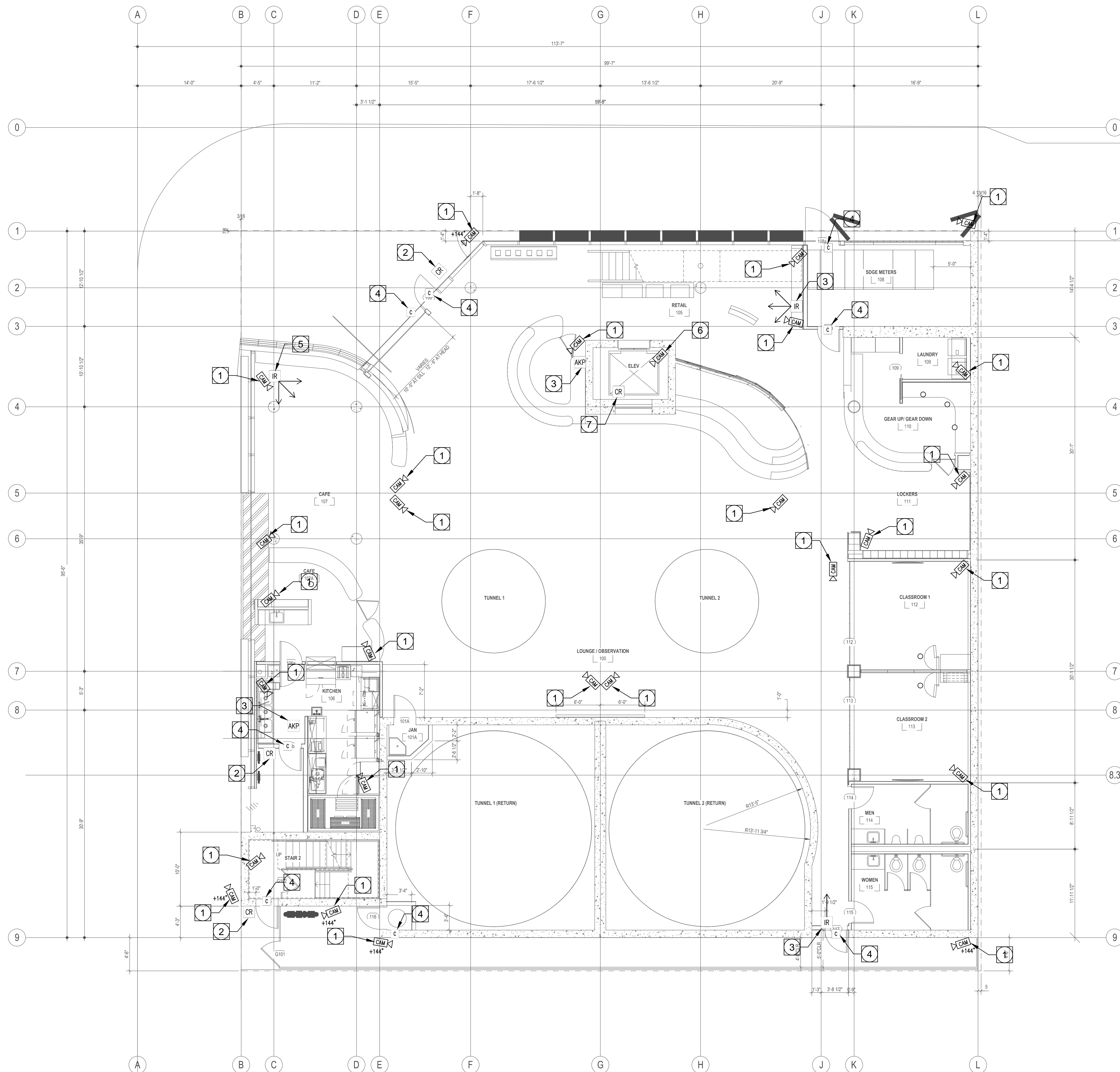
**LEVEL B1**  
**ACCESS CONTROL AND SECURITY EQUIPMENT LAYOUT**



**1**

**SEC 1.0.02**

ALL IDEAS, DESIGN, ARRANGEMENTS AND PLANS INDICATED OR REPRESENTED BY THIS DRAWING ARE OWNED BY, AND THE PROPERTY OF CARRIER JOHNSON + CULTURE AND WERE CREATED, EVOLVED AND DEVELOPED FOR USE ON, AND IN CONNECTION WITH THIS PROJECT. NONE OF SUCH IDEAS, DESIGN, ARRANGEMENTS, OR PLANS SHALL BE USED BY, OR DISCLOSED TO ANY PERSON, FIRM, OR CORPORATION FOR ANY PURPOSE WHATSOEVER WITHOUT THE WRITTEN PERMISSION OF CARRIER JOHNSON + CULTURE. FILING THESE DRAWINGS OR SPECIFICATIONS WITH ANY PUBLIC AGENCY IS NOT A PUBLICATION OF SAME. NO COPYING, REPRODUCTION OR USE THEREOF IS PERMISSIBLE WITHOUT THE CONSENT OF CARRIER JOHNSON + CULTURE.



**KEY NOTES:**

\*\*\* ALL KEY NOTE DIMENSIONS ARE UNLESS OTHER WISE NOTED ON PLANS\*\*\*

- 1** IP CAMERA LOCATION
  - QTY (1) SINGLE GANG J-BOX MOUNTED AT 96" AFF WITH QTY (1) 1" FLEX BROUGHT FROM J-BOX TO ACCESSIBLE CEILING - BY ELECTRICAL CONTRACTOR
  - QTY (1) DATA CABLE BROUGHT INTO J-BOX - BY DATA CONTRACTOR
- 2** CARD READER LOCATION
  - QTY (1) SINGLE GANG J-BOX MOUNTED AT 48" AFF WITH QTY (1) 1" FLEX BROUGHT FROM J-BOX TO PULL BOX ABOVE DOOR - BY ELECTRICAL CONTRACTOR
  - QTY (1) COMPOSITE CABLE
- 3** ALARM KEY PAD LOCATION
  - QTY (1) SINGLE GANG J-BOX MOUNTED AT 48" AFF WITH QTY (1) 1" FLEX BROUGHT FROM J-BOX TO ACCESSIBLE CEILING - BY ELECTRICAL CONTRACTOR
  - QTY (1) 22/4 WIRE
- 4** DOOR CONTACT LOCATION
  - MOUNTED IN DOOR FRAME WITH QTY (1) 1" FLEX BROUGHT FROM J-BOX TO PULL BOX ABOVE DOOR - BY ELECTRICAL CONTRACTOR (SEE DOOR DETAIL)
  - QTY (1) 22/4 WIRE
- 5** IR MOTION SENSOR LOCATION
  - QTY (1) SINGLE GANG J-BOX MOUNTED AT 96" AFF WITH QTY (1) 1" FLEX BROUGHT FROM J-BOX TO ACCESSIBLE CEILING - BY ELECTRICAL CONTRACTOR
  - QTY (1) 22/4 WIRE
- 6** ELEVATOR CAMERA
  - MOUNTED INSIDE ELEVATOR CAB - BY OTHERS
- 7** ELEVATOR CARD READER
  - MOUNTED INSIDE ELEVATOR CAB - BY OTHERS

**carrierjohnson + CULTURE**  
 architecture + environments + brand strategy + graphics  
 1301 third avenue, san diego ca 92101  
 phone 619.239.2363 fax 619.239.6227

**AIRBORNE SAN DIEGO**  
 1401 IMPERIAL AVENUE  
 SAN DIEGO, CA 92101

10-01-14 DESIGN DEVELOPMENT  
 08-20-14 SCHEMATIC DESIGN  
 ISSUES:

PRELIMINARY  
 NOT FOR  
 CONSTRUCTION

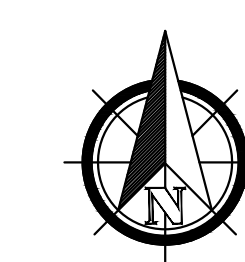
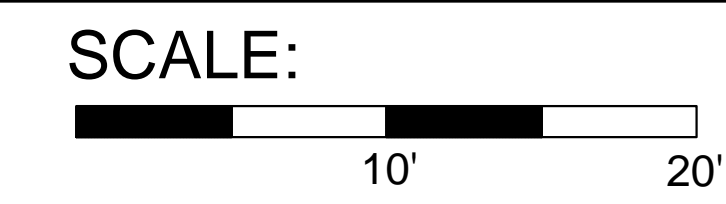
PROJECT NO: \_\_\_\_\_  
 543200  
 FILENAME: \_\_\_\_\_  
 DRAWN BY: \_\_\_\_\_ CHECKED BY: \_\_\_\_\_  
 KP  
 PLOT DATE: \_\_\_\_\_  
 10-01-14  
 TITLE: \_\_\_\_\_

ACCESS CONTROL  
 AND SECURITY  
 1ST FLOOR LAYOUT

DRAWING NO: \_\_\_\_\_

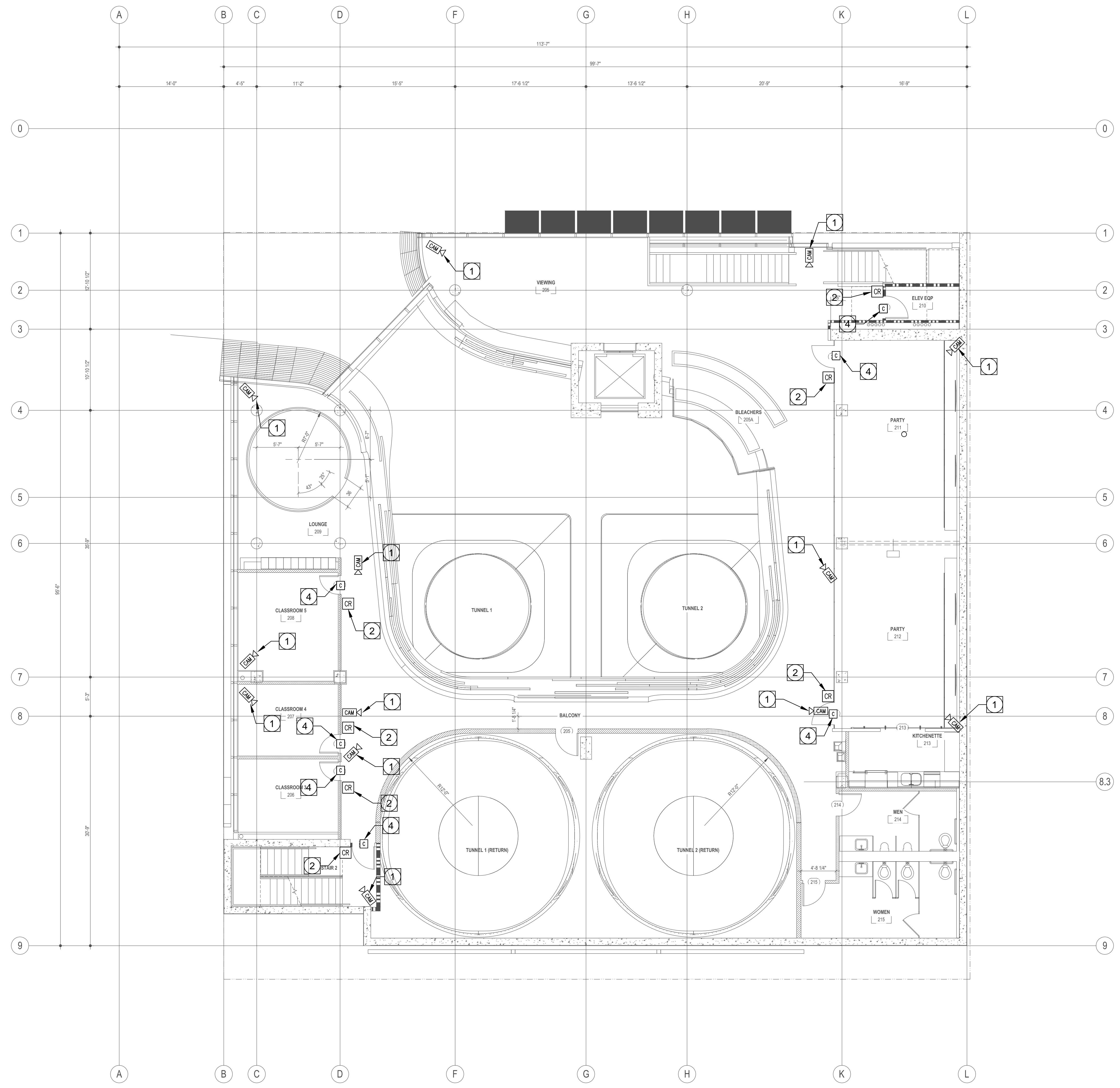
**SEC 1.01**

**1ST FLOOR  
 ACCESS CONTROL AND SECURITY EQUIPMENT LAYOUT**



**1**

ALL IDEAS, DESIGN, ARRANGEMENTS AND PLANS INDICATED OR REPRESENTED BY THIS DRAWING ARE OWNED BY, AND THE PROPERTY OF CARRIER JOHNSON + CULTURE AND WERE CREATED, EVOLVED AND DEVELOPED FOR USE ON, AND IN CONNECTION WITH THIS PROJECT. NONE OF SUCH IDEAS, DESIGN, ARRANGEMENTS, OR PLANS SHALL BE USED BY, OR DISCLOSED TO ANY PERSON, FIRM, OR CORPORATION FOR ANY PURPOSE WHATSOEVER WITHOUT THE WRITTEN PERMISSION OF CARRIER JOHNSON + CULTURE. FILING THESE DRAWINGS OR SPECIFICATIONS WITH ANY PUBLIC AGENCY IS NOT A PUBLICATION OF SAME. NO COPYING, REPRODUCTION OR USE THEREOF IS PERMISSIBLE WITHOUT THE CONSENT OF CARRIER JOHNSON + CULTURE.



**KEY NOTES:**

\*\*\* ALL KEY NOTE DIMENSIONS ARE UNLESS OTHER WISE NOTED ON PLANS\*\*\*

- 1 IP CAMERA LOCATION
  - QTY (1) SINGLE GANG J-BOX MOUNTED AT 96" AFF WITH QTY (1) 1" FLEX BROUGHT FROM J-BOX TO ACCESSIBLE CEILING - BY ELECTRICAL CONTRACTOR
  - QTY (1) DATA CABLE BROUGHT INTO J-BOX - BY DATA CONTRACTOR
- 2 CARD READER LOCATION
  - QTY (1) SINGLE GANG J-BOX MOUNTED AT 48" AFF WITH QTY (1) 1" FLEX BROUGHT FROM J-BOX TO PULL BOX ABOVE DOOR - BY ELECTRICAL CONTRACTOR
  - QTY (1) COMPOSITE CABLE
- 3 ALARM KEY PAD LOCATION
  - QTY (1) SINGLE GANG J-BOX MOUNTED AT 48" AFF WITH QTY (1) 1" FLEX BROUGHT FROM J-BOX TO ACCESSIBLE CEILING - BY ELECTRICAL CONTRACTOR
  - QTY (1) 22/4 WIRE
- 4 DOOR CONTACT LOCATION
  - MOUNTED IN DOOR FRAME WITH QTY (1) 1" FLEX BROUGHT FROM J-BOX TO PULL BOX ABOVE DOOR - BY ELECTRICAL CONTRACTOR (SEE DOOR DETAIL)
  - QTY (1) 22/4 WIRE
- 5 IR MOTION SENSOR LOCATION
  - QTY (1) SINGLE GANG J-BOX MOUNTED AT 96" AFF WITH QTY (1) 1" FLEX BROUGHT FROM J-BOX TO ACCESSIBLE CEILING - BY ELECTRICAL CONTRACTOR
  - QTY (1) 22/4 WIRE
- 6 ELEVATOR CAMERA
  - MOUNTED INSIDE ELEVATOR CAB - BY OTHERS
- 7 ELEVATOR CARD READER
  - MOUNTED INSIDE ELEVATOR CAB - BY OTHERS

**carrierjohnson + CULTURE**  
 architecture + environments + brand strategy + graphics  
 1301 third avenue, san diego ca 92101  
 phone 619.239.2363 fax 619.239.6227

**AIRBORNE SAN DIEGO**  
 1401 IMPERIAL AVENUE  
 SAN DIEGO, CA 92101

10-01-14 DESIGN DEVELOPMENT  
 08-20-14 SCHEMATIC DESIGN  
 ISSUES:

PRELIMINARY  
 NOT FOR  
 CONSTRUCTION

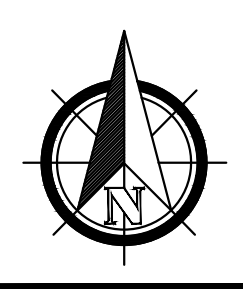
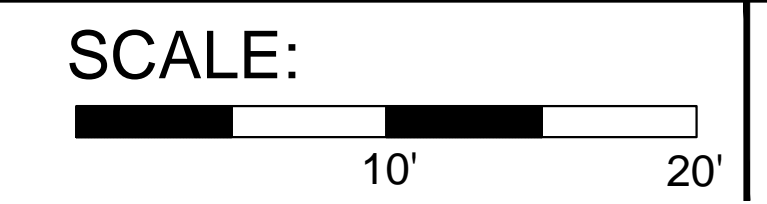
PROJECT NO: \_\_\_\_\_  
 543210  
 FILENAME: \_\_\_\_\_  
 DRAWN BY: \_\_\_\_\_ CHECKED BY: \_\_\_\_\_  
 KP  
 PLOT DATE: \_\_\_\_\_  
 10-01-14  
 TITLE: \_\_\_\_\_

ACCESS CONTROL  
 AND SECURITY  
 2ND FLOOR LAYOUT

DRAWING NO: \_\_\_\_\_

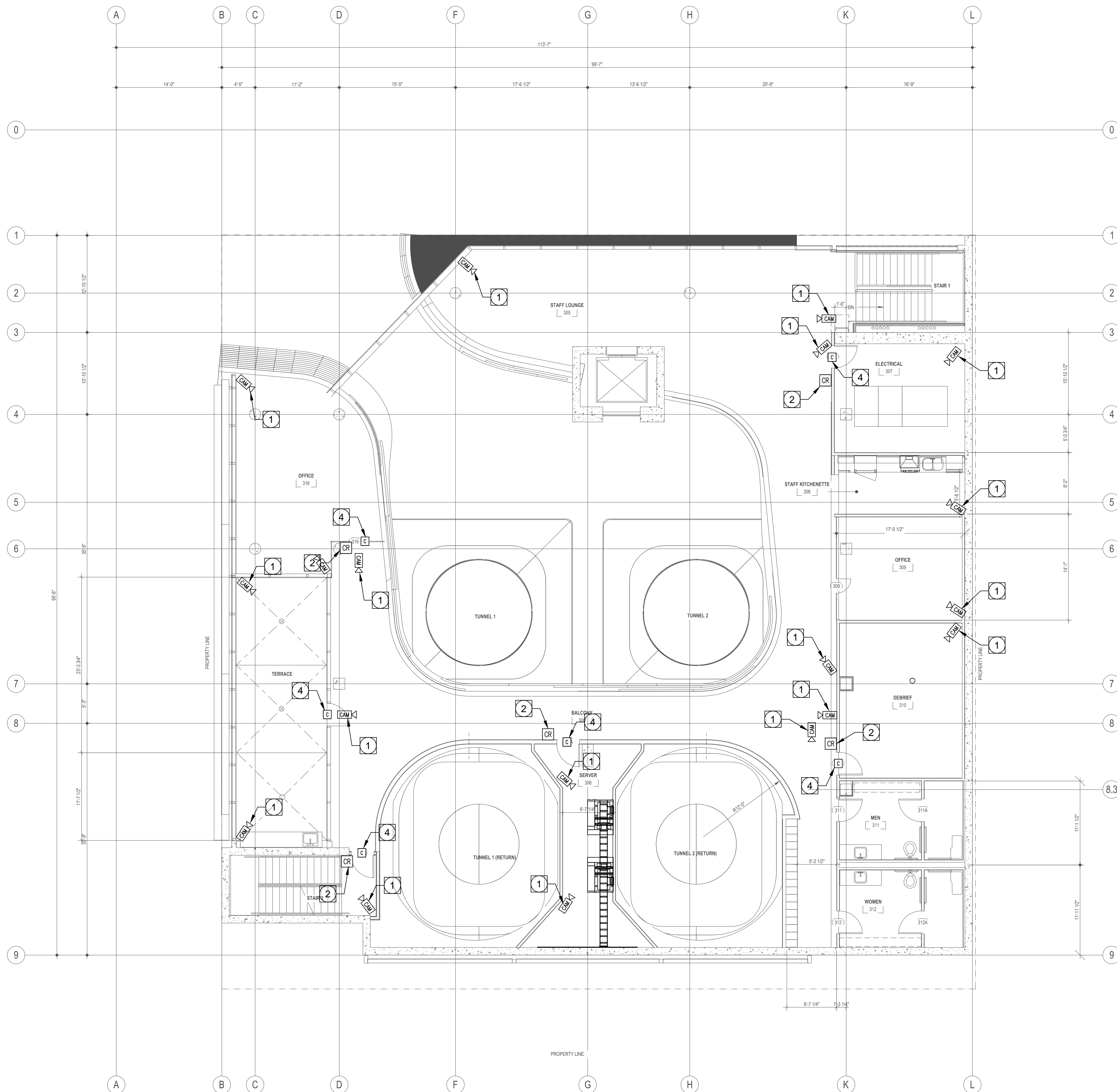
**SEC 1.02**

**2ND FLOOR  
 ACCESS CONTROL AND SECURITY EQUIPMENT LAYOUT**



**1**

ALL IDEAS, DESIGN, ARRANGEMENTS AND PLANS INDICATED OR REPRESENTED BY THIS DRAWING ARE OWNED BY, AND THE PROPERTY OF CARRIER JOHNSON + CULTURE AND WERE CREATED, EVOLVED AND DEVELOPED FOR USE ON, AND IN CONNECTION WITH THIS PROJECT. NONE OF SUCH IDEAS, DESIGN, ARRANGEMENTS, OR PLANS SHALL BE USED BY, OR DISCLOSED TO ANY PERSON, FIRM, OR CORPORATION FOR ANY PURPOSE WHATSOEVER WITHOUT THE WRITTEN PERMISSION OF CARRIER JOHNSON + CULTURE. FILING THESE DRAWINGS OR SPECIFICATIONS WITH ANY PUBLIC AGENCY IS NOT A PUBLICATION OF SAME. NO COPYING, REPRODUCTION OR USE THEREOF IS PERMISSIBLE WITHOUT THE CONSENT OF CARRIER JOHNSON + CULTURE.



**KEY NOTES:**

\*\*\* ALL KEY NOTE DIMENSIONS ARE UNLESS OTHER WISE NOTED ON PLANS\*\*\*

- 1 IP CAMERA LOCATION
  - QTY (1) SINGLE GANG J-BOX MOUNTED AT 96" AFF WITH QTY (1) 1" FLEX BROUGHT FROM J-BOX TO ACCESSIBLE CEILING - BY ELECTRICAL CONTRACTOR
  - QTY (1) DATA CABLE BROUGHT INTO J-BOX - BY DATA CONTRACTOR
- 2 CARD READER LOCATION
  - QTY (1) SINGLE GANG J-BOX MOUNTED AT 48" AFF WITH QTY (1) 1" FLEX BROUGHT FROM J-BOX TO PULL BOX ABOVE DOOR - BY ELECTRICAL CONTRACTOR
  - QTY (1) COMPOSITE CABLE
- 3 ALARM KEY PAD LOCATION
  - QTY (1) SINGLE GANG J-BOX MOUNTED AT 48" AFF WITH QTY (1) 1" FLEX BROUGHT FROM J-BOX TO ACCESSIBLE CEILING - BY ELECTRICAL CONTRACTOR
  - QTY (1) 22/4 WIRE
- 4 DOOR CONTACT LOCATION
  - MOUNTED IN DOOR FRAME WITH QTY (1) 1" FLEX BROUGHT FROM J-BOX TO PULL BOX ABOVE DOOR - BY ELECTRICAL CONTRACTOR (SEE DOOR DETAIL)
  - QTY (1) 22/4 WIRE
- 5 IR MOTION SENSOR LOCATION
  - QTY (1) SINGLE GANG J-BOX MOUNTED AT 96" AFF WITH QTY (1) 1" FLEX BROUGHT FROM J-BOX TO ACCESSIBLE CEILING - BY ELECTRICAL CONTRACTOR
  - QTY (1) 22/4 WIRE
- 6 ELEVATOR CAMERA
  - MOUNTED INSIDE ELEVATOR CAB - BY OTHERS
- 7 ELEVATOR CARD READER
  - MOUNTED INSIDE ELEVATOR CAB - BY OTHERS

**carrierjohnson + CULTURE**  
 architecture + environments + brand strategy + graphics  
 1301 third avenue, san diego ca 92101  
 phone 619.239.2363 fax 619.239.6227

**AIRBORNE SAN DIEGO**  
 1401 IMPERIAL AVENUE  
 SAN DIEGO, CA 92101

10-01-14 DESIGN DEVELOPMENT  
 08-20-14 SCHEMATIC DESIGN  
 ISSUES:

PRELIMINARY  
 NOT FOR  
 CONSTRUCTION

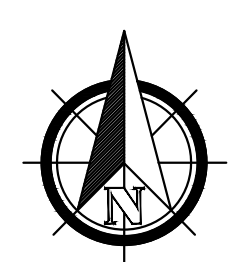
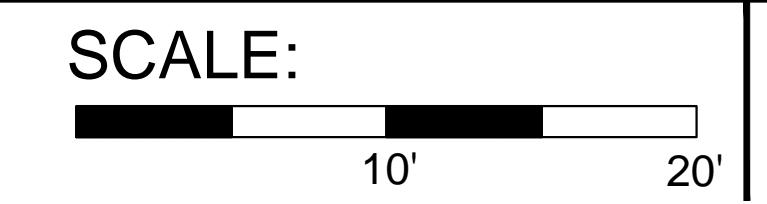
PROJECT NO: \_\_\_\_\_  
 543210  
 FILENAME: \_\_\_\_\_  
 DRAWN BY: \_\_\_\_\_ CHECKED BY: \_\_\_\_\_  
 KP  
 PLOT DATE: \_\_\_\_\_  
 10-01-14  
 TITLE: \_\_\_\_\_

ACCESS CONTROL  
 AND SECURITY  
 3RD FLOOR LAYOUT

DRAWING NO: \_\_\_\_\_

**SEC 1.03**

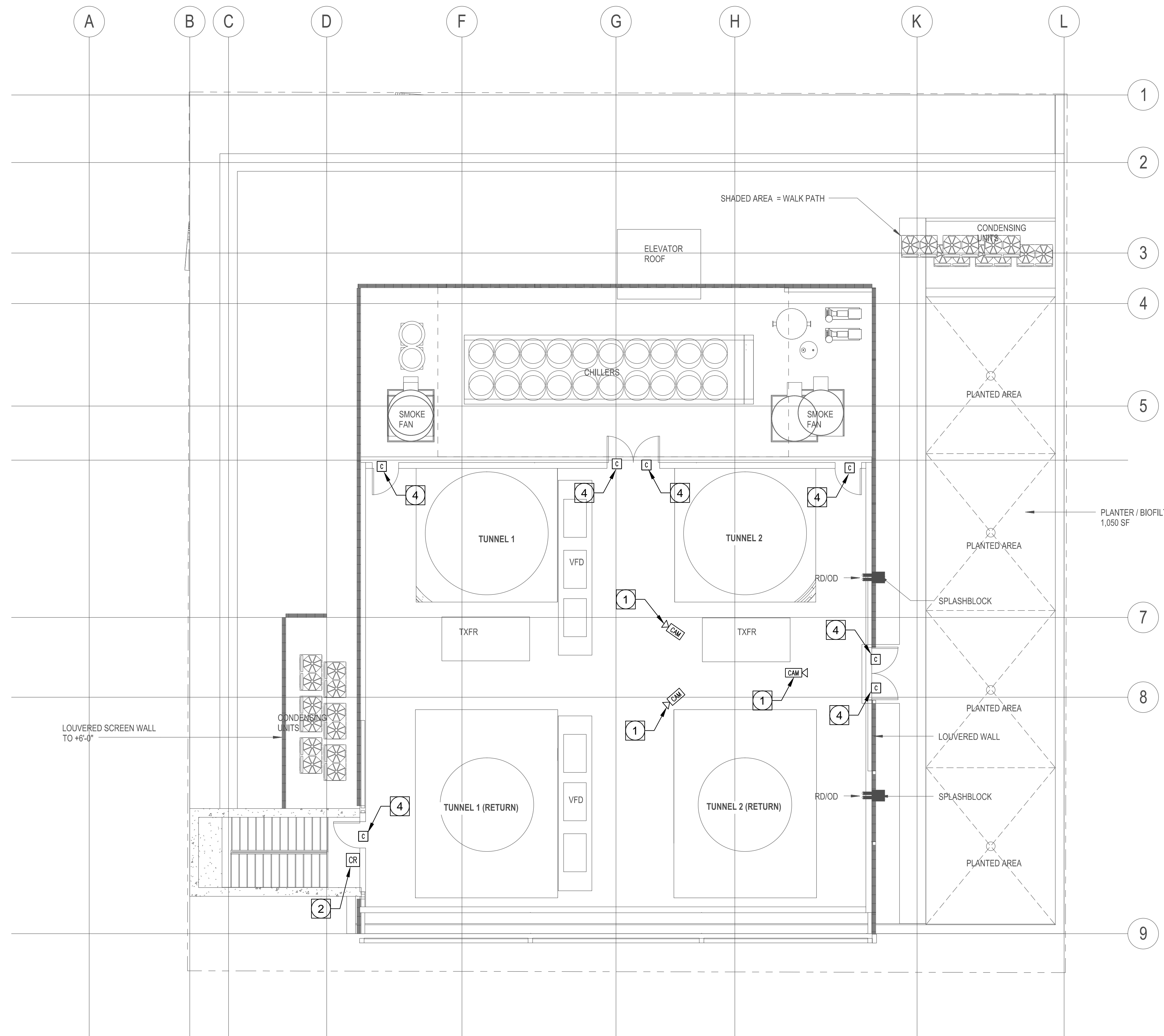
**3RD FLOOR  
 ACCESS CONTROL AND SECURITY EQUIPMENT LAYOUT**



**1**



ALL IDEAS, DESIGN, ARRANGEMENTS AND PLANS INDICATED OR REPRESENTED BY THIS DRAWING ARE OWNED BY, AND THE PROPERTY OF CARRIER JOHNSON + CULTURE AND WERE CREATED, EVOLVED AND DEVELOPED FOR USE ON, AND IN CONNECTION WITH THIS PROJECT. NONE OF SUCH IDEAS, DESIGN, ARRANGEMENTS, OR PLANS SHALL BE USED BY, OR DISCLOSED TO ANY PERSON, FIRM, OR CORPORATION FOR ANY PURPOSE WHATSOEVER WITHOUT THE WRITTEN PERMISSION OF CARRIER JOHNSON + CULTURE. FILING THESE DRAWINGS OR SPECIFICATIONS WITH ANY PUBLIC AGENCY IS NOT A PUBLICATION OF SAME. NO COPYING, REPRODUCTION OR USE THEREOF IS PERMISSIBLE WITHOUT THE CONSENT OF CARRIER JOHNSON + CULTURE.



**KEY NOTES:**

\*\*\* ALL KEY NOTE DIMENSIONS ARE UNLESS OTHER WISE NOTED ON PLANS\*\*\*

- 1 IP CAMERA LOCATION
  - QTY (1) SINGLE GANG J-BOX MOUNTED AT 96" AFF WITH QTY (1) 1" FLEX BROUGHT FROM J-BOX TO ACCESSIBLE CEILING - BY ELECTRICAL CONTRACTOR
  - QTY (1) DATA CABLE BROUGHT INTO J-BOX - BY DATA CONTRACTOR
- 2 CARD READER LOCATION
  - QTY (1) SINGLE GANG J-BOX MOUNTED AT 48" AFF WITH QTY (1) 1" FLEX BROUGHT FROM J-BOX TO PULL BOX ABOVE DOOR - BY ELECTRICAL CONTRACTOR
  - QTY (1) COMPOSITE CABLE
- 3 ALARM KEY PAD LOCATION
  - QTY (1) SINGLE GANG J-BOX MOUNTED AT 48" AFF WITH QTY (1) 1" FLEX BROUGHT FROM J-BOX TO ACCESSIBLE CEILING - BY ELECTRICAL CONTRACTOR
  - QTY (1) 22/4 WIRE
- 4 DOOR CONTACT LOCATION
  - MOUNTED IN DOOR FRAME WITH QTY (1) 1" FLEX BROUGHT FROM J-BOX TO PULL BOX ABOVE DOOR - BY ELECTRICAL CONTRACTOR (SEE DOOR DETAIL)
  - QTY (1) 22/4 WIRE
- 5 IR MOTION SENSOR LOCATION
  - QTY (1) SINGLE GANG J-BOX MOUNTED AT 96" AFF WITH QTY (1) 1" FLEX BROUGHT FROM J-BOX TO ACCESSIBLE CEILING - BY ELECTRICAL CONTRACTOR
  - QTY (1) 22/4 WIRE
- 6 ELEVATOR CAMERA
  - MOUNTED INSIDE ELEVATOR CAB - BY OTHERS
- 7 ELEVATOR CARD READER
  - MOUNTED INSIDE ELEVATOR CAB - BY OTHERS

**carrierjohnson + CULTURE**  
 architecture + environments + brand strategy + graphics  
 1301 third avenue, san diego ca 92101  
 phone 619.239.2363 fax 619.239.6227

**AIRBORNE SAN DIEGO**  
 1401 IMPERIAL AVENUE  
 SAN DIEGO, CA 92101

10-01-14 DESIGN DEVELOPMENT  
 08-20-14 SCHEMATIC DESIGN  
 ISSUES:

PRELIMINARY  
 NOT FOR  
 CONSTRUCTION

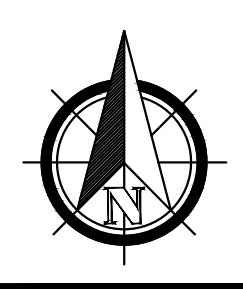
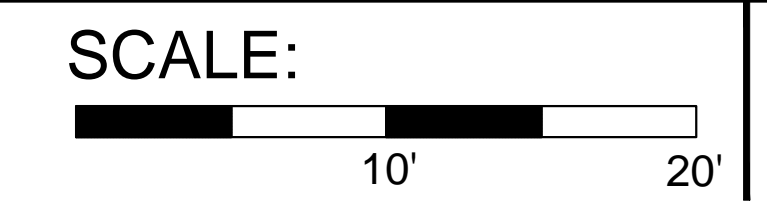
PROJECT NO: \_\_\_\_\_  
 543210  
 FILENAME: \_\_\_\_\_  
 DRAWN BY: \_\_\_\_\_ CHECKED BY: \_\_\_\_\_  
 KP  
 PLOT DATE: \_\_\_\_\_  
 10-01-14  
 TITLE: \_\_\_\_\_

**ACCESS CONTROL  
 AND SECURITY  
 ROOF LAYOUT**

DRAWING NO: \_\_\_\_\_

**SEC 1.04**

**ROOF  
 ACCESS CONTROL AND SECURITY EQUIPMENT LAYOUT**



**1**