

Pure Water San Diego Morena Northern Pipelines & Tunnels Project Update

University City Community Association

*Clem Wassenberg
March 13, 2024*

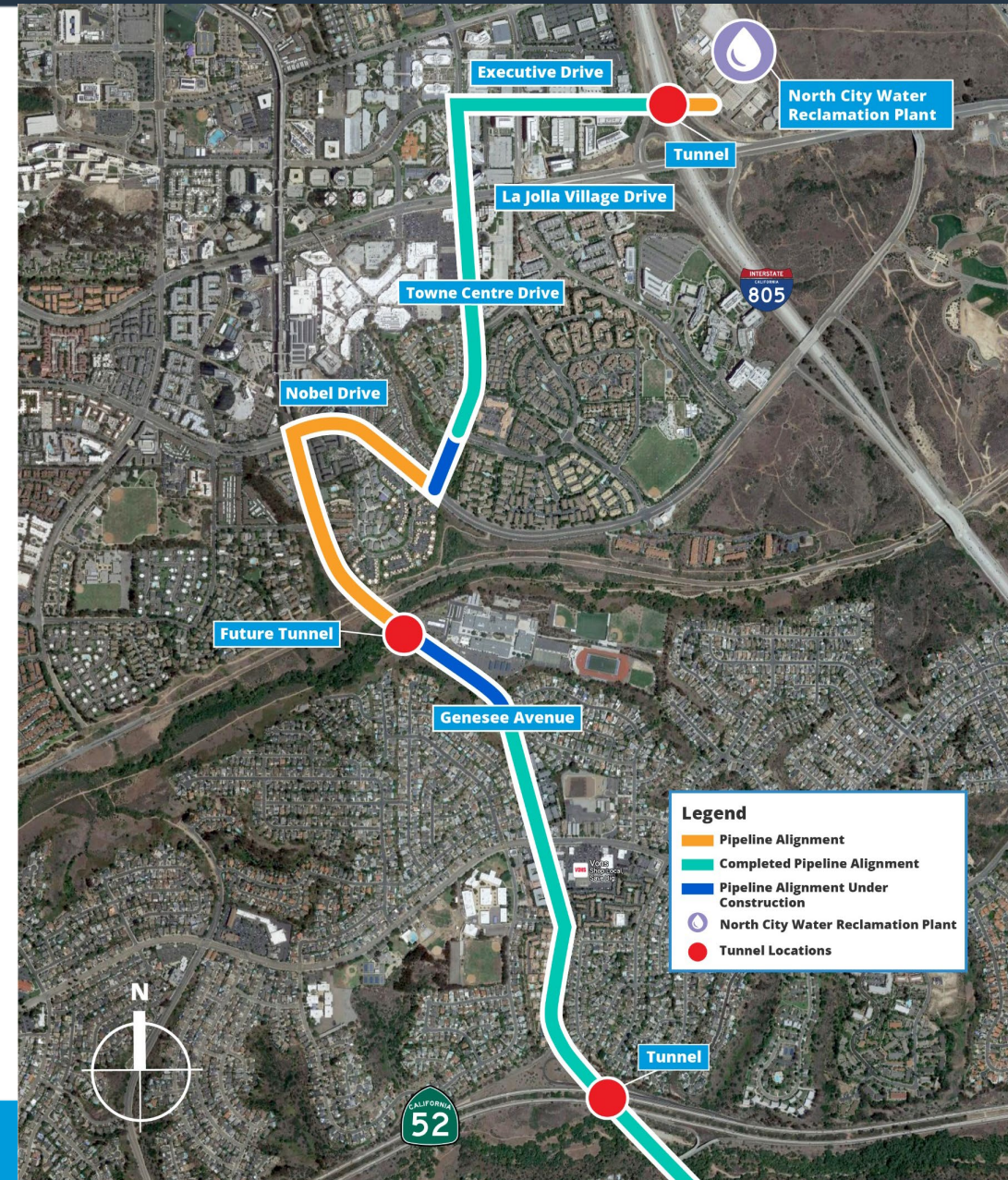


Introductions



SD Morena Northern Pipelines & Tunnels

- Two pipelines – from Genesee and Appleton to NCWRP
 - *One transports wastewater to NCWRP (N)*
 - *One transports brine from NCPWF to PLWTP (S)*
- Three tunnels at SR-52, Rose Canyon (Genesee), and I-805
- 12,247 linear feet of pipeline installed
- 196 linear feet of tunnel
- Next major milestones:
 - *Continued work on Genesee Avenue northbound*
 - *Towne Centre Drive from Excalibur Way to Nobel*



Full Alignment: What You Can Expect

- Work will occur during daytime with occasional night work
- *Monday-Friday, 7 a.m. to 5:30 p.m., occasional Saturday work, 8 a.m. to 4 p.m.*
- K-rail for safety of public and workers
- *Access for residents, businesses and emergency vehicles will be maintained where possible; some delays expected*
- Construction equipment and material staging will be in work zone and will move along with construction
- Possible full-time intersection closures and short-term closures for weekend work
- Posted detours for motorists, cyclists and pedestrians where needed. Trails to remain open wherever possible
- No parking in construction zones
- Impacts such as noise, dust, bright lights and construction vehicle traffic during work hours



Current Work Sites



Towne Centre Drive

SD Construction Details: Southbound Towne Centre Drive

- Work hours: Day work
7 a.m. to 5:30 p.m.
- Work has started
- Tentative completion of
current phase: April 2024



- Pipe has been installed between La Jolla Gateway and Excalibur Way







**Genesee Avenue,
north of Governor Drive**

SD Genesee Avenue - Governor Drive to Centurion Square

- Work hours: Day work from 7 a.m. to 5:30 p.m.
- Southbound lanes closed due to construction
- Single lane traffic in the northbound lane, one lane each direction
- Timing: In progress



SD Genesee Avenue - Luigi Terrace to Centurion Square

- Work hours: Day work from 7 a.m. to 5:30 p.m.
- Southbound lanes will be closed due to construction
- Single-lane traffic in the northbound lane, one lane each direction
- Timing: Mid-March through Fall 2024



SD Genesee Avenue - Governor Drive to Centurion Square

- Coordinating access with UC High School to mitigate traffic around Centurion Square
- Coordinating access with Elan Terraza Apartments



SD Genesee Avenue - Governor Drive to Centurion Square



SD Governor Drive to Luigi Terrace – Status of Trees

- Contractor is currently excavating along trees
- Trees and tree roots are being monitored by an arborist
- No issues encountered and no tree removal required as of yet





Tunneling Work



San Clemente Tunnel at Marian Bear Park





San Clemente Tunnel at Marian Bear Park



- Launch and receiving shaft construction is now ongoing in the center of Genesee Avenue and the parking lot of Marian Bear Park
- Marian Bear Park and Trails are open for use
- Temporary closure of Marian Bear Park parking lot for public safety
 - *Alternate parking can be located at 5233 Regents Road*



- Construction notices with maps
- Stakeholder meetings
- Webpage content
- Postcard Mailer
- Community news article content
- E-blast content
- Social media
- Fact sheets and pocket cards
- Waze & Google Maps



Website:
purewatersd.org



Phone Line:
833-882-7973
833-UTC-PWSD



Social Media:
[@purewatersd](https://www.instagram.com/purewatersd)



Media Relations



E-blasts & Mailers



Meetings

**Sign up for E-
blasts (List #6):**



**Phone Line:
833-882-7973
833-UTC-PWSD**

Community Liaison: Mariah Hugo Almasco, mhugo@san Diego.gov



Questions?