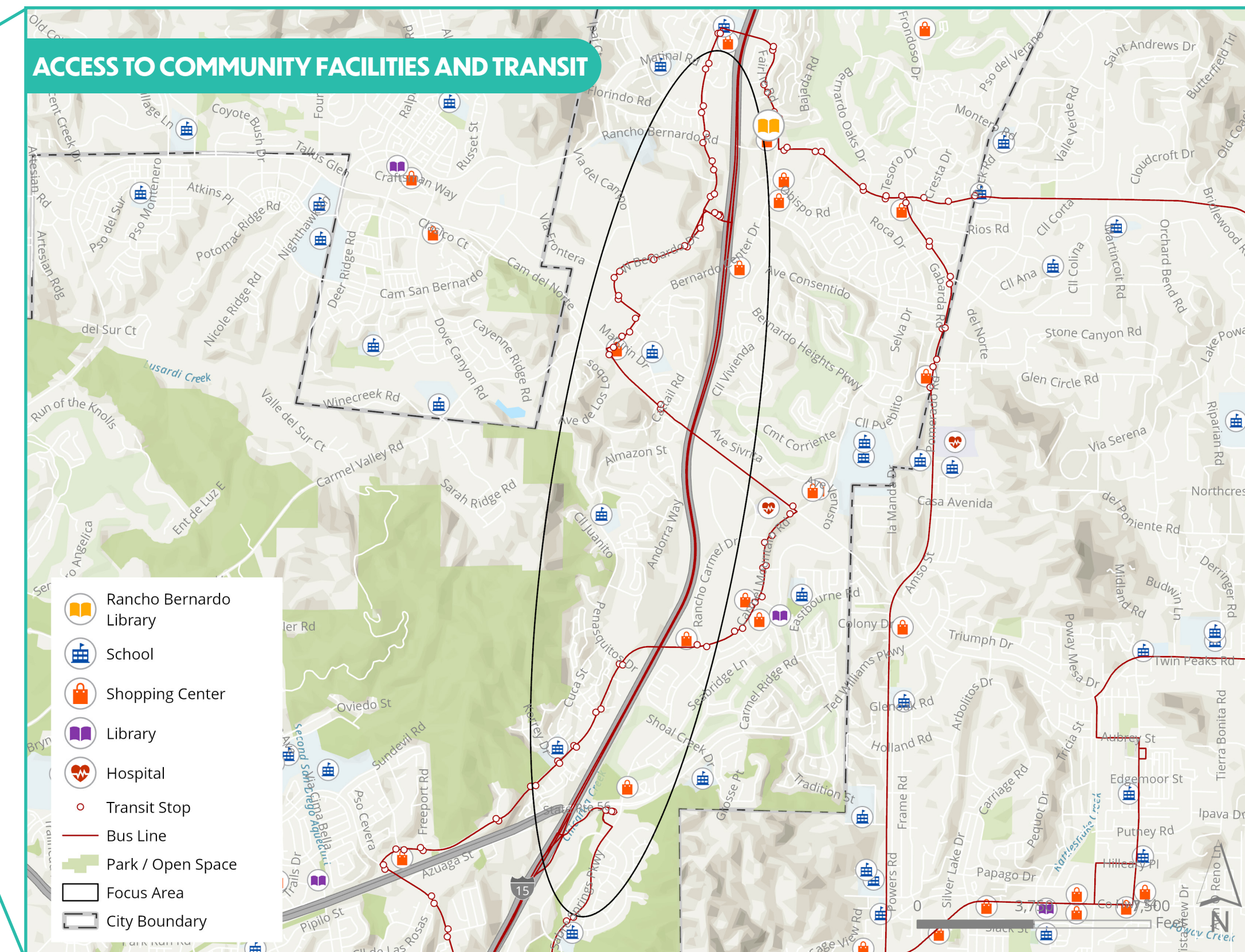
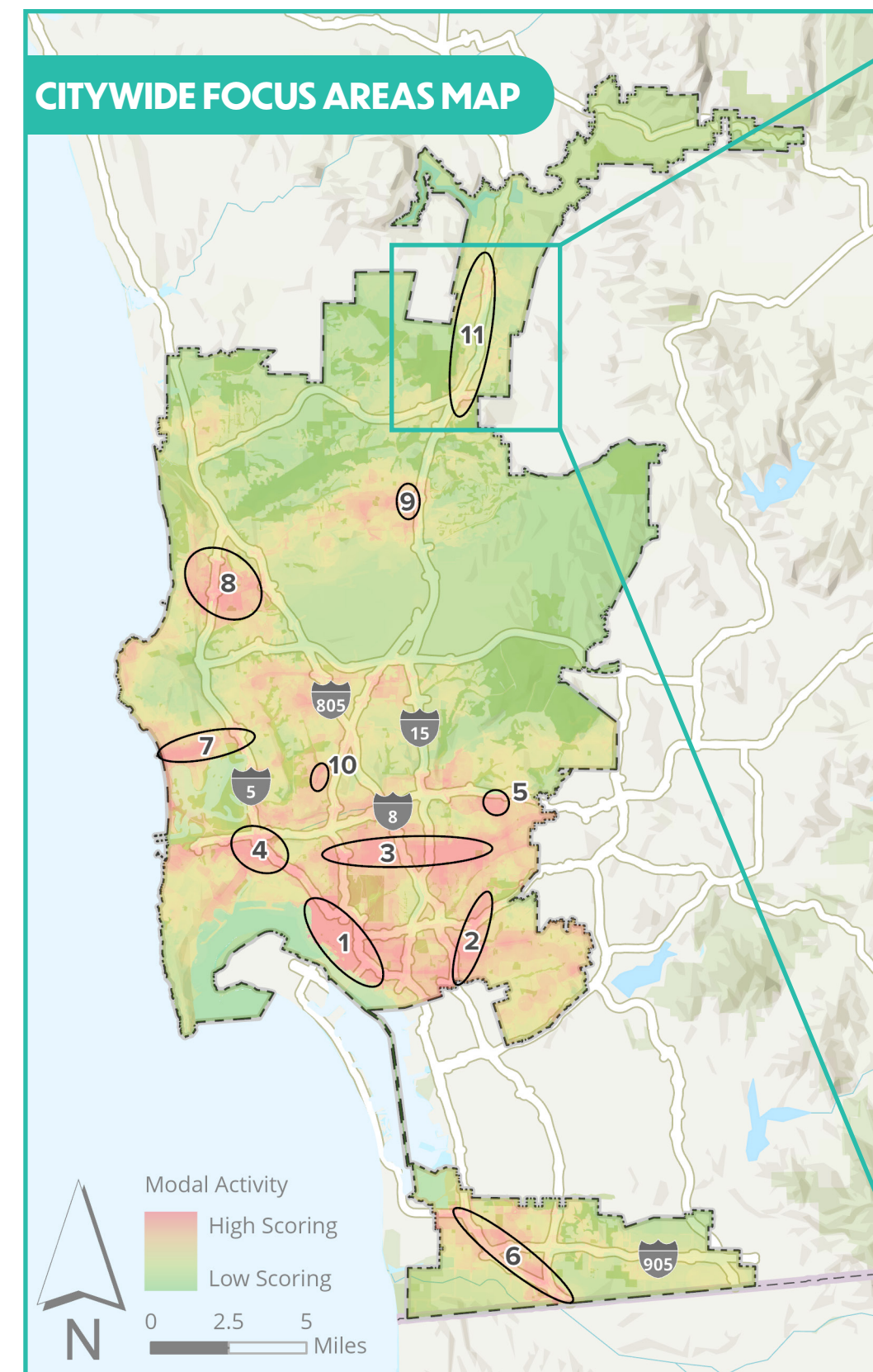


## COMMUNITY SETTING

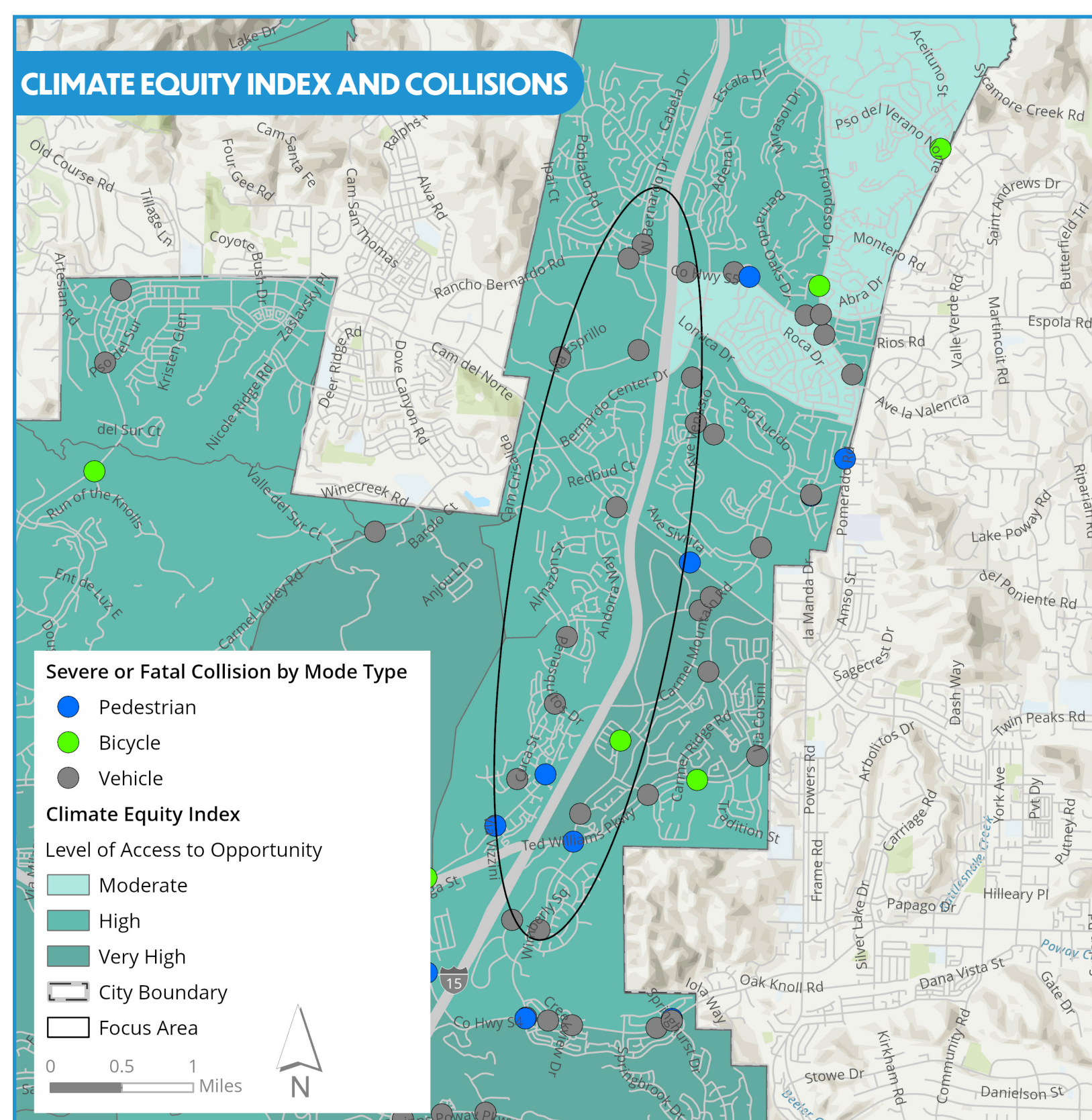
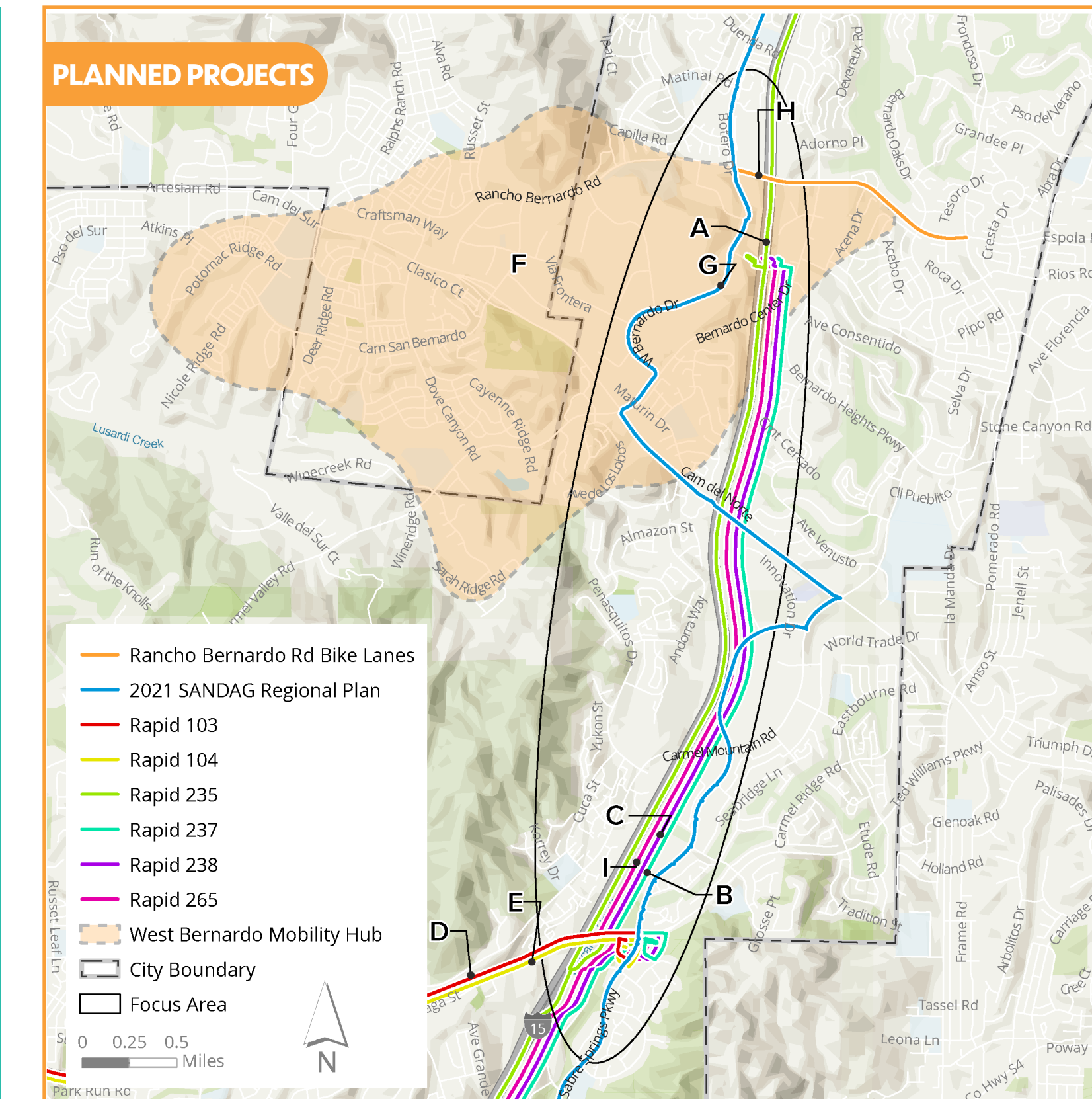
**MOBILITY MASTER PLAN FOCUS AREA #11 INCLUDES PARTS OF RANCHO BERNARDO AND CAPTURES A SEGMENT OF INTERSTATE-15. THE AREA IS IN CLOSE PROXIMITY TO NATURAL FEATURES SUCH AS LAKE HODGES. IT POSES UNIQUE MOBILITY CHALLENGES AND OPPORTUNITIES DUE TO THE AREA'S SUBURBAN NATURE.**

	<b>POPULATION</b>	<b>FOCUS AREA: 25,000</b> CITY OF SAN DIEGO: 1,386,300
	<b>MEDIAN HOUSEHOLD INCOME</b>	<b>FOCUS AREA: \$105,000</b> CITY OF SAN DIEGO: \$88,000
	<b>MEDIAN AGE</b>	<b>FOCUS AREA: 37</b> CITY OF SAN DIEGO: 36
	<b>PERCENTAGE OF WORKERS DRIVING ALONE</b>	<b>FOCUS AREA: 70%</b> CITY OF SAN DIEGO: 69%
	<b>PERCENTAGE OF HOUSEHOLDS WITH NO VEHICLE</b>	<b>FOCUS AREA: 5%</b> CITY OF SAN DIEGO: 6%

## FOCUS AREA ANALYSIS

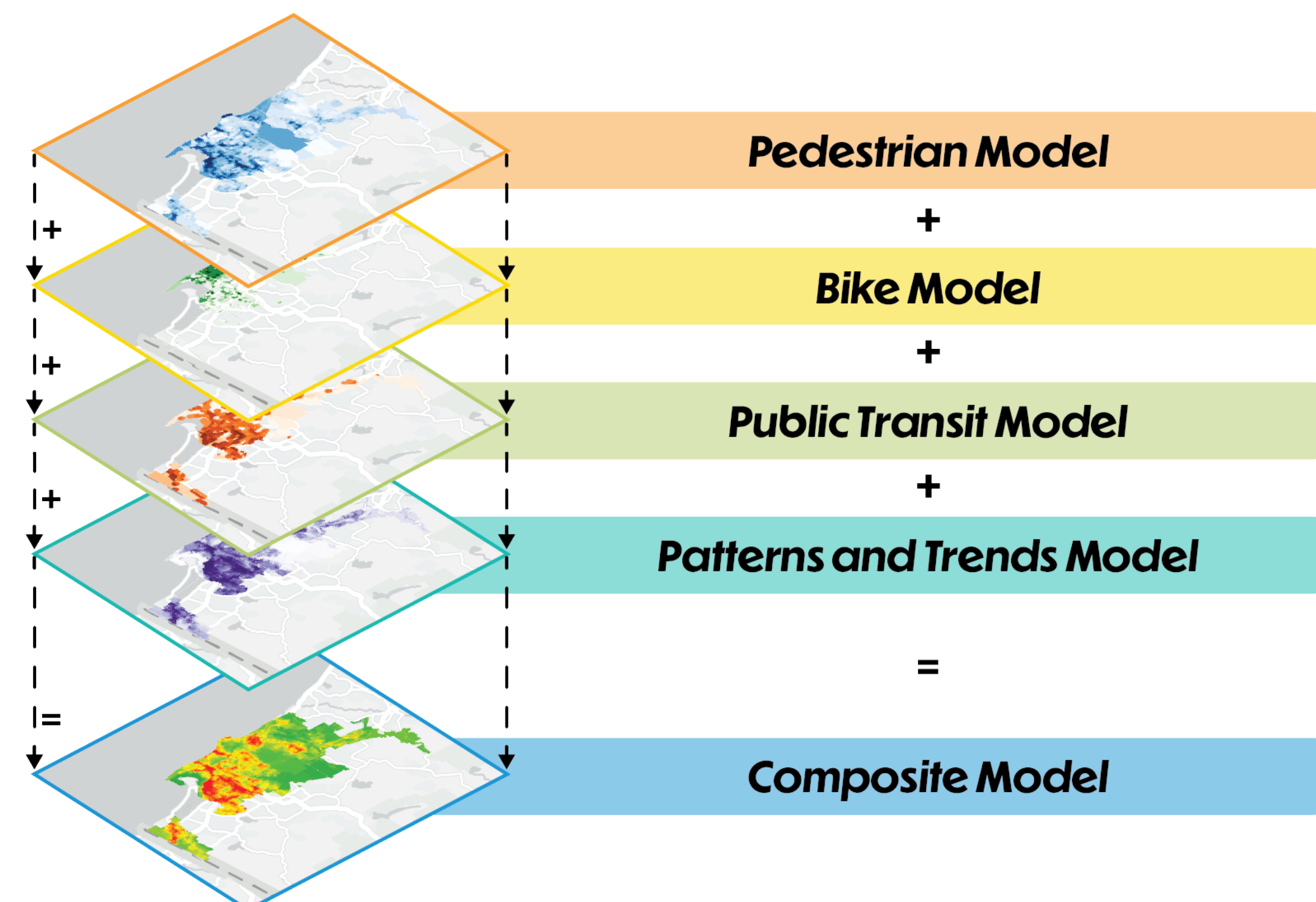


## MOBILITY PROJECTS



### MULTIPLE DATASETS WERE COMBINED TO DEVELOP THE MOBILITY MASTER PLAN FOCUS AREAS:

- » PERCENTAGE OF WORKERS THAT COMMUTE BY MODE TYPE
- » ALL CRASHES BY MODE TYPE
- » PEDESTRIAN PROPENSITY ANALYSIS
- » BICYCLE PROPENSITY ANALYSIS
- » TRANSIT PRIORITY AREAS
- » NUMBER OF SEVERE AND FATAL COLLISIONS
- » CLIMATE EQUITY INDEX
- » BLUEPRINT DEVELOPMENT PROPENSITY MODEL
- » POPULATION DENSITY
- » POPULATION GROWTH
- » COMMUNITIES OF CONCERN
- » SANDAG SMART GROWTH AREAS
- » BLUEPRINT SAN DIEGO
- » HOUSEHOLDS WITH NO VEHICLE OWNERSHIP
- » PROXIMITY TO MAJOR POINTS OF INTEREST



City Projects	Description
<b>A</b>	Transit Leap Rapid 235 - Escondido to Downtown San Diego via I-15 (DAR stations)
<b>B</b>	Transit Leap Rapid 237 - UC San Diego to Rancho Bernardo via Sorrento Valley and Mira Mesa
<b>C</b>	Transit Leap Rapid 238 - UC San Diego to Rancho Bernardo via Sorrento Valley and Carroll Canyon
<b>D</b>	Transit Leap Rapid 103 - Solana Beach to Sabre Springs via Del Mar Heights and SR-56
<b>E</b>	Transit Leap Rapid 104 - Sorrento Valley to Sabre Springs via SR 56
<b>F</b>	West Bernardo Mobility Hub would offer access to multiple transportation options, such as Rapid bus, microtransit, and shared mobility
<b>G</b>	I-15 Bikeway (off-street) from Poway Rd Interchange to Carmel Mountain Rd
<b>H</b>	Bike lanes along Rancho Bernardo Rd from W Bernardo Dr to Acena Dr
<b>I</b>	Rapid 265 - Otay to Escondido (Potential project per the Draft 2025 Regional Plan)
<b>Not mapped</b>	Circulator Route 675 - Rancho Bernardo Business Park Loop (Potential project per the Draft 2025 Regional Plan)

The development of the 2025 Regional Plan is underway and for information visit:

<https://www.sandag.org/regional-plan/2025-regional-plan>

It is important to note that this regional plan update could modify projects and/or add new mobility recommendations.