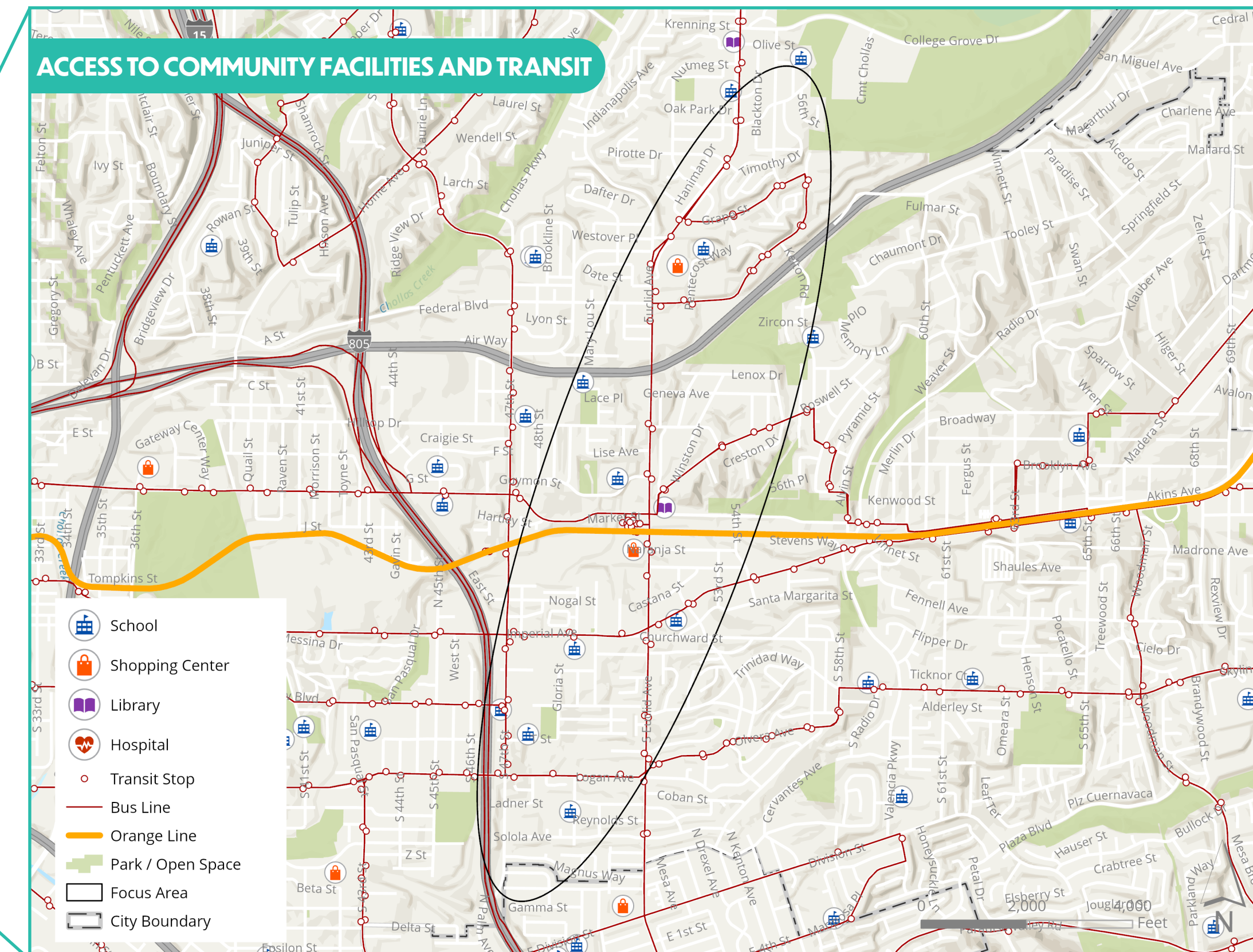
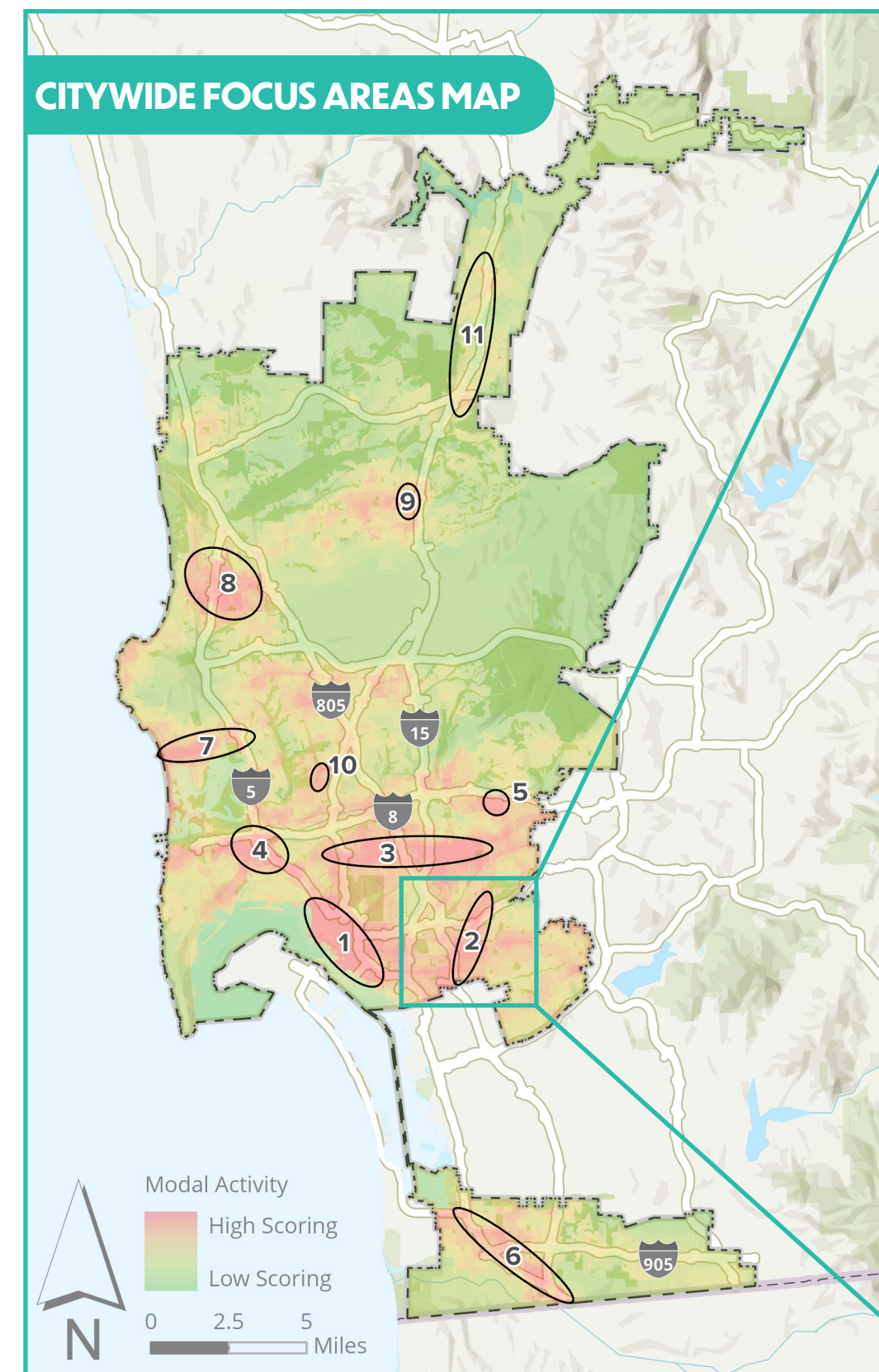


## COMMUNITY SETTING

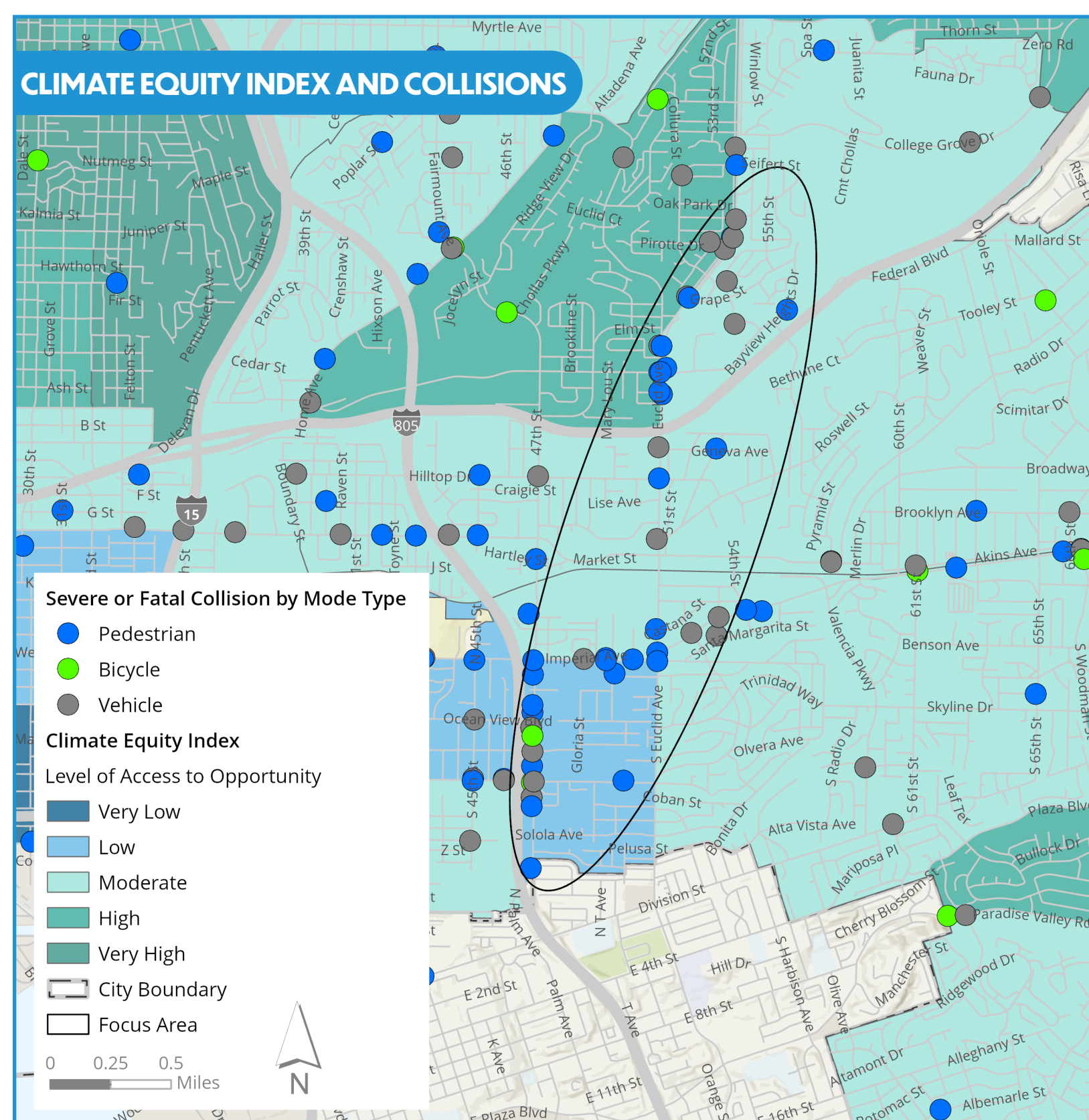
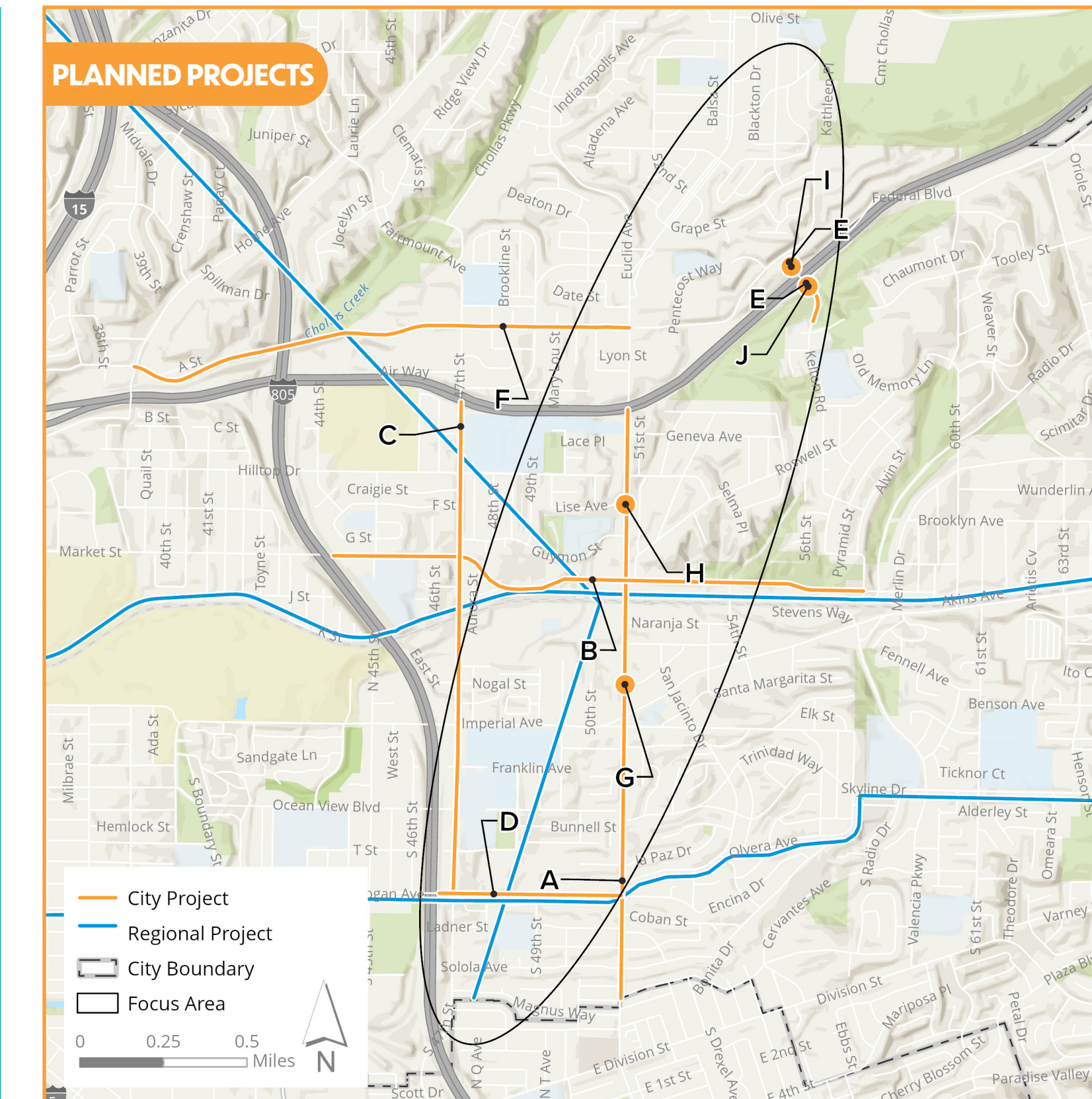
THE MOBILITY MASTER PLAN FOCUS AREA #2 INCLUDES PARTS OF SOUTHEASTERN SAN DIEGO, ENCANTO NEIGHBORHOODS, AND EASTERN AREA. THIS AREA CAPTURES A SEGMENT OF STATE ROUTE-94. IT POSES UNIQUE MOBILITY CHALLENGES DUE TO LIMITED QUALITY FACILITIES FOR VIABLE TRANSIT ACCESS AND ACTIVE TRANSPORTATION USE.

- POPULATION**      **FOCUS AREA: 20,000**  
CITY OF SAN DIEGO: 1,386,300
- MEDIAN HOUSEHOLD INCOME**      **FOCUS AREA: \$44,000**  
CITY OF SAN DIEGO: \$88,000
- MEDIAN AGE**      **FOCUS AREA: 30**  
CITY OF SAN DIEGO: 36
- PERCENTAGE OF WORKERS DRIVING ALONE**      **FOCUS AREA: 68%**  
CITY OF SAN DIEGO: 69%
- PERCENTAGE OF HOUSEHOLDS WITH NO VEHICLE**      **FOCUS AREA: 8%**  
CITY OF SAN DIEGO: 6%

## FOCUS AREA ANALYSIS

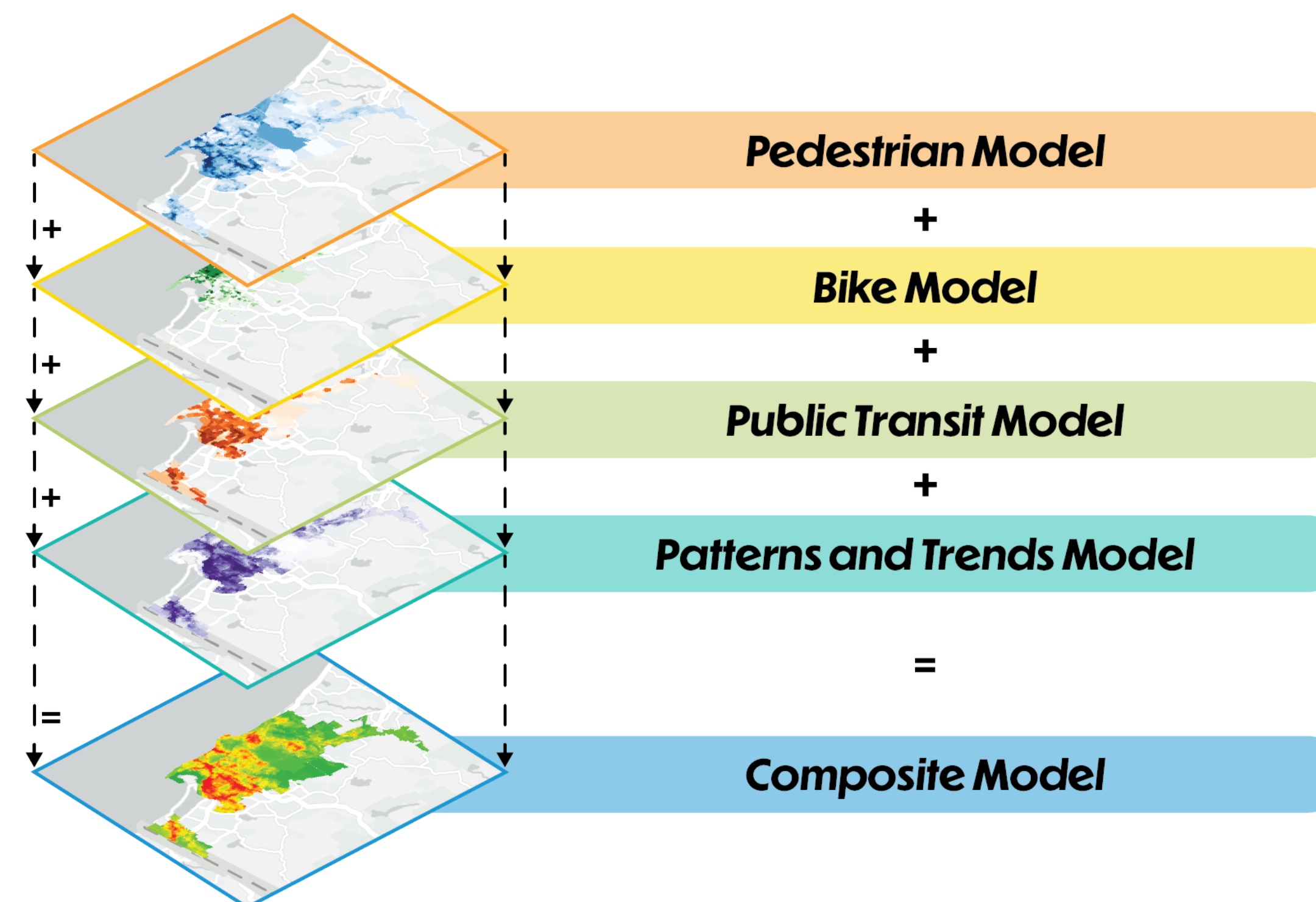


## MOBILITY PROJECTS



MULTIPLE DATASETS WERE COMBINED TO DEVELOP THE MOBILITY MASTER PLAN FOCUS AREAS:

- » PERCENTAGE OF WORKERS THAT COMMUTE BY MODE TYPE
- » ALL CRASHES BY MODE TYPE
- » PEDESTRIAN PROPENSITY ANALYSIS
- » BICYCLE PROPENSITY ANALYSIS
- » TRANSIT PRIORITY AREAS
- » NUMBER OF SEVERE AND FATAL COLLISIONS
- » CLIMATE EQUITY INDEX
- » BLUEPRINT DEVELOPMENT PROPENSITY MODEL
- » POPULATION DENSITY
- » POPULATION GROWTH
- » COMMUNITIES OF CONCERN
- » SANDAG SMART GROWTH AREAS
- » BLUEPRINT SAN DIEGO
- » HOUSEHOLDS WITH NO VEHICLE OWNERSHIP
- » PROXIMITY TO MAJOR POINTS OF INTEREST



City Projects	Description
<b>A</b>	Corridor improvements along Euclid Ave between SR-94 to Cervantes Ave, including bike lanes, cycle tracks, marked crosswalks, new curb ramps, and curb extensions
<b>B</b>	Corridor improvements along Market St between I-805 to Pitta St, including cycle tracks, new sidewalks, and raised medians
<b>C</b>	Corridor improvements along 47th St between SR-94 and Logan Ave, including bike lanes, cycle tracks, and roadway reconfiguration
<b>D</b>	Two-lane collector and buffered bike lanes along Logan Ave between I-805 and Euclid Ave
<b>E</b>	New sidewalk along Kelton Rd (west side) from Bethune Ct to Bayview Heights Way, where missing
<b>F</b>	Bike lanes and bike route along Federal Blvd from Euclid Ave to Home Ave
<b>G</b>	New traffic signal at Euclid Ave and Castana St
<b>H</b>	New traffic signal at Euclid Ave and Lise Ave
<b>I</b>	New traffic signal at Bayview Heights Way and SR-94 Westbound Ramps
<b>J</b>	New traffic signal at Kelton Rd and SR-94 Eastbound Ramps

The Mid-City Communities Plan is being updated and for information on how you can get involved in the planning process visit: <https://www.sandiego.gov/planning/mid-city-communities-plan-update>. It is important to note that this plan update could modify projects and/or add new mobility recommendations.