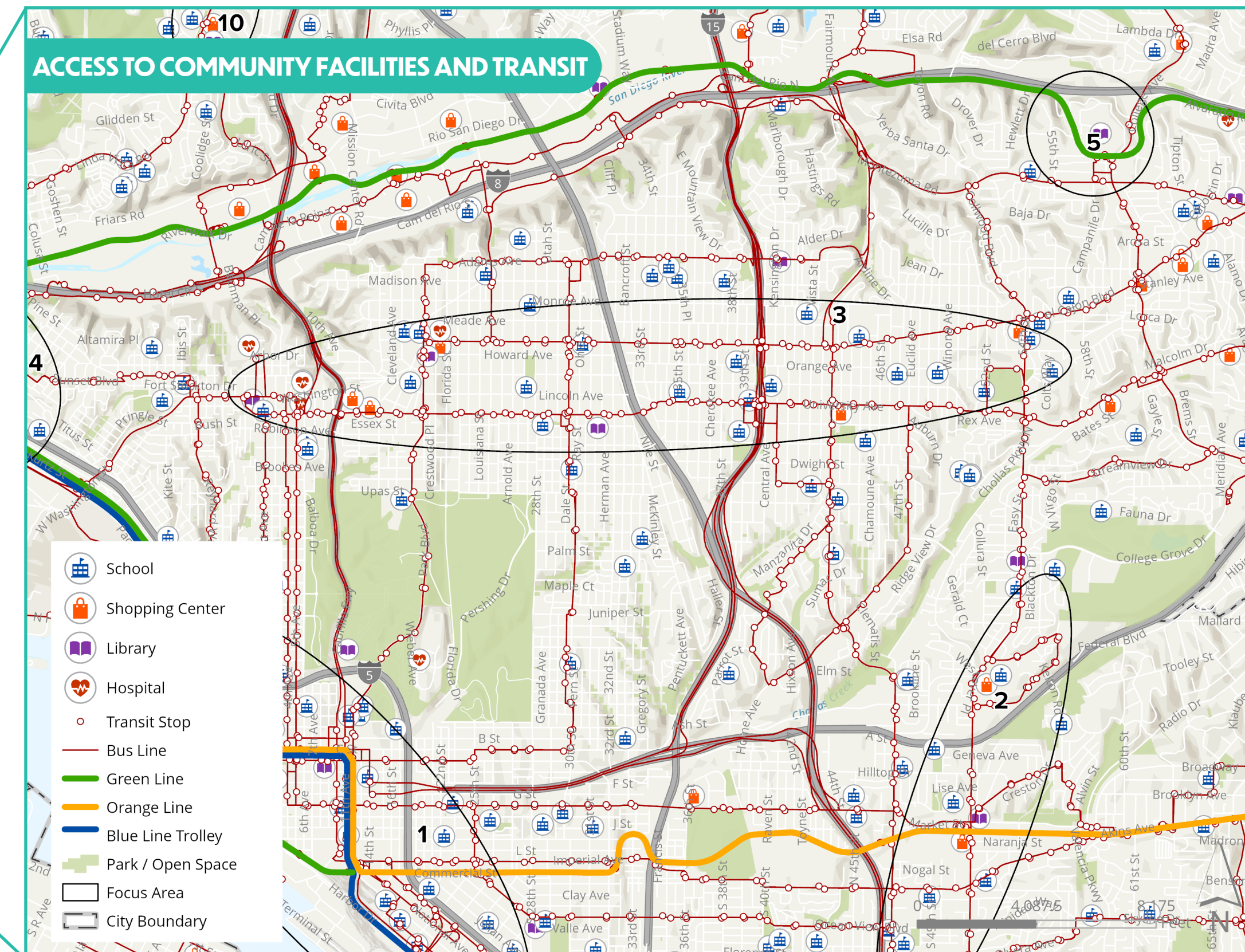
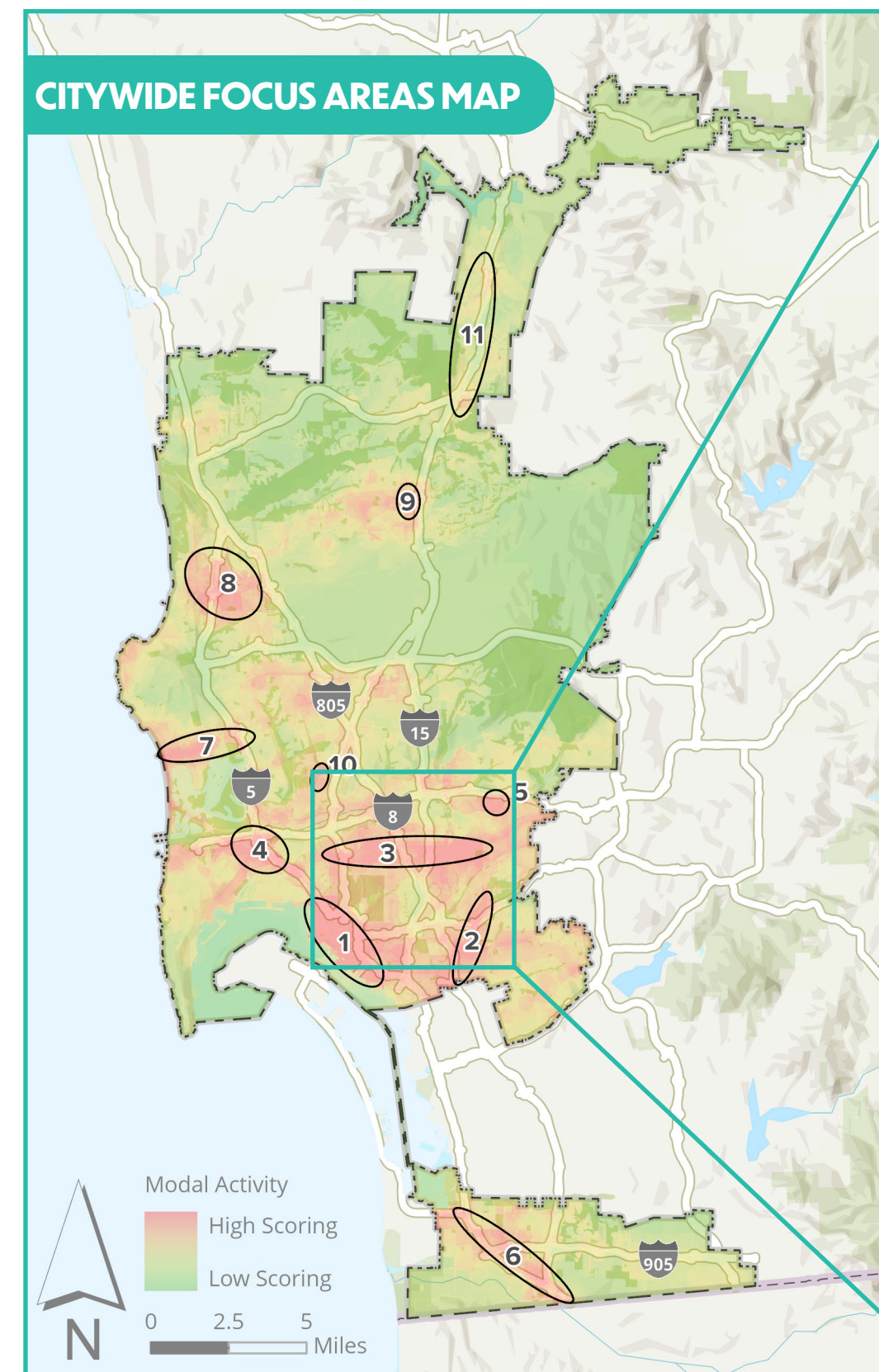


COMMUNITY SETTING

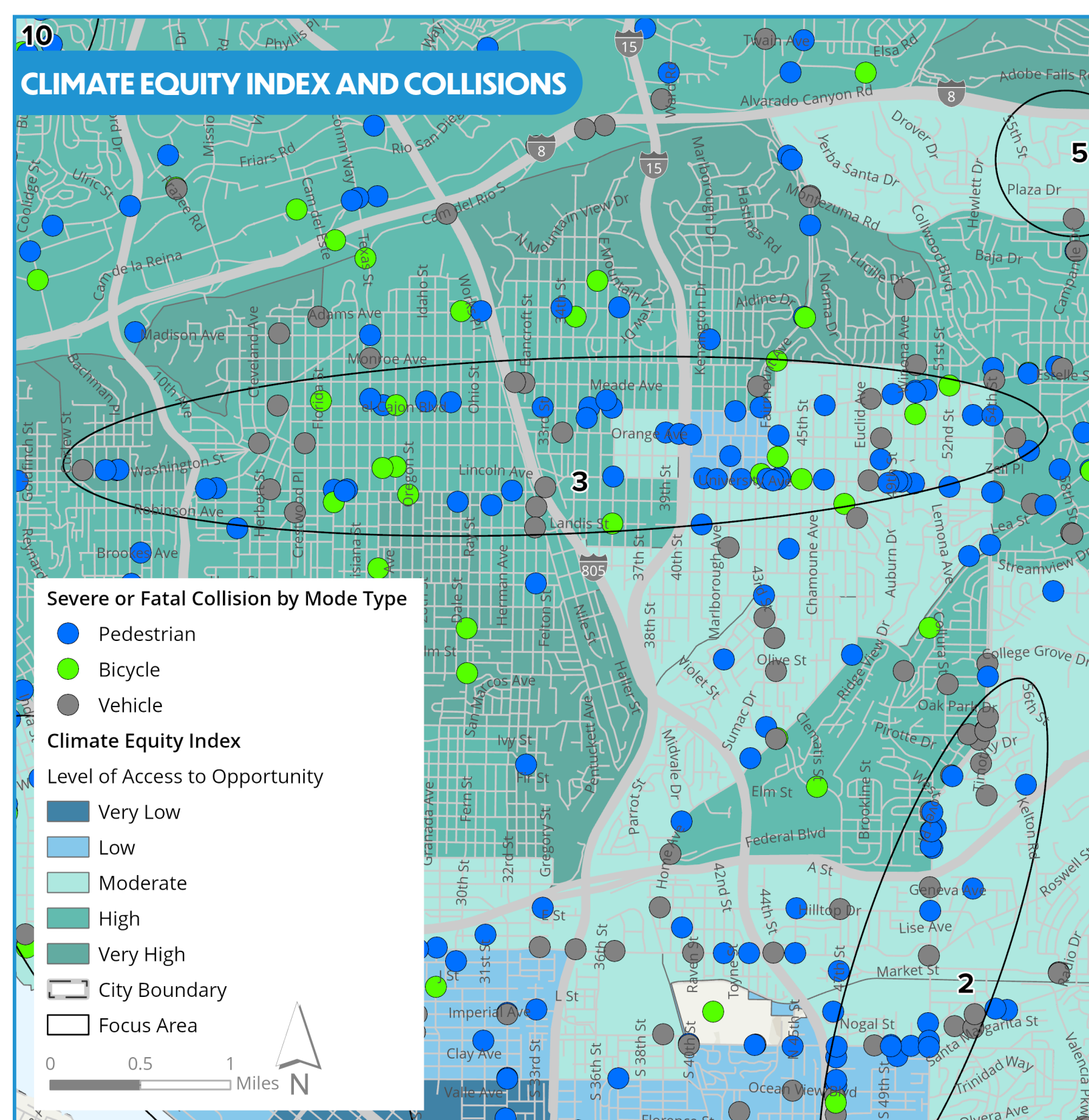
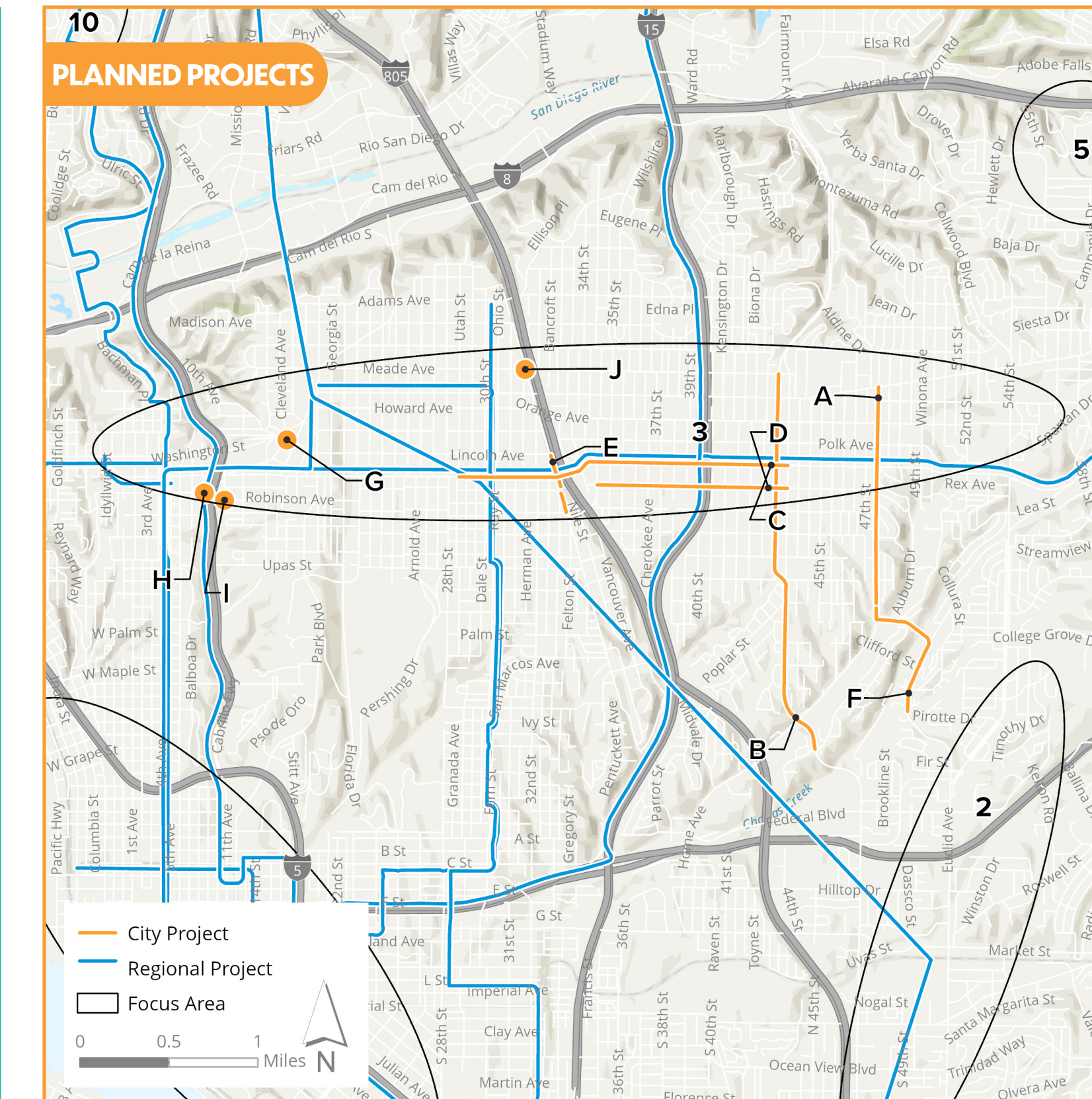
THE MOBILITY MASTER PLAN FOCUS AREA #3 INCLUDES PARTS OF UPTOWN, NORTH PARK, AND CITY HEIGHTS. THIS AREA CAPTURES SEGMENTS OF INTERSTATE-805, AND STATE ROUTE-15. MOBILITY CHALLENGES IN THIS AREA ARE DUE TO HIGHER DENSITIES, BUSTLING COMMERCIAL CORRIDORS, AND TRAFFIC CONGESTION ON MAIN THOROUGHFARES.

	POPULATION	FOCUS AREA: 82,000 CITY OF SAN DIEGO: 1,386,300
	MEDIAN HOUSEHOLD INCOME	FOCUS AREA: \$62,000 CITY OF SAN DIEGO: \$88,000
	MEDIAN AGE	FOCUS AREA: 34 CITY OF SAN DIEGO: 36
	PERCENTAGE OF WORKERS DRIVING ALONE	FOCUS AREA: 67% CITY OF SAN DIEGO: 69%
	PERCENTAGE OF HOUSEHOLDS WITH NO VEHICLE	FOCUS AREA: 10% CITY OF SAN DIEGO: 6%

FOCUS AREA ANALYSIS

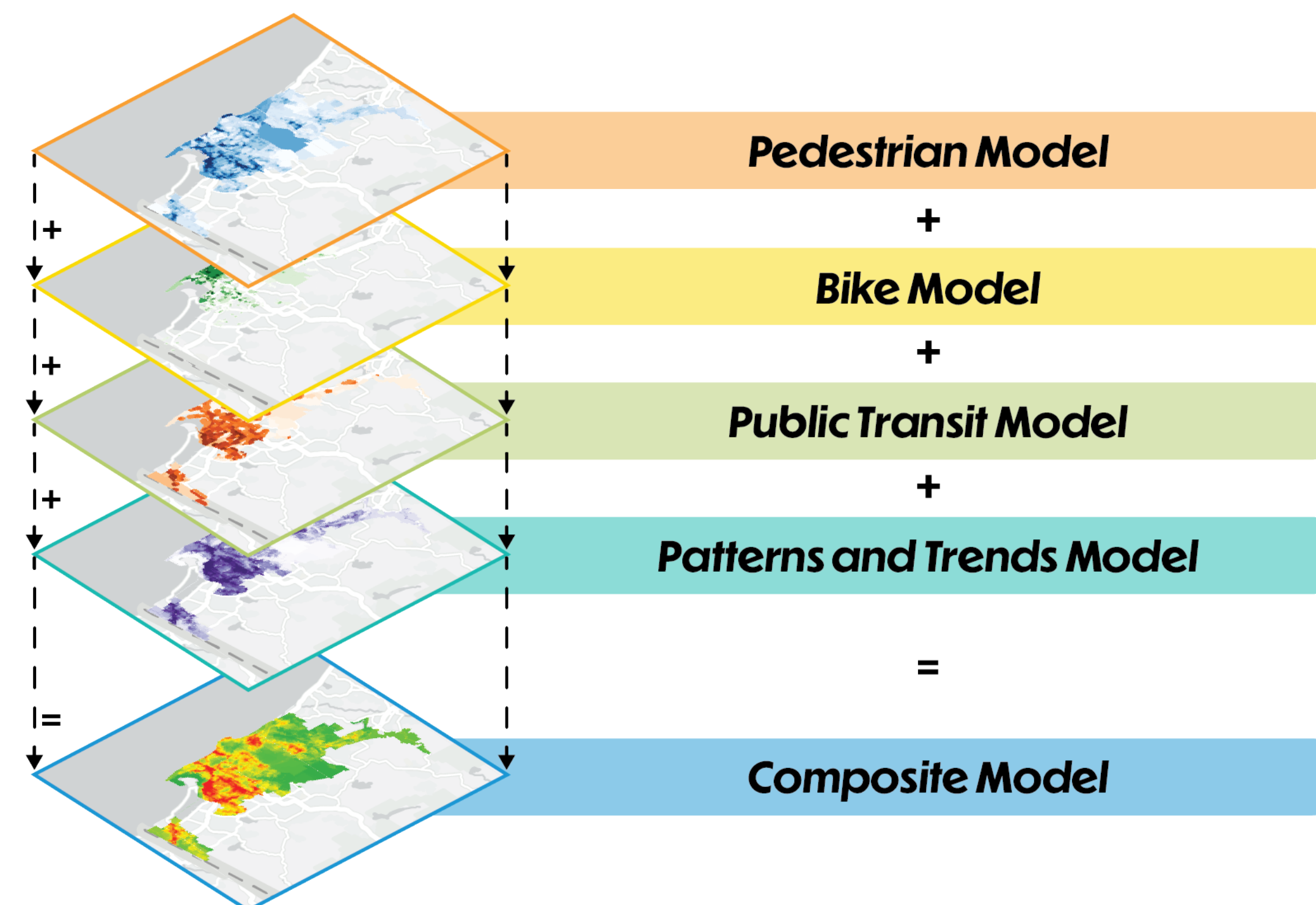


MOBILITY PROJECTS



MULTIPLE DATASETS WERE COMBINED TO DEVELOP THE MOBILITY MASTER PLAN FOCUS AREAS:

- » PERCENTAGE OF WORKERS THAT COMMUTE BY MODE TYPE
- » ALL CRASHES BY MODE TYPE
- » PEDESTRIAN PROPENSITY ANALYSIS
- » BICYCLE PROPENSITY ANALYSIS
- » TRANSIT PRIORITY AREAS
- » NUMBER OF SEVERE AND FATAL COLLISIONS
- » CLIMATE EQUITY INDEX
- » BLUEPRINT DEVELOPMENT PROPENSITY MODEL
- » POPULATION DENSITY
- » POPULATION GROWTH
- » COMMUNITIES OF CONCERN
- » SANDAG SMART GROWTH AREAS
- » BLUEPRINT SAN DIEGO
- » HOUSEHOLDS WITH NO VEHICLE OWNERSHIP
- » PROXIMITY TO MAJOR POINTS OF INTEREST



City Projects	Description
A	Curb, gutter, sidewalk, curb ramps, landscaping, roadway restoration, striping, and traffic calming installations on Euclid Ave from 300 ft north of Redwood St to El Cajon Blvd
B	Bike lanes and bike route along 43rd St between Meade Ave and Ridge View Dr
C	Bike lanes and bike route along University Ave between Utah St to Fairmount Ave
D	Bike lanes along Wightman St from Swift Ave to Fairmount Ave
E	New sidewalk along Boundary St (east side) between Lincoln Ave and University Ave, where missing
F	Three-lane collector and bike route along Euclid Ave from El Cajon Blvd to Chollas Creek
G	New traffic signal at Cleveland Ave and Lincoln Ave
H	New traffic signal at Eighth Ave and Robinson Ave
I	New traffic signal at Tenth Ave and Robinson Ave
J	New traffic signal at Boundary St/I-805 Southbound Ramps

*A focused amendment of the Uptown Community Plan for the Hillcrest Area is underway. Please visit planhillcrest.org to find further information. The Mid-City Communities Plan is also being updated and for information on how you can get involved in the planning process visit <https://www.sandiego.gov/planning/mid-city-communities-plan-update>.

It is important to note that both these plan updates could modify projects and/or add new mobility recommendations.