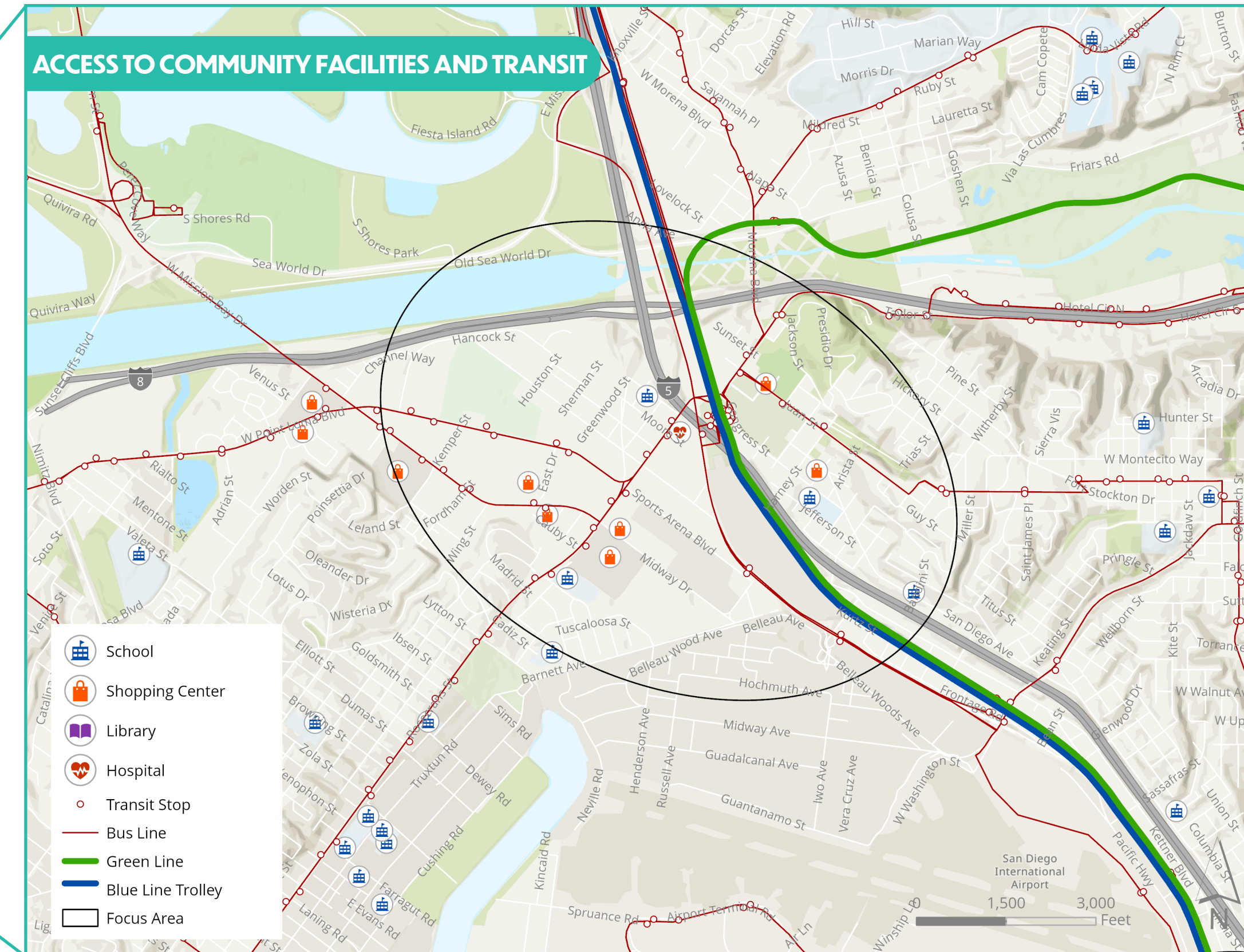
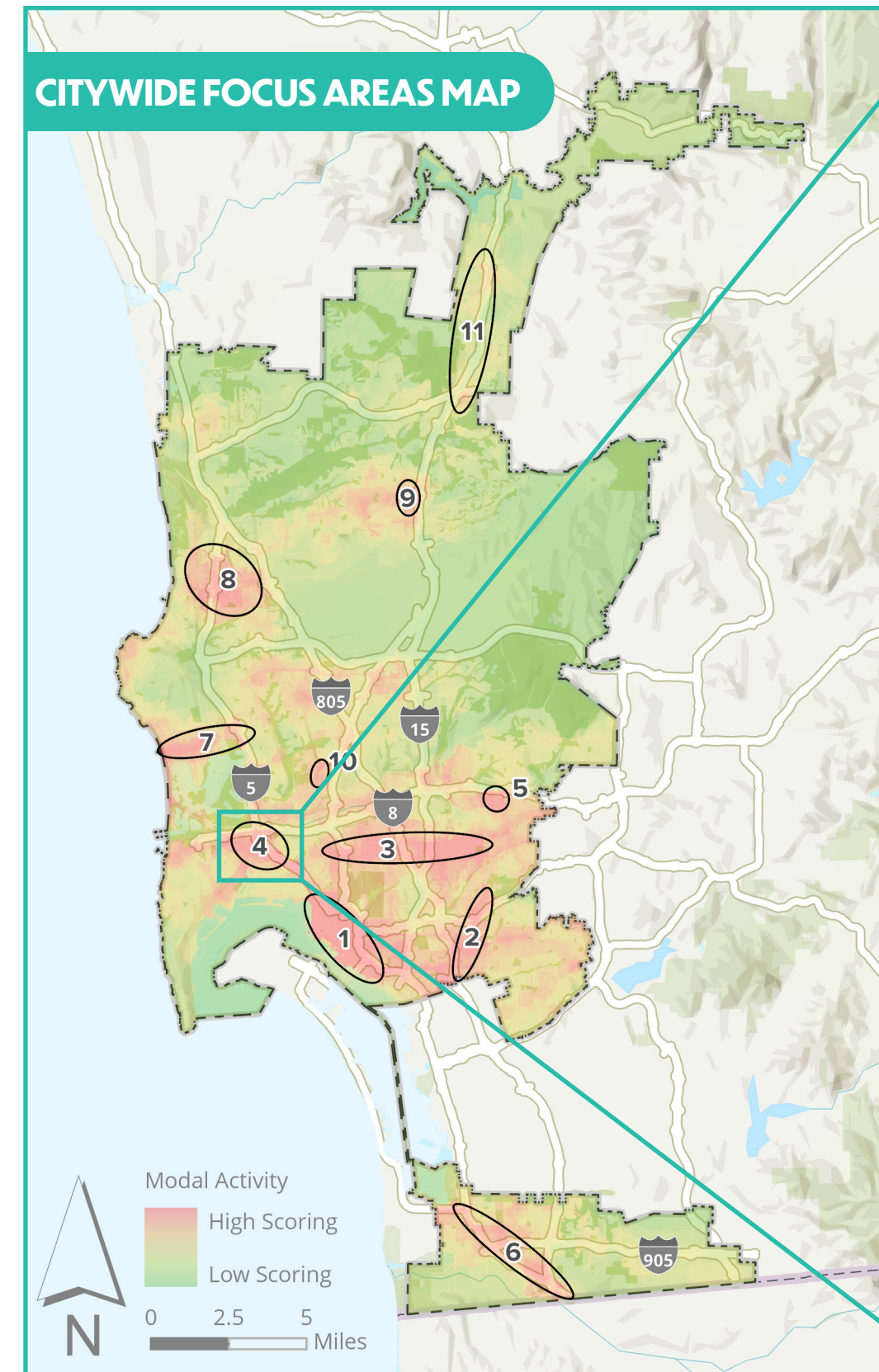


COMMUNITY SETTING

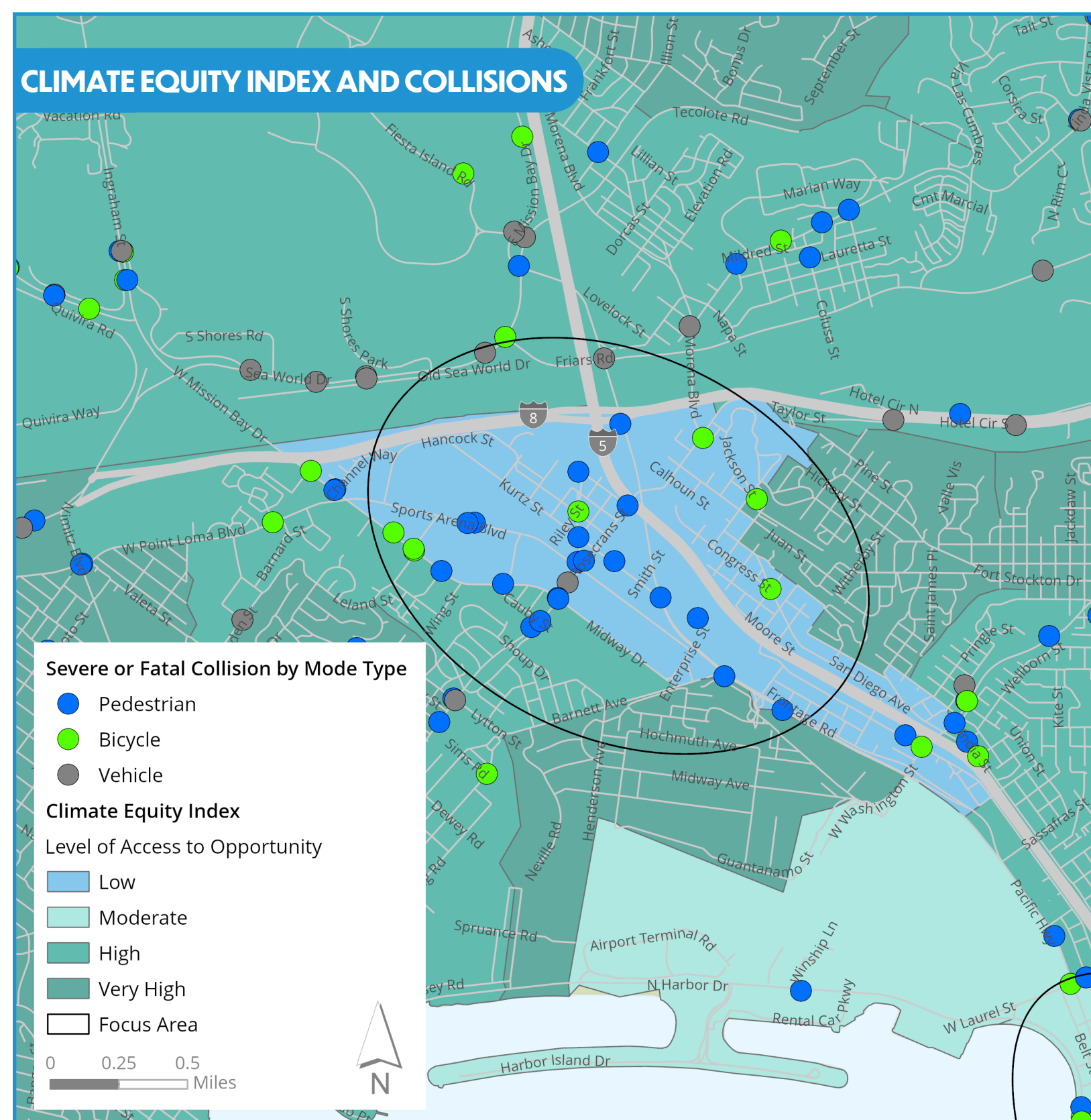
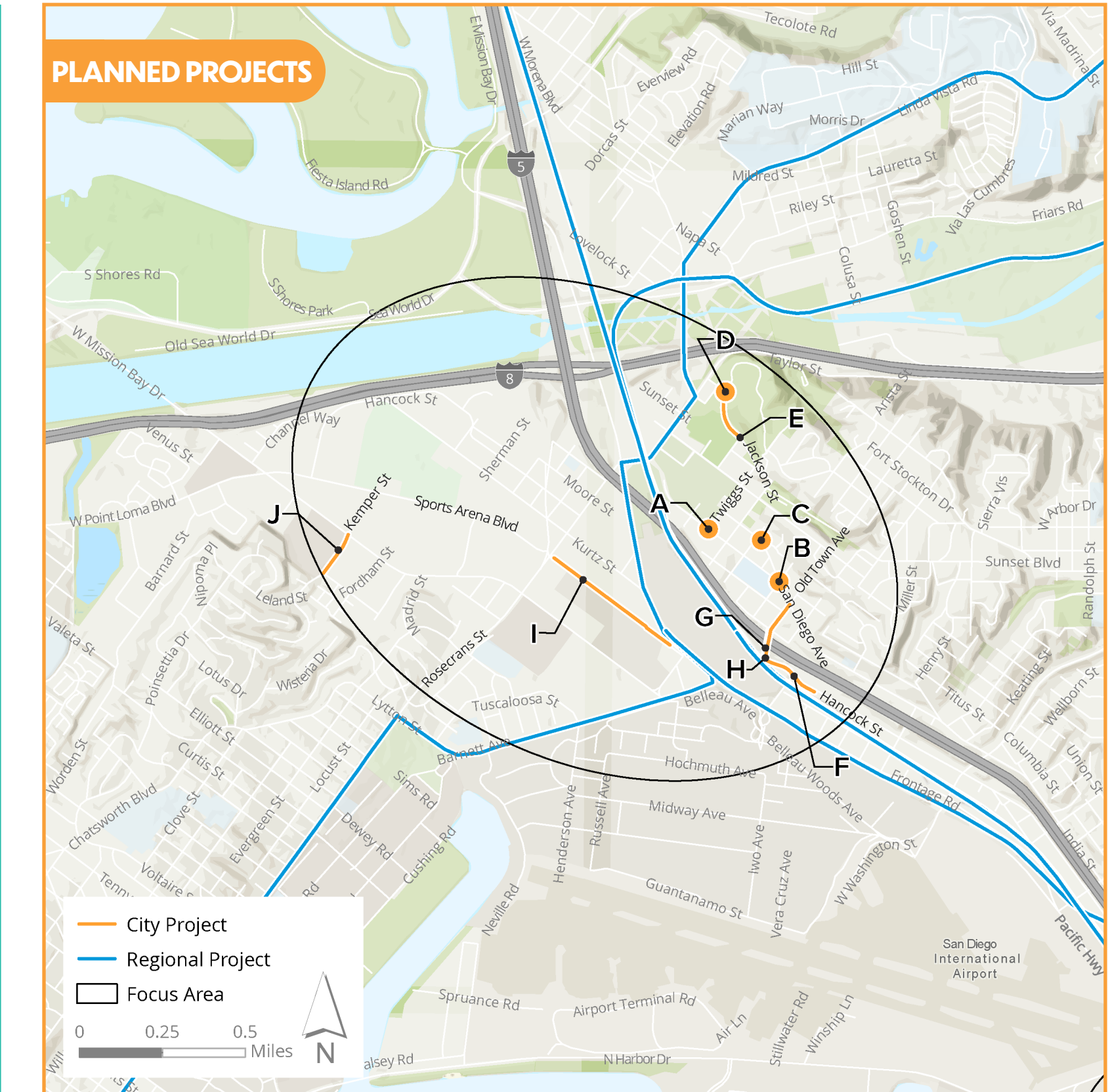
MOBILITY MASTER PLAN FOCUS AREA #4 INCLUDES PARTS OF UPTOWN, OLD TOWN SAN DIEGO, AND MIDWAY-PACIFIC HIGHWAY. THIS AREA CAPTURES SEGMENTS OF INTERSTATE-8 AND INTERSTATE-5. MOBILITY CHALLENGES IN THIS AREA ARE DUE TO THE LARGE SUPERBLOCKS AND INDUSTRIAL AND MILITARY LAND USES THAT CREATE LIMITED ACCESS AND CONNECTIVITY. THE OLD TOWN TRANSIT CENTER STATION PROVIDES ACCESS TO THE GREEN AND BLUE LINE TROLLEYS AND THE PACIFIC SURFLINER.

	POPULATION	FOCUS AREA: 7,000 CITY OF SAN DIEGO: 1,386,300
	MEDIAN HOUSEHOLD INCOME	FOCUS AREA: \$65,000 CITY OF SAN DIEGO: \$88,000
	MEDIAN AGE	FOCUS AREA: 36 CITY OF SAN DIEGO: 36
	PERCENTAGE OF WORKERS DRIVING ALONE	FOCUS AREA: 53% CITY OF SAN DIEGO: 69%
	PERCENTAGE OF HOUSEHOLDS WITH NO VEHICLE	FOCUS AREA: 13% CITY OF SAN DIEGO: 6%

FOCUS AREA ANALYSIS

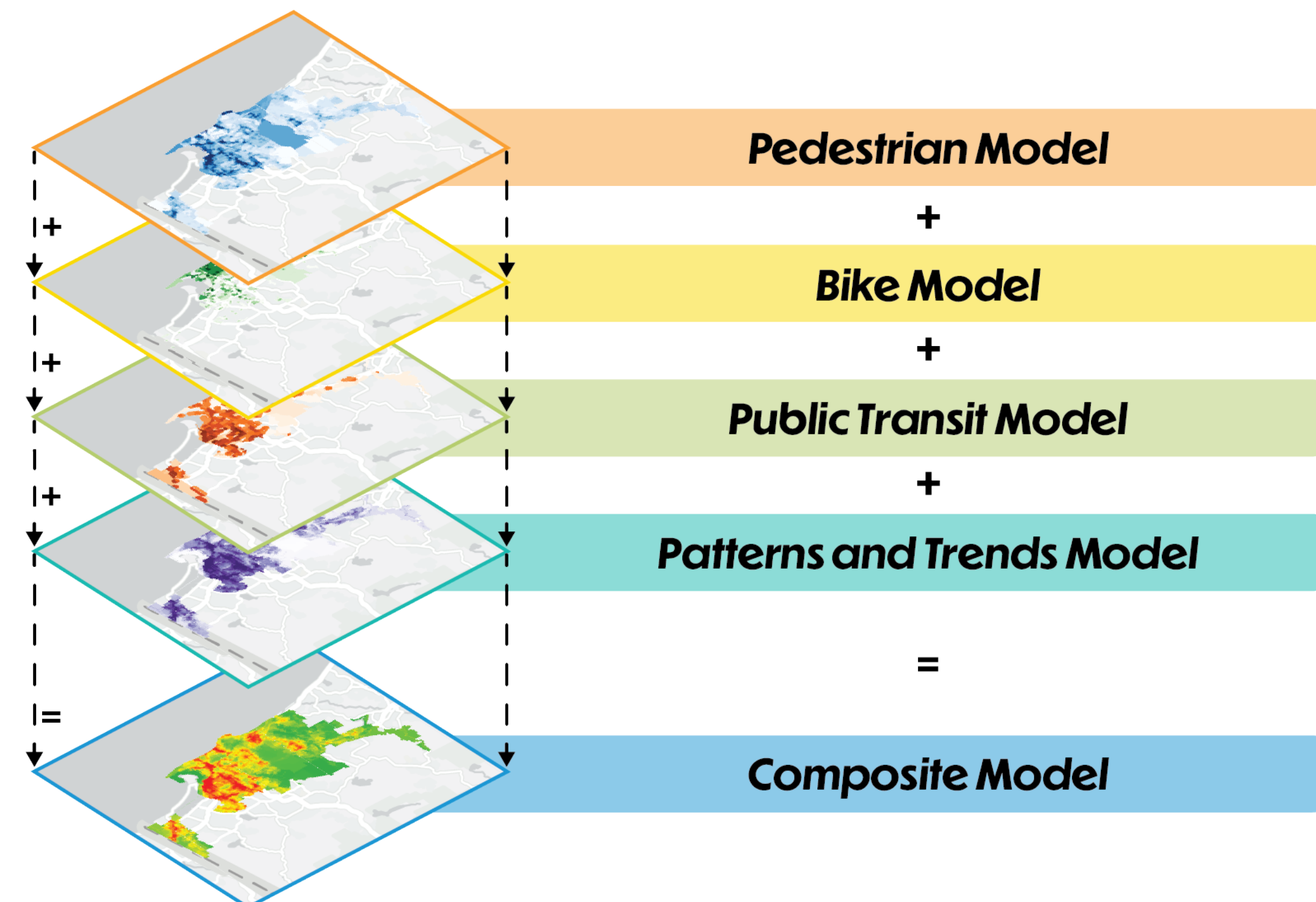


MOBILITY PROJECTS



MULTIPLE DATASETS WERE COMBINED TO DEVELOP THE MOBILITY MASTER PLAN FOCUS AREAS:

- » PERCENTAGE OF WORKERS THAT COMMUTE BY MODE TYPE
- » ALL CRASHES BY MODE TYPE
- » PEDESTRIAN PROPENSITY ANALYSIS
- » BICYCLE PROPENSITY ANALYSIS
- » TRANSIT PRIORITY AREAS
- » NUMBER OF SEVERE AND FATAL COLLISIONS
- » CLIMATE EQUITY INDEX
- » BLUEPRINT DEVELOPMENT PROPENSITY MODEL
- » POPULATION DENSITY
- » POPULATION GROWTH
- » COMMUNITIES OF CONCERN
- » SANDAG SMART GROWTH AREAS
- » BLUEPRINT SAN DIEGO
- » HOUSEHOLDS WITH NO VEHICLE OWNERSHIP
- » PROXIMITY TO MAJOR POINTS OF INTEREST



City Projects	Description
A	Bulb-outs at all four corners on Congress St and Twiggs St
B	All-way stop control, bulb-outs, and wider sidewalks at the Congress St/San Diego Ave/Ampudia St intersection
C	Pedestrian refuge island on the southern leg of Linwood St and San Diego Ave
D	Bulb-outs, new sidewalks, intersection reconfiguration, and crosswalks at Presidio Dr and Jackson St
E	New sidewalk along Jackson St (west side) between Presidio Dr and Mason St, where missing
F	New sidewalk along Hancock St (west side) between Old Town Ave and Witherby St and new sidewalk along Hancock St (west side) traversing from Witherby St, where missing
G	New sidewalk along Old Town Ave (north side) between Moore St and Hancock St, where missing
H	Bike lanes along Old Town Ave from Hancock St to San Diego Ave
I	Multi-use urban path and pedestrian-scale lighting along Sports Arena Blvd (northeast side) between Rosecrans St and Pacific Highway
J	Bike lanes along Kemper St from Midway Dr to Kenyon St