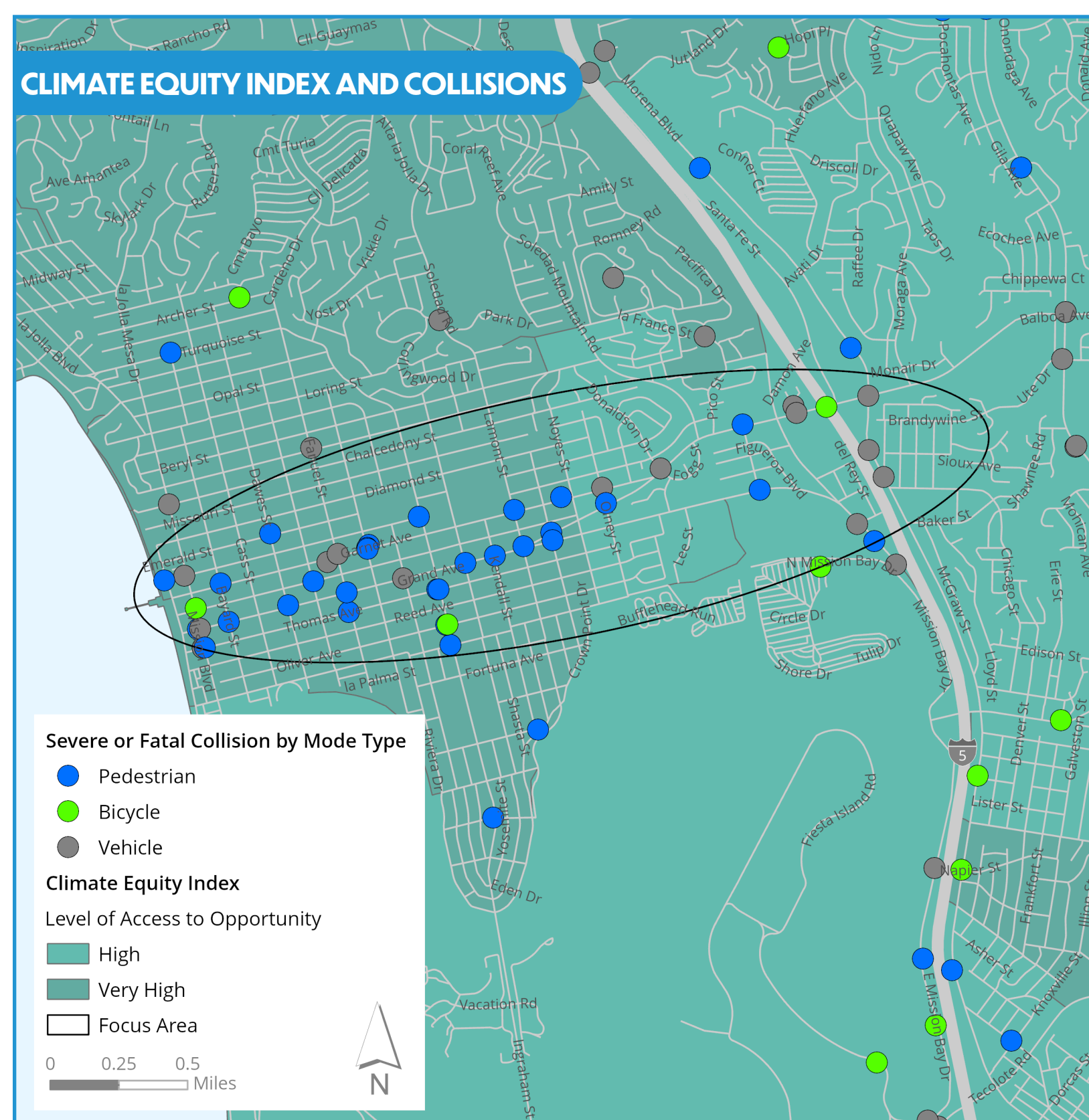
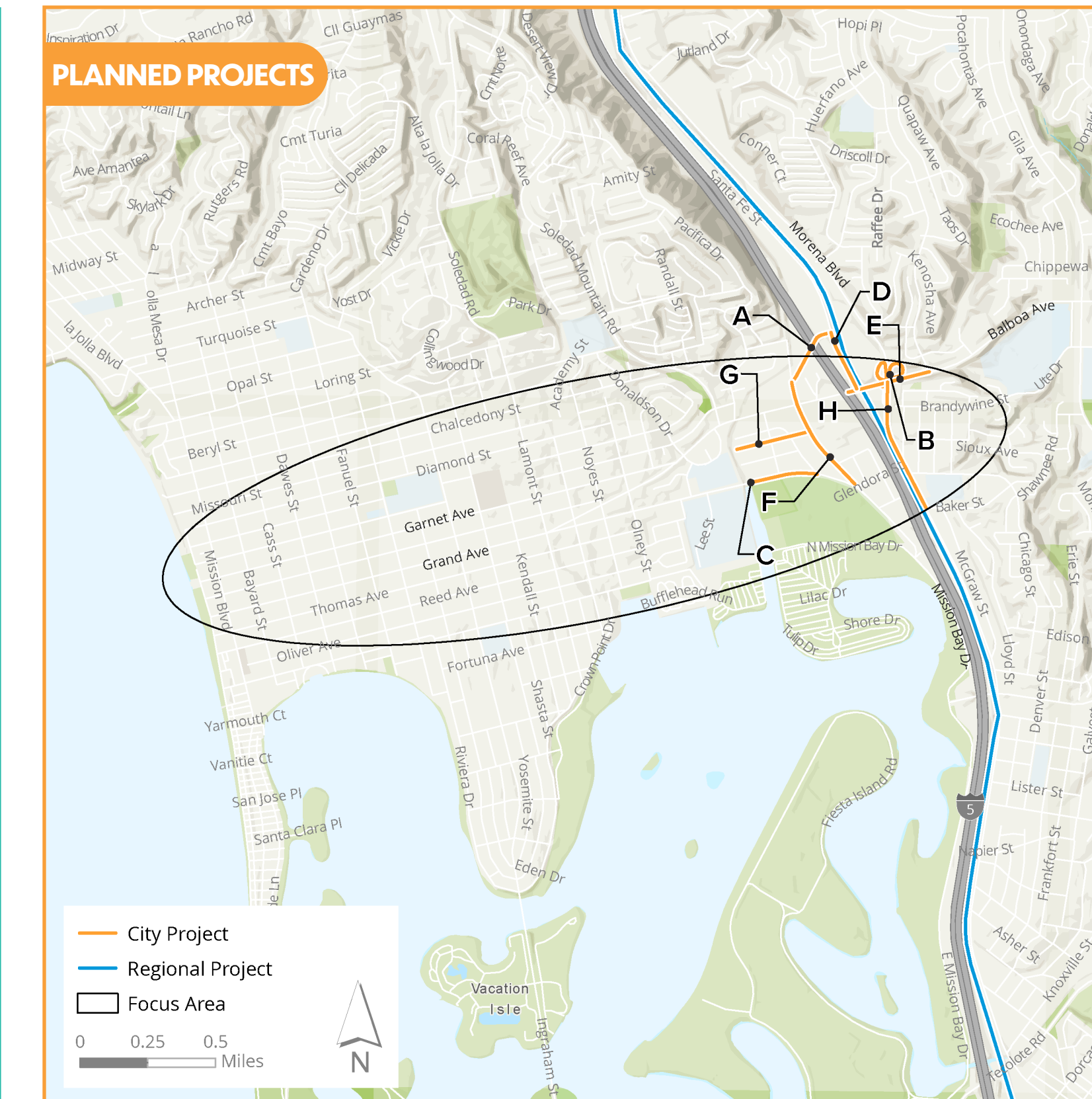
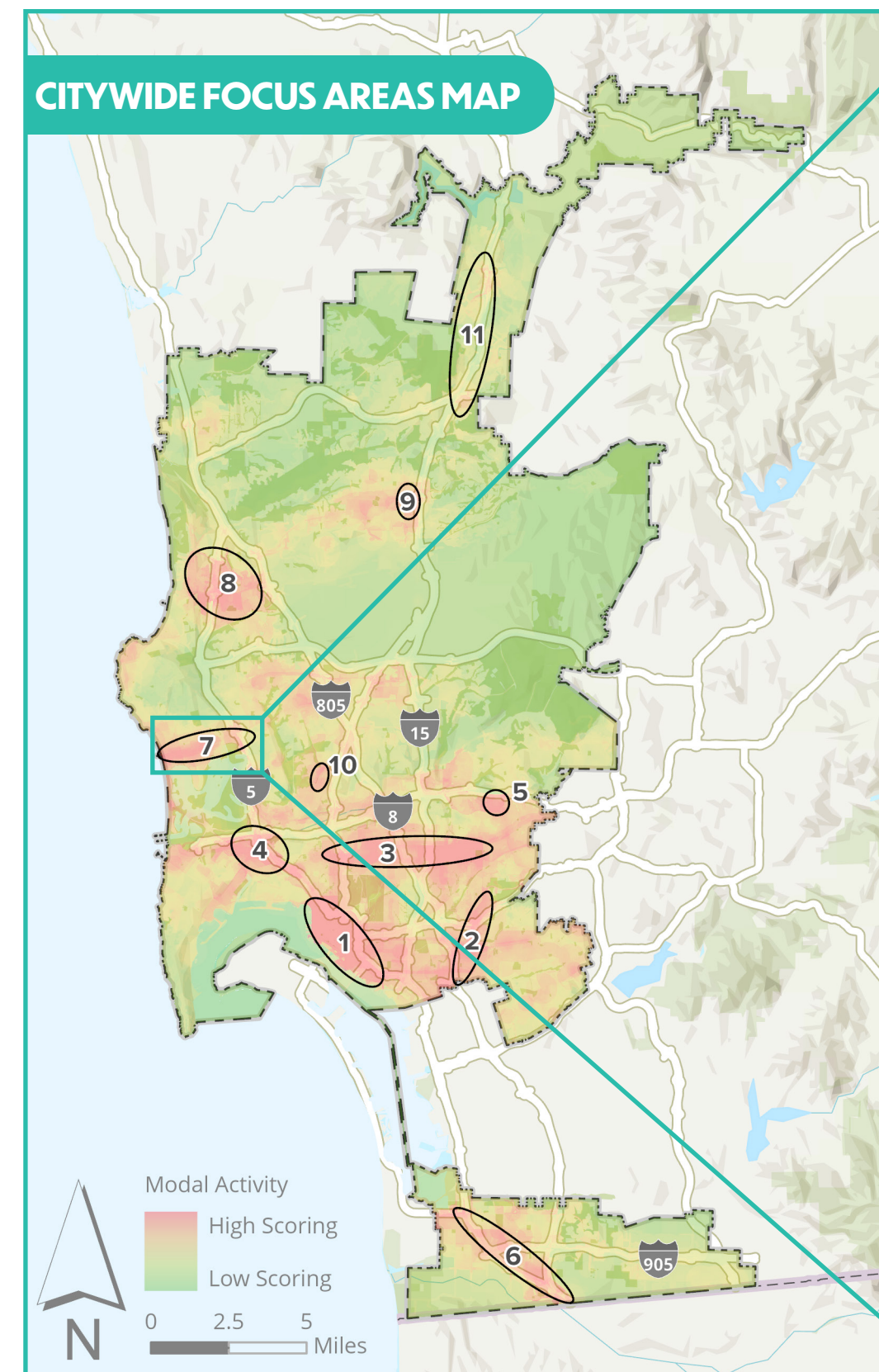


COMMUNITY SETTING

THE MOBILITY MASTER PLAN FOCUS AREA #7 INCLUDES PARTS OF PACIFIC BEACH AND CLAIREMONT MESA. THIS AREA CAPTURES SEGMENTS OF INTERSTATE-5. PACIFIC BEACH IS A MAJOR TOURIST DESTINATION, AND ONE OF THE BUSIEST BEACH AREAS IN SAN DIEGO. MOBILITY CHALLENGES HERE ARE DUE TO THE LARGE CROWDS OF LOCALS AND TOURISTS THE AREA DRAWS IN AND LIMITED FIRST/LAST MILE CONNECTIONS FROM TRANSIT, SPECIFICALLY THE BALBOA AVENUE STATION.

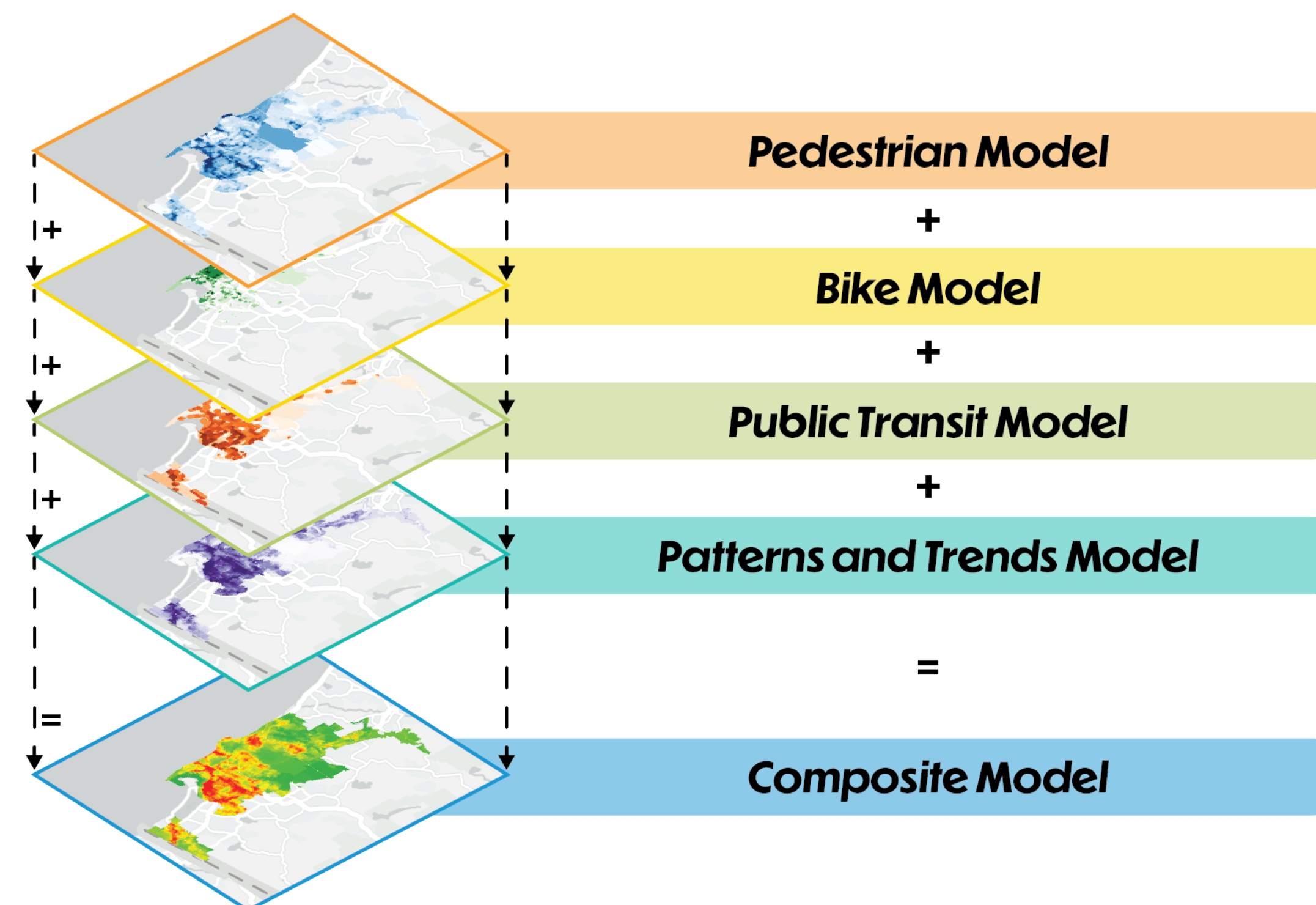
	POPULATION	FOCUS AREA: 23,000 CITY OF SAN DIEGO: 1,386,300
	MEDIAN HOUSEHOLD INCOME	FOCUS AREA: \$85,000 CITY OF SAN DIEGO: \$88,000
	MEDIAN AGE	FOCUS AREA: 32 CITY OF SAN DIEGO: 36
	PERCENTAGE OF WORKERS DRIVING ALONE	FOCUS AREA: 69% CITY OF SAN DIEGO: 69%
	PERCENTAGE OF HOUSEHOLDS WITH NO VEHICLE	FOCUS AREA: 3% CITY OF SAN DIEGO: 6%

FOCUS AREA ANALYSIS



MULTIPLE DATASETS WERE COMBINED TO DEVELOP THE MOBILITY MASTER PLAN FOCUS AREAS:

- » PERCENTAGE OF WORKERS THAT COMMUTE BY MODE TYPE
- » ALL CRASHES BY MODE TYPE
- » PEDESTRIAN PROPENSITY ANALYSIS
- » BICYCLE PROPENSITY ANALYSIS
- » TRANSIT PRIORITY AREAS
- » NUMBER OF SEVERE AND FATAL COLLISIONS
- » CLIMATE EQUITY INDEX
- » BLUEPRINT DEVELOPMENT PROPENSITY MODEL
- » POPULATION DENSITY
- » POPULATION GROWTH
- » COMMUNITIES OF CONCERN
- » SANDAG SMART GROWTH AREAS
- » BLUEPRINT SAN DIEGO
- » HOUSEHOLDS WITH NO VEHICLE OWNERSHIP
- » PROXIMITY TO MAJOR POINTS OF INTEREST



City Projects	Description
A	Pedestrian improvements along Damon Ave, such as pedestrian refuge areas at Damon Ave and Santa Fe St and removal of free right turn movements at Damon Ave and Mission Bay Dr
B	Provide approximately 1400' of sidewalk along Morena Blvd and Balboa Ave interchange Off/On-Ramps in Clairemont Mesa where missing
C	Pedestrian improvements along Grand Ave, such as enhanced crossings at signalized intersections and streetscape enhancements at Mission Bay Drive and Grand Ave
D	Shared-use pedestrian/bicycle facility along Santa Fe St (east side) from Garnet Ave to Damon Ave
E	Corridor improvements along Balboa Ave/Garnet Ave between Morena Blvd and I-5 underpass, such as multi-use paths, pedestrian-scale lighting, enhanced crossings, protected intersection treatments, and design features that slow vehicular speeds
F	Pedestrian improvements along Mission Bay Dr, such as multi-use paths, pedestrian-scale lighting, enhanced pedestrian crossings, and enhanced streetscape
G	Corridor improvements along Magnolia Ave, including traffic calming measures and enhanced crossings and lighting at the intersection with Mission Bay Dr
H	Pedestrian improvements along Morena Blvd, such as wider sidewalks and removal of free-right movements at intersections with Balboa Ave

The Clairemont Community Plan is being updated and for information visit: <https://www.clairemontplan.org/>
It is important to note that this plan update could modify projects and/or add new mobility recommendations.