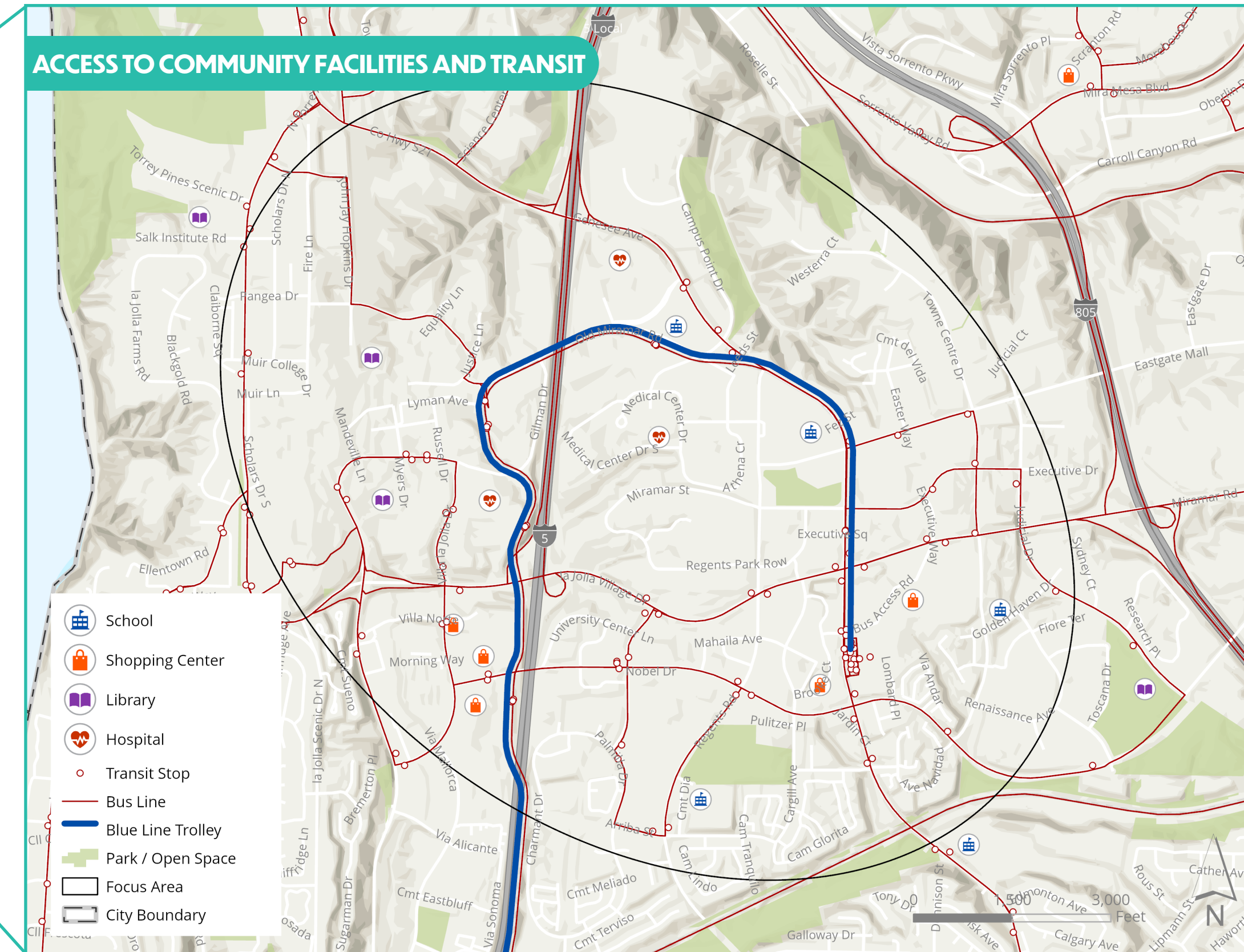
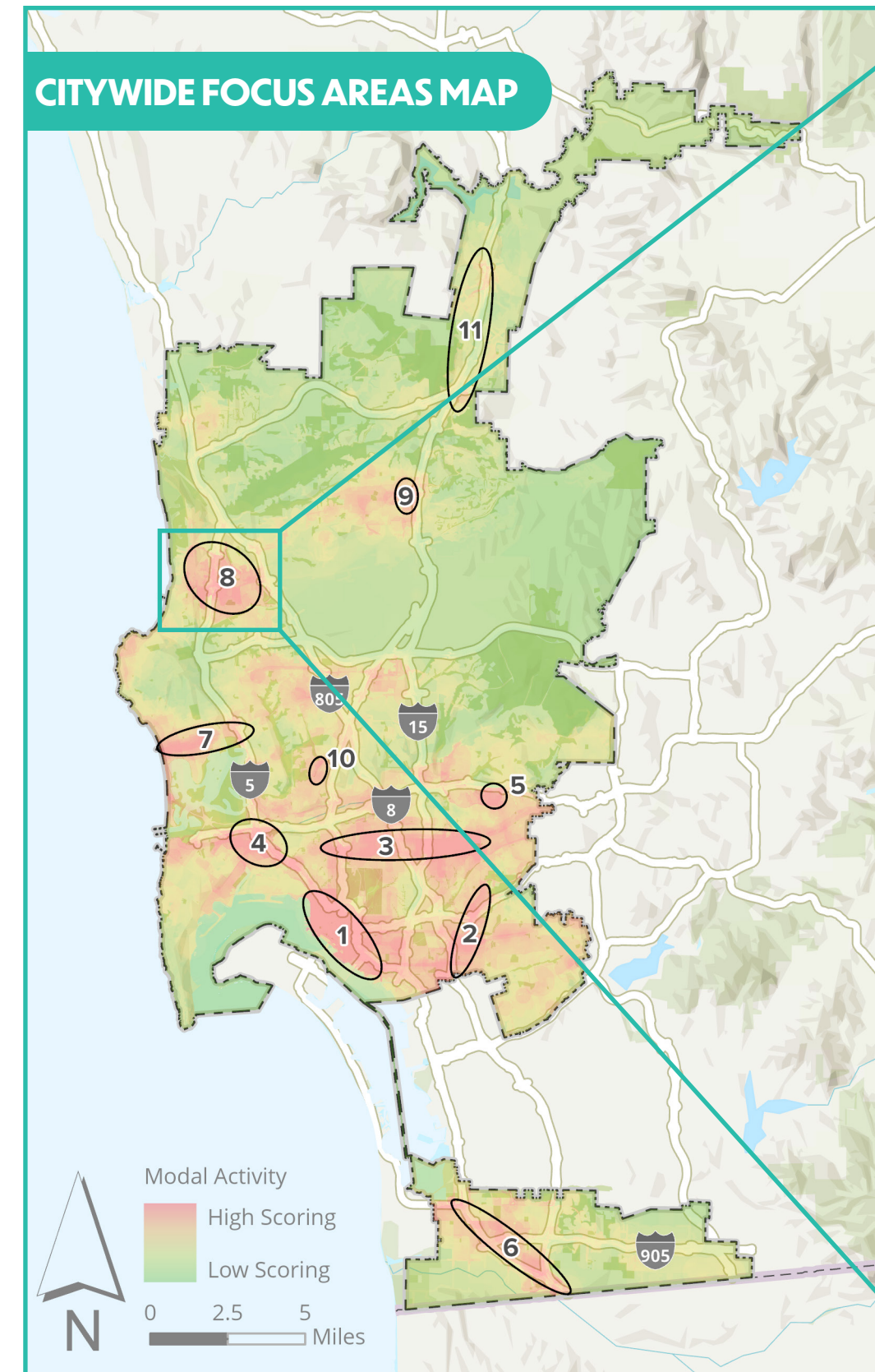


COMMUNITY SETTING

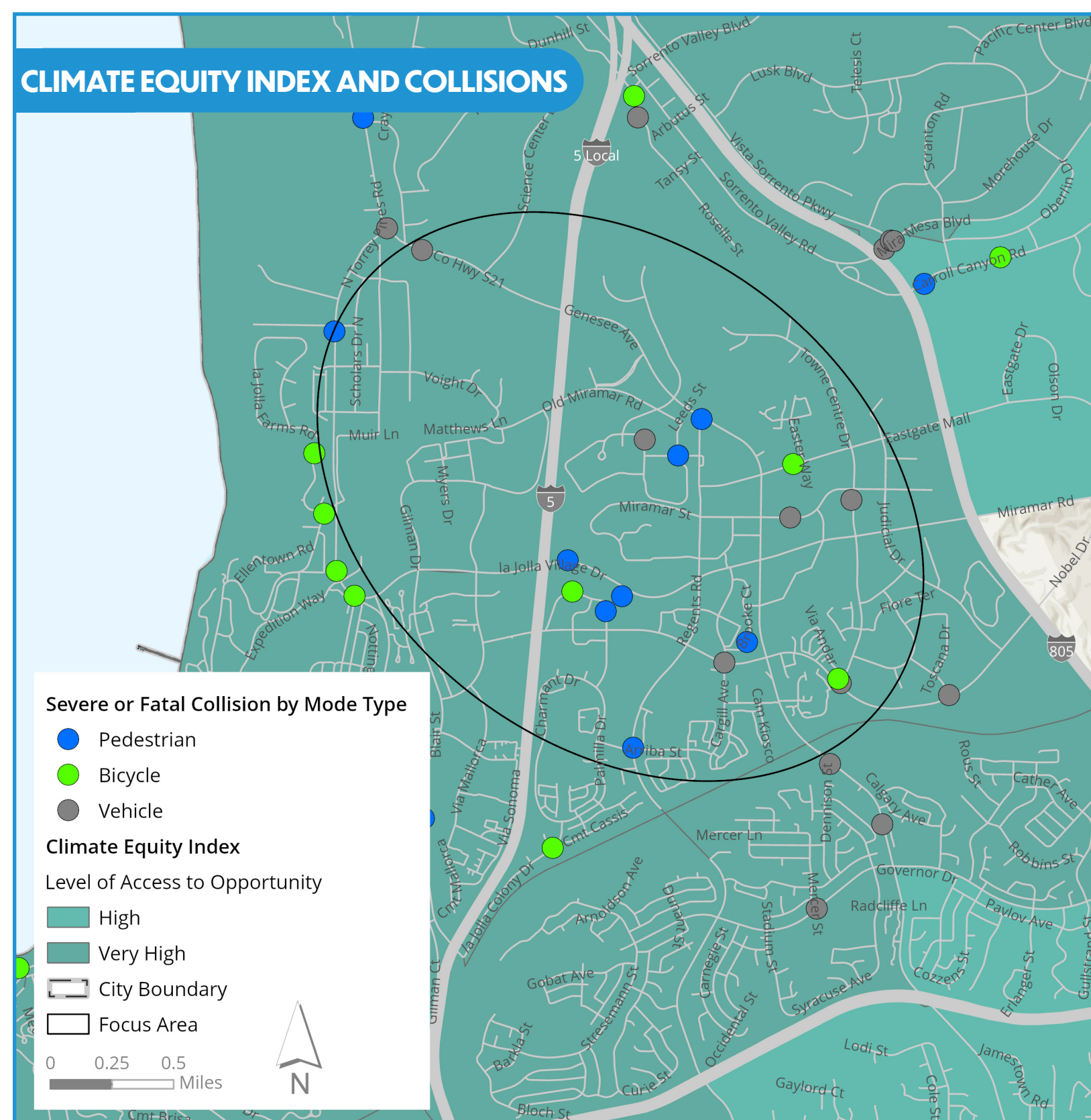
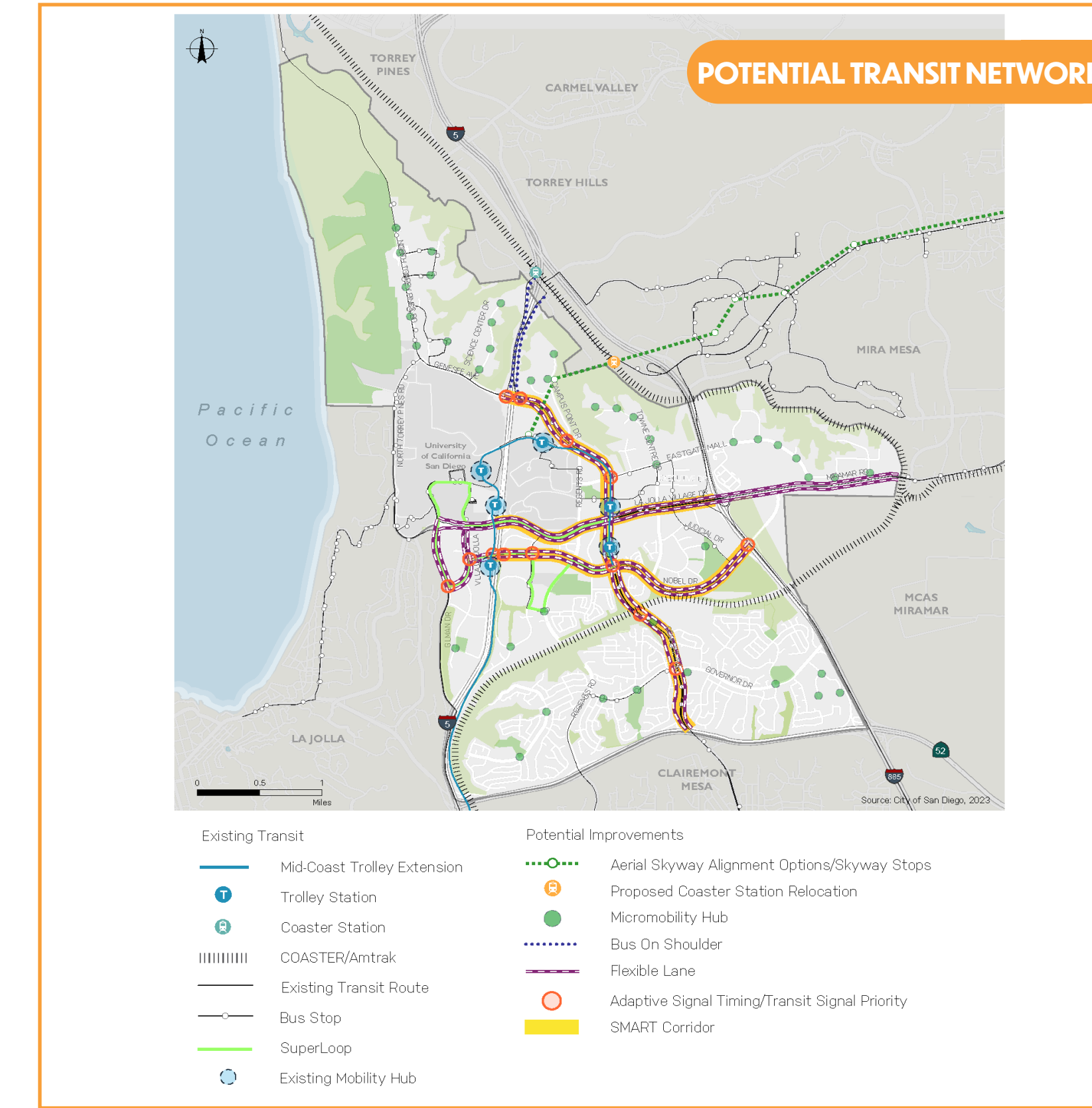
MOBILITY MASTER PLAN FOCUS AREA #8 INCLUDES PARTS OF THE UNIVERSITY PLAN AREA. THIS AREA CAPTURES A SEGMENT OF INTERSTATE-5. THE UNIVERSITY OF CALIFORNIA SAN DIEGO (UCSD) IS LOCATED IN THIS FOCUS AREA. IT POSES UNIQUE MOBILITY CHALLENGES DUE TO THE UNIVERSITY CAMPUS AND THE NEED FOR SAFE AND EFFICIENT TRANSPORTATION OPTIONS FOR STUDENTS, EMPLOYEES, AND RESIDENTS.

| | | |
|--|---|--|
| | POPULATION | FOCUS AREA: 31,000 CITY OF SAN DIEGO: 1,386,300 |
| | MEDIAN HOUSEHOLD INCOME | FOCUS AREA: \$71,000 CITY OF SAN DIEGO: \$88,000 |
| | MEDIAN AGE | FOCUS AREA: 24 CITY OF SAN DIEGO: 36 |
| | PERCENTAGE OF WORKERS DRIVING ALONE | FOCUS AREA: 55% CITY OF SAN DIEGO: 69% |
| | PERCENTAGE OF HOUSEHOLDS WITH NO VEHICLE | FOCUS AREA: 10% CITY OF SAN DIEGO: 6% |

FOCUS AREA ANALYSIS

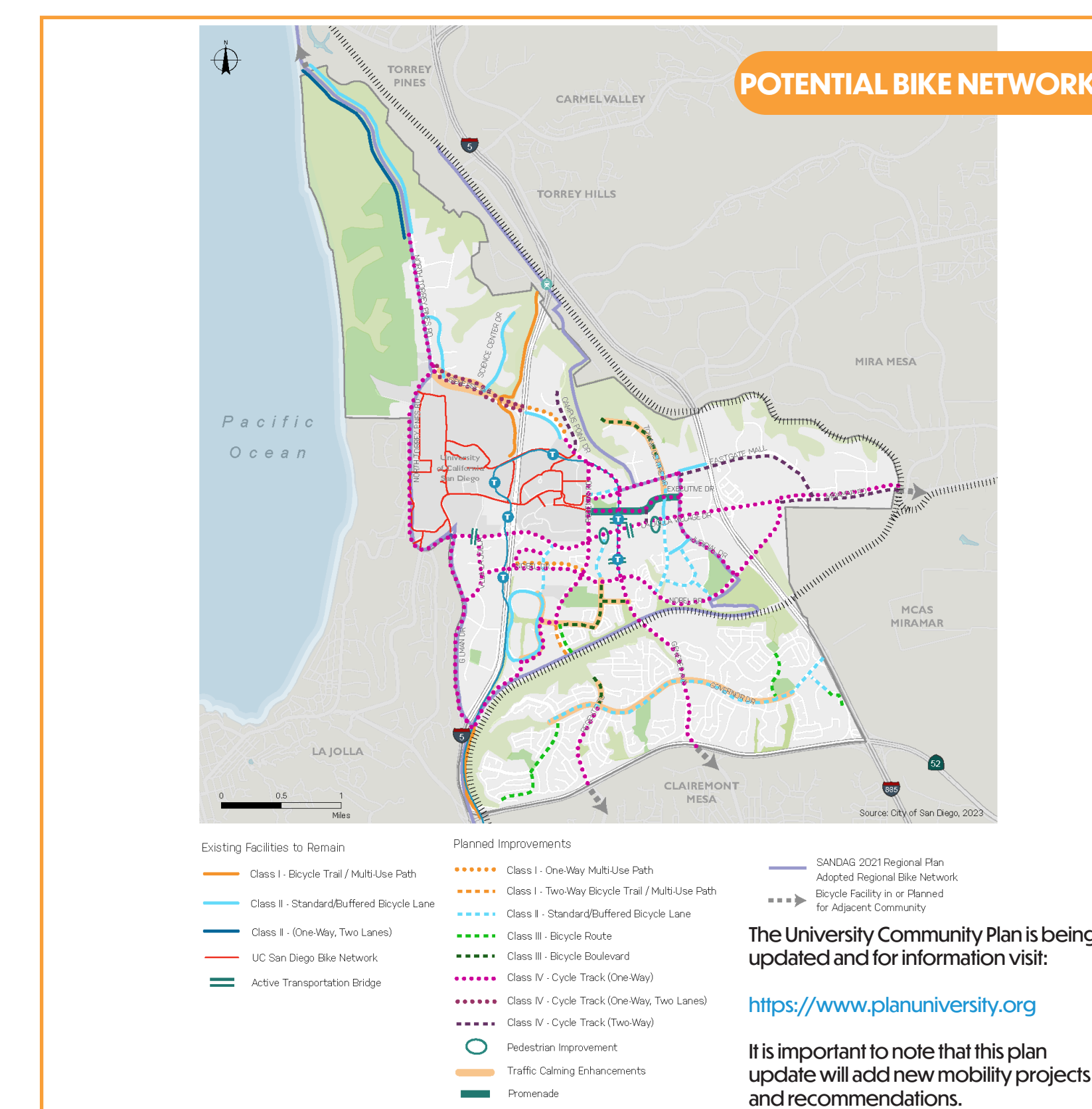
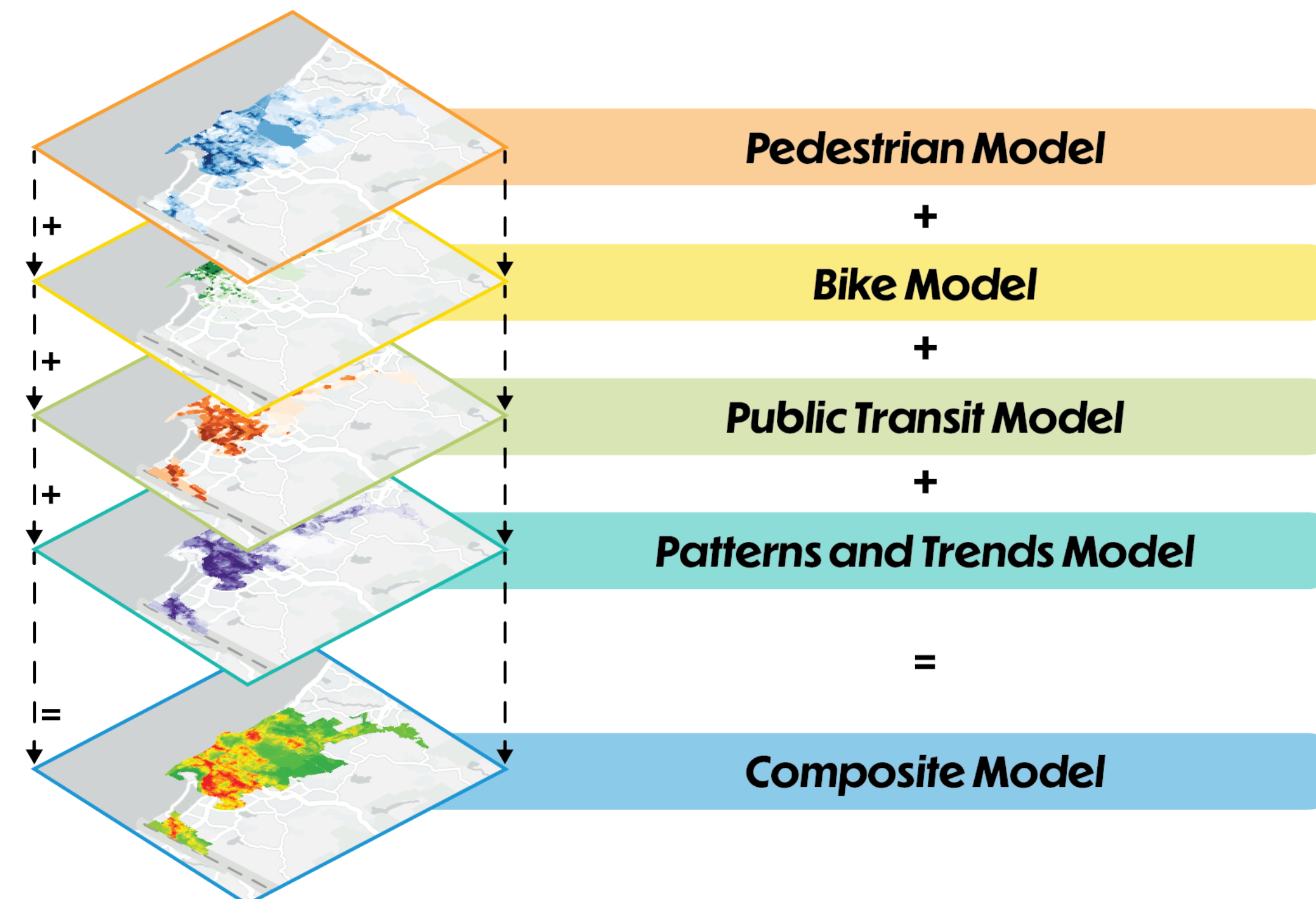


CPU PROPOSED PROJECTS



MULTIPLE DATASETS WERE COMBINED TO DEVELOP THE MOBILITY MASTER PLAN FOCUS AREAS:

- » PERCENTAGE OF WORKERS THAT COMMUTE BY MODE TYPE
- » ALL CRASHES BY MODE TYPE
- » PEDESTRIAN PROPENSITY ANALYSIS
- » BICYCLE PROPENSITY ANALYSIS
- » TRANSIT PRIORITY AREAS
- » NUMBER OF SEVERE AND FATAL COLLISIONS
- » CLIMATE EQUITY INDEX
- » BLUEPRINT DEVELOPMENT PROPENSITY MODEL
- » POPULATION DENSITY
- » POPULATION GROWTH
- » COMMUNITIES OF CONCERN
- » SANDAG SMART GROWTH AREAS
- » BLUEPRINT SAN DIEGO
- » HOUSEHOLDS WITH NO VEHICLE OWNERSHIP
- » PROXIMITY TO MAJOR POINTS OF INTEREST



The University Community Plan is being updated and for information visit: <https://www.planuniversity.org>

It is important to note that this plan update will add new mobility projects and recommendations.