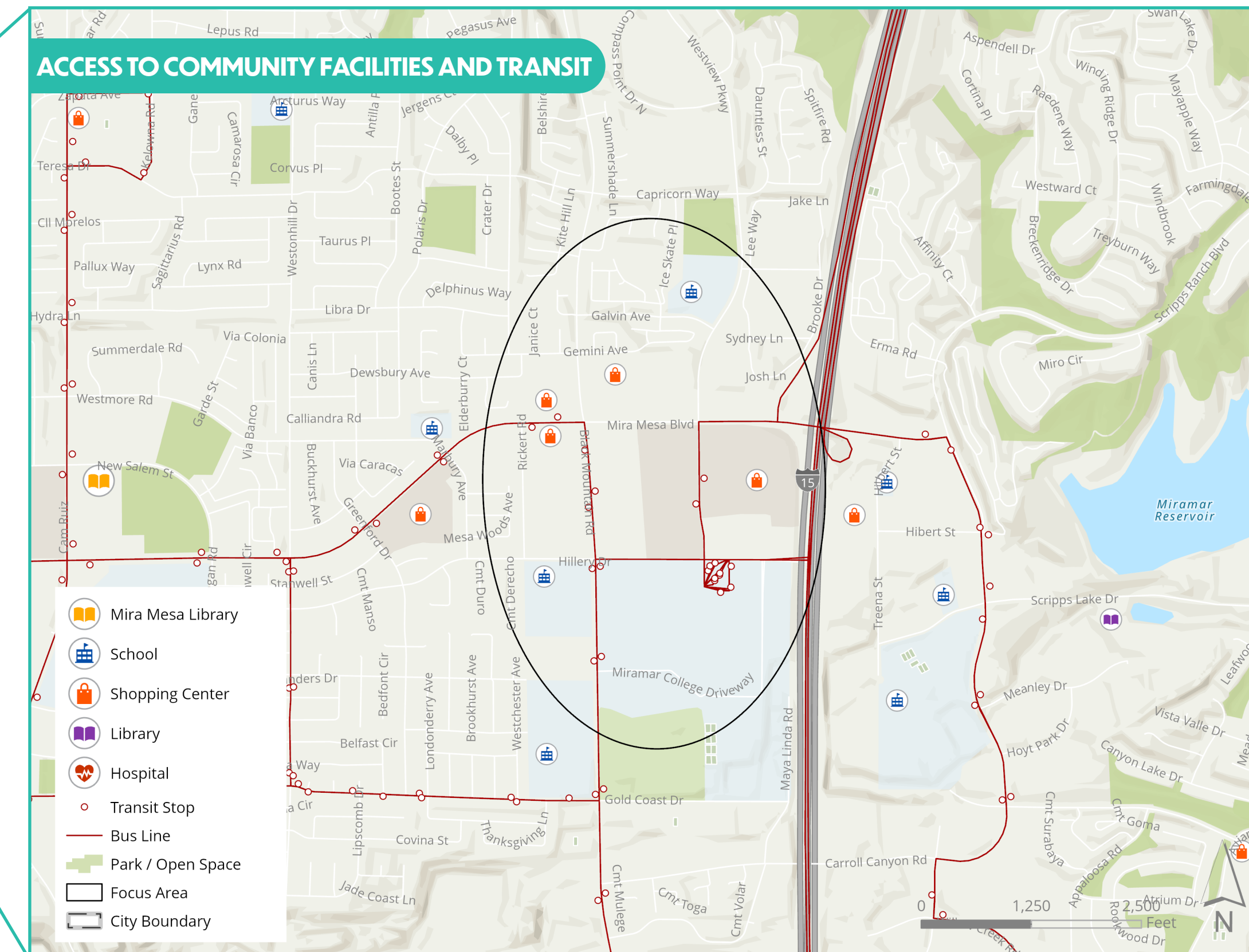
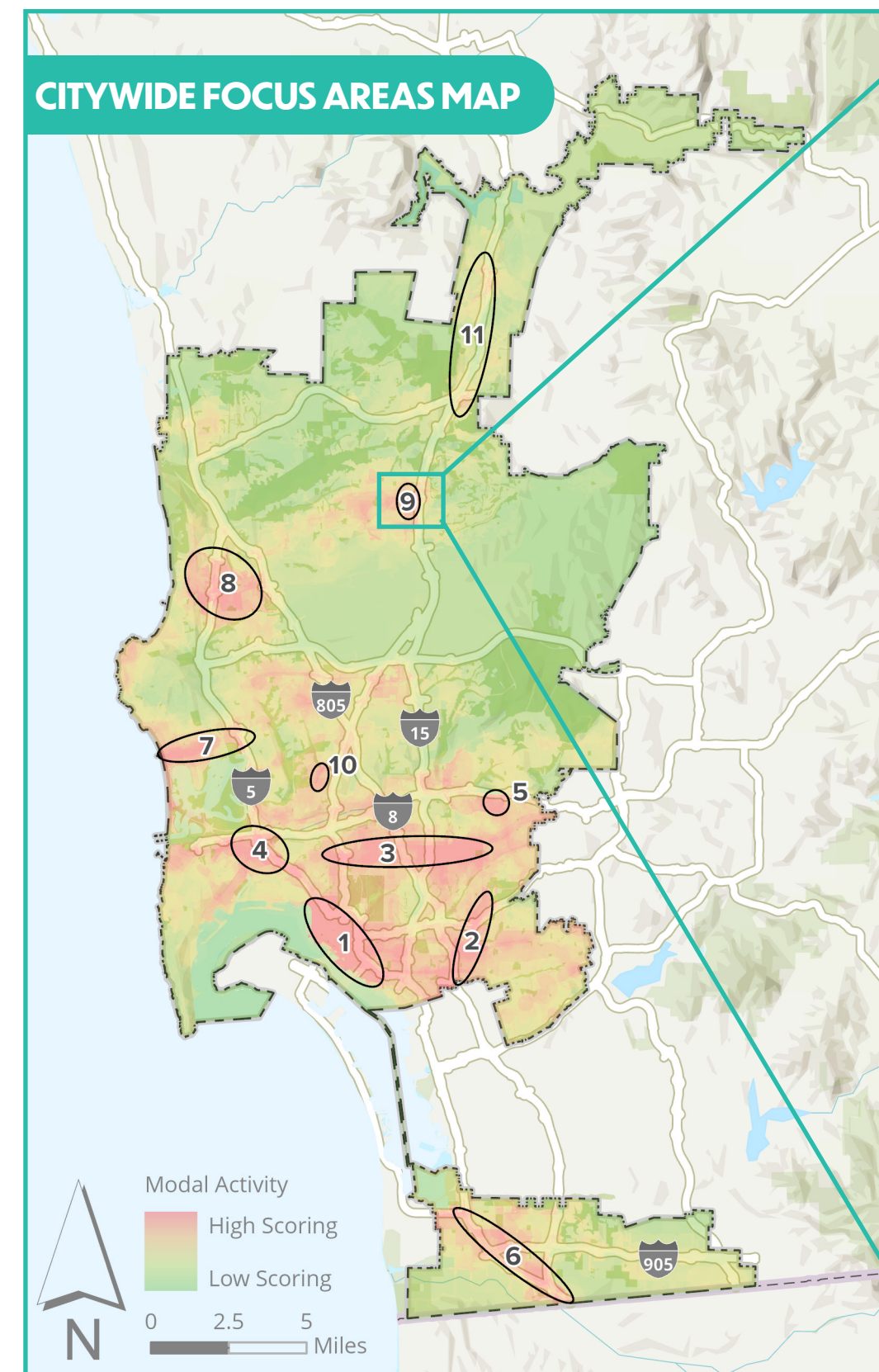


COMMUNITY SETTING

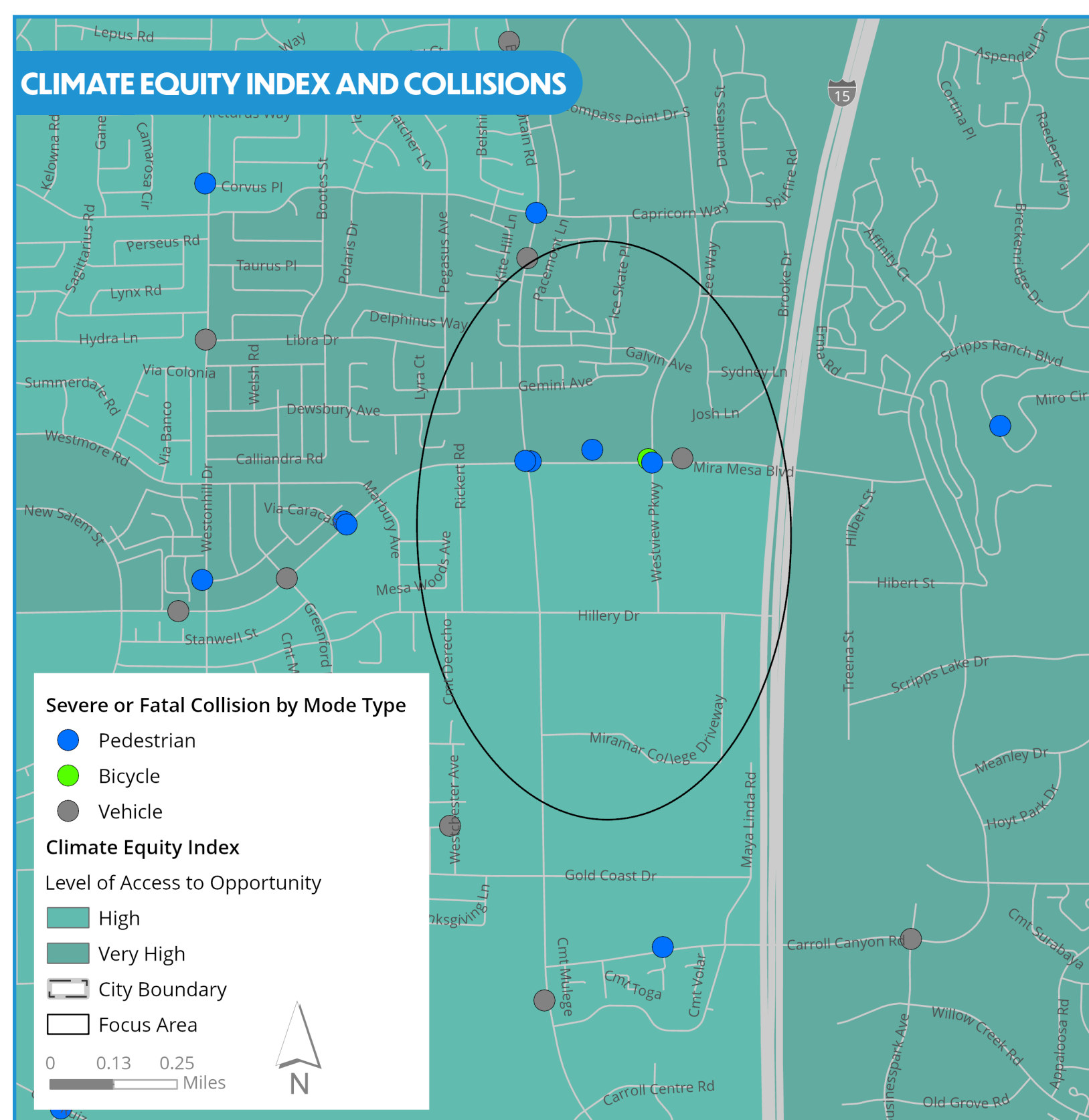
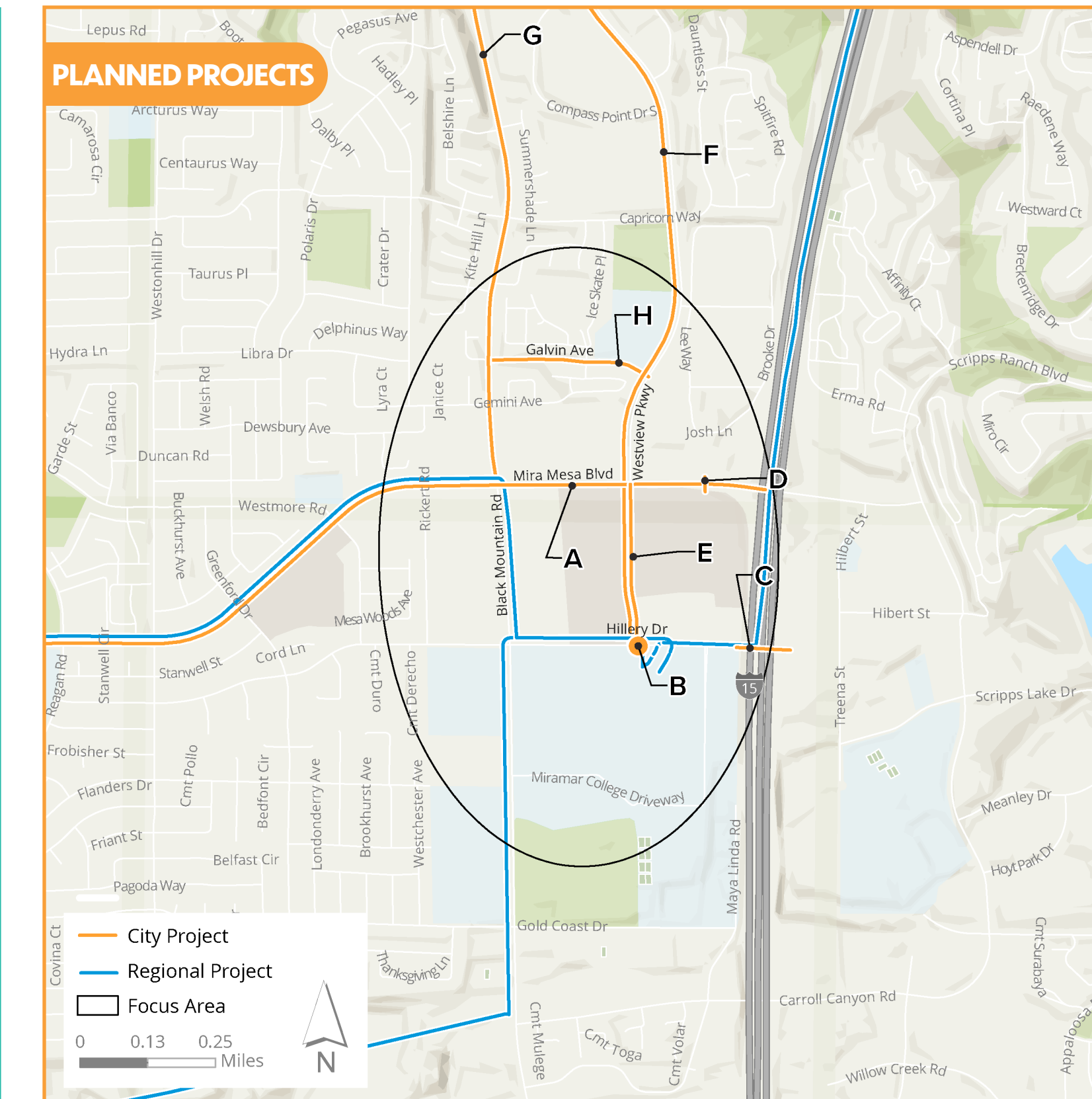
THE MOBILITY MASTER PLAN FOCUS AREA #9 INCLUDES PARTS OF MIRA MESA. THIS AREA CAPTURES A SEGMENT OF INTERSTATE-15. MOBILITY CHALLENGES AND OPPORTUNITIES INCLUDE PROVIDING SAFE AND EFFICIENT TRANSPORTATION OPTIONS TO AND FROM THE AREA'S LARGE COMMERCIAL AND EMPLOYMENT CENTERS AND SCHOOLS.

	POPULATION	FOCUS AREA: 4,000 CITY OF SAN DIEGO: 1,386,300
	MEDIAN HOUSEHOLD INCOME	FOCUS AREA: \$83,000 CITY OF SAN DIEGO: \$88,000
	MEDIAN AGE	FOCUS AREA: 37 CITY OF SAN DIEGO: 36
	PERCENTAGE OF WORKERS DRIVING ALONE	FOCUS AREA: 70% CITY OF SAN DIEGO: 69%
	PERCENTAGE OF HOUSEHOLDS WITH NO VEHICLE	FOCUS AREA: 6% CITY OF SAN DIEGO: 6%

FOCUS AREA ANALYSIS

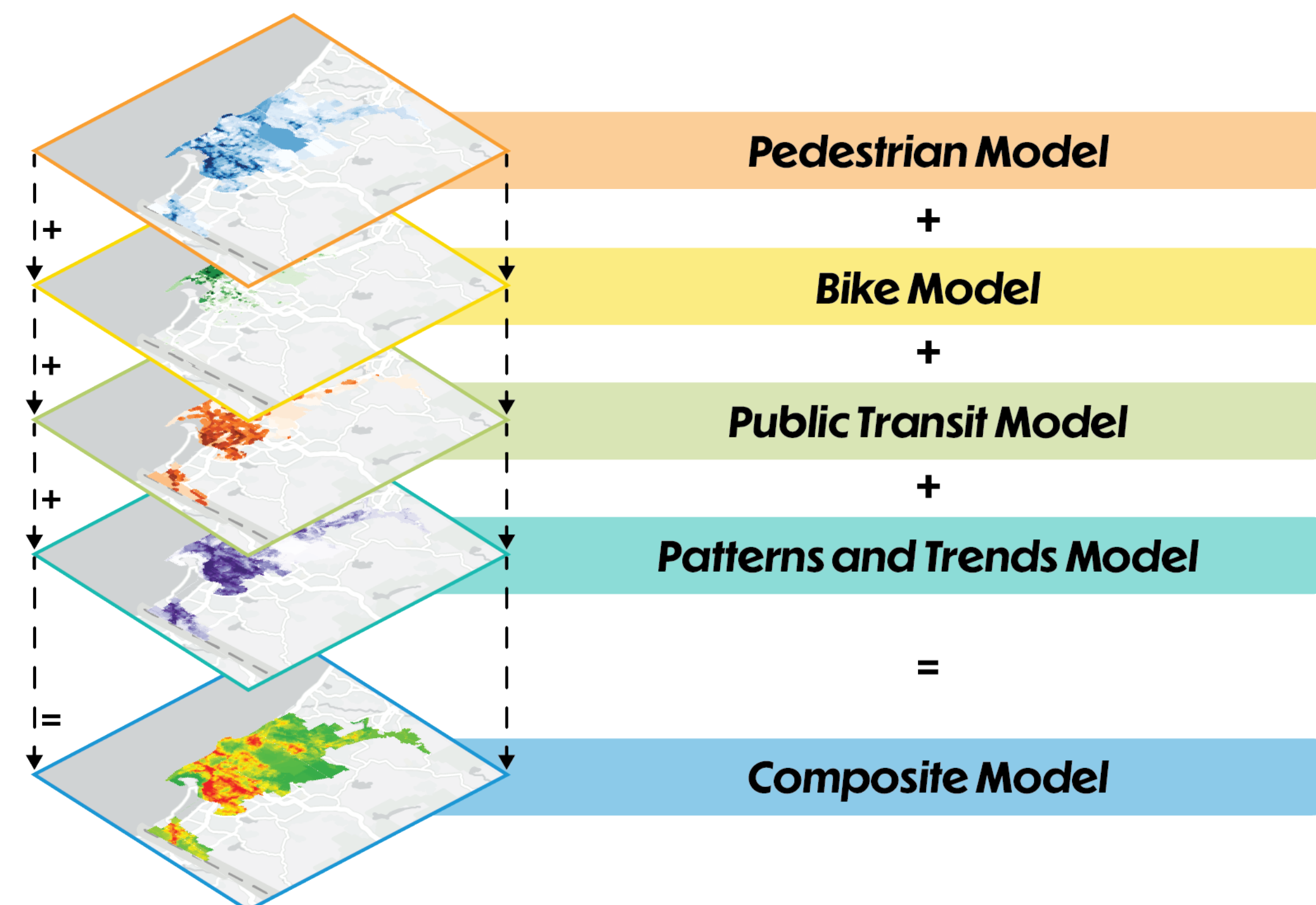


MOBILITY PROJECTS



MULTIPLE DATASETS WERE COMBINED TO DEVELOP THE MOBILITY MASTER PLAN FOCUS AREAS:

- » PERCENTAGE OF WORKERS THAT COMMUTE BY MODE TYPE
- » ALL CRASHES BY MODE TYPE
- » PEDESTRIAN PROPENSITY ANALYSIS
- » BICYCLE PROPENSITY ANALYSIS
- » TRANSIT PRIORITY AREAS
- » NUMBER OF SEVERE AND FATAL COLLISIONS
- » CLIMATE EQUITY INDEX
- » BLUEPRINT DEVELOPMENT PROPENSITY MODEL
- » POPULATION DENSITY
- » POPULATION GROWTH
- » COMMUNITIES OF CONCERN
- » SANDAG SMART GROWTH AREAS
- » BLUEPRINT SAN DIEGO
- » HOUSEHOLDS WITH NO VEHICLE OWNERSHIP
- » PROXIMITY TO MAJOR POINTS OF INTEREST



City Projects	Description
A	Flex lanes or queue jump lanes along Mira Mesa Blvd between I-5 Interchange and I-15 Interchange
B	Mobility hub at the Miramar College Transit Station
C	Pedestrian/bicycle bridge at I-15 near Hillery Drive DAR Bridge to connect the Mira Mesa and Scripps Miramar Ranch communities
D	Pedestrian/bicycle bridge directly east of the Mira Mesa Blvd and Westview Pkwy intersection
E	Flex lanes or queue jump lanes along Westview Parkway between Black Mountain Rd and Hillery Dr
F	Class IV cycle track along Westview Pkwy from Hillery Dr to Black Mountain Rd
G	Class IV cycle track along Black Mountain Rd from Mira Mesa Rd to Mercy Rd
H	Implement Class II bike facility along Galvin Av from Westview Pkwy to Black Mountain Rd