



Kelly Street Neighborhood Park General Development Plan Amendment Parks and Recreation Board Meeting

April 18, 2024

S P U R L O C K

The City of
SAN DIEGO 

Team Introduction

City of San Diego

Darren Genova
Ling Chan
Nathan Audo

Parks and Recreation

Ira Patton
Shamli Tarbell
Steve Palle
Charles Daniels

Spurlock Landscape Architects

Leigh Kyle
Ania Galka Armour
Tori Talbott
Jing Cao

Nasland Engineering

Kayla Shewchuk
Daniel Quinones
Valeria Contreras

Context



- Legend**
- Canyon
 - Parks
 - Schools
 - Trailhead
 - Trails
 - Creek



Site Overview

Neighborhood Parks



Legend

- Site (3.8ac)**
- Parks**
- Creek**

South Clairemont Community Park (2.98ac)

- Pool
- Recreation Center
- Playground
- Tennis Court
- Basketball Court
- Shaded Picnic Area

East Clairemont Athletic Area (9.13ac)

- Baseball Fields (4)
- Playground
- Comfort Station

Kearny Mesa Community Park (83.94ac)

- Pool
- Dog Park
- Baseball Fields (6)
- Basketball Courts (2)
- Playground
- Comfort Station
- BMX Track

Linda Vista Community Park (15.94ac)

- Skate Park
- Recreation Center
- Shaded Picnic Area
- Tennis Courts (4)
- Basketball Court
- Playground
- Soccer Field
- Comfort Station

Western Hills Neighborhood Park (12.82ac)

- Basketball Court
- Pickleball Court
- Picnic and BBQ Area
- Playground

Tecolote Park (19.38ac)

- Recreation Center
- Trailhead
- Basketball Court (2)
- Baseball Field (5)
- Playground
- Multipurpose Lawn

Edward Tyler Cramer Neighborhood Park (2.98ac)

- Picnic Area
- Totlot

Sefton Field (21.65ac)

- Little League Baseball (4)
- Baseball Field

Mission Heights Park (11.26ac)

- Playground
- Half Court Basketball

Old Trolley Barn Park (3.59ac)

- Playground
- Multipurpose Lawn

Civita Park (12.53ac)

- Amphitheater
- Splash Pad
- Picnic Area
- Community Garden
- Dog Park
- Interpretive Garden
- Bocce Court
- Comfort Station
- Playground (2)
- Half Court Basketball (2)

Murray Ridge Park (10.70ac)

- Picnic Seating
- Playground
- Basketball Court
- Tennis Court
- Adult Fitness

Cabrillo Heights Park (13.89ac)

- Baseball Fields (4)
- Picnic Area
- Playground
- Comfort Station

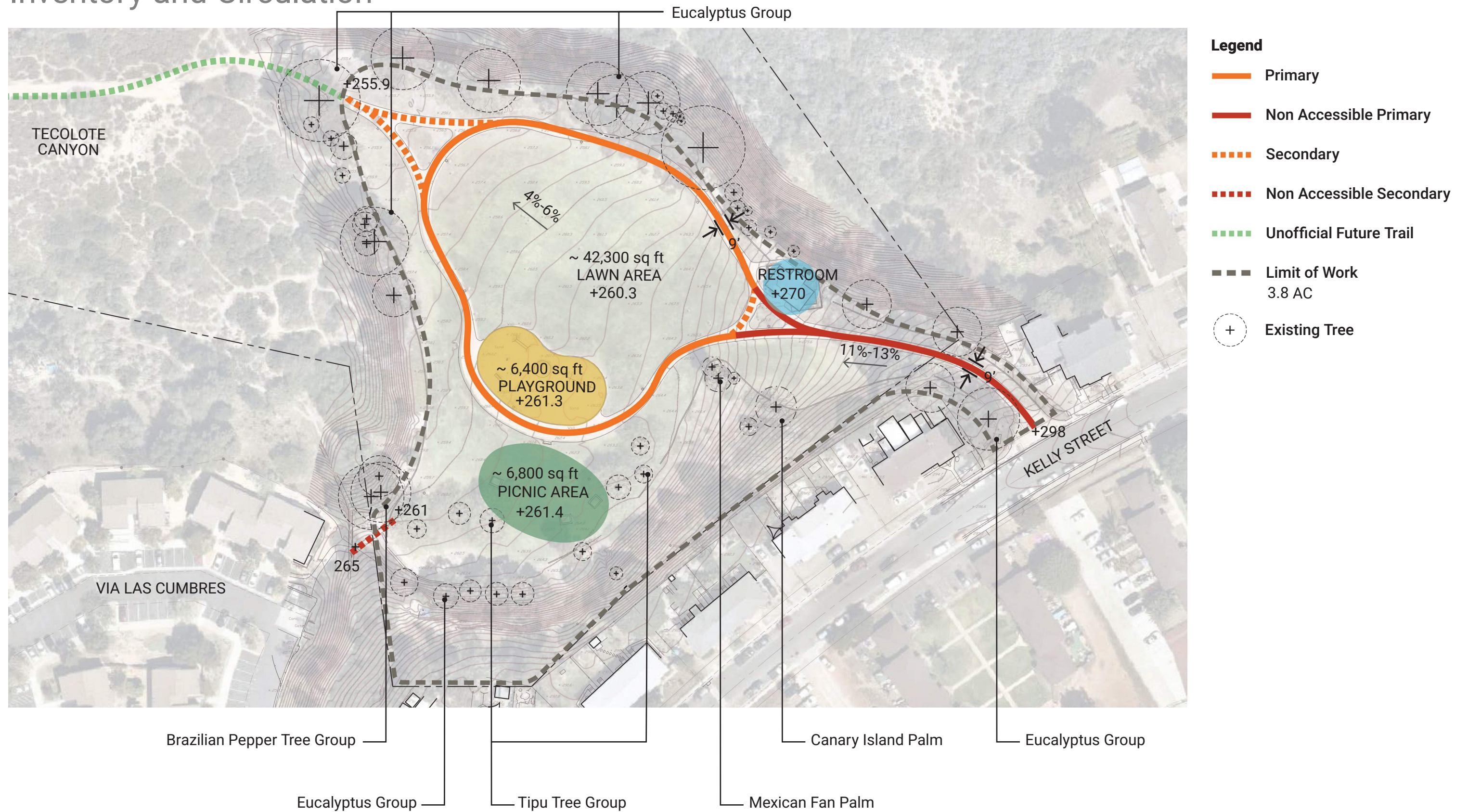
John Baca Park (1.39ac)

Montgomery Joint Use Facility (3.5ac)

- Multipurpose Lawn

Site Overview

Inventory and Circulation



Site Overview

Park Views



Locator Plan



1—View into the Park



2— Restroom



3— Picnic Area



4— Playground



5— West Connection



6— Trail into the Canyon

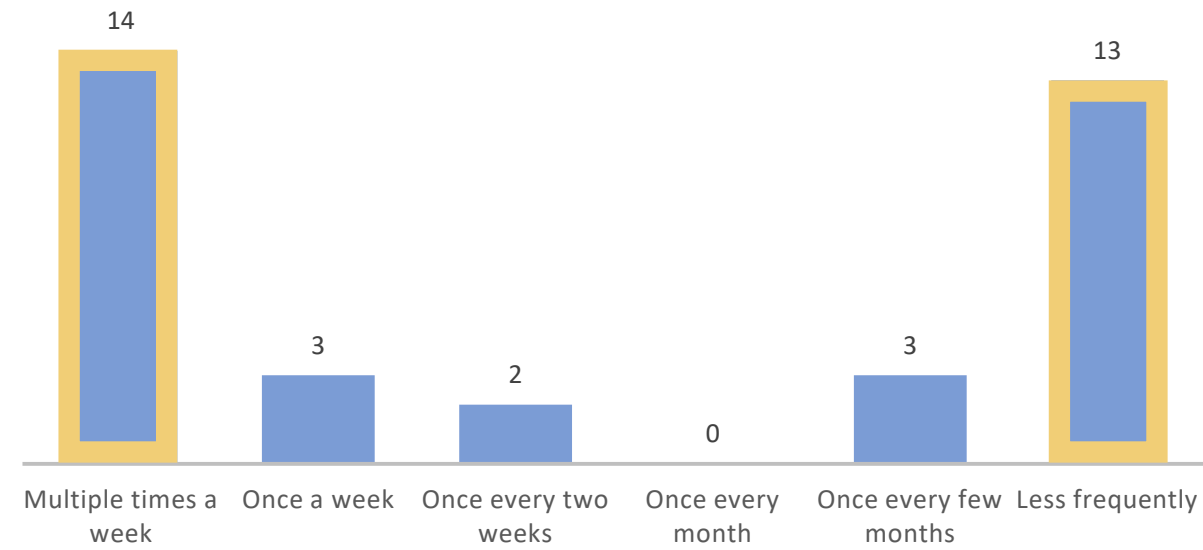
What We Heard

Workshop #1-#3 Programming Preferences

Community Participation

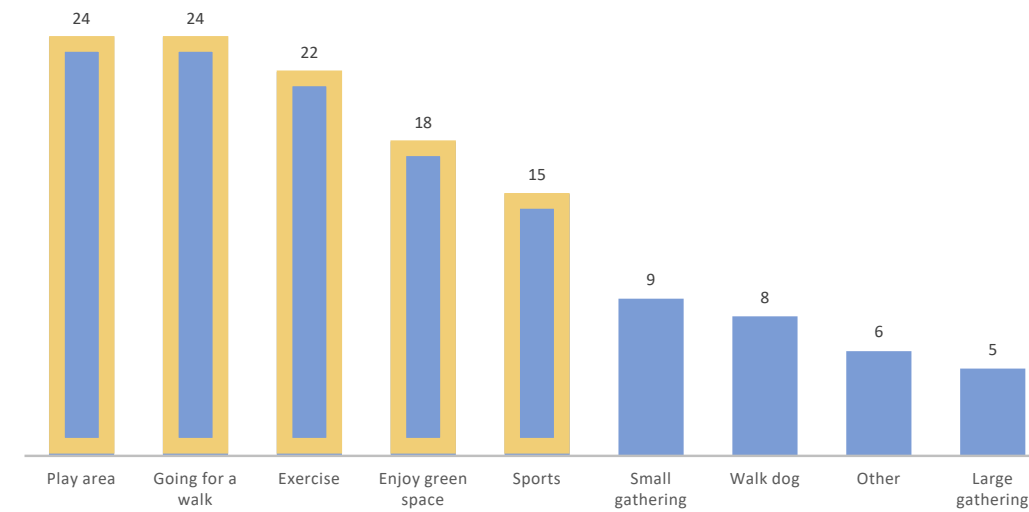
- How often do you use the park?

Polarization between frequently visit and rarely visit



- What is your main purpose for using the park? Top (5) choices

Play area, going for a walk, exercise, enjoying green space, and sports

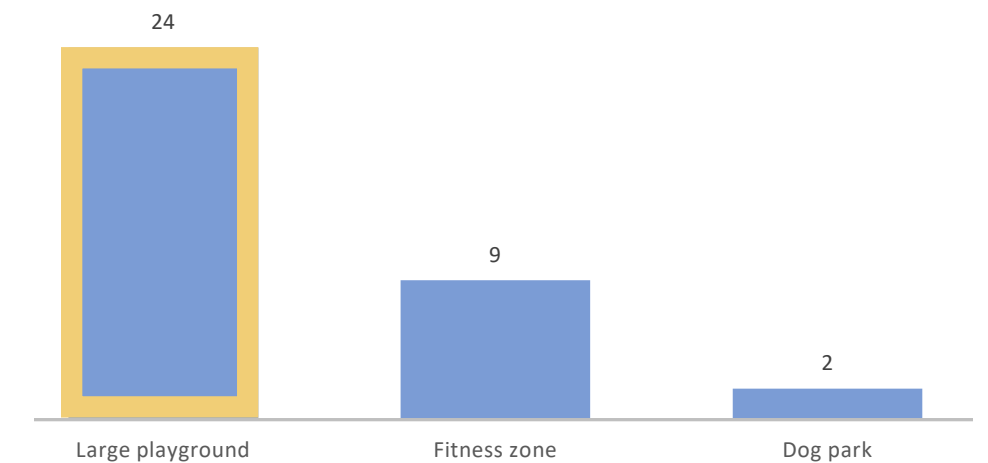
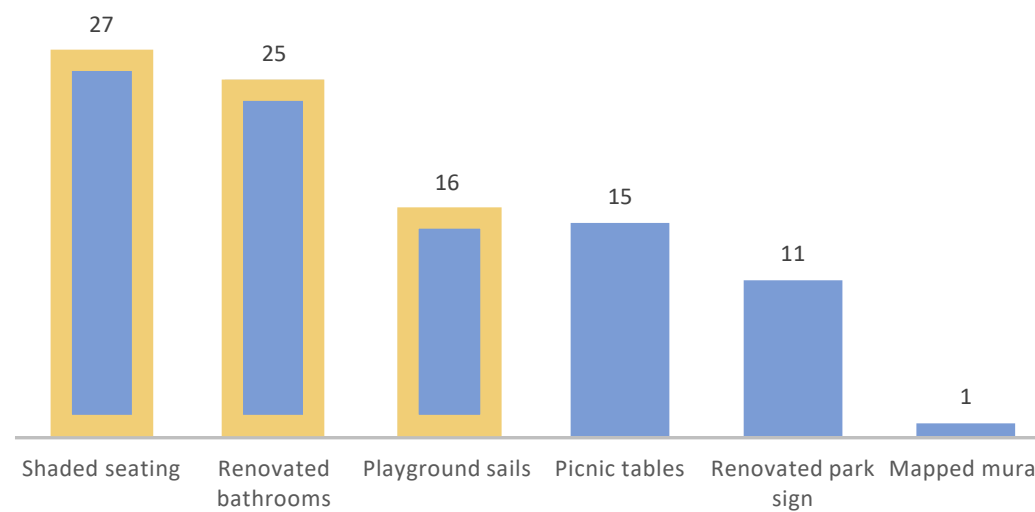
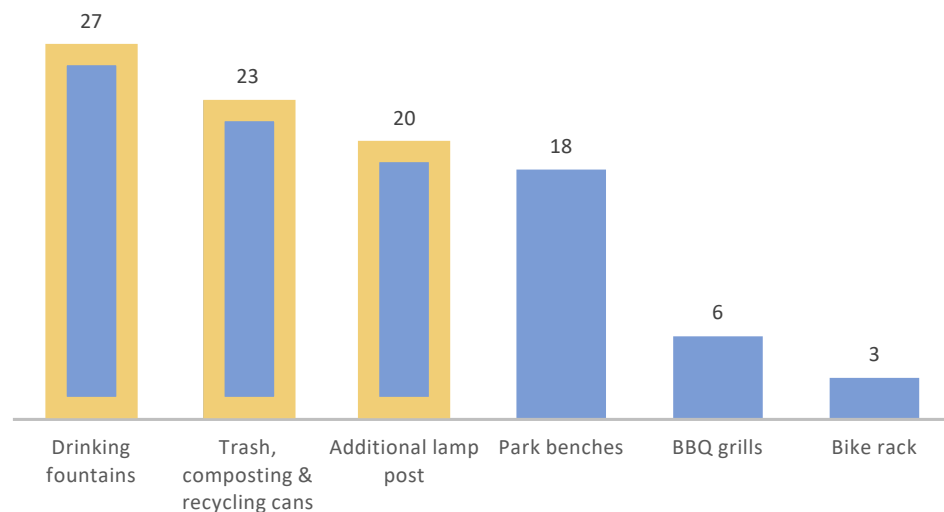


Program Preferences

- What **small** elements are most important to you in an improved park? Top (3) choices

- What **medium** elements are most important to you in an improved park? Top (3) choices

- What **large** elements are most important to you in an improved park? Top (3) choices



What We Heard

Workshop #1-#3 Programming Preferences

Comments Summary

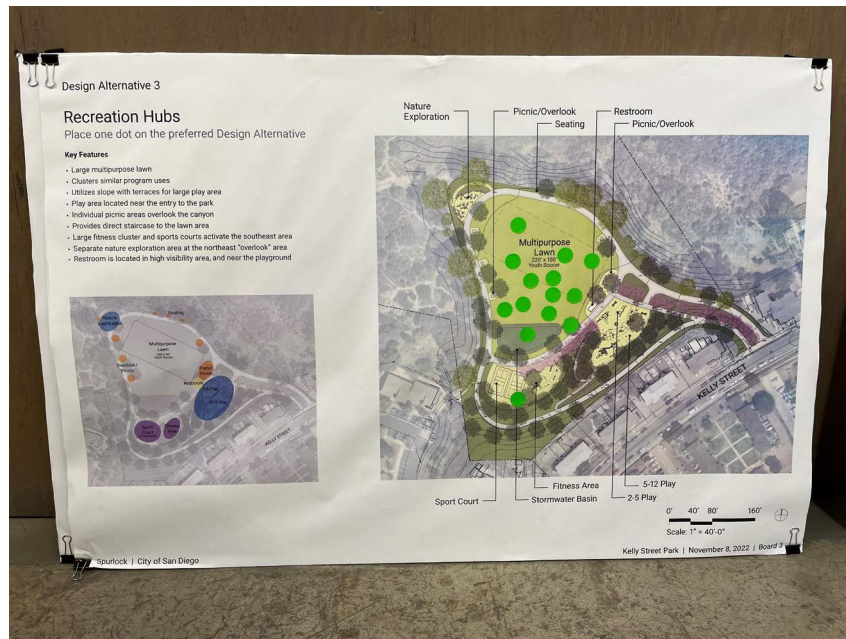
- New shaded playground
- Shaded seating area
- Renovated, secured bathroom
- New drinking fountain, trash receptacles
- Good security lighting
- Safety concerns
- Family oriented spaces
- More community events and support programs



What We Heard

Workshop #4 Recap - November 2022

3 Concept Alternatives / Preferred Concept Selection



'Recreation Hubs'

14



'Terraced Amenities'

0



'Canyon Trail'

0

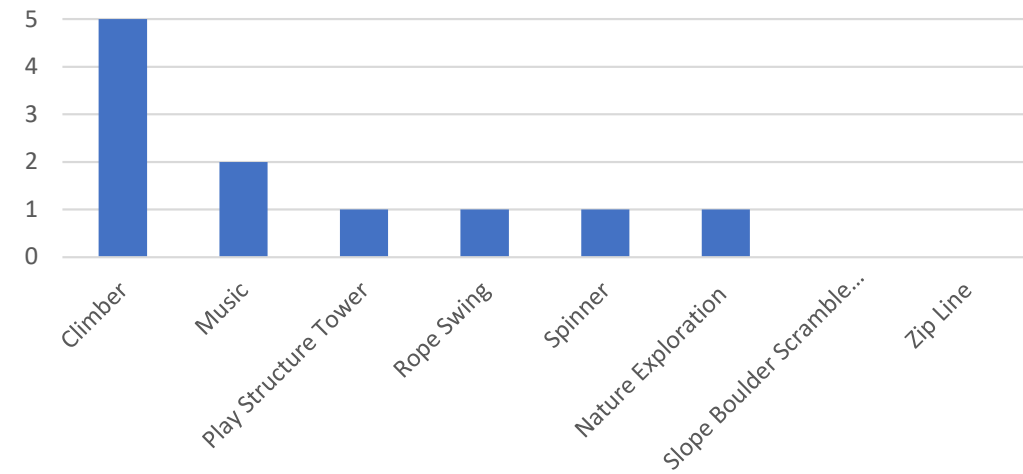
What We Heard

Workshop #4 Recap - November 2022

Preference Poll Results

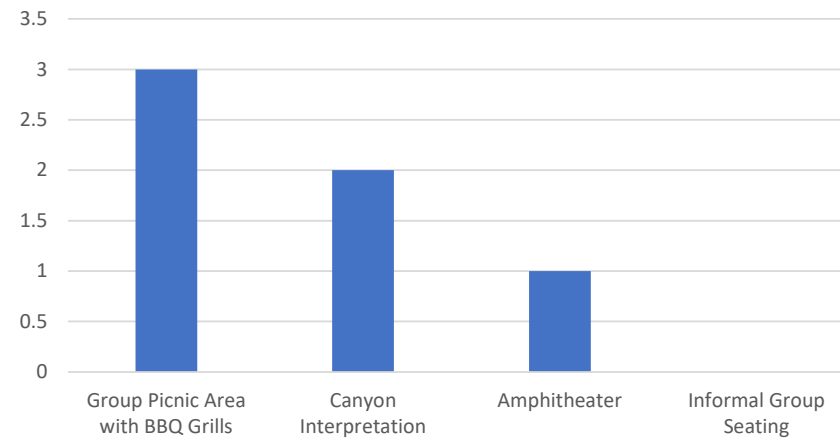
- Most Preferred Play Equipment

Climber



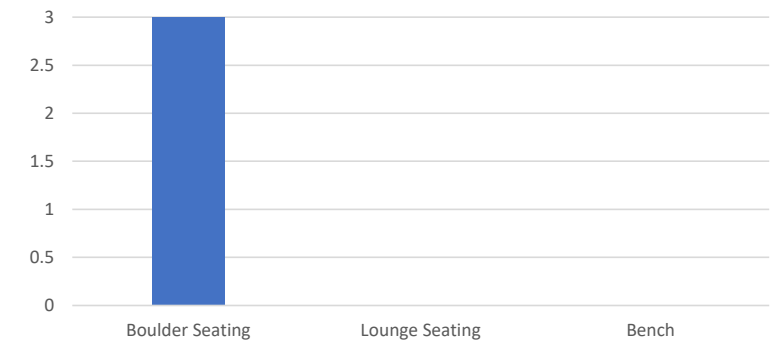
- Most Preferred Gathering Places

Group Picnic Area, Canyon Interpretation



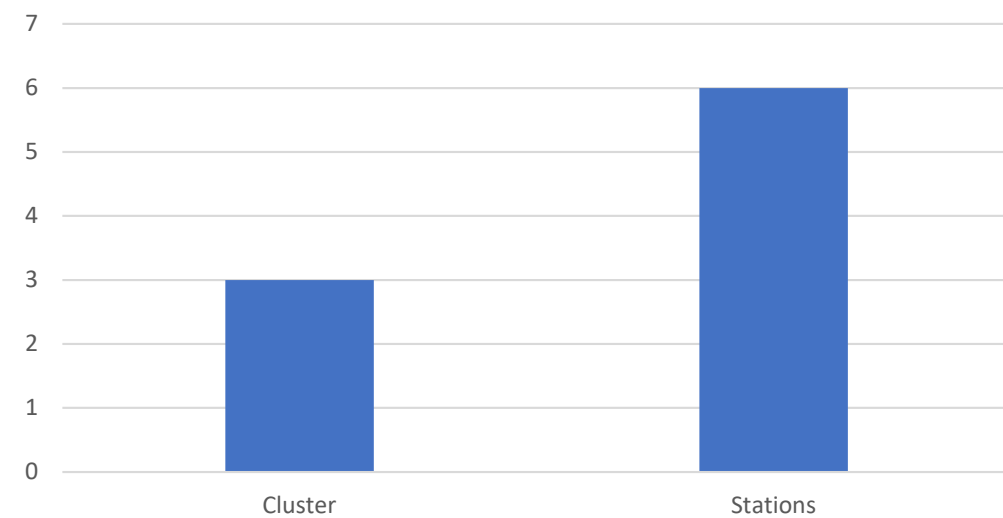
- Most Preferred Special Seatings

Boulder Seating



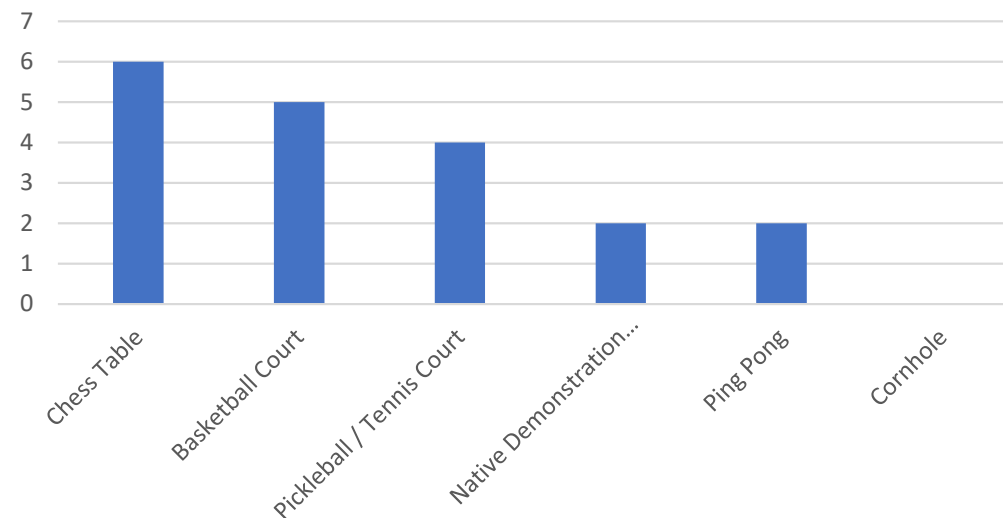
- Most Preferred Fitness

Individual Equipment Stations



- Most Preferred Recreational Amenity

Game Tables, Sport Courts



- Most Preferred Park Character

Modern Character - 4

Traditional Character - 3

What We Heard

Workshop #5 Community Recreation Group Action Item

Preferred GDP Amendment Approved

Park and Rec Comments

- Playground updated to be more inclusive
- Separated Swing Area
- Improved Access to Playground



Final General Development Plan



NOTES:
 MSCP LAND USE ADJACENCY GUIDELINES MINIMIZE DIRECT AND INDIRECT IMPACTS AND MAINTAIN THE FUNCTION OF THE MHPA. THE PROJECT IS LOCATED ADJACENT TO THE MHPA. THEREFORE, THE FOLLOWING LAND USE ADJACENCY GUIDELINES APPLY.

- DRAINAGE** – ALL NEW AND PROPOSED DEVELOPED AREAS IN AND ADJACENT TO THE PRESERVE MUST NOT DRAIN DIRECTLY INTO THE MHPA. ALL DEVELOPED AND PAVED AREAS MUST PREVENT THE RELEASE OF TOXINS, CHEMICALS, PETROLEUM PRODUCTS, EXOTIC PLANT MATERIALS, AND OTHER ELEMENTS THAT MIGHT DEGRADE OR HARM THE NATURAL ENVIRONMENT OR ECOSYSTEM PROCESSES WITHIN THE MHPA.
- TOXICS** – LAND USES, SUCH AS RECREATION AND URBAN LANDSCAPING THAT USE CHEMICALS OR GENERATE BY-PRODUCTS, SUCH AS PESTICIDES, HERBICIDES, ANIMAL WASTE, OILS, FUELS, AND OTHER SUBSTANCES, THAT ARE POTENTIALLY TOXIC OR IMPACTIVE TO WILDLIFE, SENSITIVE SPECIES, HABITAT, OR WATER QUALITY NEED TO INCORPORATE MEASURES TO REDUCE IMPACTS CAUSED BY APPLICATION OR DRAINAGE OF SUCH MATERIALS INTO THE MHPA.
- LIGHTING** – LIGHTING OF ALL DEVELOPED AREAS WITHIN AND ADJACENT TO THE MHPA SHALL BE DIRECTED AWAY FROM THE MHPA. WHERE NECESSARY, DEVELOPMENT SHOULD PROVIDE ADEQUATE SHIELDING WITH NON-INVASIVE PLANT MATERIALS (PREFERABLY NATIVE), BERMING, AND/OR OTHER METHODS TO PROTECT THE MHPA AND SENSITIVE SPECIES FROM NIGHT LIGHTING.
- CONSTRUCTION NOISE** – USES IN OR ADJACENT TO THE MHPA SHOULD BE DESIGNED TO MINIMIZE NOISE IMPACTS. BERMS OR WALLS SHOULD BE CONSTRUCTED ADJACENT TO RECREATIONAL AREAS, AND OTHER USES THAT MAY INTRODUCE NOISES THAT COULD IMPACT OR INTERFERE WITH WILDLIFE UTILIZATION OF THE MHPA. EXCESSIVELY NOISY USES OR ACTIVITIES ADJACENT TO BREEDING AREAS MUST INCORPORATE NOISE REDUCTION MEASURES AND BE CURTAILED DURING THE BREEDING SEASON OF SENSITIVE SPECIES. ADEQUATE NOISE REDUCTION MEASURES SHOULD ALSO BE INCORPORATED FOR THE REMAINDER OF THE YEAR.
- BARRIERS/UNAUTHORIZED ACCESS** – NEW DEVELOPMENT ADJACENT TO THE MHPA MAY BE REQUIRED TO PROVIDE BARRIERS (E.G., NON-INVASIVE VEGETATION, ROCKS/BOULDERS, FENCES, WALLS, AND/OR SIGNAGE) ALONG THE MHPA BOUNDARIES TO DIRECT PUBLIC ACCESS TO APPROPRIATE LOCATIONS AND REDUCE DOMESTIC ANIMAL PREDATION. ACCESS TO THE MHPA, IF ANY, SHOULD BE DIRECTED TO MINIMIZE IMPACTS AND REDUCE IMPACTS ASSOCIATED WITH DOMESTIC PET PREDATION.
- INVASIVE SPECIES** – NO INVASIVE, NON-NATIVE PLANT SPECIES SHALL BE INTRODUCED INTO AREAS ADJACENT TO THE MHPA.
- BRUSH MANAGEMENT** – NEW DEVELOPMENT LOCATED ADJACENT TO THE MHPA MUST BE SET BACK TO INCORPORATE ZONE 1 BRUSH MANAGEMENT AREAS ON THE DEVELOPMENT PAD AND OUTSIDE OF THE MHPA. ZONE 2 MAY BE LOCATED IN THE MHPA EXCEPT WHERE NARROW WILDLIFE CORRIDORS REQUIRE IT TO BE LOCATED OUTSIDE THE MHPA. VEGETATION CLEARING SHALL BE DONE CONSISTENT WITH CITY STANDARDS AND SHALL AVOID/MINIMIZE IMPACTS TO COVERED SPECIES TO THE MAXIMUM EXTENT POSSIBLE.
- GRADING/LAND DEVELOPMENT** – MANUFACTURED SLOPES ASSOCIATED WITH SITE DEVELOPMENT SHALL BE INCLUDED WITH THE DEVELOPMENT FOOTPRINT FOR PROJECTS WITHIN OR ADJACENT TO THE MHPA.

SYMBOL	FOR REFERENCE
A	CURB RAMP; COLOR PER PAVING TYPE
B	BIOFILTRATION BASIN WITH COBBLE AND BOULDERS
C	BLUE CURB ON STREET PARKING SPACE

SYMBOL	EXISTING TO REMAIN
D	EXISTING TREE TO REMAIN
E	EXISTING PAVING TO REMAIN

SYMBOL	PLAN GRAPHICS
---	LIMIT OF WORK
---	PROPERTY LINE
---	MULTI-HABITAT PLANNING AREA
PA	PLANTING AREA
*	DIRECTIONAL SIGN



IMPROVEMENTS LEGEND

SYMBOL	PAVING
[Light Gray]	CONCRETE PAVING TYPE 1 – NATURAL GRAY WITH SAND FINISH
[Medium Gray]	CONCRETE PAVING TYPE 2 – INTERGRAL COLOR WITH TOP CAST FINISH
[Dark Gray]	CONCRETE PAVING AT SIDEWALK – NATURAL GRAY WITH BROOM FINISH
[Light Green]	GRANITECTRE PAVING
[Brown]	COLORLED SPORTS SURFACING OVER CONCRETE BASE
[Yellow]	POURED-IN-PLACE RUBBER SURFACING OVER POROUS CONCRETE
[Dark Green]	DECORATIVE COBBLE ROCK MULCH
[Light Blue]	TRUNCATED DOME PAVERS
o o	BOULDERS 3', 4', 5' DIAMETER

SYMBOL	SITE PROGRAMMING
1	ACCESSIBLE, PREFABRICATED RESTROOM BUILDING
2	12' WIDE PEDESTRIAN/MAINTENANCE PATH
3	9' WIDE PEDESTRIAN/MAINTENANCE PATH
4	6' WIDE PEDESTRIAN PATH
5	2-5YR PLAY AREAS
6	5-12YR PLAY AREAS
7	EMBANKMENT SLIDE AND SLOPE CLIMBERS
8	SHADE SAIL STRUCTURE
9	MULTIPURPOSE LAWN AREA
10	BASKETBALL COURT WITH FUTSOL GOALS
11	FITNESS AREA
12	PICNIC AREA
13	OVERLOOK WITH SWINGS
14	GRAVEL SWALE

SYMBOL	EDGING / CURBS / WALLS
15	MOW CURB
16	18" HIGH LANDSCAPE CONCRETE WALL
17	RETAINING WALL
18	PARK MONUMENT SIGN
19	CURBWALL

SYMBOL	STAIRS / RAMPS / RAILINGS / FENCES
20	CONCRETE ACCESSIBLE RAMP WITH HANDRAILS
21	CONCRETE STAIRS WITH HANDRAILS
22A	10' HIGH CHAINLINK FENCE
22B	6' HIGH CHAINLINK FENCE
22C	42" HIGH SPLIT RAIL FENCE
23	CHAINLINK SWING GATE
24	ARM GATE WITH PEDESTRIAN BYPASS

SYMBOL	LIGHTING
25A	LIGHT POLE TYPE 1 – WITH STANDARD POLE
25B	LIGHT POLE TYPE 2 – WITH HINGED POLE
26	MONUMENT SIGN UPLIGHT

SYMBOL	SITE FURNISHINGS
27	PICNIC TABLE
28	ACCESSIBLE PICNIC TABLE
29	FREE STANDING BENCH WITH BACK
30	COMPANION SEATING
31	BOULDER BENCH WITH BACK
32	WALL MOUNTED SEAT WITH BACK
33	BIKE RACK
34	HOT COAL BIN
35	LITTER/RECYCLING RECEPTACLE
36	INTERPRETATIVE SIGNAGE
37	FREESTANDING DRINKING FOUNTAIN

PLANTING LEGEND

SYMBOL	CANOPY TREE, SUCH AS:
[Green Circle]	TIPUANA TIPU ULMAS PARVIFOLIA

SYMBOL	SLOPE TREE, SUCH AS:
[Green Circle]	PINUS HALEPENSIS PODOCARPUS GRAECIOR

SYMBOL	SPECIMEN TREE, SUCH AS:
[Green Circle]	QUERCUS AGRIFOLIA QUERCUS ENGLEMANII QUERCUS SUBER

SYMBOL	ACCENT TREE, SUCH AS:
[Green Circle]	ACACIA PODALYRIIFOLIA ARBUTUS 'MARINA' CASSIA LEPTOPHYLLA LAGERSTROEMIA INDICA METROSIDEROS EXCELSIA

SYMBOL	NATIVE TREE, SUCH AS:
[Green Circle]	ALNUS RHOMBIFOLIA HETEROMELES ARBUTIFOLIA

SYMBOL	NATIVE UNDERSTORY, SUCH AS:
[Green Square]	ARTEMESIA CALIFORNICA BACCHARIS PILLULARIS 'PIGEON POINT' ENCELIA FARINOSA ERIOGONUM SPP. MUHLENBERGIA RIGENS RIBES SPECIOSUM SALVIA SPP.

SYMBOL	PARK UNDERSTORY, SUCH AS:
[Green Square]	BACCHARIS PILLULARIS 'PIGEON POINT' LEYMUS CONDENSATUS 'CANYON PRINCE' LOMANDRA LONGIFOLIA 'BREEZE' LONICERA SUBSPICATA PITTIOSPORUM SPP. WESTRINGIA SPP.

SYMBOL	ORNAMENTAL UNDERSTORY, SUCH AS:
[Green Square]	AGAVE ATTENUATA ALOE SPP. ARTEMESIA CALIFORNICA 'CANYON GRAY' LANTANA SPP. CISTUS SP.

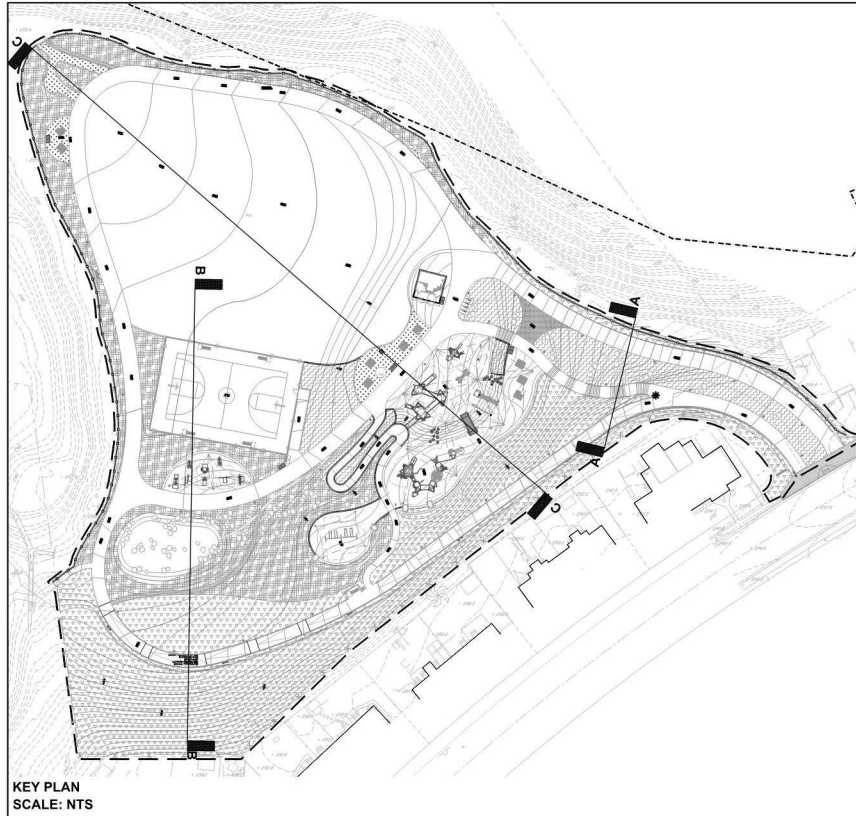
SYMBOL	BIOFILTRATION BASIN, 85% MIXED-SIZED COBBLE MULCH 15% PLANTING, SUCH AS:
[Green Square]	BACCHARIS PILLULARIS 'PIGEON POINT' CAREX SPISSA FESTUCA CALIFORNICA JUNCUS PATENS LEYMUS CONDENSATUS 'CANYON PRINCE' MUHLENBERGIA RIGENS

SYMBOL	TURF, SUCH AS:
[Green Square]	TURF SOD MIX SUCH AS: BANDERA BERMUDA SOD

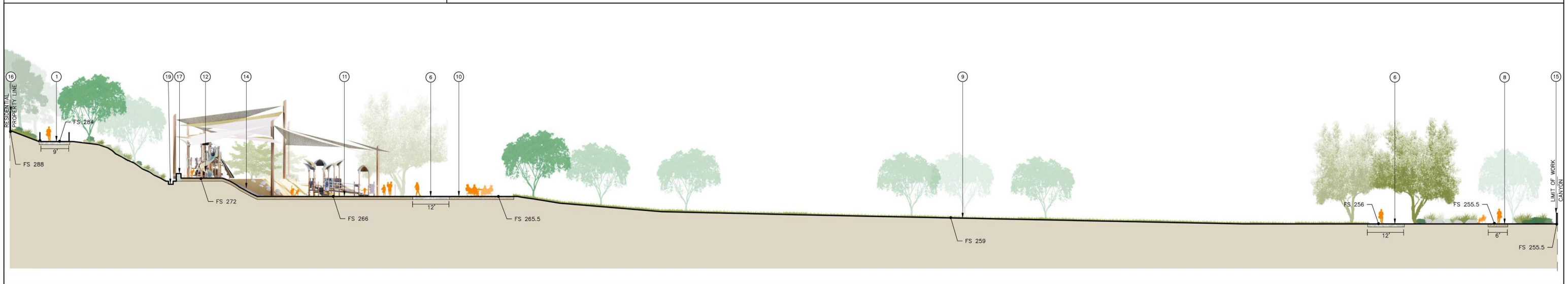
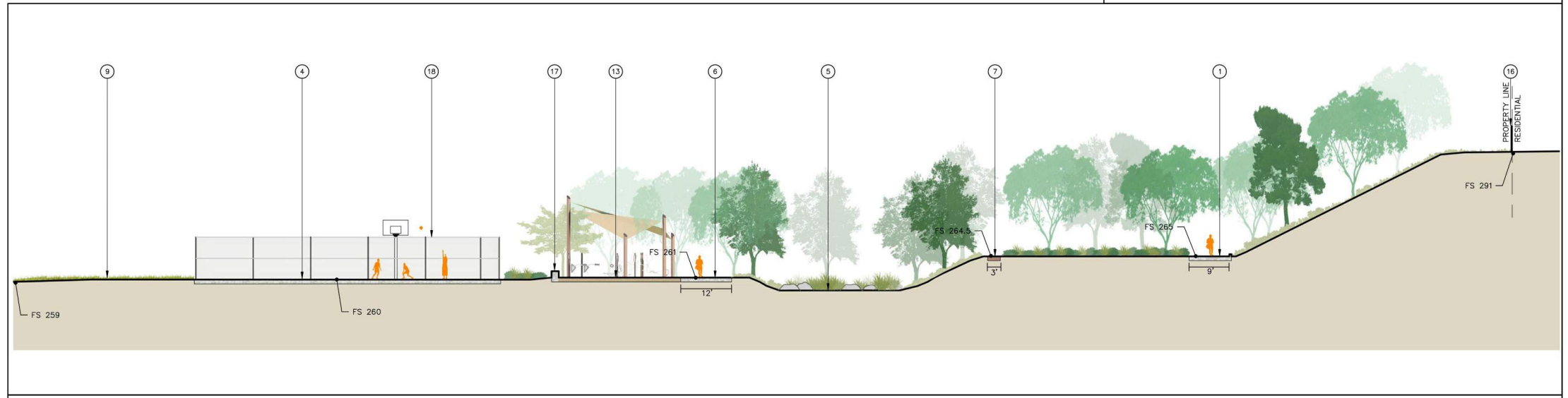
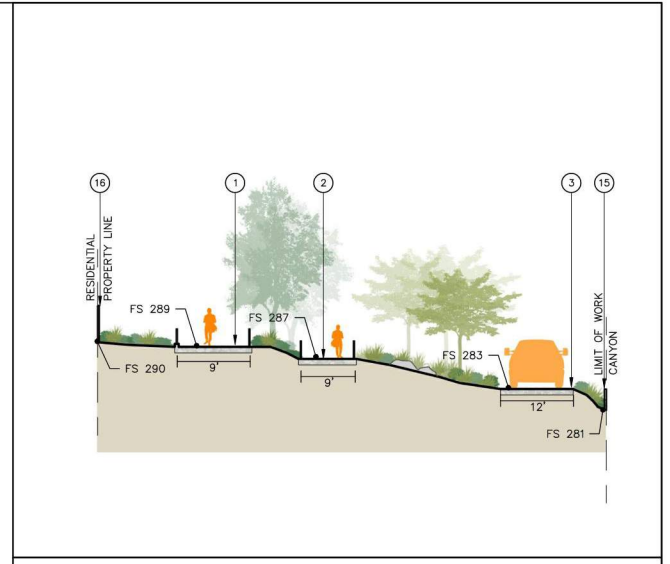
SYMBOL	GRASSCRETE, SUCH AS:
[Green Square]	PLANTED & DRIVABLE PAVING SUCH AS: GRASSPAVE 2

SYMBOL	BARK MULCH
[Brown Square]	BARK MULCH

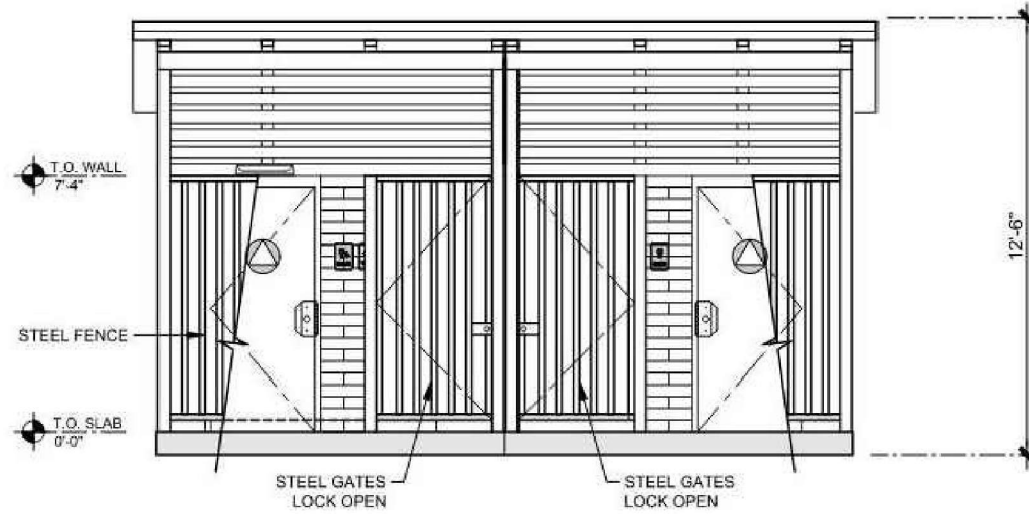
Sections



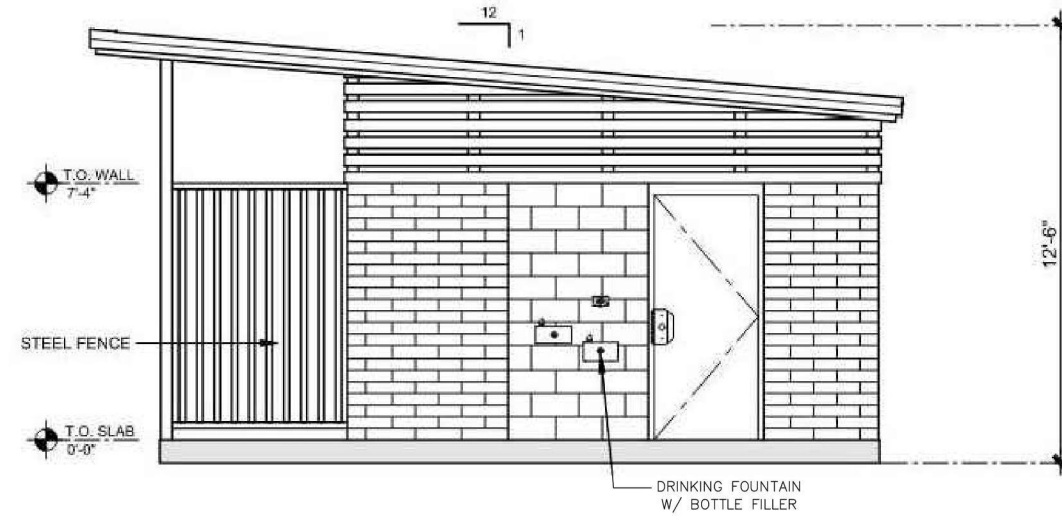
- ① ACCESSIBLE CONCRETE RAMP
- ② STAIR ACCESS
- ③ CONCRETE MAINTENANCE ACCESS
- ④ SPORTS COURT
- ⑤ BIOBASIN
- ⑥ CONCRETE PATH
- ⑦ MAINTENANCE PATH
- ⑧ GRANITECRETE PATH
- ⑨ MULTIPURPOSE LAWN AREA
- ⑩ PICNIC AREA
- ⑪ 2-5 PLAYGROUND
- ⑫ 5-12 PLAYGROUND
- ⑬ FITNESS AREA
- ⑭ SLOPE PLAY
- ⑮ 42" HIGH SPLIT RAIL FENCE
- ⑯ 6' HIGH CHAINLINK FENCE
- ⑰ 18" HIGH LANDSCAPE CONCRETE WALL
- ⑱ 10' HIGH CHAINLINK FENCE AND GATE
- ⑲ CONCRETE DITCH



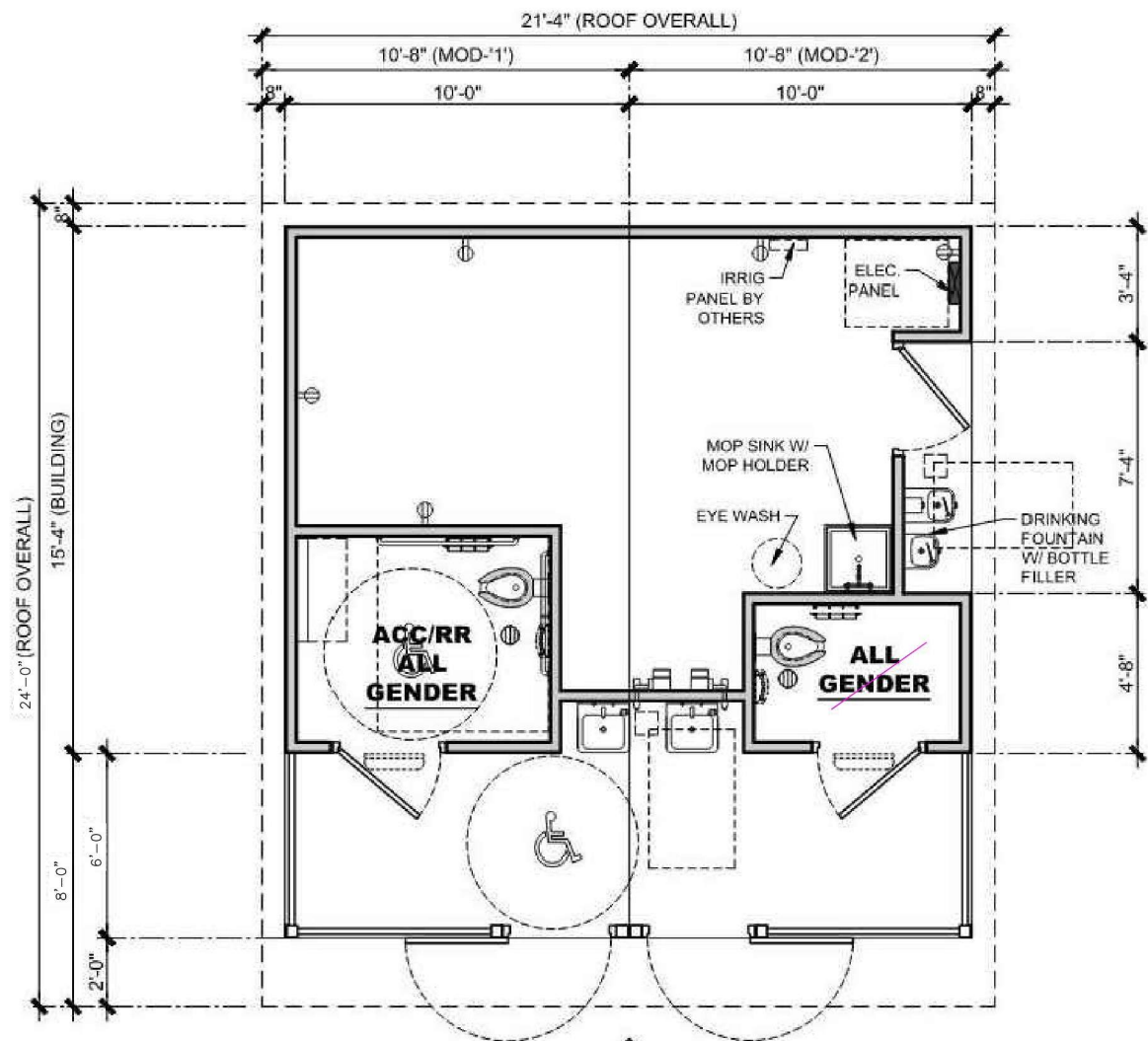
Restroom Details



ELEVATION 1



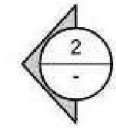
ELEVATION 2



FLOOR PLAN



WARM GREY SHOTBLAST



COLOR STUDY



PARK KELLY SAN DIEGO, CALIFORNIA
RESTROOM STORAGE BUILDING

PUBLIC RESTROOM COMPANY
Building Better Places To Go™

www.PublicRestroomCompany.com
2587 BUSINESS PARKWAY
HUNTSVILLE, ALABAMA 35894
P: 858-888-2540 T: 858-888-1448

THIS DRAWING IS THE PROPERTY OF PUBLIC RESTROOM COMPANY AND SHALL BE KEPT CONFIDENTIAL. NO PART OF THIS DRAWING IS TO BE REPRODUCED OR TRANSMITTED IN ANY FORM OR BY ANY MEANS, ELECTRONIC OR MECHANICAL, INCLUDING PHOTOCOPYING, RECORDING, OR BY ANY INFORMATION STORAGE AND RETRIEVAL SYSTEM, WITHOUT THE WRITTEN PERMISSION OF PUBLIC RESTROOM COMPANY.

Kelly Street Neighborhood Park GDP Amendment

Hardscape Materials

PAVING



Standard Paving



GraniteCrete



Rubber Surfacing



Sports Surfacing

SITE PROGRAMMING



Restroom



Multipurpose Lawn Area



Basketball Court with Futsal Goals



Interpretive Signage

PLAY FEATURES



2-5 YR Play Area



5-12 YR Play Area



Curva Spinner



We-Saw



Embankment Slide and Climbers



Rope Pull Climbers



Mobius Climber



Saddle Spinner



Double Bobble Spring Rider



Swings

FITNESS



Chest / Back Press



Elliptical



Assisted Row / Push-Up



Squat Press



Plyometrics



Pull-Up / Dip



Balance Steps



Hand Cycler

NOTE:
CONCEPTUAL FITNESS EQUIPMENT
SELECTION. FINAL DESIGN TO PROVIDE AN
ACCESSIBLE EQUIPMENT EQUIVALENT FOR
EACH TYPE OF EXERCISE MACHINE.

SITE FEATURES



Landscape Wall



Monument Sign



Arm Gate



Site Lighting



Monument Sign Lighting

FURNISHING



Picnic Table



Accessible Picnic Table



Freestanding Bench with Back



Boulder Bench



Bike Rack



Hot Coal Bin



Litter / Recycling Receptacle



Drinking Fountain with
Bottle Filler

Kelly Street Neighborhood Park GDP Amendment

Planting Materials

PLANTING CHARACTER



NATIVE UNDERSTORY, SUCH AS



Artemisia californica



Baccharis pilularis 'Pigeon Point'



Encelia farinosa



Eriogonum spp.



Muhlenbergia rigens



Salvia spp.



PARK UNDERSTORY, SUCH AS



Baccharis pilularis 'Pigeon Point'



Lomandra longifolia 'Breeze'



Leymus condensatus 'Canyon Prince'



Westringia spp.



Pittosporum spp.



ORNAMENTAL UNDERSTORY, SUCH AS



Agave attenuata



Aloe spp.



Artemisia californica 'Canyon Gray'



Lantana spp.



Cistus purpureus



BIOFILTRATION BASIN WITH COBBLE AND BOULDERS, SUCH AS



Carex spissa



Festuca californica



Leymus condensatus 'Canyon Prince'



Juncus patens



Muhlenbergia rigens

TREE CHARACTER



CANOPY TREE, SUCH AS

Tipuana tipu
Ulmas parvifolia



SLOPE TREE, SUCH AS

Pinus halepensis
Podocarpus gracilior



SPECIMEN TREE, SUCH AS

Quercus agrifolia
Quercus engelmannii
Quercus suber



ACCENT TREE, SUCH AS

Acacia podalyriifolia
Arbutus 'marina'
Cassia leptanthera



NATIVE TREE, SUCH AS

Alnus rhombifolia
Heteromeles arbutifolia



Thank you

S P U R L O C K
Landscape Architecture
Urban Design +
Planning