

# Mid-City Communities Plan Update



**PLAN  
MID-CITY**  
*Communities Plan Update*

**City Planning Department**

Mid-City CPU Working Group – December 11, 2024



1. Introduction (10 min)
2. Draft Existing Conditions Mobility Assessment Presentation (15 min)
  - WG Discussion & Questions (20 min)
3. Historic Preservation Presentation (15 min)
  - WG Discussion & Questions (20 min)
4. Public Comment (20 min, approximately 7:40-8:00)
5. Conclusion & Next Steps (5 min)





# Introduction

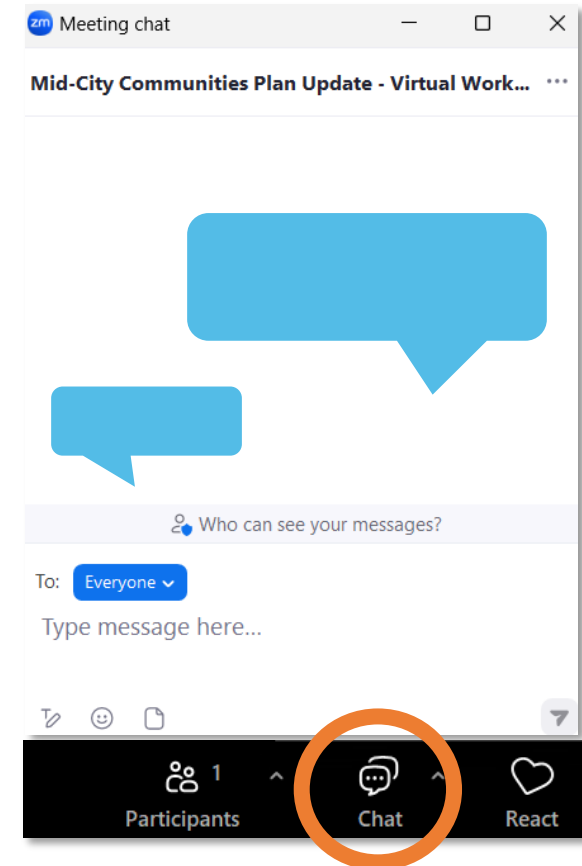


- Be involved in the plan update from start to finish.
- Review project materials related to public engagement, research, and technical studies.
- Suggest ideas that could be included in the plan update.
- Provide feedback on proposals related to the plan update.



## Webinar

- Meeting is being recorded.
- Use the Chat to share written questions or comments during presentation.
- During the WG discussion please raise your hand virtually using the **“Raise Hand”** function.
- Public Comment Period at the end. Please raise your hand virtually using the **“Raise Hand”** function.



- Interact respectfully with project staff, Working Group members and members of the community.
- Stay concise to create time for as many voices in the room to contribute.
- Consider the diverse needs and goals of the Mid-City communities and work to provide inclusive input and resources.
- Share relevant, on-topic perspectives and information.
- Help maintain a welcoming and inclusive environment that values all perspectives.



# MID-CITY PLANNING AREA & NEIGHBORHOODS

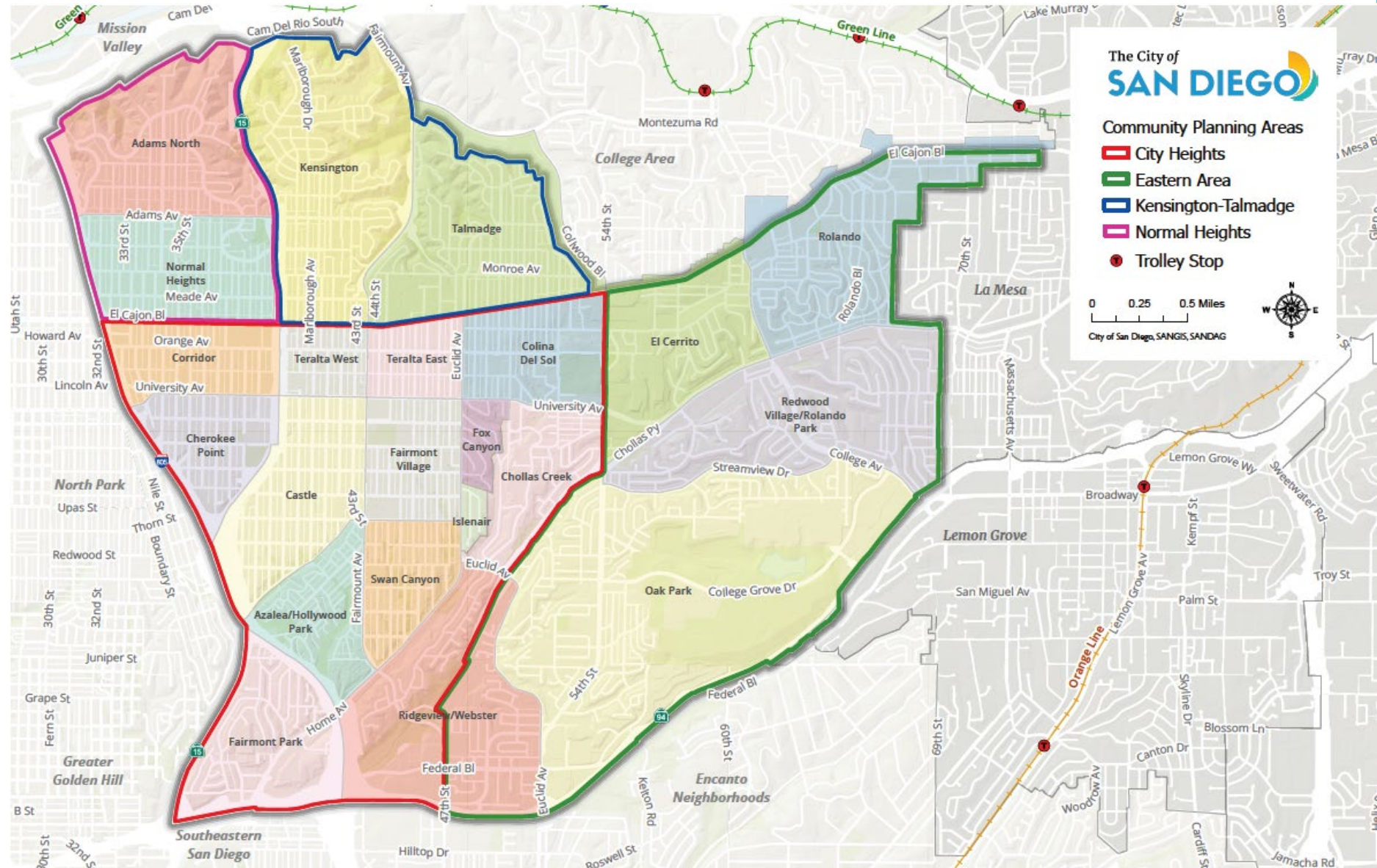
## Mid-City Communities

- City Heights
- Eastern Area
- Kensington-Talmadge
- Normal Heights

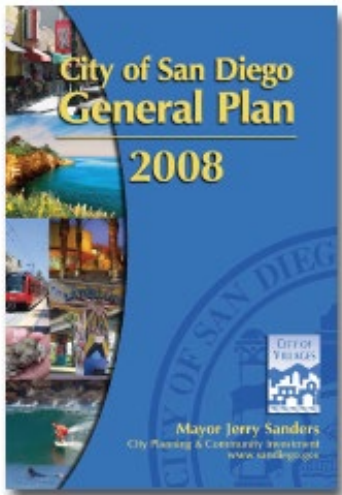
## Mid-City Snapshot\*

- 8,052 acres
- 133,267 people
- 52,300 homes
- 20,000 jobs
- 24,500 parcels
- 10% of the city population resides in Mid-City

\*SANDAG Estimate 2022; LEHD 2019; City of San Diego



The City is updating the Community Plan to help shape the future of Mid-City area for the next 20 to 30 years. The current plan was last adopted in 1998.

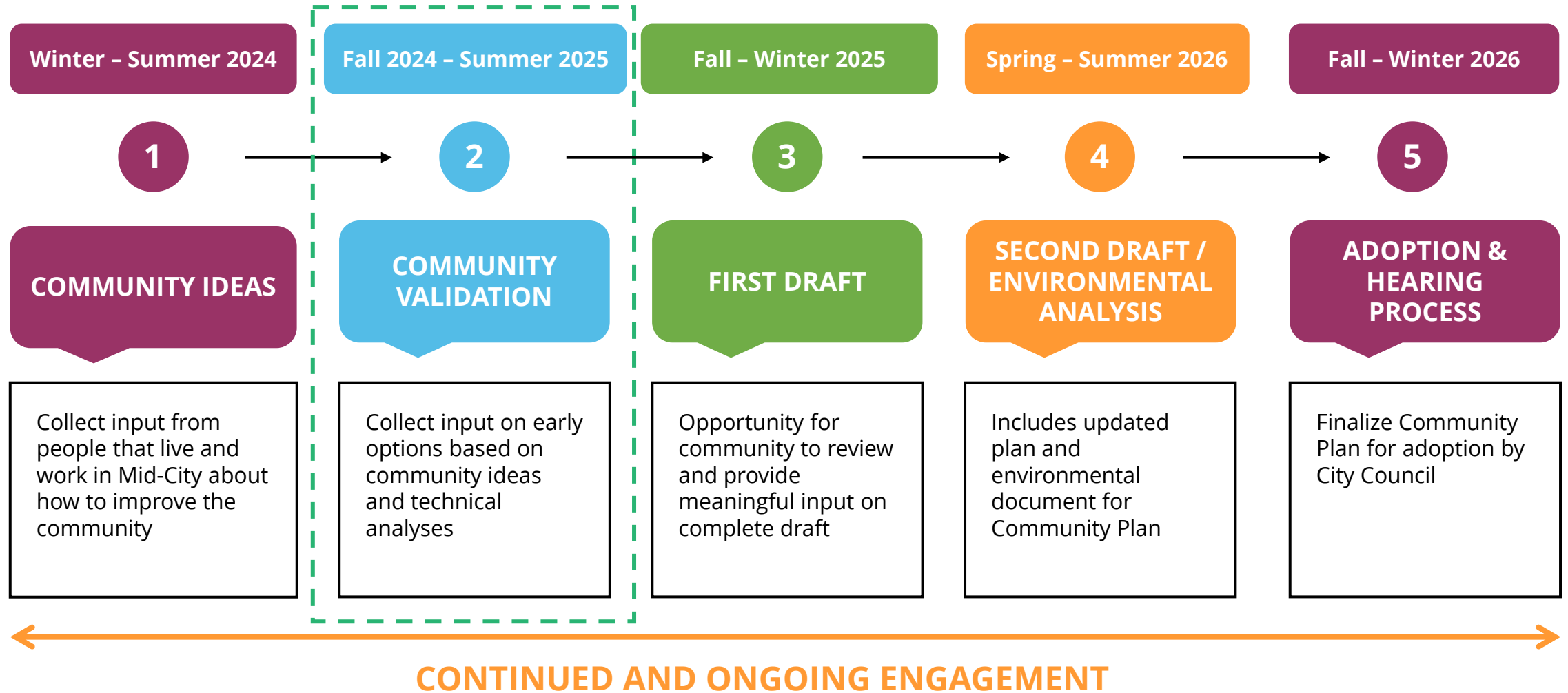


The update to the plan will serve as the 30-year vision for land use, mobility, urban design, public facilities and services, natural resources, historic and cultural resources and economic development.

- 1 Address Regional Growth & Housing Needs
- 2 Understand Community Needs & Enhance Quality of Life
- 3 Evaluate Infrastructure Demand
- 4 Reduce Environmental Impact



# PROCESS & TIMELINE



## New Documents @ [www.PlanMidCity.org](http://www.PlanMidCity.org)

- Sept. 11<sup>th</sup> WG\* Meeting Summary - includes detailed answers to questions from the last meeting
- Draft Existing Conditions Mobility Assessment & Appendices
- Draft Response to Community Feedback - Mid-City Atlas: EC\* Report

## Upcoming Reports & PC Workshop

- Draft Historic Context Statement – Dec. 13<sup>th</sup>
- Draft Engagement Summary – Late Dec.
- Mid-City CPU Planning Commission Workshop – Jan. 9<sup>th</sup> (Info Item)
- Final Draft Mid-City Atlas: Existing Conditions Report – Early Feb.

## New Working Group Member

- Angelica Rocha (Eastern Area) has moved to San Francisco, so she is no longer available to serve in the Working Group
- Paul Smith (Eastern Area) has agreed to fill her spot







**Emanuel Alforja**  
Associate Traffic Engineer  
Sustainability and  
Mobility Department



**Phil Trom**  
Program Manager  
Sustainability and  
Mobility Department



**Bernie Turgeon**  
Senior Planner  
Heritage Preservation  
City Planning  
Department



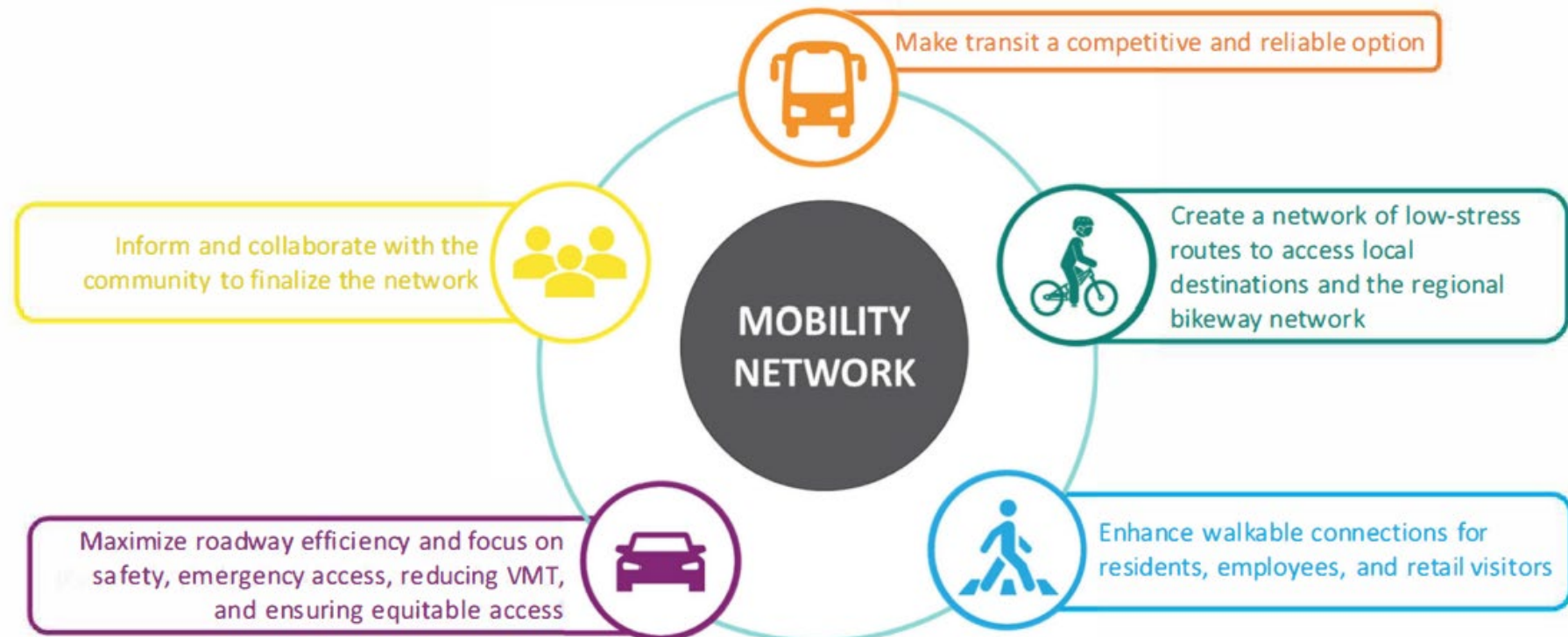
**Kelsey Kaline**  
Associate Planner  
Heritage Preservation  
City Planning  
Department



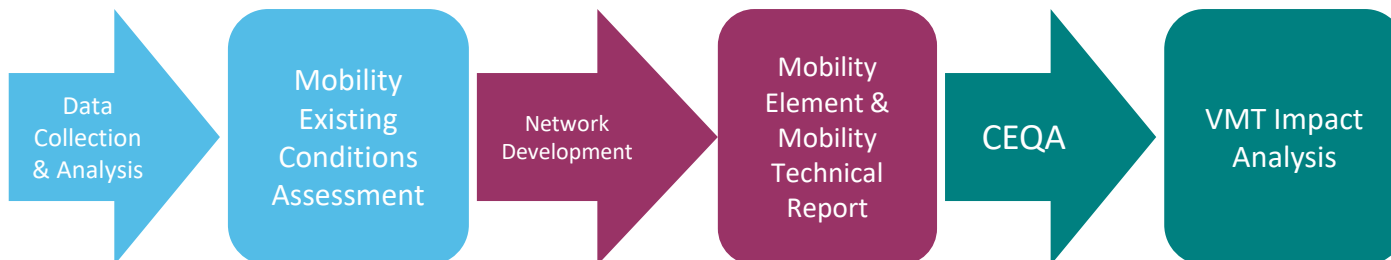
# Draft Existing Conditions Mobility Assessment



# MOBILITY PLANNING PROCESS



- Describes current state of mobility
- Quantitative and qualitative analyses by mode
- Understand opportunities and constraints
- Identify mobility needs by mode





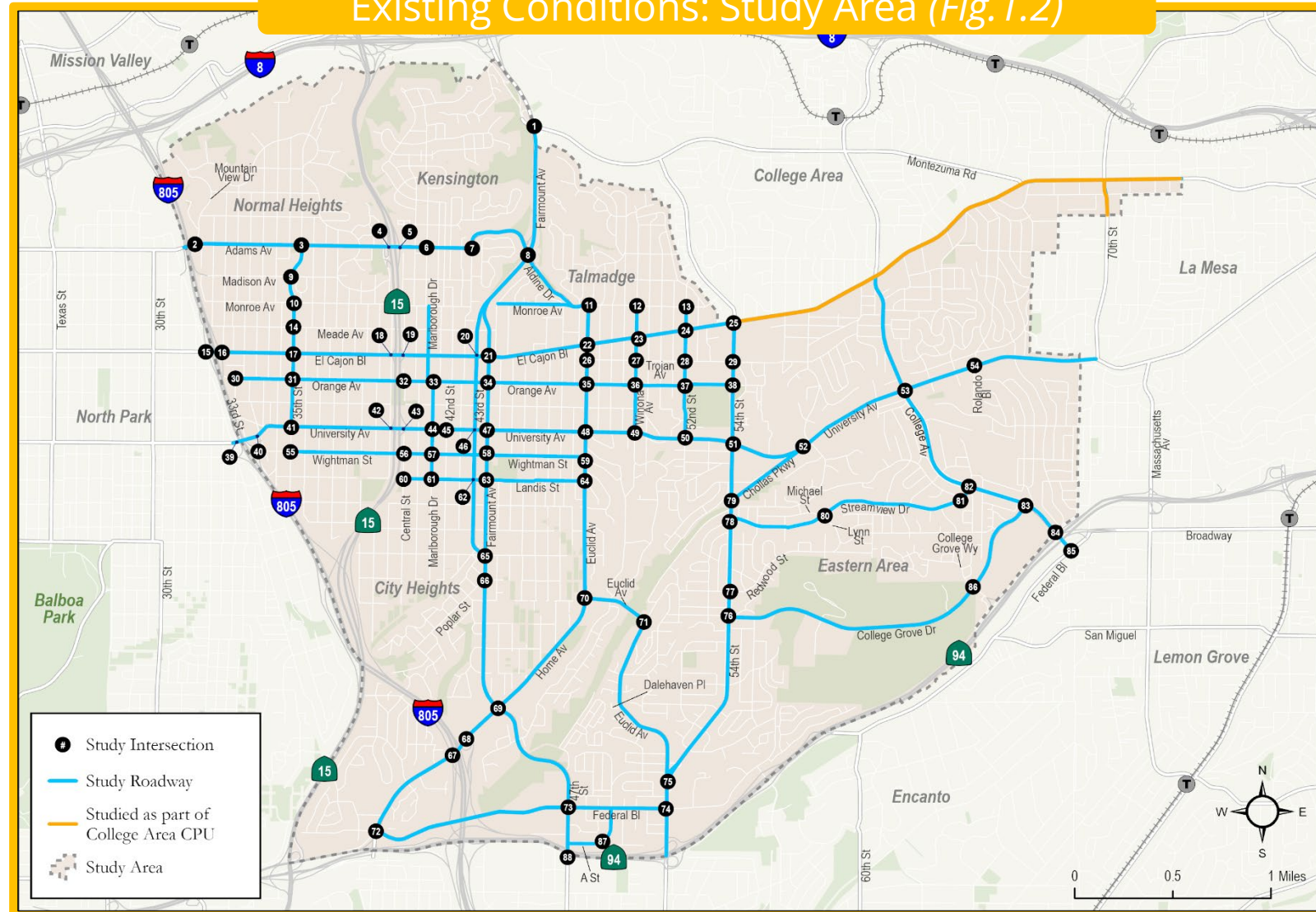
# METHODOLOGY OF E.C. MOBILITY ASSESSMENT

## Evaluation Categories

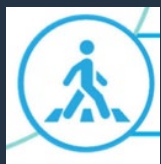
- Demand/Priority
- Quality
- Connectivity
- Safety



Existing Conditions: Study Area (Fig.1.2)







# E.C. MOBILITY ASSESSMENT – PEDESTRIAN NEEDS

## Data & Analysis

Intersection Counts

5 -Year Collision History

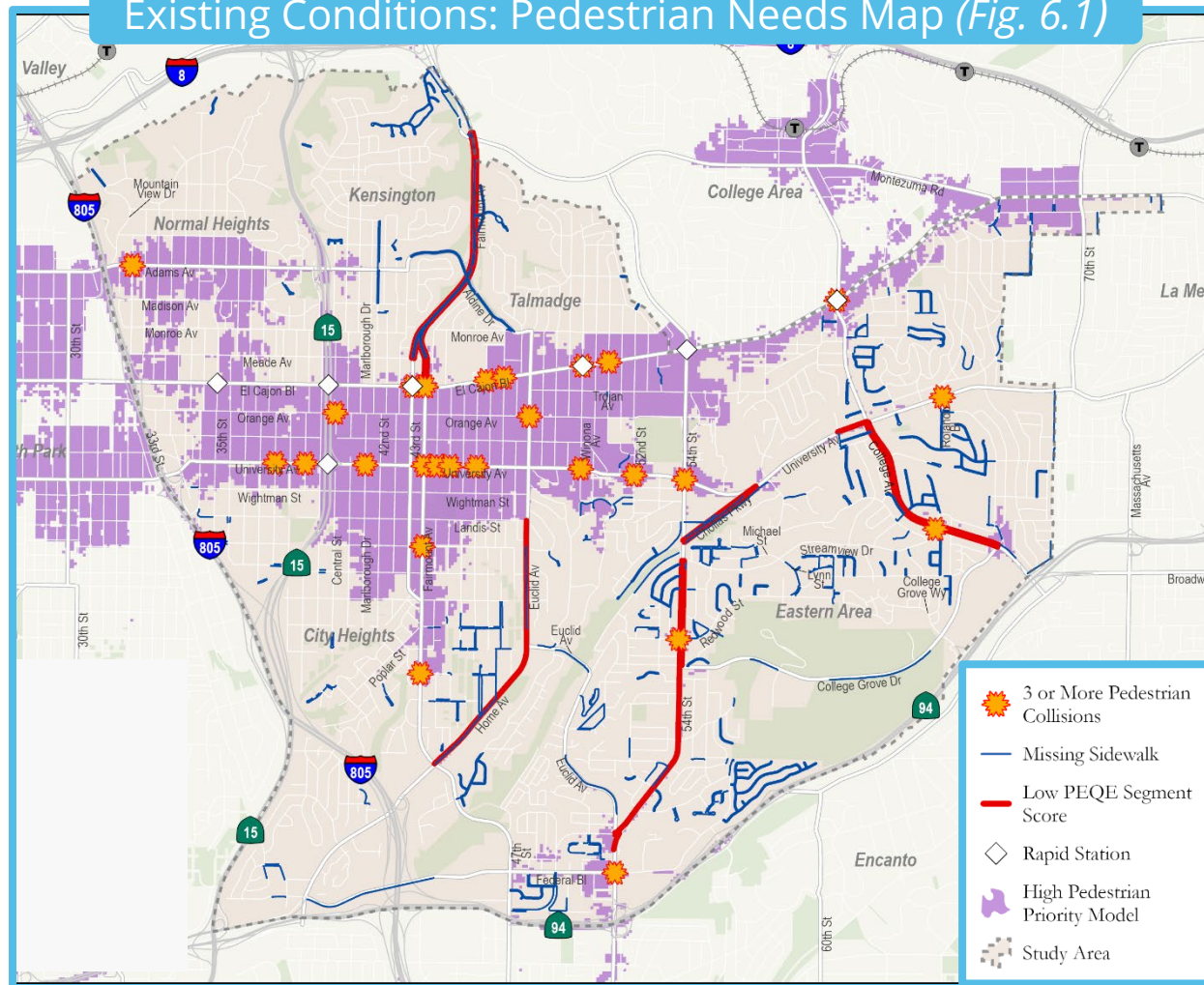
Missing Sidewalks

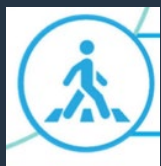
Pedestrian Priority Model

Pedestrian Connectivity

Pedestrian Environment Quality Evaluation (PEQE)

Existing Conditions: Pedestrian Needs Map (Fig. 6.1)





# E.C. MOBILITY ASSESSMENT – PEDESTRIAN NEEDS

## Data & Analysis

Intersection Counts

5 –Year Collision  
History

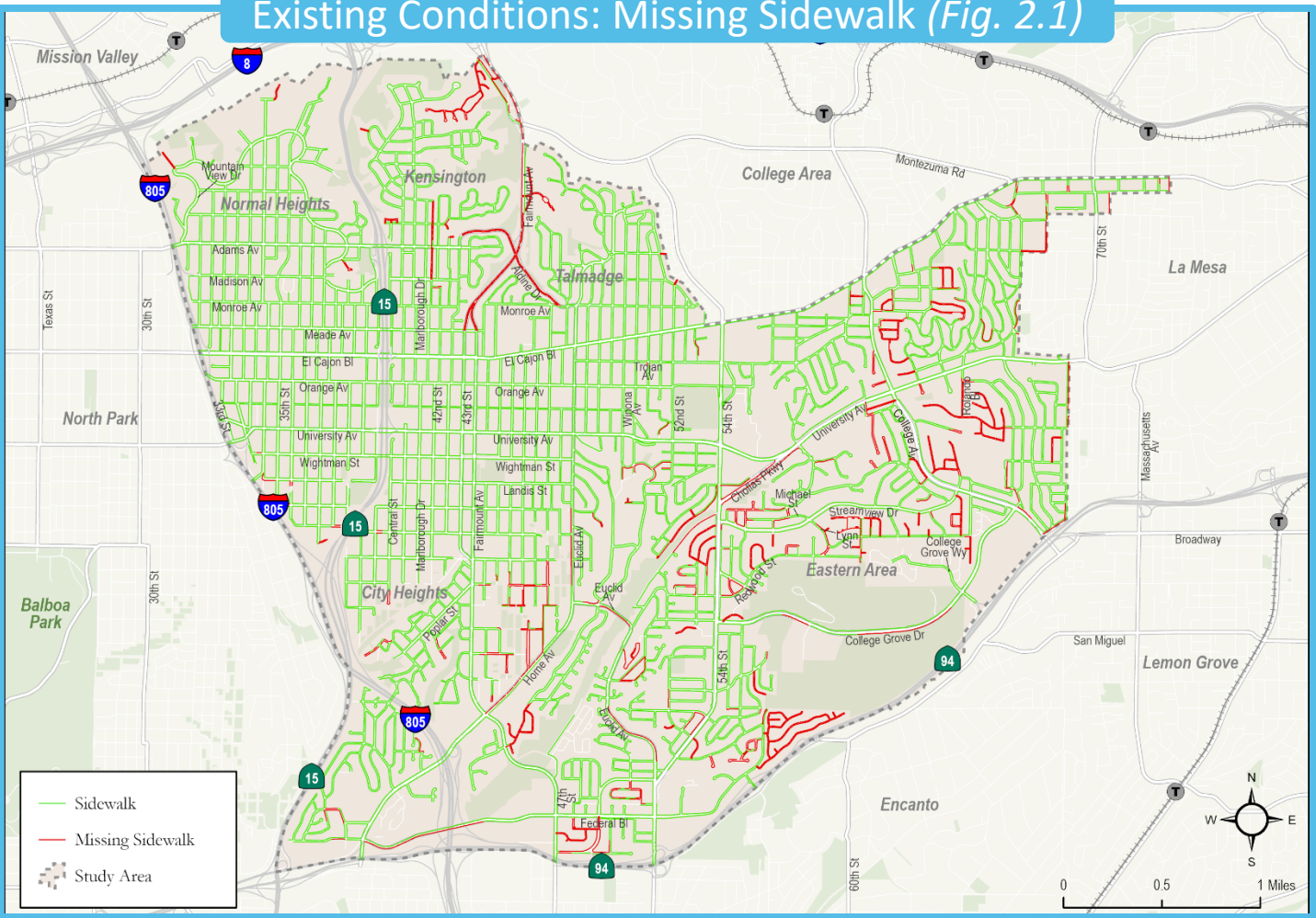
Missing Sidewalks

Pedestrian Priority  
Model

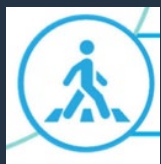
Pedestrian  
Connectivity

Pedestrian Environment  
Quality Evaluation (PEQE)

Existing Conditions: Missing Sidewalk (Fig. 2.1)





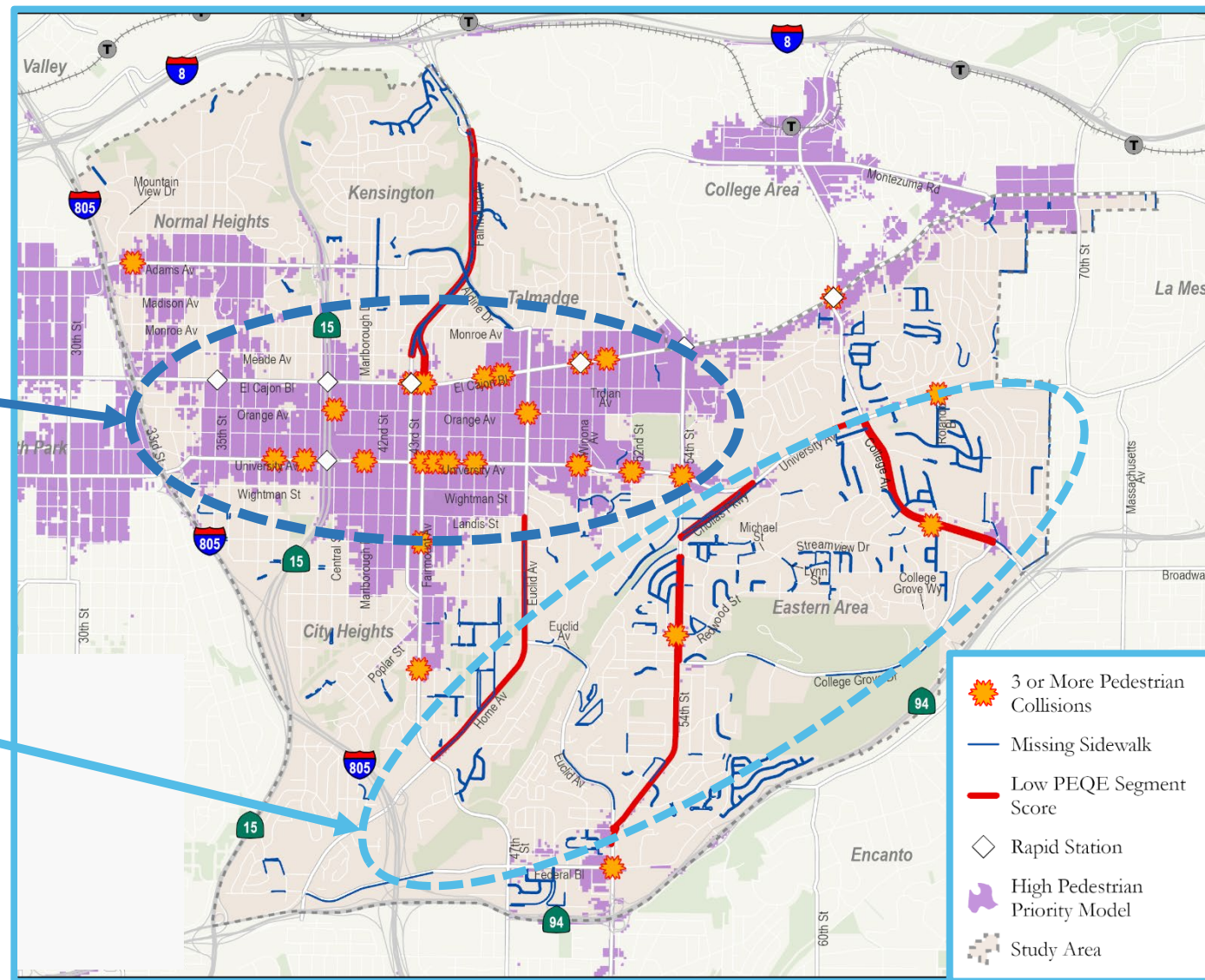


# E.C. MOBILITY ASSESSMENT – PEDESTRIAN NEEDS

## Existing Conditions: Pedestrian Needs Map (Fig. 6.1)

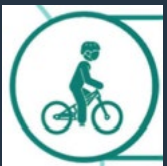
High Priority/Demand with  
3 or more pedestrian  
involved collisions in a 5-  
year period.

Missing sidewalks and low  
scoring PEQE\* pedestrian  
facilities.



\*PEQE = Pedestrian Environment Quality Evaluation





# E.C. MOBILITY ASSESSMENT – BICYCLE NEEDS

## Data & Analysis

Intersection Counts

5 –Year Collision  
History

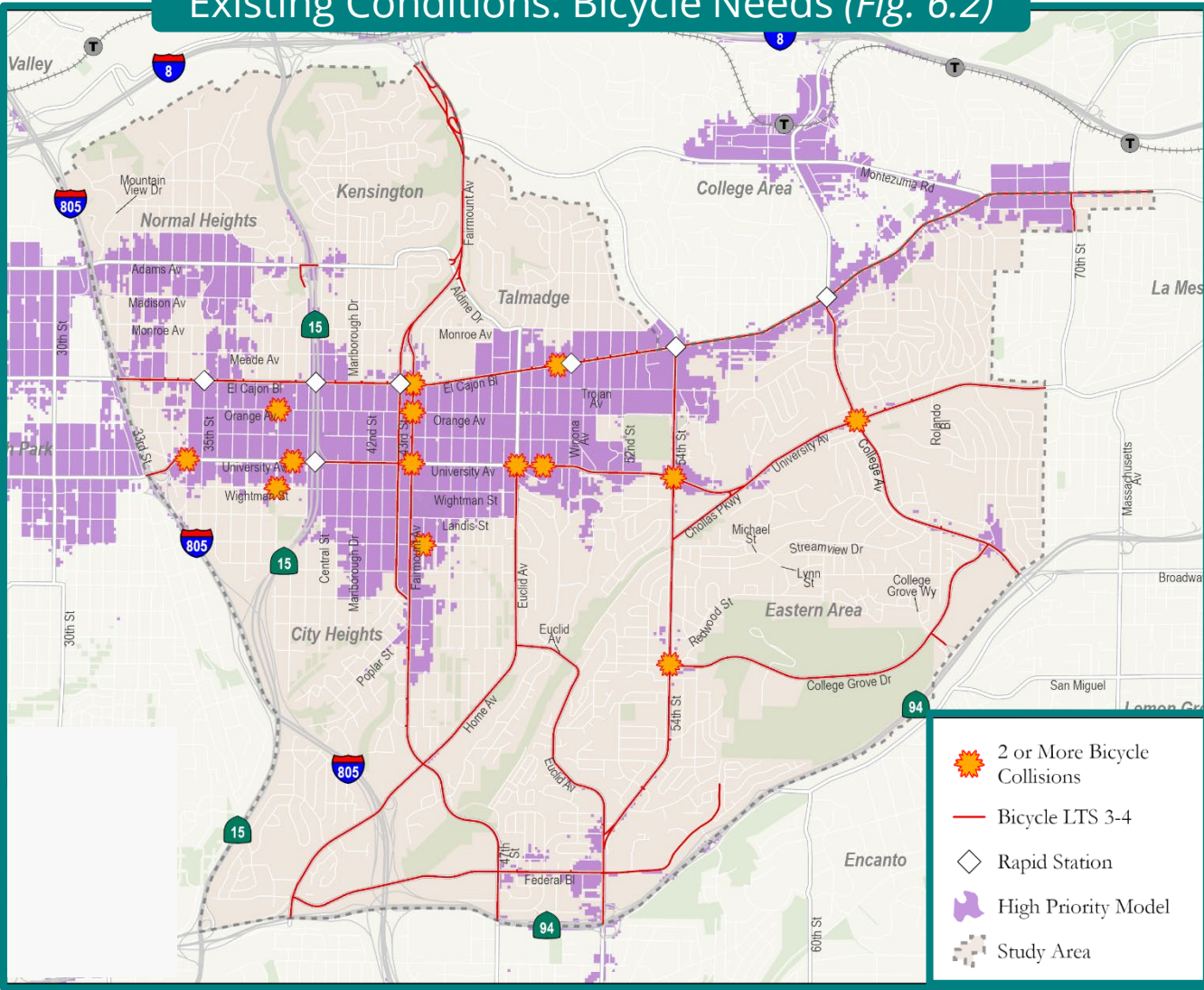
Existing Facilities  
Inventory

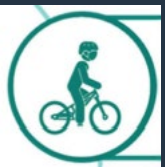
Bicycle Demand  
Model

Bicycle Connectivity

Bicycle Level of  
Traffic Stress

Existing Conditions: Bicycle Needs (Fig. 6.2)



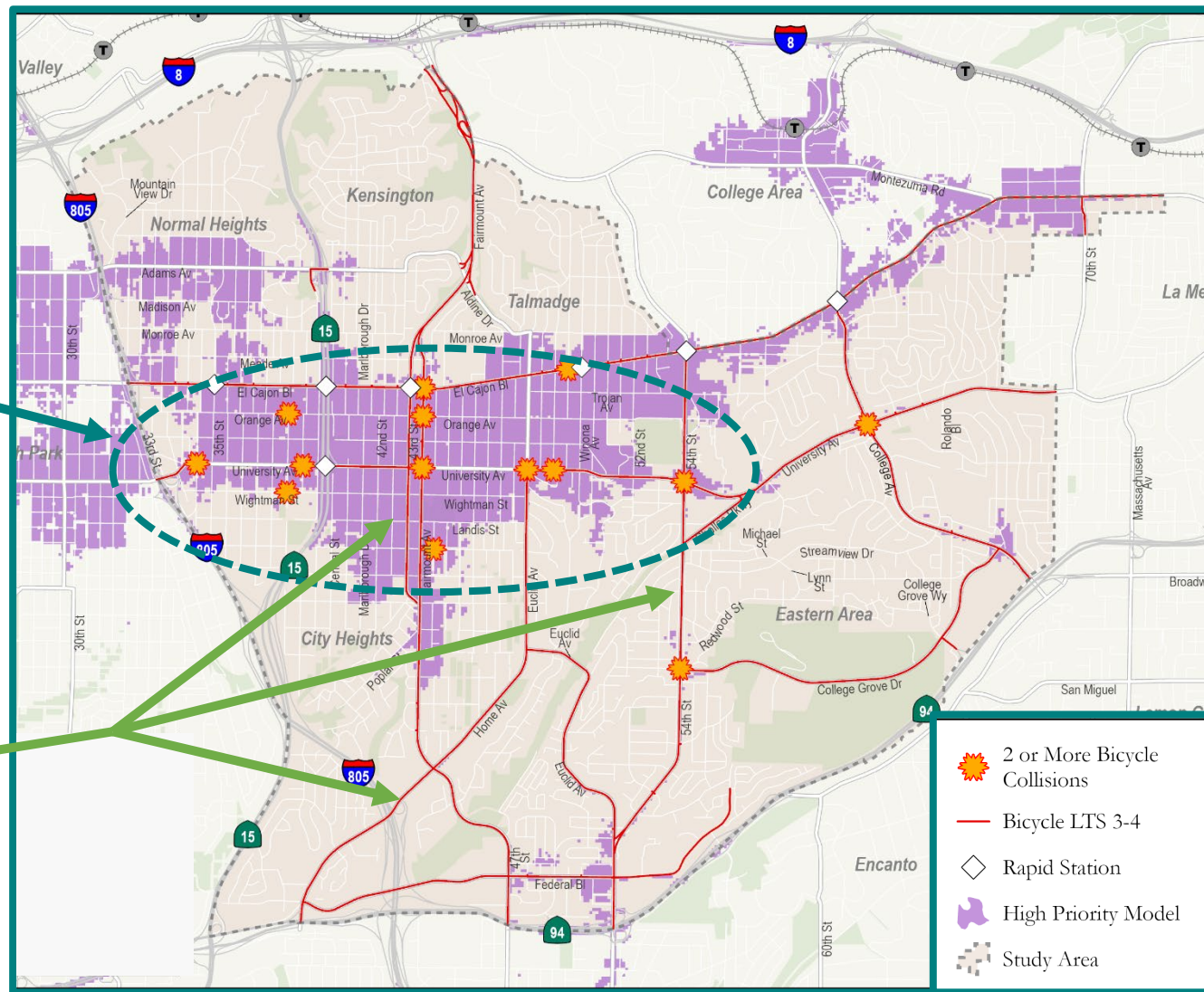


# E.C. MOBILITY ASSESSMENT – BICYCLE NEEDS

## Existing Conditions: Bicycle Needs (Fig. 6.2)

High demand/priority with 2 or more cyclist involved collisions over a 5-year period.

High Bicycle Level of Traffic Stress (LTS) on most major corridors throughout the Mid-City Communities.

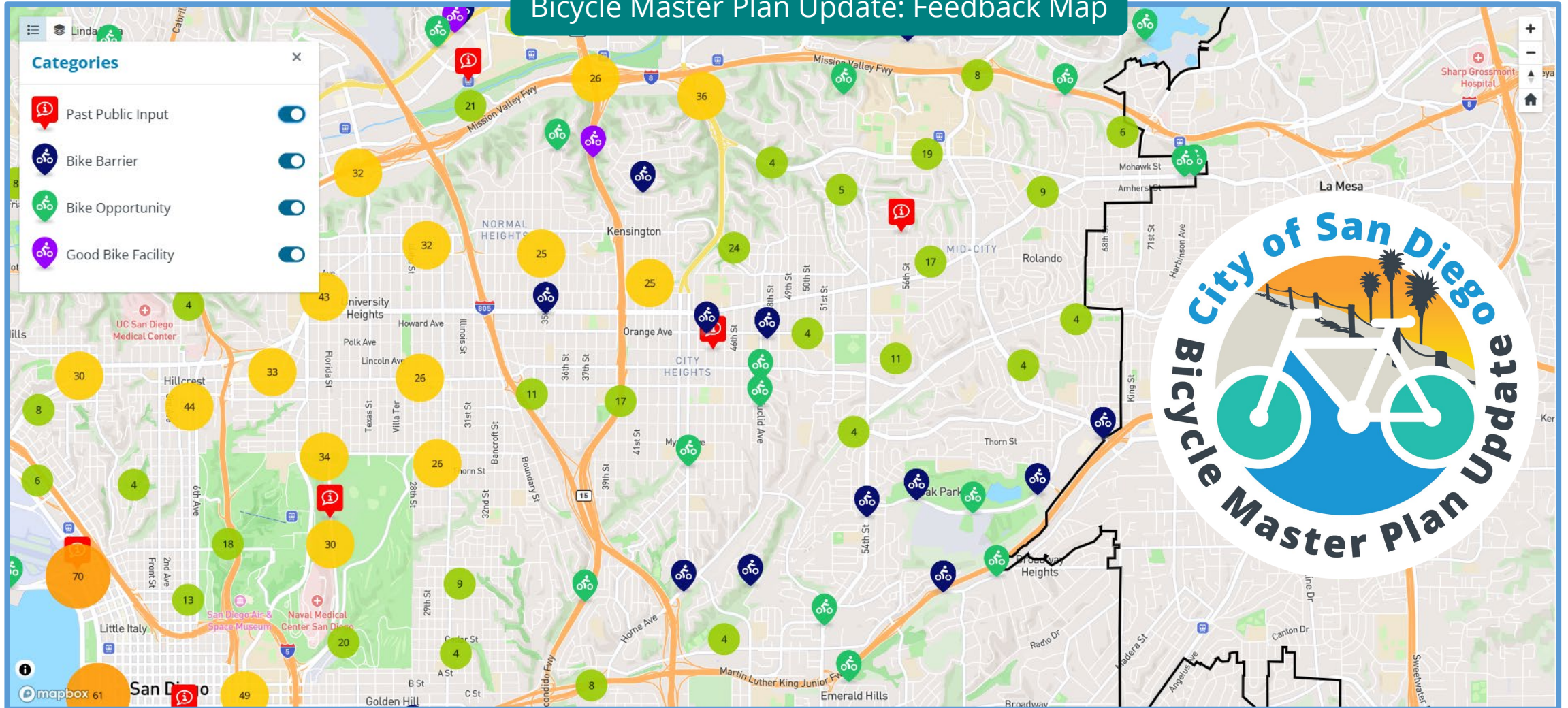






# E.C. MOBILITY ASSESSMENT – BICYCLE NEEDS

## Bicycle Master Plan Update: Feedback Map







# E.C. MOBILITY ASSESSMENT – TRANSIT NEEDS

## Data & Analysis

Intersection Counts



Roadway Segment  
Counts



5 –Year Collision  
History



Travel  
Time/Performance



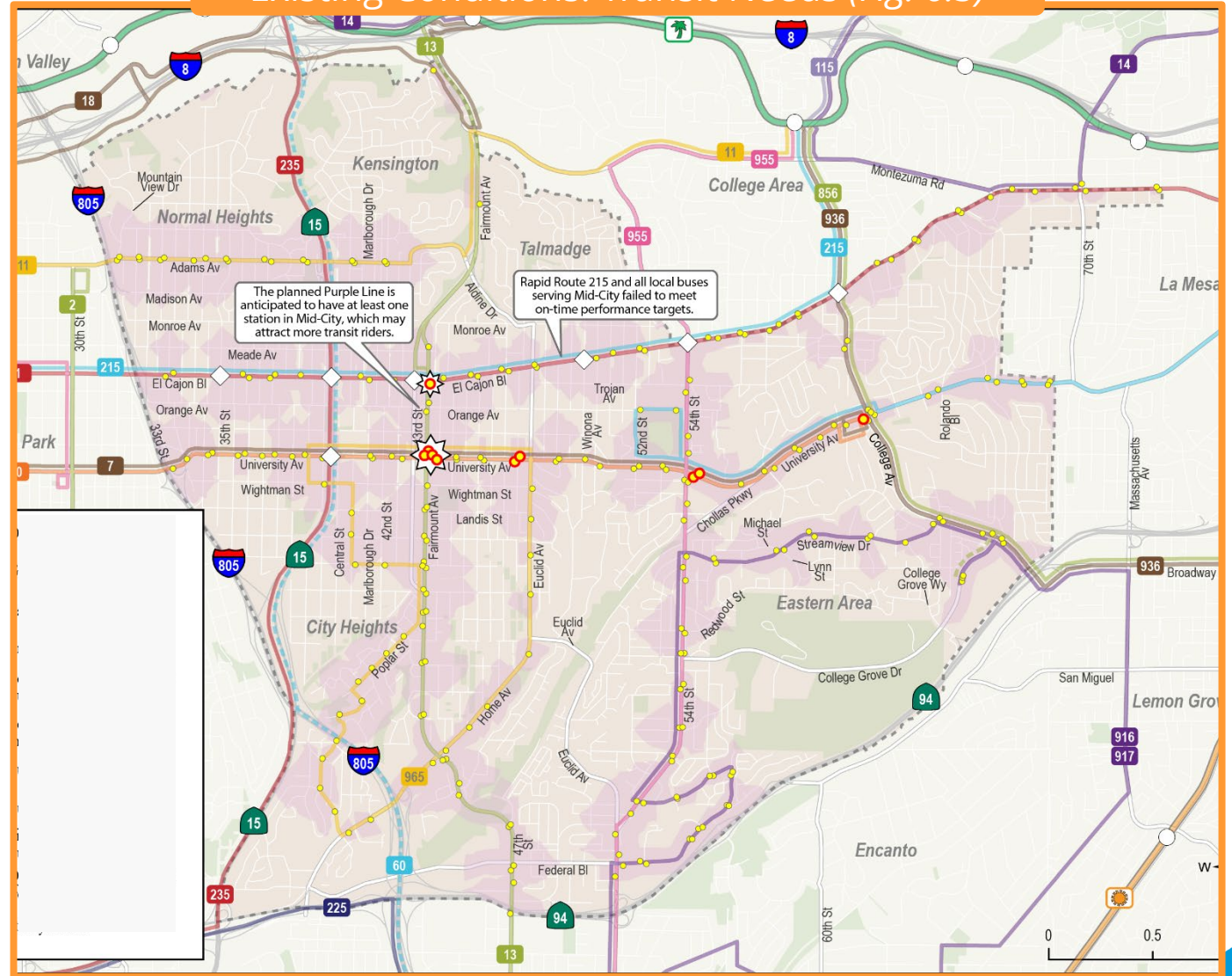
MTS Ridership Data



Travel Speed Ratio



Existing Conditions: Transit Needs (Fig. 6.3)





# E.C. MOBILITY ASSESSMENT – TRANSIT NEEDS

## Data & Analysis

Intersection Counts

Roadway Segment  
Counts

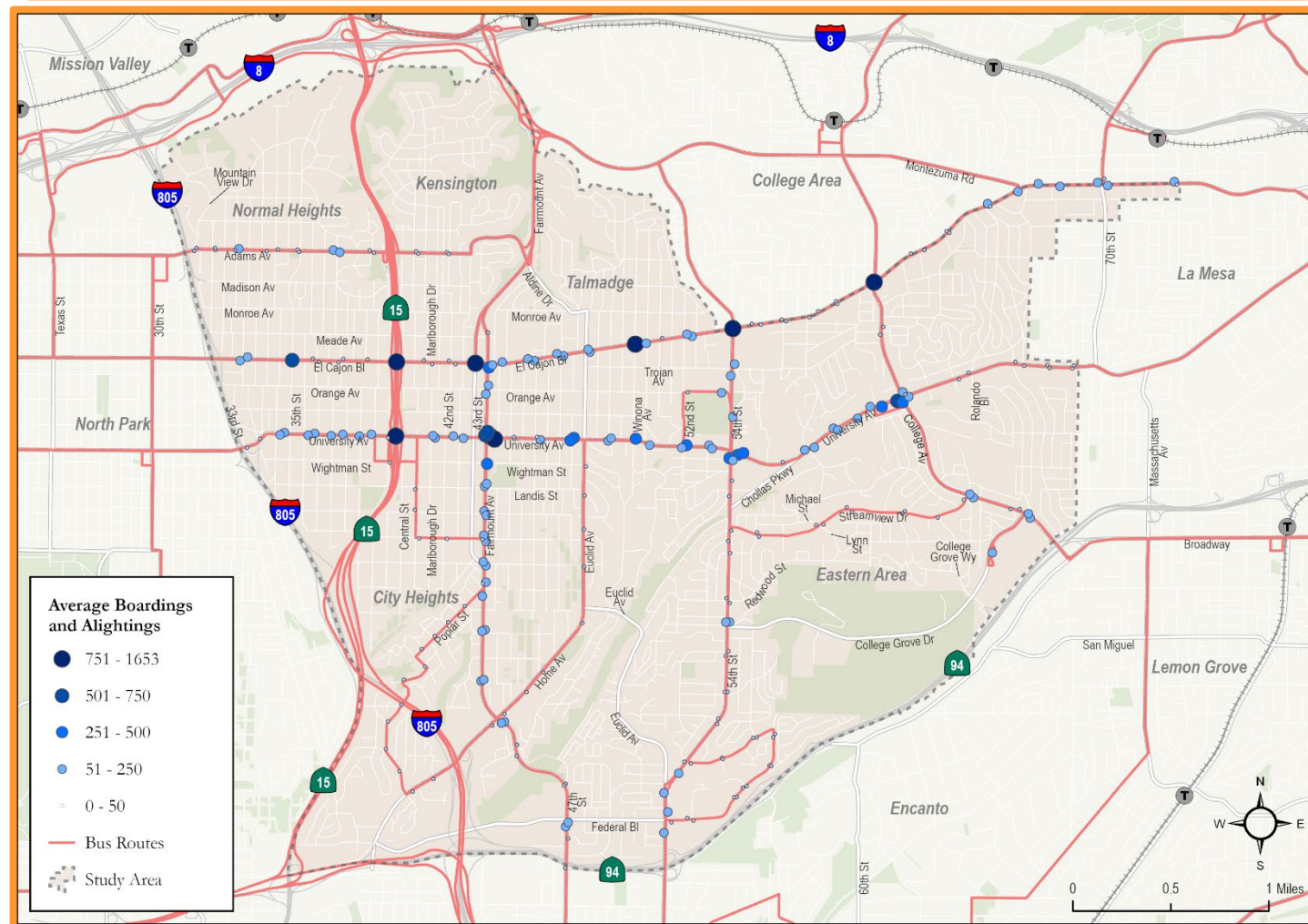
5 –Year Collision  
History

Travel  
Time/Performance

MTS Ridership Data

Travel Speed Ratio

Existing Conditions: 2023 Boardings and Alightings (Fig. 4.3)







# E.C. MOBILITY ASSESSMENT – TRANSIT NEEDS

## Existing Conditions: Transit Needs (Fig. 6.3)

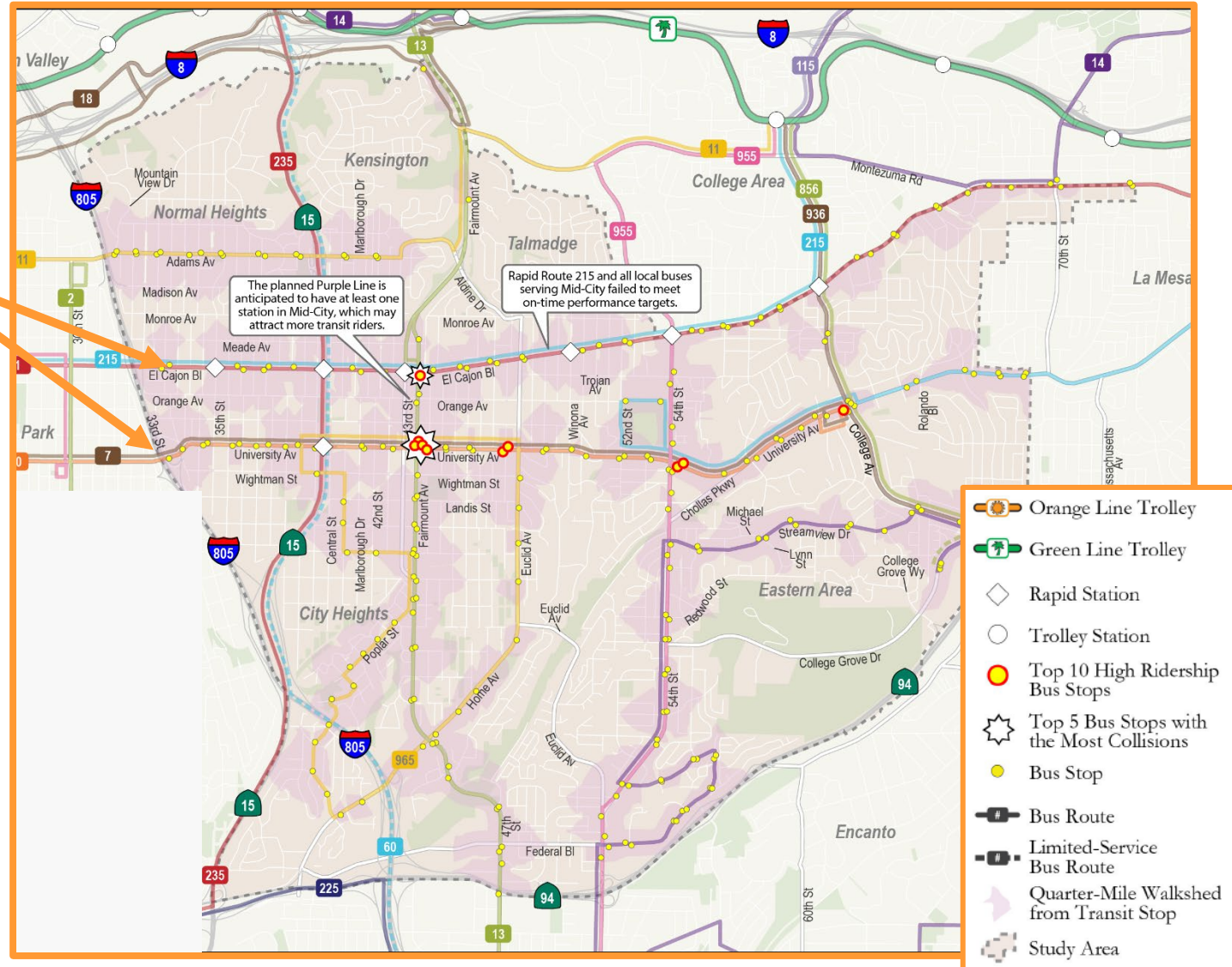
Highest ridership along ECB and University Avenue

Served by 14 MTS routes that share same infrastructure as general vehicle traffic

Table 4.2 - Public Transportation Commute Mode Share Comparison

	Mid-City	City of San Diego	San Diego County
Total Public Transportation Commuters	4,247	23,773	36,235
Total Workers	89,818	791,874	1,622,954
Public Transportation Commute Mode Share	4.7%	3.0%	2.2%

Source: US Census, 2022 American Community Survey 5-Year Estimates (2024)







# E.C. MOBILITY ASSESSMENT – VEHICULAR NEEDS

## Data & Analysis

Intersection Counts

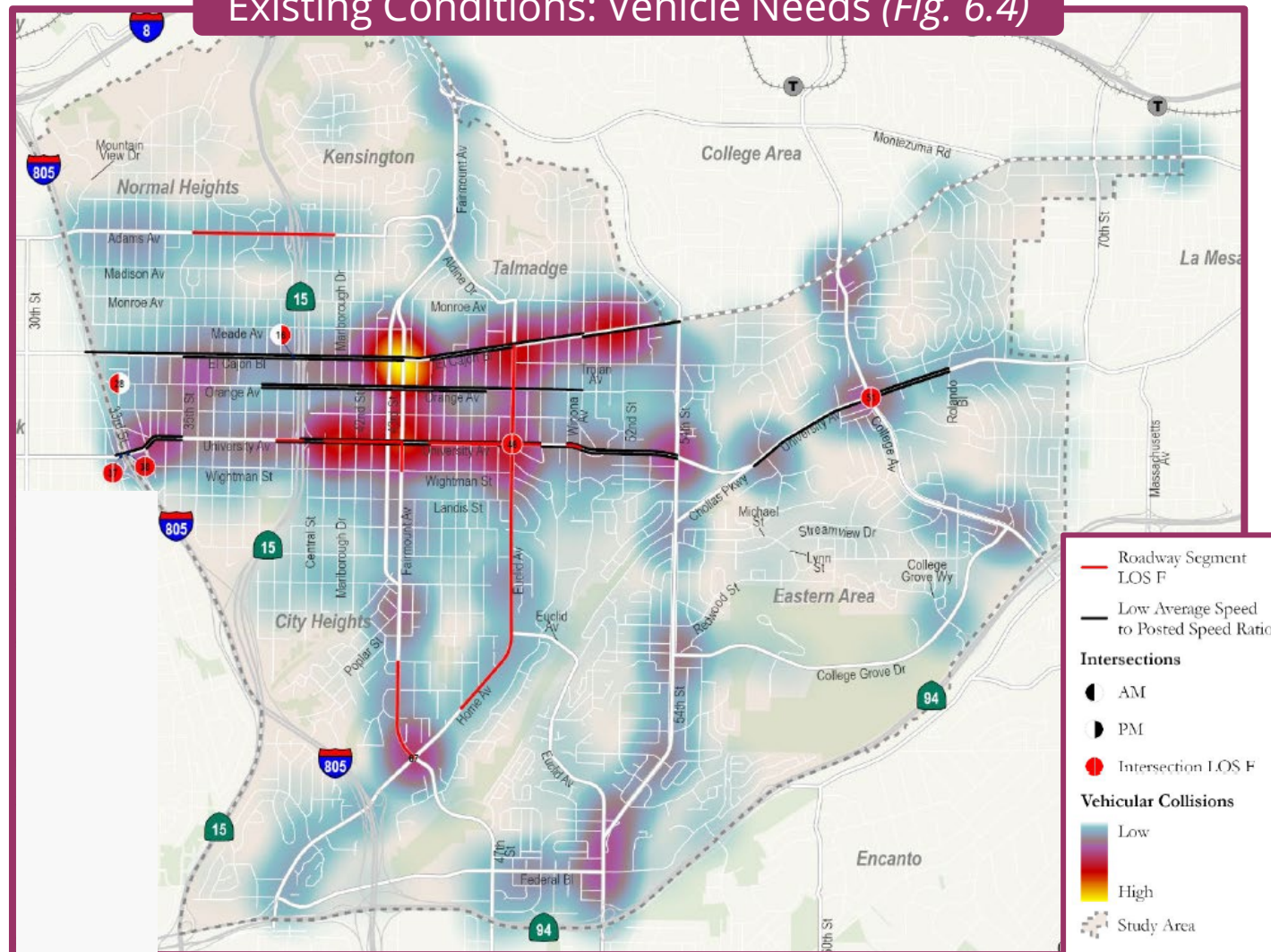
Average Daily  
Traffic

5 –Year Collision  
History

Travel Time

Travel Speed Ratio

Existing Conditions: Vehicle Needs (Fig. 6.4)





# E.C. MOBILITY ASSESSMENT – VEHICULAR NEEDS

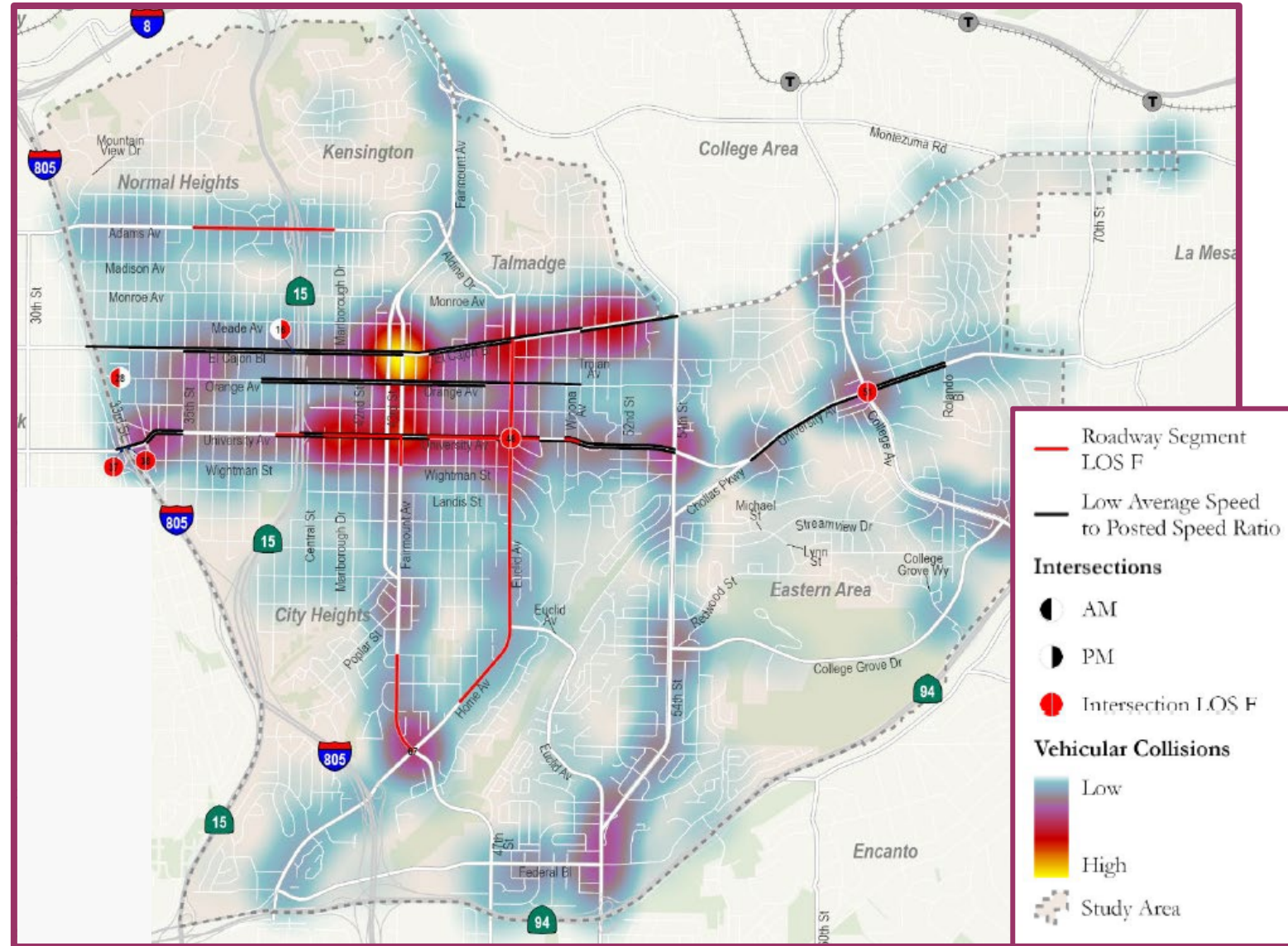
## Existing Conditions: Vehicle Needs (Fig. 6.4)

**Vehicular collisions concentrated along ECB, University and Fairmount**

**Low ratio of average travel speed to posted speed limit along major E-W corridors.**

**27 Study segments at LOS\* E or F. 24 serve transit routes.**

**11 Study intersections at LOS\* E or F.**



\*LOS = Level of Service





# E.C. MOBILITY ASSESSMENT – NEXT STEPS

- Draft available at [www.PlanMidCity.org](http://www.PlanMidCity.org)
- Comments requested by February 28, 2025
- Final Draft Spring 2025



Prepared For

The City of  
**SAN DIEGO**

Prepared By

**C+R**

CR Associates  
3900 Fifth Avenue, Suite 310  
San Diego, CA 92103



**Discussion Questions:** Answer one of the below

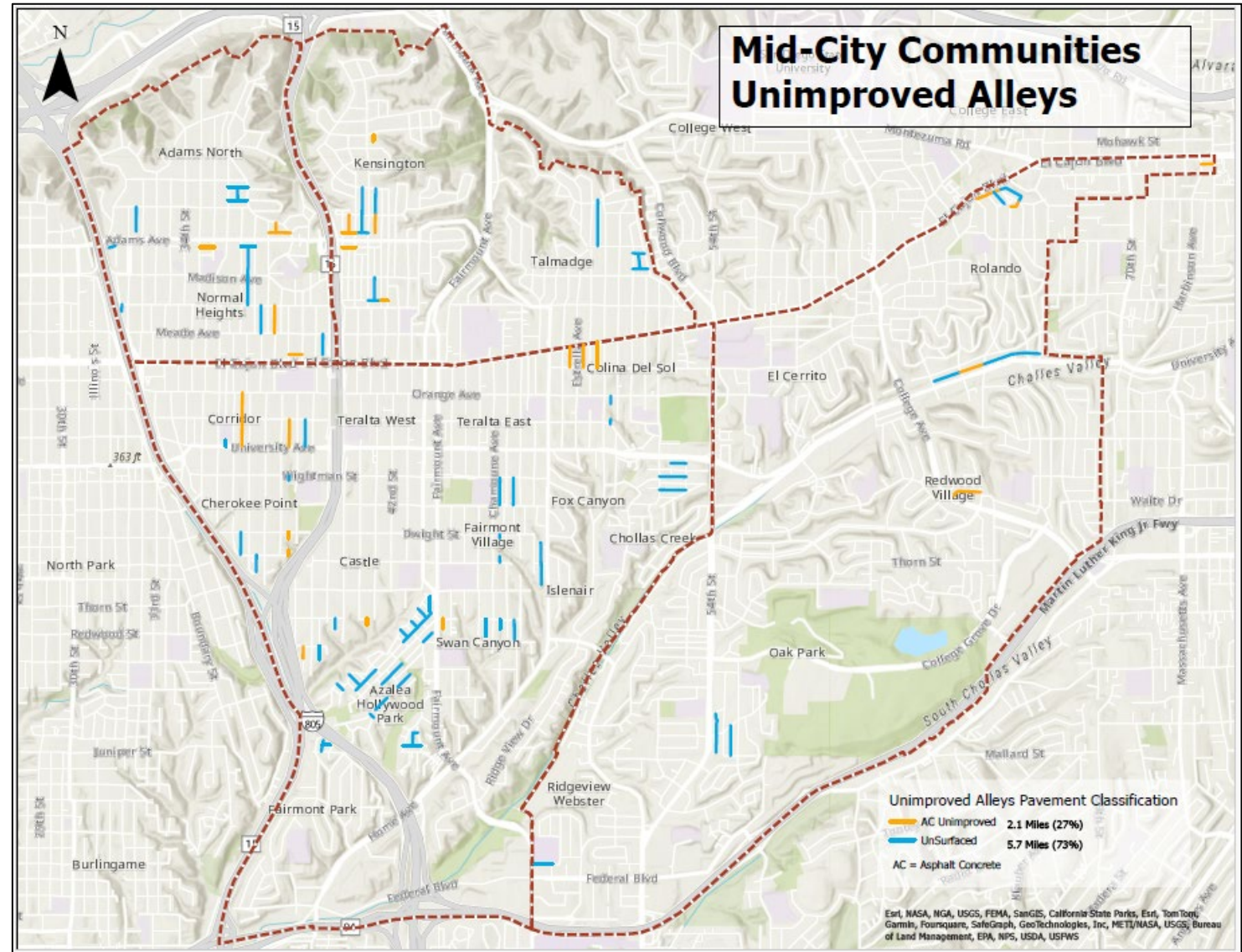
- Any clarifications or questions?
- Anything that stands out to you?
- Are there any mobility needs not showcased or explored in this analysis?

**Provide in Writing via Chat**

- Accuracy of text, charts, names, maps, etc.
- Detailed comments, especially if related to specific locations

## UNIMPROVED ALLEYS

- Unimproved Alleys – Council Policy 200-01:  
[https://docs.sandiego.gov/councilpolicies/cpd\\_200-01.pdf](https://docs.sandiego.gov/councilpolicies/cpd_200-01.pdf)
- City's Pavement Management Plan Report:  
<https://www.sandiego.gov/transportation/programs/pavement-management-plan>



# Street Lighting

## Standards and Guidance

- [Street Design Manual \(2017\)](#)
  - Currently undergoing an update
- Midblock Street Light Policy 200-18: [https://docs.sandiego.gov/council/policies/cpd\\_200-18.pdf](https://docs.sandiego.gov/council/policies/cpd_200-18.pdf)

## Mechanisms of Implementation

- Redevelopment Projects (DSD)
  - Project Frontage
- Capital Improvement Projects
- Undergrounding  
Program: <https://www.sandiego.gov/undergrounding>
- Transportation Department







# Historic Preservation



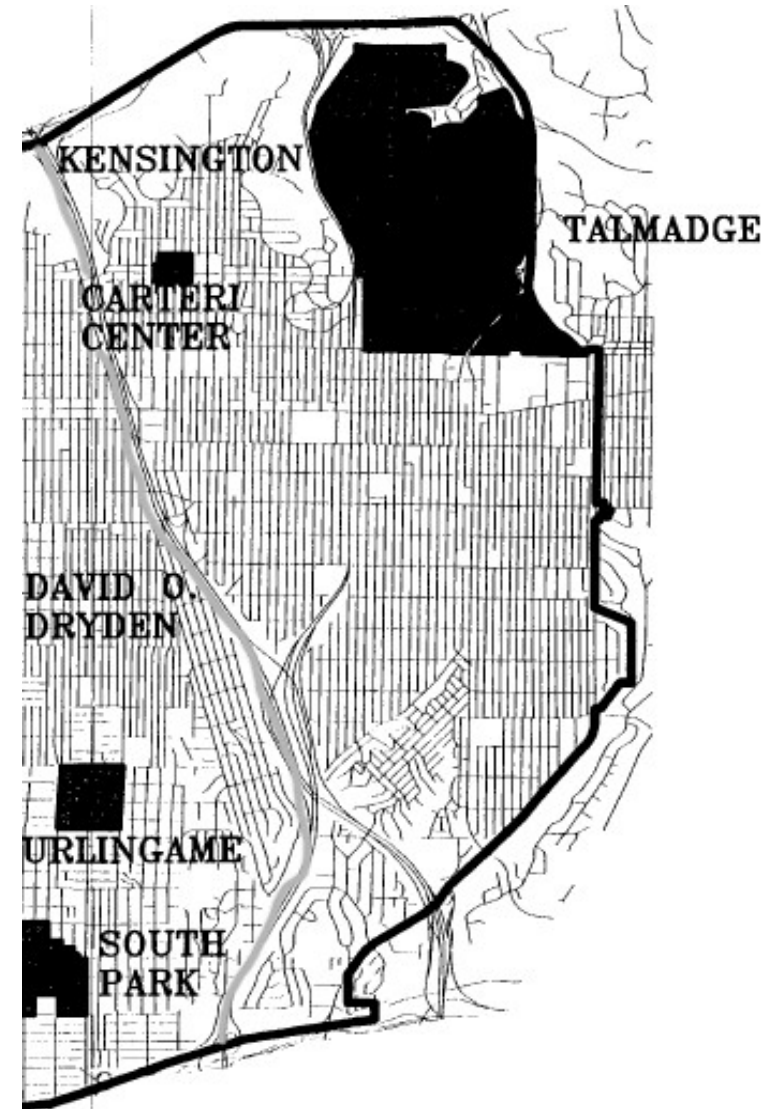


- ❖ Historic Context Statement
- ❖ Focused Reconnaissance Survey
- ❖ Code Amendment to the Historical Resources Guidelines to exempt specified areas from historic review (aka 45-year review process).
- ❖ Community Plan Historic Preservation Element
- ❖ Historical, Archaeological, and Tribal Cultural Resources Sections of the Program Environmental Impact Report.

## The Greater Mid-City Historic Preservation Survey (1996)



Adams Avenue and 33<sup>rd</sup> Street, Normal Heights





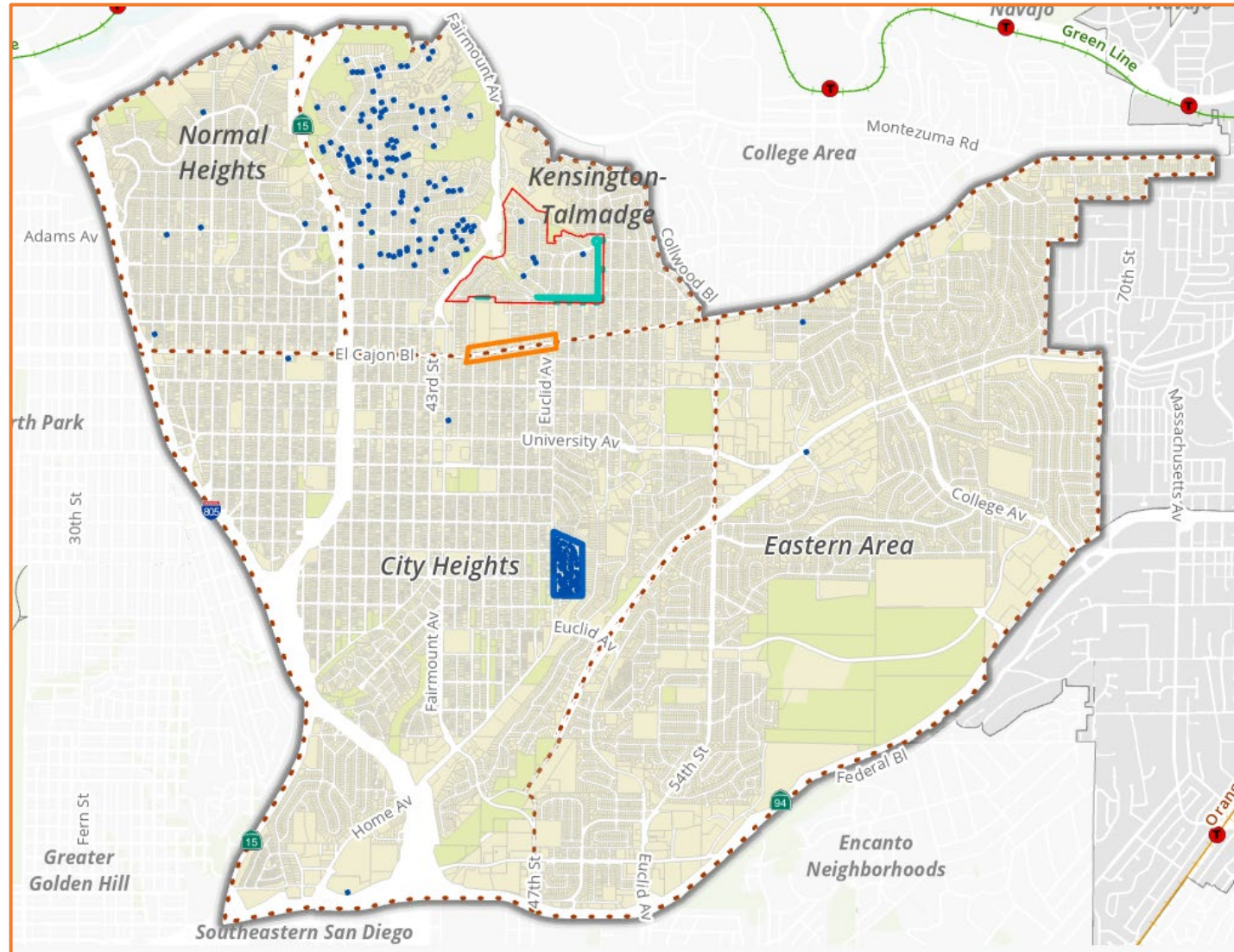
- Historic Designated Sites

## Historic Districts

- Islenair
- Talmadge Gates
- Talmadge Park Estates (NR District)

## Cultural District

- Little Saigon





# RESOURCES PREVIOUSLY IDENTIFIED





- ❖ Describes the significant historic themes and patterns that have contributed to the community's physical development
- ❖ Provides a foundation for identifying and evaluating historical resources within the plan area
- ❖ Guides future surveys and property-specific evaluations
- ❖ Facilitates preparation of the Historic Preservation Element of the CPU and the historical resource analysis of the Environmental Impact Report
- ❖ Does not result in the designation or regulation of properties

- Early Development of Streetcar Suburbs (1885-1915)
- The Independent City of East San Diego (1912-1923)
- Residence Parks & Speculative Residential Development (1915-1945)
- Early Commercial & Transportation Development (1915-1945)
- Post-World War II Commercial & Automobile-Related Development (1945-1984)
- Post-World War II Residential Development (1945-1984)
- Civic & Institutional Development (1900-1984)
- Immigration to Mid-City (1975-1990)



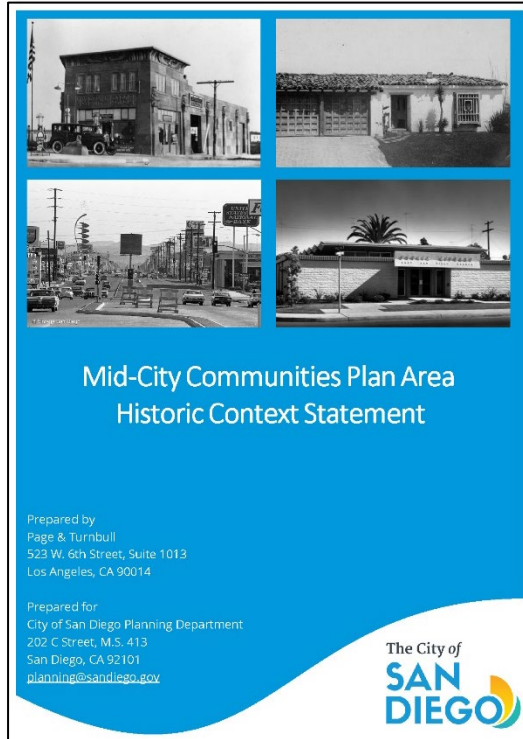


- ❖ Baseline Data: Historic Context Statement, Previous 1996 Mid-City Survey, designated resources, subdivision research etc.
- ❖ High-level field work (“windshield survey”)
- ❖ Identifies areas of shared development history
- ❖ Looks at these areas for their potential historic significance
- ❖ Potential historic districts are identified for further survey
- ❖ Post WWII tracts are evaluated for exemption from historical review
- ❖ All other areas remain subject to the potential historical resource review

- Areas with collective historic significance such as historic development, architecture, culture etc.
- Identify and protect historic features and elements that tell the story of why the district is significant
- Allow for new construction that complies with zoning and historic design standards
- Preservation and Progress initiative is underway with goal of providing objective design guidelines



Islenair Historic District



- Draft Historic Context Statement  
**Friday December 13<sup>th</sup>**
- Draft Reconnaissance Survey  
**February 2025**

**Project Webpage:** <https://www.sandiego.gov/planning/mid-city-communities-plan-update>

**CHRID:** <https://sandiego.cfwebtools.com/>



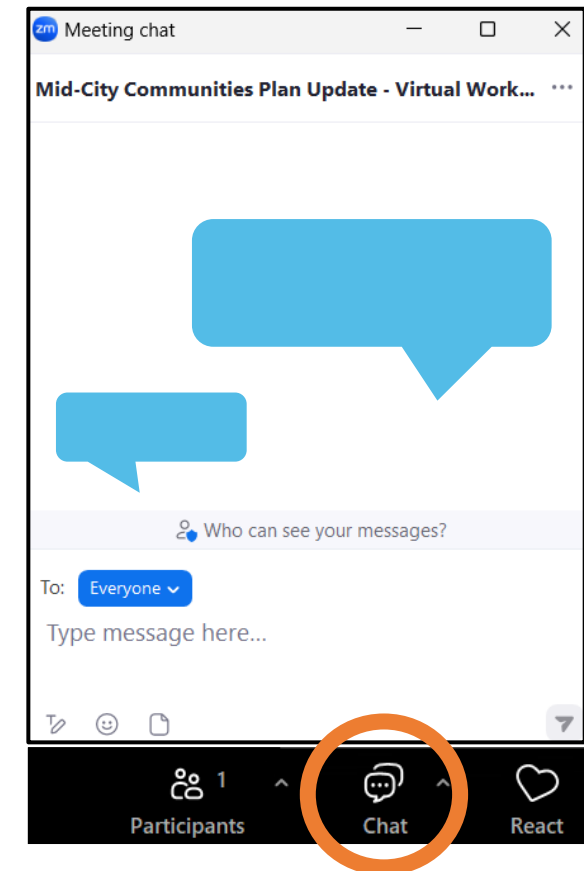
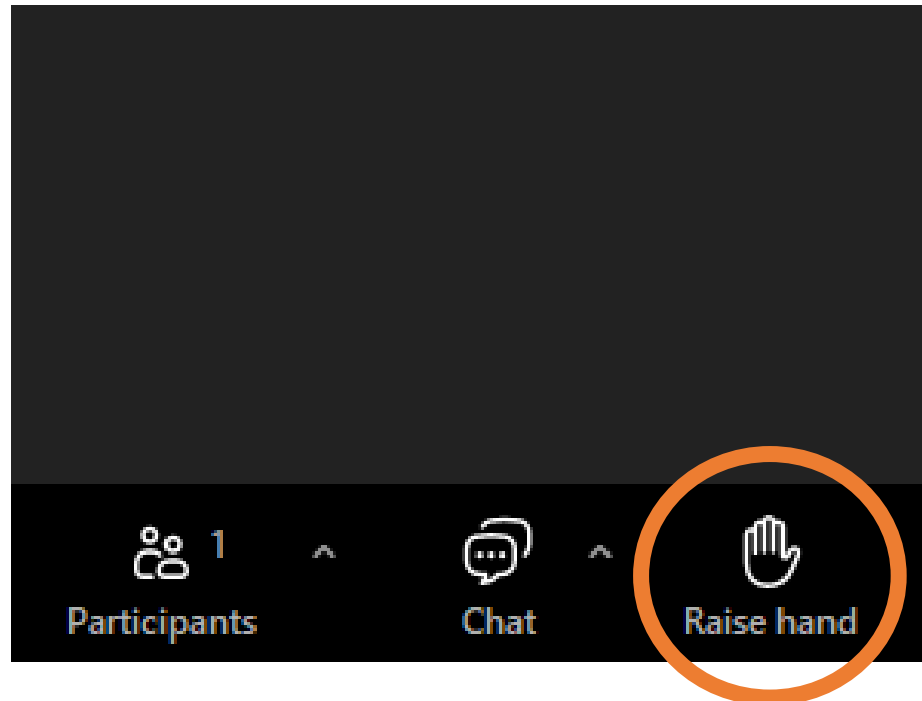
**Discussion Questions:** Answer one of the below

- Any clarifications or questions?
- Sites and resources that are important to you?
- What's important in social and cultural history of the Mid-City communities that we should be aware of?



# Public Comment

1. Write your comment in the **chat** and it will be recorded/documented
2. Raise hand virtually using the “**Raise Hand**” function.
3. When it's your turn we will unmute you





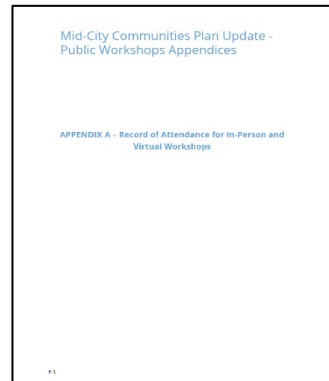
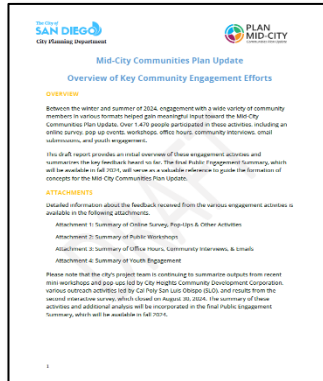


# Conclusion & Next Steps



# RECENT & UPCOMING PUBLIC ENGAGEMENT DOCUMENTS

## Summer

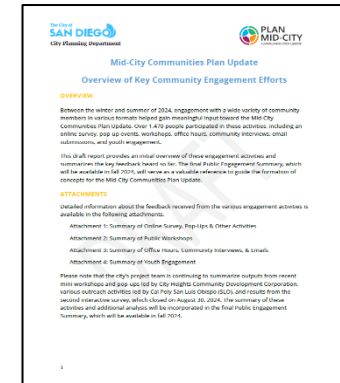


### Key Engagement Efforts & Appendices:

1. Online Survey & Pop-Ups
2. Workshops (Appendices)
3. Office Hours, Community Interviews & Emails
4. Youth Engagement

Released Sept. 4, 2024

## Fall/Winter



### Draft Engagement Summary & Appendices:

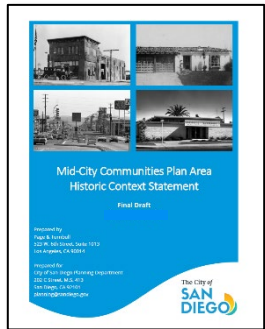
1. Online Survey & Pop-Ups
2. Workshops
3. Office Hours, Community Interviews & Emails
4. Youth Engagement
5. City Heights CDC led activity
6. Cal Poly SLO led activity
7. Interactive Survey
8. Community Forums

5,500+ Comments from 2,500+ ppl via 2 surveys & 83 events

# UPCOMING REPORTS & STUDIES

**Fall**

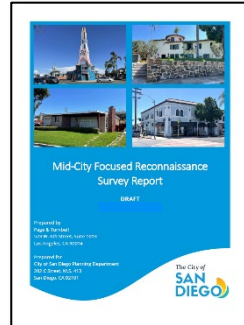
**Historic Context Statement**



**A Guide for Evaluating Historical Resources**

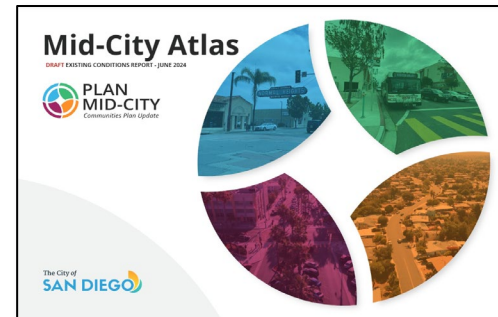
**Winter**

**Focused Historic Reconnaissance Survey**



**Winter**

**Final Draft Mid-City Atlas: Existing Conditions Report**



**Baseline**

**Spring**

**Ideas Report**



**Draft Framework, Vision & Concepts**

**FURTHER OPPORTUNITY TO PROVIDE INPUT**



- **Visit the Project Website & Sign-Up for Updates @ [www.PlanMidCity.org](http://www.PlanMidCity.org)**
- **Provide Public Comment to:**
  - Draft Mid-City Atlas: Existing Conditions Report by Jan. 15, 2025
  - Draft Existing Conditions Mobility Assessment by Feb. 28, 2025
  - Draft Historic Context Statement by Feb. 28, 2025
- **Attend the Planning Commission Workshop (Informational Item)**
  - Existing conditions & engagement summary – January 9, 2025
- **Attend the Next Working Group Meeting – mid to late Feb (TBD)**
  - Hybrid meeting - engagement summary and historic context & survey

**Email Us**

Send additional comments, suggestions or questions to [PlanMidCity@SanDiego.gov](mailto:PlanMidCity@SanDiego.gov) and a Community Planner will get back to you.

A festive graphic featuring the words "Happy Holidays!" in a hand-drawn style. The word "Happy" is in a small, black, sans-serif font, while "Holidays!" is in a large, black, cursive script. The text is surrounded by several blue snowflakes and small, multi-colored dots (confetti) in red, yellow, and green. The entire graphic is centered on a white background.

HAPPY  
Holidays!

# Mid-City Communities Plan Update



**PLAN  
MID-CITY**  
*Communities Plan Update*

**City Planning Department**  
Mid-City CPU Working Group – Dec. 11, 2024







# Historic Preservation