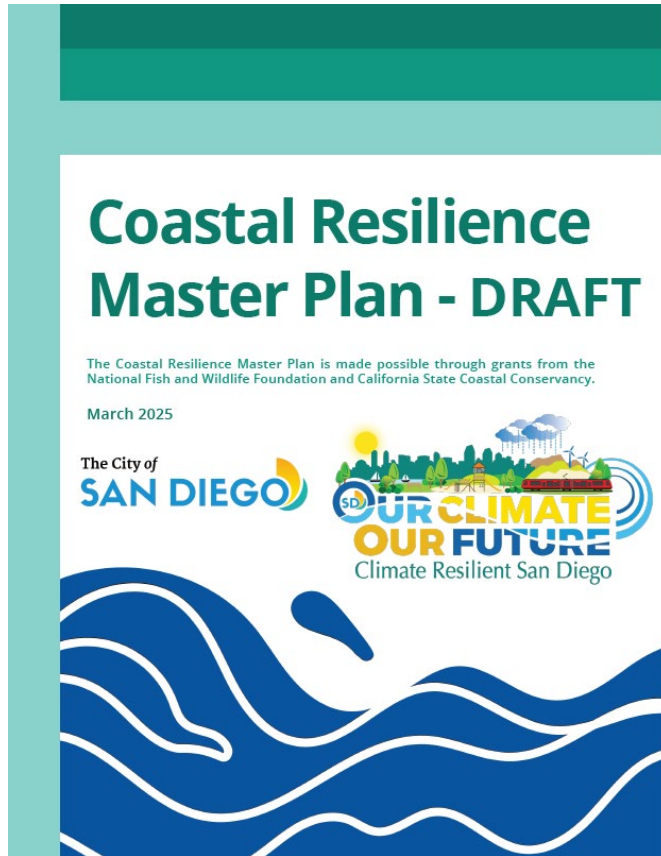


Coastal Resilience Master Plan

City Planning Department
April 2025



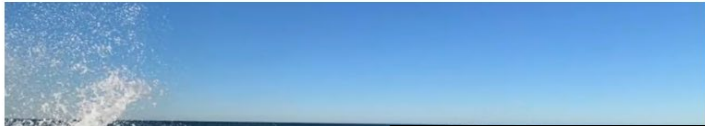
Coastal Resilience Master Plan



- Identifies potential nature-based solution for locations along San Diego's coast to improve the resilience of our communities to sea level rise while also protecting habitat, and supporting recreation opportunities
- Concept level design for six locations
- California Environmental Quality Act (CEQA) environmental analysis

Why the Coastal Resilience Master Plan?

King Tides engulf Mission Bay marsh, flood parts of San Diego



City crews work to secure area near Sunset Cliffs



Photo by: City of San Diego

The City of San Diego told 10News crews have begun working to remove and replace the guardrail, shifting the walking path and putting in fencing to keep people away from the unstable cliff.

Flooding rolls in with high winds and surf at La Jolla Shores



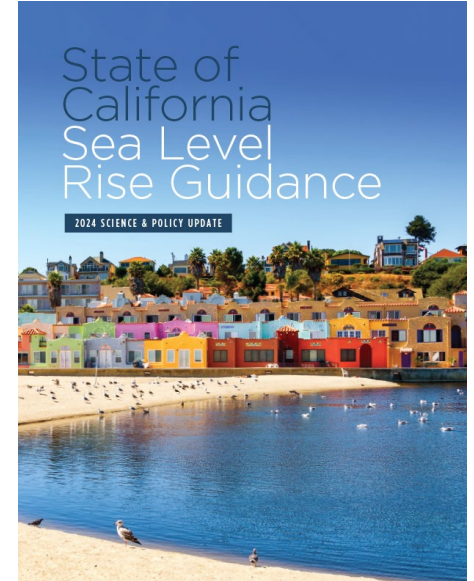
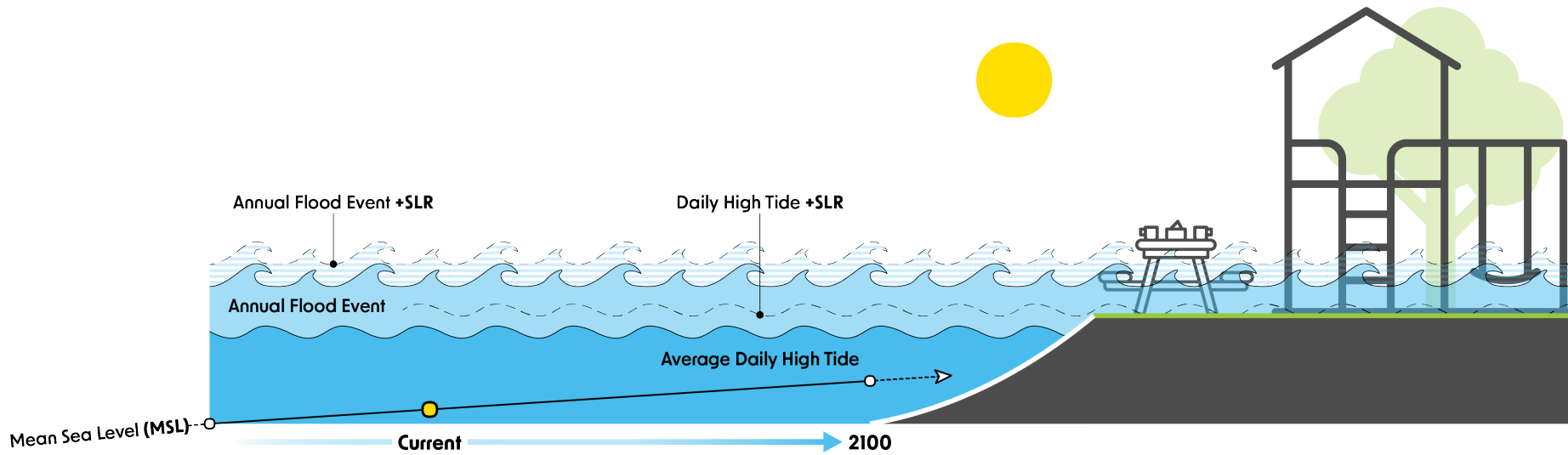
High surf floods Mission Beach boardwalk



High surf warnings are in effect in San Diego coastal areas until 6 p.m. Friday and a coastal flood advisory is in effect until 6 p.m. Friday.

Author: cbs8.com
Published: 8:10 AM PST January 6, 2023
Updated: 8:28 AM PST January 6, 2023

Sea Level Rise



SLR Scenario	2050 (ft)	2100 (ft)
Intermediate	0.8	3.1
Intermediate-High	1.0	4.9
High	1.2	6.6

Nature-based Solutions

- Prioritized in Climate Resilient SD and Coastal Resilience Master Plan
- Provide multiple benefits to communities beyond risk reduction, such as water quality improvement, recreation opportunities, provision of habitat, and greenhouse gas emissions sequestration
- Preferred approached by community members
- Align with funding opportunities and policy guidance





Planning Overview

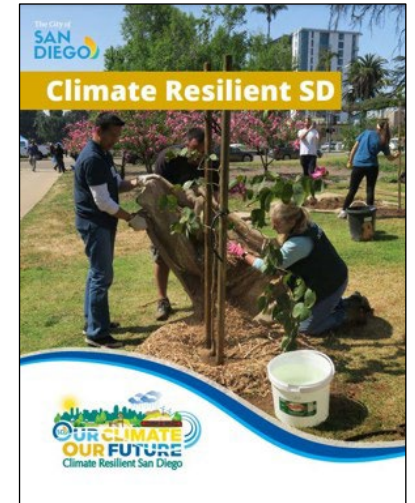
VULNERABILITY ASSESSMENTS

- State Lands SLR Vulnerability Assessment
- SLR Vulnerability Assessment
- Citywide Climate Change Vulnerability Assessment

CLIMATE RESILIENT SAN DIEGO

COASTAL RESILIENCE MASTER PLAN

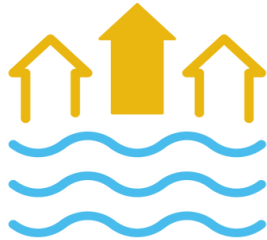
..... Stakeholder and Community Engagement



Project Objectives



Resilient Climate
Protections



Sea Level Rise
Protection



Protect Habitat &
Wildlife



Enhance
Recreation
Opportunities



Protect Historic
& Cultural
Resources



Increase Coastal
Access

Scope and Funding

Phase 1: National Fish & Wildlife Foundation

- ✓ Site Selection
- ✓ Site Feasibility Analysis
- ✓ Nature-based solution concept designs (6)
- ✓ Pilot project 15% design (1)
- ✓ Community engagement
- ✓ Stakeholder Advisory Committee
- ✓ Internal City Working Group
- ✓ Programmatic Environmental Impact Report

Phase 2: State Coastal Conservancy

- ✓ Draft Coastal Resilience Master Plan
 - Tribal coordination
 - Technical studies
 - 15% design (3 sites)
 - Community engagement
 - Stakeholder Advisory Committee
 - Internal City Working Group
 - Supplemental EIR



Site Selection

Prioritization factors:

- City ownership
- Multi-Habitat Planning Area
- Disadvantaged communities
- Sea level rise vulnerability
- Site feasibility



Outreach & Engagement



Community Feedback Themes

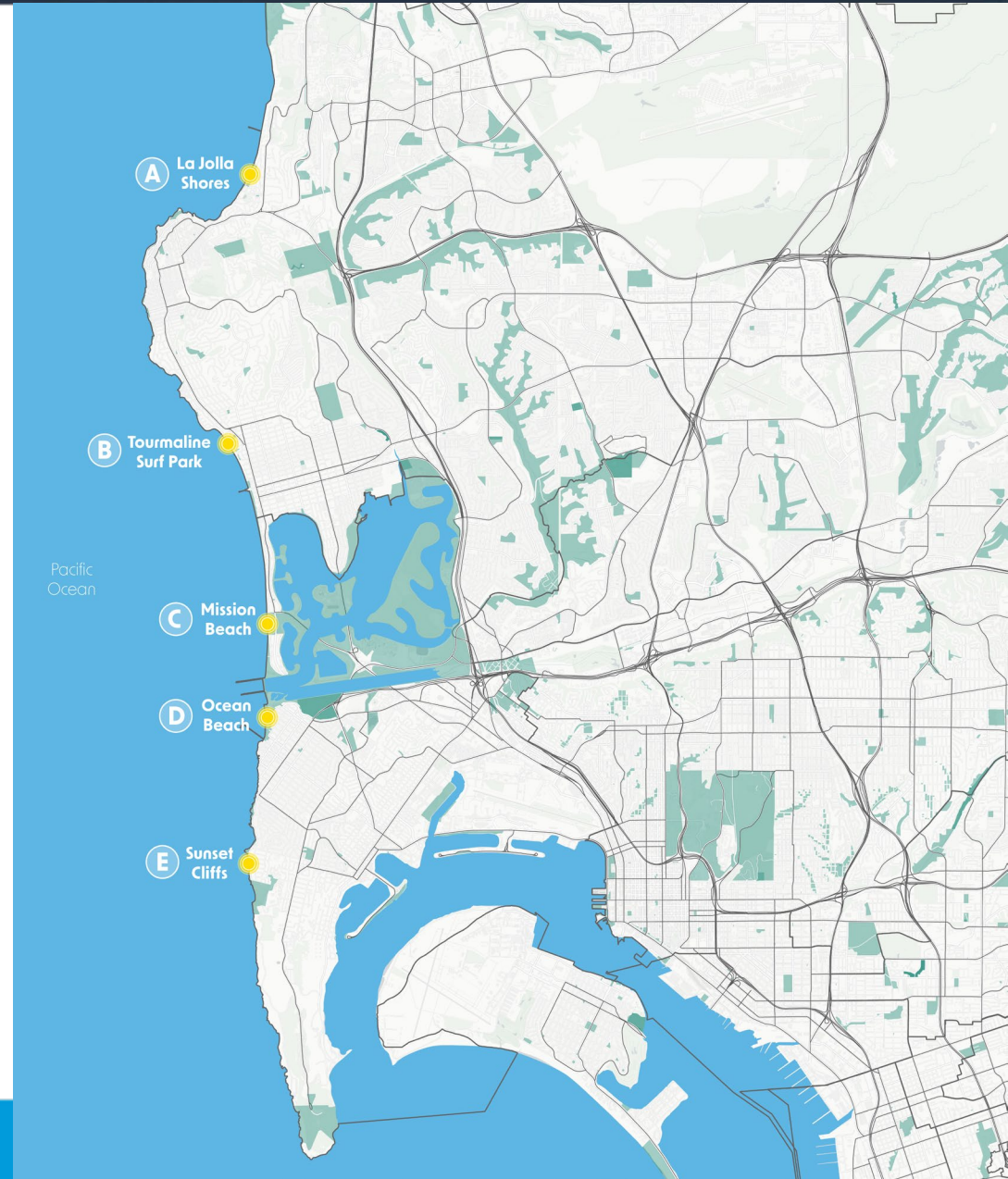
- Safety
- Parking
- Coastal Access
- Recreation
- Education & Art
- Native plantings
- Stormwater Improvements
- Continued engagement



Project Concepts

Concepts aim to:

- Provide resilience
- Create new habitat space
- Enhance mobility opportunities
- Provide a balanced and integrated approach to managing coastal resources

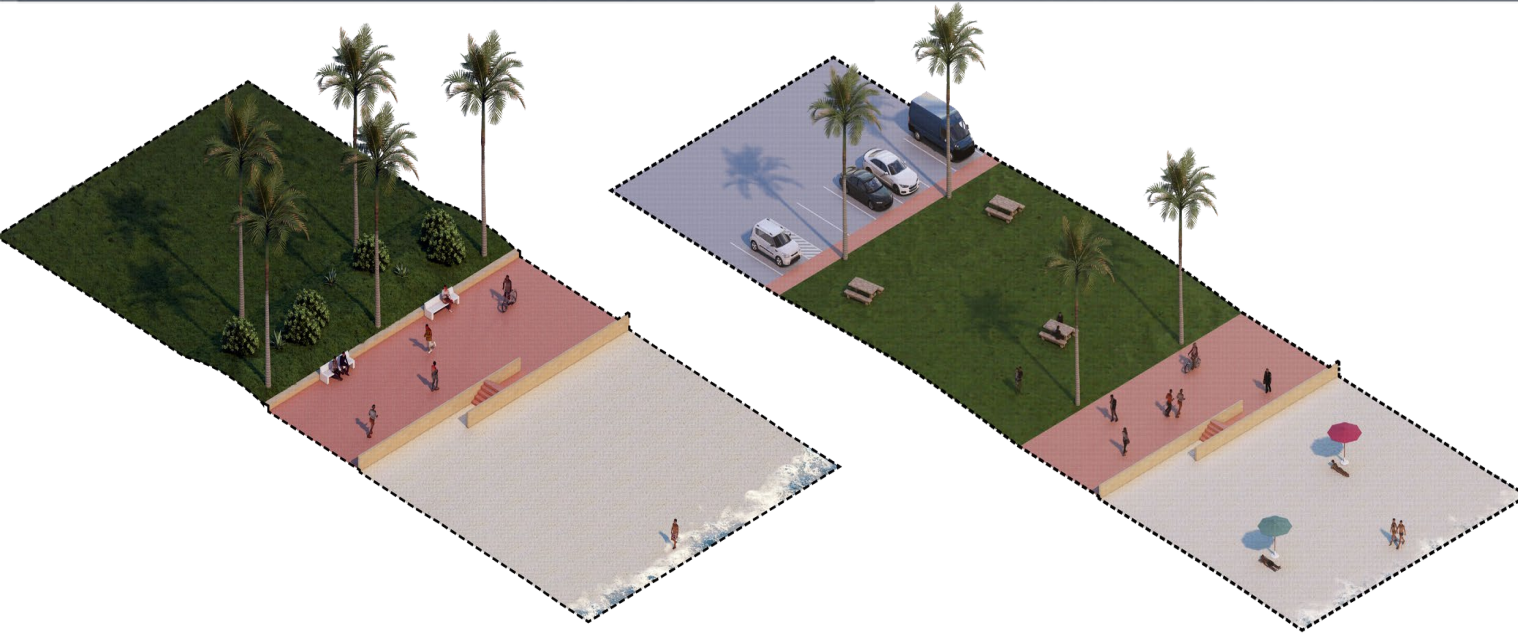




Key Features

- Retains beach space and parking lot configuration
- Seatwall with enhanced seating and viewing amenities
- Earthen dike with usable landscaped features
- Consideration for accessway flood proofing

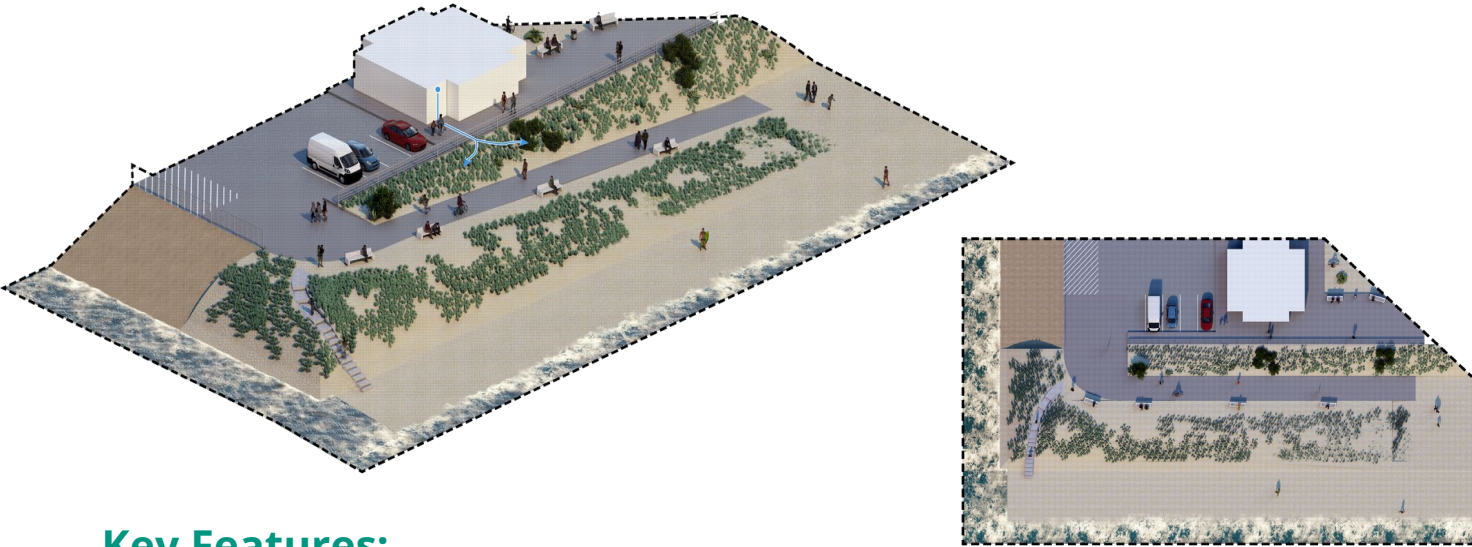




Key Features

- Retains beach space
- Continuous grassy recreational area along the entire length of the park
- Earthen dike with usable landscaped features
- Consideration for accessway flood proofing
- Consideration for opportunities to expand recreational areas

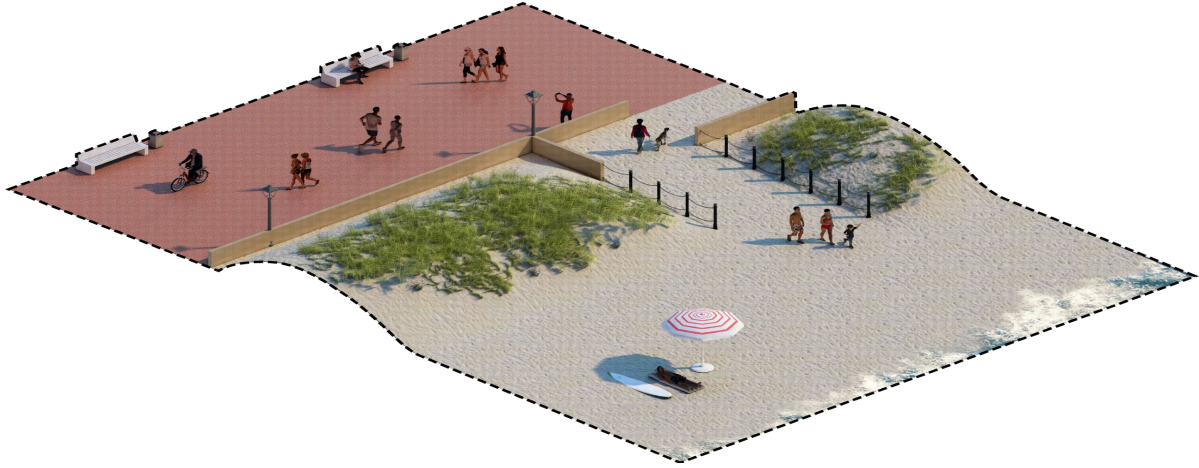




Key Features:

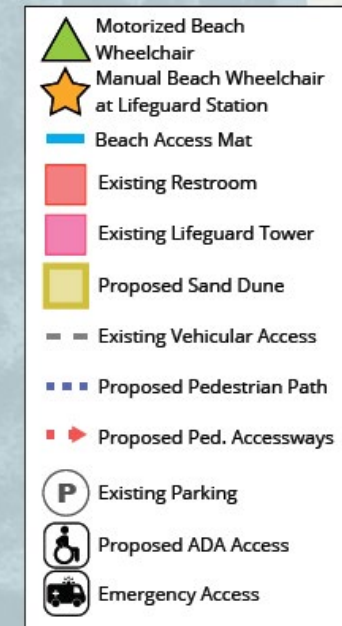
- Vegetated dune leveraging existing material
- Enhance existing seating, access and aesthetics
- Retain ramp and public access
- Access improvements on north end of ramp
- Potential stormwater and public space improvements





Key Features:

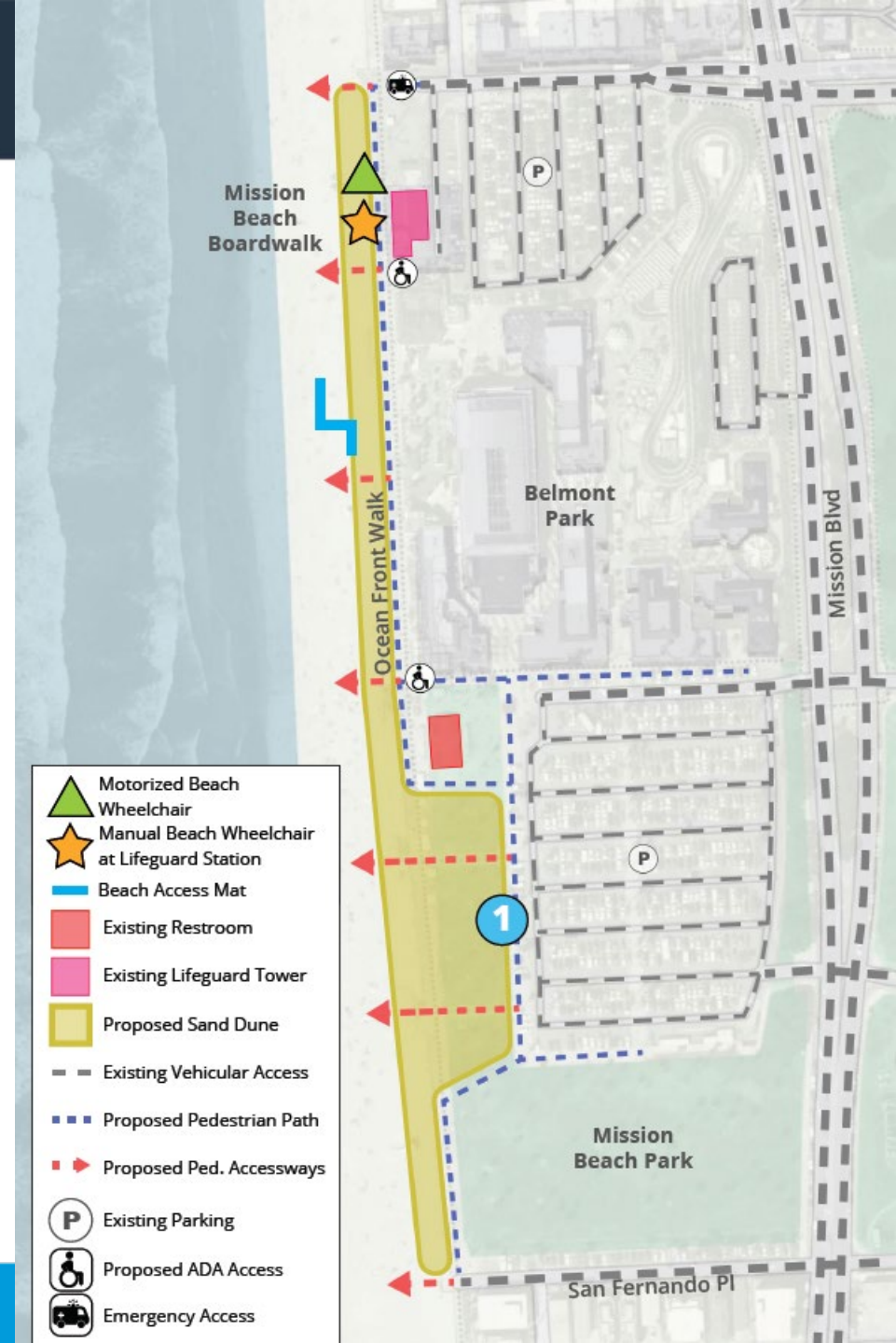
- Vegetated dune with native planting
- Maintain accessways with consideration for accessway flood proofing
- Maintain Ocean Front Walk configuration





Key Features

- Vegetated dune with native planting
- Perched beach for additional beach recreation space
- Maintain accessways with consideration for accessway flood proofing
- Realigned seawall and Ocean Front Walk inland





Key Features:

- Vegetated dune along beachfront
- Multi-use path to connect San Diego River Trail, Dog Beach and Ocean Beach Pier
- Dune restoration near Smiley Lagoon
- Beach accessways through the dune at key points
- No changes to parking



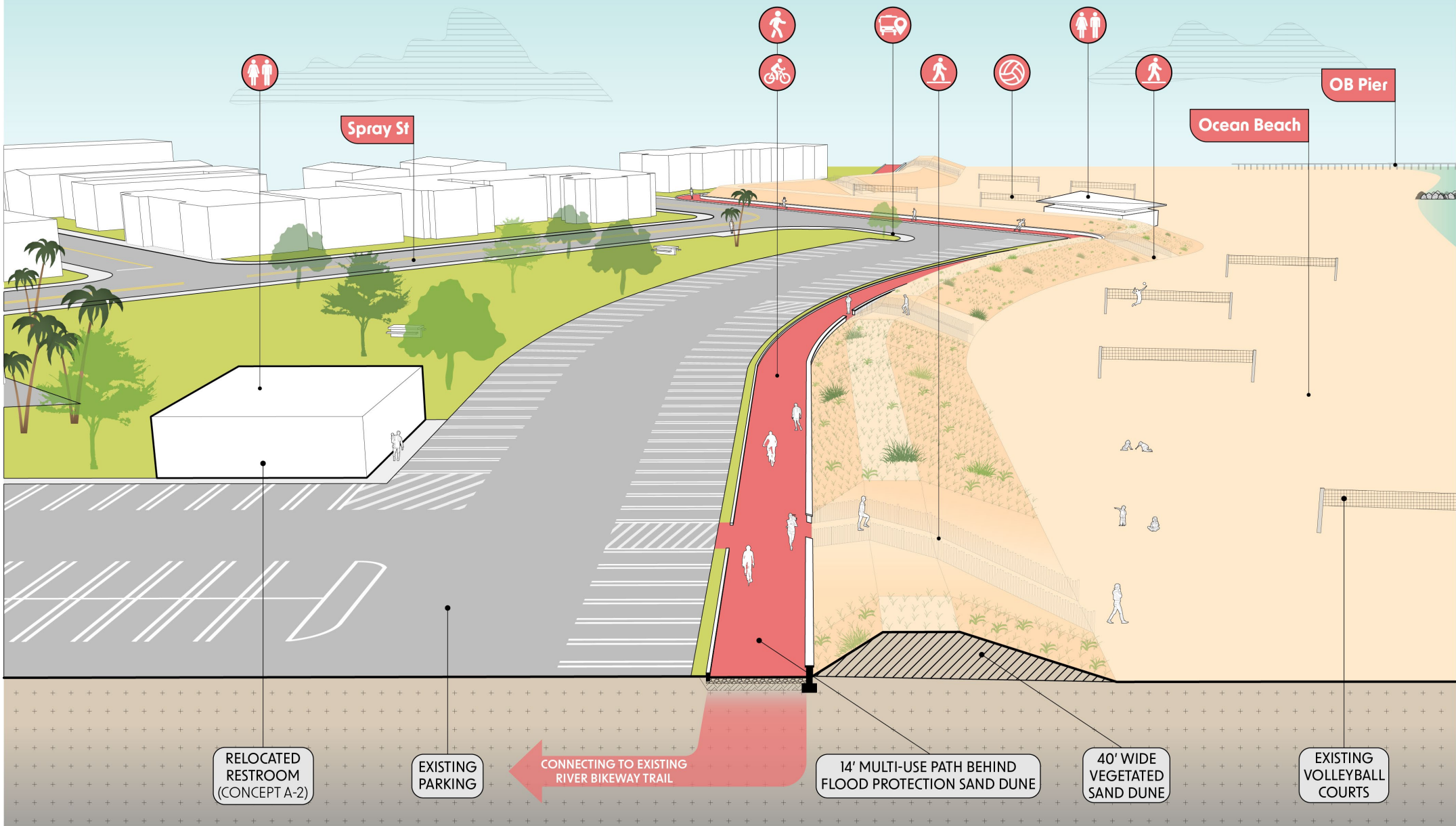


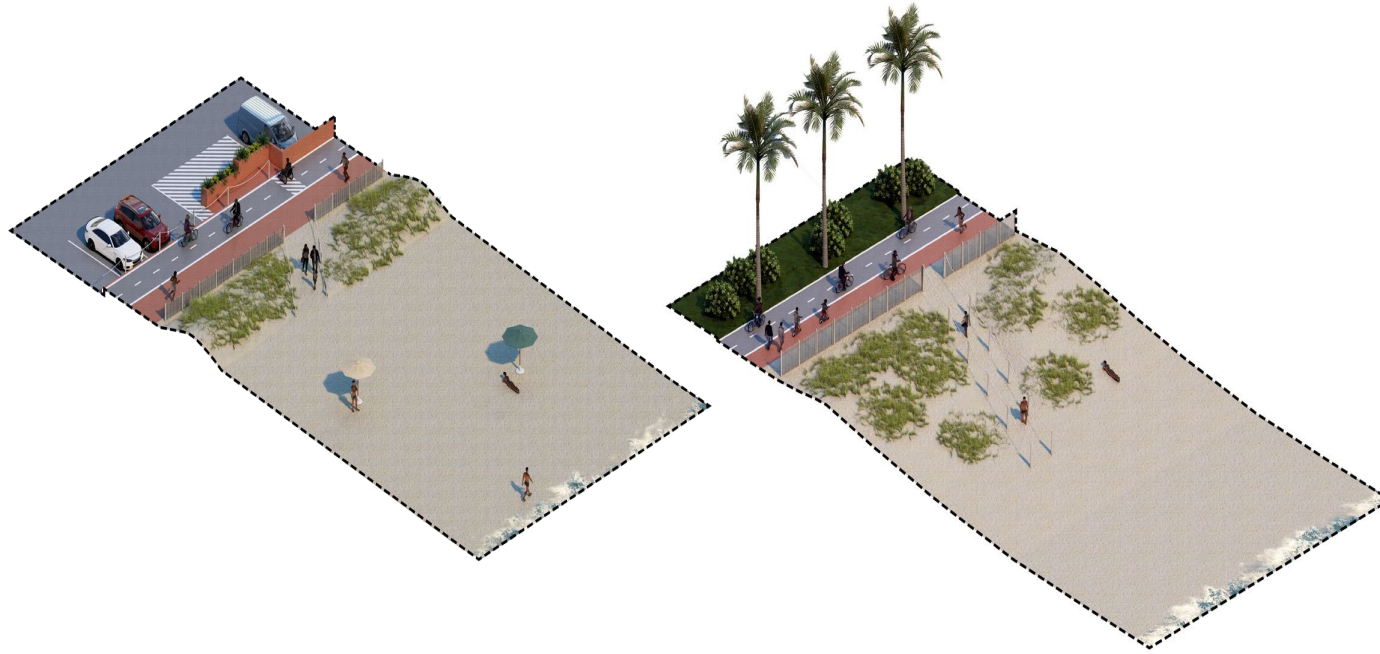
Key Features:

- Vegetated dune along beachfront
- Multi-use path to connect San Diego River Trail, Dog Beach and Ocean Beach Pier
- Dune restoration near Smiley Lagoon
- Beach accessways through the dune at key points
- Bathroom relocation to a centralized inland location
- Potential Public Transit Stop



Ocean Beach Dog Beach - Draft Project Concept





Key Features

- Vegetated dune with native plantings
- Multi-use path to connect San Diego River Trail, Dog Beach and Ocean Beach Pier
- Beach accessways through the dune at key points
- No change to parking

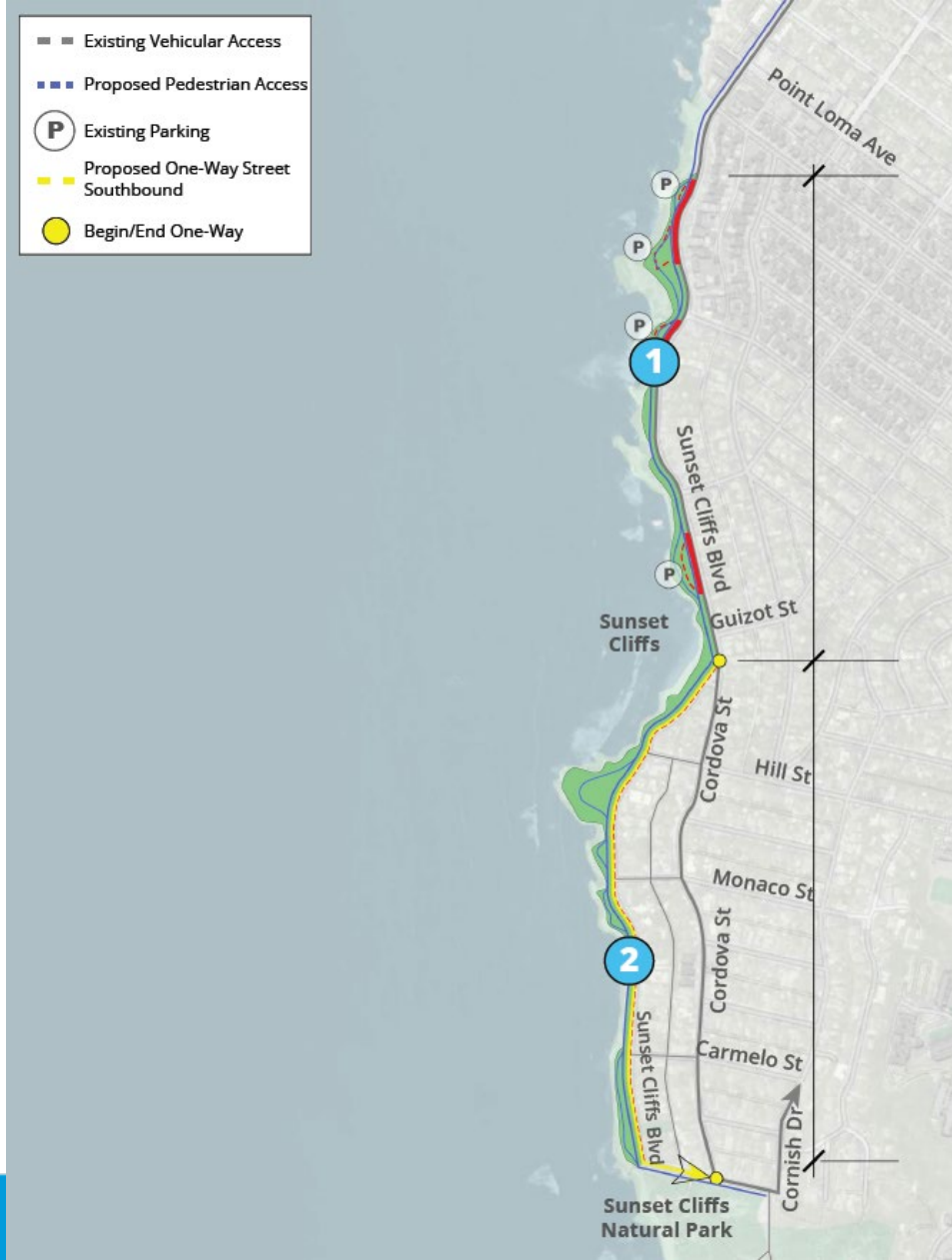




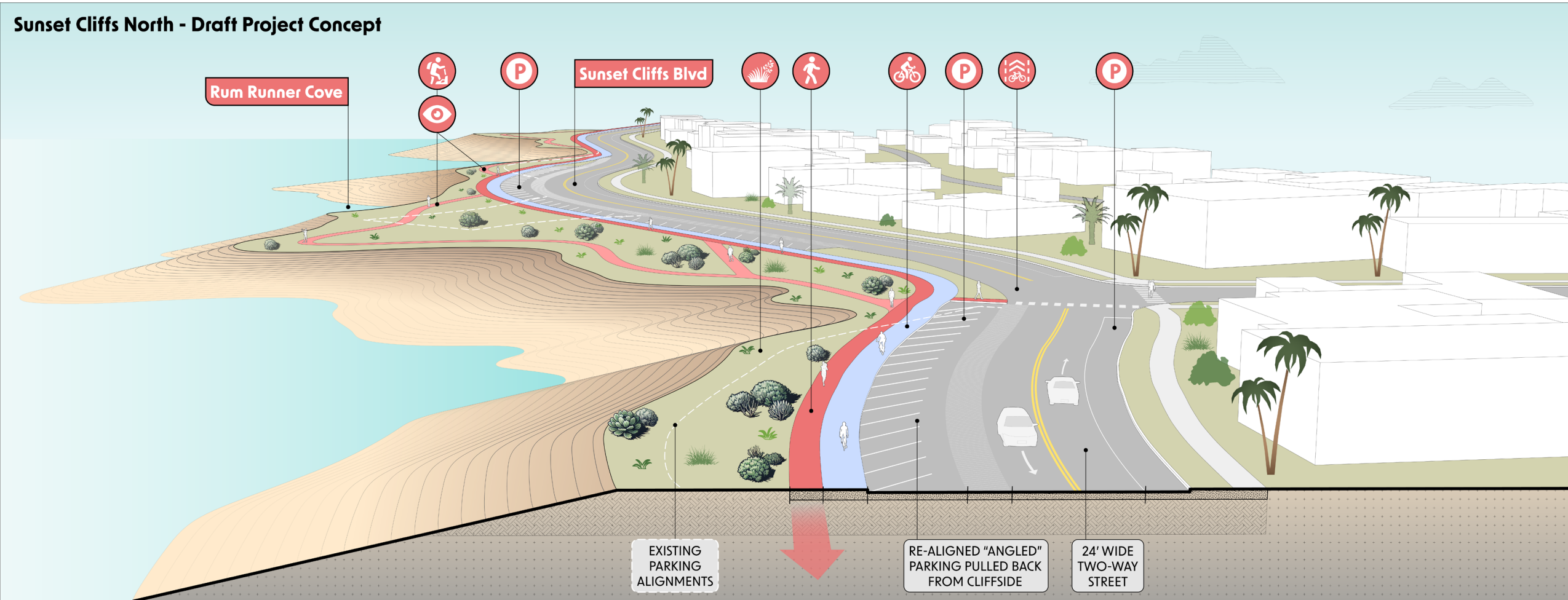
FIGURE 25 - Computer Simulation of Potential Improvements:
Parking redesigned, coastal trail created and park revegetated.

Key Features

- Parking lot realignment
- Trail realignment and/or enhancements
- New multi-use path with reconfigured roadway
- Native plantings



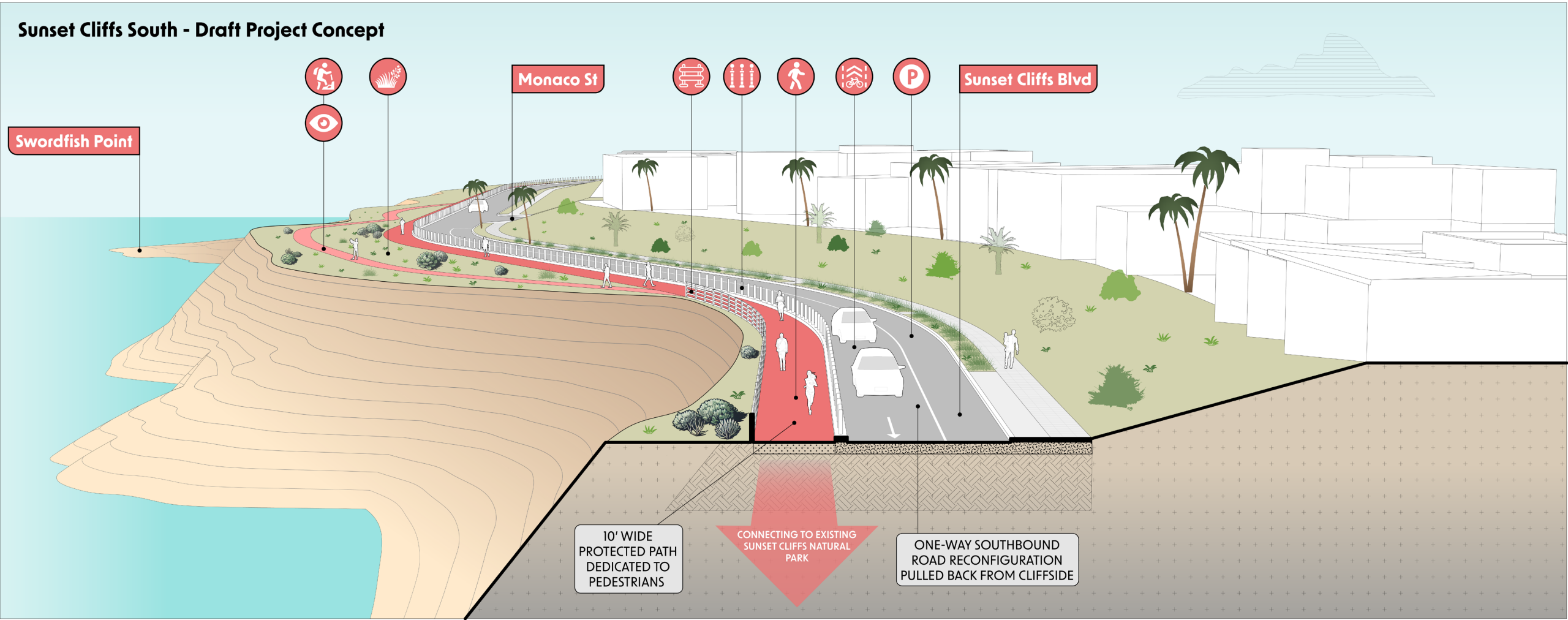
Rum Runner Cove





Sunset Cliffs South

Sunset Cliffs South - Draft Project Concept





Key Updates: Public Review Drafts

Plan

- Additional explanation regarding proposed project concepts for La Jolla Shores and future considerations for project concept development, including trade offs with seawall.
- Added text regarding expanded design options for Pacific Beach – Tourmaline Surf Park.
- Additional clarification regarding next steps and necessary technical studies as project concepts are further developed.
- Clarification regarding sand fencing.
- Clarification around stormwater analysis as project concepts are further developed.
- Clarification of ADA access points.

PEIR

- Additional clarification regarding 100' wetland buffer.
- Revised mitigation measure MM BIO-2 Section D: Structure Clearance.
- Additional clarification regarding Pacific Beach – Tourmaline Surf Park restroom.

Coastal Resilience Master Plan: next steps

Winter 2025

- Draft Plan & PEIR Public Review
- Staff updates Draft Plan and PEIR



Spring 2025

- Public Hearings:
 - Resiliency Advisory Board
 - Environment Committee
 - Council
- **Phase 1 work completed.**



Summer 2025 +

- Phase 2 work of Coastal Resilience Master Plan
 - Initiate CIP
 - Technical studies
 - Community Engagement
 - Tribal coordination

Coastal Resilience Master Plan: next steps

Summer 2025 +

- Phase 2 work of Coastal Resilience Master Plan
 - Initiate CIP
 - Ocean Beach Dog Beach and Ocean Beach Pier
 - Sunset Cliffs
 - Mission Beach
 - Technical studies
 - Community Engagement
 - Tribal coordination

Thank you!



This project is made possible through grants from the National Fish and Wildlife Foundation and California State Coastal Conservancy.

