

FACT SHEET



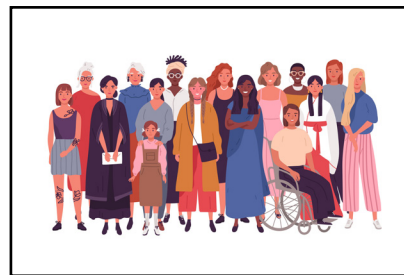
INCLUSIVE PUBLIC ENGAGEMENT GUIDE

The City is creating an inclusive public engagement strategy to promote inclusive public engagement and community participation on plans, programs, and policies, particularly for people who have historically experienced barriers to public participation. The Inclusive Public Engagement Guide will serve as the foundation for City employees to implement a meaningful public engagement program that provides guidelines for how City decisions consider input from community members representative of the population's demographics so that these decisions ultimately improve San Diegans' quality of life.

WHY CREATE AN INCLUSIVE PUBLIC ENGAGEMENT GUIDE ?



To build trust between the City and community members we serve by improving transparency and communication.



To ensure that City decisions are informed by community needs and desires.



To develop inclusive engagement strategies and techniques toolkits accessible for all City departments.



To increase the engagement of underrepresented groups in public participation.

FACT SHEET

WHAT WILL THE GUIDE INCLUDE ?



Principles of inclusive public engagement



Identifying **who is less represented** in current City decision-making



Where and how the City should better engage community members



Considerations for engaging **diverse populations**



GET INVOLVED

Take the Survey

The City would like to understand how you prefer to engage with us to make this Guide the best it can be. Please take a moment to complete the survey



English Survey

<https://tinyurl.com/bd2bja7p>



Encuesta en Español

<https://tinyurl.com/yxteeedr>