

Parks and Recreation Department

Boston Avenue Linear Park Draft GDP

Parks and Recreation Department Board Presentation
May 15, 2025



Boston Avenue Linear Park Community Outreach

- 05.26.2021: Environmental Health Coalition (EHC) - Clean Air Bright Future Presentation (conducted via zoom).
- 10.23.2021: Estrada Land Planning & EHC Community Outreach and Park design workshop#1 (hosted on site).
- 11.05.2021: Estrada Land Planning & EHC Community Survey workshop #2 (hosted at the Chicano Park kiosk).
- 12.11.2021: Estrada Land Planning & EHC Community workshop #3 (Hosted at La Bodega Lot).

Boston Avenue Linear Park Community Outreach

- 08.21.2021: 11.01.2021: Environmental Health Coalition (EHC) – English and Spanish survey conducted to hear the community’s prioritized park features and amenities.
- 03.04.2023: Boston Avenue groundbreaking with CalTrans.
- 04.13.2023: Estrada Land Planning Presented draft GDP.
- 04.16.2025: Parks and Recreation Dept. presented revised draft GDP to the Barrio Logan Community Planning Group at the Chicano Park Museum and Cultural Center.

Site Analysis



Site Photo A



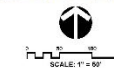
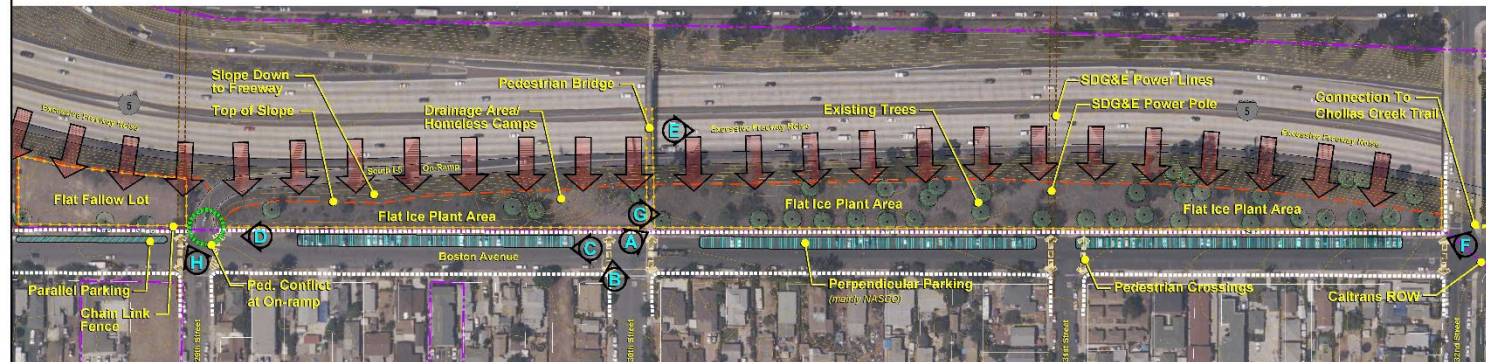
Site Photo B



Site Photo C



Site Photo D



Site Photo E



Site Photo F



Site Photo G



Site Photo H

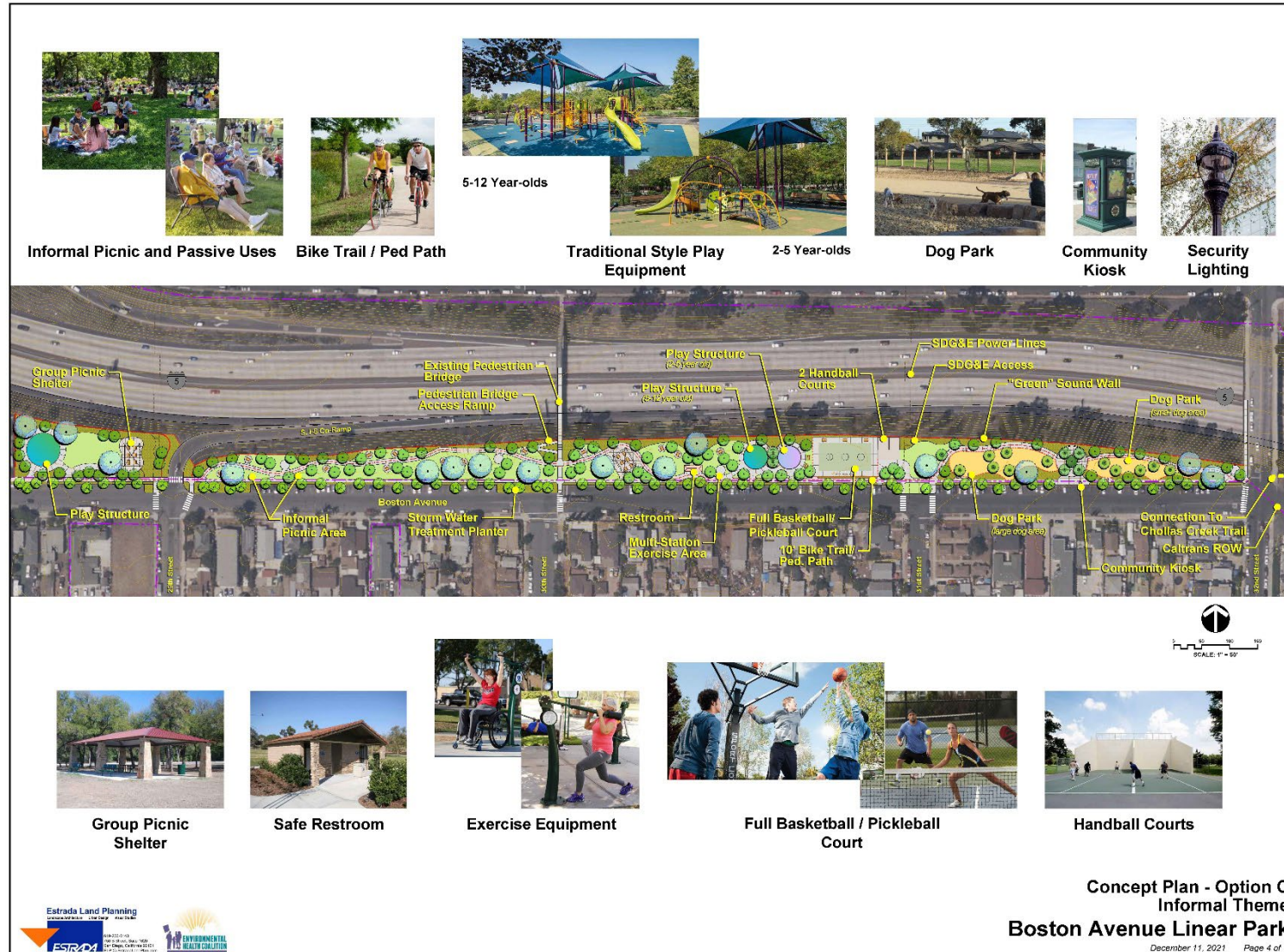
Option a



Option b



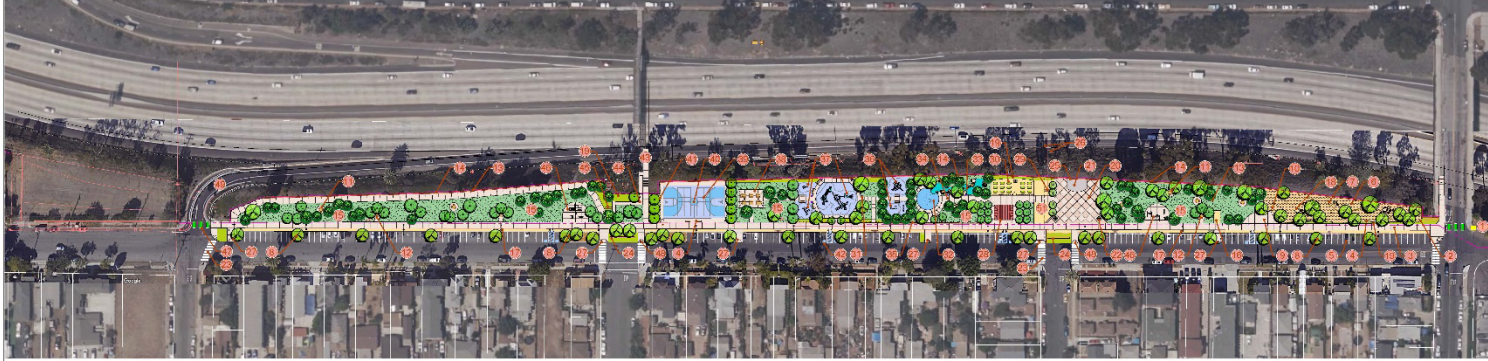
Option c



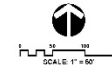
Draft GDP

BOSTON AVENUE LINEAR PARK LABEL NUMBER DESCRIPTIONS

- | | | |
|---|---|--|
| 1. Future trail connection to Chollas Creek bikeway. | 11. Concrete picnic table on concrete pad. | 21. Community stage flush with plaza. |
| 2. 5 ft high wrought iron fence with pilasters around dog park. | 12. Accessible concrete picnic tables on concrete pad. | 22. Community information kiosks (2). |
| 3. 10 ft wide enhanced concrete multi-use path. | 13. Exist. Caltrans 8 ft high masonry wall with vines. | 23. New crosswalks to be aligned with handicap ramps opposite. |
| 4. Concrete bench typical. | 14. Leave areas in wall to act as canvas for public art. | 24. Park monument signage. |
| 5. Reconfigured perpendicular parking. | 15. Open lawn area. | 25. Enhanced 8 ft high screen behind Community Stage. |
| 6. Decomposed granite off-leash dog park. | 16. DG service vehicle pad. | 26. Existing overhead power lines. |
| 7. Dog play equipment throughout dog park. | 17. Exist. Caltrans double cobra street lights @150' o.c. | 27. Concrete driveway for SDG&E and City maintenance access. |
| 8. New planting areas between parking spaces to function as BMPs. | 18. Accent boulders scattered throughout the park. | 28. All gender restroom building. |
| 9. Enhanced concrete entry for dog park and open lawn area. | 19. native/drought tolerant shrub and ground cover area. | 29. Existing power pole to remain. |
| 10. Two-gate trap entry for dog park. | 20. Scored and colored concrete Community Plaza. | 30. Herb garden with raised metal planters and tool shed. |



- | | |
|--|--|
| 31. Pedestrian scale light standards. | 41. 8 ft high black chain-link fence around a basketball court area. |
| 32. Splash pad water play area. | 42. Typical disabled parking stall. |
| 33. Concrete, sand and rock kids water play creek area. | 43. Existing pedestrian bridge to remain over I-5. Repair unsightly fence. |
| 34. 10 ft wide enhanced concrete promenade. | 44. New disabled ramp to access pedestrian bridge. |
| 35. 4 ft high wrought iron safety fence with concrete pilasters. | 45. Existing utility pole to be removed. |
| 36. 2 to 5-year-olds play equipment on rubberized safety surface. | 46. Adult and senior exercise equipment on concrete pad. |
| 37. 5 to 12-year-olds play equipment on rubberized safety surface. | 47. Multi-use path crossing at freeway on-ramp. |
| 38. Group picnic shelter with concrete tables. | 48. New pedestrian ramps and associated crosswalks. |
| 39. 2 pickleball courts overlaid on basketball court. | 49. Interstate 5 southbound on-ramp to remain. |
| 40. Full court basketball. | 50. 5 ft wide parkway paved with decomposed granite. |
| | 51. Decomposed granite SDG&E easement. |



April 2023

Draft General Development Plan



Parks & Rec GDP

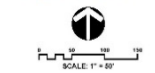
BOSTON AVENUE LINEAR PARK LABEL NUMBER DESCRIPTIONS

1. Future trail connection to Chollas Creek bikeway.
2. 5 ft high wrought iron fence with pilasters around dog park.
3. 10 ft wide enhanced decomposed granite multi-use path.
4. Concrete bench typical.
5. Reconfigured perpendicular parking.
6. Decomposed granite off-leash dog park.
7. Dog play equipment throughout dog park.
8. New planting areas between parking spaces to function as BMPs.
9. Enhanced concrete entry for dog park and open lawn area.
10. Two-gate trap entry for dog park.
11. Concrete picnic table on concrete pad.
12. Accessible concrete picnic tables on concrete pad.
13. Exist. Caltrans 8 ft high masonry wall with vines.
14. Leave areas in wall to act as canvas for public art.
15. Open lawn area.
16. Water play feature underground systems vault
17. Exist. Caltrans double cobra street lights @150' o.c.
18. Accent boulders scattered throughout the park.
19. native/drought tolerant shrub and ground cover area.
20. Scored and colored concrete Community Plaza.
21. Community stage flush with plaza.
22. Community information kiosks (2).
23. New crosswalks to be aligned with handicap ramps opposite.
24. Park monument signage.
25. Enhanced 8 ft high screen behind Community Stage.
26. Existing overhead power lines.
27. Concrete driveway for SDG&E and City maintenance access.
28. All gender restroom building.
29. Existing power pole to remain.
30. Herb garden with raised metal planters and tool shed.



31. Pedestrian scale light standards.
32. Interactive water play area.
33. Concrete, gravel and rock kids water play creek area.
34. 10 ft wide enhanced concrete promenade.
35. 4 ft high wrought iron safety fence with concrete pilasters.
36. 2 to 5-year-olds play equipment on rubberized safety surface.
37. 5 to 12-year-olds play equipment on rubberized safety surface.
38. Group picnic shelter with concrete tables.
39. Designated full pickle-ball court
40. Full court basketball with three (3) pickle-ball court stripping
41. 8 ft high black chain-link fence around a basketball court area.
42. Typical disabled parking stall.
43. Existing pedestrian bridge to remain over I-5. Repair unsightly fence.
44. Existing disabled ramp to access pedestrian bridge.
45. Existing utility pole to be removed.
46. Adult and senior exercise equipment on concrete pad.
47. Multi-use path crossing at freeway on-ramp.
48. New pedestrian ramps and associated crosswalks.
49. Interstate 5 southbound on-ramp to remain.
50. 5 ft wide parkway paved with decomposed granite.
51. Decomposed granite SDG&E easement.
52. Proposed street round-about improvements
53. Removable vehicular bollards





Section 1_West



Section 2_Center



Section 3_East



General Development Plan, Phase I



Parks and Recreation Department

Questions/Comments