

Solid Waste Local Enforcement Agency

Understanding The Waste Hauler Inspection

May 2, 2025



City of San Diego

Solid Waste Local Enforcement Agency (LEA)

Intro

- ❖ Authority – Health, safety, welfare and protect the environment
- ❖ Facilities, operations and equipment > health, related standards
- ❖ Avoid overlap with DOT, OSHA, CHP, APCD
- ❖ Public and private operators > residential, commercial, industrial solid wastes
- ❖ CalRecycle – LEAs annually provide a list of vehicles and types in the jurisdiction
- ❖ Transfer station vs. hauler operation

Outline

- ❖ **Environmental and Health considerations**
- ❖ **Inspection**
 - ❖ Before Inspection
 - ❖ Inspection Day
 - ❖ Violation, Area of concern, In Compliance
- ❖ **Inspection Report, NOV correction**
- ❖ **Questions**

Environmental and Health Considerations

Waste accumulation, leaks and poor maintenance of vehicles

- ❖ Pollution via Storm Drain
- ❖ Health issues from Air Pollution
- ❖ Diseases from Insects/Rodents



Storm water pollution

Waste leaks, engine oil and oily water into storm drains

- ❖ Ocean Pollution
- ❖ Public Health Risks

San Diego has over 75,000 storm drains !!

Air pollution

Sources of dust/particles

- ❖ Uncovered trash, litter

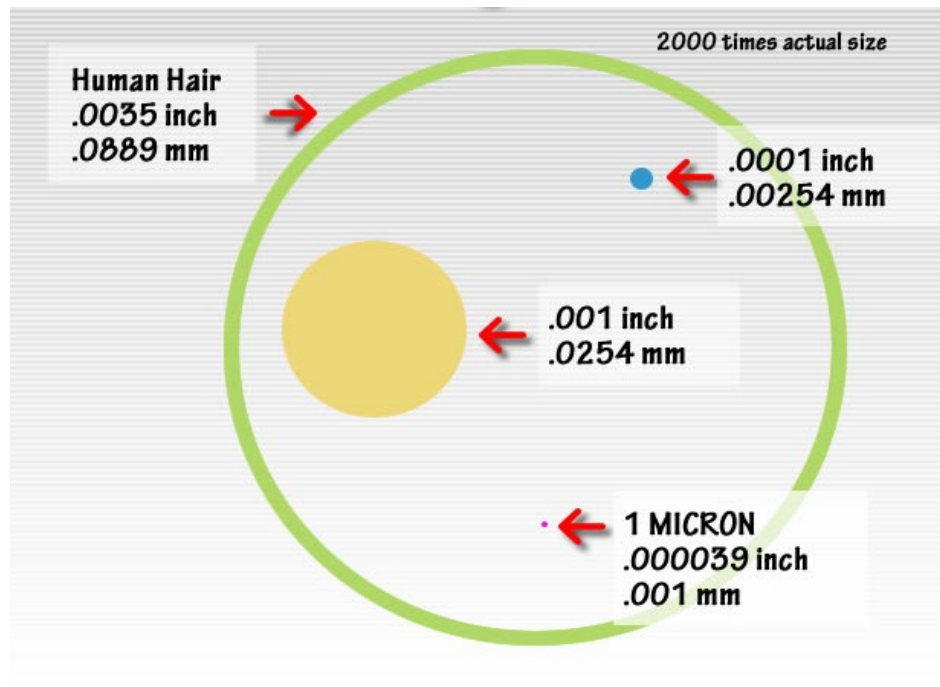
Dust and particles = respiratory problems

- ❖ Particulate matter = small particles (diameter $< 10 \mu$)
- ❖ Particles can bypass the body's natural defenses (nose, throat) and enter the lungs (asthma, bronchitis...)

Particle size

How big is a micron?

- ❖ Red blood cells: Diameter ~ 10 microns
- ❖ Human hair: Diameter between 10 and 100 microns



Particle size description

Diseases from insects/rodents

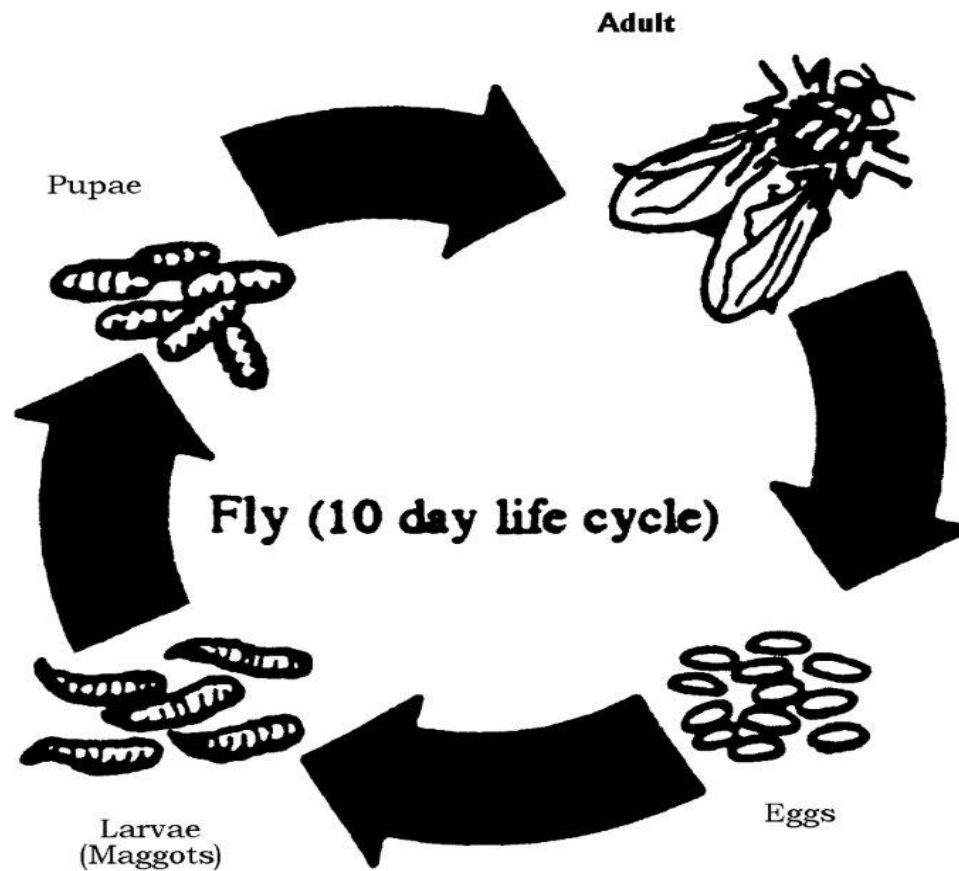
Waste accumulation attracts rodents and insects (flies, mosquitoes...)

❖ Insects and rodents carry and transmit diseases

Directly and indirectly transmitted by rodents

❖ Plague, Lyme disease, Murine Typhus, etc.

Fly life cycle



LEA's authority to inspect

- ❖ Any time
- ❖ Landfill (Miramar, Sycamore)
- ❖ Transfer Station
- ❖ Field observation (driving by)



Before inspection

You will receive a letter from the City requesting information about your vehicles

The City of
SAN DIEGO
Development Services Department
Solid Waste Local Enforcement Agency

Waste Collector Vehicle and Facility Information Form

Owner Name: _____

(DBA) Facility Name: _____

Phone: (____) _____ 24 Hour Emergency Phone: (____) _____

Main Business Address: _____

Satellite Facility Address(es): (yards for bin/vehicle storage, transfer, etc) _____

Mailing Address: _____

Billing Contact: Name: _____ Phone: (____) _____ Email: _____

Billing Address: _____

Inspection Contact: Name: _____ Phone: (____) _____ Email: _____

Circle all types and sources of waste and recyclables collected or transported:

Construction/Demolition	Commercial	Municipal Solid Waste
Industrial	Residential	Street Waste
	Tires**	Food Waste
		Green Waste

Other: _____

*Tire Program Identification (TPID) Number: _____

** all Facilities utilized by vehicles listed on this form:



Before inspection

Waste Collector Vehicle Information Form			
Company Name:			
Total Vehicle Enumeration:			
VEHICLE #	VEHICLE TYPE (front, <u>side</u> or rear loader, Roll Off, etc.)	VEHICLE LICENSE PLATE #	VEHICLE MAKE/MODEL/YEAR

Before inspection

- ❖ Set up an appointment for the inspector to come to the facility
- ❖ Confirmation of inspection by email
- ❖ Plan for a company representative/operator
- ❖ Facilities with many vehicles: plan for 2 operators (at least one mechanic)
- ❖ Vehicles must be available for inspection (have keys)

Inspection day

- ❖ Inspector checks in and meets with the company's representative(s) (operators)
- ❖ Operator escorts and helps find the vehicles
- ❖ The inspector will go over the hand signals we use to instruct the operator
- ❖ If there are 2 Operators: 1 in the truck, 1 with the inspector

NOTE: The operator must be familiar with the truck's controls

Inspection day (cont'd)

- ❖ Operator gets in the vehicle, puts on the seatbelt, turns the ignition

NOTE: seat belt needs to be operational

- ❖ The inspector stands in front of the vehicle, instructing the operator
- ❖ Headlights: High beams, low beams
- ❖ Signals: Right turn, Left turn, Emergency flashers

Any of the above non-functional = Violation

Inspection day (cont'd)

Rear of vehicle:

- ❖ Lights are kept flashing; inspector checks that rear lights are flashing
- ❖ Operator turns off flashing lights; turns on left and right signals again

Any of the above non-functional = Violation

Inspection day (cont'd)

Rear of vehicle (cont'd):

- ❖ Inspector checks that rear left turn and right turn signals are functioning
- ❖ Check turn signals on the side, if any
- ❖ Check side emergency flashers

Any of the above non-functional = Violation

Inspection day (cont'd)

Rear of vehicle (cont'd):

- ❖ Brake lights
- ❖ Back up alarm needs to be audible
- ❖ Running lights, Backup camera lights
- ❖ PTO (Power Take-Off) sometimes called STROBE

Any of the above non-functional = Violation

Running lights – Camera lights



PTO or strobe light



Inspection day (cont'd)

Roll off truck:

Check Tarp:

- ❖ Mechanized deployment

NOTE: The Inspector will ask the operator to deploy the Tarp

- ❖ Manual tarp: needs to be available
- ❖ Tarp: no big holes or tears

Tarp unavailable or with big holes = Violation

Inspection day (cont'd)

Safety equipment:

- ❖ Spill kit
- ❖ Fire Extinguisher (charged)
- ❖ Reflective Triangles or Cones

Any of the above missing = Violation

NOTE: If equipment is N/A but is replaced during inspection, it is still a violation but will be noted on the report as not needing a response

Inspection day (cont'd)

Other things we look for:

- ❖ Company Name and Logo
- ❖ License Plate
- ❖ Truck Number (repaint also needs Numbers)
- ❖ Drip pan and cleanliness
- ❖ Rust, Dirt
- ❖ Premise's general condition

Results

- In Compliance (C)
 - Area of Concern (A)
 - Violation (V)
 - Not Applicable (N/A)
- ❖ Most of our Violations and Areas of Concern fall into these categories:

Leak (Liquid & litter control) (14 CCR 17341)			Safe Condition (14 CCR 17342)		
V	A	C	V	A	C

Leak resistant

Waste leaks and other leaks

VIOLATIONS FOR:

- ❖ Hole(s) in bin/body
- ❖ Drip pan full or overflowing
- ❖ Backdoor not closing
- ❖ Cleanout spilling over
- ❖ Engine/Oil Leak
- ❖ Tarp torn/damaged: > 6" diameter <12" = A or
>12" = NOV

Hole in bin bottom



Holes in bin bottom



Holes in bin bottom



Holes in bin

Violation



Area of Concern



Waste leak at Welding failure



Waste Leak at Welding failure



Waste Leak at Welding failure



Waste leak



Drip pan full



Waste leak



Drip pan overflow



Cleanout leaking



Cleanout leaking



Bin back door not closing properly and hole



Hole in bin



Holes in bin



Tarp on bin



Damaged tarp



Damaged tarp



Engine / oil leak



Engine / oil leak



Engine / oil leak



Oil leak



Hole in bin – Unsafe Bin – Unable to Clean



Safe operating conditions

VIOLATIONS FOR MISSING OR NON WORKING:

- ❖ Headlights, Turn Signals, Running lights
- ❖ Back up camera lights/audible alarm
- ❖ PTO or Strobe

Safe operating conditions

VIOLATIONS FOR

- ❖ Bald tire, Tire damage
- ❖ Frayed/damaged electrical insulation
- ❖ Safety Equipment

Missing light



Tire damage



Tire almost bald



Safety equipment



Fire Extinguisher out of compliance





Operator ID on vehicle

VIOLATIONS FOR:

- ❖ Company Name
- ❖ License Plate

License plate violations



Company name Violation and Area of Concern

- Violation



- Area of Concern



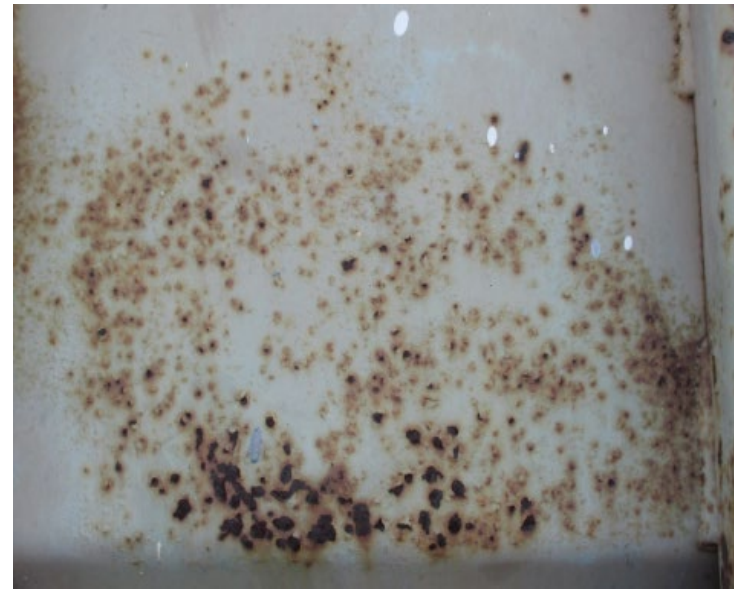
Rust and dirt violations

Evaluated on a percentage basis

10%



25%



>25% and <40% is an Area of Concern

Rust and dirt violations

Evaluated on a percentage basis

40%



70%



>25% and <40% is an Area of Concern

Rust violation



Dirt violation



Dirty



Dirt violation



Premises/yard (City of San Diego)

- ❖ General (14 CCR 17311) – 48 hrs. limit
- ❖ Storage (14 CCR 17312)
 - Store all waste in containers
 - Containers must not leak
- ❖ Operator Responsibility (14 CCR 17314)
 - Containers kept in good condition
- ❖ Container ID (14 CCR 17316)
 - Name and phone # on containers > one cubic yard capacity

Bins in facility yard



Bins leaking





Inspection report



City of San Diego
Solid Waste Local Enforcement Agency
9601 Ridgehaven Ct., Ste 220 MS 1102B
San Diego, CA 92123
Info: (619) 533-3694

Waste Collector Yard and Vehicle Official Inspection Report

Location Name -	Inspection Date	Time in	Time Out	Inspection Time
Company Name -	Received By (Operator)			
Address -	Comments			
Inspector -	Inspector Signature [Signature]	Also Present		

Email Distribution List

The Standards referenced below are considered in compliance unless marked with one of the following: V=Violation; A=Area of Concern; C=Complaint



Inspection report

Part A - Premises

PART A – Premises

Page 1 of

STANDARD*	CRITERIA	V	A	NA
General (14 CCR 17311)	Safe and sanitary storage of solid waste accumulated on the property.			
Solid Waste Storage (14 CCR 17312)	Does not promote propagation, harborage or attraction of vectors.			
Design Requirements (14 CCR 17313)	Proper storage & handling of solid waste to accommodate anticipated waste loading; effective & safe removal & collection.			
Operator Responsibility (14 CCR 17314)	Containers maintained in good condition (ordinary wear and tear excepted).			
Container Identification (14 CCR 17316)	Name and telephone number on containers exceeding one cubic yard capacity.			
Regulation of Operators (14 CCR 17332)	Proof of current Waste Collector Permit as required under City of San Diego Ordinance 0-18497.			
Equipment Parking (14 CCR 17343)	Off-street parking provided for waste collection and transport vehicles.			

Inspection report

[illegible]



Inspection report

Comments: lists violation details

Comments: 3125: (V) Violation: rear brake lights out; 3126: (V) Violation: tarp requires repair.
3132: (V) Violation: tarp requires repair; 3140: (V) Violation: tarp requires repair.
3141: (V) Violation: tarp requires repair.

Correction of violations

- ❖ Response to violations within 30 days of receiving the report
- ❖ May be Repair Order, Pictures
- ❖ Must be clear the violation was corrected
- ❖ May be emailed or mailed



QUESTIONS?

Rodolfo Santiago, Solid Waste Inspector
jsantiagomor@san-diego.gov