

2025 Natural Resource Management Plan Update

Climate Resiliency Advisory Board
June 12, 2025

Multiple Species Conservation Program

1. To **ensure the long-term viability** and sustainability of **native ecosystem function** and natural processes throughout the MHPA.

2. To **protect the existing and restored biological resources** from intense or disturbing activities within and adjacent to the MHPA while **accommodating compatible public recreational uses**.

3. To enhance and restore, where feasible, the full range of native plant associations in strategic locations and functional wildlife connections to adjoining habitat in order to **provide viable wildlife and sensitive species habitat**.

4. To **facilitate monitoring of selected target species, habitats, and linkages** in order to ensure long-term persistence of viable populations of priority plant and animal species and to ensure functional habitats and linkages.

5. To provide for **flexible management** of the preserve that can **adapt to changing circumstances** to achieve the above objectives.

MSCP History

- Endangered Species Act of 1973
 - Prohibits “take” of threatened/endangered species
 - “harass, harm, pursue, hunt, shoot, wound, kill, trap, capture, or collect, or to attempt to engage in any such conduct” (16 U.S.C. 1532(19))
 - Case law prohibited “take” of listed species habitat
 - Palila v. Hawaii Dep't of Land & Natural Resources (1981)
- Section 10(a) – Habitat Conservation Plans
 - 1982 ESA Amendment
 - When “take” is likely to result from an “otherwise lawful activity”
 - Incidental Take Permit issued by U.S. Fish and Wildlife
 - Requires long-term maintenance and management

MSCP History

- MSCP in San Diego
 - 43 species listed as ‘threatened’ or ‘endangered’ under federal Endangered Species Act in San Diego County
 - California gnatcatcher listed in 1993
 - City of San Diego’s failing sewer system
 - EPA sued under Clean Water Act for untreated sewage in 1989
 - Repairs require take of gnatcatcher habitat
 - US Fish and Wildlife Service required mitigation for growth inducing impacts of improved water treatment
 - Strong private development pressure
 - Development in gnatcatcher habitat vulnerable to lawsuits by environmental activists
 - Developers shifted to support MSCP idea

MSCP History

- Final Multiple Species Conservation Program Plan – August 1998
 - Regional planning document
 - 12 jurisdictions in southwest San Diego County
 - Individual subarea plans required for incidental take permit
 - Sets plan-wide conservation strategy and goals
 - Core biological areas and habitat linkages

MSCP History

Development WITHOUT a Regional HCP

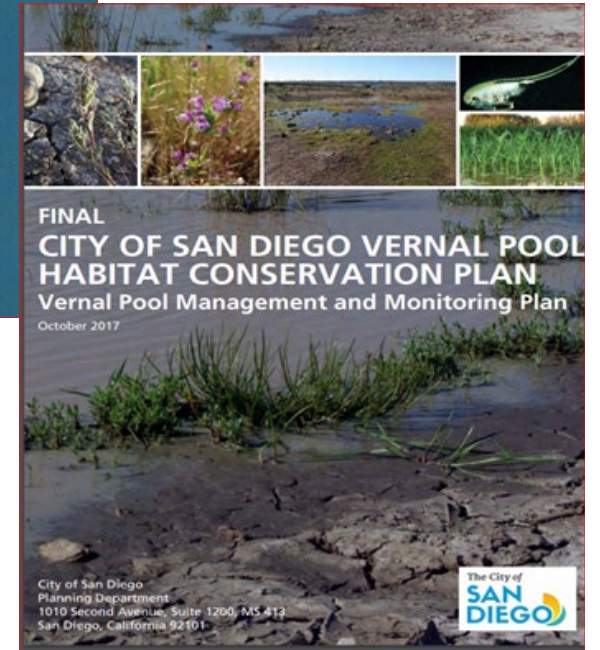
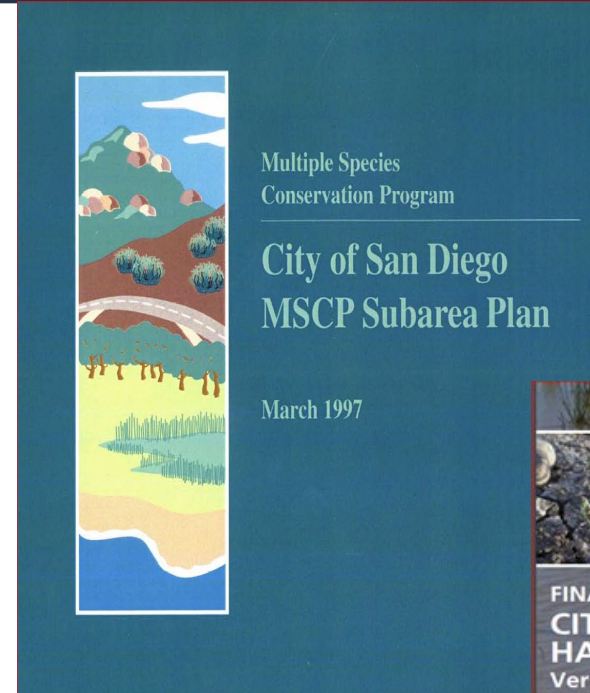
- Incidental take permit issued from USFWS
- Each project requires federal, state and local permits
- Piecemeal mitigation
- Case-by-case project review

Development WITH a Regional HCP


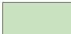




- Incidental take permit issued with City development permits
Third Party Beneficiary Status
- Each project requires local permits
- Regional, connected preserve
- Known regulations

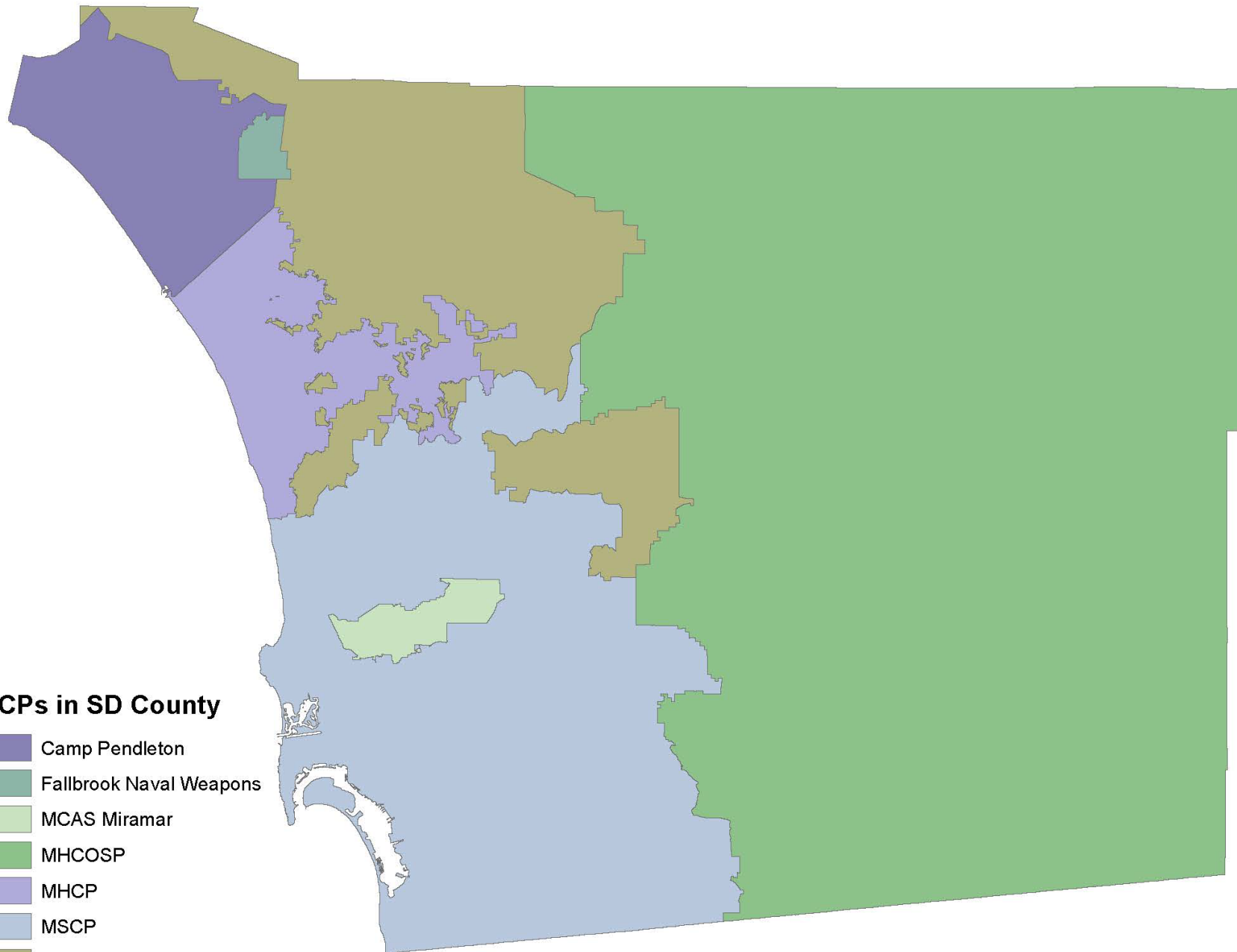
MSCP History

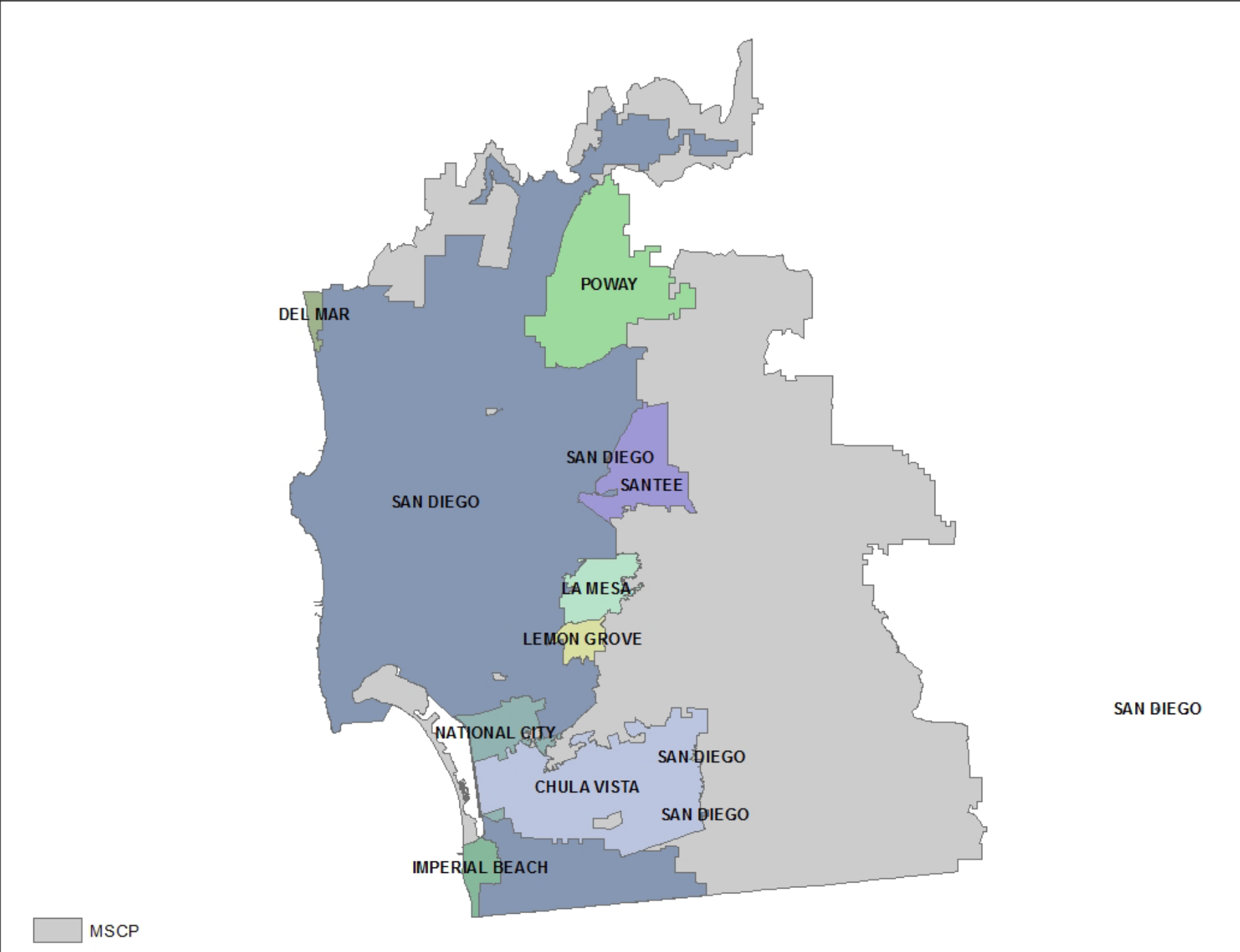
- Multi-Habitat Planning Area
- Approx. 57,000 acres of the City 206K ac municipal & Cornerstone
- MSCP Final Preserve =90% of MHPA,
or 52,727 acres by the year 2047
- Permit Valid: 1997-2047
 - MSCP-50 years
 - VPHCP- 29 years
- Covers 92 Species
 - 51 Plants
 - 41 Animals

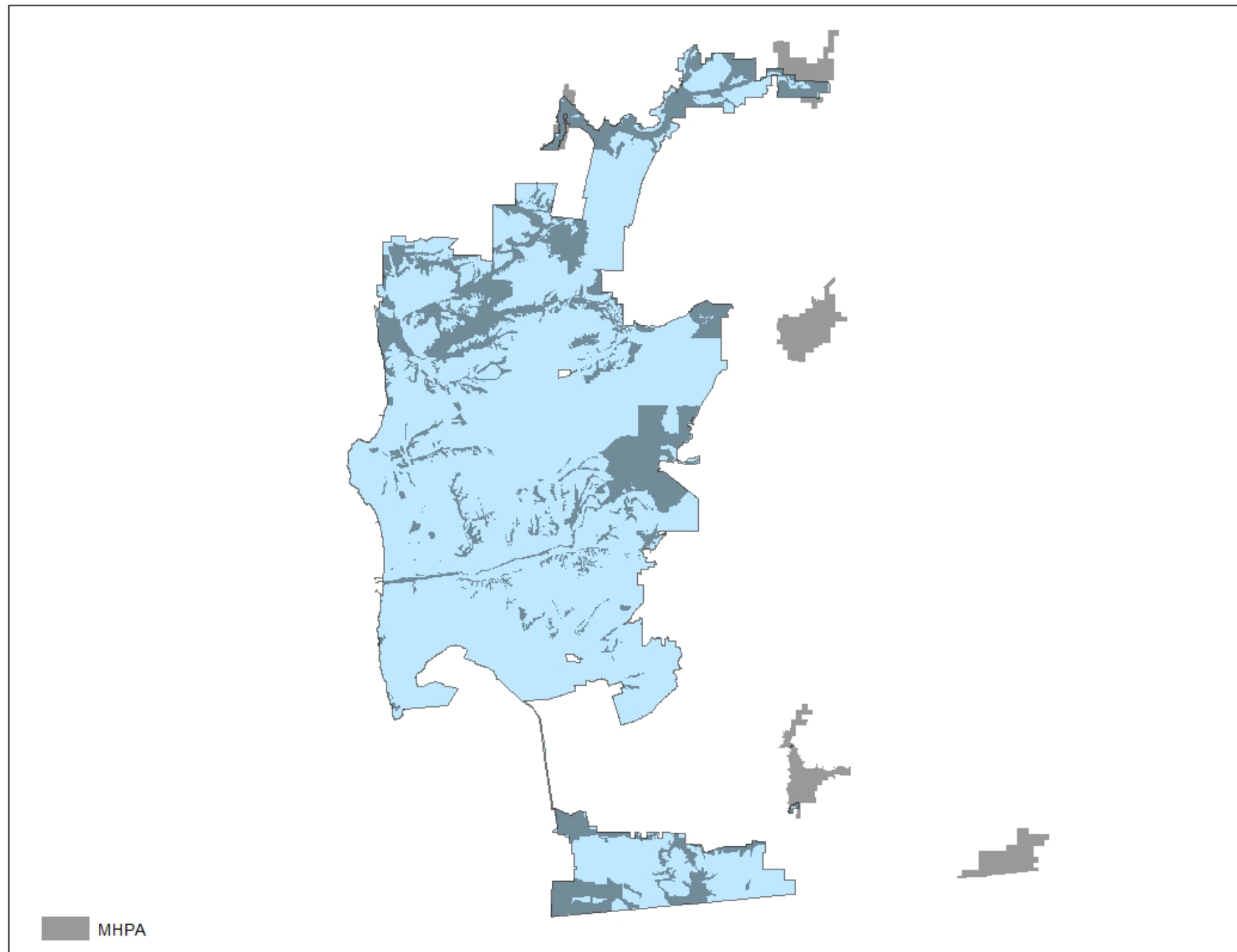


HCPs in SD County

-  Camp Pendleton
-  Fallbrook Naval Weapons
-  MCAS Miramar
-  MHCOSP
-  MHCP
-  MSCP
-  MSCP - No. County Subarea Plan

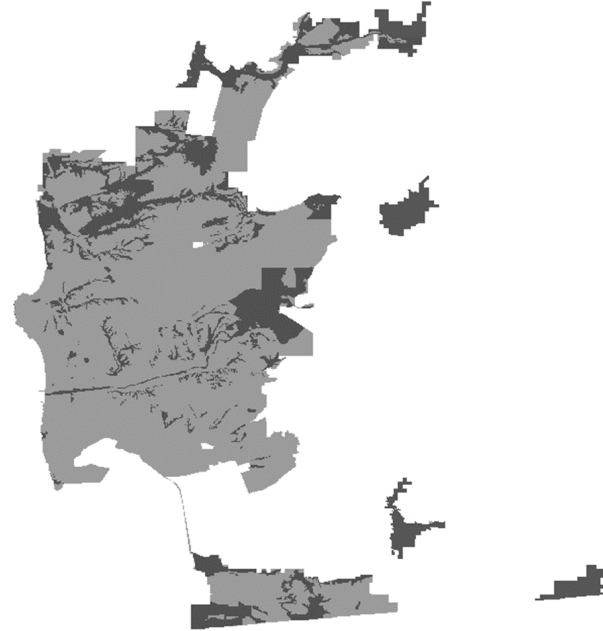






Preserve System

- 51,000 acres
- 27,000 acres open to the public
- 85 rare/threatened/endangered species
- 178 trailheads
- 225 trail miles



Similar size to some of your favorite National Parks:

- Bryce Canyon, Utah: 35,835 acres
- Carlsbad Caverns, New Mexico: 46,766 acres
- Haleakala, Hawaii: 33,264 acres
- Mesa Verde, Colorado: 52,485 acres

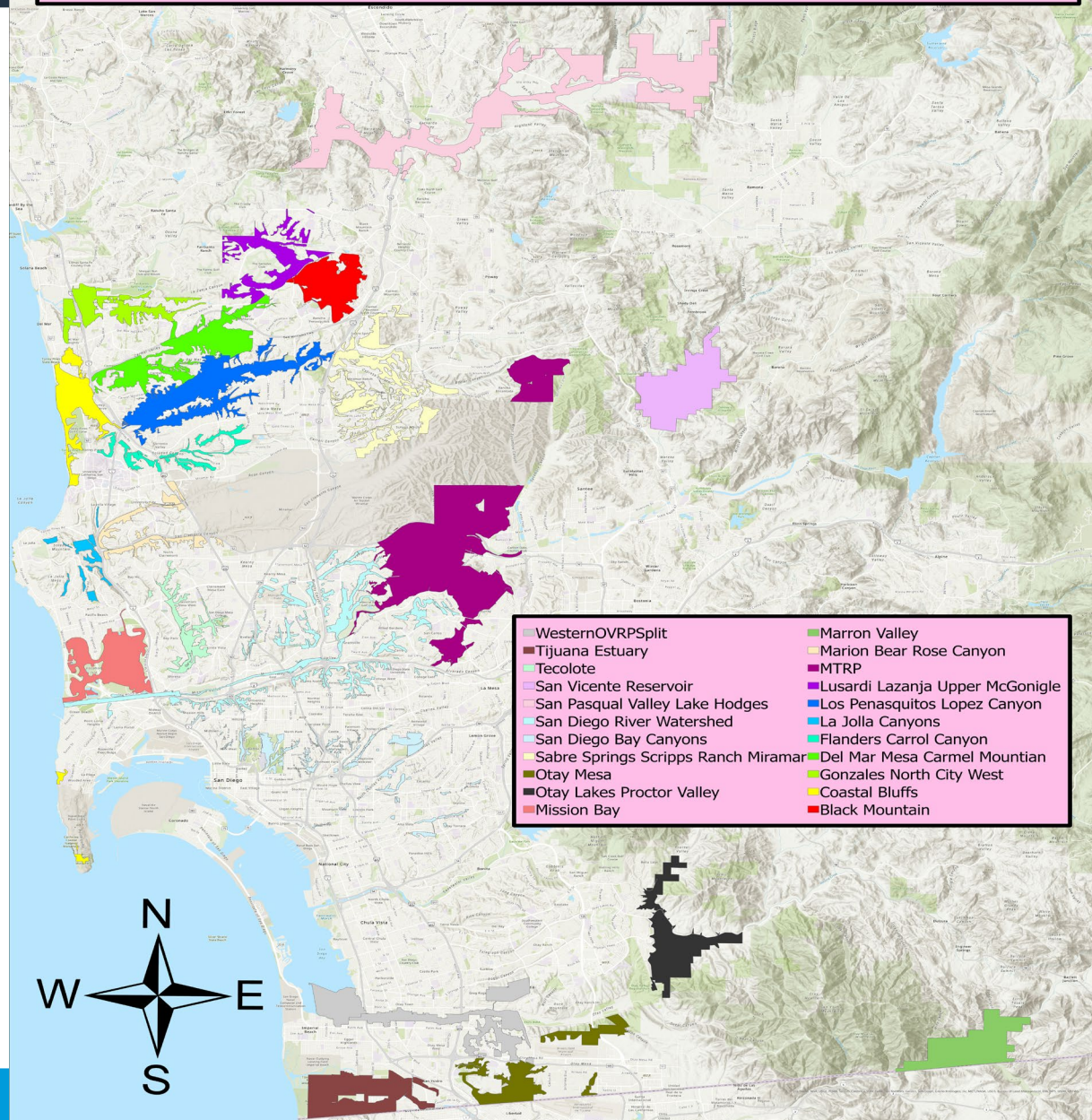




Current NRMP Priority List (Existing and Planned)

NRMP	Acres	Sensitive Species	Status	Comments	Completion Date	Years Since Last NRMP Adopted	> 10 Yrs Old
Mission Bay	4600	Nuttall's acmispon, Salt marsh birdsbeak, Least tern	Completed	Reso 275666. Adopted on May 7, 1990	5/7/1990	0.0	Yes
Marian Bear		CAGN, LBV		Reso 283344. Adopted Jan 31, 1994	1/31/1994	3.7	Yes
Los Penasquitos	3418	CAGN, SD Thornmint, Willowy monardella	Completed	Reso 290948. Adopted on Nov. 10, 1998	11/10/1998	4.8	Yes
FSDRIP	46		Completed	Reso 298839. Adopted on Feb 2, 2004	2/2/2004	5.2	Yes
Black Mountain	1531	CAGN, brodiaea, thronmint, var dudleya	Completed	Reso 308919. Adopted Apr 29, 2014	4/29/2014	10.2	No
Carmel Mountain/Del Mar Mesa	1282	CAGN, VPs, short-leaved dudleya, maritime scrub	Completed	Reso 309952. Adopted on Aug 17, 2015	8/17/2015	1.3	No
MTRP	9696	CAGN, LBV, SD thornmint, SD Ambrosia, Monardella, SD goldenstar, Var. dudleya, Vernal Pools	Completed	Reso 312488. Adopted May 22, 2019	5/22/2019	3.8	No
Tecolote	914	CAGN, LBV, Vernal Pools	In process	On hold - waiting on conceptual mitigation plans.	12/31/2026		
Crest Canyon	134	CAGN, Orcutt's spineflower, Coast wallflower, Short-leaved dudleya	In process	Internal revisions to 3rd draft in progress. Internal review expected to begin in early 2023.	12/31/2025		
PHR/Gonzalez/Carmel Valley	1507	CAGN, Orcutt's spineflower, Coast wallflower, Vernal Pools	In process	1st draft 85% complete. Significant revisions needed due to changes in NRMP boundary, etc. On hold due to competing priorities.	12/31/2025		
Western Otay Valley Regional Park	2029	CAGN, LBV, Light-footed Ridgway's Rail, BUOW, SD thornmint, SD ambrosia, Palmer's goldenbush, Var. dudleya, Orcutt's birdsbeak, Otay tarplant, Vernal Pools (approx. 50% of City's vernal pools are in this NRMP area)	In process	Updated bio surveys 2018-19. 1st Draft 75% complete. On hold due to competing priorities.	12/31/2026		
La Zanja/Lusardi	1484	CAGN, BUOW?, SD thronmint, Orcutt's brodiaea, Thread-leaf brodiaea, Var. dudleya, Vernal Pools	On hold (started in 2018 but put on hold due to staff turnover)	Bio surveys outdated. Need to be updated. Need to define NRMP Boundary.			
San Diego River	578	LBV	Oh hold	Need to define NRMP Boundary			
Rose Canyon/Marian Bear	810	CAGN, LBV, Willowy monardella (?), Vernal Pools	Oh hold	Marian Bear is already complete but more than 10 years old - combine update with Rose Canyon?			
San Pasqual/Battle Mountain/Mt Woodson	2457	CAGN, CACW	Oh hold	Need to define NRMP Boundaries. Multiple NRMPs???			
Urban Canyons - All ranks		CAGN, LBV, CACW, Var. dudleya, Vernal Pools	Oh hold	Need to define NRMP Boundaries. Multiple NRMPs???			
Sabre Springs/Carmel Mtn Ranch/Van Dam Peak?	926	CAGN, SD Thornmint, wildlife corridor	Oh hold	Need to define NRMP Boundaries. Multiple NRMPs???			
Scripps/Miramar Ranch	878	CAGN, DM manzanita (?)	Oh hold	Need to define NRMP Boundary			
Tierrasanta	820	CAGN, thornmint (?)	Oh hold	Need to define NRMP Boundary			
Serra Mesa	151	CAGN, VPs, Bloomeria	Oh hold	Need to define NRMP Boundary			
La Jolla/Soledad	240		Oh hold	Need to define NRMP Boundary			

Natural Resource Management Plan Boundaries



Questions ????

Contact RAB Liaison Julia Chase
or
Natural Resource Manager Mark Berninger

Mberninger@SanDiego.gov