

PROJECT BACKGROUND

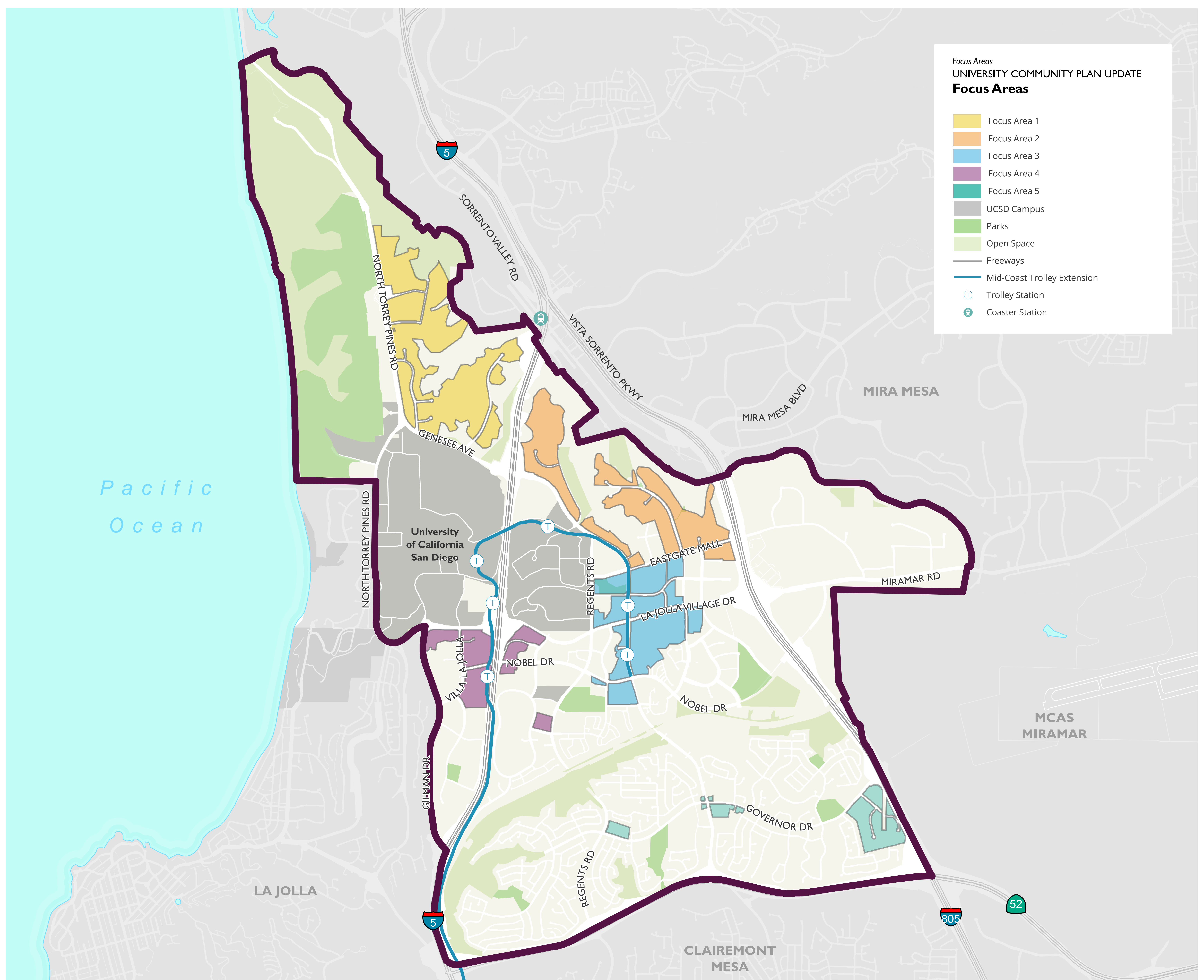
An Introduction to the University Community Plan Update

What is a Community Plan?

University is one of 53 community planning areas in the City of San Diego, each of which is a part of the Land Use Element of the General Plan. Community plans provide more detailed land use designations and site-specific policy recommendations than are practical at the citywide level. Community plan updates work with the General Plan in order to achieve both citywide and community level goals, including guidance of future growth and development. All of the adopted community plans must be consistent with the goals and policies of the General Plan.

Why is the University Community Plan Being Updated?

The University Community Plan was last updated more than 30 years ago, in 1987. Since that time, population and job growth has led University to become one of the San Diego region's primary superregional employment areas. The updated Community Plan will guide the community over the next 30 years, and will consider current conditions, Citywide goals in the Climate Action Plan and the General Plan, and community specific goals to provide direction for the long-term development of the community. The University Community Plan Update will be a collaborative process with ongoing opportunities for public input. During the update process, Planning Department staff will work with the University community and the public to identify and consider important questions, issues, and opportunities.



PROJECT TIMELINE

Project Schedule including Opportunities for Public Input

The Process

The process to develop the University Community Plan Update will be collaborative and include a number of opportunities for public input. The City will form and meet on a regular basis with the University Community Planning Group's Community Plan Update Subcommittee, public workshops will be conducted, and opportunities to share your input online will be available at key milestones in the planning process. The result of this process will be a new draft Community Plan for University. An Environmental Impact Report will also be prepared to assess the potential environmental impacts of implementing the plan, along with necessary mitigation measures.

2018 - 2019	2020	2021	2022	2023
PLAN UPDATE LAUNCH	DEVELOPMENT OF PLAN ALTERNATIVES	ONLINE COMMUNITY ENGAGEMENT & PLAN ALTERNATIVES	CEQA ENVIRONMENTAL ANALYSIS & DRAFT COMMUNITY PLAN	FINAL DRAFT OF PLAN & PUBLIC HEARING PROCESS BEGINS
Open House	Mobility Vision	Element Goals and Policies	Land Use Alternatives	Final Draft Community Plan
Data Collection	Economic Forum	Mobility Networks & Concepts	Planning Commission Workshop	Final Draft Environmental Impact Report (EIR)
Existing Conditions Documentation	Online Engagement	Online Engagement	Draft Community Plan	Public Hearing Process
Existing Conditions Presentation	CPU Subcommittee Meetings *	Community Outreach	Zoning	
Begin Monthly Community Plan Update (CPU) Subcommittee Meetings *	Element Goals and Policies	Virtual Workshops	Draft Environmental Impact Report (EIR)	
Website Launch	Adopted Plan Land Use Buildout Report	CPU Subcommittee Meetings *	CPU Subcommittee Meetings *	
Guiding Principles Development		Land Use and Urban Design Concepts		

 Community engagement activities

* The University Community Plan Update Subcommittee is a subcommittee of the University Community Planning Group, which is the City's recognized citizens' group for the University Community. This subcommittee was created specifically for the Community Plan Update in order to provide feedback to the City regarding the process. This subcommittee meets monthly.

