



UNIVERSITY COMMUNITY PLAN UPDATE SUBCOMMITTEE MEETING

PLANNING DEPARTMENT

MAY 17, 2022

INTRODUCTIONS



Nancy Graham, AICP

Supervising Project Manager

City of San Diego

NHGraham@sandiego.gov



Martin Flores, RLA, ASLA

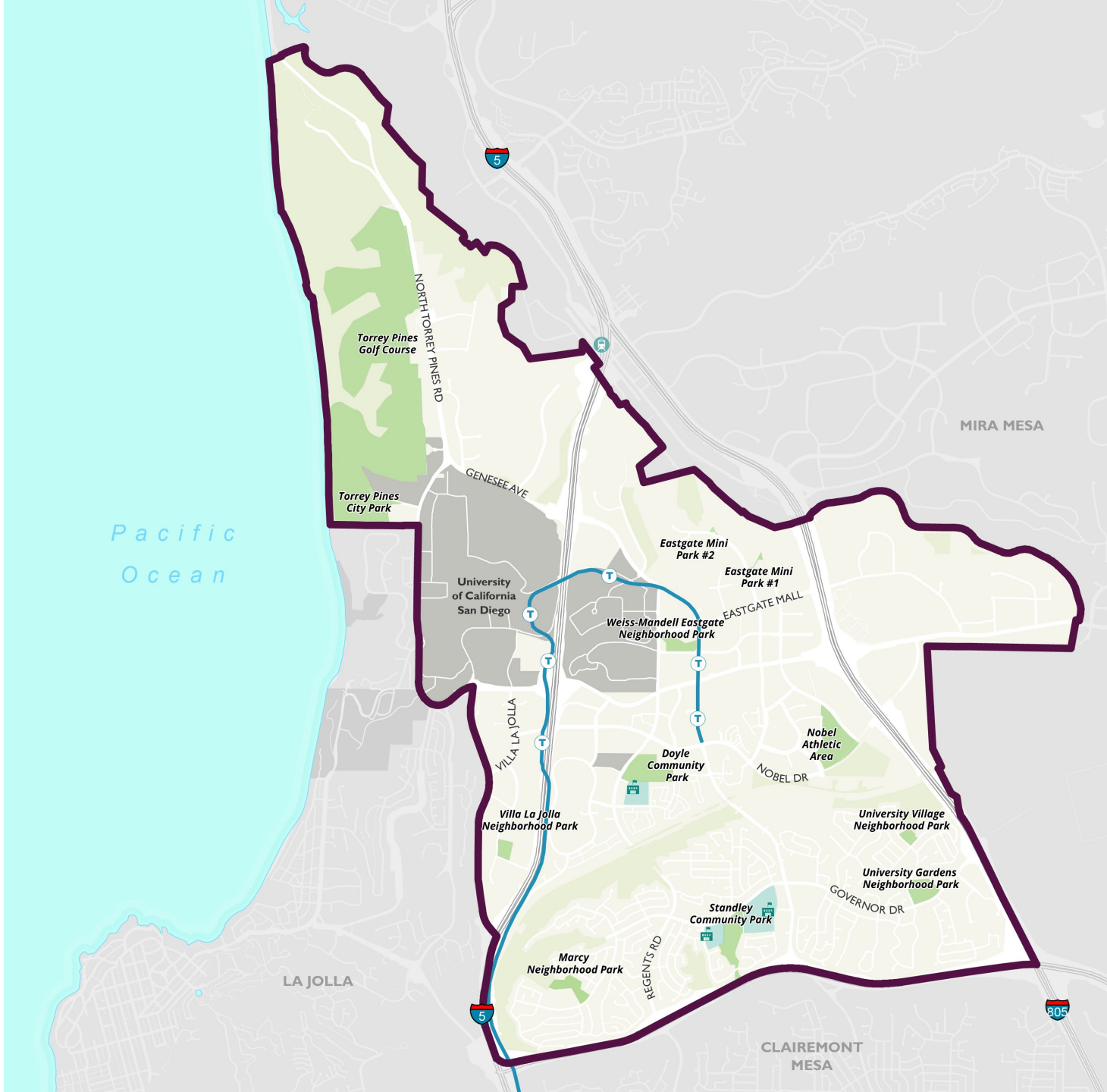
Landscape Architect/Park Designer

City of San Diego

FloresM@sandiego.gov

UNIVERSITY COMMUNITY PARKS

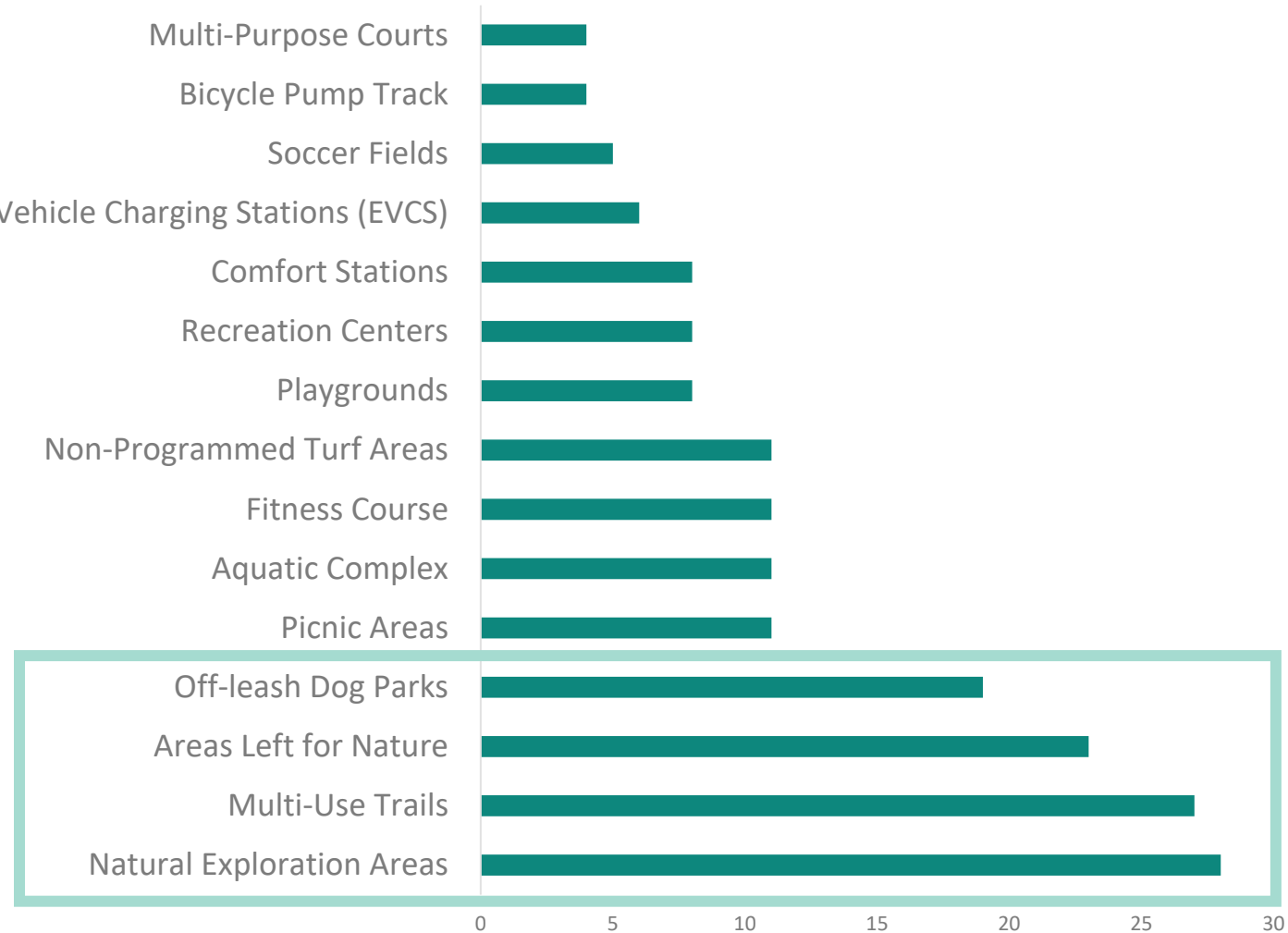
- Joint Use / Play All Day Parks
- Parks



Source: City of San Diego, 2020

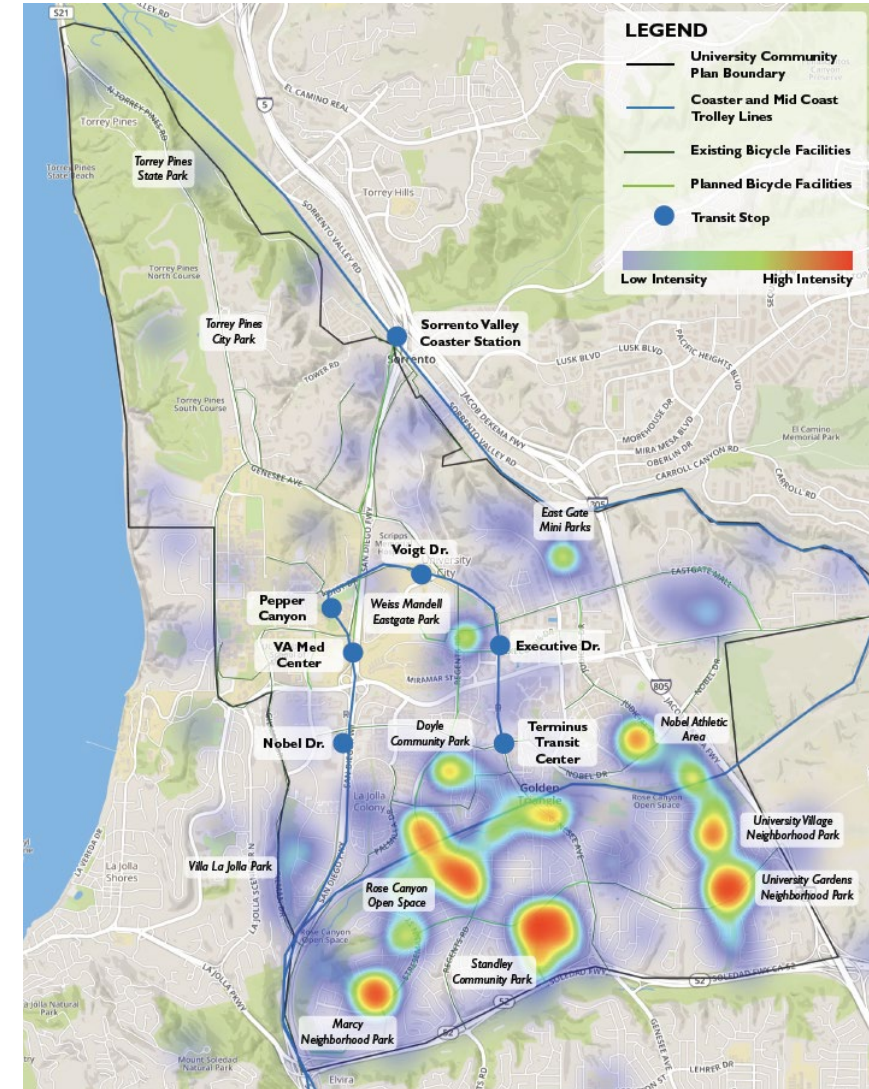
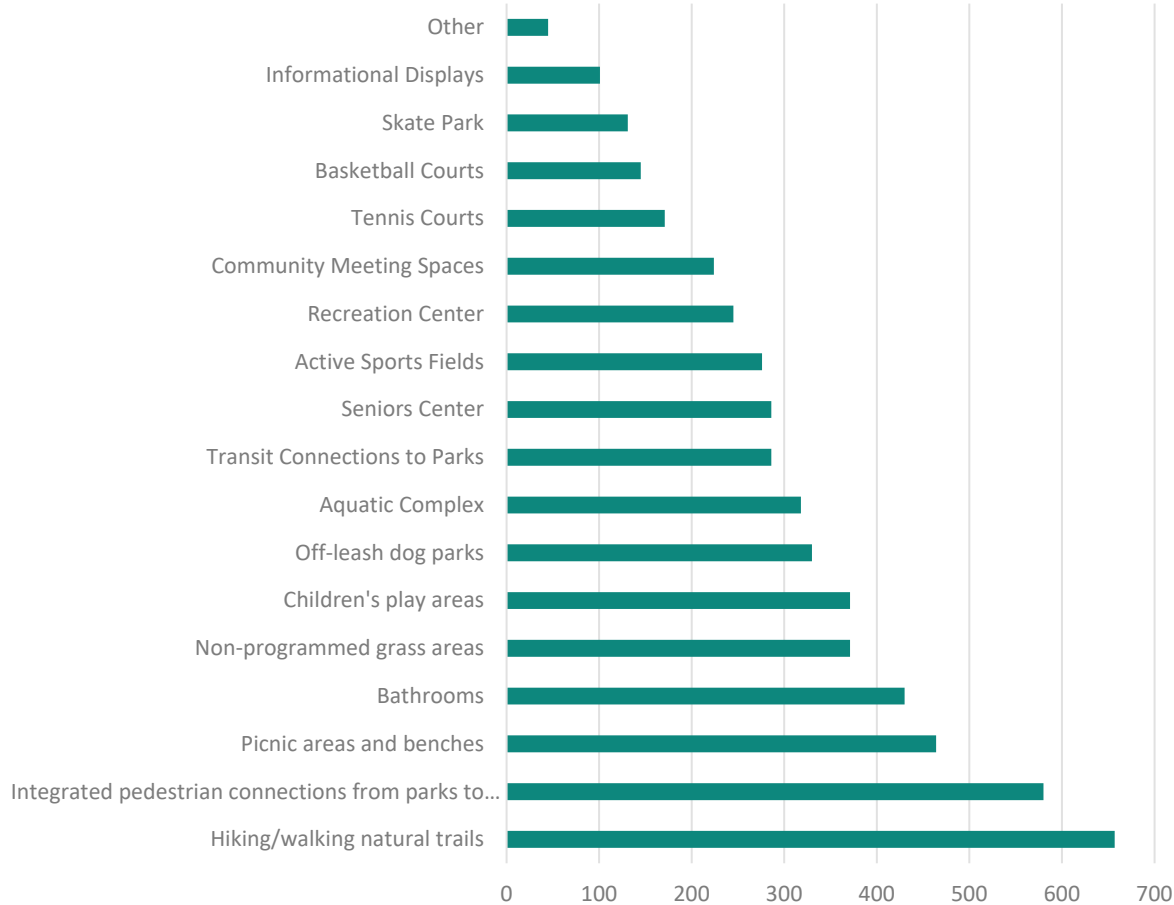
CPU KICKOFF – 2018

What amenities do you want more of in your public park?



COMMUNITY OUTREACH SURVEY – 2019

What types of amenities would enhance existing parks and recreation in the University Community over the next 20 years?



WHAT WE'VE HEARD

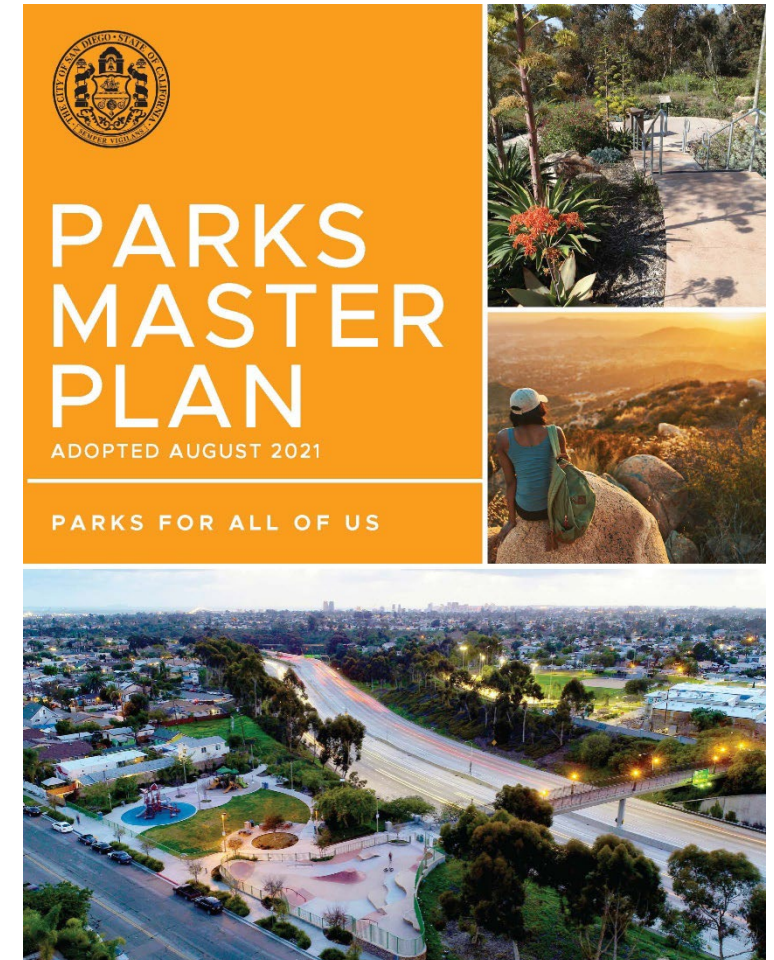
- *Need for park connections*
- *Need for natural areas (areas left for nature)*
- *Need for non-programmed areas*
- *Need for additional park space*
 - *Rose Canyon Overlook Parks*
- *Need for dog parks, play areas, and areas to relax and recreate (picnic areas, benches, etc.)*



PARKS MASTER PLAN OVERVIEW

PARKS MASTER PLAN

- Adopted in Summer 2021
- New paradigm for park planning
- The Parks Master Plan can be found on the Parks and Recreation website
 - <https://www.sandiego.gov/park-and-recreation/general-info/documents>



What? Why?

- **What?** – Long range policy document to guide the development of population-based parks citywide
- **Why?** – An update to the 1956 Parks Master Plan was called for in the 2008 General Plan.



Standard and Goals

- 100 points of recreational value per 1000 people
- 100 acres of new population-based parkland in 10 years
- 10-minute walk & roll to a local recreational opportunity
- 20-minute bike ride to a local recreational opportunity or regional park
- 30-minute transit ride to a regional park, beach, recreation center, or aquatic complex

Population-Based Facility Standards

 **17,000** Square feet of Recreation Center space per
25,000 people


 **1** Aquatic Complex per
50,000 people

HOW DID WE DEVELOP THE PARK STANDARD?

A PARK =  +  + 
Land Recreational Experiences Equity & Access

CURRENT CITY
PARK STANDARD
2.8
ACRES PER 1,000 PEOPLE



 Calculate the recreational value of community planning areas that meet 2.8 acres standard

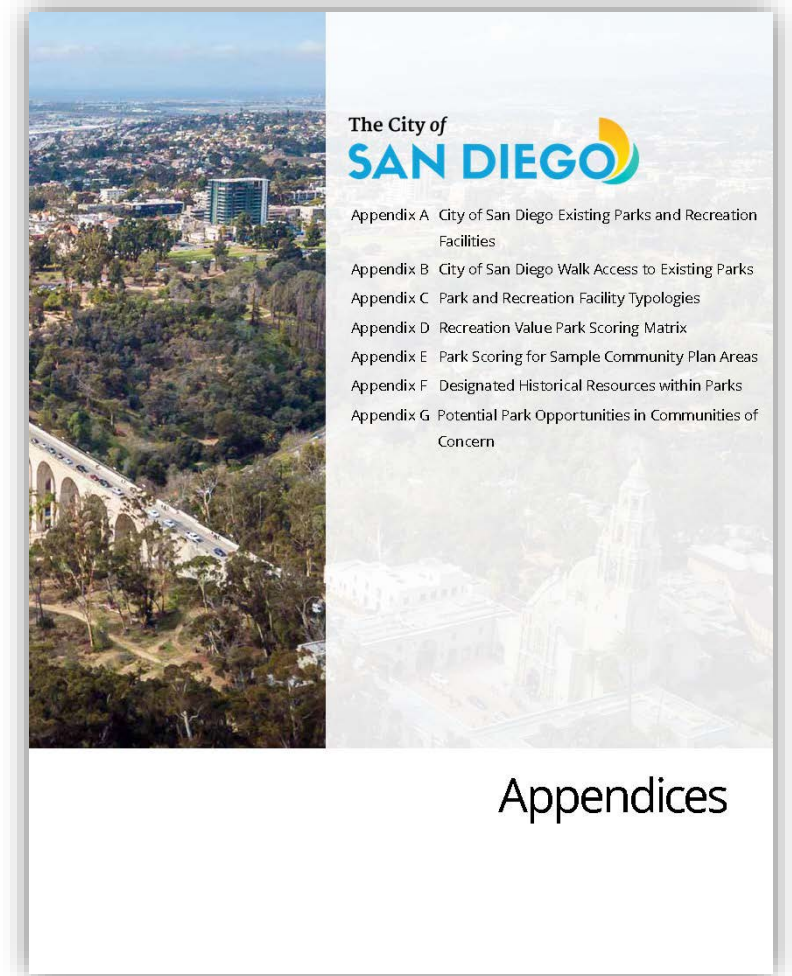
Linda Vista CPA = 75 points per 1,000 people
Carmel Valley CPA = 69 points per 1,000 people
Mission Beach CPA = 190 points per 1,000 people
Navajo CPA = 72 points per 1,000 people

NEW CITY
PARK STANDARD
100
POINTS PER 1,000 PEOPLE



Appendices

- App. A – City of San Diego Existing Parks and Recreation Facilities
- App. B – City of San Diego Walk Access to Existing Parks
- App. C – Parks and Recreation Facility Typology
- **App. D – Recreation Value Park Scoring Matrix**
- App. E – Park Scoring of Sample Community Plan Areas
- App. F – Designated Historical Resources within Parks
- App. G – Potential Park Opportunities in Communities of Concern



Park Typologies

New Typologies

- Trailhead Pocket Park
- Linear Parks



Archetypal kiosk at Trailhead Pocket Park

PARKS AND RECREATION FACILITY TYPOLOGIES

The City's parks system consists of varied park spaces and recreation facilities, as shown in Table 3. The park designations identified are intended as a guide to the types of parks that make up the Citywide parks system, but are not intended to suggest that any particular planning effort be limited to these particular park types, or that any particular effort must include each and every park type. Detailed guidelines for all park and facility types are contained in Appendix C and Table 1 which highlights a sample range of varying park and facility types. These guidelines offer basic tools for establishing minimum development standards and promoting equity in the delivery of recreation. Guidelines should be flexible enough to meet changing recreational priorities and accommodate creative opportunities to expand recreation throughout the parks system while balancing stewardship of historic and cultural park spaces. See pages 23 through 34 for examples of park and recreation facility types.

Planned Parks

Planned parks are based on adopted Community Plans and ongoing park planning initiatives. The City is actively expanding its parks system - focusing on acquiring land for new parks and improving existing parks, especially in areas of the City with the greatest park needs. Additionally, under the Play All Day program launched in 2016, the City is working with its long-time partner, the San Diego Unified School District, to develop over 45 new joint use parks in the next 5 to 10 years.

Table 3: Parks and Recreation Facility Typologies

Park/Facility Type	Purpose
Open Space*	Canyons, mesas, and other natural landforms that protect habitat
Developed Regional Parks	Site of distinctive scenic, natural, historical or cultural features with developed amenities for recreation
Resource-Based Regional Parks*	Areas of habitat and resource protection, with compatible recreation
River Parks*	Areas of habitat and resource protection, with compatible recreation
Resource-Based Shoreline Parks and Beaches*	Areas of habitat and resource protection, with compatible recreation
Major Parks	Parks with specialized recreational facilities that serve larger populations
Community Parks	Parks that serve a community and may include recreation centers, aquatic complexes, multi-purpose fields
Neighborhood Parks	Parks that serve smaller populations and may include recreation centers, aquatic complexes, multi-purpose fields
Mini Parks	Small, highly accessible parks near residential areas with features, such as picnic areas, play areas, and multi-purpose turf areas

21

CITY OF SAN DIEGO PARKS MASTER PLAN

Table 3: Parks and Recreation Facility Typologies

Pocket Park or Plaza	Small, highly accessible parks near residential areas with features, such as picnic areas, play areas, and multi-purpose turf areas
Trailhead Pocket Parks*	Small parks near trailheads with directional, regulatory, and educational signage, seating, native planting, and other passive recreational features.
Recreation Center	Facilities that serve at least 25,000 people and may include gyms, indoor courts, multi-purpose rooms, and community-serving facilities
Aquatics Complexes	Pools and support facilities that serve a population of at least 50,000
Activity Facilities	Facilities that serve multiple communities and may include a Sports Complex, a senior and teen center, and other facilities
Joint Use Facility	Recreation areas or sports facilities available for public use through long-term joint-use agreement with partners
Trails/Connections	Linkages that connect people with open space and active public spaces
Privately owned Park Site	Recreation space available for public use through agreements, public use easements, and other legal instruments
Non-Traditional Park Sites	Atypical park sites such as rooftops, interior space of non-park buildings, and portions of other publicly-owned property
Urban Watershed Parks	Areas of habitat fragmented by development but bound by topographic features resulting in natural drainage processes, linkages, and compatible recreation uses.
Linear Parks	Passive or active recreation uses in urban areas, arranged parallel to the public right-of-way or a geographical feature; can be continuous or a sequence of recreational spaces, linked by a pedestrian and/or multi-use path.

2.0

*Note: Proposed trails and recreation on lands conserved pursuant to the Multiple Species Conservation Plan (MSCP) will meet the MSCP conditions for compatibility through appropriate biological analyses.

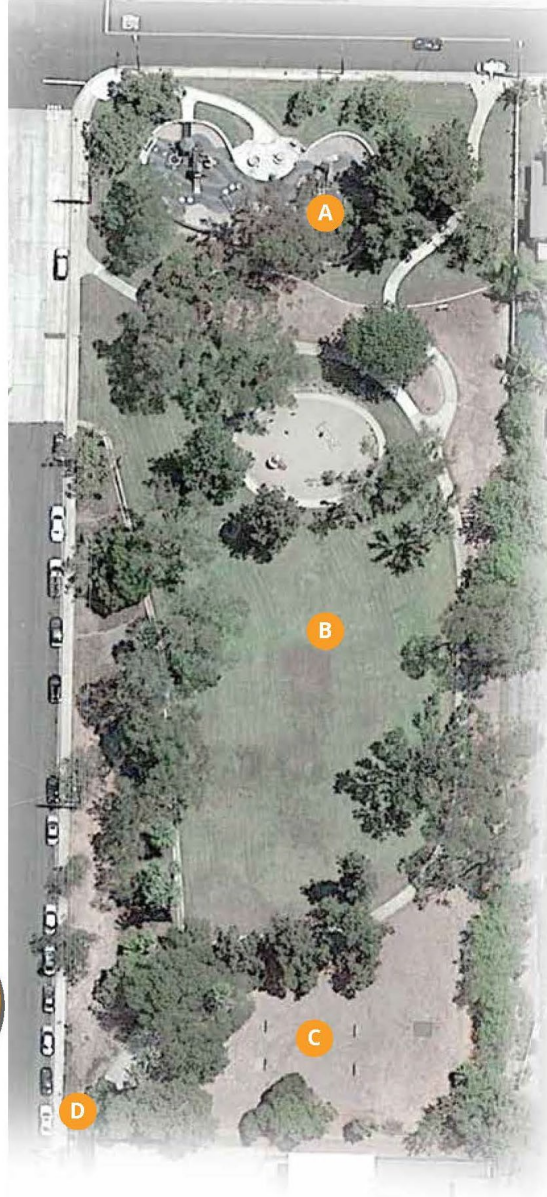


Park De La Cruz Skatepark

WHAT WE HAVE

22

Mini Park - Existing



EXISTING
105
POINTS

Existing Recreation Point Value		
Key	Amenities	Points
	Park Size	14
A	Play Area	42
B	Multi-Purpose Turf Area	28
C	Specialty Recreation (soft-surface)	7
D	Integration with Transit (500 ft)	14
Total		105
Population Served		1,050

Under existing standard,
proposed park serves
1,050 residents

- Existing acreage =2.3

Mini Park – Proposed



Proposed Recreation Point Value		
Key	Amenities	Points
	Mini Park	14
A	Play Area	42
B	Multi-Purpose Turf Area	14
C	Specialty Recreation	7
D	Integration With Transit	14
E	Skate Plaza	7
F	Half-Court Basketball	3.5
G	Off-Leash Dog Area	10.5
H	Food Area/Concessions	7
I	Community Garden	7
J	All-Weather Shade Cover	14
K	Amphitheater	14
L	Wayfinding/Signage	7
M	Public Art	7
N	Interpretive Elements	7
O	Fitness Circuit	14
P	Connection to Public/Civic Use	7
Total		182
Population Served		1,820

Under new standard,
proposed park serves
1,820 residents

- More residents served
- Increased amenities
- Park more activated

Park Standard

100 Park Points per 1,000

- Parks accrue points based on their features within established point categories related to park size, recreation opportunities, access, and activations
- Point categories include
 - Nature exploration areas
 - Sports lighting
 - Restrooms
 - Connection to class 1 or cycle track
 - Integrated with transit
 - Shorelines
 - Trails and trailheads

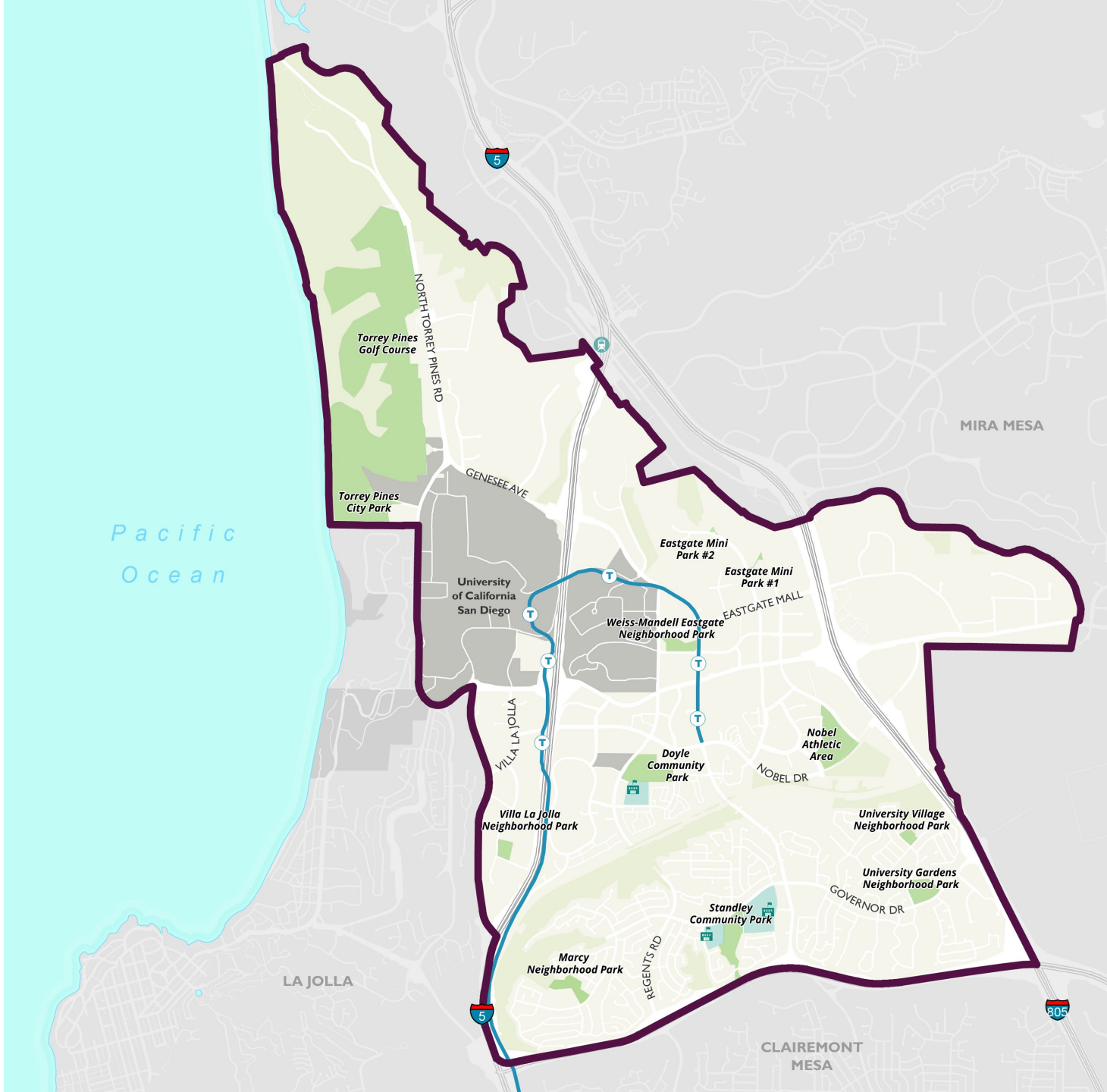
Recreation Center and Aquatic Complexes

- Current standard remain in place
 - 17,000 SF of recreation center per 25,000 people
 - 1 aquatic complex per 50,000 people

EXISTING COMMUNITY & NEIGHBORHOOD PARKS

UNIVERSITY COMMUNITY PARKS

- Joint Use / Play All Day Parks
- Parks



EXISTING PARKS POINTS

Name	Park Type	Points
Nobel Athletic Community Park	Community Park	745.5
Doyle Community Park	Community Park	637
Standley Community Park	Community Park	451.5
University Village Neighborhood Park	Neighborhood Park	84
University Gardens Neighborhood Park	Neighborhood Park	231
Marcy Neighborhood Park	Neighborhood Park	133
Weiss Mandell Eastgate Joint- Use Park	Neighborhood Park	147
Villa La Jolla Neighborhood Park	Neighborhood Park	140
Eastgate Mini Park #1	Mini Park	6.12
Eastgate Mini Park #2	Mini Park	2.62

**not all parks shown – approximate points calculated*

FUTURE PARKS

- Current Population (2020)
 - 74,511
 - Required Park Points (2020)
 - 7,451
 - Current Park Points
 - 3,305
 - Existing Park Deficit
 - (4,145)
 - Recreation center: 46,660 SF
 - Aquatic complexes: 2
- Future Population Estimate
 - ~108,000 to 145,000
 - Future Park Needs Estimate
 - ~10,800 to 14,500
 - Aquatic Complexes Estimate
 - Total Required ~1.49
 - ~.51 surplus
 - Recreation Centers Estimate
 - Total required ~85,680
 - ~(39.020) SF



NORTH UNIVERSITY PARKS/PUBLIC SPACE OPPORTUNITIES

- An Updated Community Plan will **provide guidance** on how to achieve better places with new development
- Goal will be to not only provide new buildings, but make the **spaces in between better**
- Begin to see public spaces as a **coordinated system** for the community rather than insulated places

BETTER GUIDANCE



Neighborhood
identity banner

Outdoor
seating

Pedestrian-friendly
lighting

Public
Art

Wayfinding
signage

Planter boxes
and trees

Pedestrian
furniture



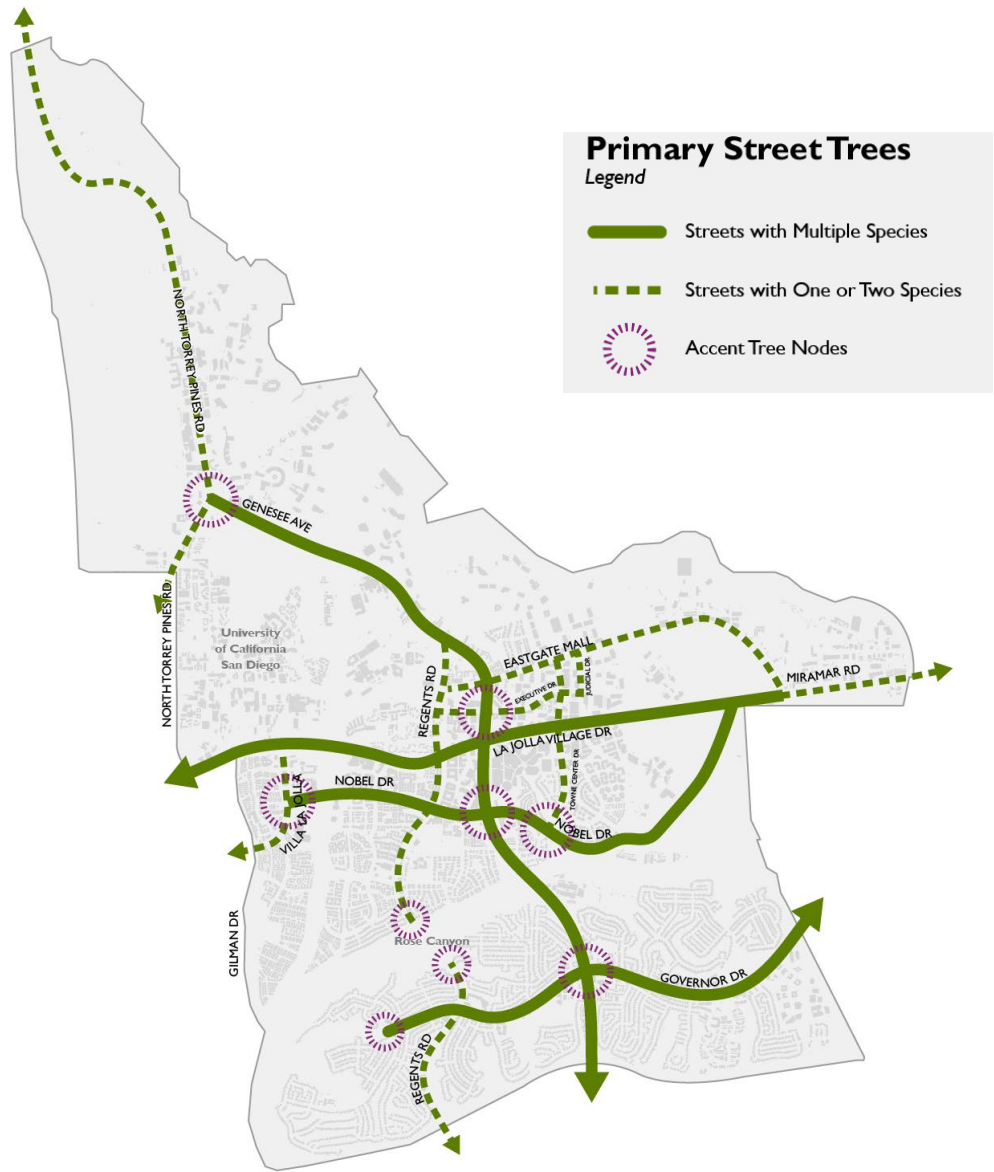
An aerial photograph of a city area with a green boundary line and red lines. The green boundary encloses a central urban area, while red lines trace specific paths within and around this area. Labels on the map include 'Gilman Dr' in the upper left, 'La Jolla Country Day School' in the upper center, and 'Frederickson Recycling Center' in the lower right. The text 'INTEGRATED CONNECTIONS' is overlaid in large white letters across the center of the map.

INTEGRATED CONNECTIONS



EXECUTIVE DRIVE PROMENADE

URBAN GREENING

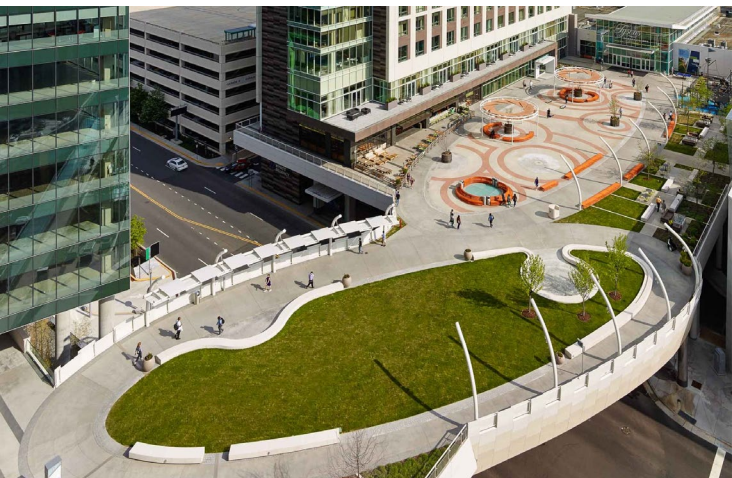




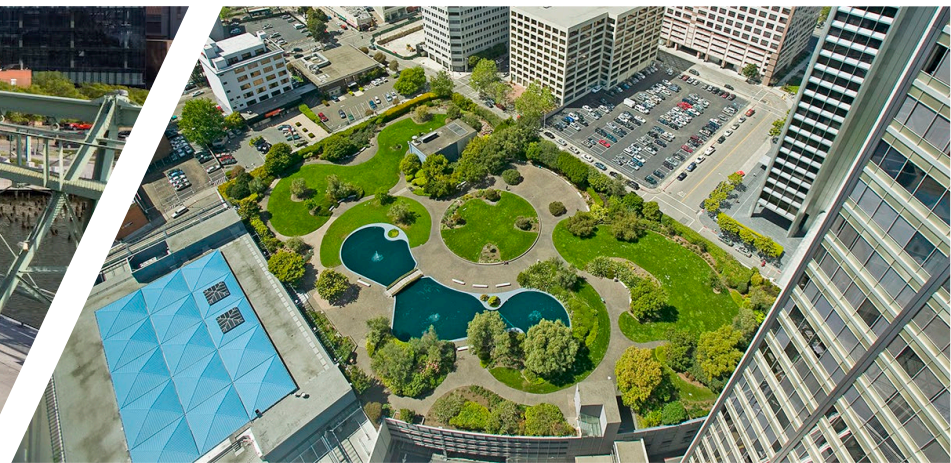
FORMALIZING INFORMAL SPACES



INTEGRATING RECREATION ASSETS WITH HOUSING



CREATIVE USE OF SPACES





BMP / STORMWATER CONVEYANCE

EASTGATE MINI PARK #2

Park Type: Mini Park



Regents North





SOUTH UNIVERSITY CITY PARKS/PUBLIC SPACE OPPORTUNITIES

Regents South



Governor Linear Park





Governor Linear Park

NATURE PLAY AMENITIES



OPEN SPACE OVERLOOKS



UNIVERSITY VILLAGE NEIGHBORHOOD PARK

Park Type: Neighborhood Park



DISCUSSION

What opportunities can you identify to add more recreation points into the community?

- Improvements at existing parks
- Creative new park ideas

NEXT STEPS (Tentative)

