

Parks and Recreation Department

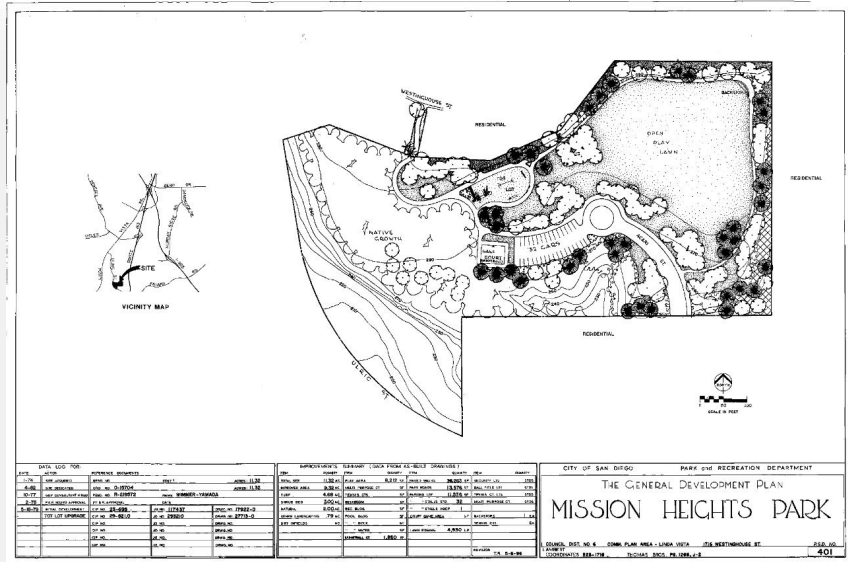
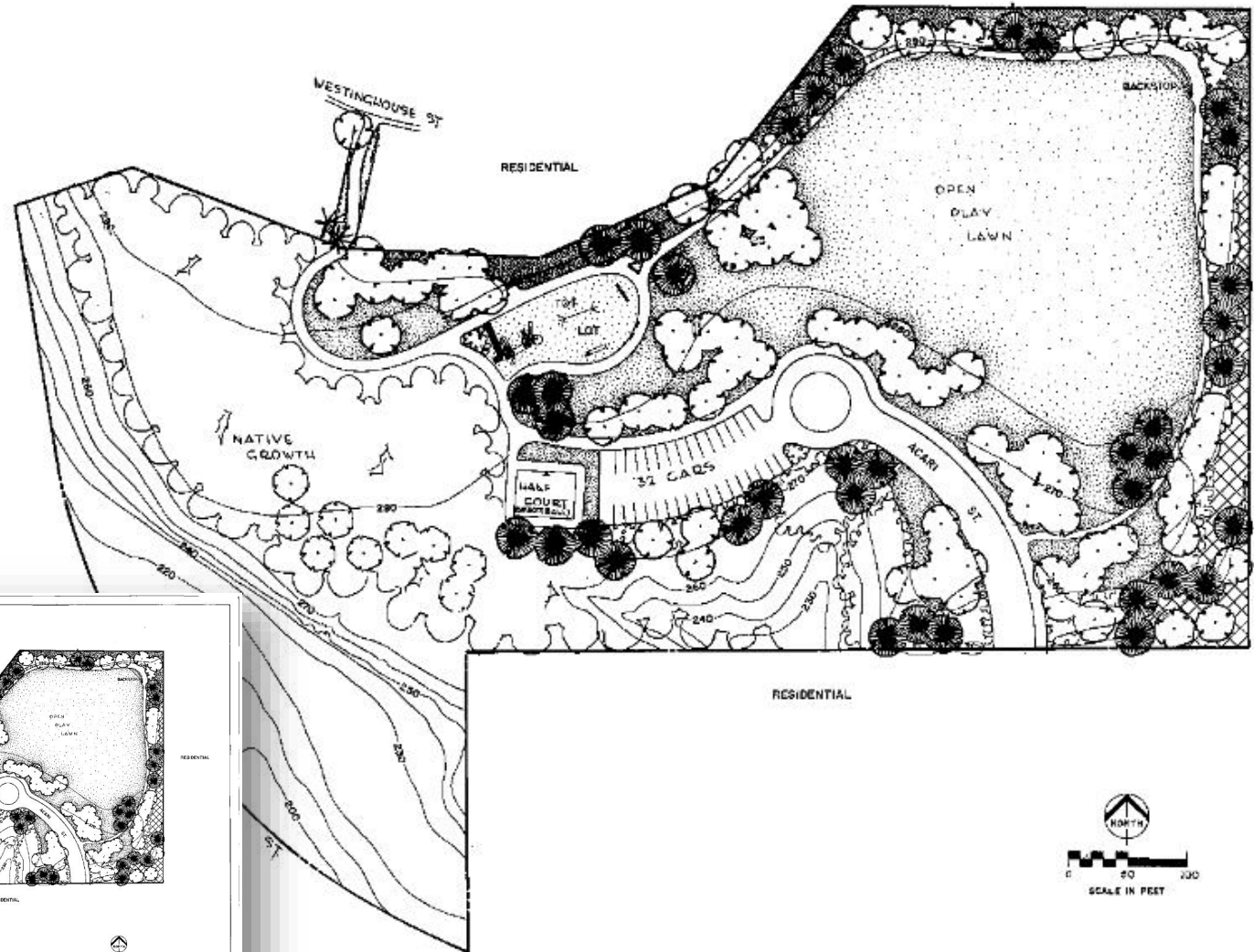
Mission Heights Neighborhood Park Proposed Dog Off-Leash Area (DOLA)

**Linda Vista Community Recreation Group
Regular Meeting – Workshop Item
June 10, 2025**



Current GDP

Adding a Dog Off-Leash Area requires an amendment to the existing General Development Plan (GDP).





FAQ: *How City Parks Are Designed* GDP Amendment

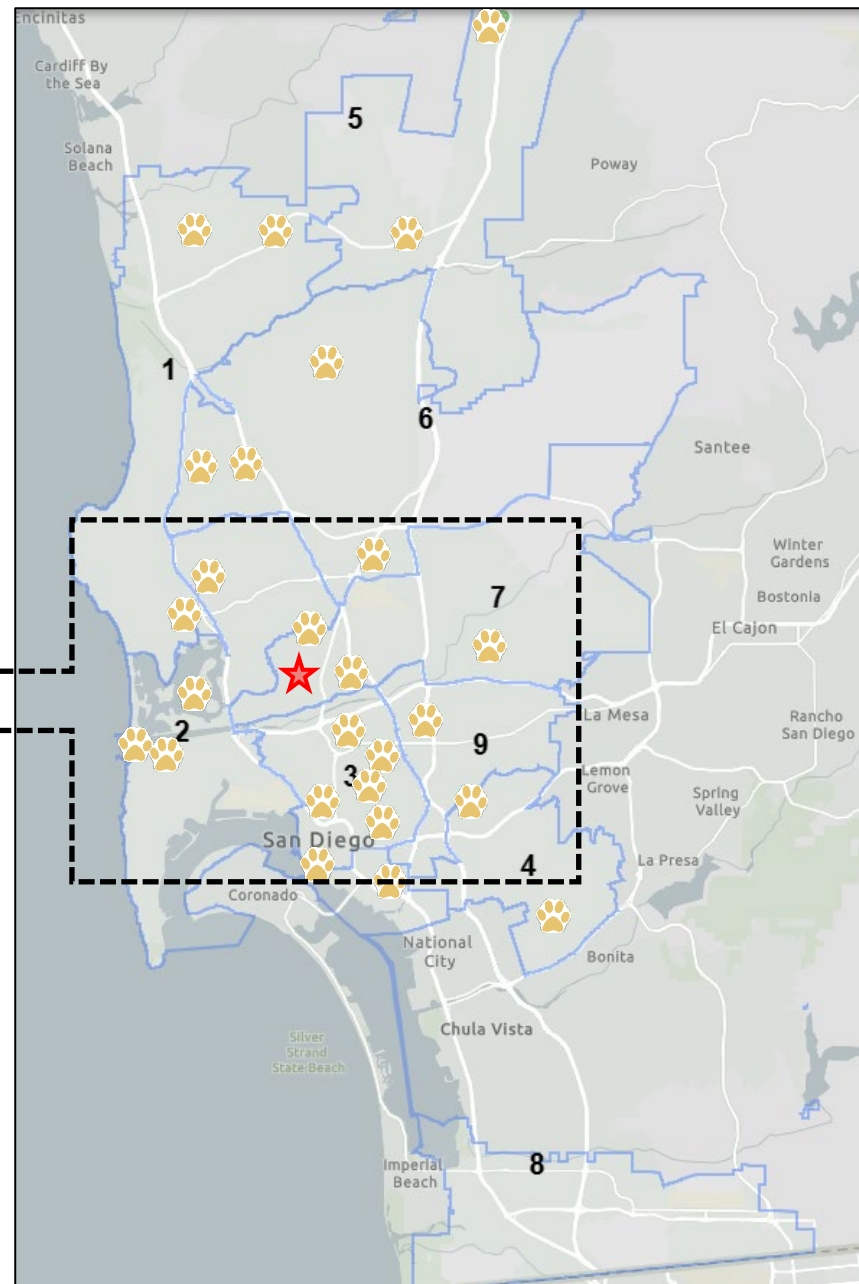
The screenshot shows the San Diego Parks & Recreation website. The header includes the SD logo and navigation links: Parks & Recreation Home, General Info, Rec Centers & Pools, Regional and Open Space Parks, Golf, Programs & Events, and Design & Development. The main content area is titled "FAQ: How City Parks Are Designed" and includes a brief introduction: "The City of San Diego follows a comprehensive and community-driven process to plan and design parks. This FAQ explains how the City gathers input from the community, the key planning documents that guide park development, and the steps involved from concept to construction." Below this is a list of eight FAQ items, each with a dropdown arrow: "What is the public input process required for park projects?", "What is the Parks Master Plan, and how does it shape community input?", "Why is public input important in the park design process?", "What is a General Development Plan (GDP)?", "How can I get involved in the GDP design process?", "Why are Parks and Recreation's public meetings hosted by the Community Recreation Groups (CRGs) and not the Community Planning Groups (CPGs)?", "Where can I find out about upcoming GDP meetings?", and "What can I do if I have a comment about a proposed GDP?". To the right of the FAQ is a sidebar titled "Design and Development" with links to "Design & Development Home", "Current Park Projects", and "Park Planning Documents". Below these are buttons for "Existing Parks", "Capital Improvements Program Overview", "Park Design FAQ", "General Development Plans", and "Subscribe to Park Design and Development Notices". At the bottom of the sidebar is a "Quick References" section with links to "Ask Parks", "Department Phone List", "Park Use Permits and Applications", and "Park Use Rules and Regulations".



Existing Dog Parks *City of San Diego*



PROJECT LOCATION



Objectives

- **Parks Master Plan**
 - Parks Master Plan (2021) highlights off-leash dog parks as a key recreational feature.
 - Off-leash dog parks are a priority, based on strong community demand.
- **Reducing Vehicle Miles Travelled**
 - Providing recreation amenities close to home decreases the need for car trips in alignment with the City's Climate Action initiatives.
- **Alternative to dogs off-leash in non-DOLA designated areas**

Community input revealed common priorities for residents with an emphasis on investing in:



Acquisition of land for new parks;



Improvements and maintenance of existing parks and facilities;



Neighborhood parks;



Open space and trails;



Off-leash dog parks;



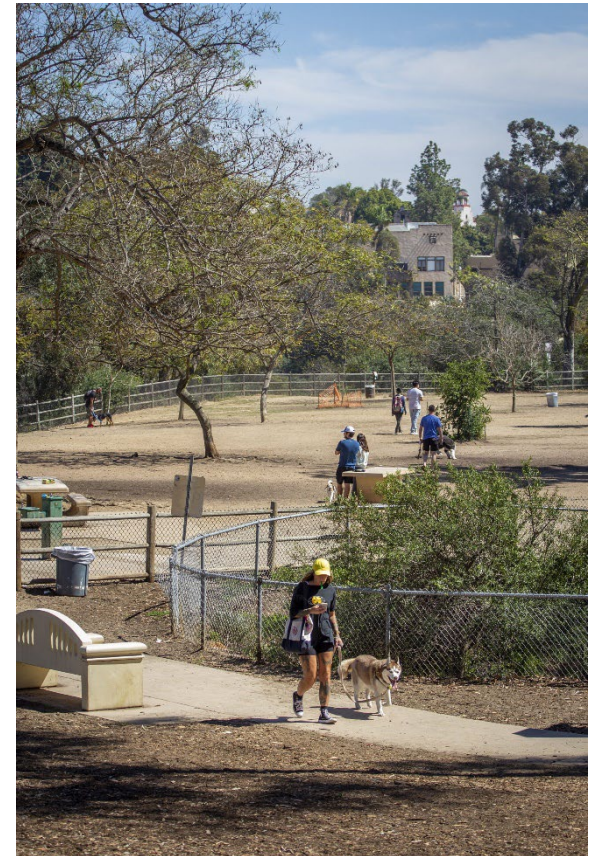
Aquatic facilities;



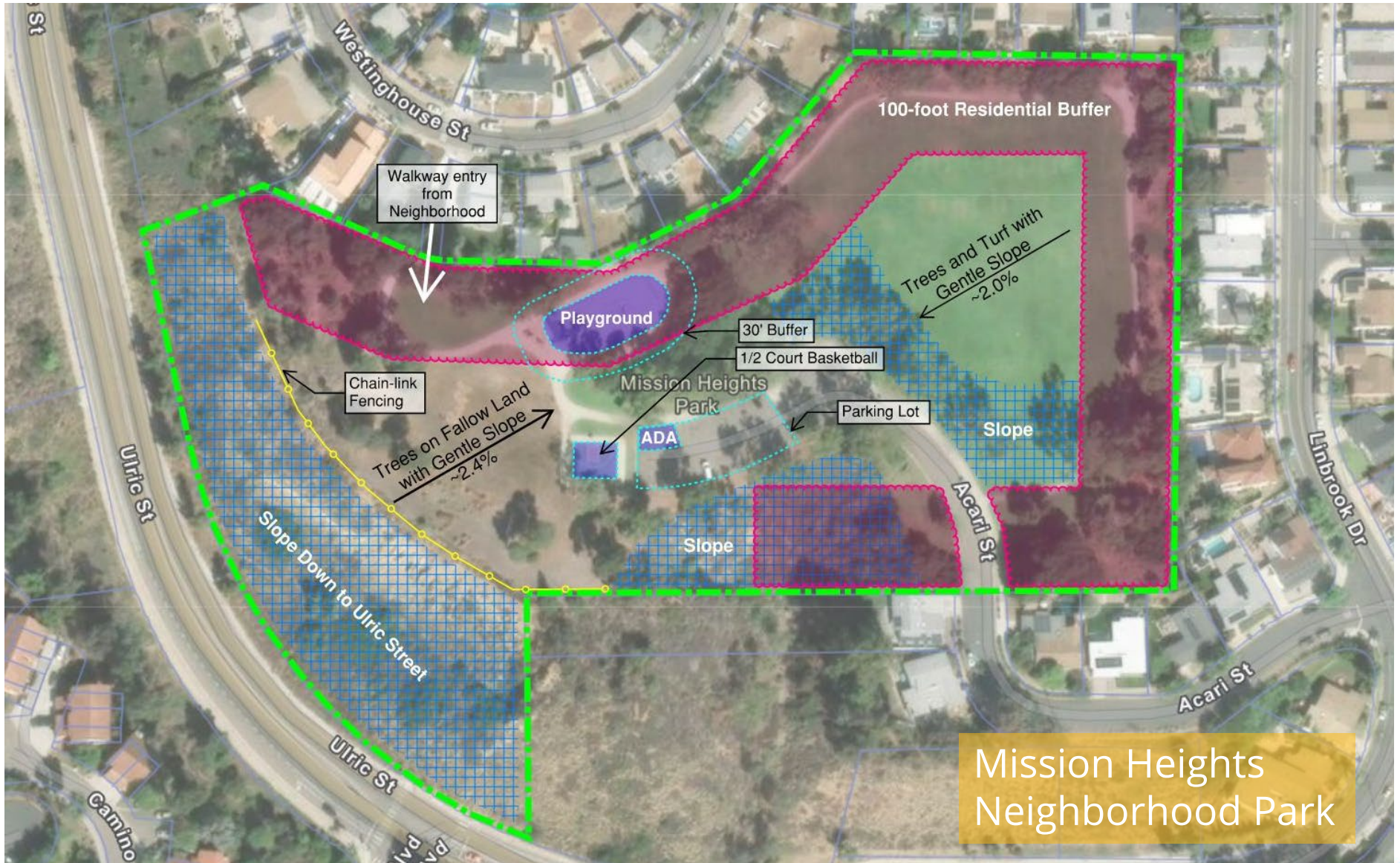
Fitness and wellness programs;

DOLA Site Considerations

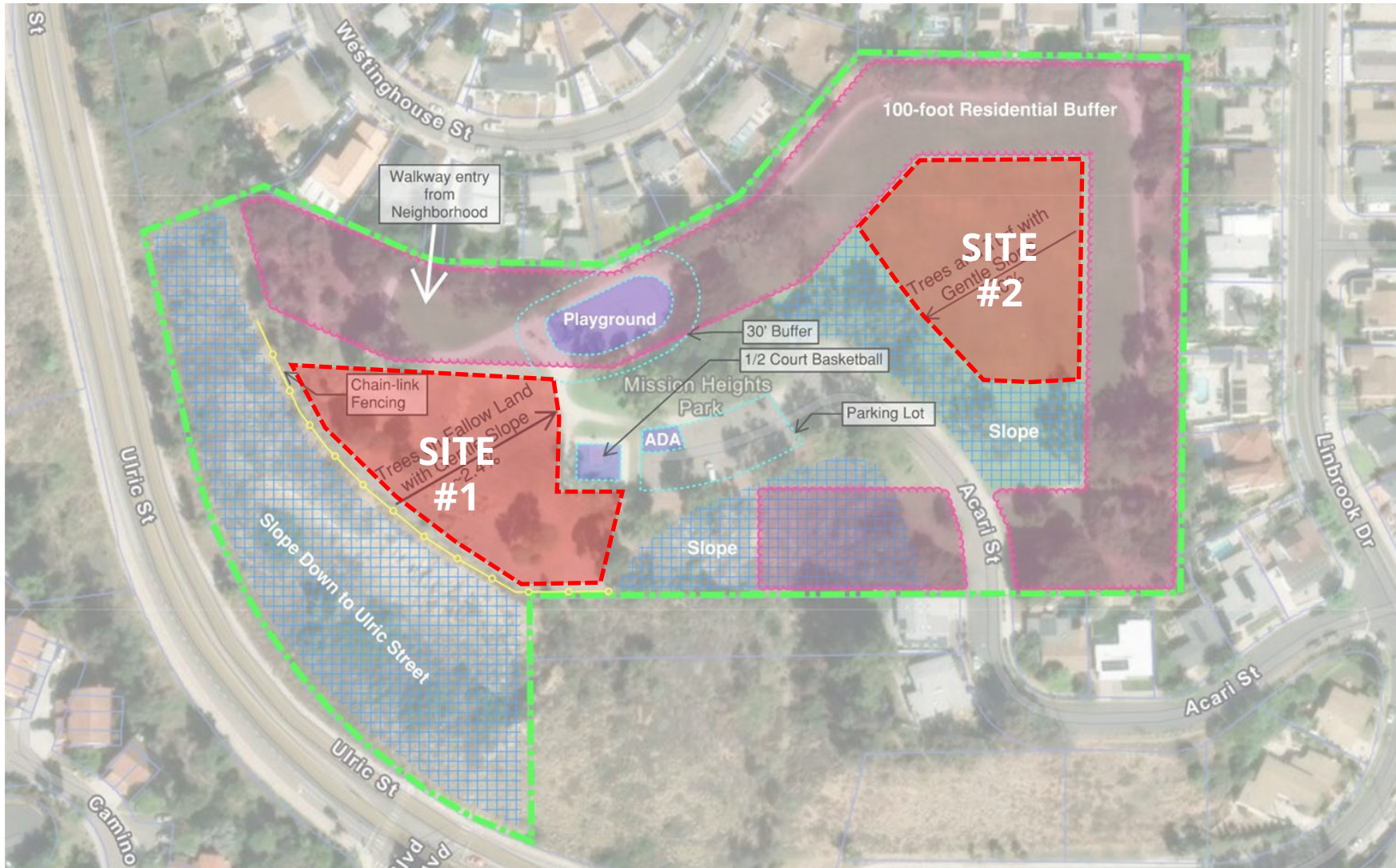
- Proximity to residential areas
- Proximity to playgrounds
- Compatibility with adjacent park uses
- Accessibility/ compliance with ADA
- Current uses by the community
- Topography
- Existing vegetation type (turf, shrubs, fallow)
- Adequate space available
- Ease and potential cost of DOLA addition



Existing Conditions



Potential Sites

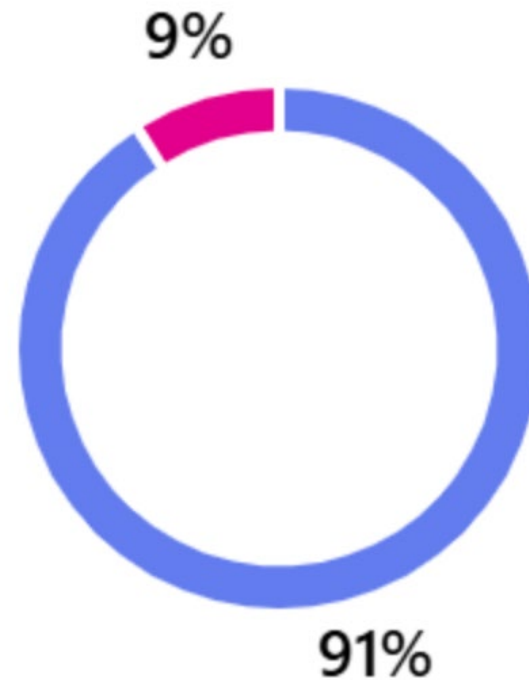
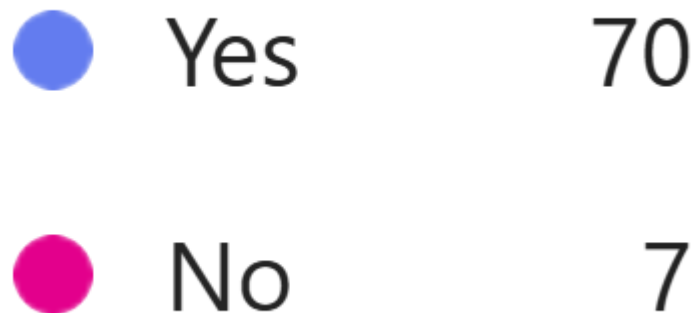




Survey Results – 77 Responses / 4 Questions

Question #1:

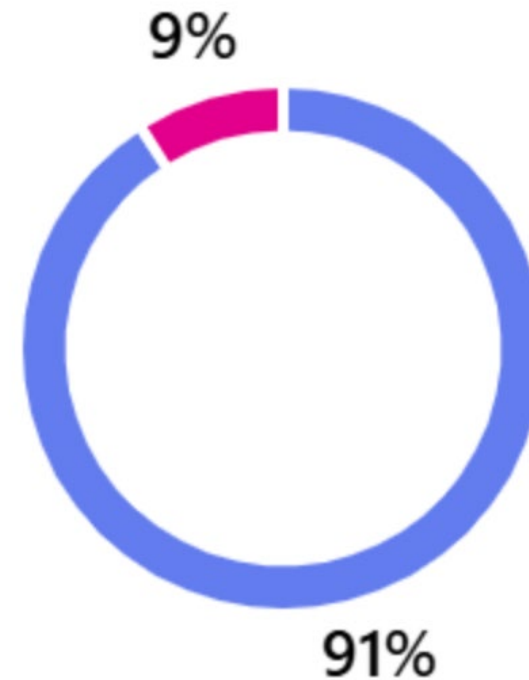
Would you like to see a dog off-leash area (DOLA) added to Mission Heights Neighborhood Park?



Survey Results – 77 Responses / 4 Questions

Question #2:

If a dog-off leash area is added to Mission Heights Neighborhood Park, which site would you prefer?



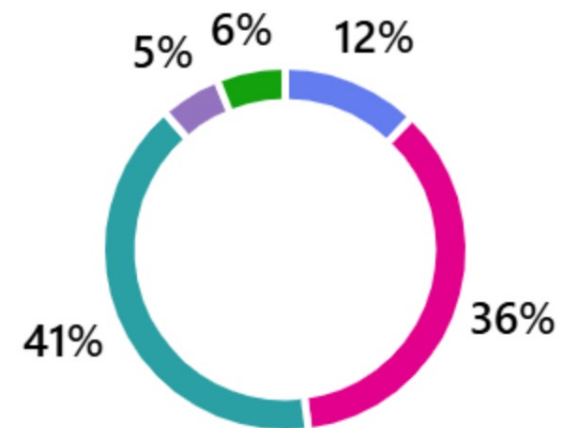


Survey Results – 77 Responses / 4 Questions

Question #3:

What amenities would you like to see at the proposed Dog Off-Leash Area? (Pick your top 2)

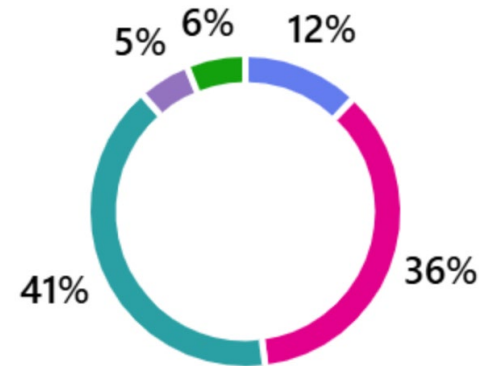
● Drinking Fountain (with dog bowl)	60
● Seating for People	53
● Agility Opportunities for Dogs	18
● Planting Outside the Perimeter of the DOLA	8
● Other	9



Survey Results – 77 Responses / 4 Questions

Question #3:

What amenities would you like to see at the proposed Dog Off-Leash Area? (Pick your top 2)



● Other

- Trash cans w/ dog waste bags
- Shade
- Fencing
- Undeveloped/native land for dogs to run through
- Porta potties for kids' playground area and DOLA
- Grass/irrigation/other to mitigate dust and dog pee smell – anything but sand or dirt (2)
- Separate sections for large and small dogs with secure vestibules to leash/unleash (3)



Survey Results – 77 Responses / 4 Questions

Question #4:

Please share any additional comments or suggestions:
(36 responses summarized)

- Safety: Entrance close to parking lot and set back from park walkways with secure vestibule, increase Humane Society patrols, fencing, separate sections for large and small dogs
- Comfort: Benches, Plantings, Shade Trees, Restroom
- Info: Signage with regulations and regional dog park info & events
- Cleanliness: Ability for area to be watered down, bags provided for dog waste, surfacing to help keep dogs clean (no dirt)
- Support: Formation of community advisory committee to provide financial and volunteer support, NFP partners to provide amenities (e.g. agility course).

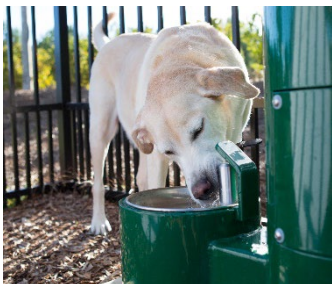


Existing Conditions: Site #1

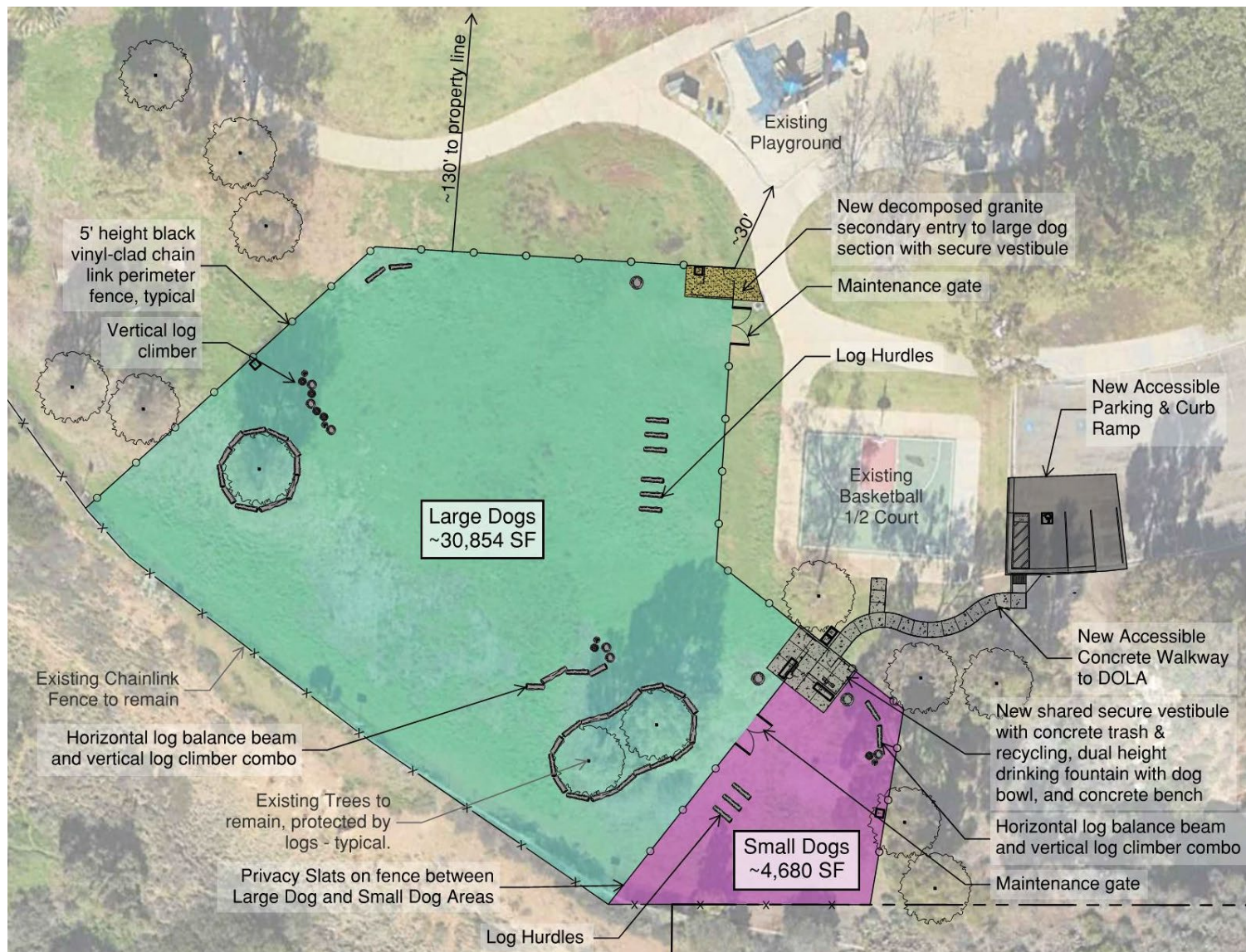


Potential Elements & Amenities

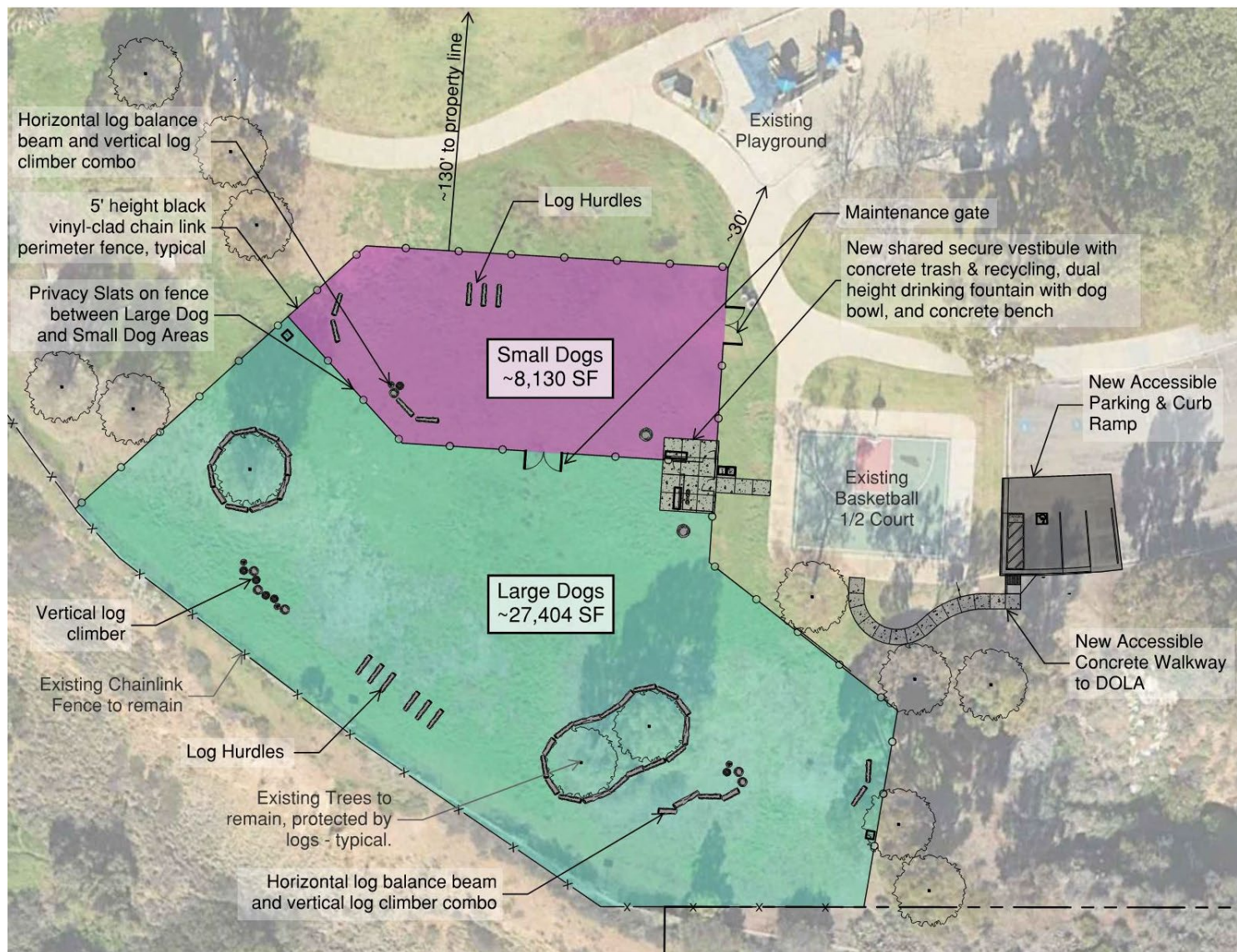
- ADA path of travel from parking to shared entry vestibule
- Double-gated, Secure Vestibule
- Separate Areas for Large & Small Dogs
- Drinking Fountain w/ Dog Bowl
- Agility Opportunities for Dogs
- Seating for People
- Dog Waste Bag Dispenser



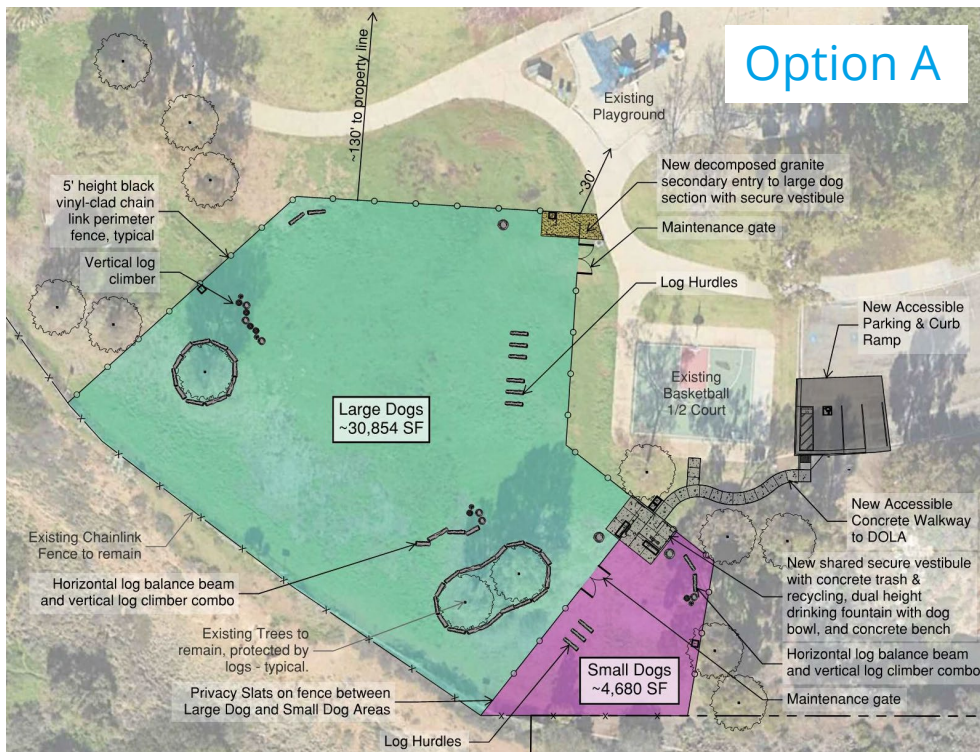
SITE #1 - Option A



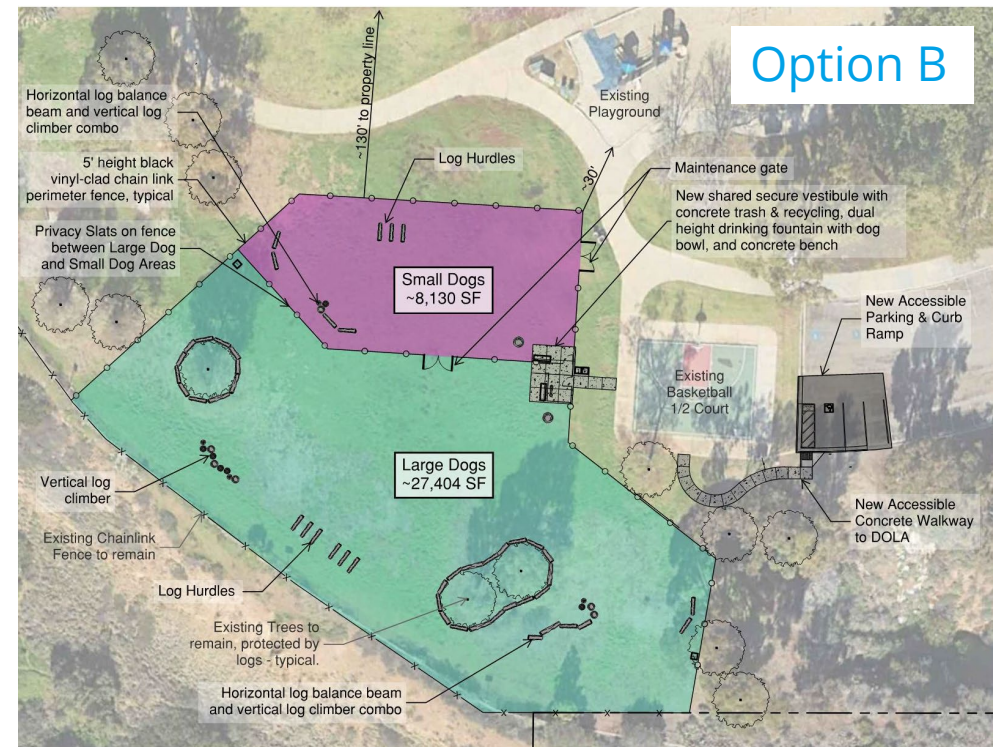
SITE #1 - Option B



SITE #1 – Design Discussion



Comments?



Comments?

DOLA Surfacing Options

PREFERRED: 6" thick layer of mulch

- Engineered Wood Fiber (EWF) – same mulch used on playgrounds. Has been tumbled and ground to reduce pokes and splinters.
- Monkey Hair – Ground Palm Mulch. Palm fibers are less pokey and splintery than wood fiber. Knits together and doesn't displace as much as EWF.

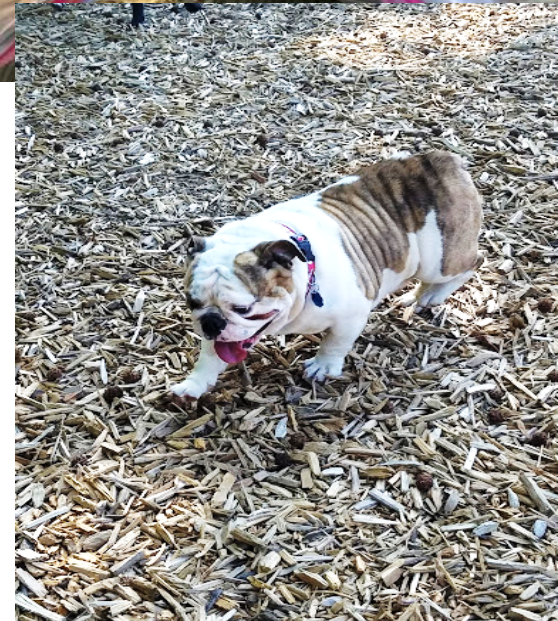


Cost prohibitive:

- Natural and artificial turf or other plant cover

Other options:

- Decomposed Granite – Not compatible with existing mature trees. Has more downtime when wet. Can be dusty. Weeds can become a maintenance issue.





Cleanliness Monitoring System (Pilot)

GOOD CONDITION

IN NEED OF ATTENTION

POOR CONDITION



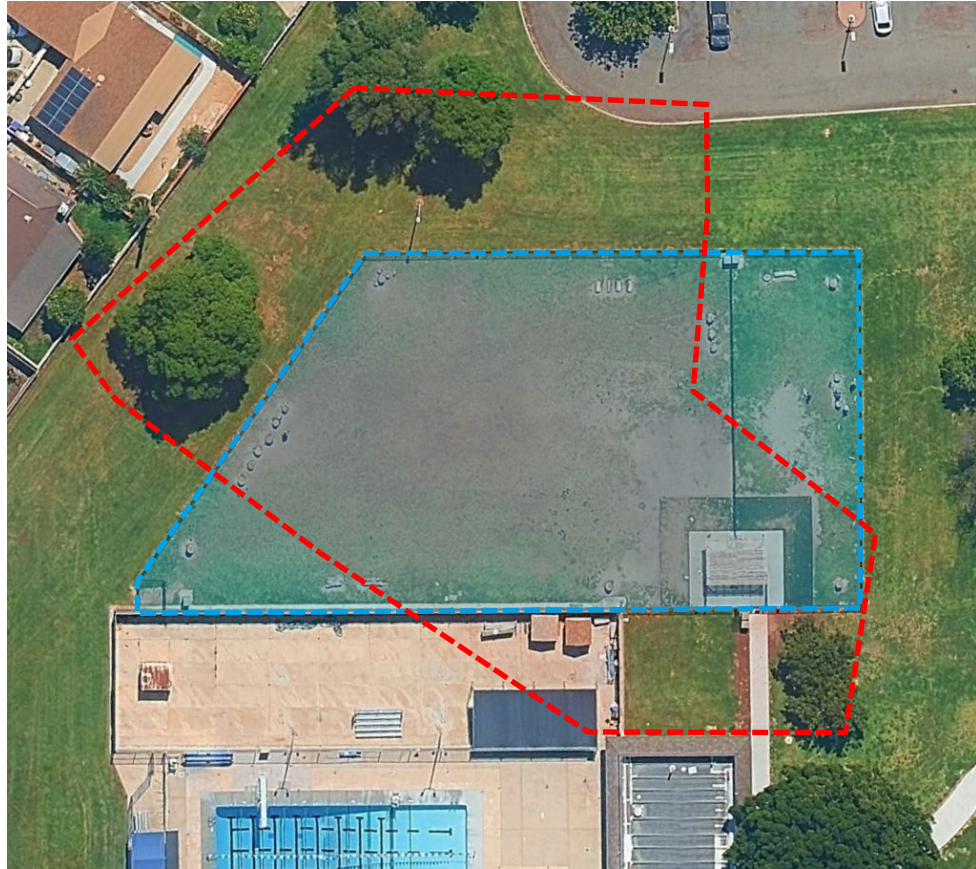
Cleanliness Monitoring Pilot: System to track cleanliness at DOLAs

Goal: Increase compliance with rules and improve hygiene at DOLAs

Owner Responsibility: Pick up & properly dispose of dog waste and comply with rules

Cleanliness Status Signs: Green, yellow, or red sliders indicate risk level;
Red = possible closure by City staff due to excessive waste or rule violations

How would
the size of
Mission
Heights NP
DOLA
compare to
other
DOLAs in
San Diego?



Charles Lewis III Memorial DOLA = 9,000 SF

Doyle CP DOLA = 22,765 SF

Allied Gardens CP DOLA = 27,850 SF 

Mission Heights NP DOLA = +/- 36,000 SF 

Nate's Point DOLA (Balboa Park) = 117,230 SF



Mission Heights DOLA would be larger than 86% of City of San Diego DOLAs*

Mission Heights DOLA would be larger than the following DOLA's:

- Allied Gardens CP
- Capehart NP
- Centrum NP
- Charles Lewis III NP
- Children's Park
- Civita Park
- Doyle CP
- Ed Center
- Gompers NP
- Maddox NP
- Memorial CP
- Nobel CP
- North Park CP
- Pacific Highlands Ranch CP
- Paradise Hills CP
- Rancho Peñasquitos NP
- Torrey Highlands NP
- Ward Canyon NP



Process: Approval of GDP Amendment

- CRG Workshop #1: March 11, 2025
- Survey Period: March 11 – April 1
- CRG Workshop #2: **June 10, 2025 (TODAY!)**
 - The DOLA design will be revised based on the input from this workshop into a final plan to be voted on by the CRG.
- CRG Action Item: Recommendation of approval
- CEQA determination by Planning Department & Public Noticing
- P&R Board Action Item: Recommendation of approval



Sign-Up for the Project Email List!



Mission Heights Neighborhood Park GDP Amendment

Email List for Project Updates

Please provide your contact information if you would like to be notified about project updates.

First name

Last name

* Email

By submitting this form, you are consenting to receive marketing emails, from City of San Diego. You can revoke your consent to receive emails at any time by using the Safe Unsubscribe® link, found at the bottom of every email.

Sign Up

Visit our Website





Questions & Feedback

