

Chollas Dam
Sunny Day Dam Breach
Overview
San Diego County, California
State Dam ID: 8.002
& National Dam ID: CA00107



Modeling Date: March-2019
Map Date: April-2020
By: S. Wolfskill

- Legend**
- Cross Section
 - Flow Path
 - Detailed Sheet Extent
 - Approx. Maximum Flooding Extent

Notes:

1. This inundation map has been prepared in a manner consistent with that level of care and skill ordinarily exercised by Kleinfelder's profession practicing in the same locality, under similar conditions and at the date services are provided. Our conclusions, opinions, and recommendations are based on a limited number of observations, data, and the current guidance and requirements outlined by the California DSOD.
2. The information on this graphic representation has been compiled from a variety of sources and is subject to change without notice. Kleinfelder makes no representations or warranties, express or implied, as to accuracy, completeness, timeliness, or rights to the use of such information. The information shown on this map is approximate and should be used as a guideline for emergency response and preparation purposes. This document is not intended for use as a land survey project nor is it designed or intended as construction design document. The use or misuse of the information contained on this graphic representation is at the sole risk of the party using or misusing the information.
3. All elevations are reported in the NAVD88 vertical datum.
4. Inundation depths less than one foot are not shown.
5. Mapped depths and arrival/deflood times will vary based on breach conditions, hydrologic conditions, modelling assumptions, and other factors. Emergency action plans that utilize these maps may want to consider a factor of safety for arrival/deflood times.

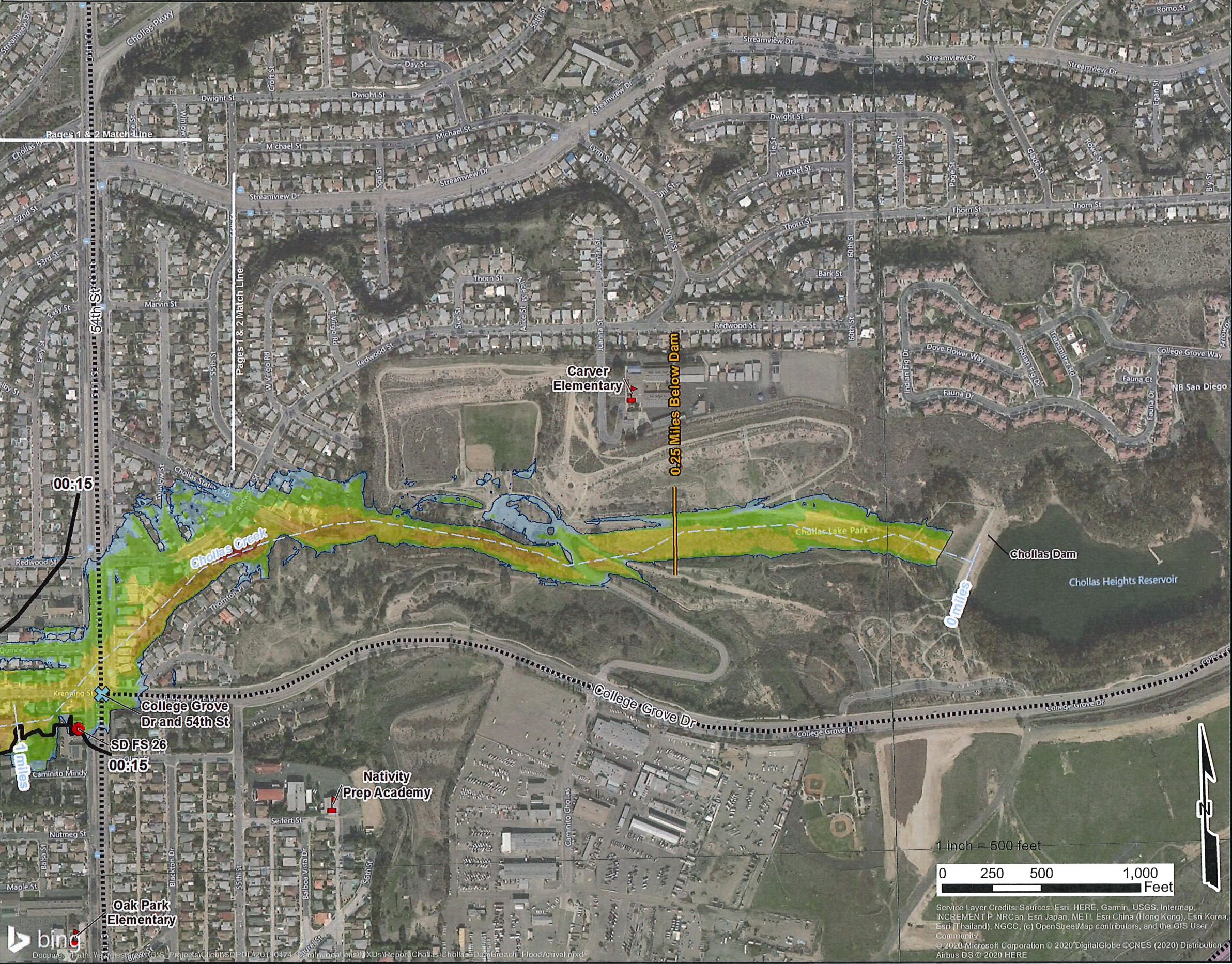
KLEINFELDER SD
Bright People. Right Solutions.

550 West C Street,
Suite 1200
San Diego, CA 92101
(619) 831-4600

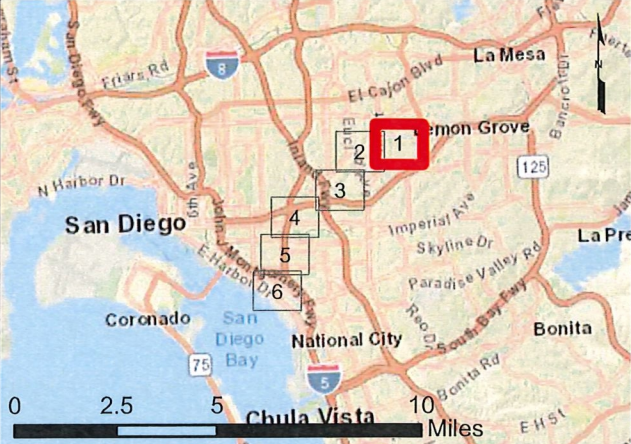
Engineer Elizabeth Bissonnette
License No. C68830

LICENSED PROFESSIONAL ENGINEER
ELIZABETH BISSONNETTE
C68830
4/1/2020
CIVIL
STATE OF CALIFORNIA

Name of Facility	Distance from Dam (mi)	Flood Wave Arrival Time (hrs:mins)	Maximum Inundation Depth (ft)	Peak Velocity (ft/sec)
0.25 Miles Below Dam	0.25	00:05	7	13.1
College Grove Dr and 54th St	1.0	00:13	5	5.5
SD FS 26	1.0	00:16	2	0.7



Chollas Dam
Sunny Day Dam Breach - Sheet 1 of 6
Flood Arrival Times
San Diego County, California
State Dam ID: 8.002
& National Dam ID: CA00107



Modeling Date: March-2019
Map Date: April-2020

By: S. Wolfskill

Legend

Critical Structures

- Critical Road Point
- CalFire Facility
- Licensed Healthcare Facility
- Law Enforcement Facility
- School

- Critical Road
- Cross Section
- Approx. Time to 1 Foot Depth (hrs:mins)
- Flow Path
- Approx. Maximum Flooding Extent
- Municipal Boundary

Maximum Inundation Depth (ft)

- 1 to 2
- 2 to 5
- 5 to 10
- 10 to 20
- 20+

* Variations in color are dependent upon the background imagery.

Notes:
1. This inundation map has been prepared in a manner consistent with that level of care and skill ordinarily exercised by Kleinfelder's profession practicing in the same locality, under similar conditions and at the date services are provided. Our conclusions, opinions, and recommendations are based on a limited number of observations, data, and the current guidance and requirements outlined by the California DSOD.
2. The information on this graphic representation has been compiled from a variety of sources and is subject to change without notice. Kleinfelder makes no representations or warranties, express or implied, as to accuracy, completeness, timeliness, or rights to the use of such information. The information shown on this map is approximate and should be used as a guideline for emergency response and preparation purposes. This document is not intended for use as a land survey project nor is it designed or intended as construction design document. The use or misuse of the information contained on this graphic representation is at the sole risk of the party using or misusing the information.
3. All elevations are reported in the NAVD88 vertical datum.
4. Inundation depths less than one foot are not shown.
5. Mapped depths and arrival/deflood times will vary based on breach conditions, hydrologic conditions, modelling assumptions, and other factors. Emergency action plans that utilize these maps may want to consider a factor of safety for arrival/deflood times.

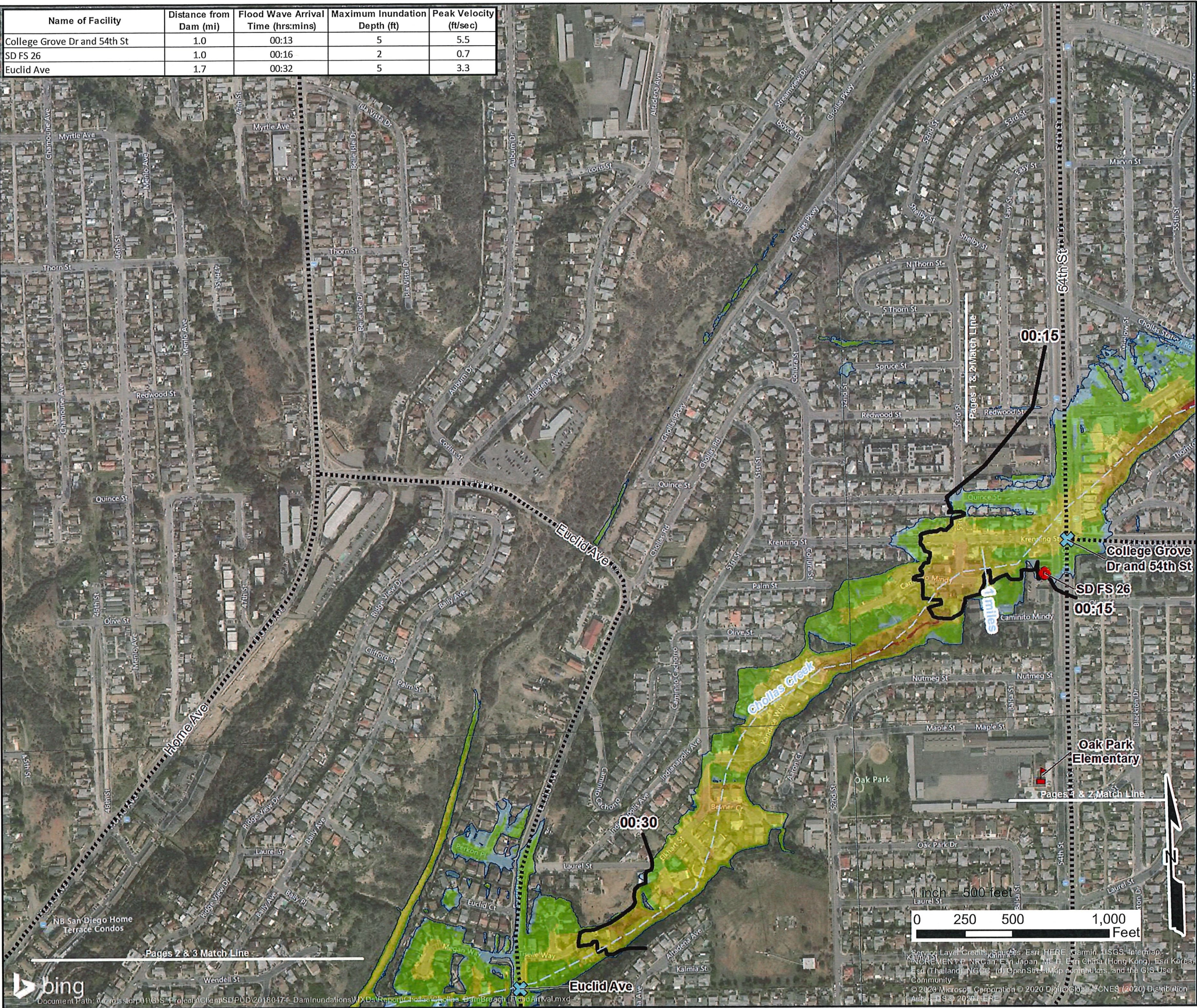
KLEINFELDER SD
Bright People. Right Solutions.

550 West C Street,
Suite 1200
San Diego, CA 92101
(619) 831-4600

Engineer: Elizabeth Bissonnette
License No. C68830



Name of Facility	Distance from Dam (mi)	Flood Wave Arrival Time (hrs:mins)	Maximum Inundation Depth (ft)	Peak Velocity (ft/sec)
College Grove Dr and 54th St	1.0	00:13	5	5.5
SD FS 26	1.0	00:16	2	0.7
Euclid Ave	1.7	00:32	5	3.3



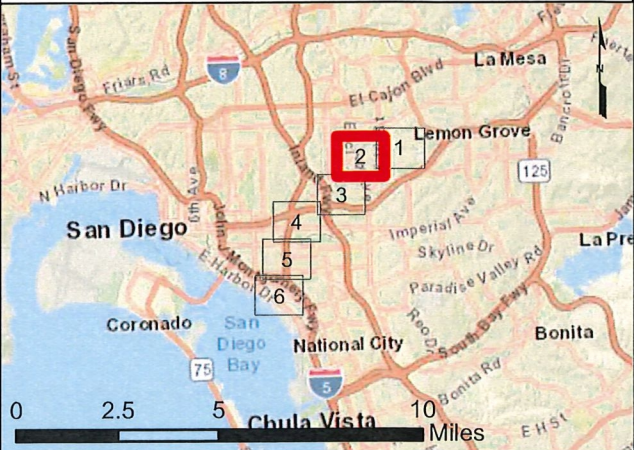
Chollas Dam
Sunny Day Dam Breach - Sheet 2 of 6

Flood Arrival Times

San Diego County, California

State Dam ID: 8.002

& National Dam ID: CA00107



Modeling Date: March-2019

Map Date: April-2020

By: S. Wolfskill

Legend

Critical Structures

- Critical Road Point
- CalFire Facility
- Licensed Healthcare Facility
- Law Enforcement Facility
- School

- Critical Road
- Cross Section
- Approx. Time to 1 Foot Depth (hrs:mins)

- Flow Path
- Approx. Maximum Flooding Extent
- Municipal Boundary

Maximum Inundation Depth (ft)

- 1 to 2
 - 2 to 5
 - 5 to 10
 - 10 to 20
 - 20+
- * Variations in color are dependent upon the background imagery.

Notes:
1. This inundation map has been prepared in a manner consistent with that level of care and skill ordinarily exercised by Kleinfelder's profession practicing in the same locality, under similar conditions and at the date services are provided. Our conclusions, opinions, and recommendations are based on a limited number of observations, data, and the current guidance and requirements outlined by the California DSOD.
2. The information on this graphic representation has been compiled from a variety of sources and is subject to change without notice. Kleinfelder makes no representations or warranties, express or implied, as to accuracy, completeness, timeliness, or rights to the use of such information. The information shown on this map is approximate and should be used as a guideline for emergency response and preparation purposes. This document is not intended for use as a land survey project nor is it designed or intended as construction design document. The use or misuse of the information contained on this graphic representation is at the sole risk of the party using or misusing the information.
3. All elevations are reported in the NAVD88 vertical datum.
4. Inundation depths less than one foot are not shown.
5. Mapped depths and arrival/deflood times will vary based on breach conditions, hydrologic conditions, modeling assumptions, and other factors. Emergency action plans that utilize these maps may want to consider a factor of safety for arrival/deflood times.

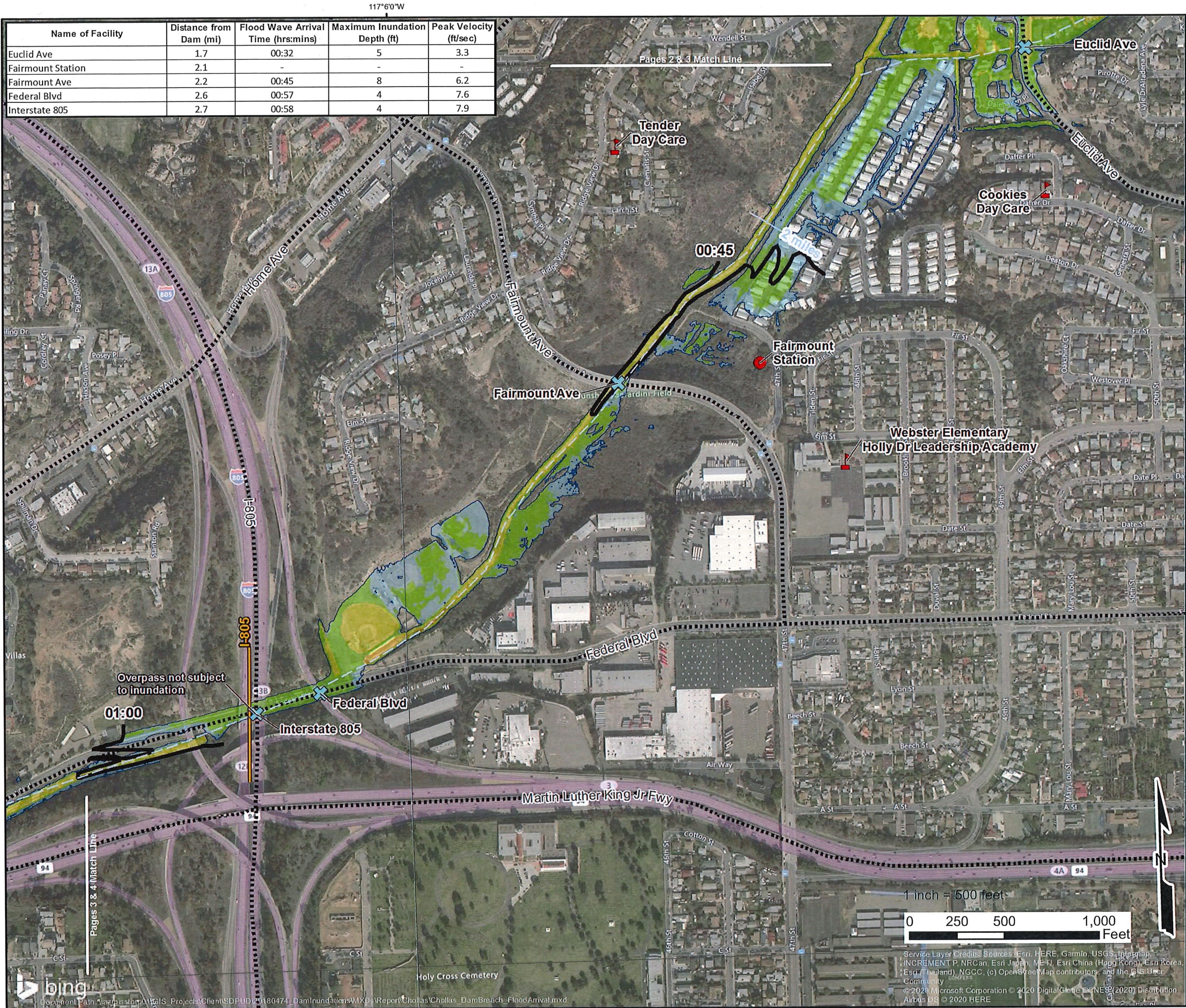


550 West C Street,
Suite 1200
San Diego, CA 92101
(619) 831-4600

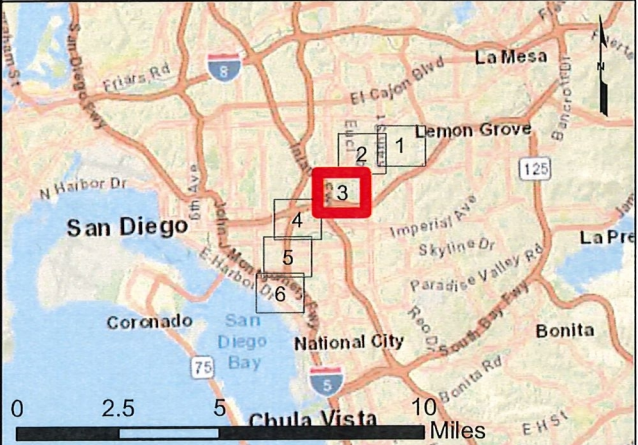
Engineer Elizabeth Bissonnette

License No. C68830





Chollas Dam
Sunny Day Dam Breach - Sheet 3 of 6
Flood Arrival Times
San Diego County, California
State Dam ID: 8.002
& National Dam ID: CA00107



Modeling Date: March-2019
Map Date: April-2020

By: S. Wolfskill

Legend

Critical Structures

- Critical Road Point
- CalFire Facility
- Licensed Healthcare Facility
- Law Enforcement Facility
- School

- Critical Road
- Cross Section
- Approx. Time to 1 Foot Depth (hrs:mins)
- Flow Path
- Approx. Maximum Flooding Extent
- Municipal Boundary

Maximum Inundation Depth (ft)

- 1 to 2
 - 2 to 5
 - 5 to 10
 - 10 to 20
 - 20+
- * Variations in color are dependent upon the background imagery.

Notes:
1. This inundation map has been prepared in a manner consistent with that level of care and skill ordinarily exercised by Kleinfelder's profession practicing in the same locality, under similar conditions and at the date services are provided. Our conclusions, opinions, and recommendations are based on a limited number of observations, data, and the current guidance and requirements outlined by the California DSOD.
2. The information on this graphic representation has been compiled from a variety of sources and is subject to change without notice. Kleinfelder makes no representations or warranties, express or implied, as to accuracy, completeness, timeliness, or rights to the use of such information. The information shown on this map is approximate and should be used as a guideline for emergency response and preparation purposes. This document is not intended for use as a land survey project nor is it designed or intended as construction design document. The use or misuse of the information contained on this graphic representation is at the sole risk of the party using or misusing the information.
3. All elevations are reported in the NAVD88 vertical datum.
4. Inundation depths less than one foot are not shown.
5. Mapped depths and arrival/deflood times will vary based on breach conditions, hydrologic conditions, modeling assumptions, and other factors. Emergency action plans that utilize these maps may want to consider a factor of safety for arrival/deflood times.



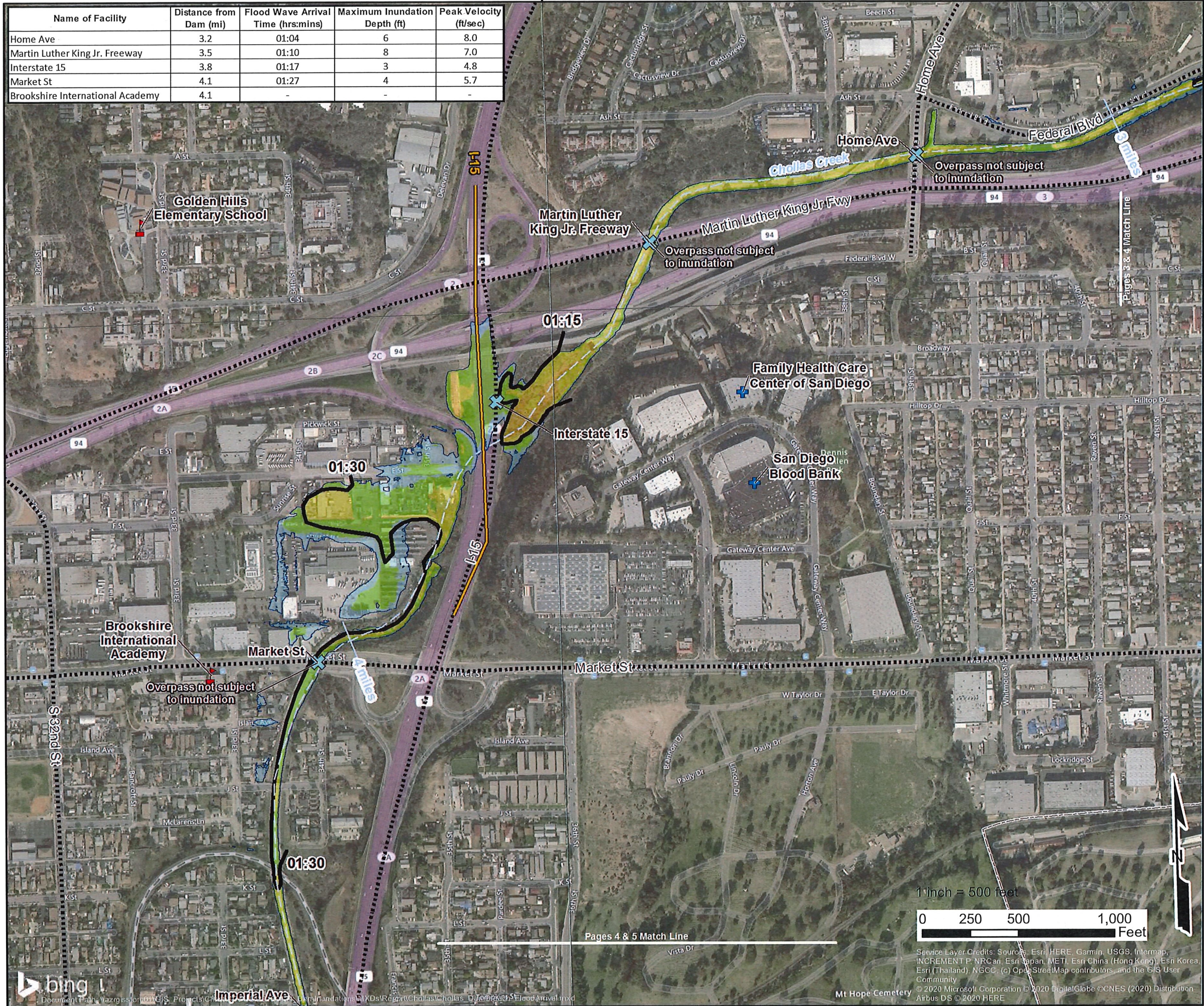
550 West C Street,
Suite 1200
San Diego, CA 92101
(619) 831-4600

Engineer: Elizabeth Bissonnette

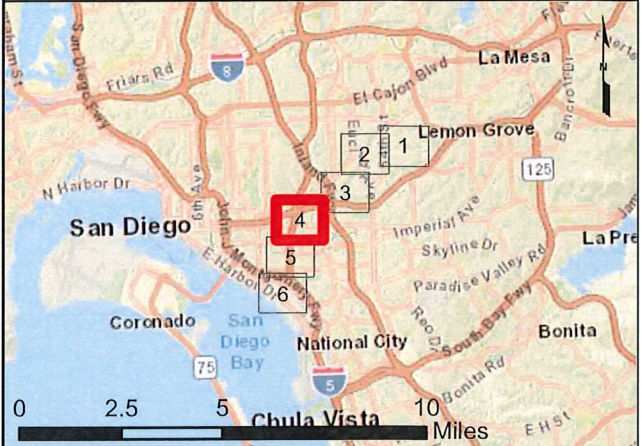
License No. C68830



Name of Facility	Distance from Dam (mi)	Flood Wave Arrival Time (hrs:mins)	Maximum Inundation Depth (ft)	Peak Velocity (ft/sec)
Home Ave	3.2	01:04	6	8.0
Martin Luther King Jr. Freeway	3.5	01:10	8	7.0
Interstate 15	3.8	01:17	3	4.8
Market St	4.1	01:27	4	5.7
Brookshire International Academy	4.1	-	-	-



Chollas Dam
Sunny Day Dam Breach - Sheet 4 of 6
Flood Arrival Times
San Diego County, California
State Dam ID: 8.002
& National Dam ID: CA00107



Modeling Date: March-2019
Map Date: April-2020
By: S. Wolfskill

- Legend**
- Critical Structures**
- Critical Road Point
 - CalFire Facility
 - Licensed Healthcare Facility
 - Law Enforcement Facility
 - School
- Critical Road**
- Cross Section
 - Approx. Time to 1 Foot Depth (hrs:mins)
 - Flow Path
 - Approx. Maximum Flooding Extent
 - Municipal Boundary
- Maximum Inundation Depth (ft)**
- 1 to 2
 - 2 to 5
 - 5 to 10
 - 10 to 20
 - 20+
- * Variations in color are dependent upon the background imagery.

Notes:

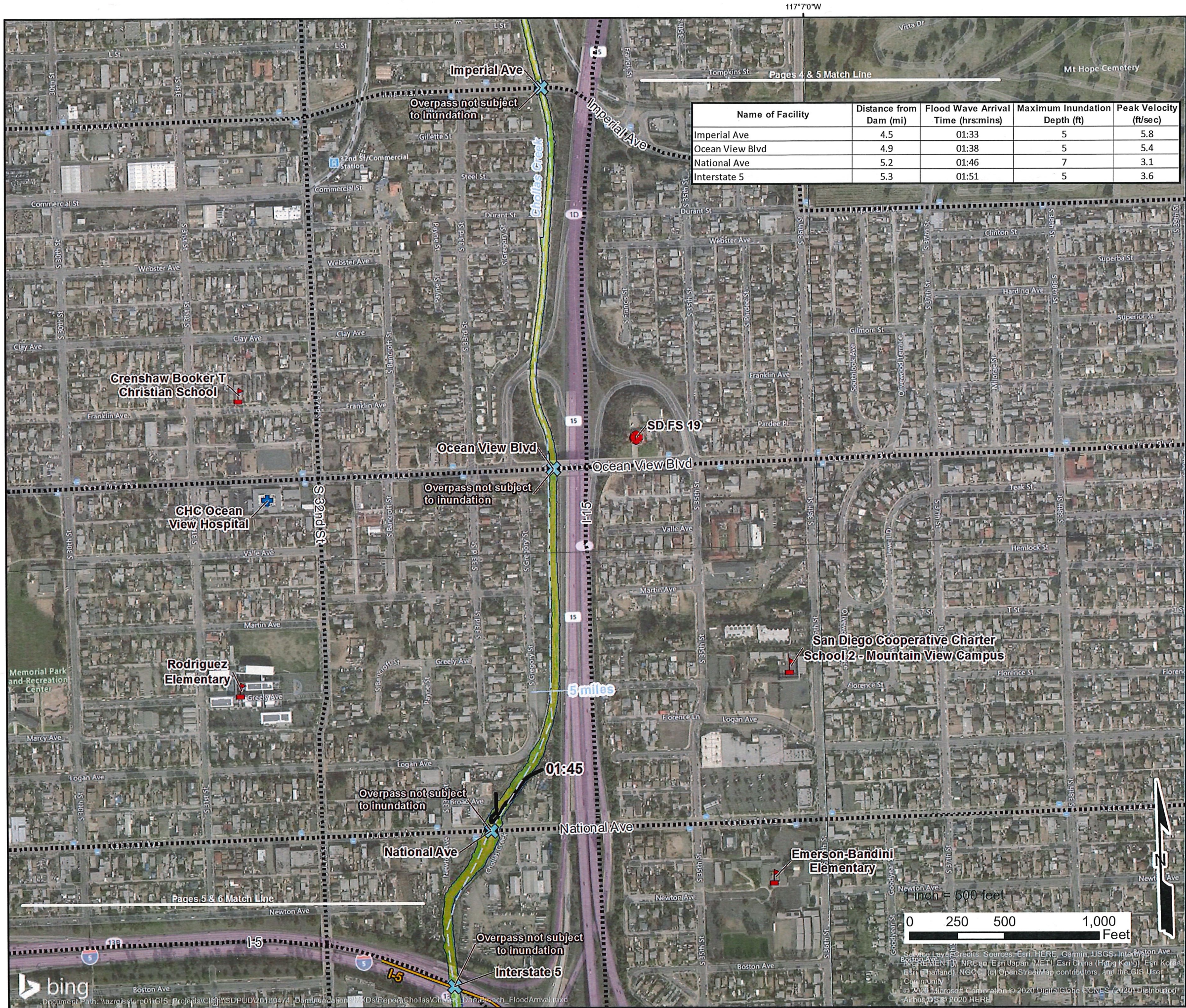
- This inundation map has been prepared in a manner consistent with that level of care and skill ordinarily exercised by Kleinfelder's profession practicing in the same locality, under similar conditions and at the date services are provided. Our conclusions, opinions, and recommendations are based on a limited number of observations, data, and the current guidance and requirements outlined by the California DSOD.
- The information on this graphic representation has been compiled from a variety of sources and is subject to change without notice. Kleinfelder makes no representations or warranties, express or implied, as to accuracy, completeness, timeliness, or rights to the use of such information. The information shown on this map is approximate and should be used as a guideline for emergency response and preparation purposes. This document is not intended for use as a land survey project nor is it designed or intended as construction design document. The use or misuse of the information contained on this graphic representation is at the sole risk of the party using or misusing the information.
- All elevations are reported in the NAVD88 vertical datum.
- Inundation depths less than one foot are not shown.
- Mapped depths and arrival/deflood times will vary based on breach conditions, hydrologic conditions, modeling assumptions, and other factors. Emergency action plans that utilize these maps may want to consider a factor of safety for arrival/deflood times.

KLEINFELDER SD
Bright People. Right Solutions.

550 West C Street,
Suite 1200
San Diego, CA 92101
(619) 831-4600

Engineer Elizabeth Bissonnette
License No. C68830

LICENSED PROFESSIONAL ENGINEER
ELIZABETH BISSONNETTE
C 68830
CIVIL
STATE OF CALIFORNIA



Chollas Dam

Sunny Day Dam Breach - Sheet 5 of 6

Flood Arrival Times

San Diego County, California
State Dam ID: 8.002
& National Dam ID: CA00107

Modeling Date: March-2019
Map Date: April-2020
By: S. Wolfskill

Legend

Critical Structures

- Critical Road Point
- CalFire Facility
- Licensed Healthcare Facility
- Law Enforcement Facility
- School

Critical Road

- Cross Section
- Approx. Time to 1 Foot Depth (hrs:mins)
- Flow Path
- Approx. Maximum Flooding Extent
- Municipal Boundary

Maximum Inundation Depth (ft)

- 1 to 2
- 2 to 5
- 5 to 10
- 10 to 20
- 20+

* Variations in color are dependent upon the background imagery.

Notes:

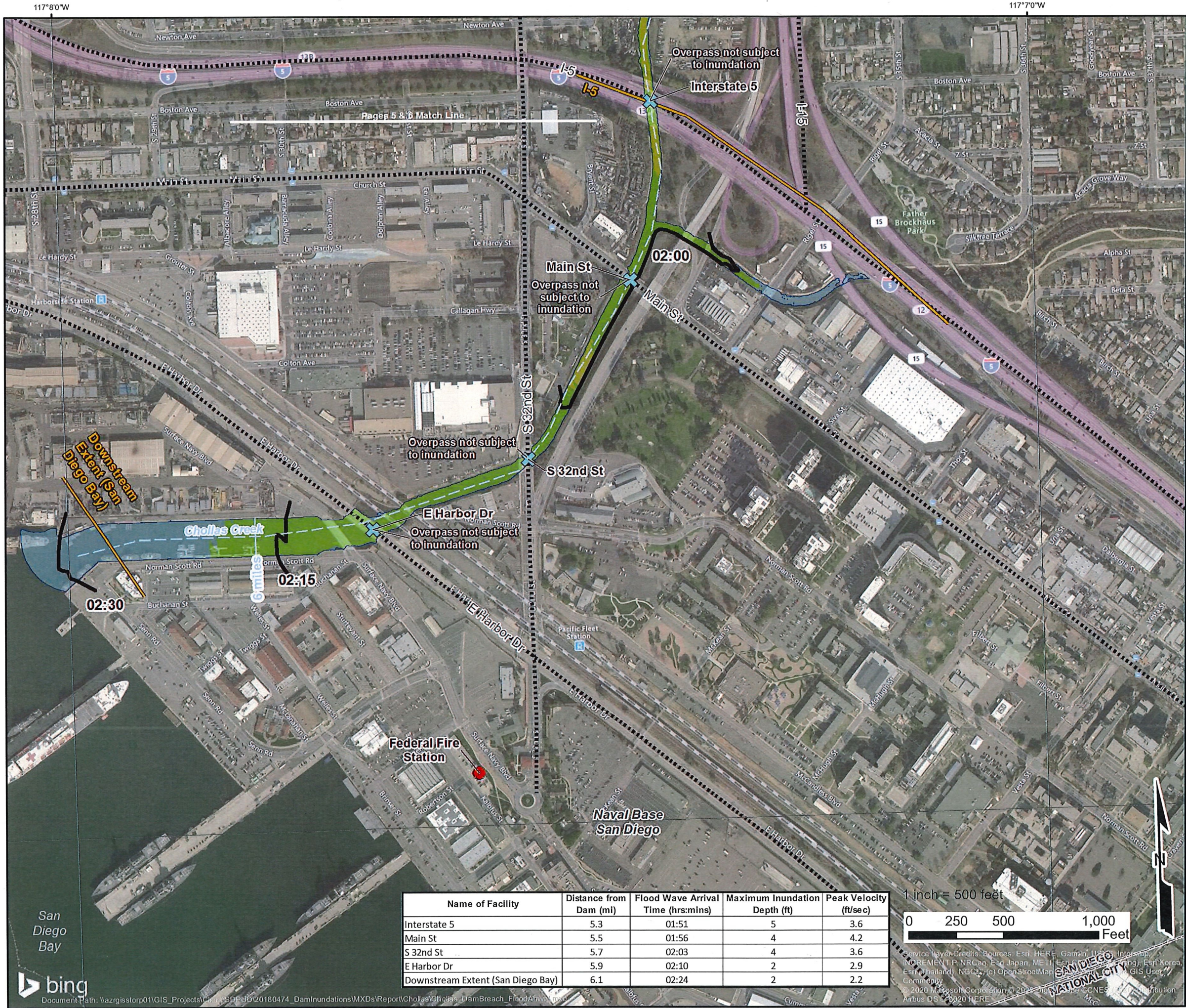
- This inundation map has been prepared in a manner consistent with that level of care and skill ordinarily exercised by Kleinfelder's profession practicing in the same locality, under similar conditions and at the date services are provided. Our conclusions, opinions, and recommendations are based on a limited number of observations, data, and the current guidance and requirements outlined by the California DSOD.
- The information on this graphic representation has been compiled from a variety of sources and is subject to change without notice. Kleinfelder makes no representations or warranties, express or implied, as to accuracy, completeness, timeliness, or rights to the use of such information. The information shown on this map is approximate and should be used as a guideline for emergency response and preparation purposes. This document is not intended for use as a land survey project nor is it designed or intended as construction design document. The use or misuse of the information contained on this graphic representation is at the sole risk of the party using or misusing the information.
- All elevations are reported in the NAVD88 vertical datum.
- Inundation depths less than one foot are not shown.
- Mapped depths and arrival/deflood times will vary based on breach conditions, hydrologic conditions, modeling assumptions, and other factors. Emergency action plans that utilize these maps may want to consider a factor of safety for arrival/deflood times.

KLEINFELDER
Bright People. Right Solutions.

550 West C Street,
Suite 1200
San Diego, CA 92101
(619) 831-4600

Engineer Elizabeth Bissonnette
License No. C68830

LICENSED PROFESSIONAL ENGINEER
ELIZABETH BISSENETTE
C 68830
CIVIL
STATE OF CALIFORNIA



Chollas Dam

Sunny Day Dam Breach - Sheet 6 of 6

Flood Arrival Times

San Diego County, California
State Dam ID: 8.002
& National Dam ID: CA00107

Modeling Date: March-2019
Map Date: April-2020
By: S. Wolfskill

Legend

Critical Structures

- Critical Road Point
- CalFire Facility
- Licensed Healthcare Facility
- Law Enforcement Facility
- School

Other Symbols

- Critical Road
- Cross Section
- Approx. Time to 1 Foot Depth (hrs:mins)
- Flow Path
- Approx. Maximum Flooding Extent
- Municipal Boundary

Maximum Inundation Depth (ft)

- 1 to 2
- 2 to 5
- 5 to 10
- 10 to 20
- 20+

* Variations in color are dependent upon the background imagery.

Notes:

- This inundation map has been prepared in a manner consistent with that level of care and skill ordinarily exercised by Kleinfelder's profession practicing in the same locality, under similar conditions and at the date services are provided. Our conclusions, opinions, and recommendations are based on a limited number of observations, data, and the current guidance and requirements outlined by the California DSOD.
- The information on this graphic representation has been compiled from a variety of sources and is subject to change without notice. Kleinfelder makes no representations or warranties, express or implied, as to accuracy, completeness, timeliness, or rights to the use of such information. The information shown on this map is approximate and should be used as a guideline for emergency response and preparation purposes. This document is not intended for use as a land survey project nor is it designed or intended as construction design document. The use or misuse of the information contained on this graphic representation is at the sole risk of the party using or misusing the information.
- All elevations are reported in the NAVD88 vertical datum.
- Inundation depths less than one foot are not shown.
- Mapped depths and arrival/deflood times will vary based on breach conditions, hydrologic conditions, modeling assumptions, and other factors. Emergency action plans that utilize these maps may want to consider a factor of safety for arrival/deflood times.

550 West C Street,
Suite 1200
San Diego, CA 92101
(619) 831-4600

Engineer Elizabeth Bissonnette

License No. C68830