



Biodiverse SD

Resiliency Advisory Board
July 17, 2025





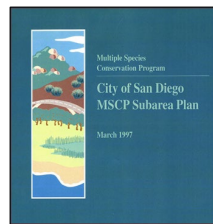
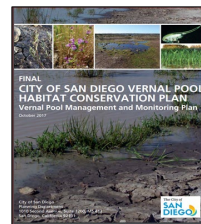
BIODIVERSE SD

"To preserve a network of habitat and open space, protecting ecosystems that improve our quality of life."



Learn more at
<https://www.sandiego.gov/planning/work/biodiversity>

or by scanning the QR code



City of San Diego Multiple Species Conservation Program Subarea Plan

- Subarea encompasses 206,000 acres
- Covers 85 species
- Protects core biological resource areas identified within the City's Multi-Habitat Planning Areas.

Multi- Habitat Planning Area (MHPA)

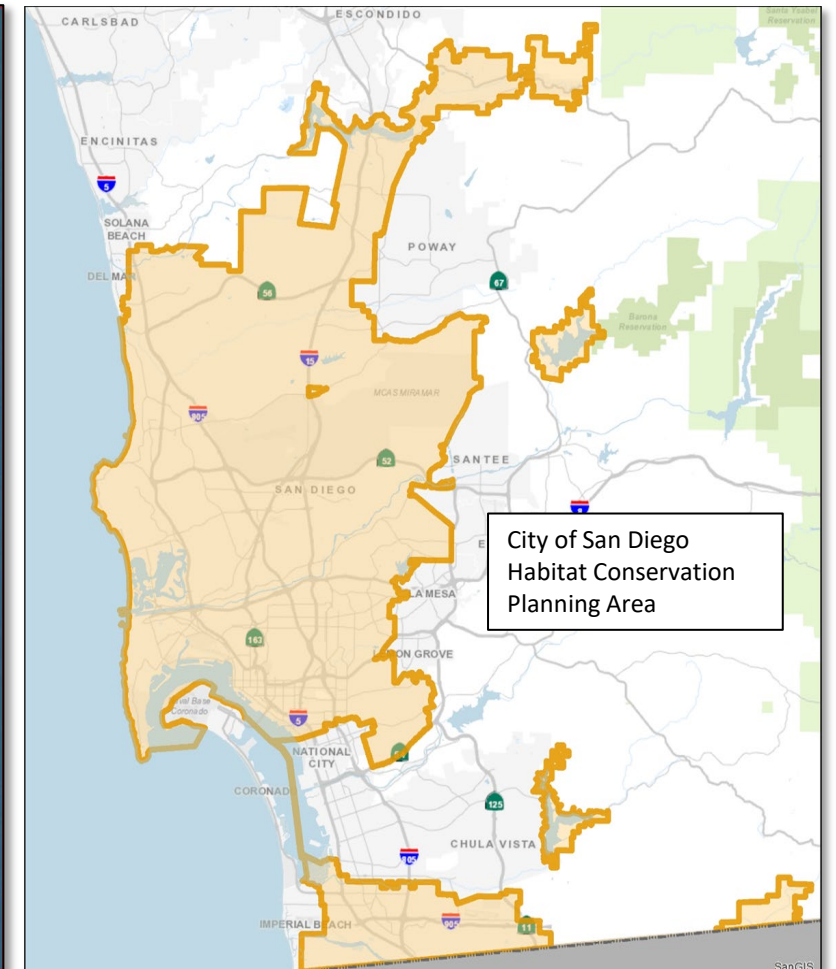
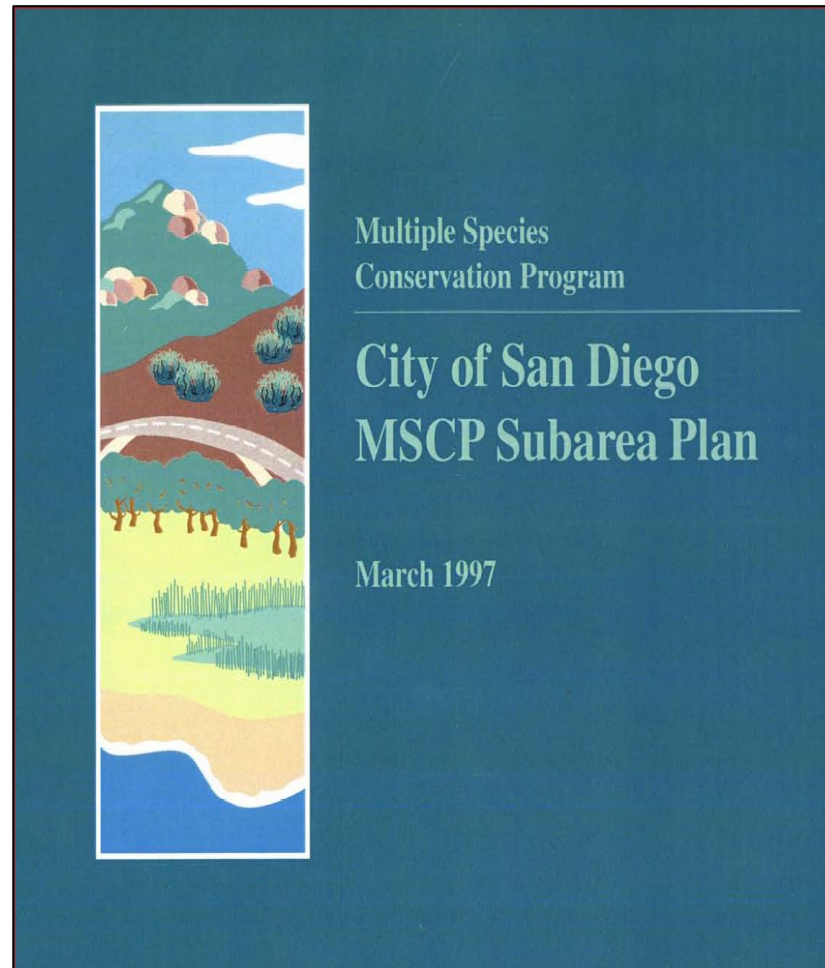
- Represents a "Hard line" preserve that delineates core biological resource areas and habitat linkages.
- Goal to conserve 52,727 acres by 2047
- Check out our MHPA interactive map on the webpage!

Vernal Pool Habitat Conservation Program

- Framework to protect, enhance, and restore vernal pool resources
- Covers seven vernal pool species
- Check out our Vernal Pool interactive map on the webpage!

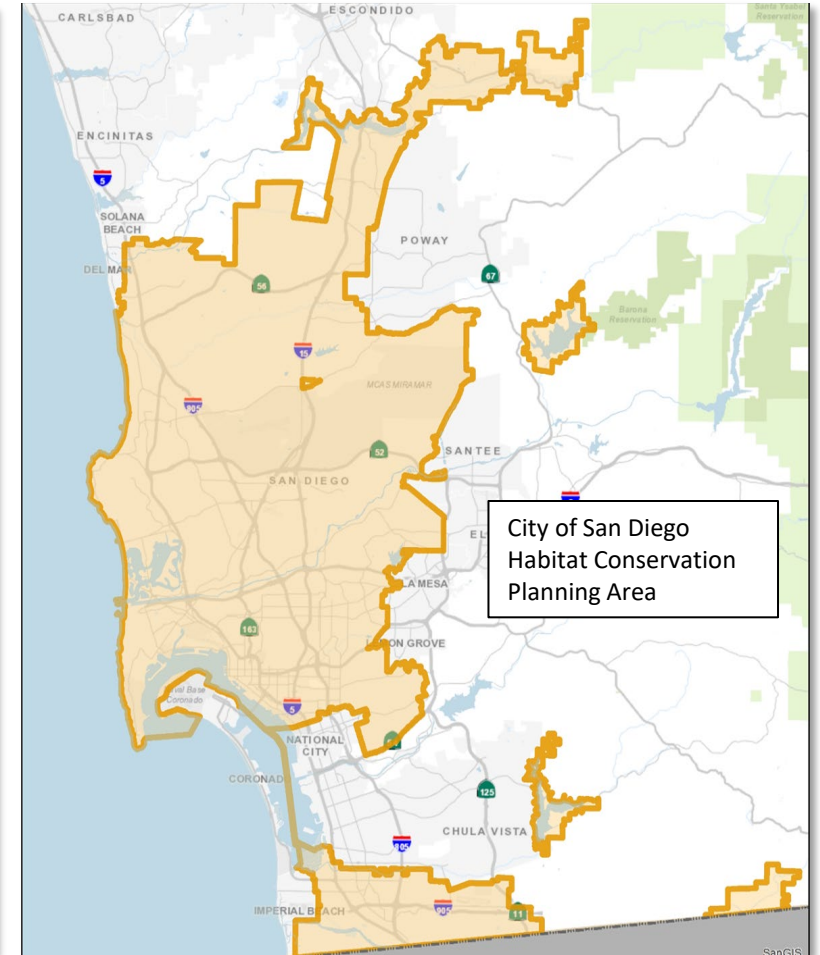
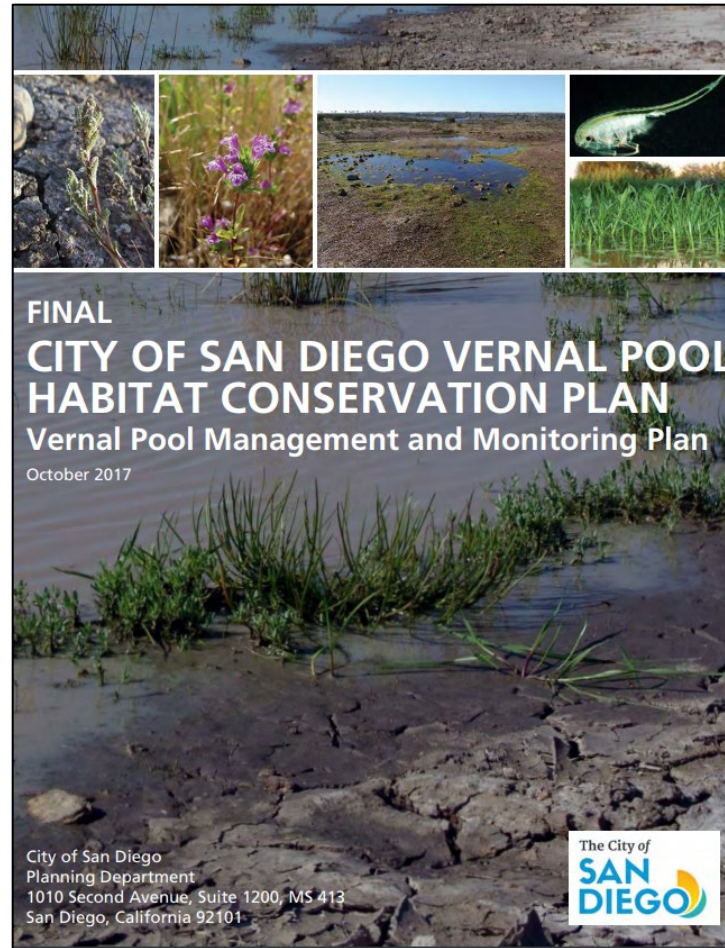
City of San Diego MSCP Subarea Plan

- **1997-2047**
 - MSCP 50-year permit
- **Covers 85 Species**
 - 46 Plants
 - 39 Animals



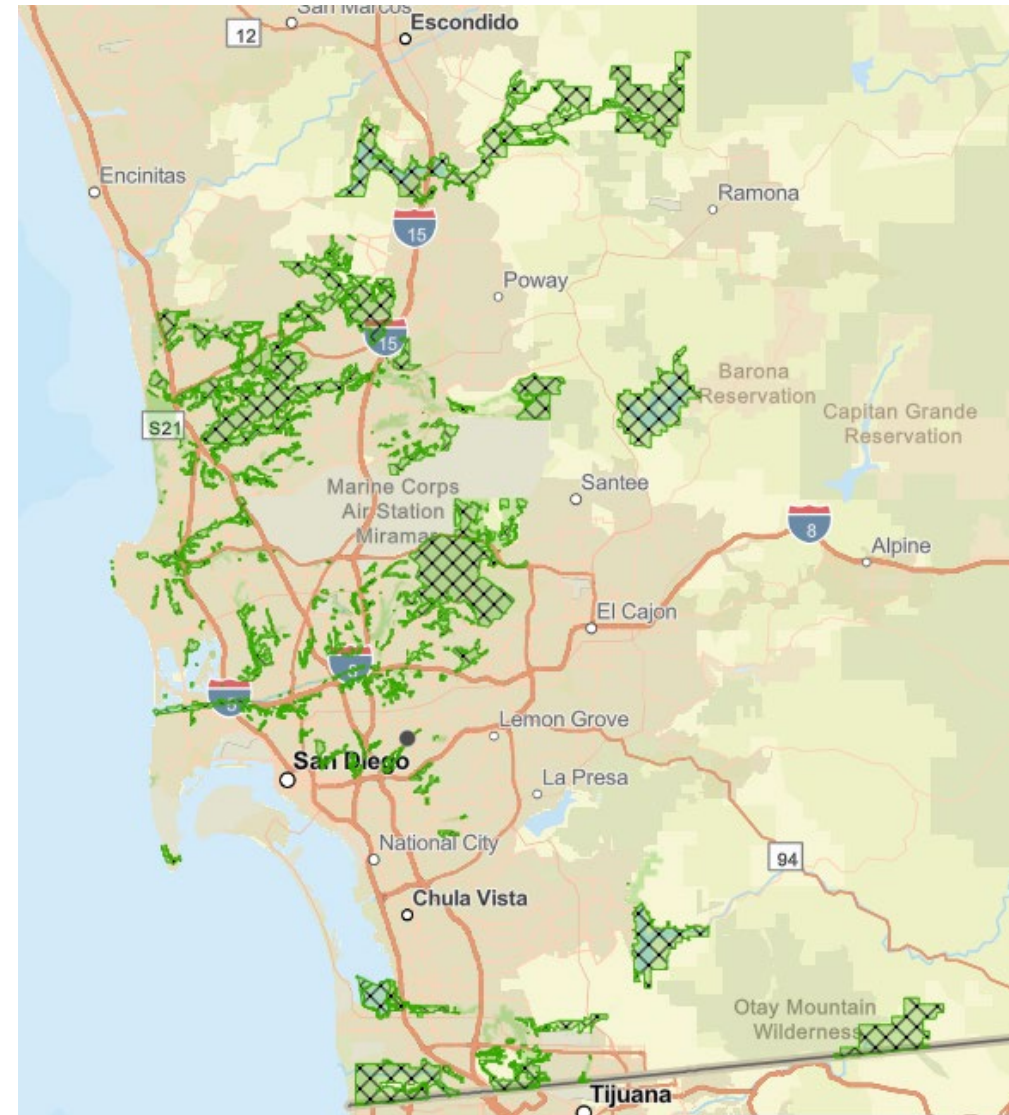
Vernal Pool Habitat Conservation Plan (VPHCP)

- **2018-2047**
 - VPHCP - 29 years
- **Covers 7 Species**
 - 5 Plants
 - 2 Animals

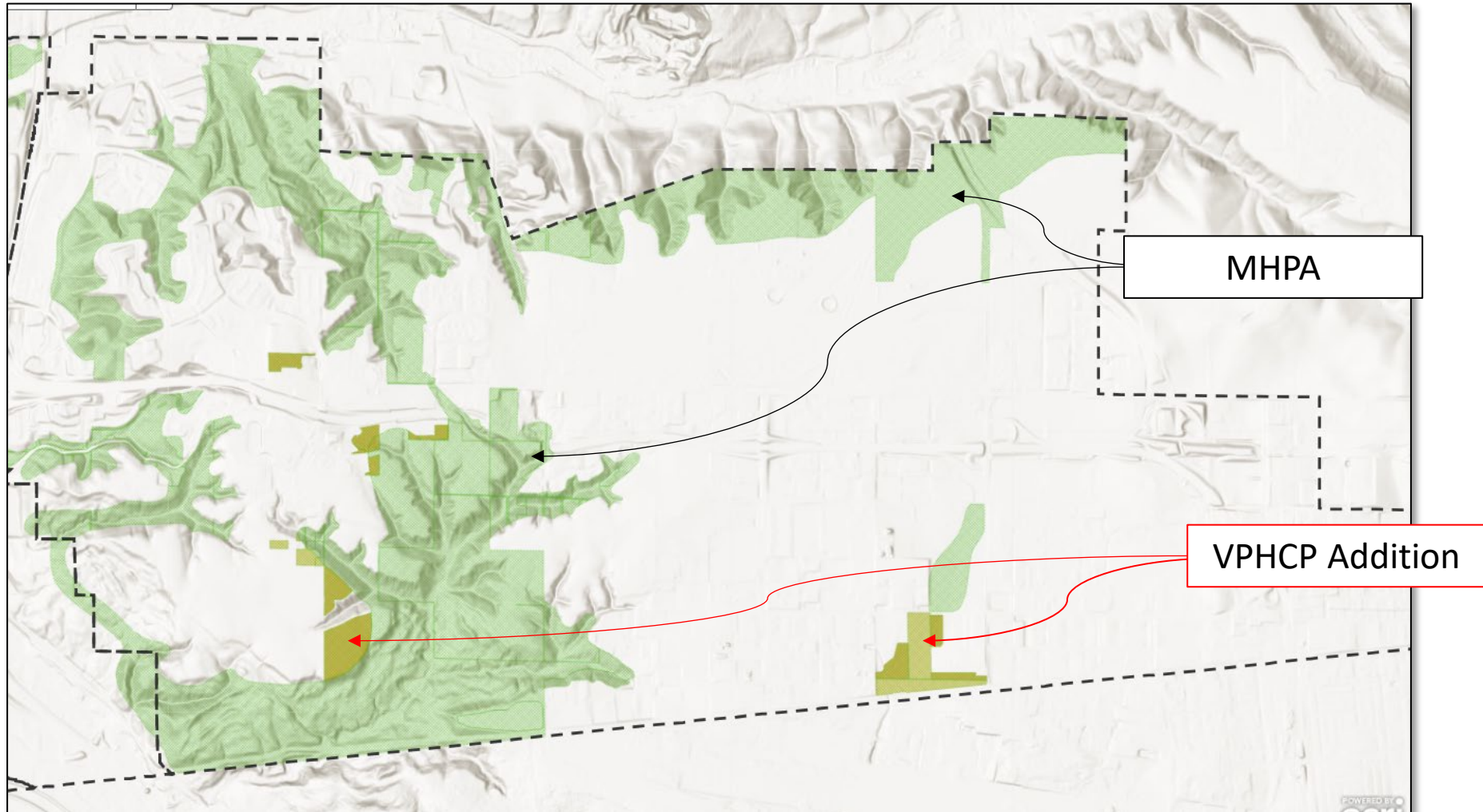


Multi-Habitat Planning Area (MHPA)

- “Hard line” preserve
- Focuses on conservation of core biological resource areas and wildlife corridors
- Allows limited development of uses compatible with the conservation goals of the MSCP



MHPA and VPHCP Conservation Areas



Municipal Code

- Environmentally Sensitive Lands Regulation §143.01
- Land Development Code: Biology Guidelines
- Brush Management Regulations
- Landscape Standards



What we do

- Project and Program Reviews
- Manage preserve assembly
- Wildlife Agency Coordination
- Regional Coordination
- Community Partnerships

SANDAG



Annual Reports: MSCP and VPHCP

MSCP

- Habitat gain and loss
- Habitat management activities
- Boundary line adjustments and corrections

VPHCP

- Habitat management activities
- Analysis of collected data
- Private management of vernal pools
- Species monitoring

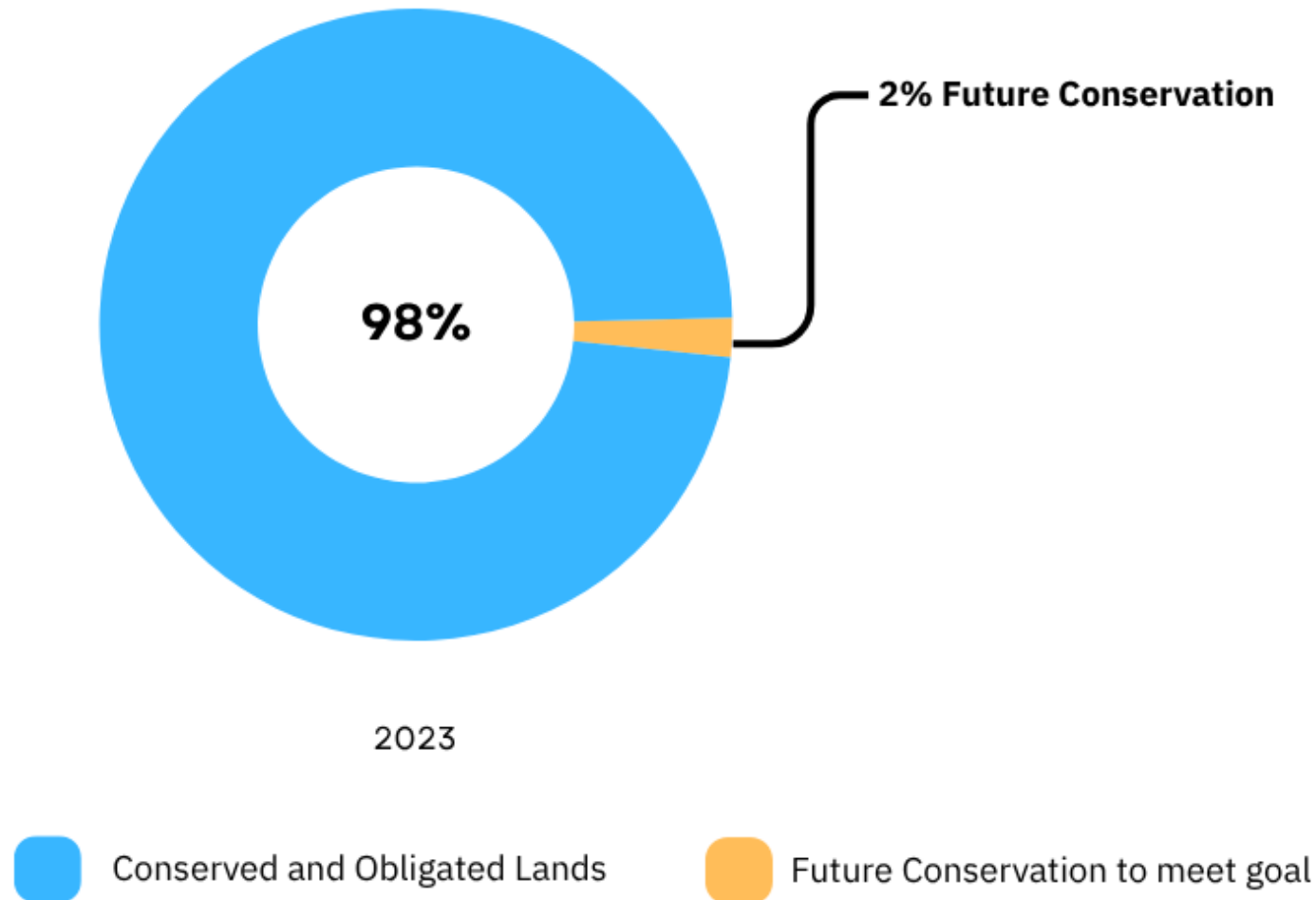


MSCP 25th Anniversary Workshop

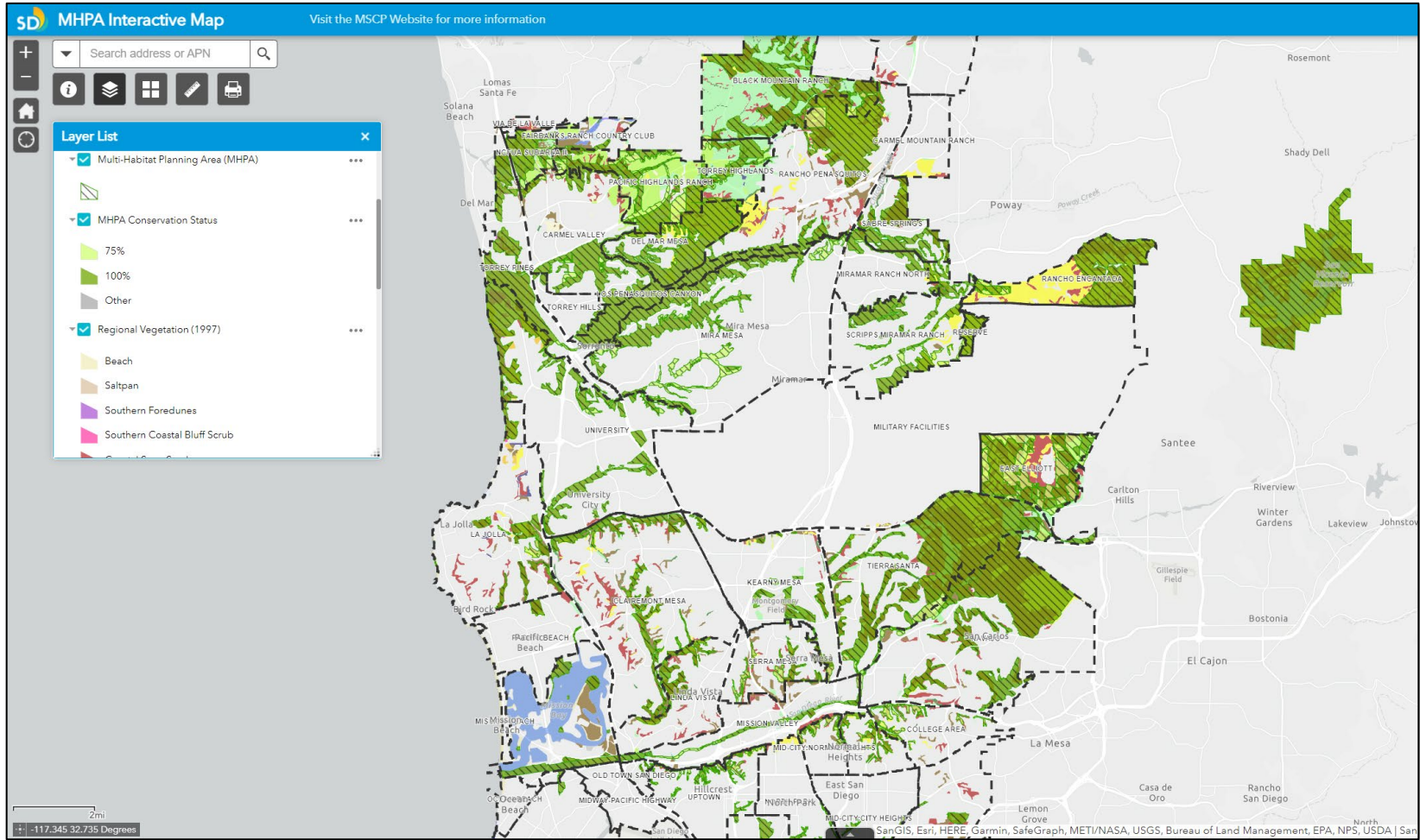
Habitat Acquisition



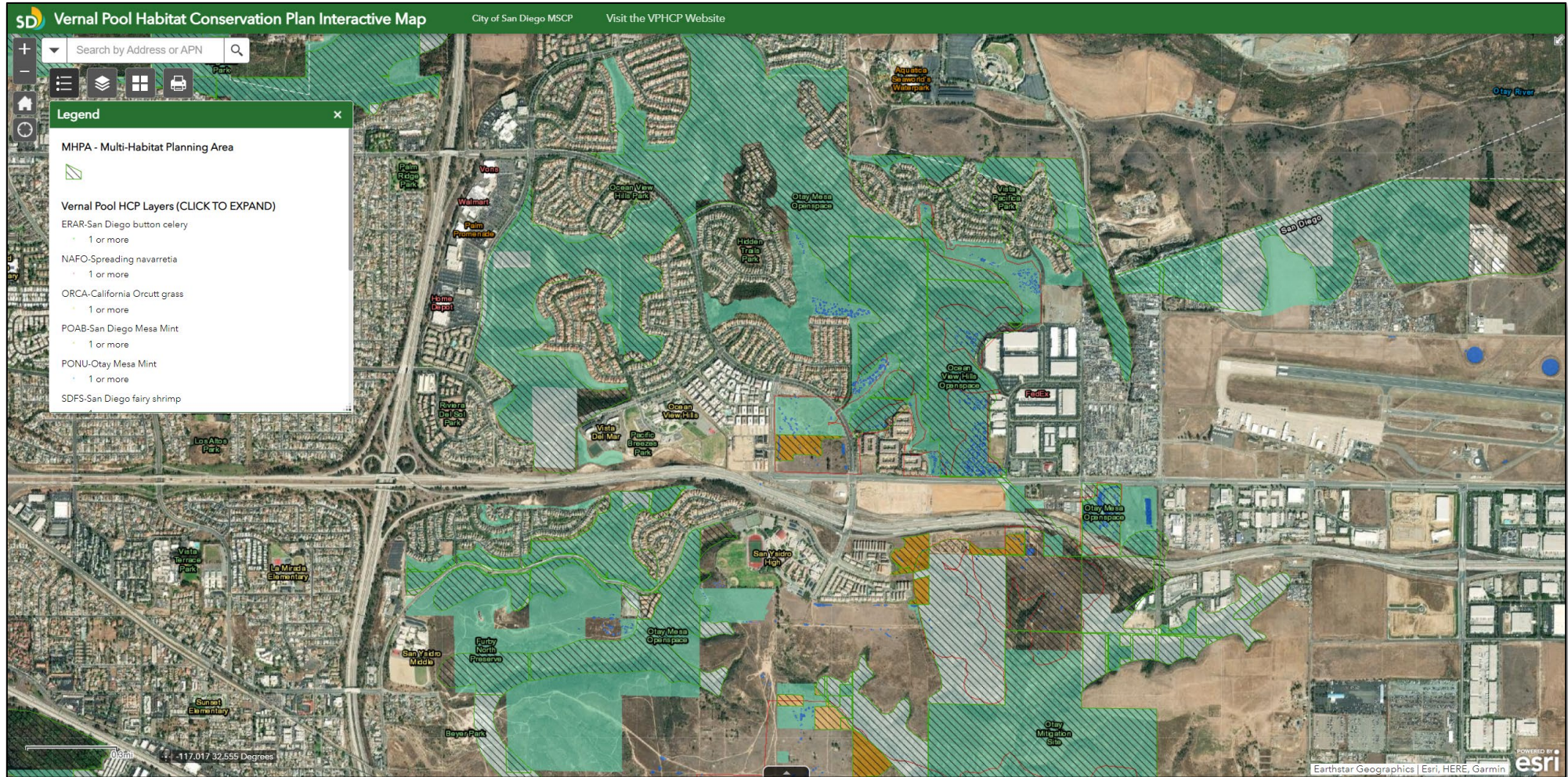
2023 MSCP Conservation Status



MHPA Interactive Map



VPHCP Interactive Map



2023 MSCP Management Highlights

City of San Diego Parks and Recreation Department

Open Space Division

March 12, 2024

[Introduction](#)

[Balboa Park Ranger District](#)

[Black Mountain Ranger District](#)

[Chollas Lake Ranger District](#)

[Citywide Open Space and Canyon...](#)

[Los Peñasquitos Ranger Distric...](#)

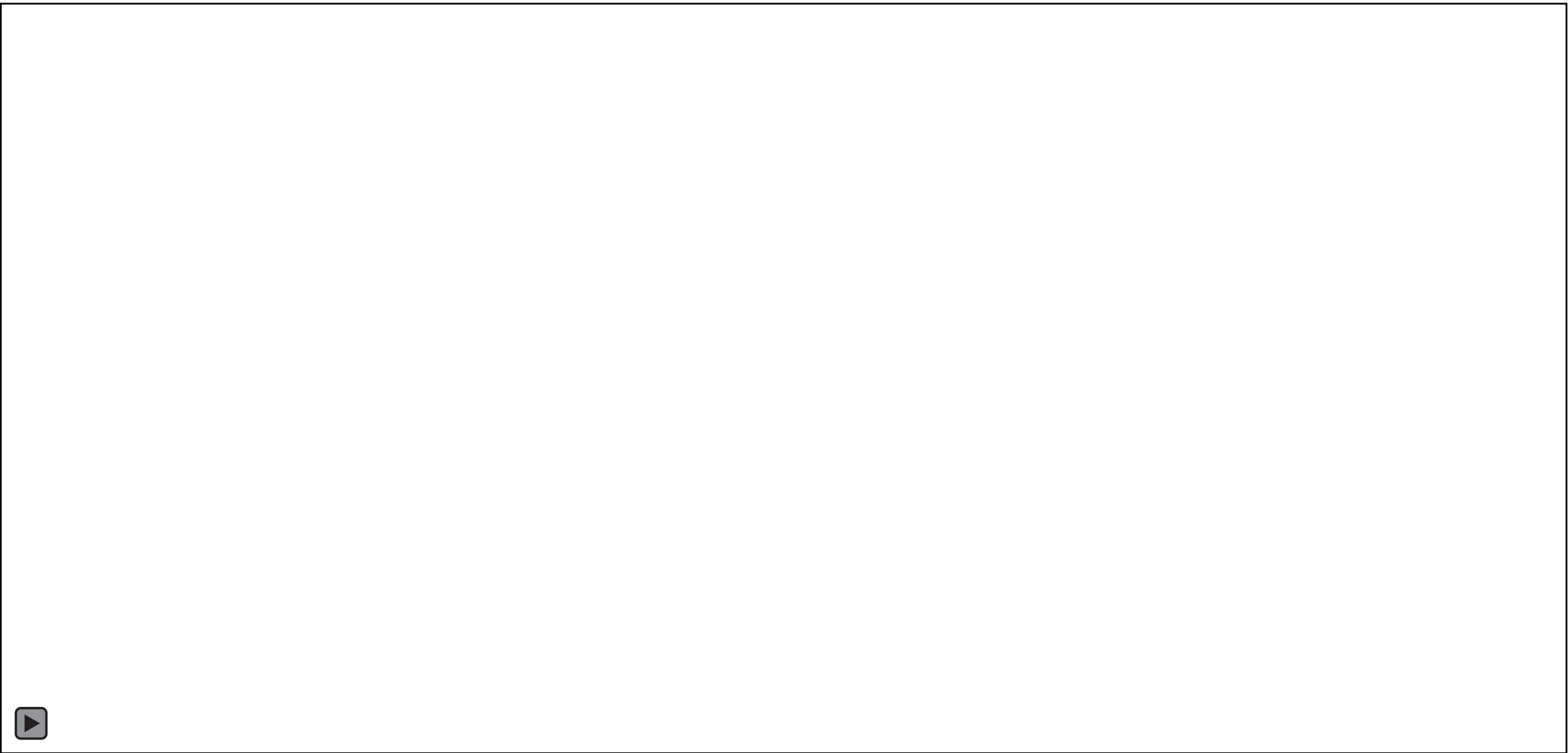
[Mission Bay and Shoreline Park...](#)

[Mis: →](#)

Introduction

The MULTIPLE SPECIES CONSERVATION PROGRAM (MSCP) can only be successful through informed management of conserved lands. Management in support of the City of San Diego's (City) MSCP Subarea Plan is performed by the City's Parks and Recreation, Public Utilities, and Environmental Services Departments. The City often partners with other public agencies, schools, environmental consultants, and non-profit groups to complete management tasks.





COLLECTION

Multiple Species Conservation Program

The Multiple Species Conservation Program (MSCP) is a comprehensive habitat conservation planning program which addresses multiple species habitat needs and the preservation of natural communities in southwestern San Diego County.

[Get started](#)

1 MSCP Covered Flora



2 MSCP Covered Wildlife





Thank You!

- Biodiverse SD Webpage: <https://www.sandiego.gov/planning/work/biodiversity>
- 2023 MSCP Annual Report: <https://www.sandiego.gov/planning/work/biodiversity#>
- 2022 MSCP Management Report: <https://webmaps.sandiego.gov/portal/apps/storymaps/collections/34ccb7e90be04e478ce9e3e6f58adbd1>
- MSCP Covered Species - Flora & Fauna: <https://webmaps.sandiego.gov/portal/apps/storymaps/collections/7fd42ba9d0064413993afff1f42b79e1>
- MHPA Interactive Mapping Tool: <https://sandiego.maps.arcgis.com/apps/webappviewer/index.html?id=11930ddbbfcb4335970ebe254c4e0c12>
- VPHCP Interactive Mapping Tool: <https://sandiego.maps.arcgis.com/apps/webappviewer/index.html?id=7cfd12d64af8424b986af45712933b88>
- Brush Management: <https://www.sandiego.gov/planning/work/brush-management>