

Pure Water San Diego Morena Conveyance South and Middle and Conveyance Bike Lanes Project Update

Clairemont Mesa Planning Group

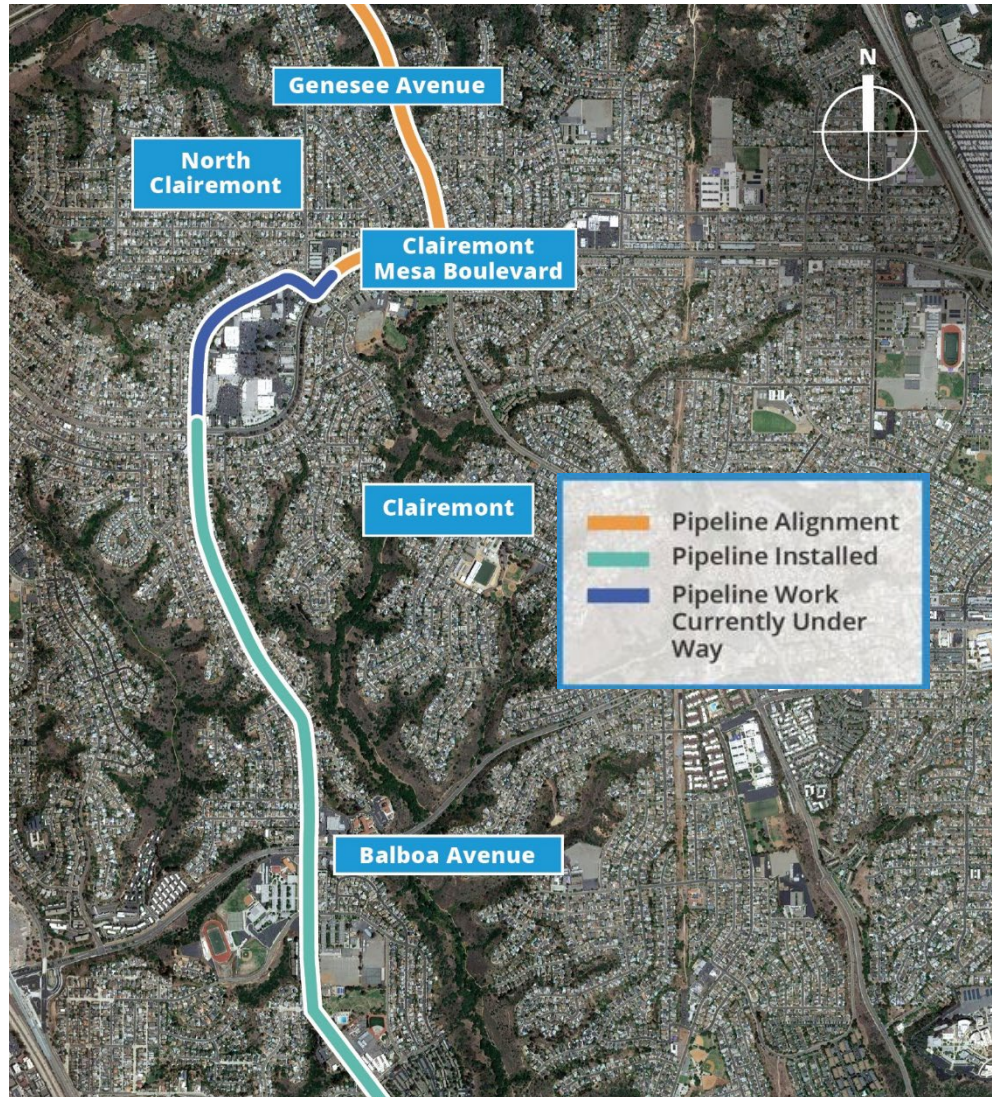
July 15, 2025

- Project includes

6.9 miles of both 48" Forcemain and 30" Brine

- Constructed

5 miles of both pipelines have been installed to date





Clairemont Dr. & Clairemont Mesa Blvd.

- 48" and 30" Pipeline Schedule:
 - Daytime pipeline work 7:30 am to 3:30 p.m.
 - Monday through Friday
 - Approximately two more weeks in this phase
 - Noise & dust during working hours
- Traffic Control:
 - One lane of traffic maintained
 - All businesses remain open in the area
 - Emergency responders access maintained at all times
- Next Milestone:
 - *Opening Clairemont Dr. and Clairemont Mesa Blvd. intersection all hours*



Pipeline Install @ Clairemont Dr. & Lakehurst Ave.





Pipeline Work in Bay Park

■ 48" and 30" Pipeline Schedule:

- Monday through Friday
- Daytime installation (8:00am – 4:00pm)
- Nighttime welding (4:00pm – 11:00pm)

■ Current 24 -hr Traffic Control:

- Chicago St. & Jellett St. – moving east on Jellett St.
- Approximately 4 -6 weeks of work per block, 24/7 street closure
- Alley and sidewalk access maintained at all times.
- Emergency responders access maintained at all times.

■ Next Milestone:

- *Night work within Clairemont Drive and Denver Street intersection*





Pipeline Install @ Chicago St. and Jellett St.



SD West Morena Blvd – Vega Street to Morena Blvd

- **48" and 30" Pipeline Schedule:**
 - Monday through Friday
 - Daytime installation (7:30am – 3:30pm)
 - Nighttime welding (3:30pm – 11:00pm)
- **Current 24 -hr Traffic Control:**
 - 24-hour northbound closure on W. Morena Blvd between Vega Street and Morena Blvd.
 - All businesses remain open in the area
 - Emergency responders access maintained at all times
- **Next Milestone:**
 - *Crews will continue northbound on West Morena Blvd, then turn east onto Milton Street*

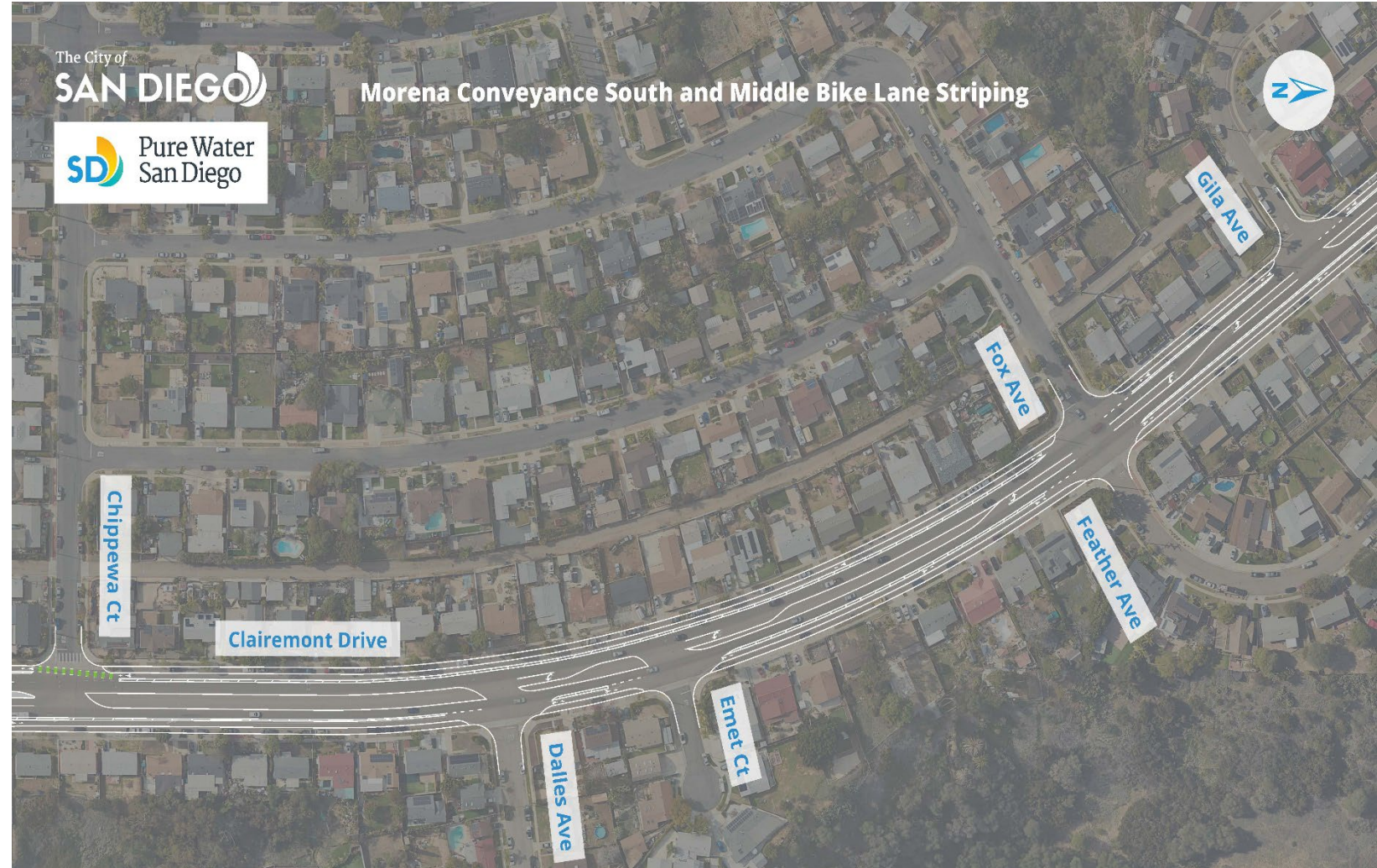




Paving and Bike Lanes

■ Final Paving and Bike Lanes:

- 6.9 miles will receive final paving in 8 -phases
 - After pipeline and street improvements are completed
- **Phase 2**- Clairemont Dr from Iroquois Ave to Balboa
 - Completed June 2025
- **Phase 3**- Balboa to Lakehurst
 - Estimated to start August 2024
- New Bike Lanes will be implemented after paving
 - City Mobility Design Team started coordination with Community back in 2019





Clairemont Drive to Clairemont Mesa Boulevard



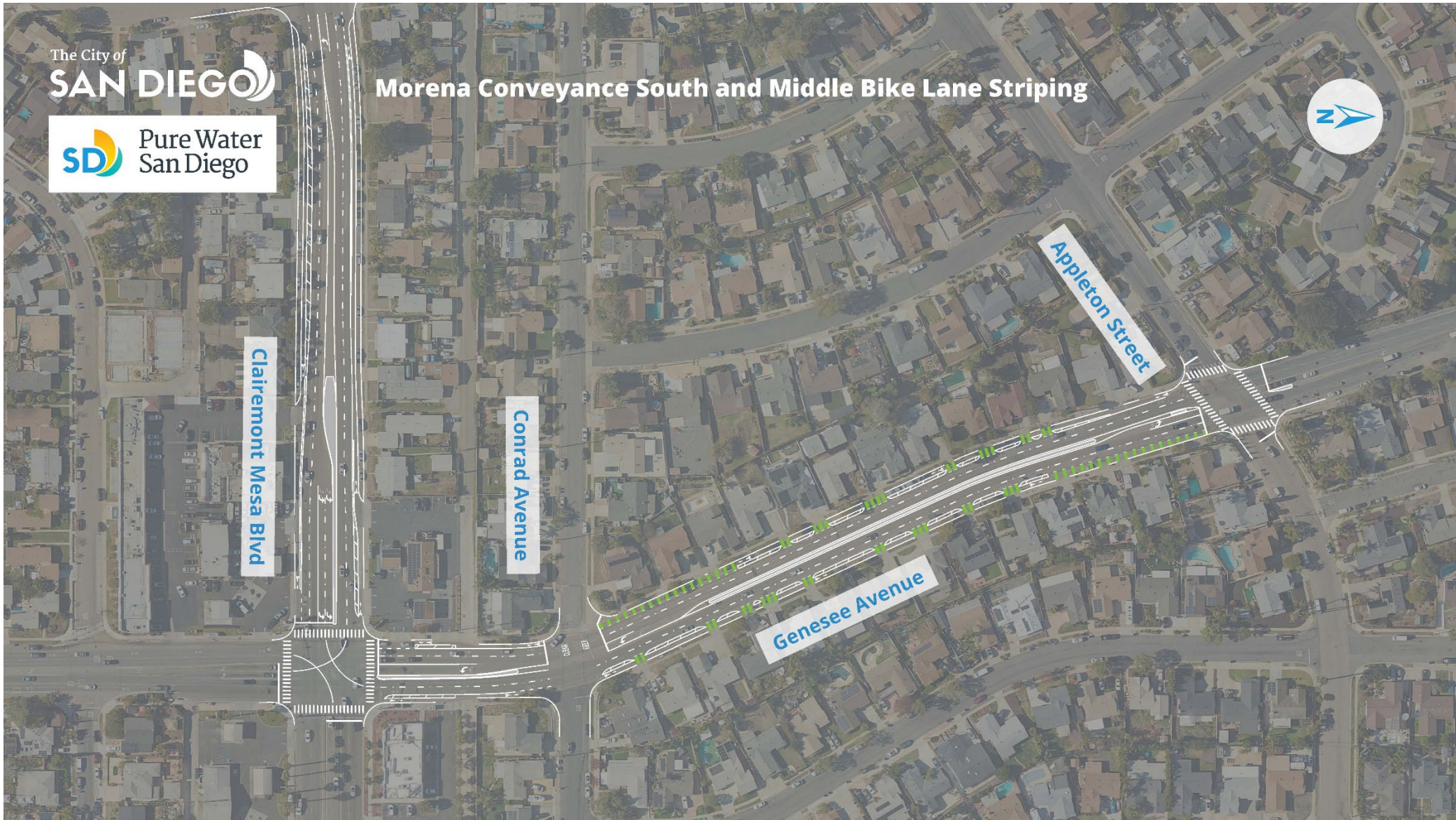


Clairemont Mesa Boulevard





Clairemont Mesa Boulevard & Genesee Avenue





Website:
purewatersd.org



Phone Line:
833-667-7973
833-MOR-PWSD



Social Media:
[@purewatersd](https://twitter.com/purewatersd)

purewatersd@sandiego.gov

Sign Up for Project Emails



■ Work to be completed before paving:

- 48" and 30" Pipeline installation
- Installation of pipeline appurtenances
- Both Pipelines must Pass Testing
- 167 ADA Curb Ramps upgrades
 - *May also contain electrical upgrades*
- Additional Concrete Work
 - *Medians, sidewalk panels, cross gutters*

■ Final Paving and Bike Lanes:

- 6.9 miles alignment will be paved in 8 phases
- Phase 1 - Clairemont Drive from Erie St to Iroquois Ave
 - Started February 2025
- New Bike Lanes will be implemented after final paving
- Coordinated with Community since 2019
 - September 2019 Subcommittee
 - January 2020 Subcommittee
 - District 2 Budget Request Memo for Separated Bikeways FY22

Bicycle Network Context



Cross Section

