



Date of Notice: August 15, 2025

NOTICE OF RIGHT TO APPEAL ENVIRONMENTAL DETERMINATION

SPECIAL EVENTS DEPARTMENT

PROJECT NAME: Special Event Permit - San Diego Bayfair

COMMUNITY PLAN AREA: Mission Bay Park

COUNCIL DISTRICT: 2

LOCATION: Mission Bay Park, East & West Vacation Island, Crown Point & Fiesta Island & Fiesta Bay

PROJECT DESCRIPTION: Special Event Permit to allow for a 3-day powerboat racing event in Mission Bay Park, East and West Vacation Island, Crown Point & Fiesta Island & Fiesta Bay on September 12-14, 2025. The event would include hydroplanes, Grand Prix, 5 liter and limited classes of boats, jet ski and hydro games, car & motorcycle show, merchandise, food, food trucks, onsite food preparation, vendors, alcohol, beer gardens, RV camping, tents/canopies, stages, sound amplification, music, announcements, generators, fencing and/or barriers, tables, chairs, drones, portable restrooms, and recycle/trash containers. Noise associated with the event activities and set-up/dismantling would occur from 5 AM on September 8, 2025, until 7 PM on September 16, 2025. Set-up would occur over 7 days from 5 AM to 7 PM on September 8-10, 2025, from 5 AM until 11:55 PM on September 11, 2025, from 6 AM until 9 AM on September 12-14, 2025. The 3-day event would occur from 7 AM to 10 PM on September 12-13, 2025, and from 7 AM until 7 PM on September 14, 2025. Dismantling would occur from 6 AM to 11 PM on September 15, 2025, and from 6 AM to 7 PM on September 16, 2025.

Parking lot closures would occur and would include the following: Ski Beach parking lot, West and East Vacation Island parking lot, Model Yacht Pond parking lot, North Cove, and Crown Point parking lots, on September 12, 2025, at 12 AM to September 15, 2025, at 9 AM.

ENTITY CONSIDERING PROJECT APPROVAL: City of San Diego

ENVIRONMENTAL DETERMINATION: Categorically exempt from CEQA pursuant to State CEQA Guidelines Section 15301 (Existing Facilities); Section 15304 (Minor Alterations to Land); Section 15311 (Accessory Structures).

ENTITY MAKING ENVIRONMENTAL DETERMINATION: City of San Diego Mayor-Appointed Designee

STATEMENT SUPPORTING REASON FOR ENVIRONMENTAL DETERMINATION: The City of San Diego conducted an environmental review that determined the project would not have the potential for causing a significant effect on the environment pursuant to State CEQA Guidelines Section(s): Section 15301 (Existing Facilities) which allows for the operation, repair, maintenance, permitting, leasing,

licensing or minor alterations of existing public or private structures or facilities involving negligible or no expansion of use; Section 15304 (Minor Alterations to Land) which allows for minor, temporary use of land that has negligible or no permanent effects on the environment; Section 15311 (Accessory Structures) which allows for construction, or placement of minor structures accessory to existing commercial, industrial, or institutional facilities, including, but not limited to, temporary use items in publicly owned facilities or other facilities designated for public use; and where the exceptions listed in CEQA Guidelines Section 15300.2 would not apply in that no cumulative impacts were identified; no significant effects on the environment were identified; the project is not adjacent to a scenic highway; no historical resources would be affected by the action; and the project was not identified on a list of hazardous waste sites pursuant to Section 65962.5 of the Government Code.

CITY CONTACT:

McKinna Dartez Chrismer

MAILING ADDRESS:

1200 Third Avenue, Suite 1326, MS 56A

San Diego, CA 92101

EMAIL ADDRESS:

mdartez@san Diego.gov

On August 15, 2025, the City of San Diego made the above-referenced environmental determination pursuant to the California Environmental Quality Act (CEQA). This determination is appealable to the City Council. If you have any questions about this determination, contact the City Contact listed above.

Applications to appeal CEQA determination to the City Council must be filed with the Office of the Clerk within 5 business days from the date of the posting of this Notice (**August 22, 2025**).

Appeal procedures are described in Information Bulletin 505

(<https://www.sandiego.gov/sites/default/files/dsdib505.pdf>). Appeals to the City Clerk must be filed via email or in-person as follows:

1. Appeals filed via E-mail: The Environmental Determination Appeal Application Form [DS-3031](#) can be obtained at: <https://www.sandiego.gov/sites/default/files/legacy/development-services/pdf/industry/forms/ds3031.pdf>. Send the completed appeal application form (including grounds for appeal and supporting documentation in pdf format) by email to Hearings1@san Diego.gov by 5:00p.m. on the last day of the appeal period; your email appeal will be acknowledged within 24 business hours. You must separately mail the appeal fee by check payable to the City Treasurer to: City Clerk/Appeal, MS 2A, 202 C Street, San Diego, CA 92101. The appeal filing fee must be United States Postal Service (USPS) postmarked) before or on the final date of the appeal.
2. Appeals filed In-Person: The Environmental Determination Appeal Application Form [DS-3031](#) can be obtained at: <https://www.sandiego.gov/sites/default/files/legacy/development-services/pdf/industry/forms/ds3031.pdf>. Bring the fully completed appeal application DS-3031 (including grounds for appeal and supporting documentation) to the City Administration Building— Public Information Counter (Open 8:00am to 5:00pm Monday through Friday excluding City approved holidays), 1st Floor Lobby, located at 202 C Street, San Diego, CA 92101, by 5:00pm on the last day of the appeal period. The completed appeal form shall include the required appeal fee, with a check payable to: City Treasurer.

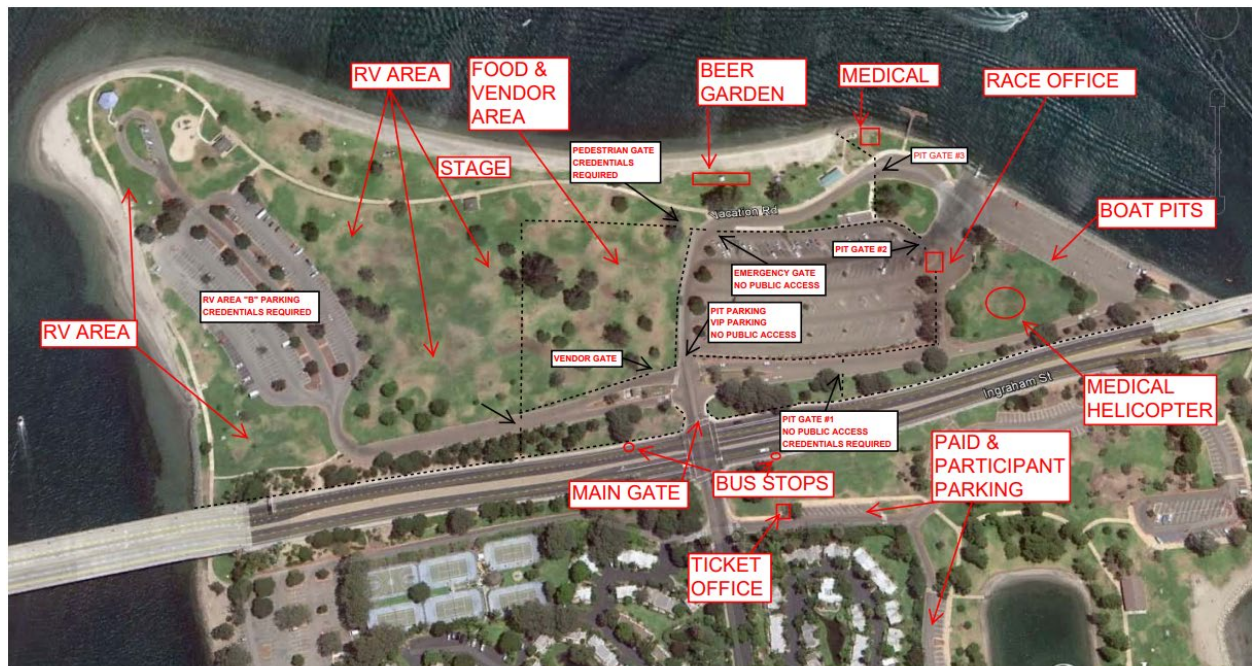
The appeal application can also be obtained from the City Clerk, 202 'C' Street, 1st Floor Lobby, San Diego, CA 92101. This information will be made available in alternative formats upon request.

POSTED ON THE CITY'S CEQA WEBSITE

POSTED: August 15, 20235

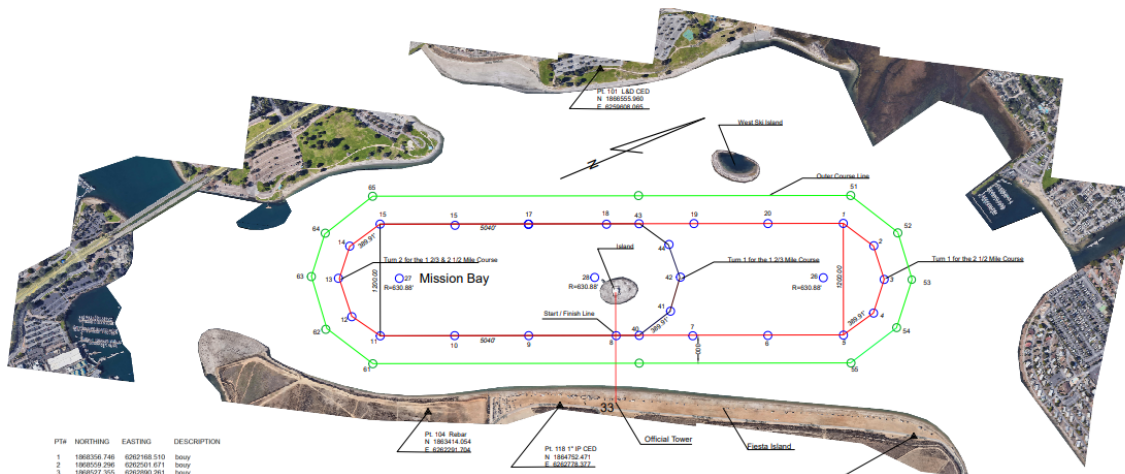
REMOVED: August 22, 2025

POSTED: McKinna Dartez Chrismer



SKI BEACH MASTER MAP





PT#	NORTHING	EASTING	DESCRIPTION
1	1860558.748	6262168.510	buoy
2	1860558.296	6262168.871	buoy
3	1860527.355	6262090.261	buoy
4	1860527.355	6262090.261	buoy
5	1860527.355	6262090.261	buoy
6	1860527.355	6262090.261	buoy
7	1860527.355	6262090.261	buoy
8	1860527.355	6262090.261	buoy
9	1860527.355	6262090.261	buoy
10	1860527.355	6262090.261	buoy
11	1860527.355	6262090.261	buoy
12	1860527.355	6262090.261	buoy
13	1860527.355	6262090.261	buoy
14	1860527.355	6262090.261	buoy
15	1860527.355	6262090.261	buoy
16	1860527.355	6262090.261	buoy
17	1860527.355	6262090.261	buoy
18	1860527.355	6262090.261	buoy
19	1860527.355	6262090.261	buoy
20	1860527.355	6262090.261	buoy
21	1860527.355	6262090.261	buoy
22	1860527.355	6262090.261	buoy
23	1860527.355	6262090.261	buoy
24	1860527.355	6262090.261	buoy
25	1860527.355	6262090.261	buoy
26	1860527.355	6262090.261	buoy
27	1860527.355	6262090.261	buoy
28	1860527.355	6262090.261	buoy
29	1860527.355	6262090.261	buoy
30	1860527.355	6262090.261	buoy
31	1860527.355	6262090.261	buoy
32	1860527.355	6262090.261	buoy
33	1860527.355	6262090.261	buoy
34	1860527.355	6262090.261	buoy
35	1860527.355	6262090.261	buoy
36	1860527.355	6262090.261	buoy
37	1860527.355	6262090.261	buoy
38	1860527.355	6262090.261	buoy
39	1860527.355	6262090.261	buoy
40	1860527.355	6262090.261	buoy
41	1860527.355	6262090.261	buoy
42	1860527.355	6262090.261	buoy
43	1860527.355	6262090.261	buoy
44	1860527.355	6262090.261	buoy
45	1860527.355	6262090.261	buoy
46	1860527.355	6262090.261	buoy
47	1860527.355	6262090.261	buoy
48	1860527.355	6262090.261	buoy
49	1860527.355	6262090.261	buoy
50	1860527.355	6262090.261	buoy
51	1860527.355	6262090.261	buoy
52	1860527.355	6262090.261	buoy
53	1860527.355	6262090.261	buoy
54	1860527.355	6262090.261	buoy
55	1860527.355	6262090.261	buoy
56	1860527.355	6262090.261	buoy
57	1860527.355	6262090.261	buoy
58	1860527.355	6262090.261	buoy
59	1860527.355	6262090.261	buoy
60	1860527.355	6262090.261	buoy
61	1860527.355	6262090.261	buoy
62	1860527.355	6262090.261	buoy
63	1860527.355	6262090.261	buoy
64	1860527.355	6262090.261	buoy
65	1860527.355	6262090.261	buoy
66	1860527.355	6262090.261	buoy
67	1860527.355	6262090.261	buoy
68	1860527.355	6262090.261	buoy
69	1860527.355	6262090.261	buoy
70	1860527.355	6262090.261	buoy
71	1860527.355	6262090.261	buoy
72	1860527.355	6262090.261	buoy
73	1860527.355	6262090.261	buoy
74	1860527.355	6262090.261	buoy
75	1860527.355	6262090.261	buoy
76	1860527.355	6262090.261	buoy
77	1860527.355	6262090.261	buoy
78	1860527.355	6262090.261	buoy
79	1860527.355	6262090.261	buoy
80	1860527.355	6262090.261	buoy
81	1860527.355	6262090.261	buoy
82	1860527.355	6262090.261	buoy
83	1860527.355	6262090.261	buoy
84	1860527.355	6262090.261	buoy
85	1860527.355	6262090.261	buoy
86	1860527.355	6262090.261	buoy
87	1860527.355	6262090.261	buoy
88	1860527.355	6262090.261	buoy
89	1860527.355	6262090.261	buoy
90	1860527.355	6262090.261	buoy
91	1860527.355	6262090.261	buoy
92	1860527.355	6262090.261	buoy
93	1860527.355	6262090.261	buoy
94	1860527.355	6262090.261	buoy
95	1860527.355	6262090.261	buoy
96	1860527.355	6262090.261	buoy
97	1860527.355	6262090.261	buoy
98	1860527.355	6262090.261	buoy
99	1860527.355	6262090.261	buoy
100	1860527.355	6262090.261	buoy
101	1860527.355	6262090.261	buoy
102	1860527.355	6262090.261	buoy
103	1860527.355	6262090.261	buoy
104	1860527.355	6262090.261	buoy
105	1860527.355	6262090.261	buoy
106	1860527.355	6262090.261	buoy
107	1860527.355	6262090.261	buoy
108	1860527.355	6262090.261	buoy
109	1860527.355	6262090.261	buoy
110	1860527.355	6262090.261	buoy
111	1860527.355	6262090.261	buoy
112	1860527.355	6262090.261	buoy
113	1860527.355	6262090.261	buoy
114	1860527.355	6262090.261	buoy
115	1860527.355	6262090.261	buoy
116	1860527.355	6262090.261	buoy
117	1860527.355	6262090.261	buoy
118	1860527.355	6262090.261	buoy
119	1860527.355	6262090.261	buoy
120	1860527.355	6262090.261	buoy
121	1860527.355	6262090.261	buoy
122	1860527.355	6262090.261	buoy
123	1860527.355	6262090.261	buoy
124	1860527.355	6262090.261	buoy
125	1860527.355	6262090.261	buoy
126	1860527.355	6262090.261	buoy
127	1860527.355	6262090.261	buoy
128	1860527.355	6262090.261	buoy
129	1860527.355	6262090.261	buoy
130	1860527.355	6262090.261	buoy
131	1860527.355	6262090.261	buoy
132	1860527.355	6262090.261	buoy
133	1860527.355	6262090.261	buoy
134	1860527.355	6262090.261	buoy
135	1860527.355	6262090.261	buoy
136	1860527.355	6262090.261	buoy
137	1860527.355	6262090.261	buoy
138	1860527.355	6262090.261	buoy
139	1860527.355	6262090.261	buoy
140	1860527.355	6262090.261	buoy
141	1860527.355	6262090.261	buoy
142	1860527.355	6262090.261	buoy
143	1860527.355	6262090.261	buoy
144	1860527.355	6262090.261	buoy
145	1860527.355	6262090.261	buoy
146	1860527.355	6262090.261	buoy
147	1860527.355	6262090.261	buoy
148	1860527.355	6262090.261	buoy
149	1860527.355	6262090.261	buoy
150	1860527.355	6262090.261	buoy
151	1860527.355	6262090.261	buoy
152	1860527.355	6262090.261	buoy
153	1860527.355	6262090.261	buoy
154	1860527.355	6262090.261	buoy
155	1860527.355	6262090.261	buoy

About this Chart:

This is a composite of several images copied from Google Earth of Mission Bay, San Diego, California and rectified to within 3 feet + or -. The area was placed on the California, Zone 6 Lambert coordinate system. The water area has been eliminated from the images, except where water hazards exist, to facilitate the visual drawing of the race courses. This area is tidal affected. The race courses were copied from a map drawn by the Development Services Department of the City of San Diego and although modified, are positioned very closely to the original coordinates. The points #103 and #104 were also copied from the map. No other points were available near Fiesta Island and the Official Tower. See the Surveyor's certificate on how the course will be set. The exact location of the Official Tower from the course line is not known and may vary from year to year but will be set on a line 90 degrees to the course line as shown. The 2.5 Mile course is for Unlimited Hydroplanes. The 1.25 mile course is for Limited Inboard, Outboard, and OPC Classes. These two courses are designed to be set by or under the direction of a Professional Licensed Land Surveyor and to be certified by same as being the distance or longer as shown on this Chart for American Power Boat Association and World Records.

Surveyor Certificate:

I, John R. Butcher, Professional Land Surveyor, certify that this chart of Mission Bay, San Diego, California, is a true representation of the area shown on the 2.5 Mile Gold Cup Racecourse, September 1978. Coordinates shown herein are CCS 83, 1993.35 epoch.

The courses shall be set by or under the direct supervision of a California Licensed Land Surveyor using the coordinates of the buoys shown. The methods shall be GPS real time kinematic to ensure accurate buoy locations. A base and rover or VRS system and rover will be used for GPS corrections. "Handheld" non corrected GPS devices are not acceptable for positioning of buoys. Buoys shall be anchored by sufficient weight to keep the buoy from moving away from its proper location from wind, tidal or water current environmental changes. This area is subject to tidal water movement and buoys shall have a method of constant adjustment, i.e., pulley and counterweight, when water rises and falls during the day. The course shall be as-built after all buoys have been set to certify the distances required have been met. Re-certification is needed for all records.



DATE	20 Aug 2004
DESIGNED BY	
DRAWN BY	
CHECKED BY	
APPROVED BY	
SCALE	1" = 400'
THUNDERBOATS UNLIMITED CLUB INC. #74 Presents Mission Bay San Diego, CA 2 1/2 Mile & 1 2/3 Mile Boat Racing Record Courses Sanctioned by American Power Boat Association	