
Appendix H

Negative Cultural Resources Letter Report

October 3, 2023

12622

Green Phair Scripps Partners LLC
Contact: Jeff Phair
945 East J Street
Chula Vista, California, 91910

Subject: Negative Cultural Resources Letter Report for the Renzulli Estates Project, City of San Diego, California

Dear Mr. Phair,

This letter documents the cultural resources inventory conducted by Dudek for the Renzulli Estates Project (Project), located in the Scripps Miramar Ranch Community Planning Area, in the City of San Diego, California (Figure 1). The City of San Diego (City) is the lead agency responsible for compliance with the California Environmental Quality Act (CEQA). In accordance with CEQA and the City of San Diego Historical Resources Guidelines, Dudek performed a cultural resources inventory for the entire area of potential effect (APE). The APE consists of the entire 40.56-acre parcel (Assessor's Parcel Number [APN] 319-020-04-00) (Figure 2).

Brian F. Smith and Associates, Inc. (BFSA) conducted a cultural resources Due Diligence Study for the entire Project APE in 2019 (Smith 2019). The study is summarized herein this letter report.

A records search was conducted by BFSA at the South Coastal Information Center (SCIC) for the proposed Project and a one-mile radius search buffer around the Project. The records search did not identify any cultural resources within the Project APE; however, 20 cultural resources were identified within the one-mile search radius buffer. Dudek requested a Native American Heritage Commission (NAHC) Sacred Lands File (SLF) search. The SLF search did not identify cultural resources for the Project. An intensive pedestrian survey of the Project APE did not identify any archaeological or built environment resources. The Project APE has been disturbed by previous residential grading.

Based on the current condition of the Project APE, the negative survey and records search results, and undocumented fill being present throughout the Project APE, archaeological and Native American monitoring is not recommended for the proposed Project. The Project is unlikely to impact undiscovered cultural resources. In the unlikely event that cultural resources are encountered during exposure of subsurface soils, ground-disturbing work should be immediately halted in the area and a qualified archaeologist should be retained to evaluate the resources.

1 Project Description and Location

The Project site is approximately 40.56-acres and is located 11495 Cypress Canyon Road (APN 319-020-04-00) in the northeast section of the City of San Diego, California, south of Scripps Poway Parkway and north of Spring Canyon Road (Figure 1). The Project site falls within Sections 27 of Township 14 South, Range 2 West of the Poway, California 7.5-minute U.S. Geological Survey Topographic Quadrangle Map (Figure 2).

The proposed Project consists of the demolition of an existing residence (and all associated structures) on the Project site and subsequent clearing and grading to create suitable pads for the construction of 100 single-family homes and 12 multi-family units. The Project also includes associated roads, sidewalks, and landscaping. The area of potential effect (APE) for the project consists of the entire 40.56 -acre parcel (Figure 2).

2 Regulatory Framework

2.1 The California Register of Historic Resources (Public Resources Code section 5020 et seq.)

Under CEQA, the term “historical resource” includes but is not limited to “any object, building, structure, site, area, place, record, or manuscript which is historically or archaeologically significant, or is significant in the architectural, engineering, scientific, economic, agricultural, educational, social, political, military, or cultural annals of California” (California Public Resources Code section 5020.1(j)). In 1992, the California legislature established CRHR “to be used by state and local agencies, private groups, and citizens to identify the state’s historical resources and to indicate what properties are to be protected, to the extent prudent and feasible, from substantial adverse change” (California Public Resources Code section 5024.1(a)). A resource is eligible for listing in the CRHR if the State Historical Resources Commission determines that it is a significant resource and that it meets any of the following National Register of Historic Places (NRHP) criteria:

- Associated with events that have made a significant contribution to the broad patterns of California’s history and cultural heritage.
- Associated with the lives of persons important in our past.
- Embodies the distinctive characteristics of a type, period, region, or method of construction, or represents the work of an important creative individual, or possesses high artistic values.
- Has yielded, or may be likely to yield, information important in prehistory or history.

(California Public Resources Code section 5024.11.) Resources less than 50 years old are not considered for listing in the CRHR, but may be considered if it can be demonstrated that sufficient time has passed to understand the historical importance of the resource (see 14 CCR, section 4852(d)(2)).

The CRHR protects cultural resources by requiring evaluations of the significance of prehistoric and historic resources. The criteria for the CRHR are nearly identical to those for the NRHP, and properties listed or formally designated as eligible for listing on the NRHP are automatically listed on the CRHR, as are the state landmarks and points of interest. The CRHR also includes properties designated under local ordinances or identified through local historical resource surveys. The State Historic Preservation Officer maintains the CRHR.

2.2 Native American Historic Cultural Sites (California Public Resources Code section 5097 et seq.)

State law addresses the disposition of Native American burials in archaeological sites and protects such remains from disturbance, vandalism, or inadvertent destruction; establishes procedures to be implemented if Native

American skeletal remains are discovered during construction of a project; and establishes the NRHC to resolve disputes regarding the disposition of such remains. In addition, the Native American Historic Resource Protection Act makes it a misdemeanor punishable by up to 1 year in jail to deface or destroy an Indian historic or cultural site that is listed or may be eligible for listing in the CRHR.

2.3 California Native American Graves Protection and Repatriation Act

The California Native American Graves Protection and Repatriation Act (California Repatriation Act), enacted in 2001, required all state agencies and museums that receive state funding and that have possession or control over collections of human remains or cultural items, as defined, to complete an inventory and summary of these remains and items on or before January 1, 2003, with certain exceptions. The California Repatriation Act also provides a process for the identification and repatriation of these items to the appropriate tribes.

2.4 California Environmental Quality Act

As described further below, the following CEQA statutes and CEQA Guidelines are of relevance to the analysis of archaeological and historic resources:

1. California Public Resources Code section 21083.2(g): Defines “unique archaeological resource.”
2. California Public Resources Code section 21084.1 and CEQA Guidelines section 15064.5(a): Define historical resources. In addition, CEQA Guidelines section 15064.5(b) defines the phrase “substantial adverse change in the significance of an historical resource;” it also defines the circumstances when a project would materially impair the significance of a historical resource.
3. California Public Resources Code section 5097.98 and CEQA Guidelines section 15064.5(e): Set forth standards and steps to be employed following the accidental discovery of human remains in any location other than a dedicated ceremony.
4. California Public Resources Code sections 21083.2(b)-(c) and CEQA Guidelines section 15126.4: Provide information regarding the mitigation framework for archaeological and historic resources, including options of preservation-in-place mitigation measures; preservation-in-place is the preferred manner of mitigating impacts to significant archaeological sites because it maintains the relationship between artifacts and the archaeological context, and may also help avoid conflict with religious or cultural values of groups associated with the archaeological site(s).

Under CEQA, a project may have a significant effect on the environment if it may cause “a substantial adverse change in the significance of an historical resource” (California Public Resources Code section 21084.1; CEQA Guidelines section 15064.5(b)). If a site is either listed or eligible for listing in the CRHR, or if it is included in a local register of historic resources, or identified as significant in a historical resources survey (meeting the requirements of California Public Resources Code section 5024.1(q)), it is a “historical resource” and is presumed to be historically or culturally significant for purposes of CEQA (California Public Resources Code section 21084.1; CEQA Guidelines section 15064.5(a)). The lead agency is not precluded from determining that a resource is a historical resource even if it does not fall within this presumption (California Public Resources Code section 21084.1; CEQA Guidelines section 15064.5(a)).

A “substantial adverse change in the significance of an historical resource” reflecting a significant effect under CEQA means “physical demolition, destruction, relocation, or alteration of the resource or its immediate surroundings such that the significance of an historical resource would be materially impaired” (CEQA Guidelines section 15064.5(b)(1); California Public Resources Code section 5020.1(q)). In turn, the significance of a historical resource is materially impaired when a project:

1. Demolishes or materially alters in an adverse manner those physical characteristics of an historical resource that convey its historical significance and that justify its inclusion in, or eligibility for, inclusion in the California Register; or
2. Demolishes or materially alters in an adverse manner those physical characteristics that account for its inclusion in a local register of historical resources pursuant to section 5020.1(k) of the Public Resources Code or its identification in an historical resources survey meeting the requirements of section 5024.1(g) of the Public Resources Code, unless the public agency reviewing the effects of the project establishes by a preponderance of evidence that the resource is not historically or culturally significant; or
3. Demolishes or materially alters in an adverse manner those physical characteristics of a historical resource that convey its historical significance and that justify its eligibility for inclusion in the California Register as determined by a lead agency for purposes of CEQA.

See Section 1.2.2, below for a discussion of the CEQA guidelines for determining significance and mitigating impacts to unique archaeological resources.

2.5 California Health and Safety Code section 7050.5 and Public Resources Code Section 5097.98

CEQA Guidelines Section 15064.5 assigns special importance to human remains and specifies procedures to be used when Native American remains are discovered. As described below, these procedures are detailed in California Health and Safety Code Section 7050.5 and Public Resources Code Section 5097.98.

California law protects Native American burials, skeletal remains, and associated grave goods, regardless of their antiquity, and provides for the sensitive treatment and disposition of those remains. Health and Safety Code Section 7050.5 requires that if human remains are discovered in any place other than a dedicated cemetery, no further disturbance or excavation of the site or nearby area reasonably suspected to contain human remains shall occur until the County coroner has examined the remains (California Health and Safety Code Section 7050.5[b]). If the coroner determines or has reason to believe the remains are those of a Native American, the coroner must contact the NAHC within 24 hours (California Health and Safety Code Section 7050.5[c]). In accordance with California Public Resources Code Section 5097.98(a), the NAHC will notify the Most Likely Descendant (MLD). With the permission of the landowner, the MLD may inspect the site of discovery. Within 48 hours of being granted access to the site, the MLD may recommend means of treatment or disposition, with appropriate dignity, of the human remains and associated grave goods.

2.6 Assembly Bill 52

California Assembly Bill 52, which took effect July 1, 2015, establishes a consultation process between California Native American Tribes and lead agencies in order to address tribal concerns regarding project impacts and mitigation to “tribal cultural resources” (TCR). Public Resources Code section 21074(a) defines TCRs and states

that a project that has the potential to cause a substantial adverse change to a TCR is a project that may have an adverse effect on the environment. A TCR is defined as a site, feature, place, cultural landscape, sacred place, and object with cultural value to a California Native American tribe that is either:

1. listed or eligible for listing in the CRHR or a local register of historical resources, or
2. determined by a lead agency to be a TCR.

2.7 City of San Diego Historic Guidelines

The City of San Diego General Plan Programmatic Environmental Impact Report (PEIR) states the following:

“Chapters 11, 12 and 14 of the City of San Diego Municipal Code establish the Historical resources Board (HRB) authority, appointment and terms, meeting conduct, and powers and duties; the designation process including the nomination process, noticing and report requirements, appeals, recordation, amendments or rescission, and nomination of historical resources to state and national registers; and development regulations for historical resources. The purpose of these regulations is to protect, preserve, and, where damaged, restore the historical resources of San Diego. The historical resources regulations require that designated historical resources and traditional cultural properties be preserved unless deviation findings can be made by the decision maker as part of a discretionary permit. Minor alterations consistent with the U.S. Secretary of the Interior’s Standards are exempt from the requirement to obtain a separate permit but must comply with the regulations and associated historical resources guidelines. Limited development may encroach into important archaeological sites if adequate mitigation measures are provided as a condition of approval.

Historical Resources Guidelines, located in the Land Development Manual, provide property owners, the development community, consultants and the general public explicit guidance for the management of historical resources located within the City’s jurisdiction. These guidelines are designed to implement the historical resources regulations and guide the development review process from the need for a survey and how impacts are assessed to available mitigation strategies and report requirements and include appropriate methodologies for treating historical resources located in the City.

Any improvement, building, structure, sign, interior element and fixture, feature, site, place, district, area, or object may be designated a historical resource by the City’s HRB if it meets one or more of the following designation criteria:

- a. exemplifies or reflects special elements of the City’s, a community’s, or a neighborhood’s, historical, archaeological, cultural, social, economic, political, aesthetic, engineering, landscaping or architectural development;
- b. is identified with persons or events significant in local, state or national history;
- c. embodies distinctive characteristics of a style, type, period, or method of construction or is a valuable example of the use of indigenous materials or craftsmanship;

- d. is representative of the notable work of a master builder, designer, architect, engineer, landscape architect, interior designer, artist, or craftsman;
- e. is listed or has been determined eligible by the National Park Service for listing on the National Register of Historic Places or is listed or has been determined eligible by the State Historical Preservation Office for listing on the State Register of Historical Resources; or
- f. is a finite group of resources related to one another in a clearly distinguishable way or is a geographically definable area or neighborhood containing improvements which have a special character, historical interest or aesthetic value or which represent one or more architectural periods or styles in the history and development of the City.”

According to the City’s Significance Determination Thresholds (City of San Diego 2022), impacts to historical resources would be significant if the project would:

- Result in the alteration, including the adverse physical or aesthetic effects and/or the destruction of a prehistoric or historic building (including an architecturally significant building), structure, object, or site;
- Result in any impact to existing religious or sacred uses within the potential impact area; or
- Result in the disturbance of any human remains, including those interred outside of formal cemeteries.

In general, the City’s Historical Resource Guidelines build on federal and state cultural resources laws and guidelines in an attempt to streamline the process of considering impacts to cultural resources within the City’s jurisdiction, while maintaining that some resources not significant under federal or state law may be considered historical under the City’s guidelines. Essentially, the City’s historic resource guidelines localize cultural resources laws providing local perspective on significance criteria. In order to apply the criteria and determine the significance of potential project impacts to a cultural resource, the Area of Potential Effects (APE) of the project must be defined for both direct impacts and indirect impacts. Indirect impacts can include increased public access to an archaeological site, or visual impairment of a historically significant viewshed related to a historic building or structure.

3 Methods

3.1 Archival Research

Dudek consulted historic maps and aerial photographs to understand development of the Project site and surrounding properties. Historic aerial photographs and maps of the Project APE were available for 1953, 1964, 1966, 1967, 1968, 1972, 1978, 1980-1991, 1993-2000, 2002, 2003, 2005, 2009, 2010, 2012, 2014, 2016, and 2018 (NETR 2021). The 1953 historic aerial reveals that the western half of the APE has been graded and cleared and narrow roads have been constructed within the same area. One possible structure on a cleared pad is located within central portion the APE in 1953, however, the aerial does not provide a clear view of the structure. Historic aerials from 1964 to 1978 do not reveal any changes to the Project APE. The 1980 aerial reveals that grading activities have occurred within the southeastern, eastern, and northern portions of the APE. A rectangular structure is located to the north and a larger square structure is located within the eastern portion of the APE in 1980. By 1981, several smaller structures are located within the western portion of the APE within the previously

graded area. By 1982, the residential structure that is currently preset in the Project APE has been constructed. Historic aerials from 1964 to 1978 do not reveal any major changes to the Project APE. The 1985 aerial reveals grading activities within the central portion of the APE. Aerials from 1986 to 1993 do not reveal any major changes to the Project APE. In 1994, an addition to has been added to the residential structure. By 1995, mass grading residential development has occurred to the north of the APE. Aerials from 1996 to 2012 do not reveal any major changes to the Project APE. By 2014 the cleared central portion of the APE has been paved. The APE has maintained the same development since 2014. The existing structures within the APE have all been constructed since 1980 and are not old enough to qualify as potential historical resources under CEQA.

Historic topographic maps (earliest available is 1903) do not show historic-age structures within the Project APE.

3.2 Records Search

Previous Studies

BFSA conducted a records search at the SCIC for the Project APE and a one-mile radius buffer around the Project on March 8, 2019 and Dudek conducted an updated supplemental records search at the SCIC on October 19, 2022 (Confidential Appendix A). The records search results indicate that 51 previous cultural resources studies have been conducted within one-mile of the Project APE. Of the 51 studies, two (2) intersect the Project APE and are listed in Table 1, below. A Due Diligence Study prepared for the Project by BFSA (Smith 2019) in 2019 was provided to Dudek (Confidential Appendix A). This study will be summarized in the next section below. The entire APE of the current Project has been previously studied. A table of the previous studies located outside of the Project APE are included as part of Confidential Appendix A.

Table 1. Previous Technical Studies Intersecting the Project APE

Report Number	Authors	Date	Title	Within APE?
SD-00959	Westec Services, Inc	1985	Cultural Resource Survey and Site Assessment For Scripps Ranch Community Plan, San Diego, California (EQD No. 84-0744)	Yes
SD-02917	RECON	1979	An Archaeological Reconnaissance Survey of Miramar Ranch North	Yes
N/A	Smith, Brian F.	2019	Cultural Resources Due Diligence Study For 11495 Cypress Canyon Road, City of San Diego	Yes

Smith 2019

BFSA completed a Due Diligence Study for the current Project APE in 2019. The study included a review of SCIC records and previous studies, NAHC SLF files, historic aerials and maps, and a reconnaissance survey of the APE. No previously recorded cultural resources were identified by the SCIC within the APE. During the reconnaissance survey, BFSA identified two possible cultural resources. One site, designated Temp-1, is located along the edge of the graded pad of the existing residence structure and consists of marine shell scatter and lithic artifacts. The

second possible site is a small collection of artifacts, observed on a knoll that is bisected by the eastern APE boundary. BFSa speculated that the artifact scatter may be associated, a possible extension, with CA-SDI-8208 as this resource is located directly adjacent to the eastern boundary of the APE. CA-SDI-8208 has been previously determined not significant. Site Temp-1 was not formally documented because that effort was outside of the Due Diligence Study scope. BFSa noted that the APE has been impacted by previous grading activities associated with the existing residence and structures.

In consideration of the presence of the two possible cultural resources in the vicinity of the APE, BFSa recommended a minimal additional study to confirm that no important elements of CA-SDI-8208 exists within the APE. As discussed below, based on a subsequent review of SCCIC records, Dudek has confirmed that this site is mismapped and is located well outside of the APE. As such, this recommendation is not pertinent to the Project. BFSa additionally concluded that the exposed components of Temp-1 would likely not be considered significant under CEQA, however, it is possible that subsurface materials associated with this resource may be beneath the graded residential pad.

Based on historic aerials, BFSa identified a structure on the 1953 aerial. Review of historic aerials determined that the 1953 structure had been destroyed by the construction of the current residence and that it would no longer retain enough integrity to be considered a significant historic structure. Though possible cultural resources are located within the APE, BFSa determined that no significant constraints are present for the Project. At a minimum, per the Due Diligence Study, archaeological and Native American monitoring may be required during ground disturbing activities.

Previously Recorded Resources

The SCIC records indicate that no previously recorded cultural resources are located within the Project APE. The records also indicate that 20 cultural resources have been previously recorded within the one-mile buffer area search radius. The nearest previously-recorded resource is CA-SDI-8208, which consists of a lithic scatter. The SCIC GIS data places CA-SDI-8208 immediately east (less than 10 meters) of the current Project APE; however, the original site record map for CA-SDI-8208 shows that the resource is located 400 meters further south of the mapped location and the current APE. Of the total 20 resources identified in the one-mile buffer, nine (9) are prehistoric resources, five (5) are historic resources, and six (6) are prehistoric isolates (Confidential Appendix A). No historic addresses are within the APE.

CA-SDI-8208

As noted above, CA-SDI-8208 is recorded as a prehistoric lithic scatter site that was recorded by Keith Rhodes in 1980. The site consisted of at least 12 lithic flakes and tools, including a chopping tool and a scraper. The artifacts were described as “of marginal quality.” The site measured approximately 20 meters by 20 meters. In 1985, Westec Services, Inc conducted an archaeological evaluation of the resource that included a surface collection and subsurface testing. The evaluation found that there were no subsurface deposits and Westec recommended the site not significant under CEQA. There is some confusion as to the location of this resource. The SCIC GIS data in the records search places the resource immediately east (less than 10 meters) of the current Project APE, however, the original site record map shows that the resources is located 400 meters further south from the mapped location and from the current APE (Confidential Appendix A).

3.3 Geotechnical Report

Advanced Geotechnical Solutions, Inc. (AGS) completed a geotechnical study for the Project APE in 2020 (AGS 2020). The report details the Project background regarding previous geotechnical investigations, and the results of drilling seven hollowstem auger borings, three sonic borings, and two tripod continuous flight auger borings extending to depths ranging from 10.5 feet to 100 feet below existing ground surface on March and November 2019, and a hand-auger excavation to 3 feet in depth on August 2020. Two major episodes of grading resulted in the filling of the northerly canyon. Undocumented fill soils form the level pad east of the existing residence, and undocumented fill was encountered to a maximum fill thickness of 98 feet. Undocumented fill is also present across the site and used to construct the existing building pads and roads. Engineered fill was placed in the north central canyon area and was encountered to a maximum thickness of 45 feet at the northern end of the property and may exceed 20 feet in thickness where the engineered canyon fill abuts the toe of the undocumented fill slope. Colluvium was encountered in localized areas on mid- to lower northern canyon slopes at 5 feet. Alluvium is present at the bottom of the small reservoir located in the southern portion of the Project and may reach of a thickness of 10 to 20 feet. Slope wash was encountered at 1 to 3 feet in thickness overlaying the undisturbed canyon wall terrain. An intermittent layer of residual soil ranging from 1 to 5 feet in thickness are mantled on top of the sedimentary bedrock of the Poway Group formations.

3.4 NAHC and Tribal Correspondence

Dudek requested NAHC search of its Sacred Lands File (SLF) on September 13, 2021, for the Project APE. Results of the SLF search were received on October 14, 2021. The SLF search did not identify cultural resources for the Project. The NAHC also provided a contact list of Tribal individuals and/or organizations who may have knowledge of cultural resources in or near the Project. Dudek sent outreach letters on November 11, 2021, to the individual on the contact list to solicit information on any known Native American resources that may be located within the Project site that are not listed on the SLF search. To date, no responses have been received by Dudek. Dudek will forward any responses received to the City.

3.5 Intensive Pedestrian Survey

The intensive pedestrian survey was conducted by Dudek archaeologist Matthew DeCarlo on September 13, 2021. Mr. DeCarlo was accompanied by Red Tail Environmental Native American monitor Shuululk Linton during the survey. The Project APE is centered on the peak of a steep hill and most of the terrain consists of heavily vegetated hillsides with slopes greater than 25° (Figure 3). Survey transects were spaced 15 meters wide across accessible areas of the Project APE. Where transects were not feasible (such as on slopes greater than 25°), transects were not utilized. Instead, a mixed approach (opportunistic survey) was utilized, selectively examining terraces, ridges, and potential rock outcrops where possible. Archaeological survey staff exceeded the applicable Secretary of Interior Professional Qualifications Standards for archaeological survey and evaluation. Any cultural resources identified through the records search and during the survey would have been recorded using a Global Positioning System (GPS) receiver with sub-meter accuracy, recording, at a minimum, the horizontal extents of the resource (i.e., site boundary), a sample of surface artifacts, cultural features, and any notable landform features within or adjacent to the site limits. Evidence for buried cultural deposits was opportunistically sought through inspection of natural or artificial erosion exposures and the spoils from rodent burrows. No artifacts were collected during the survey. Field recording and photo documentation, as appropriate, was completed.

During the recent survey, dense vegetation existed to obscure the ground surface throughout the majority of the Project APE. Much of the previously disturbed sediments were covered by buildings, gravel, or landscaping. Dirt access roads throughout the Project APE offered good ground visibility. Traversable portions of the Project APE have been heavily disturbed during the levelling of the hillside for development of the current residential complex. Currently, the building pad, large graveled yard, landscaping, and multiple buildings and sheds cover the terraced surface. There are few level areas on this hillside that are not covered by development.

The previous Due Diligence Study (Smith 2019) identified two possible cultural resources. One site, designated Temp-1, is located along the edge of the graded pad of the existing residence structure and consists of marine shell scatter and “possible” lithic artifacts. Dudek revisited the location of where BSFA identified site Temp-1. The survey team identified marine shell mixed within the planted gardens and other exposed earth along the eastern extent of the main resident. Dudek archaeologist Matthew DeCarlo and Red Tail Environmental Native American monitor Shuuluk Linton found no evidence that the marine shell is prehistoric. The shell appears to have been recently harvested and placed at the residence as part of the landscaping (Figure 4). The current survey crew did not identify any lithic artifacts in the area; however, a large rock collection was identified on the eastern extent of the residential pad (Figure 5). The collection did not contain any lithic artifacts but did contain conchoidally fractured stone suitable for flaked tool production. The collection contains both raw tool stone and non-flakable materials which are not locally available and were acquired from very far away. Whole abalone shells were also on display adjacent to the rock collection. Dudek does not recommend site Temp-1 as a cultural resource. Dudek found no evidence that site Temp-1 is a prehistoric site. No prehistoric lithic artifacts or marine shell were present, rather, the plentiful lithic material and whole and crushed marine shell appear to be the results of modern collecting. The crushed shell appears to have been harvested recently and its confinement to the garden area suggests that it was placed there as fertilizer or as a decoration.

The second possible cultural resource location within the APE, located adjacent to the mismatched location of CA-SDI-8208, that BSFA identified as a small collection of artifacts and possibly an extension of CA-SDI-8208 was also revisited by Dudek. The possible cultural resource was previously observed on a knoll that is bisected by the eastern APE boundary. The survey team gained access to the top of the knoll and conducted tight interval transects. No cultural material (artifacts or midden soil) was identified; only broken stone, consistent with the eroded cobble terrain, were identified. Therefore, Dudek does not recommend this area as a cultural resource.

4 Summary and Management Considerations

4.1 Archaeological Recommendations

Dudek’s cultural resources inventory of the Project indicates that there is low sensitivity for identifying intact subsurface archaeological deposits during Project implementation. No cultural or built environment resources are present within the Project APE. The NAHC did not identify cultural resources for the Project. Undocumented fill is also present across the Project APE and was encountered to a maximum fill thickness of 98 feet (AGS 2020).

The previous Due Diligence Study (Smith 2019) identified two possible cultural resources. One site, designated Temp-1, is located along the edge of the graded pad of the existing residence structure and consists of marine shell scatter. The second possible cultural resource consisting of a possible extension of the mismatched CA-SDI-8208 was observed on a knoll that is bisected by the eastern APE boundary. Dudek found no evidence that site Temp-1

is a prehistoric site and did not relocate the second possible cultural resource that was identified on a knoll that is bisected by the eastern APE boundary. No prehistoric lithic artifacts or marine shell were present, rather, the plentiful lithic material and whole and crushed marine shell appear to be the results of modern collecting. The crushed shell appears to have been harvested recently and its confinement to the garden area suggests that it was placed there as fertilizer or as a decoration.

As there are no cultural resources in the APE, no historical resources, as defined under CEQA and City guidelines, will be impacted by the Project. This includes no direct, indirect, or cumulative impacts. In consideration of the negative results of the SCIC records search, archival research, and intensive-level survey, no further archaeological efforts or mitigation, including cultural construction monitoring, are recommended to be necessary in support of implementation of the Project.

Unanticipated Discovery of Archaeological Resources

In the event that archaeological resources (sites, features, or artifacts) are exposed during construction activities for the Project, all construction work occurring within 100 feet of the find shall immediately stop. Upon discovery, the construction manager (CM) shall immediately notify the Resident Engineer (RE). The RE or CM shall immediately notify Mitigation Monitoring Coordinator (MMC) by phone and will provide written notification to MMC within 24 hours. No work at the location of discovery shall occur until a City-qualified archaeologist (Principal Investigator) meeting the Secretary of the Interior's Professional Qualification Standards can evaluate the significance of the find and determine whether or not additional study is warranted. If the discovery is clearly not significant (e.g., and isolate) the archaeologist may simply record the find, notify MMC, the RE, and CM and allow work to continue. If the discovery proves potentially significant under CEQA, additional work such as preparation of an archaeological treatment plan, testing, or data recovery may be warranted.

Unanticipated Discovery of Human Remains

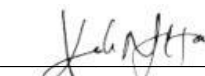
In accordance with Section 7050.5 of the California Health and Safety Code, if human remains are found, the County Coroner shall be immediately notified of the discovery. No further excavation or disturbance of the site or any nearby area reasonably suspected to overlie adjacent remains shall occur until the appropriate treatment and disposition of the human remains. If the County Coroner determines that the remains are, or are believed to be, Native American, he or she shall notify the NAHC in Sacramento within 24 hours. In accordance with California Public Resources Code Section 5097.98, the NAHC must immediately notify the person or persons it believes to be the MLD from the deceased Native American. The MLD shall complete inspection within 48 hours of being granted access to the site and make recommendations for the treatment and disposition, in consultation with the property owner, of the human remains.

Should you have any questions relating to this report and its findings, please do not hesitate to contact me at 760.479.4855 or apham@dudek.com.

Respectfully Submitted,



Angela Pham, M.A., RPA
Archaeologist

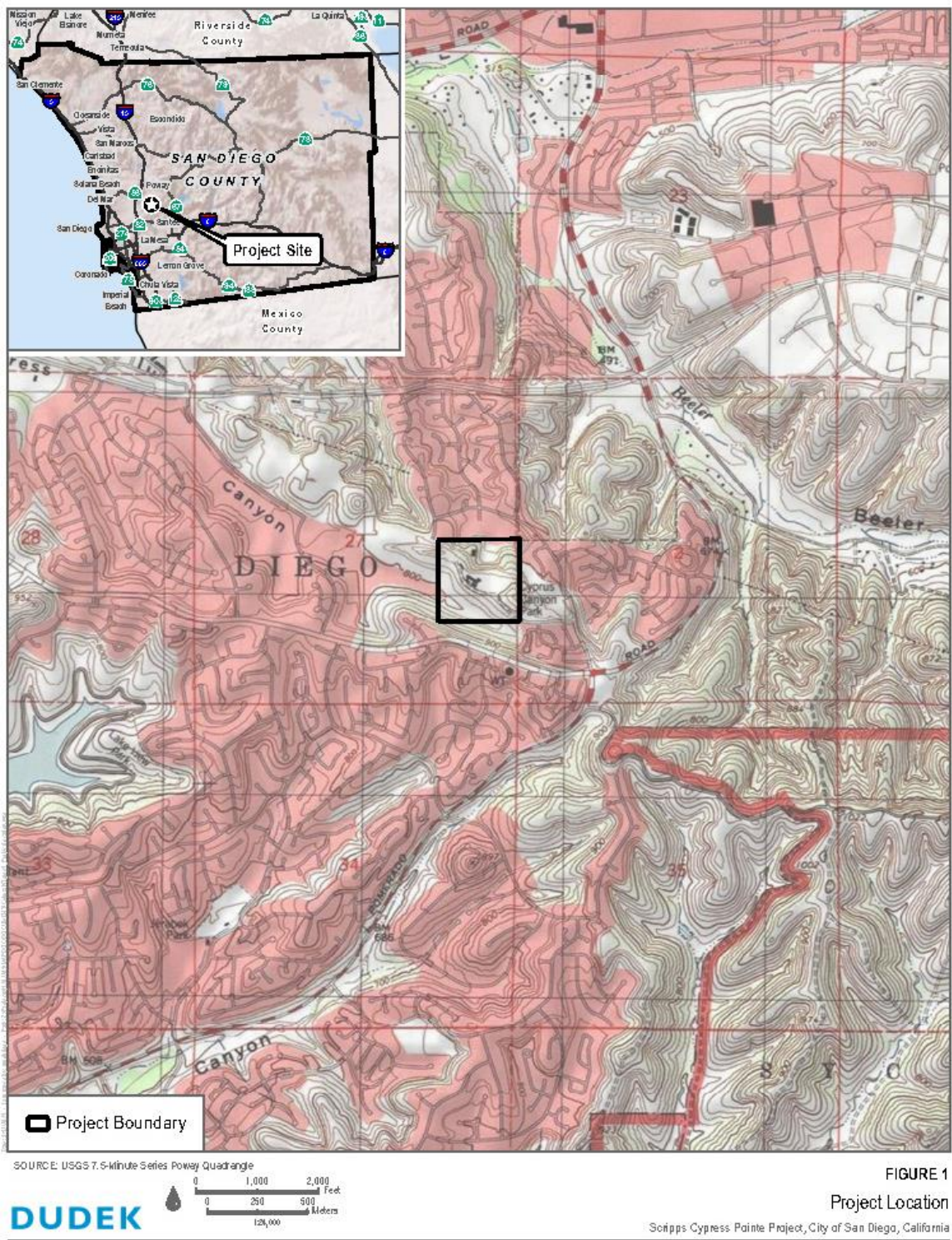


Keshia Montifolca, M.A., RPA
Archaeologist

Att: *Figure 1, Project Location*
Figure 2, APE Map
National Archaeological Database Information Sheet
Confidential Appendix A, SCIC Records Search Results
Appendix B, NAHC Correspondence
cc: *Iulia Roman, Micah Hale, Matthew DeCarlo, Dudek*

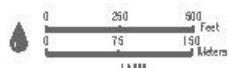
5 References

- AGS. 2020. Preliminary Geotechnical Investigation and 50-Scale Tentative Map Review for the Renzulli Estates 11495 Cypress Canyon Road, San Diego, California.
- City of San Diego. 2022. California Environmental Quality Act Significance Determination Thresholds. September 2022. https://www.sandiego.gov/sites/default/files/september_2022_ceqa_thresholds_final.pdf
- NETR (National Environmental Title Research). 2021. Address search for 11495 Cypress Canyon Road, San Diego, California. Accessed September 28, 2021 <http://www.historicaerials.com/>
- Smith, Brian F. 2019. Cultural resources Due Diligence Study for the 11495 Cypress Canyon Road, City of San Diego. Submitted to the City of San Diego.





DUDEK



Area of Potential Effects

Scripps Cypress Pointe Project, City of San Diego, California

Figure 2. Area of Potential Effects



Figure 3. Overview of APE facing east

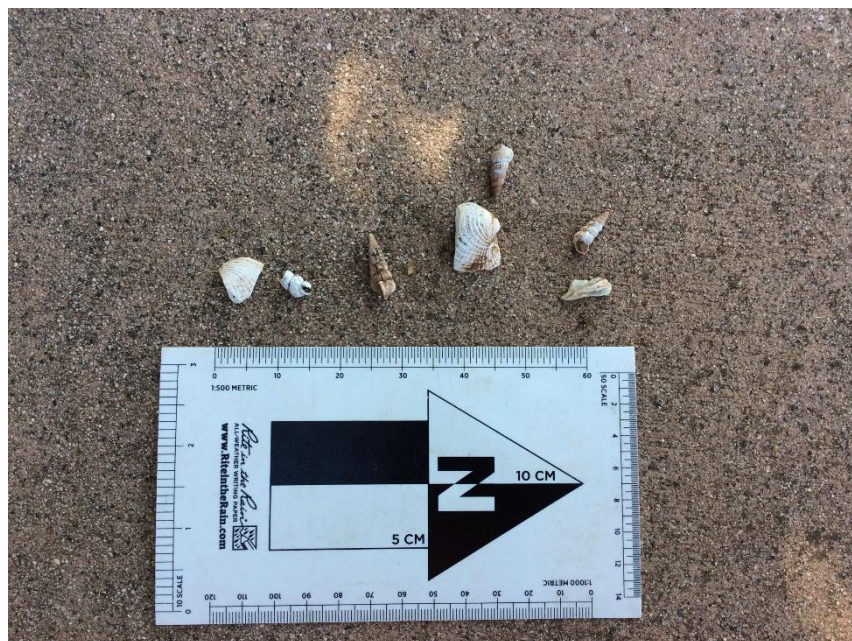


Figure 4. Overview of marine shell



Figure 5. Overview of rock and shell collection

National Archaeological Database (NADB) Information

Authors:	Angela Pham M.A., RPA. Matthew DeCarlo M.A., and Keshia Montifolca, M.A., RPA
Firm:	Dudek
Project Proponent:	City of San Diego
Report Date:	February 2023
Report Title:	Negative Cultural Resources Letter Report for the Renzulli Estates Project, City of San Diego, California
Type of Study:	Cultural Resources Inventory
Resources:	None
USGS Quads:	Poway, California, Township 14 South, Range 2 West, Section 27
Acreage:	40.56 acres
Permit Numbers:	Planned Development Permit (Numbers not available at this time)
Keywords:	Pedestrian Survey, Inventory, Negative, San Diego

Confidential Appendix A

SCIC Records Search Results and Due Diligence Study

Appendix B

NAHC Correspondence and Tribal Outreach

Sacred Lands File & Native American Contacts List Request

Native American Heritage Commission

1550 Harbor Blvd, Suite 100

West Sacramento, CA 95691

916-373-3710

916-373-5471 – Fax

nahc@nahc.ca.gov

Information Below is Required for a Sacred Lands File Search

Project: 12622 Cypress Canyon/Renzuilli Estates Project

County: San Diego County, City of San Diego

USGS Quadrangle Name: 7.5-Minute Series Poway Quadrangles

Township: 14S **Range:** 2W **Section(s):** 35

Company/Firm/Agency: Dudek

Street Address: 605 Third Street

City: Encinitas **Zip:** 92024

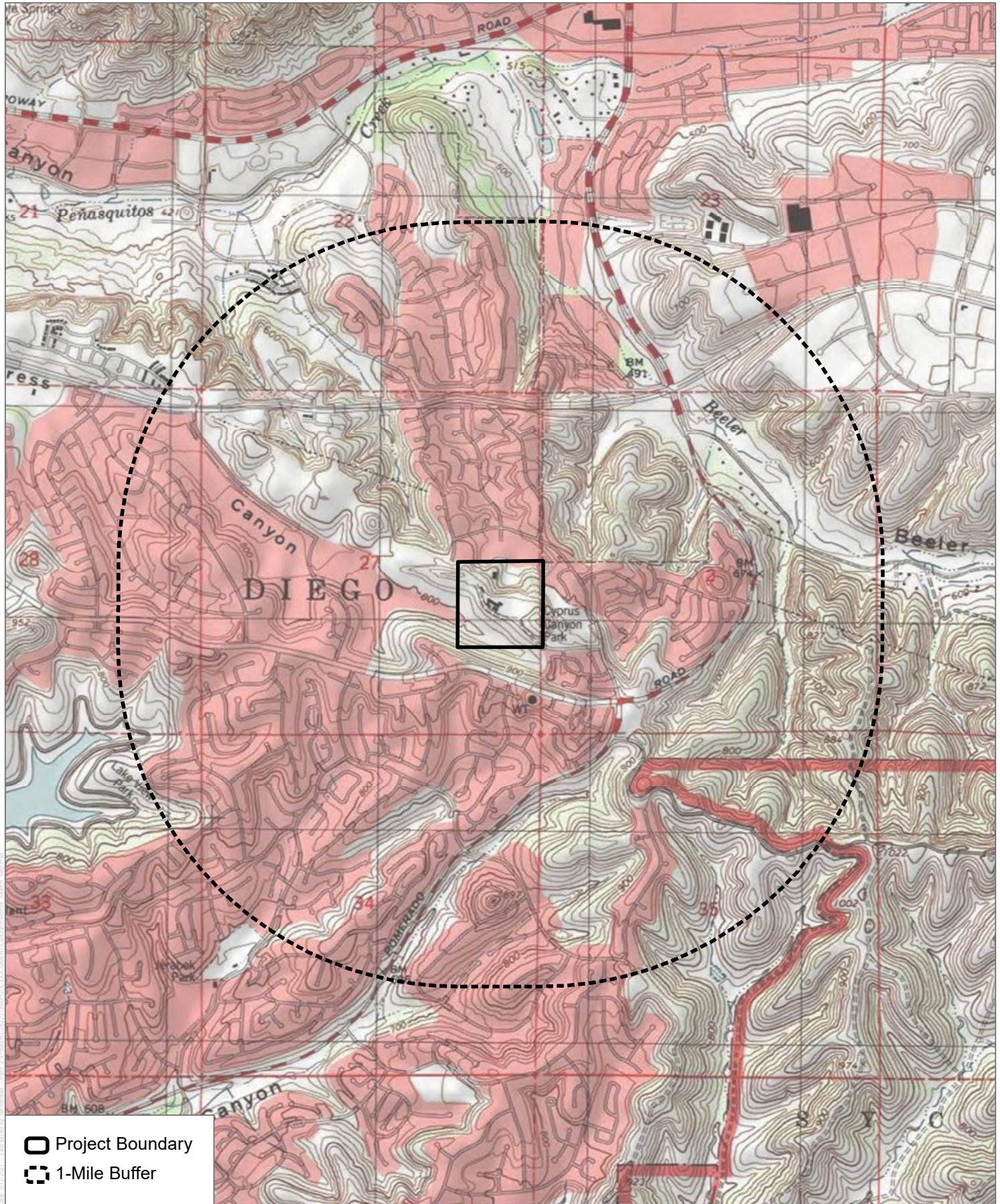
Phone: 760.479.4827

Fax: 760.632.0164

Email: mmurillo@dudek.com & apham@dudek.com

Project Description:

The City is proposing the demolition of an existing residence (and all associated structures) onsite and the construction of 100 single-family homes and 10 multi-family affordable income rental units. The total acreage of the project will be 40 acres.



SOURCE: USGS 7.5-Minute Series Poway Quadrangle



Records Search

Scripps Cypress Pointe Project, City of San Diego, California



NATIVE AMERICAN HERITAGE COMMISSION

October 14, 2021

Makayla Murillo
Dudek

Via Email to: mmurillo@dudek.com & apham@dudek.com

CHAIRPERSON
Laura Miranda
Luiseño

VICE CHAIRPERSON
Reginald Pagaling
Chumash

SECRETARY
Merri Lopez-Keifer
Luiseño

PARLIAMENTARIAN
Russell Attebery
Karuk

COMMISSIONER
William Mungary
Paiute/White Mountain
Apache

COMMISSIONER
Julie Tumamait-Stenslie
Chumash

COMMISSIONER
[Vacant]

COMMISSIONER
[Vacant]

COMMISSIONER
[Vacant]

EXECUTIVE SECRETARY
Christina Snider
Pomo

NAHC HEADQUARTERS
1550 Harbor Boulevard
Suite 100
West Sacramento,
California 95691
(916) 373-3710
nahc@nahc.ca.gov
NAHC.ca.gov

Re: 12622 Cypress Canyon/Renzuilli Estates Project, San Diego County

Dear Ms. Murillo:

A record search of the Native American Heritage Commission (NAHC) Sacred Lands File (SLF) was completed for the information you have submitted for the above referenced project. The results were negative. However, the absence of specific site information in the SLF does not indicate the absence of cultural resources in any project area. Other sources of cultural resources should also be contacted for information regarding known and recorded sites.

Attached is a list of Native American tribes who may also have knowledge of cultural resources in the project area. This list should provide a starting place in locating areas of potential adverse impact within the proposed project area. I suggest you contact all of those indicated; if they cannot supply information, they might recommend others with specific knowledge. By contacting all those listed, your organization will be better able to respond to claims of failure to consult with the appropriate tribe. If a response has not been received within two weeks of notification, the Commission requests that you follow-up with a telephone call or email to ensure that the project information has been received.

If you receive notification of change of addresses and phone numbers from tribes, please notify me. With your assistance, we can assure that our lists contain current information.

If you have any questions or need additional information, please contact me at my email address: Andrew.Green@nahc.ca.gov.

Sincerely,

Andrew Green
Cultural Resources Analyst

Attachment

**Native American Heritage Commission
Native American Contact List
San Diego County
10/14/2021**

Barona Group of the Capitan Grande

Edwin Romero, Chairperson
1095 Barona Road Diegueno
Lakeside, CA, 92040
Phone: (619) 443 - 6612
Fax: (619) 443-0681
cloyd@barona-nsn.gov

Campo Band of Diegueno Mission Indians

Ralph Goff, Chairperson
36190 Church Road, Suite 1 Diegueno
Campo, CA, 91906
Phone: (619) 478 - 9046
Fax: (619) 478-5818
rgoff@campo-nsn.gov

Ewiiapaayp Band of Kumeyaay Indians

Michael Garcia, Vice Chairperson
4054 Willows Road Diegueno
Alpine, CA, 91901
Phone: (619) 933 - 2200
Fax: (619) 445-9126
michaelg@leaningrock.net

Ewiiapaayp Band of Kumeyaay Indians

Robert Pinto, Chairperson
4054 Willows Road Diegueno
Alpine, CA, 91901
Phone: (619) 368 - 4382
Fax: (619) 445-9126
ceo@ebki-nsn.gov

Iipay Nation of Santa Ysabel

Clint Linton, Director of Cultural Resources
P.O. Box 507 Diegueno
Santa Ysabel, CA, 92070
Phone: (760) 803 - 5694
cjlinton73@aol.com

Iipay Nation of Santa Ysabel

Virgil Perez, Chairperson
P.O. Box 130 Diegueno
Santa Ysabel, CA, 92070
Phone: (760) 765 - 0845
Fax: (760) 765-0320

Inaja-Cosmit Band of Indians

Rebecca Osuna, Chairperson
2005 S. Escondido Blvd. Diegueno
Escondido, CA, 92025
Phone: (760) 737 - 7628
Fax: (760) 747-8568

Jamul Indian Village

Erica Pinto, Chairperson
P.O. Box 612 Diegueno
Jamul, CA, 91935
Phone: (619) 669 - 4785
Fax: (619) 669-4817
epinto@jiv-nsn.gov

Jamul Indian Village

Lisa Cumper, Tribal Historic Preservation Officer
P.O. Box 612 Diegueno
Jamul, CA, 91935
Phone: (619) 669 - 4855
lcumper@jiv-nsn.gov

Kwaaymii Laguna Band of Mission Indians

Carmen Lucas,
P.O. Box 775 Kwaaymii
Pine Valley, CA, 91962 Diegueno
Phone: (619) 709 - 4207

La Posta Band of Diegueno Mission Indians

Gwendolyn Parada, Chairperson
8 Crestwood Road Diegueno
Boulevard, CA, 91905
Phone: (619) 478 - 2113
Fax: (619) 478-2125
LP13boots@aol.com

La Posta Band of Diegueno Mission Indians

Javaughn Miller, Tribal Administrator
8 Crestwood Road Diegueno
Boulevard, CA, 91905
Phone: (619) 478 - 2113
Fax: (619) 478-2125
jmiller@LPtribe.net

This list is current only as of the date of this document. Distribution of this list does not relieve any person of statutory responsibility as defined in Section 7050.5 of the Health and Safety Code, Section 5097.94 of the Public Resource Section 5097.98 of the Public Resources Code.

This list is only applicable for contacting local Native Americans with regard to cultural resources assessment for the proposed 12622 Cypress Canyon/Renzuilli Estates Project, San Diego County.

**Native American Heritage Commission
Native American Contact List
San Diego County
10/14/2021**

***Manzanita Band of Kumeyaay
Nation***

Angela Elliott Santos, Chairperson
P.O. Box 1302 Diegueno
Boulevard, CA, 91905
Phone: (619) 766 - 4930
Fax: (619) 766-4957

***Sycuan Band of the Kumeyaay
Nation***

Kristie Orosco, Kumeyaay
Resource Specialist
1 Kwaaypaay Court Kumeyaay
El Cajon, CA, 92019
Phone: (619) 445 - 6917

***Mesa Grande Band of Diegueno
Mission Indians***

Michael Linton, Chairperson
P.O Box 270 Diegueno
Santa Ysabel, CA, 92070
Phone: (760) 782 - 3818
Fax: (760) 782-9092
mesagrandeband@msn.com

***Viejas Band of Kumeyaay
Indians***

John Christman, Chairperson
1 Viejas Grade Road Diegueno
Alpine, CA, 91901
Phone: (619) 445 - 3810
Fax: (619) 445-5337

***San Pasqual Band of Diegueno
Mission Indians***

Allen Lawson, Chairperson
P.O. Box 365 Diegueno
Valley Center, CA, 92082
Phone: (760) 749 - 3200
Fax: (760) 749-3876
allenl@sanpasqualtribe.org

***Viejas Band of Kumeyaay
Indians***

Ernest Pingleton, Tribal Historic
Officer, Resource Management
1 Viejas Grade Road Diegueno
Alpine, CA, 91901
Phone: (619) 659 - 2314
epingleton@viejas-nsn.gov

***San Pasqual Band of Diegueno
Mission Indians***

John Flores, Environmental
Coordinator
P. O. Box 365 Diegueno
Valley Center, CA, 92082
Phone: (760) 749 - 3200
Fax: (760) 749-3876
johnf@sanpasqualtribe.org

***Sycuan Band of the Kumeyaay
Nation***

Cody Martinez, Chairperson
1 Kwaaypaay Court Kumeyaay
El Cajon, CA, 92019
Phone: (619) 445 - 2613
Fax: (619) 445-1927
ssilva@sycuan-nsn.gov

This list is current only as of the date of this document. Distribution of this list does not relieve any person of statutory responsibility as defined in Section 7050.5 of the Health and Safety Code, Section 5097.94 of the Public Resource Section 5097.98 of the Public Resources Code.

This list is only applicable for contacting local Native Americans with regard to cultural resources assessment for the proposed 12622 Cypress Canyon/Renzuilli Estates Project, San Diego County.

November 9, 2021

Mr. John Christman, Chairperson
Viejas Band of Kumeyaay Indians
1 Viejas Grade Rd.
Alpine, CA 91901

Subject: Information Request for the Cypress Canyon/Renzuilli Estates Project, San Diego County, City of San Diego, California

Dear Mr. Christman,

The Project proponent is proposing the demolition of an existing residence (and all associated structures) onsite and the construction of 100 single-family homes and 100 multi-family affordable income rental units in the northeast section of the City of San Diego, California. The Project also includes associated roads, sidewalks, and landscaping. The site is located at 11495 Cypress Canyon Road (APN 319-020-04-00) in the northeast section of the City of San Diego, California and is south of Scripps Poway Parkway and north of Spring Canyon Road. This project falls in within Section 27 of Township 14 South, Range 2 West of the Poway California 7.5-minute U.S. Geological Survey Topographic Quadrangle Map (Figure 1).

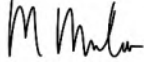
As part of the cultural resources study prepared for the proposed project, Dudek contacted the California Native American Heritage Commission (NAHC) to request a Sacred Lands File (SLF) search and a list of Native American individuals and/or tribal organizations who may have knowledge of cultural resources in or near the proposed project area. The NAHC emailed a response on November 9, 2021 which stated that the SLF search identified the presence of Native American cultural resources in the immediate project area.

The NAHC recommended that we contact you regarding your knowledge of the presence of cultural resources that may be impacted by this project. If you have any knowledge of cultural resources that may exist within or near the proposed project area, please contact me directly at (760) 846-5874 or at mmurillo@dudek.com within 30 days of receipt of this letter.

Please note that this letter does not constitute Assembly Bill (AB) 52 notification or initiation of consultation. AB 52 is a process between the lead agency and California Native American Tribes concerning potential impacts to tribal cultural resources. Tribes that wish to be notified of projects for the purposes of AB 52 must contact the lead agency, City of Oceanside, in writing (pursuant to Public Resources Code Section 21080.3.1 (b))

If you have any information or concerns pertaining to such information, please contact me by phone or email.

Respectfully,



Makayla Murillo, B.A.

Archaeologist

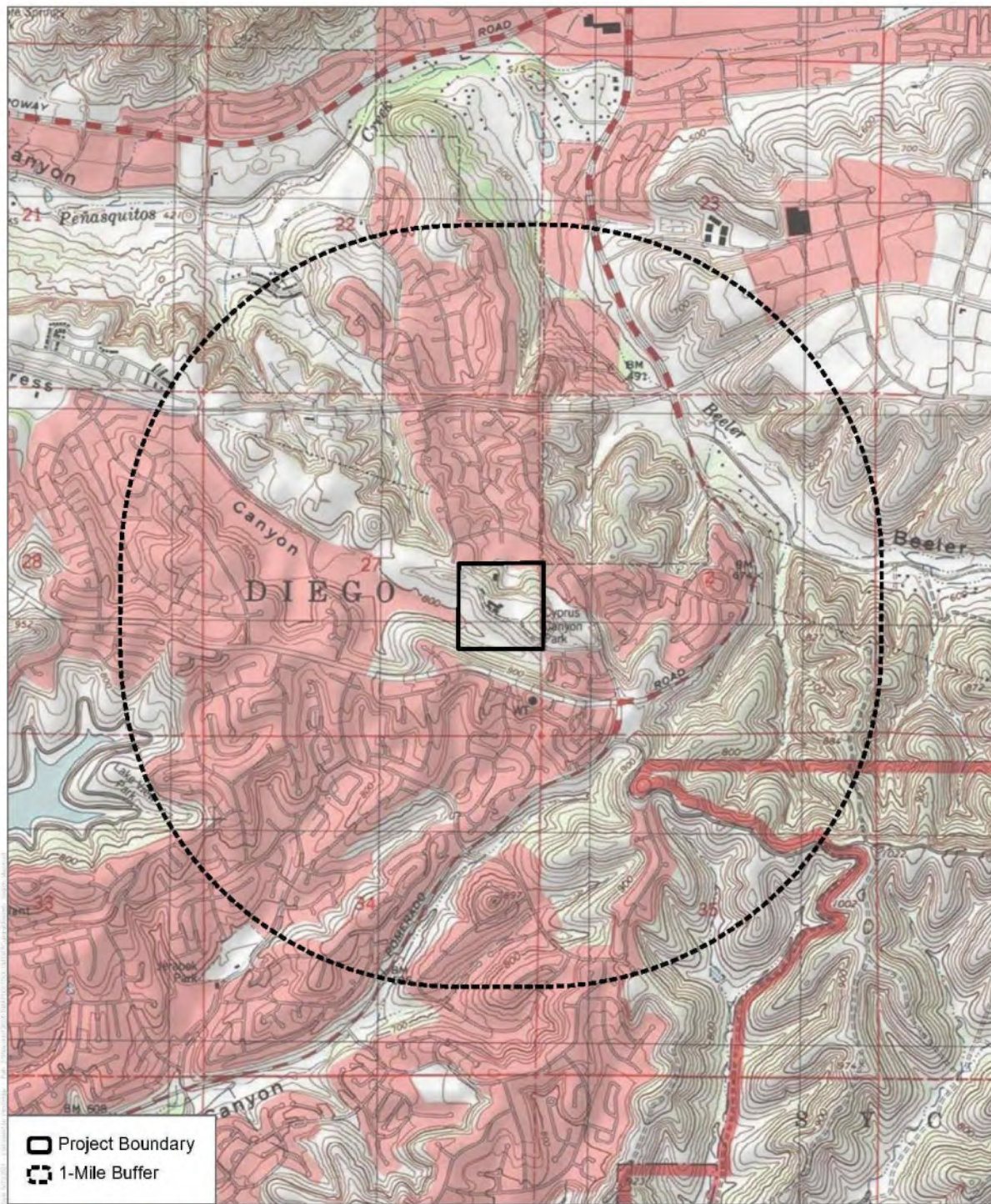
DUDEK

Phone: (760) 846-5874

Cell: (760) 805-4040

Email: mmurillo@dudek.com

Attachments: Figure 1. Regional project map.



SOURCE: USGS 7.5-Minute Series Poway Quadrangle



Records Search

Scripps Cypress Pointe Project, City of San Diego, California

November 9, 2021

Ms. Lisa Cumper, THPO
Jamul Indian Village
P.O. Box 612
Jamul, CA 91935

Subject: Information Request for the Cypress Canyon/Renzuilli Estates Project, San Diego County, City of San Diego, California

Dear Ms. Cumper,

The Project proponent is proposing the demolition of an existing residence (and all associated structures) onsite and the construction of 100 single-family homes and 100 multi-family affordable income rental units in the northeast section of the City of San Diego, California. The Project also includes associated roads, sidewalks, and landscaping. The site is located at 11495 Cypress Canyon Road (APN 319-020-04-00) in the northeast section of the City of San Diego, California and is south of Scripps Poway Parkway and north of Spring Canyon Road. This project falls in within Section 27 of Township 14 South, Range 2 West of the Poway California 7.5-minute U.S. Geological Survey Topographic Quadrangle Map (Figure 1).

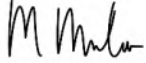
As part of the cultural resources study prepared for the proposed project, Dudek contacted the California Native American Heritage Commission (NAHC) to request a Sacred Lands File (SLF) search and a list of Native American individuals and/or tribal organizations who may have knowledge of cultural resources in or near the proposed project area. The NAHC emailed a response on November 9, 2021 which stated that the SLF search identified the presence of Native American cultural resources in the immediate project area.

The NAHC recommended that we contact you regarding your knowledge of the presence of cultural resources that may be impacted by this project. If you have any knowledge of cultural resources that may exist within or near the proposed project area, please contact me directly at (760) 846-5874 or at mmurillo@dudek.com within 30 days of receipt of this letter.

Please note that this letter does not constitute Assembly Bill (AB) 52 notification or initiation of consultation. AB 52 is a process between the lead agency and California Native American Tribes concerning potential impacts to tribal cultural resources. Tribes that wish to be notified of projects for the purposes of AB 52 must contact the lead agency, City of Oceanside, in writing (pursuant to Public Resources Code Section 21080.3.1 (b))

If you have any information or concerns pertaining to such information, please contact me by phone or email.

Respectfully,



Makayla Murillo, B.A.

Archaeologist

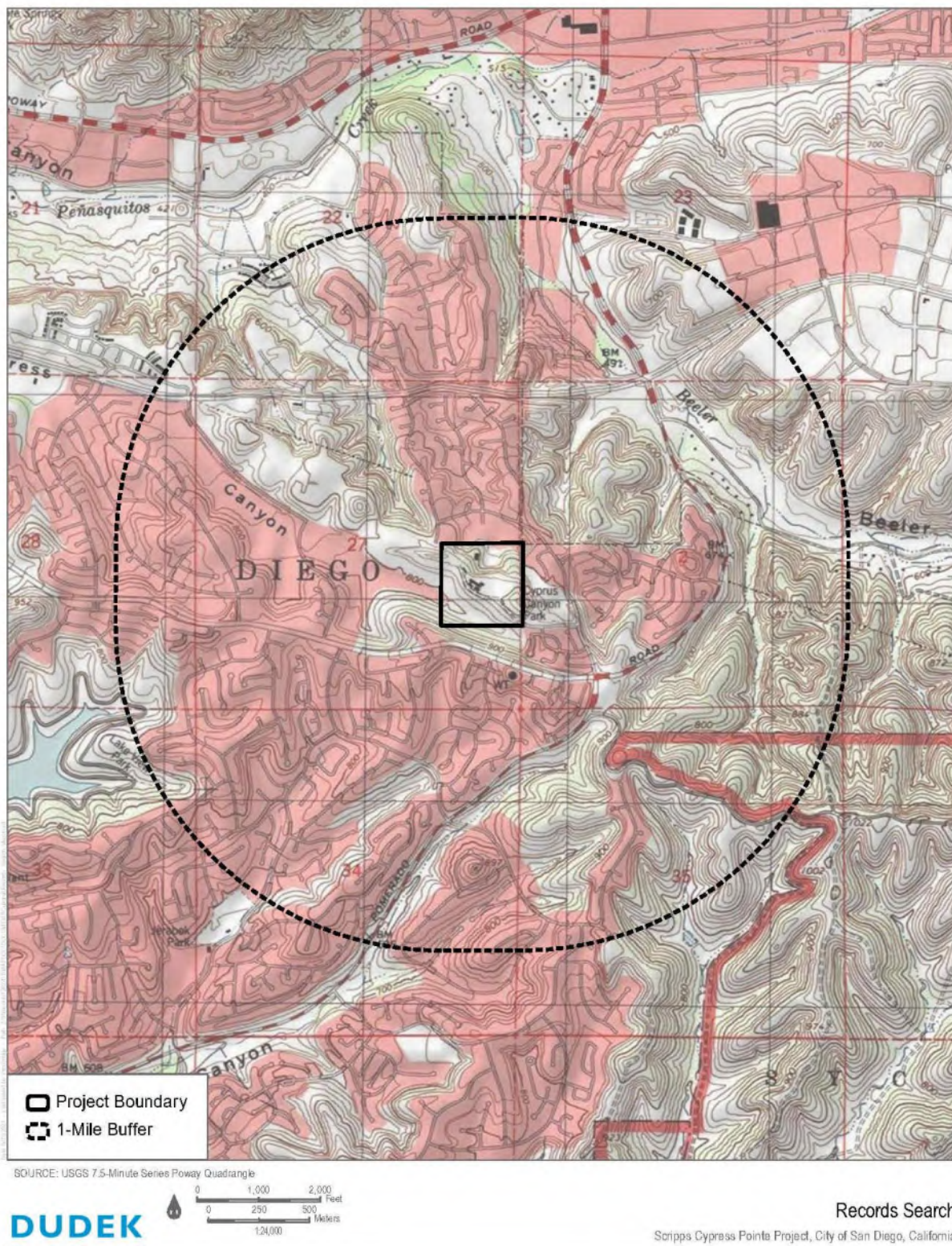
DUDEK

Phone: (760) 846-5874

Cell: (760) 805-4040

Email: mmurillo@dudek.com

Attachments: Figure 1. Regional project map.



November 9, 2021

Mr. John Flores, Environmental Coordinator
San Pasqual Band of Diegueno Mission Indians
P.O. Box 365
Valley Center, CA 92082

Subject: Information Request for the Cypress Canyon/Renzuilli Estates Project, San Diego County, City of San Diego, California

Dear Mr. Flores,

The Project proponent is proposing the demolition of an existing residence (and all associated structures) onsite and the construction of 100 single-family homes and 100 multi-family affordable income rental units in the northeast section of the City of San Diego, California. The Project also includes associated roads, sidewalks, and landscaping. The site is located at 11495 Cypress Canyon Road (APN 319-020-04-00) in the northeast section of the City of San Diego, California and is south of Scripps Poway Parkway and north of Spring Canyon Road. This project falls in within Section 27 of Township 14 South, Range 2 West of the Poway California 7.5-minute U.S. Geological Survey Topographic Quadrangle Map (Figure 1).

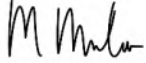
As part of the cultural resources study prepared for the proposed project, Dudek contacted the California Native American Heritage Commission (NAHC) to request a Sacred Lands File (SLF) search and a list of Native American individuals and/or tribal organizations who may have knowledge of cultural resources in or near the proposed project area. The NAHC emailed a response on November 9, 2021 which stated that the SLF search identified the presence of Native American cultural resources in the immediate project area.

The NAHC recommended that we contact you regarding your knowledge of the presence of cultural resources that may be impacted by this project. If you have any knowledge of cultural resources that may exist within or near the proposed project area, please contact me directly at (760) 846-5874 or at mmurillo@dudek.com within 30 days of receipt of this letter.

Please note that this letter does not constitute Assembly Bill (AB) 52 notification or initiation of consultation. AB 52 is a process between the lead agency and California Native American Tribes concerning potential impacts to tribal cultural resources. Tribes that wish to be notified of projects for the purposes of AB 52 must contact the lead agency, City of Oceanside, in writing (pursuant to Public Resources Code Section 21080.3.1 (b))

If you have any information or concerns pertaining to such information, please contact me by phone or email.

Respectfully,



Makayla Murillo, B.A.

Archaeologist

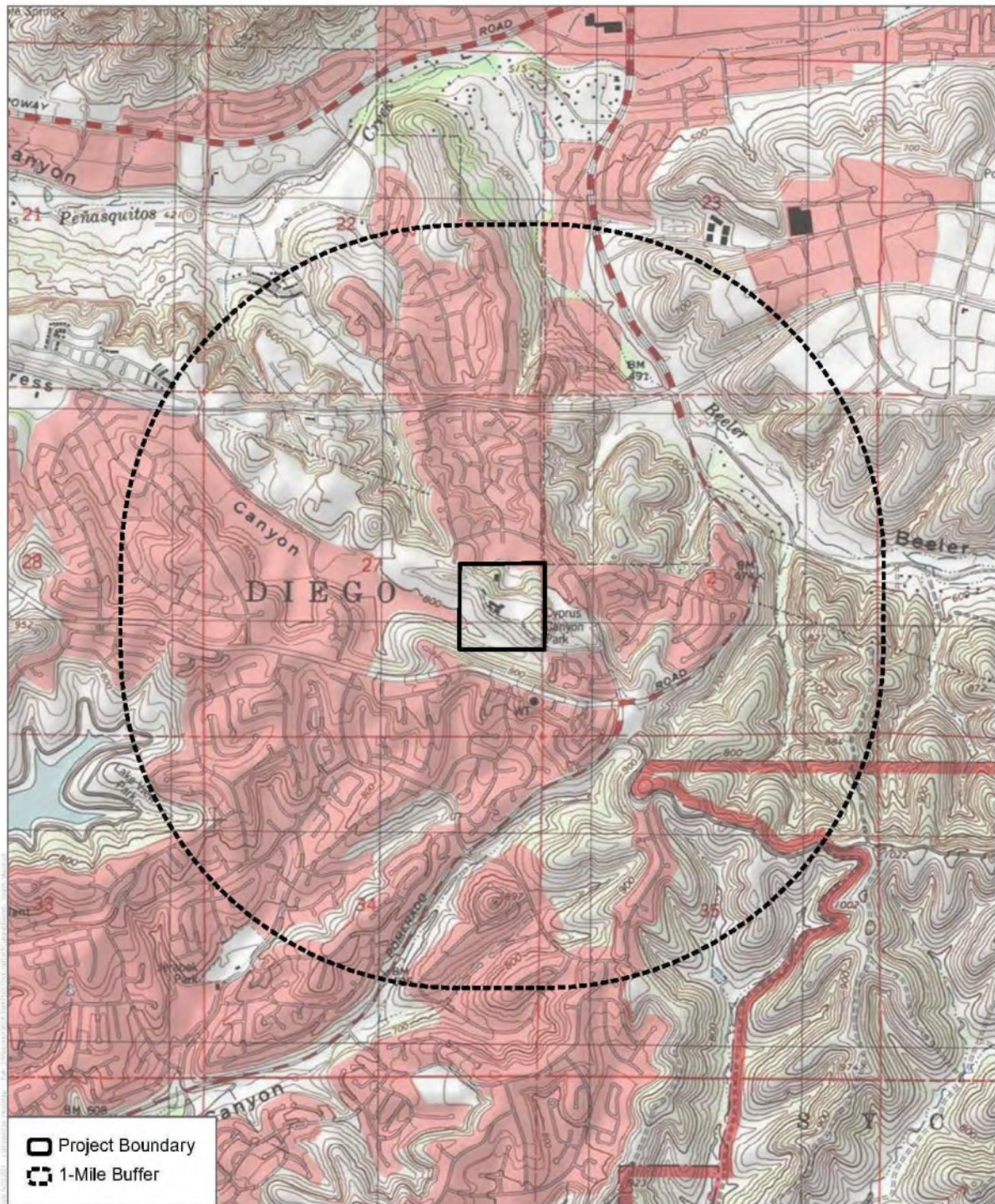
DUDEK

Phone: (760) 846-5874

Cell: (760) 805-4040

Email: mmurillo@dudek.com

Attachments: Figure 1. Regional project map.



SOURCE: USGS 7.5-Minute Series Poway Quadrangle



Records Search

Scipps Cypress Pointe Project, City of San Diego, California

November 9, 2021

Mr. Michael Garcia, Vice Chairperson
Ewiiapaayp Tribe
4054 Willows Road
Alpine, CA 91901

Subject: Information Request for the Cypress Canyon/Renzuilli Estates Project, San Diego County, City of San Diego, California

Dear Mr. Garcia,

The Project proponent is proposing the demolition of an existing residence (and all associated structures) onsite and the construction of 100 single-family homes and 100 multi-family affordable income rental units in the northeast section of the City of San Diego, California. The Project also includes associated roads, sidewalks, and landscaping. The site is located at 11495 Cypress Canyon Road (APN 319-020-04-00) in the northeast section of the City of San Diego, California and is south of Scripps Poway Parkway and north of Spring Canyon Road. This project falls in within Section 27 of Township 14 South, Range 2 West of the Poway California 7.5-minute U.S. Geological Survey Topographic Quadrangle Map (Figure 1).

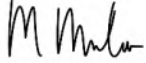
As part of the cultural resources study prepared for the proposed project, Dudek contacted the California Native American Heritage Commission (NAHC) to request a Sacred Lands File (SLF) search and a list of Native American individuals and/or tribal organizations who may have knowledge of cultural resources in or near the proposed project area. The NAHC emailed a response on November 9, 2021 which stated that the SLF search identified the presence of Native American cultural resources in the immediate project area.

The NAHC recommended that we contact you regarding your knowledge of the presence of cultural resources that may be impacted by this project. If you have any knowledge of cultural resources that may exist within or near the proposed project area, please contact me directly at (760) 846-5874 or at mmurillo@dudek.com within 30 days of receipt of this letter.

Please note that this letter does not constitute Assembly Bill (AB) 52 notification or initiation of consultation. AB 52 is a process between the lead agency and California Native American Tribes concerning potential impacts to tribal cultural resources. Tribes that wish to be notified of projects for the purposes of AB 52 must contact the lead agency, City of Oceanside, in writing (pursuant to Public Resources Code Section 21080.3.1 (b))

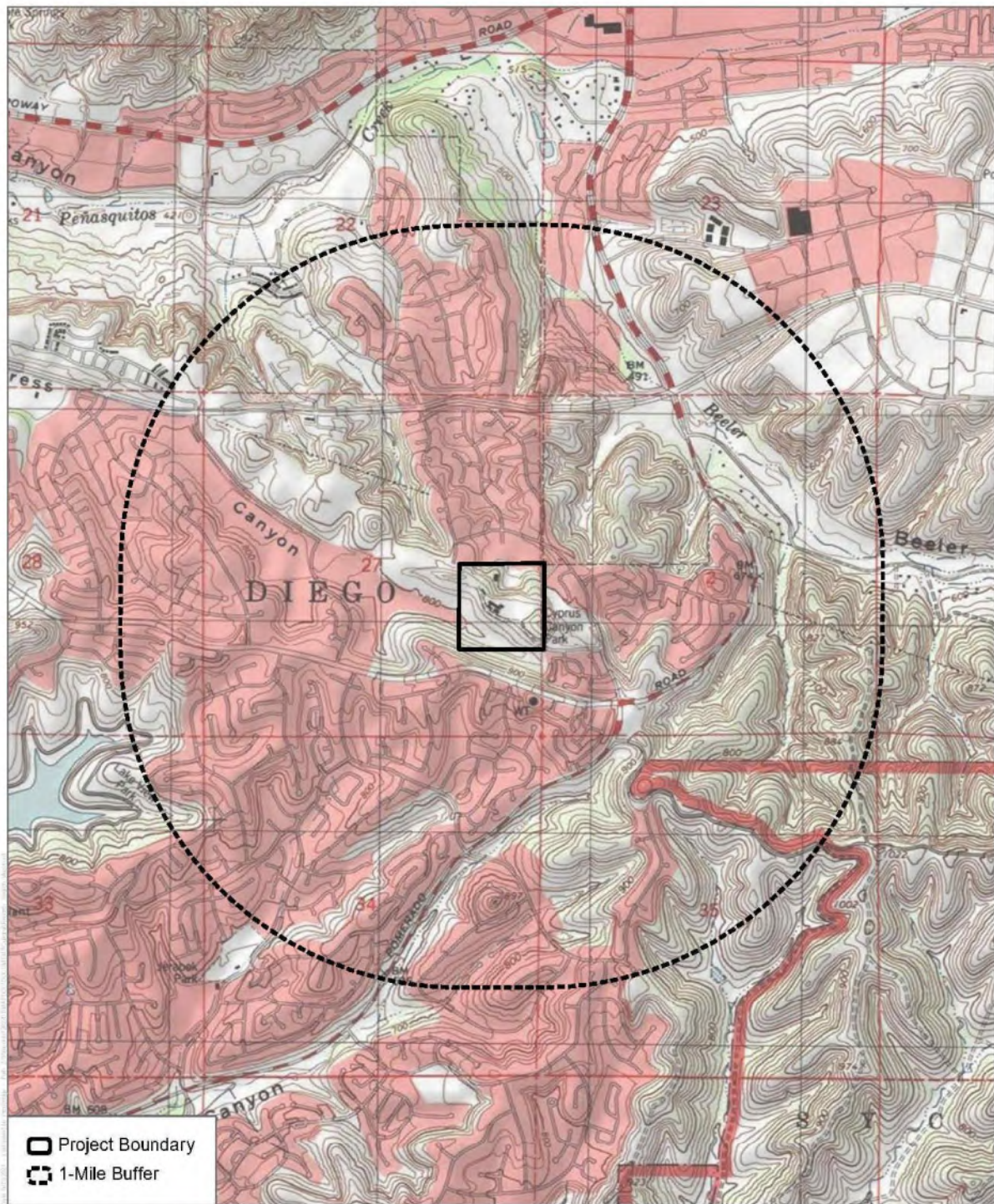
If you have any information or concerns pertaining to such information, please contact me by phone or email.

Respectfully,



Makayla Murillo, B.A.
Archaeologist
DUDEK
Phone: (760) 846-5874
Cell: (760) 805-4040
Email: mmurillo@dudek.com

Attachments: Figure 1. Regional project map.



SOURCE: USGS 7.5-Minute Series Poway Quadrangle

DUDEK

Records Search

Scripps Cypress Pointe Project, City of San Diego, California

November 9, 2021

Mr. Ralph Goff, Chairperson
Campo Band of Diegueno Mission Indians
36190 Church Road, Suite 1
Campo, CA 91906

Subject: Information Request for the Cypress Canyon/Renzuilli Estates Project, San Diego County, City of San Diego, California

Dear Mr. Goff,

The Project proponent is proposing the demolition of an existing residence (and all associated structures) onsite and the construction of 100 single-family homes and 100 multi-family affordable income rental units in the northeast section of the City of San Diego, California. The Project also includes associated roads, sidewalks, and landscaping. The site is located at 11495 Cypress Canyon Road (APN 319-020-04-00) in the northeast section of the City of San Diego, California and is south of Scripps Poway Parkway and north of Spring Canyon Road. This project falls in within Section 27 of Township 14 South, Range 2 West of the Poway California 7.5-minute U.S. Geological Survey Topographic Quadrangle Map (Figure 1).

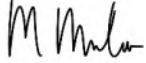
As part of the cultural resources study prepared for the proposed project, Dudek contacted the California Native American Heritage Commission (NAHC) to request a Sacred Lands File (SLF) search and a list of Native American individuals and/or tribal organizations who may have knowledge of cultural resources in or near the proposed project area. The NAHC emailed a response on November 9, 2021 which stated that the SLF search identified the presence of Native American cultural resources in the immediate project area.

The NAHC recommended that we contact you regarding your knowledge of the presence of cultural resources that may be impacted by this project. If you have any knowledge of cultural resources that may exist within or near the proposed project area, please contact me directly at (760) 846-5874 or at mmurillo@dudek.com within 30 days of receipt of this letter.

Please note that this letter does not constitute Assembly Bill (AB) 52 notification or initiation of consultation. AB 52 is a process between the lead agency and California Native American Tribes concerning potential impacts to tribal cultural resources. Tribes that wish to be notified of projects for the purposes of AB 52 must contact the lead agency, City of Oceanside, in writing (pursuant to Public Resources Code Section 21080.3.1 (b))

If you have any information or concerns pertaining to such information, please contact me by phone or email.

Respectfully,



Makayla Murillo, B.A.

Archaeologist

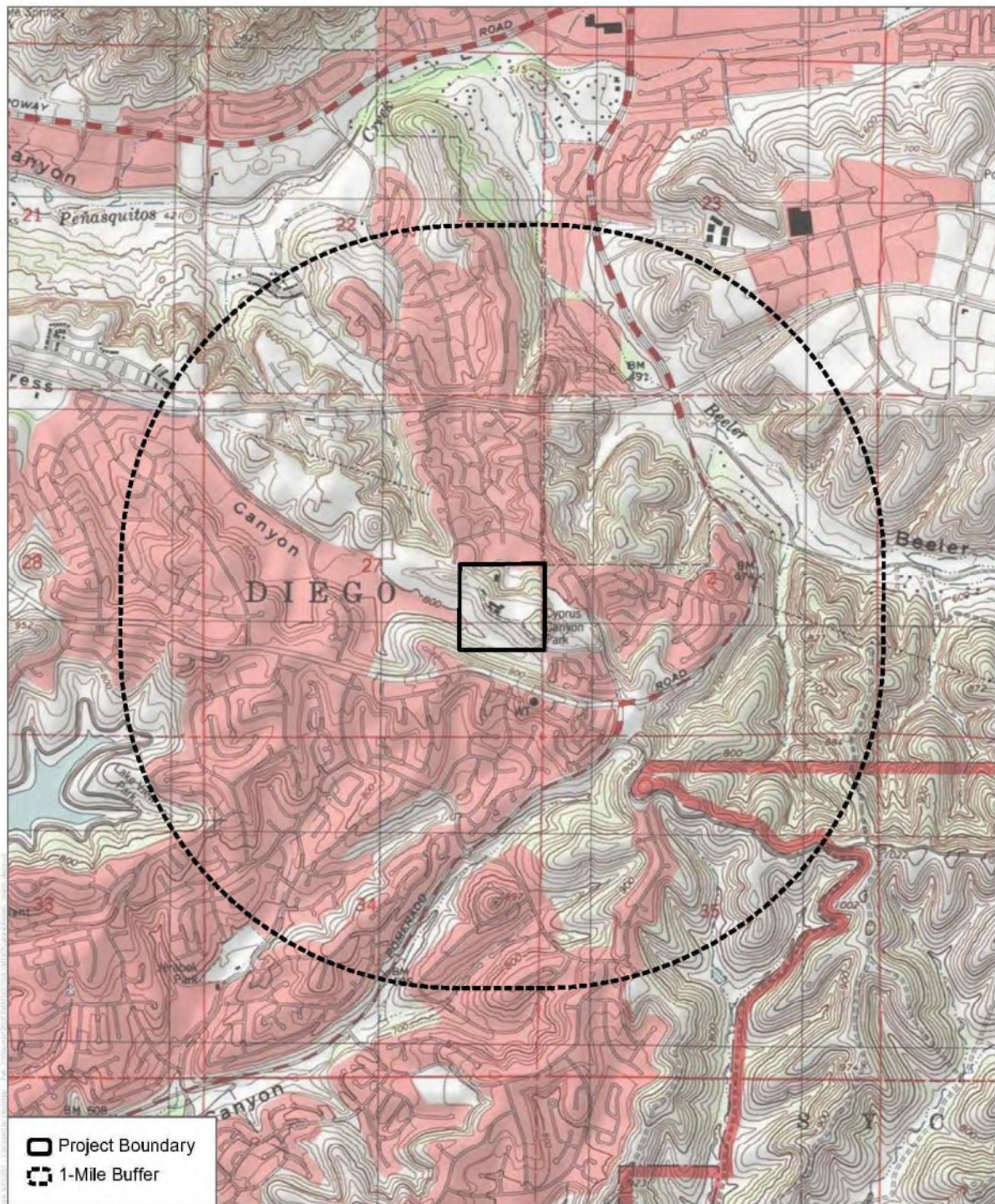
DUDEK

Phone: (760) 846-5874

Cell: (760) 805-4040

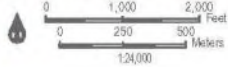
Email: mmurillo@dudek.com

Attachments: Figure 1. Regional project map.



SOURCE: USGS 7.5-Minute Series Poway Quadrangle

DUDEK



Records Search

Scripps Cypress Pointe Project, City of San Diego, California

November 9, 2021

Mr. Allen E. Lawson, Chairperson
San Pasqual Band of Diegueno Mission Indians
P.O. Box 365
Valley Center, CA 92082

Subject: Information Request for the Cypress Canyon/Renzuilli Estates Project, San Diego County, City of San Diego, California

Dear Mr. Lawson,

The Project proponent is proposing the demolition of an existing residence (and all associated structures) onsite and the construction of 100 single-family homes and 100 multi-family affordable income rental units in the northeast section of the City of San Diego, California. The Project also includes associated roads, sidewalks, and landscaping. The site is located at 11495 Cypress Canyon Road (APN 319-020-04-00) in the northeast section of the City of San Diego, California and is south of Scripps Poway Parkway and north of Spring Canyon Road. This project falls in within Section 27 of Township 14 South, Range 2 West of the Poway California 7.5-minute U.S. Geological Survey Topographic Quadrangle Map (Figure 1).

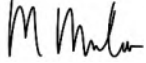
As part of the cultural resources study prepared for the proposed project, Dudek contacted the California Native American Heritage Commission (NAHC) to request a Sacred Lands File (SLF) search and a list of Native American individuals and/or tribal organizations who may have knowledge of cultural resources in or near the proposed project area. The NAHC emailed a response on November 9, 2021 which stated that the SLF search identified the presence of Native American cultural resources in the immediate project area.

The NAHC recommended that we contact you regarding your knowledge of the presence of cultural resources that may be impacted by this project. If you have any knowledge of cultural resources that may exist within or near the proposed project area, please contact me directly at (760) 846-5874 or at mmurillo@dudek.com within 30 days of receipt of this letter.

Please note that this letter does not constitute Assembly Bill (AB) 52 notification or initiation of consultation. AB 52 is a process between the lead agency and California Native American Tribes concerning potential impacts to tribal cultural resources. Tribes that wish to be notified of projects for the purposes of AB 52 must contact the lead agency, City of Oceanside, in writing (pursuant to Public Resources Code Section 21080.3.1 (b))

If you have any information or concerns pertaining to such information, please contact me by phone or email.

Respectfully,



Makayla Murillo, B.A.

Archaeologist

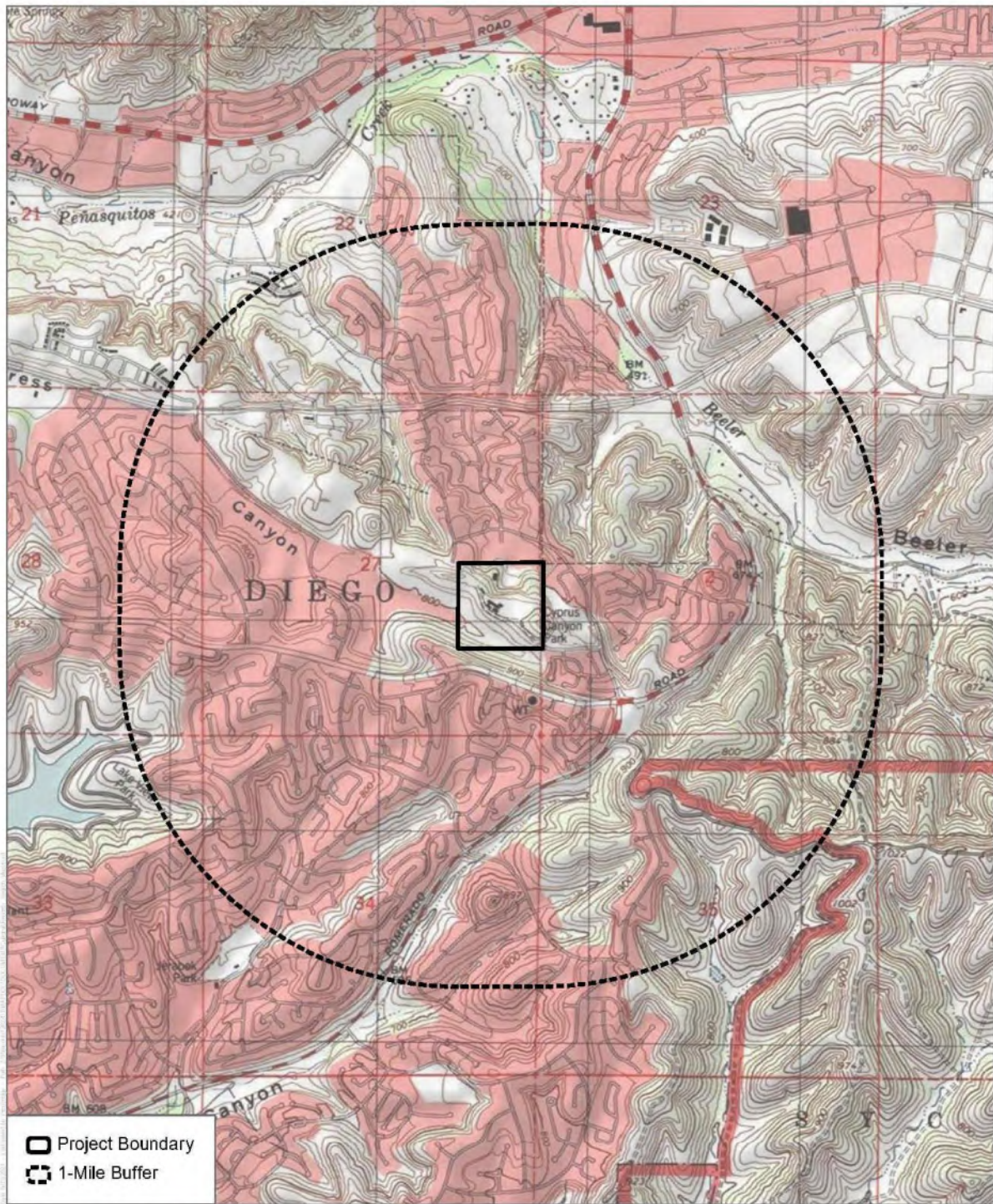
DUDEK

Phone: (760) 846-5874

Cell: (760) 805-4040

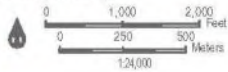
Email: mmurillo@dudek.com

Attachments: Figure 1. Regional project map.



SOURCE: USGS 7.5-Minute Series Poway Quadrangle

DUDEK



Records Search

Scripps Cypress Pointe Project, City of San Diego, California

November 9, 2021

Mr. Clint Linton, Director of Cultural Resources
Iipay Nation of Santa Ysabel
P.O. Box 507
Santa Ysabel, CA 92070

Subject: Information Request for the Cypress Canyon/Renzuilli Estates Project, San Diego County, City of San Diego, California

Dear Mr. Linton,

The Project proponent is proposing the demolition of an existing residence (and all associated structures) onsite and the construction of 100 single-family homes and 100 multi-family affordable income rental units in the northeast section of the City of San Diego, California. The Project also includes associated roads, sidewalks, and landscaping. The site is located at 11495 Cypress Canyon Road (APN 319-020-04-00) in the northeast section of the City of San Diego, California and is south of Scripps Poway Parkway and north of Spring Canyon Road. This project falls in within Section 27 of Township 14 South, Range 2 West of the Poway California 7.5-minute U.S. Geological Survey Topographic Quadrangle Map (Figure 1).

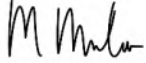
As part of the cultural resources study prepared for the proposed project, Dudek contacted the California Native American Heritage Commission (NAHC) to request a Sacred Lands File (SLF) search and a list of Native American individuals and/or tribal organizations who may have knowledge of cultural resources in or near the proposed project area. The NAHC emailed a response on November 9, 2021 which stated that the SLF search identified the presence of Native American cultural resources in the immediate project area.

The NAHC recommended that we contact you regarding your knowledge of the presence of cultural resources that may be impacted by this project. If you have any knowledge of cultural resources that may exist within or near the proposed project area, please contact me directly at (760) 846-5874 or at mmurillo@dudek.com within 30 days of receipt of this letter.

Please note that this letter does not constitute Assembly Bill (AB) 52 notification or initiation of consultation. AB 52 is a process between the lead agency and California Native American Tribes concerning potential impacts to tribal cultural resources. Tribes that wish to be notified of projects for the purposes of AB 52 must contact the lead agency, City of Oceanside, in writing (pursuant to Public Resources Code Section 21080.3.1 (b))

If you have any information or concerns pertaining to such information, please contact me by phone or email.

Respectfully,



Makayla Murillo, B.A.

Archaeologist

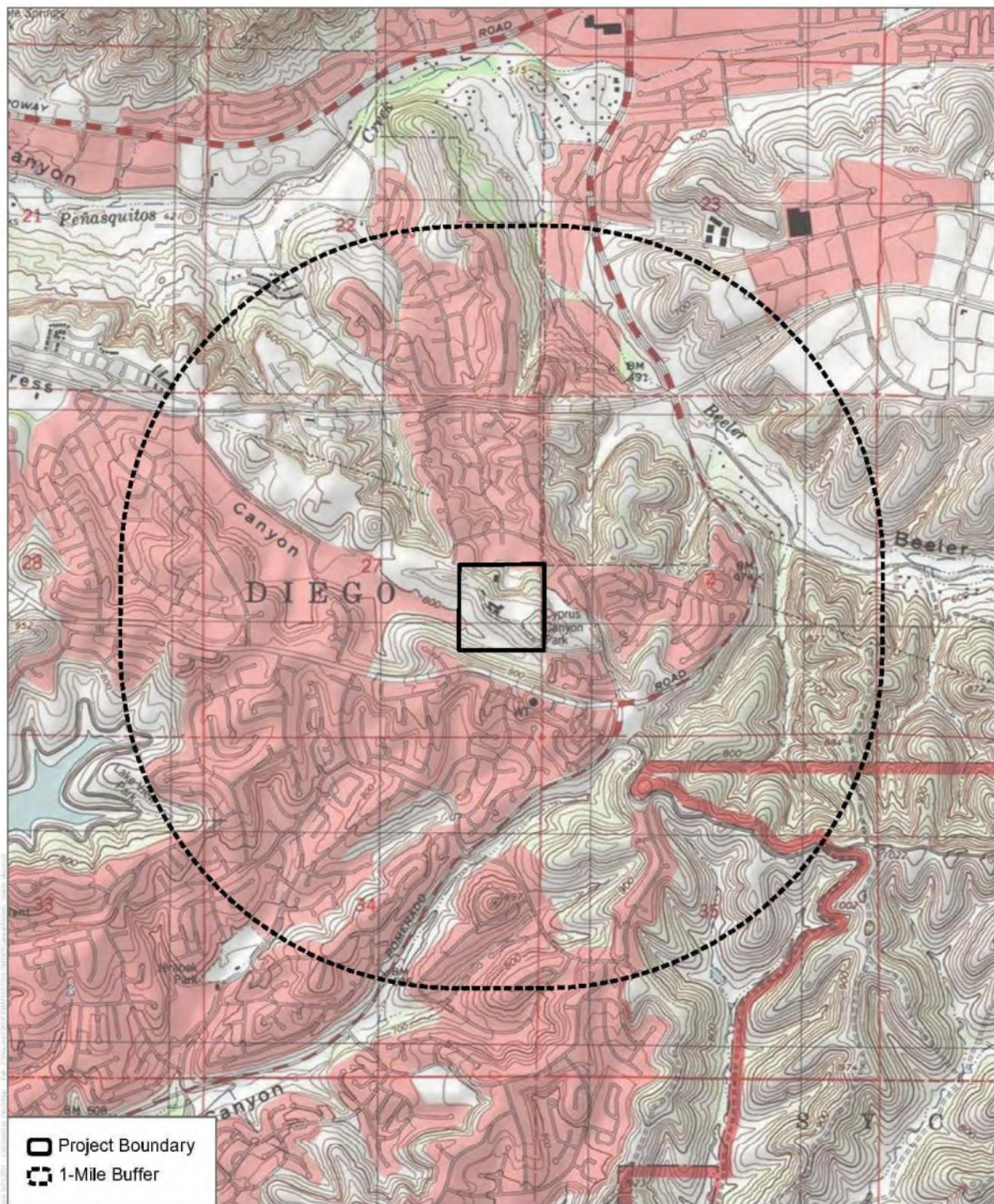
DUDEK

Phone: (760) 846-5874

Cell: (760) 805-4040

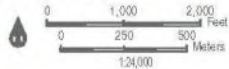
Email: mmurillo@dudek.com

Attachments: Figure 1. Regional project map.



SOURCE: USGS 7.5-Minute Series Poway Quadrangle

DUDEK



Records Search

Scripps Cypress Pointe Project, City of San Diego, California

November 9, 2021

Mr. Michael Linton, Chairperson
Mesa Grande Band of Diegueño Mission Indians
P.O. Box 270
Santa Ysabel, CA 92070

Subject: Information Request for the Cypress Canyon/Renzuilli Estates Project, San Diego County, City of San Diego, California

Dear Mr. Linton,

The Project proponent is proposing the demolition of an existing residence (and all associated structures) onsite and the construction of 100 single-family homes and 100 multi-family affordable income rental units in the northeast section of the City of San Diego, California. The Project also includes associated roads, sidewalks, and landscaping. The site is located at 11495 Cypress Canyon Road (APN 319-020-04-00) in the northeast section of the City of San Diego, California and is south of Scripps Poway Parkway and north of Spring Canyon Road. This project falls in within Section 27 of Township 14 South, Range 2 West of the Poway California 7.5-minute U.S. Geological Survey Topographic Quadrangle Map (Figure 1).

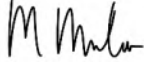
As part of the cultural resources study prepared for the proposed project, Dudek contacted the California Native American Heritage Commission (NAHC) to request a Sacred Lands File (SLF) search and a list of Native American individuals and/or tribal organizations who may have knowledge of cultural resources in or near the proposed project area. The NAHC emailed a response on November 9, 2021 which stated that the SLF search identified the presence of Native American cultural resources in the immediate project area.

The NAHC recommended that we contact you regarding your knowledge of the presence of cultural resources that may be impacted by this project. If you have any knowledge of cultural resources that may exist within or near the proposed project area, please contact me directly at (760) 846-5874 or at mmurillo@dudek.com within 30 days of receipt of this letter.

Please note that this letter does not constitute Assembly Bill (AB) 52 notification or initiation of consultation. AB 52 is a process between the lead agency and California Native American Tribes concerning potential impacts to tribal cultural resources. Tribes that wish to be notified of projects for the purposes of AB 52 must contact the lead agency, City of Oceanside, in writing (pursuant to Public Resources Code Section 21080.3.1 (b))

If you have any information or concerns pertaining to such information, please contact me by phone or email.

Respectfully,



Makayla Murillo, B.A.

Archaeologist

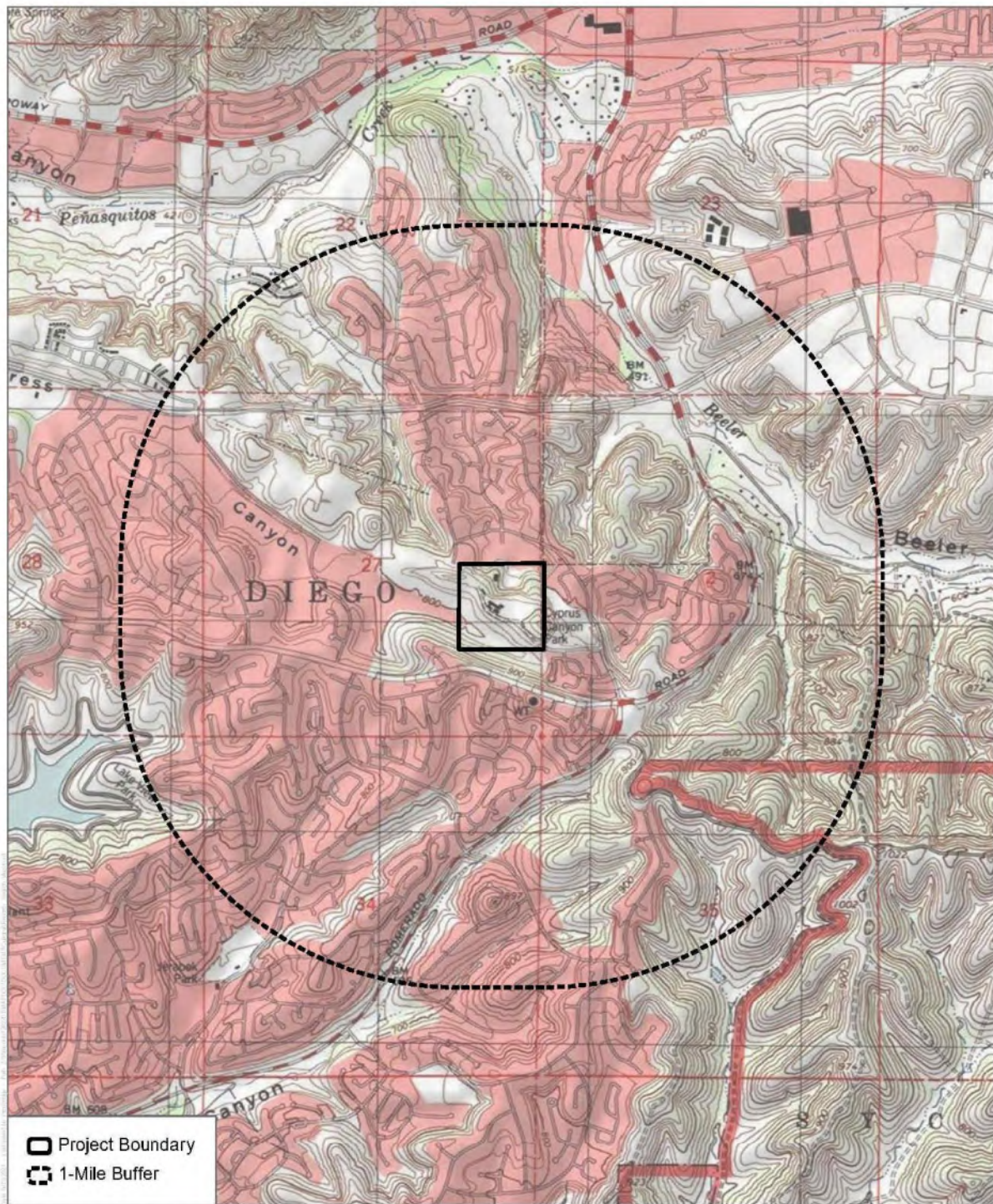
DUDEK

Phone: (760) 846-5874

Cell: (760) 805-4040

Email: mmurillo@dudek.com

Attachments: Figure 1. Regional project map.



DUDEK

Records Search
Scripps Cypress Pointe Project, City of San Diego, California

November 9, 2021

Ms. Carmen Lucas,
Kwaaymii Laguna Band of Mission Indians
P.O. Box 775
Pine Valley, CA 91962

Subject: Information Request for the Cypress Canyon/Renzuilli Estates Project, San Diego County, City of San Diego, California

Dear Ms. Lucas,

The Project proponent is proposing the demolition of an existing residence (and all associated structures) onsite and the construction of 100 single-family homes and 100 multi-family affordable income rental units in the northeast section of the City of San Diego, California. The Project also includes associated roads, sidewalks, and landscaping. The site is located at 11495 Cypress Canyon Road (APN 319-020-04-00) in the northeast section of the City of San Diego, California and is south of Scripps Poway Parkway and north of Spring Canyon Road. This project falls in within Section 27 of Township 14 South, Range 2 West of the Poway California 7.5-minute U.S. Geological Survey Topographic Quadrangle Map (Figure 1).

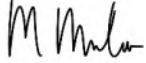
As part of the cultural resources study prepared for the proposed project, Dudek contacted the California Native American Heritage Commission (NAHC) to request a Sacred Lands File (SLF) search and a list of Native American individuals and/or tribal organizations who may have knowledge of cultural resources in or near the proposed project area. The NAHC emailed a response on November 9, 2021 which stated that the SLF search identified the presence of Native American cultural resources in the immediate project area.

The NAHC recommended that we contact you regarding your knowledge of the presence of cultural resources that may be impacted by this project. If you have any knowledge of cultural resources that may exist within or near the proposed project area, please contact me directly at (760) 846-5874 or at mmurillo@dudek.com within 30 days of receipt of this letter.

Please note that this letter does not constitute Assembly Bill (AB) 52 notification or initiation of consultation. AB 52 is a process between the lead agency and California Native American Tribes concerning potential impacts to tribal cultural resources. Tribes that wish to be notified of projects for the purposes of AB 52 must contact the lead agency, City of Oceanside, in writing (pursuant to Public Resources Code Section 21080.3.1 (b))

If you have any information or concerns pertaining to such information, please contact me by phone or email.

Respectfully,



Makayla Murillo, B.A.

Archaeologist

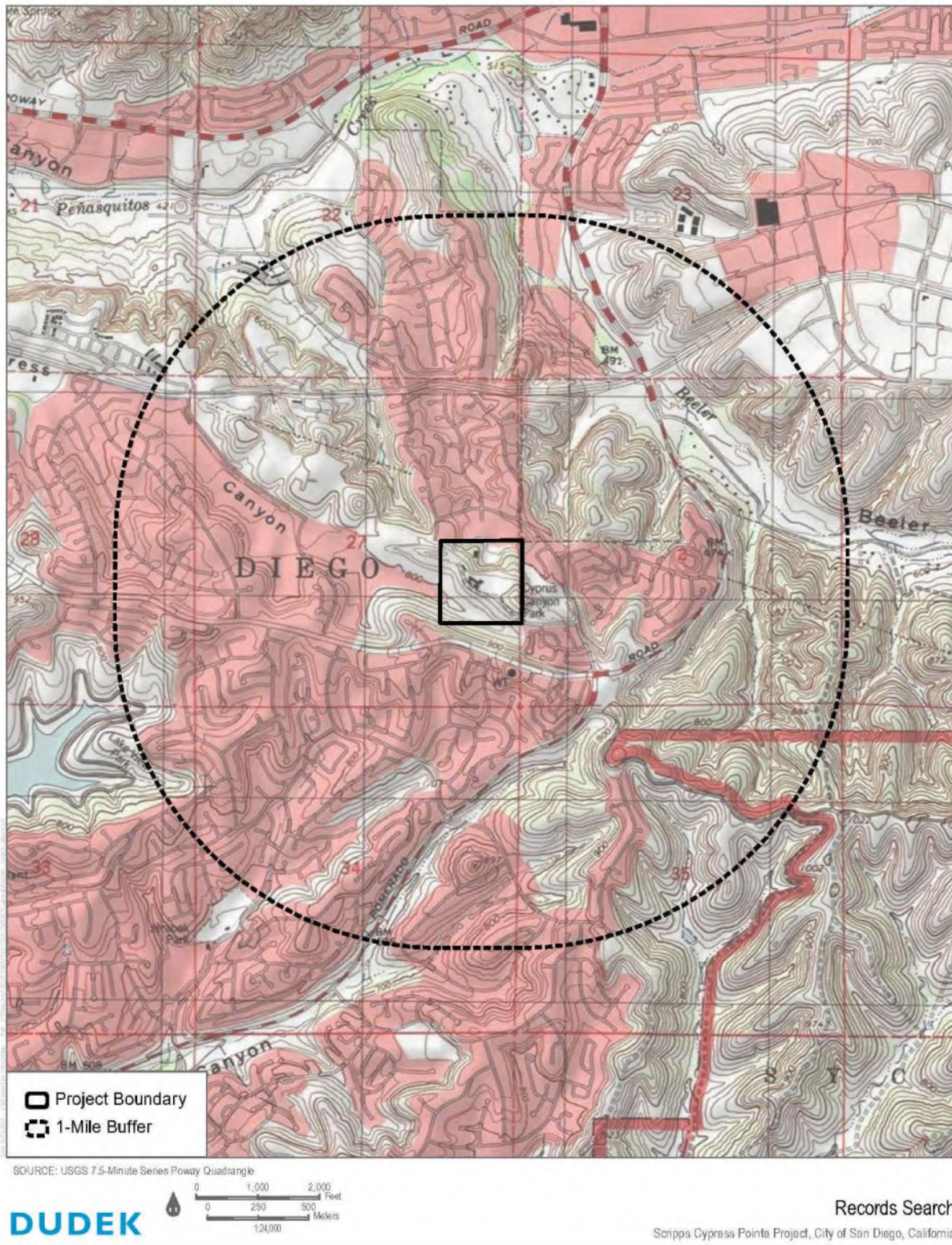
DUDEK

Phone: (760) 846-5874

Cell: (760) 805-4040

Email: mmurillo@dudek.com

Attachments: Figure 1. Regional project map.



November 9, 2021

Mr. Cody Martinez, Chairperson
Sycuan Band of the Kumeyaay Nation
1 Kwaaypaay Court
El Cajon, CA 92019

Subject: Information Request for the Cypress Canyon/Renzuilli Estates Project, San Diego County, City of San Diego, California

Dear Mr. Martinez,

The Project proponent is proposing the demolition of an existing residence (and all associated structures) onsite and the construction of 100 single-family homes and 100 multi-family affordable income rental units in the northeast section of the City of San Diego, California. The Project also includes associated roads, sidewalks, and landscaping. The site is located at 11495 Cypress Canyon Road (APN 319-020-04-00) in the northeast section of the City of San Diego, California and is south of Scripps Poway Parkway and north of Spring Canyon Road. This project falls in within Section 27 of Township 14 South, Range 2 West of the Poway California 7.5-minute U.S. Geological Survey Topographic Quadrangle Map (Figure 1).

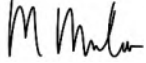
As part of the cultural resources study prepared for the proposed project, Dudek contacted the California Native American Heritage Commission (NAHC) to request a Sacred Lands File (SLF) search and a list of Native American individuals and/or tribal organizations who may have knowledge of cultural resources in or near the proposed project area. The NAHC emailed a response on November 9, 2021 which stated that the SLF search identified the presence of Native American cultural resources in the immediate project area.

The NAHC recommended that we contact you regarding your knowledge of the presence of cultural resources that may be impacted by this project. If you have any knowledge of cultural resources that may exist within or near the proposed project area, please contact me directly at (760) 846-5874 or at mmurillo@dudek.com within 30 days of receipt of this letter.

Please note that this letter does not constitute Assembly Bill (AB) 52 notification or initiation of consultation. AB 52 is a process between the lead agency and California Native American Tribes concerning potential impacts to tribal cultural resources. Tribes that wish to be notified of projects for the purposes of AB 52 must contact the lead agency, City of Oceanside, in writing (pursuant to Public Resources Code Section 21080.3.1 (b))

If you have any information or concerns pertaining to such information, please contact me by phone or email.

Respectfully,



Makayla Murillo, B.A.

Archaeologist

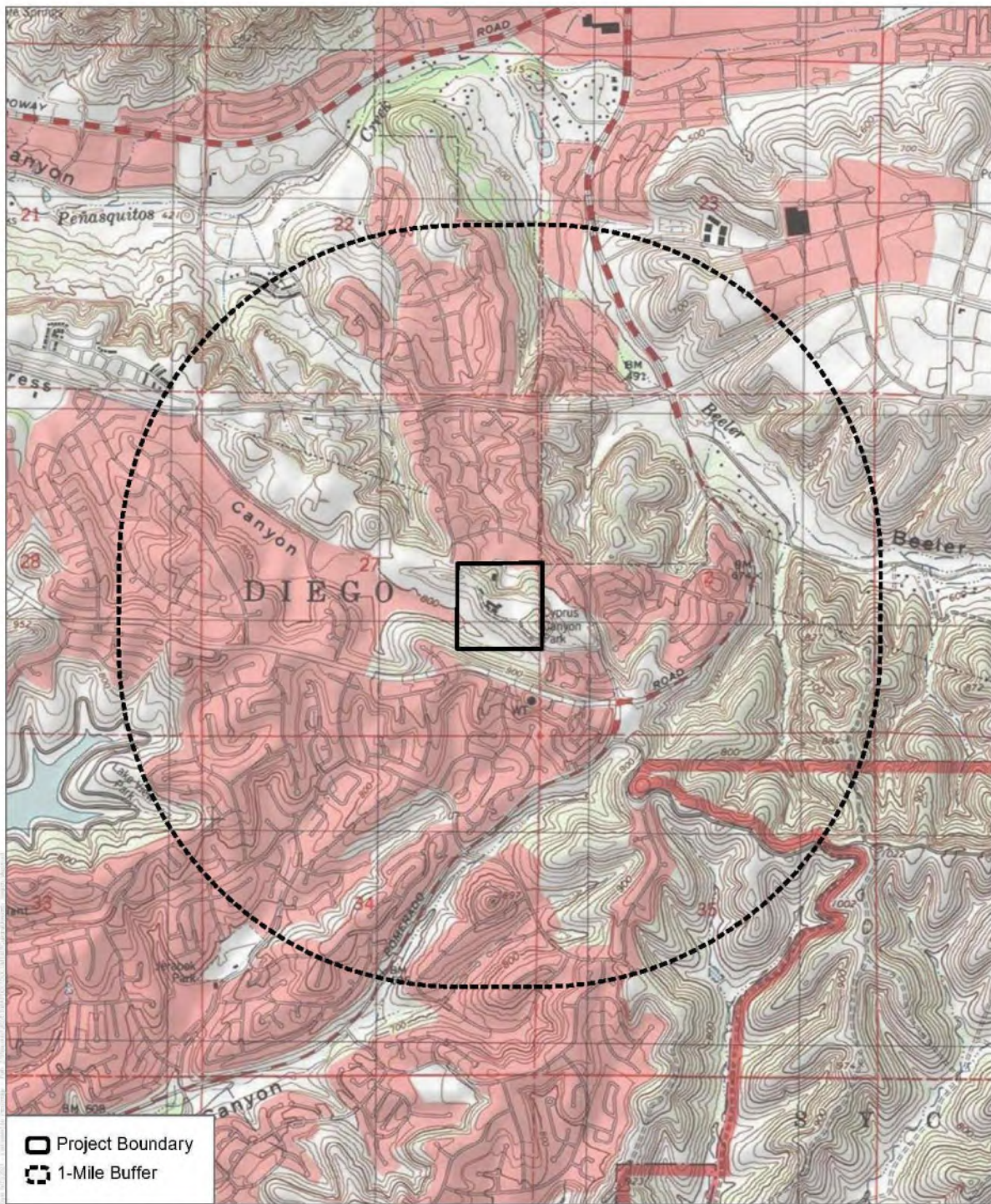
DUDEK

Phone: (760) 846-5874

Cell: (760) 805-4040

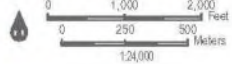
Email: mmurillo@dudek.com

Attachments: Figure 1. Regional project map.



SOURCE: USGS 7.5-Minute Series Poway Quadrangle

DUDEK



Records Search

Scipps Cypress Pointe Project, City of San Diego, California

November 9, 2021

Ms. Javaughn Miller, Tribal Administrator
La Posta Band of Diegueno Mission Indians
8 Crestwood Rd.
Boulevard, CA 91905

Subject: Information Request for the Cypress Canyon/Renzuilli Estates Project, San Diego County, City of San Diego, California

Dear Ms. Miller,

The Project proponent is proposing the demolition of an existing residence (and all associated structures) onsite and the construction of 100 single-family homes and 100 multi-family affordable income rental units in the northeast section of the City of San Diego, California. The Project also includes associated roads, sidewalks, and landscaping. The site is located at 11495 Cypress Canyon Road (APN 319-020-04-00) in the northeast section of the City of San Diego, California and is south of Scripps Poway Parkway and north of Spring Canyon Road. This project falls in within Section 27 of Township 14 South, Range 2 West of the Poway California 7.5-minute U.S. Geological Survey Topographic Quadrangle Map (Figure 1).

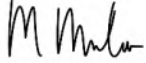
As part of the cultural resources study prepared for the proposed project, Dudek contacted the California Native American Heritage Commission (NAHC) to request a Sacred Lands File (SLF) search and a list of Native American individuals and/or tribal organizations who may have knowledge of cultural resources in or near the proposed project area. The NAHC emailed a response on November 9, 2021 which stated that the SLF search identified the presence of Native American cultural resources in the immediate project area.

The NAHC recommended that we contact you regarding your knowledge of the presence of cultural resources that may be impacted by this project. If you have any knowledge of cultural resources that may exist within or near the proposed project area, please contact me directly at (760) 846-5874 or at mmurillo@dudek.com within 30 days of receipt of this letter.

Please note that this letter does not constitute Assembly Bill (AB) 52 notification or initiation of consultation. AB 52 is a process between the lead agency and California Native American Tribes concerning potential impacts to tribal cultural resources. Tribes that wish to be notified of projects for the purposes of AB 52 must contact the lead agency, City of Oceanside, in writing (pursuant to Public Resources Code Section 21080.3.1 (b))

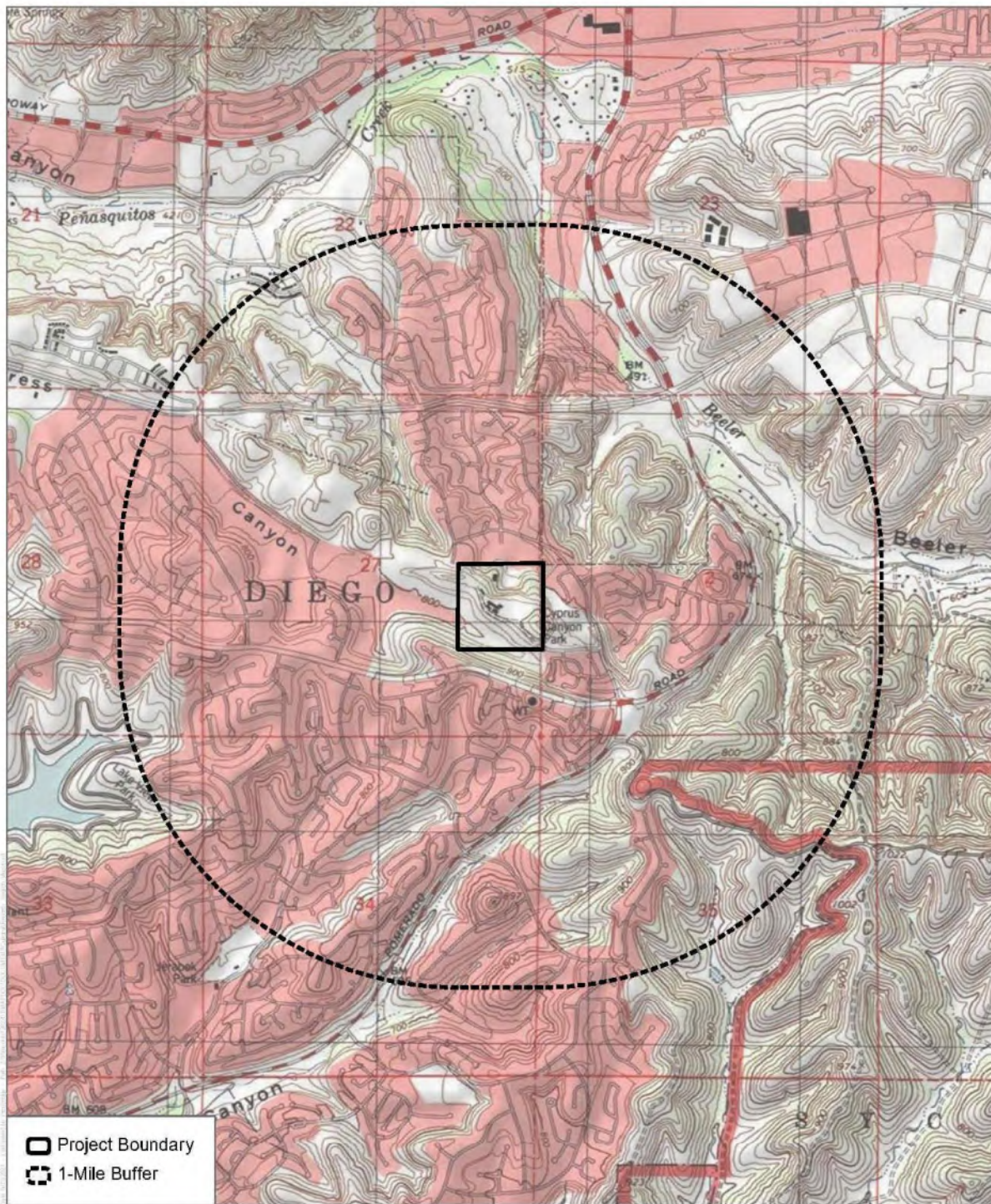
If you have any information or concerns pertaining to such information, please contact me by phone or email.

Respectfully,



Makayla Murillo, B.A.
Archaeologist
DUDEK
Phone: (760) 846-5874
Cell: (760) 805-4040
Email: mmurillo@dudek.com

Attachments: Figure 1. Regional project map.



November 9, 2021

Ms. Kristie Orosco, Resource Specialist
Sycuan Band of the Kumeyaay Nation
1 Kwaaypaay Court
El Cajon, CA 92019

Subject: Information Request for the Cypress Canyon/Renzuilli Estates Project, San Diego County, City of San Diego, California

Dear Ms. Orosco,

The Project proponent is proposing the demolition of an existing residence (and all associated structures) onsite and the construction of 100 single-family homes and 100 multi-family affordable income rental units in the northeast section of the City of San Diego, California. The Project also includes associated roads, sidewalks, and landscaping. The site is located at 11495 Cypress Canyon Road (APN 319-020-04-00) in the northeast section of the City of San Diego, California and is south of Scripps Poway Parkway and north of Spring Canyon Road. This project falls in within Section 27 of Township 14 South, Range 2 West of the Poway California 7.5-minute U.S. Geological Survey Topographic Quadrangle Map (Figure 1).

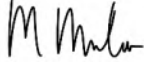
As part of the cultural resources study prepared for the proposed project, Dudek contacted the California Native American Heritage Commission (NAHC) to request a Sacred Lands File (SLF) search and a list of Native American individuals and/or tribal organizations who may have knowledge of cultural resources in or near the proposed project area. The NAHC emailed a response on November 9, 2021 which stated that the SLF search identified the presence of Native American cultural resources in the immediate project area.

The NAHC recommended that we contact you regarding your knowledge of the presence of cultural resources that may be impacted by this project. If you have any knowledge of cultural resources that may exist within or near the proposed project area, please contact me directly at (760) 846-5874 or at mmurillo@dudek.com within 30 days of receipt of this letter.

Please note that this letter does not constitute Assembly Bill (AB) 52 notification or initiation of consultation. AB 52 is a process between the lead agency and California Native American Tribes concerning potential impacts to tribal cultural resources. Tribes that wish to be notified of projects for the purposes of AB 52 must contact the lead agency, City of Oceanside, in writing (pursuant to Public Resources Code Section 21080.3.1 (b))

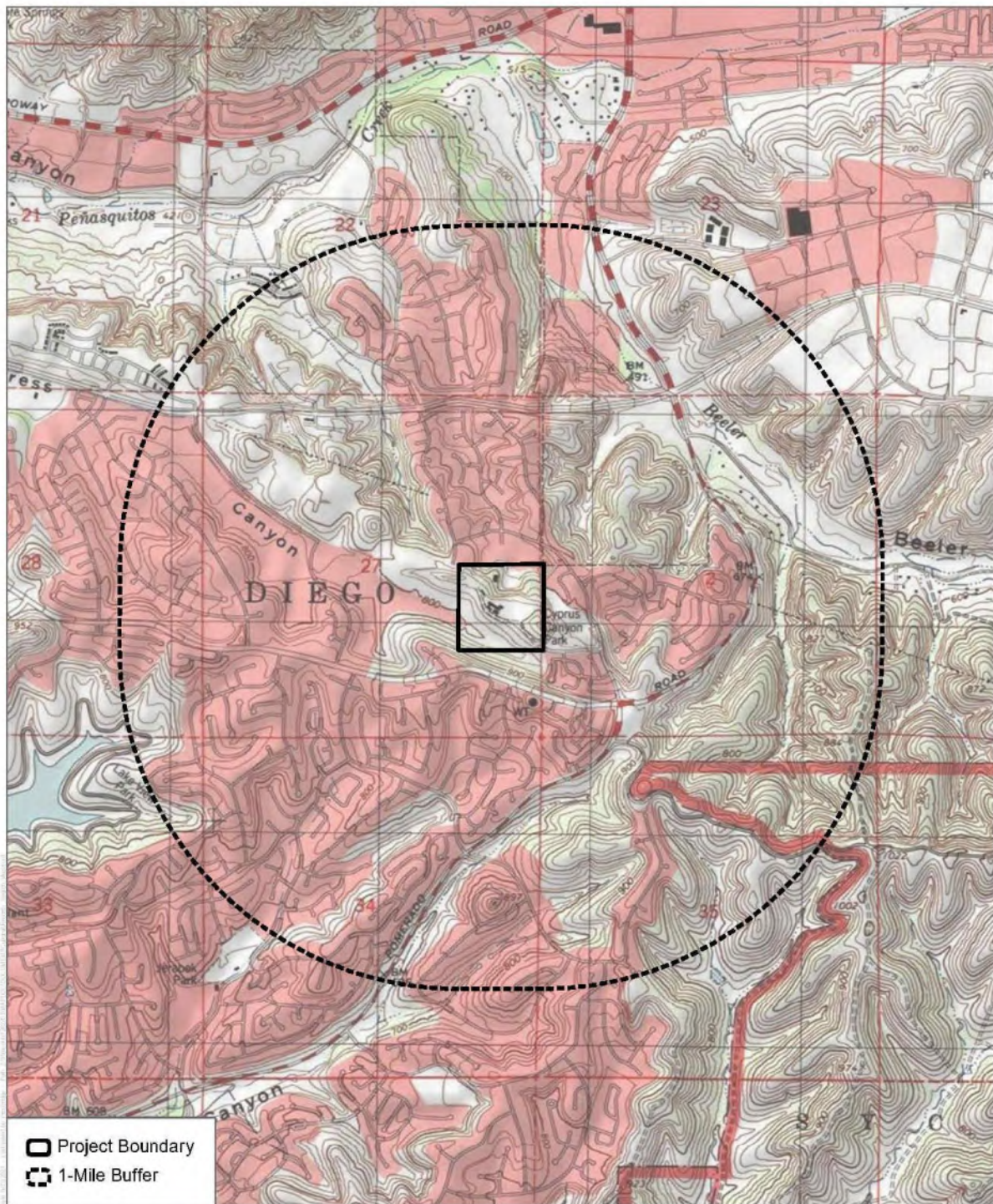
If you have any information or concerns pertaining to such information, please contact me by phone or email.

Respectfully,



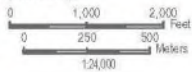
Makayla Murillo, B.A.
Archaeologist
DUDEK
Phone: (760) 846-5874
Cell: (760) 805-4040
Email: mmurillo@dudek.com

Attachments: Figure 1. Regional project map.



SOURCE: USGS 7.5-Minute Series Poway Quadrangle

DUDEK



Records Search

Scipps Cypress Pointe Project, City of San Diego, California

November 9, 2021

Ms. Rebecca Osuna, Chairperson
Inaja-Cosmit Band of Indians
2005 S. Escondido Blvd.
Escondido, CA 92025

Subject: Information Request for the Cypress Canyon/Renzuilli Estates Project, San Diego County, City of San Diego, California

Dear Ms. Osuna,

The Project proponent is proposing the demolition of an existing residence (and all associated structures) onsite and the construction of 100 single-family homes and 100 multi-family affordable income rental units in the northeast section of the City of San Diego, California. The Project also includes associated roads, sidewalks, and landscaping. The site is located at 11495 Cypress Canyon Road (APN 319-020-04-00) in the northeast section of the City of San Diego, California and is south of Scripps Poway Parkway and north of Spring Canyon Road. This project falls in within Section 27 of Township 14 South, Range 2 West of the Poway California 7.5-minute U.S. Geological Survey Topographic Quadrangle Map (Figure 1).

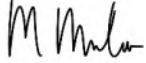
As part of the cultural resources study prepared for the proposed project, Dudek contacted the California Native American Heritage Commission (NAHC) to request a Sacred Lands File (SLF) search and a list of Native American individuals and/or tribal organizations who may have knowledge of cultural resources in or near the proposed project area. The NAHC emailed a response on November 9, 2021 which stated that the SLF search identified the presence of Native American cultural resources in the immediate project area.

The NAHC recommended that we contact you regarding your knowledge of the presence of cultural resources that may be impacted by this project. If you have any knowledge of cultural resources that may exist within or near the proposed project area, please contact me directly at (760) 846-5874 or at mmurillo@dudek.com within 30 days of receipt of this letter.

Please note that this letter does not constitute Assembly Bill (AB) 52 notification or initiation of consultation. AB 52 is a process between the lead agency and California Native American Tribes concerning potential impacts to tribal cultural resources. Tribes that wish to be notified of projects for the purposes of AB 52 must contact the lead agency, City of Oceanside, in writing (pursuant to Public Resources Code Section 21080.3.1 (b))

If you have any information or concerns pertaining to such information, please contact me by phone or email.

Respectfully,



Makayla Murillo, B.A.

Archaeologist

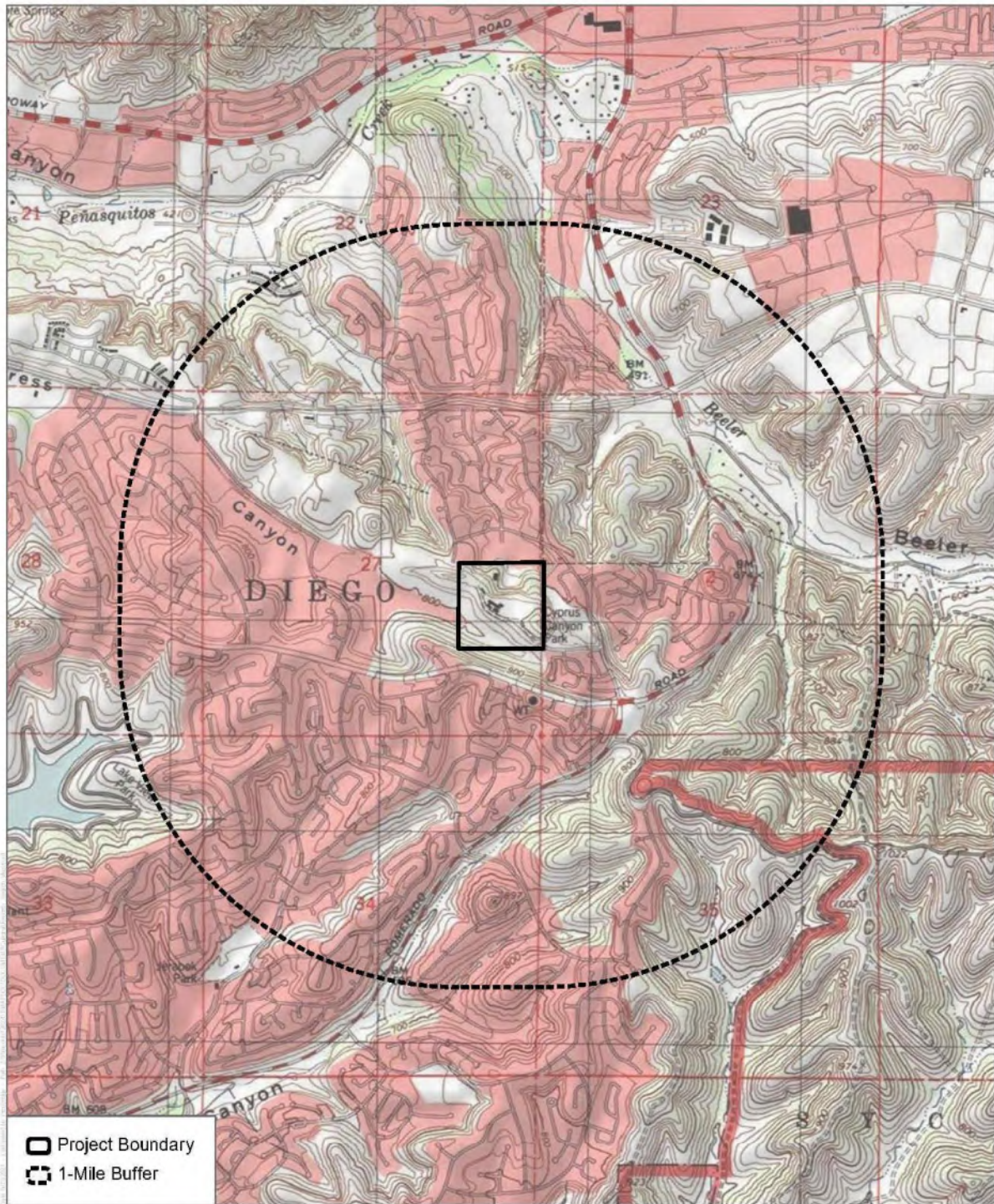
DUDEK

Phone: (760) 846-5874

Cell: (760) 805-4040

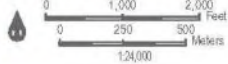
Email: mmurillo@dudek.com

Attachments: Figure 1. Regional project map.



SOURCE: USGS 7.5-Minute Series Poway Quadrangle

DUDEK



Records Search

Scripps Cypress Pointe Project, City of San Diego, California

November 9, 2021

Ms. Gwendolyn Parada, Chairperson
La Posta Band of Diegueno Mission Indians
8 Crestwood Rd.
Boulevard, CA 91905

Subject: Information Request for the Cypress Canyon/Renzuilli Estates Project, San Diego County, City of San Diego, California

Dear Ms. Parada,

The Project proponent is proposing the demolition of an existing residence (and all associated structures) onsite and the construction of 100 single-family homes and 100 multi-family affordable income rental units in the northeast section of the City of San Diego, California. The Project also includes associated roads, sidewalks, and landscaping. The site is located at 11495 Cypress Canyon Road (APN 319-020-04-00) in the northeast section of the City of San Diego, California and is south of Scripps Poway Parkway and north of Spring Canyon Road. This project falls in within Section 27 of Township 14 South, Range 2 West of the Poway California 7.5-minute U.S. Geological Survey Topographic Quadrangle Map (Figure 1).

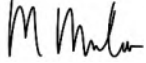
As part of the cultural resources study prepared for the proposed project, Dudek contacted the California Native American Heritage Commission (NAHC) to request a Sacred Lands File (SLF) search and a list of Native American individuals and/or tribal organizations who may have knowledge of cultural resources in or near the proposed project area. The NAHC emailed a response on November 9, 2021 which stated that the SLF search identified the presence of Native American cultural resources in the immediate project area.

The NAHC recommended that we contact you regarding your knowledge of the presence of cultural resources that may be impacted by this project. If you have any knowledge of cultural resources that may exist within or near the proposed project area, please contact me directly at (760) 846-5874 or at mmurillo@dudek.com within 30 days of receipt of this letter.

Please note that this letter does not constitute Assembly Bill (AB) 52 notification or initiation of consultation. AB 52 is a process between the lead agency and California Native American Tribes concerning potential impacts to tribal cultural resources. Tribes that wish to be notified of projects for the purposes of AB 52 must contact the lead agency, City of Oceanside, in writing (pursuant to Public Resources Code Section 21080.3.1 (b))

If you have any information or concerns pertaining to such information, please contact me by phone or email.

Respectfully,



Makayla Murillo, B.A.

Archaeologist

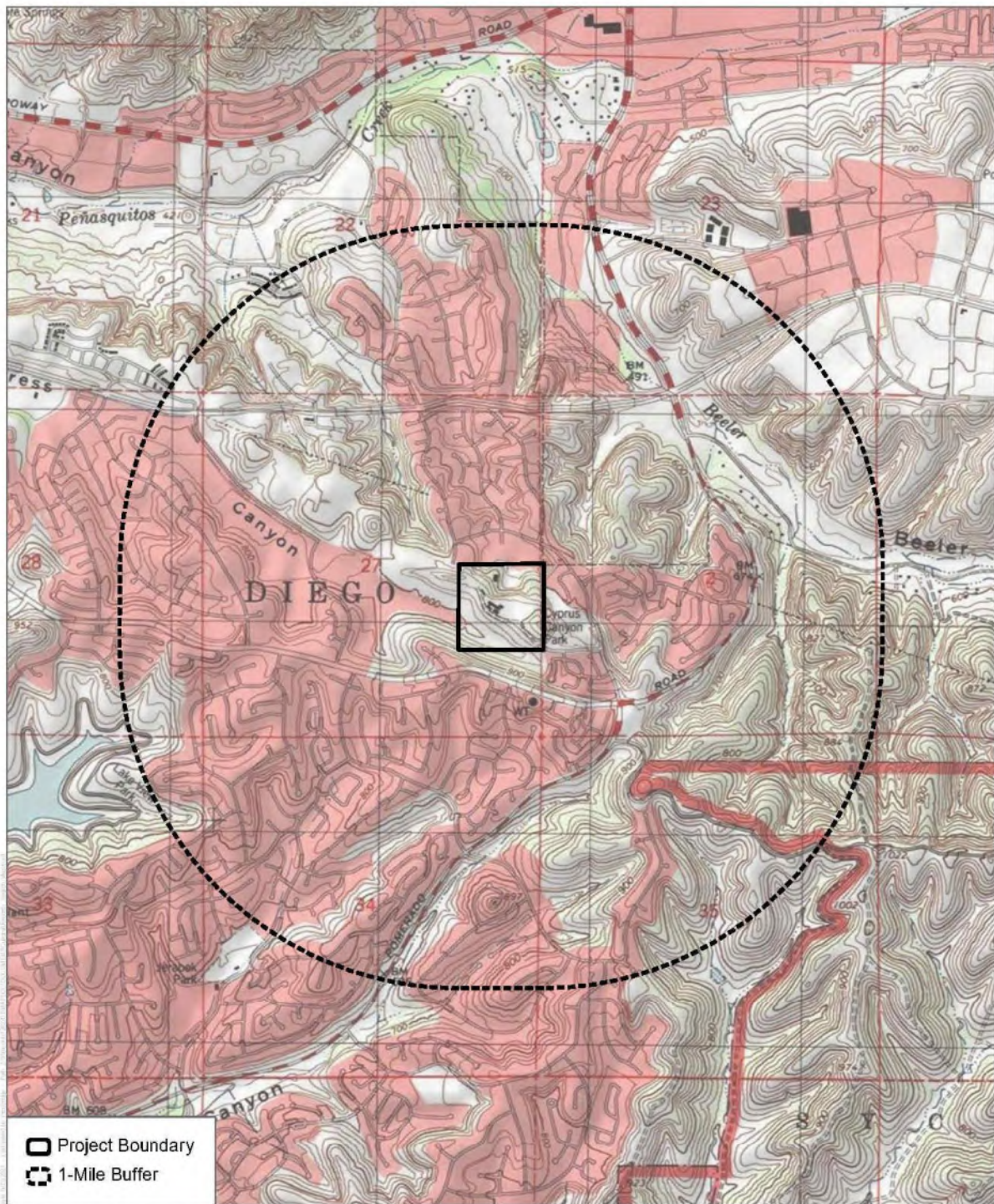
DUDEK

Phone: (760) 846-5874

Cell: (760) 805-4040

Email: mmurillo@dudek.com

Attachments: Figure 1. Regional project map.



November 9, 2021

Mr. Virgil Perez, Chairperson
Iipay Nation of Santa Ysabel
P.O. Box 130
Santa Ysabel, CA 92070

Subject: Information Request for the Cypress Canyon/Renzuilli Estates Project, San Diego County, City of San Diego, California

Dear Mr. Perez,

The Project proponent is proposing the demolition of an existing residence (and all associated structures) onsite and the construction of 100 single-family homes and 100 multi-family affordable income rental units in the northeast section of the City of San Diego, California. The Project also includes associated roads, sidewalks, and landscaping. The site is located at 11495 Cypress Canyon Road (APN 319-020-04-00) in the northeast section of the City of San Diego, California and is south of Scripps Poway Parkway and north of Spring Canyon Road. This project falls in within Section 27 of Township 14 South, Range 2 West of the Poway California 7.5-minute U.S. Geological Survey Topographic Quadrangle Map (Figure 1).

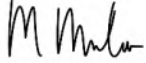
As part of the cultural resources study prepared for the proposed project, Dudek contacted the California Native American Heritage Commission (NAHC) to request a Sacred Lands File (SLF) search and a list of Native American individuals and/or tribal organizations who may have knowledge of cultural resources in or near the proposed project area. The NAHC emailed a response on November 9, 2021 which stated that the SLF search identified the presence of Native American cultural resources in the immediate project area.

The NAHC recommended that we contact you regarding your knowledge of the presence of cultural resources that may be impacted by this project. If you have any knowledge of cultural resources that may exist within or near the proposed project area, please contact me directly at (760) 846-5874 or at mmurillo@dudek.com within 30 days of receipt of this letter.

Please note that this letter does not constitute Assembly Bill (AB) 52 notification or initiation of consultation. AB 52 is a process between the lead agency and California Native American Tribes concerning potential impacts to tribal cultural resources. Tribes that wish to be notified of projects for the purposes of AB 52 must contact the lead agency, City of Oceanside, in writing (pursuant to Public Resources Code Section 21080.3.1 (b))

If you have any information or concerns pertaining to such information, please contact me by phone or email.

Respectfully,



Makayla Murillo, B.A.

Archaeologist

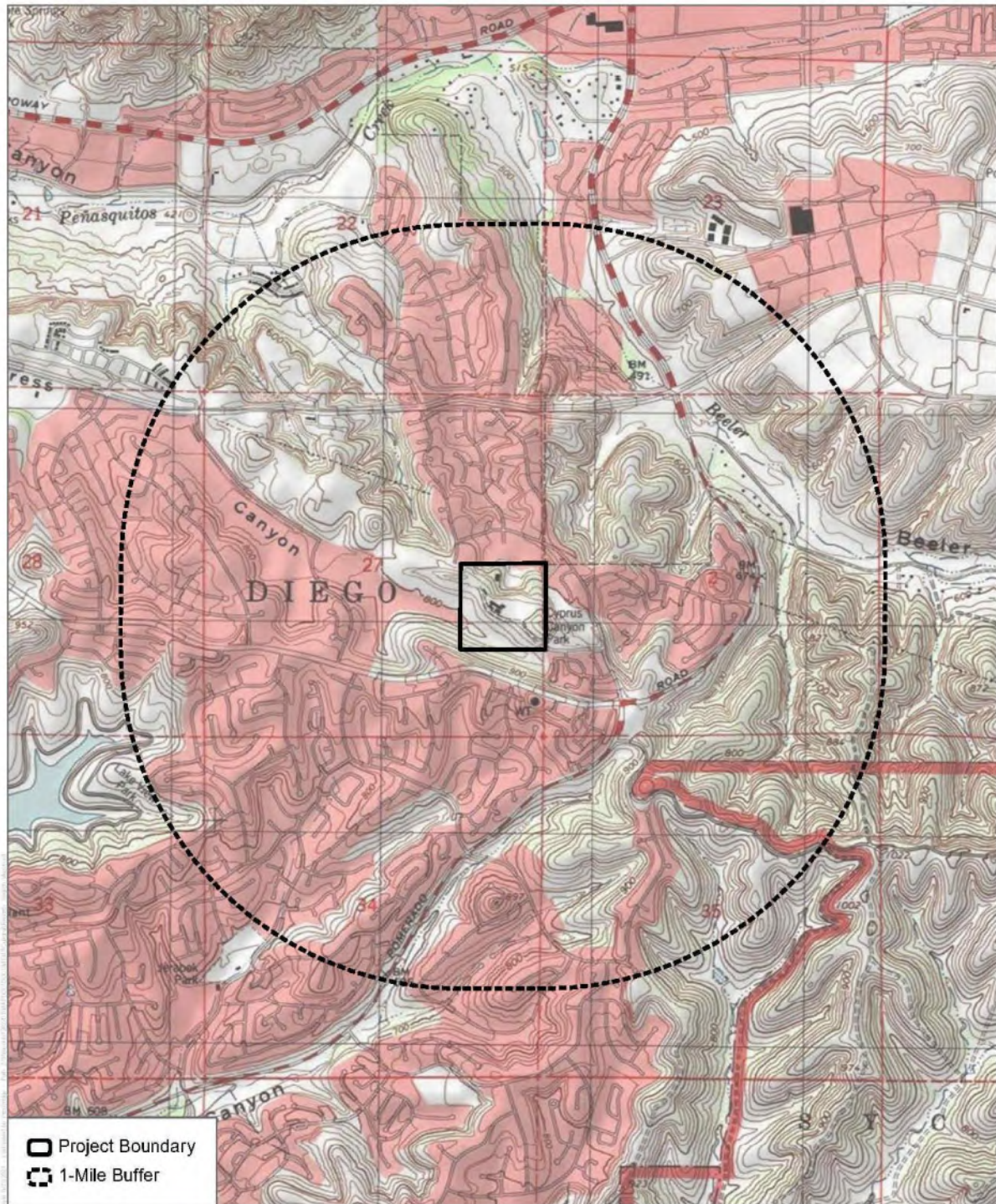
DUDEK

Phone: (760) 846-5874

Cell: (760) 805-4040

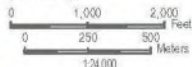
Email: mmurillo@dudek.com

Attachments: Figure 1. Regional project map.



SOURCE: USGS 7.5-Minute Series Poway Quadrangle

DUDEK



Records Search

Scripps Cypress Pointa Project, City of San Diego, California

November 9, 2021

Mr. Ernest Pingleton, Tribal Historic Officer
Viejas Band of Kumeyaay Indians
1 Viejas Grade Rd.
Alpine, CA 91901

Subject: Information Request for the Cypress Canyon/Renzuilli Estates Project, San Diego County, City of San Diego, California

Dear Mr. Pingleton,

The Project proponent is proposing the demolition of an existing residence (and all associated structures) onsite and the construction of 100 single-family homes and 100 multi-family affordable income rental units in the northeast section of the City of San Diego, California. The Project also includes associated roads, sidewalks, and landscaping. The site is located at 11495 Cypress Canyon Road (APN 319-020-04-00) in the northeast section of the City of San Diego, California and is south of Scripps Poway Parkway and north of Spring Canyon Road. This project falls in within Section 27 of Township 14 South, Range 2 West of the Poway California 7.5-minute U.S. Geological Survey Topographic Quadrangle Map (Figure 1).

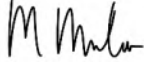
As part of the cultural resources study prepared for the proposed project, Dudek contacted the California Native American Heritage Commission (NAHC) to request a Sacred Lands File (SLF) search and a list of Native American individuals and/or tribal organizations who may have knowledge of cultural resources in or near the proposed project area. The NAHC emailed a response on November 9, 2021 which stated that the SLF search identified the presence of Native American cultural resources in the immediate project area.

The NAHC recommended that we contact you regarding your knowledge of the presence of cultural resources that may be impacted by this project. If you have any knowledge of cultural resources that may exist within or near the proposed project area, please contact me directly at (760) 846-5874 or at mmurillo@dudek.com within 30 days of receipt of this letter.

Please note that this letter does not constitute Assembly Bill (AB) 52 notification or initiation of consultation. AB 52 is a process between the lead agency and California Native American Tribes concerning potential impacts to tribal cultural resources. Tribes that wish to be notified of projects for the purposes of AB 52 must contact the lead agency, City of Oceanside, in writing (pursuant to Public Resources Code Section 21080.3.1 (b))

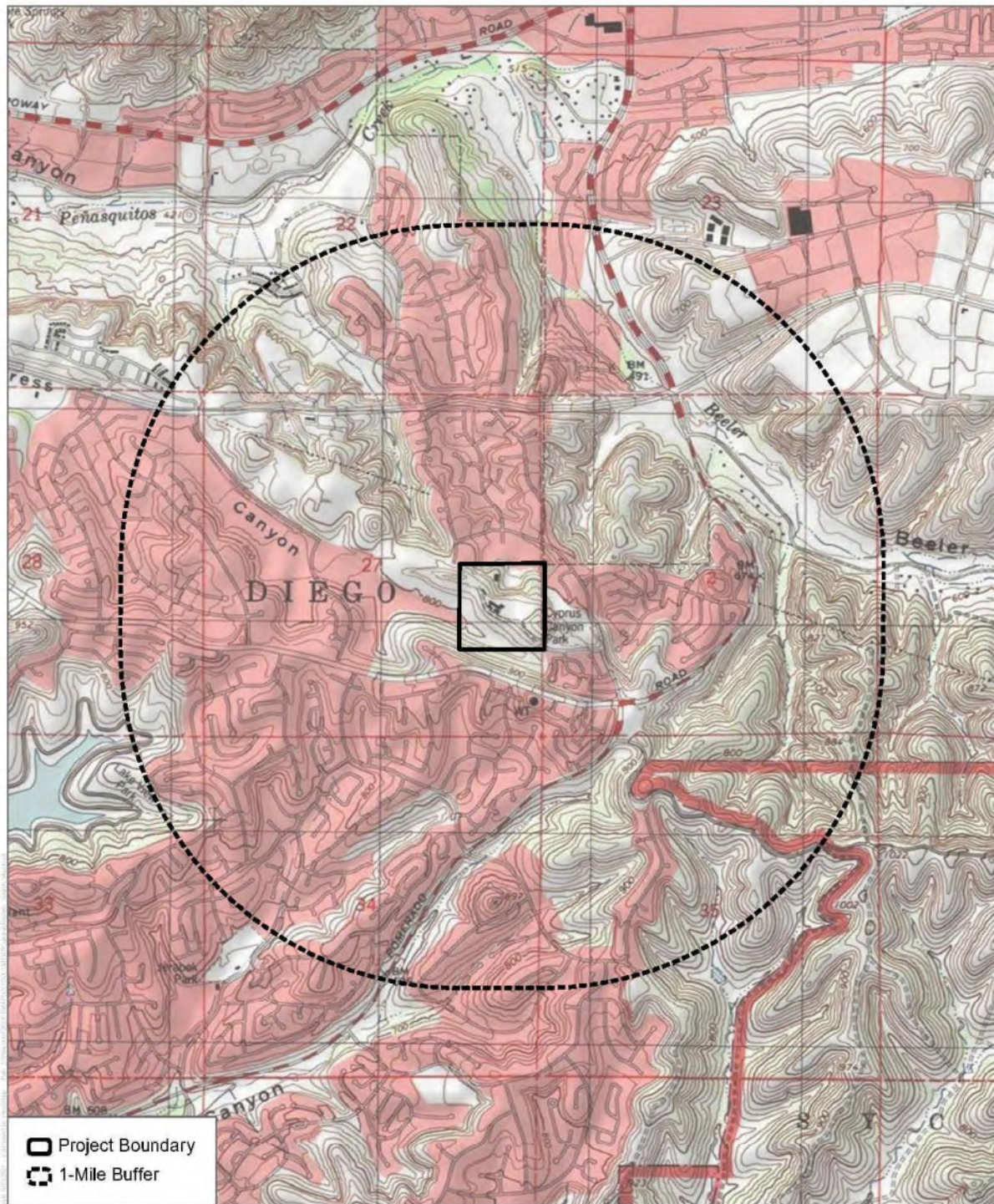
If you have any information or concerns pertaining to such information, please contact me by phone or email.

Respectfully,



Makayla Murillo, B.A.
Archaeologist
DUDEK
Phone: (760) 846-5874
Cell: (760) 805-4040
Email: mmurillo@dudek.com

Attachments: Figure 1. Regional project map.



November 9, 2021

Mr. Robert Pinto, Chairperson
Ewiaapaayp Tribe
4054 Willow Rd.
Alpine, CA 91901

Subject: Information Request for the Cypress Canyon/Renzuilli Estates Project, San Diego County, City of San Diego, California

Dear Mr. Pinto,

The Project proponent is proposing the demolition of an existing residence (and all associated structures) onsite and the construction of 100 single-family homes and 100 multi-family affordable income rental units in the northeast section of the City of San Diego, California. The Project also includes associated roads, sidewalks, and landscaping. The site is located at 11495 Cypress Canyon Road (APN 319-020-04-00) in the northeast section of the City of San Diego, California and is south of Scripps Poway Parkway and north of Spring Canyon Road. This project falls in within Section 27 of Township 14 South, Range 2 West of the Poway California 7.5-minute U.S. Geological Survey Topographic Quadrangle Map (Figure 1).

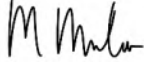
As part of the cultural resources study prepared for the proposed project, Dudek contacted the California Native American Heritage Commission (NAHC) to request a Sacred Lands File (SLF) search and a list of Native American individuals and/or tribal organizations who may have knowledge of cultural resources in or near the proposed project area. The NAHC emailed a response on November 9, 2021 which stated that the SLF search identified the presence of Native American cultural resources in the immediate project area.

The NAHC recommended that we contact you regarding your knowledge of the presence of cultural resources that may be impacted by this project. If you have any knowledge of cultural resources that may exist within or near the proposed project area, please contact me directly at (760) 846-5874 or at mmurillo@dudek.com within 30 days of receipt of this letter.

Please note that this letter does not constitute Assembly Bill (AB) 52 notification or initiation of consultation. AB 52 is a process between the lead agency and California Native American Tribes concerning potential impacts to tribal cultural resources. Tribes that wish to be notified of projects for the purposes of AB 52 must contact the lead agency, City of Oceanside, in writing (pursuant to Public Resources Code Section 21080.3.1 (b))

If you have any information or concerns pertaining to such information, please contact me by phone or email.

Respectfully,



Makayla Murillo, B.A.

Archaeologist

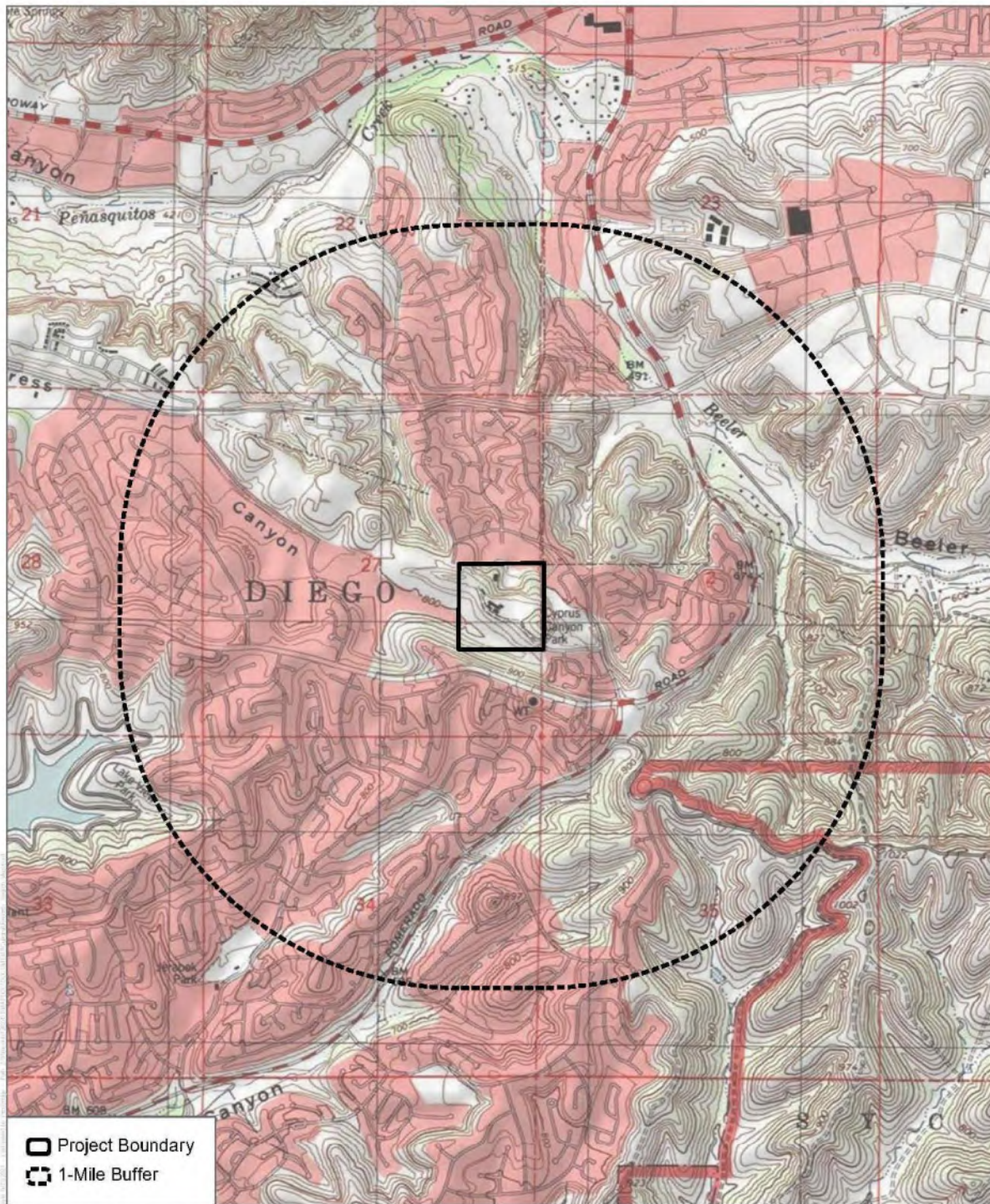
DUDEK

Phone: (760) 846-5874

Cell: (760) 805-4040

Email: mmurillo@dudek.com

Attachments: Figure 1. Regional project map.



SOURCE: USGS 7.5-Minute Series Poway Quadrangle



DUDEK

Records Search

Scripps Cypress Pointe Project, City of San Diego, California

November 9, 2021

Ms. Erica Pinto, Chairperson
Jamul Indian Village
P.O. Box 612
Jamul, CA 91935

Subject: Information Request for the Cypress Canyon/Renzuilli Estates Project, San Diego County, City of San Diego, California

Dear Ms. Pinto,

The Project proponent is proposing the demolition of an existing residence (and all associated structures) onsite and the construction of 100 single-family homes and 100 multi-family affordable income rental units in the northeast section of the City of San Diego, California. The Project also includes associated roads, sidewalks, and landscaping. The site is located at 11495 Cypress Canyon Road (APN 319-020-04-00) in the northeast section of the City of San Diego, California and is south of Scripps Poway Parkway and north of Spring Canyon Road. This project falls in within Section 27 of Township 14 South, Range 2 West of the Poway California 7.5-minute U.S. Geological Survey Topographic Quadrangle Map (Figure 1).

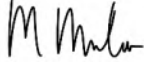
As part of the cultural resources study prepared for the proposed project, Dudek contacted the California Native American Heritage Commission (NAHC) to request a Sacred Lands File (SLF) search and a list of Native American individuals and/or tribal organizations who may have knowledge of cultural resources in or near the proposed project area. The NAHC emailed a response on November 9, 2021 which stated that the SLF search identified the presence of Native American cultural resources in the immediate project area.

The NAHC recommended that we contact you regarding your knowledge of the presence of cultural resources that may be impacted by this project. If you have any knowledge of cultural resources that may exist within or near the proposed project area, please contact me directly at (760) 846-5874 or at mmurillo@dudek.com within 30 days of receipt of this letter.

Please note that this letter does not constitute Assembly Bill (AB) 52 notification or initiation of consultation. AB 52 is a process between the lead agency and California Native American Tribes concerning potential impacts to tribal cultural resources. Tribes that wish to be notified of projects for the purposes of AB 52 must contact the lead agency, City of Oceanside, in writing (pursuant to Public Resources Code Section 21080.3.1 (b))

If you have any information or concerns pertaining to such information, please contact me by phone or email.

Respectfully,



Makayla Murillo, B.A.

Archaeologist

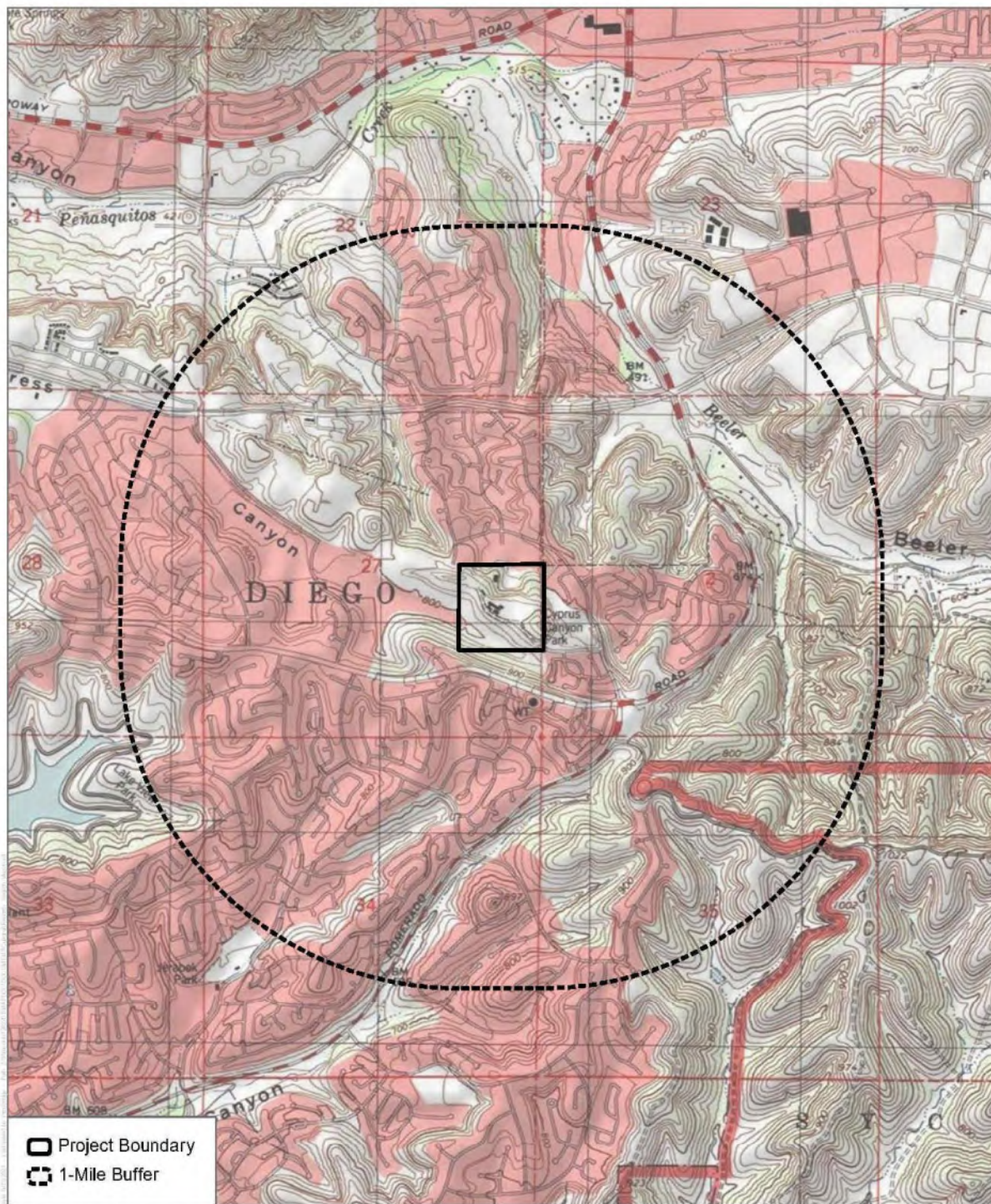
DUDEK

Phone: (760) 846-5874

Cell: (760) 805-4040

Email: mmurillo@dudek.com

Attachments: Figure 1. Regional project map.



SOURCE: USGS 7.5-Minute Series Poway Quadrangle



DUDEK

Records Search

Scripps Cypress Pointa Project, City of San Diego, California

November 9, 2021

Mr. Edwin (Thorpe) Romero, Chairperson
Barona Group of the Capitan Grande
1095 Barona Road
Lakeside, CA 92040

Subject: Information Request for the Cypress Canyon/Renzuilli Estates Project, San Diego County, City of San Diego, California

Dear Mr. Romero,

The Project proponent is proposing the demolition of an existing residence (and all associated structures) onsite and the construction of 100 single-family homes and 100 multi-family affordable income rental units in the northeast section of the City of San Diego, California. The Project also includes associated roads, sidewalks, and landscaping. The site is located at 11495 Cypress Canyon Road (APN 319-020-04-00) in the northeast section of the City of San Diego, California and is south of Scripps Poway Parkway and north of Spring Canyon Road. This project falls in within Section 27 of Township 14 South, Range 2 West of the Poway California 7.5-minute U.S. Geological Survey Topographic Quadrangle Map (Figure 1).

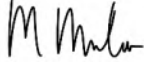
As part of the cultural resources study prepared for the proposed project, Dudek contacted the California Native American Heritage Commission (NAHC) to request a Sacred Lands File (SLF) search and a list of Native American individuals and/or tribal organizations who may have knowledge of cultural resources in or near the proposed project area. The NAHC emailed a response on November 9, 2021 which stated that the SLF search identified the presence of Native American cultural resources in the immediate project area.

The NAHC recommended that we contact you regarding your knowledge of the presence of cultural resources that may be impacted by this project. If you have any knowledge of cultural resources that may exist within or near the proposed project area, please contact me directly at (760) 846-5874 or at mmurillo@dudek.com within 30 days of receipt of this letter.

Please note that this letter does not constitute Assembly Bill (AB) 52 notification or initiation of consultation. AB 52 is a process between the lead agency and California Native American Tribes concerning potential impacts to tribal cultural resources. Tribes that wish to be notified of projects for the purposes of AB 52 must contact the lead agency, City of Oceanside, in writing (pursuant to Public Resources Code Section 21080.3.1 (b))

If you have any information or concerns pertaining to such information, please contact me by phone or email.

Respectfully,



Makayla Murillo, B.A.

Archaeologist

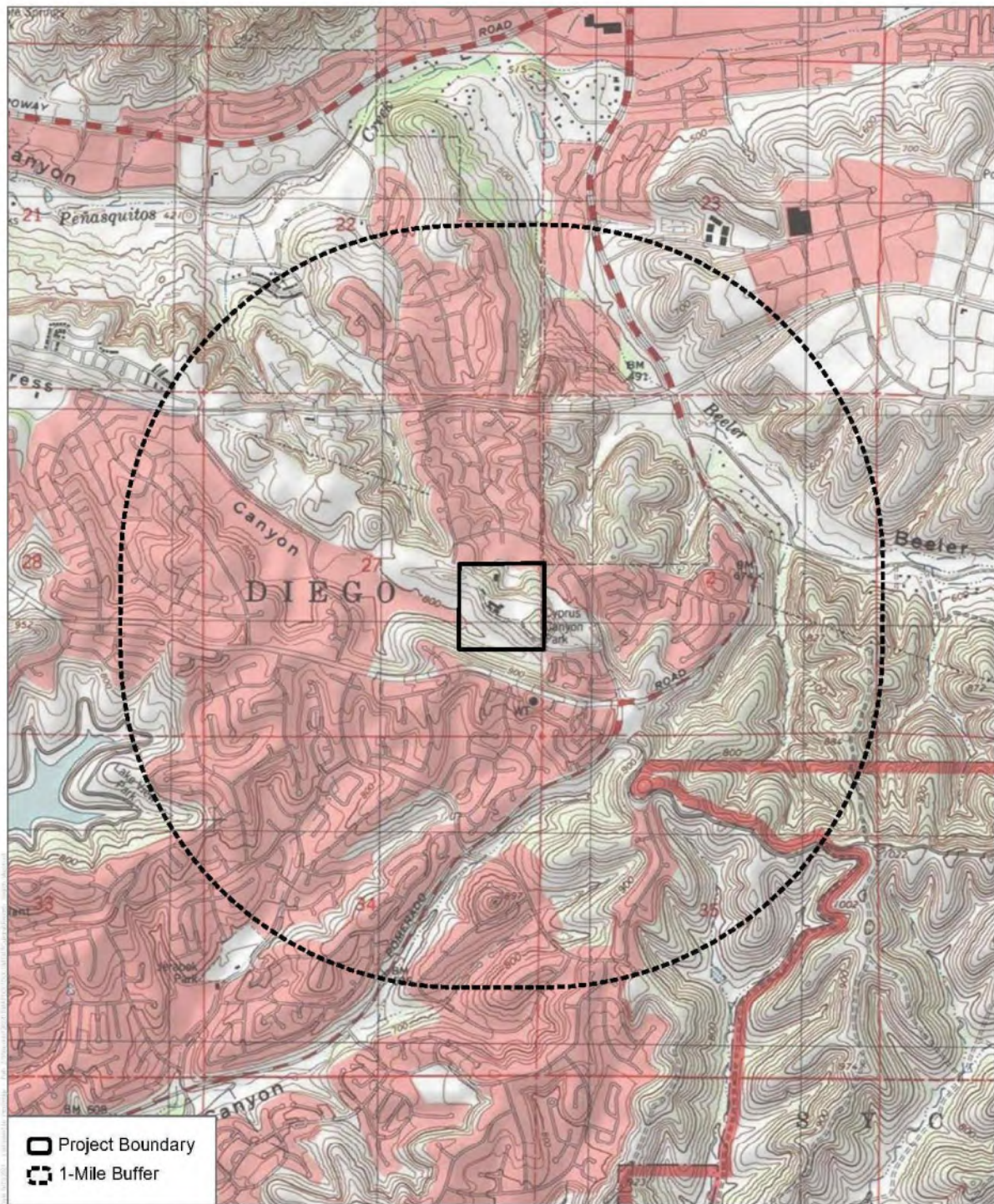
DUDEK

Phone: (760) 846-5874

Cell: (760) 805-4040

Email: mmurillo@dudek.com

Attachments: Figure 1. Regional project map.



SOURCE: USGS 7.5-Minute Series Poway Quadrangle

DUDEK

Records Search

Scripps Cypress Pointe Project, City of San Diego, California

November 9, 2021

Ms. Angela Elliott Santos, Chairperson
Manzanita Band of Kumeyaay Nation
P.O. Box 1302
Boulevard, CA 91905

Subject: Information Request for the Cypress Canyon/Renzuilli Estates Project, San Diego County, City of San Diego, California

Dear Ms. Santos,

The Project proponent is proposing the demolition of an existing residence (and all associated structures) onsite and the construction of 100 single-family homes and 100 multi-family affordable income rental units in the northeast section of the City of San Diego, California. The Project also includes associated roads, sidewalks, and landscaping. The site is located at 11495 Cypress Canyon Road (APN 319-020-04-00) in the northeast section of the City of San Diego, California and is south of Scripps Poway Parkway and north of Spring Canyon Road. This project falls in within Section 27 of Township 14 South, Range 2 West of the Poway California 7.5-minute U.S. Geological Survey Topographic Quadrangle Map (Figure 1).

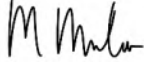
As part of the cultural resources study prepared for the proposed project, Dudek contacted the California Native American Heritage Commission (NAHC) to request a Sacred Lands File (SLF) search and a list of Native American individuals and/or tribal organizations who may have knowledge of cultural resources in or near the proposed project area. The NAHC emailed a response on November 9, 2021 which stated that the SLF search identified the presence of Native American cultural resources in the immediate project area.

The NAHC recommended that we contact you regarding your knowledge of the presence of cultural resources that may be impacted by this project. If you have any knowledge of cultural resources that may exist within or near the proposed project area, please contact me directly at (760) 846-5874 or at mmurillo@dudek.com within 30 days of receipt of this letter.

Please note that this letter does not constitute Assembly Bill (AB) 52 notification or initiation of consultation. AB 52 is a process between the lead agency and California Native American Tribes concerning potential impacts to tribal cultural resources. Tribes that wish to be notified of projects for the purposes of AB 52 must contact the lead agency, City of Oceanside, in writing (pursuant to Public Resources Code Section 21080.3.1 (b))

If you have any information or concerns pertaining to such information, please contact me by phone or email.

Respectfully,



Makayla Murillo, B.A.
Archaeologist
DUDEK
Phone: (760) 846-5874
Cell: (760) 805-4040
Email: mmurillo@dudek.com

Attachments: Figure 1. Regional project map.

