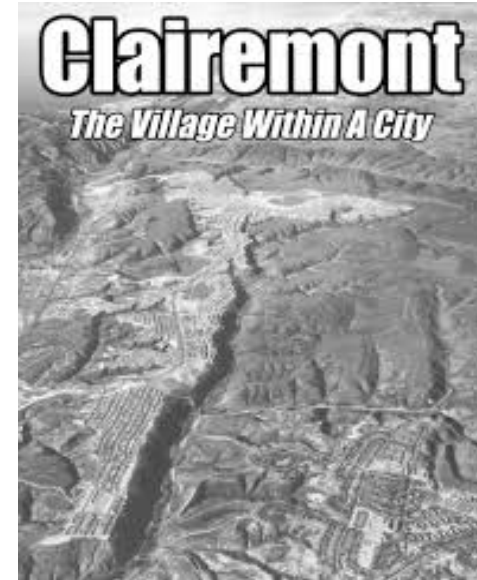
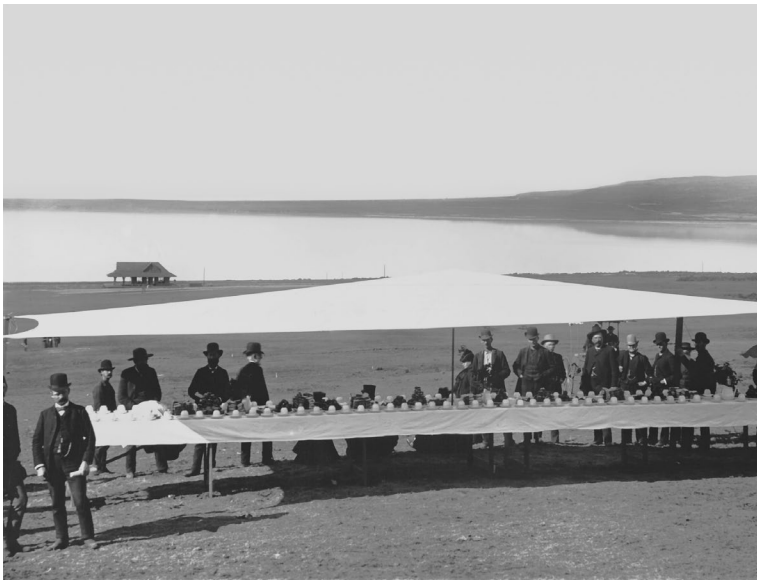


The Clairemont Community Plan Update (CCPU)

Clairemont has a rich history as one of the earliest suburban developments in California (1888). Ironically, early marketing flyers advertised it as “The Village within a City”. We appreciate the plan vision to focus higher density on transpiration corridors and village clusters.

With the significant increase in density proposed combined with the additional development capacity of State and local density waivers, Clairemont is poised to deliver much needed housing in our region.



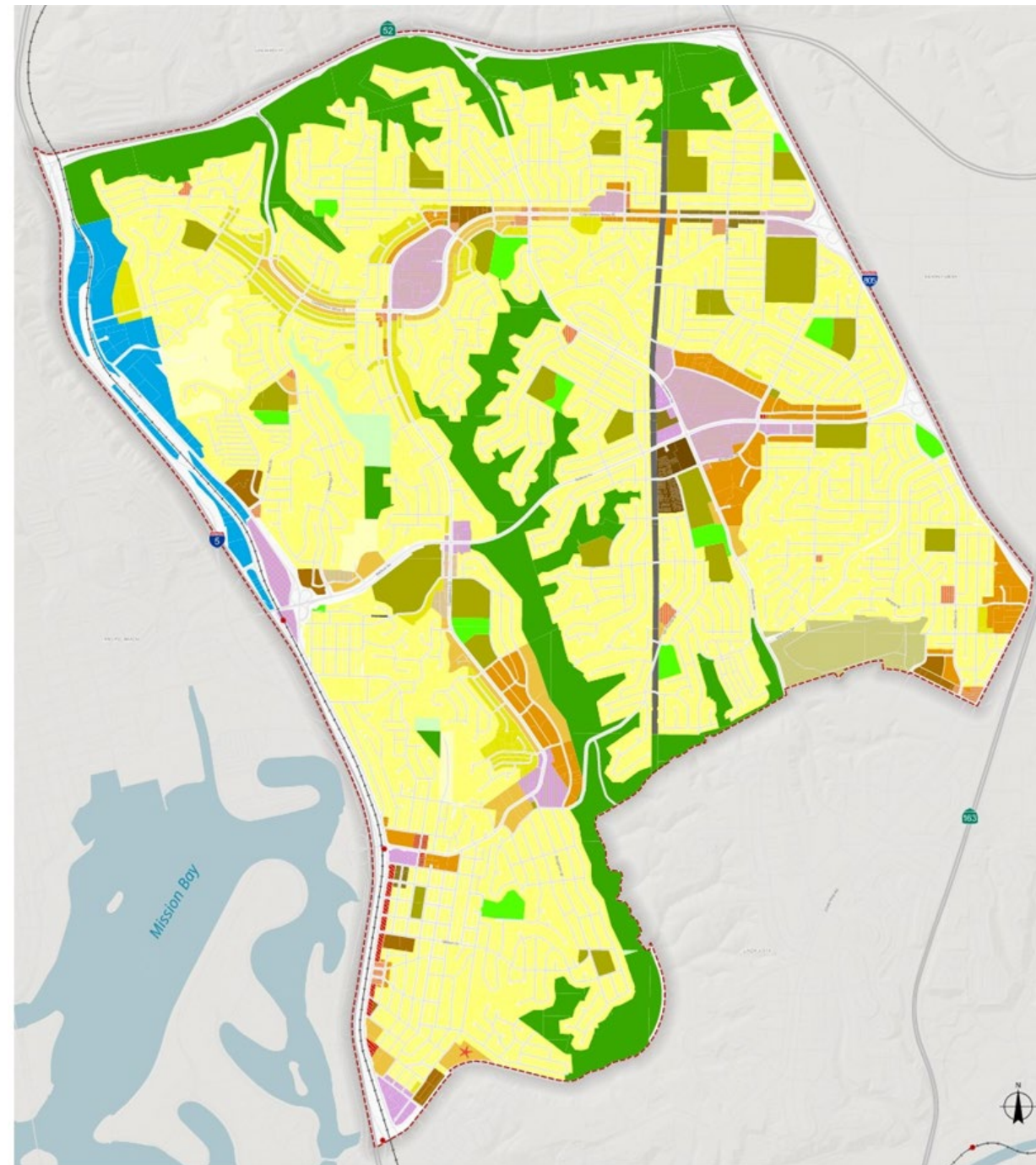
The Clairemont Community Plan Update (CCPU)

The CCPU includes a number of policies aimed at protecting open space canyons in the community which is appreciated.

Guiding Principle #1 (CCPU Page 15)
“Protection of canyons and creeks as community assets”






NEIGHBORHOODS (CCPU Page 34)
“The single-family residential areas are outlined by Clairemont’s open space canyons. Higher levels of density away from open space canyons provide for the important preservation of natural resources.”

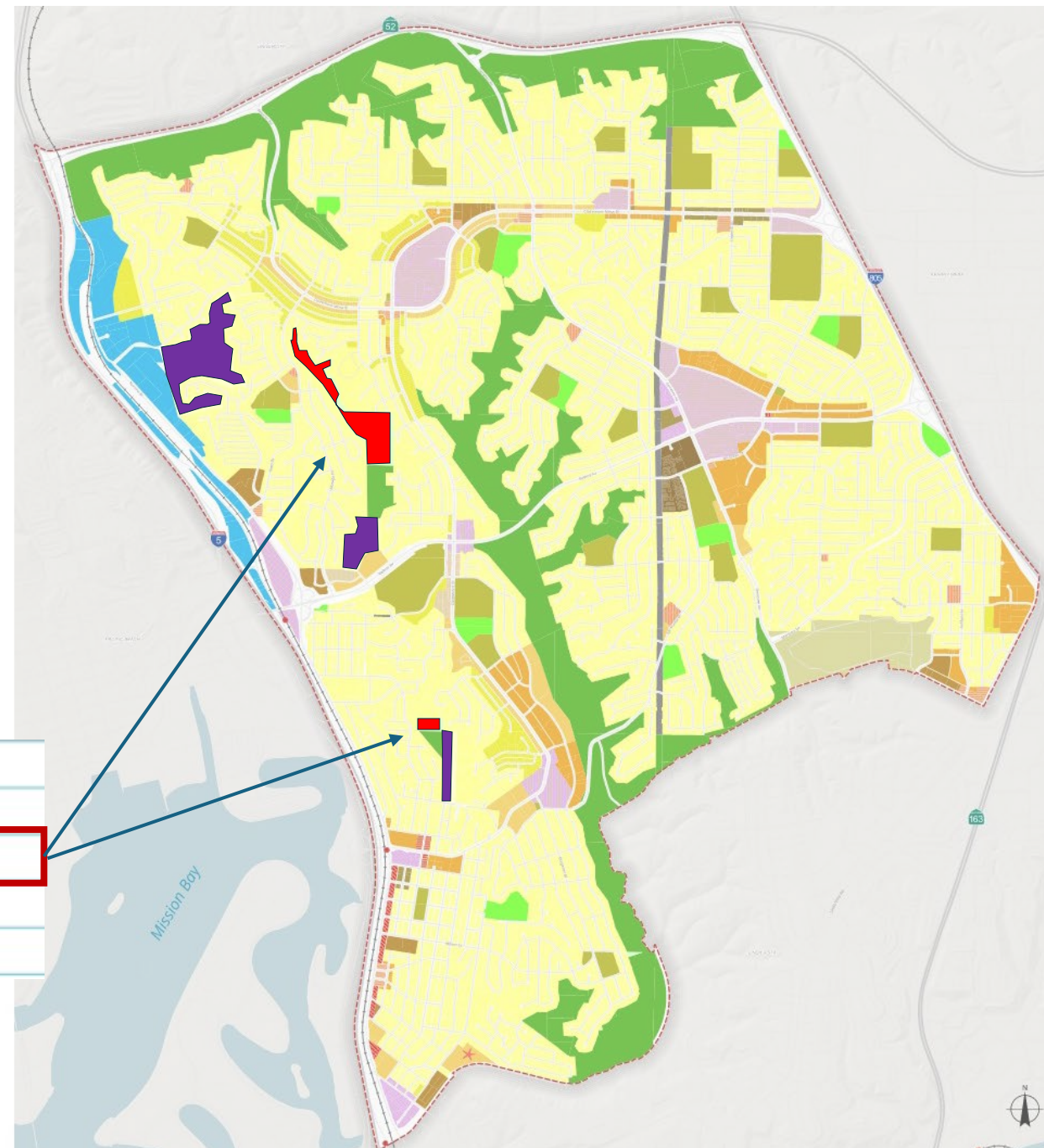
Guiding Principle #7 (CCPU Page 15)
“A community focus on sustainability and urban greening”



Protecting Canyonlands

One question we have is that canyonland protection is a stated goal in the CCPU, but only a small portion of the private canyons are recognized as “Open Space”, see the two areas highlighted in red at right.

Park, Open Space, and Recreation			Parks
			Resource-Based Parks
Residential	1 DU/AC		Open Space
	0-3 DU/AC		Residential Very Low 3
	5-9 DU/AC		Residential Low 2



Clairemont, a community of Mesas and Canyons

Clairemont includes hundreds of acres of private canyons that provide significant quality of life and environmental benefits. Most of these private canyons are not recognized as the open space they are, see canyons highlighted in yellow at right.

In a similar way to the Open Space designation, are there mechanisms within the plan to add additional protection to the important private open space canyonlands in Clairemont?

