

# 10350 Barnes Canyon Road

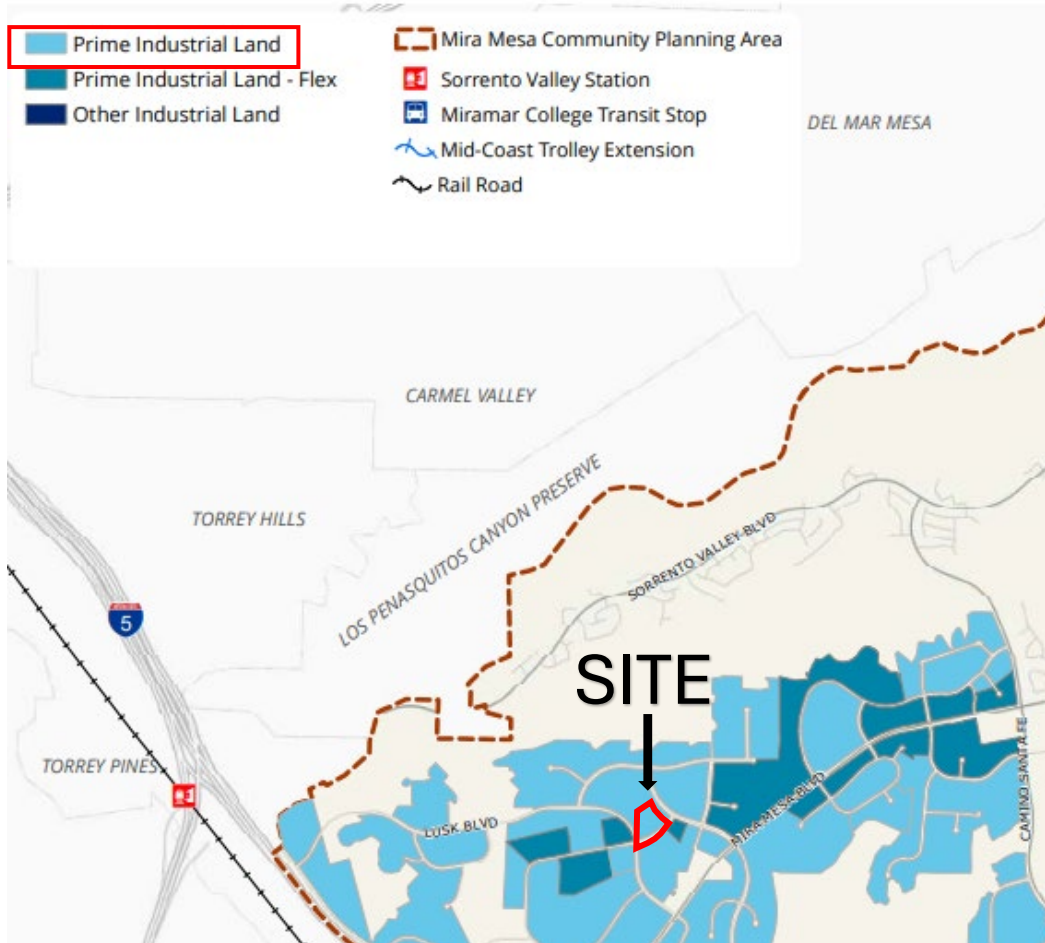
## Community Plan Amendment Initiation and Rezone





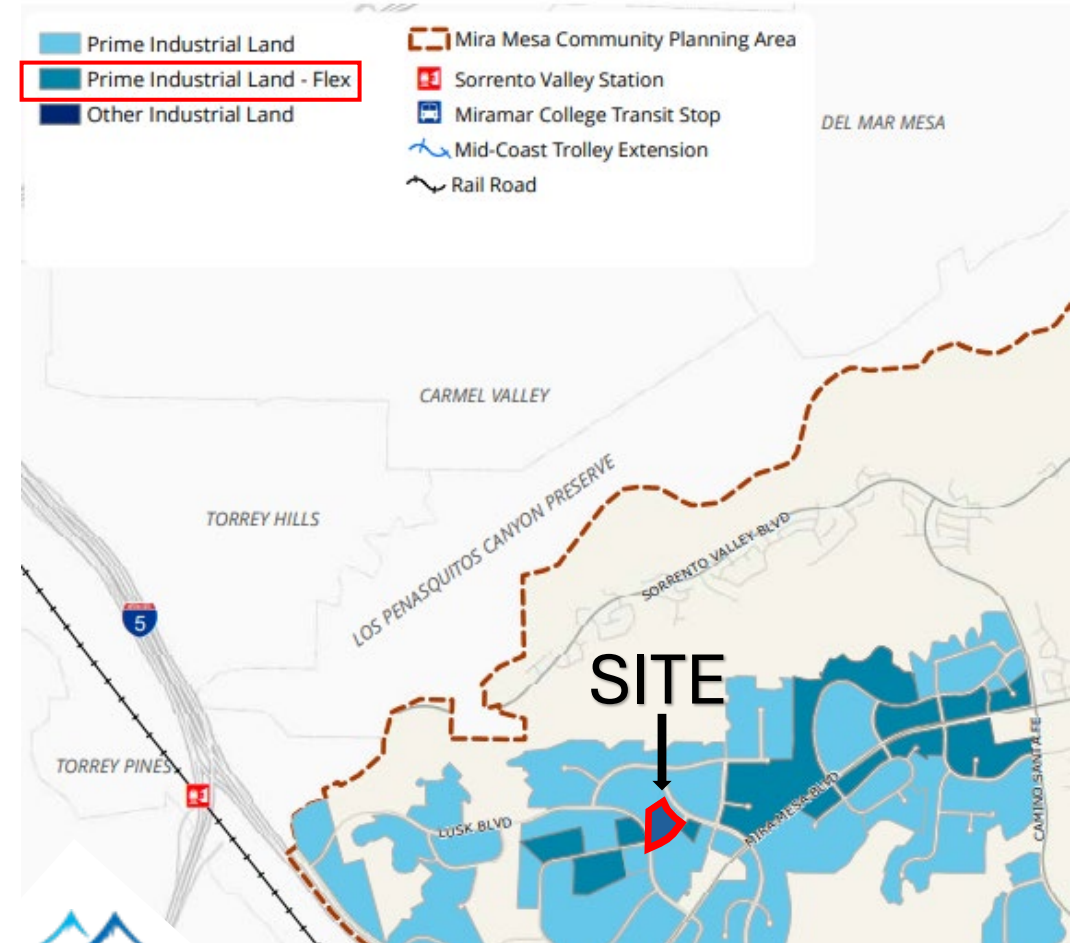
# Existing: Prime Industrial Land

Figure 2-1. Prime Industrial Lands



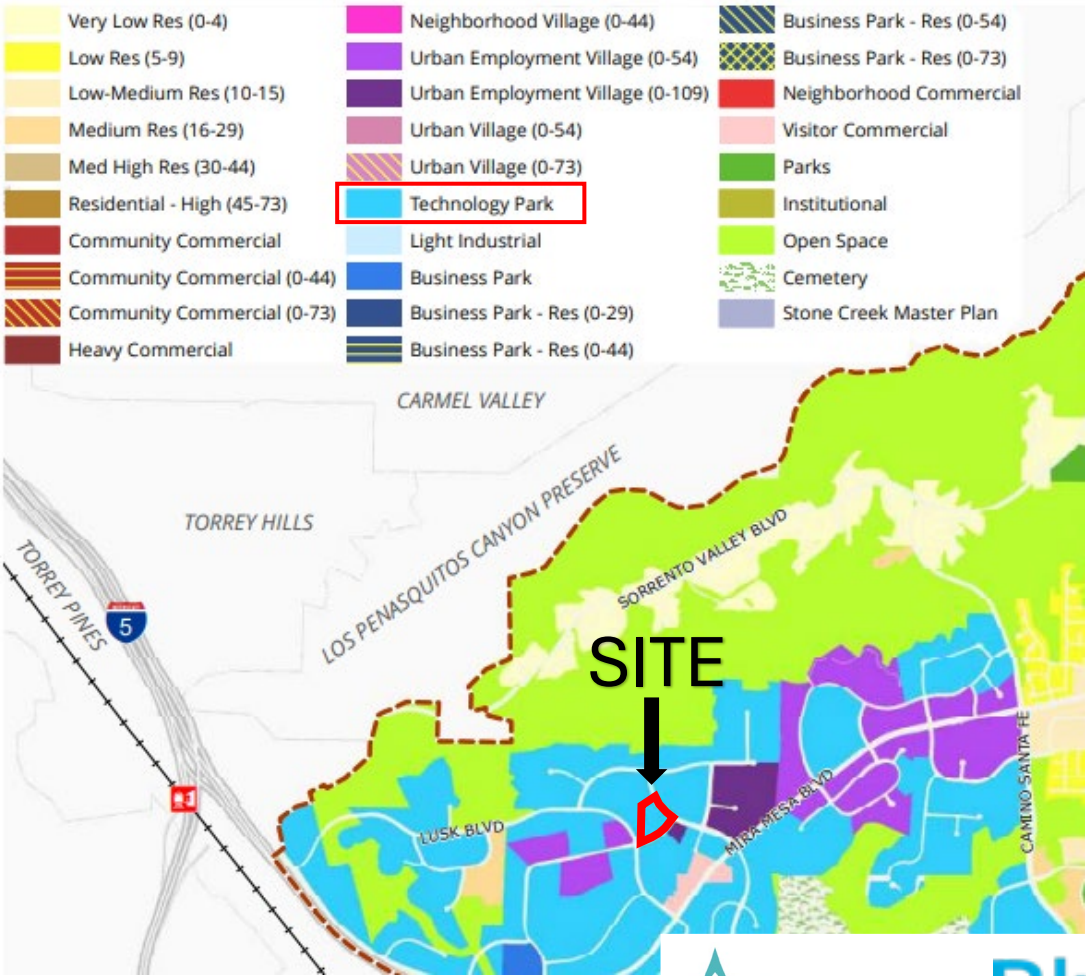
# Proposed: Prime Industrial Land - Flex

Figure 2-1. Prime Industrial Lands



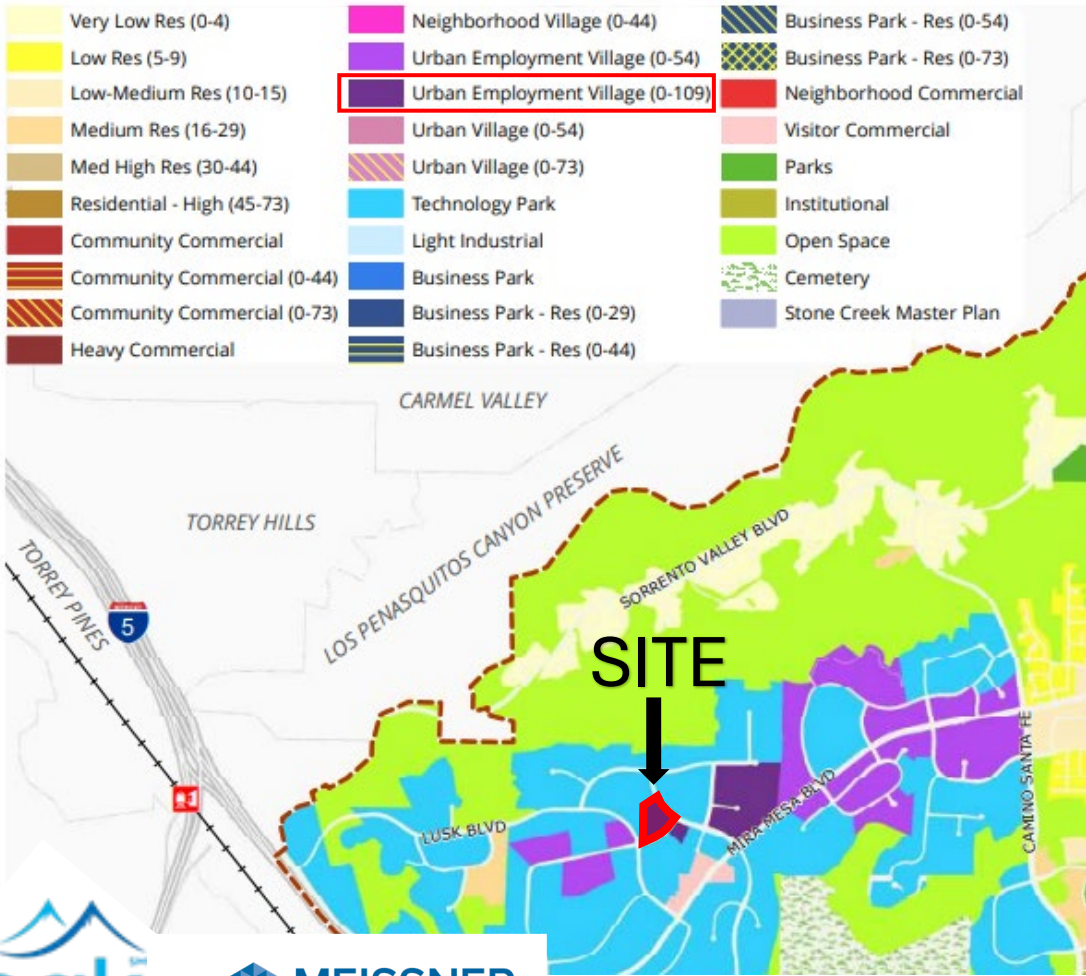
# Existing: Technology Park

Figure 2-2. Planned Land Uses



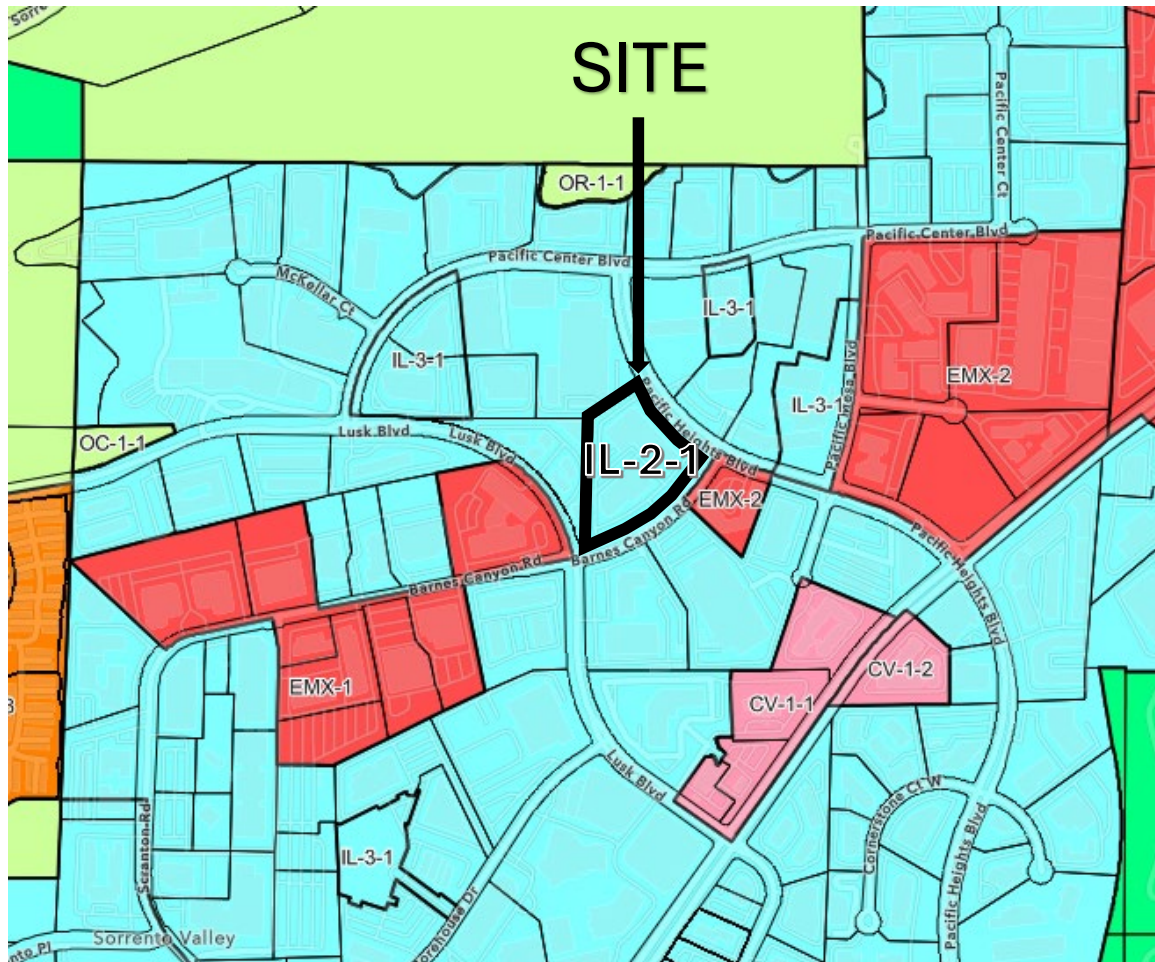
# Proposed: *Urban Employment Village (0-109)*

Figure 2-2. Planned Land Uses

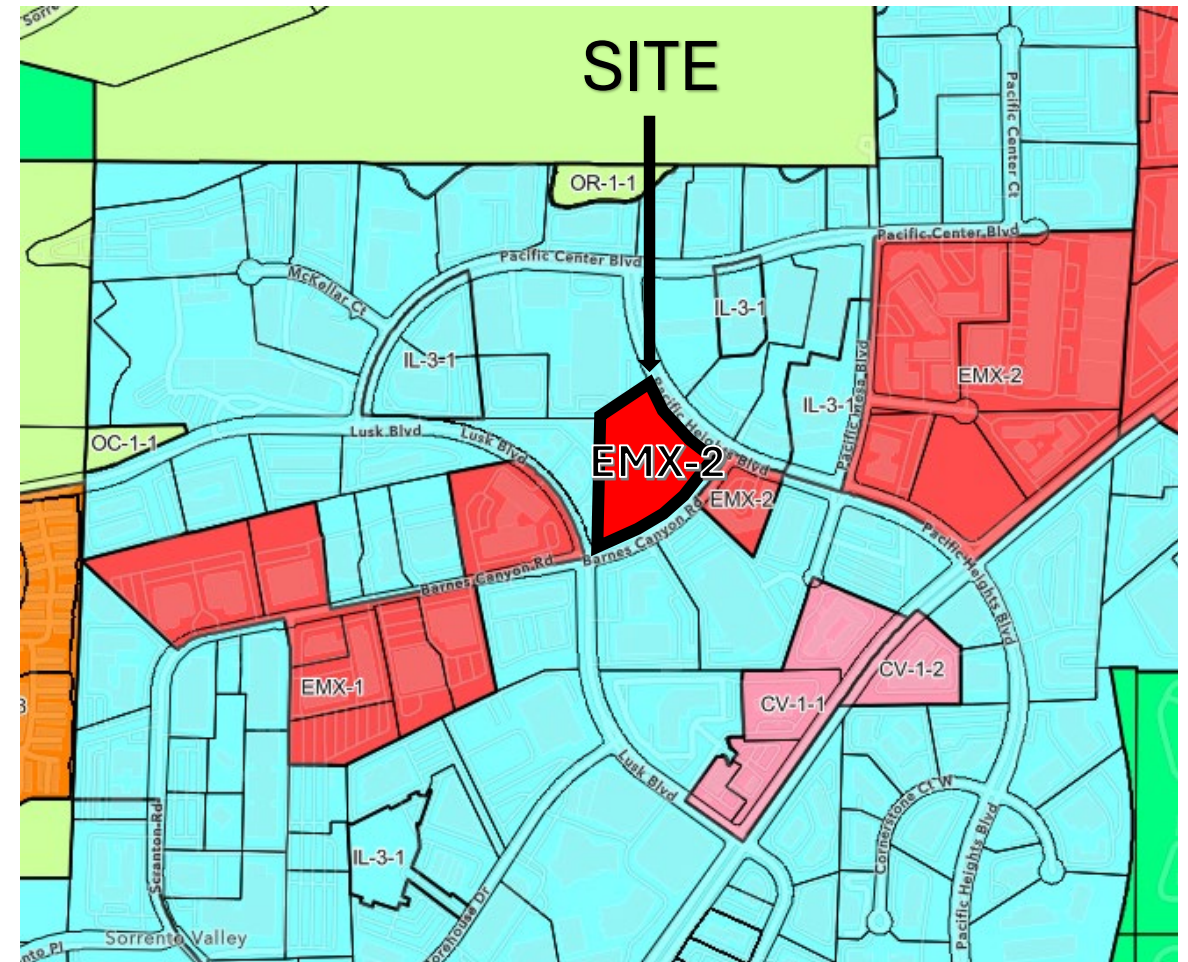




## Existing Zoning: Industrial Light 2-1 (IL-2-1)



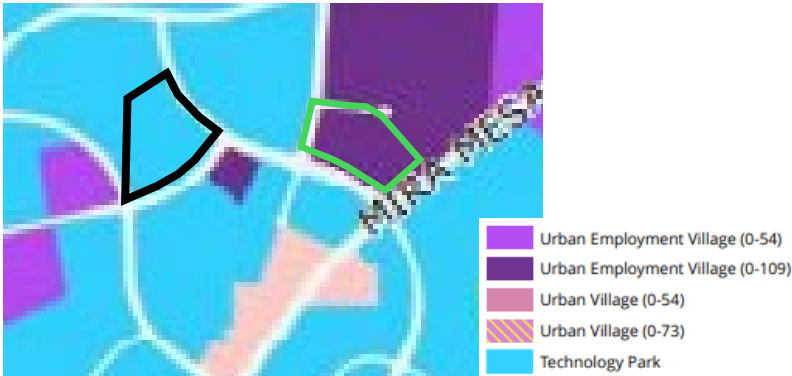
## Proposed Zoning: *Employment Mixed-Use 2 (EMX-2)*







Existing Land Use Technology Park  
*Proposed Urban Employment Village*  
 (0-109 du/ac)



Existing Zoning IL-2-1  
*Proposed EMX-2*

