



# Biodiverse SD

Resiliency Advisory Board  
Sept. 18, 2025





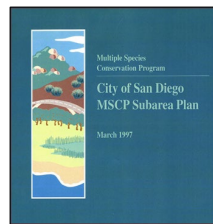
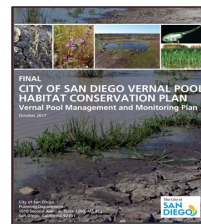
# BIODIVERSE SD

*"To preserve a network of habitat and open space, protecting ecosystems that improve our quality of life."*



Learn more at  
<https://www.sandiego.gov/planning/work/biodiversity>

or by scanning the QR code



## City of San Diego Multiple Species Conservation Program Subarea Plan

- Subarea encompasses 206,000 acres
- Covers 85 species
- Protects core biological resource areas identified within the City's Multi-Habitat Planning Areas.

### Multi- Habitat Planning Area (MHPA)

- Represents a "Hard line" preserve that delineates core biological resource areas and habitat linkages.
- Goal to conserve 52,727 acres by 2047
- Check out our MHPA interactive map on the webpage!

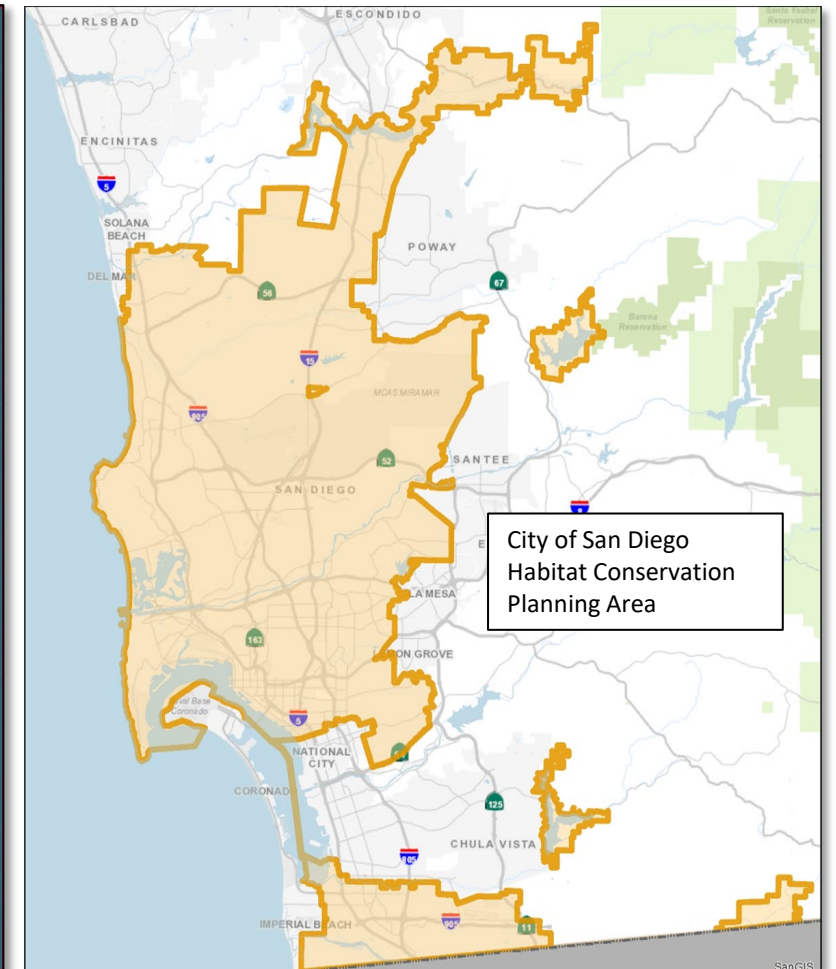
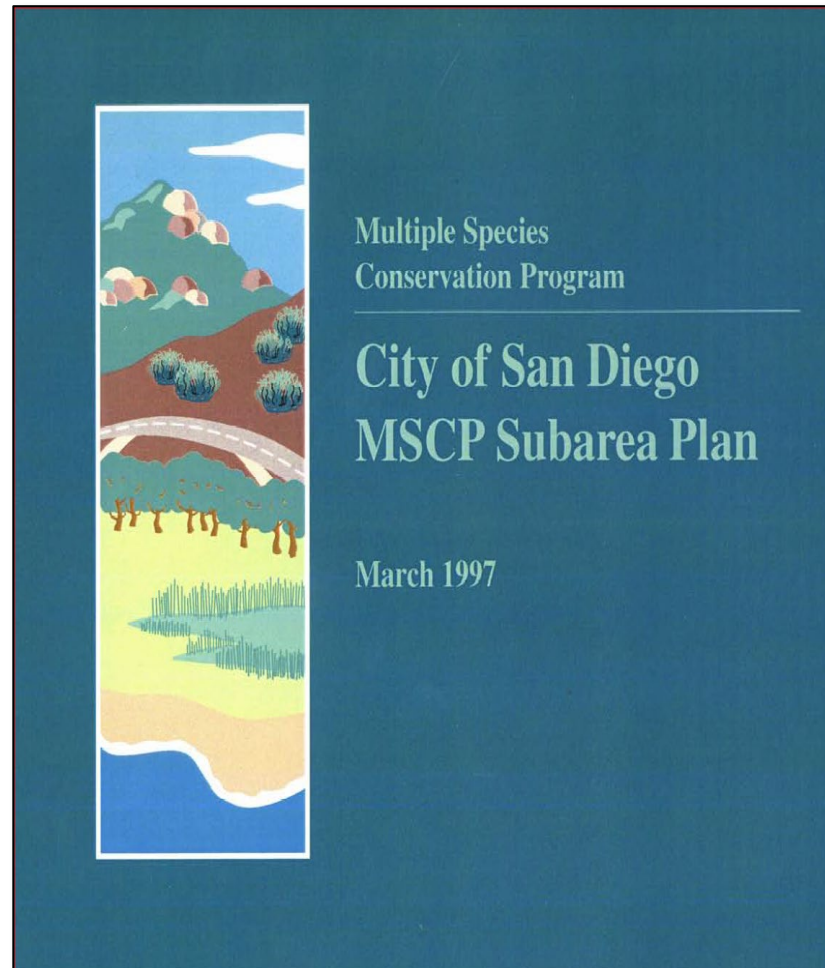
### Vernal Pool Habitat Conservation Program

- Framework to protect, enhance, and restore vernal pool resources
- Covers seven vernal pool species
- Check out our Vernal Pool interactive map on the webpage!



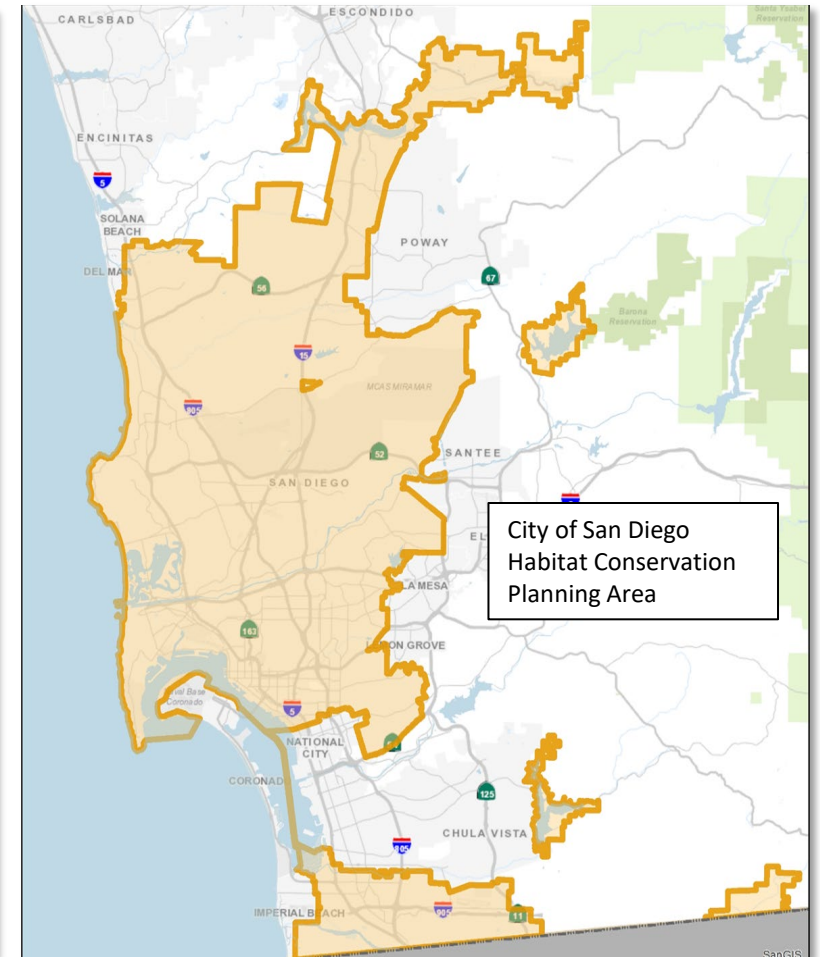
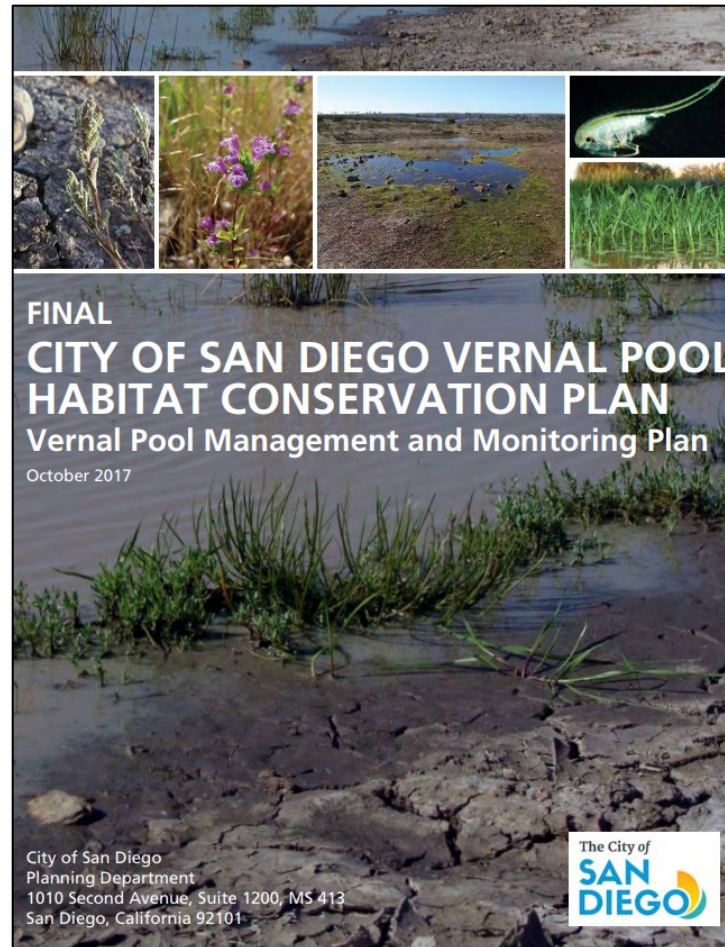
# City of San Diego MSCP Subarea Plan

- **1997-2047**
  - MSCP 50-year permit
- **Covers 85 Species**
  - 46 Plants
  - 39 Animals



# Vernal Pool Habitat Conservation Plan (VPHCP)

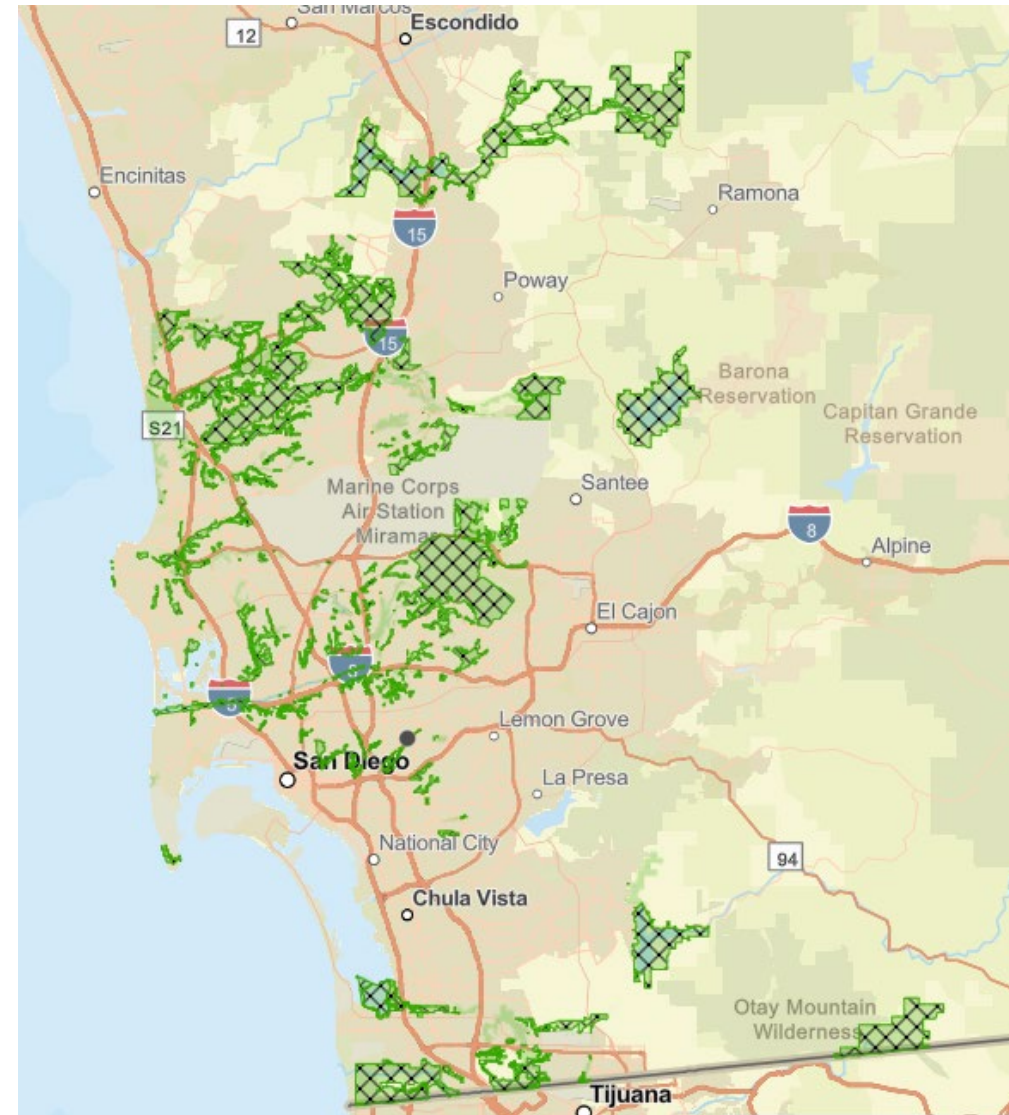
- **2018-2047**
  - VPHCP - 29 years
- **Covers 7 Species**
  - 5 Plants
  - 2 Animals



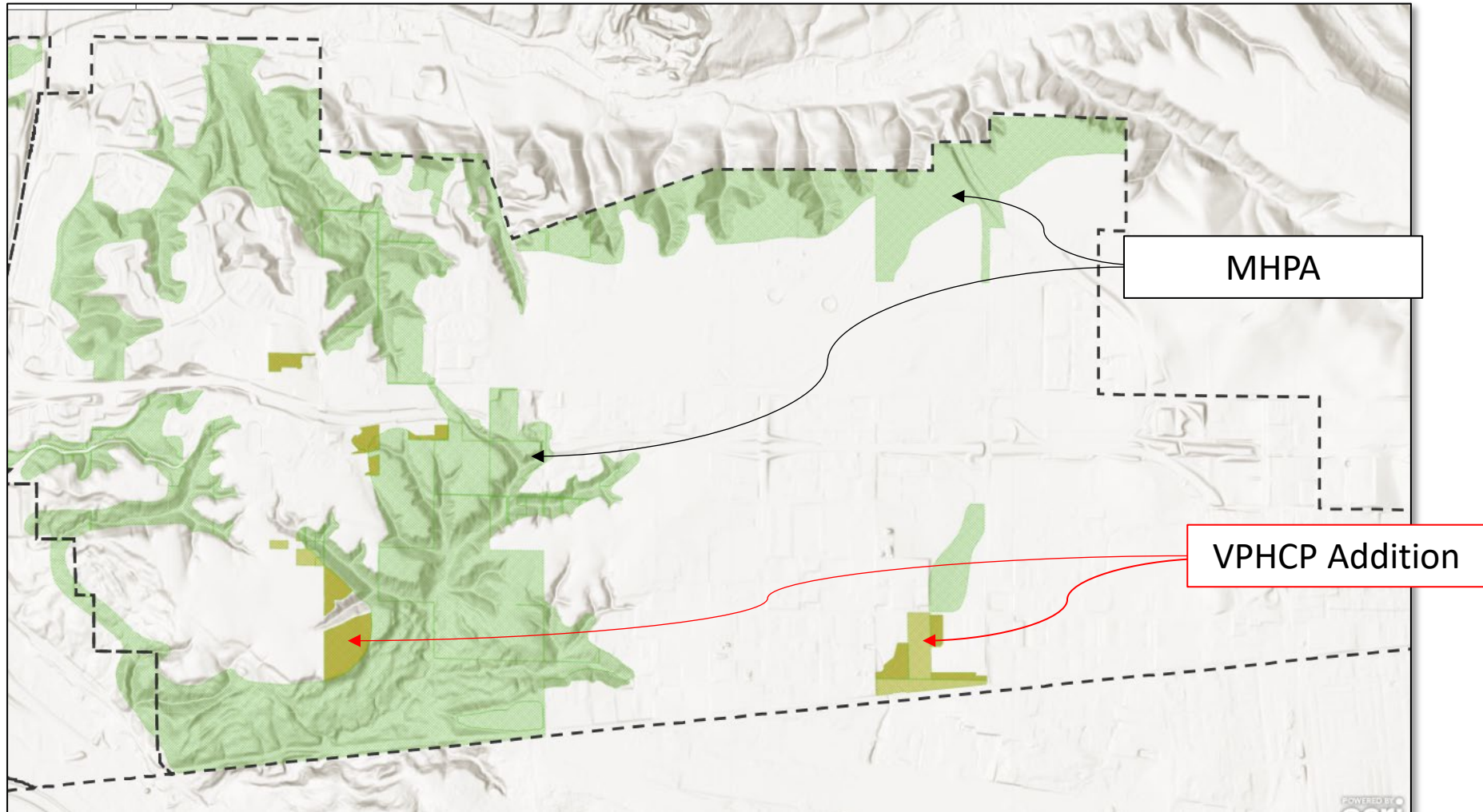


# Multi-Habitat Planning Area (MHPA)

- “Hard line” preserve
- Focuses on conservation of core biological resource areas and wildlife corridors
- Allows limited development of uses compatible with the conservation goals of the MSCP



# MHPA and VPHCP Conservation Areas





# Municipal Code

- Environmentally Sensitive Lands Regulation §143.01
- Land Development Code: Biology Guidelines
- Brush Management Regulations
- Landscape Standards





# What we do

- Project and Program Reviews
- Manage preserve assembly
- Wildlife Agency Coordination
- Regional Coordination
- Community Partnerships

**SANDAG**



# Annual Reports: MSCP and VPHCP

## MSCP

- Habitat gain and loss
- Habitat management activities
- Boundary line adjustments and corrections

## VPHCP

- Habitat management activities
- Analysis of collected data
- Private management of vernal pools
- Species monitoring



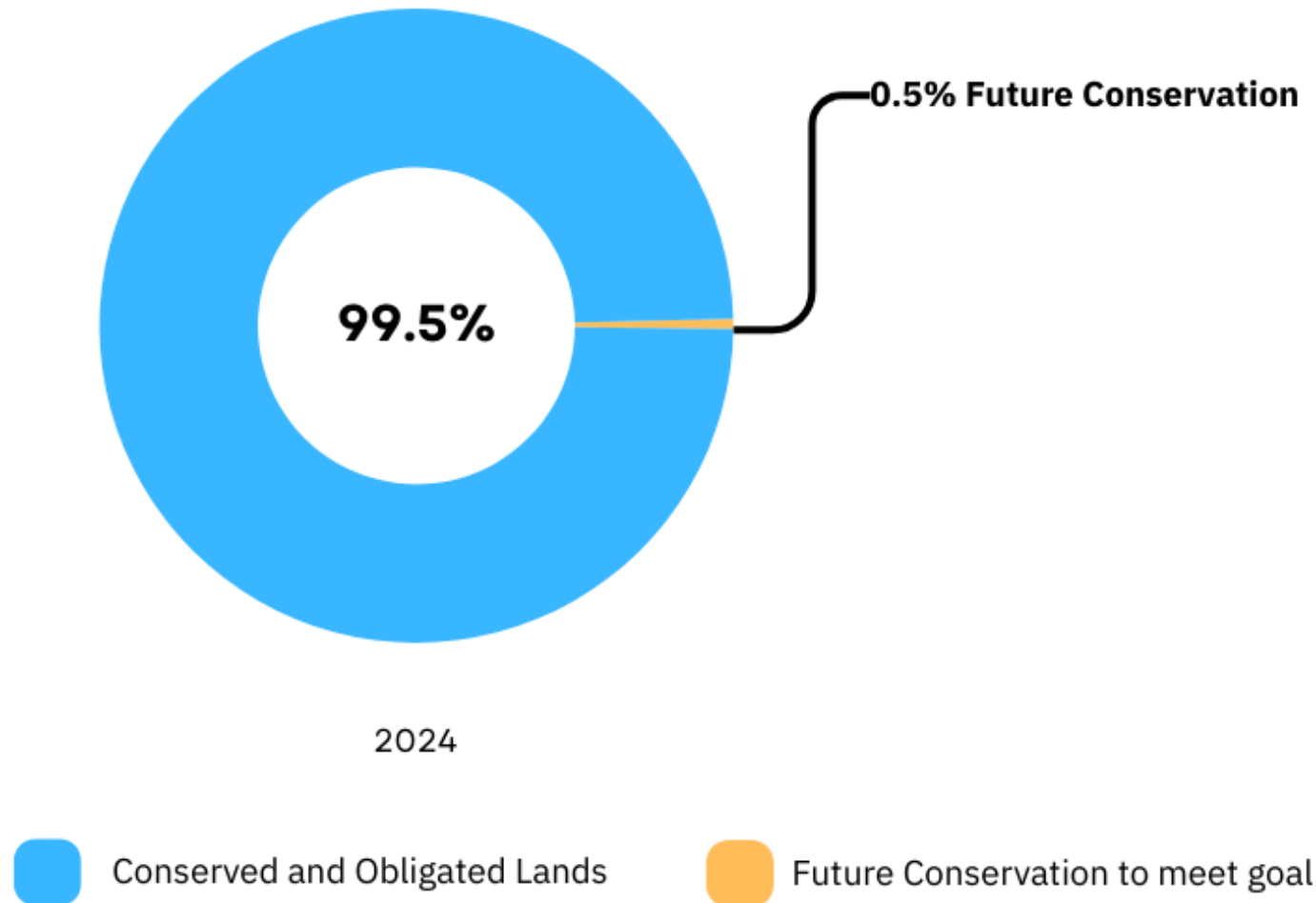
*MSCP 25<sup>th</sup> Anniversary Workshop*



# Habitat Acquisition

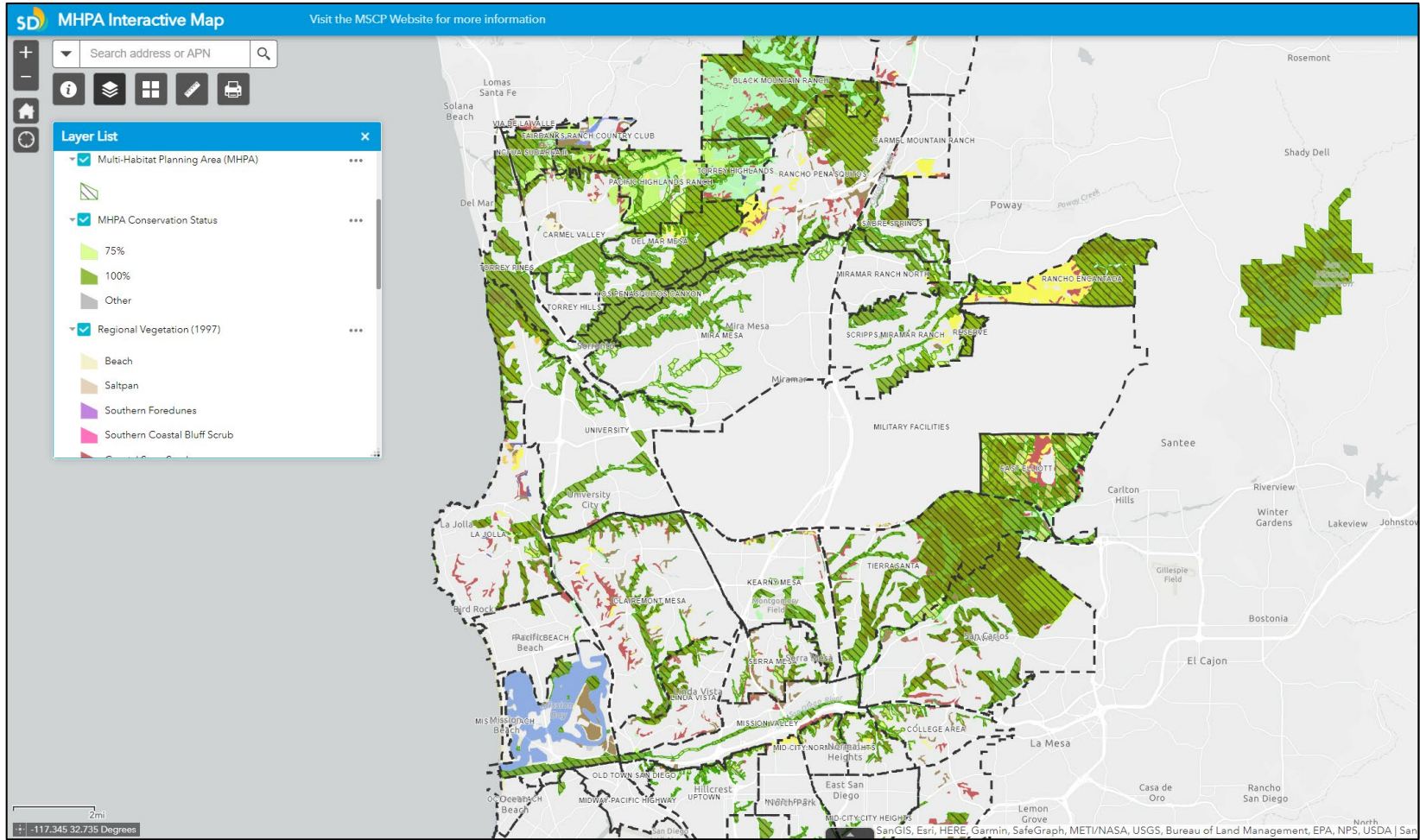


# 2024 MSCP Conservation Status



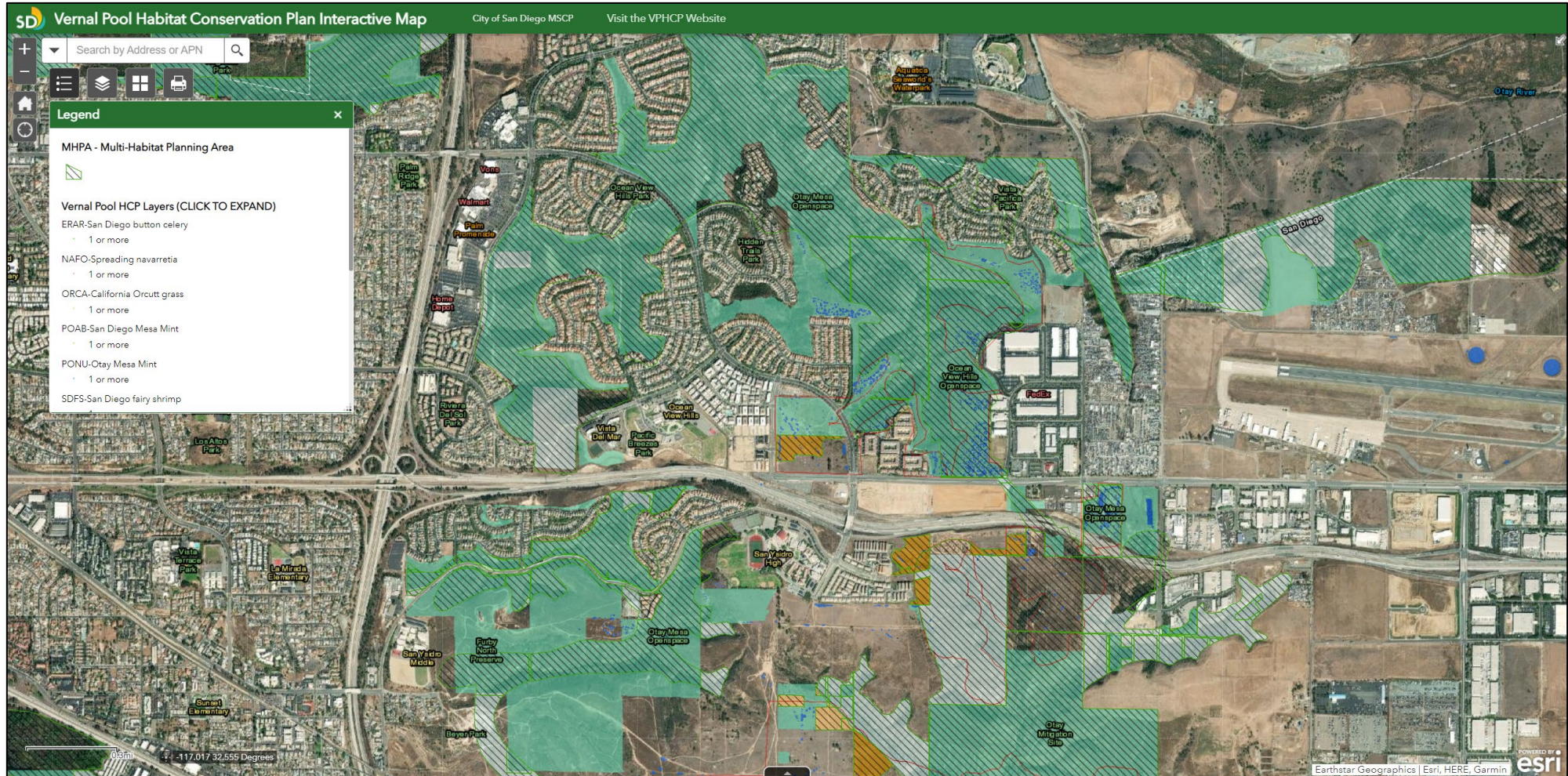


# MHPA Interactive Map





# VPHCP Interactive Map





# 2023 MSCP Management Highlights

City of San Diego Parks and Recreation Department

Open Space Division  
March 12, 2024

[Introduction](#)

[Balboa Park Ranger District](#)

[Black Mountain Ranger District](#)

[Chollas Lake Ranger District](#)

[Citywide Open Space and Canyon...](#)

[Los Peñasquitos Ranger Distric...](#)

[Mission Bay and Shoreline Park...](#)

[Mis:](#)

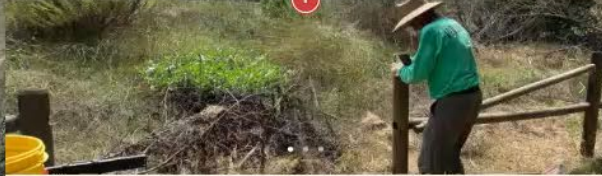
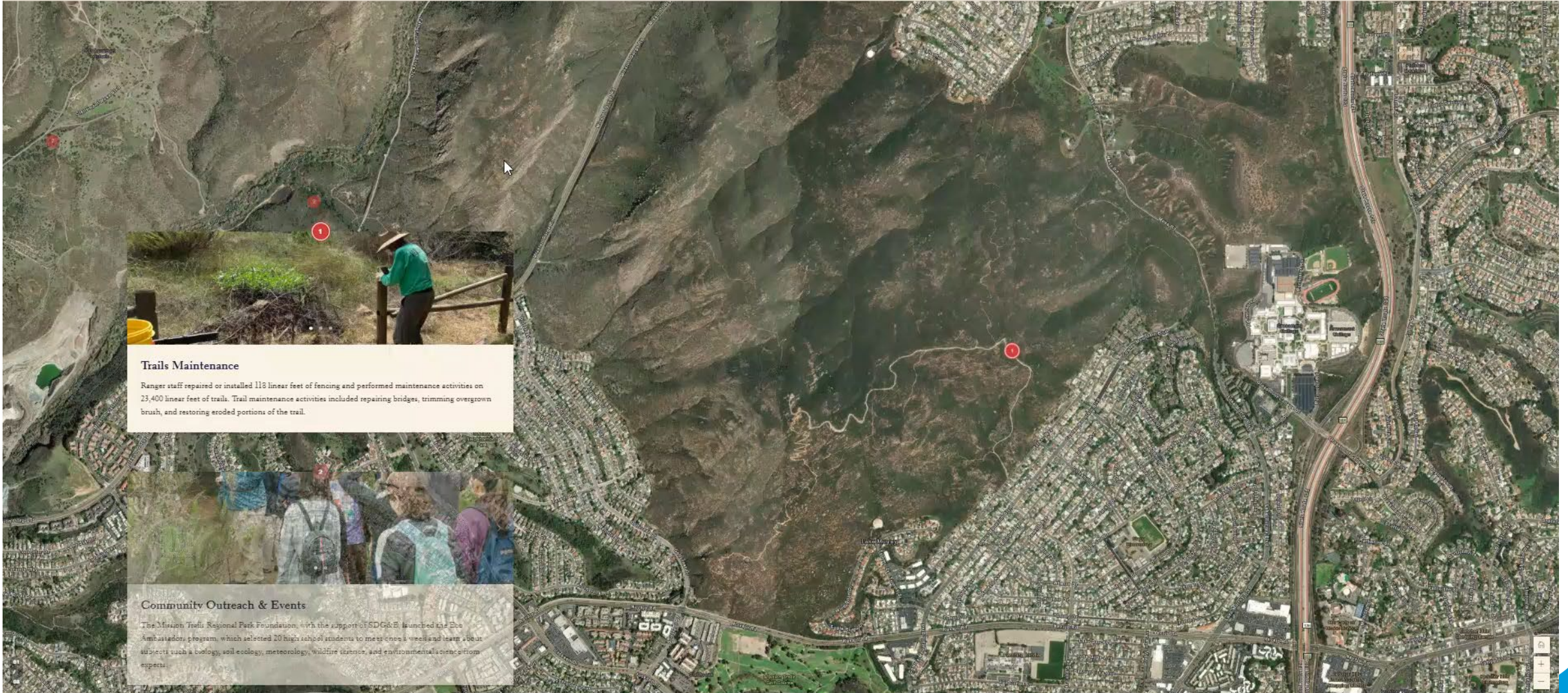


## Introduction

The MULTIPLE SPECIES CONSERVATION PROGRAM (MSCP) can only be successful through informed management of conserved lands. Management in support of the City of San Diego's (City) MSCP Subarea Plan is performed by the City's Parks and Recreation, Public Utilities, and Environmental Services Departments. The City often partners with other public agencies, schools, environmental consultants, and non-profit groups to complete management tasks.







**Trails Maintenance**

Ranger staff repaired or installed 118 linear feet of fencing and performed maintenance activities on 23,400 linear feet of trails. Trail maintenance activities included repairing bridges, trimming overgrown brush, and restoring eroded portions of the trail.



**Community Outreach & Events**

The Mission Trails Regional Park Foundation, with the support of SDCRE, launched the Bee Ambassador program, which selected 20 high school students to meet once a week and learn about subjects such as biology, soil ecology, meteorology, wildfire science, and environmental science from experts.



## COLLECTION

# Multiple Species Conservation Program

The Multiple Species Conservation Program (MSCP) is a comprehensive habitat conservation planning program which addresses multiple species habitat needs and the preservation of natural communities in southwestern San Diego County.

[Get started](#)

1 MSCP Covered Flora



2 MSCP Covered Wildlife

## Guide to Brush Management: Property Owners

### Importance of Brush Management

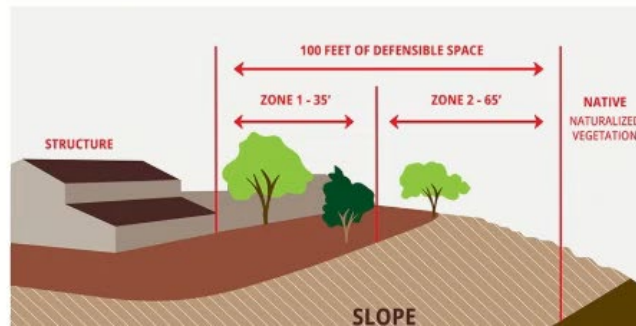
The city of San Diego has over 500 linear miles of wildland-urban interface, which is where homes meet dense vegetation in canyons and other open space areas. Years of drought, worsened by climate change, have increased the flammability of vegetation and the risk for dangerous wildfires to occur. These high-fire zones (see [SD Fire map](#)) are areas that are potentially at risk for wildfires. Maintaining defensible space around homes and other buildings through proper brush management helps to reduce potential wildfire impacts as there is less fuel for the wildfire to grow and more room for firefighters. Defensible space is the buffer zone between a building and the surrounding area. Brush management includes pruning and thinning of native and naturalized vegetation as well as revegetation with low-fuel plants.



### Brush Management Zones

Brush management should be conducted in the 100 feet extending out from a structure. The 100 feet are designated in two zones. Zone 1 extends from the structure to 35 feet out, and Zone 2 extends 65 feet out from the end of Zone 1.

Zone 2 often consists of undisturbed vegetation subject to protections for environmentally sensitive lands, such as those within the [City's protected conservation area](#), known as the [Multiple Habitat Planning Area](#). Individual private properties within or adjacent to the Multiple Habitat Planning Area and [open space areas](#) are subject to regulations to protect sensitive plants and animals.



### Initiatives & Ongoing Work

- [Initiatives & Ongoing Work Home](#)
- How We're Planning for...
  - [Homes & Jobs](#)
  - [Equity](#)
  - [Environment](#)
  - [Public Spaces](#)
- [What We're Working On](#)

[View the MHPA boundary](#)

[View MSCP Covered Species](#) PDF

[Find out what kind of biological resources are on my property](#)

[View Land Development Code](#)

[View land use adjacency guidelines](#)

[View MSCP Rare Plant Monitoring Plan Revision](#)



Translation and  
Interpretation Services

Servicios de Traducción e  
Interpretación

Mga Serbisyonang Pagsasalin  
at Pagpakahulugan

翻译和口译服务

Các Dịch vụ Biên dịch và  
Phiên dịch

번역 및 통역 서비스

Sign up to stay  
informed!

Subscribe Now





# Thank You!

- Biodiverse SD Webpage: <https://www.sandiego.gov/planning/work/biodiversity>
- 2024 MSCP Annual Report: [https://www.sandiego.gov/sites/default/files/2025-09/mscp-2024-annual-report\\_final\\_draft\\_0.pdf](https://www.sandiego.gov/sites/default/files/2025-09/mscp-2024-annual-report_final_draft_0.pdf)
- 2023 MSCP Management Report: <https://webmaps.sandiego.gov/portal/apps/storymaps/stories/0767e962da0644e0b701cfc629feb894>
- MSCP Covered Species - Flora & Fauna: <https://webmaps.sandiego.gov/portal/apps/storymaps/collections/7fd42ba9d0064413993afff1f42b79e1>
- MHPA Interactive Mapping Tool: <https://webmaps.sandiego.gov/portal/apps/webappviewer/index.html?id=d77da895df084249b1ae7a2c10794470>
- VPHCP Interactive Mapping Tool: <https://webmaps.sandiego.gov/portal/apps/webappviewer/index.html?id=d04d9b6e46fc43cf998f46d9018c04e3>
- Brush Management: <https://www.sandiego.gov/planning/work/brush-management>