

Parks and Recreation Department

# Martin Luther King Jr. Community Park Mountain View Tennis Center General Development Plan Amendment

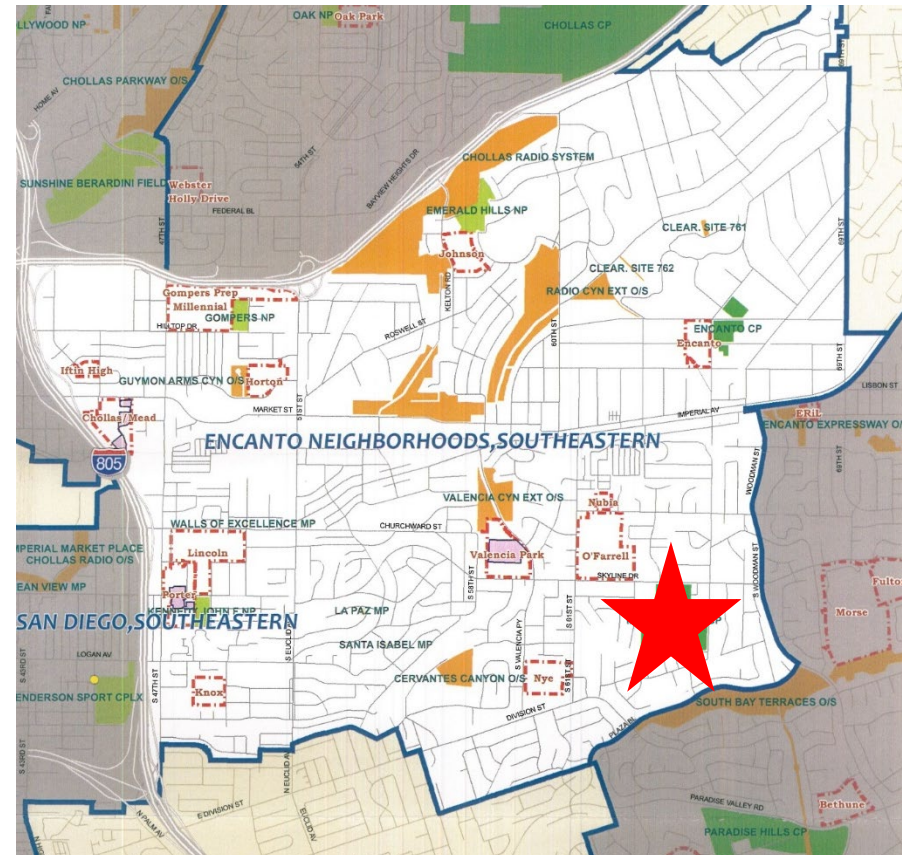
Parks and Recreation Board  
February 19, 2026

Action Item 101

# Background

## Martin Luther King Jr. Community Park and Mountain View Sports and Racquet Association

- Located at 6401 Skyline Drive within the Encanto community, within Council District 4.
- The Mountain View Sports and Racquet Association has hosted tennis programming at Martin Luther King Jr. Community Park since 1975.
- The new Mountain View Tennis Center will help MVSRA expand their sports program making tennis accessible for all.



# Mountain View Sports and Racquet Association



- Tennis & education organization of diverse backgrounds
- Serve 100's of kids annually through tennis STEM program
- 100% HS graduation rate
- Awarded \$300k in Scholarships
- Make an impact on the Southeast communities through tennis and education
- Create official partnerships to better serve our community
- Expand Junior Tennis & Education Programs
- Provide a safe place to play and learn



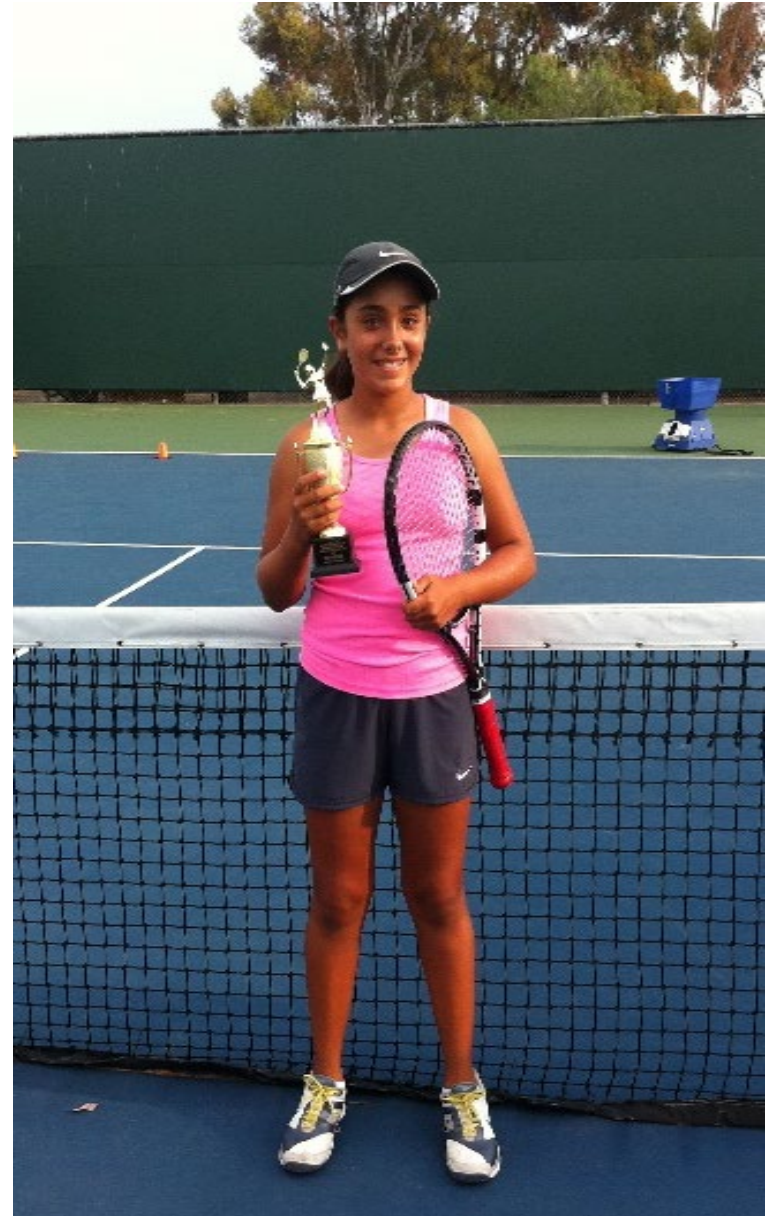
# Project Scope

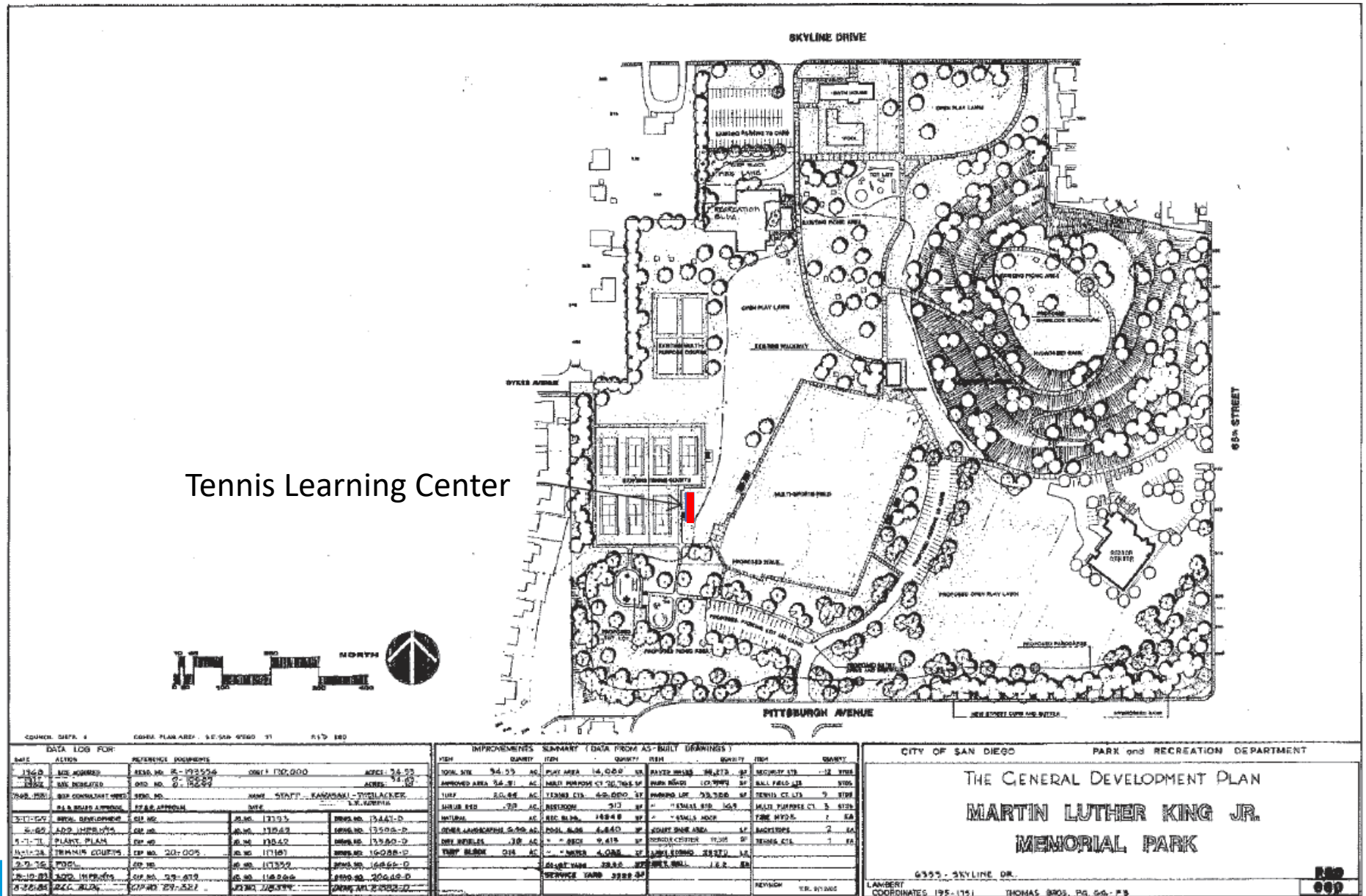
Design and construction of a Tennis Learning Center including:

- a 2,232 SF modular building with pro shop, lounge, offices, classrooms, kitchen facilities, restrooms and storage
- Elevated viewing deck, ramp and stairs
- 15' tall security fence and gates
- New concrete walkways and associated infrastructure

## Funding for Design and Construction:

- Councilmember Henry L. Foster III District 4
- Anonymous donor
- Specified Grant administered by the Office of Grants and Local Services (OGALS)



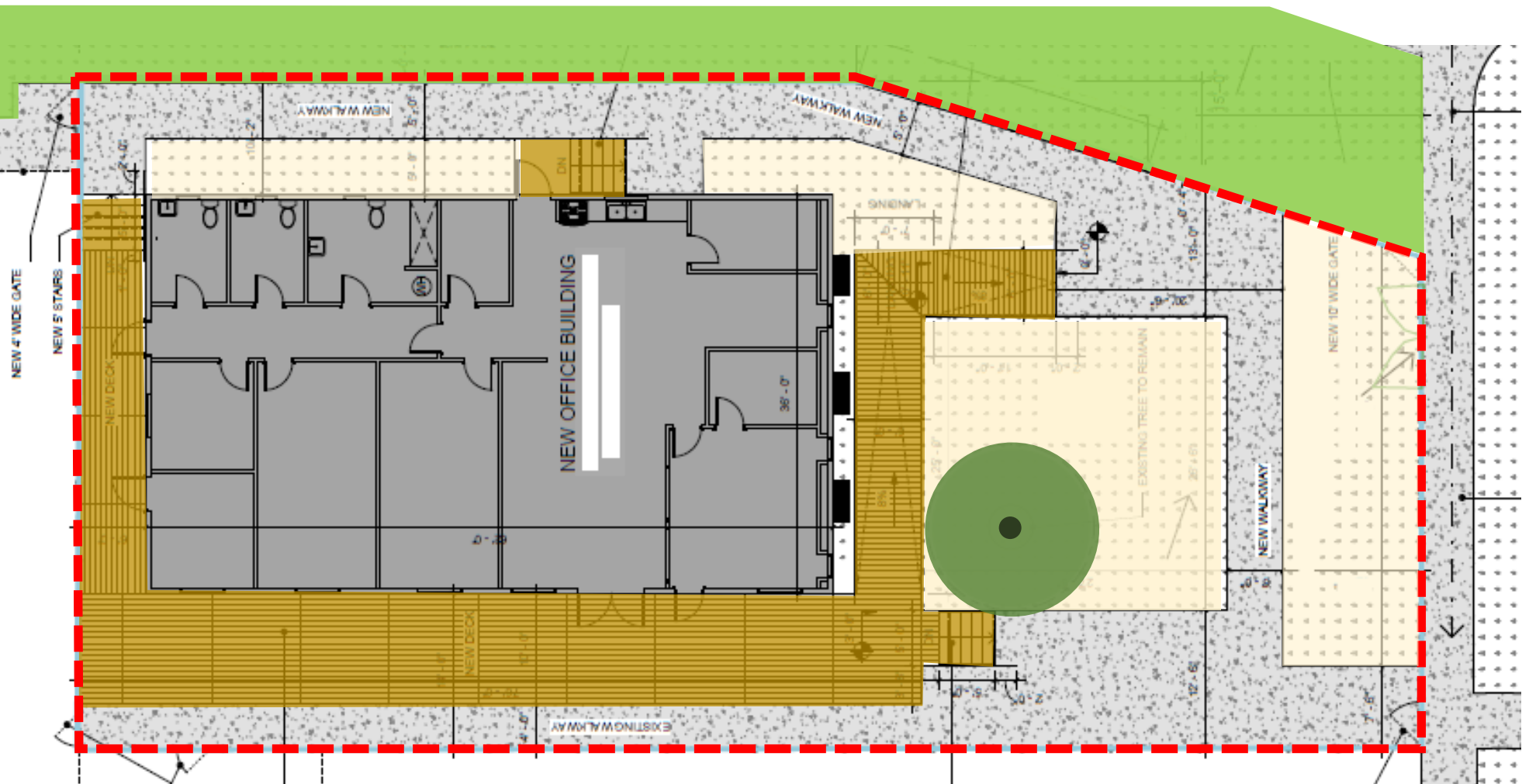




# MLK Jr. Community Park



# Tennis Learning Center



Tennis Courts

# Recommendation

Recommend approval of the proposed Martin Luther King Jr.  
Community Plan General Development Plan (GDP)  
Amendment for the Mountain View Tennis Learning Center

