

Parks and Recreation Department

Joint Use Program with School Districts: 2025 Annual Update

Parks and Recreation Board
February 19, 2026

Information Item 202



What is Joint Use?

City and School District Partnerships

- Joint use provides for the shared use of the public facilities and resources.
- Includes neighborhood park amenities such as multi-purpose turf field, walking track, hardcourts, play equipment, and/or off-street parking.
- Joint use facilities are utilized by the public when school is not in session and are reserved for student use during school hours.



Boone Elementary



City's Joint Use Program with Schools

**Total of 107 joint use facilities, 96 with San Diego Unified
Over 440 acres of recreational opportunities**

- San Diego Unified School District
- Del Mar Union School District
- Poway Unified School District
- San Diego Community College District
- San Dieguito Union HS District
- San Ysidro School District
- Solana Beach School District
- South Bay Union School District



Play All Day Program with San Diego Unified

Expansion of the Joint Use Program

- Since 2016, **31** new or remodeled joint use facilities with SDUSD have opened to the public providing over **128** acres of new or remodeled park space.
- **7** future joint use facilities are in construction, **4** joint use facilities in design, **2** starting the public input process, and **10** identified in planning.
- SDUSD has utilized portions of a series of voter-approved capital improvement bond measures to construct new joint use facilities at school sites throughout the District.



Boone Elementary



Recently opened joint use facilities with SDUSD

In 2025, three new or remodeled JU facilities opened to the public.

Whitman Elementary Joint Use Facility
4.75 acres, multi-purpose natural turf field, walking track, parking lot, and shade trees.
Clairemont Community, CD 2

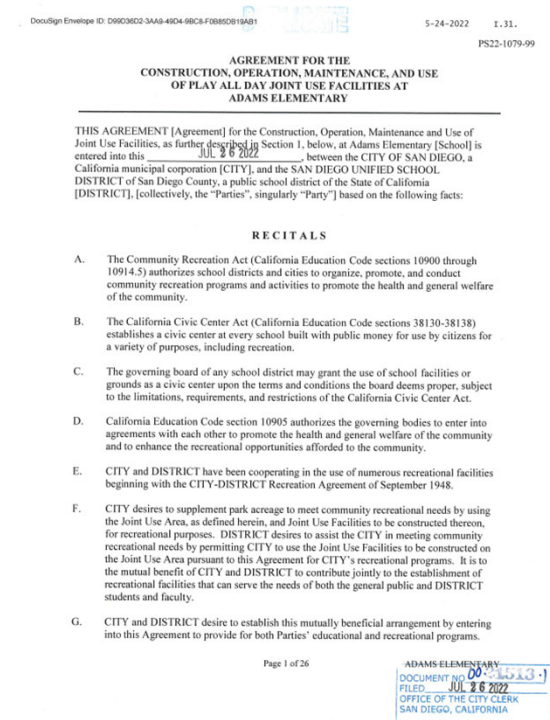
Boone Elementary School Joint Use Facility
3.56 acres, multi-purpose natural turf field, walking track, hardcourts, play equipment, parking lot, and shade trees.
Skyline-Paradise Hills Community, CD 4

Wilson Middle School Joint Use Facility
Remodeled facility, 3.16 acres, multi-purpose synthetic turf field and walking track, mezzanine hardcourts, linear park, and shade trees.
City Heights Community, CD 9



Joint Use Agreements

- A joint use agreement is a site-specific formal agreement between the City and School District for the shared use, maintenance and operations.
- Per the 2019 City Audit Report, all joint use agreements with SDUSD must be updated to the new approved joint use agreement template
- 71 joint use agreements with SDUSD have been updating using the new template
- 31 remaining agreements still need to be updated





Joint Use Program Financial Contributions

Parks and Recreation Department Fiscal Contributions for Joint Use

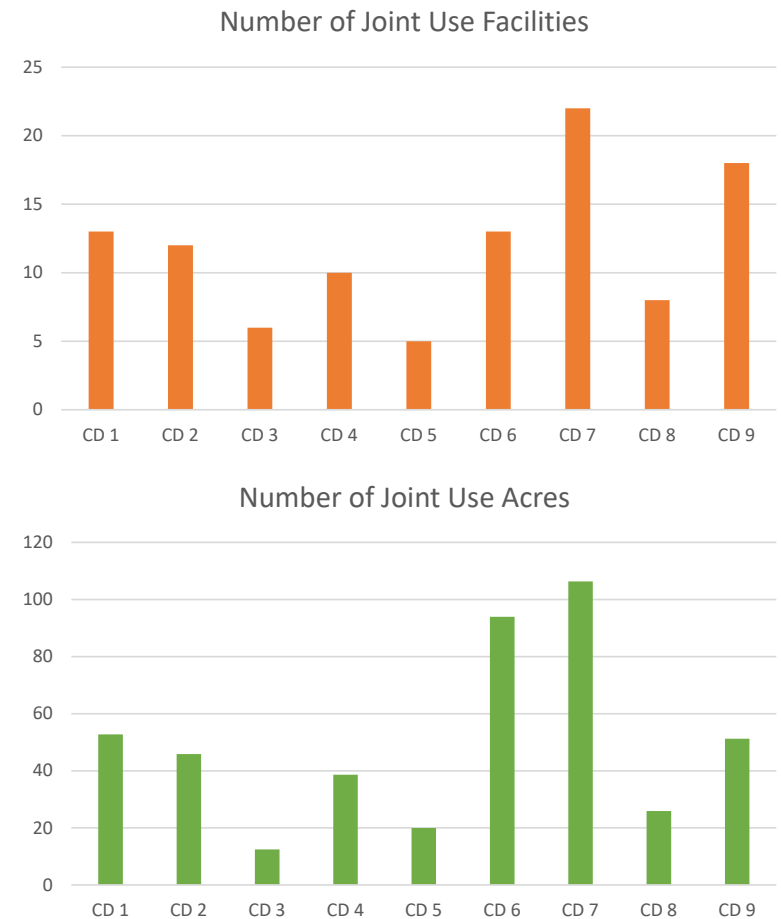
Description	Fiscal Year 2026	Fiscal Year 2027 Estimate
Number of Joint Use Sites added	3	3
Full-Time Equivalent (FTE) Position Adds	1.5	3.0
Ongoing Expense Added	\$319,495	\$356,291

- Ongoing expenses include personnel expenses, supplies, contracts, and utilities.
- The Fiscal Year 2027 estimate is based on the draft budget estimates. The budget is subject to change during the upcoming annual budget development process.



Joint Use Opportunities

- The City is committed to increasing joint use opportunities in all council districts.
- For the next several years, the City has limited O&M funds available to take on new joint use facilities.



Joint Use Program Issues

- This year the Department worked with school districts on issues regarding:
 - Reduced access to joint use fields and public notification process
 - Public input process challenges for new joint use fields



Wilson Middle



Joint Use Program Goals

- Continue to support and explore opportunities to gradually expand the City's Joint Use Program with School Districts

