

City Council Policy 800-14 Prioritizing CIP Projects – Application to P&R Projects



Engineering and Capital Projects Department

Regional Park Improvement Fund Oversight Committee
February 19, 2026

CP 800-14 Purpose:

To establish a capital planning prioritization process to optimize the use of available resources and guide an objective methodology used to produce equal and equitable outcomes.



Scoring CIP Projects

- ✓ Each CIP Project is scored using 7 factors described in the policy
- ✓ Projects are rescored if additional funding is needed
- ✓ Prioritization score informs decisions by City Council / Mayor



Prioritization Factors

Legal Compliance
and
Risk to Health and
Safety

Asset Condition
and
Level of Service

Equal and Equitable
Community
Investment

Sustainability
and
Conservation

Funding Availability

Project Readiness

Bundling
Opportunities

Factor Point Distribution for Various Asset Categories

Factors	Parks & Rec and Golf Assets	Library Assets	Mobility Assets	Public Safety & General Service Assets	Enterprise & Fee-Funded Assets	Flood Resiliency & Water Quality Assets
1. Legal Compliance and Risk to Health, Safety and Environment	18	13	25	25	25	25
2. Asset Condition and Level of Service	25	25	25	28	25	25
3. Equal and Equitable Community Investment	20	20	20	20	20	20
4. Sustainability and Conservation	25	25	15	15	15	15
5. Funding Availability	5	10	5	5	5	5
6. Project Readiness	5	5	5	5	5	5
7. Multi Asset Benefit	2	2	5	2	5	5
Total	100	100	100	100	100	100

Priority Factor 1:
**Legal Compliance and
Risk to Health and Safety**



Priority Factor 1: Legal Compliance and Risk to Health and Safety

18	Factor 1 - Legal Compliance and Risk to Health and Safety	
8	Safety Issues - Is there an existing safety issue related to the proposed park improvement(s)?	
x	100%	Yes - A significant safety issue exists, the park or facility is closed, caution tape/other warning signage has been installed, and/or facility cannot be used safely
	50%	Some safety issues - Existing improvements may fail due to age or do not meet current safety requirements
	0%	No - There are no known safety issues
4	Health Impact - Is there a health impact related to the proposed park improvement(s)?	
x	100%	Yes - There is a significant health impact (For example, the entire park facility has been removed or is currently closed for public use)
	50%	Some health impact (For example, opportunities for exercise/recreational use have been reduced due to removal of a portion of the facility or some of the original equipment and/or there are some limitations for accessibility based on current standards)
	0%	No - There is no health impact (For example, the project will not improve the exercise/recreational use)
6	Legal Requirement - Is this project required by legal mandate (in part or in whole)?	
x	100%	Yes - legally mandated (Project specific; For example, the City is in a lawsuit related to this specific park or facility)
	75%	Yes - legally mandated (Programmatic; For example, the City must comply with the Americans with Disabilities Act (ADA), Climate Action Plan (CAP), Multiple Species Conservation Program (MSCP), Vernal Pool Habitat Conservation Plan (VPHCP), Zero Emissions Municipal Buildings and Operations Policy (ZEMBOP), etc., and the project would address deficiencies related to these laws and mandates)
	25%	Potential legal requirement - a claim has been submitted against the City that could become a future lawsuit
	0%	No

Priority Factor 2

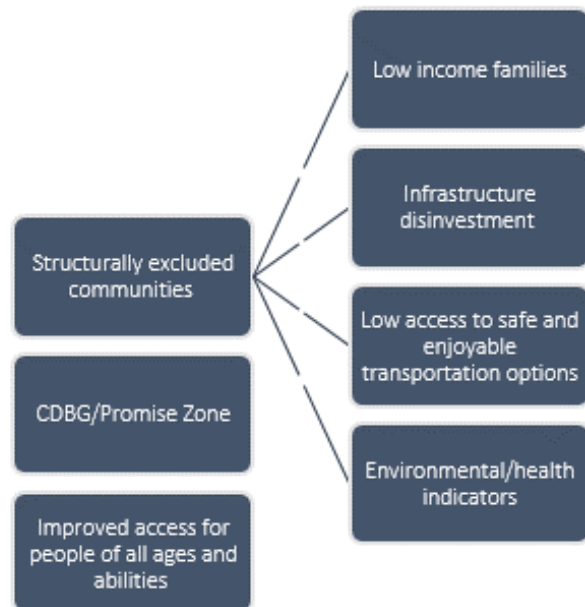
Asset Condition & Level of Service



Priority Factor 2: Asset Condition and Level of Service

25	Factor 2 - Asset Condition and Level of Service		
12	Answer if Existing Facility - Quality of Service - Does the project improve existing conditions and capacity to meet the minimum level and quality of services that is deficient per the Park Condition Index rating?		
x	100%	Yes - Poor rating per Parks and/or Facility Condition Assessments	
	50%	Yes - Fair rating per Parks and/or Facility Condition Assessments	
	0%	No - Good rating per Parks and/or Facility Condition Assessments	
3	Answer if Existing Facility - Useful Life - Does the project improve overall reliability of the asset and infrastructure system? Does the project extend its useful life?		
x	100%	Yes - Full replacement	
	50%	Yes - 50%	
	0%	No	
3	Answer if Existing Facility - Operations and Maintenance (O&M) - Does project reduce City O&M expenditures?		
x	100%	Yes - Significantly reduces expenditures; over 50% savings	
	50%	Yes - Somewhat; under 50% savings	
	0%	No	
7	Answer for both Existing and New Facilities - Does the project serve areas that have higher population densities and experience the most growth?		
x	100%	Yes - Area with high population density	
	75%	Yes - Area experiencing significant population growth	
	0%	No	
18	Answer if New Facility - Level of Service - Does the project address the need to install new facilities per the recommendations of the Parks Master Plan and/or Climate Action Plan?		
	100%	Yes - High ranking per Parks Master Plan and/or Climate Action Plan	
	50%	Yes - Medium ranking per Parks Master Plan and/or Climate Action Plan	
	0%	No - Not included in Parks Master Plan and/or Climate Action Plan	

Priority Factor 3: Equal & Equitable Community Investment



Priority Factor 3: Equal and Equitable Community Investment

20	Factor 3 - Equal and Equitable Community Investment	
20		Community - Does the project contribute to economic development and revitalization efforts and is located in a Structurally Excluded Community?
x	100%	Yes, the project (facility) is within defined boundaries of a Structurally Excluded Community such as a Census Tract Eligible for a Community Development Block Grant (CDBG), a community within a Promise Zone, a Community of Concern identified in the Climate Equity Index, and/or other similar designation
	75%	No, the project is not directly in the defined boundaries, but the project serves a Structurally Excluded Community such as a Census Tract Eligible for a Community Development Block Grant (CDBG), a community within a Promise Zone, a Community of Concern identified in the Climate Equity Index, and/or other similar designation
	50%	No, but project advances access for people of all ages and abilities
	0%	No

Priority Factor 4: Sustainability & Conservation

Climate Equity Index

Advance Climate Action

Promotes Climate Resiliency

Improves Community Health & Environment

Electrification/Decarbonization

Priority Factor 4: Sustainability and Conservation

25	Factor 4 - Sustainability and Conservation		
4	Greenhouse Gas (GHG) Reduction - Does the project improve the health of the community and natural environment by using sustainable designs that improve the regional air quality, reduce greenhouse gas (GHG) emissions, and do not contribute to climate change?		
x	100%	Yes	
	50%	Partially	
	0%	No	
4	Climate Resiliency - Does the project promote climate resiliency by reducing the heat island effect, increasing natural habitat, increasing trees and green spaces, improving water quality, and increasing independence for local energy and water resources?		
x	100%	Yes	
	50%	Partially	
	0%	No	
4	Water Conservation - Does the project promote improving water quality and creating independence for local water resources?		
x	100%	Yes	
	50%	Partially	
	0%	No	
4	Energy Independence - Does the project promote increasing independence for local energy resources?		
x	100%	Yes	
	50%	Partially	
	0%	No	
4	Decarbonization - Does the project result in electrification/decarbonization of facility and/or fleet (i.e. electric vehicle [EV] fleet charging infrastructure) adherent to Zero Emissions Municipal Buildings and Operations Policy (ZEMBOP)?		
x	100%	Yes	
	50%	Partially	
	0%	No	
5	Climate Equity - Does the project benefit those located in Communities of Concern that show inequities or disparities per the Climate Equity Index (see https://www.sandiego.gov/sustainability/)?		
x	100%	Yes, project is located in a defined community with Very Low Access to Opportunity	
	75%	Yes, project is located in a defined community with Low Access to Opportunity	
	50%	Yes, project is located in a defined community with Moderate Access to Opportunity	
	0%	No	

Priority Factor 5:
Funding Availability



Priority Factor 6:
Project Readiness

Priority Factor 7:
Bundling Opportunities



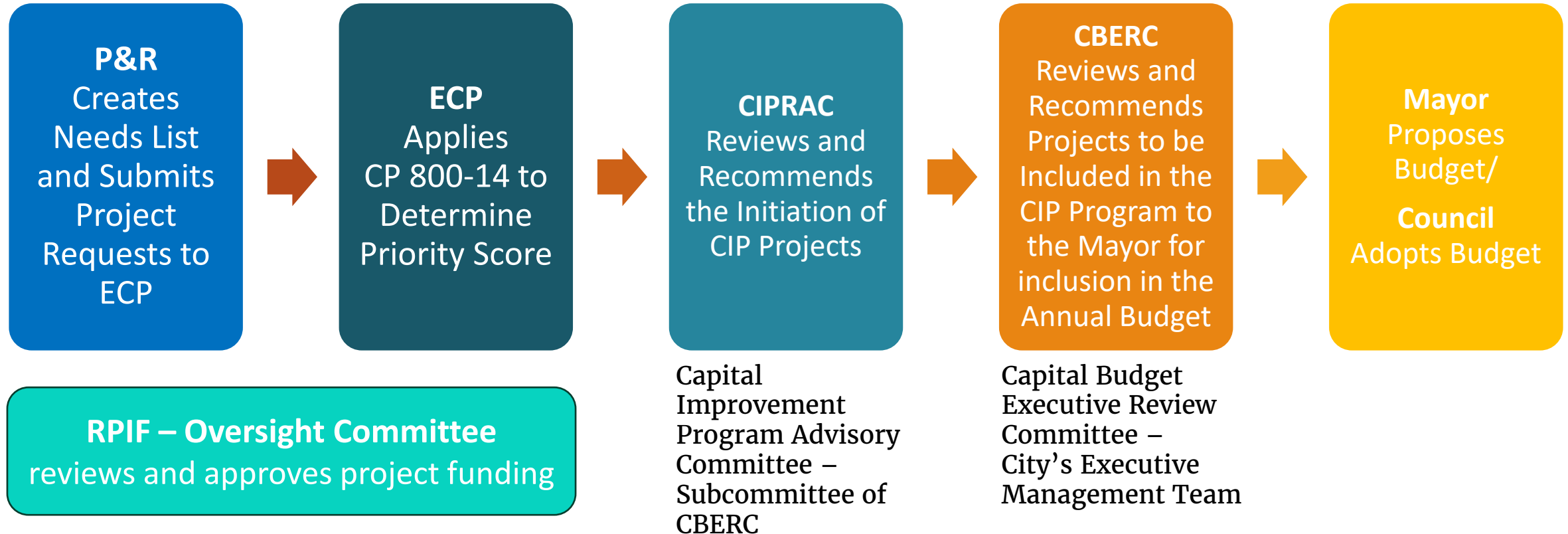
Priority Factor 5: Funding Availability

Priority Factor 6: Project Readiness

Priority Factor 7: Bundling Opportunities

5	Factor 5 - Funding Availability		
5	Outside Funding Opportunity - Does this project have a non-City funding opportunity?		
x	100%	Yes - this project has outside grant funding or donor support, or it can reasonably anticipate outside support	
	0%	No - this project is likely to be funded exclusively with City funds	
5	Factor 6 - Project Readiness		
3	Current Project Phase - Is the project close to construction?		
x	100%	Construction	
	50%	Design	
	25%	Pre-Design/Preliminary Engineering	
	0%	Pre-Design Not Started	
2	Timeline to complete project (Level of Complexity) - How complex is this project to design and implement?		
x	100%	Minimum Design/expedited implementation	
	50%	Standard Design Schedule	
	0%	Complex	
2	Factor 7 - Bundling Opportunities		
2	Bundling - Will this project provide facilities listed in other project categories?		
x	100%	Yes, It will provide facilities listed in other project categories	
	50%	Yes, multiple facility improvements	
	0%	No	

Project Approval Process



An objective of CIPRAC and CBERC is the proper implementation of CP 800-14.

Example

Officer Jeremy Henwood Park Play Area Replacement

Project scope

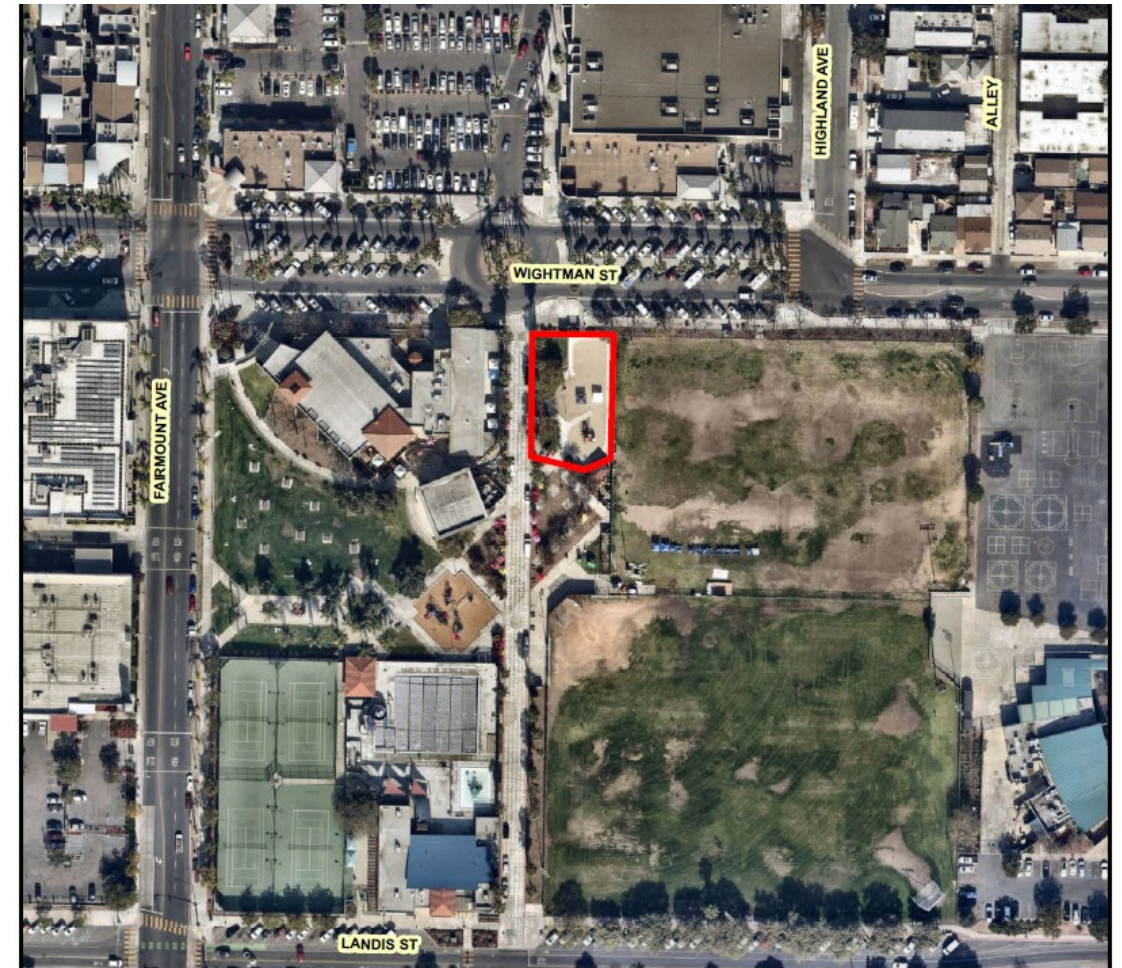
Park improvements include the replacement of a children's play area, site furnishings, landscape renovation, lighting, and ADA improvements.

Project Location


Mid-City: City Heights Community

Priority Score

70



Legend

 Ofc. Jeremy Henwood Park Play Area Repl



Officer Jeremy Henwood Park Play Area Replacement

18 Factor 1 - Legal Compliance and Risk to Health and Safety		
8	Safety Issues - Is there an existing safety issue related to the proposed park improvement(s)?	
1	100%	Yes - A significant safety issue exists, the park or facility is closed, caution tape/other warning signage has been installed, and/or facility cannot be used safely
	50%	Some safety issues - Existing improvements may fail due to age or do not meet current safety requirements
	0%	No - There are no known safety issues
4	Health Impact - Is there a health impact related to the proposed park improvement(s)?	
1	100%	Yes - There is a significant health impact (For example, the entire park facility has been removed or is currently closed for public use)
	50%	Some health impact (For example, opportunities for exercise/recreational use have been reduced due to removal of a portion of the facility or some of the original equipment and/or there are some limitations for accessibility based on current standards)
	0%	No - There is no health impact (For example, the project will not improve the exercise/recreational use)
6	Legal Requirement - Is this project required by legal mandate (in part or in whole)?	
	100%	Yes - legally mandated (Project specific; For example, the City is in a lawsuit related to this specific park or facility)
	75%	Yes - legally mandated (Programmatic; For example, the City must comply with the Americans with Disabilities Act (ADA), Climate Action Plan (CAP), Multiple Species Conservation Program (MSCP), Vernal Pool Habitat Conservation Plan (VPHCP), Zero Emissions Municipal Buildings and Operations Policy (ZEMBOP), etc., and the project would address deficiencies related to these laws and mandates)
1	25%	Potential legal requirement - a claim has been submitted against the City that could become a future lawsuit
	0%	No

Safety issue:
Play equipment has been removed or restricted

Health Impact:
Project will replace equipment

Legal Mandate:
All improvements will be ADA compliant

25 Factor 2 - Asset Condition and Level of Service		
12	Answer if Existing Facility - Quality of Service - Does the project improve existing conditions and capacity to meet the minimum level and quality of services that is deficient per the Park Condition Index rating?	
1	100%	Yes - Poor rating per Parks and/or Facility Condition Assessments
	50%	Yes - Fair rating per Parks and/or Facility Condition Assessments
	0%	No - Good rating per Parks and/or Facility Condition Assessments
3	Answer if Existing Facility - Useful Life - Does the project improve overall reliability of the asset and infrastructure system? Does the project extend its useful life?	
1	100%	Yes - Full replacement
	50%	Yes - 50%
	0%	No
3	Answer if Existing Facility - Operations and Maintenance (O&M) - Does project reduce City O&M expenditures?	
1	100%	Yes - Significantly reduces expenditures; over 50% savings
	50%	Yes - Somewhat; under 50% savings
	0%	No
7	Answer for both Existing and New Facilities - Does the project serve areas that have higher population densities and experience the most growth?	
1	100%	Yes - Area with high population density (Pop density: 12376)
	75%	Yes - Area experiencing significant population growth
	0%	No
18	Answer if New Facility - Level of Service - Does the project address the need to install new facilities per the recommendations of the Parks Master Plan and/or Climate Action Plan?	
	100%	Yes - High ranking per Parks Master Plan and/or Climate Action Plan
	50%	Yes - Medium ranking per Parks Master Plan and/or Climate Action Plan
	0%	No - Not included in Parks Master Plan and/or Climate Action Plan

Current Condition:
Poor

Extend Useful Life:
Yes

Reduce O&M:
Replacement of restricted equipment

Population Density:
High

Officer Jeremy Henwood Park Play Area Replacement

20 Factor 3 - Equal and Equitable Community Investment		
20		Community - Does the project contribute to economic development and revitalization efforts and is located in a Structurally Excluded Community?
1	100%	Yes, the project (facility) is within defined boundaries of a Structurally Excluded Community such as a Census Tract Eligible for a Community Development Block Grant (CDBG), a community within a Promise Zone, a Community of Concern identified in the Climate Equity Index , and/or other similar designation
	75%	No, the project is not directly in the defined boundaries, but the project serves a Structurally Excluded Community such as a Census Tract Eligible for a Community Development Block Grant (CDBG), a community within a Promise Zone, a Community of Concern identified in the Climate Equity Index, and/or other similar designation
	50%	No, but project advances access for people of all ages and abilities
	0%	No

Structurally Excluded
Community:
Community of Concern

25 Factor 4 - Sustainability and Conservation		
4		Greenhouse Gas (GHG) Reduction - Does the project improve the health of the community and natural environment by using sustainable designs that improve the regional air quality, reduce greenhouse gas (GHG) emissions, and do not contribute to climate change?
	100%	Yes
	50%	Partially
1	0%	No
4		Climate Resiliency - Does the project promote climate resiliency by reducing the heat island effect, increasing natural habitat, increasing trees and green spaces, improving water quality, and increasing independence for local energy and water resources?
	100%	Yes
1	50%	Partially
	0%	No
4		Water Conservation - Does the project promote improving water quality and creating independence for local water resources?
	100%	Yes
	50%	Partially
1	0%	No
4		Energy Independence - Does the project promote increasing independence for local energy resources?
	100%	Yes
	50%	Partially
1	0%	No
4		Decarbonization - Does the project result in electrification/decarbonization of facility and/or fleet (i.e. electric vehicle [EV] fleet charging infrastructure) adherent to Zero Emissions Municipal Buildings and Operations Policy (ZEMBOP)?
	100%	Yes
	50%	Partially
1	0%	No
5		Climate Equity - Does the project benefit those located in Communities of Concern that show inequities or disparities per the Climate Equity Index (see https://www.sandiego.gov/sustainability/)?
	100%	Yes, project is located in a defined community with Very Low Access to Opportunity
	75%	Yes, project is located in a defined community with Low Access to Opportunity
1	50%	Yes, project is located in a defined community with Moderate Access to Opportunity
	0%	No

No

Climate Resiliency:
Partial - Landscape/Green
Spaces

No

No

No

No

Officer Jeremy Henwood Park Play Area Replacement

5	Factor 5 - Funding Availability	
5	Outside Funding Opportunity - Does this project have a non-City funding opportunity?	
	100%	Yes - this project has outside grant funding or donor support, or it can reasonably anticipate outside support
1	0%	No - this project is likely to be funded exclusively with City funds

Fund Source:
City Funded

5	Factor 6 - Project Readiness	
3	Current Project Phase - Is the project close to construction?	
	100%	Construction
1	50%	Design
	25%	Pre-Design/Preliminary Engineering
	0%	Pre-Design Not Started
2	Timeline to complete project (Level of Complexity) - How complex is this project to design and implement?	
1	100%	Minimum Design/expedited implementation
	50%	Standard Design Schedule
	0%	Complex

Schematic Design Complete

Timeline:
Use Schematic Design for
Design-Build Contract

2	Factor 7 - Bundling Opportunities	
2	Bundling - Will this project provide facilities listed in other project categories?	
	100%	Yes, It will provide facilities listed in other project categories
	50%	Yes, multiple facility improvements
1	0%	No

No Bundling

Questions