



# Harmony Park





Image Credit: Downtown Community Plan





**Park Amenity & Program Study:**

- Highly Active Park
- Perimeter Running Track
- Dog Park
- Playground
- Pickleball
- Climbing Wall
- Plentiful Shade Trees
- Creative Seating
- Symphony Theme





## LEGEND

- 1 Music Themed Children's Play Area Enclosed with 4'-0" Tall Steel Mesh Fencing
- 2 Two Pickleball Courts with 6'-0" Fence
- 3 Synthetic Turf Dog Run with 5'-0" Fence
- 4 42" Tall Feature Wall with Perforated Steel Panel Veneer
- 5 Signature Civic Music Sign
- 6 Shade Structure, Typ.
- 7 Running/Walking Path on Rubberized Surfacing
- 8 Street Trees, Typ.
- 9 Dog Run Entry Gate
- 10 Music Play Elements, Typ.
- 11 Dog Agility Equipment, Typ.
- 12 Future Kiosk/ Restroom Location
- 13 Pickleball Paddle Rack
- 14 Wood Slat Piano Key Bench at Pickleball Courts
- 15 Trash and Recycling, Typ.
- 16 Bench, Typ.
- 17 18" Tall Raised Steel Planter, Typ.
- 18 18" Tall Concrete Seats
- 19 Urban Rocker Swings Anchored to Shade Structure Above
- 20 Integral Color Concrete Paving with Grace Top Cast Finish
- 21 Existing Street Trees to Remain, Typ.
- 22 Understory Planting in Tree Wells Along Eighth Avenue
- 23 Decomposed Granite in Tree Wells Along C Street & Ninth Avenue
- 24 Concrete Pavers with Varying Tones, Typ. Each Line Represents a White Paver Separating Contrasting Paver Tones.
- 25 Modular Wetland Unit, Typ.



MATERIAL BOARD



Steel Mesh Fencing at Children's Play & Dog Park  
Color: Black



Chain Link Fence at Pickleball Court  
Color: Black



Concrete Wall/ Mow Curb



Perforated Panel at Feature Wall  
Color: Dark Ash. Pattern: Onion



18" HT. Plant Railing at ROW Planting Areas



Pavers at Pedestrian Walkways  
Color: Ackerstone Ivory, Mesa Beige & Arizona Tan



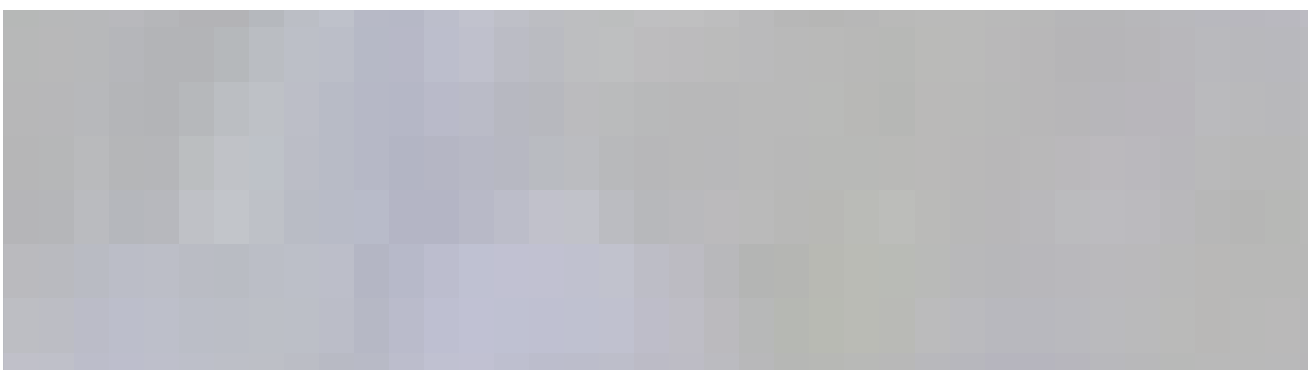
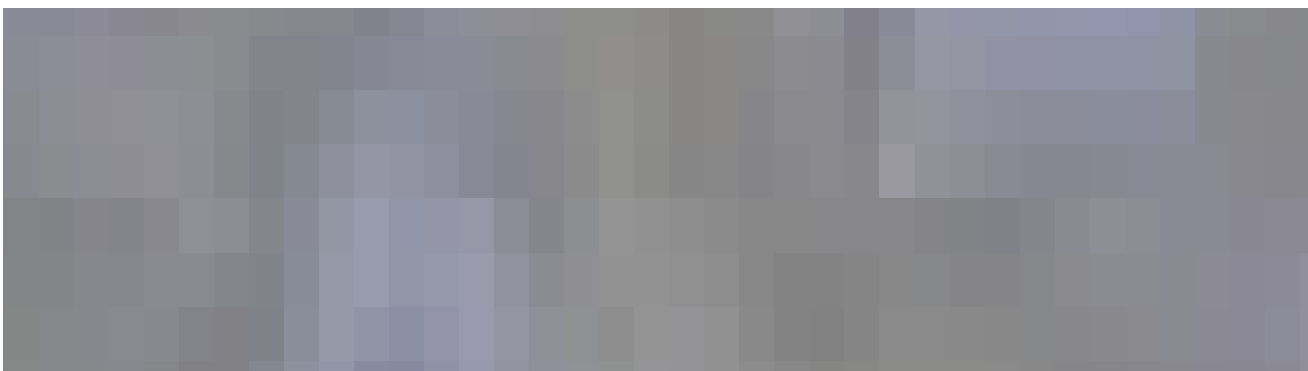
Concrete at Enhanced Pedestrian Walkways  
Color: Davis Colors San Diego Buff



Concrete at Pickleball Courts  
Color: Davis Colors Willow Green & Euroblue (Cobalt)



Resilient Surfacing at Running Track  
Color: Turquoise & Standard Green



Resilient Surfacing at Play Area  
Color: Orange & Standard Beige Ombre



White Play Structures with Black Netting



Trash & Recycling Receptacle



Game Table



Bench



Community Swings



TREES SUCH AS:



Coast Live Oak | *Quercus agrifolia*



California Sycamore | *Platanus Racemosa*



Lacebark Elm | *Ulmus parviflora*



Pink Trumpet Tree | *Tabebuia impetiginosa*



Bay Laurel | *Laurus nobilis*



Carrotwood | *Cupaniopsis anacardioides*



Honey Mesquite | *Prosopis glandulosa 'Thornless'*



Fern Pine | *Podocarpus gracilior*



Firecracker Island Snapdragon  
*Galvezia speciosa 'Firecracker'*



Foxtail Agave | *Agave attenuata*



Indian Hawthorne | *Raphiolepis umbellata 'White'*



Natal Plum | *Carissa macrocarpa*



Pine Muhly | *Muhlenbergia dubia*

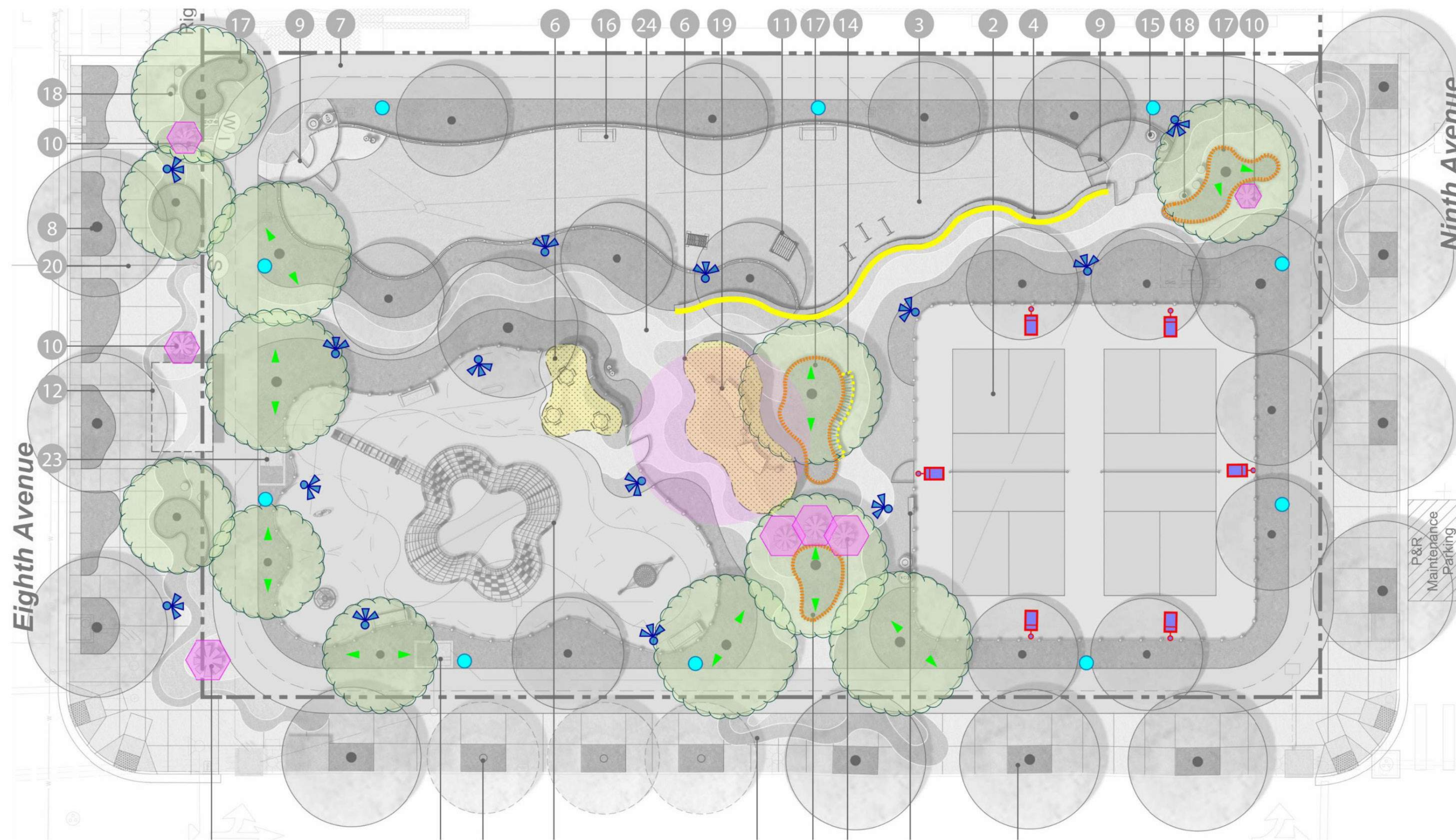


Flax Lily | *Dianella tasmanica 'Variegata'*



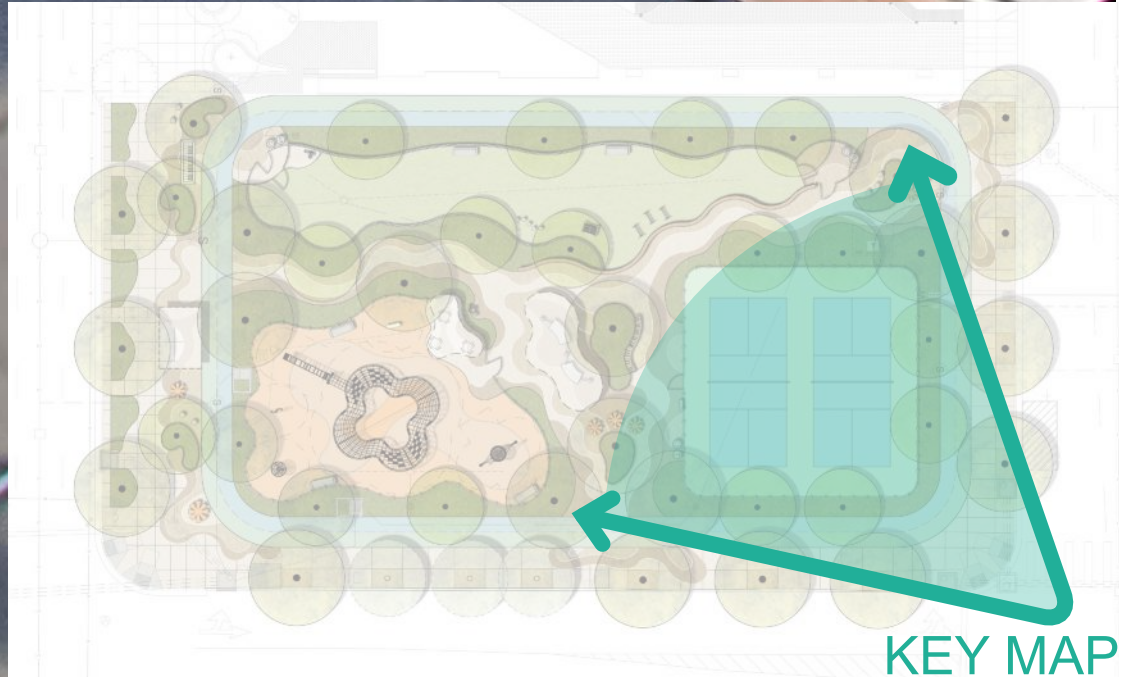
Anticipated Pet Relief Area Built into Planting Design





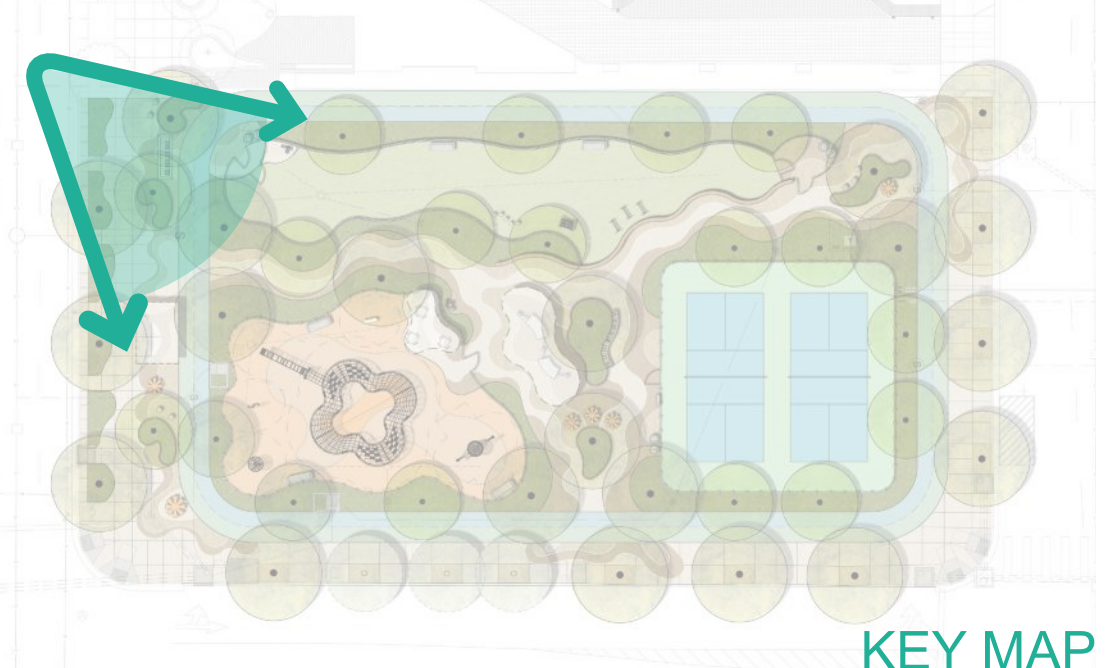
## SITE LIGHTING DIAGRAMMATIC LAYOUT





BIRDS EYE VIEW RENDERING





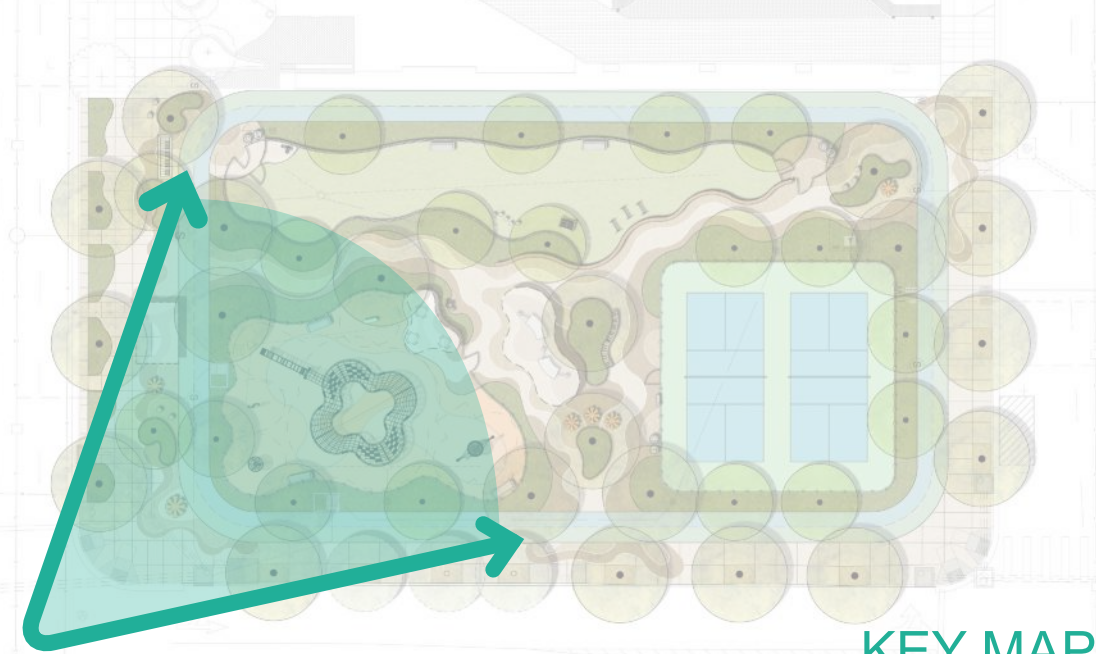
STREETSCAPE RENDERING





CENTRAL PLAZA RENDERING





KEY MAP

BIRDS EYE VIEW RENDERING





**THE CITY OF SAN DIEGO**

**M E M O R A N D U M**

**DATE:** November 21, 2025

**TO:** Elena Pascual, Senior Planner, City Planning Department

**FROM:** Andy Field, Director, Parks and Recreation Department

**SUBJECT:** Approval of Harmony Park General Development Plan and Naming

---

The Parks and Recreation Board reviewed and recommended approval by a vote of 8-0-0 the General Development Plan for and the naming of Harmony Park on November 20, 2025. As the Mayor appointed designee, I considered the recommendation of the Parks and Recreation Board and hereby approve the General Development Plan for and the naming of Harmony Park.

Sincerely,

Andy Field  
Director, Parks and Recreation Department

Cc: Elyse Lowe, Director, Development Services  
Tom Tomlinson, Assistant Director, Parks and Recreation Department  
Brian Schoenfisch, Deputy Director, Development Services, Urban Innovation Division  
Michelle Abella-Shon, Assistant Deputy Director, Parks and Recreation Department  
Rebecca Malone, Program Manager, City Planning Department