



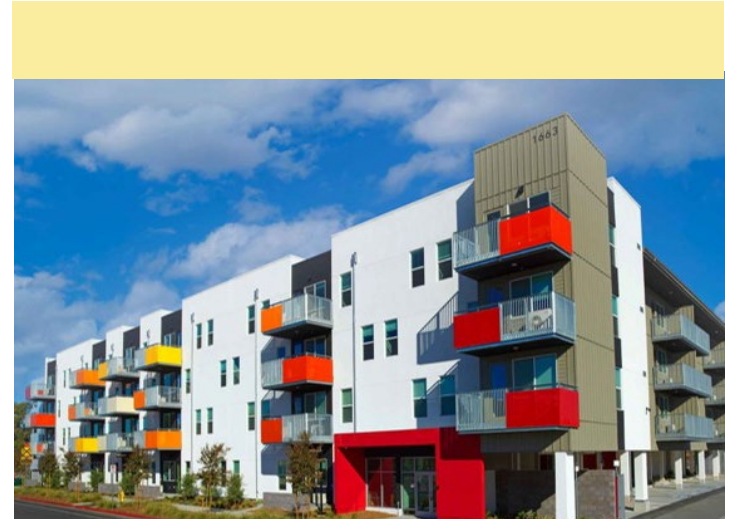
**AFFORDABLE
HOUSING PERMIT**



NOW

Executive Order Overview

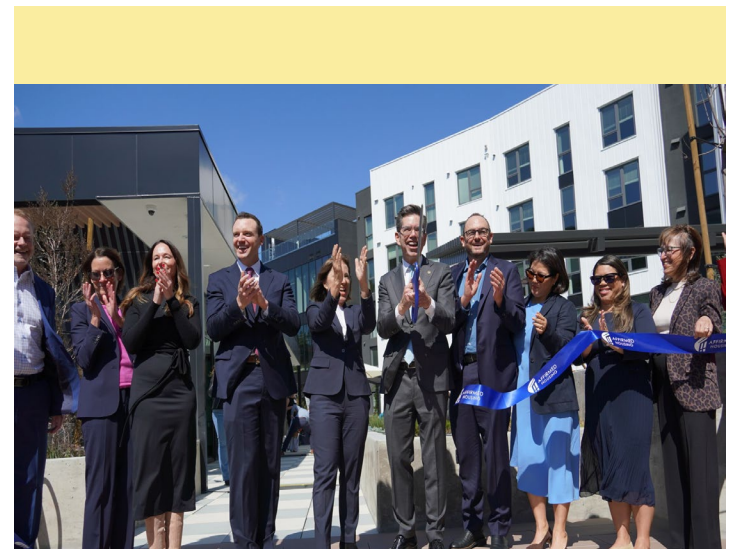
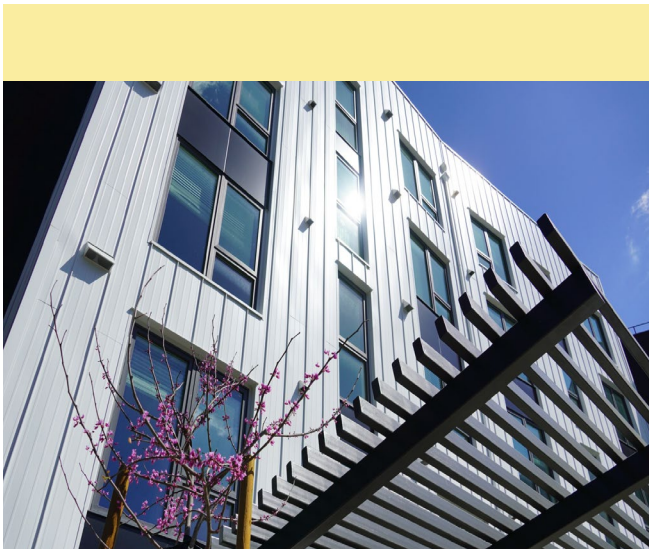
- Applies to projects that provide **affordable housing or emergency shelters.**
- Eligible projects **do not require any further discretionary approvals.**
- Developments must be **entirely residential.**
- **All units must be deed-restricted as affordable to very-low, low-, or moderate-income households.**
- Required to keep **affordable rents for 55 years.**



The Iris – 100 Affordable Homes – San Ysidro

Shout-out to DSD for such a great performance, getting us through the permit process. – Glo Architecture

The executive order permit process cut approval times by more than half, with even complex projects approved on or ahead of schedule. – Wakeland Housing



Skyline (Transit Village) – 100 Affordable Homes – Rancho Bernardo

Executive Order Provides Special Permit Processing for 100% Affordable Housing and Shelter Projects



AFFORDABLE HOUSING PERMIT
NOW

Total Projects
61

Total Homes
6,746

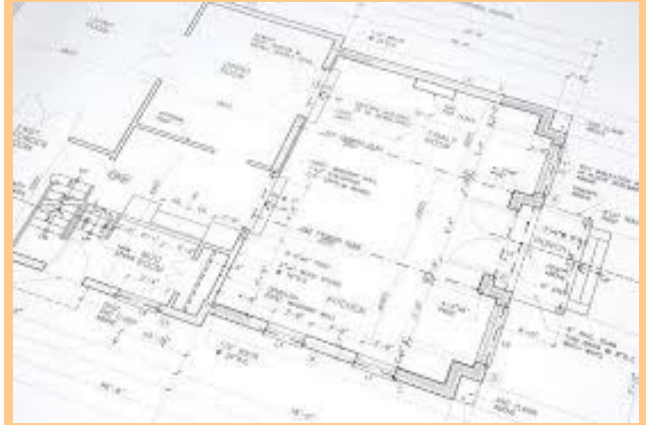
Average Review Cycle
9 Days

MARCH 2026 3-YEAR PROGRESS REPORT

PROGRAM STATUS



IN PROCESS



PROJECTS: 18
HOMES: 2,393



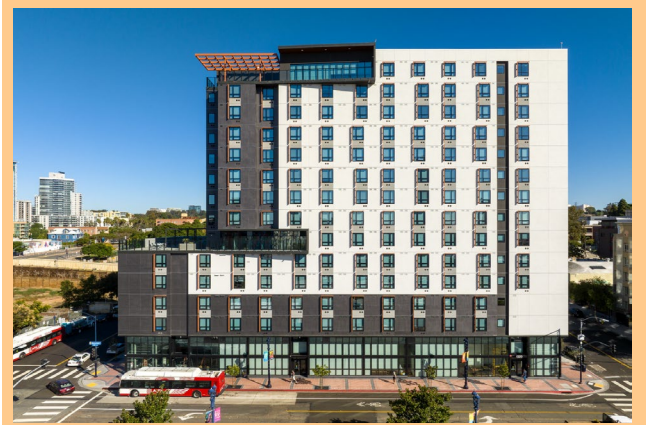
UNDER CONSTRUCTION



PROJECTS: 22
HOMES: 2,205



PROJECTS COMPLETED



PROJECTS: 21
HOMES: 2,148

100% Review Cycles Beating Target




30 Business Day Target



9 Business Day Actual Turnaround

387 EMERGENCY SHELTER BEDS



These shelters provide beds, meals, safe accommodations, and a pathway to permanent housing for men, women, youth, and children in the system.

COMPLETED AFFORDABLE HOMES



 To access the complete list of projects scan here 